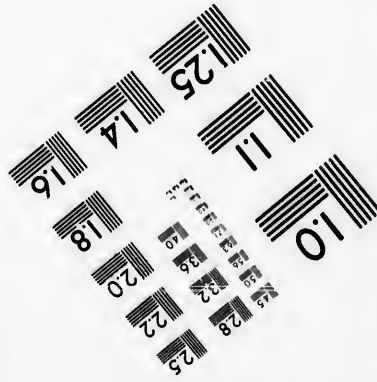
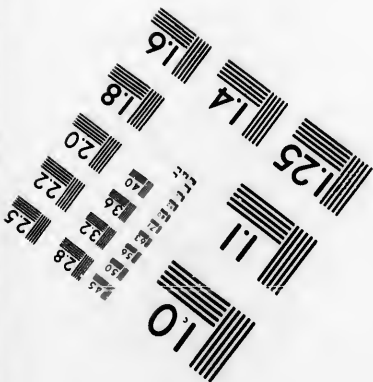
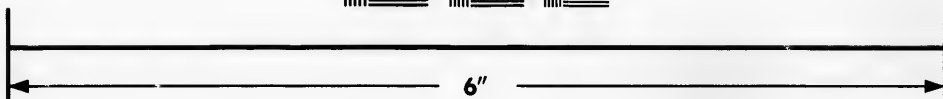
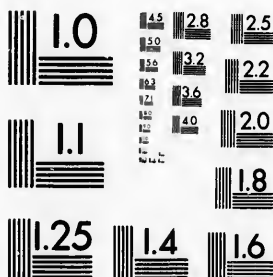


**IMAGE EVALUATION
TEST TARGET (MT-3)**



**Photographic
Sciences
Corporation**

23 WEST MAIN STREET
WEBSTER, N.Y. 14580
(716) 872-4503

**CIHM
Microfiche
Series
(Monographs)**

**ICMH
Collection de
microfiches
(monographies)**



Canadian Institute for Historical Microreproductions / Institut canadien de microreproductions historiques

© 1992

Technical and Bibliographic Notes / Notes techniques et bibliographiques

The Institute has attempted to obtain the best original copy available for filming. Features of this copy which may be bibliographically unique, which may alter any of the images in the reproduction, or which may significantly change the usual method of filming, are checked below.

L'Institut a microfilmé le meilleur exemplaire qu'il lui a été possible de se procurer. Les détails de cet exemplaire qui sont peut-être uniques du point de vue bibliographique, qui peuvent modifier une image reproduite, ou qui peuvent exiger une modification dans la méthode normale de filmage sont indiqués ci-dessous.

Coloured covers/
Couverture de couleur

Coloured pages/
Pages de couleur

Covers damaged/
Couverture endommagée

Pages damaged/
Pages endommagées

Covers restored and/or laminated/
Couverture restaurée et/ou pelliculée

Pages restored and/or laminated/
Pages restaurées et/ou pelliculées

Cover title missing/
Le titre de couverture manque

Pages discoloured, stained or foxed/
Pages décolorées, tachetées ou piquées

Coloured maps/
Cartes géographiques en couleur

Pages detached/
Pages détachées

Coloured ink (i.e. other than blue or black)/
Encre de couleur (i.e. autre que bleue ou noire)

Showthrough/
Transparence

Coloured plates and/or illustrations/
Planches et/ou illustrations en couleur

Quality of print varies/
Qualité inégale de l'impression

Bound with other material/
Relié avec d'autres documents

Continuous pagination/
Pagination continue

Tight binding may cause shadows or distortion along interior margin/
La reliure serrée peut causer de l'ombre ou de la distorsion le long de la marge intérieure

Includes index(es)/
Comprend un (des) index

Title on header taken from:/
Le titre de l'en-tête provient:

Blank leaves added during restoration may appear within the text. Whenever possible, these have been omitted from filming/
Il se peut que certaines pages blanches ajoutées lors d'une restauration apparaissent dans le texte, mais, lorsque cela était possible, ces pages n'ont pas été filmées.

Title page of issue/
Page de titre de la livraison

Caption of issue/
Titre de départ de la livraison

Masthead/
Générique (périodiques) de la livraison

Additional comments:
Commentaires supplémentaires:

There are some creases in the middle of the pages. Copy has manuscript annotations.

This item is filmed at the reduction ratio checked below/
Ce document est filmé au taux de réduction indiqué ci-dessous.

10X	14X	18X	22X	26X	30X
<input type="checkbox"/>	<input type="checkbox"/>	<input type="checkbox"/>	<input type="checkbox"/>	<input checked="" type="checkbox"/>	<input type="checkbox"/>
12X	16X	20X	24X	28X	32X

The copy filmed here has been reproduced thanks to the generosity of:

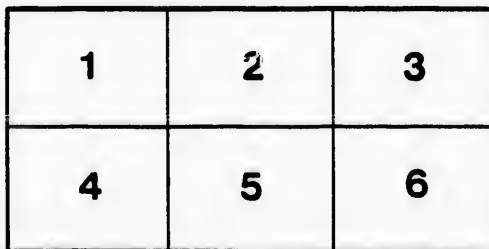
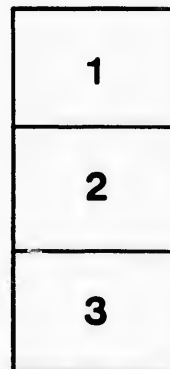
Manuscript Division,
National Archives of Canada

The images appearing here are the best quality possible considering the condition and legibility of the original copy and in keeping with the filming contract specifications.

Original copies in printed paper covers are filmed beginning with the front cover and ending on the last page with a printed or illustrated impression, or the back cover when appropriate. All other original copies are filmed beginning on the first page with a printed or illustrated impression, and ending on the last page with a printed or illustrated impression.

The last recorded frame on each microfiche shall contain the symbol \rightarrow (meaning "CONTINUED"), or the symbol ∇ (meaning "END"), whichever applies.

Maps, plates, charts, etc., may be filmed at different reduction ratios. Those too large to be entirely included in one exposure are filmed beginning in the upper left hand corner, left to right and top to bottom, as many frames as required. The following diagrams illustrate the method:



L'exemplaire filmé fut reproduit grâce à la générosité de:

Division des manuscrits,
Archives nationales du Canada

Les images suivantes ont été reproduites avec le plus grand soin, compte tenu de la condition et de la netteté de l'exemplaire filmé, et en conformité avec les conditions du contrat de filmage.

Les exemplaires originaux dont la couverture en papier est imprimée sont filmés en commençant par le premier plat et en terminant soit par la dernière page qui comporte une empreinte d'impression ou d'illustration, soit par le second plat, selon le cas. Tous les autres exemplaires originaux sont filmés en commençant par la première page qui comporte une empreinte d'impression ou d'illustration et en terminant par la dernière page qui comporte une telle empreinte.

Un des symboles suivants apparaîtra sur la dernière image de chaque microfiche, selon le cas: le symbole \rightarrow signifie "A SUIVRE", le symbole ∇ signifie "FIN".

Les cartes, planches, tableaux, etc., peuvent être filmés à des taux de réduction différents. Lorsque le document est trop grand pour être reproduit en un seul cliché, il est filmé à partir de l'angle supérieur gauche, de gauche à droite, et de haut en bas, en prenant le nombre d'images nécessaire. Les diagrammes suivants illustrent la méthode.

u'il
cet
de vue
e
tion
és

ript



32x

Government House, 26 July 1850

Sir,

I have the honor, by the direction of the Lieutenant Governor, to forward to you the enclosed extract of an Address from the House of Assembly, and to request that you will have the goodness to transmit to this Office, as soon as possible, the statement required. *Yours Obedient*

I have the honor to be,

Sir,

Your Most Obedient,

Humble Servant,

H. M. D. G.

John Small Esq

Clerk of the Executive Council

Done over

copy


Edward Everett Green
 York St, January 1831

21

I have been to the engraver, & the printer,
 the printer and engraver, and communicated to me in your letter of
 the 16th instant. I have the honor to transmit to you herewith,
 a statement showing the names of the persons, who were called
 upon in the office, for the year ending 31st Decemb^r, 1829, and
 also a similar statement for the year ended 31st Decemb^r, 1830.
 Both of which, I trust, will be of use to the Hon^{ble} Secy^r of the office.

I have the honor to be

Yours

Very respectfully

Humble servant

(Signed) John W. Hall
 J. W. H.

J. A. Lloyd Esq^r

Chief Secretary



TO HIS EXCELLENCY SIR JOHN COLBORNE, &c. &c. &c.

May it please Your Excellency,

We, His Majesty's dutiful and loyal Subjects, the Commons of Upper Canada, in Provincial Parliament assembled, respectfully request, that Your Excellency may be pleased to cause to be laid before this House, at an early period of its present Session, a full and particular account of all the *Fees*, Salaries, Pensions, Payments and Rewards for extra Services, and all other income and emoluments derived or to be derived from their several Offices and Services, by all Officers, Clerks and Servants, who have been employed in the Civil Service of the Government of this Province for the Years 1829 and 1830, during these Years: whether derived from the *Ordinary Revenue*; the Hereditary, Casual or Territorial Revenue of the King, so called; the Votes of the Parliament of the United Kingdom; the Authority of Provincial Enactments or of the Lords Commissioners of the Treasury; or under any other authority or from any other source whatsoever; shewing the authority under which such salaries, fees or other emoluments were granted or paid, or are to be paid, and the nature and description of all fees charged by such public Officers; distinguishing the income of each Officer in each Year; and also the different Offices held by such individuals as hold more than one office, and shewing the several sources of income and profit derived from each office;—said return to contain a detailed Statement of the Salaries, Fees, Perquisites and all other Emoluments of the Collectors of Customs at the several Ports, during the said period, exhibiting the number of Permits granted on Entries and Clearances, and the Fees charged and received by the Officers on each Permit, and the Fees charged on each Schooner, Steam Boat, Barge or other Boat, and the number of Permits required on each Cargo of Goods; also an account of the proportion of Seizures, Fines and Forfeitures paid to each of these Collectors, and the names and number of their Deputies, where they employ any such; and giving a Schedule of the Fees and Charges made by the Clerk of the Crown and the Deputy Clerks of the Crown with the Sum derived by these Officers from each item of the said Schedule; together with an account of Pensions paid within the said years, to whomsoever paid or from whatsoever fund; in order that this House may be the better enabled to ascertain whether any, and if so, what deductions or other alterations are necessary to be made or practicable in respect to the income of such Officers or Pensioners, &c. in the enforcement of that system of Economy and Retrenchment recommended by His Majesty as essential to good Government and public prosperity.

(Signed,)

ARCHIBALD McLEAN,

SPEAKER.

*Commons House of Assembly,
21st January, 1831.*

