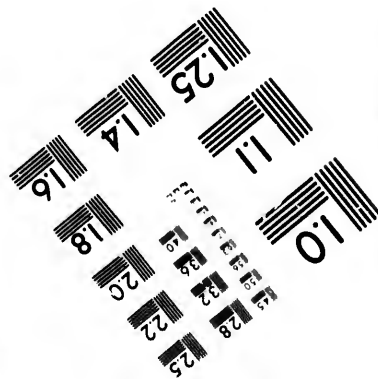
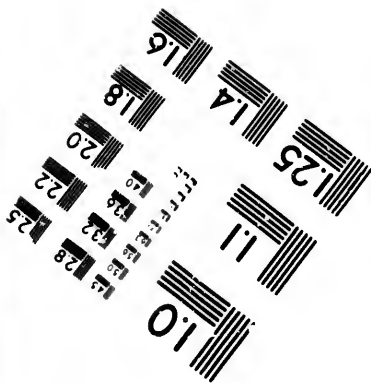
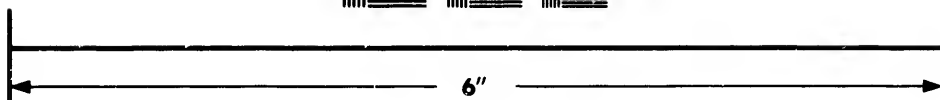
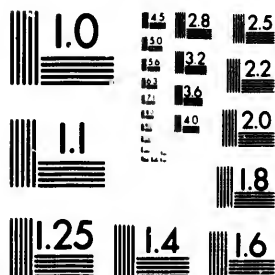


**IMAGE EVALUATION  
TEST TARGET (MT-3)**



**Photographic  
Sciences  
Corporation**

23 WEST MAIN STREET  
WEBSTER N.Y. 4580  
(716) 872-4503

1.5  
1.6  
1.8  
2.0  
2.2  
2.5  
2.8  
3.2  
3.6  
4.0

**CIHM/ICMH  
Microfiche  
Series.**

**CIHM/ICMH  
Collection de  
microfiches.**



Canadian Institute for Historical Microreproductions / Institut canadien de microreproductions historiques

1.5  
1.6  
1.8  
2.0  
2.2  
2.5  
2.8  
3.2  
3.6  
4.0

**© 1985**

Technical and Bibliographic Notes/Notes techniques et bibliographiques

The Institute has attempted to obtain the best original copy available for filming. Features of this copy which may be bibliographically unique, which may alter any of the images in the reproduction, or which may significantly change the usual method of filming, are checked below.

L'Institut a microfilmé le meilleur exemplaire qu'il lui a été possible de se procurer. Les détails de cet exemplaire qui sont peut-être uniques du point de vue bibliographique, qui peuvent modifier une image reproduite, ou qui peuvent exiger une modification dans la méthode normale de filmage sont indiqués ci-dessous.

- Coloured covers/  
Couverture de couleur
- Covers damaged/  
Couverture endommagée
- Covers restored and/or laminated/  
Couverture restaurée et/ou pelliculée
- Cover title missing/  
Le titre de couverture manque
- Coloured maps/  
Cartes géographiques en couleur
- Coloured ink (i.e. other than blue or black)/  
Encre de couleur (i.e. autre que bleue ou noire)
- Coloured plates and/or illustrations/  
Planches et/ou illustrations en couleur
- Bound with other material/  
Relié avec d'autres documents
- Tight binding may cause shadows or distortion along interior margin/  
La reliure serrée peut causer de l'ombre ou de la distortion le long de la marge intérieure
- Blank leaves added during restoration may appear within the text. Whenever possible, these have been omitted from filming/  
Il se peut que certaines pages blanches ajoutées lors d'une restauration apparaissent dans le texte, mais, lorsque cela était possible, ces pages n'ont pas été filmées.
- Additional comments:/  
Commentaires supplémentaires:

- Coloured pages/  
Pages de couleur
- Pages damaged/  
Pages endommagées
- Pages restored and/or laminated/  
Pages restaurées et/ou pelliculées
- Pages discoloured, stained or foxed/  
Pages décolorées, tachetées ou piquées
- Pages detached/  
Pages détachées
- Showthrough/  
Transparence
- Quality of print varies/  
Qualité inégale de l'impression
- Includes supplementary material/  
Comprend du matériel supplémentaire
- Only edition available/  
Seule édition disponible
- Pages wholly or partially obscured by errata slips, tissues, etc., have been refilmed to ensure the best possible image/  
Les pages totalement ou partiellement obscurcies par un feuillet d'errata, une pelure, etc., ont été filmées à nouveau de façon à obtenir la meilleure image possible.

This item is filmed at the reduction ratio checked below/  
Ce document est filmé au taux de réduction indiqué ci-dessous.

10X	14X	18X	22X	26X	30X
<input type="checkbox"/>	<input type="checkbox"/>	<input type="checkbox"/>	<input type="checkbox"/>	<input checked="" type="checkbox"/>	<input type="checkbox"/>
12X	16X	20X	24X	28X	32X

The copy filmed here has been reproduced thanks to the generosity of:

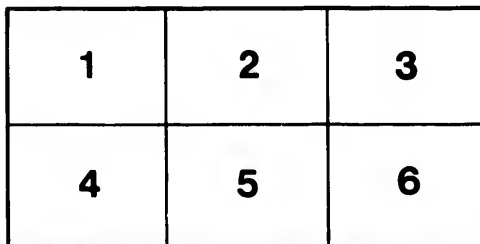
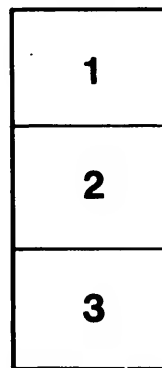
Library of the Public  
Archives of Canada

The images appearing here are the best quality possible considering the condition and legibility of the original copy and in keeping with the filming contract specifications.

Original copies in printed paper covers are filmed beginning with the front cover and ending on the last page with a printed or illustrated impression, or the back cover when appropriate. All other original copies are filmed beginning on the first page with a printed or illustrated impression, and ending on the last page with a printed or illustrated impression.

The last recorded frame on each microfiche shall contain the symbol  $\rightarrow$  (meaning "CONTINUED"), or the symbol  $\nabla$  (meaning "END"), whichever applies.

Maps, plates, charts, etc., may be filmed at different reduction ratios. Those too large to be entirely included in one exposure are filmed beginning in the upper left hand corner, left to right and top to bottom, as many frames as required. The following diagrams illustrate the method:



L'exemplaire filmé fut reproduit grâce à la générosité de:

La bibliothèque des Archives  
publiques du Canada

Les images suivantes ont été reproduites avec le plus grand soin, compte tenu de la condition et de la netteté de l'exemplaire filmé, et en conformité avec les conditions du contrat de filmage.

Les exemplaires originaux dont la couverture en papier est imprimée sont filmés en commençant par le premier plat et en terminant soit par la dernière page qui comporte une empreinte d'impression ou d'illustration, soit par le second plat, selon le cas. Tous les autres exemplaires originaux sont filmés en commençant par la première page qui comporte une empreinte d'impression ou d'illustration et en terminant par la dernière page qui comporte une telle empreinte.

Un des symboles suivants apparaît sur la dernière image de chaque microfiche, selon le cas: le symbole  $\rightarrow$  signifie "A SUIVRE", le symbole  $\nabla$  signifie "FIN".

Les cartes, planches, tableaux, etc., peuvent être filmés à des taux de réduction différents. Lorsque le document est trop grand pour être reproduit en un seul cliché, il est filmé à partir de l'angle supérieur gauche, de gauche à droite, et de haut en bas, en prenant le nombre d'images nécessaire. Les diagrammes suivants illustrent la méthode.

ails  
du  
diffier  
une  
nage

rata

elure,  
à

2X

Accon  
Jov

Accompanying Circular.  
Forming sheet.  
15<sup>th</sup> October 1843.

From G-118.

## REGULATIONS

RELATIVE TO

### APPOINTMENTS TO PUBLIC OFFICES IN THE COLONIES.

1.—Throughout the British Colonies the Offices holden in the service of the Executive Government are all so holden at the pleasure of The Queen, except in the case of a very few Offices formerly granted during the lives and good behaviour of the holders, which grants cannot hereafter be revived in the same form on the occurrence of future vacancies, *and in W. Canada when the Judges hold their Offices for life.*

2.—Of Offices holden at the pleasure of the Crown, some are filled up by the Governor in his own name, or by the Governor and Council, in pursuance of special Enactments authorizing, in these particular cases, such a deviation from the established form. In the absence of such Enactments public Offices of inconsiderable rank and emolument are usually filled up by the Governor either in his own name, or in the name of Her Majesty. All Offices of considerable rank, trust, and emolument are filled up by appointments either provisional or final,—provisional, when they are made by the Governor on any sudden emergency, subject to Her Majesty's approbation,—final, when they are made in obedience to Her Majesty's Commands.

3.—The general rule is, that all public Offices of considerable rank, trust, and emolument, should be granted by an Instrument under the public Seal of the Colony in Her Majesty's name. In the case of provisional appointments such instruments are issued by the Governor in pursuance of Her Majesty's general Instructions. In the case of final appointments they are issued in pursuance of Her Majesty's special Instructions, which special Instructions are conveyed to the Governor generally in the form of Warrants under the Royal Signet and Sign Manual, but occasionally in the form of Despatches from the Secretary of State.

4.—The distinction between Offices which are, and Offices which are not, of considerable rank, trust, and emolument, being in itself vague and indefinite, has been rendered as precise as the nature of the case admits by the following distinction. Offices are classed under three heads;—1, those, of which the emoluments do not exceed one hundred pounds per annum—2, those, of which the emoluments exceed one hundred and do not exceed two hundred pounds per annum—3, and those, of which the emoluments exceed two hundred pounds per annum.

5. In the case of Offices of the first or lowest of the three classes last mentioned, the Governor as a general rule has the absolute disposal, subject only to the condition of reporting every such appointment by the first opportunity. In the case of Offices of the second, or middle class, appointments are seldom if ever made except on the Governor's recommendation. When such appointments are confirmed, the confirmation takes place in the form of a Despatch from the Secretary of State. In the case of Offices of the third or highest class, the Governor is to make a special report of the

grounds of his appointment, and is distinctly to apprise the object of his choice that he holds the Office in the strictest sense of the word provisionally only until his appointment is confirmed by Her Majesty. In such cases the confirmation takes place in the form already mentioned, of a Warrant under the Royal Signet and Sign Manual.

6.—It is of course impossible to lay down any general rule for deciding in what cases the recommendation of a Governor will, or will not be ultimately sanctioned and confirmed by The Queen; but in general it may be stated that Her Majesty will be advised to regard more favorably appointments which are in the nature of promotions of meritorious public Servants, than appointments made in favor of persons new to the public Service, and that when any new Office has been created, the Governor's recommendation for filling it up will carry with it less weight than in the case of Offices which the Governor may have found already established. In the cases of such new Offices there will always be more than usual reason to anticipate that an appointment made will be made directly from this Country.

7.—It is further to be understood that in determining the propriety of appointments from this Country or from the Colony, regard will probably be had to the comparatively advanced state of wealth and population in each Colony, and to the number of properly qualified candidates among whom the local authorities may have the opportunity, as vacancies occur of making a selection for Her Majesty's approval and confirmation through the Secretary of State.

8.—In the distribution of the patronage of the Government in the Colonies, great weight must always be attached to local services and experience. Every Governor will therefore make once in each year a confidential report of the claims of candidates, whether already employed in the public Service or not, whom he may consider to possess that qualification, in order that when a vacancy or an opportunity for promotion occurs, the Secretary of State may have before him the means of judging how far the particular candidate recommended by the Governor is on the whole the best qualified, and whether a candidate of proper qualifications is to be found in the Colony or in any adjacent Colony. Such reports being prepared, not in reference to any existing vacancy and an actual appointment, but on the more broad and deliberative view of the actual state of the Civil Service, and of the comparative claims and qualifications of different candidates, will obviate some inconveniencies which have arisen from the simultaneous appointment of an Officer and report on his fitness for public Office. It will also afford to the Secretary of State, who will have before him simultaneously the whole of these Reports, more effectual means than he at present possesses of judging of the merits generally of Officers employed in subordinate situations throughout Her Majesty's Colonial Possessions; and will materially increase the prospects of advancement and encouragement to meritorious Officers in such situations, by enlarging the range within which they may hope to obtain promotion as a reward for active and efficient service. In cases where the means of effectually recruiting the public Service as vacancies shall arise shall appear not to be within the Governor's reach, the Secretary of State will think it peculiarly incumbent on himself to select proper persons in this Country.

the  
int-  
the

what  
and  
l be  
ions  
the  
ior's  
e of  
such  
oint-

y of  
o the  
o the  
have  
roval

great  
r will  
lates,  
er to  
otion  
r the  
lified,  
n any  
isting  
ew of  
ations  
n the  
Office.  
cously  
dging  
t Her  
vance-  
g the  
ve and  
service  
h, the  
proper



