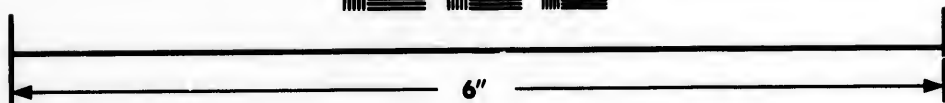
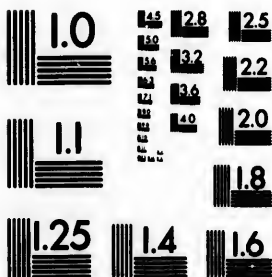


**IMAGE EVALUATION
TEST TARGET (MT-3)**



**Photographic
Sciences
Corporation**

23 WEST MAIN STREET
WEBSTER, N.Y. 14580
(716) 872-4503

128
125
122
120

**CIHM/ICMH
Microfiche
Series.**

**CIHM/ICMH
Collection de
microfiches.**



Canadian Institute for Historical Microreproductions / Institut canadien de microreproductions historiques

10

© 1987

The copy filmed here has been reproduced thanks to the generosity of:

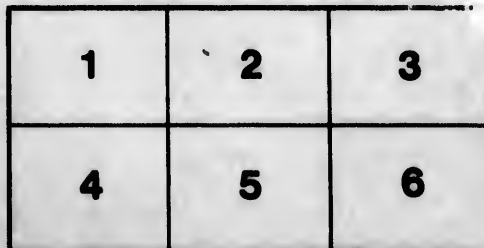
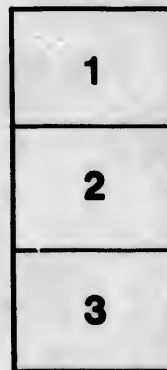
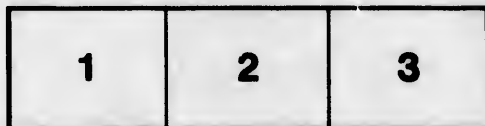
Metropolitan Toronto Library
Canadian History Department

The images appearing here are the best quality possible considering the condition and legibility of the original copy and in keeping with the filming contract specifications.

Original copies in printed paper covers are filmed beginning with the front cover and ending on the last page with a printed or illustrated impression, or the back cover when appropriate. All other original copies are filmed beginning on the first page with a printed or illustrated impression, and ending on the last page with a printed or illustrated impression.

The last recorded frame on each microfiche shall contain the symbol \rightarrow (meaning "CONTINUED"), or the symbol ∇ (meaning "END"), whichever applies.

Maps, plates, charts, etc., may be filmed at different reduction ratios. Those too large to be entirely included in one exposure are filmed beginning in the upper left hand corner, left to right and top to bottom, as many frames as required. The following diagrams illustrate the method:



L'exemplaire filmé fut reproduit grâce à la générosité de:

Metropolitan Toronto Library
Canadian History Department

Les images suivantes ont été reproduites avec le plus grand soin, compte tenu de la condition et de la netteté de l'exemplaire filmé, et en conformité avec les conditions du contrat de filmage.

Les exemplaires originaux dont la couverture en papier est imprimée sont filmés en commençant par le premier plat et en terminant soit par la dernière page qui comporte une empreinte d'impression ou d'illustration, soit par le second plat, selon le cas. Tous les autres exemplaires originaux sont filmés en commençant par la première page qui comporte une empreinte d'impression ou d'illustration et en terminant par la dernière page qui comporte une telle empreinte.

Un des symboles suivants apparaîtra sur la dernière image de chaque microfiche, selon le cas: le symbole \rightarrow signifie "A SUIVRE", le symbole ∇ signifie "FIN".

Les cartes, planches, tableaux, etc., peuvent être filmés à des taux de réduction différents. Lorsque le document est trop grand pour être reproduit en un seul cliché, il est filmé à partir de l'angle supérieur gauche, de gauche à droite, et de haut en bas, en prenant le nombre d'images nécessaire. Les diagrammes suivants illustrent la méthode.

Reception of the Prince of Wales.



CITY OF TORONTO.

Programme of Music

TO BE SUNG BY THE

Children of the Schools of Toronto

UNDER THE DIRECTION OF

JOHN CARTER, ESQ.,

ASSISTED BY

MESSRS. SUGDEN AND SEFTON.

TORONTO:

PUBLISHED FOR THE OCCASION BY S. SUGDEN.

1860.

National Anthem.



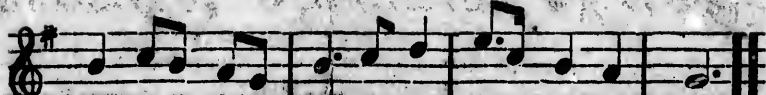
Verse 1. God save our gra - cious Queen, Long live our
 Verse 2. Thy choi - ceat gifts' in store, On her be



no - ble Queen! God save the Queen! Send her vic -
 pleased to pour, Long may she reign. May she de -



to - ri - ous, Hap - py and glo - ri - ous,
 fend our laws, And e - ver give us cause



Long to reign o - ver us, God save the Queen!
 To - sing with heart and voice, God save the Queen!

3rd verse, (written for the occasion by Rev. W. S. Darling.)



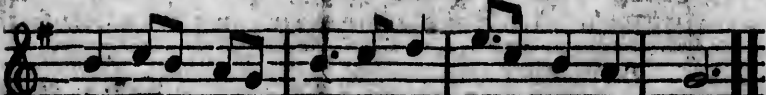
O Lord, her son de - fend, And when her



reign shall end, (God make it long), May he the



scop - tre sway as doth our Queen to - day,



Of right the stand-fast stay—The scourge of wrong.

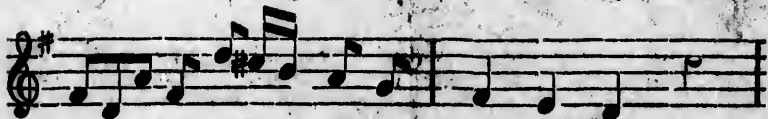
Rule Britannia.



V. 1. When Bri - tain first to Heav'n's com - mand, A -
2. The na - tions not so blest as thee, Must



rose from out the a - sure main, A -
in their turn to ty - rants fall, Must



rose a-rose from out the a - sure main.
in must in their turn to ty - rants fall.



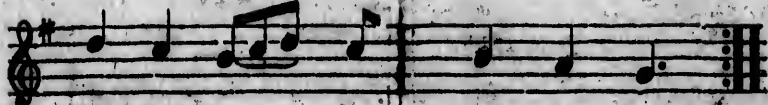
This was the char - ter the char - ter of the land, And
While thou shalt flourish, shalt flourish great and free, The



guar - dian an - gels sang the strain,
dread and en - vy of them all,



Rule Bri - tan - nia! Bri - tan - nia rules the waves, For



Brit - ons - ne - ver shall be slaves.

Repeat in Chorus.

1860. Prince music.

ALICE'S GARDEN

Handwritten musical notation for the first system, featuring a treble clef and a key signature of one flat. The notes are mostly quarter and eighth notes.

Handwritten musical notation for the second system, continuing the melody with similar note values and a treble clef.

Handwritten musical notation for the third system, showing a continuation of the piece with a treble clef.

Handwritten musical notation for the fourth system, with a treble clef and a key signature of one flat.

Handwritten musical notation for the fifth system, continuing the musical piece with a treble clef.

Handwritten musical notation for the sixth system, featuring a treble clef and a key signature of one flat.

Handwritten musical notation for the seventh system, concluding the piece with a treble clef and a key signature of one flat.

