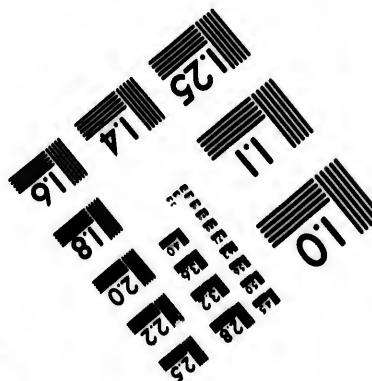
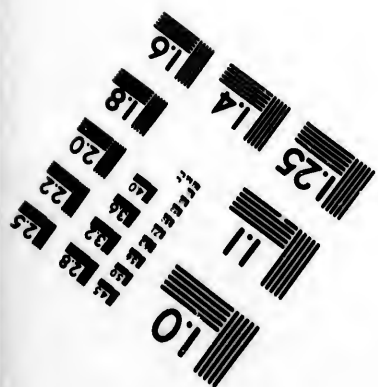
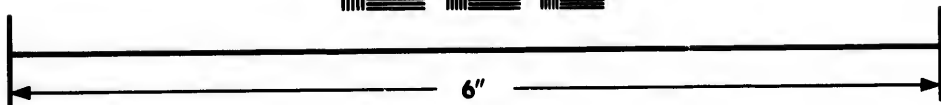
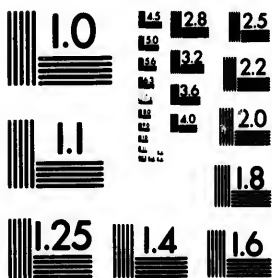


**IMAGE EVALUATION
TEST TARGET (MT-3)**



**Photographic
Sciences
Corporation**

23 WEST MAIN STREET
WEBSTER, N.Y. 14580
(716) 872-4503

1.8
2.0
2.2
2.5
2.8
3.2
3.6
4.0
4.5
5.0

**CIHM/ICMH
Microfiche
Series.**

**CIHM/ICMH
Collection de
microfiches.**



Canadian Institute for Historical Microreproductions / Institut canadien de microreproductions historiques

1.0
1.2
1.5
1.8
2.0
2.2
2.5
2.8
3.2
3.6
4.0
4.5
5.0

© 1987

Technical and Bibliographic Notes/Notes techniques et bibliographiques

The Institute has attempted to obtain the best original copy available for filming. Features of this copy which may be bibliographically unique, which may alter any of the images in the reproduction, or which may significantly change the usual method of filming, are checked below.

L'Institut a microfilmé le meilleur exemplaire qu'il lui a été possible de se procurer. Les détails de cet exemplaire qui sont peut-être uniques du point de vue bibliographique, qui peuvent modifier une image reproduite, ou qui peuvent exiger une modification dans la méthode normale de filmage sont indiqués ci-dessous.

- | | |
|--|--|
| <input type="checkbox"/> Coloured covers/
Couverture de couleur | <input type="checkbox"/> Coloured pages/
Pages de couleur |
| <input type="checkbox"/> Covers damaged/
Couverture endommagée | <input type="checkbox"/> Pages damaged/
Pages endommagées |
| <input type="checkbox"/> Covers restored and/or laminated/
Couverture restaurée et/ou pelliculée | <input type="checkbox"/> Pages restored and/or laminated/
Pages restaurées et/ou pelliculées |
| <input type="checkbox"/> Cover title missing/
Le titre de couverture manque | <input checked="" type="checkbox"/> Pages discoloured, stained or foxed/
Pages décolorées, tachetées ou piquées |
| <input type="checkbox"/> Coloured maps/
Cartes géographiques en couleur | <input type="checkbox"/> Pages detached/
Pages détachées |
| <input type="checkbox"/> Coloured ink (i.e. other than blue or black)/
Encre de couleur (i.e. autre que bleue ou noire) | <input checked="" type="checkbox"/> Showthrough/
Transparence |
| <input type="checkbox"/> Coloured plates and/or illustrations/
Planches et/ou illustrations en couleur | <input type="checkbox"/> Quality of print varies/
Qualité inégale de l'impression |
| <input type="checkbox"/> Bound with other material/
Relié avec d'autres documents | <input type="checkbox"/> Includes supplementary material/
Comprend du matériel supplémentaire |
| <input type="checkbox"/> Tight binding may cause shadows or distortion
along interior margin/
La reliure serrée peut causer de l'ombre ou de la
distorsion le long de la marge intérieure | <input type="checkbox"/> Only edition available/
Seule édition disponible |
| <input type="checkbox"/> Blank leaves added during restoration may
appear within the text. Whenever possible, these
have been omitted from filming/
Il se peut que certaines pages blanches ajoutées
lors d'une restauration apparaissent dans le texte,
mais, lorsque cela était possible, ces pages n'ont
pas été filmées. | <input type="checkbox"/> Pages wholly or partially obscured by errata
slips, tissues, etc., have been refilmed to
ensure the best possible image/
Les pages totalement ou partiellement
obscurcies par un feuillet d'errata, une pelure,
etc., ont été filmées à nouveau de façon à
obtenir la meilleure image possible. |
| <input checked="" type="checkbox"/> Additional comments:/
Commentaires supplémentaires:
[Printed ephemera] 1 sheet, [2] p. | |

This item is filmed at the reduction ratio checked below/
Ce document est filmé au taux de réduction indiqué ci-dessous.

10X	12X	14X	16X	18X	20X	22X	24X	26X	28X	30X	32X
									✓		

The copy filmed here has been reproduced thanks to the generosity of:

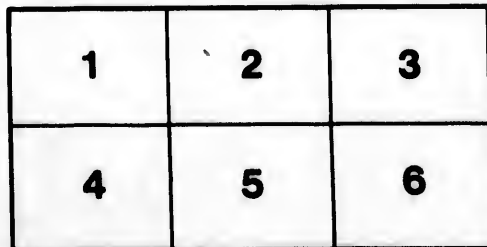
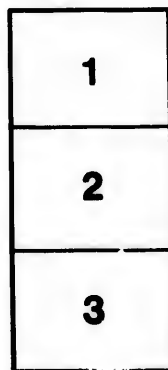
Metropolitan Toronto Library
Canadian History Department

The images appearing here are the best quality possible considering the condition and legibility of the original copy and in keeping with the filming contract specifications.

Original copies in printed paper covers are filmed beginning with the front cover and ending on the last page with a printed or illustrated impression, or the back cover when appropriate. All other original copies are filmed beginning on the first page with a printed or illustrated impression, and ending on the last page with a printed or illustrated impression.

The last recorded frame on each microfiche shall contain the symbol \rightarrow (meaning "CONTINUED"), or the symbol ∇ (meaning "END"), whichever applies.

Maps, plates, charts, etc., may be filmed at different reduction ratios. Those too large to be entirely included in one exposure are filmed beginning in the upper left hand corner, left to right and top to bottom, as many frames as required. The following diagrams illustrate the method:



L'exemplaire filmé fut reproduit grâce à la générosité de:

Metropolitan Toronto Library
Canadian History Department

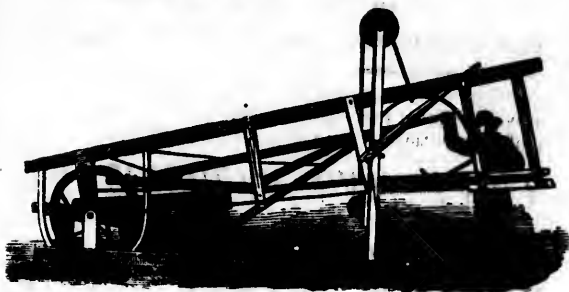
Les images suivantes ont été reproduites avec le plus grand soin, compte tenu de la condition et de la netteté de l'exemplaire filmé, et en conformité avec les conditions du contrat de filmage.

Les exemplaires originaux dont la couverture en papier est imprimée sont filmés en commençant par le premier plat et en terminant soit par la dernière page qui comporte une empreinte d'impression ou d'illustration, soit par le second plat, selon le cas. Tous les autres exemplaires originaux sont filmés en commençant par la première page qui comporte une empreinte d'impression ou d'illustration et en terminant par la dernière page qui comporte une telle empreinte.

Un des symboles suivants apparaîtra sur la dernière image de chaque microfiche, selon le cas: le symbole \rightarrow signifie "A SUIVRE", le symbole ∇ signifie "FIN".

Les cartes, planches, tableaux, etc., peuvent être filmés à des taux de réduction différents. Lorsque le document est trop grand pour être reproduit en un seul cliché, il est filmé à partir de l'angle supérieur gauche, de gauche à droite, et de haut en bas, en prenant le nombre d'images nécessaire. Les diagrammes suivants illustrent la méthode.

CHAMPION WORKS, HARRISTON, ONT.



OUR 8-HORSE CHAMPION *Is a Cross-cut Sawing Machine.*

The saw cuts both ways and runs in guides at both ends. It is a self-gigging machine and can be driven by any threshing machine horse-power. The power can be attached either to the end or side of the machine. We warrant it to cut 18 cords of maple stove wood in one hour. It was awarded First Prizes at Provincial Fairs in 1863, 1868, 1870 and 1872.

We also manufacture

THE YOUNG CHAMPION **WOOD SAWING MACHINE,**

And the Double-gear'd 4 or 6-horse Pitt's Power, which, we think, will supply a want long felt, for a good, durable horse power and saw rig for farmers' use. The power is the same principle as the 10-horse power in general use, only on a smaller scale. It has chairs for four arms and the horses travel over an iron rod same as the large powers.

The Saw Rig is so constructed that it can be driven by either small or large powers, and it has a combined Power and Hand-gigging Arrangement.

The Log Roller is on a square shaft and will hold any size of log, from 3 inches to 3 feet in diameter, without shifting.

The Log Way has a Roller on the back end, so that long logs can be sawed without moving the car back. By taking out two bolts, the saw and log way can be detached and a belt run from the wheel to drive straw cutter, grain crusher, circular saw, small threshing machine, or any machinery a farmer wants.

PRICE OF 8-HORSE CHAMPION, WITHOUT POWER, \$100
" YOUNG CHAMPION, WITH LOGWAY COMPLETE 50
" " " WITH SMALL PIT'S POWER 120

We also manufacture Harrows, Horse Rakes, Iron Cultivators, Garg Plows, Land Rollers, Circular Saw Tables, Hill's Patent Plows, Bob-sleighs, &c., &c.

Saw Gumming, and all kinds of Machinery Job Work done at reasonable rates.

Send for Price Lists.

MITCHELL & TEEPLE.

[TRIBUNE PRINT, HARRISTON.]

CHAMPION WORKS

We were awarded the

FIRST PRIZE AT CENTRAL FAIR IN GUELPH, On every article we had on Exhibition.

There were 16 entries in Wood Sawing Machines and we were awarded

1ST PRIZE FOR 6 OR 8 HORSE WOOD SAWING MACHINE
1ST PRIZE FOR 2 OR 4 HORSE WOOD SAWING MACHINE
~~1ST FOR IRON CULTIVATOR,~~
1ST FOR REVOLVING HORSE RAKE,

Which is enough to convince any man that the

CHAMPION WOOD SAWING MACHINES Are the best in Canada.

Be sure and see our **Young Champion** (2 or 4 horse) Wood Sawing Machine before ordering elsewhere.

We have also selected an Improved

HAND STRAW CUTTER
which we purpose having ready early in the winter.

Our CIRCULAR SAW TABLE

Can be driven by the 4-Horse Pit's Power, and is just the machine for sawing up poles and making pickets out of cedar posts for fencing, &c.

All kinds of Iron and Brass Castings made to order

Bring in your old cast iron. We will allow the highest price for it.

MITCHELL & TEEPLE.

Harriston, Sept. 24, 1873.

