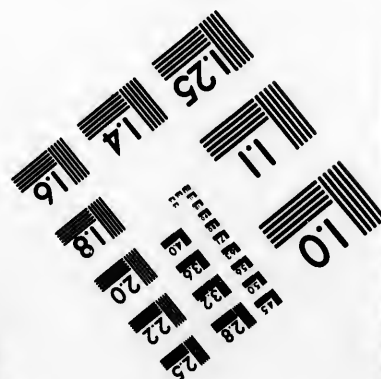
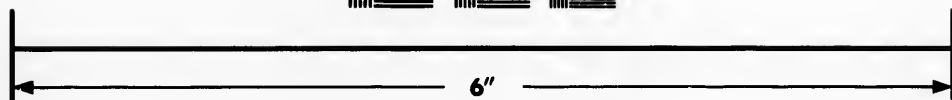
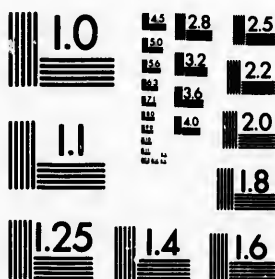


**IMAGE EVALUATION  
TEST TARGET (MT-3)**



**Photographic  
Sciences  
Corporation**

23 WEST MAIN STREET  
WEBSTER, N.Y. 14580  
(716) 872-4503

**CIHM/ICMH  
Microfiche  
Series.**

**CIHM/ICMH  
Collection de  
microfiches.**



**Canadian Institute for Historical Microreproductions / Institut canadien de microreproductions historiques**

**© 1983**

Technical and Bibliographic Notes/Notes techniques et bibliographiques

The Institute has attempted to obtain the best original copy available for filming. Features of this copy which may be bibliographically unique, which may alter any of the images in the reproduction, or which may significantly change the usual method of filming, are checked below.

L'Institut a microfilmé le meilleur exemplaire qu'il lui a été possible de se procurer. Les détails de cet exemplaire qui sont peut-être uniques du point de vue bibliographique, qui peuvent modifier une image reproduite, ou qui peuvent exiger une modification dans la méthode normale de filmage sont indiqués ci-dessous.

- Coloured covers/  
Couverture de couleur
- Covers damaged/  
Couverture endommagée
- Covers restored and/or laminated/  
Couverture restaurée et/ou pelliculée
- Cover title missing/  
Le titre de couverture manque
- Coloured maps/  
Cartes géographiques en couleur
- Coloured ink (i.e. other than blue or black)/  
Encre de couleur (i.e. autre que bleue ou noire)
- Coloured plates and/or illustrations/  
Planches et/ou illustrations en couleur
- Bound with other material/  
Relié avec d'autres documents
- Tight binding may cause shadows or distortion  
along interior margin/  
La reliure serrée peut causer de l'ombre ou de la  
distortion le long de la marge intérieure
- Blank leaves added during restoration may  
appear within the text. Whenever possible, these  
have been omitted from filming/  
Il se peut que certaines pages blanches ajoutées  
lors d'une restauration apparaissent dans le texte,  
mais, lorsque cela était possible, ces pages n'ont  
pas été filmées.

- Coloured pages/  
Pages de couleur
- Pages damaged/  
Pages endommagées
- Pages restored and/or laminated/  
Pages restaurées et/ou pelliculées
- Pages discoloured, stained or foxed/  
Pages décolorées, tachetées ou piquées
- Pages detached/  
Pages détachées
- Showthrough/  
Transparence
- Quality of print varies/  
Qualité inégale de l'impression
- Includes supplementary material/  
Comprend du matériel supplémentaire
- Only edition available/  
Seule édition disponible
- Pages wholly or partially obscured by errata  
slips, tissues, etc., have been refilmed to  
ensure the best possible image/  
Les pages totalement ou partiellement  
obscurcies par un feuillet d'errata, une pelure,  
etc., ont été filmées à nouveau de façon à  
obtenir la meilleure image possible.

- Additional comments:/  
Commentaires supplémentaires:

MSS NOTATIONS MAY MAKE PRINTING DIFFICULT TO READ

This item is filmed at the reduction ratio checked below/  
Ce document est filmé au taux de réduction indiqué ci-dessous.

10X	12X	14X	16X	18X	20X	22X	24X	26X	28X	30X	32X
					✓						

The copy filmed here has been reproduced thanks to the generosity of:

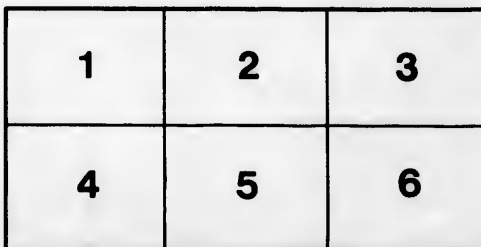
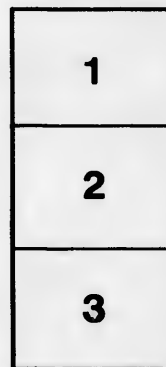
Metropolitan Toronto Library  
Canadian History Department

The images appearing here are the best quality possible considering the condition and legibility of the original copy and in keeping with the filming contract specifications.

Original copies in printed paper covers are filmed beginning with the front cover and ending on the last page with a printed or illustrated impression, or the back cover when appropriate. All other original copies are filmed beginning on the first page with a printed or illustrated impression, and ending on the last page with a printed or illustrated impression.

The last recorded frame on each microfiche shall contain the symbol → (meaning "CONTINUED"), or the symbol ∇ (meaning "END"), whichever applies.

Maps, plates, charts, etc., may be filmed at different reduction ratios. Those too large to be entirely included in one exposure are filmed beginning in the upper left hand corner, left to right and top to bottom, as many frames as required. The following diagrams illustrate the method:



L'exemplaire filmé fut reproduit grâce à la générosité de:

Metropolitan Toronto Library  
Canadian History Department

Les images suivantes ont été reproduites avec le plus grand soin, compte tenu de la condition et de la netteté de l'exemplaire filmé, et en conformité avec les conditions du contrat de filmage.

Les exemplaires originaux dont la couverture en papier est imprimée sont filmés en commençant par le premier plat et en terminant soit par la dernière page qui comporte une empreinte d'impression ou d'illustration, soit par le second plat, selon le cas. Tous les autres exemplaires originaux sont filmés en commençant par la première page qui comporte une empreinte d'impression ou d'illustration et en terminant par la dernière page qui comporte une telle empreinte.

Un des symboles suivants apparaîtra sur la dernière image de chaque microfiche, selon le cas: le symbole → signifie "A SUIVRE", le symbole ∇ signifie "FIN".

Les cartes, planches, tableaux, etc., peuvent être filmés à des taux de réduction différents. Lorsque le document est trop grand pour être reproduit en un seul cliché, il est filmé à partir de l'angle supérieur gauche, de gauche à droite, et de haut en bas, en prenant le nombre d'images nécessaire. Les diagrammes suivants illustrent la méthode.

laire  
s détails  
ques du  
nt modifier  
rger une  
e filmage

/  
uées

aire

by errata  
ed to

ent  
ine pelure,  
çon à



32X

June 1874

*Private*

DECEMBER 1, 1873.

CANADA ORGAN AND PIANO COMPANY'S

(LIMITED)



Illustrated Catalogue.

Capital under Charter, - \$250,000.

Office and Manufactory:

HAYTER STREET, - TORONTO.

President:

S. R. BRIGGS.

Secretary:

WM. M. BAIRD.

Factory Manager:

J. M. MILLER.

BELL & CO., Printers, Toronto

## BEVEL FRONT ORGAN.

### STYLE No. 1.

*Special.*

Height, 3 ft. 3 in.; Width, 22¼ in.;  
Length, 3 ft. 7½ in.; 5 Octaves, 1 Set of  
Reeds, Improved Bellows, Solid Black Wal-  
nut Case, Panelled Back, Front and Ends,  
Carved Brackets and Mouldings....price \$90 00

### STYLE No. 2.

Same as No. 1, with Vox Humana  
added.....price, \$105 00



## New Excelsior Case.

### STYLE No. 5.

Height, 3 ft. 5 in.; Width, 23½  
in.; Length, 3 ft. 10½ in.; 5 Octaves,  
2 Sets of Reeds, Five Stops—Prin-  
cipal and Gambo, Melodia, Celeste  
and Forte, Solid Black Walnut Case,  
price..... \$150 00

### STYLE No. 7½.

Same as Style 5, Six Stops, with  
Vox Humana, price..... \$160 00

### STYLE No. 8½.

Same as Style 5, with Treble  
Celeste Action, Seven Stops, price... \$190 00

### STYLE No. 9.

Same as Style 5, with Octave  
Coupler added, Seven Stops, price... \$200 00

### STYLE No. 11.

Same as Style 9, with Sub Bass  
added, Eight Stops, price..... \$215 00

## Excelsior Grand Case.

### STYLE No. 12.

5 Octaves, Double Reed, Six Stops, Diapason Bass and Gambo Bass, Melodia, Celeste, Forte and Vox Humana, Elevated Solid Black Walnut Case, Panelled Back, Front and Ends, New Style Case, Very Handsome, Extra Carving and Moulding on Case, price..... \$200 00

### STYLE No. 14.

Same as 12, 2 3-5 Sets of Reeds, Seven Stops, price..... \$225 00

### STYLE No. 16.

Same as 14, less Vox Humana, with Sub Bass added, Seven Stops, price..... \$250 00

### STYLE No. 18.

Same as 16, with Octave Coupler added, Eight Stops, price..... \$300 00

### STYLE No. 20.

6 Octaves, 2 4-6 Sets of Reeds, otherwise same as 18, price..... \$350 00

## PARLOR GRAND CASE.

### STYLE No. 23.

5 Octaves, 2 3-5 sets Reeds, Seven Stops, Gambo Bass, Diapason Bass, Vox Humana, Forte, Melodia, Celeste and Flute, Elevated Solid Black Walnut Case, Very Handsome, Richly Carved and Moulded, price..... \$275 00

### STYLE No. 24.

Same as 23, with Sub Bass added, price..... \$300 00

### STYLE No. 25.

Same as 24 in case, three full sets reeds, Nine Stops, Bourdon Bass, Diapason Bass, Gamba Bass, Trumpet, Viola, Picolo, Octave Coupler, Vox Humana and Forte, price..... \$300 00

*Private*



*Style No. 1—Price \$90.*

This Style of Case is used also for Style No. 2.

*Private*



*Style 14—Excelsior Organ—Price \$225.*

Height, 3ft. 7 $\frac{1}{2}$ in. ; Width, 23 $\frac{1}{2}$ in. ; Length 3ft. 11in.

This Case is the same used for Style 12, 16,

18 and 20.

1873. 0

fo  
fe  
m  
O  
th  
a  
d  
st  
h  
o  
th  
th  
a  
tr  
o  
n  
v  
o



1873. Organ catalogue. (File: v. small)

*Private*

*M. James papers.*

TORONTO,

1st December, 1873.

*In presenting our Circular and Price List, for the second time, to the Canadian Public, we feel assured that, with the extensive improvements in our facilities for the manufacture of Organs, we are enabled to offer them, embodying the latest and best results of inventive genius and experience in this department. We have no disposition to advance our interests by the general style of egotistical circulars, or to claim that we have reached perfection in Organ making: we only desire a candid, fair judgment, based upon the merits and price of the instruments—a thorough and close supervision, combining all the latest improvements, furnishing instruments at the lowest possible price, and of such excellence that each one will be a standing recommendation of our work.*

*This Price List does not comprise all our new styles, which are coming out every other week, cuts of which will be distributed through our agents' hands.*

225.

16,

*June 1974*

*Private*

DECEMBER 1, 1873.

CANADA ORGAN AND PIANO COMPANY'S

(LIMITED)



Illustrated Catalogue.

Capital under Charter, - \$250,000.

Office and Manufactory:

HAYTER STREET. - TORONTO.

President:

S. R. BRIGGS.

Secretary:

WM. M. BAIRD.

Factory Manager:

J. M. MILLER.

BELL & CO., Printers, Toronto

