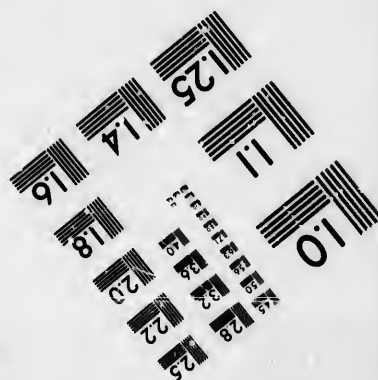
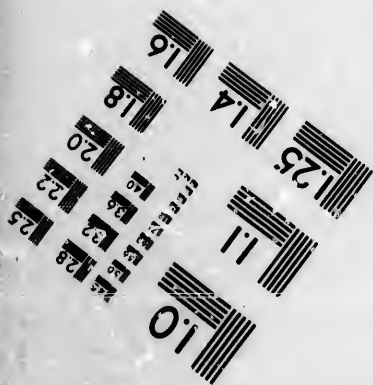
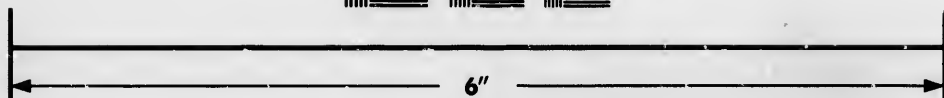
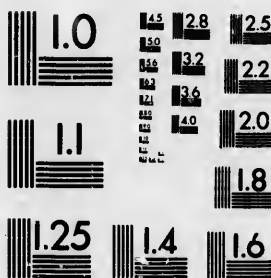


**IMAGE EVALUATION  
TEST TARGET (MT-3)**



**Photographic  
Sciences  
Corporation**

23 WEST MAIN STREET  
WEBSTER, N.Y. 14580  
(716) 872-4503

24  
28  
32  
36  
40  
20  
18

**CIHM/ICMH  
Microfiche  
Series.**

**CIHM/ICMH  
Collection de  
microfiches.**



Canadian Institute for Historical Microreproductions / Institut canadien de microreproductions historiques

11  
10  
K5

**© 1985**

Technical and Bibliographic Notes/Notes techniques et bibliographiques

The Institute has attempted to obtain the best original copy available for filming. Features of this copy which may be bibliographically unique, which may alter any of the images in the reproduction, or which may significantly change the usual method of filming, are checked below.

L'institut a microfilmé le meilleur exemplaire qu'il lui a été possible de se procurer. Les détails de cet exemplaire qui sont peut-être uniques du point de vue bibliographique, qui pouvant modifier une image reproduite, ou qui pouvant exiger une modification dans la méthode normale de filmage sont indiqués ci-dessous.

- |  |  |
|--|--|
| <input type="checkbox"/> Coloured covers/<br>Couverture de couleur   | <input checked="" type="checkbox"/> Coloured pages/<br>Pages de couleur  |
| <input type="checkbox"/> Covers damaged/<br>Couverture endommagée  | <input type="checkbox"/> Pages damaged/<br>Pages endommagées   |
| <input type="checkbox"/> Covers restored and/or laminated/<br>Couverture restaurée et/ou pelliculée  | <input checked="" type="checkbox"/> Pages restored and/or laminated/<br>Pages restaurées et/ou pelliculées   |
| <input type="checkbox"/> Cover title missing/<br>Le titre de couverture manque   | <input checked="" type="checkbox"/> Pages discoloured, stained or foxed/<br>Pages décolorées, tachetées ou piquées   |
| <input type="checkbox"/> Coloured maps/<br>Cartes géographiques en couleur   | <input type="checkbox"/> Pages detached/<br>Pages détachées  |
| <input type="checkbox"/> Coloured ink (i.e. other than blue or black)/<br>Encre de couleur (i.e. autre que bleue ou noire)   | <input checked="" type="checkbox"/> Showthrough/<br>Transparence   |
| <input type="checkbox"/> Coloured plates and/or illustrations/<br>Planches et/ou illustrations en couleur  | <input type="checkbox"/> Quality of print varies/<br>Qualité inégale de l'impression   |
| <input checked="" type="checkbox"/> Bound with other material/<br>Relié avec d'autres documents  | <input type="checkbox"/> Includes supplementary material/<br>Comprend du matériel supplémentaire   |
| <input type="checkbox"/> Tight binding may cause shadows or distortion<br>along interior margin/<br>La reliure serrée peut causer de l'ombre ou de la<br>distorsion le long de la marge intérieure   | <input type="checkbox"/> Only edition available/<br>Seule édition disponible   |
| <input type="checkbox"/> Blank leaves added during restoration may<br>appear within the text. Whenever possible, these<br>have been omitted from filming/<br>Il se peut que certaines pages blanches ajoutées<br>lors d'une restauration apparaissent dans le texte,<br>mais, lorsque cela était possible, ces pages n'ont<br>pas été filmées. | <input type="checkbox"/> Pages wholly or partially obscured by errata<br>slips, tissues, etc., have been refilmed to<br>ensure the best possible image/<br>Les pages totalement ou partiellement<br>obscurcies par un feuillet d'errata, une palure,<br>etc., ont été filmées à nouveau de façon à<br>obtenir la meilleure image possible. |
| <input checked="" type="checkbox"/> Additional comments: / 1 sheet (verso blank)<br>Commentaires supplémentaires:  |  |

This item is filmed at the reduction ratio checked below/  
Ce document est filmé au taux de réduction indiqué ci-dessous.

10X	12X	14X	16X	18X	20X	22X	24X	26X	28X	30X	32X
							✓				

The copy filmed here has been reproduced thanks to the generosity of:

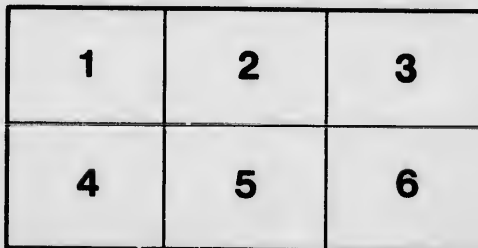
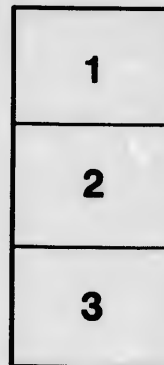
Library of the Public  
Archives of Canada

The images appearing here are the best quality possible considering the condition and legibility of the original copy and in keeping with the filming contract specifications.

Original copies in printed paper covers are filmed beginning with the front cover and ending on the last page with a printed or illustrated impression, or the back cover when appropriate. All other original copies are filmed beginning on the first page with a printed or illustrated impression, and ending on the last page with a printed or illustrated impression.

The last recorded frame on each microfiche shall contain the symbol  $\rightarrow$  (meaning "CONTINUED"), or the symbol  $\nabla$  (meaning "END"), whichever applies.

Maps, plates, charts, etc., may be filmed at different reduction ratios. Those too large to be entirely included in one exposure are filmed beginning in the upper left hand corner, left to right and top to bottom, as many frames as required. The following diagrams illustrate the method:



L'exemplaire filmé fut reproduit grâce à la générosité de:

La bibliothèque des Archives  
publiques du Canada

Les images suivantes ont été reproduites avec le plus grand soin, compte tenu de la condition et de la netteté de l'exemplaire filmé, et en conformité avec les conditions du contrat de filmage.

Les exemplaires originaux dont la couverture en papier est imprimée sont filmés en commençant par le premier plat et en terminant soit par la dernière page qui comporte une empreinte d'impression ou d'illustration, soit par le second plat, selon le cas. Tous les autres exemplaires originaux sont filmés en commençant par la première page qui comporte une empreinte d'impression ou d'illustration et en terminant par la dernière page qui comporte une telle empreinte.

Un des symboles suivants apparaîtra sur la dernière image de chaque microfiche, selon le cas: le symbole  $\rightarrow$  signifie "A SUIVRE", le symbole  $\nabla$  signifie "FIN".

Les cartes, planches, tableaux, etc., peuvent être filmés à des taux de réduction différents. Lorsque le document est trop grand pour être reproduit en un seul cliché, il est filmé à partir de l'angle supérieur gauche, de gauche à droite, et de haut en bas, en prenant le nombre d'images nécessaire. Les diagrammes suivants illustrent la méthode.

errata  
to

pelure.  
on à



32X

SIR :

be sec  
an un  
until  
too ex  
and re  
to att  
and  
from t

W  
others,  
such R  
hundre  
boats,  
of Pas  
of the  
corresp  
the an  
thousan  
Compa  
Contin

W  
of your  
most g

I  
a long  
this to  
gress o  
taneous  
years.  
the Co

Th

As  
over a  
neighb  
ment of

As  
entitled  
three m  
determin  
"Niaga  
serious t

Th  
It is  
this gre

To

HAMILTON, 15th FEBRUARY, 1850.

SIR:

HAVING suggested a plan by which the ultimate construction of the GREAT WESTERN RAILROAD may be secured, I beg to submit the same for your *serious consideration*, with the view of obtaining your assistance in so important an undertaking, for it appears to me, that we cannot expect any material support from either England or the United States until we establish a confidence, *by first doing something for ourselves*. It has proved unfortunate, in attempting *at once* too extensive a work, and with it, necessary aid from abroad, we have thus failed; but should we rely on our own energies and resources, and undertake that which is within our means, we will assuredly accomplish the greater object. But, in order to attain even what I am about to propose, one and all who may feel an interest, (and who does not?) *must co-operate and subscribe to the best of his ability*. Though you are doubtless aware that this City will derive many advantages from the proposed Railroad, I will take the liberty of placing the most prominent before you.

With a vigorous prosecution of the work, confidence would be restored, and cause the immediate arrival of capitalists and others, desirous of investment in Real Estate, or for the many objects which will be created by the progress and completion of such Railroad; in connexion with the Company, there will be immense Mechanical works, affording employment to many hundreds; you will have the facilities of rapid communication East and West; there will be several additional lines of Steamboats, with the various ports on the Lake; this City will be the depot for the traffic to and from the West, involving the transit of Passengers, Goods and Produce, to an extent equal to, and surpassing, that of Buffalo, (and which have been the origin of the extraordinary growth of that City), Hamilton would thus progress *in an unparalleled degree*, together with a corresponding rise in the value of Real Estate; the expenditure of Capital, not only in the building of the Road, but from the annual disbursements by the Company and Travellers, amounting to at least £300,000 per annum, would employ thousands of people, and produce rapid and continued prosperity to the whole country; and lastly, that the Stock of the Company will prove a profitable and safe investment, the general opinion being, that it will be the best paying Road on this Continent.

With such results before you, (and I submit they are not exaggerated,) the construction of this Road is deserving of your utmost exertions, and it cannot be questioned, that if you, and all who are interested, will use your best efforts, the most gratifying success will immediately follow.

I propose to adopt the course so successfully pursued in the United States, which is:—in contemplating a long line of Road, only a portion of it is first undertaken. I therefore suggest that the central division, from this to London, should be determined upon, as it is of most consequence to the Province, while its progress of construction will have the effect of inducing the subscription of the whole Capital Stock—cause almost simultaneous operations on the Western and Eastern divisions, and so ensure the completion of the entire line in less than three years. One other important advantage in first proceeding with the Central Division, is, that it is of such length as to entitle the Company to claim the Government Guarantee for one-half of its cost.

The following is my estimate of the means by which the Road, from this to London, may be secured:—

Amount to be paid by Shareholders,	- - - - -	£127,000
Loan upon Government Guarantee,	- - - - -	267,000
Amount payable to Contractors in Stock,	- - - - -	140,000

£534,000

As the sum required (£127,000) from Shareholders will be payable in instalments not exceeding five per cent, over a period of *two years* (or £63,500 each year,) it is even within the ability of the inhabitants of this City and neighborhood, if due consideration is given to the increased means, which will very soon flow from a resolute commencement of the road.

As the Railroad is of such paramount importance to the whole country, it is surely most worthy of, and entitled to, your assistance, and if all who are now appealed to do that which may be reasonably expected of them, within three months, the work may go on with the certainty of success. Therefore, let us now unite, and with one more, but determined effort, secure such vast advantages, which by neglect or indifference will be sacrificed; for so sure as the "Niagara and Detroit" Company is Chartered, (and it will be, if we make no speedy move,) so sure will it prove a serious blow to Provincial interests, and blight the prosperity of this City.

The Road cannot be commenced until the sum required is Subscribed for.

It is my intention to wait upon you in a few days, with a Stock Book, and I trust to find you prepared to encourage this great and good Work.

I remain,

Your Most Obedient Humble Servant,

J. T. GILKISON.

