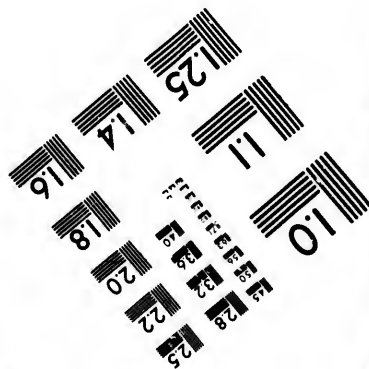
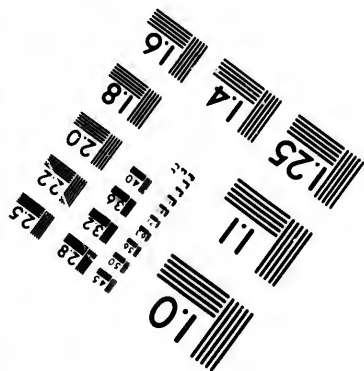
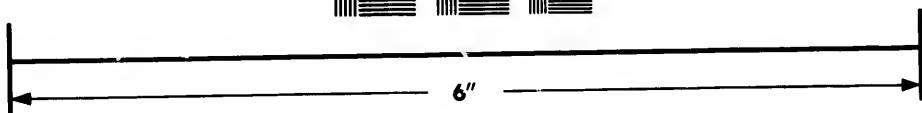
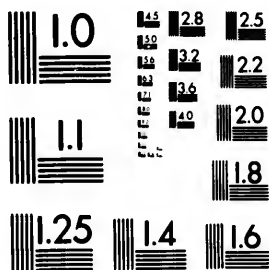


IMAGE EVALUATION TEST TARGET (MT-3)



Photographic
Sciences
Corporation

23 WEST MAIN STREET
WEBSTER, N.Y. 14580
(716) 872-4503

24
28
32
36
22
20
18

**CIHM/ICMH
Microfiche
Series.**

**CIHM/ICMH
Collection de
microfiches.**



Canadian Institute for Historical Microreproductions / Institut canadien de microreproductions historiques

10
14
18

© 1981

Technical and Bibliographic Notes/Notes techniques et bibliographiques

The Institute has attempted to obtain the best original copy available for filming. Features of this copy which may be bibliographically unique, which may alter any of the images in the reproduction, or which may significantly change the usual method of filming, are checked below.

L'Institut a microfilmé le meilleur exemplaire qu'il lui a été possible de se procurer. Les détails de cet exemplaire qui sont peut-être uniques du point de vue bibliographique, qui peuvent modifier une image reproduite, ou qui peuvent exiger une modification dans la méthode normale de filmage sont indiqués ci-dessous.

- Coloured covers/
Couverture de couleur
- Covers damaged/
Couverture endommagée
- Covers restored and/or laminated/
Couverture restaurée et/ou pelliculée
- Cover title missing/
Le titre de couverture manque
- Coloured maps/
Cartes géographiques en couleur
- Coloured ink (i.e. other than blue or black)/
Encre de couleur (i.e. autre que bleue ou noire)
- Coloured plates and/or illustrations/
Planches et/ou illustrations en couleur
- Bound with other material/
Relié avec d'autres documents
- Tight binding may cause shadows or distortion
along interior margin/
La reliure serrée peut causer de l'ombre ou de la
distortion le long de la marge intérieure
- Blank leaves added during restoration may
appear within the text. Whenever possible, these
have been omitted from filming/
Il se peut que certaines pages blanches ajoutées
lors d'une restauration apparaissent dans le texte,
mais, lorsque cela était possible, ces pages n'ont
pas été filmées.
- Additional comments:/
Commentaires supplémentaires:

- Coloured pages/
Pages de couleur
- Pages damaged/
Pages endommagées
- Pages restored and/or laminated/
Pages restaurées et/ou pelliculées
- Pages discoloured, stained or foxed/
Pages décolorées, tachetées ou piquées
- Pages detached/
Pages détachées
- Showthrough/
Transparence
- Quality of print varies/
Qualité inégale de l'impression
- Includes supplementary material/
Comprend du matériel supplémentaire
- Only edition available/
Seule édition disponible
- Pages wholly or partially obscured by errata
slips, tissues, etc., have been refilmed to
ensure the best possible image/
Les pages totalement ou partiellement
obscurcies par un feuillet d'errata, une pelure,
etc., ont été filmées à nouveau de façon à
obtenir la meilleure image possible.

This item is filmed at the reduction ratio checked below/
Ce document est filmé au taux de réduction indiqué ci-dessous

10X	14X	18X	22X	26X	30X
<input type="checkbox"/>	<input type="checkbox"/>	<input type="checkbox"/>	<input type="checkbox"/>	<input checked="" type="checkbox"/>	<input type="checkbox"/>
12X	16X	20X	24X	28X	32X

The copy filmed here has been reproduced thanks to the generosity of:

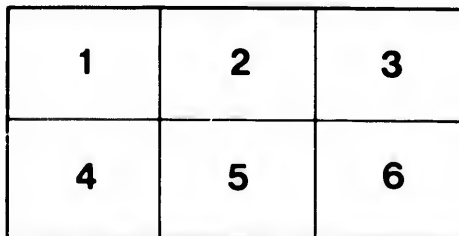
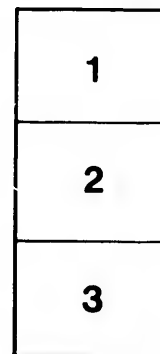
Library Division
Provincial Archives of British Columbia

The images appearing here are the best quality possible considering the condition and legibility of the original copy and in keeping with the filming contract specifications.

Original copies in printed paper covers are filmed beginning with the front cover and ending on the last page with a printed or illustrated impression, or the back cover when appropriate. All other original copies are filmed beginning on the first page with a printed or illustrated impression, and ending on the last page with a printed or illustrated impression.

The last recorded frame on each microfiche shall contain the symbol \rightarrow (meaning "CONTINUED"), or the symbol ∇ (meaning "END"), whichever applies.

Maps, plates, charts, etc., may be filmed at different reduction ratios. Those too large to be entirely included in one exposure are filmed beginning in the upper left hand corner, left to right and top to bottom, as many frames as required. The following diagrams illustrate the method:



L'exemplaire filmé fut reproduit grâce à la générosité de:

Library Division
Provincial Archives of British Columbia

Les images suivantes ont été reproduites avec le plus grand soin, compte tenu de la condition et de la netteté de l'exemplaire filmé, et en conformité avec les conditions du contrat de filmage.

Les exemplaires originaux dont la couverture en papier est imprimée sont filmés en commençant par le premier plat et en terminant soit par la dernière page qui comporte une empreinte d'impression ou d'illustration, soit par le second plat, selon le cas. Tous les autres exemplaires originaux sont filmés en commençant par la première page qui comporte une empreinte d'impression ou d'illustration et en terminant par la dernière page qui comporte une telle empreinte.

Un des symboles suivants apparaîtra sur la dernière image de chaque microfiche, selon le cas: le symbole \rightarrow signifie "A SUIVRE", le symbole ∇ signifie "FIN".

Les cartes, planches, tableaux, etc., peuvent être filmés à des taux de réduction différents. Lorsque le document est trop grand pour être reproduit en un seul cliché, il est filmé à partir de l'angle supérieur gauche, de gauche à droite, et de haut en bas, en prenant le nombre d'images nécessaire. Les diagrammes suivants illustrent la méthode.

Nwp
9.11.3
A63



10

11

12

a
la
th
st
A
th
e
u
n
w
in
a
w
th
P
th
r
s

P

NWP
9.11.35C
AG33

ANTLER BED-ROCK FLUME COMPANY LIMITED.

Duly Incorporated and Registered under the Joint Stock Company's Act, 1860.

Capital, - - - \$60,000

In 2,400 Shares, of \$25 each, of which about 500 Shares only remain for subscription.
Calls not to exceed \$5 per Share, nor to be made at less intervals than one month.

CHAIRMAN—GEORGE CRUICKSHANK, Esq.

DIRECTORS:

P. M. BACKUS, Esq.,	J. P. COUCH, Esq.,
G. J. FINDLAY, Esq.,	A. F. MAIN, Esq.,
C. E. SIMPSON, Esq.,	C. W. WALLACE, Esq.

SECRETARY—J. J. COCHRANE, Esq.

BANKERS—Bank of British Columbia.

VICTORIA OFFICE—At J. J. Cochrane's, Esq., Government Street.

REGISTERED OFFICE—At New Westminster.

A Company formed in Cariboo last season obtained from the Government of British Columbia a grant of the Bed of Antler Creek 16½ miles in length by 100 feet in width, for the purpose of laying a Bed-rock Flume and Hydraulic Washing.

The Antler Bed-rock Flume Company (Limited), has been organized for the purpose of working the above ground, the proprietors of the grant having accepted for their interest 1200 paid up shares.

A Lease for 10 years has been given by the Government of British Columbia direct to the Antler Bed-rock Flume Company (Limited).

200 Shares have been reserved, to be disposed of by the Directors hereafter for the benefit of the Company, as circumstances may determine.

It is confidently believed by experienced miners that the Bed-rock Flume system will work an entire revolution in the mining operation of Cariboo and render large districts available which under the present system are valueless.

Great excitement was caused in 1861 by the rich deposits of gold found on Antler Creek: much ground yielded over \$1000 per foot. It was found, however, that except where the soil was shallow, it was impossible to reach the bed-rock and work to advantage, on account of the immense amount of water and the looseness of the soil, consequently the Creek gradually became abandoned.

The amount of water and character of the soil are highly favorable for hydraulic working, while the fall in the Creek renders it most suitable for a Bed rock Flume.

The soil on Antler Creek contains gold generally throughout, from the surface down, whilst the bed-rock deposits have been found to be very rich, the prospects therefore of the undertaking proving most profitable, amount almost to a certainty.

Besides the gold found in the ground, worked by the Company, it will derive great profit from the tailings washed into the flume from adjoining claims; it is this source of revenue alone which renders Bed-rock Flumes so profitable in California.

Under these circumstances the Directors can confidently recommend the undertaking to the support of the public.

Applications for the remaining shares to be made to the Secretary without delay.

By order,

J. J. COCHRANE, SECRETARY,
Government Street.

PROVINCIAL ARCHIVES OF B. C.

222850

