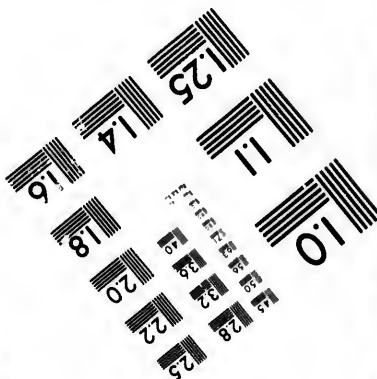
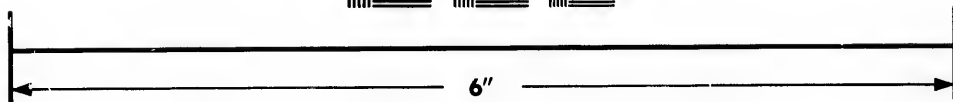
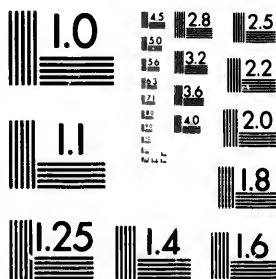
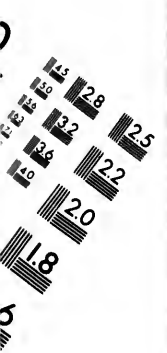


**IMAGE EVALUATION
TEST TARGET (MT-3)**



**Photographic
Sciences
Corporation**

23 WEST MAIN STREET
WEBSTER, N.Y. 14580
(716) 872-4503



**CIHM/ICMH
Microfiche
Series.**

**CIHM/ICMH
Collection de
microfiches.**



Canadian Institute for Historical Microreproductions / Institut canadien de microreproductions historiques



© 1981

Technical and Bibliographic Notes/Notes techniques et bibliographiques

The Institute has attempted to obtain the best original copy available for filming. Features of this copy which may be bibliographically unique, which may alter any of the images in the reproduction, or which may significantly change the usual method of filming, are checked below.

L'institut a microfilmé le meilleur exemplaire qu'il lui a été possible de se procurer. Les détails de cet exemplaire qui sont peut-être uniques du point de vue bibliographique, qui peuvent modifier une image reproduite, ou qui peuvent exiger une modification dans la méthode normale de filmage sont indiqués ci-dessous.

- | | |
|---|---|
| <input type="checkbox"/> Coloured covers/
Couverture de couleur | <input checked="" type="checkbox"/> Coloured pages/
Pages de couleur |
| <input type="checkbox"/> Covers damaged/
Couverture endommagée | <input type="checkbox"/> Pages damaged/
Pages endommagées |
| <input type="checkbox"/> Covers restored and/or laminated/
Couverture restaurée et/ou pelliculée | <input type="checkbox"/> Pages restored and/or laminated/
Pages restaurées et/ou pelliculées |
| <input type="checkbox"/> Cover title missing/
Le titre de couverture manque | <input checked="" type="checkbox"/> Pages discoloured, stained or foxed/
Pages décolorées, tachetées ou piquées |
| <input type="checkbox"/> Coloured maps/
Cartes géographiques en couleur | <input type="checkbox"/> Pages detached/
Pages détachées |
| <input type="checkbox"/> Coloured ink (i.e. other than blue or black)/
Encre de couleur (i.e. autre que bleue ou noire) | <input type="checkbox"/> Showthrough/
Transparence |
| <input type="checkbox"/> Coloured plates and/or illustrations/
Planches et/ou illustrations en couleur | <input type="checkbox"/> Quality of print varies/
Qualité inégale de l'impression |
| <input type="checkbox"/> Bound with other material/
Relié avec d'autres documents | <input type="checkbox"/> Includes supplementary material/
Comprend du matériel supplémentaire |
| <input type="checkbox"/> Tight binding may cause shadows or distortion along interior margin/
La reliure serrée peut causer de l'ombre ou de la distorsion le long de la marge intérieure | <input type="checkbox"/> Only edition available/
Seule édition disponible |
| <input type="checkbox"/> Blank leaves added during restoration may appear within the text. Whenever possible, these have been omitted from filming/
Il se peut que certaines pages blanches ajoutées lors d'une restauration apparaissent dans le texte, mais, lorsque cela était possible, ces pages n'ont pas été filmées. | <input type="checkbox"/> Pages wholly or partially obscured by errata slips, tissues, etc., have been refilmed to ensure the best possible image/
Les pages totalement ou partiellement obscurcies par un feuillet d'errata, une pelure, etc., ont été filmées à nouveau de façon à obtenir la meilleure image possible. |
| <input type="checkbox"/> Additional comments:
Commentaires supplémentaires: | |

This item is filmed at the reduction ratio checked below/
Ce document est filmé au taux de réduction indiqué ci-dessous.

10X	14X	18X	22X	26X	30X
<input type="checkbox"/>	<input type="checkbox"/>	<input type="checkbox"/>	<input checked="" type="checkbox"/>	<input type="checkbox"/>	<input type="checkbox"/>
12X	16X	20X	24X	28X	32X

The copy filmed here has been reproduced thanks to the generosity of:

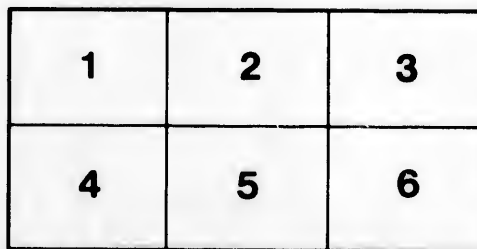
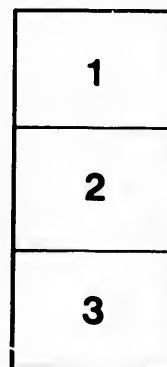
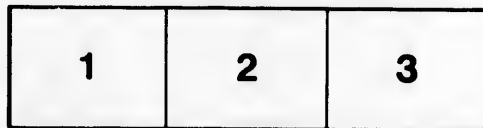
Library Division
Provincial Archives of British Columbia

The images appearing here are the best quality possible considering the condition and legibility of the original copy and in keeping with the filming contract specifications.

Original copies in printed paper covers are filmed beginning with the front cover and ending on the last page with a printed or illustrated impression, or the back cover when appropriate. All other original copies are filmed beginning on the first page with a printed or illustrated impression, and ending on the last page with a printed or illustrated impression.

The last recorded frame on each microfiche shall contain the symbol \rightarrow (meaning "CONTINUED"), or the symbol ∇ (meaning "END"), whichever applies.

Maps, plates, charts, etc., may be filmed at different reduction ratios. Those too large to be entirely included in one exposure are filmed beginning in the upper left hand corner, left to right and top to bottom, as many frames as required. The following diagrams illustrate the method:



L'exemplaire filmé fut reproduit grâce à la générosité de:

Library Division
Provincial Archives of British Columbia

Les images suivantes ont été reproduites avec le plus grand soin, compte tenu de la condition et de la netteté de l'exemplaire filmé, et en conformité avec les conditions du contrat de filmage.

Les exemplaires originaux dont la couverture en papier est imprimée sont filmés en commençant par le premier plat et en terminant soit par la dernière page qui comporte une empreinte d'impression ou d'illustration, soit par le second plat, selon le cas. Tous les autres exemplaires originaux sont filmés en commençant par la première page qui comporte une empreinte d'impression ou d'illustration et en terminant par la dernière page qui comporte une telle empreinte.

Un des symboles suivants apparaîtra sur la dernière image de chaque microfiche, selon le cas: le symbole \rightarrow signifie "A SUIVRE", le symbole ∇ signifie "FIN".

Les cartes, planches, tableaux, etc., peuvent être filmés à des taux de réduction différents. Lorsque le document est trop grand pour être reproduit en un seul cliché, il est filmé à partir de l'angle supérieur gauche, de gauche à droite, et de haut en bas, en prenant le nombre d'images nécessaire. Les diagrammes suivants illustrent la méthode.

QUEEN'S BIRTHDAY

NWP
971.94
67860
1878



CELEBRATION,

24TH MAY, 1873.

VICTORIA, B. C.

PROGRAMME OF REGATTA.

1. Four-oared Race for Youths under 19; boats under 22 feet. Prize \$25; entrance fee \$2 50.
Dart No. 3, white, inside station.
Dart No. 2, blue and white, middle station.
Dart No. 1, light blue, outside station.
2. Race for Chinook Canoes. Prize \$2 per paddle, not to exceed 12.
3. Senior Single Sculls. Prize \$30; entrance fee \$2 50.
W. Clarke, white, inside.
J. Stewart, blue, middle.
J. Seeley, pink, outside.
4. Blue Jackets, cutters' race, handicapped by agreement 1st prize \$35; 2nd prize \$10. No entrance fee.
Opal No. 1, black and white.
Opal No. 2, white with blue cross.
Rocket No. 1, green.
5. Single Sculls for Youths under 19. 1st prize \$20; 2nd prize \$5; entrance fee \$1.
J. Seeley, pink, inside.
S. Wootton, light blue and white, middle.
W. Cotsford, blue & white stripes outside.
6. Race for Northern Canoes. Prize \$2 per paddle, not to exceed 15.
7. Blue Jackets, whalers' race Prize \$20; no entrance fee.
Rocket No. 1, green.
Rocket No. 2, red.
Opal No. 1, black and white.
8. Four-oared Race, boats under 22 feet. Prize \$40; entrance fee \$2 50.
Dart No. 3, red and white, inside.
Bonanza, white, next.
Dart No. 1, light blue and white, next.
Annie Fraser (handicap'd 6 lengths) outside
9. Naval Dingy Race (short course). Prize \$12; no entrance fee.
Opal No. 1.
Opal No. 2.
10. Rob Roy Canoe (short course). 1st prize \$10; 2nd prize \$5; entrance fee \$1.
R. C. Cridge, red and white, inside.
S. Wootton, light blue and white, middle.
J. Caton, blue, outside.
11. Greasy Pole. Prize \$10; no entrance fee.
12. Swimming Match. Prize \$5; no entrance fee.

[OVER.]

QUEEN'S BIRTHDAY



CELEBRATION,

24TH MAY, 1878.

VICTORIA, B. C.

PATRONS.

HIS HONOR THE LIEUTENANT-GOVERNOR.
THE SENIOR NAVAL OFFICER AND OFFICERS OF
H. M. NAVY.
HIS WORSHIP THE MAYOR AND CITY COUNCIL.

OFFICERS FOR THE REGATTA.

REFEREE.—Capt. Cooper.

STARTER.—R. Brodrick.

JUDGES.—Lieut Henderson, R. N., A. Keast.

TREASURER.—B. P. Griffin.

ORGANIZER FOR INDIAN RACES.—C. Seymour.

JUDGE ON DEADMAN'S ISLAND.—T. Cooper.

EXECUTIVE COMMITTEE.—Capt. Cooper, Chairman; G. Jay, Secretary; W. Bennett, Capt. Clarke, J. Davies, J. S. Drummond, C. T. Dupont, A. S. Farwell, E. Fletcher, J. Griffiths, Col. Houghton, R. Hall, Capt. Harris, R. N., Lieut. Cray, R. N., Lieut. Henderson, R. N., Charles Phillips, Louis McQuade, E. C. Baker, Thomas Jones, A. Keast, J. B. Matthews, E. B. Marvin, A. Rome, G. M. Sproat, Lieut. Ross, R. N., J. H. Turner, P. Woollacott, R. Wolfenden, C. Gowen, W. G. Cameron, F. Paine, J. Wilson.

The Regatta will take place at the Gorge, Victoria Arm, at 1 p. m.

All races to be open to all comers.

Three boats to start in each race, or there shall be no race.

First race to start at 1 p. m. All competitors to be at the starting post at least five minutes before the fixed time. Each race to start half an hour after the previous one.

The course to be, as usual, from the Gorge around Deadman's Island and back, excepting for races Nos 9, 10, 11, and 12. No one shall be allowed to compete in races Nos. 11 and 12 unless suitably attired.

A RIFLE MATCH will take place at the Butts, between the Seattle and Victoria Rifle Teams, at 9 a. m.

A BASE BALL MATCH, between the Alki B. B. Club of Seattle, and the Amity B. B. Club of Victoria, at 9 a. m.

One hundred dollars has been apportioned by the Committee towards the expenses in connection with the Rifle and Base Ball Matches.

[OVER.]

297456

