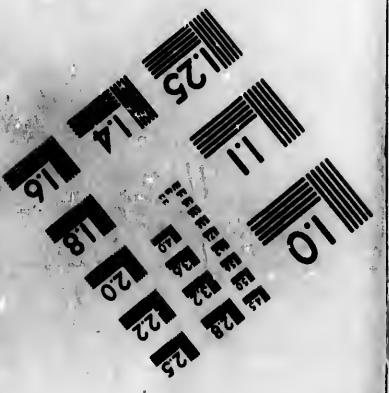
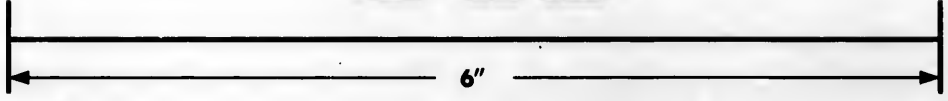
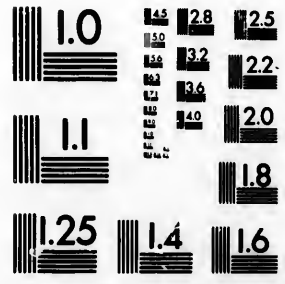


**IMAGE EVALUATION  
TEST TARGET (MT-3)**



**Photographic  
Sciences  
Corporation**

23 WEST MAIN STREET  
WEBSTER, N.Y. 14580  
(716) 872-4503

10  
16  
18  
20  
22  
25  
28  
32

**CIHM/ICMH  
Microfiche  
Series.**

**CIHM/ICMH  
Collection de  
microfiches.**



Canadian Institute for Historical Microreproductions / Institut canadien de microreproductions historiques

10  
11  
12  
13  
14  
15  
16  
17  
18  
19  
20  
21  
22  
23  
24  
25  
26  
27  
28  
29  
30  
31  
32

**© 1984**

Technical and Bibliographic Notes/Notes techniques et bibliographiques

The Institute has attempted to obtain the best original copy available for filming. Features of this copy which may be bibliographically unique, which may alter any of the images in the reproduction, or which may significantly change the usual method of filming, are checked below.

L'Institut a microfilmé le meilleur exemplaire qu'il lui a été possible de se procurer. Les détails de cet exemplaire qui sont peut-être uniques du point de vue bibliographique, qui peuvent modifier une image reproduite, ou qui peuvent exiger une modification dans la méthode normale de filmage sont indiqués ci-dessous.

- |  |  |
|--|--|
| <input type="checkbox"/> Coloured covers/<br>Couverture de couleur   | <input type="checkbox"/> Coloured pages/<br>Pages de couleur   |
| <input type="checkbox"/> Covers damaged/<br>Couverture endommagée  | <input type="checkbox"/> Pages damaged/<br>Pages endommagées   |
| <input type="checkbox"/> Covers restored and/or laminated/<br>Couverture restaurée et/ou pelliculée  | <input checked="" type="checkbox"/> Pages restored and/or laminated/<br>Pages restaurées et/ou pelliculées   |
| <input type="checkbox"/> Cover title missing/<br>Le titre de couverture manque   | <input checked="" type="checkbox"/> Pages discoloured, stained or foxed/<br>Pages décolorées, tachetées ou piquées   |
| <input type="checkbox"/> Coloured maps/<br>Cartes géographiques en couleur   | <input type="checkbox"/> Pages detached/<br>Pages détachées  |
| <input type="checkbox"/> Coloured ink (i.e. other than blue or black)/<br>Encre de couleur (i.e. autre que bleue ou noire)   | <input checked="" type="checkbox"/> Showthrough/<br>Transparence   |
| <input type="checkbox"/> Coloured plates and/or illustrations/<br>Planches et/ou illustrations en couleur  | <input type="checkbox"/> Quality of print varies/<br>Qualité inégale de l'impression   |
| <input type="checkbox"/> Bound with other material/<br>Relié avec d'autres documents   | <input type="checkbox"/> Includes supplementary material/<br>Comprend du matériel supplémentaire   |
| <input type="checkbox"/> Tight binding may cause shadows or distortion<br>along interior margin/<br>La reliure serrée peut causer de l'ombre ou de la<br>distortion le long de la marge intérieure   | <input type="checkbox"/> Only edition available/<br>Seule édition disponible   |
| <input type="checkbox"/> Blank leaves added during restoration may<br>appear within the text. Whenever possible, these<br>have been omitted from filming/<br>Il se peut que certaines pages blanches ajoutées<br>lors d'une restauration apparaissent dans le texte,<br>mais, lorsque cela était possible, ces pages n'ont<br>pas été filmées. | <input type="checkbox"/> Pages wholly or partially obscured by errata<br>slips, tissues, etc., have been refilmed to<br>ensure the best possible image/<br>Les pages totalement ou partiellement<br>obscurcies par un feuillet d'errata, une pelure,<br>etc., ont été filmées à nouveau de façon à<br>obtenir la meilleure image possible. |
| <input type="checkbox"/> Additional comments:/<br>Commentaires supplémentaires:  |  |

This item is filmed at the reduction ratio checked below/  
Ce document est filmé au taux de réduction indiqué ci-dessous.

10X	12X	14X	16X	18X	20X	22X	24X	26X	28X	30X	32X
<input type="checkbox"/>	<input type="checkbox"/>	<input type="checkbox"/>	<input type="checkbox"/>	<input type="checkbox"/>	<input type="checkbox"/>	<input type="checkbox"/>	<input checked="" type="checkbox"/>	<input type="checkbox"/>	<input type="checkbox"/>	<input type="checkbox"/>	<input type="checkbox"/>

The copy filmed here has been reproduced thanks to the generosity of:

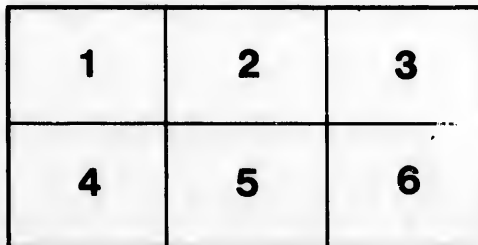
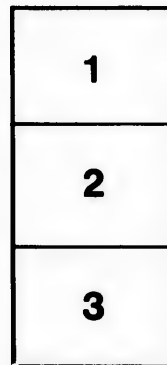
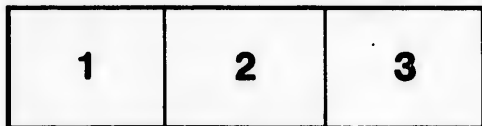
Library of the Public  
Archives of Canada

The images appearing here are the best quality possible considering the condition and legibility of the original copy and in keeping with the filming contract specifications.

Original copies in printed paper covers are filmed beginning with the front cover and ending on the last page with a printed or illustrated impression, or the back cover when appropriate. All other original copies are filmed beginning on the first page with a printed or illustrated impression, and ending on the last page with a printed or illustrated impression.

The last recorded frame on each microfiche shall contain the symbol  $\rightarrow$  (meaning "CONTINUED"), or the symbol  $\nabla$  (meaning "END"), whichever applies.

Maps, plates, charts, etc., may be filmed at different reduction ratios. Those too large to be entirely included in one exposure are filmed beginning in the upper left hand corner, left to right and top to bottom, as many frames as required. The following diagrams illustrate the method:



L'exemplaire filmé fut reproduit grâce à la générosité de:

La bibliothèque des Archives  
publiques du Canada

Les images suivantes ont été reproduites avec le plus grand soin, compte tenu de la condition et de la netteté de l'exemplaire filmé, et en conformité avec les conditions du contrat de filmage.

Les exemplaires originaux dont la couverture en papier est imprimée sont filmés en commençant par le premier plat et en terminant soit par la dernière page qui comporte une empreinte d'impression ou d'illustration, soit par le second plat, selon le cas. Tous les autres exemplaires originaux sont filmés en commençant par la première page qui comporte une empreinte d'impression ou d'illustration et en terminant par la dernière page qui comporte une telle empreinte.

Un des symboles suivants apparaîtra sur la dernière image de chaque microfiche, selon le cas: le symbole  $\rightarrow$  signifie "A SUIVRE", le symbole  $\nabla$  signifie "FIN".

Les cartes, planches, tableaux, etc., peuvent être filmés à des taux de réduction différents. Lorsque le document est trop grand pour être reproduit en un seul cliché, il est filmé à partir de l'angle supérieur gauche, de gauche à droite, et de haut en bas, en prenant le nombre d'images nécessaire. Les diagrammes suivants illustrent la méthode.

ails  
du  
odifier  
une  
image

rrata  
o

elure,  
n à



sc

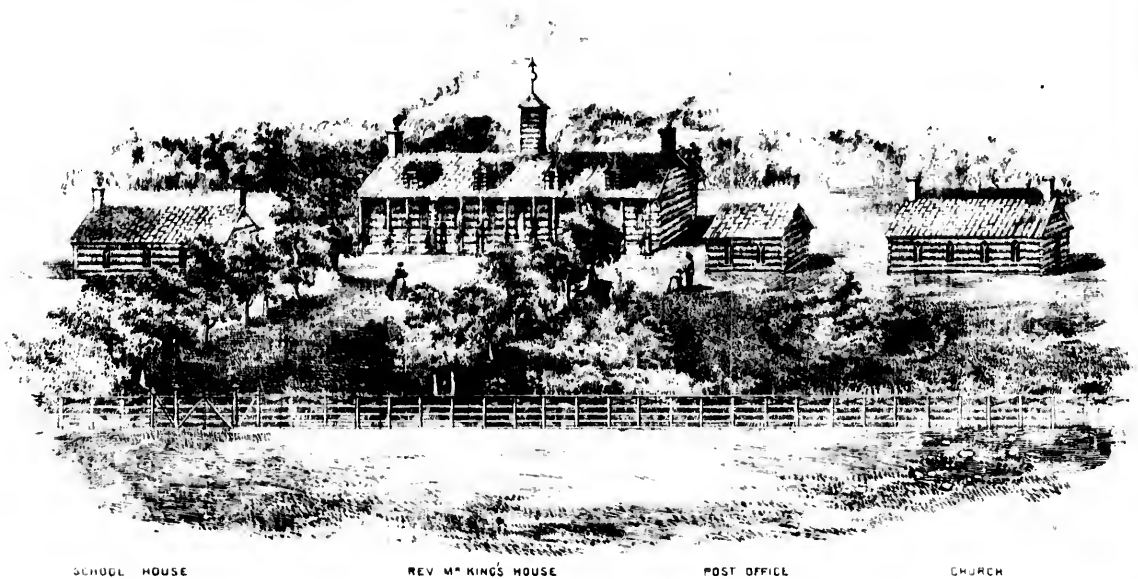
The  
in  
wh  
be  
of  
C  
be

the  
by  
th  
in  
co

in  
th  
tw

an  
of  
fr

be  
pu



SCHOOL HOUSE

REV. M. KING'S HOUSE

POST OFFICE

CHURCH

## FUGITIVE SLAVES IN CANADA.

### ELGIN SETTLEMENT.

There are upwards of 30,000 coloured persons in Canada, mostly fugitives from the United States. Their numbers are increasing rapidly by the operation of the Fugitive Slave Law, which gives them no resting place till they reach Canada, where they generally arrive in a destitute condition, stripped of everything but life. The occasion of the Elgin Settlement, being formed for their social and moral improvement, was this: The Rev. WILLIAM KING having become heir to a number of slaves in Louisiana, set them free as soon as they came into his possession, paid their passage, and accompanied them to Canada, a distance of 1500 miles. On his arrival he found the fugitives in that degraded condition in which slavery had left them, most of them without a home and without a friend, and for whose soul no man cared.

An appeal was made to the Christian community on their behalf, which was responded to by the friends of the slave there. An Association was formed, under the patronage of LORD ELGIN, then Governor General, which was incorporated by Act of Parliament in 1850, under the title of the Elgin Association. Mr. King was chosen unanimously to superintend the Settlement. Eighteen thousand dollars were subscribed, and nine thousand acres of land secured from Government in the Township of Raleigh, and County of Kent. These lands were divided into farms of fifty acres each, and given to coloured settlers at a nominal price.

One of the objects contemplated by this effort was to show by practical experiment that the coloured man, when placed in favourable circumstances, could support himself by his own industry, and to refute the charge brought against him by the pro-slavery party in the United States, that he would not support himself when set free. On these lands upwards of two hundred families are now settled, supporting themselves by their own industry.

Lord Althorp, now Earl SPENCER, of England, who visited the Settlement in 1857, and Professor Gibson of Belfast, and the Rev. William McClure of Londonderry, who spent two days, in 1858, in visiting the Settlement, speak favourably of their improvement. The Rev. Dr. Burns and Dr. Willis of Toronto are Vice-Presidents of the Elgin Association, and frequently visit the Settlement. They also testify to the success of the experiment, and the industry of the settlers.

On these lands a church has been erected, to supply the adult population with the means of grace; and schools have been established, to give the children a good education. These schools are now attended by upwards of one hundred pupils. The number would be greatly increased by enlarging the accommodation, and erecting permanent buildings.

1220

(64)

The buildings are all of a temporary kind, and will require to be replaced by others of a more substantial and permanent nature. The schools will require the support of friends for some time to come. It is on behalf of the spiritual and educational part of the enterprise that we now appeal to you; we ask nothing for their temporal support. We ask you only to aid us in the erection of good and substantial buildings, to place the schools on a permanent and efficient basis, and to create a few bursaries for the purpose of preparing young men of piety and talents for future usefulness, either in Canada, the United States, or Africa.

Already the schools have borne fruit. A few teachers, trained at the schools, have been sent out to different parts of the province, where they are now usefully employed. Richard M. Johnson, one of the fugitives, is now studying in the University of Edinburgh as a medical missionary.

A few thousand pounds will be required for the objects contemplated. The principal cities in Ireland and Scotland have been visited, where persons of all denominations have sympathised with the movement, and have aided with their donations this effort to improve the social and moral condition of a long-neglected and deeply injured race. We now visit your city on behalf of the same object, and ask you to aid us in giving the Bible to the fugitive, and endowing him with the capacity to read it.

Your donations may be sent to ANDREW NIELSON, Esq., Cashier of the Bank of Scotland, Glasgow; or to MESSRS. BARCLAY, BEVAN & Co., Bankers, London, to the credit of the Buxton Institute.

WM. KING, } Deputation from  
ROBT. BURNS, D. D. } Canada.

N. B.—All communications regarding the Schools at Buxton may be addressed to the Rev. WILLIAM KING, or Rev. ROBERT BURNS, D. D., 13 Euston Road, King's Cross, London.

July, 1860.

manent  
al and  
& von  
and to  
haha,

rts of  
r the

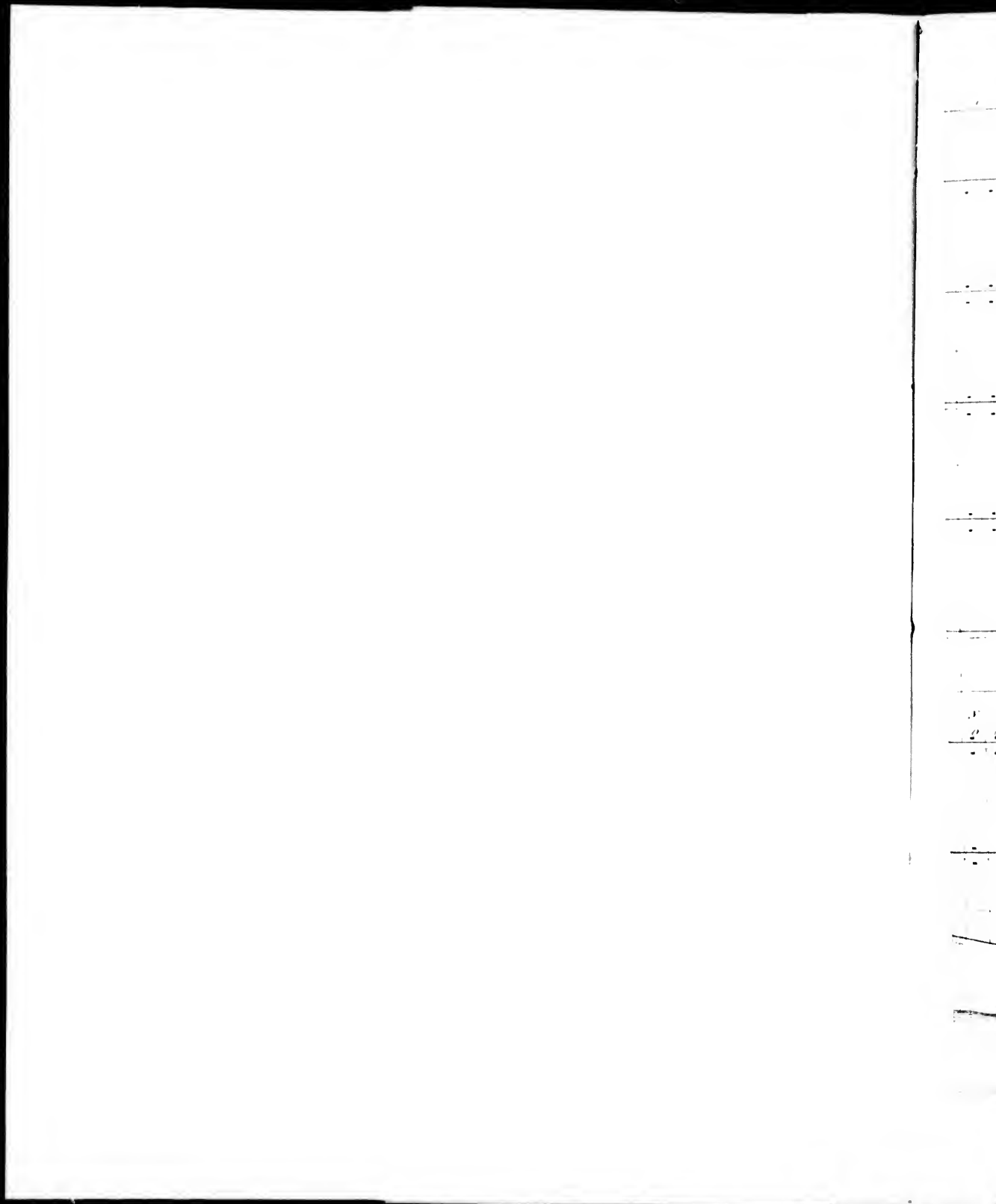
have  
ations  
e city  
oacity

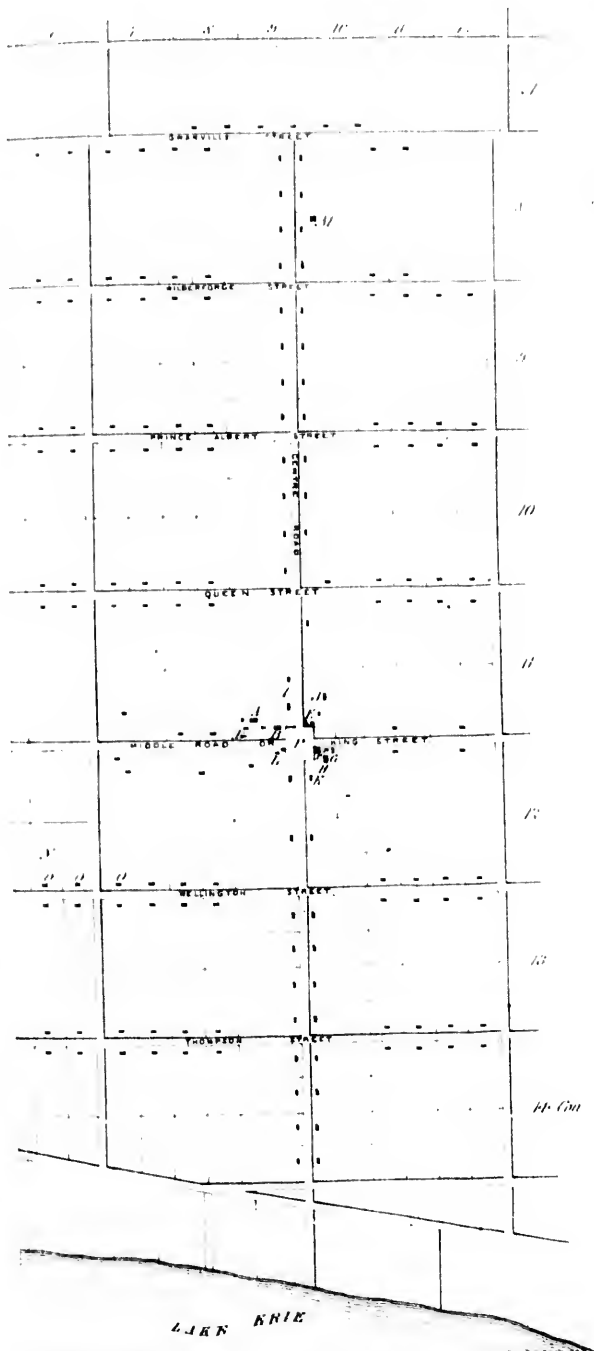
CLAY,

om

g, or







### Note.

The Elgin Association was incorporated by Act of Parliament 10<sup>th</sup> August 1850, for the social and moral improvement of the colored Population of Canada.

The settlement is nearly 6 Miles long and 3 Miles wide containing about 200 Families embracing about 1000 Souls.

The land is divided into Farms of 50 acres each and the Houses built along the Concessions after a model 18 feet by 24 feet high, and set 50 feet from the land enclosed in front with a picket fence.

For further information see Annual Report of the Elgin Association.

## PLAN OF THE ELGIN SETTLEMENT IN THE TOWNSHIP OF RALEIGH, COUNTY OF KENT, CANADA WEST.

ELGIN SETTLEMENT in the Township of Raleigh County of Kent Canada West, founded by the REV<sup>d</sup> WILLIAM KING, the Clayton of M<sup>rs</sup> Stoves "DRED." See Chapter 56

### References.

- |   |                             |
|---|-----------------------------|
| A. Rev <sup>d</sup> W <sup>m</sup> King's House | I. Brick Yard               |
| B. Mass. ch. Church.                            | J. Steam Saw and Grist Mill |
| C. Barren Post Office                           | K. Carpenter's Shop         |
| D. Mass. School                                 | L. Store Shop               |
| E. Store  |                             |
| F. Tavern                                       |                             |
| G. Barren                                       |                             |
| H. Barren                                       |                             |

