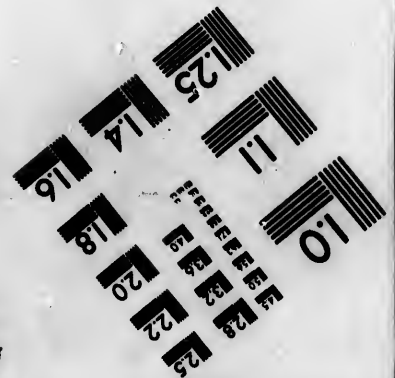
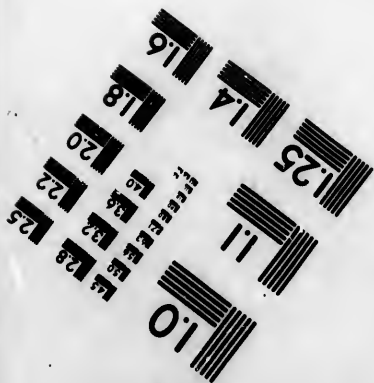
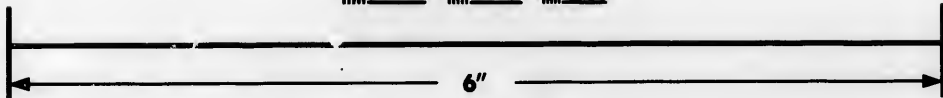
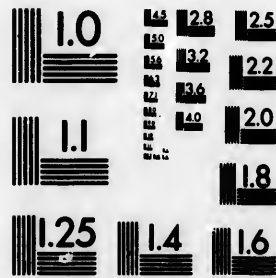


**IMAGE EVALUATION  
TEST TARGET (MT-3)**



**Photographic  
Sciences  
Corporation**

23 WEST MAIN STREET  
WEBSTER, N.Y. 14590  
(716) 872-4503

**CIHM/ICMH  
Microfiche  
Series.**

**CIHM/ICMH  
Collection de  
microfiches.**



**Canadian Institute for Historical Microreproductions / Institut canadien de microreproductions historiques**

**© 1983**

Technical and Bibliographic Notes/Notes techniques et bibliographiques

The Institute has attempted to obtain the best original copy available for filming. Features of this copy which may be bibliographically unique, which may alter any of the images in the reproduction, or which may significantly change the usual method of filming, are checked below.

L'institut a microfilmé le meilleur exemplaire qu'il lui a été possible de se procurer. Les détails de cet exemplaire qui sont peut-être uniques du point de vue bibliographique, qui peuvent modifier une image reproduite, ou qui peuvent exiger une modification dans la méthode normale de filmage sont indiqués ci-dessous.

- Coloured covers/  
Couverture de couleur
- Covers damaged/  
Couverture endommagée
- Covers restored and/or laminated/  
Couverture restaurée et/ou pelliculée
- Cover title missing/  
Le titre de couverture manque
- Coloured maps/  
Cartes géographiques en couleur
- Coloured ink (i.e. other than blue or black)/  
Encre de couleur (i.e. autre que bleue ou noire)
- Coloured plates and/or illustrations/  
Planches et/ou illustrations en couleur
- Bound with other material/  
Relié avec d'autres documents
- Tight binding may cause shadows or distortion along interior margin/  
La reliure serrée peut causer de l'ombre ou de la distortion le long de la marge intérieure
- Blank leaves added during restoration may appear within the text. Whenever possible, these have been omitted from filming/  
Il se peut que certaines pages blanches ajoutées lors d'une restauration apparaissent dans le texte, mais, lorsque cela était possible, ces pages n'ont pas été filmées.
- Additional comments:  
Commentaires supplémentaires:

- Coloured pages/  
Pages de couleur
- Pages damaged/  
Pages endommagées
- Pages restored and/or laminated/  
Pages restaurées et/ou pelliculées
- Pages discoloured, stained or foxed/  
Pages décolorées, tachetées ou piquées
- Pages detached/  
Pages détachées
- Showthrough/  
Transparence
- Quality of print varies/  
Qualité inégale de l'impression
- Includes supplementary material/  
Comprend du matériel supplémentaire
- Only edition available/  
Seule édition disponible
- Pages wholly or partially obscured by errata slips, tissues, etc., have been refilmed to ensure the best possible image/  
Les pages totalement ou partiellement obscurcies par un feuillet d'errata, une pelure, etc., ont été filmées à nouveau de façon à obtenir la meilleure image possible.

This item is filmed at the reduction ratio checked below/  
Ce document est filmé au taux de réduction indiqué ci-dessous.

10X	14X	18X	22X	26X	30X
<input type="checkbox"/>	<input type="checkbox"/>	<input type="checkbox"/>	<input type="checkbox"/>	<input checked="" type="checkbox"/>	<input type="checkbox"/>
12X	16X	20X	24X	28X	32X

The copy filmed here has been reproduced thanks to the generosity of:

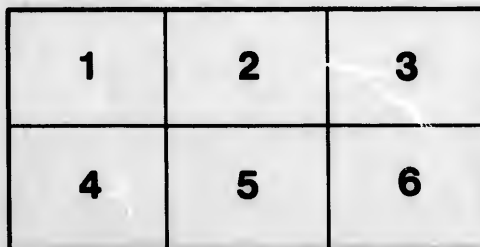
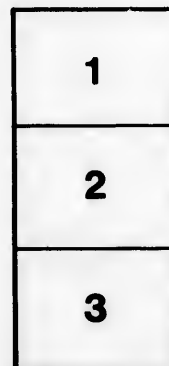
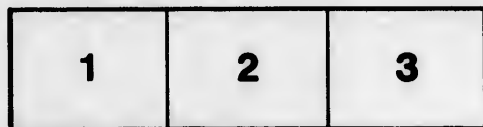
National Library of Canada

The images appearing here are the best quality possible considering the condition and legibility of the original copy and in keeping with the filming contract specifications.

Original copies in printed paper covers are filmed beginning with the front cover and ending on the last page with a printed or illustrated impression, or the back cover when appropriate. All other original copies are filmed beginning on the first page with a printed or illustrated impression, and ending on the last page with a printed or illustrated impression.

The last recorded frame on each microfiche shall contain the symbol  $\rightarrow$  (meaning "CONTINUED"), or the symbol  $\nabla$  (meaning "END"), whichever applies.

Maps, plates, charts, etc., may be filmed at different reduction ratios. Those too large to be entirely included in one exposure are filmed beginning in the upper left hand corner, left to right and top to bottom, as many frames as required. The following diagrams illustrate the method:



L'exemplaire filmé fut reproduit grâce à la générosité de:

Bibliothèque nationale du Canada

Les images suivantes ont été reproduites avec le plus grand soin, compte tenu de la condition et de la netteté de l'exemplaire filmé, et en conformité avec les conditions du contrat de filmage.

Les exemplaires originaux dont la couverture en papier est imprimée sont filmés en commençant par le premier plat et en terminant soit par la dernière page qui comporte une empreinte d'impression ou d'illustration, soit par le second plat, selon le cas. Tous les autres exemplaires originaux sont filmés en commençant par la première page qui comporte une empreinte d'impression ou d'illustration et en terminant par la dernière page qui comporte une telle empreinte.

Un des symboles suivants apparaîtra sur la dernière image de chaque microfiche, selon le cas: le symbole  $\rightarrow$  signifie "A SUIVRE", le symbole  $\nabla$  signifie "FIN".

Les cartes, planches, tableaux, etc., peuvent être filmés à des taux de réduction différents. Lorsque le document est trop grand pour être reproduit en un seul cliché, il est filmé à partir de l'angle supérieur gauche, de gauche à droite, et de haut en bas, en prenant le nombre d'images nécessaire. Les diagrammes suivants illustrent la méthode.

THE  
**S P E E C H**  
OF  
HIS ROYAL HIGHNESS  
**THE PRINCE OF WALES,**  
REGENT,  
IN THE NAME AND ON BEHALF OF  
**HIS MAJESTY,**  
TO BOTH HOUSES OF  
**PARLIAMENT,**

*On Tuesday, November 8, 1814.*



L O N D O N :

Printed by **GEORGE EYRE** and **ANDREW STRAHAN,**  
Printers to the King's most Excellent Majesty. 1814.

THE [illegible] OF [illegible]

[illegible]

[illegible]

[illegible]

[illegible]

[illegible]

[illegible]

[illegible]

[illegible]

[illegible]

[illegible]

[illegible]



THE  
**SPEECH**  
OF  
HIS ROYAL HIGHNESS  
THE PRINCE OF WALES, REGENT,  
IN THE NAME AND ON BEHALF OF  
HIS MAJESTY.

---

*My Lords, and Gentlemen,*

**I**T is with deep Regret that I am again obliged to announce the Continuance of His Majesty's lamented Indisposition.

It would have given Me great Satisfaction to have been enabled to communicate to you the Termination of the War between this Country and the United States of *America*.

**ALTHOUGH** this War originated in the most unprovoked Aggression on the Part of the Government of the United States, and was calculated to promote the Designs of the common Enemy of *Europe* against the Rights and Independence of all other Nations, I never have ceased to entertain a sincere Desire to bring it to a Conclusion on just and honourable Terms.

I AM still engaged in Negotiations for this Purpose ; the Success of them must, however, depend on My Disposition being met with corresponding Sentiments on the Part of the Enemy.

**THE** Operations of His Majesty's Forces by Sea and Land in the *Chesapeake* in the course of the present Year have been attended with the most brilliant and successful Results.

**THE** Flotilla of the Enemy in the *Patuxent* has been destroyed. The signal Defeat of their Land Forces enabled a Detachment of His Majesty's Army to take Possession of the City of *Washington* ; and the Spirit of Enterprize which has characterized all the Movements in that Quarter has produced on the Inhabitants a deep and sensible Impression of the Calamities of a War in which they have been so wantonly involved.

**THE** Expedition directed from *Halifax* to the Northern Coast of the United States has terminated in a Manner not less satisfactory. The successful Course of this Operation has been followed by the immediate Submission of the extensive and important District, East of the *Penobscot* River, to His Majesty's Arms.

( 4 )

IN adverting to these Events, I am confident you will be disposed to render full Justice to the Valour and Discipline which have distinguished His Majesty's Land and Sea Forces; and you will regret with Me the severe Loss the Country has sustained by the Fall of the gallant Commander of His Majesty's Troops in the Advance upon *Baltimore*.

I AVAILED Myself of the earliest Opportunity afforded by the State of Affairs in *Europe*, to detach a considerable Military Force to the River *Saint Lawrence*; but its Arrival could not possibly take place till an advanced Period of the Campaign.

NOTWITHSTANDING the Reverse which appears to have occurred on Lake *Champlain*, I entertain the most confident Expectation, as well from the Amount as from the Description of the *British* Force now serving in *Canada*, that the Ascendancy of His Majesty's Arms throughout that Part of *North America* will be effectually established.

THE Opening of the Congress at *Vienna* has been retarded, from unavoidable Causes, to a later Period than had been expected.

It will be My earnest Endeavour, in the Negotiations which are now in Progress, to promote such Arrangements as may tend to consolidate that Peace which, in Conjunction with His Majesty's Allies, I have had the Happiness of concluding; and to re-establish that just Equilibrium amongst the different Powers, which will afford the best Prospect of permanent Tranquillity to *Europe*.

*Gentlemen of the House of Commons,*

I HAVE directed the Estimates for the ensuing Year to be laid before you.

I AM happy to be able to inform you that the Revenue and Commerce of the United Kingdom are in the most flourishing Condition.

I REGRET the Necessity of the large Expenditure which We must be prepared to meet in the Course of the ensuing Year; but the Circumstances under which the long and arduous Contest in *Europe* has been carried on and concluded, have unavoidably led to large Arrears, for which you will see the Necessity of providing; and the War still subsisting with *America* renders the Continuance of great Exertions indispensable.

*My Lords, and Gentlemen,*

THE peculiar Character of the late War, as well as the extraordinary Length of its Duration, must have materially affected the internal Situation of all the Countries engaged in it, as well as the Commercial Relations which formerly subsisted between them.

UNDER these Circumstances I am confident you will see the Expediency of proceeding with due Caution in the Adoption of such Regulations as may be necessary for the Purpose of extending Our Trade, and securing Our present Advantages; and you may rely on My cordial Co-operation and Assistance in every Measure which is calculated to contribute to the Prosperity and Welfare of His Majesty's Dominions.

F I N I S.



