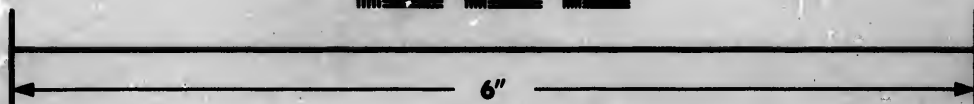
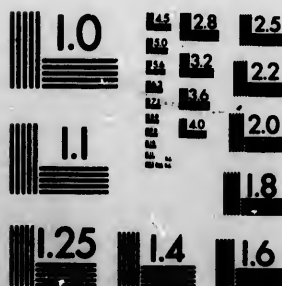


**IMAGE EVALUATION
TEST TARGET (MT-3)**



**Photographic
Sciences
Corporation**

23 WEST MAIN STREET
WEBSTER, N.Y. 14580
(716) 873-4900

**CIHM/ICMH
Microfiche
Series.**

**CIHM/ICMH
Collection de
microfiches.**



Canadian Institute for Historical Microreproductions / Institut canadien de microreproductions historiques

© 1983

Technical and Bibliographic Notes/Notes techniques et bibliographiques

The Institute has attempted to obtain the best original copy available for filming. Features of this copy which may be bibliographically unique, which may alter any of the images in the reproduction, or which may significantly change the usual method of filming, are checked below.

L'institut a microfilmé le meilleur exemplaire qu'il lui a été possible de se procurer. Les détails de cet exemplaire qui sont peut-être uniques du point de vue bibliographique, qui peuvent modifier une image reproduite, ou qui peuvent exiger une modification dans la méthode normale de filmage sont indiqués ci-dessous.

- Coloured covers/
Couverture de couleur
- Covers damaged/
Couverture endommagée
- Covers restored and/or laminated/
Couverture restaurée et/ou pelliculée
- Cover title missing/
Le titre de couverture manque
- Coloured maps/
Cartes géographiques en couleur
- Coloured ink (i.e. other than blue or black)/
Encre de couleur (i.e. autre que bleue ou noire)
- Coloured plates and/or illustrations/
Planches et/ou illustrations en couleur
- Bound with other material/
Relié avec d'autres documents
- Tight binding may cause shadows or distortion
along interior margin/
La reliure serrée peut causer de l'ombre ou de la
distortion le long de la marge intérieure
- Blank leaves added during restoration may
appear within the text. Whenever possible, these
have been omitted from filming/
Il se peut que certaines pages blanches ajoutées
lors d'une restauration apparaissent dans le texte,
mais, lorsque cela était possible, ces pages n'ont
pas été filmées.
- Additional comments:/
Commentaires supplémentaires:

- Coloured pages/
Pages de couleur
- Pages damaged/
Pages endommagées
- Pages restored and/or laminated/
Pages restaurées et/ou pelliculées
- Pages discoloured, stained or foxed/
Pages décolorées, tachetées ou piquées
- Pages detached/
Pages détachées
- Showthrough/
Transparence
- Quality of print varies/
Qualité inégale de l'impression
- Includes supplementary material/
Comprend du matériel supplémentaire
- Only edition available/
Seule édition disponible
- Pages wholly or partially obscured by errata
slips, tissues, etc., have been refiled to
ensure the best possible image/
Les pages totalement ou partiellement
obscurcies par un feuillet d'errata, une pelure,
etc., ont été filmées à nouveau de façon à
obtenir la meilleure image possible.

This item is filmed at the reduction ratio checked below/
Ce document est filmé au taux de réduction indiqué ci-dessous.

10X	12X	14X	16X	18X	20X	22X	24X	26X	28X	30X	32X
<input type="checkbox"/>	<input type="checkbox"/>	<input type="checkbox"/>	<input type="checkbox"/>	<input type="checkbox"/>	<input type="checkbox"/>	<input type="checkbox"/>	<input checked="" type="checkbox"/>	<input type="checkbox"/>	<input type="checkbox"/>	<input type="checkbox"/>	<input type="checkbox"/>

The copy filmed here has been reproduced thanks to the generosity of:

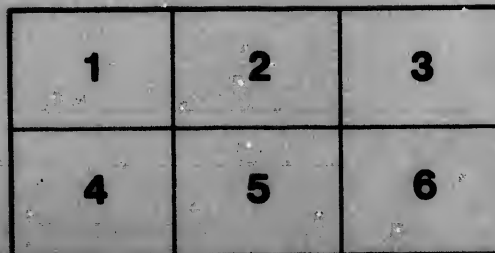
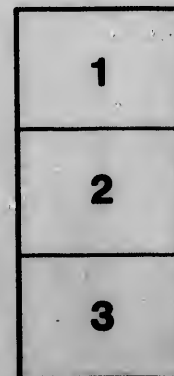
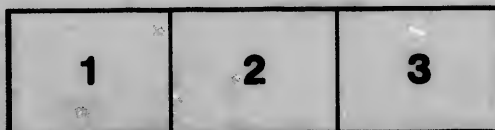
Library of Congress
Photoduplication Service

The images appearing here are the best quality possible considering the condition and legibility of the original copy and in keeping with the filming contract specifications.

Original copies in printed paper covers are filmed beginning with the front cover and ending on the last page with a printed or illustrated impression, or the back cover when appropriate. All other original copies are filmed beginning on the first page with a printed or illustrated impression, and ending on the last page with a printed or illustrated impression.

The last recorded frame on each microfiche shall contain the symbol \rightarrow (meaning "CONTINUED"), or the symbol ∇ (meaning "END"), whichever applies.

Maps, plates, charts, etc., may be filmed at different reduction ratios. Those too large to be entirely included in one exposure are filmed beginning in the upper left hand corner, left to right and top to bottom, as many frames as required. The following diagrams illustrate the method:



L'exemplaire filmé fut reproduit grâce à la générosité de:

Library of Congress
Photoduplication Service

Les images suivantes ont été reproduites avec le plus grand soin, compte tenu de la condition et de la netteté de l'exemplaire filmé, et en conformité avec les conditions du contrat de filmage.

Les exemplaires originaux dont la couverture en papier est imprimée sont filmés en commençant par le premier plat et en terminant soit par la dernière page qui comporte une empreinte d'impression ou d'illustration, soit par le second plat, selon le cas. Tous les autres exemplaires originaux sont filmés en commençant par la première page qui comporte une empreinte d'impression ou d'illustration et en terminant par la dernière page qui comporte une telle empreinte.

Un des symboles suivants apparaîtra sur la dernière image de chaque microfiche, selon le cas: le symbole \rightarrow signifie "A SUIVRE", le symbole ∇ signifie "FIN".

Les cartes, planches, tableaux, etc., peuvent être filmés à des taux de réduction différents. Lorsque le document est trop grand pour être reproduit en un seul cliché, il est filmé à partir de l'angle supérieur gauche, de gauche à droite, et de haut en bas, en prenant le nombre d'images nécessaire. Les diagrammes suivants illustrent la méthode.

e
étails
s du
modifier
r une
l'image

errata
l to
t
e pelure,
on à

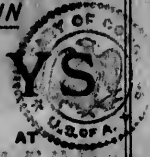
32X

24
c

F127
N8N43
copy 2

WHAT CAN I SEE AND HOW MUCH
WILL IT COST ME, IN

TWO DAYS



Niagara Falls?

The only line from
the East that can
take you over its
own rails in sight of
ALL the Magnificent
Views at and near
the Great Cataract
in the

NEW YORK CENTRAL

Hudson River Railroad.

THE GREAT 4 TRACK TRUNK LINE

JOHN E. TOUCHEY, General Superintendent. GEORGE H. BARKER, General Passenger Agent.

Printed by H. H. H. Co., New York, for Public Use, N. Y.

7-27-28
1/3 copy 2

IN TWO DAYS

AT

**NIAGARA
FALLS**

you can get quite an idea of its wonderful beauties, but to do the subject anything like justice,

TWO WEEKS

should be spent there, and you would find that every day you would discover new objects of interest.

Every American who can do so, should visit this greatest of known cataracts, to view which, thousands come annually from distant lands, traveling half around the world to see what you may enjoy in half a day's journey.

Marcus Benjamin

DAYS

A

FALLS

of its wonderful
ect anything like

WEEKS

ou would find that
er new objects of

do so, should visit
cts, to view which,
om distant lands,
ld to see what you
rney.

FEES AT NIAGARA FALLS.

Goat Island —Including guide and suit to go through "Cave of the Winds".....	\$1 00
Prospect Park —Down and up in- clined railway (each way).....	10
Prospect Park —Round trip on "Maid of the Mist," including rubber suit....	50
New Bridge —Niagara Falls to Canada and return—each person (carriage, 25 cents).....	25
Museum —On Canada side near the Falls.....	50
Under Horseshoe Falls —Canada side—guide and suit.....	1 00
Burning Spring	50
Old Suspension Bridge —Over and return.....	25
Whirlpool Rapids and Park —In- clined railway, Canada side.....	50

Whirlpool Rapids and Park—Elevator American side.....	50
Whirlpool - Stairs, American side....	50
Whirlpool—Inclined railway, Canada side.....	50
Niagara Falls to Suspension Bridge—Street car, over old bridge in Whirlpool Rapids Park (Canada side), return same way.....	55
If each is paid separately.....	85
Niagara Falls to Suspension Bridge—Street car, walk to Battery's Whirlpool Rapids, elevator, return same way.....	40
If each is paid separately.....	60
Niagara Falls to Suspension Bridge—Street Car, transfer from Suspension Bridge to Old Whirlpool (American side) and return.....	55
If each is paid separately.....	85
Carriage Hire—Regular rate per hour	1 50
Carriage Hire—To take in all places of interest for party of four (4) or more in a carriage, each person.....	1 00

ark—Ele.	50
side....	50
, Canada	50
spension	55
old bridge	85
(Canada	
spension	
Battery's	40
or, return	60
spension	
ansfer from	
Whirlpool	55
	85
e per hour	1 50
all places	
(4) or more	1 00

THE HOTELS

— AT —

NIAGARA FALLS

are first-class, and their charges are reasonable; and no more interesting place can be found on this continent in which to spend a season of rest and recreation.

The constant flow of the pure water of Lake Erie over the great Falls keeps the air of Niagara pure, cool and healthful, and makes it one of the most desirable of all the American health and pleasure resorts.

THE NEW YORK CENTRAL

HUDSON RIVER RAILROAD

is the direct line from New York and the East, and with its four tracks, two for freight and two for passenger traffic, offers facilities for safe, rapid and luxurious transit to the world's grandest cataract that no other line can approach.

This is What it Will Cost You.

NIAGARA IS YOURS.

The State of New York and the Dominion Government having purchased the land on either side of the Falls and converted it into

TWO BEAUTIFUL FREE PARKS,

you can obtain all the most desirable views of the Falls without any extra expense whatever; and since the establishment by C. W. Miller & Co., of a regular omnibus and carriage transfer business at the Falls, the old "Hack" extortion has been practically abolished.

The small fees asked at different points of interest, considering the convenience and protection afforded, are just and reasonable. The appended list will show the ordinary charges:

Cost You.

YOURS.

and the Dominion
ed the land on
converted it into

PARKS,

desirable views of
expense whatever;
by C. W. Miller
and carriage trans-
d "Hack" extor-
ished.

different points of
venience and pro-
reasonable. The
ordinary charges:

*The "CHRISTIAN UNION" suggests
the following*

PROGRAMME,

And

This is What You Can See:

1st Morning.—Goat Island and Prospect Park on foot.

Afternoon.—Ride to Canada side, Dufferin Islands, and panoramic view from hill back of Clifton House.

2d Morning.—Excursion on observation train of New York Central and Hudson River Railroad to Lewiston, giving view of the Niagara Gorge, rapids and whirlpool below the Falls.

Afternoon.—Sail in "Maid of the Mist," giving a grand view of the Falls from below.

If a third day is taken one may visit the "Cave of the Winds" under the Falls, take a trip to Niagara-on-the-Lake, Brock's Monument, have a sail on the river from Lewiston to its mouth, and inspect the various museums and curiosity shops with which the place abounds.

OVER 40 TRAINS DAILY

Arrive at and Depart from

NIAGARA FALLS
OVER THE
NEW YORK CENTRAL

HUDSON RIVER RAILROAD.

THE GREAT 4 TRACK TRUNK LINE

BETWEEN THE

EAST AND THE WEST,

AND THE ONLY LINE HAVING A PASSENGER STATION
IN THE CITY OF NEW YORK.

For time tables, rates of fare, etc., call on
any agent of the New York Central & Hudson
River Railroad, or address:

M. C. BOACH, Gen'l Eastern Pass' Agent,
No. 428 Broadway, New York.

F. J. WOLFE, Gen'l Agent Family Dept.,
Albany Station, New York.

EDSON J. WEEKS, Gen'l Agent Family Dept.,
No. 1 Exchange Street, Buffalo, New York.

E. J. RICHARDS, **GEORGE H. BASIN,**
Asst. Gen'l Pass' Agent. Gen'l Family Agent.

Grand Central Station, New York.



