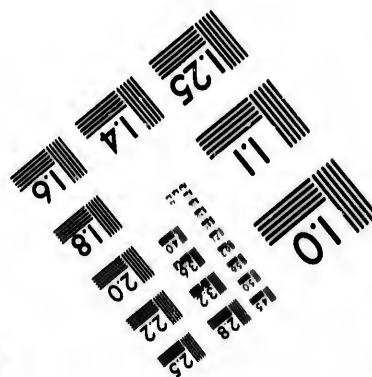
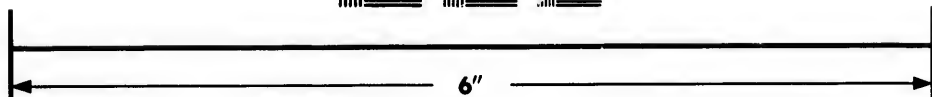
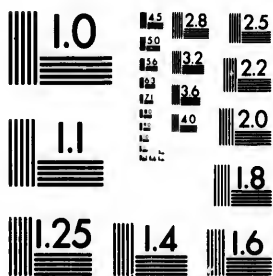


**IMAGE EVALUATION  
TEST TARGET (MT-3)**



**Photographic  
Sciences  
Corporation**

23 WEST MAIN STREET  
WEBSTER, N.Y. 14580  
(716) 872-4503

Canada

**CIHM/ICMH  
Microfiche  
Series.**

**CIHM/ICMH  
Collection de  
microfiches.**



Canadian Institute for Historical Microreproductions / Institut canadien de microreproductions historiques

**© 1985**

Technical and Bibliographic Notes/Notes techniques et bibliographiques

The Institute has attempted to obtain the best original copy available for filming. Features of this copy which may be bibliographically unique, which may alter any of the images in the reproduction, or which may significantly change the usual method of filming, are checked below.

L'Institut a microfilmé le meilleur exemplaire qu'il lui a été possible de se procurer. Les détails de cet exemplaire qui sont peut-être uniques du point de vue bibliographique, qui peuvent modifier une image reproduite, ou qui peuvent exiger une modification dans la méthode normale de filmage sont indiqués ci-dessous.

- Coloured covers/  
Couverture de couleur
- Covers damaged/  
Couverture endommagée
- Covers restored and/or laminated/  
Couverture restaurée et/ou pelliculée
- Cover title missing/  
Le titre de couverture manque
- Coloured maps/  
Cartes géographiques en couleur
- Coloured ink (i.e. other than blue or black)/  
Encre de couleur (i.e. autre que bleue ou noire)
- Coloured plates and/or illustrations/  
Planches et/ou illustrations en couleur
- Bound with other material/  
Relié avec d'autres documents
- Tight binding may cause shadows or distortion  
along interior margin/  
La reliure serrée peut causer de l'ombre ou de la  
distortion le long de la marge intérieure
- Blank leaves added during restoration may  
appear within the text. Whenever possible, these  
have been omitted from filming/  
Il se peut que certaines pages blanches ajoutées  
lors d'une restauration apparaissent dans le texte,  
mais, lorsque cela était possible, ces pages n'ont  
pas été filmées.
- Additional comments:/  
Commentaires supplémentaires:

- Coloured pages/  
Pages de couleur
- Pages damaged/  
Pages endommagées
- Pages restored and/or laminated/  
Pages restaurées et/ou pelliculées
- Pages discoloured, stained or foxed/  
Pages décolorées, tachetées ou piquées
- Pages detached/  
Pages détachées
- Showthrough/  
Transparence
- Quality of print varies/  
Qualité inégale de l'impression
- Includes supplementary material/  
Comprend du matériel supplémentaire
- Only edition available/  
Seule édition disponible
- Pages wholly or partially obscured by errata  
slips, tissues, etc., have been refilmed to  
ensure the best possible image/  
Les pages totalement ou partiellement  
obscurcies par un feuillet d'errata, une pelure,  
etc., ont été filmées à nouveau de façon à  
obtenir la meilleure image possible.

This item is filmed at the reduction ratio checked below/  
Ce document est filmé au taux de réduction indiqué ci-dessous.

|                          |                          |                          |                                     |                          |                          |
|--------------------------|--------------------------|--------------------------|-------------------------------------|--------------------------|--------------------------|
| 10X                      | 14X                      | 18X                      | 22X                                 | 26X                      | 30X                      |
| <input type="checkbox"/> | <input type="checkbox"/> | <input type="checkbox"/> | <input checked="" type="checkbox"/> | <input type="checkbox"/> | <input type="checkbox"/> |
| 12X                      | 16X                      | 20X                      | 24X                                 | 28X                      | 32X                      |

The copy to the g

The ima possible of the o filming

Original beginni the last sion, or other or first pag sion, an or illustr

The last shall co TINED whicher

Maps, p differen entirely beginni right an require method

The copy filmed here has been reproduced thanks to the generosity of:

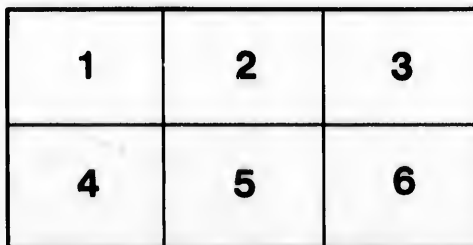
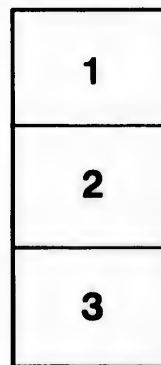
Metropolitan Toronto Library  
Science & Technology Department

The images appearing here are the best quality possible considering the condition and legibility of the original copy and in keeping with the filming contract specifications.

Original copies in printed paper covers are filmed beginning with the front cover and ending on the last page with a printed or illustrated impression, or the back cover when appropriate. All other original copies are filmed beginning on the first page with a printed or illustrated impression, and ending on the last page with a printed or illustrated impression.

The last recorded frame on each microfiche shall contain the symbol  $\rightarrow$  (meaning "CONTINUED"), or the symbol  $\nabla$  (meaning "END"), whichever applies.

Maps, plates, charts, etc., may be filmed at different reduction ratios. Those too large to be entirely included in one exposure are filmed beginning in the upper left hand corner, left to right and top to bottom, as many frames as required. The following diagrams illustrate the method:



L'exemplaire filmé fut reproduit grâce à la générosité de:

Metropolitan Toronto Library  
Science & Technology Department

Les images suivantes ont été reproduites avec le plus grand soin, compte tenu de la condition et de la netteté de l'exemplaire filmé, et en conformité avec les conditions du contrat de filmage.

Les exemplaires originaux dont la couverture en papier est imprimée sont filmés en commençant par le premier plat et en terminant soit par la dernière page qui comporte une empreinte d'impression ou d'illustration, soit par le second plat, selon le cas. Tous les autres exemplaires originaux sont filmés en commençant par la première page qui comporte une empreinte d'impression ou d'illustration et en terminant par la dernière page qui comporte une telle empreinte.

Un des symboles suivants apparaîtra sur la dernière image de chaque microfiche, selon le cas: le symbole  $\rightarrow$  signifie "A SUIVRE", le symbole  $\nabla$  signifie "FIN".

Les cartes, planches, tableaux, etc., peuvent être filmés à des taux de réduction différents. Lorsque le document est trop grand pour être reproduit en un seul cliché, il est filmé à partir de l'angle supérieur gauche, de gauche à droite, et de haut en bas, en prenant le nombre d'images nécessaire. Les diagrammes suivants illustrent la méthode.

ire  
détails  
es du  
modifier  
er une  
filmage

es

e

errata  
d to  
t  
a pelure,  
on à



32X

N

A

923

CHECK LIST

OF

NORTH AMERICAN BIRDS.

---

By

ELLIOTT COUES.

---

SALEM, MASS.  
F. W. PUTNAM & Co.  
1879.

15.7/4

Printed at the SALEM PRESS,

of  
Liberty & Derby Sts., Salem.

N  
Stra  
of ti  
is o  
merc  
inter  
origi  
the r  
form  
in th  
nally  
reduc  
latter  
Th  
was  
arran  
gener  
order  
Au  
prop  
may  
doub  
being  
to m  
is ne  
to do  
The  
Th  
ring  
Att.,  
part  
Gme  
Law  
enbr  
son  
Vig

## CHECK LIST OF NORTH AMERICAN BIRDS.

---

NOTE.—The species are numbered consecutively from 1 to 635. Stragglers have the number in brackets. Varieties bear the number of the species to which they belong, with *a*, *b*, *c*, etc., unless a variety is our only representative of the species, when it is separately enumerated. Obscure or doubtful species are marked with a note of interrogation after the number. Each species is followed by the original describer's name; when this is not also the authority for the nomenclature adopted the name of such authority is added, the former being retained in parenthesis. A similar practice is observed in the cases of varieties; when, as in most instances, they were originally described as species they are followed by the authority for their reduction to varieties, as well as by the name of the describer; the latter in parenthesis.

The List contains a very few species discovered since the "Key" was printed; otherwise, it is an exact reflection of that work, the arrangement and nomenclature being identical. The numbers of the genera as used in the Key are given in the head lines of the List in order to facilitate reference.

Authors are at variance in the formation of the genitive of Latinized proper names; in the absence of any universally observed rule, euphony may perhaps be advantageously consulted. In the Key, the *i* was doubled in all cases of words ending in a consonant, the nominative being considered to end in *-ius*; this practice is preferably applicable to monosyllables, as *Bairdii*, and polysyllables, as *Audubonii*. But it is necessary to use single *i* in words ending in *r*, as *Cooperi*, and best to do so in most cases of dissyllables, as *Wilsoni*, *Cassini*, *Swainsoni*. The same is the case with all words ending in a vowel.

The following are the abbreviations used for authors' names occurring most frequently; others are for the most part written in full:—*All.*, Allen; *Aud.*, Audubon; *Bd.*, Baird; *Bodd.*, Boddaert; *Bp.*, Bonaparte; *Cab.*, Cabanis; *Cass.*, Cassin; *Cs.*, Coues; *Gamb.*, Gambel; *Gm.*, Gmelin; *Gr.*, Gray; *L.*, Linnaeus; *Lafr.*, Lafresnaye; *Lath.*, Latham; *Lawr.*, Lawrence; *Licht.*, Lichtenstein; *Nutt.*, Nuttall; *Reich.*, Reichenbach; *Ridg.*, Ridgway; *Scl.*, Sclater; *Steph.*, Stephens; *Sw.*, Swainson; *Temm.*, Temminck; *Towns.*, Townsend; *V.*, Vieillot; *Vig.*, Vigors; *Wagl.*, Wagler; *Wils.*, Wilson.



1.

1a.

2.

3.

4.

4a.

4b.

5.

5a.

5b.

6.

7.

8.

1. **TURDUS MIGRATORIUS L.**  
**Robin.**
- 1a. **TURDUS MIGRATORIUS L.,**  
*var. CONFINIS (Bd.) Cs.*  
**St. Lucas Robin.**
2. **TURDUS NÆVIUS Gm.**  
**Varied Thrush.**
3. **TURDUS MUSTELINUS Gm.**  
**Wood Thrush.**
4. **TURDUS PALLASI Cab.**  
**Hermit Thrush.**
- 4a. **TURDUS PALLASI Cab.,**  
*var. AUDUBONII (Bd.) Cs.*  
**Audubon's Thrush.**
- 4b. **TURDUS PALLASI Cab.,**  
*var. NANUS (Aud.) Cs.*  
**Dwarf Thrush.**
5. **TURDUS SWAINSONI Cab.**  
**Olive-backed Thrush.**
- 5a. **TURDUS SWAINSONI Cab.,**  
*var. ALICE (Bd.) Cs.*  
**Alice's Thrush.**
- 5b. **TURDUS SWAINSONI Cab.,**  
*var. USTULATUS (Nutt.) Cs.*  
**Oregon Thrush.**
6. **TURDUS FUSCESCENS STEPH.**  
**Wilson's Thrush. Veery.**
7. **OREOSOPTES MONTANUS (TOWNS.) Bd.**  
**Mountain Mockingbird.**
8. **MIMUS POLYGLOTTUS (L.) BOIE.**  
**Mockingbird.**

9.

10.

10a.

11.

11b.

12.

13.

13a.

14.

[15

16.

17.

18.

---

9. **MIMUS CAROLINENSIS** (L.) GR.  
**Catbird.**
10. **HARPORHYNCHUS RUFUS** (L.) CAB.  
**Brown Thrush. Thrasher.**
- 10a. **HARPORHYNCHUS RUFUS** (L.) CAB.,  
*var. LONGIROSTRIS* (Lafr.) Cs.  
**Long-billed Thrush.**
11. **HARPORHYNCHUS CURVIROSTRIS** (SW.) CAB.,  
*var. PALMERI* Ridg.  
**Curve-billed Thrush.**
- 11bis.\* **HARPORHYNCHUS BENDIREI** Cs.  
**Bendire's Thrush.**
12. **HARPORHYNCHUS CINEREUS** BD.  
**Cinereous Thrush.**
13. **HARPORHYNCHUS REDIVIVUS** (GAMB.) CAB.  
**Sickle-billed Thrush.**
- 13a. **HARPORHYNCHUS REDIVIVUS** (GAMB.) CAB.,  
*var. LECONTEI* (Lawr.) Cs.  
**LeConte's Thrush.**
14. **HARPORHYNCHUS CRISSALIS** HENRY.  
**Red-vented Thrush.**
- [15]. **SAXICOLA GENANTHE** (L.) BECHSTEIN.  
**Stone Chat. Wheat-ear.**
16. **SIALIA SIALIS** (L.) HALDEMAN.  
**Eastern Bluebird.**
17. **SIALIA MEXICANA** SW.  
**Western Bluebird.**
18. **SIALIA ARCTICA** SW.  
**Arctic Bluebird.**

---

\*11bis. Not in the Key. See Am. Nat., Vol. vii, p. 330, 1873.

19. C

[20].

21. R

22. R  
G

23. P

24. P  
H

25. P  
R

26. C  
Fas

27. I

28. I

29. I

30. I

31. I  
H

31a.

19. *CINCLUS MEXICANUS* Sw.  
**Water Ouzel. Dipper.**
- [20]. *PHYLLOPNEUSTE BOREALIS* BLASTUS.  
**Kennicott's Sylvia.**
21. *REGULUS CALENDULA* (L.) LICHT.  
**Ruby-crowned Kinglet.**
22. *REGULUS SATRAPA* LICHT.  
**Golden-crested Kinglet.**
23. *POLIOPTILA CÆRULEA* (L.) SCL.  
**Blue-gray Gnatcatcher.**
24. *POLIOPTILA MELANURA* LAWR.  
**Black-headed Gnatcatcher.**
25. *POLIOPTILA PLUMBEA* Bd.  
**Plumbeous Gnatcatcher.**
26. *CHAMÆA FASCIATA* GAMB.  
**Fasciated Tit. Ground Wren.**
27. *LOPHOPHANES BICOLOR* (L.) Bp.  
**Tufted Titmouse.**
28. *LOPHOPHANES INORNATUS* (GAMB.) CASS.  
**Plain Titmouse.**
29. *LOPHOPHANES ATRICRISTATUS* CASS.  
**Black-crested Titmouse.**
30. *LOPHOPHANES WOLLWEBERI* Bp.  
**Bridled Titmouse.**
31. *PARUS ATRICAPILLUS* L.  
**Black-capped Chickadee.**
- 31a. *PARUS ATRICAPILLUS* L.,  
*var. SEPTENTRIONALIS* (Harris) All.  
**Long-tailed Chickadee.**

31b. I

31c. I

32. P

33. P

34. E

**Che**

35. E

36. E

37. A

38. S

38a.

39. S

40. S

**Bro**

41?

42. C

- 31b. **PARUS ATRICAPILLUS L.**,  
*var. CAROLINENSIS* (Aud.) Cs.  
**Carolina Chickadee.**
- 31c. **PARUS ATRICAPILLUS L.**,  
*var. OCCIDENTALIS* (Bd.) Cs.  
**Western Chickadee.**
32. **PARUS MONTANUS GAMB.**  
**Mountain Chickadee.**
33. **PARUS HUDSONICUS FORSTER.**  
**Hudsonian Chickadee.**
34. **PARUS RUFESCENS TOWNS.**  
**Chestnut-backed Chickadee.**
35. **PSALTRIPARUS MINIMUS (TOWNS.) BP.**  
**Least Titmouse.**
36. **PSALTRIPARUS PLUMBEUS BD.**  
**Plumbeous Titmouse.**
37. **AURIPARUS FLAVICEPS (SUND.) BD.**  
**Yellow-headed Titmouse.**
38. **SITTA CAROLINENSIS GM.**  
**White-bellied Nuthatch.**
- 38a. **SITTA CAROLINENSIS GM.**,  
*var. ACULFATA* (Cass.) All.  
**Slender-billed Nuthatch.**
39. **SITTA CANADENSIS L.**  
**Red-bellied Nuthatch.**
40. **SITTA PUSILLA LATH.**  
**Brown-headed Nuthatch.**
- 41? **SITTA PYGMÆA VIG.**  
**Pygmy Nuthatch.**
42. **CERTHIA FAMILIARIS L.**  
**Brown Creeper.**



43. CA

44. CA

45. SA

46. CA

47. TE

47a. T

48. TE

48a. T

48b. T

49. TE

49a. T

50. AL

43. **CAMPYLORHYNCHUS**  
**BRUNNEICAPILLUS** (LAFR.) GR.  
**Brown-headed Creeper-wren.**
44. **CAMPYLORHYNCHUS AFFINIS** XANTUS.  
**Allied Creeper-wren.**
45. **SALPINCTES OBSOLETUS** (SAY) CAB.  
**Rock Wren.**
46. **CATHERPES MEXICANUS** (SW.) BD.  
**White-throated Wren.**
47. **THRYOTHORUS LUDOVICIANUS** (GM.) BP.  
**Great Carolina Wren.**
- 47a. **THRYOTHORUS LUDOVICIANUS** (GM.) BP.,  
*var. BERLANDIERI* (Couch) Cs.  
**Berlandier's Wren.**
48. **THRYOTHORUS BEWICKII** (AUD.) BP.  
**Bewick's Wren.**
- 48a. **THRYOTHORUS BEWICKII** (AUD.) BP.  
*var. LEUCOGASTER* (Gould) Bd.  
**White-bellied Wren.**
- 48b. **THRYOTHORUS BEWICKII** (AUD.) BP.,  
*var. SPILURUS* (Vlg.) Bd.  
**Speckled-tailed Wren.**
49. **TROGLODYTES AEDON** V.  
**House Wren.**
- 49a. **TROGLODYTES AEDON** V.,  
*var. PARKMANNI* (Aud.) Cs.  
**Western House Wren.**
50. **ANORTHURA TROGLODYTES** (L.) CS.,  
*var. HYEMALIS* (Wils.) Cs.  
**Winter Wren.**

50a. AL

51. TE

52. CI

53. ER

53a. EL

54. BU

55. AN

56. NE

57. MN

**Blac**

58. PA

**Bluc**

59. PR

60. HE

61. HE

62. HE

**IB**

- 50a. *ANORTHURA TROGLODYTES* (L.) Cs.,  
*var. ALASCENSIS* (Bd.) Cs.  
**Alaskan Wren.**
51. *TELMATODYTES PALUSTRIS* (WILS.) CAB.  
**Long-billed Marsh Wren.**
52. *CISTOTHORUS STELLARIS* (LICHT.) CAB.  
**Short-billed Marsh Wren.**
53. *EREMOPHILA ALPESTRIS* (FORST.) BOIE.  
**Horned Lark; Shore Lark.**
- 53a. *EREMOPHILA ALPESTRIS* (FORST.) BOIE,  
*var. CHRYSOLEMA* (Wagl.) Bd.  
**South-western Lark.**
54. *BUDYTES FLAVA* (L.) CUV.  
**Yellow Wagtail.**
55. *ANTHUS LUT. OVICIANUS* (GM.) LICHT.  
**Brown Lark; Titlark; Pipit.**
56. *NEOCORYS SPRAGUEI* (AUD.) SCL.  
**Missouri Skylark.**
57. *MNIOTILTA VARIA* (L.) V.  
**Black-and-white Creeper.**
58. *PARULA AMERICANA* (L.) BP.  
**Blue yellow-backed Warbler.**
59. *PROTONOTARIA CITRÆA* (BODD.) BD.  
**Prothonotary Warbler.**
60. *HELMITHERUS VERMIVORUS* (GM.) BP.  
**Worm-eating Warbler.**
61. *HELMITHERUS SWAINSONI* (AUD.) BP.  
**Swainson's Warbler.**
62. *HELMINTHOPHAGA PINUS* (L.) BD.  
**Blue-winged Yellow Warbler.**

63. E

64. E

65. E

66. E

67. E

68. E

69. E

70. I

71. I

**Black**

72. I

73. I

74. I

75. I

76. I

77. I

or

63. *HELMINTHOPHAGA CHRYSOPTERA* (L.) BD.  
**Blue Golden-winged Warbler.**
64. *HELMINTHOPHAGA BACHMANI* (AUD.) CAB.  
**Bachman's Warbler.**
65. *HELMINTHOPHAGA LUCIÆ* COOP.  
**Lucy's Warbler.**
66. *HELMINTHOPHAGA VIRGINIÆ* BD.  
**Virginia's Warbler.**
67. *HELMINTHOPHAGA RUFICAPILLA* (WILS.) PD.  
**Nashville Warbler.**
68. *HELMINTHOPHAGA CELATA* (SAY) BD.  
**Orange-crowned Warbler.**
69. *HELMINTHOPHAGA PEREGRINA* (WILS.) CAB.  
**Tennessee Warbler.**
70. *DENDRÆCA ÆSTIVA* (GM.) BD.  
**Summer Warbler.**
71. *DENDRÆCA VIRENS* (GM.) BD.  
**Black-throated Green Warbler.**
72. *DENDRÆCA OCCIDENTALIS* (TOWNS.) BD.  
**Western Warbler.**
73. *DENDRÆCA TOWNSENDII* (NUTT.) BD.  
**Townsend's Warbler.**
74. *DENDRÆCA CHRYSOPAREIA* SCL. ET SALV.  
**Golden-cheeked Warbler.**
75. *DENDRÆCA NIGRESCENS* (TOWNS.) BD.  
**Black-throated Gray Warbler.**
76. *DENDRÆCA CÆRULESCENS* (L.) BD.  
**Black-throated Blue Warbler.**
77. *DENDRÆCA CÆRULEA* (WILS.) BD.  
**Cærulean Warbler.**

78. I  
**Yell**

79. I

80. I

81. I

82. I

83. I

84. I

85. I

86. I

87. I

88. I

89. I

90. I

91. I

92. I

78. *DENDRÆCA CORONATA* (L.) GR.  
**Yellow-rumped Warbler; Myrtle Bird.**
79. *DENDRÆCA AUDUBONII* (TOWNS.) BD.  
**Audubon's Warbler.**
80. *DENDRÆCA BLACKBURNIÆ* (GM.) BD.  
**Blackburnian Warbler.**
81. *DENDRÆCA STRIATA* (FORST.) BD.  
**Black-poll Warbler.**
82. *DENDRÆCA CASTANEA* (WILS.) BD.  
**Bay-breasted Warbler.**
83. *DENDRÆCA PENNSYLVANICA* (L.) BD.  
**Chestnut-sided Warbler.**
84. *DENDRÆCA MACULOSA* (GM.) BD.  
**Black-and-Yellow Warbler.**
85. *DENDRÆCA TIGRINA* (GM.) BD.  
**Cape May Warbler.**
86. *DENDRÆCA DISCOLOR* (V.) BD.  
**Prairie Warbler.**
87. *DENDRÆCA GRACIÆ* COUES.  
**Grace's Warbler.**
88. *DENDRÆCA DOMINICA* (L.) BD.  
**Yellow-throated Warbler.**
89. *DENDRÆCA KIRTLANDI* BD.  
**Kirtland's Warbler.**
90. *DENDRÆCA PALMARUM* (GM.) BD.  
**Yellow Red-poll Warbler.**
91. *DENDRÆCA PINUS* (WILS.) BD.  
**Pine-creeping Warbler.**
92. *SEIURUS AUROCAPILLUS* (L.) SW.  
**Golden-crowned Thrush.**



93. **SI**

94. **SI**  
[ ]

95. **O**

96. **O**

97. **G**

98. **G**

99?\*

100. **I**  
**Y**

100a. **J**

101. **M**

102.  
**Gree**

103. **M**  
**C**

104. **S**

105. **S**  
**I**

---

93. **SEIURUS NOVEBORACENSIS** (GM.) NUTT.  
**Water Wagtail; Water Thrush.**
94. **SEIURUS LUDOVICIANUS** (V.) BP.  
**[Large-billed Water Thrush.**
95. **OPORORNIS AGILIS** (WILS.) BD.  
**Connecticut Warbler.**
96. **OPORORNIS FORMOSUS** (WILS.) BD.  
**Kentucky Warbler.**
97. **GEOTHELYPIS TRICHAS** (L.) CAB.  
**Maryland Yellow-throat.**
98. **GEOTHELYPIS PHILADELPHIA** (WILS.) BD.  
**Mourning Warbler.**
- 99?\* **GEOTHELYPIS MACGILLIVRAYI** (AUD.) BD.  
**Macgillivray's Warbler.**
100. **ICTERIA VIRENS** (L.) BD.  
**Yellow-breasted Chat.**
- 100a. **ICTERIA VIRENS** (L.) BD.,  
*var. LONGICAUDA* (LAWR.) CS.  
**Long-tailed Chat.**
101. **MYODIOCTES MITRATUS** (GM.) AUD.  
**Hooded Flycatching Warbler.**
102. **MYODIOCTES PUSILLUS** (WILS.) BP.  
**Green Black-capped Flycatching Warbler.**
103. **MYODIOCTES CANADENSIS** (L.) AUD.  
**Canadian Flycatching Warbler.**
104. **SETOPHAGA RUTICILLA** (L.) SW.  
**Redstart.**
105. **SETOPHAGA PICTA** SW.  
**Painted Flycatcher.**

---

\*This is probably only a variety of 99.

106. C

107. P

108. P

108a. F

109. P

110. P

111. E

112. T

113. T

114. F

115. C

**Ba**

116. S

117. L

118. J

119. .

106. *CERTHIOLA FLAVEOLA* (L.) SUND.  
**Honey Creeper.**
107. *PYRANGA RUBRA* (L.) V.  
**Scarlet Tanager.**
108. *PYRANGA ÆSTIVA* (L.) V.  
**Summer Redbird.**
- 108a. *PYRANGA ÆSTIVA* (L.) V.,  
*var. COOPERI* (Ridg.) Cs.  
**Cooper's Tanager.**
109. *PYRANGA HEPATICA* Sw.  
**Hepatic Tanager.**
110. *PYRANGA LUDOVICIANA* (WILS.) BP.  
**Louisiana Tanager.**
111. *HIRUNDO HORREORUM* BARTON.  
**Barn Swallow.**
112. *TACHYCINETA BICOLOR* (V.) Cs.  
**White-bellied Swallow.**
113. *TACHYCINETA THALASSINA* (Sw.) CAB.  
**Violet-green Swallow.**
114. *PETROCHELIDON LUNIFRONS* (SAY) CAB.  
**Cliff Swallow; Eave Swallow.**
115. *COTYLE RIPARIA* (L.) BOIE.  
**Bank Swallow; Sand Martin.**
116. *STELGIDOPTERYX SERRIPENNIS* (AUD.) BD.  
**Rough-winged Swallow.**
117. *PROGNE PURPUREA* (L.) BOIE.  
**Purple Martin.**
118. *AMPELIS GARRULUS* L.  
**Bohemian Waxwing.**
119. *AMPELIS CEDRORUM* (V.) BD.  
**Cedar Bird; Cherry Bird.**

120. F

121. M

122. V

123. V

124. V

125. V

125a. V

**W**

126. V

**Y**

127. V

**Blue**

127a.

128? T

129. V

130?

120. *PHÆNOPEPLA NITENS* (Sw.) SCL.  
**Black Ptilogonys.**
121. *MYIADESTES TOWNSENDII* (AUD.) CAB.  
**Townsend's Flycatching Thrush.**
122. *VIREO OLIVACEUS* (L.) V.  
**Red-eyed Vireo.**
123. *VIREO ALTILOQUUS* (V.) GR., .  
*var. BARBATULUS* (Cab.) Cs.  
**Black-whiskered Vireo.**
124. *VIREO PHILADELPHICUS* CASS.  
**Brotherly-love Vireo.**
125. *VIREO GILVUS* (V.) BR.  
**Warbling Vireo.**
- 125a. *VIREO GILVUS* (V.) BR.  
*var. SWAINSONI* (Bd.) Cs.  
**Western Warbling Vireo.**
126. *VIREO FLAVIFRONS* V.  
**Yellow-throated Vireo.**
127. *VIREO SOLITARIUS* (WILS.) V.  
**Blue-headed Vireo; Solitary Vireo.**
- 127a. *VIREO SOLITARIUS* V.,  
*var. PLUMBEUS* (Cs.) All.  
**Plumbeous Vireo.**
- 128? *VIREO VICINIOR* COUES.  
**Gray Vireo.**
129. *VIREO NOVEBORACENSIS* (GM.) BR.  
**White-eyed Vireo.**
- 130? *VIREO HUTTONI* CASS.  
**Hutton's Vireo.**

131. VI

132. VI

133. VI

134. C  
**Great**

135. CO

135a. C

136. HE

137. PI

[138.]?

139. CA

140. CA

141. CA  
**Crim**

141a.\*

---

131. **VIREO BELLII** AUD.  
**Bell's Vireo.**
132. **VIREO PUSILLUS** COUES.  
**Least Vireo.**
133. **VIREO ATRICAPILLUS** WOODH.  
**Black-headed Vireo.**
134. **COLLURIO BOREALIS** (V.) BD.  
**Great Northern Shrike; Butcherbird.**
135. **COLLURIO LUDOVICIANUS** (L.) BD.  
**Loggerhead Shrike.**
- 135a. **COLLURIO LUDOVICIANUS** (L.) BD.,  
*var. EXCUBITOROIDES* (Sw.) Cs.  
**White-rumped Shrike.**
136. **HESPERIPHONA VESPERTINA** (COOP.) BP.  
**Evening Grosbeak.**
137. **PINICOLA ENUCLEATOR** (L.) V.  
**Pine Grosbeak.**
- [138.]? **PYRRHULA CASSINI** (BD.) TRISTR.  
**Cassin's Bullfinch.**
139. **CARPODACUS PURPUREUS** (GM.) GR.  
**Purple Finch.**
140. **CARPODACUS CASSINI** BD.  
**Cassin's Purple Finch.**
141. **CARPODACUS FRONTALIS** (SAY) GR.  
**Crimson-fronted Finch; House Finch.**
- 141a.\* **CARPODACUS FRONTALIS** (SAY) CAB.,  
*var. HAEMORRHOUS* (Wagl.) Rldg.  
**Mexican Purple Finch.**

---

\* Not in the Key. See Ridgway, Am. Jour. Sci. Art, v, p. 30.



142. L

143. L

143a. L

144. L

144a. L

145. L

146. A

146a. J

146b.

[147.]

148. C

149. C

AN

142. **LOXIA LEUCOPTERA** (WILS.).  
**White-winged Crossbill.**
143. **LOXIA CURVIROSTRA** L.,  
*var. AMERICANA* (Wils.) Cs.  
**Common Crossbill.**
- 143a. **LOXIA CURVIROSTRA** L.,  
*var. MEXICANA* (Strickl.) Cs.  
**Large-billed Crossbill.**
144. **LEUCOSTICTE TEPHROCOTIS** SW.  
**Gray-crowned Finch.**
- 144a. **LEUCOSTICTE TEPHROCOTIS** SW.,  
*var. GRISEINUCHA* (Brandt) Cs.  
**Gray-eared Finch.**
145. **LEUCOSTICTE ARCTOA** (PALL.) BP.  
**Siberian Finch.**
146. **ÆGIOTHUS LINARIA** (L.) CAB.  
**Red-poll Linnet.**
- 146a. **ÆGIOTHUS LINARIA** (L.) CAB.  
*var. FUSCESCENS* Cs.  
**Dusky Red-poll.**
- 146b. **ÆGIOTHUS LINARIA** (L.) CAB.  
*var. EXILIPES* Cs.  
**American Mealy Red-poll.**
- [147.] **LINOTA FLAVIROSTRIS** (L.) BP.  
*var. BREWSTERI* (Ridg.) Cs.  
**Brewster's Linnet.**
148. **CHRYSOMITRIS PINUS** (WILS.) BP.  
**Pine Linnet.**
149. **CHRYSOMITRIS TRISTIS** (L.) BP.  
**American Goldfinch; Yellowbird.**

150. C

151. C

151a. C

151b. C

152. F

153. F

154. F

155. F

156. F

157?

157bis

158.

159.

---

150. **CHRYSOMITRIS LAWRENCEI** (CASS.) BP.  
**Lawrence's Goldfinch.**
151. **CHRYSOMITRIS PSALTRIA** (SAY) BP.  
**Arkansas Goldfinch.**
- 151a. **CHRYSOMITRIS PSALTRIA** (SAY) BP.,  
*var. ARIZONÆ* CS.  
**Arizona Goldfinch.**
- 151b. **CHRYSOMITRIS PSALTRIA** (SAY) BP.,  
*var. MEXICANA* (SW.) CS.  
**Mexican Goldfinch.**
152. **PLECTROPHANES NIVALIS** (L.) MEYER.  
**Snow Bunting.**
153. **PLECTROPHANES LAPPONICUS** (L.) SELBY.  
**Lapland Longspur.**
154. **PLECTROPHANES PICTUS** SW.  
**Painted Lark Bunting.**
155. **PLECTROPHANES ORNATUS** TOWNS.  
**Chestnut-colored Lark Bunting.**
156. **PLECTROPHANES MACCOWNII** LAWR.  
**McCown's Lark Bunting.**
- 157? **CENTRONYX BAIRDII** (AUD.) BD.  
**Baird's Bunting.**
- 157bis.\* **CENTRONYX OCHROCEPHALUS** AIKEN.  
**Ochreous-headed Bunting.**
158. **PASSERCULUS PRINCEPS** MAYNARD.  
**Maynard's Sparrow.**
159. **PASSERCULUS SAVANNA** (WILS.) BP.  
**Savanna Sparrow.**

---

\* Not in the Key. See Aiken, Am. Nat., vii, 237.

159a. I

159b. I

160. F

160a. I

161. F

**Bo**

161a. I

162. C

162a. I

163. C

164. C

165. A

166. J

167. I

CHE

- 159a. **PASSERCULUS SAVANNA** (WILS.) BP.,  
*var. ANTHINUS* (Bp.) Cs.  
**Titlark Sparrow.**
- 159b. **PASSERCULUS SAVANNA** (WILS.) BP.,  
*var. SANDVICENSIS* (Gm.) Cs.  
**Northwestern Sparrow.**
160. **PASSERCULUS ROSTRATUS** (CASS.) BD.  
**Beaked Sparrow.**
- 160a. **PASSERCULUS ROSTRATUS** (CASS.) BD.,  
*var. GUTTATUS* (LAWR.) Cs.  
**St. Lucas Sparrow.**
161. **POECETES GRAMINEUS** (Gm.) BD.  
**Bay-winged Bunting; Grass Finch.**
- 161a. **POECETES GRAMINEUS** (Gm.) BD.,  
*var. CONFINIS* Bd.  
**Western Grass Finch.**
162. **COTURNICULUS PASSERINUS** (WILS.) BP.  
**Yellow-winged Sparrow.**
- 162a. **COTURNICULUS PASSERINUS** (WILS.) BP.,  
*var. PERPALLIDUS* Ridg.  
**Bleached Yellow-winged Sparrow.**
163. **COTURNICULUS HENSLOWI** (AUD.) BP.  
**Henslow's Sparrow.**
164. **COTURNICULUS LECONTEI** (AUD.) BP.  
**LeConte's Sparrow.**
165. **AMMODROMUS MARITIMUS** (WILS.) SW.  
**Seaside Finch.**
166. **AMMODROMUS CAUDACUTUS** (Gm.) SW.  
**Sharp-tailed Finch.**
167. **MELOSPIZA LINCOLNI** (AUD.) BD.  
**Lincoln's Finch.**

168. M

169. M

169a.

169b.

169c.

169d.

169e.

169f.

170. M

170a.

171. M

171b

---

168. **MELOSPIZA PALUSTRIS** (WILS.) BD.  
**Swamp Sparrow.**

169. **MELOSPIZA MELODIA** (WILS.) BD.  
**Song Sparrow.**

169a. **MELOSPIZA MELODIA** (WILS.) BD.,  
*var. FALLAX* (Bd.) Ridg.  
**Gray Song Sparrow.**

169b. **MELOSPIZA MELODIA** (WILS.) BD.,  
*var. GUTTATA* (Nutt.) Ridg.  
**Cinereous Song Sparrow.**

169c. **MELOSPIZA MELODIA** (WILS.) BD.,  
*var. RUFINA* (Brandt.) Ridg.  
**Rufous Song Sparrow.**

169d. **MELOSPIZA MELODIA** (WILS.) BD.,  
*var. HEERMANNI* (Bd.) Ridg.  
**Heermann's Song Sparrow.**

169e. **MELOSPIZA MELODIA** (WILS.) BD.,  
*var. GOULDII* (Bd.) Ridg.  
**Gould's Song Sparrow.**

169f. **MELOSPIZA MELODIA** (WILS.) BD.,  
*var. INSIGNIS* (Bd.) Ridg.  
**Bischoff's Song Sparrow.**

170. **PEUCÆA ÆSTIVALIS** (LICHT.) CAB.  
**Bachman's Finch.**

170a. **PEUCÆA ÆSTIVALIS** (LICHT.) CAB.,  
*var. CASSINI* (Woodh.) All.  
**Cassin's Finch.**

171. **PEUCÆA RUFICEPS** (CASS.) BD.  
**Rufous-crowned Finch.**

171bis.\* **PEUCÆA CARPALIS** COUES.  
**Rufous-winged Sparrow.**

---

\*Not in the Key. See Am. Nat., vii, p. 322.



172. PC

173. PC

174. JU

175? J

176? J

177. SI

178. SI

178a. S

179. S

180. S

180a. S

181. S

182. Z

172. **POOSPIZA BILINEATA** (CASS.) SCL.  
**Black-throated Finch.**
173. **POOSPIZA BELLI** (CASS.) SCL.  
**Bell's Finch.**
174. **JUNCO HYEMALIS** (L.) SCL.  
**Snowbird.**
- 175? **JUNCO OREGONUS** (TOWNS.) SCL.  
**Oregon Snowbird.**
- 176? **JUNCO CINEREUS** (SW.) CAB.,  
*var. CANICEPS* (WOODH.) CS.  
**Cinereous Snowbird.**
177. **SPIZELLA MONTICOLA** (GM.) BD.  
**Tree Sparrow.**
178. **SPIZELLA SOCIALIS** (WILS.) BP.  
**Chipping Sparrow.**
- 178a. **SPIZELLA SOCIALIS** (WILS.) BP.,  
*var. ARIZONÆ* CS.  
**Arizona Chipping Sparrow.**
179. **SPIZELLA PUSILLA** (WILS.) BP.  
**Field Sparrow.**
180. **SPIZELLA PALLIDA** (SW.) BP.  
**Clay-colored Sparrow.**
- 180a. **SPIZELLA PALLIDA** (SW.) BP.,  
*var. BREWERI* (CASS.) CS.  
**Brewer's Sparrow.**
181. **SPIZELLA ATRIGULARIS** (CAB.) BD.  
**Black-chinned Sparrow.**
182. **ZONOTRICHIA ALBICOLLIS** (GM.) BP.  
**White-throated Sparrow.**

183. ?

183a.

184. ?

185. ?

186. ?

[187. ?

188. ?

189. ?

189a.

190.

**Lab**

191.

192?

193.

194.

183. ZONOTRICHIA LEUCOPHRYS (FORST.) SW.  
**White-crowned Sparrow.**

183a. ZONOTRICHIA LEUCOPHRYS (FORST.) SW.,  
*var. GAMBELI* (Nutt.) All.  
**Gambel's Sparrow.**

184. ZONOTRICHIA CORONATA (PALL.) BD.  
**Golden-crowned Sparrow.**

185. ZONOTRICHIA QUERULA (NUTT.) GAMB.  
**Harris's Sparrow.**

186. CHONDESTES GRAMMACA (SAY) BP.  
**Lark Finch.**

[187.] PASSER DOMESTICUS LINN.  
**English Sparrow.**

188. PASSERELLA ILIACA (MERREM.) SW.  
**Fox Sparrow.**

189. PASSERELLA TOWNSENDII (AUD.) NUTT.  
**Townsend's Fox Sparrow.**

189a. PASSERELLA TOWNSENDII (AUD.) NUTT.,  
*var. SCHISTACEA* (Bd.) Cs.  
**Slate-colored Fox Sparrow.**

190. CALAMOSPIZA BICOLOR (TOWNS.) BP.  
**Lark Bunting; White-winged Blackbird.**

191. EUSPIZA AMERICANA (GM.) BP.  
**Black-throated Bunting.**

192? EUSPIZA TOWNSENDII (AUD.) BP.  
**Townsend's Bunting.**

193. GONIAPHEA LUDOVICIANA (L.) BOWDICH.  
**Rose-breasted Grosbeak.**

194. GONIAPHEA MELANOCEPHALA (SW.) —.  
**Black-headed Grosbeak.**

195. GC

196. CY  
**Pa**

197. CY

198. CY

199. CY

[200.]

[201.]

202. P

203. C

203a. C

204. E

204a.

205. E

195. **GONIAPHEA CÆRULEA** (L.).  
**Blue Grosbeak.**
196. **CYANOSPIZA CIRIS** (L.) Bd.  
**Painted Finch; Nonpareil.**
197. **CYANOSPIZA VERSICOLOR** (Bp.) Bd.  
**Western Nonpareil.**
198. **CYANOSPIZA AMCENA** (SAY) Bd.  
**Lazuli Finch.**
199. **CYANOSPIZA CYANEA** (L.) Bd.  
**Indigo Bird.**
- [200.] **SPERMOPHILA MORELETII** PUCHERAN.  
**Morelet's Finch.**
- [201.] **PHONIPARA BICOLOR** (L.) Bp.  
**Black-faced Finch.**
202. **PYRRHULOXIA SINUATA** Bp.  
**Texas Cardinal.**
203. **CARDINALIS VIRGINIANUS** (BRISSON) Bp.  
**Cardinal Redbird.**
- 203a. **CARDINALIS VIRGINIANUS** (BRISSON) Bp.,  
*var. IGNEUS* (Bd.) Cs.  
**Fiery Redbird.**
204. **PIPILO ERYTHROPTHALMUS** (L.) V.  
**Towhee Bunting; Chewink.**
- 204a. **PIPILO ERYTHROPTHALMUS** (L.) V.,  
*var. ALLENI* Cs.  
**White-eyed Towhee.**
205. **PIPILO MACULATUS** Sw.,  
*var. OREGONUS* (Bell) Cs.  
**Oregon Towhee.**

205a. P.

205b. P.

206. P  
**Brow**

206a. E

**Whi**

206b. E

207. P

208. P

209. E

210. I

211.\*

211a.

212. A

---

- 205a. **PIPILO MACULATUS** Sw.,  
*var. ARCTICUS* (Sw.) Cs.  
**Arctic Towhee.**
- 205b. **PIPILO MACULATUS** Sw.,  
*var. MEGALONYX* (Bd.) Cs.  
**Spurred Towhee.**
206. **PIPILO FUSCUS** Sw.  
**Brown Towhee; Canon Finch.**
- 206a. **PIPILO FUSCUS** Sw.,  
*var. ALBIGULA* (Bd.) Cs.  
**White-throated Towhee.**
- 206b. **PIPILO FUSCUS** Sw.,  
*var. CRISSALIS* (Vig.) Cs.  
**Crissal Towhee.**
207. **PIPILO ABERTI** Bd.  
**Abert's Towhee.**
208. **PIPILO CHLORURUS** (Towns.) Bd.  
**Green-tailed Towhee.**
209. **EMBERNAGRA RUFIVIRGATA** Lawr.  
**Green Finch.**
210. **DOLICHONYX ORYZIVORUS** (L.) Sw.  
**Bobolink; Reedbird; Ricebird.**
- 211.\* **MOLOTHRUS PECORIS** (Gm.) Sw.  
**Cowbird.**
- 211a. **MOLOTHRUS PECORIS** (Gm.) Sw.,  
*var. OBSCURUS* (Gm.) Cs.  
**Dwarf Cowbird.**
212. **AGELÆUS PHENICEUS** (L.) V.  
**Red-winged Blackbird.**

---

\* This should stand as *Molothrus ater* (Gm.) Gr.



212a. A

H

212b. A

**Red-**

213. X

214. ST

H

214a. S

215. IC

215a. I

216. IC

217. I

218. I

219. I

220. I

221. S

- 212a. *AGELÆUS PHŒNICEUS* (L.) V.,  
*var. GUBERNATOR* (Wagl.) Cs.  
**Red-shouldered Blackbird.**
- 212b. *AGELÆUS PHŒNICEUS* (L.) V.,  
*var. TRICOLOR* (Nutt.) Cs.  
**Red-and-white-shouldered Blackbird.**
213. *XANTHOCEPHALUS ICTEROCEPHALUS* (Bp.) Bp.  
**Yellow-headed Blackbird.**
214. *STURNELLA MAGNA* (L.) Sw.  
**Fieldlark; Meadowlark.**
- 214a. *STURNELLA MAGNA* (L.) Sw.,  
*var. NEGLECTA* (Aud.) All.  
**Western Fieldlark.**
215. *ICTERUS SPURIUS* (L.) Bp.  
**Orchard Oriole.**
- 215a. *ICTERUS SPURIUS* (L.) Bp.,  
*var. AFFINIS* (Lawr.) Cs.  
**Texan Orchard Oriole.**
216. *ICTERUS BALTIMORE* (L.) DANDIN.  
**Baltimore Oriole.**
217. *ICTERUS BULLOCKII* (Sw.) Bp.  
**Bullock's Oriole.**
218. *ICTERUS CUCULLATUS* Sw.  
**Hooded Oriole.**
219. *ICTERUS PARISORUM* Bp.  
**Scott's Oriole.**
220. *ICTERUS MELANOCEPHALUS* (Wagl.) Gr.,  
*var. AUDUBONII* (Girand.) Cs.  
**Audubon's Oriole.**
221. *SCOLECOPHAGUS FERRUGINEUS* (Gm.) Sw.  
**Rusty Grackle.**

222. SC

223. QU

224. QU

**Roat-**

225. QU

**P**

225a. Q

226. CC

227. CC

228. CC

228a. C

228b. C

**N**

229. CC

230. P

231. G

222. *SCOLECOPHAGUS CYANOCEPHALUS* (WAGL.) CAB.  
**Blue-headed Grackle.**

223. *QUISCALUS MACROURUS* SW.  
**Great-tailed Grackle.**

224. *QUISCALUS MAJOR* VIELL.  
**Boat-tailed Grackle; Jackdaw.**

225. *QUISCALUS PURPUREUS* (BARTR.) LICHT.  
**Purple Grackle; Crow Blackbird.**

225a. *QUISCALUS PURPUREUS* (BARTR.) LICHT.,  
*var. AGLEUS* (Bd.) CS.  
**Florida Grackle.**

226. *CORVUS CORAX* LINN.  
**Raven.**

227. *CORVUS CRYPTOLEUCUS* COUCH.  
**White-necked Raven.**

228. *CORVUS AMERICANUS* AUD.  
**Common Crow.**

228a. *CORVUS AMERICANUS* AUD.,  
*var. FLORIDANUS* Bd.  
**Florida Crow.**

228b. *CORVUS AMERICANUS* AUD.,  
*var. CAURINUS* (Bd.) CS.  
**Northwestern Fish Crow.**

229. *CORVUS OSSIFRAGUS* WILS.  
**Fish Crow.**

230. *PICICORVUS COLUMBIANUS* (WILS.) BP.  
**Clarke's Crow.**

231. *GYMNOKITTA CYANOCEPHALA* MAXIM.  
**Blue Crow.**

282. P

283. P

283a. I

284. O

285. O

285a. O

285b.\*

286. A

286a. .

286b.

287. A

---

CH

232. **PSILORHINUS MORIO** (WAGL.) GR.  
**Brown Jay.**
233. **PICA MELANOLEUCA** V.,  
*var. HUDSONICA* (Sub.) ALL.  
**American Magpie.**
- 233a. **PICA MELANOLEUCA** V.,  
*var. NUTTALLI* (AUD.) CS.  
**Yellow-billed Magpie.**
234. **CYANURUS CRISTATUS** (L.) SW.  
**Blue Jay.**
235. **CYANURUS STELLERI** (GM.) SW.  
**Steller's Jay.**
- 235a. **CYANURUS STELLERI** (GM.) SW.,  
*var. MACROLOPHIA* (BD.) ALL.  
**Long-crested Jay.**
- 235b.\* **CYANURUS STELLERI** (GM.) SW.,  
*var. FRONTALIS* RIDG.  
**Blue-fronted Jay.**
236. **APHELOCOMA FLORIDANA** (BARTRAM) CAB.  
**Florida Jay.**
- 236a. **APHELOCOMA FLORIDANA** (BARTH.) CAB.,  
*var. WOODHOUSEI* (BD.) ALL.  
**Woodhouse's Jay.**
- 236b. **APHELOCOMA FLORIDANA** (BARTH.) CAB.,  
*var. CALIFORNICA* (VIG.) CS.  
**Californian Jay.**
237. **APHELOCOMA SORDIDA** (SW.) CAB.  
**Sieber's Jay.**

---

\* Not in the Key. See Ridgway, Am. Journ., v, p. 43.

238. X.

239. PI

[240.] J

241. M

242. T

243. T

244. T

245. T

[246.]

247. M

248. M

[249.]

250. S.

251. S.

238. **XANTHOURA YNCAS** (Bodd.) Bp.,  
*var. LUXUOSA* (Less.) Cs.  
**Rio Grande Jay.**
239. **PERISOREUS CANADENSIS** (L.) Bp.  
**Canada Jay.**
- [240.] **MILVULUS TYRANNUS** (L.) Bp.  
**Fork-tailed Flycatcher.**
241. **MILVULUS FORFICATUS** (Gm.) Sw.  
**Swallow-tailed Flycatcher.**
242. **TYRANNUS CAROLINENSIS** (L.) Bd.  
**Kingbird; Bee-martin.**
243. **TYRANNUS DOMINICENSIS** (Gm.) Rich.  
**Gray Kingbird.**
244. **TYRANNUS VERTICALIS** Say.  
**Arkansas Flycatcher.**
245. **TYRANNUS VOCIFERANS** Sw.  
**Cassin's Flycatcher.**
- [246.] **TYRANNUS MELANCHOLICUS** V.,  
*var. COUCHII* (Bd.) Cs.  
**Couch's Flycatcher.**
247. **MYIARCHUS CRINITUS** (L.) Cab.  
**Great-crested Flycatcher.**
248. **MYIARCHUS CINERASCENS** Lawr.  
**Ash-throated Flycatcher.**
- [249.] **MYIARCHUS LAWRENCEI** (Giraud.) Bd.  
**Lawrence's Flycatcher.**
250. **SAYORNIS SAYUS** (Bp.) Bd.  
**Say's Flycatcher.**
251. **SAYORNIS NIGRICANS** (Sw.) Bp.  
**Black Flycatcher.**



252. SA

253. CO

254. CO

255. CO

255a. C

256. E

257. E

257a. E

258. E

259. E

260. E

261. E

262. M

252. **SAYORNIS FUSCUS** (GM.) BD.  
**Pewee; Pewit; Phoebe.**
253. **CONTOPUS BOREALIS** (SW.) BD.  
**Olive-sided Flycatcher.**
254. **CONTOPUS PERTINAX** CAB.  
**Coues' Flycatcher.**
255. **CONTOPUS VIRENS** (L.) CAB.  
**Wood Pewee.**
- 255a. **CONTOPUS VIRENS** (L.) CAB.,  
*var. RICHARDSONII* (SW.) CS.,  
**Western Wood Pewee.**
256. **EMPIDONAX ACADICUS** (GM.) BD.  
**Acadian Flycatcher.**
257. **EMPIDONAX TRAILLII** (AUD.) BD.  
**Trall's Flycatcher.**
- 257a. **EMPIDONAX TRAILLII** (AUD.) BD.,  
*var. PUSILLUS* (BD.) CS.  
**Little Western Flycatcher.**
258. **EMPIDONAX MINIMUS** BD.  
**Least Flycatcher.**
259. **EMPIDONAX FLAVIVENTRIS** BD.  
**Yellow-bellied Flycatcher.**
260. **EMPIDONAX HAMMONDII** BD.  
**Hammond's Flycatcher.**
261. **EMPIDONAX OBSCURUS** (SW.) BD.  
**Wright's Flycatcher.**
262. **MITREPHORUS FULVIFRONS** (GIRAUD.) SCL.,  
*var. PALLESCENS* CS.  
**Buff-breasted Flycatcher.**

263. P

264. A

265. A

266. A

267. C

267a:

268. C

269. J

270. J

271. C

272?

273.

[274.

■

263. **PYROCEPHALUS RUBINEUS** (BODD.) GR.,  
*var. MEXICANUS* (Scl.) Cs.  
**Vermilion Flycatcher.**
264. **ANTROSTOMUS CAROLINENSIS** (GM.) GOULD.  
**Chuck-will's-widow.**
265. **ANTROSTOMUS VOCIFERUS** (WILS.) BP.  
**Whippoorwill; Night-jar.**
266. **ANTROSTOMUS NUTTALLII** (AUD.) CASS.  
**Nuttall's Whippoorwill.**
267. **CHORDEILES VIRGINIANUS** (BRISS.) BP.  
**Nighthawk.**
- 267a. **CHORDEILES VIRGINIANUS** (BRISS.) BP.,  
*var. HENRYI* (Cass.) All.  
**Western Nighthawk.**
268. **CHORDEILES TEXENSIS** LAWR.  
**Texas Nighthawk.**
269. **PANYPTILA SAXATILIS** (WOODH.) CS.  
**White-throated Swift.**
270. **NEPHECETES NIGER** (GM.) BD.,  
*var. BOREALIS* (Kennerly) Cs.  
**Black Swift.**
271. **CHÆTURA PELASGIA** (L.) STEPH.  
**Chimney Swift.**
- 272? **CHÆTURA VAUXII** (TOWNS.) DEKAY.  
**Vaux's Swift.**
273. **HELIOPÆDICA XANTUSII** LAWR.  
**Xantus Hummingbird.**
- [274.] **LAMPORNIS MANGO** (L.) SW.,  
*(var. POREHYRULA?)*  
**Black-throated Hummingbird.**

GE

275. TRC  
**Ruby-**

276. TRC  
**Bla**

277. SEI  
**Ruf**

278. SEI

279. SEI

280. SEI

281. SEI

282. ST

[283]. A

[284]. T

[285]. P

286. CI

287. CI

288. CI

289. G

275. **TROCHILUS COLUBRIS** L.  
**Ruby-throated Hummingbird.**
276. **TROCHILUS ALEXANDRI** BOURC.  
**Black-chinned Hummingbird.**
277. **SELASPHORUS RUFUS** (GM.) SW.  
**Rufous-backed Hummingbird.**
278. **SELASPHORUS PLATYCERCUS** (SW.) GLD.  
**Broad-tailed Hummingbird.**
279. **SELASPHORUS ANNA** (LESS.)—  
**Anna Hummingbird.**
280. **SELASPHORUS COSTÆ** (BOURC.) BP.  
**Costa Hummingbird.**
281. **SELASPHORUS HELOISÆ** (—) —.  
**Heloise Hummingbird.**
282. **STELLULA CALLIOPE** (—) GLD.  
**Calliope Hummingbird.**
- [283]. **AGYRTRIA LINNÆI** (BP.) —.  
**Linne Hummingbird.**
- [284]. **TROGON MEXICANUS** SW.  
**Mexican Trogon.**
- [285]. **MOMOTUS CERULEICEPS** GOULD.  
**Blue-headed Sawbill.**
286. **CERYLE ALCYON** (L.) BOIE.  
**Belted Kingfisher.**
287. **CERYLE AMERICANA** (GM.) BOIE,  
var. **CABANISI** (Relch.) CS.  
**Cabanis' Kingfisher.**
288. **CROTOPHAGA ANI** L.  
**Ani.**
289. **GEOCOCCYX CALIFORNIANUS** (LESS.) BD.  
**Ground Cuckoo ; Chaparral Cock.**

290. CO

291. CO

292. CO

293. CA

294. HY  
**Pile**

295. PI

296. PI  
**Red-**

297. PI

297a. I

297b. I

298. E  
**H**

298a.

299. I

290. **COCCYZUS ERYTHROPHthalmus** (WILS.) BD.  
**Black-billed Cuckoo.**

291. **COCCYZUS AMERICANUS** (L.) BP.  
**Yellow-billed Cuckoo.**

292. **COCCYZUS SENICULUS** (LATH.)—  
**Mangrove Cuckoo.**

293. **CAMPEPHILUS PRINCIPALIS** (L.) GR.  
**Ivory-billed Woodpecker.**

294. **HYLOTOMUS PILEATUS** (L.) BD.  
**Pileated Woodpecker; Logcock.**

295. **PICUS ALBOLARVATUS** (CASS.) BD.  
**White-headed Woodpecker.**

296. **PICUS BOREALIS** V.  
**Red-cockaded Woodpecker.**

297. **PICUS SCALARIS** WAGLER.  
**Texas Woodpecker.**

297a. **PICUS SCALARIS** WAGL.,  
*var. NUTTALLI* (Gamb.) Cs.  
**Nuttall's Woodpecker.**

297b. **PICUS SCALARIS** WAGL.,  
*var. LUCASANUS* (Xant.) Cs.  
**St. Lucas Woodpecker.**

298. **PICUS VILLOSUS** L.  
**Hairy Woodpecker.**

298a. **PICUS VILLOSUS** L.,  
*var. HARRISI* (Aud.) All.  
**Harris' Woodpecker.**

299. **PICUS PUBESCENS** L.  
**Downy Woodpecker.**



299a. PI

va

**Gai**

300. PIC

**Bl**

301. PIC

**Ba**

301a. PI

**S**

302. SE

**Ye**

302a. S

303?\*

304. S

305. S

306. C

307. C

308. C

---

- 299a. **PICUS PUBESCENS L.**,  
*var. GAIRDNERII* (Aud.) Cs.  
**Gairdner's Woodpecker.**
300. **PICOIDES ARCTICUS** (Sw.) Gz.  
**Black-backed Woodpecker.**
301. **PICOIDES AMERICANUS** BREHM.  
**Banded-backed Woodpecker.**
- 301a. **PICOIDES AMERICANUS** BREHM.,  
*var. DORSALIS* (Bd.) All.  
**Striped-backed Woodpecker.**
302. **SPHYRAPICUS VARIUS** (L.) Bd.  
**Yellow-bellied Woodpecker.**
- 302a. **SPHYRAPICUS VARIUS** (L.) Bd.,  
*var. NUCHALIS* (Bd.) All.  
**Nuchal Woodpecker.**
- 303?\* **SPHYRAPICUS RUBER** (Gm.) Bd.  
**Red-breasted Woodpecker.**
304. **SPHYRAPICUS THYROIDEUS** (Cass.) Bd.  
**Brown-headed Woodpecker.**
305. **SPHYRAPICUS WILLIAMSONI** (Newb.) Bd.  
**Williamson's Woodpecker.**
306. **CENTURUS CAROLINUS** (L.) Bp.  
**Red-bellied Woodpecker.**
307. **CENTURUS AURIFRONS** (Wagl.).  
**Yellow-faced Woodpecker.**
308. **CENTURUS UROPYGIALIS** Bd.  
**Gila Woodpecker.**

---

\* Apparently a var. of 302.

309. MEL

310. MEL

310a. ME

311. ASY

312. CO  
**Golden**

313. CO

314. CO  
**Re**

315. CO

316. ST  
*van*

317. B

317a. F

317b. F

309. **MELANERPES ERYTHROCEPHALUS** (L.) Sw.  
**Red-headed Woodpecker.**

310. **MELANERPES FORMICIVORUS** (Sw.) Bp.  
**Californian Woodpecker.**

310a. **MELANERPES FORMICIVORUS** (Sw.) Bp.,  
*var. ANGUSTIFRONS* Bd.  
**Narrow-fronted Woodpecker.**

311. **ASYNDESMUS TORQUATUS** (Wils.) Cs.  
**Lewis' Woodpecker.**

312. **COLAPTES AURATUS** (L.) Sw.  
**Golden-winged Woodpecker; Flicker.**

313. **COLAPTES CHRYSOIDES** MALH.  
**Gilded Woodpecker.**

314. **COLAPTES MEXICANUS** Sw.  
**Red-shafted Woodpecker.**

315. **CONURUS CAROLINENSIS** (L.) KUHL.  
**Carolina Parroquet.**

316. **STRIX FLAMMEA** L.,  
*var. AMERICANA* (Aud.) Cs.  
**Barn Owl.**

317. **BUBO VIRGINIANUS** (Gm.) Bp.  
**Great Horned Owl.**

317a. **BUBO VIRGINIANUS** (Gm.) Bp.,  
*var. ARCTICUS* (Sw.) Cass.  
**Arctic Horned Owl.**

317b. **BUBO VIRGINIANUS** (Gm.) Bp.,  
*var. PACIFICUS* Cass.  
**Pacific Horned Owl.**

318. **SCO**  
**Screech**

318a. **SCO**  
*var.*  
**K**

318b. **SCO**  
*var.*  
**M**

319. **SCO**  
**F**

320. **OT**  
*var.*  
**L**

321. **BR**

322. **SY**

323. **SY**

324. **SY**

325. **NY**

326. **SU**  
*v*  
**H**

327. **N**

CHECK

318. **SCOPS ASIO** (L.) BP.  
**Screech Owl; Mottled Owl.**
- 318a. **SCOPS ASIO** (L.) BP.,  
*var. KENNICOTTII* (ELL.) CS.  
**Kennicott's Owl.**
- 318b. **SCOPS ASIO** (L.) BP.,  
*var. MACCALLII* (CASS.) CS.  
**McCall's Owl.**
319. **SCOPS FLAMMEOLA** SCL.  
**Flammulated Owl.**
320. **OTUS VULGARIS** (L.),  
*var. WILSONIANUS* (LESS.) ALL.  
**Long-eared Owl.**
321. **BRACHYOTUS PALUSTRIS** AUCT.  
**Short-eared Owl.**
322. **SYRNIUM LAPPONICUM** (L.),  
*var. CINEREUM* (GM.) RIDG.  
**Great Gray Owl.**
323. **SYRNIUM NEBULOSUM** (FORST.) GR.  
**Barred Owl.**
324. **SYRNIUM OCCIDENTALE** XANT.  
**Western Barred Owl.**
325. **NYCTEA NIVEA** (DAUD.) GR.  
**Snowy Owl.**
326. **SURNIA ULULA** (L.) BP.,  
*var. HUDSONICA* (GM.) RIDG.  
**Hawk Owl; Day Owl.**
327. **NYCTALE TENGMALMI** (GM.),  
*var. RICHARDSONII* (BP.) RIDG.  
**Tengmalm's Owl.**

328. NYC  
**Acad**

329. GLA  
*va*

330. GLA

331. MIC

332. SPE

333. CIR

**M**

334. ROS

335. ICT

336. EL  
**White**

337. NA

338. AC  
**Sharp**

339. AC  
**Coop**

340. AS

328. **NYCTALE ACADICA** (GM.) BP.  
**Acadian Owl; Saw-whet Owl.**
329. **GLAUCIDIUM PASSERINUM**,  
*var. CALIFORNICUM* (Scl.) Rldg.  
**Pygmy Owl.**
330. **GLAUCIDIUM FERRUGINEUM**.  
**Ferruginous Owl.**
331. **MICRATHENE WHITNEYI** (COOP.) CS.  
**Whitney's Owl.**
332. **SPEOTYTO CUNICULARIA** (MOL.),  
*var. HYPOGÆA* (BP.) CS.  
**Burrowing Owl.**
333. **CIRCUS CYANEUS** (L.) LACÉP.,  
*var. HUDSONIUS* (L.) CS.  
**Marsh Hawk; Harrier.**
334. **ROSTRHAMUS SOCIABILIS** (V.) D'ORB.  
**Everglade Kite.**
335. **ICTINIA MISSISSIPPIENSIS** (WILS.) GR.  
**Mississippi Kite.**
336. **ELANUS LEUCURUS** (V.) BP.  
**White-tailed Kite; Black-shouldered Kite.**
337. **NAUCLERUS FURCATUS** (L.) VIG.  
**Swallow-tailed Kite.**
338. **ACCIPITER FUSCUS** (GM.) BP.  
**Sharp-shinned Hawk; Pigeon Hawk.**
339. **ACCIPITER COOPERI** BP.  
**Cooper's Hawk; Chicken Hawk.**
340. **ASTUR ATRICAPILLUS** (WILS.) BP.  
**Goshawk.**



341. **FAL**  
**Gyrfa**

341a. **FA**  
*var.*  
**Gree**

342. **FAL**

343. **FAL**  
**Pereg**

344. **FA**

345. **FA**

346. **FA**

346a. **F**  
*ve*  
**Isa**

347. **FA**

348. **BI**

349? **B**  
**C**

350? **B**

351. **B**  
**Red-**

341. **FALCO SACER** FORST.  
**Gyrfalcon; Jerfalcon.**
- 341a. **FALCO SACER** FORST.,  
*var. CANDICANS* (Gm.) RIDG.  
**Greenland Gyrfalcon.**
342. **FALCO MEXICANUS** LICHT.  
**Lanier Falcon.**
343. **FALCO COMMUNIS** VARIORUM.  
**Peregrine Falcon; Duck Hawk.**
344. **FALCO COLUMBARIUS** L.  
**Pigeon Hawk.**
345. **FALCO RICHARDSONII** RIDG.  
**Richardson's Falcon.**
346. **FALCO SPARVERIUS** L.  
**Sparrow Hawk.**
- 346a. **FALCO SPARVERIUS** L.,  
*var. ISABELLINUS* (Sw.) RIDG.  
**Isabella Sparrow Hawk.**
347. **FALCO FEMORALIS** TEMM.  
**Femoral Falcon.**
348. **BUTEO UNICINCTUS** (TEMM.) GR.,  
*var. HARRISI* (Aud.) RIDG.  
**Harris' Buzzard.**
- 349? **BUTEO COOPERI** CASS.  
**Cooper's Buzzard.**
- 350? **BUTEO HARLANI** (AUD.) BP.  
**Harlan's Buzzard.**
351. **BUTEO BOREALIS** (GM.) V.  
**Red-tailed Buzzard; Hen Hawk.**

351a. BUT

or

**Wester**

351b. BUT

S

351c.\* BU

352. BUT

**Red**

352a. BU

**Wester**

353. BUT

**B**

354. BUT

**Sw**

355. BU

356. AR

357. AR

358. AS

359.† O

---

- 351a. **BUTEO BOREALIS** (GM.) V.,  
*var. CALURUS* (Cass.) Ridg.  
**Western Red-tailed Buzzard.**
- 351b. **BUTEO BOREALIS** (GM.) V.,  
*var. LUCASANUS* Ridg.  
**St. Lucas Buzzard.**
- 351c.\* **BUTEO BOREALIS** (GM.) V.,  
*var. KRIDERI*.  
**Krider's Buzzard.**
352. **BUTEO LINEATUS** (GM.) JARD.  
**Red-shouldered Buzzard.**
- 352a. **BUTEO LINEATUS** (GM.) JARD.,  
*var. ELEGANS* (Cass.) Ridg.  
**Western Red-shouldered Buzzard.**
353. **BUTEO ZONOCERCUS** SCHL.  
**Band-tailed Hawk.**
354. **BUTEO SWAINSONI** BP.  
**Swainson's Buzzard.**
355. **BUTEO PENNSYLVANICUS** (WILS.) BP.  
**Broad-winged Buzzard.**
356. **ARCHIBUTEO LAGOPUS** (BRUNN.) GR.,  
*var. SANCTI-JOHANNIS* (GM.) Ridg.  
**Rough-legged Buzzard.**
357. **ARCHIBUTEO FERRUGINEUS** (LICHT.) GR.  
**Ferruginous Buzzard.**
358. **ASTURINA PLAGIATA** SCHLEGEL.  
**Gray Hawk.**
- 359.† **ONYCHOTES GRUBERI** RIDG.  
**Gruber's Buzzard.**

---

\* 351c. Not in Key; not published at date of going to press.

† 359. Questionably North American.

360. PA

361. AC

362. H

363. P

364. C

365. C

366. C

367.

368.

369.

370.

371.

372

373

360. **PANDION HALIAETUS** (L.) SAVIGNY.  
**Fish Hawk; Osprey.**
361. **AQUILA CHRYSÆTUS** (L.).  
**Golden Eagle.**
362. **HALIAETUS LEUCOCEPHALUS** (L.) SAVIGNY.  
**White-headed Eagle; Bald Eagle.**
363. **POLYBORUS THARUS** (MOLY.) CASS.,  
*var. AUDUBONII* (CASS.) RIDG.  
**Audubon's Caracara.**
364. **CATHARTES CALIFORNIANUS** (SHAW) CUV.  
**Californian Vulture.**
365. **CATHARTES AURA** (L.) ILLIGER.  
**Turkey Buzzard.**
366. **CATHARTES ATRATUS** (BARTR.) LESS.  
**Black Vulture; Carrion Crow.**
367. **COLUMBA FASCIATA** SAY.  
**Band-tailed Pigeon.**
368. **COLUMBA FLAVIROSTRIS** WAGLER.  
**Red-billed Pigeon.**
369. **COLUMBA LEUCOCEPHALA** L.  
**White-crowned Pigeon.**
370. **ECTOPISTES MIGRATORIUS** (L.) SW.  
**Wild Pigeon.**
371. **ZENÆDURA CAROLINENSIS** (L.) BP.  
**Carolina Dove.**
372. **ZENÆDA AMABILIS** BP.  
**Zenaida Dove.**
373. **MELOPELEIA LEUCOPTERA** (L.) BP.  
**White-winged Dove.**

374. CHA

374a. CH

375. SCA

376. GE

377. ST

378. OB

379. MI

379a. M

380. T

Can

380a.

381. T

381a.

374. **CHAMÆPELEIA PASSERINA** (L.) Sw.  
**Ground Dove.**
- 374a. **CHAMÆPELEIA PASSERINA** (L.) Sw.,  
*var. PALLESCENS* (Bd.) Cs.  
**St. Lucas Ground Dove.**
375. **SCARDAFELLA SQUAMOSA** (TEMN.) Bp.,  
*var. INCA* (Less.) Cs.  
**Scaled Dove.**
376. **GEOTRYGON MARTINICA** (Gm.) REICH.  
**Key West Dove.**
377. **STARONENAS CYANOCEPHALA** (L.) Bp.  
**Blue-headed Ground Dove.**
378. **ORTALIDA VETULA** (WAGL.).  
**Texan Guan.**
379. **MELEAGRIS GALLOPAVO** L.  
**Turkey.**
- 379a. **MELEAGRIS GALLOPAVO** L.,  
*var. AMERICANA* (Bartr.) Cs.  
**Common Wild Turkey.**
380. **TETRAO CANADENSIS** L.  
**Canada Grouse; Spruce Partridge.**
- 380a. **TETRAO CANADENSIS** L.,  
*var. FRANKLINI* (Douglas) Cs.  
**Franklin's Grouse.**
381. **TETRAO OBSCURUS** SAY.  
**Dusky Grouse.**
- 381a. **TETRAO OBSCURUS** SAY,  
*var. RICHARDSONII* (Dougl.) Cs.  
**Richardson's Grouse.**



382. CEN

383. PEI  
I

383a. PE

384. CU  
**Pinna**

385. BC  
**Ruffe**

385a. B

385b. I

386. L

387. I

388. I  
**V**

389. C  
**Virg**

389a.

382. **CENTROCERCUS UROPHASIANUS** (BP.) SW.  
**Sage Cock; Cock-of-the-Plains.**

383. **PEDICECETES PHASIANELLUS** (L.) ELL.  
**Northern Sharp-tailed Grouse.**

383a. **PEDICECETES PHASIANELLUS** (L.) ELL.,  
*var. COLUMBIANUS* (Ord.) Cs.  
**Common Sharp-tailed Grouse.**

384. **CUPIDONIA CUPIDO** (L.) BD.  
**Pinnated Grouse; Prairie Hen.**

385. **BONASA UMBELLUS** (L.) STEPH.  
**Ruffed Grouse; Partridge; Pheasant.**

385a. **BONASA UMBELLUS** (L.) STEPH.,  
*var. UMBELLOIDES* (Dougl.) Bd.  
**Gray Ruffed Grouse.**

385b. **BONASA UMBELLUS** (L.) STEPH.,  
*var. SABINEI* (Dougl.) Cs.  
**Oregon Ruffed Grouse.**

386. **LAGOPUS ALBUS** (GM.) AUD.  
**Willow Ptarmigan.**

387. **LAGOPUS RUPESTRIS** (GM.) LEACH.  
**Rock Ptarmigan.**

388. **LAGOPUS LEUCURUS** SW.  
**White-tailed Ptarmigan.**

389. **ORTYX VIRGINIANUS** (L.) BP.  
**Virginia Partridge; Quail; Bob-white.**

389a. **ORTYX VIRGINIANUS** (L.) BP.,  
*var. FLORIDANUS* CS.  
**Florida Partridge.**

389b. OR

390. OR

391. LO

392. LO

393. CA

394. CY

395. SQ

396. CI

397. AE

398. AE

399. AE

400. AE

401. AE

- 389b. **ORTYX VIRGINIANUS** (L.) BR.,  
*var. TENANUS* (Lawr.) Cs.  
**Texas Partridge.**
390. **OREORTYX PICTUS** (DOUGL.) BD.  
**Plumed Partridge.**
391. **LOPHORTYX CALIFORNICUS** (SHAW) BR.  
**Californian Partridge.**
392. **LOPHORTYX GAMBELI** NUTT.  
**Gambel's Partridge.**
393. **CALLIPEPLA SQUAMATA** (VIG.) GR.  
**Scaled Partridge.**
394. **CYRTONYX MASSENA** (LESS.) GLD.  
**Massena Partridge.**
395. **SQUATAROLA HELVETICA** (L.) CUV.  
**Black-bellied Plover.**
396. **CHARADRIUS FULVUS** GM.,  
*var. VIRGINICUS* (BORCK.) CS.  
**Golden Plover.**
397. **ÆGIALITIS VOCIFERUS** (L.) CASS.  
**Kildeer Plover.**
398. **ÆGIALITIS WILSONIUS** (ORD) CASS.  
**Wilson's Plover.**
399. **ÆGIALITIS SEMIPALMATUS** (BR.) CAB.  
**Sempalmated Plover; Ringneck.**
400. **ÆGIALITIS MELODUS** (ORD) CAB.  
**Piping Plover; Ringneck.**
401. **ÆGIALITIS CANTIANUS** (LATH.).  
**Snowy Plover.**

402.\* **ÆG**

403. **APP**

404. **HÆ**

405. **HÆ**  
**B**

406. **ST**

406a. **ST**

407. **RE**

408. **HI**

409. **ST**

410. **L**

411. **P**

412. **F**

[413.]

---

**CHRE**

- 402.\* **ÆGIALITIS ASIATICUS** (PALL.),  
var. **MONTANUS** (TOWNS.) CS.  
**Mountain Plover.**
403. **APHRIZA VIRGATA** (GM.) GR.  
**Surf Bird.**
404. **HÆMATOPUS PALLIATUS** TEMM.  
**Oyster-catcher.**
405. **HÆMATOPUS NIGER** PALLAS.  
**Black Oyster-catcher.**
406. **STREPSILAS INTERPRES** (L.) ILL.  
**Turnstone.**
- 406a. **STREPSILAS INTERPRES** (L.) ILL.,  
var. **MELANOCEPHALUS** (VIG.) CS.  
**Black-headed Turnstone.**
407. **RECURVIROSTRA AMERICANA** GM.  
**Avocet.**
408. **HIMANTOPUS NIGRICOLLIS** V.  
**Stilt.**
409. **STEGANOPUS WILSONI** (SAB.) CS.  
**Wilson's Phalarope.**
410. **LOBLES HYPERBOREUS** (L.) CUV.  
**Northern Phalarope.**
411. **PHALAROPUS FULICARIUS** (L.) BP.  
**Red Phalarope.**
412. **PHILOHELA MINOR** (GM.) GR.  
**American Woodcock.**
- [413.] **SCOLOPAX RUSTICOLA** L.  
**European Woodcock.**

---

\* May require to stand as *Eudromias montanus* (Towns.) Hartlug.

414. G  
**Am**

415. M

415a. J

416. M

417. E

417a. J

**We**

418. T

419. T

420. T

421. T

422?

423.

424.

414. *GALLINAGO WILSONI* (TEMML.) BP.  
**American Snipe; Wilson's Snipe.**
415. *MACRORHAMPHUS GRISEUS* (GM.) LEACH.  
**Red-breasted Snipe.**
- 415a. *MACRORHAMPHUS GRISEUS* (GM.) LEACH,  
*var. SCOLOPACEUS* (Say) CS.  
**Long-billed Snipe.**
416. *MICROPALAMA HIMANTOPUS* (BP.) BD.  
**Stilt Sandpiper.**
417. *EREUNETES PUSILLUS* (L.) CASS.  
**Semipalmated Sandpiper.**
- 417a. *EREUNETES PUSILLUS* (L.) CASS.,  
*var. OCCIDENTALIS* (Lawr.) CS.  
**Western Semipalmated Sandpiper.**
418. *TRINGA MINUTILLA* V.  
**Least Sandpiper.**
419. *TRINGA BAIRDII* COUES.  
**Baird's Sandpiper.**
420. *TRINGA MACULATA* V.  
**Pectoral Sandpiper.**
421. *TRINGA BONAPARTEI* SCHL.  
**White-rumped Sandpiper.**
- 422? *TRINGA COOPERI* BD.  
**Cooper's Sandpiper.**
423. *TRINGA MARITIMA* BRUNNICH.  
**Purple Sandpiper.**
424. *TRINGA ALPINA* L.,  
*var. AMERICANA* CASS.  
**American Dunlin.**



425. TR.

426. TR.  
**Red-b**

426bis.\*

427. CA  
**Sa**

428. LI  
**Gr**

429. LI

430. LI

431. T  
**ser**

432. T

433. T

[434.]

435. T

436. T

---

\*No  
J. E. L.

425. *TRINGA SUBARQUATA* GULD.  
**Curlew Sandpiper.**
426. *TRINGA CANUTUS* L.  
**Red-breasted Sandpiper; Knot.**
- 426bis.\* *TRINGA CRASSIROSTRIS* SCHLEGEL.  
**Thick-billed Sandpiper.**
427. *CALIDRIS ARENARIA* (L.) ILL.  
**Sanderling; Ruddy Plover.**
428. *LIMOSA FEDOA* (L.) ORD.  
**Great Marbled Godwit.**
429. *LIMOSA HUDSONICA* (LATH.) SW.  
**Hudsonian Godwit.**
430. *LIMOSA UROPYGIALIS* GOULD.  
**White-rumped Godwit.**
431. *TOTANUS SEMIPALMATUS* GM.  
**Sempalmated Tattler; Willet.**
432. *TOTANUS MELANOLEUCUS* GM.  
**Greater Tell-tale.**
433. *TOTANUS FLAVIPES* GM.  
**Yellow-shanks.**
- [434.] *TOTANUS CHLOROPUS* NILSSON.  
**Green-shanks.**
435. *TOTANUS SOLITARIUS* WILS.  
**Solitary Tattler.**
436. *TRINGOIDES MACULARIUS* (L.) GR.  
**Spotted Sandpiper.**

---

\* Not in the Key. Obtained at St. Paul's Island, by H. W. Elliot. Identified by J. E. Harting. See DALL, *Am. Nat.*, vii, Oct., 1873, p. 634.

[437.] P

438. AC  
**Bartra**

439. TR

440. HE

441. NU

442. NU

443. N

444. T

445. II

446. I

[447.]

448. I

449. A

450?

- [437.] **PHILOMACHUS PUGNAX** (L.) GR.  
**Ruff; Reeve.**
438. **ACTITURUS BARTRAMIUS** (WILS.) BP.  
**Bartramian Sandpiper; Upland Plover.**
439. **TRYNGITES RUFESCENS** (V.) CAB.  
**Buff-breasted Sandpiper.**
440. **HETEROSCELUS INCANUS** (GM.) CS.  
**Wandering Tattler.**
441. **NUMENIUS LONGIROSTRIS** WILS.  
**Long-billed Curlew.**
442. **NUMENIUS HUDSONICUS** LATH.  
**Hudsonian Curlew.**
443. **NUMENIUS BOREALIS** (FORST.) LATH.  
**Esquimaux Curlew.**
444. **TANTALUS LOCULATOR** L.  
**Wood Ibis.**
445. **IBIS FALCINELLUS** AUCT.,  
var. **ORDII** (BP.) ALL.  
**Glossy Ibis.**
446. **IBIS ALBA** (L.) V.  
**White Ibis.**
- [447.] **IBIS RUBRA** (L.) V.  
**Scarlet Ibis.**
448. **PLATALEA AJAJA** L.  
**Roscate Spoonbill.**
449. **ARDEA HERODIAS** L.  
**Great Blue Heron.**
- 450? **ARDEA WURDEMANNI** BD.  
**Florida Heron.**

451. A

452. A  
G

453. A

454. A

455. A  
I

456. A  
L

457. A

458. N

459. N  
Y

460. F  
I

461. A

462. C  
Wh

463. C  
B

451. *ARDEA OCCIDENTALIS* AUD.  
**Great White Heron.**
452. *ARDEA EGRETTA* GM.  
**Great White Egret.**
453. *ARDEA CANDIDISSIMA* JACQUIN.  
**Little White Egret.**
454. *ARDEA LEUCOGASTRA* GM.,  
*var. LEUCOPRYMNA* (Licht.) Cs.  
**Louisiana Heron.**
455. *ARDEA RUF*A BODD.  
**Reddish Egret.**
456. *ARDEA CÆRULEA* L.  
**Little Blue Heron.**
457. *ARDEA VIRESCENS* L.  
**Green Heron.**
458. *NYCTIARDEA GRISEA* (L.) STEPH.,  
*var. NÆVIA* (Bodd.) Allen.  
**Night Heron.**
459. *NYCTIARDEA VIOLACEA* (L.) SW.  
**Yellow-crowned Night Heron.**
460. *BOTAURUS MINOR* (GM.).  
**Bittern; Indian Hen.**
461. *ARDETTA EXILIS* (GM.) GR.  
**Least Bittern.**
462. *GRUS AMERICANUS* (L.) ORD.  
**White Crane; Whooping Crane.**
463. *GRUS CANADENSIS* (L.) TEMM.  
**Brown Crane; Sandhill Crane.**

464. **ARAI**

**S**

465. **RAL**  
**Clapper**

466. **RAL**  
**Fresh-**

467. **RAL**

468. **PO**  
**Caroll**

469. **PO**

470. **PO**

[471.] **CI**

472. **GA**

473. **PO**

474. **FU**

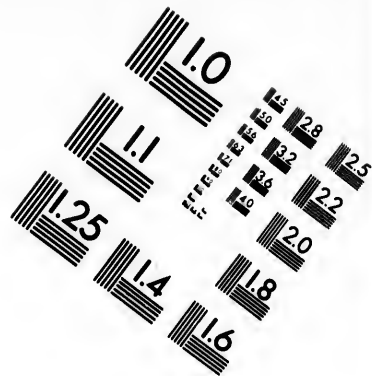
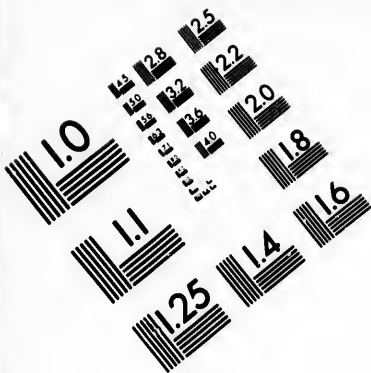
475. **PE**

476. **CY**

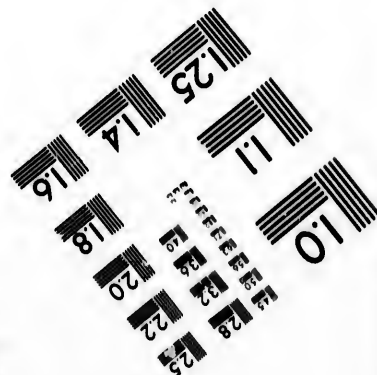
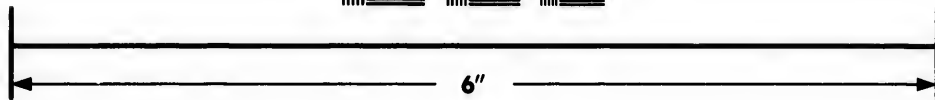
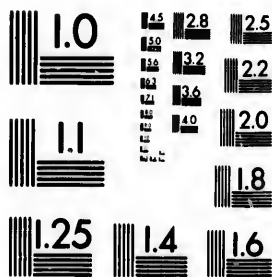
464. **ARAMUS SCOLOPACEUS** (GM.) V.,  
*var. GIGANTEUS* (Bp.) Cs.,  
**Scolopaceous Courlan.**
465. **RALLUS LONGIROSTRIS** BODD.  
**Clapper Rail; Salt-water Marsh Hen.**
466. **RALLUS ELEGANS** AUD.  
**Fresh-water Marsh Hen.**
467. **RALLUS VIRGINIANUS** L.  
**Virginia Rail.**
468. **PORZANA CAROLINA** (L.) V.  
**Carolina Rail; Sora; Ortolan.**
469. **PORZANA NOVEBORACENSIS** (GM.) CASS.  
**Yellow Rail.**
470. **PORZANA JAMAICENSIS** (GM.) CASS.  
**Black Rail.**
- [471.] **CREX PRATENSIS** BECHSTEIN.  
**Corn Crane.**
472. **GALLINULA GALEATA** (LICHT.) BP.,  
(*CHLOROPUS var?*).  
**Florida Gallinule.**
473. **PORPHYRIO MARTINICA** (L.) TEMM.  
**Purple Gallinule.**
474. **FULICA AMERICANA** GM.  
**Coot.**
475. **PHOENICOPTERUS RUBER** L.  
**Flamingo.**
476. **CYGNUS BUCCINATOR** RICHARDSON.  
**Trumpeter Swan.**





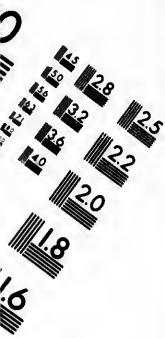


**IMAGE EVALUATION  
TEST TARGET (MT-3)**



**Photographic  
Sciences  
Corporation**

23 WEST MAIN STREET  
WEBSTER, N.Y. 14580  
(716) 872-4503



477. CYC

478. AN

v  
**Ameri**

479? AN

480. AN

480a. A

481. AN

482. P

[483.]

484. B

485. F

**Ca**

485a.

485b.

477. **CYGNUS AMERICANUS** SHARPLESS.

**Whistling Swan.**

478. **ANSER ALBIFRONS** GM.,

*var. GAMBELI* (Hartl.) Cs.

**American White-fronted Goose.**

479? **ANSER CÆRULESCENS** L.

**Blue Goose.**

480. **ANSER HYPERBOREUS** PALL.

**Snow Goose.**

480a. **ANSER HYPERBOREUS** PALL.,

*var. ALBATUS* (Cass.) Cs.

**Lesser Snow Goose.**

481. **ANSER ROSSII** Bd.

**Ross' Goose.**

482. **PHILACTE CANAGICA** (SEVAST.) BANN.

**Painted Goose.**

[483.] **BRANTA LEUCOPSIS** (L.).

**Barnacle Goose.**

484. **BRANTA BERNICLA** (L.).

**Brant Goose.**

485. **BRANTA CANADENSIS** (L.).

**Canada Goose; Wild Goose.**

485a. **BRANTA CANADENSIS** (L.),

*var. LEUCOPAREIA* (Brandt) Cs.

**White-collared Goose.**

485b. **BRANTA CANADENSIS** (L.),

*var. HUTCHINSII* (Rich.) Cs.

**Hutchins' Goose.**

486. DE

487. DE

488. AN

489. AN

490. DA

491. CH

[492.] M

493? M

AN

[494.] C

495. Q

496. Q

497. Q

498. S

499. A

Summ

486. *DENDROCYGNA FULVA* (GM.) BURM.  
**Fulvous Tree Duck.**
487. *DENDROCYGNA AUTUMNALIS* (L.) EYTON.  
**Autumnal Tree Duck.**
488. *ANAS BOSCHAS* L.  
**Mallard.**
489. *ANAS OBSCURA* GM.  
**Dusky Duck.**
490. *DAFILA ACUTA* (L.) JENYNS.  
**Pintail; Sprigtail.**
491. *CHAULELASMUS STREPERUS* (L.) GRAY.  
**Gadwall; Gray Duck.**
- [492.] *MARECA PENELOPE* (L.) BP.  
**European Widgeon.**
- 493? *MARECA AMERICANA* (GM.) STEPH.  
**American Widgeon; Baldpate.**
- [494.] *QUERQUEDULA CRECCA* (L.) STEPH.  
**English Teal.**
495. *QUERQUEDULA CAROLINENSIS* (GM.).  
**Green-winged Teal.**
496. *QUERQUEDULA DISCORS* (L.) STEPH.  
**Blue-winged Teal.**
497. *QUERQUEDULA CYANOPTERA* (V.) CASS.  
**Cinnamon Teal.**
498. *SPATULA CLYPEATA* (L.) BOIE.  
**Shoveller.**
499. *AIX SPONSA* (L.) BOIE.  
**Summer Duck; Wood Duck.**

500. FU

501? FU

502. FU

503. FU  
v

504. FU

505. BU

506. BU

507. BU

508. H

509. C

510. H

511. S

512. S

513. S

Ch



500. *FULIGULA MARILA* (L.) STEPH.  
**Greater Blackhead.**
- 501? *FULIGULA AFFINIS* EYTON.  
**Lesser Blackhead.**
502. *FULIGULA COLLARIS* (DONOVAN) BP.  
**Ring-necked Duck.**
503. *FULIGULA FERINA* (L.) SW.,  
*var. AMERICANA* (EYTON) COUES.  
**Redhead; Pochard.**
504. *FULIGULA VALLISNERIA* (WILS.) STEPH.  
**Canvas-back.**
505. *BUCEPHALA CLANGULA* (L.) GR.  
**Golden-eyed Duck.**
506. *BUCEPHALA ISLANDICA* (GM.) BD.  
**Barrow's Golden-eye.**
507. *BUCEPHALA ALBEOLA* (L.) BD.  
**Buffle-headed Duck.**
508. *HARELDA GLACIALIS* (L.) LEACH.  
**Long-tailed Duck.**
509. *CAMPTOLEMUS LABRADORIUS* (GM.) GR.  
**Labrador Duck.**
510. *HISTRIONICUS TORQUATUS* (L.) BP.  
**Harlequin Duck.**
511. *SOMATERIA STELLERI* (PALL.) JARDINE.  
**Steller's Duck.**
512. *SOMATERIA FISCHERI* (BRANDT) COUES.  
**Spectacled Eider.**
513. *SOMATERIA MOLLISSIMA* (L.) LEACH.  
**Eider Duck.**

514? SC

515. SC

516. CE

A

517. CE

518. CE

518a. C

519. F

[520.]

521. I

M

522. I

Re

523.

524.

Ca

525.

I

526.

- 514? **SOMATERIA V-NIGRA** GRAY.  
**Pacific Eider.**
515. **SOMATERIA SPECTABILIS** (L.) LEACH.  
**King Eider.**
516. **CEDEMIA AMERICANA** SW.  
**American Black Scoter.**
517. **CEDEMIA FUSCA** (L.) SW.,  
(? var. **VELVETINA** Cass.)  
**Velvet Scoter.**
518. **CEDEMIA PERSPICILLATA** (L.) FLEMING.  
**Surf Duck.**
- 518a. **CEDEMIA PERSPICILLATA** (L.) FLEMING,  
var. **TROWBRIDGEI** (Bd.) Coues.  
**Long-billed Scoter.**
519. **ERISMATURA RUBIDA** (WILS.) BP.  
**Ruddy Duck.**
- [520.] **ERISMATURA DOMINICA** (L.) EYTON.  
**St. Domingo Duck.**
521. **MERGUS MERGANSER** L.  
**Merganser; Goosander.**
522. **MERGUS SERRATOR** L.  
**Red-breasted Merganser.**
523. **MERGUS CUCULLATUS** L.  
**Hooded Merganser.**
524. **SULA BASSANA** L.  
**Gannet; Solan Goose.**
525. **SULA FIBER** L.  
**Booby Gannet.**
526. **PELECANUS TRACHYRHYNCHUS** LATH.  
**White Pelican.**

527. PE

528. GB  
Con

529. GE

530. GE  
I

530a. G

531. G

532. G

533. G

534. C

535. C

536. T

537.

538.

539.

527. PELECANUS FUSCUS L.  
**Brown Pelican.**
528. GRACULUS CARBO (L.) GRAY.  
**Common Cormorant; Shag.**
529. GRACULUS CINCINNATUS (BRANDT) GRAY.  
**White-tufted Cormorant.**
530. GRACULUS DILOPHUS (SW.) GRAY.  
**Double-crested Cormorant.**
- 530a. GRACULUS DILOPHUS (SW.) GRAY,  
*var. FLORIDANUS* (AUD.) COUES.  
**Florida Cormorant.**
531. GRACULUS MEXICANUS (BRANDT) BP.  
**Mexican Cormorant.**
532. GRACULUS PENICILLATUS (BRANDT) BP.  
**Brandt's Cormorant.**
533. GRACULUS PERSPICILLATUS (PALL.) LAWR.  
**Pallas' Cormorant.**
534. GRACULUS BICRISTATUS (PALL.) BD.  
**Red-faced Cormorant.**
535. GRACULUS VIOLACEUS (GM.) GR.  
**Violet-green Cormorant.**
536. PLOTUS ANHINGA L.  
**Anhinga; Darter.**
537. TACHYPETES AQUILUS (L.) V.  
**Frigate.**
538. PHAETHON FLAVIROSTRIS BRANDT.  
**Yellow-billed Tropic Bird.**
539. STERCORARIUS SKUA (BRUNN.) COUES.  
**Skua Gull.**

540. STE

541. STE

542. STE  
**Arc**

543. LA

544. LA

545. LA  
**C**

546. LA  
**Great**

547. LA  
**Her**

547a. I

547b. I

548. I

548a.

549. I  
*var. B*  
**Am**

540. STERCORARIUS POMATORHINUS (TEMME.) LAWR.  
**Pomarine Jaeger.**
541. STERCORARIUS PARASITICUS (BRUNN.) GRAY.  
**Richardson's Jaeger.**
542. STERCORARIUS BUFFONI (BOIE) COUES.  
**Arctic Jaeger; Long-tailed Jaeger.**
543. LARUS GLAUCUS BRUNN.  
**Glaucous Gull.**
544. LARUS LEUCOPTERUS FABER.  
**White-winged Gull.**
545. LARUS GLAUCESCENS LIGHT.  
**Glaucous-winged Gull.**
546. LARUS (MARINUS) L.  
**Great Black-backed Gull.**
547. LARUS ARGENTATUS BRUNN.  
**Herring Gull; Common Gull.**
- 547a. LARUS ARGENTATUS BRUNN.,  
*var. SMITHSONIANUS* COUES.  
**American Herring Gull.**
- 547b. LARUS ARGENTATUS BRUNN.,  
*var. OCCIDENTALIS* (AUD.) COUES.  
**Western Herring Gull.**
548. LARUS DELAWARENSIS ORD.  
**Ring-billed Gull.**
- 548a. LARUS DELAWARENSIS ORD.,  
*var. CALIFORNICUS* (LAWR.) COUES.  
**Californian Gull.**
549. LARUS CANUS L.,  
*var. BRACHYRHYNCHUS* (RICH.) COUES.  
**American Mew Gull.**

550. I

551. I

552. I

552a.

553. I

554.

555.

556.

557.

558.

559.

560.

G

561.

562



550. **LARUS EBURNEUS** GM.  
**Ivory Gull.**
551. **LARUS BELCHERI** VIGORS.  
**White-headed Gull**
552. **LARUS TRIDACTYLUS** L.  
**Kittiwake Gull.**
- 552a. **LARUS TRIDACTYLUS** L.,  
*var. KOTZEBUI* (Bp.) COUES.  
**Pacific Kittiwake.**
553. **LARUS BREVIROSTRIS** (BRANDT) COUES.  
**Short-billed Kittiwake.**
554. **LARUS ATRICILLA** L.  
**Laughing Gull.**
555. **LARUS FRANKLINI** RICH.  
**Franklin's Rosy Gull.**
556. **LARUS PHILADELPHIA** (ORD) COUES.  
**Bonaparte's Gull.**
557. **RHODOSTETHIA ROSEA** (MACGILL.) BP.  
**Wedge-tailed Gull.**
558. **XEMA SABINEI** (SAB.) BP.  
**Fork-tailed Gull.**
559. **XEMA FURCATUM** (NEBOUX).  
**Swallow-tailed Gull.**
560. **STERNA ANGLICA** MONTAGU.  
**Gull-billed Tern; Marsh Tern.**
561. **STERNA CASPIA** PALLAS,  
*var. IMPERATOR* COUES.  
**Caspian Tern.**
562. **STERNA REGIA** GAMBEL.  
**Royal Tern.**

563. ST

564. ST

565. ST

**Comm**

566. ST

567. ST

568. S

569. S

570. S

[571.]

572. S

573. S

[574.]

575. S

576.

577.

563. STERNA GALERICULATA LIGHT.  
**Elegant Tern.**
564. STERNA CANTIACA GM.  
**Sandwich Tern.**
565. STERNA HIRUNDO L.  
**Common Tern; Sea Swallow.**
566. STERNA FORSTERI NUTT.  
**Forster's Tern.**
567. STERNA MACROURA NAUMANN.  
**Arctic Tern.**
568. STERNA LONGIPENNIS NORDMANN.  
**Pike's Tern.**
569. STERNA PARADISÆA BRUNN.  
**Roseate Tern.**
570. STERNA SUPERCILIARIS V.  
**Least Tern.**
- [571.] STERNA TRUDEAUI AUD.  
**Trudeau's Tern.**
572. STERNA ALEUTICA BAIRD.  
**Aleutian Tern.**
573. STERNA FULIGINOSA GM.  
**Sooty Tern.**
- [574.] STERNA ANOSTHÆTA SCOPOLI.  
**Bridled Tern.**
575. HYDROCHELIDON FISSIPES (L.) GRAY.  
**Black Tern.**
576. ANOUS STOLIDUS (L.) LEACH.  
**Noddy Tern.**
577. RHYNCHOPS NIGRA L.  
**Black Skimmer.**

578. DI

579. DI  
B

580. DI

581. F

582. F

582a. :

582b.

[583.]

[584.]

[585.]

586.

W

587.

Sto

588.

589.

578. *DIOMEDEA BRACHYURA* TEMM.  
**Short-tailed Albatross.**
579. *DIOMEDEA NIGRIPES* AUD.  
**Black-footed Albatross.**
580. *DIOMEDEA FULIGINOSA* GM.  
**Sooty Albatross.**
581. *FULMAREUS GIGANTEUS* (GM.).  
**Giant Fulmar.**
582. *FULMAREUS GLACIALIS* (L.) STEPH.  
**Fulmar Petrel.**
- 582a. *FULMAREUS GLACIALIS* (L.) STEPH.,  
*var. PACIFICUS* (Aud.) COUES.  
**Pacific Fulmar.**
- 582b. *FULMAREUS GLACIALIS* (L.) STEPH.,  
*var. RODGERSI* (Cass.) COUES.  
**Rodgers' Fulmar.**
- [583.] *FULMAREUS TENUIROSTRIS* (AUD.) COUES.  
**Slender-billed Fulmar.**
- [584.] *DAPTION CAPENSIS* (L.) STEPH.  
**Pintado Petrel; Cape Pigeon.**
- [585.] *ÆSTRELATA HÆSITATA* (KUHLE) COUES.  
**Black-capped Petrel.**
586. *HALOCYPTENA MICROSOMA* COUES.  
**Wedge-tailed Petrel; Least Petrel.**
587. *PROCELLARIA PELAGICA* L.  
**Stormy Petrel; Mother Carey's Chicken.**
588. *CYMOCHOREA LEUCORRHOEA* (V.) COUES.  
**Leach's Petrel.**
589. *CYMOCHOREA MELANIA* (BP.) COUES.  
**Black Petrel.**

590. C

591. C

592. C

593. C

[594.]

[595.]

596. C

597.

598?

599.

600.

601.

602

603

604

590. CYMOCHOREA HOMOCHROA COUES.  
**Ashy Petrel.**
591. OCEANODROMA FURCATA (GM.) BP.  
**Fork-tailed Petrel.**
592. OCEANODROMA HORNBYI (GRAY) BP.  
**Hornby's Petrel.**
593. OCEANITES OCEANICA (KUHLE) COUES.  
**Wilson's Petrel.**
- [594.] FREGETTA GRALLARIA (V.) BP.  
**White-bellied Petrel.**
- [595.] PUFFINUS MELANURUS (BONN.) COUES.  
**Black-tailed Shearwater.**
596. PUFFINUS KUHLEI BP.  
**Cinereous Shearwater.**
597. PUFFINUS MAJOR FABER.  
**Greater Shearwater.**
- 598? PUFFINUS CREATOPUS COUES.  
**Flesh-footed Shearwater.**
599. PUFFINUS ANGLORUM TEMM.  
**Manks Shearwater.**
600. PUFFINUS OBSCURUS (GM.) LATH.  
**Dusky Shearwater.**
- 601? PUFFINUS OPISTHOMELAS COUES.  
**Black-vented Shearwater.**
- 602? PUFFINUS FULIGINOSUS STRICKL.  
**Sooty Shearwater.**
- 603? PUFFINUS AMAUROSOMA COUES.  
**Dark-bodied Shearwater.**
604. PUFFINUS TENUIROSTRIS TEMM.  
**Slender-billed Shearwater.**

605. CO  
**Lo**

605a. CO

606. CC  
**BE**

606a. C

607. CC

608. PC

608a. F

609. PC

610. P

611. P

612. P

613. F

CH



605. **COLYMBUS TORQUATUS** BRUNN.  
**Loon; Great Northern Diver.**
- 605a. **COLYMBUS TORQUATUS** BRUNN.,  
*var. ADAMSHI* (Gray) Coues.  
**Yellow-billed Loon.**
606. **COLYMBUS ARCTICUS** L.  
**Black-throated Diver.**
- 606a. **COLYMBUS ARCTICUS** L.,  
*var. PACIFICUS* (Lawr.) Coues.  
**Pacific Diver.**
607. **COLYMBUS SEPTENTRIONALIS** L.  
**Red-throated Diver.**
608. **PODICEPS OCCIDENTALIS** LAWR.  
**Western Grebe.**
- 608a. **PODICEPS OCCIDENTALIS** LAWR.,  
*var. CLARKII* (Lawr.) Coues.  
**Clarke's Grebe.**
609. **PODICEPS CRISTATUS** (L.) LATH.  
**Crested Grebe.**
610. **PODICEPS GRISEIGENA** (BODD.) GRAY,  
*var. HOLBÜLLI* (Reinh.) Coues.  
**Red-necked Grebe.**
611. **PODICEPS CORNUTUS** (GM.) LATH.  
**Horned Grebe.**
612. **PODICEPS AURITUS** (L.) LATH.,  
*var. CALIFORNICUS* (Heerm.) Coues.  
**American Eared Grebe.**
613. **PODICEPS DOMINICUS** (L.)  
**St. Domingo Grebe.**

614. P

615. A

616. U

617. E

618. I

618a.

619. J

620.

621.

622.

623.

624.

625.

614. **PODILYMBUS PODICEPS** (L.) LAWR.  
**Pied-billed Dabchick.**
615. **ALCA IMPENNIS** L.  
**Great Auk.**  
[Extinct ?]
616. **UTAMANIA TORDA** (L.) LEACH.  
**Razor-billed Auk.**
617. **FRATERCULA CORNICULATA** (NAUM.) GRAY.  
**Horned Puffin.**
618. **FRATERCULA ARCTICA** (L.) STEPH.  
**Common Puffin; Sea Parrot.**
- 618a. **FRATERCULA ARCTICA** (L.) STEPH.,  
*var. GLACIALIS* (Leach) COUES.  
**Large-billed Puffin.**
619. **FRATERCULA CIRRHATA** (PALL.) STEPH.  
**Tufted Puffin.**
620. **CERATORHINA MONOCERATA** (PALL.) CASS.  
**Horn-billed Auk.**
621. **PHALERIS PSITTACULA** (PALL.) TEMM.  
**Parroquet Auk.**
622. **SIMORHYNCHUS CRISTATELLUS** (PALL.) MERREM.  
**Crested Auk.**
623. **SIMORHYNCHUS CAMTSCHATICUS** (LEPECH.) SCHL.  
**Whiskered Auk.**
624. **SIMORHYNCHUS PUSILLUS** (PALL.) COUES.  
**Knob-billed Auk; Least Auk.**
625. **PTYCHORHAMPHUS ALEUTICUS** (PALL.) BRANDT.  
**Aleutian Auk.**

626. M

627. S

628. S

629. B

630. B

631. U  
**Blac**

632. U

633. U

634. I  
**C**

635. I

626. **MERGULUS ALLE** (L.) VIEILL.  
**Sea Dove; Dovekie.**
627. **SYNTHLIBORHAMPHUS ANTIQUUS** (GM.) BRANDT.  
**Black-throated Guillemot.**
628. **SYNTHLIBORHAMPHUS**  
**WURMIZUSUME** (TEMM.) COUES.  
**Temminck's Auk.**
629. **BRACHYRHAMPHUS MARMORATUS** (GM.) BRANDT.  
**Marbled Murrelet.**
630. **BRACHYRHAMPHUS KITTLITZII** BRANDT.  
**Kittlitz's Murrelet.**
631. **URIA GRYLLE** (L.) BRUNN.  
**Black Guillemot; Sea Pigeon.**
632. **URIA COLUMBA** (PALL.) CASS.  
**Pigeon Guillemot.**
633. **URIA CARBO** (PALL.) BRANDT.  
**Sooty Guillemot.**
634. **LOMVIA TROILE** (L.) BRANDT.  
**Common Guillemot; Murre.**
635. **LOMVIA ARRA** (PALL.) COUES.  
**Thick-billed Guillemot.**

1. UI

2. AQ

3. BU

4. ME

5. MI

6. MI

7. GI

8. G.

9. A

10. A

11. A

12. A

13. A

14. T

15. T

## EXTINCT SPECIES.

---

1. UINTORNIS LUCARIS MARSH.
2. AQUILA DANANA MARSH.
3. BUBO LEPTOSTEUS MARSH.
4. MELEAGRIS ANTIQUUS MARSH.
5. MELEAGRIS ALTUS MARSH.
6. MELEAGRIS CELER MARSH.
7. GRUS HAYDENI MARSH.
8. GRUS PROAVUS MARSH.
9. ALETORNIS NOBILIS MARSH.
10. ALETORNIS PERNIX MARSH.
11. ALETORNIS VENUSTUS MARSH.
12. ALETORNIS GRACILIS MARSH.
13. ALETORNIS BELLUS MARSH.
14. TELMATORNIS PRISCUS MARSH.
15. TELMATORNIS AFFINIS MARSH.

16. PA

17. PA

18. PA

19. SU

20. GR

21. GR

22. GR

23. GR

23bis.\*

24. IC

24bis.†

25. P

26. C

27. C

28. E

29. I

---

\* No

† No

*niher*

p. 101



16. *PALÆOTRINGA LITTORALIS* MARSH.
17. *PALÆOTRINGA VETUS* MARSH.
18. *PALÆOTRINGA VAGANS* MARSH.
19. *SULA LOXOSTYLA* COPE.
20. *GRACULUS IDAHENSIS* MARSH.
21. *GRACULAVUS VELOX* MARSH.
22. *GRACULAVUS PUMILUS* MARSH.
23. *GRACULAVUS ANCEPS* MARSH.
- 23bis.\* *GRACULAVUS AGILIS* MARSH.
24. *ICHTHYORNIS DISPAR* MARSH.
- 24bis.† *APATORNIS CELER* MARSH.
25. *PUFFINUS CONRADI* MARSH.
26. *CATARRACTES ANTIQUUS* MARSH.
27. *CATARRACTES AFFINIS* MARSH.
28. *HESPERORNIS REGALIS* MARSH.
29. *LAORNIS EDWARDSIANUS* MARSH.

---

\* Not in the Key. (Marsh, Am. Jour., Sci. and Arts, v, p. 230, March, 1873.)

† Not in the Key. This species, with No. 24, represents a new order, *Ichthyornithes*, of a new subclass, *Odontornithes*. (Marsh, Am. Jour., Sci. and Arts, v, p. 101, Feb., 1873.)

PREP  
the aut  
to cons  
author  
given r

One r  
the pri  
ascerta  
ties ha  
where  
presen  
nition  
those  
not ne

The  
in Dec  
1874,

No.  
No. 4  
No.

*canus*

APPENDIX  
CONTAINING  
ADDITIONS AND CORRECTIONS  
TO THE CHECK LIST.

---

PREPARED under circumstances of remote isolation which deprived the author of the advantage of certain works of reference he desired to consult, the CHECK LIST contains some names for which no authority is cited, and in a few instances a change of the authority given may be required.

One new species has been added to the North American fauna during the printing of the List; five additional known species have since been ascertained to occur in this country, and meanwhile several new varieties have been published after the impression had passed the page where they should respectively appear; these are brought into the present connection. Most of them appear entitled to varietal recognition; but in printing the names formally, for the convenience of those who may desire to use such names in labelling, the author must not necessarily be held to endorse them in every instance.

The body of the List was printed, and some early copies distributed, in Dec., 1873; but the publication of the volume was held over until 1874, to insert in the Appendix names then about being published.

---

No. 41? The query indicates a probability that this is a variety of No. 40, as held by Mr. Allen.

No. 46. The United States form constitutes a variety of true *mexicanus*. See Ridgway, Am. Nat., vii, 1873, 603.

No. 5  
bright s

No. 5  
Smiths  
place in

No.  
way, A  
by Mr  
by nam

No.  
vil, 18

No.  
assur  
No  
way,

[N  
612,

46. **CATHERPES MEXICANUS** (Sw.) Bd.,  
var. **CONSPERSUS** Ridg.

**White-throated Wren.**

No. 53a. The *pale* western *Eremophila*, not the same as the small bright southwestern var. *rufa*, may be distinguished as

- 53b. **EREMOPHILA ALPESTRIS** (Forst.),  
var. **LEUCOLÆMA** Coues.

**Prairie Lark.**

No. 55bis. The following species, a straggler from Asia, is in the Smithsonian Institution from St. Michael's, Alaska, and should take place in the list.

- [55bis.] **ANTHUS PRATENSIS** BECHST.

**Meadow Pipit.**

No. 68. The Pacific form is varetally distinguishable. See Ridgway, Am. Nat., vii, 1873, 606. The Floridan form, later distinguished by Mr. Ridgway as var. *obscurus*, seems hardly worthy of recognition by name.

- 68a. **HELMINTHOPHAGA CELATA** (Say) Bd.,  
var. **LUTESCENS** Ridg.

**Golden Orange-crowned Warbler.**

No. 88. On the Mississippi Valley form, see Ridgway, Am. Nat., vii, 1873, 606.

- 88a. **DENDRÆCA DOMINICA** (L.) Bd.,  
var. **ALBILORA** Bd.

**White-browed Yellow-throated Warbler.**

No. 99? The probability mentioned in the text may be regarded as assured.

No. 102. The Pacific form is varetally distinguishable. See Ridgway, Am. Nat., vii, 1873, 608.

- 102a. **MYIODIOTES PUSILLUS** (Wils.) Bp.,  
var. **PILEOLATA** (Pall.) Ridg.

**Pacific Flycatching Warbler.**

[No. 106.] According to Baird and Ridgway, Am. Nat., vii, 1873, 612, this should stand as *C. bahamensis*.

- [106.] **CERTHIOLA BAHAMENSIS** Reich.

**Honey Creeper.**

No. 13  
named (C  
not be n  
[No. 3  
validity  
Tristram  
varieties  
as *P. ca*

No. 1  
scribed  
merely  
var. *fu*  
No. 1  
" "  
species  
No.  
Cones,  
No.  
Florida

No.  
that *I*  
*cassin*  
Am. 1

No.  
latel  
pale

No. 135a. The *C. elegans* of Baird (not of Swainson) has been re-named *C. ludovicianus* var. *robustus*, a name which, however, it may not be necessary to adopt. (Am. Nat., vii, 1873, 609.)

[No. 138]? The query indicates that the determination of specific validity, cited and adopted in the Key, may have been made by Dr. Tristram on grounds held in the Key to constitute only geographical varieties; so that we may revert to the view of its original describer as *P. coccinea* var. *cassini* Bd.

[138.] **PYRRHULA COCCINEA,**

var. CASSINI Bd.

**Cassin's Bullfinch.**

No. 144. The *Leucosticte tephrocotis* var. *australis* Allen, lately described by Mr. Ridgway (Ess. Inst. Bull., v, 197), I believe to be merely the midsummer plumage of the ordinary bird, as my *Ægiothus* var. *fuscescens* probably is of *A. linaria*.

No. 155. For chestnut-colored read chestnut-collared.

" 157. Omit the query, which should have been affixed to the next species.

No. 157bis. To be cancelled. See Scott, Am. Nat., vii, 1873, 564; Coues, *ibid.*, p. 696.

No. 165. There is a curious small blackish form of this species from Florida, which has been distinguished (Bull. Ess. Inst., v, 198) as

165a. **AMMODROMUS MARITIMUS** Sw.,

var. NIGRESCENS Ridgw.

**Dusky Seaside Finch.**

No. 170a. Mr. Ridgway has lately demonstrated to my satisfaction that *Peucaea cassini* is a distinct species; the bird which I called "var. *cassini*" is a variety of *astivalis* which he proposes to call var. *arizonæ*. Am. Nat., vii, 1873, 616. So the species and varieties will stand:—

170a. **PEUCÆA ÆSTIVALIS** (LICHT.) CAB.,

var. ARIZONÆ Ridg.

**Arizona Pine Finch.**

170bis. **PEUCÆA CASSINI** (WOODH.) BD.

**Cassin's Pine Finch.**

No. 173. A very notable variety of *Poospiza belli*, from Nevada, has lately been characterized (Bull. Ess. Inst., v, 198). It is much larger, paler and grayer, with streaked interscapulars.

173a. **POOSPIZA BELLI** (CASS.) SCL.,

var. NEVADENSIS Ridg.

**Nevadan Finch.**

No. 17  
Key, p. 1  
1873, 616

Nos. 1  
noted in  
No. 18  
from wh  
Inst., v,

183

No. 2  
" 2  
*oryzivo*  
may no

No. 2  
" 2  
" 2  
" 2  
" 2

been d  
of the  
being  
should

2

No.  
from  
v, 199

C



No. 174. The form of *Junco* with white wing-bars, noted in the Key, p. 141, is named *J. hyemalis* var. *aikeni* Ridgway, Am. Nat., vii, 1873, 616. See also Pr. Bost. Soc., xv, 1872, p. 201.

174a. **JUNCO HYEMALIS (L.) Sci.,**

var. AIKENI Ridg.

**White-winged Snowbird.**

Nos. 175? 176? The queries indicate the gradation with No. 174 noted in the Key, p. 141.

No. 183a. The true *Z. leucophrys* var. *gambeli* is a Pacific coast form, from which the Middle Coast form has been distinguished (Bull. Ess. Inst., v, 198) as

183b. **ZONOTRICHIA LEUCOPHRYS (FORST.) Sw.,**

var. INTERMEDIA Ridgw.

**Ridgway's Sparrow.**

No. 206. For Canon read Cañon.

" 210. The prairie form has been characterized as *Dolichonyx oryzivorus* var. *albinucha* Ridg. (Bull. Ess. Inst., v, 198), a name it may not be necessary to adopt.

No. 216. For Dandin read Daudin.

" 220. For Girand read Giraud.

" 226. For Nuttallii read Nuttalli.

" 229a. For Gairdnerii read Gairdneri.

" 237. The question of synonymy left open in the Key, p. 166, has been determined (Bull. Ess. Inst., v, 199) as follows: "*A. sordida*" of the Key is a new variety, *arizonæ* of *ultramarina*, the true *sordida* being a Mexican variety of the same species. Accordingly, No. 237 should stand as

237. **APHELOCOMA ULTRAMARINA (BP.) CAB.,**

var. ARIZONÆ (Ridg.)

**Arizona Ultramarine Jay.**

No. 239. Two varieties of Canada jay, one from Alaska, the other from the Rocky Mountains, have lately been named (Bull. Ess. Inst., v, 199).

239a. **PERISOREUS CANADENSIS (L.) Bp.,**

var. OBSCURUS Ridg.

**Dusky Canada Jay.**

239b. **PERISOREUS CANADENSIS (L.) Bp.,**

var. CAPITALIS Bd.

**Rocky Mountain Jay.**

No. 27  
Mr. H.  
by Mr. J.  
press.)

No. 27  
" 28  
" 29  
" 30  
be rega  
ing cou

Nos.  
(Am. N  
*roides*  
of the  
examin  
dences  
sexual  
*thyroid*  
nyme.  
No.  
No.  
under

No.  
"  
"  
shoul

No.  
"  
"

No. 274bis. A fine species of humming bird has been discovered by Mr. H. W. Henshaw to inhabit Arizona, and has been determined by Mr. Lawrence to be *Eugenes fulgens*. (Am. Nat., viii, 1874, in press.)

274bis. **EUGENES FULGENS** (Sw.).

**Refulgent Hummingbird.**

No. 279. The authority is (LESS.) Bp.

" 281. The authority is (LESS.) GLD.

" 292. The authority is (LATR.) NUTT.

" 303? This species, queried in the text, and in Key, p. 195, may be regarded as a variety of 302, the intergradation, through 302a, proving complete. See Ridgway, Am. Jour., iv, Dec., 1872.

302b. **SPHYRAPICUS VARIUS** (L.) Bd.,

*var. RUBER* (Gm.) Ridg.

**Red-breasted Woodpecker.**

Nos. 304, 305. Observations lately made by Mr. H. W. Henshaw (Am. Nat., viii, 1874, in press) are to the effect that *Sphyrapicus thyroideus* is the female of *S. williamsoni*. The opposite sexes of each of these species have not been satisfactorily recognized, and upon examination of Mr. Henshaw's material, I find almost conclusive evidences in favor of his views, substantiating his observations. Such sexual differences are unique in the family. As the older name, *S. thyroideus* will stand for the species, *S. williamsoni* becoming a synonyme. No. 305 is therefore to be cancelled.

No. 307. The authority is (WAGL.) GRAY.

No. 318. A dark Floridan form of *Scops* has been characterized under the following name (Bull. Ess. Inst., v, 200) :—

318c. **SCOPS ASIO** (L.) Bp.,

*var. FLORIDANUS* Ridg.

**Floridan Screech Owl.**

No. 320. The authority is FLEMING.

" 321. The authority is (BECHST.) Bp.

" 322. The term *chinereum* has priority over *lapponicum*; the bird should stand as

322. **SYRNIUM CINEREUM** (Gm.) AUD.,

**Great Gray Owl.**

No. 327. The authority is (Gm.) Bp.

" 329. The authority is (L.) Bp.

" 330. The authority is (MAX.) KAUP.

Nos. 34:  
pigeon ha  
as follow

No. 35  
5 (Iowa)  
No. 38  
character  
than like  
tail.

No. 39  
character

No. 40  
(Am. N  
the bla

No. 41  
elisco b

No. 42

Nos. 343, 344. The dark northwest coast forms of duck hawk and pigeon hawk respectively have been named (Bull. Ess. Inst., v, 201) as follows:—

343a. **FALCO COMMUNIS** GM.,

var. PEALEI Ridg.

**Peale's Duck Hawk.**

344a. **FALCO COLUMBARIUS** L.,

var. SUCKLEYI Ridg.

**Suckley's Pigeon Hawk.**

No. 351c. The authority is HOOPES, Pr. Phila. Acad., 1873, 238, pl. 5 (Iowa).

No. 361. A dark form of *Tetrao obscurus*, from Sitka, has lately been characterized (Bull. Ess. Inst., v, 199): it is more like true *obscurus* than like var. *richardsoni*, having the broad terminal slate bar of the tail.

381b. **TETRAO OBSCURUS** SAY,

var. FULIGINOSA (Ridg.).

**Sitka Dusky Grouse.**

No. 384. A pale form of *Cupidonia*, from Texas, has lately been characterized (Bull. Ess. Inst., v, 199):—

384a. **CUPIDONIA CUPIDO** (L.) BD.,

var. PALLIDICINCTA Ridg.

**Texas Prairie Hen.**

No. 400. A variety of this species is described by Mr. Ridgway, (Am. Nat., viii, 1874, 109), as *A. melodus* var. *circumcinctus*, having the black pectoral band complete.

400a. **ÆGIALITIS MELODUS** (ORD) CAB.,

var. CIRCUMCINCTUS Ridg.

**Missouri Piping Plover.**

No. 400bis. A new species of *Ægialitis* is described from San Francisco by Mr. Ridgway (Am. Nat., viii, 1874, 109).

400bis. **ÆGIALITIS MICRORHYNCHUS** RIDG.

**Slender-billed Plover.**

No. 401. The American form of *Æ. cantianus* may be considered

varietally (d  
1874, 109).

40

No. 402\*,  
player is per  
in breeding  
black colour

402. B

No. 411a.  
name; "*M*  
*griseus*, su  
The range o  
ring in *Ere*

No. 442b  
Smithsonia  
by F. Bisset

No. 445.  
ordinary N  
of the Old  
Fulled St  
determina

No. 448  
tral Amer  
enter the

variety distinct from the European (see Ridgway, Am. Nat., viii, 1874, 109).

401. **AGIALITIS CANTIANUS** (LATH.),

*var. NIVOSUS* (CASS.) RIDGW.

**Snowy Plover.**

No. 402\*. As intimated in the text, the North American mountain plover is perfectly distinct from the Ashatic. I have only lately seen it in breeding dress: It has *no* black pectoral band, but a transverse black coronal belt and black loreal stripe.

402. **EUDROMIAS MONTANUS** (TOWNS.) HARTING.

**Mountain Plover.**

No. 411a. It is not necessary to recognize this even by varietal name; "*M. scotopaceus*" being merely longer-billed specimens of *M. griseus*, such as may be shot out of almost any flock of the latter. The range of variation in length of bill is no greater than that occurring in *Ereunetes pusillus*, as noted in the Key, p. 254.

No. 442bis. A well known Pacific curlew, before overlooked in the Smithsonian collection, was taken at Fort Renal, Alaska, May 18, 1869, by P. Biscoff, and should be added to the last as a straggler.

[442bis.] **NUMENIUS FEMORALIS** PEALE.

**Bristle-billed Curlew.**

No. 445. According to Mr. Ridgway (Am. Nat., viii, 1874, 110), the ordinary North American glossy ibis is absolutely identical with that of the Old World. He, however, finds two other species in western United States, *I. guarana* and *I. thalassinus*. According to this determination our species would stand as follows:—

445. **IBIS FALCINELLUS** Auct.

**Glossy Ibis.**

445bis. **IBIS GUARAUNA** (LINN.) RIDG.

**White-faced Ibis.**

445ter. **IBIS THALASSINUS** RIDG.

**Green Ibis.**

No. 448bis. I am informed by Prof. Baird that the Jabiru, of Central America, was taken some years since at Austin, Texas. It should enter the list as a straggler.

[448bis.] **MYCTERIA AMERICANA** L.

**Jabiru.**

No. 450  
No. 466  
(Am. Nat

No. 47  
Parallon

No. 47  
require

No. 4  
No. 4  
describ

No. 4  
from N  
No. 4  
from N  
No. 4  
*chelido*  
lein, an  
first in

[575bl

Cum



No. 450? For occasion of the query see Key, p. 267.

No. 466. A pale form is described from California. See Ridgway (Am. Nat., viii, 1874, 111).

466a. **RALLUS ELEGANS** AUD.,

var. OBSOLETUS Ridg.

**Californian Rail.**

No. 470. A peculiar variety of the black rail is described from the Farallones by Mr. Ridgway (Amer. Nat., viii, 1874, 111).

470a. **PORZANA JAMAICENSIS** (GM.) CASS.,

var. COTURNICULUS Bd.

**Pacific Black Rail.**

No. 472. The relationships of this form to the European *G. chloropus* require further investigation. It will probably stand as

472. **GALLINULA CHLOROPUS** LATH.,

var. GALEATA (Licht.) Hartl.

No. 479? Compare Key, p. 282.

No. 489. A lighter colored form of dusky duck, with a buff throat, is described from Florida (by Mr. Ridgway, l. c.), where it is resident.

489a. **ANAS OBSCURA** GM.,

var. FULVIGULA Ridg.

**Floridan Dusky Duck.**

No. 493? The query indicates probability of only varietal distinction from No. 492.

No. 501? The query indicates probability of only varietal distinction from No. 500.

No. 575bis. A specimen of the European white-winged tern, *Hydrochelidon leucoptera*, was taken in Wisconsin, July 5, 1873, by Th. Kumllein, and presented to the Smithsonian by Dr. Brewer. This is the first instance known of its occurrence in this country.

[575bis.] **HYDROCHELIDON LEUCOPTERA** (MELIS.) BOIE.

**White-winged Black Tern.**

