

**CIHM
Microfiche
Series
(Monographs)**

**ICMH
Collection de
microfiches
(monographies)**



Canadian Institute for Historical Microreproductions / Institut canadien de microreproductions historiques

© 1999

The copy filmed here has been reproduced thanks to the generosity of:

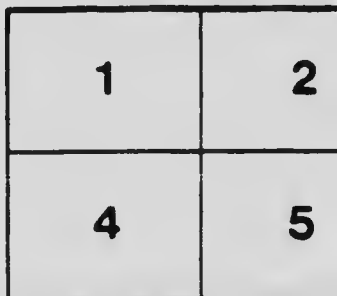
Archives of Ontario
Toronto

The images appearing here are the best quality possible considering the condition and legibility of the original copy and in keeping with the filming contract specifications.

Original copies in printed paper covers are filmed beginning with the front cover and ending on the last page with a printed or illustrated impression, or the back cover when appropriate. All other original copies are filmed beginning on the first page with a printed or illustrated impression, and ending on the last page with a printed or illustrated impression.

The last recorded frame on each microfiche shell contain the symbol \rightarrow (meaning "CONTINUED"), or the symbol ∇ (meaning "END"), whichever applies.

Maps, plates, charts, etc., may be filmed at different reduction ratios. Those too large to be entirely included in one exposure are filmed beginning in the upper left hand corner, left to right and top to bottom, as many frames as required. The following diagrams illustrate the method:



L'exemplaire filmé fut reproduit grâce à la générosité de:

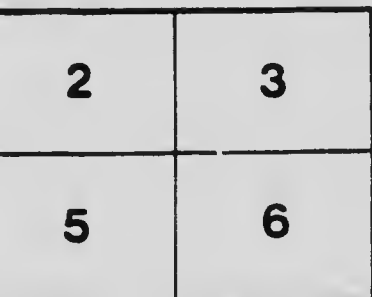
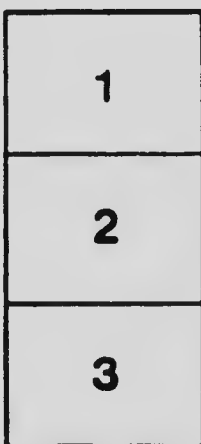
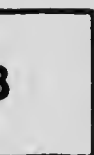
Archives publiques de l'Ontario
Toronto

Les images suivantes ont été reproduites avec le plus grand soin, compte tenu de la condition et de la netteté de l'exemplaire filmé, et en conformité avec les conditions du contrat de filmage.

Les exemplaires originaux dont la couverture en papier est imprimée sont filmés en commençant par le premier plat et en terminant soit par la dernière page qui comporte une empreinte d'impression ou d'illustration, soit par le second plat, selon le cas. Tous les autres exemplaires originaux sont filmés en commençant par la première page qui comporte une empreinte d'impression ou d'illustration et en terminant par la dernière page qui comporte une telle empreinte.

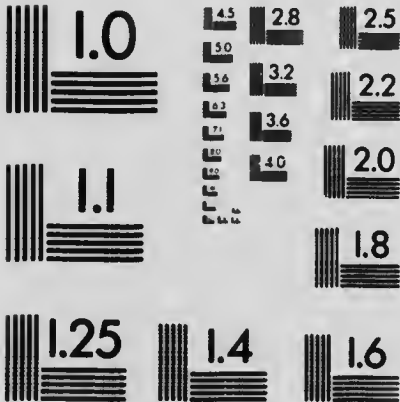
Un des symboles suivants apparaîtra sur la dernière image de chaque microfiche, selon le cas: le symbole \rightarrow signifie "A SUIVRE", le symbole ∇ signifie "FIN".

Les cartes, planches, tableaux, etc., peuvent être filmés à des taux de réduction différents. Lorsque le document est trop grand pour être reproduit en un seul cliché, il est filmé à partir de l'angle supérieur gauche, de gauche à droite, et de haut en bas, en prenant le nombre d'images nécessaire. Les diagrammes suivants illustrent la méthode.



MICROCOPY RESOLUTION TEST CHART

(ANSI and ISO TEST CHART No. 2)



APPLIED IMAGE Inc

1653 East Main Street
Rochester, New York 14609 USA
(716) 482 - 0300 - Phone
(716) 299 - 5989 - Fax

**EXHIBITION OF SMALL PAINTINGS
AND SKETCHES
BY MEMBERS OF THE
ONTARIO SOCIETY OF ARTISTS
OPENING ON OCTOBER 30th, 1920**

**THE ART GALLERY OF TORONTO
26 GRANGE ROAD**

CATALOGUE

□ □ □

Bell-Smith, F. M.

1	Mount MacDonald	\$50 00
2	Wet Day near Trafalgar Sq.	100 00
3	A Mountain Solitude	100 00
4	Looking down Piccadilly	100 00
5	Danbury Church, Essex	40 00
6	White Head, Portland	60 00

Brigden, F. H.

7	Spring in the Don Valley	75 00
8	Rapids on the Kenogami	75 00
9	A Stillwater	75 00
10	A Northern Stream	75 00
11	A Lake in the Wilderness	75 00
12	A Mountain Brook	75 00

Britton, Harry

13	Twilight	50 00
14	Volendam Harbor	30 00
15	Street in St. Ives	30 00
16	April in Cornwall	50 00
17	Winter Sketch	40 00
18	The Wave	35 00

Carmichael, Frank

19	Sketch	35 00
20	Sketch	35 00
21	Sketch	35 00
22	Sketch	35 00
23	Sketch	35 00
24	Sketch	35 00

Challener, F. S.

25	The Mermaid	75 00
26	A Scotch Lassie	100 00
27	Farm Horses at a Stream	150 00
28	Sea Shells	75 00
29	Studio Interior	100 00
30	The Forging Place	150 00

Ford, Harriet

31	The Piazzetta	50 00
32	A Side Canal, Venice	25 00
33	The Black Barn	30 00
34	Landscape in Provence	25 00
35	Study of Head	25 00

Gagen, Robt. F.

36	At Grand Manan
37	Monhegan Headland
38	Gloucester Rocks
39	Off Pemequid Point
40	Sea Spume

Greene, T. G.

41	Northern Waters
42	Northland Rock
43	Rice Beds
44	Last of the Snow
45	Lake Simcoe
46	Mid-October

Hagarty, Clara S.

47	Remnants of Summer
48	Flowers
49	Spring in Toronto
50	Luxemburg Garden

Harris, Lawren

51	Sketch
52	Sketch
53	Sketch
54	Sketch
55	Sketch
56	Sketch

Haines, Fred S.

57	Evening
58	The Lonely Road
59	Afternoon
60	Nellie
61	Elms

Holmes, Robert

62	Pumpkin Flower
63	Pumpkin Flower
64	Wild Rose
65	Prince's Pine
66	Calypso

Jackson, A. Y.

67	Melting Snow
68	A March Morning
69	Cedars
70	Winter in the W
71	Early Spring, Ge
72	Evening, Algoma

McGillivray, F. H.

112	A Fisherman's Hut, Labrador.....	\$100 00
113	A Bit of Skalway.....	50 00
114	Percé Rock from Church Hill.....	50 00
115	Les Chats Falls, Fitzroy Harbor..	25 00
116	Broom Bloom.....	25 00
117	Cloud Movement, Alaska.....	25 00

Mitchell, Thomas W.

118	The Month of May.....	35 00
119	A Windy Day.....	35 00

MacDonald, Manly

120	The Open River.....	40 00
121	Harbor, Evening.....	30 00
122	Along the River.....	40 00
123	The Blue Bay.....	30 00
124	Winter, Evening.....	25 00
125	The Saw Mill.....	25 00

Palmer, Herbert S.

126	An Old Fashioned Bouquet.....	35 00
127	Autumn Meadows.....	50 00
128	October Pasture.....	30 00
129	Goats on the Hill Top.....	25 00
130	In the Goat Pasture.....	25 00
131	Winter, Humber Valley.....	25 00

Reid, G. A.

132	Dawn.....	100 00
133	The Woodland Pasture.....	100 00
134	Summer.....	75 00
135	The Path.....	75 00
136	The Old Orchard.....	40 00
137	The Pasture.....	40 00

Reid, Mary H.

138	After Sunset.....	100 00
139	Blossoms.....	50 00
140	The Terrace.....	80 00
141	Early Spring.....	50 00
142	Pansies.....	40 00

Staples, Owen

143	Autumn, Georgian Bay.....	75 00
144	Poppies.....	25 00
145	Turk's Cap Lily.....	25 00

Sheppard, Peter C.

146	Old Hay Barges, Montreal.....	25 00
147	The Mill.....	25 00

Sheppard, Peter C.—Continued

148	The Hills of Oka, Quebec.	\$25 00
149	Old Barn.....	25 00
150	Patience.....	25 00
151	Summer Afternoon.....	25 00

Varley, F. H.

152	Georgian Bay, Sketch.....	100 00
153	Georgian Bay, Sketch.....	50 00
154	Georgian Bay, Sketch.....	50 00
155	Georgian Bay, Sketch.....	50 00
156	Georgian Bay, Sketch.....	50 00
157	Georgian Bay, Sketch.....	50 00

Wrench, Mary H.

158	Poppies and Clematis.....	45 00
159	Wolfesfield Garden, Quebec.....	45 00
160	Approach to the Pasilica, Quebec.	40 00
161	River, Ste. Anne.....	45 00
162	Cape Blomidon Minas Basin....	45 00
163	Sunset Light on Ste. Anne de Beaupre.....	35 00





