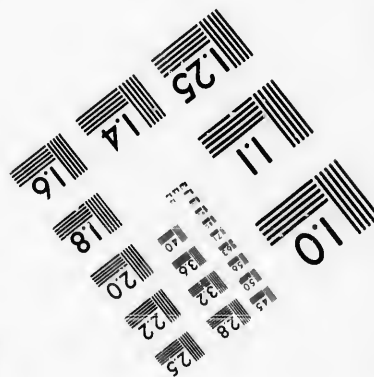
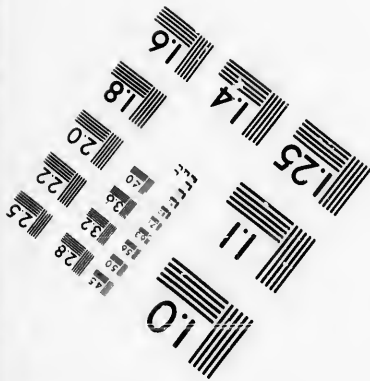
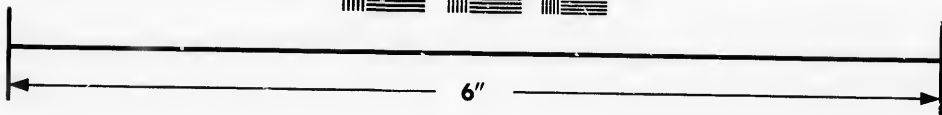
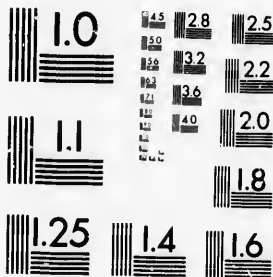


**IMAGE EVALUATION  
TEST TARGET (MT-3)**



**Photographic  
Sciences  
Corporation**

23 WEST MAIN STREET  
WEBSTER, N.Y. 14580  
(716) 872-4503

**CIHM/ICMH  
Microfiche  
Series.**

**CIHM/ICMH  
Collection de  
microfiches.**



Canadian Institute for Historical Microreproductions / Institut canadien de microreproductions historiques

**© 1986**

Technical and Bibliographic Notes/Notes techniques et bibliographiques

The Institute has attempted to obtain the best original copy available for filming. Features of this copy which may be bibliographically unique, which may alter any of the images in the reproduction, or which may significantly change the usual method of filming, are checked below.

L'Institut a microfilmé le meilleur exemplaire qu'il lui a été possible de se procurer. Les détails de cet exemplaire qui sont peut-être uniques du point de vue bibliographique, qui peuvent modifier une image reproduite, ou qui peuvent exiger une modification dans la méthode normale de filmage sont indiqués ci-dessous.

- |  |  |
|--|--|
| <input type="checkbox"/> Coloured covers/<br>Couverture de couleur   | <input type="checkbox"/> Coloured pages/<br>Pages de couleur   |
| <input type="checkbox"/> Covers damaged/<br>Couverture endommagée  | <input checked="" type="checkbox"/> Pages damaged/<br>Pages endommagées  |
| <input type="checkbox"/> Covers restored and/or laminated/<br>Couverture restaurée et/ou pelliculée  | <input type="checkbox"/> Pages restored and/or laminated/<br>Pages restaurées et/ou pelliculées  |
| <input type="checkbox"/> Cover title missing/<br>Le titre de couverture manque   | <input checked="" type="checkbox"/> Pages discoloured, stained or foxed/<br>Pages décolorées, tachetées ou piquées   |
| <input type="checkbox"/> Coloured maps/<br>Cartes géographiques en couleur   | <input type="checkbox"/> Pages detached/<br>Pages détachées  |
| <input type="checkbox"/> Coloured ink (i.e. other than blue or black)/<br>Encre de couleur (i.e. autre que bleue ou noire)   | <input checked="" type="checkbox"/> Showthrough/<br>Transparence   |
| <input type="checkbox"/> Coloured plates and/or illustrations/<br>Planches et/ou illustrations en couleur  | <input type="checkbox"/> Quality of print varies/<br>Qualité inégale de l'impression   |
| <input type="checkbox"/> Bound with other material/<br>Relié avec d'autres documents   | <input type="checkbox"/> Includes supplementary material/<br>Comprend du matériel supplémentaire   |
| <input type="checkbox"/> Tight binding may cause shadows or distortion<br>along interior margin/<br>La reliure serrée peut causer de l'ombre ou de la<br>distorsion le long de la marge intérieure   | <input type="checkbox"/> Only edition available/<br>Seule édition disponible   |
| <input type="checkbox"/> Blank leaves added during restoration may<br>appear within the text. Whenever possible, these<br>have been omitted from filming/<br>Il se peut que certaines pages blanches ajoutées<br>lors d'une restauration apparaissent dans le texte,<br>mais, lorsque cela était possible, ces pages n'ont<br>pas été filmées. | <input type="checkbox"/> Pages wholly or partially obscured by errata<br>slips, tissues, etc., have been refilmed to<br>ensure the best possible image/<br>Les pages totalement ou partiellement<br>obscurcies par un feuillet d'errata, une pelure,<br>etc., ont été filmées à nouveau de façon à<br>obtenir la meilleure image possible. |
| <input checked="" type="checkbox"/> Additional comments:/ [Printed ephemera] [4] p.<br>Commentaires supplémentaires:   |  |

This item is filmed at the reduction ratio checked below/  
Ce document est filmé au taux de réduction indiqué ci-dessous.

10X	14X	18X	22X	26X	30X
<input type="checkbox"/>	<input type="checkbox"/>	<input type="checkbox"/>	<input checked="" type="checkbox"/>	<input type="checkbox"/>	<input type="checkbox"/>
12X	16X	20X	24X	28X	32X

The copy filmed here has been reproduced thanks to the generosity of:

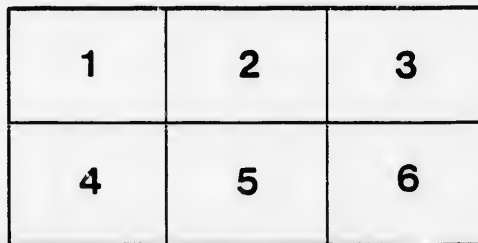
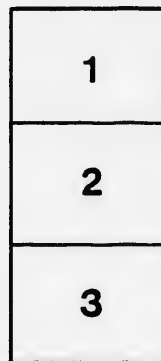
D. B. Weldon Library  
University of Western Ontario  
(Regional History Room)

The images appearing here are the best quality possible considering the condition and legibility of the original copy and in keeping with the filming contract specifications.

Original copies in printed paper covers are filmed beginning with the front cover and ending on the last page with a printed or illustrated impression, or the back cover when appropriate. All other original copies are filmed beginning on the first page with a printed or illustrated impression, and ending on the last page with a printed or illustrated impression.

The last recorded frame on each microfiche shall contain the symbol  $\rightarrow$  (meaning "CONTINUED"), or the symbol  $\nabla$  (meaning "END"), whichever applies.

Maps, plates, charts, etc., may be filmed at different reduction ratios. Those too large to be entirely included in one exposure are filmed beginning in the upper left hand corner, left to right and top to bottom, as many frames as required. The following diagrams illustrate the method:



L'exemplaire filmé fut reproduit grâce à la générosité de:

D. B. Weldon Library  
University of Western Ontario  
(Regional History Room)

Les images suivantes ont été reproduites avec le plus grand soin, compte tenu de la condition et de la netteté de l'exemplaire filmé, et en conformité avec les conditions du contrat de filmage.

Les exemplaires originaux dont la couverture en papier est imprimée sont filmés en commençant par le premier plat et en terminant soit par la dernière page qui comporte une empreinte d'impression ou d'illustration, soit par le second plat, selon le cas. Tous les autres exemplaires originaux sont filmés en commençant par la première page qui comporte une empreinte d'impression ou d'illustration et en terminant par la dernière page qui comporte une telle empreinte.

Un des symboles suivants apparaîtra sur la dernière image de chaque microfiche, selon le cas: le symbole  $\rightarrow$  signifie "A SUIVRE", le symbole  $\nabla$  signifie "FIN".

Les cartes, planches, tableaux, etc., peuvent être filmés à des taux de réduction différents. Lorsque le document est trop grand pour être reproduit en un seul cliché, il est filmé à partir de l'angle supérieur gauche, de gauche à droite, et de haut en bas, en prenant le nombre d'images nécessaire. Les diagrammes suivants illustrent la méthode.

*Fairbank, Sept 16-21*

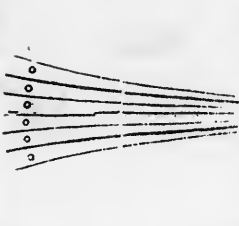
# London Music Hall TO-NIGHT.

— LAST APPEARANCE OF —

## J. L. CLARK

.....AND HIS EXCELLENT COMPANY.....

— OF —



Actors, Singers,  
Dancers *and* . . .  
. . . Comedians

— SUPPORTING —

### MISS ELLA CAMERON

✦ In a Brilliant Repertoire of  
Standard Successes. ✦

POPULAR PRICES, 10c., 20c. and 30c.

*"Clark, in his Black Face Farces, are worth going miles to see."—Boston Globe.*

The Old Mechanics Hall, now the London Music Hall, refitted and rejuvenated, will present a brilliant appearance on the opening night.

Advertiser Printing Co.



# BROWN

...145 Dundas Street.

Latest New York Styles....

—IN—

Ladies' *and* Gents' Footwear.



**High Quality, Complete Assortment, Low Prices.**

*IF YOU WANT A BETTER QUALITY AT A LOWER PRICE,  
COME TO OUR STORE*

*Our New Stock affords great attractions to buyers  
who can appreciate superior goods.....*



**Boots, Shoes, Rubbers, Etc.**

TELEPHONE 861.

SEE OUR WINDOWS.



## IF YOU WANT



- A Nobby Scarf,
- A Fine Umbrella,
- A Good Dress Shirt,
- A Comfortable Slumber Robe,
- A Pair of Gallows,
- The Best of Undergarments,
- The Latest and Swellest Collars

OR \_\_\_\_\_

**To be the Best Dressed Man in the City!**

You Must.... Patronize **Burns** The Outfitter,  
154 Dundas St.

## PROGRAMME.

# SNARES OF NEW YORK

### ❖ CAST. ❖

GORDON MAXWELL,	J. L. CLARK
MR. MAYBURY,	HARRY BRONRIDGE
FRANK LINDLEY,	GEORGE HEATH
SKATE MCGILLAN,	WILLIAM THORN
OLD HOMER,	NEIL TWOMEY
SEBRETASCHE,	EZRA B. BOOTH
TEDDY MULLIGAN,	DAVE LAWRENCE
OLD RAFFERTY,	MISS H. BRONRIDGE
ATHLIE MONELLI,	T. F. NORTON
BIDDY MULLIGAN,	MISS WITTING
KIT	
—AND—	
RUTH MAYBURY,	<b>MISS ELLA CAMERON</b>

### ❖ SYNOPSIS. ❖

ACT I.—The old warehouse of Maybury & Lindley. Friends. Villainy. Murder.

ACT II.—Old Marm Mulligan's boarding house. The wedding bells are ringing. Friends meet again. An Irish welcome to all. Back from the grave. The police. Old Rafferty to the rescue.

ACT III.—Fall river wharf at New York. The plot. The murderers appear. Steamer "Puritan." The murder in the stateroom. Thrown into the sound. The Lighthouse.

ACT IV.—Lindley's flat in New York City. The strange guests. Trouble brewing. No escape. Villainy punished. Good triumphant.

*The whole to conclude with Clark's Funniest of all Black Face Farces,*

**" 3 o'Clock Train."**

WILLIAM HENRY BROWN,

J. L. CLARK

# SEE

Long Island Sound by Night.  
The Steamer "Puritan," 75 feet long.  
The Great Duel Scene.  
The Singers and Dancers.

❖ DON'T FORGET THE LOW PRICES. ❖

**Chilropodists Starve to Death in London!**

**Know the Reason Why?**

People buy their Shoes of COOK; corns and bunions are unknown to those who wear his shoes. . . . .

**J. P. COOK,**

173 Dundas Street, - London, Ont.

YOUR MONEY BACK IF YOU WANT IT.

**WM. WYATT & SON**

—DEALERS IN—

**Stoves, & Furnaces**

—AND—

HOUSE FURNISHING GOODS,

364 Richmond Street.

New Styles and Shapes

—IN—

NEW YORK

**HATS**

Just to hand.

**MILNE,  
SPITTAL  
& CO.**

REMEMBER THE NAME.

**J. GAMMAE & SONS**

...ARE...



...AT...

213 Dundas Street.

New, Bright and Sparkling. . . .

**New Fall Goods**

**HARRY LENOX**

Merchant Tailor,

Cor. Richmond & Carling Sts

Go and see Harry.

Remember, Boys,

**BOB McINTYRE**

Is still in the

**Grigg House  
Barber Shop.**

Go and see him.

**JOHNSTON BROS.**

Merchant Tailors,

443 Richmond St 2nd door south of Post Office.

**NEW FALL GOODS**

of latest designs, in suitings overcoatings and trouserings.

To give your order early, will secure the best patterns.

And oblige, yours truly,

**JOHNSTON BROS.**

**CONTINUED!**



The sale of . . . . .  
10c. CIGARS for 5c.  
Is still going on at

**JOE NOLAN'S**

Where you can get  
All leading brands of

CIGARS, TOBACCOS, PIPES, Etc.

**OPERA CIGAR STORE**

Masonic Temple,  
Richmond Street.

**SCANDRETT**

**BROS.**

**Wholesale Grocers**

WINE & SPIRIT MERCHANTS,

175 and 177 Dundas St. . . .

'Phone 483.

LONDON, ONT.

**Strong's...**

**Baking Powder**

LEADS, OTHERS FOLLOW!

25c. PER POUND

—AT—

**STRONG'S DRUG STORE,**

184 Dundas Street.



