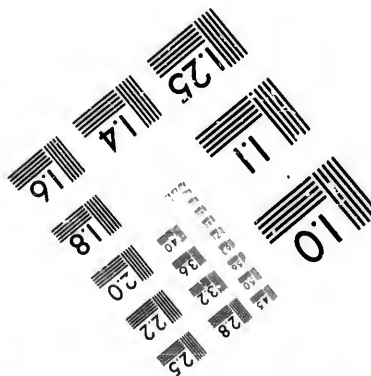
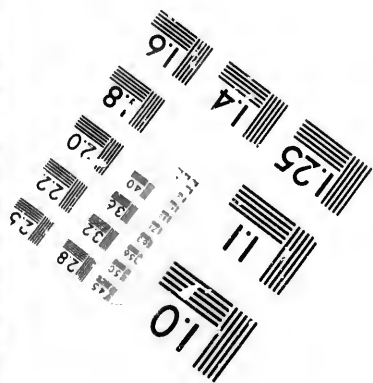
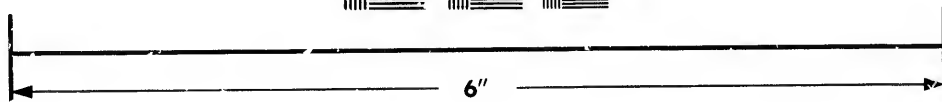
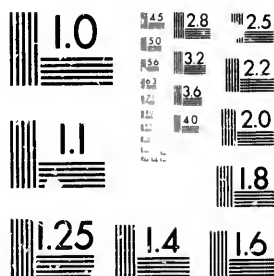


**IMAGE EVALUATION
TEST TARGET (MT-3)**



**Photographic
Sciences
Corporation**

23 WEST MAIN STREET
WEBSTER, N.Y. 14580
(716) 872-4503

**CIHM/ICMH
Microfiche
Series.**

**CIHM/ICMH
Collection de
microfiches.**



Canadian Institute for Historical Microreproductions / Institut canadien de microreproductions historiques

© 1981

The copy filmed here has been reproduced thanks to the generosity of:

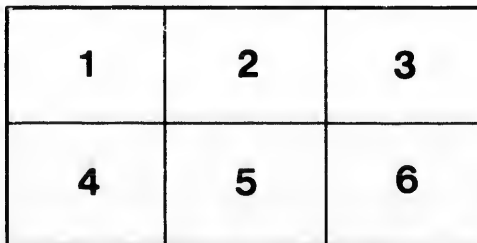
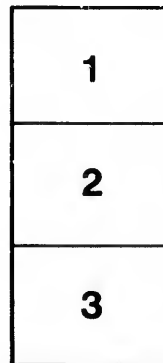
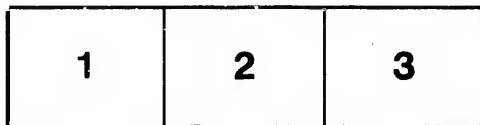
Library of the Public
Archives of Canada

The images appearing here are the best quality possible considering the condition and legibility of the original copy and in keeping with the filming contract specifications.

Original copies in printed paper covers are filmed beginning with the front cover and ending on the last page with a printed or illustrated impression, or the back cover when appropriate. All other original copies are filmed beginning on the first page with a printed or illustrated impression, and ending on the last page with a printed or illustrated impression.

The last recorded frame on each microfiche shall contain the symbol \rightarrow (meaning "CONTINUED"), or the symbol ∇ (meaning "END"), whichever applies.

Maps, plates, charts, etc., may be filmed at different reduction ratios. Those too large to be entirely included in one exposure are filmed beginning in the upper left hand corner, left to right and top to bottom, as many frames as required. The following diagrams illustrate the method:



L'exemplaire filmé fut reproduit grâce à la générosité de:

La bibliothèque des Archives
publiques du Canada

Les images suivantes ont été reproduites avec le plus grand soin, compte tenu de la condition et de la netteté de l'exemplaire filmé, et en conformité avec les conditions du contrat de filmage.

Les exemplaires originaux dont la couverture en papier est imprimée sont filmés en commençant par le premier plat et en terminant soit par la dernière page qui comporte une empreinte d'impression ou d'illustration, soit par le second plat, selon le cas. Tous les autres exemplaires originaux sont filmés en commençant par la première page qui comporte une empreinte d'impression ou d'illustration et en terminant par la dernière page qui comporte une telle empreinte.

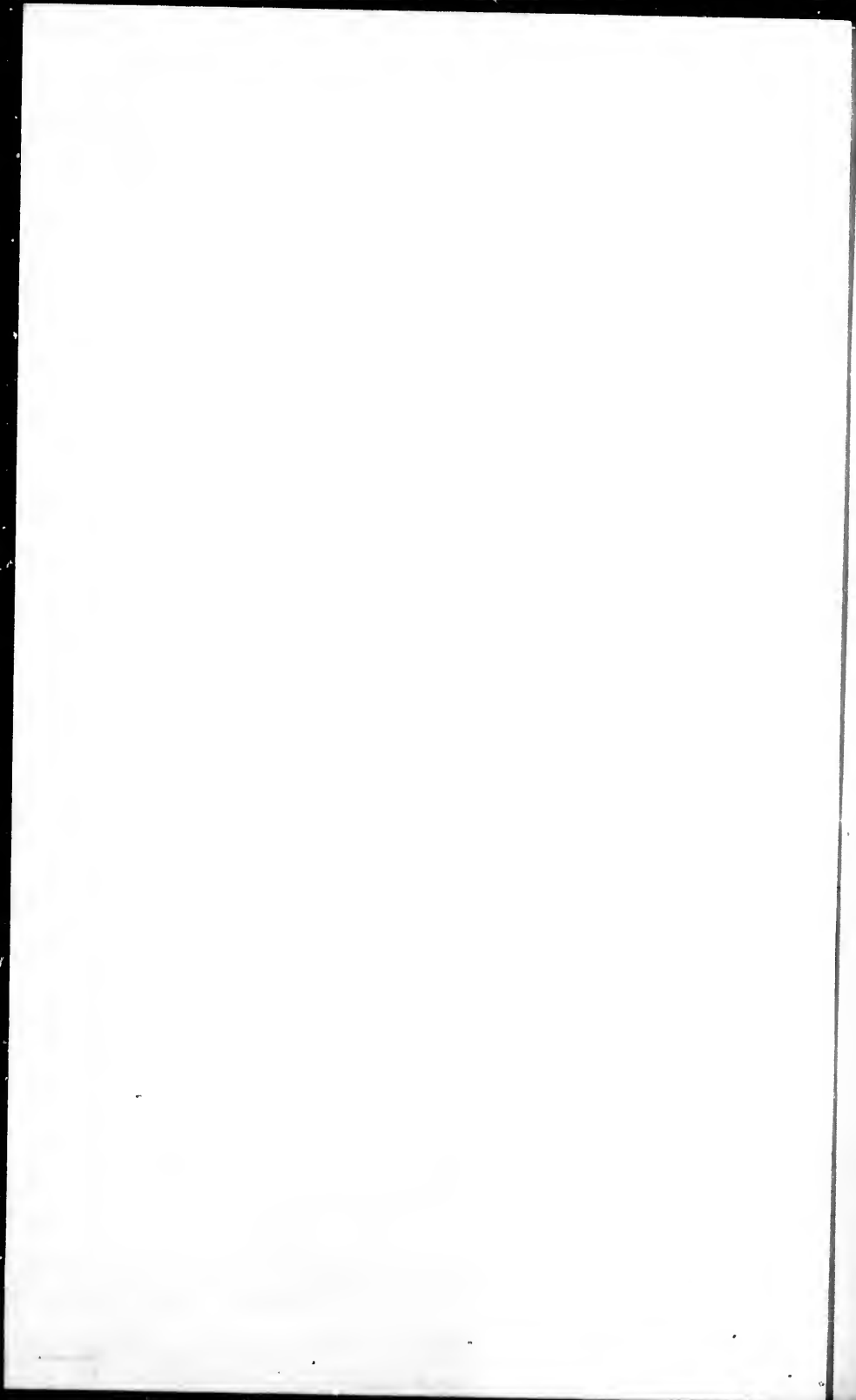
Un des symboles suivants apparaîtra sur la dernière image de chaque microfiche, selon le cas: le symbole \rightarrow signifie "A SUIVRE", le symbole ∇ signifie "FIN".

Les cartes, planches, tableaux, etc., peuvent être filmés à des taux de réduction différents. Lorsque le document est trop grand pour être reproduit en un seul cliché, il est filmé à partir de l'angle supérieur gauche, de gauche à droite, et de haut en bas, en prenant le nombre d'images nécessaire. Les diagrammes suivants illustrent la méthode.

ails
du
difier
une
nage

rata
o

elure,
à



Amount of ...
...



PRICE ONE DOLLAR.

P

PUB

HUNTER & CHISHOLM'S
PANORAMIC GUIDE

FROM

NIAGARA FALLS TO QUEBEC.

By WM. S. HUNTER, Jr.



Montreal:
PUBLISHED BY C. R. CHISHOLM,
RAILWAY AND STEAMBOAT NEWS AGENT.

PRINTED BY JOHN LOVELL, ST. NICHOLAS STREET.
1867.

STANDARD & METZGER

WILLIAM W. METZGER

1-3462

T
lon
Nia
ture
poi
thro
pen
and
anc
ever
reg
Pan
A
trate
by c
nec
town

P R E F A C E .

THE following work is intended to supply what has long appeared a desideratum to the tourist who visits Niagara and the St. Lawrence,—a Panoramic or Picture Map of all the most celebrated and picturesque points along this noble river. The Author has, through a variety of difficulties and at great expense, finished the work which he contemplated; and however great may have been the task, the assurance and encouragement of many friends give him every reason to believe, that he will have no cause to regret the attempt of bringing before the public his Panoramic Guide from Niagara to Quebec.

As the country embraced in the range of his illustrated scenery has been fully explored and noticed by other travellers, the Author has not deemed it necessary to add long descriptions of the different towns and villages to his work. He trusts that his

Panorama itself will be found sufficient, mainly, for the object in view: viz., that of condensing much important matter within a very small space. In the selection of materials for description, he has, in addition to his own observations, availed himself of the various reliable sources of information to which he has had access. He has made free use of an excellent work, published in the form of a Hand-book, by R. W. S. Mackay, Esq.

To difference of taste, and a necessary limit to the extent of the work, must be assigned any apparent omissions, which those conversant with the scenery of the St. Lawrence may observe.

STANSTEAD, C. E., Oct. 25, 1856.

T
sens
thos
circ
conf
dista
of w

W
spec
is so
woul
the l
lived
Dani
voic
chor
duce
comp
diapa
maje
pipes
TH

HUNTER'S PANORAMIC GUIDE.

APPROACH TO NIAGARA.

THE traveller in his first visit to this place is impressed with a sense of inexpressible amazement. His emotions are not unlike those of the votary of necromancy, who, when once within the magic circle, trembles under the influence of the enchanter, even before he confronts the wizard himself. A low sound, like the pealing of distant thunder, tells him plainly that he is approaching the wonder of wonders, THE FALLS OF NIAGARA!

HORSE SHOE FALL.

Who can forget his first view of this grand and stupendous spectacle? The roaring is so tremendous, that it would seem that if all the lions that ever have lived since the days of Daniel, could join their voices in one "Hullah's" chorus, they would produce but a whisper, in comparison to the deep diapason of this most majestic of all nature's pipes or organs.



HORSE SHOE FALL.

The wooden bridge which connects the mainland with Goat Island



HORSE SHOE FALLS—FROM CANADA SIDE.

HORSE SHOE FALLS—FROM THE AMERICAN SIDE

HORSE SHOE FALLS—FROM THE AMERICAN SIDE



HORSE SHOE FALLS—FROM CANADA SIDE.

is eagerly passed, and we explore the whole of this curious crag, which is rightly named, for it is found fantastically enough to suggest



THE RAPIDS.

that goats only could find a comfortable footing. The sublimity of the scene increases at every step; but when we come upon the mighty Cataract, we gaze in speechless wonder. But words cannot describe the grandeur of this scene, nor the emotions which it excites; neither can the pencil,

any more than the pen, do it justice. The silent and the still picture wants the motion and the sound of that stupendous rush of waters. It is impossible to paint the ever rising column of spray that spires upward from the foaming gulf below, or the prismatic glory that crowns it; for there indeed has God forever "set his bow" in the cloud, and cold must be the heart that in such a scene remembers not his covenant.

As neither descriptive language nor pictorial art can give an adequate conception of the magnitude of this wondrous Cataract, some notion may be suggested of the immense volume of water falling over the precipice, when it has been computed to be nearly 20,000,000 cubic feet per minute, in the Horse Shoe Fall alone; to say nothing of the Fall on the American side. The Horse Shoe Fall is 1900 feet across, and 158 feet in height; the American Fall is 908 feet wide, and 164 feet high. It is calculated that those Falls recede at the rate of a foot every year. It is here that the beautiful phenomenon of the rainbow is seen to such advantage

TABLE ROCK.

This is truly a magnificent crag, — the projection at the top being immense, from which large masses are often falling. Many accidents have happened to tourists venturing too near the precipice. A small steamer, called "The Maid of the Mist," plies up and down the river, for two or three miles, and ventures even close under the Falls. Some travellers are also fond of dressing themselves in tarpaulin clothing, and going behind the projection of the impending



TABLE ROCK—NIAGARA FALLS.

cliff, behind the mighty Fall ; but the danger is, we consider, far too great for the mere sake of saying that we have been under Niagara. The Table Rock, however, exists now but in memory, for it suddenly fell some years ago. Had this accident occurred an hour or two earlier in the day, the Victoria Bridge, the Grand Trunk Railway, and all other Canadian undertakings thereunto pertaining, would be a dream of the future, and not a substantiality of the present ; for a very short time previous to the disappearance of the slippery granite, there were standing upon it, viewing the Falls, the engineer of the Bridge, and several of his colleagues in the enterprises that have been mentioned.



ENTRANCE TO THE CAVE
OF THE WINDS.

About three miles below the Falls is a frightfully wild spot, called the Whirlpool. The ravine is termed the Bloody Run, from a sanguinary engagement between two hostile Indian tribes. No human effort could possibly rescue the unfortunate individual who should happen to become entangled in the eddies of this pool.



It is supposed that there is a subterraneous current from this spot. Between it and the Falls there was a temporary suspension bridge ; but it has been superseded by a stronger one for the Great Western Railway of Canada. Close to the Falls is a very fine hotel, situated on the Canadian side, from whence the two Falls may be seen to great advantage ; although the choicest point of view we consider to be above the Falls altogether. Nothing can exceed the grandeur of the view here ; and, to repeat a former remark, no art or description can fully realize the beauty and sublimity of the scene.

THE DEVIL'S HOLE

is a large triangular chasm in the bank of the river, three and a half miles below the Falls. The Bloody Run, as previously mentioned, falls into this chasm.

The following tale will, we think, be read with interest, in connection with Niagara.

THE HERMIT OF THE FALLS.

About twenty-five years since, in the glow of early summer, a young stranger of pleasing countenance and person made his appearance at Niagara. It was at first conjectured that he was an artist, a large portfolio, with books and musical instruments, being among his baggage. He was deeply impressed with the majesty and sublimity of the Cataract and the surrounding scenery, and expressed an intention to remain a week, that he might survey them at his leisure. But the fascination, which all minds of sensibility feel in the presence of that glorious work of the Creator, grew strongly upon him, and he was heard to say that six weeks were insufficient to become acquainted with its beauties. At the end of that period he was still unable to tear himself away, and desired to "build there a tabernacle," that he might indulge in his love of solitary musings, and admire at leisure the sublimity of nature. He applied for a spot on the Three Sisters' Island, on which to erect a cottage after his own model; one of the peculiarities of which was a draw-bridge, to insure isolation. Circumstances forbidding compliance with this request, he took up his residence in an old house on Iris Island, which he rendered as comfortable as the state of the case would admit. Here he remained about eighteen months, when the intrusion of a family interrupted his habits of seclusion and meditation. He then quietly withdrew, and reared for himself a less commodious habitation near Prospect Point. When winter came, a cheerful fire of wood blazed upon the hearth, and he beguiled the long hours of evening by reading and music. It was strange to hear, in such a solitude, the long-drawn, thrilling notes of the viol,

or the softest melody of the flute, gushing forth from that low-browed hut, or the guitar breathing out so lightly amid the rush and thunder of the never slumbering torrent. Though the world of letters was familiar to his mind, and the living world to his observation, for he had travelled widely, both in his native Europe and the East, he sought not association with mankind, to unfold or to increase his stores of knowledge. Those who had occasionally conversed with him, spoke with equal surprise and admiration of his colloquial powers, his command of language, and his fervid eloquence; but he seldom and sparingly admitted this intercourse, studiously avoiding society; though there seemed in his nature nothing of misanthropy or moroseness. On the contrary, he showed kindness to even the humblest animals. Birds instinctively learned this amiable trait in his character, and freely entered his dwelling, to receive from his hands crumbs or seeds.

But the absorbing delight of his solitary residence, was communion with Niagara. Here he might be seen at every hour of the day or night, a fervent worshipper. At the gray dawn he went to visit it in the vail of mist; at noon, he banqueted in the full splendor of its glory; beneath the soft tinting of the lunar bow he lingered, looking for the angel whose pencil had painted it; and, at solemn midnight, he knelt at the same shrine. Neither the storms of autumn, nor the piercing cold of winter, prevented his visits to the temple of his adoration. There was, at this time, an extension of the Scrapin Bridge, by a single beam of timber, carried out ten feet over the fathomless abyss, where it hung tremulously, guarded only by a rude parapet. Along this beam he often passed and re-passed, in the darkness of night. He even took pleasure in grasping it with his hands, and thus suspending himself over the awful gulf; so much had his morbid enthusiasm taught him to revel amid the terribly sublime. Among his favorite gratifications, was that of bathing, in which he indulged daily.

One bright but rather chilly day in the month of June, 1831, a man, employed about the ferry, saw him go into the water, and for a long time after observed his clothes to be still lying upon the bank. The poor hermit had taken his last bath. It was supposed that

cramp might have been induced by the chill of the atmosphere or the water. Still the body was not found, the depth and force of the current below being exceedingly great. In the course of their search, they passed on to the Whirlpool. There, amid those boiling eddies, was the body, making fearful and rapid gyrations upon the face of the black waters. At some point of suction, it suddenly plunged and disappeared. Again emerging, it was fearful to see it leap half its length above the flood, then float motionless, as if exhausted, and, anon, spring upward, and seem to struggle like a maniac battling with a mortal foe. For days and nights this terrible scene was prolonged. It was not until the 21st of June, that, after many efforts, they were able to recover the body, and bear it to his desolate cottage. There they found his faithful dog, guarding the door. Heavily had the long period worn away, while he watched for his only friend, and wondered why he delayed his coming. He scrutinized the approaching group suspiciously, and would not willingly have given them admittance. A stifled wail at length showed his intuitive knowledge of the master, whom the work of death had effectually disguised from the eyes of men. On the pillow was his pet kitten, and in different parts of the room were his guitar, flute, violin, portfolio, and books, scattered,—the books open, as if recently used. It was a touching sight; the hermit mourned by his humble retainers, the poor animals that loved him, and ready to be laid by strange hands in a foreign grave.

The motives that led this singular and accomplished being, learned in the languages, in the arts and sciences, improved by extensive travel, and gifted with personal beauty and a feeling heart, to seclude himself, in the flower of youth, from human society, are still enveloped in mystery. All that is known was, that his name was Francis Abbot, that he was a native of England, where his father was a clergyman, and that he had received from thence ample remittances for his comfort. These facts had been previously ascertained, but no written papers were found in his cell to throw additional light upon the obscurity in which he had so effectually wrapped the history of his pilgrimage. The lovers of romance have, however, identified his history with that of the hero of several modern tales, in which, as a matter of course, it is asserted that * * *

NIAGARA CITY.

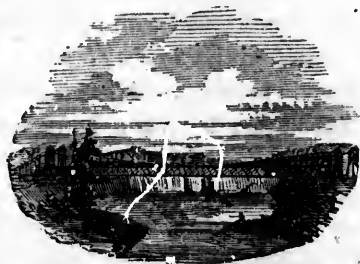
From the beautiful view here obtained of the Falls, this place was formerly called Bellevue. The village has mostly grown up since the time of the erection of the Suspension Bridge, at this point. The population now numbers about 1200, and is rapidly increasing. A grist mill has been erected near the Bridge, the water-wheel of which is placed beneath, requiring a shaft 280 feet long to communicate with the mill, on the top of the bank. The town contains many fine buildings; prominent among these is a very large Railroad Depot. Niagara City has grown so rapidly, and is still so much upon the increase, that a general description only can be applied to it for any length of time.

LEWISTON.

This village is situated at the head of navigation, on the Lower Niagara, and is a place of considerable importance. It lies three miles below the Devil's Hole, and seven miles below the Falls. Lewiston is a pleasant, well built village, but its commercial prospects have been very much injured by the construction of the Erie and Welland Canals.

THE SUSPENSION BRIDGE,

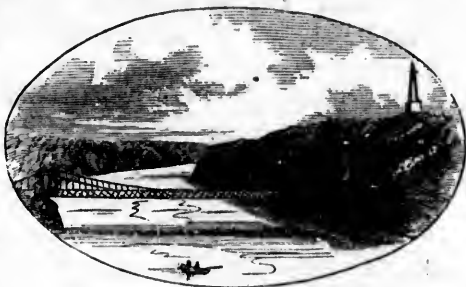
at this point, is one of the most stupendous works of the age. The span of this Bridge is one thousand and forty-five feet. It is carried over large towers of cut stone, and secured by anchors sunk firmly into the solid rock. It is supported by five cables upon each side. Each cable is composed of 250 strands of number ten wire, 1245 feet in length. The extreme capacity of the bridge is estimated at eight hundred and thirty-five tons. This bridge was erected in 1850, under the superintendence of E. W. Serrell, Esq., of Canada East, and is the property of a joint company of Canadians and Americans.



SUSPENSION BRIDGE.

QUEENSTON.

This is a small village, situated nearly opposite to Lewiston, and contains about 200 inhabitants. It is the Canadian termination of the Bridge, and is associated in history with the gallant defence made by the British, on the adjacent heights, in the war of 1812. The village is pleasantly situated, but it has suffered from the same causes that have retarded the growth of Lewiston.



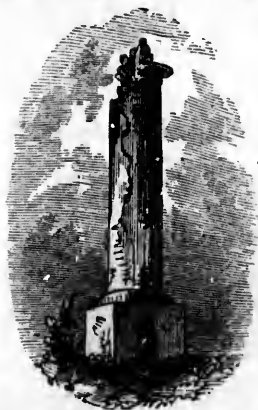
QUEENSTON SUSPENSION BRIDGE.

Near this point the river becomes more tranquil, the shores appear less broken and wild, and the change in the scenery affords a pleasing transition from the sublime to the beautiful.

BROCK'S MONUMENT.

This Monument stands on the Heights of Queenston, from whence the village derived its name. The present structure occupies the site of the former one, which was blown up by some miscreant, on the 17th of April, 1840. The whole edifice is one hundred and eighty-five feet high. On the sub-base, which is forty feet square and thirty feet high, are placed four lions, facing north, south, east, and west; the base of the pedestal is twenty-one and a half feet square, and ten feet high; the pedestal itself is sixteen feet square, and ten feet high, surmounted with a heavy cornice, ornamented with lion heads and wreaths, in alto-relievo.

In ascending from the top of the pedestal to the top of the base of the shaft, the form changes from square to round. The shaft is a fluted column of

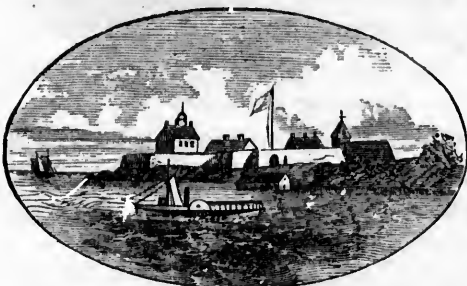


RUIN OF THE OLD BROCK
MONUMENT.

freestone, seventy-five feet high and ten feet in diameter; on which stands a Corinthian capital, ten feet high, on which is wrought, in relief, a statue of the Goddess of War. On this capital is the dome, nine feet high, which is reached by 250 spiral steps from the base, on the inside. On the top of the dome is placed a colossal statue of Gen. Brock.

FORT NIAGARA.

This Fort stands at the mouth of the Niagara River, on the American side. There are many interesting associations connected with



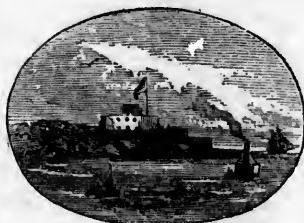
FORT NIAGARA.

this spot; as, during the earlier part of the past century, it was the scene of many severe conflicts between the Whites and the Indians, and subsequently between the English and the French. The names of the heroic La Salle, the courtly De Nou-

ville, and the gallant Prideaux, will long retain a place in the history of this country. The village adjacent to the Fort is called Youngstown, in honor of its founder, the late John Young, Esq.

NIAGARA.

This is one of the oldest towns in Upper Canada, and was formerly the capital of the Province. It is situated where the old town of Newark stood, and is opposite to Youngstown. It faces the river on one side, and Lake Ontario on the other. The trade of this place has been diverted to St. Catherine's, since the completion of the Welland Canal; and the other towns upon the Niagara River have suffered in common, from the same cause.



FORT MASSASAUGA.

the
On
cit
in
bo
sar
Po
it a
to
Am
ver
esp
stru
libe
sho
and
use
Gra
prom
city
cula
alre
fully
rive
unbr
Am

T
of t
ther
Not

* P

TORONTO,

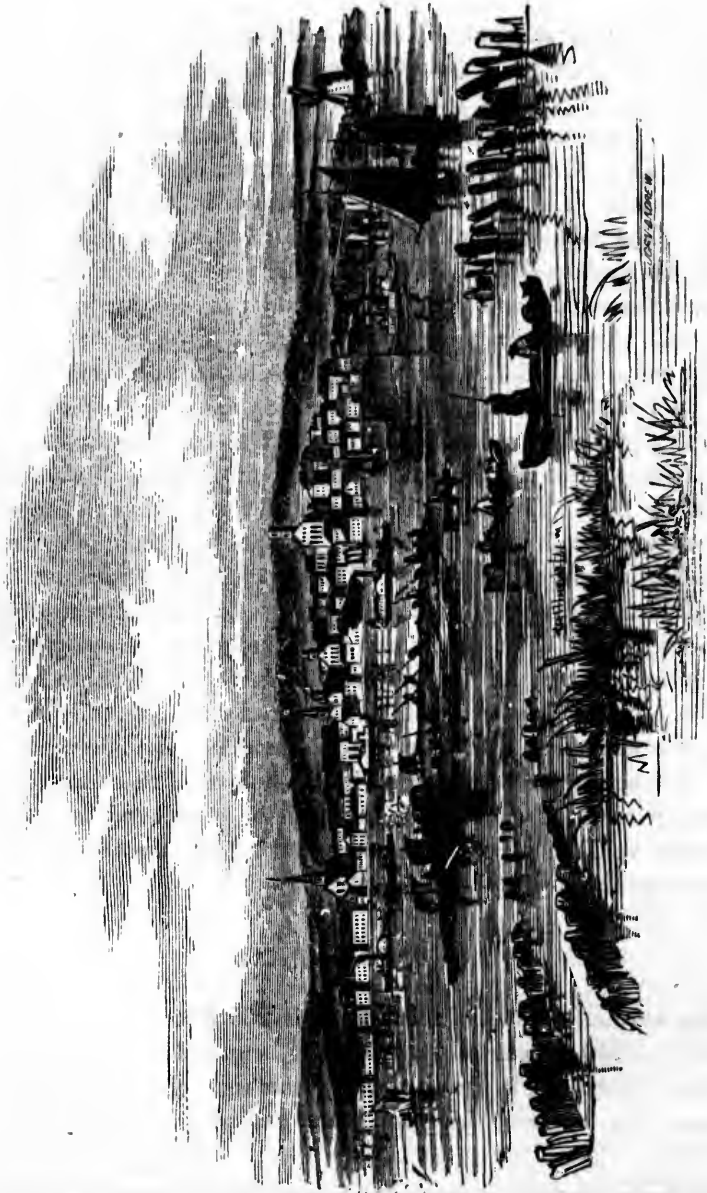
the Capital City in Upper Canada, is situated on an arm of Lake Ontario, thirty-six miles from the mouth of Niagara River. This city was formerly called Little York. The first survey was made in 1793. Toronto Bay is a beautiful inlet, separated from the main body of Lake Ontario, except at its entrance, by a long, narrow, sandy beach. The south-western extremity is called Gibraltar Point. The population, in 1817, was 1200; but, at the present time, it amounts to about 60,000. With a similar progress for a few years to come, the population of this city will be second to none in British America. Among the principal buildings of Toronto, are a University and a Cathedral. One of the ecclesiastical edifices deserves especial notice,—the Church of The Holy Trinity; a handsome structure, erected by a donation of five thousand pounds from some liberal person from England, on condition that the whole of the seats should be free. The Elgin Association, for improving the moral and religious condition of the colored population, is among the most useful institutions of the place. That stupendous undertaking, the Grand Trunk Railway of Canada, passes through Toronto, and promises a splendid future, not only for this city, but for every other city in the country; for the benefits to be derived from it are incalculable. Nature has bestowed fine rivers and vast lakes, which have already been made fully subservient to commerce; but how wonderfully will commerce be advanced by the linking of these lakes and rivers by means of railways. Thus will be constituted one great unbroken medium of speedy communication from the far West of America to the shores of the Atlantic.*

LAKE ONTARIO.

This wonderful sheet of fresh water is 235 feet above the level of the sea, 100 fathoms deep, 200 miles long, and 60 miles wide; therefore, in crossing it, one necessarily loses sight of land altogether. Nothing can be more delightful than sailing on its magnificent

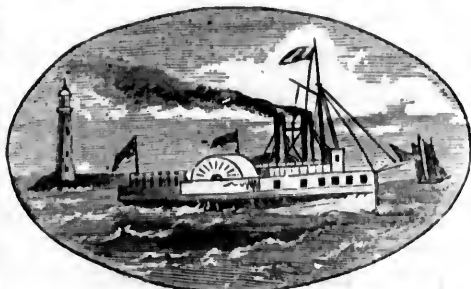
* For further particulars respecting this city, see McKay's Stranger's Guide.

HUNTER'S PANORAMIC GUIDE

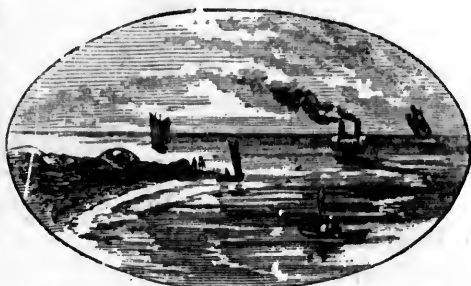


A PORTION OF THE CITY OF TORONTO.

bosom, on a beautiful summer night; but when the storm arises, its placid character is gone, and we are made to feel that it is a sea in power, and may be so in swift destructiveness; for in these land-locked basins shipwrecks often occur, not merely of the frail barks of commerce, but even of the stout-built man of war, should she, when caught in one of the fierce gales which so suddenly sweep the lake, be unable to run for her harbor. The harbor of British armed vessels, in the waters of this lake, is Kingston.



LAKE ONTARIO STEAMER.



LAKE ONTARIO FROM NIAGARA RIVER.

PORT HOPE

is situated sixty-five miles from Toronto. A small stream, which here falls into the Lake, has formed a valley, in which the town is located. The harbor formed at the mouth of this stream is shallow, but safe and commodious. Port Hope is a very pretty town; on the western side, the hills rise gradually one above another. The highest summit, which is called "Fort Orton," affords a fine prospect, and overlooks the country for a great distance around. The village is incorporated, and contains about 2200 inhabitants.

COBOURG

lies seven miles below Port Hope, and contains 4000 inhabitants. The town contains seven churches, two banks, three grist mills, two

foundries, and the largest cloth factory in the province. It is also the seat of Victoria College and a Theological Institute. Midway between Port Hope and Cobourg is "Duck Island," on which a lighthouse is maintained by the government.

KINGSTON.

This place was called by the Indians, "*Cataracqui*." A settlement was begun by the French, under De Courcelles, as early as 1672. The Fort, which was finished the next year, was called Fort Frontenac, in honor of the French count of that name. This Fort was alternately in the possession of the French and the Indians, until it was destroyed by the expedition under Col. Bradstreet, in 1758. In 1762, the place fell into the hands of the English, from



KINGSTON.

whom it received its present name. Kingston is one of the most important military posts in Canada. It is one hundred and ten miles from Cobourg, and contains about 11,000 inhabitants.

[Before proceeding down the St. Lawrence, we will retrace our steps, and briefly notice the places on the American side of Lake Ontario.]

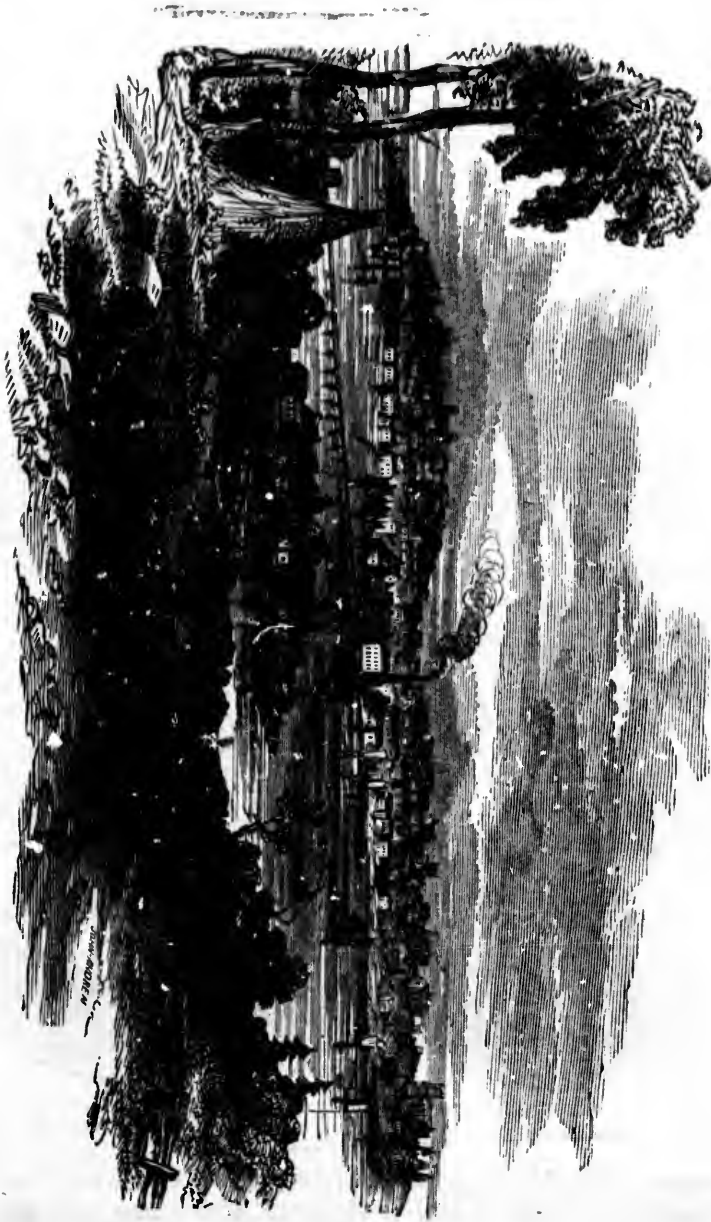
CHARLOTTESVILLE

is situated at the mouth of the Genesee River, and is the port of entry for Rochester. It is seventy-five miles from the mouth of the Niagara. The Genesee is navigable by steamers to Carthage, five miles from its mouth. At Carthage, passengers can take omnibuses to Rochester, two miles distant.

OSWEGO

is the next port, after passing Charlottesville. It is a beautiful and flourishing town, and contains a population of about 15,000. It is

CITY OF KINGSTON, C. W.



t is also
Midway
whic. a

settle-
early as
ed Fort

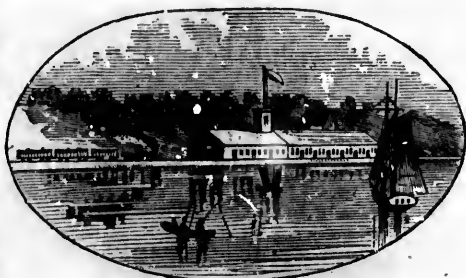


e most
nd ten
ce our
Lake

ort of
of the
e, five
buses

l and
It is

the commercial centre of a fertile and wealthy part of the country, and is the terminus of a railroad and a canal, connecting it with Syracuse and the New York Central Railway. The history of this place is associated with many hard battles, fought during the time of the Indian and the French wars.



CAPE ST. VINCENT RAILROAD DEPOT.

SACKETT'S HARBOR.

This place is situated about forty-five miles from Oswego, and twenty miles from the St. Lawrence. It lies upon the north-eastern shore of Lake Ontario, and derives its name from Mr. Sackett, of Jamaica, L. I., who purchased and took possession of it in 1799. It is admirably fitted, from its position, for a naval station, and is now the seat of a military post, called "Madison Barracks."

THE THOUSAND ISLANDS

are amongst the wonders of the St. Lawrence ; situated about six miles below Kingston. There are, in fact, no less than 1800 of these "emerald gems in the ring of the wave," of all sizes, from the islet

FORT HENRY — MARTELLO TOWER
CEDAR ISLAND.LIGHTHOUSE ON ONE OF THE
THOUSAND ISLANDS.

a few yards square, to miles in length. It is a famous spot for sporting; myriads of wild fowls of all descriptions may here be

found; and angling is rather fatiguing than otherwise, from the great quantity and size of the fish. These islands, too, have been the scene of most exciting romance. From their great number, and the labyrinth-like channels among them, they afforded an admirable retreat for the insurgents in the last Canadian insurrection, and for the American sympathizers with them; who, under the questionable name of "patriots," sought only to embarrass the British Government. Among these was one man, who, from his daring and ability,



VIEWS AMONG THE THOUSAND ISLANDS.

became an object of anxious pursuit to the Canadian authorities; and he found a safe asylum in these watery intricacies, through the devotedness and courage of his daughter, whose inimitable management of her canoe was such, that through hosts of pursuers she baffled their efforts at capture, while she supplied him with provisions in these solitary retreats, rowing him from one place of concealment to another, under shadow of the night. But, in truth, all the islands, which are so numerous studded through the whole chain of those magnificent Lakes, abound with materials for romance and poetry. For instance, in the Manitoulin Islands, in Lake Huron, the Indians believe that the *Manitou*, that is, the *Great Spirit* (and hence the name of the islands) has forbidden his children to seek for gold; and they tell you that a certain point, where it is reported to exist in large quantities, has never been visited by the disobedient Indian without his canoe being overwhelmed in a tempest.

CLAYTON.

This village is situated on the American side, opposite to the "Thousand Islands," and is of considerable importance as a lumber

station. Square timber and staves are here made up into large rafts, and floated down the St. Lawrence to Montreal and Quebec. These rafts are often very large; and as they require a great number of men to navigate them, the huts erected for their shelter give them, as they pass down the river, the appearance of small villages. Many of the steamers and other craft that navigate Lake Ontario are built here.

ALEXANDRIA BAY

is the next port, after leaving Clayton. It is built upon a massive pile of rocks, and its situation is romantic and highly picturesque. It is a place of resort for sportsmen. Some two or three miles below the village, is a position from whence one hundred islands can be seen at one view.

BROCKVILLE.

This village was named in honor of General Brock, who fell on Queenston Heights, in the war of 1812. It is situated on the Canadian side of the St. Lawrence, and is one of the pleasantest villages in the province. It is situated at the foot of the Thousand Islands, on an elevation of land which rises from the river in a succession of ridges. The town was laid out in 1802, and is now a place of considerable importance. The present population is about 2500.

OGDENSBURGH.

In the year 1748, the Abbé Francois Piquet, who was afterwards styled the "Apostle of the Iroquois," was sent to establish a mission at this place, as many of the Indians of that tribe had manifested a desire of embracing Christianity. A settlement was began in connection with this mission, and a fort, called "La Presentation," was built at the mouth of the Oswegatchie, on the west side. The remains of the walls of this Fort are still to be seen. In October, 1749, it was attacked by a band of Indians from the Mohawks, who, although bravely repulsed, succeeded in destroying the pallisades of the fort, and two of the vessels belonging to the colony. The Abbé Piquet retired from the settlement soon after the defeat of Montcalm, and finally returned to France, where he died in 1781.

In describing the situation of the ground on the east side of the river, opposite to his fort, the Abbé, with his accustomed discrimination, remarked: "A beautiful town could hereafter be built here." This prediction has been fully verified; and the village of Ogdensburgh now occupies this site. It is a flourishing town. It has increased rapidly within the few past years, and will doubtless become a large manufacturing place. The Northern Railroad, which runs to Lake Champlain, a distance of one hundred and eighteen miles, and which connects at Rouse's Point with the railroads to Boston and Montreal, has its terminus here.

PRESCOTT

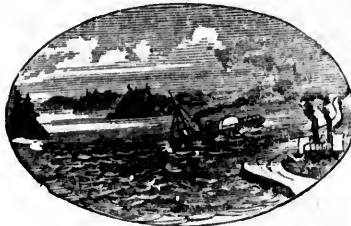
is situated on the Canada side of the St. Lawrence, opposite Ogdensburgh, and contains about 3000 inhabitants. Previous to the opening of the Rideau Canal between Kingston and Ottawa City (formerly Bytown), Prescott was a place of importance in the carrying trade between Kingston and Montreal; but since that event its growth has been checked. Matters have, however, again changed, and for Prescott there are prospects of brighter days to come. Through the influence, and energy, and untiring perseverance of Robert Bell, Esq., of Ottawa City, a railroad has been built, under almost insurmountable obstacles, which extends from Ottawa City to Prescott, and there connects the Ottawa River with the St. Lawrence.



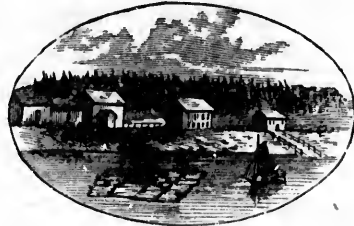
WINDMILL POINT.

The enterprise has, thus far, more than realized the most sanguine hopes of its projector. About a mile below the town of Prescott, at a place called "Windmill Point," are the ruins of an old stone windmill, in which, in 1837, the "Patriots," under Von Shultz, a Polish exile, established themselves, but from which they were driven with severe loss. About five miles below Prescott is Chimney Island, on which the remains of an old French fortification are to be seen. The first rapid of the St. Lawrence, is at this island.

The next town on the American side is Waddington; and in the river, over against it, is Ogden Island. On the Canada side is Morrisburg, formerly called West Williamsburg. It is called the Port of Morristown, and contains about two hundred inhabitants.



GALLOPS RAPIDS.



CHRYSELER'S FARM.

A short distance below Morristown, on the Canada side, is Chryse-ler's Farm, where, in 1813, a battle was fought between the En-glish and the Americans. The Americans were commanded by Gen. Wilkinson, and were at that time descending the river to attack Montreal. The attempt was afterwards abandoned. Thirty miles below Ogdensburgh is Louisville, from whence stages run to Massena Springs, distant seven miles.

LONG SAULT.

This is a continuous rapid of nine miles, divided in the centre by an island. The usual passage for steamers is on the south side. The channel on the north side was formerly considered unsafe and dangerous; but examinations have been made, and it is now de-scended with safety. The passage in the southern channel is very narrow, and such is the velocity of the current that a raft, it is said, will drift the nine miles in forty minutes.

DESCENT OF THE RAPIDS.

This is the most exciting part of the whole passage of the St. Lawrence. The rapids of the "Long Sault" rush along at the rate of something like twenty miles an hour. When the vessel enters within their influence the steam is shut off and she is carried

and in
the side
called
bitants.



Chryse-
the En-
by Gen.
to attack
y miles
run to

entre by
h side.
afe and
ow de-
is very
is said,

the St.
he rate
enters
carried

STEAMERS DESCENDING LOST CHANNEL, LONG SAULT RAPIDS





BATISTE, AN INDIAN PILOT, STEERING A STEAMER
DOWN THE RAPIDS OF THE ST. LAWRENCE.

onv
pre
anc
the
labo
nar
sea,
wat
el s
serv
imm
dous
and

her
facil
by n
rapid
the
can
Som
peril
requ
two
ing.
ing
dema
life t

onwards by the force of the stream alone. The surging waters present all the angry appearance of the ocean in a storm; the noble boat strains and labors: but, unlike the ordinary pitching and tossing at sea, this going down hill by water produces a highly novel sensation, and is, in fact, a service of some danger, the



LONG SAULT RAPIDS.

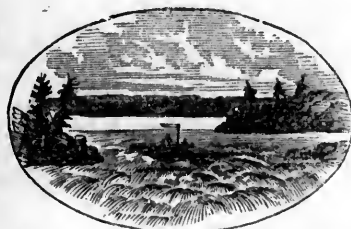
imminence of which is enhanced to the imagination by the tremendous roar of the headlong, boiling current. Great nerve, and force, and precision are here required in piloting, so as to keep the vessel's



VIEW IN THE LONG SAULT.

head straight with the course of the rapid; for if she diverged in the least, presenting her side to the current, or "broached to," as the nautical phrase is, she would be instantly capsized and submerged. Hence the necessity for enormous power over

her rudder; and for this purpose the mode of steering affords great facility, for the wheel that governs the rudder is placed ahead, and by means of chain and pulley sways it. But in descending the rapids a tiller is placed astern to the rudder itself, so that the tiller can be manned as well as the wheel. Some idea may be entertained of the peril of descending a rapid, when it requires four men at the wheel and two at the tiller to ensure safe steering. Here is the region of the daring raftsmen, at whose hands are demanded infinite courage and skill; and, despite of both, loss of life frequently occurs.



RAFT DESCENDING THE RAPIDS.



JOHN ANDREW

STEAMER DESCENDING ONE OF THE RAPIDS OF THE ST. LAWRENCE.

Ge
Po
Ra
Fa
Co
Be
Ce
La
Fa

Fru

T
from
aid
stea
mail
wha



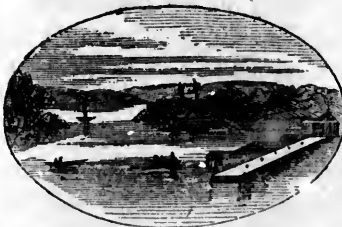
ENT

lock.
desc
the r
the v
canal

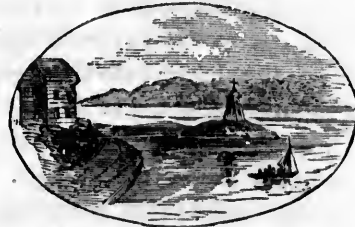
ST. LAWRENCE CANALS.

	Miles.	Locks.	L. Ft.
Gallops Canal, - - - - -	2	2	8.
Point Iroquois Canal, - - - - -	3	1	6.
Rapid Platt Canal, - - - - -	4	2	11.6
Farren's Point Canal - - - - -	$\frac{3}{4}$	1	4.
Cornwall Canal, Long Sault, - - - - -	11 $\frac{1}{2}$	7	48.
Beauharnois Canal, Coteau, - - - - -			
Cedars, Split Rock, Cascade Rapids, -	11 $\frac{1}{4}$	9	82.6
La Chine Canal, La Chine Rapids, -	8 $\frac{1}{2}$	5	44.9
Fall on portions of the St. Lawrence between canals from Lake Ontario to Montreal, - - - - -			17.
From Montreal to tide water at Three Rivers, - - - - -			12.9
	41	27	234.4

The St. Lawrence canal was designed for paddle steamers, but from the magnitude of the rapids and their regular inclination the aid of the locks is not required in descending the river. Large steamers, drawing seven feet water, with passengers and the mails, leave the foot of Lake Ontario in the morning, and reach the wharves at Montreal by daylight, without passing through a single



ENTRANCE TO CORNWALL CANAL.



DICKINSON'S LANDING.

lock. At some of the rapids there are obstacles preventing the descent of deeply laden craft; but the government are about to give the main channel in all the rapids a depth of ten feet water, when the whole descending trade by steam will keep the river, leaving the canals to the ascending craft.

STEAMER DESCENDING ONE OF THE RAPIDS OF THE ST. LAWRENCE.

CORNWALL.

This is a pleasant town, situated at the foot of the Long Sault, on the Canada side. Here vessels are passed up the river by the Cornwall canal, and come out into the river about twelve miles above. The boundary line between the United States and Canada passes near this village, and the course of the St. Lawrence is hereafter within Her Majesty's dominions.

ST. REGIS

is an old Indian village, and lies a little below Cornwall, on the opposite side of the river. It contains a Catholic church, which was built about the year 1700. While the building was in progress, the



ST. REGIS INDIANS.

Indians were told by their priest that a bell was indispensable in their house of worship, and they were ordered to collect furs sufficient to purchase one. The furs were collected, the money was sent to France, and the bell was bought and shipped for Canada; but the vessel which contained it was captured by an English cruiser, and taken into Salem, Massachusetts. The bell was afterwards purchased for the church at Deerfield. The priest of St. Regis, having heard of its destination, excited the Indians

to a general crusade for its recovery. They joined the expedition fitted out by the governor against the New England colonists, and proceeded through the then long, trackless wilderness, to Deerfield, which they attacked in the night. The inhabitants, unsuspecting of danger, were aroused from sleep only to meet the tomahawk and scalping-knife of the savages. Forty-seven were killed, and one hundred and twelve taken captive; among whom were Mr. Williams, the pastor, and his family. Mrs. Williams being at the time feeble, and not able to travel with her husband and family, was killed by the Indians. Mr. Williams and a part of his surviving family afterwards returned to Deerfield, but the others remained with the Indians, and became connected with the tribe. The Rev. Eleazar Williams, one of the supposed descendants from this family,

has been mysteriously identified with the le Dauphin of France. The Indians, after having completed their work of destruction, fastened the bell to a long pole, and carried it upon their shoulders a distance of nearly one hundred and fifty miles, to the place where Burlington now stands; they buried it there, and in the following spring removed it to the church at St. Regis, where it now hangs.

LAKE ST. FRANCIS

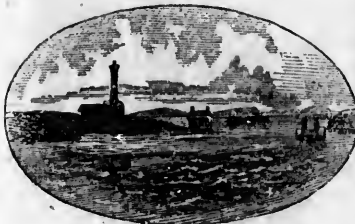
This is the name of that expansion of the St. Lawrence which begins near Cornwall and St. Regis, and extends to Coteau du Lac, a distance of forty miles. The surface of this lake is interspersed with a great number of small islands. The village of Lancaster is situated on the northern side; about midway of this lake.

COTEAU DU LAC

is a small village, situated at the foot of Lake St. Francis. The name, as well as the style of the buildings, denotes its French origin. Just below the village are the Coteau Rapids.

CEDARS.

This village presents the same marks of French origin as Coteau du Lac. In the expedition of Gen. Amherst, a detachment of three hundred men, that were sent to attack Montreal, were lost in the rapids near this place. The passage through these rapids is very exciting.



CEDAR RAPIDS.

There is a peculiar motion of the vessel, which in descending seems like settling down, as she glides from one ledge to another. In passing the rapids of the Split Rock, a person unacquainted with the navigation of these rapids will

almost involuntarily hold his breath until this ledge of rocks, which is distinctly seen from the deck of the steamer, is passed. At one time the vessel seems to be running directly upon it, and you feel



RAPIDS NEAR "THE CEDARS"—RIVER ST. LAWRENCE.

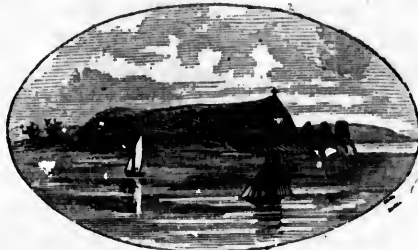
certain that she will strike; but a skilful hand is at the helm, and in an instant more it is passed in safety.

BEAUHARNOIS

is a small village at the foot of the Cascades, on the south bank of the river. Here vessels enter the Beauharnois canal, and pass around the rapids of the Cascades, Cedars, and Coteau, into lake St. Francis, a distance of fourteen miles. On the north bank, a branch of the Ottawa enters into the St. Lawrence. The river again widens into a lake called the St. Louis. From this place a view is had of Montreal Mountain, nearly thirty miles distant. In this lake is Nun's Island, which is beautifully cultivated, and belongs to the Gray Nunnery, at Montreal. There



CASCADES FROM ENTRANCE TO
BEAUHARNOIS CANAL.



NUN'S ISLAND.

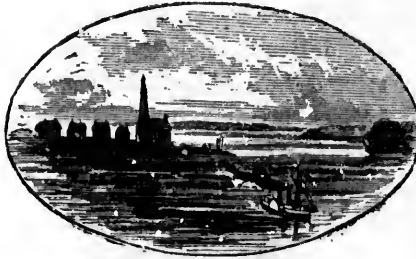
are many islands in the vicinity of Montreal belonging to the different nunneries, and from which they derive large revenues.

LA CHINE.

This village is nine miles from Montreal, with which it is connected by railroad. The La Chine Rapids begin just below the town. The current is here so swift and wild that to avoid it a canal has been cut around these rapids. This canal is a stupendous work, and reflects much credit upon the energy and enterprise of the people of Montreal.

CAUGHNAWAGA.

This is an Indian village lying on the south bank of the river, near the entrance of the La Chine Rapids. It derived its name from the Indians that had been converted by the Jesuits, who were called



CAUGHNAWAGA VILLAGE.

“*Caughnawagas*,” or “praying Indians.” This was probably a misnomer, for they were distinguished for their predatory incursions upon their neighbors in the New England provinces. The bell that now hangs in their church was the “proceeds” of one

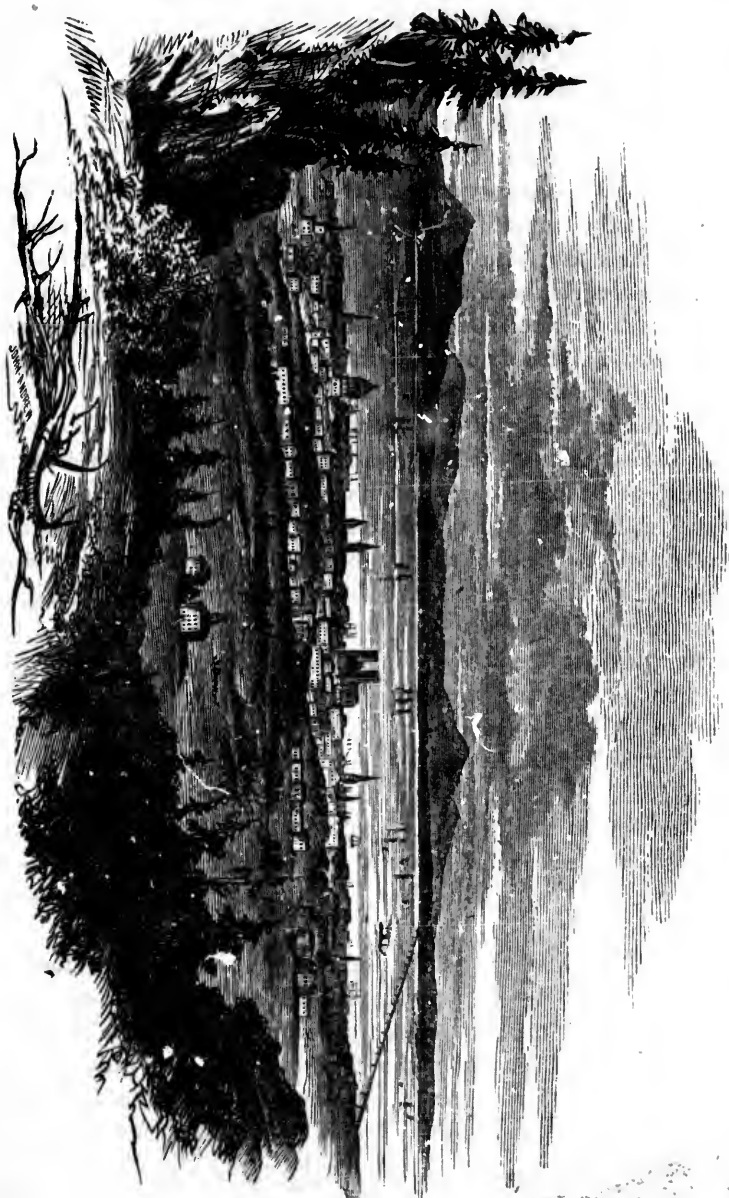
of these excursions. The village of La Prairie is some seven miles below Caughnawaga.

MONTREAL,

THE largest and most populous city, in fact the commercial metropolis of British North America, is pleasantly situated upon the south shore of an island, and at the base of Mount Royal, from which both the city and the island take their name. The island is about thirty miles long, and ten broad, and is formed by the River Ottawa debouching into the St. Lawrence, at its western and eastern extremities, the former near St Annes, the latter at Bout de l'Isle. It is famed for the fertility of its soil.

The city was founded in 1642, upon its present site, and for a long time bore the name of *Ville Marie*. Hochelaga was the name of the original Indian village, upon which a portion of the city is built, and the eastern suburb of it still retains the name. It was first explored by Jacques Cartier in 1535. Of its early history nothing has come down to us beyond that the French settlers were constantly annoyed by the ravages of the Iroquois Indians. In 1758 it had a population of about 4000 souls, and had evidently been laid out upon the old French plan of narrow streets, and was divided, as now, into upper and lower town; the upper part then being the level of the present Court house. According to an old chronicle: “In the lower town the merchants and men of business chiefly resided, and here

MONTREAL.



river,
he from
e called
"pray-
s prob-
they
r their
upon
e New
he bell
church
of one
n miles

ropolis
south
which
about
Ottawa
eastern
l'Isle.

for a
e name
city is
as first
othing
tantly
had a
e upon
, into
of the
lower
here

also were the place of arms, the royal magazines, and the Nunnery Hospital. The principal buildings were in the upper town, such as the palace of the Governor, the houses of the chief officers, the Convent of the Recollets, the Jesuits' Church and Seminary, the Free School, and the Parish Church. The houses were solidly constructed in that semi-monastic style peculiar to Rouen, Caen, and other towns in Normandy: some of the buildings of that period are still standing. It was for a long time the head quarters of the French forces in Canada. In 1763 it was surrendered to the English, and about that time it was described as a city of an oblong form, surrounded by a wall flanked with eleven redoubts, a ditch about eight feet deep, and of a proportionable width, but dry, and a fort and citadel.

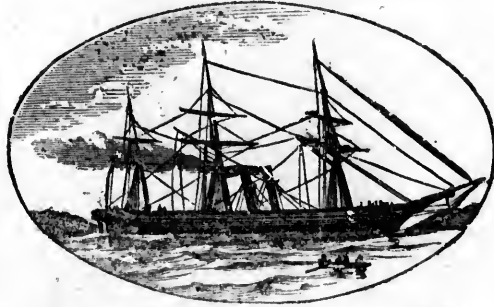
At the beginning of the present century vessels of more than 300 tons could not ascend to Montreal, and its foreign trade was carried on by small brigs and barques. In 1809 the first steam vessel, called *The Accommodation*, built by the Hon. John Molson, made a trip to Quebec; she had berths for about twenty passengers. Now, behold the contrast that fifty years of industry, intelligence, enterprise and labour have produced—ocean steamers of 3000 tons; the magnificent steamers of the Richelieu Company, vying in splendour and comfort with the far famed Hudson River boats; ships, from 700 to 1200 tons, from all parts of the world, lying alongside the wharves of the harbour—which are not equalled on this continent, in point of extent, accommodation, approach and cleanliness.

The city, as seen from its approach by steamboat, with Mount Royal for a back ground, covered with beautiful villas, interspersed here and there with tall spires, is majestic, and for beauty almost unrivalled.

The river frontage is nearly three miles in length, extending from the Victoria Bridge to the village of Hochelaga. For upwards of a mile it has an excellent stone retaining wall from the entrance to the Lachine Canal to below the Bonsecours Market, which, with its glittering dome, forms one of the most conspicuous objects in the right foreground, and contrasts with the neighbouring spire of the Bonsecours Church, one of the oldest churches in Montreal. We scarcely think the view can be paralleled as you pass under the centre

* See page 48.

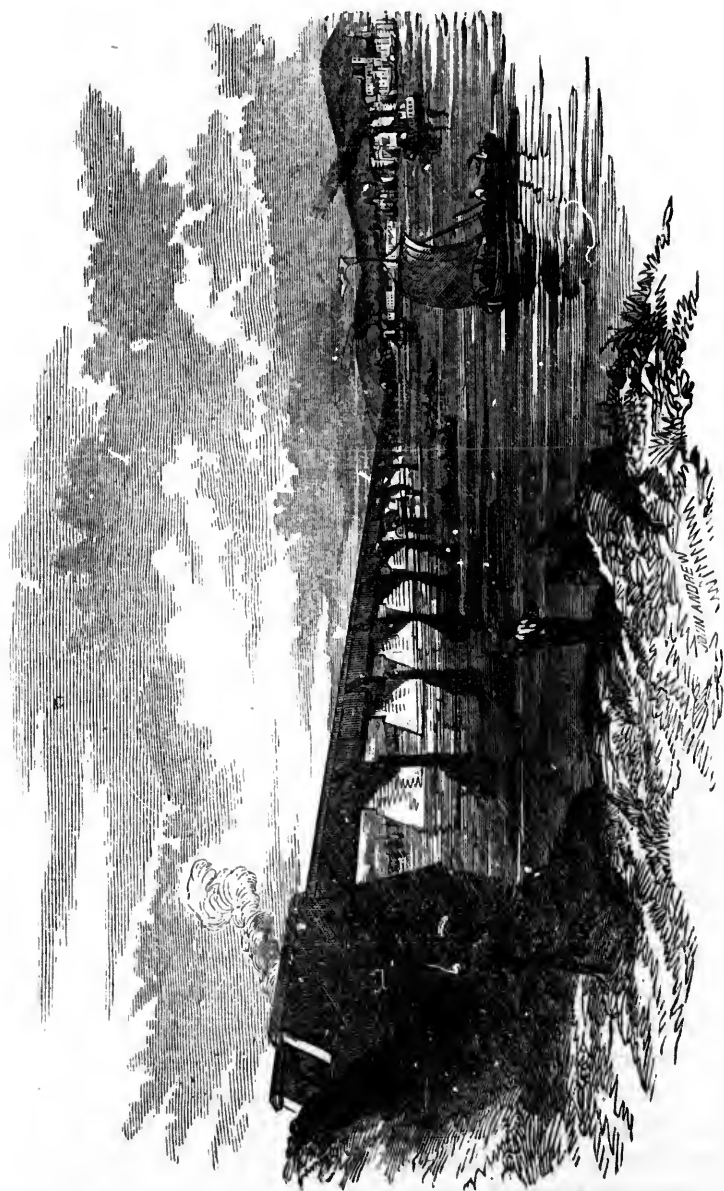
tube of the Victoria Bridge, and first view the long array of glittering spires, the lofty towers of the Parish Church of Notre Dame, the well proportioned tower of the Royal Insurance Buildings, and the long unbroken line of cutstone stores flanking the wharf, from the steamer.



LIVERPOOL AND MONTREAL SCREW STEAMER.

We will now suppose the stranger landed at the base of Jacques Cartier Square: the first thing arresting his eye will be the Bonsecours Market and Town Hall; it is an imposing building of a quasi-Doric character, surrounded with a large dome; it is divided into three stories, the basement and first floor serving the purpose of a market, which is always supplied with an excellent stock of provisions. The upper part is occupied by the various city offices, and by the city concert hall—a room capable of containing four thousand persons. The building cost about £75,000. Proceeding through Jacques Cartier Square he need not pause to examine Nelson's monument, but can turn to the left and view the Court House, an Ionic structure, about a hundred and twenty feet long by about seventy in height; it contains all the judiciary courts, as well as the Prothonotary's office and Court of Bankruptcy. There is a very valuable law library, containing upwards of 6000 volumes. At the back of the Court House is the Champ de Mars, a well kept parade ground, upon which the different regiments in garrison, and the Volunteer Militia parade: upon it three thousand troops may be manœuvred. During the summer some one or other of the regiments of the line, or the Volunteers, are exercised—occasionally the military bands play here.

Going from the Court House, on the road to the St. Lawrence or



VICTORIA BRIDGE—MONTREAL.

Ot
 is n
 it i
 Da
 ten
 and
 220
 one
 wei
 a fir
 pay
 pros
 near
 cover
 Islan
 boili
 dista
 with
 St. J
 its si
 On
 and
 build
 Gree
 On
 Bank
 forme
 tions
 On th
 impos
 frater
 The l
 There
 well f
 Amer
 Gian
 fine f

Ottawa hotels, the visitor enters a square called Place d'Armes. It is not large in dimensions, but few on this continent, if any, can equal it in point of its buildings. On the left is the Cathedral of Notre Dame, said to be the largest in North America, and capable of holding ten thousand people. It is about 260 feet long, by 140 feet broad, and the front facing the square is flanked by two massive towers 220 feet in height. In the one on the left there is a peal of bells, one of which goes by the name of "Gros Bourdon." It is said to weigh nearly 30,000 lbs.; it has a deep bass sound, and is used as a fire alarm. The tower on the right can be ascended upon the payment of a small fee, and from its battlement a most wonderful prospect is obtained—the broad rolling waters of the St. Lawrence, nearly two miles wide, lying almost at the feet of the spectator, covered with shipping; to the right the Victoria Bridge, Nun's Island, the village of Laprairie, with the glittering steeple, the boiling rapids of Lachine, the blue hills of Vermont in the far off distance—to the left, the beautiful island of St. H. J. J. J., covered with trees clothed in the proud prosperity of leaves, the villages of St. Lambert and Longueuil, and the river studded with islands, until its silver course is lost at the village of Verchères.

On the side of the square facing the Cathedral are the Montreal and City Banks. The former one of the most imposing public buildings in the city; it is built of cut limestone; its style, modern Grecian.

On the left hand of the square are the Merchants Bank, Ontario Bank, the London and Liverpool Insurance Company's office. The former is built of Ohio sandstone, the style is Italian; the proportions are good. This row is a pretty piece of street architecture. On the right hand side is a fine block called Muir's buildings—a very imposing edifice. The fourth story is occupied by the honorable fraternity of Freemasons, holding under the Canadian Register. The lodge room is 52 feet long by 34 feet wide, and is 16 feet high. There are several anterooms. The interior of the lodge room is well furnished and decorated. Next to this block is the British and American Express offices, and the Cosmopolitan Hotel, kept by Gianelli. The centre of the square is laid out as a garden, with a fine fountain.

Adjoining the square is Great St. James Street, in which there are some fine buildings—

The Post Office, a well proportioned building, and very conveniently arranged. Opposite to it is the far famed hostelry, the St. Lawrence Hall, H. Hogan, proprietor. Passing down this side of the street the first building that arrests the attention is the Methodist Church, a very commodious and well arranged interior; it possesses one of the finest organs in the city. Just below is Nordheimer's Hall—the basement is occupied by Messrs. Gould and Hill, music instrument sellers. On the first floor is a music hall capable of holding a thousand people, it is well adapted for sound. At the end of the street is a large block occupied by the firm of Henry Morgan & Co., dry goods merchants; it occupies the site of the old American Presbyterian church, built in 1825-6. Nearly opposite this is the Ottawa hotel, kept by W. Browning. Passing on is a novel store front, the premises of Messrs. Prowse; it is highly ornamental and composed of zinc. Next is Molsons Bank, the most pretentious building in Montreal; it has two frontages or façades faced with Ohio sandstone. The shafts of the Doric columns of the portico and those of the Corinthian columns on the Great St. James street front are of polished Peterhead granite.

Turning down Peter street, past Molsons Bank upon the left, is a very handsome block, "Caverhill's Buildings"—these stores, without exception, are not surpassed by any thing in British North America. They are six stories in height, cut limestone. The front is an elaborate composition in the Italian Palazzo style, bold and massive in character. At the bottom of Peter street runs right and left St. Paul street, wherein are congregated nearly all the principal dry good and hardware stores. This street is a credit to the modern enterprise of Montreal. It is symbolic of the wealth of the city. The same remark will equally apply to the stores in Lemoine and McGill streets. In short, the rapid growth of Montreal during the past seven years is scarcely with a parallel in the history of even such cities as Chicago, New York, or Boston.

It will now be simply a duty to point out the various places and things in the city or vicinity of Montreal worth seeing.

Foremost is the Geological Museum, facing the Champ de Mars,

in Gabriel street; this is an institution that Canada may well be proud of. It is under the direction of that able geologist, Sir Wm. Logan, than whom this science has never had one whose soul was more in his work, and whose ability was better able to direct the geological survey of so great a mineral country as Canada.

The University of McGill College, with its museum, and that of the Natural History Society, near the English Cathedral, are well worthy inspection. The tourist can gain information relative to the zoology and ornithology of Canada; and to those who are disciples of Isaac Walton, from the curator of the Natural History Society who can give any information regarding the fishing grounds.

It has been remarked, "let me see the resting place of the dead, and I will form an estimate of the living." Granting the premises, we can say, go to the Mount Royal Cemetery. It will compare favourably with the far-famed Père la Chaise at Paris. The cemetery is passed in what is called "the drive round the two mountains"; this is a favourite pastime with the inhabitants of Montreal, and a very delightful drive it is; going by St. Lawrence street, there is a fine country from Côte des Neiges across the island to the "Back River" or Ottawa, with its numerous hamlets, convents and churches; and for a pic-nic commend us to the *Priests' Island*, close to the old mill by the rapids, Sault au Recollet, a delightful spot, and where, during the season, a good day's fishing is to be had.

The drive out to Lachine, by the upper road, is a great favourite. Crossing over to the Indian village of Caughnawaga, and going off with the pilot, and shooting the rapids, ought not to be missed by the tourist who has not come from the West by steamboat. The piloting is generally confined to the Indians, though why they should have more nerve than others we cannot conjecture; the task seems a perilous one, but it has been done so often without accident that the most timid need not be alarmed, though the steamer is carried away at the rate of nearly thirty miles an hour, apparently not under command, as she plunges madly into the boiling rapid, where the breakers are huge waves, and the spray is dashed sometimes over the funnel of the steamer. There is a keen eye and a steady hand at the wheel. This is an excitement that must be realized; it fails in description.

A day may be spent with pleasure at the little village of St. Annes,

the place where Tom Moore composed his celebrated Canadian boat song, "Row, brothers, row, the rapids are near," &c. The journey can be made either by train to Lachine, thence per *Prince of Wales* steamer, and back by Grand Trunk Railway—or *vice versa*—the time of starting either way being at the choice of the tourist.



MONTREAL AND VICTORIA BRIDGE.

The Victoria Bridge ought to be visited; on application to the engineer's office of the Grand Trunk Railway at Point St. Charles, a ticket can be procured to pass through it on foot, the only way in which this grand piece of engineering triumph can be seen with advantage. It is a wonderful structure, and reflects as much credit on the successful builders as upon the original designers. The bridge proper rests upon twenty-four piers, and is about a mile and quarter long. The piers are all at a distance of 242 feet; with the exception of the two centre piers; these are 330 feet; upon these rest the centre tube, which is 60 feet above the summer level of the St. Lawrence. The piers, or at least their abutments, present to the down stream, which is about seven miles per hour, a sharp-pointed edge, to resist the pressure of the ice in the winter, which offers a resistance of many thousands of tons; the piers are calculated to resist a pressure of seventy thousand tons. At the centre of the bridge is an opening, so that the visiter may ascend to the top of the centre tube; from this there is a magnificent view of the river. The important part this bridge plays with the uninterrupted communication of the Western traffic with that of the United States—Boston, Portland, &c.—need not be dilated on. It is more than commensurate with its cost—nearly 7,000,000 dollars. It gives to Montreal an unbroken railway communication of 1,100 miles, besides con-

nections. Robert Stevenson was the engineer, and Jas. Hodges the builder.

The Engineering Works of the Grand Trunk Railway, at Point St. Charles, near the western end of the Victoria Bridge, are well worthy a visit. Upon application to Richd. Eaton, Esq., the superintendent of the locomotive department, a ticket of admission may be obtained.

Another favourite trip is that to Belœil Mountain, near St. Hilaire. The latter is a station on the Grand Trunk Railway, about 18 miles from Montreal, and where several trains stop during the day, so that there will be no difficulty in performing the trip without remaining at the village for the night. From St. Hilaire Station the tourist proceeds to the pretty little village of Belœil, and when conducted to the base of the mountain, it can be ascended with comparative ease—even by ladies—by a circuitous path, passing through a maple grove, which leads to a beautiful lake, formed in the hollow of the mountain. This lake abounds with fish. This is the general resting place, before the ascent to the peak, upon the summit of which used to be a small oratory, surmounted with a huge cross covered with bright tin; this cross was visible upwards of thirty miles. From the site of the oratory, about 1,500 feet above the level of the River St. Lawrence, can be obtained a panoramic view, sixty miles in radius.

The English Cathedral (Episcopal), in St. Catherine street, is by far the most perfect specimen of Gothic architecture in America. It is well worthy a visit. The whole neighborhood is studded with churches—Roman Catholic, Presbyterian, and Wesleyan Methodist—each vying with a lofty spire to make the ecclesiastical architecture of the city worthy of comparison with the many public buildings with which Montreal abounds.

The new Church of the Jesuits is a very imposing edifice. The interior is covered with frescoes of some incident in the lives of our Saviour and his Apostles.

Erskine Church, and John Knox Church, (Scotch Presbyterian), are two fair specimens of modern Gothic. The Wesleyan Church, with its graceful lantern and spire, forms a conspicuous object, though its dimensions are overtopped by the large American Presbyterian Church adjoining it.

A little further westward is a pretty little Gothic Church (Episcopalian), dedicated to St. James the Apostle; and beyond that again, the large Roman Catholic Seminary, at the Priest's farm, there is a beautiful Chapel, well worthy inspection. The grounds and gardens attached to the seminary are the most beautiful in Canada.

WATER WORKS. The water is taken from the St. Lawrence about one and a half miles above the Laehine Rapids, where the elevation of the river surface is about 37 feet above the Harbour of Montreal. The Wheel-house at the termination of the aqueduct is worthy of notice. The water is admitted to and discharged from this building through submerged archways under covered frost proof passages, extending above and below the building. There are two iron wheels, twenty feet diameter, and twenty feet broad. These wheels are upon the suspension principle, "high breast" or "pitch back," with ventilated buckets. These reservoirs are excavated out of the solid rock, and have a water surface of over ninety thousand square feet, 206 feet above the harbour, with a depth of 25 feet. The length is 623 feet, with a breadth of 173 feet, formed into two reservoirs by a division wall. The two contain about fifteen million gallons. Total cost of aqueduct, machinery, pumping-main, and reservoirs about \$1,800,000.

FIRE ALARM TELEGRAPH was recently erected, and proved a thorough success. The chief office is in the City Hall, from which it has connections with upwards of 64 boxes, the church bells, several public clocks, the Observatory and Water Works near McGill College.

LONGUEUIL

is a small village on the south bank of the river, three miles below Montreal. It is important only as being the present terminus of the St. Lawrence and Atlantic Railroad.

WILLIAM HENRY,

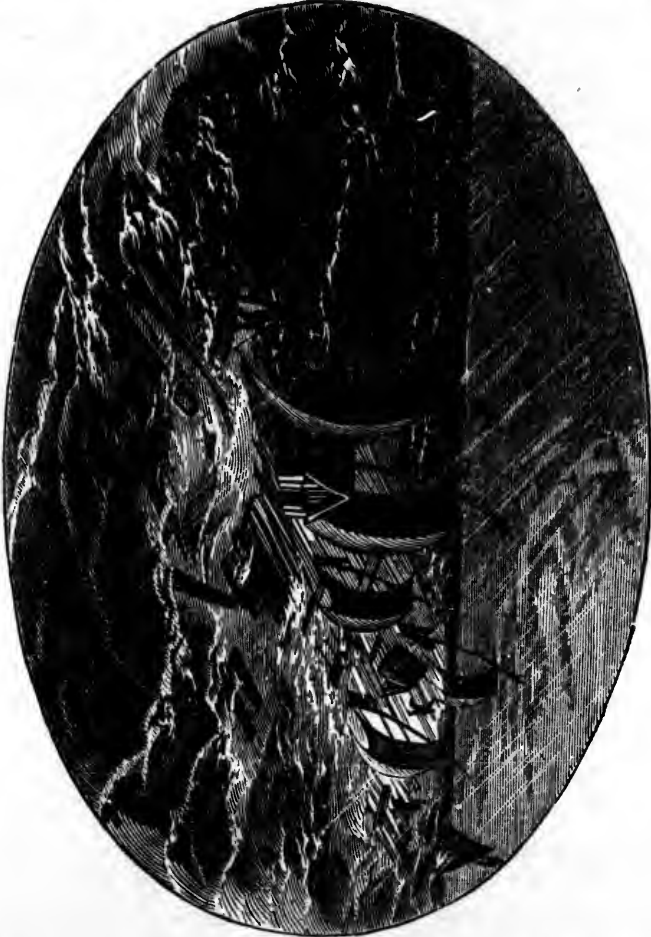
or Sorel, is situated at the junction of the Richelieu, the outlet of Lake Champlain with the St. Lawrence. It is forty-five miles below Montreal, and is the first stopping-place for steamers on their way to Quebec. The town is laid out in the form of a quadrangle, and contains a number of good buildings, the principal of which

are the Roman Catholic and the English churches. The population is about 3000.

LAKE ST. PETER'S

is an expansion of the St. Lawrence, beginning about five miles below Sorel, and extending in length twenty-five miles; its greatest

WRECK OF A RAFT ON LAKE ST. PETER'S.



breadth is nine miles. It is quite shallow, except in a narrow channel, which is now navigable for vessels of six hundred tons, and is in course of being improved, so as to admit vessels of one thousand

tons ascending to Montreal. There are several islands at its western extremity. Port St. Francis is a small village, situated on the south shore of Lake St. Peter's, eighty-two miles below Montreal. It is a place of but little importance.

THREE RIVERS

is situated at the confluence of the rivers St. Maurice and St. Lawrence, ninety miles below Montreal, and the same distance above Quebec. It is one of the oldest settled towns in Canada, having been founded in 1618. It is well laid out, and contains many good buildings,



ROMAN CATHOLIC PARISH CHURCH.



NUNS.

among which are the court house, the jail, the Roman Catholic church, the Ursuline convent, and the English and Wesleyan churches. The population of Three Rivers is about 5500.

BATISCAN

is situated on the north shore of the river, one hundred and seventeen miles below Montreal. It is the last place at which the steamers stop before reaching Quebec. It is a place of little importance.

In passing down the St. Lawrence from Montreal, the country upon its banks presents a sameness in its general scenery, until we approach the vicinity of Quebec. The villages and hamlets are decidedly *French* in character, and are generally made up of small

buildings, the better class of which are painted white or whitewashed, with red roofs. Prominent in the distance appear the tile-covered



CANADIAN HABITANS.

spires of the Catholic churches, which are all constructed in that unique style of architecture so peculiar to that church.



CANADIAN FARMHOUSE.

The rafts of timber afford a highly interesting feature on the



CANADIAN PRIEST.

CANADIAN PEASANT.

river as the traveller passes along. On each a shed is built for the

raftsmen, some of whom rig out their huge, unwieldy craft with gay streamers, which flutter from the tops of poles. Thus, when several



CANADIAN BOATMEN.

of these rafts are grappled together, forming, as it were, a floating island of timber half a mile wide and a mile long, the sight is extremely picturesque; and when the voices of these hardy sons of the forest and the stream join in some of their Canadian boat songs, the wild music, borne by the breeze along the water, has a charming effect. Myriads of these rafts may be seen lying in the coves at Quebec, ready to be shipped to the different parts of the world.

QUEBEC,

until recently the capital of United Canada, is situated on the north shore of the St. Lawrence, in lat. 46 deg. 48 min. north, and long. 71 deg. 15 min. west, from Greenwich. It was founded by Charlevoix, in 1608, on the site of an Indian village, called *Stadacona*. It is the second city in British America, and has a population of more than 45,000. The form of the city is nearly that of a triangle, the plains of Abraham forming the base, and the rivers St. Lawrence and St. Charles the sides. It is divided into two parts, known as the Upper and the Lower Towns. The Upper Town is strongly fortified, and includes within its limits the Citadel of Cape Diamond, which is known to be the most formidable fortress in America. The Lower Town is built upon a narrow strip of land which runs at the base of the cape and of the high ground upon which the Upper Town stands, and the suburbs of St. Roch's and St. John's extend along the river St. Charles and to the Plains of Abraham. Quebec was taken by the British and colonial forces in 1629, but restored to France in 1632; and was finally captured by Wolfe in 1759, and, together with all the French possessions in North America, was ceded to Great Britain at the peace of 1763.

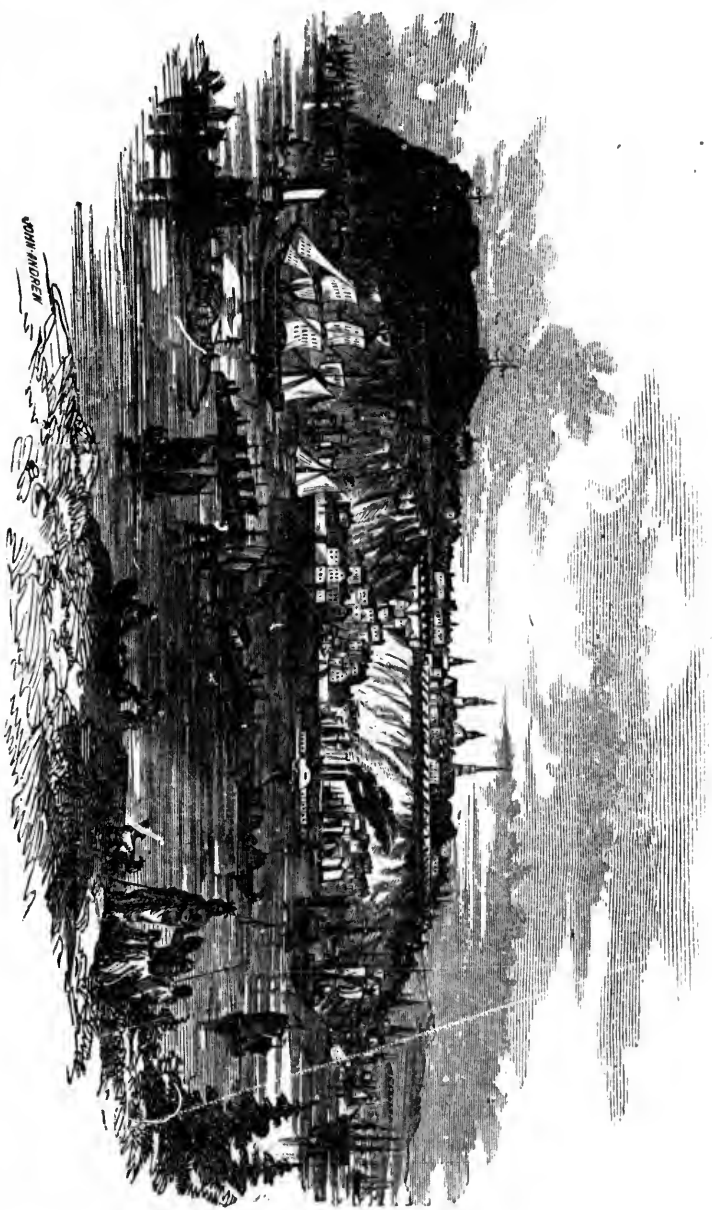
Quebec, including the city and suburbs, contains 174 streets; among the principal of which are the following:— *St. John's Street*, which extends from *Fabrique Street* to *St. John's Gate*, in the Upper

with gay
several
forming,
half a
it is ex-
voices of
stream
songs,
along
Myriads
coves
differ-

on the
north, and
nded by
d *Stada-*
population
that of a
e rivers
into two
e Upper
e Citadel
e fortress
strip of
nd upon
eh's and
Plains of
al forces
captured
ssions in
1763.

streets ;
's Street,
e Upper

CITY OF QUEBEC.



Town, and is occupied chiefly by retail stores; *St. Louis Street* is a handsome and well built street, extending from the Place d'Armes to the St. Louis Gate, and is occupied principally by lawyers' offices and private dwellings; *D'Autueil Street* faces the Esplanade and the ground where the artillery are drilled, and is an elegant street, mostly of private dwellings; *Grand Adlee*, or *St. Louis Road*, outside St. Louis Gate, and leading to the Plains of Abraham, is a pleasant and beautiful street, on which are many elegant villa residences; *St. John's Street*, without, is also a fine street, occupied by shops and private dwellings. The principal street in the Lower Town is *St. Peter's*, on which, and on the wharves and small streets which branch from it, most of the banks, insurance companies, and merchant's offices are situated. There are also several fine streets in the St. John's and St. Roch's suburbs. The appearance of these quarters of the city has been much improved since the great fires of 1845; the builings that were then destroyed having been replaced by others of a very superior description.

Durham Terrace, in the Upper Town, is a platform commanding a splendid view of the river and the Lower Town. It occupies the site of the old castle of St. Louis, which was burnt in 1834, and was erected by the nobleman whose name it bears.

The Public Garden fronts on Des Currieres street, Upper Town, and contains an elegant monument, which was erected to the memory of Wolf and Montcalm, in 1827. The height of this monument is 65 feet; its design is chaste and beautiful, and no stranger should leave Quebec without visiting it.

The Place d'Armes is an open piece of ground, around which the old chateau of St. Louis, the government offices, the English cathedral, and the court house are situated.

The Esplanade is a beautiful piece of ground, situated between D'Autueil street and the ramparts. It is used as a drill ground by the Royal Artillery.

The Citadel, on Cape Diamond, is one of the most interesting objects to visitors; and those who are desirous of seeing it should make application to the town mayor, at the main guard-house, from whom tickets of admission can always be obtained by persons of respecta-

bility. The area embraced within the fortifications of the citadel is more than forty acres.

The line of fortifications, enclosing the citadel and the Upper Town, is nearly three miles in length, and the guns with which they are mounted are mostly thirty-two and forty-eight pounders. There are five gates to the city, three of which, Prescott, Palace, and Hope gates, communicate with the Lower Town, and two of which, St. Louis' and St. John's gates, communicate with the suburbs of the same name. About three quarters of a mile from the city are four Martello Towers, fronting the Plains of Abraham, and intended to impede the advance of an enemy from that direction.

CHURCHES.

The Roman Catholic Cathedral, which fronts upon the Upper Town market-place, is a large and commodious building, but with no great pretensions to architecture. The interior is handsomely fitted up, and has several fine paintings by the old masters, which are well worthy of an inspection. The church will seat 4000 persons. It has a good organ.

St. Patrick's Church, on St. Helen street, Upper Town, is a neat and comfortable building, and is capable of seating about 3000 persons.

St. Roch's Church, on St. Joseph and Church streets, in the St. Roch's suburbs, is a large and commodious building, and will seat over 4000 persons. There are several good paintings in this church.

The Church of Notre Dame des Victoires, on Notre Dame street, is one of the oldest buildings in the city. It has no pretensions to architectural beauty, but it is comfortably fitted up and will seat over 2000 persons.

PROTESTANT CHURCHES.

The English Cathedral is situated between Garden street, St. Ann street, and the Place d'Armes, Upper Town, and is a handsome edifice, 135 by 75 feet, and will seat between 3000 and 4000 persons. This church, which was erected in 1804, has a good organ, and is neatly fitted up in the interior.

Trinity Church, situated on St. Nicholas street, Upper Town, is

a neat cut stone building, erected in 1824. It is 74 by 48 feet, and the interior is handsomely fitted up.

St. Peter's Chapel is situated on St. Vallier street, St. Roch's, and is a neat plain structure, which will seat about 500 persons.

St. Paul's, or *The Mariner's Chapel*, is a small building near Diamond Harbor, designed principally for seamen.

St. Andrew's Church, in connection with the Church of Scotland, is situated on St. Ann's street, Upper Town. The interior is well fitted up, and will seat over 1200 persons.

St. John's Free Scotch Church is situated on St. Francis street, Upper Town. It is a neat plain structure, and will seat about 600 persons.

The Wesleyan Chapel, on St. Stanislaus street, is a handsome Gothic building, erected in 1850. The interior is well fitted up, and it has a good organ. It will seat over 1000 persons.

The Wesleyan Centenary Chapel is situated on D'Artigny street, and is a plain but substantial edifice.

The Congregational Church, on Palace street, Upper Town, is a neat building of cut stone, erected in 1841, and will seat about 800 persons.

The Baptist Church, on St. Ann street, Upper Town, is a neat stone building, and will seat over 400 persons.

The other principal public buildings worthy of notice are:—

The Hotel Dieu, Hospital and Church, which front on Palace street, Upper Town, and, connected with the cemetery and garden, cover an area of about ten acres. The buildings are spacious and substantial, and the Hospital has beds for about sixty sick.

The General Hospital is situated on the river St. Charles, in the St. Roch's ward. The Hospital, Convent, and Church are a handsome quadrangular pile of stone buildings, well adapted to the purpose for which they are designed.

The Ursuline Convent, situated on Garden Street, Upper Town, was founded in 1641. A number of fine paintings are to be seen here, and application for admission should be made to the Lady Superior.

The University of Quebec fronts on Hope street and the Market-place, Upper Town. The buildings, which are of massive gray

stone, form three sides of a quadrangle, and have a fine garden in the rear.

The Court House and the *City Hall* are substantial stone buildings, situated on St. Louis street, and well adapted to their respective purposes.

The Jail is situated at the corner of St. Ann and St. Stanislaus streets, Upper Town, and is a massive stone building, and cost about £60,000. It is in a healthy location, and well adapted to the purpose for which it was designed.

The Jesuit Barracks front on the Upper Town market-place and St. Ann street. They have accommodations for about 1000 men. A battalion of infantry is usually quartered here.

The Marine Hospital, situated on the river St. Charles, in the St. Roch's ward, is intended for the use of sailors and emigrants, and is a beautiful stone building of four stories. It was erected at a cost of £15,000, and will accommodate about 400 patients.

The Lunatic Asylum is situated at Beauport, two and a half miles from Quebec, and is an extensive building, enclosed in a park of about 200 acres.

The Quebec Music Hall is a handsome cut stone edifice, recently erected, situated on St. Louis street, Upper Town.

The Quebec and Richmond Railroad, connecting the city of Quebec with the Montreal and Portland Railroad. A distance of 100 miles is now completed, not only to point Levi, opposite to Quebec, but it is extended to St. Thomas, a distance of twenty miles below Point Levi.

Among the notabilities of Quebec and its vicinity, is the spot where General Montgomery fell, which is on the road from Champlain street to Diamond Harbor, and is pointed out by a board affixed to the cliff above it.

The Plains of Abraham, a little to the west of the city, where the celebrated battle was fought between the British forces, under General Wolfe, and the French forces, under General Montcalm, should be visited by every traveller. A monument, erected on the spot where General Wolfe fell, points out the place where the hottest part of the action occurred.

Spencer Wood, the former residence of the governor-general, about a mile further west, is an elegant country house.

HOTELS.

Russell's Hotel, Palace street, Upper Town, is an excellent establishment. Mr. Russell spares no pains in promoting the comfort of his guests, and his house affords every accommodation that the most fastidious can desire.

There are also several other excellent houses in the city.

The situation of Quebec, and the scenery all around it, are, at every turn, most beautiful and picturesque. The mountains are tolerably high, and present a fine appearance in the distance. There is a very noble view from the citadel, which, as has been before remarked, is the strongest post in America; and, indeed, next to Gibraltar, Quebec is the strongest fortified place in the world. The view from the citadel is connected with associations of the most interesting character. Here may be seen the Plains of Abraham, where, after his bold ascent of the almost impassable heights from the river, Wolfe appeared in arms at morning dawn, and where Montcalm, with equal courage and gallantry, came out to meet him, though not compelled to do so, and where both heroes fell in the sanguinary struggle of that day, — each a bitter loss to his country, each a living name in the annals of their military glory, and both a brilliant evidence of French and British valor. The memorial of mutual valor here erected is at least an instance of generosity in rivals, which it is pleasant to contemplate. If anything could detract from the horrors of war, it would be instances like this.

The city of Quebec is one which it is impossible to approach without pleasure, and to leave without regret. Every locality connected with the place is fraught with interest to the traveller. As the limits of this work permit only general description, visitors will do well to avail themselves of the small city guides, which they can find at the principal hotels.

THE FALLS OF MONTMORENCI.

In taking our departure from Quebec, and on our way down the river, we pass this celebrated cascade. These falls, which are situated in a beautiful nook of the river, are higher than those of Niagara, being more than two hundred and fifty feet; but they are very narrow, being only some fifty feet wide. This place is a very cele-



FALLS OF MONTMORENCY.

t estab-
fort of
e most

are, at
ins are
There
before
next to
. The
most in-
raham,
s from
Mont-
though
quinary
a living
nt evi-
l valor
hich it
e hor-

proach
y con-
. As
rs will
ey can

m the
e situ-
Niag-
very
cele-

brated focus of winter amusements. During the frost, the spray from the falls accumulates to such an extent as to form a cone of some eighty feet high. There is also a second cone of inferior altitude, and it is this of which visitors make the most use, as being less dangerous than the higher one. They carry "toboggins,"—long, thin pieces of wood,—and having arrived at the summit, place themselves on these and slide down with immense velocity. Ladies and gentlemen both enter with equal spirit into this amusement. It requires much skill to avoid accidents; but sometimes people do turable heels over head to the bottom. They generally drive to this spot in sleighs, taking their wine and provisions with them; and upon the pure, white cloth, which nature has spread out for them, they partake of their dainty repast, and enjoy a most agreeable picnic. One does not feel in the least cold, as the exercise so thoroughly warms and invigorates the system. The distance of these falls from Quebec is eight miles.

THE CHAUDIERE FALLS,

on the river Chaudiere, nine miles below Quebec, are also a favorite resort, and are very beautiful and romantic. The river here is about four hundred feet wide, and the height of the falls is one hundred and thirty feet.

THE ISLAND OF ORLEANS,

situated in the river St. Lawrence, immediately below Quebec, is nineteen miles long by five and a half miles wide, and, like the Island of Montreal, is superior in fertility to the main land adjacent to it. Its present population is about six thousand.

THE FALLS OF ST. ANNE

are situated on the river of the same name, on the north side of the St. Lawrence, twenty-four miles below Quebec, and present a variety of wild and beautiful scenery, both in themselves and their immediate neighborhood.

LAKE ST. CHARLES,

thirteen miles north of Quebec, is a favorite resort of tourists, par-

ticularly of those who are fond of angling, as the lake abounds in fine trout.

GROSSE ISLE

is situated thirty miles below Quebec. Here is the Quarantine Station, — a sorrowful place everywhere; but there is an unusually melancholy interest attached to this one, from the fact that no less than six thousand Irish emigrants were buried in one grave during the terrible year of famine in that country. Apart from these saddening recollections, the island is a fair and agreeable spot, and its scenery is very beautiful. Below this island the river becomes wider and wider, and we soon lose sight of land altogether.

MALBAIE,

ninety miles below Quebec, on the north shore, is a large village, where many of the people of Quebec resort for sea bathing.

KAMOURASKA,

on the south shore, ninety miles below Quebec, is also a thriving village, very pleasantly situated, and resorted to as a bathing place.

RIVIERE DU LOUP, EN BAS,

is situated on the south shore, one hundred and fourteen miles below Quebec, and is a rising village, much frequented for sea bathing.

THE RIVER SAGUENAY

falls into the St. Lawrence from the north, at a distance of one hundred and forty miles below Quebec. This noble river takes its rise in Lake St. John, and has a total length of one hundred and twenty-six miles, till it falls into the St. Lawrence. It is navigable for large vessels sixty miles, and at Ha Ha Bay, fifty miles from its mouth, the largest fleet of men-of-war would find a safe and spacious anchorage. The river is very deep, and at its mouth a line of three hundred and thirty fathoms was thrown without finding the bottom; and at the distance of sixty miles from the St. Lawrence, its average depth is from fifty to sixty fathoms. The shores of this river

present some of the grandest and most striking scenery in the world, rising from the water almost perpendicularly to a height of from one thousand to fifteen hundred feet; and in many places a ship of the line might run close to the rocks which overhang it.

TADOOSAC HARBOR

is situated on the northeast side of the river, at its mouth. It is a port of the Hudson's Bay Company, who have a resident and a considerable establishment here.

TETE DU BULE

is a remarkable round mountain, on the north shore, three miles above Tadoosac. A few miles further up are two hills known as the TWO PROFILES, from the strong resemblance which they bear to the human face.

ST. JOHN'S BAY,

twenty-eight miles above Tadoosac, on the south shore, and the mouth of Mackenzie's River on the north shore, are places which contain large lumbering establishments.

ETERNITY POINT AND CAPE TRINITY,

on the south shore, six miles above St. John's Bay, are two immense masses of rock, rising from the water's edge to a height of about fifteen hundred feet, and affording a prospect of solemn and imposing grandeur. STATUE POINT comes next in succession, and then the TABLEAU. This is a perpendicular rock rising to the height of nine hundred feet. The scenery continues very beautiful on to HA HA BAY, which is nine miles in length, and six miles in width, and affords good anchorage for the largest vessels, the average depth being from twenty to thirty-five fathoms.

CHICOUTIRNI

is situated sixty-eight miles above Tadoosac. The Hudson's Bay Company have a post here, and there is a Roman Catholic Church, erected by the Jesuits in 1727. The population is about four hun-

dred, principally French Canadians. The steamboat navigation of the Saguenay ends here, as the river above is obstructed by rapids and falls. Fifty miles above this place is LAKE ST. JOHN, a fine expanse of water of about thirty miles in length, and in the widest part the same in breadth; its superficial area being over five hundred miles.

LAKE ST. JOHN, the SAGUENAY, and the rivers which they receive, abound in excellent fish. The salmon ascends the Saguenay to a considerable distance, and is taken in large quantities and shipped to Quebec.

GEOGRAPHICAL AND STATISTICAL SKETCH OF CANADA.

THE Province of Canada, including both its grand divisions, extends from forty-two to fifty-two degrees of north latitude, and from sixty-four to ninety-two degrees of west longitude, embracing a superficial area of about 330,000 square miles, and having a population of about 2,250,000 souls.

Previous to the year 1791, the whole extent of country now known as Upper and Lower Canada was designated the *Province of Quebec*; but, owing to alleged difficulties in managing the administration of so large an extent of country, it was in that year divided into two provinces, having separate governments, and so remained until 1841, when they were reunited, and now constitute one province only.

Lower Canada, which is considerably the largest province, has an area of 210,000 square miles, and Upper Canada an area of 121,000 square miles; the population being about 1,200,000 in Upper, and 1,100,000 in Lower, Canada.

About two thirds of the population of Lower Canada are of French descent, the remainder consisting of English, Irish, Scotch, Germans, and Americans, or their descendants. In Upper Canada

the population is made up of colonists, or the descendants of colonists, from the British Islands; of the descendants of American loyalists who emigrated to Canada after the revolutionary war; and, in a few localities, there are settlements of Germans and Dutch. In Lower Canada about four fifths of the people belong to the Roman Catholic Church, the remainder consisting of members of the different Protestant churches, and a few Jews; while in Upper Canada about four fifths of the people are Protestant, and the remainder Roman Catholic.

At the time of the conquest of Canada, in 1760, the entire population was estimated at 70,000; and a glance at the following synopsis, from the official returns of the different periods mentioned, will show the rapid advance which the country has made since that time.

LOWER CANADA.		UPPER CANADA.	
Population in 1763,	70,000	Population in 1763,	12,000
“ “ 1814,	335,000	“ “ 1814,	95,000
“ “ 1823,	427,000	“ “ 1824,	151,000
“ “ 1831,	512,000	“ “ 1832,	261,000
“ “ 1844,	699,000	“ “ 1842,	486,000
“ “ 1848,	770,000	“ “ 1848,	721,000
“ “ 1850,	791,000	“ “ 1850,	791,000
“ “ 1851,	890,000	“ “ 1851,	952,000
Estimated in 1854,	1,000,000	Estimated in 1854,	1,200,000

The total population of Canada, according to origin and religion, by the census of 1852, was as follows:—

Of British origin or descent, in both Provinces,	1,063,743
Of French origin or descent, in both Provinces,	695,945
Of other origin or descent, in both Provinces,	82,577

Total of both Provinces, 1,842,265

Protestants in both Provinces,	927,253
Roman Catholics in both Provinces,	914,561
Jews in both Provinces,	451

Total in both Provinces, 1,842,265

olonists,
loyalists
n a few
Lower
Catholic
nt Prot-
a about
Roman

re popa-
ving sy-
ned, will
at time.

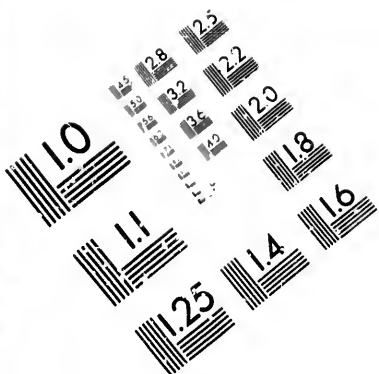
12,000
95,000
151,000
261,000
486,000
721,000
791,000
952,000
1,200,000

religion,

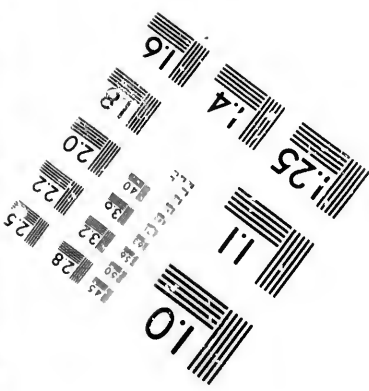
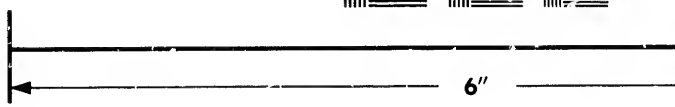
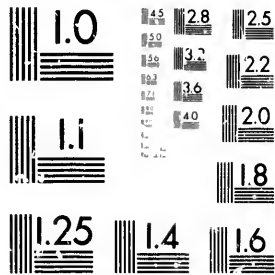
963,743
995,945
82,577
42,265
27,253
14,561
451
2,265





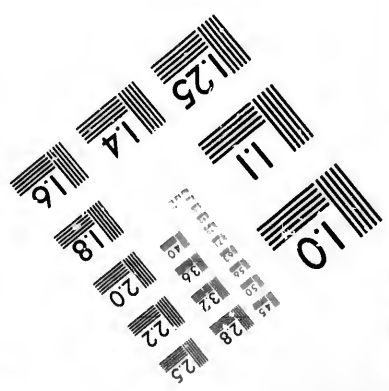
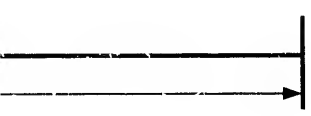
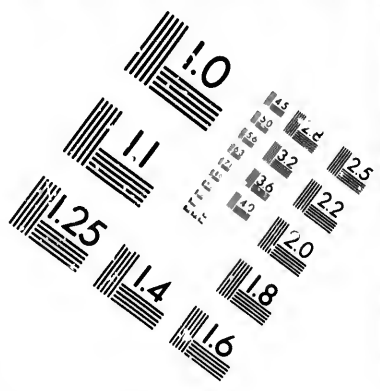


**IMAGE EVALUATION
TEST TARGET (MT-3)**



**Photographic
Sciences
Corporation**

23 WEST MAIN
WEBSTER, N.Y.
(716) 872-4



MAIN STREET
N.Y. 14580
372-4503

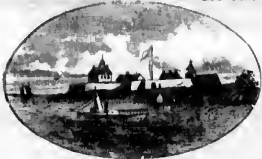


FORT MASSASAUGA

LAKE ONTARIO.

180 MILES IN LENGTH, AND
40 IN AVERAGE WIDTH.

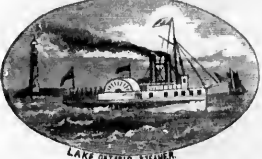
MEAN DEPTH 500 FEET. HEIGHT ABOVE THE SEA.
163 FEET. AREA 6,300 SQUARE MILES.



FORT NIAGARA



QUEENSTON SUSPENSION BRIDGE.



LAKE ONTARIO STEAMER.



LAKE ONTARIO FROM NIAGARA RIVER.



CAPE ST. VINCENT R.R. DEPOT.



KINGSTON

CAPE VINCENT

WOLF I.

CLAYTON

CORNELIA



VIEW AMONG 1000 IS.



VIEW AMONG 1000 ISLANDS

ALEXANDRIA



FORT HENRY

WATERLOO TOWER, GEDAR I.S.

GARANOGGUE.



LIGHTHOUSE

VIEW OF THE 1000 IS.

GRAND TRUNK RAILWAY

1000 ISLANDS

WATERLOO TOWER

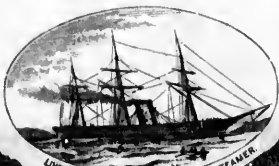
ALEXANDRIA

LAKE ST. PETER

LENGTH 75 MILES.
WIDTH 9.

RIVER ST. FRANCIS.

WRECK OF A RAFT ON LAKE ST. PETERS.



LIVERPOOL AND MONTREAL SCREW STEAMER.

FOND DU SAC.

BE'CANOUR

THREE RIVERS.

RIVER ST. MARYE.

HEAD OF TIDE WATER
30 MILES FROM QUEBEC
730 FROM THE ATLANTIC OCEAN.



FRENCH-CANADIAN FARM HOUSE.

MADOLET

SALES

BATISSE

ST. MARIE.

GENTILLY.



ROYAL CATHOLIC PARISH CHURCH.

ST. PIERE.

BE'NELORE.

ST. ANNE.



CANADIAN PRIEST.

PORT AUX TREMBLES.

HAMMOND

MORRISTOWN

BROOKVILLE

OSWEGATONIC RIVER

ODDENSBURGH

R.R. TO ROUSE POINT

PHIPPS COTT

O.R.

R.R. TO

OTTAWA CITY, 83 MILES

WINDMILL POINT



WINDMILL POINT.

GALLOPES I. & RAPIDS

LIBBON

POINT CARDINAL



GALLOPES RAPIDS.

WADDINGTON

POINT IRONWOOD

RAPID PLAT. A.

MATILDA

GALLOPES CANAL, 2 MILES, 3 LOCKS & 1 FT.

RAPID BELLAU

CANAL & LOCK, 4 MILES.

MARIATOWN

YONKER

G.T.R.

OSWEGATONIC RIVER



CHRYSLER'S FARM.

FARRERS PT. CANAL

1 GENTILLY.

ST. PIERRE.



ROMAN CATHOLIC PARISH LAUREN.

DESCHAMPEL.

POINT A LA TREMBLE.

ST. MARIE.

ST. ANNE.



CANADIAN PRIEST

LOTHIMER.
WATER NOT PERFECTLY SALT
FOR A DISTANCE OF
30 MILES BELOW QUEBEC.

ST. CHARLES.



NUNS

ST. AUGUSTIN.

ST. ANTOINE.

GRAND TRUNK R.R. BRIDGES
WHILE BRIDGES WERE OPEN.



LORRETTE BLOAN.

POINT LEVI.

WOLF MONUMENT.
PLAINS OF ABRAHAM.



CULF AND RIVER NAVIGATION
UPWARDS OF 100 MILES FROM
QUEBEC TO THE ATLANTIC OCEAN

DRAWN BY ALFRED R. WAUD,
BOSTON, U.S.

ENGR. BY JOHN ANDREW,
BOSTON, U.S.

LEWISTON



YOUNGSTOWN

FROM NIAGARA
FALLS 14 MILES

THE NIAGARA

VIEW OF



FORT MASSASAUGA

NIAGARA TOWN

FORT MASSASAUGA

LAKE ONTARIO.

180 MILES IN LENGTH, AND
40 IN AVERAGE WIDTH.

MEAN DEPTH 500 FEET, HEIGHT ABOVE THE SEA,
574 FEET. AREA 6,330 SQUARE MILES.



FORT NIAGARA



QUEENSTON SUSPENSION BRIDGE.

ISLAND OF 3 CHANNELS.

FARRERS FALLS CANAL
3 1/2 MILES LONG
1 LOCK



ENTRANCE TO CORNWALL CANAL.



DICKENSONS LANDING.



RAIL DESCENDING THE RAPIDS.
LONG SAULT I.



LONG SAULT RAPIDS.



ST. REG'S INDIANS.

CORNWALL CANAL.
11 1/2 MILES LONG.
1 LOCKS.
40 L. FT.
BARNHARTS I.



VIEW IN THE LONG SAULT.

CORNWALL I.

CORNWALL.

INDIAN VILLAGE
OF ST. REGES.

LINE BETWEEN
UNITED STATES
AND CANADA.

LAT 45°

GRAND TRUNK R.R.

LAKE ST. FRANCIS.
LENGTH 28 MILES.
WIDTH 1 1/2.

LANCASTER.

GRAND I.

COTEAU DU LAC.

BEAURNAIS CANAL.
LENGTH 11 1/2 MILES.
8 LOCKS.



CEDAR RAPIDS.



CASCADES FROM A TRAMWAY TO
BEAURNAIS CANAL.

LAKE OF THE
TWO MOUNTAINS.
LENGTH 25 MILES
WIDTH 1.702.

TAMIE BRIDGE
AND RAPIDS

BEAURNAIS

FERRAT I.

LAKE ST. LOUIS.
LENGTH 12 MILES.
WIDTH 6.

ST. CLAIR

FLOATING LIGHT.



NUN'S I.



CAUGHNAWAGA VILLAGE

LACHINE RAPIDS.

FLOATING LIGHT.

LACHINE

GRAND TRUNK R.R.

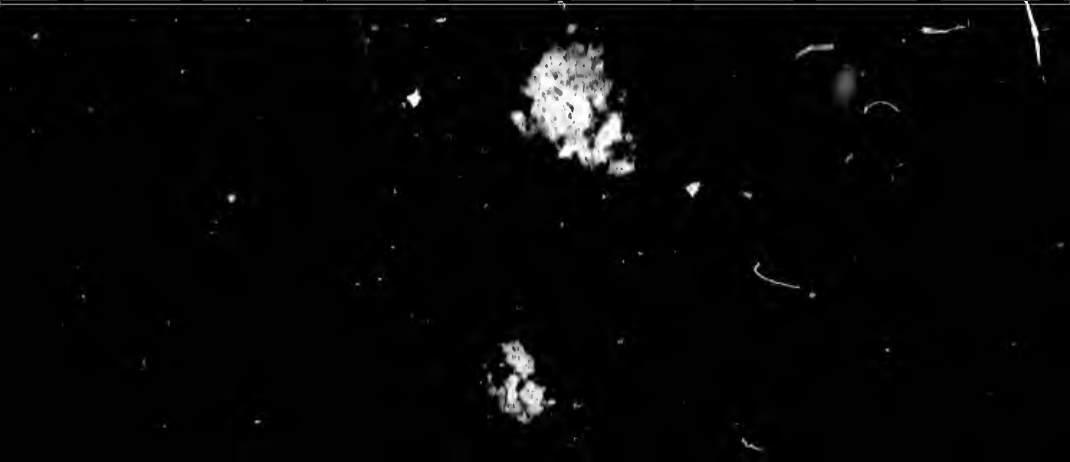
LACHINE CANAL
LENGTH 2 1/2 MILES.
5 LOCKS.

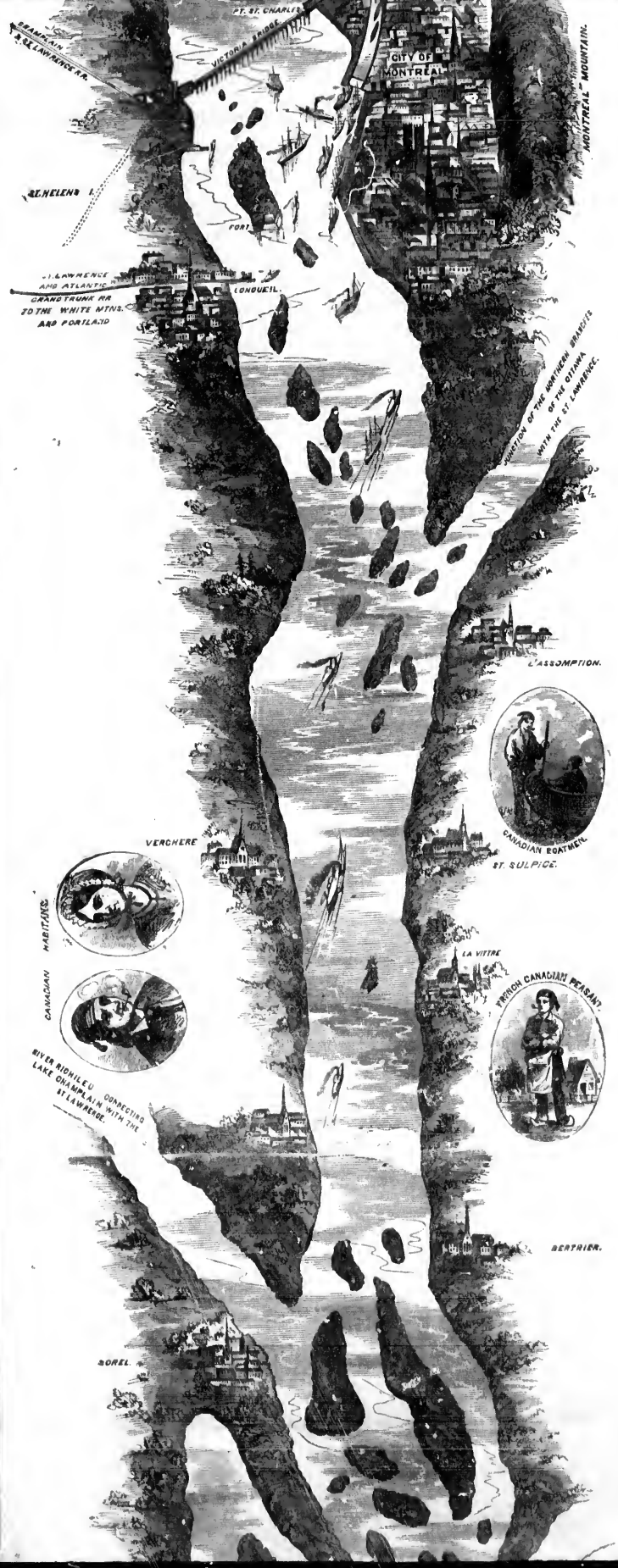


MONTREAL & VICTORIA BRIDGE.

ST. CHARLES







PT. ST. CHARLES

CITY OF MONTREAL

MONTREAL MOUNTAIN

REHELENS I.

PORT

J. LAWRENCE AND ATLANTIC GRAND TRUNK RR TO THE WHITE MTS. AND PORTLAND

CONQUEIL.

POSITION OF THE MONTREAL BRIDGE WITH THE ST. LAWRENCE.

L'ASSOMPTION.



CANADIAN BOATMEN. ST. SULPICE.

VERCHERE



MARITIMS



CANADIAN

RIVER RICHILIEU CONNECTING LAKE CHAMPLAIN WITH THE ST. LAWRENCE.

LA VITTE



PROVIN CANADIAN PEASANT.

BERTRIER.

BOREL.

