

**CIHM  
Microfiche  
Series  
(Monographs)**

**ICMH  
Collection de  
microfiches  
(monographies)**



**Canadian Institute for Historical Microreproductions / Institut canadien de microreproductions historiques**

**© 1997**

## Technical and Bibliographic Notes / Notes techniques et bibliographiques

The Institute has attempted to obtain the best original copy available for filming. Features of this copy which may be bibliographically unique, which may alter any of the images in the reproduction, or which may significantly change the usual method of filming are checked below.

- Coloured covers / Couverture de couleur
- Covers damaged / Couverture endommagée
- Covers restored and/or laminated / Couverture restaurée et/ou pelliculée
- Cover title missing / Le titre de couverture manque
- Coloured maps / Cartes géographiques en couleur
- Coloured ink (i.e. other than blue or black) / Encre de couleur (i.e. autre que bleue ou noire)
- Coloured plates and/or illustrations / Planches et/ou illustrations en couleur
- Bound with other material / Relié avec d'autres documents
- Only edition available / Seule édition disponible
- Tight binding may cause shadows or distortion along interior margin / La reliure serrée peut causer de l'ombre ou de la distorsion le long de la marge intérieure.
- Blank leaves added during restorations may appear within the text. Whenever possible, these have been omitted from filming / Il se peut que certaines pages blanches ajoutées lors d'une restauration apparaissent dans le texte, mais, lorsque cela était possible, ces pages n'ont pas été filmées.
- Additional comments / Commentaires supplémentaires:

L'Institut a microfilmé le meilleur exemplaire qu'il lui a été possible de se procurer. Les détails de cet exemplaire qui sont peut-être uniques du point de vue bibliographique, qui peuvent modifier une image reproduite, ou qui peuvent exiger une modification dans la méthode normale de filmage sont indiqués ci-dessous.

- Coloured pages / Pages de couleur
- Pages damaged / Pages endommagées
- Pages restored and/or laminated / Pages restaurées et/ou pelliculées
- Pages discoloured, stained or foxed / Pages décolorées, tachetées ou piquées
- Pages detached / Pages détachées
- Showthrough / Transparence
- Quality of print varies / Qualité inégale de l'impression
- Includes supplementary material / Comprend du matériel supplémentaire
- Pages wholly or partially obscured by errata slips, tissues, etc., have been refilmed to ensure the best possible image / Les pages totalement ou partiellement obscurcies par un feuillet d'errata, une pelure, etc., ont été filmées à nouveau de façon à obtenir la meilleure image possible.
- Opposing pages with varying colouration or discolourations are filmed twice to ensure the best possible image / Les pages s'opposant ayant des colorations variables ou des décolorations sont filmées deux fois afin d'obtenir la meilleure image possible.

This item is filmed at the reduction ratio checked below /  
Ce document est filmé au taux de réduction indiqué ci-dessous.

10x		14x		18x		22x		26x		30x
<input type="checkbox"/>	<input type="checkbox"/>	<input type="checkbox"/>	<input type="checkbox"/>	<input type="checkbox"/>	<input type="checkbox"/>	<input checked="" type="checkbox"/>	<input type="checkbox"/>	<input type="checkbox"/>	<input type="checkbox"/>	<input type="checkbox"/>
12x		16x		20x		24x		28x		32x

The copy filmed here has been reproduced thanks to the generosity of:

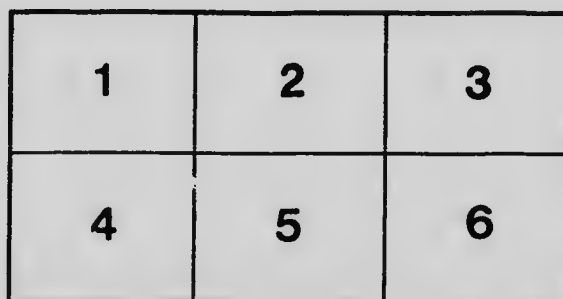
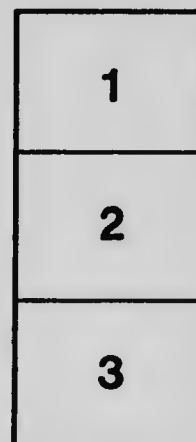
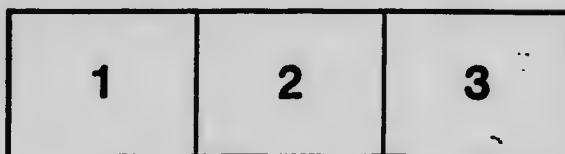
Library  
Agriculture Canada

The images appearing here are the best quality possible considering the condition and legibility of the original copy and in keeping with the filming contract specifications.

Original copies in printed paper covers are filmed beginning with the front cover and ending on the last page with a printed or illustrated impression, or the back cover when appropriate. All other original copies are filmed beginning on the first page with a printed or illustrated impression, and ending on the last page with a printed or illustrated impression.

The last recorded frame on each microfiche shall contain the symbol  $\rightarrow$  (meaning "CONTINUED"), or the symbol  $\nabla$  (meaning "END"), whichever applies.

Maps, plates, charts, etc., may be filmed at different reduction ratios. Those too large to be entirely included in one exposure are filmed beginning in the upper left hand corner, left to right and top to bottom, as many frames as required. The following diagrams illustrate the method:



L'exemplaire filmé fut reproduit grâce à la générosité de:

Bibliothèque  
Agriculture Canada

Les images suivantes ont été reproduites avec le plus grand soin, compte tenu de la condition et de la netteté de l'exemplaire filmé, et en conformité avec les conditions du contrat de filmage.

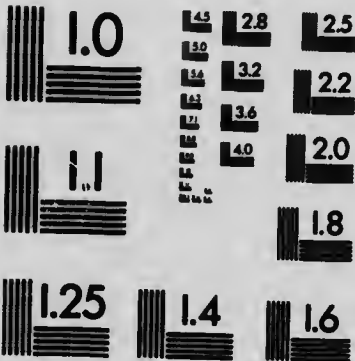
Les exemplaires originaux dont la couverture en papier est imprimée sont filmés en commençant par le premier plat et en terminant soit par la dernière page qui comporte une empreinte d'impression ou d'illustration, soit par le second plat, selon le cas. Tous les autres exemplaires originaux sont filmés en commençant par la première page qui comporte une empreinte d'impression ou d'illustration et en terminant par la dernière page qui comporte une telle empreinte.

Un des symboles suivants apparaîtra sur la dernière image de chaque microfiche, selon le cas: le symbole  $\rightarrow$  signifie "A SUIVRE", le symbole  $\nabla$  signifie "FIN".

Les cartes, planches, tableaux, etc., peuvent être filmés à des taux de réduction différents. Lorsque le document est trop grand pour être reproduit en un seul cliché, il est filmé à partir de l'angle supérieur gauche, de gauche à droite, et de haut en bas, en prenant le nombre d'images nécessaire. Les diagrammes suivants illustrent la méthode.

# MICROCOPY RESOLUTION TEST CHART

(ANSI and ISO TEST CHART No. 2)



**APPLIED IMAGE Inc**

1653 East Main Street  
Rochester, New York 14609 USA  
(716) 482 - 0300 - Phone  
(716) 288 - 5989 - Fax



Bulletin No. 5 (Revised)

AGRICULTURE  
RECEIVED  
November 10 1910

23042 INSTITUTE BRANCH

# "The Farm Garden"

By F. W. LRODRICK  
Professor of Horticulture and Forestry



A MANITOBA FARM GARDEN

Manitoba Agricultural College  
Winnipeg, Canada

Published by the Authority of - HON. GEO. LAWRENCE, Minister of Agriculture and Immigration

MANITOBA AGRICULTURAL COLLEGE,  
Winnipeg, Canada,  
November, 1913.

TO THE HON. GEORGE LAWRENCE,  
*Minister of Agriculture and Immigration,*  
Winnipeg, Manitoba.

Sir :—I beg to present herewith Bulletin No. 5 (Revised) of the Manitoba Agricultural College, "The Farm Garden," by Prof. F. W. Brodrick. It is hoped that this publication will be of great value to the farmers of Manitoba.

Yours very truly,

W. J. BLACK,  
*President.*

# “The Farm Garden”

---

The object of this bulletin is to impress upon the farmers of the Province of Manitoba the advisability of growing more garden vegetables. Carefully compiled statistics have demonstrated that, yearly, large quantities of vegetables are being imported from outside sources to supply the demand of the local markets of the Province. This should not be. Besides, many farmers of the Province do not even grow sufficient vegetables to supply the demand of their own household.

In a country where practically all classes of vegetables can be grown with such good success as they can in Manitoba, there is no reason why every farmer's household should not be provided with a liberal supply of fresh vegetables, and sufficient grown in excess to meet the demands of the local markets.

The liberal use of vegetables will do much to reduce the cost of living, and besides can be made to supply in a palatable form a most healthful class of human food. By exercising care in the selection of varieties, and by carefully arranging the dates of sowing, a liberal supply of succulent vegetables can be provided for practically all seasons of the year. The variety of crop that will be grown will depend very largely upon the personal tastes of the grower and upon the amount of time he will have to devote to this phase of his farm work.

## SIZE

One of the first considerations in planning a garden is to determine the size. The important point in connection with the size is that it be large enough to meet the needs of the household. Sufficient space should be provided to give a successive supply of vegetables throughout the entire growing season. Conditions will vary somewhat, but one-half acre of well-prepared soil, carefully planned, should provide sufficient vegetables for the ordinary household.

## LOCATION

The location of the garden is also an important consideration. Convenience of access, thorough drainage, suitability of soil and exposure are points that should receive consideration in the selection



of the site of the farm garden. Good drainage and a suitable soil are probably the most important considerations. The soil, if possible, should be of a sandy texture and the land should slope preferably slightly to the south or southeast.

### ARRANGEMENT

Much can be done to simplify the work of caring for a garden if the arrangement of the crops is carefully planned. Perennial crops such as asparagus and rhubarb should be placed in some place where they will not interfere with the cultivation of the other crop of the garden. The vine crops such as squash, pumpkins, cucumbers, marrows, etc., should also be placed by themselves.

If properly planned, a considerable part of the heavy work of a farm garden can be done with the aid of the horse and cultivator. The coarser garden crops such as peas, beans, corn, tomatoes, cabbage, cauliflower, potatoes and such crops may be so arranged and planted at such distances (say 30 inches apart) that the work of cultivation may be done with the horse and cultivator.

In planning the garden it is advisable to have the rows as long as possible so that the work with horse and cultivator can be carried on as easily as possible. The root crops such as carrots, parsnips, beets, salsify and onions give better results if grown more closely together and cultivated by hand. Eighteen inches is a good distance apart to plant crops of this class. A small Planet Junior cultivator is very valuable for work of this nature.

### SOIL

A good garden soil should contain a liberal amount of sand. A moderate sandy loam makes an excellent soil for vegetables. The quality of vegetables depends, to a very considerable extent, on the quality of soil on which they are grown, as vegetables of much finer texture are produced on sandy soils than on those of a clayey nature. Sandy soils will stimulate a much earlier growth than the heavier clay soils. In districts where the soil is of a clayey nature, the lightest land obtainable should be selected for the garden.

### CULTIVATION

The soil for vegetables can not be too well prepared. Many garden seeds are very fine and require a finely-prepared soil to give a good germination. For this reason it is better to use the same land, providing it is properly enriched for garden purposes, for a number of years. The continued cultivation that is given the land brings it into excellent condition for the purpose of gardening.

Practically all garden crops are benefited by a thorough cultivation of the soil during the season that the crop is growing. The cultivation serves to destroy weeds, conserve moisture, which is very essential for garden crops, and maintain a finer physical condition of the soil, which is also very essential for the successful production of garden crops. This cultivation should be repeated at intervals of a week or two weeks throughout the entire growing season and may be carried on successfully with a hoe and rake or light garden cultivator.

### GARDEN SEEDS

One of the difficulties experienced in gardening is getting good seed, and much of the success of any garden depends on the quality of seed used. The seedsmen are not always to blame for this state of affairs, as in many cases the growers of the seed themselves are responsible. As a rule the best results are obtained from new, plump, well-matured, vigorous seed. The most important points to consider in connection with seed are its viability or germinating power and purity as to variety. Many seeds lose their viability in a few years, and a wise precaution is to test the viability of garden seeds before sowing. The matter of purity as to variety is one that has to be left to the honesty of the seedsmen.

### THINNING

In sowing garden seeds, and especially if there is a possibility of the seed being old, it is well to sow an abundance of seed. This thick sowing is likely to ensure a much more reliable stand of plants than where a small quantity of seed is sown. The excessive plants should be removed when the plants are young, usually when they are from two to three inches in height.

### TRANSPLANTING

On account of the shortness of the growing season it is necessary to sow the seed of some garden crops such as celery, cabbage, cauliflower and tomatoes in seed boxes in the house or hotbeds outside early in the season that they may be started and transplanted to the permanent grounds later on. This gives them a much longer growing season and allows them to come to maturity at the time they should be harvested. Seed of celery may be sown as early as the first of March or the latter part of February.

Cabbage and cauliflower seed may be sown later, or about the first of April. The main essentials in growing plants is to attend carefully to the watering and heat. The soil should be kept moderately moist and an average temperature of 55 to 60 degrees should simulate

good healthy growth. To get the best results it may be necessary to transplant the young plants from the seed boxes to other boxes at least once before planting out permanently.

The plants may be made much more vigorous and be kept in better condition for permanent transplanting if they are gradually exposed to the outside air for some time before being permanently planted out. This causes the young plants to become stocky and resistant to outside conditions and will give good results when finally planted.

The final transplanting may be done about the first of June. If possible this work should be done in the evening or on a cloudy day. It is a good plan to give the young plants a thorough watering after transplanting and cover them over for a few days with some coarse litter to protect them from the excessive heat of the sun until they become established in the soil.

### STORING

The keeping qualities of vegetables depend very largely on the way in which they are stored. Most garden vegetables keep best when kept at a temperature slightly above freezing. Roots such as carrots, parsnips and turnips can be stored successfully in bins or boxes packed in dry sand. Celery, which is a difficult vegetable to store, may be kept very well by placing the bunches upright in a cool cellar and packing sand about the roots. Cabbage should be stored so that the air will circulate freely about the heads and thereby prevent decay.

Decaying vegetables should be removed from the cellar as soon as possible, as they frequently cause very disagreeable odors which may be injurious to the health of the members of the household.

## Garden Crops

A few notes are given on some of the garden crops that may be successfully grown by the Western farmer, together with suggestions as to the best varieties to use.

### ASPARAGUS

At the beginning of the vegetable alphabet is found asparagus. It should be found also in every garden in the West, as it is one of the easiest to grow, and never fails. While some advocate trenching and heavy manure before planting, it is sufficient if our soil is plowed or dug 12 inches deep, the roots planted in rows 30 inches apart and two feet apart in the rows. Each fall, after frosts set in, a heavy coat of well-rotted manure should be applied, and in the spring dug in about the roots. For asparagus, a bed should be set apart by itself, as the one set of roots will continue to produce abundantly for years. Conover's Colossal, Palmetto, and Barr's Mammoth are good varieties.

### BEANS

Beans are not a sure crop. They are easily injured or killed at any stage of their growth, and should never be sown too early, and only the earliest varieties grown. They are never out of danger if plants are out of the ground before June 15th. Dwarf Extra Early, Early Six Weeks and Extra Early Refugee are among the best varieties.

### BEETS

This vegetable can be sown as early in the spring as the soil permits. The seed is slow to germinate and will stand a heavy frost. In heavy soil the turnip variety is best, as it grows chiefly on the surface. For light soil the long varieties are better suited, and are rather better keepers than the round ones, though both varieties can be kept during the winter and spring by packing in a box or barrel, mixing in dry earth and covering over with three or four inches of earth. Early Eclipse, Early Blood Red are good round varieties, and Long Blood Red and Covent Garden Half Long are good long varieties for lighter soil. Sow seed rather thickly and two inches deep. Thin out plants in rows four to six inches apart.

## CABBAGE

Cabbage is easily grown, but for early use should be sown either in a box and kept in a heated room, or sown in a hotbed early in April. When seed is sown either way, the plants when one or two inches above the soil should be transplanted into a box or hotbed, and then planted in a garden. Before planting in the open the plants should be hardened by exposing to the air and sun for a week or 10 days. Plants can safely be put out after May 20th, but generally do best about June 1st, as rain usually starts then.

A few early varieties should be planted for early use, but these are not good keepers and usually crack open and spoil while growing. In this class Early Etamps and Early Jersey Wakefield are satisfactory, and for very early use the Copenhagen Market is good. For fall use Early Summer and Vandergaw can be planted, and for winter use Large Flat Drumhead and Autumn King are extra good.

In connection with the growing of cabbage, cauliflower and other plants, cut worms are very destructive. Poisoned bran, one part Paris green to 50 parts moistened bran and a little molasses—not too wet—scattered around the plants, and repeated occasionally, is a reliable remedy.

## CAULIFLOWER

Cauliflower can be grown in much the same manner as cabbage. Only very few of the early cauliflower should be planted at one time, as the heads soon spoil. Planting at intervals of two weeks will prolong the season. Early Snowball, Early Dwarf Erfurt and Early Paris are good and sure varieties.

Late varieties, such as Autumn Giant and Le Normand, seldom mature, but can be pulled before severe frost takes place, placed upright in cellar or other frost-proof place in one or two inches of earth, and the roots covered two inches deep and kept moist, but not wet. The heads will mature and produce as good cauliflower as in the open, through November and December.

## CARROTS

Carrots should be sown in the spring as early as the soil permits. Some advocate fall seeding, but the crop is as good from early spring seeding and safer. Any of the ordinary varieties of garden carrots do very well. Chantenay, Danvers Half Long and Scarlet Intermediate are very good. Sow one inch deep, and thin three to five inches apart. Thorough cultivation should be carried on during the summer with a Planet Junior or single-horse cultivator.

## CELERY

Celery is rather difficult to grow successfully, especially when water is not available. The trench system has been found the best, although it entails a little more labor than planting on the level or in frames. The advantage of the trench is that the roots do not dry out as fast as in either of the other two ways. Less water is required and blanching can be done better.

A trench 14 inches wide and 18 inches deep is sufficient. At the bottom, six inches of well-rotted manure is placed, then six inches of top soil. In this the celery is planted six inches apart, and as the plants grow, earth is placed about them.

Celery can also be grown in a frame placed on the ground in which the soil is deeply dug and well manured. Plant six inches apart each way, and water, taking care not to wet the crown, and cover with coarse straw or litter for a few days until they become established.

Celery must be sown early in box or hotbeds, as the seed is slow in germinating and the plants are very slow growers at first. Transplant in box or hotbed, giving two inches space to each plant. Plant in the ground after June 1st.

Golden Self-Blanching is good for early use, while for later use White Plume and Giant Pascal are good varieties.

## CORN

Corn is a crop that requires a good soil and thorough cultivation to give good returns. Sow seed about June 1st in well-prepared land in rows three feet apart. Keep land thoroughly cultivated between rows during the growing season. Early varieties such as the Malakoff, White and Red Cob Cory and Squaw corn are most satisfactory for table use.

## LETTUCE

Lettuce is an excellent vegetable to force for table use and should be sown at intervals of two weeks from May 1st to July 1st. It is of the easiest culture and may be sown on any good land providing the land is well prepared. Big Boston, Grand Rapids, and Silver Ball are good varieties for table use.

## LEEK

Garden Leeks are palatable garden vegetables and require about the same land and culture as onions. More satisfactory returns are

obtained if the seed is started in seed boxes during April and the seedlings transplanted to the field early in June. The Giant Musselburgh leek is a satisfactory variety.

### ONIONS

Onion seed may be sown in the fall just before frost sets in. It is, however, better sown early in the spring; or it can be sown like cabbage seed, in box or hotbed, and transplanted to the garden, and no class of plants is so easy to transfer or pays better for the trouble. The soil for onions requires to be firm or even hard. Sow one inch deep, tramp well down, and thin plants three to five inches apart. During the growing season keep the land in a good state of cultivation gradually working the soil away from the bulbs as the season advances. Large Red Wethersfield, Early Australian Brown, Danvers' Yellow Globe, Red Globe and Giant Silverskin are some of the best croppers and keepers.

### PARSNIPS

This is a very acceptable table vegetable, easily grown and a long keeper. Sow early in the spring, one inch deep, and thin to five inches apart. Parsnips should receive about the same culture as carrots, that is, keep the land in good condition between the rows during the season of active growth. In some localities parsnips are left in the ground all winter, but in the West it is advisable to lift and store as carrots or beets. Satisfactory varieties are Manitoba Prize, Hollow Crown and Student.

### POTATOES

Very many fail in growing potatoes successfully year after year, chiefly from planting in soil made dry in the preparation. Potato sets, if not cut large, dry rot when planted in dry soil. Only whole potatoes will germinate when planted under such conditions, and many of these die after germination. Potatoes require a loose, mellow soil, moist but not too wet when planted, and this is available each spring only on fallowed land. Sets, cut fairly large, with two eyes in each, planted in rows 30 inches apart, three or four inches deep and 14 inches apart in rows, usually give the largest crop and best tubers. From the 15th to the 25th of May is a good season for planting the main crops of potatoes.

A few early potatoes should be planted each year, but the main crop should be one of the medium early varieties. The early varieties seldom yield like the others, caused by dry weather when the roots are forming.

There are many good commercial varieties of potatoes on the market, and it is difficult to say what varieties are really best for general conditions.



For early use such varieties as the Bovee and the Beauty of Hebron, and for later use the Late Puritan, Dreer's Standard and Money Maker, Carman No. 1 and Manitoba Wonder are to be recommended.

### GARDEN PEAS

All varieties of garden peas advertised in Canadian catalogues mature as a rule if sown from May 10th to 20th. The very early sorts are not equal in flavor to the medium early, and when only one or two sorts are sown, the latter should be chosen. Sow rather thickly and three inches deep. During growing season keep land between rows well cultivated with a one-horse garden cultivator.

Alaska, Wm. Hurst, Surprise, Extra Early, are among the best early varieties. Stratagem, Yorkshire, Hero, Queen, Dwarf Telephone and Nott's Excelsior are very good medium varieties. For succession of green peas sow 10 days apart from May 1st to June 1st.

### RADISH

Radishes are very desirable garden vegetables and may be grown on almost any soil with the easiest culture. Plan for a succession of crop by sowing at short intervals during early part of summer. All varieties are good. White Tipped Scarlet Gem, French Breakfast and Olive Scarlet are extra good.

### RHUBARB

Rhubarb seed can be sown in cold frame or garden from 15th to the end of May, and transplanted the following spring. The bed for rhubarb should be dug 12 to 14 inches deep, with all the well-rotted manure mixed in that is possible. Each fall a heavy coating of the manure should be applied as a protection and dug in about the roots in the spring.

Tottel's Improved and Victoria are good varieties.

### TOMATOES

Tomatoes seldom ripen unless protected from cold nights after August 15th. Seed should be sown in box or hotbed early in April, transplanted about June 1st, and protected for two or three weeks after transplanting. Cutting back the tops toward the end of the growing season hastens the ripening of tomatoes.

Spark's Earliana is the safest variety to grow.



**TURNIPS**

All varieties of garden turnips do well in this country, but for quality and keeping no variety approaches the field variety, Purple Top Swede, and this should be the main reliance, except a few of the garden varieties, such as Extra Early Milan or Early White Flat Dutch, for early use. Sow from May 15th to 20th, one inch deep. Thin eight to twelve inches apart.

**CITRON, CUCUMBER AND SQUASH**

Citron, cucumber, squash, pumpkin, etc., can be started in a box or hotbed April 20th to 25th, and planted in garden June 1st. Protection at nights for two or three weeks requires to be given plants set out.

Satisfactory varieties are: citron, Preserving; cucumber, Short Green, White Spine, Giant Peru and Chicago Pickling; squash, Crook-neck, Bush Marrow, and for late use the Hubbard or Golden Hubbard.

ACKNOWLEDGEMENTS

In the preparation of this bulletin I beg to acknowledge valuable assistance received from a paper prepared by Mr. Angus MacKay, late of the Experimental Farm, Indian Head, and for valuable suggestions offered by Prof. S. A. Bedford, Deputy Minister of Agriculture, Parliament Buildings, Winnipeg.

F. W. BRODRICK.

Agricultural College,  
November, 1913.



## LIST OF BULLETINS

*Prepared by Manitoba Agricultural College, Winnipeg, Canada*

No.	Title	Author
1.	"Classification of the Horse".	PROF. W. H. PETERS
2.	"Twelve Noxious Weeds".....	{ PROF. S. A. BEDFORD PROF. C. H. LEE
3.	"Care of Milk and Cream".....	PROF. J. W. MITCHELL
4.	"The Protection of Farm Buildings from Lightning".....	PROF. L. J. SMITH
5.	"The Farm Garden".....	PROF. F. W. BRODRICK
6.	"Farm Poultry in Manitoba".....	M. C. HERNER, B.S.A.
7.	"Hog Raising in Manitoba".....	PROF. W. H. PETERS
8.	"Cow Testing".....	{ PROF. J. W. MITCHELL INSTRUCTOR E. H. FARRELL
9.	"Repairing Farm Equipment and Roads".....	{ ASSISTANT PROF. W. J. GILMORE LECTURER, ROBERT MILNE
10.	"Plans for Farm Buildings".....	{ PROF. L. J. SMITH LECTURER, ROBERT MILNE

*Copies of these bulletins may be had free by addressing the Extension  
Section, Agricultural College, Winnipeg, Canada*

