

REPORT OF THE PROCEEDINGS

OF THE

ELEVENTH ANNUAL MEETING

OF THE

Oddfellows' Relief Association of Canada

HELD IN THE

HALL OF CATARAQUI LODGE No. 10

I. O. O. F.

KINGSTON, ONT.

On Wednesday, January 27th, 1886.



Period.  
I. O. O. F.  
R A

TORONTO :

PRINTED AT THE OFFICE OF THE DOMINION ODDFELLOW.

1886.



❖REPORT ❖ OF ❖ THE ❖ PROCEEDINGS❖

OF THE

*ELEVENTH ANNUAL MEETING*

OF THE

Oddfellows' Relief Association of Canada

HELD IN THE

HALL OF CATARAQUI LODGE No. 10

*I. O. O. F.*

KINGSTON, ONT.

**On Wednesday, January 27th, 1886.**



TORONTO:

PRINTED AT THE OFFICE OF THE DOMINION ODDFELLOW.

1886.

# Oddfellows' Relief Association

OF CANADA.



## Officers.

FIFE FOWLER, M. D. - *President.*  
A. MACALISTER - *Vice-President.*  
W. KING - *Secretary.*  
DANIEL CALLAGHAN - *Treasurer.*

## Directors.

FIFE FOWLER, M.D.,           W. J. LIVINGSTON,  
A. MACALISTER,               R. GAGE,  
SIMON OBERNDORFER,       W. H. HENDERSON, M.D.,  
W. M. DRENNAN,              W. DUNN,  
B. H. CARNOVSKY.

## Non-Resident Directors.

W. ROBSON, - - - Whitby.  
JOHN GIBSON, - - - Stratford.  
L. FERGUSON, - - - St. Thomas.  
L. SILVERMAN, - - - Montreal.  
JOHN RICHARDS, - - - Fredericton, N. B.  
BENJ. BREMNER, - - - Charlottetown, P. E. I.  
J. D. CONKLIN, - - - Winnipeg, Man.

REPORT OF THE PROCEEDINGS  
OF THE  
ELEVENTH ANNUAL MEETING  
OF THE  
**Oddfellows' Relief Association**  
OF CANADA,

*Held in the City of Kingston, Ontario, on Wednesday,  
January 27th, 1886.*

---

The Association assembled in annual meeting on Wednesday, January 27th, 1886, in the Hall of CATARAQUI LODGE, No. 10, I. O. O. F., at 7.30 o'clock p.m.

The President, Dr. Fowler, in the chair.

The attendance was unusually large, showing the interest taken in the association.

In addition to the resident members the following were present from a distance: Col. Cole, J. T. Tenant, Brockville; Jno. Robinson, Prescott; L. Ferguson, St. Thomas; W. Robson, Whitby; and W. Fuge, J. McKellar, Ed. Flunder, Wm. Philips, Jno. Ormiston, A. E. Miggs, Geo. Toner, C. R. Catton, H. Muir, A. Shirby, F. Lloyd, R. Fowler, T. P. Seale, P. Wright W. Livingston, F. W. Petch, J. McLaughlin, A. E. Ormiston, W. L. Kelly, D. Baucher, Z. H. Gardiner, Gananoque.

On motion, the reading of the minutes of the last annual meeting was dispensed with, printed copies being in the hands of the members, and were approved as printed.

The President addressed the meeting, congratulating the association upon the very satisfactory state of its affairs and upon the large attendance of members assembled at this the annual meeting, and called upon the Secretary to read the report of the Directors.

#### DIRECTORS' REPORT.

We have much pleasure in presenting to you the eleventh annual report of this association. We again congratulate the members on the continued prosperity, the large addition to its membership in both classes, the low rate of mortality, and the few assessments made during the year.

We regret to again have to record the death of one of the directors, our esteemed Brother, R. Carnovsky, who, for many years, had been on the board, and had taken a lively interest in all the affairs of the association. The vacancy thus caused has been filled by the appointment of Bro. W. J. Livingston.

The amendments proposed at last meeting will be laid before you for consideration, the membership having been invited to express an opinion upon these proposed amendments previously by printed circular.

The retiring resident directors are Bros. Dunn, W. B. Little and McIlroy; non-resident, Bro. Jno. Gibson, three years' term having expired. Bro. L. Silverman, Montreal, Que.; John Richards, Fredericton, N.B.; and B. Bremner, Charlottetown, P. E. I., elected annually.

The membership on 31st December, 1885, is as follows :

## CLASS A.

|                                         |       |
|-----------------------------------------|-------|
| Number of members per last report ..... | 1,849 |
| Number of applications accepted .....   | 373   |
|                                         | <hr/> |
| Total .....                             | 2,222 |
| Less number died .....                  | 16    |
| " Forfeited and withdrawn.....          | 41    |
|                                         | <hr/> |
|                                         | 57    |
|                                         | <hr/> |
| Present membership.....                 | 2,165 |
| First Class .....                       | 834   |
| Second Class.....                       | 895   |
| Third Class.....                        | 359   |
| Fourth Class .....                      | 77    |
|                                         | <hr/> |
| Total.....                              | 2,165 |

## CLASS B.

|                                 |       |
|---------------------------------|-------|
| Number per last report .....    | 854   |
| Applications accepted .....     | 267   |
|                                 | <hr/> |
| Total .....                     | 1,121 |
| Less number died .....          | 7     |
| " Forfeited and withdrawn ..... | 12    |
|                                 | <hr/> |
|                                 | 19    |
|                                 | <hr/> |
| Total .....                     | 1,102 |

Bro. E. G. Chant has again been employed during the year, principally in Western Ontario.

The benefits paid since the last annual meeting, as will be seen by the financial statement, amount to \$12,000 in Class A, being payments on account of twelve death claims. Of the other four, one draft was issued, but not presented in time to be taken into account for this year. In two other cases, the claims were not complete at the closing of the books for the year, and the other death only occurred on 27th December, four days before the close of the term for which the statement is made—showing us to have sufficient funds to meet every death claim of last year, together with one full assessment now almost due, and balances paid in since closing, which would leave us about \$2,500 to start the present year, in addition to the \$2,000 on special deposit in the Federal Bank.

The number of deaths was sixteen, number of assessments made, six

In Class B \$2,500 has been paid. A draft for one death claim in this class was issued, but was not presented for payment at the time of closing, and one death occurred, as in Class A, upon the 27th December ; and, as we have funds on hand in bank and received since, will leave us with one whole cail to the good, to be issued on the 1st proximo.

The number of deaths was seven, number of assessments made, three.

In closing we must again refer to the assistance rendered by our local agents during the year just past. All of which is respectfully submitted.

FIFE FOWLER,  
*President.*

W. KING,  
*Secretary.*

On motion of Bro. W. Robson, seconded by Bro. W. H. Godwin, the report of the Directors was received and adopted.

The Secretary then read the financial statement as follows :—



# THE ODDFELLOWS' RELIEF ASSOCIATION OF CANADA.

## CLASS A.

RELIEF ASSOCIATION OF CANADA.

Cr.

BALANCE SHEET FOR FINANCIAL YEAR ENDING 31ST DECEMBER, 1885.

|                                                                                                                                                                                                                                                                                                                                                                                                                                                                                                                           |                             |            |              |          |  |            |                  |       |  |            |                                                                                                                                                                                                                                                                                                                                                                                                                                                                                                                             |                                   |            |                      |          |  |            |              |          |  |            |
|---------------------------------------------------------------------------------------------------------------------------------------------------------------------------------------------------------------------------------------------------------------------------------------------------------------------------------------------------------------------------------------------------------------------------------------------------------------------------------------------------------------------------|-----------------------------|------------|--------------|----------|--|------------|------------------|-------|--|------------|-----------------------------------------------------------------------------------------------------------------------------------------------------------------------------------------------------------------------------------------------------------------------------------------------------------------------------------------------------------------------------------------------------------------------------------------------------------------------------------------------------------------------------|-----------------------------------|------------|----------------------|----------|--|------------|--------------|----------|--|------------|
| <p>Dr.</p> <table border="0" style="width: 100%;"> <tr> <td>Frontenac L. and I. Society</td> <td style="text-align: right;">\$4,052 60</td> </tr> <tr> <td>Federal Bank</td> <td style="text-align: right;">2,190 08</td> </tr> <tr> <td></td> <td style="text-align: right; border-top: 1px solid black;">\$6,242 68</td> </tr> <tr> <td>Office Furniture</td> <td style="text-align: right;">69 60</td> </tr> <tr> <td></td> <td style="text-align: right; border-top: 1px solid black;">\$6,312 28</td> </tr> </table> | Frontenac L. and I. Society | \$4,052 60 | Federal Bank | 2,190 08 |  | \$6,242 68 | Office Furniture | 69 60 |  | \$6,312 28 | <table border="0" style="width: 100%;"> <tr> <td>Permanent Fund on 31st Dec., 1884</td> <td style="text-align: right;">\$3,608 48</td> </tr> <tr> <td>Surplus of Year 1885</td> <td style="text-align: right;">1,703 80</td> </tr> <tr> <td></td> <td style="text-align: right; border-top: 1px solid black;">\$5,312 28</td> </tr> <tr> <td>Reserve Fund</td> <td style="text-align: right;">1,000 00</td> </tr> <tr> <td></td> <td style="text-align: right; border-top: 1px solid black;">\$6,312 28</td> </tr> </table> | Permanent Fund on 31st Dec., 1884 | \$3,608 48 | Surplus of Year 1885 | 1,703 80 |  | \$5,312 28 | Reserve Fund | 1,000 00 |  | \$6,312 28 |
| Frontenac L. and I. Society                                                                                                                                                                                                                                                                                                                                                                                                                                                                                               | \$4,052 60                  |            |              |          |  |            |                  |       |  |            |                                                                                                                                                                                                                                                                                                                                                                                                                                                                                                                             |                                   |            |                      |          |  |            |              |          |  |            |
| Federal Bank                                                                                                                                                                                                                                                                                                                                                                                                                                                                                                              | 2,190 08                    |            |              |          |  |            |                  |       |  |            |                                                                                                                                                                                                                                                                                                                                                                                                                                                                                                                             |                                   |            |                      |          |  |            |              |          |  |            |
|                                                                                                                                                                                                                                                                                                                                                                                                                                                                                                                           | \$6,242 68                  |            |              |          |  |            |                  |       |  |            |                                                                                                                                                                                                                                                                                                                                                                                                                                                                                                                             |                                   |            |                      |          |  |            |              |          |  |            |
| Office Furniture                                                                                                                                                                                                                                                                                                                                                                                                                                                                                                          | 69 60                       |            |              |          |  |            |                  |       |  |            |                                                                                                                                                                                                                                                                                                                                                                                                                                                                                                                             |                                   |            |                      |          |  |            |              |          |  |            |
|                                                                                                                                                                                                                                                                                                                                                                                                                                                                                                                           | \$6,312 28                  |            |              |          |  |            |                  |       |  |            |                                                                                                                                                                                                                                                                                                                                                                                                                                                                                                                             |                                   |            |                      |          |  |            |              |          |  |            |
| Permanent Fund on 31st Dec., 1884                                                                                                                                                                                                                                                                                                                                                                                                                                                                                         | \$3,608 48                  |            |              |          |  |            |                  |       |  |            |                                                                                                                                                                                                                                                                                                                                                                                                                                                                                                                             |                                   |            |                      |          |  |            |              |          |  |            |
| Surplus of Year 1885                                                                                                                                                                                                                                                                                                                                                                                                                                                                                                      | 1,703 80                    |            |              |          |  |            |                  |       |  |            |                                                                                                                                                                                                                                                                                                                                                                                                                                                                                                                             |                                   |            |                      |          |  |            |              |          |  |            |
|                                                                                                                                                                                                                                                                                                                                                                                                                                                                                                                           | \$5,312 28                  |            |              |          |  |            |                  |       |  |            |                                                                                                                                                                                                                                                                                                                                                                                                                                                                                                                             |                                   |            |                      |          |  |            |              |          |  |            |
| Reserve Fund                                                                                                                                                                                                                                                                                                                                                                                                                                                                                                              | 1,000 00                    |            |              |          |  |            |                  |       |  |            |                                                                                                                                                                                                                                                                                                                                                                                                                                                                                                                             |                                   |            |                      |          |  |            |              |          |  |            |
|                                                                                                                                                                                                                                                                                                                                                                                                                                                                                                                           | \$6,312 28                  |            |              |          |  |            |                  |       |  |            |                                                                                                                                                                                                                                                                                                                                                                                                                                                                                                                             |                                   |            |                      |          |  |            |              |          |  |            |

Dr. STATEMENT OF REVENUE AND EXPENDITURE FOR YEAR ENDING 31ST DECEMBER, 1885. Cr.

|                                                                                                                                                                                                                                                                                                                                                                                                                                                                                                                                                                                                                                                                                                                                                                                                                                                                                                                                                                   |                    |          |               |       |                 |       |                                  |       |                |       |             |        |                      |       |         |       |                 |       |          |    |  |            |                                                                                                                                                                                                                                                                                                                                                                                                                                                                         |                |            |             |          |             |           |          |        |  |             |
|-------------------------------------------------------------------------------------------------------------------------------------------------------------------------------------------------------------------------------------------------------------------------------------------------------------------------------------------------------------------------------------------------------------------------------------------------------------------------------------------------------------------------------------------------------------------------------------------------------------------------------------------------------------------------------------------------------------------------------------------------------------------------------------------------------------------------------------------------------------------------------------------------------------------------------------------------------------------|--------------------|----------|---------------|-------|-----------------|-------|----------------------------------|-------|----------------|-------|-------------|--------|----------------------|-------|---------|-------|-----------------|-------|----------|----|--|------------|-------------------------------------------------------------------------------------------------------------------------------------------------------------------------------------------------------------------------------------------------------------------------------------------------------------------------------------------------------------------------------------------------------------------------------------------------------------------------|----------------|------------|-------------|----------|-------------|-----------|----------|--------|--|-------------|
| <table border="0" style="width: 100%;"> <tr> <td>Secretary's Salary</td> <td style="text-align: right;">\$625 00</td> </tr> <tr> <td>Treasurer's "</td> <td style="text-align: right;">50 00</td> </tr> <tr> <td>Directors' Fees</td> <td style="text-align: right;">73 00</td> </tr> <tr> <td>Medical Examiner of Applications</td> <td style="text-align: right;">70 00</td> </tr> <tr> <td>Auditors, 1885</td> <td style="text-align: right;">20 00</td> </tr> <tr> <td>Office Rent</td> <td style="text-align: right;">100 00</td> </tr> <tr> <td>Books and Stationery</td> <td style="text-align: right;">45 66</td> </tr> <tr> <td>Postage</td> <td style="text-align: right;">77 17</td> </tr> <tr> <td>Bank Commission</td> <td style="text-align: right;">11 72</td> </tr> <tr> <td>Telegram</td> <td style="text-align: right;">25</td> </tr> <tr> <td></td> <td style="text-align: right; border-top: 1px solid black;">\$1,072 80</td> </tr> </table> | Secretary's Salary | \$625 00 | Treasurer's " | 50 00 | Directors' Fees | 73 00 | Medical Examiner of Applications | 70 00 | Auditors, 1885 | 20 00 | Office Rent | 100 00 | Books and Stationery | 45 66 | Postage | 77 17 | Bank Commission | 11 72 | Telegram | 25 |  | \$1,072 80 | <table border="0" style="width: 100%;"> <tr> <td>Admission Fees</td> <td style="text-align: right;">\$1,923 00</td> </tr> <tr> <td>Annual Call</td> <td style="text-align: right;">1,915 00</td> </tr> <tr> <td>Assessments</td> <td style="text-align: right;">12,785 75</td> </tr> <tr> <td>Interest</td> <td style="text-align: right;">219 19</td> </tr> <tr> <td></td> <td style="text-align: right; border-top: 1px solid black;">\$16,842 94</td> </tr> </table> | Admission Fees | \$1,923 00 | Annual Call | 1,915 00 | Assessments | 12,785 75 | Interest | 219 19 |  | \$16,842 94 |
| Secretary's Salary                                                                                                                                                                                                                                                                                                                                                                                                                                                                                                                                                                                                                                                                                                                                                                                                                                                                                                                                                | \$625 00           |          |               |       |                 |       |                                  |       |                |       |             |        |                      |       |         |       |                 |       |          |    |  |            |                                                                                                                                                                                                                                                                                                                                                                                                                                                                         |                |            |             |          |             |           |          |        |  |             |
| Treasurer's "                                                                                                                                                                                                                                                                                                                                                                                                                                                                                                                                                                                                                                                                                                                                                                                                                                                                                                                                                     | 50 00              |          |               |       |                 |       |                                  |       |                |       |             |        |                      |       |         |       |                 |       |          |    |  |            |                                                                                                                                                                                                                                                                                                                                                                                                                                                                         |                |            |             |          |             |           |          |        |  |             |
| Directors' Fees                                                                                                                                                                                                                                                                                                                                                                                                                                                                                                                                                                                                                                                                                                                                                                                                                                                                                                                                                   | 73 00              |          |               |       |                 |       |                                  |       |                |       |             |        |                      |       |         |       |                 |       |          |    |  |            |                                                                                                                                                                                                                                                                                                                                                                                                                                                                         |                |            |             |          |             |           |          |        |  |             |
| Medical Examiner of Applications                                                                                                                                                                                                                                                                                                                                                                                                                                                                                                                                                                                                                                                                                                                                                                                                                                                                                                                                  | 70 00              |          |               |       |                 |       |                                  |       |                |       |             |        |                      |       |         |       |                 |       |          |    |  |            |                                                                                                                                                                                                                                                                                                                                                                                                                                                                         |                |            |             |          |             |           |          |        |  |             |
| Auditors, 1885                                                                                                                                                                                                                                                                                                                                                                                                                                                                                                                                                                                                                                                                                                                                                                                                                                                                                                                                                    | 20 00              |          |               |       |                 |       |                                  |       |                |       |             |        |                      |       |         |       |                 |       |          |    |  |            |                                                                                                                                                                                                                                                                                                                                                                                                                                                                         |                |            |             |          |             |           |          |        |  |             |
| Office Rent                                                                                                                                                                                                                                                                                                                                                                                                                                                                                                                                                                                                                                                                                                                                                                                                                                                                                                                                                       | 100 00             |          |               |       |                 |       |                                  |       |                |       |             |        |                      |       |         |       |                 |       |          |    |  |            |                                                                                                                                                                                                                                                                                                                                                                                                                                                                         |                |            |             |          |             |           |          |        |  |             |
| Books and Stationery                                                                                                                                                                                                                                                                                                                                                                                                                                                                                                                                                                                                                                                                                                                                                                                                                                                                                                                                              | 45 66              |          |               |       |                 |       |                                  |       |                |       |             |        |                      |       |         |       |                 |       |          |    |  |            |                                                                                                                                                                                                                                                                                                                                                                                                                                                                         |                |            |             |          |             |           |          |        |  |             |
| Postage                                                                                                                                                                                                                                                                                                                                                                                                                                                                                                                                                                                                                                                                                                                                                                                                                                                                                                                                                           | 77 17              |          |               |       |                 |       |                                  |       |                |       |             |        |                      |       |         |       |                 |       |          |    |  |            |                                                                                                                                                                                                                                                                                                                                                                                                                                                                         |                |            |             |          |             |           |          |        |  |             |
| Bank Commission                                                                                                                                                                                                                                                                                                                                                                                                                                                                                                                                                                                                                                                                                                                                                                                                                                                                                                                                                   | 11 72              |          |               |       |                 |       |                                  |       |                |       |             |        |                      |       |         |       |                 |       |          |    |  |            |                                                                                                                                                                                                                                                                                                                                                                                                                                                                         |                |            |             |          |             |           |          |        |  |             |
| Telegram                                                                                                                                                                                                                                                                                                                                                                                                                                                                                                                                                                                                                                                                                                                                                                                                                                                                                                                                                          | 25                 |          |               |       |                 |       |                                  |       |                |       |             |        |                      |       |         |       |                 |       |          |    |  |            |                                                                                                                                                                                                                                                                                                                                                                                                                                                                         |                |            |             |          |             |           |          |        |  |             |
|                                                                                                                                                                                                                                                                                                                                                                                                                                                                                                                                                                                                                                                                                                                                                                                                                                                                                                                                                                   | \$1,072 80         |          |               |       |                 |       |                                  |       |                |       |             |        |                      |       |         |       |                 |       |          |    |  |            |                                                                                                                                                                                                                                                                                                                                                                                                                                                                         |                |            |             |          |             |           |          |        |  |             |
| Admission Fees                                                                                                                                                                                                                                                                                                                                                                                                                                                                                                                                                                                                                                                                                                                                                                                                                                                                                                                                                    | \$1,923 00         |          |               |       |                 |       |                                  |       |                |       |             |        |                      |       |         |       |                 |       |          |    |  |            |                                                                                                                                                                                                                                                                                                                                                                                                                                                                         |                |            |             |          |             |           |          |        |  |             |
| Annual Call                                                                                                                                                                                                                                                                                                                                                                                                                                                                                                                                                                                                                                                                                                                                                                                                                                                                                                                                                       | 1,915 00           |          |               |       |                 |       |                                  |       |                |       |             |        |                      |       |         |       |                 |       |          |    |  |            |                                                                                                                                                                                                                                                                                                                                                                                                                                                                         |                |            |             |          |             |           |          |        |  |             |
| Assessments                                                                                                                                                                                                                                                                                                                                                                                                                                                                                                                                                                                                                                                                                                                                                                                                                                                                                                                                                       | 12,785 75          |          |               |       |                 |       |                                  |       |                |       |             |        |                      |       |         |       |                 |       |          |    |  |            |                                                                                                                                                                                                                                                                                                                                                                                                                                                                         |                |            |             |          |             |           |          |        |  |             |
| Interest                                                                                                                                                                                                                                                                                                                                                                                                                                                                                                                                                                                                                                                                                                                                                                                                                                                                                                                                                          | 219 19             |          |               |       |                 |       |                                  |       |                |       |             |        |                      |       |         |       |                 |       |          |    |  |            |                                                                                                                                                                                                                                                                                                                                                                                                                                                                         |                |            |             |          |             |           |          |        |  |             |
|                                                                                                                                                                                                                                                                                                                                                                                                                                                                                                                                                                                                                                                                                                                                                                                                                                                                                                                                                                   | \$16,842 94        |          |               |       |                 |       |                                  |       |                |       |             |        |                      |       |         |       |                 |       |          |    |  |            |                                                                                                                                                                                                                                                                                                                                                                                                                                                                         |                |            |             |          |             |           |          |        |  |             |

*Carried forward*

*Carried forward*

**CLASS A.—(Continued.)**

**Dr. STATEMENT OF REVENUE AND EXPENDITURE FOR YEAR ENDING 31ST DECEMBER, 1885. Cr.**

|                                       |             |
|---------------------------------------|-------------|
| <i>Brought forward</i> .....          | \$16,842 94 |
| <hr/>                                 |             |
| <i>Brought forward</i> .....          | \$1,072 80  |
| Rent of Room for Annual Meeting ..... | 10 00       |
| Printing and Advertising.....         | 209 20      |
| Commission on Assessments.....        | 542 89      |
| "    Applications.....                | 824 00      |
| General Agents' Expenses .....        | 480 25      |
| Benefits paid .....                   | 12,000 00   |
| Surplus carried to Permanent Fund...  | 1,703 80    |
|                                       | <hr/>       |
|                                       | \$16,842 94 |

Examined and found to be correct.  
**J. B. McIVER,**  
**FLEMING ROWLAND,** } *Auditors.*

**D. CALLAGHAN,**  
*Treasurer.*

# THE ODDFELLOWS' RELIEF ASSOCIATION OF CANADA

## CLASS B.

Cr.

| Dr.                              | BALANCE SHEET FOR FINANCIAL YEAR ENDING 31ST DECEMBER, 1885. |                                        | Cr.        |
|----------------------------------|--------------------------------------------------------------|----------------------------------------|------------|
| Frontenac L. and I. Society..... | \$862 58                                                     | Permanent Fund on 31st Dec., 1884..... | \$688 54   |
| Federal Bank.....                | 547 49                                                       | Surplus of year 1885 .....             | 721 53     |
|                                  | \$1,410 07                                                   |                                        | \$1,410 07 |

### Dr. STATEMENT OF REVENUE AND EXPENDITURE FOR YEAR ENDING 31ST DECEMBER, 1885. Cr.

|                                         |            |                     |            |
|-----------------------------------------|------------|---------------------|------------|
| Secretary's Salary.....                 | \$175 00   | Admission Fees..... | \$549 00   |
| Treasurer's ".....                      | 25 00      | Assessments.....    | 3,290 30   |
| Auditors .....                          | 10 00      | Interest .....      | 36 67      |
| Postage .....                           | 37 92      |                     |            |
| Bank Commission.....                    | 2 05       |                     |            |
| Stationery.....                         | 10 00      |                     |            |
| Printing and Advertising.....           |            |                     |            |
| Commission on Applications.             |            |                     |            |
| Commission on Assessments.              |            |                     |            |
| Benefits paid.....                      | \$259 97   |                     |            |
| Surplus carried to Permanent Fund ..... | 63 00      |                     |            |
|                                         | 228 00     |                     |            |
|                                         | 108 47     |                     |            |
|                                         | 2,500 00   |                     |            |
|                                         | 721 53     |                     |            |
|                                         | \$3,875 97 |                     | \$3,875 97 |

Examined and found to be correct.  
 J. B. McIVER, }  
 F. ROWLAND, } Auditors.

D. CALLAGHAN,  
Treasurer.

Moved by Bro. L. Ferguson, St. Thomas, seconded by Bro. J. Robinson, Prescott, that the financial statement be received and adopted. Carried.

### AUDITORS' REPORT.

KINGSTON, 27th January, 1886.

*To the President, Directors and Members of the Odd fellows' Relief Association of Canada :*

BRETHREN,—Having completed the audit of the books of your Association for the year ending 31st December, 1885, we beg to report that we found them correct and very satisfactory, the receipts and payments being duly vouched, and regularly recorded.

Deposits receipts for the amount on deposit in the Federal Bank were produced and examined by us ; and the amount on deposit in Frontenac Loan and Investment Society's Savings Bank, in Class A and Class B respectively, is correctly stated in the accompanying certificates.

We also certify to the correctness of statements of Classes A and B herewith presented.

Yours Fraternaly,

J. B. McIVER, }  
F. ROWLAND, } *Auditors.*

Moved by Bro. John Ormiston, Gananoque, seconded by Bro. J. T. Tennant, Brockville, that the report of the Auditors be received and adopted. Carried.

The meeting then proceeded to the election of three Directors to fill the vacancies occasioned by the expired terms of Bros. Dunn, Little and McIllroy. The fol-

lowing were elected : Bros. W. Dunn, W. M. Drennan, and B. H. Carnovsky.

Bro. John Gibson, of Stratford, was re-elected a non-resident Director for three years.

Bros. L. Silverman, Montreal, Que., John Richards, Fredericton, N.B., and B. Brenner, Charlottetown, P.E.I., were re-elected non-resident Directors for one year.

Bro. L. Ferguson nominated Bro James D. Conklin a non-resident Director for Manitoba. On ballot being taken, Bro. Conklin was elected for one year

Bro. J T. Tennant, Brockville, nominated Bro. F. Rowland, and Bro. Ferguson nominated Bro. J. B. McIver as Auditors for the ensuing year. Ballots being taken Bros. Rowland and McIver were elected.

Bro. W. Dunn then moved, seconded by Bro. W. H. Godwin, that Article VI. Constitution be amended by striking out the word "Sixty" in Section I. and inserting the word "Fifty," and by striking out "From 51 to 60, \$15," in Section II.

The ballot having been taken was found to be in favour of the amendment, and so declared.

Bro. W. Dunn then moved, seconded by Bro. Tennant, that Article VIII., Constitution, Section 2, be amended by putting in the word "Heirs" after the word "No," and striking out "Widow, Child, Father or Mother," and striking out three lines after the word "Will."

The ballot having been taken was found to be in favour of the amendment, and so declared.

Bro. W. Dunn then moved, seconded by Bro. S. Oberndorffer, that Article IV., By-laws, be amended by striking out Sections 1, 2 and 3 as they stand, and making a new Section to read as follows: "An applicant for membership must be a member of an Oddfellows' lodge but once accepted, his membership depends solely on the payment of all calls made upon him in accordance with the By-laws, of the Association; provided, however, that if he shall be expelled from the Independent Order of Oddfellows his membership immediately ceases in this Association.

This amendment called forth a very animated debate, and was very fully and ably discussed by Bros. John Ormiston, Gananoque; J. Robinson, Prescott; W. H. Cole and J. T. Tennant, Brockville; L. Ferguson, St. Thomas; W. Robson, Whitby; Macalister Adams, McIver, Godwin and Dunn, Kingston.

The ballot being taken was found to be in favour of the amendment, and was so declared.

The amendments proposed by Bros. Midgley, Macalister and Godwin being fully covered by the one just made were withdrawn.

It was then moved by Bro. A. Macalister, seconded by Bro W. H. Godwin, that the sum of (\$120) one hundred and twenty dollars be placed to the credit of the Directors on account of fees for the year 1886. Carried.

Moved by Bro. J. Ormiston, seconded by Bro. J. Robinson, Prescott, that the thanks of this meeting be tendered to Cataraqui Lodge, No. 10, I. O. O. F., for use of lodge room for this meeting. Carried.

Moved by Bro. W. H. Fuge, Gananoque, seconded by Bro. J. McKellar, Gananoque, that 3,500 copies of annual report be printed and distributed to members and others Carried.

Bro. John Ormiston, Gananoque, gave notice that at the next annual meeting he will move to repeal the amendment to Article IV. of By-laws adopted at this meeting, and substitute therefor the original article as it stood previous to such amendment being adopted.

Bro. Edward Flunder, of Gananoque, gave notice that at the next annual meeting of the Oddfellows' Relief Association he will move to amend the By-laws by adding to Section 1, Article IV., the following:— Provided further that any member having attained the age of sixty years, who has been a member of the Association continuously for the period of twenty (20) years or since the first year of its organization in the event of his becoming indigent, shall upon application, such application being endorsed by the lodge of which he may be a member, be relieved from the payment of the assessments or calls made subsequent to such application. Such assessments or calls, however, with interest added thereto, shall form a lien upon and be deducted from the amount of benefit due and payable at the death of such member relieved.

No other business appearing, the annual meeting adjourned.

## BOARD OF DIRECTORS.

The Board of Directors met at the office of the Association after the annual meeting for the election of officers for the ensuing year, and all the officers were re-elected.

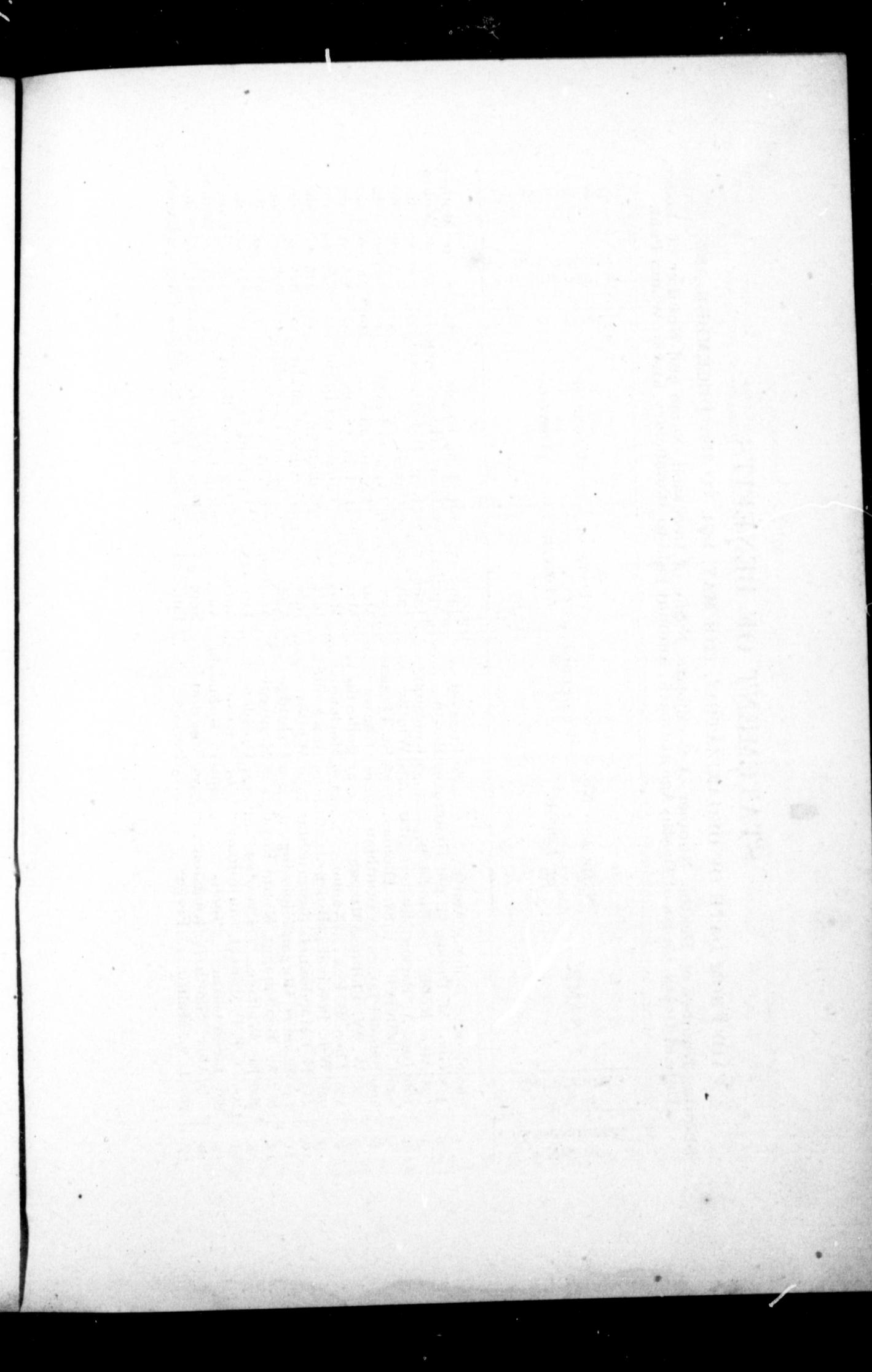
It was also decided that after 31st March, 1886, a charge of fifty cents would be made upon applications for new certificates or duplicate certificates.

Where duplicates are required a statutory declaration of loss of original must accompany the application.

In cases where changes of Beneficiary are required the original to be returned, the applicant to write plainly what changes are required, giving names in full, in every case the above fee to accompany the application.

W. KING,  
*Secretary.*





# STATEMENT OF BENEFITS

PAID FROM DATE OF ORGANIZATION, 12TH MAY, 1874, TO 31ST DECEMBER, 1885,

Showing Number of Deaths, Number of Certificate, Name of Deceased, Name and Number of Lodge, Date of Death, Cause of Death, Age at Death, Amount paid to Beneficiary, and to Whom Paid.

| No. of Assessment. | No. of Certificate. | NAME.             | NAME AND No. OF LODGE. | RESIDENCE.       | DATE OF DEATH. | CAUSE OF DEATH.      | Age at Death. | Amount paid to beneficiary. | To Whom paid. |
|--------------------|---------------------|-------------------|------------------------|------------------|----------------|----------------------|---------------|-----------------------------|---------------|
| 1                  | 267                 | George Tyner...   | Amity.....80           | Prescott .....   | Jan, 25, '76   | Inflam. Lungs.....   | 25            | \$ 650 00                   | Mother.       |
| 2                  | 435                 | Geo. M. Debus.    | Grand Union...97       | Berlin .....     | April 14, '76  | Hemorrhage Lungs     | 45            | 750 00                      | Widow.        |
| 3                  | 21                  | Alex. Robb.       | Kingston.....59        | Kingston.....    | June 2, '76    | Rup Blood-vessel.    | 55            | 760 00                      | do            |
| 4                  | 180                 | Jno. A. Parker.   | Eastern Star...72      | Whitby .....     | July 20, '76   | Cancer .....         | 37            | 775 00                      | do            |
| 5                  | 526                 | C. Mitchell ..... | St. Thomas.....76      | St. Thomas ..    | Oct. 20, '76   | Typhoid Fever.....   | 45            | 800 00                      | do            |
| 6                  | 199                 | Samuel James...   | Corinthian.....61      | Oshawa .....     | Mar. 12, '77   | Pneumonia .....      | 39            | 820 00                      | do            |
| 7                  | 56                  | W. W. Phillips.   | Mizpah .....           | Belleville ..... | May 6, '77     | Inflam. Lungs.....   | 32            | 825 00                      | do            |
| 8                  | 583                 | Thos. B. Fox...   | Naomi .....            | Markham .....    | May 18, '77    | Tumour on Brain.     | 24            | 825 00                      | do            |
| 9                  | 926                 | Wm. Percival...   | Brock .....            | Brockville ..... | July 2, '77    | Gangrene .....       | 41            | 825 00                      | do            |
| 10                 | 215                 | H.J. Macdonnell   | Eastern Star...72      | Whitby .....     | July 9, '77    | Disease of Brain...  | 54            | 825 00                      | do            |
| 11                 | 145                 | Francis Morgan    | Nipissing.....79       | Uxbridge .....   | Aug. 12, '77   | Chronic Laryngitis   | 41            | 825 00                      | do            |
| 12                 | 1052                | A. Beauchamp.     | Mount Royal...1        | Montreal .....   | April 29, '77  | Killed at Fire ..... | 34            | 750 00                      | do            |
| 13                 | 908                 | Jas. Wallace...   | Dresden .....          | Dresden .....    | Jan. 25, '78   | Typhoid Fever.....   | 36            | 825 00                      | do            |
| 14                 | 1205                | O. T. P. Manuel.  | Corinthian.....61      | Oshawa .....     | April 1, '78   | Disease of Brain...  | 37            | 825 00                      | Exec'tr.      |
| 15                 | 887                 | Jacob Garner...   | Scotia .....           | Pt. Robinson...  | Aug. 28, '78   | Sunstroke .....      | 41            | 825 00                      | Widow.        |
| 16                 | 7                   | Alex. Smith, Jr.  | Kingston.....59        | Kingston.....    | Sept. 12, '78  | Heart Disease .....  | 40            | 825 00                      | do            |
| 17                 | 781                 | L. C. Munro.....  | Fergus .....           | Fergus.....      | Jan. 26, '79   | Congestion Lungs.    | 40            | 825 00                      | Exec'tr.      |

|    |                  |               |                 |           |     |                     |    |      |    |         |
|----|------------------|---------------|-----------------|-----------|-----|---------------------|----|------|----|---------|
| 18 | H. McGaffey      | Oriental      | Stanstead, Q.   | Mar. 12,  | '79 | Cancer Stomach      | 58 | 825  | 00 | Widow.  |
| 19 | W. Balfour       | Garnet        | Mt. Forest      | Aug. 9,   | '79 | Heart Disease       | 41 | 825  | 00 | do      |
| 20 | W. Cullen        | Eastern Star  | Whitby          | Aug. 12,  | '79 | Jaundice            | 53 | 825  | 00 | do      |
| 21 | John Till        | Eastern Star  | Whitby          | Oct. 3,   | '79 | Paralysis Brain     | 40 | 825  | 00 | do      |
| 22 | John Black       | Avon          | Stratford       | Dec. 4,   | '79 | Typhoid Fever       | 40 | 825  | 00 | do      |
| 23 | John Henry       | Gananoque     | Rock Is.'d, Q.  | Feb. 13   | '80 | Congestion Lungs.   | 30 | 850  | 00 | do      |
| 24 | Samuel Knight    | Oriental      | Oshawa          | Mar. 31,  | '80 | Vav. dis. of Heart. | 54 | 850  | 00 | do      |
| 25 | James Allen      | Corinthian    | Peterboro'      | Aug. 12,  | '80 | Pleuro-pneumonia    | 28 | 850  | 00 | Mother. |
| 26 | James Martin     | Peterboro'    | Peterboro'      | Sept. 17, | '80 | Consumption         | 27 | 900  | 00 | Widow.  |
| 27 | Wm. Murphy       | Wardsville    | Wardsville      | Sept. 24, | '80 | Congestion Lungs.   | 35 | 900  | 00 | do      |
| 28 | Wm. Perry        | Kingston      | Kingston        | Dec. 21,  | '80 | Acute Rheumatism    | 34 | 900  | 00 | Sister. |
| 29 | Ias. Corrie      | Avon          | St. Thomas      | Feb. 3,   | '81 | Inflam. Bowels      | 42 | 900  | 00 | Widow.  |
| 30 | R. I. Mather     | Brock         | Brockville      | Feb. 4,   | '81 | Congestion Lungs.   | 39 | 900  | 00 | do      |
| 31 | W. B. Lundy      | Sydenham V.   | Wallaceburg     | Mar. 25,  | '81 | Killed by a Fall    | 34 | 900  | 00 | do      |
| 32 | W. L. Crane      | Ark           | Springfield     | Oct. 20,  | '81 | Typhoid Fever       | 39 | 900  | 00 | do      |
| 33 | Wm. Low          | Nipissing     | Unionville      | Nov. 13,  | '81 | Cancer Stomach      | 49 | 900  | 00 | do      |
| 34 | James Curle      | Brock         | Brockville      | Nov. 27,  | '81 | Vav. dis. of Heart. | 50 | 900  | 00 | do      |
| 35 | T. McConnell     | Desoronto     | Desoronto       | Jan. 5,   | '82 | Railroad Accident.  | 32 | 1000 | 00 | do      |
| 36 | Arch. McKay      | Peaceful Dove | Cannington      | Jan. 10,  | '82 | Fell off a Bridge   | 44 | 1000 | 00 | do      |
| 37 | Jas. A. Clarke   | Belleville    | Belleville      | Feb. 4,   | '82 | Typhoid pneum       | 41 | 1000 | 00 | do      |
| 38 | Jos. C. Stacey   | St. Thomas    | St. Thomas      | Feb. 9,   | '82 | Congestion Brain.   | 43 | 1000 | 00 | do      |
| 39 | Wm. Wynne        | International | Inter'l Bridge. | June 4,   | '82 | Killed by a Train   | 34 | 1000 | 00 | do      |
| 40 | David Carlyle    | Peterboro'    | Peterboro'      | June 28,  | '82 | Comp. of Brain      | 33 | 1000 | 00 | do      |
| 41 | A. F. Patton     | Oriental      | Stanstead       | Sept. 7,  | '82 | Malignant Tumour    | 56 | 1000 | 00 | do      |
| 42 | E. J. Hagan      | Oakville      | Oakville        | Oct. 7,   | '82 | Typhoid Fever       | 31 | 1000 | 00 | Mother. |
| 43 | Robt. Salvadge   | Avon          | Stratford       | Oct. 7,   | '82 | Typhoid Fever       | 45 | 1000 | 00 | Widow.  |
| 44 | Albert W. Smith  | Chatham       | Chatham         | Nov. 12,  | '82 | Paralysis Brain     | 45 | 1000 | 00 | Parent  |
| 45 | Rev. R. Pattison | Warriner      | Laskay          | Dec. 4,   | '82 | Purp. Hemorrhagia   | 44 | 1000 | 00 | Widow.  |
| 46 | John J. Odbert   | Avon          | Stratford       | Jan. 24,  | '83 | Phthisis            | 37 | 1000 | 00 | do      |
| 47 | J. A. Phillippo  | Warriner      | Port Perry      | Mar. 12,  | '83 | Congestion Brain.   | 47 | 1000 | 00 | do      |
| 48 | Jno. Wolfenden   | Eastern Star  | Whitby          | Sept. 18, | '84 | Phthisis Pulmon's.  | 44 | 1000 | 00 | Widow   |
| 49 | Wm. Walker       | Grand River   | Brantford       | Sept. 6,  | '83 | Inflam. Bowels      | 44 | 1000 | 00 | & Son.  |
| 50 | Robt. Armstrong  | St. Thomas    | St. Thomas      | Sept. 30, | '83 | Typhoid Fever       | 39 | 1000 | 00 | Widow.  |

NOTE.—Names marked thus \* paid without making an assessment.

STATEMENT OF BENEFITS.—Continued.

| No. of Assessment. | No. of Certificate. | NAME.              | NAME AND No. OF LODGE. | RESIDENCE.       | DATE OF DEATH. | CAUSE OF DEATH.      | Age at Death. | Amount paid to beneficiary. | To Whom paid.   |
|--------------------|---------------------|--------------------|------------------------|------------------|----------------|----------------------|---------------|-----------------------------|-----------------|
| 45                 | 259                 | S. D. Merick ...   | Amity .....80          | Carlton Place.   | Oct. 26, '83   | Typhoid Fever.....   | 30            | 1000 00                     | Widow.          |
| *                  | 439                 | G. W. Andrews      | Kingston .....59       | Kingston.....    | Jan. 31, '84   | Cancer of Face.....  | 54            | 1000 00                     | Admin-istratrix |
| 46                 | 835                 | Sam'l. C. Livott.  | Waterloo .....107      | Galt .....       | Mar. 7, '84    | Hemiplegia .....     | 56            | 1000 00                     | Widow.          |
| 47                 | 1326                | N. R. Tremelling   | St. Thomas .....76     | St. Thomas ...   | May, 26, '84   | Phthisis .....       | 45            | 1000 00                     | Mother.         |
| *                  | 2190                | W. Sheard .....    | Alpha .....115         | Almonte .....    | June 22, '84   | Killed, R. Accident  | 30            | 1000 00                     | do              |
| 48                 | 1229                | J. D. Campbell.    | The Toronto ..71       | Toronto .....    | Aug. 29, '84   | Typhoid Fever.....   | 28            | 1000 00                     | do              |
| 49                 | 754                 | Jas. McCammon      | Cataraqui.....10       | Kingston.....    | Nov. 29, '84   | Disease of Liver ... | 50            | 1000 00                     | do              |
| 50                 | 35                  | Robt Carnovsky     | Kingston .....59       | Kingston.....    | Feb. 2, '85    | Anæmia .....         | 57            | 1000 00                     | Widow.          |
| *                  | 1402                | Thos. G. Carson    | Bay of Quinte 143      | Picton .....     | Feb. 15, '85   | Acute Peritonitis... | 48            | 1000 00                     | do              |
| 51                 | 5726                | John Gibson.....   | St. Mary's ...176      | St. Mary's ..... | Mar. 5, '85    | Urinary Calculi ...  | 61            | 1000 00                     | Exec'tr.        |
| *                  | 1965                | Thos. F. Hayden    | Durham .....78         | Port Hope .....  | Mar. 6, '85    | Phthisis .....       | 27            | 1000 00                     | do              |
| *                  | 1905                | Sam'l Ferguson     | Millbank.....209       | Millbank.....    | Mar. 8, '85    | Typhoid Fever.....   | 32            | 1000 00                     | Heirs.          |
| 52                 | 1742                | Wm. Jefferies ...  | Ark .....181           | Springfield..... | May 4, '85     | Bright's Disease ... | 38            | 1000 00                     | Widow.          |
| *                  | 2305                | S. Merrifield, Sr. | Maitland.....119       | Wingham .....    | May 11, '85    | Uremic Poisoning...  | 44            | 1000 00                     | do              |
| 53                 | 1877                | Jas. E. Durham.    | Friedship .....65      | Petrolea .....   | July 6, '85    | Inflam. Bowels.....  | 37            | 1000 00                     | do              |
| *                  | 1279                | Jas. Moulton ..... | Gananoque ..114        | Gananoque .....  | July 20, '85   | Phthisis (Grinders)  | 41            | 1000 00                     | do              |
| *                  | 453                 | J. T. S. Webb, MD  | Mizpah .....3          | Montreal.....    | Ang. 27, '85   | Disease of Brain ... | 43            | 1000 00                     | do              |
| *                  | 2786                | A. W. Thompson     | Equity .....232        | Hagersville ...  | Sept. 19, '85  | Railway Accident.    | 49            | 1000 00                     | do              |
| 54                 | 2722                | E. H. Dunham...    | Golden Rule ...46      | Carleton, N.B.   | Sept. 22, '85  | Gunshot Accident.    | 34            | 1000 00                     | do              |
| *                  | 1230                | Wm. Wilson .....   | Brock .....9           | Brockville ..... | Oct. 5, '85    | Chronic Gastritis... | 56            | 1000 00                     | Dau'tr's        |

## CLASS B.

| No. | Name             | Residence   | Age | Date          | Cause of Disability | Benefit | Beneficiary |
|-----|------------------|-------------|-----|---------------|---------------------|---------|-------------|
| 1   | Wm. Murphy       | Wardsville  | 60  | Sept. 24, '80 | Congestion Lungs.   | 500 00  | Widow.      |
| 2   | Jos. Corrie      | St. Thomas  | 41  | Feb. 3, '81   | Inflam. Bowels      | 500 00  | Sister.     |
| 3   | W. B. Lundy      | Wallaceburg | 120 | Mar. 25, '81  | Killed by a Fall    | 500 00  | Widow.      |
| 4   | W. L. Crane      | Sydenham    | 181 | Oct. 20, '81  | Typhoid Fever       | 500 00  | do          |
| 5   | Jas. A. Clarke   | Ark         | 81  | Feb. 4, '82   | Typhoid Pneum       | 500 00  | do          |
| 6   | Jos. C. Stacey   | Belleville  | 76  | Feb. 9, '82   | Congestion Brain    | 500 00  | do          |
| 7   | Alb. W. Smith    | St. Thomas  | 29  | Nov. 12, '82  | Paralysis Brain     | 500 00  | Parents     |
| 8   | Rev. R. Pattison | Chatham     | 75  | Dec. 3, '82   | Purpura Hem'gia     | 500 00  | Widow.      |
| 9   | John Allen       | Warriner    | 61  | Sept. 29, '83 | Drowned             | 500 00  | do          |
| 10  | John Rundle      | Corinthian  | 61  | Sept. 10, '83 | Heart Disease       | 500 00  | do          |
| 11  | Robt. Armstrong  | Corinthian  | 76  | Oct. 26, '83  | Inflam. Bowels      | 500 00  | Father.     |
| 12  | G. W. Andrews    | St. Thomas  | 59  | Mar. 7, '84   | Hemiplegia          | 500 00  | Widow.      |
| 13  | N. R. Tremelling | Kingston    | 76  | June 22, '84  | Killed, R. Accident | 500 00  | Mother.     |
| 14  | Robt. Carnovsky  | St. Thomas  | 59  | Feb. 2, '85   | Anaemia             | 500 00  | Widow.      |
| 15  | Thos. F. Hayden  | Kingston    | 78  | Mar. 6, '85   | Phthisis            | 500 00  | Exec'tr.    |
| 16  | Jas. E. Durham   | Durham      | 65  | July 6, '85   | Inflam. Bowels      | 500 00  | Widow.      |
| 17  | A. W. Thompson   | Friendship  | 232 | Sept. 19, '85 | Railway Accident    | 500 00  | do          |
| 18  | E. H. Dunham     | Equity      | 46  | Sept. 22, '85 | Gunshot Accident    | 500 00  | do          |
| 19  | Wm. Wilson       | Golden Rule | 9   | Oct. 5, '85   | Chronic Gastritis   | 500 00  | Dau'tr's    |

## DISABILITY CLAIMS.

| No. | Name        | Date          | Cause of Disability | Benefit | Beneficiary |
|-----|-------------|---------------|---------------------|---------|-------------|
| 1   | W. Sudworth | April 12, '79 | Gunshot             | 400 00  | Self.       |
| 2   | Wm. Bladon  | Mar. 12, '81  | Spinal Injury       | 500 00  | do          |

NOTE.—Names marked thus \* paid without making an assessment.

### TOTAL CLAIMS PAID.

|                               |                    |
|-------------------------------|--------------------|
| Class "A."—Death Claims       | \$64,255 00        |
| "    "    "—Disability Claims | 900 00             |
| Class "B."—Death Claims       | 65,155 00          |
|                               | 9,500 00           |
|                               | <u>\$74,655 00</u> |

# The Dominion Oddfellow

THE OFFICIAL ORGAN  
OF THE

GRAND LODGES OF ONTARIO, QUEBEC, MANITOBA, AND  
THE MARITIME PROVINCES.

A Weekly Journal - Published every Thursday

—DOUBLE ROYAL SIZE, EIGHT PAGES—

DEVOTED TO

THE PROMOTION of ODDFELLOWSHIP

and Principles embodied in its Motto : "Friendship,  
Love, and Truth."

*Editor :*

BRO. C. BLACKETT ROBINSON.

*Special Contributors :*

BRO. CL. T. CAMPBELL, M.D., G.R. ;

BRO. J. B. KING, G.S.

Having a large and rapidly increasing circulation, THE DOMINION ODDFELLOW offers special inducements to Advertisers, circulating as it does among the most intelligent class of the community.

No advertisement inserted offensive to pure taste and good morals.

Subscription price, One Dollar and Fifty Cents per annum, strictly in advance.

Address, Dominion Oddfellow Co.,

TORONTO, CANADA.

## BOOK AND JOB PRINTING.

We are prepared to furnish Estimates for the Printing of CONSTITUTIONS AND BY-LAWS, LETTER AND NOTE HEADINGS, CIRCULARS, CARDS, and other supplies not obtainable at the Grand Secretary's office.

Specimen copies of Constitution and By-laws sent free on application.