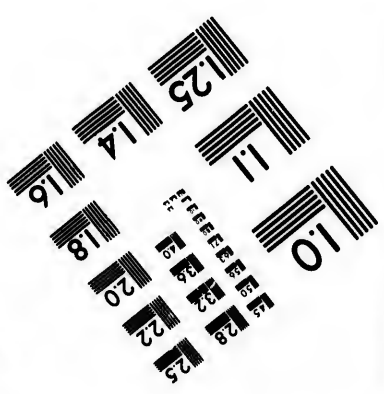
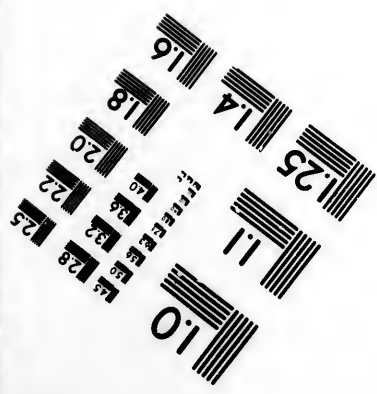
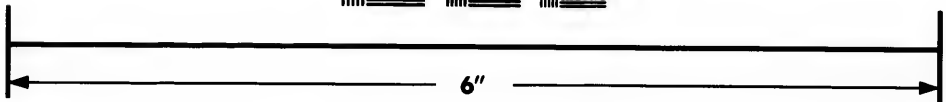
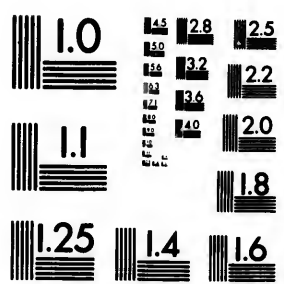
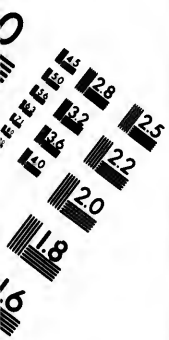


**IMAGE EVALUATION
TEST TARGET (MT-3)**



**Photographic
Sciences
Corporation**

23 WEST MAIN STREET
WEBSTER, N.Y. 14580
(716) 872-4503



**CIHM/ICMH
Microfiche
Series.**

**CIHM/ICMH
Collection de
microfiches.**



Canadian Institute for Historical Microreproductions / Institut canadien de microreproductions historiques



© 1983

Technical and Bibliographic Notes/Notes techniques et bibliographiques

The Institute has attempted to obtain the best original copy available for filming. Features of this copy which may be bibliographically unique, which may alter any of the images in the reproduction, or which may significantly change the usual method of filming, are checked below.

L'Institut a microfilmé le meilleur exemplaire qu'il lui a été possible de se procurer. Les détails de cet exemplaire qui sont peut-être uniques du point de vue bibliographique, qui peuvent modifier une image reproduite, ou qui peuvent exiger une modification dans la méthode normale de filmage sont indiqués ci-dessous.

- | | |
|--|--|
| <input type="checkbox"/> Coloured covers/
Couverture de couleur | <input type="checkbox"/> Coloured pages/
Pages de couleur |
| <input type="checkbox"/> Covers damaged/
Couverture endommagée | <input type="checkbox"/> Pages damaged/
Pages endommagées |
| <input type="checkbox"/> Covers restored and/or laminated/
Couverture restaurée et/ou pelliculée | <input type="checkbox"/> Pages restored and/or laminated/
Pages restaurées et/ou pelliculées |
| <input type="checkbox"/> Cover title missing/
Le titre de couverture manque | <input checked="" type="checkbox"/> Pages discoloured, stained or foxed/
Pages décolorées, tachetées ou piquées |
| <input type="checkbox"/> Coloured maps/
Cartes géographiques en couleur | <input type="checkbox"/> Pages detached/
Pages détachées |
| <input type="checkbox"/> Coloured ink (i.e. other than blue or black)/
Encre de couleur (i.e. autre que bleue ou noire) | <input checked="" type="checkbox"/> Showthrough/
Transparence |
| <input type="checkbox"/> Coloured plates and/or illustrations/
Planches et/ou illustrations en couleur | <input type="checkbox"/> Quality of print varies/
Qualité inégale de l'impression |
| <input type="checkbox"/> Bound with other material/
Relié avec d'autres documents | <input type="checkbox"/> Includes supplementary material/
Comprend du matériel supplémentaire |
| <input type="checkbox"/> Tight binding may cause shadows or distortion
along interior margin/
La reliure serrée peut causer de l'ombre ou de la
distortion le long de la marge intérieure | <input type="checkbox"/> Only edition available/
Seule édition disponible |
| <input type="checkbox"/> Blank leaves added during restoration may
appear within the text. Whenever possible, these
have been omitted from filming/
Il se peut que certaines pages blanches ajoutées
lors d'une restauration apparaissent dans le texte,
mais, lorsque cela était possible, ces pages n'ont
pas été filmées. | <input type="checkbox"/> Pages wholly or partially obscured by errata
slips, tissues, etc., have been refilmed to
ensure the best possible image/
Les pages totalement ou partiellement
obscurcies par un feuillet d'errata, une pelure,
etc., ont été filmées à nouveau de façon à
obtenir la meilleure image possible. |
| <input type="checkbox"/> Additional comments:/
Commentaires supplémentaires: | |

This item is filmed at the reduction ratio checked below/
Ce document est filmé au taux de réduction indiqué ci-dessous.

10X	12X	14X	16X	18X	20X	22X	24X	26X	28X	30X	32X
			✓								

The
to th

The
pos
of th
film

Orig
begi
the
sion
othe
first
sion
or ill

The
shall
TINU
whic

Map
diffe
entir
begi
right
requ
meth

The copy filmed here has been reproduced thanks to the generosity of:

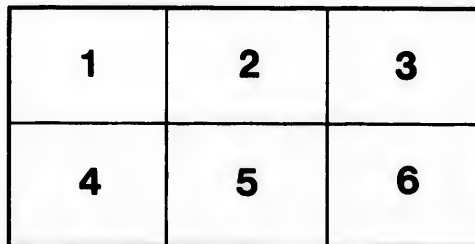
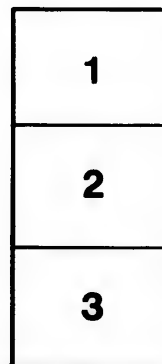
Library of the Public
Archives of Canada

The images appearing here are the best quality possible considering the condition and legibility of the original copy and in keeping with the filming contract specifications.

Original copies in printed paper covers are filmed beginning with the front cover and ending on the last page with a printed or illustrated impression, or the back cover when appropriate. All other original copies are filmed beginning on the first page with a printed or illustrated impression, and ending on the last page with a printed or illustrated impression.

The last recorded frame on each microfiche shall contain the symbol \rightarrow (meaning "CONTINUED"), or the symbol ∇ (meaning "END"), whichever applies.

Maps, plates, charts, etc., may be filmed at different reduction ratios. Those too large to be entirely included in one exposure are filmed beginning in the upper left hand corner, left to right and top to bottom, as many frames as required. The following diagrams illustrate the method:



L'exemplaire filmé fut reproduit grâce à la générosité de:

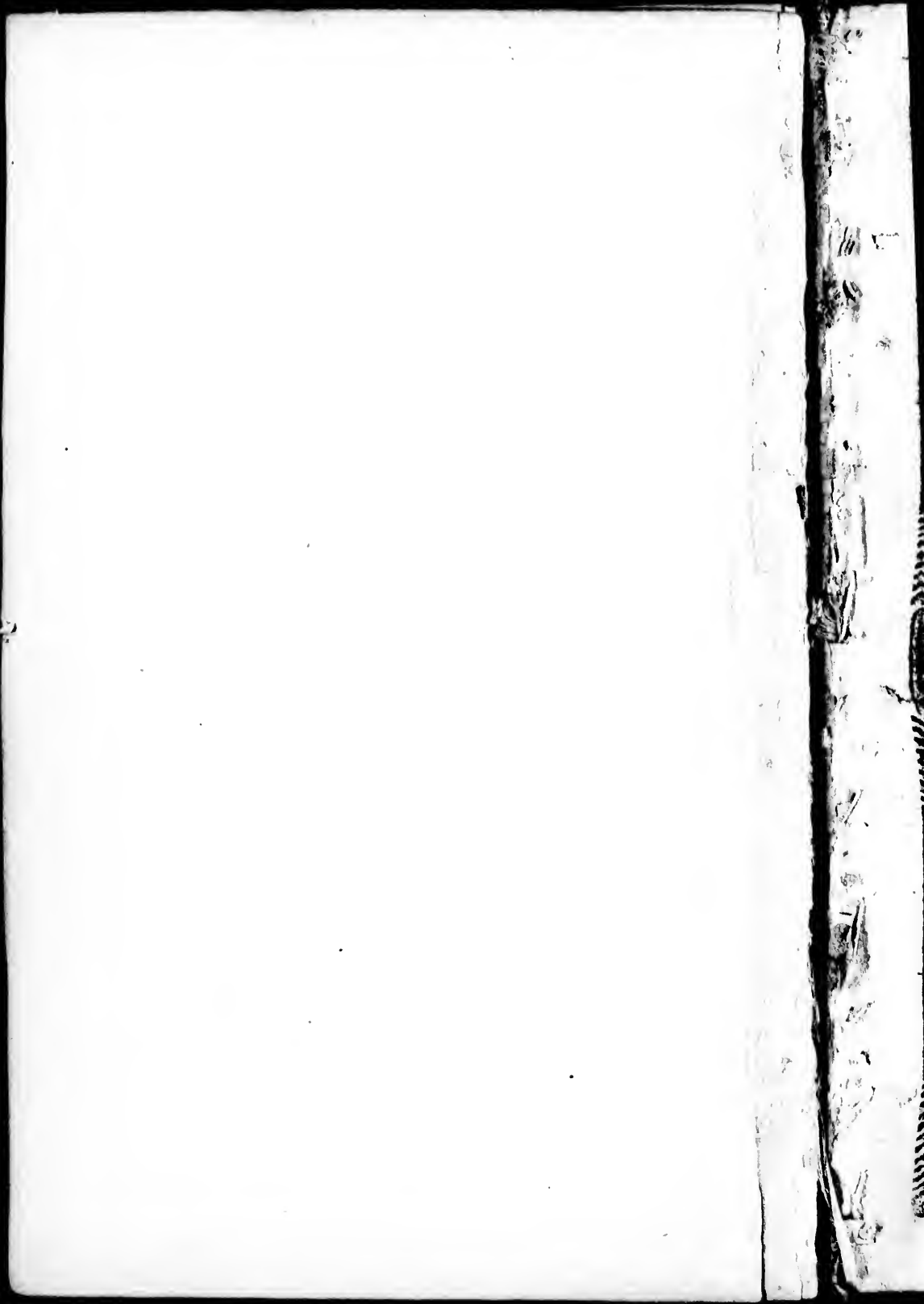
La bibliothèque des Archives
publiques du Canada

Les images suivantes ont été reproduites avec le plus grand soin, compte tenu de la condition et de la netteté de l'exemplaire filmé, et en conformité avec les conditions du contrat de filmage.

Les exemplaires originaux dont la couverture en papier est imprimée sont filmés en commençant par le premier plat et en terminant soit par la dernière page qui comporte une empreinte d'impression ou d'illustration, soit par le second plat, selon le cas. Tous les autres exemplaires originaux sont filmés en commençant par la première page qui comporte une empreinte d'impression ou d'illustration et en terminant par la dernière page qui comporte une telle empreinte.

Un des symboles suivants apparaîtra sur la dernière image de chaque microfiche, selon le cas: le symbole \rightarrow signifie "A SUIVRE", le symbole ∇ signifie "FIN".

Les cartes, planches, tableaux, etc., peuvent être filmés à des taux de réduction différents. Lorsque le document est trop grand pour être reproduit en un seul cliché, il est filmé à partir de l'angle supérieur gauche, de gauche à droite, et de haut en bas, en prenant le nombre d'images nécessaire. Les diagrammes suivants illustrent la méthode.



*South Street,
Admiral's Office
Halifax*

THE
NOVA-SCOTIA CALENDER
OR AN
ALMANACK;

For the Year of the CHRISTIAN ÆRA,
1800.

Being the fourth after Biffextile or Leap Year; from the Creation of the World, according to Chronology, 5749; and in the Fortieth Year of the Reign of His Majesty KING GEORGE the Third, containing 365 Days.

WHEREIN IS CONTAINED,

THE ECLIPSES of the LUMINARIES.
SUN and MOON'S RISING and SETTING.
MOON'S PLACE and AGE.
TIME of HIGH WATER at HALIFAX.

MOON'S APOGEE and PERIGEE.
EQUATION of TIME.
FEASTS and FASTS of the CHURCH.
SITTINGS of the several COURTS, and SESSIONS in this PROVINCE, &c, &c. &c.

Calculated for the Meridian of

HALIFAX IN NOVA-SCOTIA.

Latitude $44^{\circ} 44'$ North, and 4 hours 14 Minutes West-Longitude from London, but will serve without sensible Error for any part of this and the neighbouring Provinces.

BY M E T O N I C U S.

“ Amidst the hurry of tumultuous war,
“ The Stars the Gods, the Heav'ns, were fill his care,
“ Nor did his Skill to fix the rolling Year,
“ Inferior to Eudoxu's art appear.”

“ LUCAN.”

HALIFAX:

Printed and Sold by A. HENRY, at his Printing-Office, in Sackville-Street, corner of Grafton-Street.

DIRECTIONS to FARMERS and GARDENERS.

AS some Springs are much earlier than others; the following Directions ought not to be too literally adhered to in point of Time; but may rather serve to point out the order in which things may succeed each other; but as to the precise time of beginning, the judgment of the Planter must be in some measure regulated by the appearance of the Spring.

The last week in April, sow early pease, cabbage, parsnips, parsley. onions, turnips, radishes, lettuce and mustard.

However, those mentioned for the last week in April, may be put whenever the snow is gone, the frost out of the ground, and the earth so dry as not to be muddy, and the others succeed in their order.

The first week in May, sow oats, wheat and rye; also some early English beans, (and the main crop by the 20th or 21st), spinage and orice; and by the 20th of May a few hills of cucumbers, and a few early bush beans.

The middle of May, sow hemp and flax; and any time between this and the 10th of June will do for potatoes; such as are planted about the first of June, are frequently the largest, but the earliest planted are as commonly the best to eat, being drier, in consequence of their being more thoroughly ripe.

The first week in June, plant all sorts of kidney beans; also cucumbers, squashes and pumpkins.

The 20th of June, sow buck wheat; this is also a good time to sow in herd grass, clover, or any sort of grass seed, which is thought to succeed better if sowed in now with buck wheat, than in the spring with oats. Herd-grass that is sowed the latter part of June or through the whole of July instead of running up, heading out, and ripening as that does which is earlier sown, spends the summer in spreading into a large bunch, and rooting firmly, by which it not only bears the severity of the winter, but sends up from each seed many more stalks the ensuing summer. The farmer should be careful to sow his clover, if possible, before the end of July: for it is very apt to be killed with the winter, if not well rooted, and it often happens that crops which come up well, late in the fall, are wholly killed, so that a single plant cannot be found the next Summer.—The first week in July sow field turnips—the early Dutch may be sown as late as the 25th.—The 20th is a good time to sow winter wheat and rye, as by being sowed early it will be better rooted to stand the severity of the winter, and be more likely to escape a blast by coming in earlier next summer. In the fore part of September, corn salad, which may then be cut any time in the winter or Spring when the snow is off.

VULGAR NOTES, &c. for the Year 1800.

Dominical or Sunday Letter E.	Full Moon, before East.	Apr. 9th
Golden Number - 15	Easter Sunday,	April 13th
Epact - 4	Rogation Sunday,	May 18th
Cycle of the Sun - 17	Ascension Day,	May 22d
Roman Indiction - 3	Whit-Sunday,	June 1st
Sundays after Epiphany 4	Trinity Sunday,	June 8th
Septuagesima Sunday, Feb. 9th	Sunday's after Trinity,	24
Ath Wednesday, Feb. 26th	Advent Sunday,	Nov. 30th

The CHARACTERS of the PLANETS and NODES.

☉ The Sun.	♂ Mars,
☾ The Moon	♃ Jupiter,
☿ Mercury	♄ Saturn,
♀ Venus	♁ Georgian,
♁ The Earth	
♁♁ The Moon's, or any other Planet's Ascending Node.	
♁♁ The Descending Node.	

ASPECTS.

- ♁ Conjunction, or Planet situate in the same Longitude.
- ♁ Opposition, or Planets situate in Longitudes differing six Signs from each other.
- ♁ Quartile, is when they are three Signs, or 90° distant from each other.
- ♁ Trine, is when they are four Signs, or 120° distant from each other.
- * Sextile, is when they are Two Signs, or 60° distant from each other.
- ♁. Semisextile, is when they are 30° distant.
- Vc. Quincunx, is when they are five Signs, or 150° distant.

SIGNS of the ZODIAC.

♈ Aries, the Ram,	♎ Libra, the Balance,
♉ Taurus the Bull	♏ Scorpio, the Scorpion,
♊ Gemini, the Twins	♐ Sagittarius, the Archer,
♋ Cancer, the Crab,	♑ Capricorn, the Goat,
♌ Leo, the Lion,	♒ Aquarius, the Water bearer,
♍ Virgo, the Virgin,	♓ Pisces, the Fishes.

- ♀ Venus, will be Morning Star to 5th August, then Evening Star to the end of the Year.
- ♃ Jupiter, will be Evening Star to 4th July, thence Morning Star to the end of the Year.

SOLAR and LUNAR ECLIPSES in the Year 1800.

THERE will be four Eclipses this Year, Two of the Sun and Two of the Moon, in the following Order, viz.

APRIL 9th. MOON Eclipsed invisible.

	H.	M.	S.	
Beginning at	-	10	52	0 forenoon.
Ecliptic 8	-	0	2	20
Middle at	-	0	9	15
End at	-	1	26	39
Duration	-	2	34	30

} Afternoon.

Digits Eclipsed 6° . 50'. on D's South Limb.

APRIL 23d. SUN Eclipsed, invisible at Halifax,
 ☉ at 8h. 18m. afternoon, in Long. 1° . $30'$. $34''$.
 D's Lat. $33^{\circ}\frac{1}{2}$ N. ☉ will be centrally Eclipsed
 on the Meridian, at 8h. 46m. in Long. 165° .
 East from London, and Lat. $55^{\circ}\frac{1}{2}$ North.

OCTOBER 2. MOON Eclipsed, partly Visible, if the
 Weather be clear.

	H.	M.	S.	
Beginning	-	4	46	45
Ecliptic 8 at	-	5	32	12
Middle at	-	5	42	0
End at	-	6	37	15
Duration	-	1	50	30

} Afternoon.

Digits Eclipsed, 2° . 43' on D's North Limb.

OCTOBER 18. SUN Eclipsed, invisible at Halifax.
 ☉ at 4h. 57'. 48s. in the Morning. in Long.
 66° . 24° . $45'$. D's Lat. 34° . $45''$. South. ☉ will
 be centrally Eclipsed on the Meridian at 5h. 23m.
 in Long. 35° . $45'$. East from London, and Lat.
 50° . South.

The Names and Characters of the Twelve Signus.
ARIES

TAURUS
 CANCER
 VIRGO
 SCORPIO
 CAPRICORN



GEMINI
 LEO
 LIBRA
 SAGGITARIUS
 AQUARIUS

PISCES

Extract from the Proceedings of the BURLINGTON SOCIETY.

AN approv'd Method to preserve the fine flavour of Butter, and to prevent its Growing rancid.

To a Peck of fine Salt take one ounce of crude Sal ammoniac and two ounces of Salt Petre both finely powdered and mix them intimately with the fine Salt: With this Salt work your Butter, until the Butter Milk is entirely extracted then pack it in Wooden Firkins salting it with the same mixed Salt to such a degree as to be palatable when eat with Bread, and no Salter, this mixture is stronger than fine Salt, of consequence something less is required.

By Order of the Society,

Wm. COX, Sec'y.

An admirable Ointment for Burns.

Take of nightshade, houssack, hemlock, and green coleworts, of each two handfuls; of violet-leaves and henbane, of each one handful; bruise all these herbs, and boil them in six pound of fresh butter till they are soft, then press the juice out, and set it over the fire again, and put to it bees-wax 4 ounces; after it is boiled a little, take it off, and put to it salt of lead, half an ounce; stir it well till the salt is dissolved. Cut away the skin, before you lay this to the sore, and it will heal it in twenty-four hours.

For a fresh Strain.

Take of linseed-oil, and rectified spirit of wine, of each two ounces; oil of spike, one ounce; mix, and rub the part very well with it, and lay to it a plaister of paracelsus, with an equal part of bernium.

AN

E P H E M E R I S,

Of the PLANETS Places, for the 1st, 7th, 13th, 19th, and 25th Days of each Month in the Year 1300.

Days	Month.	☉'s Place.							Days.	Month.	☉'s Place.											
		D.	M.	♈	♉	♊	♋	♌			D.	M.	♈	♉	♊	♋	♌					
1	January.	17	14	26	♈	9	24	8	1	Janv.	15	12	♋	23	14	10	23	42				
7		23	21	20	♈	7	13	23			8	27	19	11	24	10	21	10				
13		29	27	♋	14	17	23	7			27	13	1	22	28	0	11	24	25			
19		5	3	♋	19	21	22	12			7	27	8	2	29	29	20	18	12	24	29	
25		11	17	♋	26	♈	9	27			27	1	9	29	23	29	14	12	23	42		
1	February.	18	45	♋	♋	♋	22	6	7	August.	14	49	♋	15	21	14	25	15				
7		24	48	♋	10	13	6	21			5	26	57	13	20	22	15	25	36			
13		0	5	♋	20	20	3	21			5	26	25	19	26	20	6	13	23	15	25	57
19		6	53	♋	27	14	22	4			26	13	25	25	10	7	16	24	16	26	18	
25		12	59	♋	34	17	22	4			26	13	25	25	10	7	16	24	16	26	18	
1	March.	16	5	♋	10	21	22	4	7	September.	14	43	♋	27	21	21	17	18	27	1		
7		22	53	♋	17	6	23	4			25	30	13	20	3	12	22	18	27	24		
13		28	51	♋	24	9	22	3			25	14	19	26	26	12	22	29	19	27	46	
19		4	48	♋	31	14	22	3			24	58	25	2	11	23	15	25	29	20	28	9
25		10	54	♋	38	17	22	4			25	2	1	8	55	16	13	21	17	20	55	
1	April.	17	36	♋	15	17	25	3	7	October.	14	8	♋	15	11	15	12	28	53			
7		23	29	♋	23	18	20	3			24	18	13	20	4	25	8	24	21	29	15	
13		29	27	♋	30	22	27	3			24	6	19	26	2	11	1	23	3	22	29	37
19		5	0	♋	37	27	28	4			25	53	25	20	1	14	23	21	3	22	29	59
25		11	6	♋	44	30	28	4			25	10	1	8	13	23	25	29	20	28	31	
1	May.	16	48	♋	23	22	3	23	7	November.	15	2	♋	9	17	4	23	0	37			
7		22	35	♋	29	10	2	4			23	30	13	21	5	1	17	15	4	23	0	53
13		28	22	♋	36	14	3	5			23	26	19	27	8	18	24	14	4	24	1	9
19		4	11	♋	43	18	4	5			23	21	25	3	1	24	♋	11	4	24	1	25
25		10	17	♋	50	22	4	23			10	1	9	1	12	♋	19	4	2	2	21	
1	June.	16	34	♋	28	7	7	23	7	December.	15	29	♋	23	16	9	4	24	1	49		
7		22	18	♋	35	8	7	23			27	13	21	30	15	24	9	4	24	1	58	
13		28	2	♋	42	6	10	8			23	32	19	27	37	10	10	3	24	2	7	
19		3	14	♋	49	11	9	23			37	25	25	3	4	17	9	10	3	23	2	16
25		9	20	♋	56	16	11	9			23	37	25	3	4	17	9	10	3	23	2	16

1. JANUARY, hath XXXI Days. 1800.

First Quarter, Thursday 2d Day at 6h. 37m. Evening.

Full Moon, Friday 10th Day, at 9h. 56m. night.

Last Quarter, Saturday 18th Day, at 3h. 28m. morn.

New Moon, Friday, 24th Day, at 10h. 54m. night.

☉ enters ♈ Monday 20th Day, at 0h. 44m. morning.

19th, and

☉	☽	☿	♁	♂	♃
D	M	D	M	D	M
12	6	23	42		
14	10	23	56		
15	11	24	10		
16	11	24	25		
18	12	24	29		
19	13	24	54		
21	14	25	15		
22	15	25	26		
23	15	25	57		
24	16	26	18		
26	17	26	33		
27	18	27	1		
28	18	27	24		
29	19	27	46		
29	20	28	9		
20	28	31			
1	21	28	53		
2	21	29	15		
3	22	29	37		
1	3	22	29	59	
4	2	21	21		
7	4	28	0	37	
5	4	28	0	53	
2	4	24	1	9	
1	4	24	1	25	
0	4	24	1	40	
9	4	24	1	49	
9	4	24	1	58	
0	3	24	2	7	
0	3	23	2	16	

M	W	Remarkable Days,	r.	☉	s.	☾	r.	☾	s.	H.	W.
D	F.	Aspects, Weather, &c. &c.	H.	M.	H.	Place.	A.	H.	M.	H.	M.
1	7	Annunciation. 1st of Jan.	7	39	5	27	4	6	10	50	1 3
2	5	Cl. fast 4m. 30f. A snow	7	39	5	9	18	0	44	1 49	
3	6	Storm about these days.	7	38	5	21	1	8	0	44	2 35
4	7	afterwards freezing cold.	7	37	5	3	8	9	1	50	3 21
5	6	2d SUN. af. Christ. (Ap.)	7	37	5	14	55	10	2	50	4 7
6	2	Epiphany. (D. len. 8. 46.	7	36	5	26	43	11	3	46	4 53
7	3	Δ ☽ ☽ (Cl. fast 6m. 13f.	7	35	5	9	38	12	4	41	5 49
8	4	Luci-n. More falling	7	34	5	20	43	13	5	30	6 35
9	5	weather, then very cold.	7	34	5	3	0	14	6	21	7 20
10	6	1. fast 7m. 59f.	7	33	5	15	32	0	15	0	8 0
11	7	High Winds.	7	32	5	28	17	16	6	20	8 40
12	6	1st SUN. af. Epi. D. len.	7	31	5	11	17	17	7	33	9 25
13	2	* ☽ ☽ (8h. 53m.	7	30	5	24	29	18	8	45	10 10
14	3	☽'s to 8h. 6m. a tern.	7	29	5	7	52	19	9	58	10 55
15	4	Cl. fast 9m. 52f.	7	28	5	21	25	20	10	48	11 40
16	5	A pleasant snow storm	7	27	5	6	2	21	11	45	12 25
17	6	about this time.	7	26	5	18	56	22	11	10	1 10
18	7	Q. Chri. l. birth-day kept.	7	25	5	2	55	0	50	2 6	
19	6	2d SUN. af. Epi (peri.)	7	24	5	17	1	24	1	54	3 3
20	2	Cl. f. 11m. 23f. (D l. 9. 12.	7	23	5	1	15	25	2	55	3 59
21	3	10 is XVI f France be-	7	22	5	15	35	26	3	53	4 55
22	4	Vincent. (headed. 1793.	7	21	5	29	57	27	4	50	5 52
23	5	January thaw.	7	20	5	14	47	28	5	40	6 49
24	6	Middling Tides.	7	19	5	28	29	0	10	10	7 46
25	7	Conversion of St. Paul.	7	18	5	12	28	1	5	13	8 45
26	6	3d SUN. af. Epi. D. len.	7	17	5	26	7	2	6	35	9 30
27	2	* ☽ f. 6h. 58m. (oh. 26m.	7	16	5	9	25	3	7	57	10 15
28	3	More snow and aft-r-	7	15	5	22	21	4	9	19	11 0
29	4	wards freezing cold.	7	14	5	4	5	5	10	29	11 45
30	5	K. Char I. Martyr.	7	13	5	17	0	6	11	39	12 30
31	6	Cl. fast 13m 44f.	7	12	5	29	11	7	11	30	1 15

II. FEBRUARY, hath XXVIII Days. 1800.

First Quarter, Saturday 1st Day, 4h. 10m. aftern.
 Full Moon, Sunday 9th Day, oh. 56m. afternoon.
 Last Quarter, Sunday 16th Day, 11h 21m. foren.
 New Moon, Saturday 23d Day, oh. 40m. afternoon.

☉ enters ♀ Tuesday, 18th Day, 3h. 30m. afternoon.

M	W	Remarkable Days,	r.	☉ s.	☾ s	☾ s	☾ s	H. W.
D	D	Aspects, Weather, &c.&c.	H.	M.	H.	Place.	A.	H. M. H. M.
1	7	*s fo. 6h. 35m. aftern.	7	11	5	11 ☽ 2	D	0 48 2 5
2	E	4th SU. af. Epi Purif. of	7	10	5	22 50	9	1 44 2 50
3	2	(B.V. Mary, D.l. 9h. 40m.	7	9	5	4 ♀ 40	10	2 42 3 35
4	3	Cl. fast 14m. 21. (☾ Apo.	7	8	5	16 37	11	3 38 4 10
5	4	Agatha.	7	7	5	28 45	12	4 31 4 56
6	5	<i>(clear and cold.</i>	7	6	5	11 ☽ 10	13	5 10 5 40
7	6	s ♀ ♂. Good sleighing.	7	5	5	23 52	14	5 50 6 24
8	7	♂ D h Cl. fast 14m. 35f.	7	4	5	6 ♀ 53	15	6 30 7 9
9	E	SEPTUAGESIMA SUN.	7	3	5	20 13	☉	rifs. 8 0
10	2	(D.len. 9h. 54m.	7	2	5	3 ♀ 49	17	6 10 8 52
11	3		7	1	5	17 38	18	7 14 9 45
12	4	* D h. Cl. fast 14m. 37f.	6	5	6	1 ♀ 36	19	8 23 10 38
13	5	Vc. ♂ h. More snow and	6	57	6	15 40	20	9 35 11 31
14	6	Va enim. afterwards	6	55	6	29 47	21	10 45 12 24
15	7	Stat. freezing cold.	6	54	6	13 ♀ 54	22	11 55 1 16
16	E	S. XAG. SU. ☾pc. D.le.	6	53	6	28 1	☾	morn. 2 8
17	2	Midling Tides. (10 14	6	51	6	12 ♀ 6	24	0 48 3 0
18	3	High winds and blustering	6	49	6	26 9	25	1 45 3 54
19	4	♂ ♀ weather.	6	48	6	10 ♀ 7	26	2 39 4 46
20	5		6	47	6	24 0	27	3 19 5 38
21	6	*s fo. 5. 14. aft. Very cold.	6	45	6	7 ☽ 43	28	4 1 6 30
22	7	♂ ☾ ♀ Cl. fast 13m 50f.	6	43	6	21 15	29	4 36 7 20
23	E	QUINQ. SU. Pr. Octa. h	6	41	6	4 ♀ 33	☾	fe ts. 8 10
24	2	St. Ma. Pr. (D.l. 10. 38.	6	39	6	17 34	1	7 11 8 56
25	3	Strove Tu. (A.l. Fr. b. 1774	6	37	6	0 ♀ 18	2	8 31 9 42
26	4	Astr Wedn. A change of	6	36	6	12 45	3	9 2 10 28
27	5	Cl. f. 13. 3. weather about	6	34	6	24 57	4	10 27 11 14
28	6	these days.	6	33	6	6 ☽ 57	5	11 33 12 0

1800.

III MARCH, hath XXXI Days, 1800.

First Quarter, Monday 3d Day, 1h. 32m. aftern.
 Full Moon, Tuesday 11th Day, 1h. 35m. morning.
 Last Quarter, Monday 17th Day, 6h 53m. Evening.
 New Moon, Tuesday 25th Day, 4h 1m morning.
 ☉ enters ♍ Thursday 20th Day, 3h. 49m. afternoon.

aftern.
 ernoon.
 foren.
 afternoon.
 ernoon.

☉	☽	H.	W.
M.	H.	M.	M.
48	2	5	
44	2	50	
42	3	35	
38	4	10	
31	4	56	
10	5	40	
50	6	24	
30	7	9	
8	8	0	
10	8	52	
14	9	45	
23	10	38	
35	11	31	
45	12	24	
55	1	16	
1	2	8	
8	3	0	
15	3	54	
9	4	46	
9	5	38	
1	6	30	
6	7	20	
	8	10	
	8	56	
	9	42	
	10	28	
	11	14	
	12	0	

M	w	Remarkable Days.	r.	☉	s.	☾	's	☾	r.	☾	s.	H.	W.
D	D	Aspects, Weather, &c. &c.	H.	M.	H.	Place.	A.	H.	M.	H.	M.	H.	M.
1	7	St. Da. ☾ Ap. High winds	6	32	6	18	♌	48	6	morn.	12	46	
2	E	1st Su. in Lent. D. 1. 10. 58.	6	31	6	0	♐	37	7	0	50	1	32
3	2	and stormy weather about	6	30	6	12	26	♌	1	43	2	18	
4	3	Sup. ☽ ☉ 2h. 31m. af. this	6	29	6	24	23	9	2	24	3	4	
5	4	☾. fast 11m. 48f. time.	6	28	6	6	♌	32	10	3	10	3	50
6	5	Snow or rain, and pretty	6	27	6	18	57	11	3	40	4	36	
7	6	Perpetua. ☽ ☾ cold for	6	26	6	1	♌	43	12	4	13	5	22
8	7	the season.	6	24	6	14	52	13	4	35	6	8	
9	E	2d SUN. in Lent. D 1. 11.	6	22	6	28	23	14	5	6	6	54	
10	2	☾. fast 10. 33. (16m.	6	20	6	12	♌	16	15	5	41	7	40
11	3	*s. 1. 4. 8. af. Rain or Snow	6	18	6	26	27	♌	rises.	8	25		
12	4	Gregory M. and perhaps	6	16	6	10	♌	52	17	7	25	9	17
13	5	☾ ☉ 4h. 16m. mo. hail.	6	15	6	25	23	18	8	36	10	8	
14	6	Pretty good w.ather for	6	13	6	9	♌	56	19	9	45	10	59
15	7	☾ Perigee. the season.	6	11	6	24	25	20	10	46	11	50	
16	E	3d Su. in Lent. D. 1. 11. 40.	6	10	6	8	♌	47	21	11	47	12	41
17	2	St. Patrick.	6	8	6	22	58	♌	morn.	1	31		
18	3	Edw. K. of West Saxons.	6	6	6	6	♌	57	28	0	30	2	21
19	4		6	4	6	20	43	24	1	24	3	12	
20	5	☾. fast 7m. 40f.	6	2	6	4	♌	17	25	2	14	4	3
21	6	Benedict. 7* so. 3. 34. aft	6	0	6	17	37	26	3	5	4	54	
22	7	(11h. 54m.	5	58	7	0	♌	43	27	3	42	5	45
23	E	4th SUN. in Lent. D. 1. n.	5	57	7	13	86	28	4	12	6	36	
24	2	Weather changeable, per-	5	56	7	26	16	29	4	53	7	27	
25	3	Annun. B. V. Ma. y. haps	5	54	7	8	♌	43	♌	fets.	8	18	
26	4	☾. fast 6m. 8f. rain.	5	53	7	20	58	1	6	20	9	6	
27	5		5	51	7	3	♌	8	2	7	17	9	54
28	6		5	49	7	14	58	3	8	14	10	42	
29	7	☾ Apogee.	5	47	7	26	48	4	9	12	11	30	
30	E	5th SUN. in Lent. D. 1. 12.	5	46	7	8	♌	36	5	10	9	12	18
31	2	Gr. Elong. ☽. (25m.	5	44	7	20	16	6	11	5	1	6	

IV. APRIL, hath XXX Days. 1800.

First Quarter, Wednesday 2d Day, at 8h. 29m. morn.
 Full Moon, Wednesday 9th Day, at oh. 2m. aftern.
 Last Quarter, Wednesday 16th Day, at 2h. 55m. morn.
 New Moon, Wednesday 23d Day, at 8h. 18m. even.
 ☉ enters ♄ Sunday 20th Day, at 4h. 27m. morning.

M	w	Remarkable Days,	l.	☉	s.	☾	☾	☾	H.	w.			
D	D	Aspect, Weather &c. &c.	H.	M.	H.	Pl.	ce.	A.	H.	M.			
1	3	All Fools.	5	43	7	2	☾	22	7	morn.	1	54	
2	4	Pleasant showers about	5	41	7	11	30	☾	0	48	2	42	
3	5	these days.	5	39	7	26	53	9	1	20	3	30	
4	6	St. Ambrose Stationary	5	38	7	9	☾	36	10	2	2	4	18
5	7	Cl. f. em. 46f.	5	36	7	26	42	11	2	42	5	6	1
6	E	Palm Su. day. D. 12. 50.	5	35	7	6	☾	14	12	3	18	5	54
7	2	☽ Stat. High winds and	5	33	7	20	12	13	3	44	6	42	
8	3	changeable weath. r,	5	31	7	4	☾	34	14	4	17	7	30
9	4	Decl. pted invis.	5	29	7	19	14	☾	rise.		8	10	
10	5	Cl. fast 1m. 20f.	5	28	7	4	☾	8	16	8	16	9	0
11	6	Good Friday. 7 th s. r. 5. 58.	5	27	7	19	5	17	9	16	9	50	
12	7	☽. Milding full tides	5	25	7	4	☽	0	18	10	17	10	40
13	E	Easter Day. D. 13h. 12m	5	24	7	18	44	19	11	16	11	29	
14	2	Easter-Monday.	5	22	7	3	☾	11	20	morn.	12	18	
15	3	Easter-Tuesday. Sun an	5	20	7	17	19	21	0	12	1	7	
16	4	Clock together.	5	18	7	1	☾	7	0	52	1	56	
17	5		5	17	7	14	33	28	1	27	2	45	
18	6		5	16	7	27	40	24	2	6	3	34	
19	7	Alphege. Cl. flow 57l.	5	14	7	10	☾	20	25	2	35	4	23
20	E	1st Su. af. East. Low Sun	5	12	7	23	4	26	3	5	5	12	
21	2	(day. D. len. 13. 36.	5	11	7	5	☽	25	27	3	36	6	1
22	3	Pleasant showers.	5	10	7	17	36	28	4	4	6	50	
23	4	St. George. ☉ ecl. in v.	5	9	7	29	39	☾	fets.		7	40	
24	5	Moderate Tides	5	7	7	11	☽	34	1	8	2	8	30
25	6	St. Mark. Prs. Mary born	5	6	7	23	25	2	9	2	9	20	
26	7	☽ Apogee. (1776.	5	4	7	5	☽	14	3	9	54	10	10
27	E	2d Su. af. Ea st . Vic. Col.	5	3	7	17	3	4	20	41	11	0	
28	2	(1746. D. 13. 54.	5	1	7	29	14	5	11	21	11	50	
29	3	More rain, and perhaps	5	0	7	10	☾	52	6	11	52	12	40
30	4	Thunder and Lightning.	4	59	8	12	59	7	morn.		1	30	

1800.

9m. morn.

1 aftern.

55m. morn.

8m. even.

. morning.

r. (s)	H. W.
H. M.	H. M.

morn. 1 54

0 48 2 42

1 20 3 30

2 2 4 18

2 42 5 6

3 18 5 54

3 44 6 42

4 17 7 30

rise. 8 10

8 16 9 0

9 16 9 50

10 17 10 40

11 16 11 29

morn. 12 18

0 12 1 7

0 52 1 56

1 27 2 45

2 6 3 34

2 35 4 23

3 5 5 12

3 36 6 1

4 4 6 50

fets. 7 40

8 2 8 30

9 2 9 20

9 54 10 10

10 41 11 0

11 21 11 50

11 52 12 40

morn. 1 30

22nd The day of the week.

V
F
L
N
F
C

M w
D D

1
2
3
4
5
6
7
8
9
10
11
12
13
14
15
16
17
18
19
20
21
22
23
24
25
26
27
28
29
30
31

10th Sailed the little brigant ship in at
9th ...

17th Arrived ...

24th ...

25th Arrived the little Schooner from Canzo with 6 Deserters.

27th Arrived the smaller store ship from England
came passengers Major G. L. ...

28th ...

30th ...

31st ...

V. MAY, hath XXXI Days, 1800.

First Quarter, Thursday 1st Day, 11h. 52m. night.
 Full Moon, Thursday 8th Day, 8h. 35m. night.
 Last Quarter, Thursday 15th Day, oh. 18m. afternoon.
 New Moon, Friday 23d Day, oh. 29m. aftern.
 First Quarter, Saturday 31st Day, 11h. 31m. foren.
 ☉ enters ♀ Wednesday 21st Day, 4h. 55m. morning.

M	w	Remarkable Days,	r.	☉	s.	☾	☾	r.	☾	s.	H. W.
D	D	Aspects, Weather. &c.&c.	H.	M.	H.	Placc.	A.	H.	M.	M.	M.
1	5	St. Philip and St. James.	4	58	8	5	♈ 21	D	0	18	2 20
2	6	♀ Stat. Pleasant weather.	4	57	8	18	0	9	0	50	3 10
3	7	♂ Invention of the Cross.	4	56	8	1	♈ 0 10		1	28	4 0
4	E	3d Su. af. East. D. l. 14. 10.	4	55	8	14	26	11	2	8	4 50
5	2	♂ ♀ ♀ Cl. fl. 3m. 32f.	4	53	8	28	18	12	2	48	5 40
6	3	7*s set 8h. 53m. aftern.	4	52	8	12	♈ 36	13	3	28	6 30
7	4		4	51	8	27	18	14	4	8	7 20
8	5	Showers about this time,	4	49	8	12	♈ 19	0	rises.		8 10
9	6	♂ perig. Pretty full Tides.	4	48	8	27	31	16	8	40	8 58
10	7	Cl. fl. 3. 53. with Thunder.	4	46	8	12	♄ 43	17	9	40	9 46
11	E	4th Su. af. Ea. D. l. 14. 30.	4	45	8	27	46	18	10	37	10 34
12	2	Now pleasant weather.	4	44	8	12	♈ 32	19	10	59	11 22
13	3	and a growing season.	4	42	8	26	55	20	11	19	12 10
14	4	St. Peters & Miquilon taken	+	41	8	10	♈ 51	21	11	41	12 58
15	5	(by Gen. Ogilvie, 1793.	4	40	8	24	20	♄	morn.		1 46
16	6	Qu. Charlotte. bo. 1744.	4	39	8	7	♈ 25	23	0	6	2 34
17	7	Now expect the May storm.	4	38	8	20	7	24	0	36	3 22
18	E	5th SUN. after Easter.	4	37	8	2	♈ 31	25	1	7	4 10
19	2	(Roga. Sun. D. l. 14h.	4	36	8	14	41	26	1	37	4 58
20	3	Cl. flow 4m. (45m.	4	35	8	26	42	27	2	7	5 46
21	4	♂ ♀ 7*s set 7. 57. aft.	4	34	8	8	♈ 35	28	2	37	6 34
22	5	Ascen. Day. Holy Thurf.	4	33	8	20	25	29	3	9	7 22
23	6	♄ Apog. Moderate tides.	4	32	8	2	♈ 13	♄			8 10
24	7	l. fl. 3. 34. Perhaps rain.	4	31	8	14	2	1	8	35	8 58
25	E	SUN. af. Af. Dav. D. 15.	4	30	8	25	54	2	9	15	9 46
26	2	Aug. 1st Abp. Cant.	4	29	8	7	♈ 31	3	9	50	10 34
27	3	7*s set 7h. 38m. aftern.	4	28	8	19	54	4	10	22	11 22
28	4		4	27	8	2	♈ 7	5	10	55	12 10
29	5	K. Cha. II restored.	4	26	8	14	31	6	11	25	12 58
30	6	Cl. flow 2m. 34f.	4	26	8	27	10	7	11	53	1 46
31	7	♀ Stationary.	4	25	8	10	♈ 7	D	m. m.		2 34

Handwritten notes:
 The 5th of May
 England
 1793
 1794
 1795
 1796
 1797
 1798
 1799
 1800

VI. JUNE, hath XXX Days, 1800.

Full Moon, Saturday 7th Day, 3h. 48m. morning.

Last Quarter, Friday 13th Day, 11h 48m night

New Moon, Sunday 22d Day, 3h. 39m morning.

First Quarter, Sunday 29.h Day, 8h. 3m. morning.

☉ enters ♋ Saturday 21st Day, 1h. 33m. afternoon.

M D	w D	Remarkable Days, Aspect, Weather, &c.&c.	r. ☉ s.		☾'s		r. ☽ s.		H. W.			
			H.	M.	H.	M.	H.	M.	H.	M.		
1	E	Whit-Sun. Nicom. D. I.	4	24	8	23	26	9	0	20	3	22
2	2	Whit-Monday. (15h. 12m.	4	24	8	7	8	10	0	50	4	10
3	3	Whit-Tuesday. ♂ ♀ ♀	4	23	8	21	16	11	1	20	4	58
4	4	K. Geo. III horn 1738.	4	23	8	5	M 48	12	1	50	5	46
5	5	Bonif. Pr. Er. Aug. b. 1771.	4	22	8	20	42	13	2	30	6	34
6	6	☾ Per. Pleasant showers	4	21	8	5	↑ 50	14	3	10	7	22
7	7	and growing weather.	4	20	8	21	5	☉	rises.	8	18	
8	E	Trinity SUN. D. I. 15. 20.	4	20	8	6	W 16	16	8	58	9	6
9	2		4	20	8	21	2	17	9	48	9	54
10	3	☾ flow 1m. 4f.	4	20	8	5	W 45	18	10	27	10	43
11	4	St. Barnabas.	4	20	8	19	50	19	11	17	11	32
12	5		4	20	8	3	W 26	20	11	39	12	20
13	6	More rain with thunder & ⚡	4	20	8	16	34	☾	morn.	1	8	
14	7	☾ ☽ 7. 18. af. lightning.	4	19	8	29	16	22	0	35	1	56
15	E	1st SU af. Tri. D I 15. 22.	4	19	8	11	Y 38	23	1	19	2	44
16	2	7's set 6h. 19m. afcarn.	4	19	8	23	44	24	1	45	3	32
17	3	St. A. ban.	4	19	8	5	♂ 40	25	2	29	4	20
18	4		4	19	8	17	29	26	3	17	5	8
19	5	Sup. ♂ ☉ ♀ 5h. 16m. mo.	4	19	8	29	17	27	3	57	5	56
20	6	Tr. of Edw. K. W. Sax.	4	19	8	11	Π 6	28	4	45	6	44
21	7	() Apo. Cl. fast 1m. 1f.	4	18	8	22	53	29	5	31	7	32
22	E	2d SU. af. Tri. D. I. 15. 24.	4	18	8	4	♂ 57	☾	sets.	8	20	
23	2	Change of weather about	4	18	8	17	2	1	8	12	9	12
24	3	Nati. of St. John B. p. this	4	18	8	29	16	2	8	4	10	4
25	4	♂ ♀ ♀. Cl. f. 2. 7. time.	4	18	8	11	Ω 39	3	9	14	10	56
26	5		4	18	8	24	1	4	9	44	11	48
27	6	Very pleasant	4	18	8	6	W 59	5	10	12	12	40
28	7	growing weather.	4	18	8	20	0	6	10	4	1	32
29	E	3d SU. af. 1m. St. Peter	4	18	8	3	♂ 17	☾	11	12	2	24
30	2	Cl. fast 3m. 8f (D. I. 15. 24.)	4	19	8	16	54	8	11	48	3	15

442
 5.
 6.
 7.
 8.
 9.
 10.
 11.
 12.
 1.
 2.
 3.
 4.
 5.
 6.
 7.
 8.
 9.
 10.
 11.
 12.
 1.
 2.
 3.

H.W.
 H.M.

3 22
 4 10
 4 58
 5 46
 6 34
 7 22
 8 18
 9 6
 9 54
 10 43
 11 32
 12 20
 1 8
 1 56
 2 44
 3 32
 4 20
 5 8
 5 56
 6 44
 7 32
 8 20
 9 12
 10 4
 10 56
 11 48
 12 40
 1 32
 2 24
 3 15

[Faint, illegible handwritten text, possibly bleed-through from the reverse side of the page.]

VII.

Full
Last
New
First

© ent

M. w	D	D	A
1	3		
2	4		
3	5		
4	6		
5	7		
6	E	4	
7	2	7	
8	3	S	
9	4		
10	5	C	
11	6	7	
12	7		
13	E	5	
14	2		
15	3	S	
16	4		
17	5		
18	6		
19	7		
20	E	6	
21	2		
22	3	M	
23	4		
24	5		
25	6	S	
26	7	S	
27	E	7	
28	2	u	
29	3		
30	4	C	
31	5		

VII. JULY, hath XXXI Days. 1800.

Full Moon, Sunday 6th Day, 10h. 38m. forenoon.
 Last Quarter, Sunday 13th Day, rh. 53m. afternoon.
 New Moon, Monday 21st Day, 5h. 32m. evening.
 First Quarter, Tuesday 29th Day, 2h. 25m. morning.
 ☉ enters ♋ Wednesday 23d Day, oh. 21m. morning.

M. w	Remarkable Days,	r. ☉ s.	☽'s	r. ☽ s.	H. W.
D D	Aspects, Weather, &c. &c.	P. M. H.	Place.	A. H. M.	H. H.
1	3 ☉ in Aph. 1h. 52m. after.	4 19 8	♊ 51	9	morn. 4 6
2	4 Visi. of B. V. Mary.	4 20 8	15	9 10	0 14 4 57
3	5 Pleasant growing weather.	4 20 8	29 47	11 0 50	5 48
4	6 Tr. of St. Mart. ☽ Peri.	4 21 8	14 ↑ 40	12 1 34	6 39
5	7 ☽ ☉ ♃ 11. 31. for.	4 21 8	29 42	13 2 26	7 30
6	E 4th Su. af. Tri. D. l. 15. 16.	4 22 8	14 ♃ 43	☉	rises. 8 10
7	2 7* s ri. 25. mo. Mid. tides.	4 22 8	29 34	15 8 21	8 58
8	3 St. Killan. Plentiful	4 23 8	14 ♃ 7	16 8 52	9 46
9	4 showers.	4 23 8	28 14	17 9 21	10 34
10	5 ☽ ☽ ♃ ♃ 29 1/2 North.	4 24 8	11 ♃ 53	18 9 52	11 22
11	6 7* s rise 1h. 55m. after.	4 25 8	25 4	19 10 21	12 10
12	7 Very hot.	4 26 8	7 ♃ 49	20 11 20	12 57
13	E 5th Su. af. Tri. D. l. 15. 6.	4 27 8	20 12	☉	morn. 1 44
14	2 ☉ ☽ ♃	4 28 8	2 ☽ 19	20 0 21	2 31
15	3 Swithin. Cl. fast 5m. 28f.	4 29 8	14 14	23 1 5	3 18
16	4 Now expect a spell of	4 30 8	26 4	24 1 51	4 5
17	5 cloudy, foggy, dull	4 31 8	7 ♃ 53	25 2 44	4 52
18	6 ☽ Apogee. weather.	4 32 8	19 44	26 3 5	5 49
19	7	4 33 8	1 ♃ 42	27 3 35	6 35
20	E 6h Su. af. Tri. Margaret.	4 34 8	13 48	28 4 10	7 23
21	2 (Days len. 14h. 52m.	4 35 8	29 5	☉	fers. 8 0
22	3 Magdalen.	4 36 8	8 ♋ 34	1 7 35	8 52
23	4 Make hay while the	4 37 8	21 12	2 8 5	9 44
24	5 sun shines.	4 38 8	4 ♃ 3	3 8 35	10 36
25	6 St. James. Dogdays begin.	4 39 8	17 4	4 9 3	11 28
26	7 St. Anne. Warm showers	4 40 8	0 ♃ 12	5 9 36	12 20
27	E 7th Su. af. Tri. D. l. 14. 40.	4 40 8	13 43	6 10 13	1 12
28	2 with thunder and lightning	4 41 8	27 22	7 10 4	2 4
29	3 and perhaps hail.	4 41 8	11 ♃ 5	8 11 14	2 56
30	4 Clo. fast 6m. 2f.	4 42 8	25 23	9 11 56	3 47
31	5 ☽ Peri. Middling tides.	4 43 8	9 ↑ 4	10	morn. 4 38

VIII. AUGUST, hath XXXI. Days: 1800.

Full Moon, Monday 4th Day, at 6h. 25m. evening.
 Last Quarter, Tuesday 12th Day, at 6h. 29m. morn.
 New Moon, Wednesday, 20th Day, at 6h. 3m. morn.
 First Quarter, Wednesday, 27th Day at 7h. 48m. morn.
 ☉ enters ♍ Saturday 23d Day, at 6h. 45m. morning.

M	w	Remarkable Days,	r.	○	s.	☾	r.	☾	s.	H.	W.		
D	D	Aspects, Weather, &c. &c.	H.	M.	H.	Place.	A.	H.	M.	H.	M.		
1	♁	Lammas-Day.	4	44	8	24	♄	17	11	0	47	5	29
2	♁	Cl. fast 5m. 56f.	4	45	8	8	♁	57	12	1	37	6	20
3	E	8th Su. af. Tr. D.l. 14. 46.	4	46	8	23	♁	36	13	2	49	7	10
4	♁	Showers of rain, with	4	47	8	8	☾	8	☉	rises.	8	0	
5	♁	Su. ☉ ☽ 5h. 16m. thun-	4	48	8	22	♁	26	15	8	15	8	47
6	♁	Transfig. of our Lord. der.	4	49	8	6	♁	23	16	8	46	9	34
7	♁	Name of Jesus.	4	50	8	19	♁	57	17	9	16	10	21
8	♁	Cl. fast 5m. 5f.	4	52	8	3	♁	6	18	9	47	11	8
9	♁		4	53	8	15	♁	51	19	10	32	11	54
10	E	9th Su. af. Tri. St. Law.	4	54	8	27	♁	16	20	11	16	12	40
11	♁	(☽ Sta. D. len. 14h. 12m.	4	55	8	10	♁	24	21	11	45	1	26
12	♁	Pri. of Wales born 1762.	4	56	8	24	♁	21	☾	morn.	2	12	
13	♁		4	57	8	4	♁	11	23	0	34	2	58
14	♁	(Apogee.	4	58	8	16	♁	3	24	1	27	3	44
15	♁	Cl. fast 4m. 10f. (1763.	4	59	8	27	♁	57	25	2	20	4	30
16	♁	Pr. Fred. Duke of York b.	5	0	7	10	♁	0	26	3	2	5	16
17	E	10th Su. af. Tr. D.l. 13. 56.	5	2	7	22	♁	13	27	3	49	6	2
18	♁	August storm may be ex-	5	4	7	4	♁	41	28	4	53	6	48
19	♁	pected about this time.	5	5	7	17	♁	23	29	5	57	7	34
20	♁	Cl. fast 3m. 7f.	5	7	7	0	♁	20	☉	sets.	8	20	
21	♁	Pr. Wm. Henry Duke of	5	8	7	13	♁	31	1	7	40	9	12
22	♁	(Clarence b. 1765.	5	10	7	26	♁	54	2	8	18	10	4
23	♁	Very hot weather.	5	12	7	10	♁	29	3	8	47	10	56
24	E	11th Su. af. Tr. Bartholo.	5	14	7	24	♁	13	4	9	15	11	48
25	♁	Cl. f. 1m. 52f. (D.l. 13. 32.	5	16	7	8	♁	6	5	9	49	12	40
26	♁	7 th 's rif. 8h. 50m. aftern.	5	18	7	22	♁	6	6	10	26	1	32
27	♁	More rain about this time,	5	19	7	6	♁	12	☾	10	58	2	24
28	♁	St. Aug. ☾ peri. then clears	5	21	7	20	♁	25	8	11	50	3	16
29	♁	St. John Bap. behea. off.	5	22	7	4	♁	40	9	morn.	4	6	
30	♁	Cl. fast 26f. pleasant.	5	23	7	18	♁	56	10	1	15	4	57
31	E	12th Su. af. Tr. D.l. 13. 10.	5	25	7	3	♁	9	11	2	20	5	46

800.

ng.
orn.
orn.
ning.

H. W.
H. M:

- 5 29
- 6 20
- 7 10
- 8 0
- 8 47
- 9 34
- 10 21
- 11 8
- 11 54
- 12 40
- 1 26
- 2 12
- 2 58
- 3 44
- 4 30
- 5 16
- 6 2
- 6 48
- 7 34
- 8 20
- 9 12
- 0 4
- 0 56
- 1 48
- 1 40
- 2 32
- 2 24
- 3 16
- 3 6
- 57
- 46

[Faint, mostly illegible handwritten text, possibly bleed-through from the reverse side of the page. Some words like "the same" and "fair" are partially visible.]

Full
Last
New
First

⊙ en

13th
... ..
... ..

The Mary Ann

15th

M	w	D	D	A
1	2	G		
2	3	L		
3	4	8		
4	5	D		
5	6	C		
6	7			
7	E	13		
8	2	N		
9	3			
10	4	G		
11	5			
12	6			
13	7			
14	E	1		
15	2	C		
16	3	7		
17	4	L		
18	5			
19	6	C		
20	7	C		
21	E	1		
22	2	K		
23	3			
24	4			
25	5	C		
26	6	S		
27	7			
28	E	1		
29	2	S		
30	3			

IX. SEPTEMBER, hath XXX Days. 1800.

Full Moon, Wednesday 3d Day, at 4h. 26m. morn.
 Last Quarter, Thursday 11th Day, at oh. 53m. morn.
 New Moon, Thursday 18th Day, at 5h. 49m. aftern.
 First Quarter, Thursday 25th Day, at 1h. 24m. aftern.
 ☉ enters ♌ Tuesday 23d Day, at 3h. 17m. morn.

M. w	Remarkable Days,	r. ☉ s.	☾'s	☾ r. ☾ s	H. w.
D D	Aspects, Weather, &c. &c.	H. M. H.	Place.	A. H. M.	H. M.
1 2	Giles. 7*s r. 8.37. aftern.	5 27 7	17 [☾] 14	12 3 30	6 33
2 3	London burnt 1666, O.S.	5 29 7	1 [☾] 7	13 4 54	7 27
3 4	♁ Sta. A change of weather	5 31 7	14 44	☾ rises.	8 20
4 5	Dog Days end. Mid. tides.	5 32 7	28 3	15 6 38	9 7
5 6	Cl. fl. 1.28. ☽ high winds.	5 34 7	11 [☾] 2	16 7 33	9 54
6 7	Pleasant weather.	5 36 7	23 42	17 8 13	10 41
7 E	13th Su. af. Tr. D.l. 12.46.	5 37 7	6 [☾] 4	18 8 55	11 28
8 2	Nativity of B. V. Mary.	5 39 7	18 12	19 9 40	12 15
9 3		5 40 7	0 [☾] 10	20 10 20	1 2
10 4	Gr. Elong. ♁ Rain about	5 42 7	12 2	21 11 10	1 49
11 5	♁ Ap. 7*s ri. 8h. 5m aft.	5 44 7	23 54	☾ morn.	2 36
12 6	this time, and	5 45 7	5 [☾] 49	23 0 48	3 23
13 7	high winds.	5 46 7	17 53	24 1 52	4 10
14 E	14th Su. af. Tr. Holy cross.	5 48 7	0 [☾] 10	25 2 56	4 57
15 2	Cl. fl. 4m. 53f. (D.l. 12.24.	5 49 7	12 44	26 3 20	5 44
16 3	7*s ri. 7h. 46m. aftern.	5 51 7	25 36	27 4 24	6 31
17 4	Lambert.	5 53 7	8 [☾] 47	28 5 56	7 18
18 5	Mid. tid. Very pleasant	5 54 7	22 17	☾ sets.	8 5
19 6	♁ D. ♁ 4.49. af. weather.	5 56 7	6 [☾] 3	1 6 18	8 56
20 7	Cl. slow 6m. 38f.	5 57 7	20 4	2 6 58	9 47
21 E	15th Su. af. Tr. St. Mat. D.l.	5 58 7	4 [☾] 15	3 7 38	10 38
22 2	K. Geo. II cro. 1761. (12.4	5 59 7	18 32	4 8 18	11 29
23 3	Some pleasant weather.	6 0 6	2 [☾] 50	5 9 6	12 20
24 4	♁ Peri. Pretty full Tides.	6 1 6	17 8	6 10 16	1 10
25 5	Cl. slow 8m. 21f.	6 2 6	1 [☾] 22	☾ 11 28	2 0
26 6	St. Cyprian. Cool mornings	6 3 6	15 30	8 morn.	2 50
27 7	and evenings.	6 5 6	29 29	9 0 47	3 40
28 E	16th Su. af. Tri. D.l. 11.46.	6 7 6	13 [☾] 19	10 2 6	4 30
29 2	St. Mich. Prs. Royal born	6 9 6	26 57	11 3 15	5 20
30 3	St. Jerome. (1766.	6 11 6	10 [☾] 23	12 4 24	6 10

X. OCTOBER, hath XXXI Days, 1800.

Full Moon, Thursday 2d Day, 5h. 32m. evening.
 Last Quarter, Friday 10th Day, 7h. 57m. evening.
 New Moon, Saturday 18th Day, 4h. 58m. morning.
 First Quarter, Friday 24th Day, 8h. 35m. foren.

☉ enters ♍ Thursday 23d Day, 11h. 20m. forenoon.

M	w	Remarkable Days,	r.	☉	s.	☾'s	☾	r.	☾	s.	H.	W.
D	D	Aspects, Weather. &c.&c.	1.	M.	H.	Place.	A.	H.	M.	H.	M.	M.
1	4	Remigius.	6	13	6	23	♋	35	13	5	33	7 5
2	5	☾ eclipsed, partly visible.	6	15	6	6	♌	33	☉	rises.	8	0
3	6	♂ Sta. Change of weather.	6	17	6	19	16	15	6	56	8	46
4	7	☾ flow 11m. 15f.	6	19	6	1	♍	44	16	7	31	9 32
5	E	17th Su. af. Tr. D.l. 11.	6	20	6	14	0	17	8	11	10	18
6	2	7*s rise 6h. 30m. aft. (20.	6	22	6	26	5	18	8	53	11	4
7	3		6	23	6	8	♎	2:19	9	38	11	50
8	4	☾ Apog.	6	25	6	19	54	20	10	18	12	36
9	5	St. Denys.	6	26	6	1	♏	45	21	11	8	1 22
10	6	☾ flow 12. 57.	6	27	6	13	39	♌	11	42	2	8
11	7	7*s rise 6h. 14m. aftern.	6	29	6	25	42	23	morn.	2	54	
12	E	18th Su. af. Tr. D.l. 10. 53.	6	31	6	7	♍	58	24	0	22	3 40
13	2	Trans. of K. Edw. Conf.	6	32	6	20	30	25	1	24	4	25
14	3	Cold mornings and Even-	6	34	6	3	♎	28	26	2	24	5 10
15	4	☾ flow 14m. 8f. ings.	6	36	6	16	39	27	3	24	5	56
16	5	Maria Anto. Q. of France	6	37	6	0	♏	20	28	4	25	6 40
17	6	Etheldred. (behea. 1793.	6	39	6	14	23	29	5	26	7	25
18	7	St. Luke. ☾ ecli. invitable.	6	40	6	28	46	☾	sets.	8	10	
19	E	19th Su. af. Tr. D. 1. 10th.	6	41	6	13	♎	24	1	5	43	9 2
20	2	☾ flow 15m. 45f. (38m.	6	43	6	28	9	2	6	25	9	54
21	3	7*s rise 5h. 35m. aft.	6	44	6	12	♌	52	3	7	8	10 46
22	4	☾ perigee.	6	46	6	27	34	4	7	54	11	38
23	5	A storm about this time,	6	47	6	12	♍	2	5	9	4	12 30
24	6	with high winds.	6	49	6	26	14	♎	10	15	1	22
25	7	K. Geo. III Acces. Crisp.	6	50	6	10	♏	9	7	11	25	2 13
26	E	20th Su. af. Tr. K. Geo. III	6	52	6	23	46	8	morn	3	4	
27	2	Procl. 1760. D.l. 10 16.	6	53	6	7	♋	6	9	0	35	3 55
28	3	St. Simon and St. Jude.	6	55	6	20	9	10	1	50	4	46
29	4	Clear and pleasant for the	6	56	6	2	♌	58	11	3	5	5 37
30	5	☾ flow 16m. 10f. season to	6	57	6	15	35	12	4	20	6	28
31	6	the end of the month.	6	59	6	28	0	13	5	25	7	19

1880.

ng.
ng.
ning.

noon.

	s.	H.	W.
	M.	H.	M.
33	7	5	
es.	8	0	
56	8	46	
31	9	32	
11	10	18	
53	11	4	
8	11	50	
8	12	36	
8	1	22	
12	2	8	
1.	2	54	
2	3	40	
4	4	25	
4	5	10	
4	5	56	
5	6	40	
6	7	25	
	8	10	
3	9	2	
5	9	54	
8	10	46	
4	11	38	
4	12	30	
5	1	22	
5	2	13	
	3	4	
5	3	55	
5	4	46	
5	5	37	
5	6	28	
5	7	19	

[Faint handwritten notes, possibly bleed-through from the reverse side of the page. Some legible words include "3rd", "11th", "12th", "2nd", "3rd", "4th", "5th", "6th", "7th", "8th", "9th", "10th", "11th", "12th".]

4th Arrived the A. Brig E of Moira

5th Sailed H.M.S. The America for
New Brunswick, with 18 Prisoners.

3rd Sailed the A. Brig E of Moira
for New Brunswick.

10th at 10 o'clock with the

Messy Bay, America, & King
of the North Shit's, with
some other vessels

for England, under

of the A. Brig E of Moira

at 10 o'clock, under

of the A. Brig E of Moira

at 10 o'clock, under

of the A. Brig E of Moira

at 10 o'clock, under

of the A. Brig E of Moira

at 10 o'clock, under

14th Sailed the A. Brig E of Moira

for New Brunswick.

27th Arrived the A. Brig E of Moira

from Boston, in 48 Hours.

29th Sailed for Boston for St Johns

New Brunswick.

XI.

Fal IN
Latt Q
New
First C
© ent

M	D	W	D	Aff
	1	7		All
	2	E	21	0
	3	2		Prs.
	4	3		(A
	5	4		Pov
	6	5		S
	7	6		
	8	7		Prs.
	9	E	22	d
	10	2		Cl.
	11	3		St. N
	12	4		6 &
	13	5		Brit
	14	6		A l
	15	7		Mac
	16	E	23	d
	17	2		Hup
	18	3) p
	19	4		
	20	5		Edn
	21	6		U S
	22	7		Ccc
	23	E	24	t
	24			2
	25	3		Dal
	26	4		7*s
	27	5		
	28	6		
	29	7		
	30	E		Ad

XI. NOVEMBER, hath XXX Days, 1800.

Ful Moon, Saturday 1st Day, 9h. 45m. forenoon.
 Last Quarter, Sunday 9th Day, 2h. 24m. afternoon.
 New Moon, Sunday 16th Day, 3h. 36m. afternoon.
 First Quarter, Sunday 23d Day, 6h. 31m. morning.
 ☉ enters ♄ Saturday 22d Day, 7h. 37m. morning.

M	W	Remarkable Days,	r. ☉ s.	☽'s	r. ☽ s.	H. W.
D	D	Aspects, Weather, &c.&c.	H. M. H.	Place:	A. H. M.	H. M.
1	7	All Saints. (D. l. 9h. 56m.	7 0 5	10 ☽ 15	☉ rises.	8 10
2	E	21st Su. af. Tri. Pr. Edw. b.	7 2 5	22 22	15 5 42	8 58
3	2	Prs. Sophia b. 1777. (1767.	7 3 5	4 ☽ 21	16 6 28	9 46
4	3	(Apo. Clo. fl. 16m. 15f.	7 5 5	16 16	17 7 18	10 34
5	4	Powder Plot. 1605.	7 6 5	28 7	18 8 12	11 22
6	5	<i>Snow may be expected</i>	7 7 5	9 ☽ 58	19 9 8	12 10
7	6	<i>about this time.</i>	7 9 5	21 52	20 10 12	12 58
8	7	Prs. Aug. Sophia born.	7 10 5	3 ☽ 52	21 11 17	1 46
9	E	22d Su. af. Tri. D. l. 9. 38.	7 11 5	16 4	☽ inorn.	2 34
10	2	Cl. flow 15m. 53f.	7 12 5	28 32	23 0 5	3 22
11	3	St. Martin.	7 13 5	11 ☽ 19	24 1 4	4 10
12	4	♂ ♀ 11h. 13m. aft.	7 14 5	24 30	25 2 4	4 57
13	5	Britius B. (7* s set o. 31. af.	7 15 5	8 ☽ 9	26 3 4	5 44
14	6	<i>A little more snow or rain.</i>	7 16 5	22 15	27 4 5	6 31
15	7	Machutus. Cl. fl. 15m. 10f.	7 17 5	6 ☽ 47	28 6 5	7 18
16	E	23d Su. af. Tri. D. l. 9. 22.	7 19 5	21 41	☽ sets.	8 5
17	2	Hugh Bp. of Lincoln.	7 20 5	6 ♄ 48	1 5 10	8 53
18	3	☽ per. (Pretty full tides.	7 21 5	21 59	2 6 29	9 41
19	4	<i>Clear and pleasant.</i>	7 22 5	7 ☽ 3	3 7 49	10 29
20	5	Edm. K. and Martyr.	7 23 5	21 52	4 9 9	11 17
21	6	♃ Stat. gr. Flong. ♀	7 24 5	6 ☽ 20	5 10 27	12 5
22	7	Cecilia. <i>Perhaps rain.</i>	7 25 5	20 22	6 11 45	12 53
23	E	24th Su. af. Tri. St. Cle-	7 26 5	3 ☽ 19	☽ inorn.	1 41
24	2	(ment. D. l. 9h. 8m.	7 27 5	17 12	8 1 5	2 29
25	3	Duke of Glo. b. 1743.	7 28 5	0 ☽ 9	2 15 3	3 17
26	4	7* s f. 11h. (Cl. fl. 12. 43.	7 29 5	12 38	10 3 25	4 5
27	5	(21m. aftern.	7 30 5	24 59	11 4 35	4 53
28	6		7 31 5	7 ☽ 9	12 5 45	5 41
29	7	(D. l. 8h. 54m.	7 32 5	19 12	13 6 55	6 29
30	E	Adv. SUN. St. Andrew.	7 33 5	1 ☽ 10	14 7 56	7 17

XII. DECEMBER, hath XXXI Days, 1800.

Full Moon, Monday 1st Day, 4h. 10m. morning.
 Last Quarter, Tuesday 9th Day, 7h. 0m. morning.
 New Moon, Tuesday 16th Day, 1h. 51m. morning.
 First Quarter, Monday 22d Day, 8h. 3m. foren.
 Full Moon, Tuesday 30th Day, 11h. 23m. foren.
 ☉ enters ♍ Sunday 21st Day, 8h. 1m. afternoon.

M	W	Remarkable Days,	r. ☉ s.	☾'s	☾ r. ☾ s.	H. W.
D	D	Aspects, Weather, &c.&c.	H.M.H.	Place.	A. H. N.	H. M.
1	2	<i>We may now expect a spell</i>	7 34 5	13 II 5	☉ rises.	8 5
2	3	☾ Apo. Mod. Tid. of cold	7 35 5	24 57	16 5 35	8 55
3	4	<i>weather.</i>	7 36 5	6 49	17 6 31	9 45
4	5	♃ Stat. <i>A fall of snow.</i>	7 37 5	18 42	17 7 39	10 35
5	6	Clo. flow 9m. 4f.	7 37 5	0 Ω 39	19 8 37	11 25
6	7	Nich. 7*s f. 10h. 40.af.	7 38 5	12 42	20 9 46	12 15
7	E	2d. Su. in Ad. D.l. 8. 42.	7 39 5	24 52	21 10 47	1 4
8	2	Concept. of V. Mary.	7 39 5	7 ♀ 16	22 11 47	1 53
9	3		7 40 5	19 57	☾ morn.	2 42
10	4	Inf. ♂ ☉ ♀ 3h. 16m. aft.	7 40 5	3 = 0	24 0 47	3 31
11	5	♃ Stat. (Clo. flow 6m. 52f.	7 41 5	16 28	25 1 47	4 29
12	6	7* ri. 6h. 30m. aft.	7 41 5	0 ♀ 25	26 2 47	5 9
13	7	Lucy. <i>More snow.</i>	7 42 5	14 50	27 3 47	5 58
14	E	3d Su. in Adv. D.l. 8. 36.	7 42 5	29 42	28 4 47	6 47
15	2	Cl. flow 4m. 30f.	7 42 5	14 † 53	29 5 47	7 36
16	3	♃ Perig. The Farmer now	7 42 5	0 ♀ 14	☾ sets.	8 25
17	4	enjoys the fruits of his	7 42 5	15 34	1 5 10	9 17
18	5	Summer's labour, by a	7 42 5	0 = 40	2 6 29	10 9
19	6	warm fire side.	7 42 5	15 24	3 7 39	11 1
20	7	♃ Stat. Cl. flow 2m. 1f.	7 42 5	29 40	4 8 49	11 53
21	E	4th Su. in Ad. St. Thomas.	7 42 5	13 ✕ 26	5 9 59	12 45
22	2	(D.l. 8. 36. <i>Very cold, with</i>	7 42 5	26 43	☾ 11 9	1 37
23	3	☾ ☉ 11. 16. n. snow &	7 42 5	9 ♀ 34	7 morn.	2 28
24	4	Sun & ☉. tog. high winds.	7 42 5	22 5	8 1 5	3 19
25	5	Christmas-Day. <i>Cold con-</i>	7 42 5	4 ☉ 19	9 2 15	4 10
26	6	St. Stephen. <i>tinues.</i>	7 42 5	16 22	10 3 25	5 1
27	7	St. John. (D.l. 8. 38.	7 41 5	28 18	11 4 35	5 52
28	E	1st Su. af. Christ. Innoc.	7 41 5	10 II 10	12 5 45	6 43
29	2	Cl. f. 2. 28. <i>A little more</i>	7 41 5	22 1	13 6 55	7 34
30	3	Gr. El. ♀ ☾ Pe. moderate.	7 40 5	3 53	☉ rises.	8 25
31	4	Silv. ☉ in perch. 5. 7. m.	7 40 5	15 48	15 5 20	9 15

18

26

30

1800.

orning.
ing.
orning.
ren.
ren.
oon.

(s. H. W.
N. H. M.

ifes.	8	5
5 35	8	55
5 31	9	45
7 39	10	35
8 37	11	25
9 46	12	15
10 47	1	4
11 47	1	53
orn.	2	42
12 47	3	31
13 47	4	20
14 47	5	9
15 47	5	58
16 47	6	47
17 47	7	36
ets.	8	25
18 10	9	17
19 29	10	9
20 39	11	1
21 49	11	53
22 59	12	45
23 9	1	37
orn.	2	28
24 5	3	19
25 15	4	10
26 25	5	1
27 35	5	58
28 45	6	43
29 55	7	34
ifes.	8	25
30 20	9	15

18th " Arrived the Phoenix Packet with the Oct^r Mail in 58 Day from Falmouth. ———

25th " Sailed the Phania Packet for New York. ——— Also Mellen Bowyer (Bouters) Privateer on a cruise. ———

30th " Sailed Cochrane's ship Isabella for London. ———

Li
He
—
—
—
—
—
C
M
La
C
A
J
Co
T
an
Co
W
S
S
S
R.
Co
J.
Ed
Be
Eli
C
He
W
—
Sec
D
Ch
Att
Sol

PROVINCE OF NOVA-SCOTIA.

SIR JOHN WENTWORTH, Baronet, L L D.
 Lieutenant Governor and Commander in Chief, in and over His
 Majesty's Province of Nova-Scotia, and its Dependencies, Vice
 Admiral of the same, &c. &c. &c.

HIS MAJESTY'S COUNCIL.

Hon. Sampson Salter Blowers	Hon. Charles Morris
— Richard Bulkeley	— John Halliburton
— Henry Newton	— Henry Duncan
— Alexander Brymer	— James Delancy
— Isaac Deschamps	— Benning Wentworth.
— Thomas Cochran	— James Brenton.

MEMBERS OF THE HOUSE OF ASSEMBLY 1799.

<i>County of Halifax.</i>	<i>County of Shelburne.</i>	<i>Cornwallis.</i>
Mich. Wallace, Esq.	Step. Skinner, Esq.	Wm. Baxter, Esq;
Law. Hartthorne Esq.	Geo. Grassie, Esq.	<i>Falmouth.</i>
Charles Morris, Esq.	<i>County of Sydney.</i>	J. Northup, Esq;
James Stuart, Esq.	John Stuart, Esq;	<i>Newport.</i>
<i>County of Annapolis.</i>	Tho. Cutler, Esq;	S. Dimock, Esq;
Tho. Millidge, Esq.	<i>Onslow.</i>	<i>Amherst.</i>
James Moody, Esq.	Daniel Eaton, Esq;	Thomas Lusby, Esq;
<i>County of Cumberland</i>	<i>Truro.</i>	<i>Windsor.</i>
Wm. Freeman, Esq.	Mat. Archibald, Esq;	John M' Monagle,
Sam. Embrie, Esq.	<i>Town of Halifax.</i>	Esquire.
<i>Queen's County.</i>	Wm. Cochran, Esq;	<i>Liverpool.</i>
Simeon Perkins, Esq.	John G. Pyke, Esq;	Samuel Hart, Esq;
R. J. Uniacke, Esq.	<i>Londonderry.</i>	<i>Yarmouth.</i>
<i>County of Lunenburg.</i>	R. M' Elhinney, Esq;	S. S. Poole, Esq;
J. W. Schwartz, Esq.	<i>Annapolis.</i>	<i>Barrington.</i>
Edward James, Esq.	Tho. Barclay, Esq;	John Sargent, Esq;
<i>King's County.</i>	<i>Granville.</i>	<i>Digby.</i>
Benj. Belcher, Esq.	Alex. Howe, Esq;	Henry Rutherford,
Elisba Dewolf, Esq.	<i>Lunenburg.</i>	Esquire.
<i>County of Hants.</i>	John Bolman, Esq;	<i>Shelburne.</i>
Hest. M'Lean, Esq.	<i>Horton.</i>	C. Campbell, Esq;
Wm. C. Tonge, Esq.	Sam. Leonard, Esq;	

Secretary and Register of the Province, — Hon. Ben. Wentworth.
 Deputy Secretary and Deputy Register, — James Gautier, Esq;
 Chief Surveyor of Lands, — Hon. Charles Morris.
 Attorney General, — Richard John Uniacke, Esquire.
 Solicitor General, — James Stuart, Esquire.

Speaker of the House of Assembly,—Richard John Uniacke, Esq;
Clerk of the House of Assembly.—James B. Franklin, Esquire.
Prothonotary and Clerk of the Crown; William Thomson, Esq;
Treasurer; Michael Wallace, Esquire.
Naval Officer; William Cottonnam Tonge, Esquire.

His Majesty's Supreme Court of the Province.

Hon. Sampson S. Blowers.—Chief-Justice. | Hon. Isaac Deschamps, and James
 Justice. | Brenton.—Justices.

Provincial Court of ADMIRALTY.

Hon. Richard Bulkeley, Judge | Cha. Morris, jun. Esq; Register.
 Hon. James Breton, Surogate. | James Putnam, Esq; Marshal.
 R. J. Uniacke, Esq; Adv. Ge.

Court of CHANCERY.

Sir John Wentworth, Lieutenant-Governor, Chancellor.
 Hon. Richard Bulkeley, Master of Rolls and Register.
 James Gautier, Esquire, Deputy Register.

Court of ERROR, His Majesty's Council.
 — of MARRIAGES and DIVORCE, His Majesty's Council.

Court of ESCHEAT and FORFEITURES.

Hon. Rich. Bulkeley, Commissioner. | James Gautier, Clerk.

Justices of the Inferior Court of Common Pleas.

<i>County of Halifax.</i>	<i>King's County.</i>	<i>Co. of Shelburne,</i>
Hon. Henry Newton, Jonathan Binney, Francis Green, Michael Wallace, Daniel Wood, Esqrs.	John Burbidge, John Chipman, Gard. Dennison, Elitha Dewolf, Will. Campbell, Esqrs.	Nicholas Ogden John Sargent, Gideon White, and George Grassie, Esqrs.
<i>County of Annapolis.</i>	<i>Queen's County.</i>	<i>District of Yarmouth.</i>
Alexander Howe, David Seabury, Josiah Jones, Tho. Millidge, Isaac Bonnell, Esqrs.	Simcon Perkins, William Johnston, Samuel Freeman, Esqrs	John Crawley Nathan Utley, and Sheldon Poole, Esqrs.
<i>County of Lunenburg</i>	<i>County of Hants.</i>	<i>District of Colchester</i>
John Creighton, Joseph Pernette, D. C. Jeßen, Jonathan Prescott, J. C. Rudolph, Esqrs.	H. Monk George Deschamps, Joseph Gray Hector McLean and W. C. Tonge, Esq.	Hugh Denoon Robert Pagan, and John Dawson, Esqrs.
	<i>Co. of Cumberland.</i>	<i>County of Sydney</i>
	Charles Baker, Wm. Freeman, Thomas Lutby, Esqrs.	John Stuart George Dawhins Thos. Cutler, and Jas. Stewart, Esqrs.

Hon.
 John
 W.
 St.
 G.
 D.
 Fu.
 H.
 Ch.
 ton.
 Pa.
 W.
 Tu.
 W.
 Al.
 Jo.
 Eric.
 Phin.
 Mi.
 Jo.
 Th.
 Au.
 Ro.
 Ru.
 Josep.
 Ru.
 Joh.
 John.
 Cra.
 Edw.
 Rel.
 Gra.
 nah.
 Jau.
 Edward.
 J. P.
 Mo.

Justices of the Peace throughout the Province.

Hon. S. S. Blowers	— Tho. Cochran	— James Delaney
— Richard Bulkeley	— Charles Morris	— Ben. Wentworth
— Henry Newton	— J. Halliburton	— James Brenton
— Alex. Brymer	— Henry Duncan	R. J. Uniacke, Esq.
— Isaac Deschamps		James Stuart, Esqr.

JUSTICES OF PEACE.

County of Halifax.

John Newton, Esquire; Custos Rutulorum, Jonathan Binney, George Wm. Sherlock, John George Pyke, Michael Head, William Taylor, Stephen H. Binney, Theophilus Chamberlain, William Jordan, James Gautier, William Cochran, Charles Morris, jun. Daniel Wood, Lewis Davis, William Thompson, John Philipps, Michael Wallace, James Fulton, James Yuil, John Harris, Eliakim Tupper, Robert Archibald, Hugh Denoon, Andrew Belcher, William Forsyth, John Solomon, Charles Hill, Lawrence Hartthorne, Richard Kidston, Philip Marchinton, Jonathan Tremain, James Clarke, John Wm. Schwartz, Robert Pagan, John Dawson, James Archibald, James Sutherland, John Geo. Weaver, Edward Mortimer, Robert Geddes, Alexander Stuart, Samuel Tupper, Hibbert Newton Binney, William Logan, John Faulkner, William Cutting, Daniel M'Curdy, Daniel Morrison, Joshua Marsh, Alexander Waugh, James Moore, Thomas Wood, Clerk of the Peace, John Woodin, John Bremner, John Dickson, and Daniel Eaton, Esquires.

County of Annapolis.

Phineas Lovet, Christopher Prince, S. Katherns, Benjamin James, Tho. Millidge, Isaac Eannel, Sam. Cheffey, Richard Hill, Alexander Howe, Josiah Jones, Christopher Benson, Andrew Snodgrafs, Edward Thorne, Thomas Williams, William Winniett, Stephen Jones, David Seabury, Amiable Dowsett, Thomas Corawall, William Willet, Moses Shaw, Robert Fitz Randolph, Phineas Lovett, jun. Benjamin Dodge, Henry Rutherford, and Andrew Ritchie, Esquires.

County of Lunenburg.

Joseph Pernette, D. C. Jeffen, Jonathan Prescott, Josiah Marshal, J. C. Rudolf, Casper Woolenhaupt, F. G. Etter, J. Martin, Elisha Cooper, John William Schwartz, J. Donig, and Joseph Rudolf, Esquires.

King's County.

John Burbidge, John Chipman, John Bishop, junior. Jonathan Crane, Jonathan Shearman, Gurdon Dennison, Daniel Bowen, Edward Potts, Robert Walker, John Fraser, Elisha Dewolf, Benjamin Belcher, Colin Campbell, William Campbell, T. Ratchford, B. Gerrish Gray, E. Taylor, James Kerr, John Thomas Hill, John Allison, Elkannah Morton, John Fillis, Joseph Prescott, Stephen Harrington, and James Ratchford, Esquires.

County of Cumberland.

Edward Baron, Wm. Freeman, Geo. Foster, Charles Baker, Henry Purdy, J. Puffsey, George Oxley, jun. Thomas Lusby, John Stewart, Alpheus Morse, Gibbert Purdy, and Stephen Tuttle, Esquires.

Queen's County.

Simeon Perkins, William Johnstone, William Freeman, Samuel Hunt, John Thomas, Elisha Hopkins, Hallit Collins, Joseph Bass, Nathan Tupper, Isaac Dexter, Bartlet Bradford, and Joshua Newton, Esquires.

County of Hants.

G. H. Monk, G. Deschamps, Jos. Gray, J. Northup, Constant Church, J. Sandford, John Emerson, Duncan Campbell, Hector M'Lean, Benjamin Dewolt, Rich. Cunningham, Colin Campbell, John M'Monagle, John Bond, William Cottnam Tonge, Daniel M'Neil, John Clarke, Peter Shey, Otho Schwartz, Jonathan Snelling, John M'Colla, Shubael Dimock, John Walker, John Chambers, William Smith, Isaac O'Brien, William Salter and Joshua Sandford, Esquires.

County of Shelburne.

John Crawley, R. M'Kinnon, Ephraim Cook, Archibald Smith, Joseph Durfee, Nicholas Ogden, David Thompson, Joshua Froit, John Homer, John Coffin, Ebenezer Parker, Alexander Leckie, Sam. S. Poole, Benjamin Barnard, Gideon White, Samuel Campbell, Edward Brinley, Benoni Dentremond, Nathaniel Richards, Samuel Marshall, James Kelly, Colin Campbell and Geo. Grassie.

County of Sydney.

Timothy Wm. Hierlihy, Geo. Dawkins, Joseph Marshal, Daniel M'Niel, Lifford Waldron, George Whitmore, John Stuart, Thomas Cutler, William Campbell, and John Legget, Esquires.

Commissioners for taking Special Bail in the Country, on Actions, depending in the Supreme Court.

ANNAPOLIS: Wm. Winniet, Esq;	DIGBY: Richard Hill, Esq;
CORNWALLIS: J. Burbidge, Esq;	CUMBERLAND: Cha. Baker, Esq;
HORTON: Sam. Dennison, Esq;	LUNENBURG: Fr. Rudolph, Esq;
WINDSOR: W. H. O. Halliburton	COLCHESTER: James Fulton,
SHELburne: C. Campbell, Esq;	

Judges of the Court for the Probate of Wills.

Charles Morris, Junr. Esq; Surrogate-General.

Annapolis: Wm. Winniett, Esq;	Shelburne: C. Campbell, Esq;
Cumberland: Charles Baker, Esq;	Sydney: John Stuart, Esq;
Lunenburg: J. Creighton, Esq;	King's County: _____, Esq;
Hants: Hon. Isaac Deschamps.	Queen's County: S. Perkins, Esq;
Yarmouth: S. S. Pool, Esq;	

Officers of His Majesty's Customs.

Hon. Henry Newton, Collector.	Mr. John H. Flieger, Gauger.
John Slayter, Esq; Compt roller,	Isaac Messingham, } Tide
John Newton, Esq; Surveyor and Searcher.	Hammond Green, } Waiters.

Officers for collecting the Provincial Duties.

John Newton, and Hibbert Newton Binney, Esquires, Collectors. Daniel Wood, Esq; Inspector and Searcher. Mr. John Cleveland, Collector of Licence Duty.

Mr. Joh
Mr. Jo
Mr. Ho

Collecto

James
David T

SURVE

His

NC

James G

Richard

James S

Edward

Foster H

John C

John

From th

[J]

J

Edw

T

From Van

-Ja

From the

Mr. John H. Flieger, Gauger.
Mr. John Selby, Land Waiter.
Mr. Henry Newton, jun. Assistant.

Collectors of Light Duty. { HALIFAX: John Newton, Esquire.
DIGBY: _____,
ANNAPOLIS: _____,
SHELburnE: Edward Brinley, Esquire.

PORT OF SHELburnE.

James Bruce, Esquire. Collector. | A. S. Bruce, Esq; Sur. and Searcher.
David Thompson, Esq; Comptroller. | Mr. Richard Brazel, Gauger.

SURVEYOR-GENERAL of WOODS in the PROVINCE of NOVA-SCOTIA, and all other His Majesty's Territories in NORTH-AMERICA.

His Excellency Sir John Wentworth, Baronet.

NOTARY PUBLICK's by KING's AUTHORITY.

James Gautier, Esquire. | James Clark, Esquire.

PROVINCIAL NOTARIES.

Richard John Uniacke, Esquire. | C. Campbell, Esq; Shelburne.
James Stuart, Esquire. | N. P. Olding, Esquire, Pictou.
Edward Brenton, Esquire. | Peleg Wiswell, Esq; Annapolis.
Foster Hutchinson, Esquire. | W. Halliburton, Esq; Windsor.

COMMISSIONERS OF ROADS.

From Sackville Bridge to Pence's Farm.

John George Pyke; Daniel Wood; and Godfrey Schwartz.

From Pence's Farm to the three Mile Plain.

John Emerson; Richard Cunningham; Rufus Fairbanks.

From three Mile Plain to Windsor River Bridge below the Forks.

J. G. Monk; Jeremiah Northup; Dennis McHaffey.

From Windsor Road to Gay's River.

John Hutchinson; George Muir; Samuel Mercer.

From Truro to Pictou.

Edward Mortimore; James Archibald; John Dawson.

From Gay's River to Truro.

Thomas Pearson; J. Archibald; James Dickson.

From Vance's house to the Southern Boundary of the County of Cumberland.

James Fulton; William M'Kinn; Joseph Embrie.

From the Southern Boundary of the River Philip to Alpheus Morse in Amherst.

James Stuart; Alpheus Morse; Gabriel Purdy.

From Patridge Island to Napan Bridge.
Encuezer Taylor; James Raichford; Robert Reed.

*From the 3 Mile Brook to Bishop's in Horton, the Work to be begun
at the Bridge and made towards the 3 Mile Plain.*

John Bishop; Elia Dewolf; Peter Shey.

From the Bridge on the Avon to Bishop's.
Jeremiah Northup; Benjamin Belcher; William Campbell.

*From Webster's house on the Annapolis Road to the Western Bound-
ary of King's County.*

John M'Gee; John Sharp.

From the Western Boundary of Aylesford to Hick's Ferry.

John Temple, De St. Croix; John Ruggles.

From or for Allen Creek Bridge.

William Robertson; Stephen Sniden.

From Liverpool to Nestor.

Simeon Perkins; Hallet Colin; Joseph Barfe.

Commissioners of the Revenue.

Hon. Charles Morris, Hon. Benning Wentworth; Richard John
Uniacke, Michael Wallace, and Lawrence Hartshorne, Esqrs.

Commissioners for Public Buildings.

Michael Wallace; William Cochran; John Beckwith; And-
rew Belcher; and Foster Hutchinson, Esquires.

Commissioners for Public Markets.

Michael Wallace; John George Pyke; and Charles Hill, Esqrs.

Health Officers throughout the Province.

Dr. Gschwind for *Halifax*.—Edw. Brinley, Esq; for *Shelburne* —
Nathan Tupper for *Queen's county Liverpool*.—Dr. John Bol-
man, for *Lahave and Lunenburg*.—Edward Montimore, Esq;
for *Pictou*.—John M'Monagle, Esq; for *Windfor*.—Jonathan
Crane, for *Horton and Cornwallis*.—Dr. Hinkel for *Annapolis*.
—Henry Rutherford for *Digby*.—Samuel Sheldon Poole, for
Yarmouth, Barrington and Argyle.—William Campbell, Esq,
for the *Gut of Canso, Country Harbour, and Manchester*.

1st Janu
18th do
30th do
17th M
25th d
23d Ap
29th M
Char
4th Ju
24th do
12th A
Birth
22d Sep

1st Janu
18th do
Day
17th M
23d Apr
4th Jun

John G
Richard
Michael
Charles
Richard
Mr. Joh
James C
William

FIR

Benj. Br
William
Ephraim
Samuel
William
Michael

SITT

At Hall
of Jan
secon
Tuesd
At Win
day o
At Hor

HOLIDAYS at the PUBLIC OFFICES.

1st January.—New Year's Day.	29th Sept.—Michaelmas Day.
18th do.—Queen's Birth Day.	25th Oct.—George III Accession.
30th do.—King Charles Martyr.	5th Nov.—Gun-powder Plot.
17th March.—St. Patrick.	30th do.—St. Andrew.
25th do.—Lady Day.	25th December.—Christmas Day.
23d April.—St. George.	26th do. } Christmas Holidays.
29th May.—Restoration of King Charles II.	27th do. }
4th June.—King's Birth Day.	28th do. }
24th do.—St. John.	Good Friday.
12th August.—Prince of Wales's Birth-Day.	Easter Monday.
22d Sept.—George III crowned.	Easter Tuesday.
	Whit-Monday.
	Whit-Tuesday.

LEVEE DAYS at the GOVERNMENT-HOUSE.

1st January.—New Year's Day.	12th Aug.—Prince of Wales birth Day.
18th do.—Queen Charlotte's birth Day.	22d Sept.—George III crowned.
17th March.—St. Patrick.	25th October.—George III Accession.
23d April.—St. George.	30th November.—St. Andrew.
4th June.—King's birth Day.	

FIRE-WARDS for the TOWN of HALIFAX.

John George, Pyke, Esquire.	Mr. William Millet,
Richard John Uniacke, Esquire.	Elias Marshall, Esquire.
Michael Wallace, Esquire.	Mr. George Bell.
Charles Hill, Esquire.	James Clarke, Esquire.
Richard Kidston, Esquire.	Mr. Thomas Ellis,
Mr. John Cleaveland.	Mr. John Stealing.
James Cochran, Esquire.	Mr. Andrew Liddle.
William Lawlor, Esquire.	

FIRE-ENGINE COMPANY for the TOWN of HALIFAX.

Benj. Bridge, Captain.	Thomas Adams,	John McKinze,
William Milward,	Archibald Wilson,	John Head,
Ephraim Whifton,	John Brown,	Alexander Smith,
Samuel King,	Thomas Donaldson,	Kenneth McKinzee,
William Hogg,	Alexander Clunies,	Jeremiah Boyer,
Michael Perkins,	Robert Milne,	Alexander Hacket,

SITTINGS of the COURTS and SESSIONS in this PROVINCE.

SUPREME COURT.

At Halifax :—The second Tuesday of January, and Tuesday of April, second Tuesday of July, second Tuesday of October.	the Monday following the Sitting of the Court at Windsor.
At Windsor :—On the third Thursday of September.	At Annapolis :—On the Monday following the Sitting of the Court at Horton.
At Horton. — In King's County, on	At Annsberril. — The first Tuesday of June.

INFERIOR COURT of COMMON PLEAS.

At Halifax.—On the first Tuesdays of the Month of March, June, September and December.

At Annapolis.—On the first Tuesday of April, and the first Tuesday of November.

At Lunenburg.—On the second Tuesday of April, and second Tuesday of October.

At Horton.—The third Tuesday of June, and first Tuesday of Octo.

At Liverpool.—On the second Tuesday of April, and second Tuesday of November.

At Tutket Village.—On the first Tuesday of April, and last Tuesday of October.

At Shelburne.—On the first Tuesday of March first Tuesday of Nov.

At Onslow.—On the first Tuesday of January and first Tuesday of Oct.

At Walmsley.—On the third Tuesday of January and third Tuesday of July.

At Windsor.—On the first Tuesday of April, and the last Tuesday of October.

At Guyborough, in the County of Sydney.—The first Tuesday of March and first Tuesday October.

At Amherst.—On the next day after Sitting of the Supreme Court in the Month of June and on the last Tuesday of October.

SESSIONS of the PEACE.

At Halifax.—On the first Tuesday of March, the first Tuesday of June, the first Tuesday of September and the first Tuesday of December.

At Lunenburg.—The second Tuesday of April, and second Tuesday of October.

At Horton.—The third Tuesday of June, and first Tuesday of Octo.

At Liverpool.—The second Tuesday of April, and second Tuesday of November, and last Tuesday of October.

At Barrington.—The first Tuesday of November.

At Tutket Village.—The first Tuesday of April.

At Amherst.—On the next day af-

ter the Sitting of the Supreme Court in the Month of June and on the last Tuesday of October.

At Onslow.—On the first Tuesday of January and first Tuesday of July.

At Walmsley.—On the third Tuesday of January and the third Tuesday of July.

At Shelburne.—The last Tuesday of March, and last Tuesday of October.

At Windsor.—The first Tuesday of April, and last Tuesday of October.

At Guyborough, in the County of Sydney.—The first Tuesday of March and first Tuesday of October.

OFFICERS of His Majesty's NAVAL-YARD.

Hon. Henry Duncan, Esq; Com-missioner.

Isaac Coffin, Esq; Acting Com-missioner.

Mr. Provo F. Wallis, and Mr. Alex. Farquarson, Clerks to the Com-missioner.

Titus Livie, Esq; Naval Officer and Storekeeper.

Mr. Alex. Anderson, and Mr. B.

James, Clerks to the Naval Store-keeper.

Elias Marshal, Esq; Master Ship-wright.

Mr. Thomas Wood, Clerk to the Master Shipwright.

Jno. Jackson, Esq; Master At-tendant.

Mr. John Ross, Clerk to the Mas-ter Attendant.

Mr. W
Ship
Mr. W
Carp
Mr. Jo
Mr. Jo
make
Mr. Jo
sons.

Ho
M

Under

Robert
John S
G. G.
John M
A. V.
G. V.
Ehen. C
Wm. C
William
Joseph
Paul C
Jno. C

St
J. O.
H. G.
James
John B
John M
John C
Willia

Thoma

A
Robe
Edw.
W. J.
Jeim
John
Georg

Mr. William Hughes, Foreman of Shipwrights.
Mr. William Lee, Foreman of House Carpenters.
Mr. John Brush, Foreman of Smiths
Mr. John Gardner, Foreman of Sail-makers.
Mr. John King, Foreman of Masons.

Mr. James Robertson, Foreman of Labours.
Mr. David Ridgeway, Boatswain of the Ordinary.
Mr. George Andrew, Purveyor of Masts.
Mr. Duncan Clark Surgeon.
Mr. Stephen Cullin, Gate Porter.

His MAJESTY'S NAVAL-HOSPITAL.

Hon. John Halliburton, Surgeon and Agent.
Mr. Robert Hume, Assistant.

OFFICERS of His Majesty's Ships on this Station,

Under the Command of GEORGE VANDEPUT, Esq; Admiral of the Blue, &c. &c. &c.

ASIA, 64 guns.

Robert Murray, Esquire; Captain.
John Sykes, 1st Lieutenant.
G. G. Lenock, 2d Lieutenant.
John Mowatt, 3d Lieutenant.
A. V. Drury, 4th Lieutenant.
G. V. Crosby, 5th Lieutenant.
Eben. Geale, 6th Lieutenant.
Wm. Chalmers, Master.
William Cathers, Surgeon.
Joseph Trounsell, Purser.
Paul Crebin, Captain Marines.
Jno. Cooksley, Chaplain.

St. ALBANS, 64 guns.

J. O. Hardy, Esquire; Captain.
H. G. Morris, 1st Lieutenant.
James Stewart, 2d Lieutenant.
John Bate, 3d Lieutenant.
John M'Leod, 4th Lieutenant.
John Code, 5th Lieutenant.
William Scargil, Master.
— Fleming, Surgeon.
Thomas Phelp, Purser.
— Germaine, Lieut. Marines.
— Herring, Chaplain.

ASSISTANCE, 50 guns.

Robert Hall, Esquire. Captain.
Edw. O'Brien, 1st Lieutenant.
W. J. Symons, 2d Lieutenant.
Jeremiah Skelton, 3d Lieutenant.
John Head, 4th Lieutenant.
George Paton, Master.

R. Cinnamon, Surgeon.
John Bignel, Purser.
J. W. Cartwright, Capt. Marines.
— Wright, Chaplain.

CLEOPATRA, 32 guns.

H. Pellow, Esquire, Captain.
Joseph Taylor, 1st Lieutenant.
W. Richardson, 2d Lieutenant.
Wm. Buckmaster, 3d Lieutenant.
Thomas Penrose, Master.
Jno. Fairfoul, Surgeon.
W. Kitchingham, Purser.
J. N. N. D'Astry, Lieut. Marines.

BOSTON, 32 guns.

J. E. Douglas, Esquire; Captain.
Jonathan Christian, 1st Lieutenant.
Thomas Maynard, 2d Lieutenant.
George George, 3d Lieutenant.
— Dillon, Master.
Bryan O'Burn, Surgeon.
George Field, Purser.
— Wooldridge, Lieut. Marines.

HIND, 28 guns.

J. Larcome, Esquire. Captain.
Fran. Stanfell, 1st Lieutenant.
J. E. Froud, 2d Lieutenant.
Jn. Scully, Master.
Ralph Cumming, Surgeon.
T. R. Sugars, Purser.
— Meredith, Lieut. Marines.

PORCUPINE, 24 Guns.
 A. J. Evans, Esquire, Captain.
 John Evans, 1st Lieutenant.
 Auther Stow, 2d Lieutenant.
 H. N. Baker, Master.
 Don. M'Queen, Surgeon.
 John Pearce, Purfer.
 — Clark, Lieutenant Marines.

PHEASANT, 16 guns.
 Henry Carew, Esquire, Captain.
 George Wm. Blamey, 1st Lieut.
 James Money, 2d Lieutenant.
 Francis Whitney, Master.
 John Irvin, Surgeon.
 Mich. Collins, Purfer.

TERMAGANT, 18 guns.
 Wm. Skipsley, Esquire; Captain.
 Thomas Stamp, 1st Lieutenant.
 Robert Loyd, 2d Lieutenant.
 Francis Clark, Master.
 — Edmonds, Surgeon.

— Williams, Purfer.
FLY, 16 guns.
 Zachariah Mudge, Esq; Captain.
 R. C. Reynolds, 1st Lieutenant.
 Kenneth Morrison, 2d Lieutenant.
 —, Master.
 —, Surgeon.
 H. E. Gaukey, Purfer,

SWAN, 14 guns.
 Jacob Walton, Esquire; Captain.
 J. W. Marshall, 1st Lieutenant.
 John Nightingale, 2d Lieutenant.
 Daniel Heisterman, Surgeon.
 John Brimar, Purfer.

LILLY, 14 guns.
 Joseph Spears; Esquire, Captain.
 S. S. Bassau, 1st Lieutenant.
 James Cunningham, Master.
 C. E. Andrews, Purfer.

STAFF OF THE ARMY,

Under the Command of His Royal Highness the Duke of KENT.

Major-General Bowyer,
 Major-General Despard,
 Adjutant-General Frederick Aug.
 Wetherall,
 Quarter Master General, Major G.
 S. Smith.
 Major of Brigade, Robert Walker,
 Aid de Camps to his Royal High-
 ness the Duke of Kent; Major
 G. S. Smyth; Capt. Hardyman;
 Capt. Wright; Capt. Dodd.
 Extra Aid de Camp and Military
 Secretary; Major Gordon,
 Assistant Military Secretary; Lieut.
 Shekleton.
 Capt. Bowyer; Aid de Camp to
 Major General Bowyer
 Lieut. Despard; Aid de Camp to
 Major General Despard.
 Commanding Royal Engineer;
 Capt. Fennwick.
 Town Major; Winkworth Tonge,
 Commissary General, British North
 America; George Binley, Esq;

Deputy Commissary General Pro-
 vince of Nova-Scotia, New-
 Brunswick, Islands of Newfound-
 land, Prince Edward, and Cape-
 Breton; John Butler Butler, Esq.
 Deputy Paymaster to the Forces;
 Hon. Alexander Brymer.
 Assistant Commissary General Pro-
 vision Branch; James Clark, Esq.
 Assistant Commissary General Fuel
 Branch; Foster Hutchinson, Esq.
 Deputy Barrack Master General;
 James Putnam, Esq;
 Ordnance Storekeeper; Clement
 Horton, Esq;
 Barrack Master; Stephen H. Bin-
 ney, Esq;
 Clerk of the Cheque; James Spry
 Heaton, Esq;
 Acting Comptroller of Army Ac-
 counts; John Beckwith, Esq;
 Deputy Judge Advocate, to the
 Forces in British Provinces in
 North America; Edward B.
 Brenton, Esq;

Assistant
 Thom
 Garrison
 Assistant
 and G
 Surgeon

Under

Lieut
 Thomas

70

His R
 the I
 Lie
 John L
 A. L.

James
 Walter

Thoma
 Robert
 J. A.
 Freder
 Edward
 John
 Brent
 J. M.
 Alex

Earl
 G
 I
 Geo
 John

Art

Assistant-Inspector of Hospitals,
Thomas Irwin.
Garrison Surgeon, James Boggs.
Assistants, J. Boyd, Joseph Pierce,
and G. Philipps.
Surgeon to the Garrison at Anna-

polis; George Henkel.
Surgeon to the Ordnance and Ar-
tillery; W. J. Almon.
Chaplain to the Garrison; Rev. J.
J. Wetherall.

OFFICERS of the REGIMENTS.

Under the Command of General His Royal Highness the Duke of
KENT.

ROYAL ARTILLERY.

Lieut. Colonel.
Thomas Desbrisay

Capt. Lieut.
Robert Wright

1st Lieutenants.
G. Mercer
Tho. Desbrisay

7th REGIMENT of FOOT, (or ROYAL FUSILIERS.)

Colonel.
His Royal Highness
the Duke of KENT.

Lieut. Colonels.
John Despard
A. L. Layard
Major.

James Burrowes
Walter Cliffe

Captains.
Thomas L'Estrange
Robert Walker
J. A. Prevost

Frederick Hardyman
Edward J. S. Byng
John Birmingham
Brenton Halliburton
J. M. Nooth

Capt. Lieut.
Alex. Stirling
Lieutenants.

Robert Burton
William Bernard
B. V. Layard
William Despard
Robert Robertson
H. G. Howe
Winckworth Tonge
John Parsonage
Cha. D. Shekleton
Thomas Fitzsimons
Donald Campbell
Joseph Taylor
Lewis J. Skinner
Hon. E. Cochrane
Charles Nowell
Hutton Rowe
Alex. Walker
Christopher Taylor
Robert Finlay
Edward O'Hara
Rich. Ferris

Mathew Teighe
Nat. R. Thomas
James Bourke
Ambrose Sutton
William Roebuck
Patrick Hayes
Hector M'—
Frederick A. Hervey
Henry Nooth.

Paymaster.
Henry J. Reynette
Chaplain.
John Wetherall
Adjutant.

John Parsonage
Quarter Master.
Joseph Parkes
Surgeon.

John Copeland
Assistant Surgeon.
John Irvin

66th (or BERKSHIRE,) Regiment of Foot.

Colonel.
Earl of Clanricarde, Lt.
Gen.

Lieut. Colonels.
George Urquhart
John Hatton

Majors.
Arthur Benson, Lt. Col.

James W. Gordon
Captains.
Hon. Tho. Jones, Maj.

Tho. Blakeney
John Birch
John Ward

Tho. B. Campbell
Allen Cameron

James Guthrie
Walter Synnot
Charles Nicol

Capt. Lieut. and
Captain.
Joseph Gabbett

Lieutenants.
Richard Lloyd

David Gunn
 Charles Robinson
 Francis Whitfield
 Edward Lafcells
 ——— Colton
 Henry Haire
 Peter M^c Pherfon
 John Jones
 William Reeves
 H. T. Lawton
 Thomas S. Lyle
 Jer. Fitzgerald
 J. W. Pearce

Ham. Newton
 Wm. Fortescue
 H. J. Riddell
 Edward Stokes
 John Innes
 John Dehouse
 ——— Ensigns.
 ——— Sanders
 ——— Frances
 George Urquhart
 James Baird
 John Kincher
 George Nicholls

William Gun
 Paymaster.
 Wm. B. Brinley
 Adjutant.
 David Gun
 Quarter Master.
 Tho. B. Campbell
 Surgeon.
 Jacob Bath
 Assistant Surgeon.
 Wm. Stewart

ROYAL NOVA SCOTIA REGIMENT.

Colonel.
 Sir John Wentworth
 Lieut. Colonels.
 Francis Kearney
 Samuel V. Bayard
 Major.
 George Thesiger
 Captains.
 John Soloman
 Jones Fawson
 Alexander Howe
 John Allen
 William Cox
 Joshua W. Weeks
 Capt. Lieut.
 Job Bennett Clarke
 Lieutenants.
 Thomas Morris

John G. De Greben
 Otho Schwartz
 Philip Kearny
 Eric Sutherland
 Michael Purnett
 George Henry Monk
 Charles Rudolf
 John Corbitt Ritchie
 John Wm. Emerton
 Timothy Ruggles
 Richard W. Green
 Isaac Glennie
 Hibbert Newton
 Thomas A. Winslow
 Alexander Hamilton
 Charles Wm. Solomon
 Ensigns.
 John Fitzsimons

James Moore
 Robert Bayard
 Henry Green
 Thomas Wright
 ——— Gibbons
 Pay Master.
 Benning Wentworth
 Chaplain.
 Robert Stanfer
 Adjutant.
 James Moore
 Quarter Master.
 Alexander Frazer
 Surgeon.
 John Frazer
 Assistant Surgeon.
 Jonathan W. Clarke.

OFFICERS OF MILITIA.

His Excellency Sir JOHN WENTWORTH, Bart. Captain-General.
 Honourable RICHARD BULKELEY, Brigadier-General.
 GEORGE THESIGER, Esq; Aid-du-Camp, to his Excellency the Lieut.
 Governor.
 THOMAS BARCLAY, Esq; Adjutant-General.
 WILLIAM B. BRINLEY, Esq; Commissary.

OFFICERS of the 1st BATTALION of HALIFAX MILITIA.

Colonel:
 Sir John Wentworth,
 Baronet.
 Lieut. Colonel.
 John George Pyke
 Major.
 William Lawlor

James Strachan
 Captains.
 John Boyd G.
 William Millet
 Wenckworth Allan
 Charles Geddes
 James Creighton

Nicholas Smith
 Thomas Fillis
 William Lyon L. I.
 Capt. Lieut.
 Godfrey Jacobs
 1st Lieutenants.
 Martin Wagner

Jonathan Tremain, jun.
George Grassie
Adolphus Vieth
Thomas Wood, G.
Robert Hill
Joseph Davis
John Stealing
Thomas Boggs

Thomas Wallace

2d Lieutenants.

Garret Miller
John Leaver
John Liddell
John W. Pyke, L. I.

Adjutant.
Adolphus Vieth
Quarter Master.
Thomas Austin
Surgeon.
Michael Head
Assistant.
Samuel Head

OFFICERS of the 2d BATTALION of HALIFAX MILITIA.

Colonel.

Lieut. Colonel.
Wm. Cochran
Majors.
Rich. J. Umacke
Wm. Sutherland
Captains..
Andrew Belcher
John Wm. Schwartz
James Sutherland
Charles Morris
Constant Connor
George M'Intosh
James Cochran
Daniel Wood
Samuel Mercer
John Lawson
A. Hinshelwood
John G. Weaver
Miles M'Innes
Wm. M'Keen
Rufus Fairbanks

Tobias Miller
Brevet Capt. Lt.
Wm. Smith
Capt. Lieut.
Alex. Creighton
1st Lieutenants.
James Foreman
Wm. Creighton
Wm. Lawton
Patrick O'Brien
Hugh Bambrick
John Weaver
Alexander Campbell
John Combs
Peter M'Nah
George Bayers
Andrew Wallace
John Lawlor
Thomas M'Gory
Stephen Collins
James Croutcher
Thomas Watson
2d Lieuts.

Benjamin Etter
James Fitzgerald
James Wooden
R. M'Donald
George Dunn
Studders
Alexander M'Donald
P. M'Condahier
James Kidston
Henry Newton
Patrick Ryan
M. Richardson
John Albro
Thomas C. Hill
William Gray
James Butler
L. Mezangeau
William Gallagher
Adj. & Surgeon.
J. E. Gleichwid
Quarter Master.
Michael Bennett

HANTS MILITIA.

Colonel.
George H. Monk
Lieut. Colonel.
Colin Campbell
Major.
John M' Monagle
Captains.
John Emerson
Rich. Cunningham
John Shey
Peleg Sandford
Constant Church

Neal M'Gachy
John Sneling
Jebu Moshar
D. Whidden
William Smith
Capt. Lieut.
Nathaniel Thomas
1st Lieutenants.
John Palmer
John Irish
Robert M'Haffey
Laron Dewolf

John Brown
John Macomber
Wm. Shey
Shubal Demock
Isaac O'Brien
Wm. Northup
William Smith
2d Lieutenants.
David Rudolph, jun.
W. H. Halliburton
Isaac Deschamps
Job Refs

Thomas Allan	Samuel Meek	Christ. Armstrong
Nich. Moshar	M. B. Grant	<i>Quarter Master.</i>
Simeon Irish	Lodovick Hunter	Loran D. wolf
Thomas Smith	Paul Woodworth	<i>Do. of the Troop.</i>
Francis Densmore	<i>Adjutant.</i>	John M' Latchy

CUMBERLAND MILITIA.

<i>Colonel.</i> Edward Baron	Lawrence Bougfore	Luke Harrison
<i>Lieut. Colonel.</i> Henry Purdy	Tho. Stocks Black	Richard Black
<i>Major.</i> Samuel Embree	<i>Capt. Lieutenants.</i> John Black	<i>Ensigns.</i> Lotriges Newcomb
<i>Captains.</i> Gibbert Purdy	<i>Lieutenants.</i> James Dotton	William Baker
George Oxley	Wm. Freeman, jun.	Charles Baker
Andrew Farnser	Elisha Embree	Martin Bent
Wm. Chipman	Samuel Freeman	Charles Molanfon
Thomas Chipman	Gabriel Purdy	James Beaumont
Alpheus Morfe	Wm. Copp	John Oxley
	Peter Angevine	Jon. Tuttle
	Casemire Moluson	Peter Wood

SHERIFFS in the several COUNTIES in this PROVINCE.

<i>County of Halifax.</i> Lewis Wilkins, Esquire.	<i>Queen's County.</i> Nathan Tupper, Esquire.
<i>County of Annapolis.</i> Robert Dickson, Esquire.	<i>County of Shelburne.</i> Thomas Crowell, Esquire.
<i>County of Cumberland.</i> Charles Chandler, Esquire.	<i>Hants County.</i> Benjamin Dewolf, Esquire.
<i>County of Lunenburg.</i> Henry Kaulback, Esquire.	<i>County of Sydney.</i> William T. Hierlthy, Esquire.
<i>King's County.</i> John Thomas Hill, Esquire.	

LIST of the PROVINCIAL GRAND LODGE,

Of the Most Ancient and Honorable Fraternity of Free and Accepted Masons in the Province of Nova Scotia and Masonical Jurisdiction thereunto belonging viz.

The Honorable RICHARD BULKELEY, *Right Worshipful Grand Master.*

The R. W. DUNCAN CLARK, Esq; *Deputy Grand Master.*

The R. W. JAMES CLARKE, Esq; *Senior Grand Warden.*
 The R. W. JOHN BREMNER, Esq; *Junior Grand Warden.*
 The R. W. JOHN SELBY, Gent. *Grand Secretary.*
 The R. W. JOHN WM. SCHWARTZ, Esq; *Grand Treasurer.*
 The Rev. & R. W. BENJ. G. GRAY, *Grand Chaplain.*
 Mr. JOHN TAYLOR, *Deputy Grand Secretary.*
 Mr. WILLIAM WILT, *Grand Pursuivant.*
 Mr. JOHN KELLY, *Grand Tyler.*

LODGES under the Jurisdiction of the Grand Lodge of Nova-
 Scotia, viz.

On the Registry of ENGLAND.

No. 155. Called St. Andrews, at Halifax; first Tuesday in the
 month.

No. 211. Called St. John's, at ditto; first Monday ditto.

On the Registry of IRELAND.

No. 538. A Travelling Warrant in His Majesty's 66th (or Berk-
 shire) Regiment of Foot, now quartered in Halifax,
 second Friday do.

No. 580. A Travelling Warrant in His Majesty's 66th (or Berk-
 shire) Regiment of Foot, now quartered in Halifax,
 third Tuesday do.

On the Registry of Lower Canada.

No. 7. Called Fidelity, a Travelling Warrant in His Majesty's
 7th Regiment of Foot (or Royal Fusiliers) now quar-
 tered in Halifax, fourth Tuesday do.

On the Registry of NOVA-SCOTIA.

No. 2. Called Artillery, held at Halifax, fourth Monday do.

No. 3. Called Parr, held at Shelburne, second Thursday do.

No. 6. Called Digby, held at Digby, first Tuesday do.

No. 7. Called Temple, held at Gysborough, first Tuesday do.

No. 9. Called Chester, held at Chester, first Tuesday do.

No. 10. Called Hiram, held at Shelburne, second Monday do.

No. 11. Called St. George's, held at Cornwallis, first Monday
 ditto.

No. 15. Called Cornwallis, held at Halifax, third Monday do.

No. 18. Called the Royal Navy Lodge held at Halifax, second
 Tuesday do.

No. 19. Called St. George's, held at Margerville New-Brunf-
 wick, second Tuesday do.

- No. 21. Called Sion, held at Suffex's Vale. N. B. first Monday after Full Moon.
- No. 22. Called Solomon's held at Frederiston N.B. first Tuesday ditto.
- No. 23. Called Hiram York, held at Frederiston N. B. second Thursday.
- No. 24. Called Royal Nova-Scotia Regiment Lodge; a Traveling Warrant, held in the Royal Nova-Scotia Regiment.
- No. 25. Called Annapolis Royal Lodge held at Annapolis Royal second Tuesday in the Month.
- No. 26. Called St. John's, held at Charlotte Town in Prince Edward's (late St. John's) Island, second Tuesday do.
- No. 27. Called Hibernia, held at Liverpool, second Tuesday ditto.

A List of the Chiefs and other Officers of the Gen. Grand Chapter of H. R. A. Masons held under the Authority and Sanction of the Right Worshipful Provincial Grand Lodge of Nova-Scotia and Masonical Jurisdiction thereunto belonging viz.

The R. W. DUNCAN CLARK, Esquire.	H P.
The R. W. JOHN BREMNER, Esquire.	K.
The R. W. Brother ROBERT LYON,	S.
The R. W. JAMES CLARKE, Esquire.	R A C.
The R. W. Brother JOHN SELBY.	1st G M.
The R. W. Brother ANDREW LIDDELL.	2d G M.
The R. W. Brother J. W. SCHWARTZ, Esq.	3d G M.
The R. W. Brother JOHN KING.	Z.
The R. W. Brother WILLIAM WILT.	Tyler.

For the Information of Travellers between WINDSOR and PARRSBOROUGH, &c.

THE Parrsborough Packet sails regularly between Windsor and Parrsborough twice in every week, and occasionally three times; but always from Parrsborough every Monday in the Summer season, wind and weather permitting, so as to be at Windsor on Tuesday, and will sail from thence the first High-Water that happens, at or after eight o'clock in the Forenoon, of that Day.—The Passage Money for each person is five Shillings, and the freight for Horses and Neat Cattle is seven Shillings, and Six Pence per head. The vessel is Forty Two Tons Burthen and hath good accommodations for Passengers; and likewise for taking over Horses, Neat Cattle and Sheep, &c.

DISTA
ROY
Road.

From Ha
ville, M
To Wen
To Sprin
To Eglin
To Pence
To Morr
To Mont
To Marg
To Wind
To the F
mouth
To Half
To Bisho

Distance

From Hal
ry to D
To Prest
Mr. Putn
Mr. Port
Mr. Wil
Mr. Lecl
Mr. Rob
Mr. Rob

* Cro
† Fro

DISTANCE between HALIFAX and ANNAPOLIS-ROYAL, with the Houses of Entertainment on the Road.

	MILES.		MILES.
From Halifax to Fort Sack-		To Fowler's	3
villè, Maddocks -	10	To Peck's	6½
To Wenman's Farm	5	To Inglis's Farm	4½
To Springfield	3	To Sharp's	5
To Eglinton	3	To Aylesford Township	
To Pence's Farm	4½	Boundary	6
To Morris	5	To Buskirk's Farm	6
To Montague house	6	To Clermont, (the Bishop	
To Margaret Place	2	of Nova-Scotia's Seat)	1
To Windfor	6½	To Dodge's Farm	7½
To the Ferry House Fal-		To Leonard's Farm	10½
mouth.	2	To Hick's Ferry	6
To Half way River	5	To Annapolis Ferry	15
To Bishop's Farm	7		
	<hr/>		<hr/>
	59		71—130

Distance from HALIFAX to PICTOU, on the New-Road, via MUSQUEDOBOIT, viz.

	MILES.		MILES.
From Halifax across the Fer-		Mr. Alexander Henry's	19
ry to Dartmouth	1¼	Mr. Robert Dunbar's (first	
To Preston, Bradley's	6	Settlement on the West	
Mr. Putnam's Farm	5	Branch of the East River	
Mr. Porter's, do	5	of Pictou)	26½
Mr. William M'Keen's	11	Mr. William M'Kay's	8
Mr. Leckie's	13	Mr. John Frazer's	7
Mr. Robert Archibald's*	4	Across the Harbour to Wal-	
Mr. Robert Geddes's†	4	mflay Court-House	1
	<hr/>		<hr/>
	49¼		61—109¼

* Cross Road from Archibald's to Scot's at Truro 20 Miles.

† From Geddes's to Sheet Harbour Mill, 23 Miles.

ROAD from HALIFAX by TRURO to PICTOU.

MILES.		MILES.	
To Fletcher's Bridge	18	To Scummenger's, Salmon	
To Hall's	8	River	12
To Muir's, Gay's River	12	To M'Gillivry's	14
To Polley's and Dickey's		To M'Connell's	2
Sewiack River	9	To Pictou Town	10
To Blanchard's, Truro	15		
	<hr/>		<hr/>
	62		38—100

ROAD from HALIFAX to FORT CUMBERLAND.

MILES.		MILES.	
From Halifax to Windfor	45	Jeffers's, Head of the River	
To Partridge Island (Parrs-		Hebere	10
borough) by water		Monroe, Barronsfield	12
Crane's	30	Davison, Amherst	8
Lewis's at Half way River		Baxter do, Court House	1
Parrsborough	9	Fort Cumberland	6
Moore do.	1		
	<hr/>		<hr/>
	85		37—122

Another Road from PARRSBOROUGH, by the RIVER
MECAN.

Miles.		MILES.	
Moore at Half way River	85	Coats, Macan Settlement	7
Robert Read, Mecan settle-		Davison, Amherst	8
ment	12	Fort Cumberland	7
	<hr/>		<hr/>
	97		22—111

By the latter Road you clear the Ferry and Sands at Barronsfield, which are often troublesome to Strangers; but, when the Tides are low, the former is the best way, the Ferry excepted.

An ACCOUNT of BUOYS.

Where placed	Depth of Water.	Colour of the Buoy.
Litchfield Rock	15 Feet.	white.
Mars, Rock, between Chedabucta and the Litchfield Rock	21	do.
Point Pleasant Shoal, the S. E. part of it	22 do.	do.
Shoal between Cornwallis and George's Island	30 do.	do.

OU.
MILES.
non
12
14
2
10

8-100

AND.
MILES.

ver
10
12
8
1
6

7-122

RIVER

MILES.

7
8
7

2-111

barrens-
then the
pted.

e Buoy.
hic.
do.
do.
do.

