

**CIHM
Microfiche
Series
(Monographs)**

**ICMH
Collection de
microfiches
(monographies)**



Canadian Institute for Historical Microreproductions/Institut canadien de microreproductions historiques

© 2000

Technical and Bibliographic Notes / Notes techniques et bibliographiques

The Institute has attempted to obtain the best original copy available for filming. Features of this copy which may be bibliographically unique, which may alter any of the images in the reproduction, or which may significantly change the usual method of filming are checked below.

L'Institut a microfilmé le meilleur exemplaire qu'il lui a été possible de se procurer. Les détails de cet exemplaire qui sont peut-être uniques du point de vue bibliographique, qui peuvent modifier une image reproduite, ou qui peuvent exiger une modification dans la méthode normale de filmage sont indiqués ci-dessous.

- | | |
|--|---|
| <p><input checked="" type="checkbox"/> Coloured covers /
Couverture de couleur</p> <p><input checked="" type="checkbox"/> Covers damaged /
Couverture endommagée</p> <p><input type="checkbox"/> Covers restored and/or laminated /
Couverture restaurée et/ou pelliculée</p> <p><input type="checkbox"/> Cover title missing / Le titre de couverture manque</p> <p><input type="checkbox"/> Coloured maps / Cartes géographiques en couleur</p> <p><input type="checkbox"/> Coloured ink (i.e. other than blue or black) /
Encre de couleur (i.e. autre que bleue ou noire)</p> <p><input type="checkbox"/> Coloured plates and/or illustrations /
Planches et/ou illustrations en couleur</p> <p><input type="checkbox"/> Bound with other material /
Relié avec d'autres documents</p> <p><input type="checkbox"/> Only edition available /
Seule édition disponible</p> <p><input type="checkbox"/> Tight binding may cause shadows or distortion along interior margin / La reliure serrée peut causer de l'ombre ou de la distorsion le long de la marge intérieure.</p> <p><input type="checkbox"/> Blank leaves added during restorations may appear within the text. Whenever possible, these have been omitted from filming / Il se peut que certaines pages blanches ajoutées lors d'une restauration apparaissent dans le texte, mais, lorsque cela était possible, ces pages n'ont pas été filmées.</p> <p><input checked="" type="checkbox"/> Additional comments /
Commentaires supplémentaires:</p> | <p><input type="checkbox"/> Coloured pages / Pages de couleur</p> <p><input type="checkbox"/> Pages damaged / Pages endommagées</p> <p><input type="checkbox"/> Pages restored and/or laminated /
Pages restaurées et/ou pelliculées</p> <p><input checked="" type="checkbox"/> Pages discoloured, stained or foxed /
Pages décolorées, tachetées ou piquées</p> <p><input type="checkbox"/> Pages detached / Pages détachées</p> <p><input checked="" type="checkbox"/> Showthrough / Transparence</p> <p><input checked="" type="checkbox"/> Quality of print varies /
Qualité inégale de l'impression</p> <p><input type="checkbox"/> Includes supplementary material /
Comprend du matériel supplémentaire</p> <p><input type="checkbox"/> Pages wholly or partially obscured by errata slips, tissues, etc., have been refilmed to ensure the best possible image / Les pages totalement ou partiellement obscurcies par un feuillet d'errata, une pelure, etc., ont été filmées à nouveau de façon à obtenir la meilleure image possible.</p> <p><input type="checkbox"/> Opposing pages with varying colouration or discolourations are filmed twice to ensure the best possible image / Les pages s'opposant ayant des colorations variables ou des décolorations sont filmées deux fois afin d'obtenir la meilleure image possible.</p> <p style="text-align: center;">Pagination is as follows: p. 169-176.
La pagination est comme suit: p. 169-176.</p> |
|--|---|

This item is filmed at the reduction ratio checked below /
Ce document est filmé au taux de réduction indiqué ci-dessous

	10x		14x		18x		22x		26x		30x	
	12x		16x		20x		24x		28x		32x	

The copy filmed here has been reproduced thanks to the generosity of:

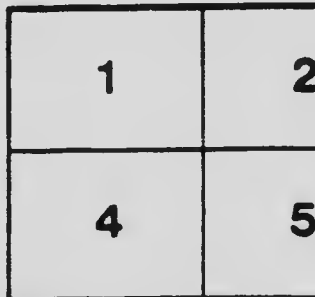
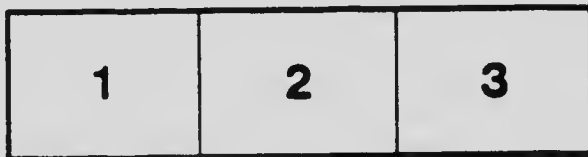
Royal Ontario Museum
Toronto

The images appearing here are the best quality possible considering the condition and legibility of the original copy and in keeping with the filming contract specifications.

Original copies in printed paper covers are filmed beginning with the front cover and ending on the last page with a printed or illustrated impression, or the back cover when appropriate. All other original copies are filmed beginning on the first page with a printed or illustrated impression, and ending on the last page with a printed or illustrated impression.

The last recorded frame on each microfiche shall contain the symbol \rightarrow (meaning "CONTINUED"), or the symbol ∇ (meaning "END"), whichever applies.

Maps, plates, charts, etc., may be filmed at different reduction ratios. Those too large to be entirely included in one exposure are filmed beginning in the upper left hand corner, left to right and top to bottom, as many frames as required. The following diagrams illustrate the method:



L'exemplaire filmé fut reproduit grâce à la générosité de:

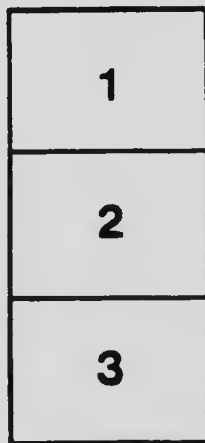
Royal Ontario Museum
Toronto

Les images suivantes ont été reproduites avec le plus grand soin, compte tenu de la condition et de la netteté de l'exemplaire filmé, et en conformité avec les conditions du contrat de filmage.

Les exemplaires originaux dont la couverture en papier est imprimée sont filmés en commençant par le premier feuillet et en terminant soit par la dernière page qui comporte une empreinte d'impression ou d'illustration, soit par le second feuillet, selon le cas. Tous les autres exemplaires originaux sont filmés en commençant par la première page qui comporte une empreinte d'impression ou d'illustration et en terminant par la dernière page qui comporte une telle empreinte.

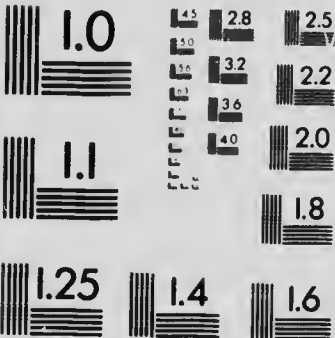
Un des symboles suivants apparaît sur la dernière image de chaque microfiche, selon le cas: le symbole \rightarrow signifie "À SUIVRE", le symbole ∇ signifie "FIN".

Les cartes, planches, tableaux, etc., peuvent être filmés à des taux de réduction différents. Lorsque le document est trop grand pour être reproduit en un seul cliché, il est filmé à partir de l'angle supérieur gauche, de gauche à droite, et de haut en bas, en prenant le nombre d'images nécessaire. Les diagrammes suivants illustrent la méthode.



MICROCOPY RESOLUTION TEST CHART

(ANSI and ISO TEST CHART No. 2)



APPLIED IMAGE Inc

1653 East Main Street
Rochester, New York 14609 USA
(716) 482-0300 - Phone
(716) 288-5989 - Fax

2
7991

Wm. Lawrence M
1910

B.O.N.Z. Separate

FROM THE TRANSACTIONS OF THE ROYAL SOCIETY OF CANADA.

L221

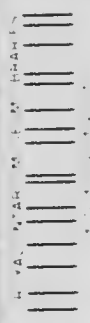
THIRD SERIES—1909-1910

VOLUME III

SECTION IV

Pamp.

Handwritten scribble



LIBRARY
ROYAL ONTARIO MUSEUM
UNIVERSITY OF TORONTO

**Bibliography of Canadian Zoology for 1908
(exclusive of Entomology).**

By

LAWRENCE M. LAMBE, F.G.S.

OTTAWA

PRINTED FOR THE ROYAL SOCIETY OF CANADA.

1910

196

XI.—*Bibliography of Canadian Zoology for 1908 (exclusive of Entomology).*¹

By LAWRENCE M. LAMBE, F.G.S.

(Read May 25, 1909.)

INVERTEBRATA

ECHINODERMATA.

CLARK, AUSTIN H.

Descriptions of new species of Crinoids, chiefly from the collections made by the United States Fisheries Steamer "Albatross" at the Hawaiian islands in 1902; with remarks on the classification of the Comatulida.

Proceedings of the United States National Museum, vol. xxxiv, No. 1608, May 1908, pp. 491-523. Includes a new species *Psathyrometra profundiora* Clark, off Storöby island, Queen Charlotte islands, B.C.

The Nomenclature of the Recent Crinoids.

Idem, vol. xxxiv, No. 1623, August 1908, pp. 435-512.

Certain Canadian Atlantic and Pacific coast forms are included in the list of the crinoids given.

The Genus *Ptilocrinus*.

The American Naturalist, vol. xlii, August 1908, pp. 541-543.

MOLLUSCA.

PILSBRY, HENRY A.

Notes on *Succinea ovalis* Say and *S. obliqua* Say.

Proceedings of the Academy of Natural Sciences of Philadelphia, vol. lx, part 1, 1908, pp. 45-54, with text illustrations.

The species *Succinea ovalis*, Say is distributed from Ontario to the mountains of North Carolina and west to Minnesota and Missouri. According to Dr. Pilsbry *S. obliqua*, Say, 1824 is a synonym of *S. ovalis*.

VERMES.

MCINTOSH, WILLIAM C.

Notes from the Gatty Marine Laboratory, St. Andrews: I. On the foregoing Families: Opheliidae, Scalibregmidae and Telethousae dredged by Dr. Whiteaves in the Gulf of St. Lawrence, Canada.

Ann. and Mag., Nat. Hist., vol. 4, series 8, No. 5, May 1908, pp. 386-387.

"Of the Opheliidae, *Ammotrypaea antipaster*, H. Rathke, is not uncommon and of good size, and *Ammotrypaea cylindricaudatus*, Hansen, was also procured. A fine example of *Ophelia radata*, Della Chiaje, was dredged at station 61, v. z. north northeast of Shediac island, 4th September, 1873, probably in water not more than 10 or 12 fathoms depth, though this is not stated."

¹ Communicated by permission of the Director of the Geological Survey, Department of Mines.

Notes from the Gatty Marine Laboratory, St. Andrews. 6. On the foregoing Families (Spharodoridae, Chloramidae, and Chaetopteridae) dredged in the Gulf of St. Lawrence, Canada, by Dr. Whiteaves. Ann. and Mag. Nat. Hist., vol. 2, series 8, No. 12, December 1908, pp. 549-541.

MOORE, J. PERCY.

Some Polychaetous Annelids of the Northern Pacific Coast of North America.

Proceedings of the Academy of Natural Sciences of Philadelphia, vol. ix, part 11, 1908, pp. 321-364, with text figures.

ARTHROPODA.

CURRIEMAN, JOSEPH A.

Fresh-water Crustacean from Labrador and Newfoundland

Proceedings of the United States National Museum, vol. xxxiii, No. 1590, March 1908, pp. 765-713, plates lvi-lxii.

ORTMANN, ARNOLD E.

Chizopod Crustaceans in the United States National Museum: Schizopods from Alaska.

Proceedings of the United States National Museum, vol. xxxiv, No. 1591, April 1908, pp. 1-10, plate 1.

A new species (*Holmesella anomala*) is described from specimens obtained near Juneau, and in the Strait of Georgia, off Nanaimo, Vancouver island, B.C.

SHARPE, RICHARD W.

A Further Report on the Ostracoda of the United States National Museum.

Proceedings of the United States National Museum, vol. xxxv, No. 1651, November 1908, pp. 336-430, plates l-lxv.

A Gulf of St. Lawrence species *Philomeda brenda* (Baird), known also from British coasts, from Greenland and from Scandinavian harbours, is here described and figured.

VERTEBRATA

FISHES.

BOBDAZ, L.

Les Poissons électriques.

Le Naturaliste Canadien, vol. xxxv, No. 10, October 1908, pp. 151-156.

EVEEMANN, BARTON W. and GOLDSBOROUGH, EDMUND L.

A Check List of the Freshwater Fishes of Canada.

Proceedings of the Biological Society of Washington, vol. xx, 1908, pp. 89-120

The authors compute the freshwater fish-fauna of Canada to consist of 145 species representing 25 families and 67 genera. Included is a list of noniual species of freshwater fishes originally described from Canadian waters; of these only 29 are now regarded as valid. A useful bibliography is also given.

GEORGIAN BAY FISHERIES COMMISSION, 1905-1908.

Report and Recommendations (with appendices) of the Common Fisheries Commission appointed to enquire into the Fisheries of Georgian Bay and adjacent waters, pp. 1-55, 1908.

GILL, THEODORE.

The Miller's-thumb and its Habits.

Smithsonian Miscellaneous Collections, vol. III, XVI, part 1, 1908, pp. 101-116.

NAYL, C. W.

Check List of the Vertebrates of Ontario and Catalogue of Specimens in the Biological Section of the Provincial Museum Fishes.

Department of Education, Toronto, 1908, pp. 1-122, with numerous plates and text figures.

A valuable report on the fishes of the Province of Ontario numbering in all 113 species. The excellent illustrations add greatly to the usefulness of the concise descriptions.

ZOOLOGICAL BRANCH, REPORT OF THE, 1907.

The Ottawa Naturalist, vol. xxi, No. 10, January 1908, pp. 198-201. Included in this report is a list of the fishes observed by Mr Andrew Halkett in lakes in Saskatchewan and Alberta.

REPTILIA.

HALKETT, ANDREW.

Note on a young specimen of the Snapping Turtle (*Chelydra serpentina*). The Ottawa Naturalist, vol. xxii, No. 7, October 1908, p. 131.

NATURE LISTE CANADIEN, LE, (Editorial: L'Abbé V. A. Huard).

Une Couleuvre vivipare.

Vol. xxxv, No. 9, September 1908, pp. 132-133.

RUTHVEN, ALEXANDER G.

Variations and Genetic Relationships of the Garter-snakes.

Smithsonian Institution, United States National Museum, Bulletin 61, vol. 33, 1908, pp. vii + 301, with 82 text figures and one half-tone plate.

A monograph of the garter-snakes of North America.

BIRDS.

BENT, A. C.

Summer Birds of Southwestern Saskatchewan.

The Auk, vol. xxv, new series, No. 1, January 1908, pp. 25-35.

BOUTEILLER, JAMES.

List of Birds seen on Sable Island, N.S., from March 28th 1906, to January 1st, 1907.

The Ottawa Naturalist, vol. xxi, No. 10, January 1908, pp. 189-191.

Bird Migration, 1907; Observations made on Sable Island, Nova Scotia.

Idem, vol. xxii, No. 5, August 1908, pp. 96 and 97.

BROWN, W. J.

Nesting of Cooper's Hawk.

The Ottawa Naturalist, vol. xxii, No. 4, July 1908, p. 88.

Nesting of the Bartramian Sandpiper.

Idem, vol. xxii, No. 8, November 1908, p. 161.

CRIDDLE, NORMAN.

Some Bird Habits.

The Ottawa Naturalist, vol. xxii, No. 8, November 1908, pp. 151-156.

The Economic Value of some Common Birds.

The Northwest Farmer, December 20, 1908, pp. 1153-1155; a popular article, illustrated.

EDSON, J. M.

Birds of the Bellingham Bay Region.

The Auk, vol. xxv, new series, No. 4, October 1908, pp. 425-439.

This list of over two hundred and twelve species of birds is included in the present bibliography on account of the geographical position of Bellingham bay which is in the same latitude as, and not far distant from, the southern end of Vancouver island.

EIFRIG, G.

A Long-drawn out Migration: Its Causes and Consequences.

The Auk, vol. xxv, new series, No. 1, January 1908, pp. 1-9.

Dates of Departure in the Fall Migration of the more common Birds of Ottawa.

The Ottawa Naturalist, vol. xvi, No. 10, January 1908, pp. 185-187.

Winter Birds of the Cobalt Region.

Idem, vol. xvii, No. 3, June 1908, pp. 65-66.

EIFRIG, G. and KINGSTON, A. G.

Report of the Ornithological branch, 1907-08.

The Ottawa Naturalist, vol. xvii, No. 2, May 1908, pp. 16-17.

FLEMING, JAMES H.

The Destruction of Whistling Swans (*Olor columbianus*) at Niagara Falls.

The Auk, vol. xxv, new series, No. 3, July 1908, pp. 306-309.

Ontario Bird Notes.

The Auk, vol. xxv, new series, No. 4, October 1908, pp. 486-487.

Reference is here made to Brünnick's Murre, the Gannet (*Sula bassana*), Grinnell's Water-thrush, the Philadelphia Vireo, and to the migration of Horned Owls.

FLETCHER, JAMES.

New Birds for British Columbia.

The Ottawa Naturalist, vol. xxii, No. July 1908, p. 81.

It is here recorded that Charles de B. Green of Fairview, B.C. has added three species of birds to the Canadian list: they are the White-throated Swift, the Canyon Wren and the Sage Thrasher, all found breeding near Mr. Green's home.

GIBSON, ARTHUR.

Unusual Nesting Habit of Slate-colored Junco.

The Ottawa Naturalist, vol. xvii, No. 8, November 1908, p. 164.

MAYNARD, W. L.

Food habits of the Grosbeaks.

U. S. Department of Agriculture, Bureau of Biological Survey, Bulletin No. 32, 1908, pp. 1-92, with coloured plates and numerous text figures.

MOORE, W. H.

Blue birds of the Maritime Provinces.

The Ottawa Naturalist, vol. xvii, No. 9, December 1908, pp. 151-170.
Remarks are made on a number of species of birds in which blue appears in the plumage.

NATURALISTE CANADIEN, L'E. (Editorial)

La Guerre aux Moineaux.

Vol. xxv, No. 8, August 1908, pp. 115-118.

OTTAWA NATURALIST, THE. (Editorial)

Excursions.

Vol. xvii, No. 5, August 1908, p. 52. Contains some remarks on birds found near Ottawa.

SAUNDERS, W. E.

On making the Acquaintance of Individual Birds.

The Wilson Bulletin, vol. xx, March 1908, pp. 13-17.

Nesting of Henslow Sparrow in Ontario.

The Ottawa Naturalist, vol. xvii, No. 6, September 1908, pp. 115-117.

The Worm-eating Warbler in Ontario.

The Auk, vol. xxv, new series, No. 3, July 1908, p. 319, and
The Ottawa Naturalist, vol. xvii, No. 8, November 1908, p. 163.

The Sharp-shinned Hawk in Migration.

The Ontario Natural Science Bulletin, No. 1, 1908, pp. 5-7.

SETON, ERNEST THOMPSON.

Bird Records from Great Slave Lake region.

The Auk, vol. xxv, new series, No. 1, January 1908, pp. 68-71.

A list of eighty-eight species of birds observed by Mr. Seton's expedition to the Barren-grounds in 1907.

Recent Bird Records for Manitoba.

The Auk, vol. xxv, new series, No. 4, October 1908, pp. 150-171.

Mr. Seton here presents a list which includes three new species.

TAVERNER, P. A.

Two Ontario Records.

The Auk, vol. xxv, new series, No. 3, July 1908, p. 328.

An announcement is made of the occurrence of the Blue-winged Warbler, (*Helminthophila pinus*) and the Turkey Buzzard (*Cathartes aura*) at Point Pelee, Ontario.

TAVERNER, P. A., and SWALES, B. H.

The Birds of Point Pelee (continued from vol. xix, p. 153).

The Wilson Bulletin, vol. xx, June 1908, pp. 79-96.

The Birds of Point Pelee (continued from p. 96).

Idem, vol. xx, September 1908, pp. 107-129.

TETTS, H. F.

Bird Notes from Southwestern Nova Scotia.

The Ottawa Naturalist, vol. xxi, No. 12, March 1908, pp. 236-239.

MAMMALS.

FLEMING, JAMES H.

The Cotton-tail Rabbit in Ontario.

The Ottawa Naturalist, vol. xxii, No. 8, November 1908, p. 158,
with map showing distribution in Ontario.

GANONG, W. F.

Notes on the Natural History and Physiography of New Brunswick.
110—On the Occurrence of the Wolf in New Brunswick.

Bulletin of the Natural History Society of New Brunswick, No.
xxvi, vol. vi, part I, 1908, pp. 30-35.

LETSCQ, L'ABBÉ A. L.

Notes Biologiques sur le Vison.

Le Naturaliste Canadien, vol. xxxv, No. 1, January 1908, pp. 12-14.

LYON, MARCUS WARD, JR.

Remarks on the Horns and on the Systematic Position of the American
Antelope.

Proceedings of the United States National Museum, vol. xxxiv,
No. 1619, August 1908, pp. 393-402, plates xxxviii and xxxix.

NATURALISTE CANADIEN, I.E. (Editorial).

Capture d'un Morse.

Vol. xxxv, No. 4, April 1908, pp. 49-51.

Records the capture of a Walrus, in December 1907, near Petit
Mécattina in the northeastern part of the Gulf of St. Lawrence.

Les Morses dans le Golfe Saint-Laurent.

Vol. xxxv, No. 9, Septembre 1908, pp. 140-142.

NELSON, E. W.

Descriptions of two new subspecies of North American Mammals.

Proceedings of the Biological Society of Washington, vol. xx, 1908,
pp. 87-88.

A rabbit from Roab's ranch, near Hope, B.C., is recognized and
described as the type of a new subspecies under the name *Lepus*
bairdi cascadenis, the Cascade Mountain Snowshoe rabbit.

OSGOOD, WILFRED H.

Some unrecognized and misapplied names of American Mammals.

Proceedings of the Biological Society of Washington, vol. xx, 1908,
pp. 43-52.

In this paper it is pointed out that the name *Castor canadensis*
leucodontus, Gray (Ann. and Mag. Nat. Hist., ser. 4, vol. vi, p.

293, 1869) takes precedence to the one *Castor canadensis pacificus*, Rhoades (Trans. Am. Philos. Soc. n.s., vol. xiv, pp. 122-123, pl. xxi, fig. 1 and pl. xxii, fig. 1, 1908. Lake Kitcheloh, Washington) as applied to the west coast beaver, and that the specimens described by Gray were most probably all from Vancouver Island.

SAUNDERS, W. E.

Extension of the Range of *Peromyscus michiganicus*.

The Ottawa Naturalist, vol. xxii, 7-8, November 1908, p. 161

VIGNEAU, P.

Les Morses dans le Golfe Saint-Laurent.

Le Naturaliste Canadien, vol. xxxv, No. 9, September 1908, pp. 140-142.

MISCELLANEOUS.

DOMINION FISHERIES COMMISSION FOR BRITISH COLUMBIA, 1905-1907

Report and Recommendations, with Addenda and Appendices, pp. 1-111, 1908.

Contains valuable information regarding the habits of our western fishes. Also in this report will be found a list of the more important species of edible mollusca inhabiting British Columbian waters.

HARDY, MAJOR GENERAL CAMPBELL, R. A.

Reminiscences of a Nova Scotian Naturalist: Andrew Downs

Proceedings and Transactions of the Nova Scotian Institute of Science, Halifax, N.S., vol. xii, part I, August 1908, pp. xi-xxx.

MACFARLANE, R.

Notes on Mammals collected and observed in the Northern Mackenzie River District, North-West Territories of Canada, &c., pp. 151-283; and List of Birds and Eggs observed and collected in the North-West Territories of Canada between 1880 and 1891, pp. 285-470, with Appendix and Indices to Mammals and Birds:—Published as part of "Through the Mackenzie Basin," by Charles Mair, Toronto, William Briggs, 1908.

SASH, C. W.

Vertebrates of Ontario.

Department of Education, Toronto, 1908.

This publication of 251 pages, well illustrated, constitutes a Manual of the Vertebrates of Ontario, and consists of the "Fishes of Ontario" with previously issued parts on the "Batrachians and Reptiles," the "Birds" and the "Mammals" of Ontario, to which is added a glossary and index to the whole.

NATURALISTE CANADIEN, LE. (Editorial).

Stations de Biologie Maritime.

Vol. xxxv, No. 6, June 1908, pp. 81-83.

PREBLE, EDWARD A.

North American Fauna, No. 27—A Biological Investigation of the Athabasca-Mackenzie Region.

United States Department of Agriculture, Bureau of Biological Survey, October 1908, pp. 1-571, with map of the region, and numerous plates, illustrations, and maps of faunal areas in the text. This extensive and valuable report, beginning with a description of the physical geography, climatology and life zones of the Athabasca-Mackenzie district, gives an account of previous explorations and collections, and of the routes traversed by Biological Survey parties during 1901, 1903 and 1904. The last three-fourths of the report are devoted to critical notes on the Mammals, Birds, Reptiles, Batrachians, Fishes, Trees and Shrubs known to occur within the area of the region investigated. A bibliography and a full index complete the report.

PRINCE, EDWARD E.

The Biological Investigation of Canadian Waters, with special reference to the Government Biological Stations. Presidential Address, Section iv.

Transactions Royal Society of Canada, vol. 1, 3rd series, 1908, pp. 71-92.

Infant Cannibalism among Animals.

The Ottawa Naturalist, vol. xxii, No. 7, October 1908, pp. 125-129.

RITCHIE, ALEXANDER G.

The Faunal Affinities of the Prairie Region of Central North America. The American Naturalist, vol. xlii, June 1908, pp. 389-393, with map in the text.

TILMANS, HENRY.

Les Bêtes.....Que Passent.

Le Naturaliste Canadien, vol. xxxv, No. 6, Juin 1908, pp. 83-93.

WHITEAVES, J. E.

Zoological Notes for 1908.

Mammalia. (1) *Putorius rixosus*, Bangs. (2) *Synaptomys (Hicatomys) wrangeli*, Merriam. Birds. (3) *Ceratorhinna monocerata* (Pallas) Cassin.

The Ottawa Naturalist, vol. xxii, No. 9, December 1908, pp. 182-183.

The specimen of the Least Weasel (Bangs's Weasel) mentioned in this paper, was obtained by Mr. Joseph Keele, in January, 1908, at Third lake, Ross river, Yukon, and is now mounted in the museum of the Geological Survey at Ottawa. The second small mammal, which Dr. Whiteaves refers to in his notes as the Alaskan Lemming-mouse, is midway, as regards its dentition, between the field mice and the lemmings. Dr. Whiteaves's remarks have special reference to a specimen lately presented to the Survey by the Reverend J. H. Keen of Metlakatla, B.C.

Under the third heading reference is made to an egg of the Rhinoceros Auklet, from Lucy island, near Metlakatla, B.C., also presented to the Geological Survey by Mr. Keen.



