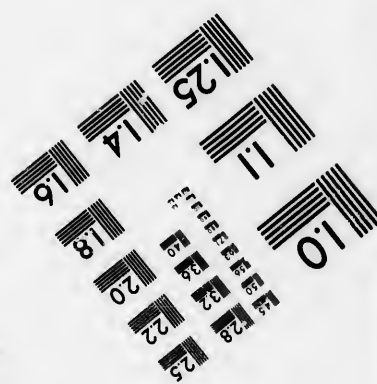
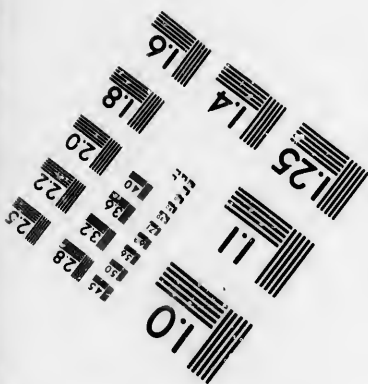
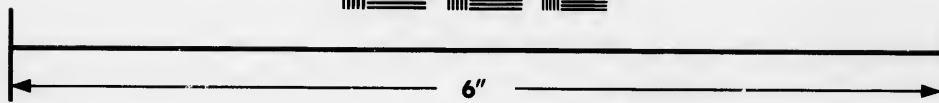
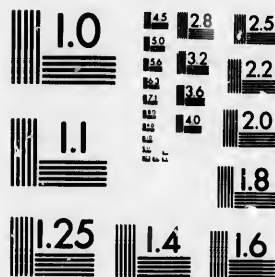


**IMAGE EVALUATION
TEST TARGET (MT-3)**



**Photographic
Sciences
Corporation**

23 WEST MAIN STREET
WEBSTER, N.Y. 14580
(716) 872-4503

**CIHM/ICMH
Microfiche
Series.**

**CIHM/ICMH
Collection de
microfiches.**



Canadian Institute for Historical Microreproductions / Institut canadien de microreproductions historiques

© 1986

Technical and Bibliographic Notes/Notes techniques et bibliographiques

The Institute has attempted to obtain the best original copy available for filming. Features of this copy which may be bibliographically unique, which may alter any of the images in the reproduction, or which may significantly change the usual method of filming, are checked below.

L'Institut a microfilmé le meilleur exemplaire qu'il lui a été possible de se procurer. Les détails de cet exemplaire qui sont peut-être uniques du point de vue bibliographique, qui peuvent modifier une image reproduite, ou qui peuvent exiger une modification dans la méthode normale de filmage sont indiqués ci-dessous.

- | | |
|--|--|
| <input type="checkbox"/> Coloured covers/
Couverture de couleur | <input type="checkbox"/> Coloured pages/
Pages de couleur |
| <input type="checkbox"/> Covers damaged/
Couverture endommagée | <input type="checkbox"/> Pages damaged/
Pages endommagées |
| <input type="checkbox"/> Covers restored and/or laminated/
Couverture restaurée et/ou pelliculée | <input type="checkbox"/> Pages restored and/or laminated/
Pages restaurées et/ou pelliculées |
| <input type="checkbox"/> Cover title missing/
Le titre de couverture manque | <input type="checkbox"/> Pages discoloured, stained or foxed/
Pages décolorées, tachetées ou piquées |
| <input type="checkbox"/> Coloured maps/
Cartes géographiques en couleur | <input type="checkbox"/> Pages detached/
Pages détachées |
| <input type="checkbox"/> Coloured ink (i.e. other than blue or black)/
Encre de couleur (i.e. autre que bleue ou noire) | <input type="checkbox"/> Showthrough/
Transparence |
| <input type="checkbox"/> Coloured plates and/or illustrations/
Planches et/ou illustrations en couleur | <input type="checkbox"/> Quality of print varies/
Qualité inégale de l'impression |
| <input type="checkbox"/> Bound with other material/
Relié avec d'autres documents | <input type="checkbox"/> Includes supplementary materiel/
Comprend du matériel supplémentaire |
| <input type="checkbox"/> Tight binding may cause shadows or distortion
along interior margin/
La reliure serrée peut causer de l'ombre ou de la
distorsion le long de la marge intérieure | <input type="checkbox"/> Only edition available/
Seule édition disponible |
| <input type="checkbox"/> Blank leaves added during restoration may
appear within the text. Whenever possible, these
have been omitted from filming/
Il se peut que certaines pages blanches ajoutées
lors d'une restauration apparaissent dans le texte,
mais, lorsque cela était possible, ces pages n'ont
pas été filmées. | <input type="checkbox"/> Pages wholly or partially obscured by errata
slips, tissues, etc., have been refilmed to
ensure the best possible image/
Les pages totalement ou partiellement
obscurcies par un feuillet d'errata, une pelure,
etc., ont été filmées à nouveau de façon à
obtenir la meilleure image possible. |

Additional comments: [Printed ephemera] 1 sheet (verso blank) This copy is a photoreproduction.
Commentaires supplémentaires:

This item is filmed at the reduction ratio checked below/
Ce document est filmé au taux de réduction indiqué ci-dessous.

10X	12X	14X	16X	18X	20X	22X	24X	26X	28X	30X	32X
								/			

The copy filmed here has been reproduced thanks to the generosity of:

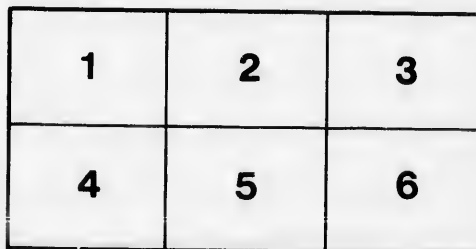
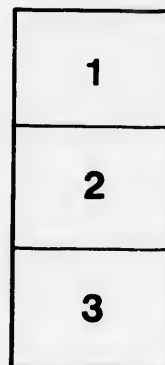
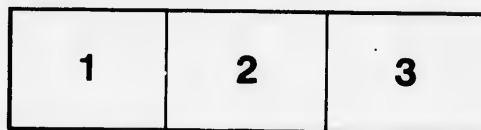
Bibliothèque nationale du Québec

The images appearing here are the best quality possible considering the condition and legibility of the original copy and in keeping with the filming contract specifications.

Original copies in printed paper covers are filmed beginning with the front cover and ending on the last page with a printed or illustrated impression, or the back cover when appropriate. All other original copies are filmed beginning on the first page with a printed or illustrated impression, and ending on the last page with a printed or illustrated impression.

The last recorded frame on each microfiche shall contain the symbol \rightarrow (meaning "CONTINUED"), or the symbol ∇ (meaning "END"), whichever applies.

Maps, plates, charts, etc., may be filmed at different reduction ratios. Those too large to be entirely included in one exposure are filmed beginning in the upper left hand corner, left to right and top to bottom, as many frames as required. The following diagrams illustrate the method:



L'exemplaire filmé fut reproduit grâce à la générosité de:

Bibliothèque nationale du Québec

Les images suivantes ont été reproduites avec le plus grand soin, compte tenu de la condition et de la netteté de l'exemplaire filmé, et en conformité avec les conditions du contrat de filmage.

Les exemplaires originaux dont la couverture en papier est imprimée sont filmés en commençant par le premier plat et en terminant soit par la dernière page qui comporte une empreinte d'impression ou d'illustration, soit par le second plat, selon le cas. Tous les autres exemplaires originaux sont filmés en commençant par la première page qui comporte une empreinte d'impression ou d'illustration et en terminant par la dernière page qui comporte une telle empreinte.

Un des symboles suivants apparaîtra sur la dernière image de chaque microfiche, selon le cas: le symbole \rightarrow signifie "A SUIVRE", le symbole ∇ signifie "FIN".

Les cartes, planches, tableaux, etc., peuvent être filmés à des taux de réduction différents. Lorsque le document est trop grand pour être reproduit en un seul cliché, il est filmé à partir de l'angle supérieur gauche, de gauche à droite, et de haut en bas, en prenant le nombre d'images nécessaire. Les diagrammes suivants illustrent la méthode.



ADJUTANT GENERAL'S OFFICE,

HEAD QUARTERS,

QUEBEC, 3rd April, 1815.

GENERAL ORDERS.

HIS Excellency the COMMANDER OF THE FORCES announces to the Army serving in British North America, that he has received the Commands of His Royal Highness the PRINCE REGENT to return to England.

In taking leave of an Army he had the honor to Command from the commencement of Hostilities with the United States to the termination of the War, His Excellency has great satisfaction in expressing his entire approbation and acknowledging the high sense he entertains of the zeal, courage and discipline that has been so eminently displayed by this portion of His Majesty's Troops.

It has fallen to the lot of this Army to struggle through an arduous and unequal Contest, remote from succour, and deprived of many advantages experienced in the more cultivated Countries of Europe; yet His Excellency has witnessed with pride and admiration, the firmness, intrepidity and patient endurance of fatigue and privations, which have marked the character of the Army of Canada. Under all these circumstances, valour and discipline have prevailed, and although local considerations and limited means have circumscribed the War principally to a defensive system, it has, notwithstanding, been ennobled, by numerous brilliant exploits, which will adorn the page of future history. At Detroit, and at the River Raisin two entire Armies with their Commanding Generals were captured, and greatly superior Armies were repulsed. The several Battles of Queenstown, Stoney Creek, Chateauguay, Chrytiller's, La Colle, Lundy's Lane, near the Falls of Niagara, and the subsequent operations on that Frontier, will ever immortalize the Heroes who were on those occasions afforded the opportunity of distinguishing themselves. The Capture of Michillmackinac, Ogdensburg, O'wego and Niagara by Assault, are trophies of the prowess of British Arms. The names of the respective Officers who led His Majesty's Troops to these several achievements are already known to the world, and will be transmitted by the faithful historian with glory to a grateful posterity.

Reviewing past events, it is with exultation His Excellency reflects on the complete success which has crowned the valour, exertions, and perseverance of this gallant Army, by terminating each successive Campaign in the complete defeat and discomfiture of all the Enemy's Plans, in which the utmost energies of the Government of the United States have been exhausted in vain efforts to accomplish his avowed object, the Conquest of these Provinces. Lieut. General SIR JOHN C. SHERBROOKE, and the Army under his immediate orders, are entitled to the highest praise for the bravery and promptness displayed in the occupation of a large District of the Enemy's Territory, and His Excellency requests the Lieut. General will accept His Thanks for the cordial assistance he has at all times afforded him.

To Lieut. General SIR GORDON DRUMMOND, on whom the Command of the Canadas devolves, His Excellency's best Thanks are due, for his unwearied exertions and support under circumstances of peculiar difficulty: To the General Officers, General Staff, and Officers and Soldiers His Excellency feels himself highly indebted, and duly appreciates their respective merits. To Major General BAYNES the Adjutant General, and Major General SIR SIDNEY BECKWITH the Quarter Master General, and to the Officers of his personal Staff, His Excellency's Thanks are also due for the judgment, alacrity and zeal evinced in the discharge of their several duties.

His Excellency has every reason to be satisfied with the conduct and exertions of the Public Departments of this Army, and he feels it an Act of Justice to express particularly his approbation of the very efficient manner in which the Commissariat has been conducted under the zealous and judicious arrangements of Commissary General ROBINSON.

His Excellency will have peculiar gratification in representing to His Royal Highness The PRINCE REGENT the Services and Talents of the Officers of this Army, to the honorable Survivors of which Lieut. General SIR GEORGE PREVOST offers the heartfelt Tribute of his warmest Thanks:

(Signed) EDWARD BAYNES, Adjutant General,

*To be translated and printed
on a separate sheet of paper. See page
See translated copies of the original*

N. A.

