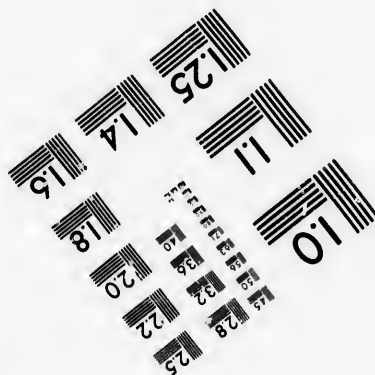
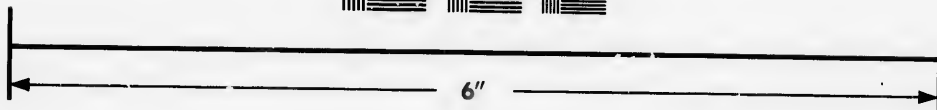
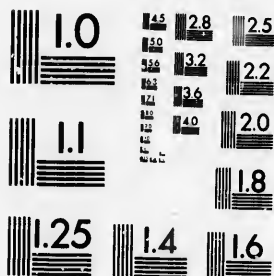


**IMAGE EVALUATION  
TEST TARGET (MT-3)**



**Photographic  
Sciences  
Corporation**

23 WEST MAIN STREET  
WEBSTER, N.Y. 14580  
(716) 872-4503

0  
15  
29  
32  
36  
40  
44  
48  
52  
56  
60  
64  
68  
72  
76  
80  
84  
88  
92  
96  
100

**CIHM/ICMH  
Microfiche  
Series.**

**CIHM/ICMH  
Collection de  
microfiches.**



Canadian Institute for Historical Microreproductions / Institut canadien de microreproductions historiques

11  
15  
19  
23  
27  
31  
35  
39  
43  
47  
51  
55  
59  
63  
67  
71  
75  
79  
83  
87  
91  
95  
99  
103

**© 1986**

Technical and Bibliographic Notes/Notes techniques et bibliographiques

The Institute has attempted to obtain the best original copy available for filming. Features of this copy which may be bibliographically unique, which may alter any of the images in the reproduction, or which may significantly change the usual method of filming, are checked below.

L'Institut a microfilmé le meilleur exemplaire qu'il lui a été possible de se procurer. Les détails de cet exemplaire qui sont peut-être uniques du point de vue bibliographique, qui peuvent modifier une image reproduite, ou qui peuvent exiger une modification dans la méthode normale de filmage sont indiqués ci-dessous.

- |  |  |
|--|--|
| <input type="checkbox"/> Coloured covers/<br>Couverture de couleur   | <input type="checkbox"/> Coloured pages/<br>Pages de couleur   |
| <input type="checkbox"/> Covers damaged/<br>Couverture endommagée  | <input type="checkbox"/> Pages damaged/<br>Pages endommagées   |
| <input type="checkbox"/> Covers restored and/or laminated/<br>Couverture restaurée et/ou pelliculée  | <input type="checkbox"/> Pages restored and/or laminated/<br>Pages restaurées et/ou pelliculées  |
| <input type="checkbox"/> Cover title missing/<br>Le titre de couverture manque   | <input checked="" type="checkbox"/> Pages discoloured, stained or foxed/<br>Pages décolorées, tachetées ou piquées   |
| <input type="checkbox"/> Coloured maps/<br>Cartes géographiques en couleur   | <input type="checkbox"/> Pages detached/<br>Pages détachées  |
| <input type="checkbox"/> Coloured ink (i.e. other than blue or black)/<br>Encre de couleur (i.e. autre que bleue ou noire)   | <input checked="" type="checkbox"/> Showthrough/<br>Transparence   |
| <input type="checkbox"/> Coloured plates and/or illustrations/<br>Planches et/ou illustrations en couleur  | <input type="checkbox"/> Quality of print varies/<br>Qualité inégale de l'impression   |
| <input type="checkbox"/> Bound with other material/<br>Relié avec d'autres documents   | <input type="checkbox"/> Includes supplementary material/<br>Comprend du matériel supplémentaire   |
| <input type="checkbox"/> Tight binding may cause shadows or distortion<br>along interior margin/<br>La reliure serrée peut causer de l'ombre ou de la<br>distorsion le long de la marge intérieure   | <input type="checkbox"/> Only edition available/<br>Seule édition disponible   |
| <input type="checkbox"/> Blank leaves added during restoration may<br>appear within the text. Whenever possible, these<br>have been omitted from filming/<br>Il se peut que certaines pages blanches ajoutées<br>lors d'une restauration apparaissent dans le texte,<br>mais, lorsque cela était possible, ces pages n'ont<br>pas été filmées. | <input type="checkbox"/> Pages wholly or partially obscured by arrata<br>slips, tissues, etc., have been refilmed to<br>ensure the best possible image/<br>Les pages totalement ou partiellement<br>obscurcies par un feuillet d'arrata, une palure,<br>etc., ont été filmées à nouveau de façon à<br>obtenir la meilleure image possible. |
| <input checked="" type="checkbox"/> Additional comments:/ [Printed ephemera] 1 sheet (verso blank)<br>Commentaires supplémentaires:  |  |

This item is filmed at the reduction ratio checked below/  
Ce document est filmé au taux de réduction indiqué ci-dessous.

10X	12X	14X	16X	18X	20X	22X	24X	26X	28X	30X	32X
						✓					

The copy filmed here has been reproduced thanks to the generosity of:

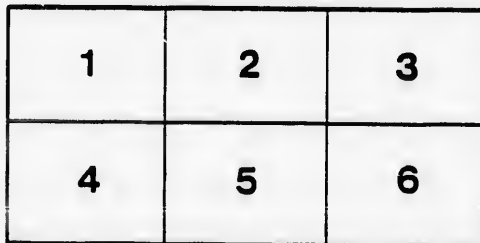
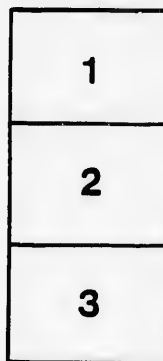
Manuscript Division  
Public Archives of Canada

The images appearing here are the best quality possible considering the condition and legibility of the original copy and in keeping with the filming contract specifications.

Original copies in printed paper covers are filmed beginning with the front cover and ending on the last page with a printed or illustrated impression, or the back cover when appropriate. All other original copies are filmed beginning on the first page with a printed or illustrated impression, and ending on the last page with a printed or illustrated impression.

The last recorded frame on each microfiche shall contain the symbol  $\rightarrow$  (meaning "CONTINUED"), or the symbol  $\nabla$  (meaning "END"), whichever applies.

Maps, plates, charts, etc., may be filmed at different reduction ratios. Those too large to be entirely included in one exposure are filmed beginning in the upper left hand corner, left to right and top to bottom, as many frames as required. The following diagrams illustrate the method:



L'exemplaire filmé fut reproduit grâce à la générosité de:

Division des manuscrits  
Archives publiques du Canada

Les images suivantes ont été reproduites avec le plus grand soin, compte tenu de la condition et de la netteté de l'exemplaire filmé, et en conformité avec les conditions du contrat de filmage.

Les exemplaires originaux dont la couverture en papier est imprimée sont filmés en commençant par le premier plat et en terminant soit par la dernière page qui comporte une empreinte d'impression ou d'illustration, soit par le second plat, selon le cas. Tous les autres exemplaires originaux sont filmés en commençant par la première page qui comporte une empreinte d'impression ou d'illustration et en terminant par la dernière page qui comporte une telle empreinte.

Un des symboles suivants apparaîtra sur la dernière image de chaque microfiche, selon le cas: le symbole  $\rightarrow$  signifie "A SUIVRE", le symbole  $\nabla$  signifie "FIN".

Les cartes, planches, tableaux, etc., peuvent être filmés à des taux de réduction différents. Lorsque le document est trop grand pour être reproduit en un seul cliché, il est filmé à partir de l'angle supérieur gauche, de gauche à droite, et de haut en bas, en prenant le nombre d'images nécessaire. Les diagrammes suivants illustrent la méthode.



# PROCLAMATION

NORTH RIDING OF THE COUNTY

# PUBLIC

IS HEREBY GIVEN

# ELECTORS OF THE OF THE COUNTY

That, in obedience to Her Majesty's Writ to me  
day of the month of MAY, in the year of our L  
sixty-three, I require the presence of the said e

# HUSTINES IN FRONT OF

At Woodstock, in the s

ON THE 24 DAY OF THE MO



3073

# AMMATION!

THE COUNTY OF OXFORD, TO WIT:

# NOTICE

BEY GIVEN TO THE

THE NORTH RIDING  
COUNTY OF OXFORD,

Writ to me directed, and bearing date the 16th  
of our Lord one thousand eight hundred and  
of the said electors at the

OF THE COURT HOUSE,

ock, in the said Riding



**ON THE 8th DAY OF THE MO**

At the hour of twelve o'clock noon, for the purpose  
them in the **LEGISLATIVE ASSEMBLY** of  
Poll be demanded and allowed in the manner by

**Poll will be**

**On the 15th day of the Month**

In the following places, viz:---In the **TOWN**  
rick's Ward, at the Town Hall in said Ward.  
of John H. Wilson on the south side of Dundas  
the Court House. In St. John's Ward, at a shop  
Buildings. In St. David's Ward, at a shop in  
Buildings. In the **TOWNSHIP OF BLA**  
Thos. McLean, on Lot 7 in the 7th Concession.  
**HEIM**, at a building of Mr. Muma's near F  
Drumbo. In the **TOWNSHIP OF EAST Z**  
pin's near Lappin's Inn, 12th Line. In the **TOW**  
of George Gordon, Lot No. 11, in the 4th Conc  
at the old Temperance Hall. In the **TOWNSHIP**  
William Murray, Kintore Post Office, 10th Lin

Of all which every person is hereby required to  
accordingly. Given under my hand at Woods  
month of May, in the year of our Lord one thou

**AND**

THE MONTH OF JUNE, 1863,

for the purpose of Electing a person to represent  
EMBLY of this Province; and that in case a  
manner by law prescribed, such

# be Opened

the Month of June, A.D. 1863,

the TOWN OF WOODSTOCK: In St. Pat-  
rid Ward. In St. Andrew's Ward, at the house  
of Dundas street. In St. George's Ward, at  
ard, at a shop in the block known as the Elgin  
at a shop in the block known as the Victoria  
OF BLANDFORD, at or near the house of  
Concession. In the TOWNSHIP OF BLEN-  
ma's near Fay & Demar's Inn, in the village of  
EAST ZORRA, at a house of James Lap-  
In the TOWNSHIP OF WEST ZORRA, at the house  
the 4th Concession. In the VILLAGE OF EMBRO,  
TOWNSHIP OF EAST NISSOURI, at the house of  
e, 10th Line.

required to take notice, and govern himself  
at Woodstock, this twenty-seventh day of the  
ord one thousand eight hundred and sixty-three.

**ANDREW ROSS,**

Returning Officer.



