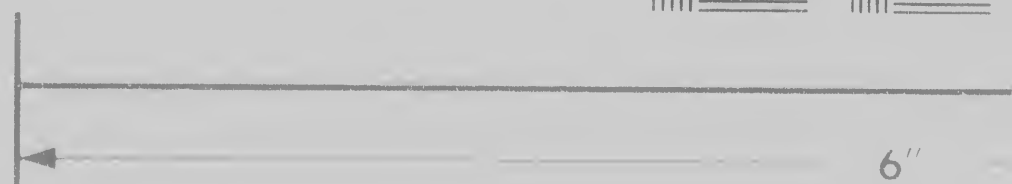
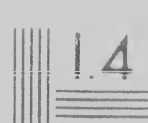
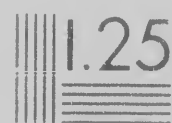
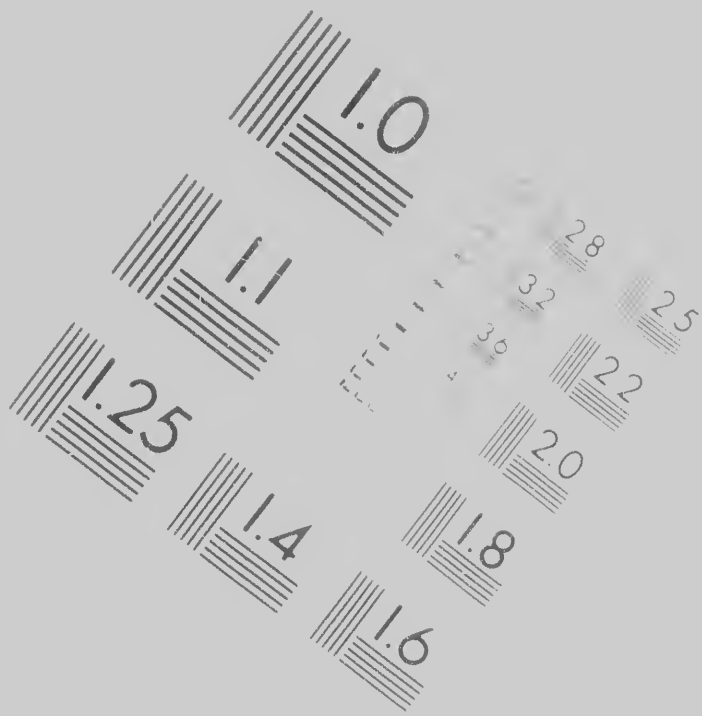


**IMAGE EVALUATION  
TEST TARGET**



GE EVALUATION  
TARGET (MT-3)



C  
M  
S

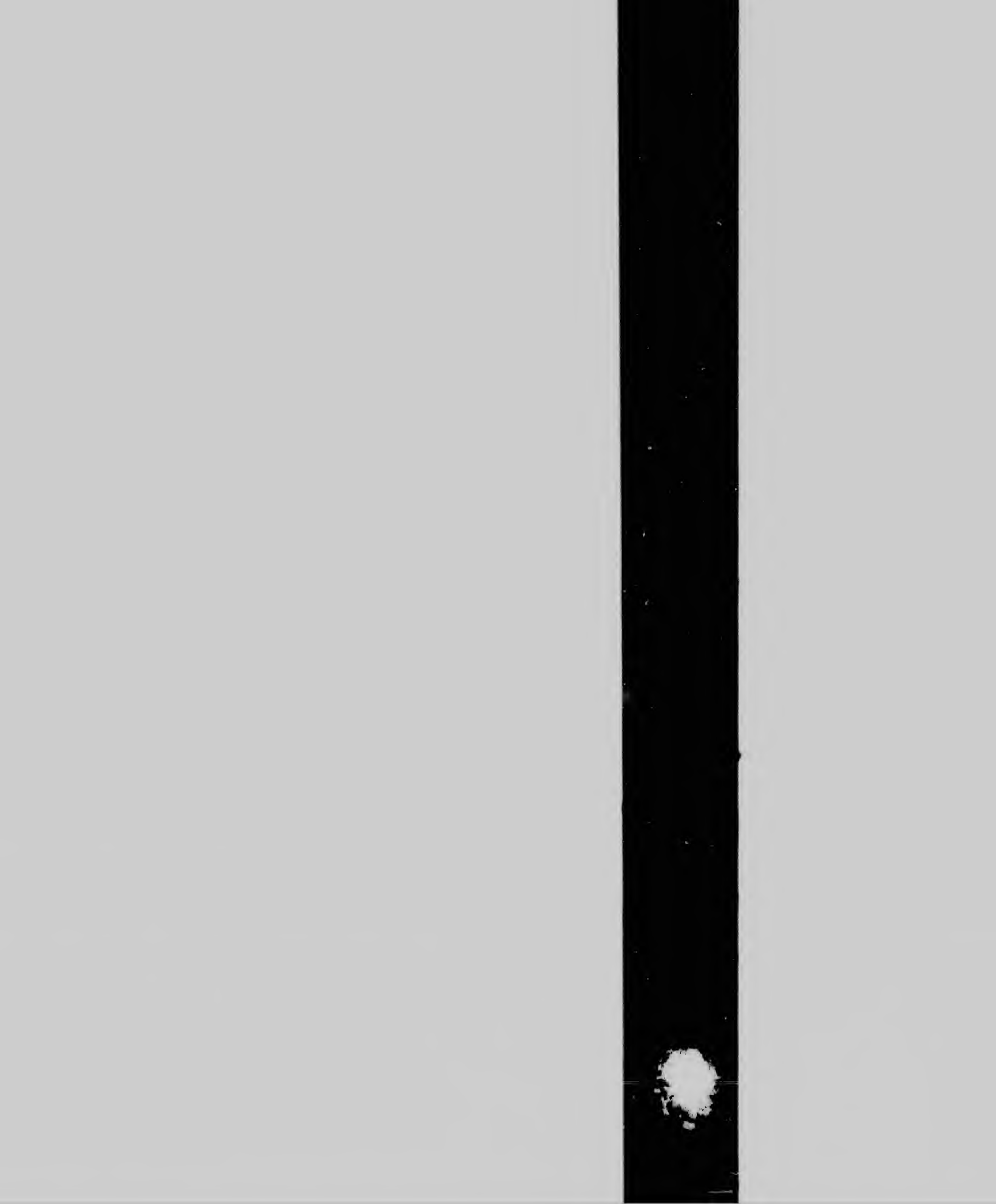


6"

**CIHM/ICMH  
Microfiche  
Series.**

**CIHM/ICMH  
Collection de  
microfiches.**





Technical and Bibliographic Notes/Notes techniques

The Institute has attempted to obtain the best original copy available for filming. Features of this copy which may be bibliographically unique, which may alter any of the images in the reproduction, or which may significantly change the usual method of filming, are checked below.

L'Institut qu'il lui a de cet ex point de une imag modificat sont indic

- |                          |   |                          |             |
|--------------------------|---|--------------------------|-------------|
| <input type="checkbox"/> | Coloured covers/<br>Couverture de couleur   | <input type="checkbox"/> | Colo<br>Pag |
| <input type="checkbox"/> | Covers damaged/<br>Couverture endommagée  | <input type="checkbox"/> | Pag<br>Pag  |
| <input type="checkbox"/> | Covers restored and/or laminated/<br>Couverture restaurée et/ou pelliculée  | <input type="checkbox"/> | Pag<br>Pag  |
| <input type="checkbox"/> | Cover title missing/<br>Le titre de couverture manque   | <input type="checkbox"/> | Pag<br>Pag  |
| <input type="checkbox"/> | Coloured maps/<br>Cartes géographiques en couleur   | <input type="checkbox"/> | Pag<br>Pag  |
| <input type="checkbox"/> | Coloured ink (i.e. other than blue or black)/<br>Encre de couleur (i.e. autre que bleue ou noire)   | <input type="checkbox"/> | Sho<br>Tran |
| <input type="checkbox"/> | Coloured plates and/or illustrations/<br>Planches et/ou illustrations en couleur  | <input type="checkbox"/> | Qua<br>Qua  |
| <input type="checkbox"/> | Bound with other material/<br>Relié avec d'autres documents   | <input type="checkbox"/> | Incl<br>Com |
| <input type="checkbox"/> | Tight binding may cause shadows or distortion<br>along interior margin/<br>La reliure serrée peut causer de l'ombre ou de la<br>distorsion le long de la marge intérieure | <input type="checkbox"/> | Only<br>Seu |
| <input type="checkbox"/> |   | <input type="checkbox"/> | Pag         |

Notes techniques et bibliographiques

L'Institut a microfilmé le meilleur exemplaire qu'il lui a été possible de se procurer. Les détails de cet exemplaire qui sont peut-être uniques du point de vue bibliographique, qui peuvent modifier une image reproduite, ou qui peuvent exiger une modification dans la méthode normale de filmage sont indiqués ci-dessous.

- Coloured pages/  
Pages de couleur
- Pages damaged/  
Pages endommagées
- Pages restored and/or laminated/  
Pages restaurées et/ou pelliculées
- Pages discoloured, stained or foxed/  
Pages décolorées, tachetées ou piquées
- Pages detached/  
Pages détachées
- Showthrough/  
Transparence
- Quality of print varies/  
Qualité inégale de l'impression
- Includes supplementary material/  
Comprend du matériel supplémentaire
- Only edition available/  
Seule édition disponible
- Pages wholly or partially obscured by errata

The copy filmed here has been made available to the generosity of:

Library of Congress  
Photoduplication Service

The images appearing here are those of the original copy and in keeping with the filming contract specifications.

Original copies in printed paper format beginning with the front cover and ending with the last page with a printed or illustrated impression, or the back cover where other original copies are filmed, are to be filmed first page with a printed or illustrated impression, and ending on the last page with a printed or illustrated impression.

Maps, plates, charts, etc., may be filmed at different reduction ratios. They are to be entirely included in one exposure, beginning in the upper left hand corner and right and top to bottom, as required. The following diagram illustrates the method:

ed here has been reproduced thanks  
sity of:

Library of Congress  
Photoduplication Service

ppearing here are the best quality  
sidering the condition and legibility  
l copy and in keeping with the  
act specifications.

es in printed paper covers are filmed  
th the front cover and ending on  
with a printed or illustrated impres-  
ack cover when appropriate. All  
copies are filmed beginning on the  
h a printed or illustrated impres-  
ing on the last page with a printed  
impression.

charts, etc., may be filmed at  
uction ratios. Those too large to be  
ded in one exposure are filmed  
the upper left hand corner, left to  
to bottom, as many frames as  
following diagrams illustrate the

L'exemplaire filmé fut reproduit grâce à la  
générosité de:

Library of Congress  
Photoduplication Service

Les images suivantes ont été reproduites avec le  
plus grand soin, compte tenu de la condition et  
de la netteté de l'exemplaire filmé, et en  
conformité avec les conditions du contrat de  
filimage.

Les exemplaires originaux dont la couverture en  
papier est imprimée sont filmés en commençant  
par le premier plat et en terminant soit par la  
dernière page qui comporte une empreinte  
d'impression ou d'illustration, soit par le second  
plat, selon le cas. Tous les autres exemplaires  
originaux sont filmés en commençant par la  
première page qui comporte une empreinte  
d'impression ou d'illustration et en terminant par  
la dernière page qui comporte une telle  
empreinte

Les cartes, planches, tableaux, etc., peuvent être  
filmés à des taux de réduction différents.  
Lorsque le document est trop grand pour être  
reproduit en un seul cliché, il est filmé à partir  
de l'angle supérieur gauche, de gauche à droite,  
et de haut en bas, en prenant le nombre  
d'images nécessaire. Les diagrammes suivants  
illustrent la méthode.

avec le  
ion et

de

ure en  
ençant  
r la  
e  
econd  
ires  
la  
e  
ant par

ent être

être  
partir  
droite,

rants






**1857.**

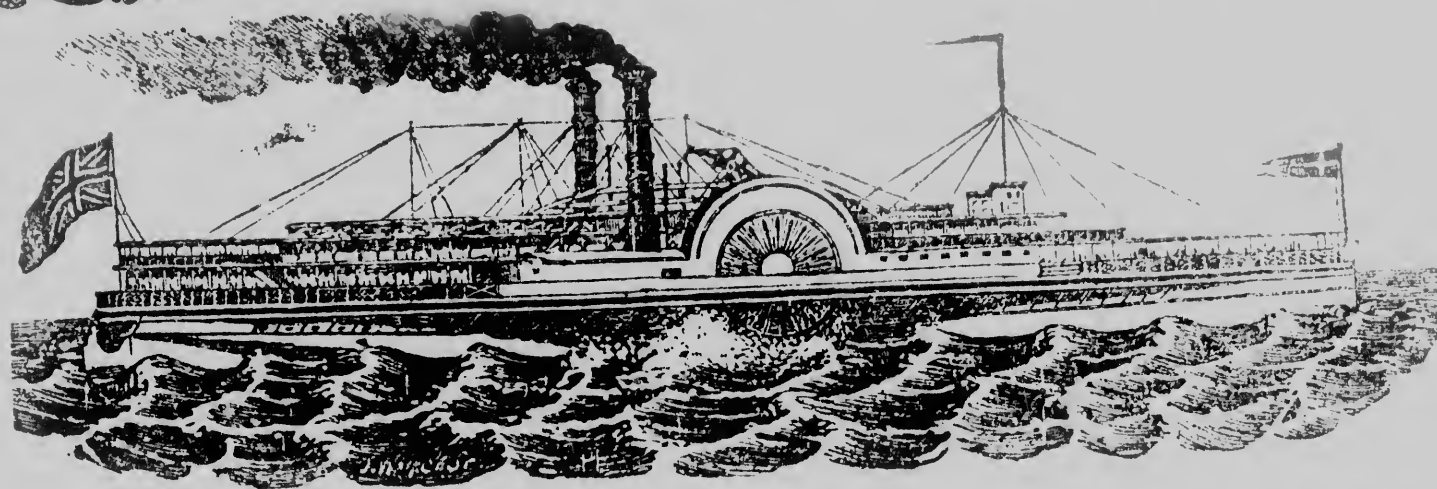
**NEW AND IMPORTANT ARRANGEMENT.**

**ROYAL MAIL**

THROUGH LINE

FOR KINGSTON, COBOURG, PORT HOPE, DARLINGTON, TORONTO  
AND HAMILTON.

 **Only Line without Transhipment!**



THE FOLLOWING

**FIRST CLASS UPPER CABIN STEAMERS**

COMPOSE THIS LINE, VIZ.:-

<b>KINGSTON, (Iron)</b>	- - -	<b>Capt. KELLEY,</b>
<b>BANSHEE,</b>	- - -	<b>HOWARD</b>
<b>PASSPORT, (Iron)</b>	- - -	<b>HARBOTTLE</b>
<b>ARABIAN,</b>	- - -	<b>MAXWELL,</b>
<b>CHAMPION,</b>	- - -	<b>SINCLAIR,</b>
<b>MAGNET, (Iron)</b>	- - -	<b>TWOHY.</b>

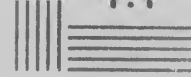
They were built expressly for LAKE and RIVER NAVIGATION - COMMODIOUS, STAUNCH and in  
CAREFUL and fitted and furnished with

S

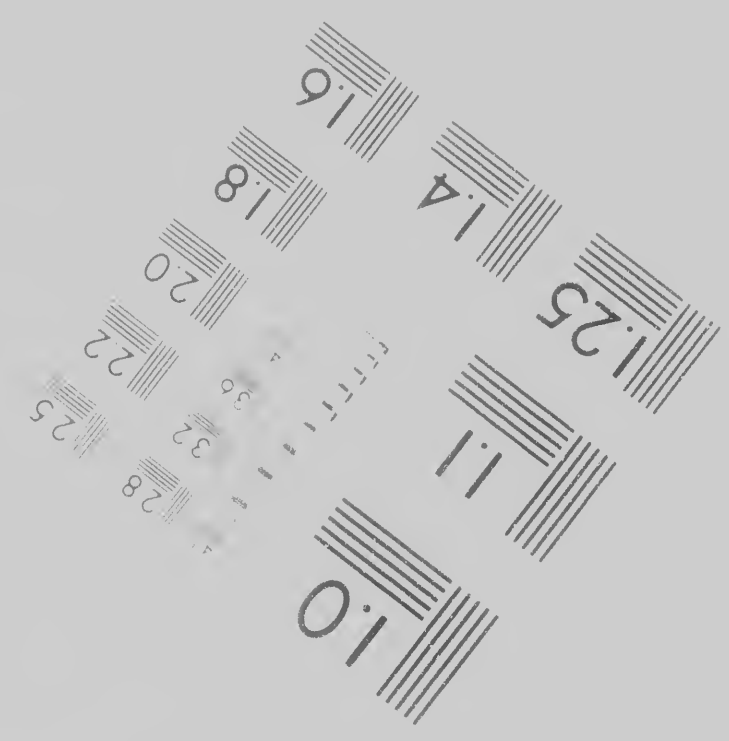
E

,

m



1.25 1.4

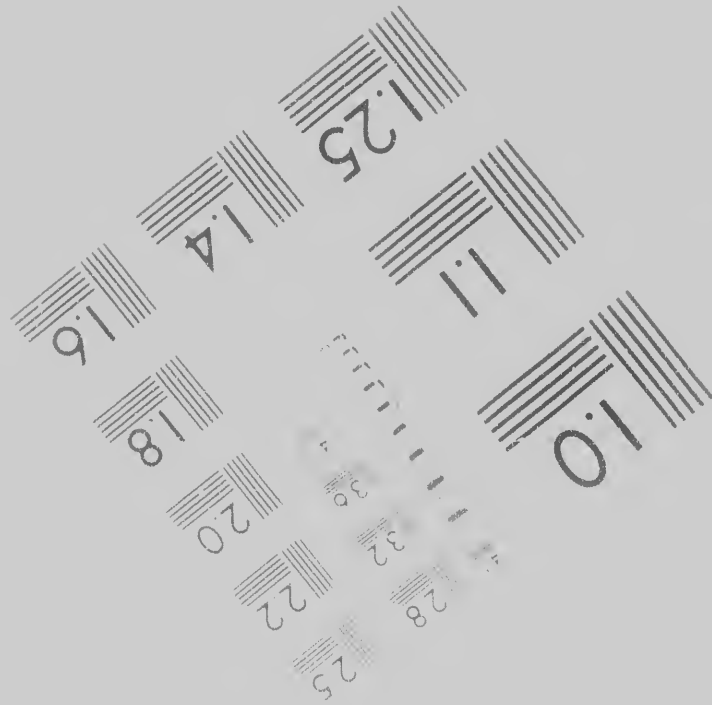


Photographic  
Sciences  
Corporation



6"

Canadian Institute



raphic  
nces  
ration

23 WEST MAIN STREET  
WEBSTER, N.Y. 14580  
716-872-4503





Canadian Institute for Historical Microreproductions / Institut canadien de microreproductions historiques

© 1986

historiques

6

Planches et/ou illustrations en couleur

Qua

Bound with other material/  
 Relié avec d'autres documents

Inclu  
Com

Tight binding may cause shadows or distortion  
along interior margin/  
La reliure serrée peut causer de l'ombre ou de la  
distorsion le long de la marge intérieure

Only  
Seul

Blank leaves added during restoration may  
appear within the text. Whenever possible, these  
have been omitted from filming/  
Il se peut que certaines pages blanches ajoutées  
lors d'une restauration apparaissent dans le texte,  
mais, lorsque cela était possible, ces pages n'ont  
pas été filmées.

Page  
slips  
ensu  
Les p  
obsc  
etc.,  
obte

Additional comments / CIHM no 60407  
 Commentaires supplémentaires

This item is filmed at the reduction ratio checked below/  
Ce document est filmé au taux de réduction indiqué ci-dessous.


10X                                      14X                                      18X                                      22X

12X                                      16X                                      20X                                      24X



Qualité inégale de l'impression

Includes supplementary material/  
Comprend du matériel supplémentaire

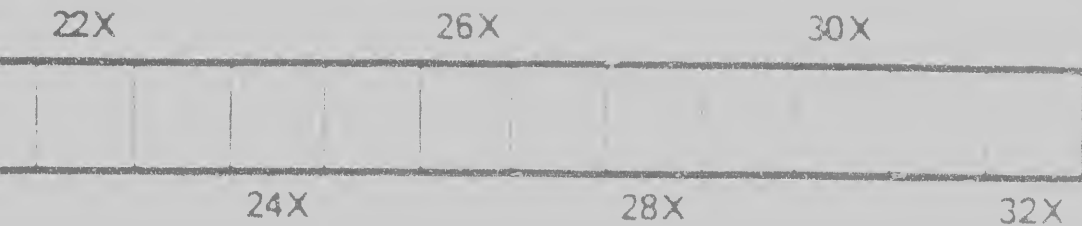
Only edition available/  
Seule édition disponible

Pages wholly or partially obscured by errata  
slips, tissues, etc., have been refilmed to  
ensure the best possible image/  
Les pages totalement ou partiellement  
obscurcies par un feuillet d'errata, une pelure  
etc., ont été filmées à nouveau de façon à  
obtenir la meilleure image possible

different reduction ratios. The  
entirely included in one expo  
beginning in the upper left h  
right and top to bottom, as  
required. The following diag  
method:

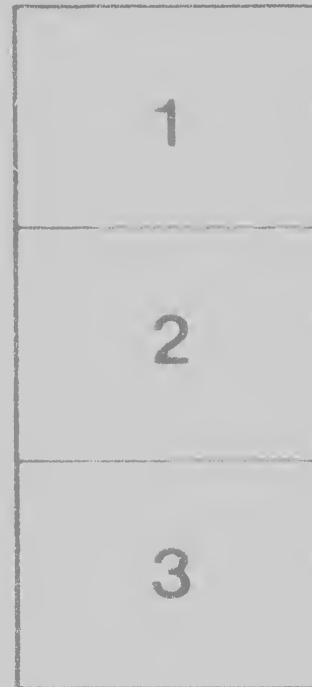


essous



ction ratios. Those too large to be  
ded in one exposure are filmed  
the upper left hand corner, left to  
to bottom, as many frames as  
following diagrams illustrate the

filmés à des taux de réduction différents.  
Lorsque le document est trop grand pour être  
reproduit en un seul cliché, il est filmé à partir  
de l'angle supérieur gauche, de gauche à droite,  
et de haut en bas, en prenant le nombre  
d'images nécessaire. Les diagrammes suivants  
illustrent la méthode.



être  
partir  
droite,

ants



**FIRST CLASS UPPER ORDER STEAMERS**

COMPOSE THIS LINE, VIZ.:-

<b>KINGSTON, (Iron)</b>	- - -	Capt. <b>KELLEY,</b>
<b>BANSHEE,</b>	- - -	" <b>HOWARD</b>
<b>PASSPORT, (Iron)</b>	- - -	" <b>HARBOTTLE</b>
<b>ARABIAN,</b>	- - -	" <b>MAXWELL,</b>
<b>CHAMPION,</b>	- - -	" <b>SINCLAIR,</b>
<b>MAGNET, (Iron)</b>	- - -	" <b>TWOHY.</b>

They were built expressly for LAKE and RIVER NAVIGATION—COMMODIOUS, STAUNCH and in every respect WELL FOUND with every requirement for SAFETY; and fitted and furnished with EVERY MODERN CONVENIENCE and COMFORT.

One of these Steamers leave the Canal Basin, Montreal, EVERY DAY (except Sundays) at 9 A.M., and LACHINE on the arrival of the NOON train from Montreal, for the above and intermediate Ports,

**DIRECT WITHOUT TRANSHIPMENT,**

CONNECTING AS FOLLOWS:--

- At Hamilton,** with the GREAT WESTERN RAILWAY for *London, Chatham, Windsor, Detroit, Chicago, Galena, St. Paul, Milwaukee, &c.*
- At Toronto,** with the NORTHERN RAILROAD for *Marquette, Green Bay and all Ports on Lake Michigan.*
- At Niagara,** with the ERIE AND ONTARIO RAILROAD for *Niagara Falls, Buffalo, Cleveland, Toledo, Columbus, Cincinnati, &c.*

**TO THE TOURIST OR PLEASURE SEEKER,**

This Line affords a most desirable conveyance—comfortable, pleasant and expeditious, passing through the delightful scenery of the Lake of THE THOUSAND ISLANDS, and all

*The Rapids of the St. Lawrence by Daylight.*

**To families moving West, the advantages are unequalled**

The Steamer running through WITHOUT TRANSHIPMENT, and DIRECT to the Railway DEPOT at TORONTO and HAMILTON, the ANNOYANCE and DAMAGE in the removal of Luggage (subject to Transshipping Lines) is ENTIRELY AVOIDED

TICKETS, or further information can be procured from C. F. MUCKLE, at the Hotels, on board of the Steamers; or at the Office, 10 McGill Street.

**ALEX. MILLOY, Agent.**

Royal Mail Through Line Office,  
40 McGill Street, Montreal.

Owler & Stevenson, Printers

E

,

in

and

Mu-

and

de

led

POF

s,

•

inter)