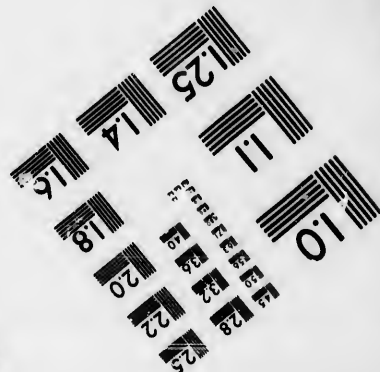
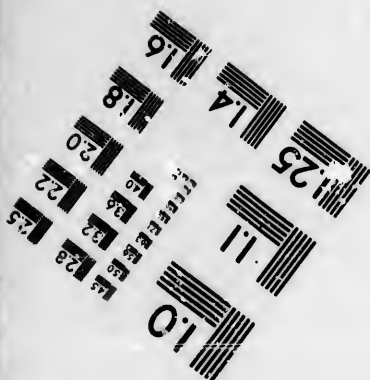
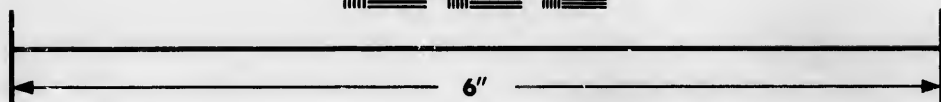
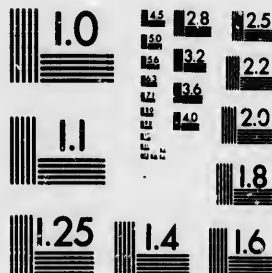


**IMAGE EVALUATION  
TEST TARGET (MT-3)**



**Photographic  
Sciences  
Corporation**

23 WEST MAIN STREET  
WEBSTER, N.Y. 14580  
(716) 872-4503

0  
11  
12  
13  
14  
15  
16  
17  
18  
19  
20  
21  
22  
23  
24  
25

**CIHM/ICMH  
Microfiche  
Series.**

**CIHM/ICMH  
Collection de  
microfiches.**



Canadian Institute for Historical Microreproductions / Institut canadien de microreproductions historiques

11  
12  
13  
14  
15  
16  
17  
18  
19  
20  
21  
22  
23  
24  
25

**© 1986**

Technical and Bibliographic Notes/Notes techniques et bibliographiques

The Institute has attempted to obtain the best original copy available for filming. Features of this copy which may be bibliographically unique, which may alter any of the images in the reproduction, or which may significantly change the usual method of filming, are checked below.

L'Institut a microfilmé le meilleur exemplaire qu'il lui a été possible de se procurer. Les détails de cet exemplaire qui sont peut-être uniques du point de vue bibliographique, qui peuvent modifier une image reproduite, ou qui peuvent exiger une modification dans la méthode normale de filmage sont indiqués ci-dessous.

- |   |   |
|---|---|
| <input type="checkbox"/> Coloured covers/<br>Couverture de couleur  | <input type="checkbox"/> Coloured pages/<br>Pages de couleur  |
| <input type="checkbox"/> Covers damaged/<br>Couverture endommagée   | <input type="checkbox"/> Pages damaged/<br>Pages endommagées  |
| <input type="checkbox"/> Covers restored and/or laminated/<br>Couverture restaurée et/ou pelliculée   | <input type="checkbox"/> Pages restored and/or laminated/<br>Pages restaurées et/ou pelliculées   |
| <input type="checkbox"/> Cover title missing/<br>Le titre de couverture manque  | <input checked="" type="checkbox"/> Pages discoloured, stained or foxed/<br>Pages décolorées, tachetées ou piquées  |
| <input type="checkbox"/> Coloured maps/<br>Cartes géographiques en couleur  | <input type="checkbox"/> Pages detached/<br>Pages détachées   |
| <input type="checkbox"/> Coloured ink (i.e. other than blue or black)/<br>Encre de couleur (i.e. autre que bleue ou noire)  | <input checked="" type="checkbox"/> Showthrough/<br>Transparence  |
| <input type="checkbox"/> Coloured plates and/or illustrations/<br>Planches et/ou illustrations en couleur   | <input type="checkbox"/> Quality of print varies/<br>Qualité inégale de l'impression  |
| <input type="checkbox"/> Bound with other material/<br>Relié avec d'autres documents  | <input type="checkbox"/> Includes supplementary material/<br>Comprend du matériel supplémentaire  |
| <input type="checkbox"/> Tight binding may cause shadows or distortion along interior margin/<br>Le reliure serrée peut causer de l'ombre ou de la distorsion le long de la marge intérieure  | <input type="checkbox"/> Only edition available/<br>Seule édition disponible  |
| <input type="checkbox"/> Blank leaves added during restoration may appear within the text. Whenever possible, these have been omitted from filming/<br>Il se peut que certaines pages blanches ajoutées lors d'une restauration apparaissent dans le texte, mais, lorsque cela était possible, ces pages n'ont pas été filmées. | <input type="checkbox"/> Pages wholly or partially obscured by errata slips, tissues, etc., have been refilmed to ensure the best possible image/<br>Les pages totalement ou partiellement obscurcies par un feuillet d'errata, une pelure, etc., ont été filmées à nouveau de façon à obtenir la meilleure image possible. |
| <input checked="" type="checkbox"/> Additional comments: /<br>Commentaires supplémentaires:   | [Printed ephemera] 1 sheet (verso blank)  |

This item is filmed at the reduction ratio checked below/  
Ce document est filmé au taux de réduction indiqué ci-dessous.

10X	14X	18X	22X	26X	30X
<input type="checkbox"/>	<input type="checkbox"/>	<input type="checkbox"/>	<input checked="" type="checkbox"/>	<input type="checkbox"/>	<input type="checkbox"/>
12X	16X	20X	24X	28X	32X

The copy filmed here has been reproduced thanks to the generosity of:

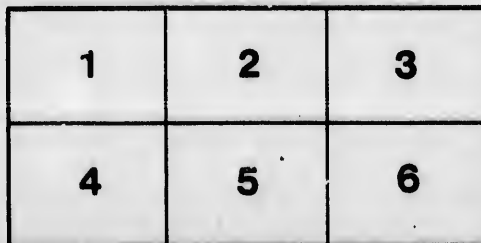
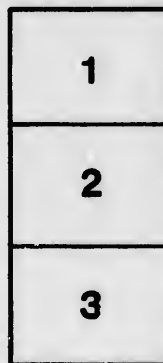
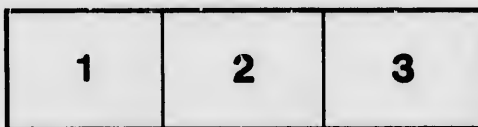
New Brunswick Museum  
Saint John

The images appearing here are the best quality possible considering the condition and legibility of the original copy and in keeping with the filming contract specifications.

Original copies in printed paper covers are filmed beginning with the front cover and ending on the last page with a printed or illustrated impression, or the back cover when appropriate. All other original copies are filmed beginning on the first page with a printed or illustrated impression, and ending on the last page with a printed or illustrated impression.

The last recorded frame on each microfiche shall contain the symbol  $\rightarrow$  (meaning "CONTINUED"), or the symbol  $\nabla$  (meaning "END"), whichever applies.

Maps, plates, charts, etc., may be filmed at different reduction ratios. Those too large to be entirely included in one exposure are filmed beginning in the upper left hand corner, left to right and top to bottom, as many frames as required. The following diagrams illustrate the method:



L'exemplaire filmé fut reproduit grâce à la générosité de:

New Brunswick Museum  
Saint John

Les images suivantes ont été reproduites avec le plus grand soin, compte tenu de la condition et de la netteté de l'exemplaire filmé, et en conformité avec les conditions du contrat de filmage.

Les exemplaires originaux dont la couverture en papier est imprimée sont filmés en commençant par le premier plat et en terminant soit par la dernière page qui comporte une empreinte d'impression ou d'illustration, soit par le second plat, selon le cas. Tous les autres exemplaires originaux sont filmés en commençant par la première page qui comporte une empreinte d'impression ou d'illustration et un terminant par la dernière page qui comporte une telle empreinte.

Un des symboles suivants apparaîtra sur la dernière image de chaque microfiche, selon le cas: le symbole  $\rightarrow$  signifie "A SUIVRE", le symbole  $\nabla$  signifie "FIN".

Les cartes, planches, tableaux, etc., peuvent être filmés à des taux de réduction différents. Lorsque le document est trop grand pour être reproduit en un seul cliché, il est filmé à partir de l'angle supérieur gauche, de gauche à droite, et de haut en bas, en prenant le nombre d'images nécessaire. Les diagrammes suivants illustrent la méthode.

erreta  
to

pelure,  
on à



32X

# The Canadian Church Missionary Association

IN CONNECTION WITH

## "The Church Missionary Society"

### REASONS FOR FORMATION

1. To afford an outlet for the sympathies and liberality of all those who are in harmony with the Evangelical principles of the Reformed Church of England, and who desire that their gifts may be applied so as best to promote those principles.
2. To act in harmony with the system adopted by the Church in England which there elicits such deep sympathy and vast contributions for the promotion of Missionary work.
3. To open the way for placing in the Mission Field, whether Domestic or Foreign, many candidates who now desire to enter upon the work in connection with the C. M. S.
4. A connection with a great Missionary Society will make it easier
  - (a) To find fields where Missionary Workers are most wanted;
  - (b) To put them in the field to the best advantage;
  - (c) To place each man and woman in that sphere of work for which each is best suited.
  - (d) To secure that those who are sent out may be placed under the supervision and control of such a Society, and in touch with numerous and experienced workers in the same field.
5. Therefore it is advisable to form an association in connection with the Church Missionary Society of England on the lines suggested below.

### Proposed Constitution

**1**

#### NAME

This Association shall be known as the "Canadian Church Missionary Association" in connection with the Church Missionary Society of England.

**2**

#### OBJECTS

- (1) To correspond with the Church Missionary Society and generally to act on its behalf in the Dominion of Canada.
- (2) To send Missionaries to the Mission Field occupied by the C. M. S., who shall be under the direction of the Committee of that Society, hereinafter called the Parent Committee.
- (3) To engage in Missionary work in such other fields, not occupied by the C. M. S., as the Providence of God may direct.

**3**

#### MEMBERSHIP

Persons willing to join an Association based upon the above principles, and formed for the above objects, are invited to become members by payment of an annual subscription.

**4**

#### GOVERNING BODY

There may be in every Diocese a Diocesan Committee composed of not more than eight members, either Clergymen or Laymen, who shall be elected annually by the members of the Association within that Diocese.

There shall be a central Executive Committee composed of two delegates from each Diocesan Committee.

The Officers of the Association shall be elected and the governing body shall be constituted by the Central Committee at its first meeting after its appointment.

The Central Executive Committee, shall with the concurrence of the C. M. S., appoint a Board of Examiners whose certification of the fitness of a candidate shall be accepted by the Parent Committee.

**5**

#### MISSIONS

In all ordinary cases, Missionaries sent forth by the Association shall be supported by the Association, which shall make all arrangements regarding outfit, passages, allowances in the Mission and at Home, and be entirely responsible for them; no pecuniary responsibility attaching to the Parent Committee, unless otherwise arranged between the Association and the Parent Committee. But if a Missionary sent out by the Association should be appointed by the Parent Committee to a recognized post for which that Committee is already responsible, the Parent Committee may, at their discretion, undertake his maintenance.

The Parent Committee shall have absolute power to disconnect any Missionary sent out by the Association. This section shall apply also to women, whether Candidates or Missionaries.

**6**

#### FUNDS

The Association shall receive contributions, either allocated by the donors, or to be applied by the Committee, to the following objects:

- (a) For the Association generally.
- (b) For the General or any Special Fund of the C. M. S.
- (c) For any special Fund or object approved of by the Committee.

