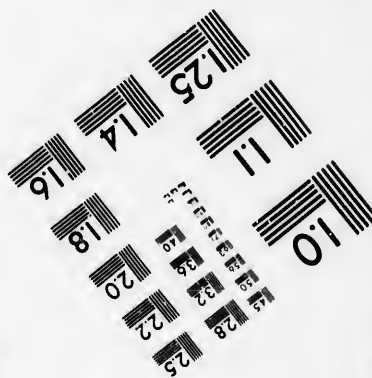
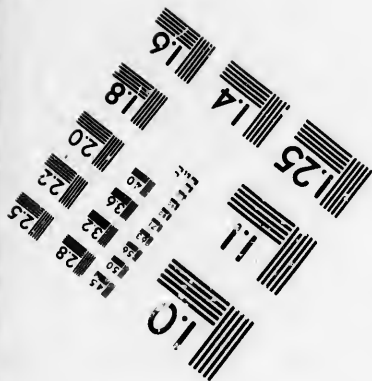
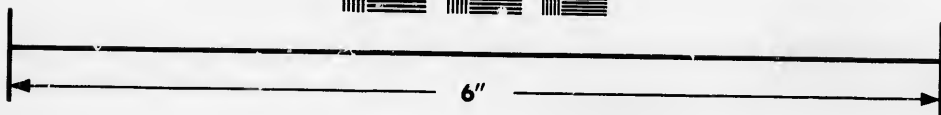
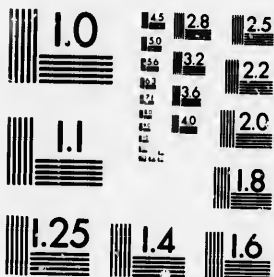


**IMAGE EVALUATION
TEST TARGET (MT-3)**



**Photographic
Sciences
Corporation**

23 WEST MAIN STREET
WEBSTER, N.Y. 14580
(716) 872-4503

**CIHM/ICMH
Microfiche
Series.**

**CIHM/ICMH
Collection de
microfiches.**



Canadian Institute for Historical Microreproductions / Institut canadien de microreproductions historiques

© 1986

Technical and Bibliographic Notes/Notes techniques et bibliographiques

The Institute has attempted to obtain the best original copy available for filming. Features of this copy which may be bibliographically unique, which may alter any of the images in the reproduction, or which may significantly change the usual method of filming, are checked below.

L'Institut a microfilmé le meilleur exemplaire qu'il lui a été possible de se procurer. Les détails de cet exemplaire qui sont peut-être uniques du point de vue bibliographique, qui peuvent modifier une image reproduite, ou qui peuvent exiger une modification dans la méthode normale de filmage sont indiqués ci-dessous.

- | | |
|--|--|
| <input type="checkbox"/> Coloured covers/
Couverture de couleur | <input type="checkbox"/> Coloured pages/
Pages de couleur |
| <input type="checkbox"/> Covers damaged/
Couverture endommagée | <input type="checkbox"/> Pages damaged/
Pages endommagées |
| <input type="checkbox"/> Covers restored and/or laminated/
Couverture restaurée et/ou pelliculée | <input checked="" type="checkbox"/> Pages restored and/or laminated/
Pages restaurées et/ou pelliculées |
| <input type="checkbox"/> Cover title missing/
Le titre de couverture manque | <input checked="" type="checkbox"/> Pages discoloured, stained or foxed/
Pages décolorées, tachetées ou piquées |
| <input type="checkbox"/> Coloured maps/
Cartes géographiques en couleur | <input type="checkbox"/> Pages detached/
Pages détachées |
| <input type="checkbox"/> Coloured ink (i.e. other than blue or black)/
Encre de couleur (i.e. autre que bleue ou noire) | <input checked="" type="checkbox"/> Showthrough/
Transparence |
| <input type="checkbox"/> Coloured plates and/or illustrations/
Planches et/ou illustrations en couleur | <input type="checkbox"/> Quality of print varies/
Qualité inégale de l'impression |
| <input type="checkbox"/> Bound with other material/
Relié avec d'autres documents | <input type="checkbox"/> Includes supplementary material/
Comprend du matériel supplémentaire |
| <input type="checkbox"/> Tight binding may cause shadows or distortion
along interior margin/
La reliure serrée peut causer de l'ombre ou de la
distorsion le long de la marge intérieure | <input type="checkbox"/> Only edition available/
Seule édition disponible |
| <input type="checkbox"/> Blank leaves added during restoration may
appear within the text. Whenever possible, these
have been omitted from filming/
Il se peut que certaines pages blanches ajoutées
lors d'une restauration apparaissent dans le texte,
mais, lorsque cela était possible, ces pages n'ont
pas été filmées. | <input type="checkbox"/> Pages wholly or partially obscured by errata
slips, tissues, etc., have been refilmed to
ensure the best possible image/
Les pages totalement ou partiellement
obscurcies par un feuillet d'errata, une pelure,
etc., ont été filmées à nouveau de façon à
obtenir la meilleure image possible. |
| <input checked="" type="checkbox"/> Additional comments:/ [Printed ephemera] 1 sheet (verso blank)
Commentaires supplémentaires: | |

This item is filmed at the reduction ratio checked below/
Ce document est filmé au taux de réduction indiqué ci-dessous.

10X	12X	14X	16X	18X	20X	22X	24X	26X	28X	30X	32X
										✓	

The copy filmed here has been reproduced thanks to the generosity of:

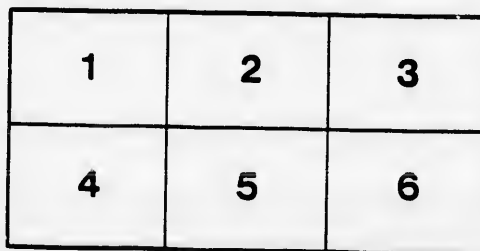
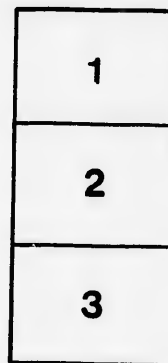
New Brunswick Museum
Saint John

The images appearing here are the best quality possible considering the condition and legibility of the original copy and in keeping with the filming contract specifications.

Original copies in printed paper covers are filmed beginning with the front cover and ending on the last page with a printed or illustrated impression, or the back cover when appropriate. All other original copies are filmed beginning on the first page with a printed or illustrated impression, and ending on the last page with a printed or illustrated impression.

The last recorded frame on each microfiche shall contain the symbol \rightarrow (meaning "CONTINUED"), or the symbol ∇ (meaning "END"), whichever applies.

Maps, plates, charts, etc., may be filmed at different reduction ratios. Those too large to be entirely included in one exposure are filmed beginning in the upper left hand corner, left to right and top to bottom, as many frames as required. The following diagrams illustrate the method:



L'exemplaire filmé fut reproduit grâce à la générosité de:

New Brunswick Museum
Saint John

Les images suivantes ont été reproduites avec le plus grand soin, compte tenu de la condition et de la netteté de l'exemplaire filmé, et en conformité avec les conditions du contrat de filmage.

Les exemplaires originaux dont la couverture en papier est imprimée sont filmés en commençant par le premier plat et en terminant soit par la dernière page qui comporte une empreinte d'impression ou d'illustration, soit par le second plat, selon le cas. Tous les autres exemplaires originaux sont filmés en commençant par la première page qui comporte une empreinte d'impression ou d'illustration et en terminant par la dernière page qui comporte une telle empreinte.

Un des symboles suivants apparaîtra sur la dernière image de chaque microfiche, selon le cas: le symbole \rightarrow signifie "A SUIVRE", le symbole ∇ signifie "FIN".

Les cartes, planches, tableaux, etc., peuvent être filmés à des taux de réduction différents. Lorsque le document est trop grand pour être reproduit en un seul cliché, il est filmé à partir de l'angle supérieur gauche, de gauche à droite, et de haut en bas, en prenant le nombre d'images nécessaire. Les diagrammes suivants illustrent la méthode.



PROGRAMME

FOR THE RECEPTION OF

H. R. H. THE PRINCE OF WALES.

1. No. I. The Sons of Temperance. No. II. The Fire Department. No. III. The Trades. No. IV. The National Societies. No. V. The Citizens, Draymen, and Carmen: The Sons of Temperance—connecting with the Volunteer Companies at the approach to Reed's Point Wharf—will line Prince William Street in the above order, extending to the Gate at the Residence of His Royal Highness.

2. The Line as formed will remain stationary, keeping its position, during the passing of His Royal Highness and Suite to his residence, and until the return of the Mayor and Corporation along the line to Reed's Point.

3. His Royal Highness will land at Reed's Point, at — o'clock, A. M., on FRIDAY, the 3d of August, under the various Salutes set forth in the *Royal Gazette*, of Wednesday 25th July instant, as follows, viz.:—Royal Salutes will be fired from Partridge Island and the Shore Batteries. His Royal Highness will be received on landing, by a Guard of Honor, furnished by the Companies of Militia which have volunteered for drill and exercise—the remainder of which Companies will line the approach to the Wharf, connecting as pointed out in No. 1.

4. At the Wharf and within the above formed lines, for the purpose of receiving His Royal Highness, will be His Excellency the Lieutenant Governor and Suite; The Mayor, Recorder, Common Council, City Clerk and Deputy Clerk; Field Officers of the Militia in uniform; The Judges of the Supreme Court; Members of the Executive Council; The President and Members of the Legislative Council; The Speaker and Members of the House of Assembly; Foreign Consuls, in uniform; The Mayors of other Cities, visiting Saint John; The High Sheriff and Coroner; The Stipendiary Magistrate and Magistrates; Heads of Civil Departments; and Office Bearers of the National Societies joining the Procession.

5. On the reception of His Royal Highness by His Excellency the Lieutenant Governor, the Procession of Escort will form as follows:—

The Mayor and Corporation.

The Town Major.

Field Officers of Militia in uniform.

His Excellency the Lieutenant Governor's Aid-de-Camps—Lt. Col. Drury and Lt. Col. Hayne (mounted).

The Officer Commanding Her Majesty's Troops in New Brunswick.

[1st Carriage.]

The Duke of Newcastle.

His Royal Highness the Prince of Wales.

His Excellency the Lieut. Governor.

[2d Carriage.]

His Royal Highness' Equerries: The Earl of St. Germain, and Major General Bruce.

[3d "]

The remainder of His Royal Highness' Suite.

The Chief Justice, Judges and Members of the Executive Council.

The President and Members of the Legislative Council.

The Speaker and Members of the House of Assembly.

The Mayors of other Cities.

High Sheriff and Coroner.

Stipendiary and other Magistrates.

Heads of Civil Departments.

And Office Bearers of the National Societies.

6. On His Royal Highness entering the grounds of His Residence, the National Anthem will be sung by the Sunday School Children.

7. On His Royal Highness entering his Residence, and at the close of the National Anthem, the Procession of Escort, headed by the Mayor and Corporation, will return to Reed's Point.

GENERAL PROCESSION.

8. The Procession will then move on in their relative positions, preceded by the Mayor and Corporation, along St. James' Street to Charlotte Street. The Mayor and Corporation &c., will then leave the Procession, and proceed to the Court House, for the purpose of receiving His Royal Highness.

9. After the departure of the Mayor and Corporation, the Procession will proceed down Charlotte Street to Main Street; up Main to Carmarthen Street; along Carmarthen to St. James' Street; along St. James' to Germain Street; thence up Germain to King Street.

10. The Procession will then await the passing of His Royal Highness up King Street, and round the south side of King's Square—passing the Court House, and saluting His Royal Highness; thence to Union Street, along Union Street to Charlotte Street; and thence to their respective quarters.

A Levee will be held at the Court House during the afternoon, of which full particulars will be given. Illuminations on the Squares in the Evening.

General Illumination from 9 till 11 o'clock in the evening.

