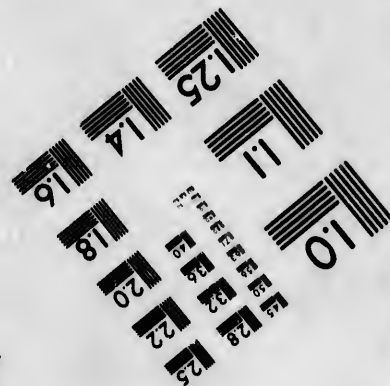
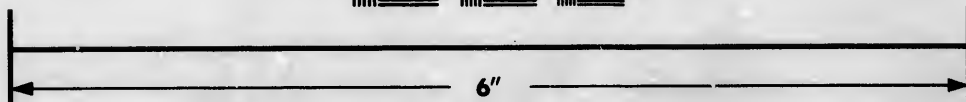
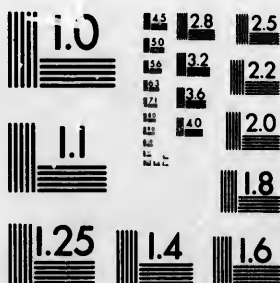


**IMAGE EVALUATION  
TEST TARGET (MT-3)**



**Photographic  
Sciences  
Corporation**

23 WEST MAIN STREET  
WEBSTER, N.Y. 14580  
(716) 872-4503

**CIHM/ICMH  
Microfiche  
Series.**

**CIHM/ICMH  
Collection de  
microfiches.**



**Canadian Institute for Historical Microreproductions / Institut canadien de microreproductions historiques**

**© 1981**

Technical and Bibliographic Notes/Notes techniques et bibliographiques

The Institute has attempted to obtain the best original copy available for filming. Features of this copy which may be bibliographically unique, which may alter any of the images in the reproduction, or which may significantly change the usual method of filming, are checked below.

L'institut a microfilmé le meilleur exemplaire qu'il lui a été possible de se procurer. Les détails de cet exemplaire qui sont peut-être uniques du point de vue bibliographique, qui peuvent modifier une image reproduite, ou qui peuvent exiger une modification dans la méthode normale de filmage sont indiqués ci-dessous.

- Coloured covers/  
Couverture de couleur
- Covers damaged/  
Couverture endommagée
- Covers restored and/or laminated/  
Couverture restaurée et/ou pelliculée
- Cover title missing/  
Le titre de couverture manque
- Coloured maps/  
Cartes géographiques en couleur
- Coloured ink (i.e. other than blue or black)/  
Encre de couleur (i.e. autre que bleue ou noire)
- Coloured plates and/or illustrations/  
Planches et/ou illustrations en couleur
- Bound with other material/  
Relié avec d'autres documents
- Tight binding may cause shadows or distortion  
along interior margin/  
La reliure serrée peut causer de l'ombre ou de la  
distortion le long de la marge intérieure
- Blank leaves added during restoration may  
appear within the text. Whenever possible, these  
have been omitted from filming/  
Il se peut que certaines pages blanches ajoutées  
lors d'une restauration apparaissent dans le texte,  
mais, lorsque cela était possible, ces pages n'ont  
pas été filmées.
- Additional comments:/  
Commentaires supplémentaires:

- Coloured pages/  
Pages de couleur
- Pages damaged/  
Pages endommagées
- Pages restored and/or laminated/  
Pages restaurées et/ou pelliculées
- Pages discoloured, stained or foxed/  
Pages décolorées, tachetées ou piquées
- Pages detached/  
Pages détachées
- Showthrough/  
Transparence
- Quality of print varies/  
Qualité inégale de l'impression
- Includes supplementary material/  
Comprend du matériel supplémentaire
- Only edition available/  
Seule édition disponible
- Pages wholly or partially obscured by errata  
slips, tissues, etc., have been refilmed to  
ensure the best possible image/  
Les pages totalement ou partiellement  
obscurcies par un feuillet d'errata, une pelure,  
etc., ont été filmées à nouveau de façon à  
obtenir la meilleure image possible.

This item is filmed at the reduction ratio checked below/  
Ce document est filmé au taux de réduction indiqué ci-dessous.

10X	14X	18X	22X	26X	30X
<input type="checkbox"/>	<input type="checkbox"/>	<input type="checkbox"/>	<input checked="" type="checkbox"/>	<input type="checkbox"/>	<input type="checkbox"/>
12X	16X	20X	24X	28X	32X

The copy filmed here has been reproduced thanks to the generosity of:

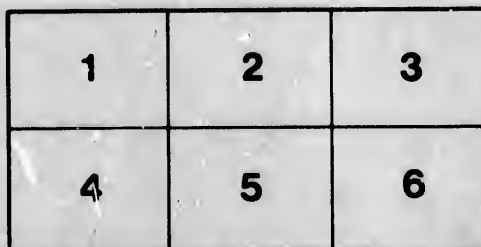
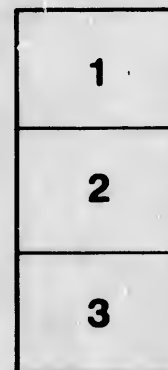
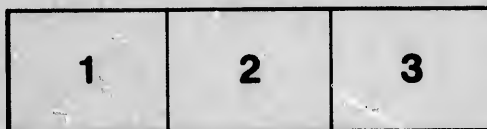
Library Division  
Provincial Archives of British Columbia

The images appearing here are the best quality possible considering the condition and legibility of the original copy and in keeping with the filming contract specifications.

Original copies in printed paper covers are filmed beginning with the front cover and ending on the last page with a printed or illustrated impression, or the back cover when appropriate. All other original copies are filmed beginning on the first page with a printed or illustrated impression, and ending on the last page with a printed or illustrated impression.

The last recorded frame on each microfiche shall contain the symbol  $\rightarrow$  (meaning "CONTINUED"), or the symbol  $\nabla$  (meaning "END"), whichever applies.

Maps, plates, charts, etc., may be filmed at different reduction ratios. Those too large to be entirely included in one exposure are filmed beginning in the upper left hand corner, left to right and top to bottom, as many frames as required. The following diagrams illustrate the method:



L'exemplaire filmé fut reproduit grâce à la générosité de:

Library Division  
Provincial Archives of British Columbia

Les images suivantes ont été reproduites avec le plus grand soin, compte tenu de la condition et de la netteté de l'exemplaire filmé, et en conformité avec les conditions du contrat de filmage.

Les exemplaires originaux dont la couverture en papier est imprimée sont filmés en commençant par le premier plat et en terminant soit par la dernière page qui comporte une empreinte d'impression ou d'illustration, soit par le second plat, selon le cas. Tous les autres exemplaires originaux sont filmés en commençant par la première page qui comporte une empreinte d'impression ou d'illustration et en terminant par la dernière page qui comporte une telle empreinte.

Un des symboles suivants apparaîtra sur la dernière image de chaque microfiche, selon le cas: le symbole  $\rightarrow$  signifie "A SUIVRE", le symbole  $\nabla$  signifie "FIN".

Les cartes, planches, tableaux, etc., peuvent être filmés à des taux de réduction différents. Lorsque le document est trop grand pour être reproduit en un seul cliché, il est filmé à partir de l'angle supérieur gauche, de gauche à droite, et de haut en bas, en prenant le nombre d'images nécessaire. Les diagrammes suivants illustrent la méthode.

rata  
o

pelure,  
à

32X

NWp  
971.31  
J73c

1879-80.

**CATALOGUE**

—OF—

**Fruit and Ornamental  
TREES,**

**HARDY HERBACEOUS PLANTS,  
BULBS, ROSES, ETC.**

FOR SALE, BY

**P. T. JOHNSTON & CO.,**

(Successors to Mitchell & Johnston,)

**Nurserymen, Seedsmen and Florists.**

---

**NURSEBY—Cadboro Bay Road.**

**SEED STORE—Occidental Buildings, Fort Street, Victoria,  
British Columbia.**

---

VICTORIA, B. C.

McMILLAN & SON, BOOK AND JOB PRINTERS.

1879.



1879-80.

—♦—  
**CATALOGUE**

—OF—

Fruit and Ornamental  
**TREES,**

HARDY HERBACEOUS PLANTS,

**BULBS, ROSES, ETC.**

FOR SALE BY

**P. T. JOHNSTON & CO.,**

(Successors to Mitchell & Johnston,)

**Nurserymen, Seedsmen and Florists.**

---

---

**NURSEBY—Cadbōro Bay Road.**  
**SEED STORE—Occidental Buildings, Fort Street, Victoria,**  
**British Columbia.**

---

---

VICTORIA, B. C.

McMILLAN & SON, BOOK AND JOB PRINTERS.

1879.



In publishing the present Catalogue, we thank our numerous Patrons for their very liberal and increasing support, and beg to assure them that all further commands entrusted to us shall receive our best and promptest attention. We desire to call purchasers' attention to our extensive stock of FRUIT TREES, which are in the finest condition possible. The larger sizes of our trees have been transplanted, so that they are in a state for removal, and will grow on any land that is at all suitable for an orchard. We have a very fine stock of ORNAMENTAL TREES, such as POPLAR, LOCUST, ELM, ASH, LABURNUM and MAPLE.

Our EVERGREEN TREES and SHRUBS are also in excellent condition, the collection consists of such kinds as have proved to be perfectly hardy here, viz: WELLINGTONIA, YEW, BOX, JUNIPER, CRYPTOMERIA, THUJA, the beautiful LAWSONS CYPRESS, and the far-famed CUPRESSUS FUNEBRIS, the finest evergreen yet known. Having a large collection of PLANTS in pots, we are in a position to supply out flowers, and to make bouquets at almost any season of the year.

P. T. JOHNSTON & CO.

VICTORIA, B. C., October, 1879.

Ea  
Re  
Sw

L

Ea  
Fal  
Fal  
Glo  
Gra  
Por

F

Bar  
Beu  
Dix  
Doy  
Fle  
Gol  
Lou  
Mac

Bra  
Coe  
Dra  
Gre  
Imp  
Imp

Bell  
Blac  
Blac  
Big  
Carr  
Elto

Blac  
Con  
Crev

Blac  
Com

But



# CATALOGUE.

## APPLES.

<b>Early Varieties.</b>	Summer Hagloe, Summer Queen, Twenty Ounce, Waxen, Westfield's Seek-no-far- ther.	Esopus Spitzenberg, King of Tompkins County Monmouth Pippin, Northern Spy, Ortley, Reinette de Canada, Rhode Island Greening, Foxbury Russet, Swaar, White Winter Permain, Wine Sap, Yellow Bellflower, Yellow Newtown Pippin.
<b>Late Summer and Fall Varieties.</b>	<b>Early &amp; Late Win- ter Varieties.</b>	
Early Pennock, Fall Beauty, Fall Pippin, Gloria Mundi, Gravenstein, Porter,	Baldwin, Baxter's Permain, Blue Permain, Blenheim Orange, Dutch Mignonne,	

## PEARS.

<b>Early Varieties.</b>	Passe Colmar, Seckel, Tyson, Vicar of Winkfield.	Beurre Gris d'Hiver, Beurre Rance, Chaumontel, Glout Morceau, Pound, Y Nelis.
Bartlett, Beurre Clairgeau, Dix, Doyenne, Flemish Beauty, Golden Beurre, Louis Bonne de Jersey, Madeline,	<b>Early &amp; Late Win- ter Varieties.</b>	
	Beurre Diel, Beurre Easter,	

## PLUMS.

Bradshaw, Coe's Golden Drop, Drap d'Or, Green Gage, Imperial Gage, Imperial Ottoman,	Italian Prune, Jaune Hative, Jefferson, Peach, Purple Gage,	Red Magnum Bonum, Reine Claude de Bavay, Schuyler Gage, Washington, Y Egg.
---	---	--

## CHERRIES.

Belle de Choisy, Black Eagle, Black Tartarian, Bigarreau Napoleon, Carnation, Elton,	Governor Wood, Kentish, Knight's Early Black, Late Duke, Lewelling,	May Duke, Red Oxheart, Reine Hortense, Rockport, White Heart.
---	---	---

## GRAPE VINES.

Black Prince, Concord, Creveling,	Delaware, Hartford, Iona,	Isabella, Royal Muscadine, White Tokay.
---	---------------------------------	---

## CURRANTS.

Black Naples. Common Red,	Red Cherry. (small), Victoria,	White Dutch.
------------------------------	-----------------------------------	--------------

Archives  
of  
British Columbia  
LIBRARY  
SECTION

# PRICE LIST OF FRUIT TREES.



## APPLES.

	EACH.	PER 100
2 years old.....	25 Cts.	\$20 00
3 years old.....	37½ "	25 00
4 years old.....	50 "	40 00

N. B.—Those buying 25 will be charged at the 100 rate.

## PEARS.

	EACH.	PER 10
2 years old.....	50 Cts.	\$ 4 00
3 years old.....	75 "	6 00
4 years old.....	1 00 "	8 00

## PLUMS.

	EACH.	PER 10
2 years old.....	50 Cts.	\$ 4 00
3 years old.....	75 "	6 00
4 years old.....	1 00 "	8 00
Extra size.....	1 50	

## CHERRIES.

	EACH.	PER 10
2 years old.....	50 Cts.	\$ 4 00
3 years old.....	75 "	6 00
4 years old.....	1 25	10 00
Extra size.....	1 50	

## PEACHES.—Early and Late Varieties.

	EACH.
2 years old.....	\$1 00
3 years old.....	1 50

## NECTARINES.—In Variety.

Size and Prices similar to Peaches.

## APRICOTS.—Moorpark and Blenheim.

	EACH.
2 years old.....	\$1 00
3 years old.....	1 50
Trained for walls, large.....	2 50

The above prices are for first-class trees. A liberal discount to dealers.

ties  
Str

Che

Asp  
Blac  
Blac  
Eng  
Mec  
Ras  
Ras  
Rhu  
Sibe  
Seal  
Quin

Baln  
Bush  
Burr  
Fenn  
Fenn  
Horn  
Hys  
Lave  
Lenn  
Pot  
Rose  
Rue  
Sage  
Tans  
Thyr  
Wint  
Wor

## GRAPE VINES.

50 Cents to \$1 50

## CURRANTS.

\$3 00 per dozen

## GOOSEBERRIES.

Champion, Houghton's Seedling, Downing's Seedling. The above varieties are under good cultivation, quite "mildew proof."  
 Strong bushes..... each 25 cents; per dozen, \$3 00

## STRAWBERRIES.

British Queen, Jucunda, Triomphe de Gand, Golden Queen, Colonel Chesney, Monmouth Seedling, Kentucky and Wilson's Albany,  
 Per 100, \$1 50 to \$2 50

## MISCELLANEOUS.

Asparagus Roots..... \$2 00 per 100  
 Blackberries, Kittatinny, hardy and vigorous, each..... 25 cents  
 Blackberries, Lawton..... 12½ cents each. \$7 50 per 100  
 English Filbert, large trees..... \$2 50  
 Medlar, large trees..... \$1 50  
 Raspberries, Common Red..... \$3 00 per 100  
 Raspberries, Brinkle's Orange, large orange yellow, each..... 25 cents  
 Rhubarb Roots, Linnæus, early large kind..... \$1 50 to \$2 50 per dozen  
 Siberian Crab..... 50 to 75 cents each  
 Seakale Plants..... 12½ cents each. \$7 50 per 100  
 Quince..... 50 to 75 cents each

## HERBS.

	EACH.
Balm .....	25
Bush Basil .....	25
Burnet .....	25
Fennel .....	25
Fenugreek .....	25
Horse Radish, per dozen .....	25 to 50
Hyssop .....	2 00
Lavender .....	25
Lemon Thyme .....	25 to 50
Pot Marjoram .....	25
Rosemary .....	25
Rue .....	25 to 50
Sage .....	25 to 50
Tansy .....	25
Thyme .....	25 to 50
Winter Savcry .....	25
Wormwood .....	25

## DECIDUOUS ORNAMENTAL TREES AND SHRUBS.

	EACH.
Acer Macrophyllum (Native Maple).....	25, 50, 75
Acer Negundo, Fraxinifolium (Ash-leaved maple) ..	25 to 50
Amygdalus Communis (Almond), large size.....	\$1 50
"    "    "    double pink.....	2 50
"    "    "    white.....	2 50
Æsculus Hippocastanus (Horse Chestnut) ..	1 00 to 2 00
Ailanthus Glandulosus (Tree of Heaven).....	25, 50, 75
Amorpha Fruticosa, a hardy shrub with purple flowers. . . . .	50
Calycanthus Ovatus, (American Allspice) .....	75 to 1 00
Catalpa, very ornamental shrub .....	50 to 1 00
Carya Alba (Hickory).....	50 to 1 00
Castanea Vesca (Spanish Chestnut), strong.....	1 00 to 2 00
Celtis Tourneforti, (Nettle Tree) .....	50
Crataegus Coccineus Flore Pleno (double flowering thorn).....	50 to 1 00
Crataegus Oxyacanthus (The Hawthorn), large trees.....	50 to 1 00
"    "    for hedges, per 100, transplanted, large..	5 00 to 7 50
Cytisus Laburnum (Common Laburnum).....	50 to 1 00
Cytisus, in variety, ornamental shrubs.....	50
Deutzia Crenata Candidissima Plena (double Deutzia).....	50 to 1 00
"    Gracilis..... } The Deutzias are white, freeblooming }	50 to 1 00
"    Scabra, fine } hardy Shrubs. }	50 to 1 00
Fagus Sylvatica (Common Beech).....	50
Ficus Carica (Fig tree) .....	50 to 1 00
Fraxinus Excelsior (Common Ash), tall trees.....	75 to 1 00
Fraxinus Excelsior Pendula (Weeping Ash) .....	1 00 to 1 50
Gleditschia Triacantha (Honey Locust), transplanted.....	50 to 1 50
Gymnocladus Canadensis, (Kentucky Coffee Tree), a fine tree with rough bark and feathery foliage, small plants.....	50
Hydrangea Hortensis, large pink clusters of flowers.....	50 to 1 00
Juglans Cinerea, (Butternut).....	50
"    Nigra (Black Walnut).....	50
"    Regia (English Walnut).....	50 to 2 00
Leycesteria Formosa, autumn blossoming shrubs.....	50 to 1 00
Ligustrum Vulgare (Privet), per 100, \$10 to \$20.....	25
Liriodendron Tulipifera (the Tulip tree), very ornamental.....	1 00
Magnolia Acuminata.....	50
Magnolia Tripetala.....	50
Myrica Cerifera (Candleberry Myrtle) .....	25 to 50
Populus Argentea (Silver Poplar), tall, transplanted, large....	50 to 1 00
Populus Fastigiata (Lombardy Poplar), tall, transplanted.....	25 to 1 50
Punica, Pomegranate, double scarlet.....	2 50
"    "    "    white.....	2 50
Pyrus Aucuparia (Mountain Ash).....	50 to 1 50
Pyrus Japonica, blossoms in winter, scarlet flowers.....	75 to 1 50
Paliurus Aculeatus (Christ's Thorn), small.....	50
Philadelphus Coronarius (Mock Orange), strong .....	25 to 50
Ribes Sanguineum, red flowering currant.....	25 to 50
Robinia Pseud-acacia, (Locust), transplanted .....	50 to 1 00
"    "    "    extra size.....	2 00
"    Tortuosa.....	50
Roses, Standard, best European varieties, per dozen \$9 00....	1 00
"    Dwarf, good collection, per dozen, \$5 00 to \$7 50 . . .	50 to 75

## DECIDUOUS ORNAMENTAL TREES AND SHRUBS.—Continued.

EACH.		EACH.
	Rhamnus Catharticus, (Buckthorn) . . . . .	25
75	Sambucus Nigra Variegata, a variety of the Elder tree with variegated leaves . . . . .	50 to 75
50	Sambucus Nigra, (the Elder) . . . . .	50
1 50	Styrax Officinale, white flowered shrub . . . . .	50
2 50	Symphoricarpus Racemosus (the Snowberry) . . . . .	25 to 50
2 00	Syringa Vulgaris (Lilac), large . . . . .	1 00 to 1 50
75	"    Alba (White Lilac) . . . . .	1 00 to 1 50
50	"    Persica (Persian Lilac) . . . . .	1 00 to 1 50
1 00	Tilia Europæa, (Lime tree or Linden of Europe), small plants . . . . .	50
1 00	Ulmus Americana (American Elm), transplanted, large . . . . .	50 to 1 50
1 00	"    Campestris, (English Elm) . . . . .	50 to 75
2 00	"    Suberosa (Corkbark Elm) . . . . .	1 00 to 1 50
50	Viturnum Opulus (the Guelder Rose) . . . . .	25, 50 to 1 00
1 00	Weigelia Rosea, a hardy shrub which yields a profusion of white and pink colored flowers in early spring . . . . .	50, to 1 00 and 1 50

## HARDY EVERGREEN TREES AND SHRUBS.

EACH.		EACH.
1 00	Buxus Arborescens (Box Tree), transplanted . . . . .	50 to 1 50
1 00	"    "    Variegata . . . . .	1 00 to 1 50
1 00	Cedrus Deodara, we have a limited stock of this valuable and perhaps most beautiful of all evergreen trees . . . . .	2 50 to 3 00
50	Cistus, in variety; handsome evergreen shrubs . . . . .	50
1 00	Cupressus Lawsoniana . . . . .	50, 1 00 to 3 50
1 00	"    Macrocarpa (California Cypress) . . . . .	50 to 75
1 50	"    Sempervirens Pyramidalis, an upright growing cypress of very close and compact growth . . . . .	50 to 1 50
1 50	"    Funeris; this is one of the most graceful as well as the most beautiful evergreens in cultivation . . . . .	2 50
2 00	Cryptomeria Japonica, very elegant . . . . .	1 50, 2 50 to 7 50
1 00	"    Elegans, a very ornamental low evergreen tree of a brownish green color . . . . .	1 50
25	Cotoneaster Microphylla, suitable for poor soil . . . . .	50 to 1 00
1 00	Crataegus Pyracantha, (Pyracantha Thorn) scarlet berries, 50, . . . . .	1 00 to 1 50
50	Eleagnus Japonica Aurea Variegata, very showy evergreen shrub, with large distinctly variegated leaves . . . . .	50 to 1 50
50	Erica Mediterranea, a hardy heath . . . . .	50 to 1 50
50	Escallonia Macrantha, red flower, very ornamental . . . . .	50 to 1 50
1 00	Euonymus Radicans . . . . .	1 00
1 50	"    "    Variegata, two sorts, silver and gold . . . . .	50 to 1 50
2 50	Ilex Aquifolia (English Holly), small . . . . .	50
2 50	Juniperus Bermudiana (Pencil Cedar), strong . . . . .	1 50
1 50	"    "    (Native Species), strong, transplanted . . . . .	75 to 1 50
1 50	"    "    Hibernica (Irish Juniper), small plants . . . . .	50 to 1 00
50	"    "    Suecica (Swedish Juniper), small plants . . . . .	50 to 1 00
50	Laurus Tinus . . . . .	50 to 1 50
1 00	Libocedrus Decurrens (California Cedar), large . . . . .	2 00 to 3 50
2 00	Maclura Aurantiaca, (Csaqe Orange) . . . . .	50
50	Prunus Lauro-cerasus (Common Laurel, Cherry Laurel, &c.) 50, . . . . .	1 00 to 2 00
1 00	Rhododendron (Native Species) . . . . .	75 to 1 50
75	Tamarix Parviflora, light, airy habit with green foliage . . . . .	50 to 1 50

### HARDY EVERGREEN TREES AND SHRUBS.—Continued.

	EACH.	
<i>Taxus Baccata</i> (English Yew), transplanted.....	1 50,	2 00 to 3 00
" <i>Hibernica</i> (Irish Yew).....		75 to 1 00
<i>Thuja Orientalis</i> , (Chinese Arborvitæ).....		75 to 1 50
" <i>Aurea</i> , a low evergreen shrub, forming a compact head of a golden color.....		1 00 to 1 50
<i>Wellingtonia Gigantea</i> , 3 to 10 feet high, (these are perfect pyramids, suitable where immediate effect is required).....	1 00,	2 50 to 5 00
<i>Yucca Gloriosa</i> , large plants.....		1 50
" <i>Aloefolia</i> , small plants.....		50

(The Yuccas are evergreen drooping-leaved plants, suitable for vases on balconies, laws, steps, &c.)

### HARDY CLIMBING PLANTS.

	EACH.	
<i>Ampelopsis Hederacea</i> (Virginia Creeper).....	\$ 50 to	75
<i>Bignonia Grandiflora</i> , red flowers.....	50 to	75
<i>Clematis Jackmanni</i> , large blue flowers.....	50 to	1 50
" <i>Fortunei</i> , large double white flowers.....	1 00 to	1 50
Climbing Roses, best varieties.....	75 to	1 00
<i>Fuchsia</i> , hardy climbing.....	50 to	75
Hop Vines.....	per hundred \$3 to \$5,	25
<i>Hedera Helix</i> (Common Ivy).....		50
" <i>Variegata</i> (Variegated Ivy), several varieties.....		1 00
<i>Jasminum Nudiflorum</i> , winter blooming.....	50 to,	75
" <i>Officinale</i> (white Jasmine).....		75
<i>Kerria Japonica</i> , flowers yellow, free-blooming.....	50 to	75
<i>Lonicera Flexuosa</i> (Honeysuckle).....	25 to	50
" (Scarlet Trumpet " ).....		50
" (Yellow " " ).....		50
" <i>Brachypoda Aurea Reticulata</i> (the Japanese variegated Honeysuckle).....	50 to	75
<i>Passiflora Cœrulea</i> (Passion Flower), hardy.....	50 to	1 00
<i>Periploca Græca</i> , very beautiful foliage.....	50 to	1 00
<i>Pyrus Japonica</i> , scarlet flowers, winter blooming.....	75 to	1 50
<i>Vinca Elegantissima Variegata</i> (Periwinkle), very pretty.....	50 to	1 00
<i>Wistaria Sinensis</i> , large clusters of light blue flowers.....	1 00 to	1 50
<i>Wistaria Magnifica</i> , flowers in dense drooping racemes of a pale lilac color, with very graceful foliage.....		1 50

### HERBACEOUS PLANTS.

	PER DOZ.	EACH.
<i>Achillea Ptarmica</i> (Sneezewort), very showy perennial, with white flowers, useful for cutting.....		25
<i>Aubrietia Purpurea</i> , for spring decoration, with violet blue flowers.....		25
<i>Armeria Dianthoides</i> , very good for edging.....		25
<i>Antirrhinum</i> (Tom Thumb), dwarf, very fine.....	1 00	12½
<i>Arabis Albida</i> , yields a profusion of white flowers in the spring and early summer months.....		25
<i>Campanula Media</i> (Canterbury Bells).....	2 00	25
" <i>Carpatica</i> , grows in dry soil and blooms all summer.....		25

## HERBACEOUS PLANTS.—Continued.

CH.		PER DOZ.	EACH.
3 00	Carnations and Pinks, in variety .....	2 50	25
1 00	Cineraria Maritima, white foliage, fine for beds.....		25
1 50	Chrysanthemums, new varieties.....	5 00	50
	"    older varieties.....	4 00	37½
1 50	Centaurea Candidissima, a very beautiful hardy plant with silvery white leaves.....		25
5 00	Colchicum Autumnale, (autumn crocus) a very beautiful plant; ought to be in every garden.....		25
1 50	Cerastium Biebersteini, an edging plant with silvery-white leaves, very dwarf.....		25
50	Campanula Pyramidalis, bold spikes of pure white bell- shaped flowers.....		25
ES on	Convallaria Majalis (Lily of the Valley).....	4 00	37½
	Crinum Capense (a hardy Amaryllid) flowers of a creamy white color, strong flowering plants.....		50
CH.	Cypripedium Album, Venus or Lady's Slipper, a remark- ably handsome Orchid, a native of this Province...		50
75	Dictamnus Fraxinella, an old favorite, known by some un- der the name of Fraxinella .....		50
1 50	Delphinium Nudicaule, a scarlet Larkspur; the flowers are of a rich orange scarlet, and have a dazzling effect; the leaves are a dark green .....		50
1 00	Delphinium Formosum, bold spikes of blue flowers.....		50
75	Dielytra Spectabilis, beautiful spring blooming.....		50 to 75
75	Dianthus Barbatus (Sweet William) imported strain.....	2 00	25
75	Dwarf Iris, blue.....	2 00	25
50	Hedysarum Coronarium, a highly ornamental plant, pro- ducing numerous spikes of fine bright red flowers .....		25
50	Hedysarum Coronarium Album, white flowers striped with crimson .....		25
75	Hesperis Tristis (Night Smelling Rocket) .....		25
00	"    Matronalis (Sweet Rocket).....		25
00	Hollyhocks, new varieties.....	5 00	50
50	"    older varieties .....	4 00	37½
00	Iberis, Sempervirens, perennial candy tuft.....		25
50	Lilium Lancifolium Album (Japanese Lily).....	4 00	37½
	"    "    Rubrum .....	4 00	37½
	"    Martagon (Martagon Lily), Scarlet.....	4 00	37½
	"    Martagon (Martagon Lily), Yellow.....	4 00	37½
CH.	"    Tigrinum (Tiger Lily).....	4 00	37½
	"    Bulbiferum (Orange Lily).....	4 00	37½
	"    Candidum (White Lily).....	4 00	37½
25	Lychnis Haageana, scarlet flowers.....		50
25	"    Chalcedonica, bright scarlet flowers, large truss..		50
25	Lythrum Roseum Superbum.....		25
2½	Lupinus Polyphyllus, blue spring blooming.....		25
25	Myosotis Palustris Semperflorens, an improved variety of Forget-me not, very fine.....		25
25	Oxalis Floribunda, edging plant, red leaves with yellow flowers .....		25
25			



## HERBACEOUS PLANTS.—Continued.

	PER DOZ.	EACH.
Oxalis Valdiviana, blooms throughout the whole summer, bright yellow flowers, .....		25
Penstemon, a garden variety of Penstemon, with large red and white bell-shaped flowers; the foliage is dark green; a very handsome plant.....		50
Pancreatium Illyricum, a bulbous-rooted plant bearing large fragrant pure white flowers.....		50
Primula Acaulis (English Primrose) Pink.....		25
"    "    "    Yellow.....		25
Penstemons, Digitalis and Torreyanus.....		25
Pyrethrum Parthenium Aureum (Golden Feather).....	1 00	12½
Polyanthus, fine laced, in great variety.....	2 50	25
Pansies, from the finest English strain.....	2 00	25
Potentilla, yellow flowers.....		25
Stachys Lanata, silvery-white foliage, fine for bordering..		25
Salvia Argentea, silvery-white foliage, very effective.....		50
Southern Wood, Old Man, &c.....		25
Spirœa Japonica, one of the most beautiful plants in cultivation; it bears large panicles of pure white flowers,		50 to 75
Spergula Piliifera, a dense border grass three inches high, covered with white flowers, per clump.....		25
Sempervivum Calcaratum, (House Leek); good for edging		25
Salvia Patens, a hardy blue-flowering salvia.....		50
Scabious, in variety.....	1 00	12½
Silene Acaulis, pink flowers.....		25
Stock Brompton, or Winter Flowering, large plants.....	2 00	
"    "    "    small plants.....	50	
Thymus Citriodorus Aurea Variiegata, (variegated lemon thyme); useful for edging.....	2 00	25
Tritoma Uvaria, fine flower spikes, blossoms in autumn..		75
Violets, blue and white.....	2 00	25
Variegated Grass, for edging.....		25
"    "    "    by the 100, price on application.		
Verbena Venosa, a perfectly hardy verbena, with purple flowers.....		25
Wallflowers, in variety, strong plants.....	2 00	25

## GLADIOLUS.

These are hardy perennial bulbous-rooted plants, yielding a profusion of very beautiful flowers throughout the summer months.

	PER DOZ.	EACH.
Common Varieties.....	2 00	25
Choice French Hybrids, named sorts.....	4 00	37½

## PERENNIAL PHLOXES.

The Perennial Phloxes are quite hardy, producing a profusion of bloom during summer and autumn. The heads of blossoms are of immense size, and all shades of color. Price, 50 cents each, except where quoted; per dozen, \$5, our selection.

	PER DOZ.	EACH.
Eight choice, named sorts.....	5 00	50

## DAHLIAS.

Long and extensive experience has enabled us to select from European Nurseries the very best varieties in cultivation. They are of dwarf, compact growth; the flowers are of the most perfect globular forms, and quite double, varying from pure white to pink, rose, scarlet, crimson, purple, black, yellow, and all the intermediate shades of color. Price, 37½ cents each; per doz., \$4.

## STANDARD ROSES.

Of a large selection of Roses, we can supply Standards of the following varieties, which have proved to do best as such. They are in healthy condition, and have strong stems three to five feet high. Per dozen, \$9; each, \$1.

AUGUSTE MIE, a very beautiful Rose, which, under good cultivation, is able to resist the mildew entirely; the color is clear pink.

AIME VIBERT, pure white, large clusters of flowers, very free-blooming.

BLANCHEFLUR, pure white, a strong grower.

EDWARD MORREN, glossy pink, very large and full, a good rose.

EUGENE APPERT, a dark, brilliant crimson color, surpassing Geart de Batailles.

EMPEREUR DE MAROC, a velvety dark crimson color, very fine indeed.

GLOIRE DE DIJON, Tea Rose, dark apricot color.

HARRISONII, like Persian Yellow, but forms a large weeping head.

JOHN HOPPER, light rose, very large flower.

LORD RAGLAN, dark crimson, an excellent rose.

MADAME BOLL, blush, a strong grower and a large rose flower.

MADAME RIVERS, color a delicate blush, well formed and fine.

Moss, pink and white. The moss roses are very beautiful when in bud, and ought to be in every garden.

MADAME VODOT, a delicate blush color; this is a very pretty rose, of fine form.

PERSIAN YELLOW, sweet scented foliage, a good old rose.

PRINCESS MATHILDA, very dark crimson.

SIR WALTER SCOTT, rose colored, a strong grower, superb.

## DUTCH BULBS, IMPORTED DIRECT FROM HOLLAND.

	PER DOZ.	EACH.
Anemones, double, in 10 choice named sorts. . . . .	1 50	25
“ “ mixed. . . . .	1 00	12½
Crocus, in 10 varieties, named sorts. . . . .	37½ to 50	
Hyacinths, choice named, double and single, large for glasses or potting. . . . .	4 00	37½
Hyacinths, choice named, double and single, smaller for bedding. . . . .	3 00	25
Hyacinths, distinct colors, double and single. . . . .	2 00	25
Iris, (English), choice named sorts. . . . .	1 50	
Jonquils . . . . .	1 00	
Narcissus, double white. . . . .	1 50	25
“ Polyanthus. . . . .	1 50	25
“ other kinds . . . . .	1 00 to 1 50	
Ranunculus, Persian, mixed. . . . .	75	
“ Turban . . . . .	75	
Snowdrops, double . . . . .	75	
“ single. . . . .	50	

## DUTCH BULBS, &amp;c.—Continued.

	PER DOZ.	EACH.
Tulips, choice named sorts, double and single.....	1 50	
“ “ “ “ late show.....	2 00	
“ Parrot, mixed.....	1 00	
“ double and single, mixed.....	1 00	12½

BEDDING PLANTS IN SPRING, such as Zonale Geraniums, Double Petunias, Verbenas, Shrubby Calceolaris, Heliotropes, etc., per doz., \$2 00.

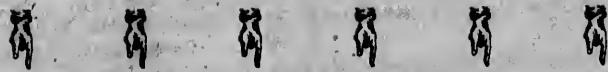
Orders strictly attended to.

Trees and shrubs taken up and packed with the greatest care; can be sent quite safely to any part of the Province.

Bouquets, Wreaths, and any Floral designs made in the most elegant style and at the shortest notice. Cut flowers supplied.

Gardens and Pleasure Grounds laid out; plans and specifications prepared, and trees and shrubs supplied at reasonable rates.





## NEW FORAGE PLANT.

---

### PRICKLY COMFREY

YIELDS FROM 80 TO 100 TONS TO THE ACRE CUT GREEN, AND IS ESPECIALLY ADAPTED FOR THE FEEDING AND FATTENING OF STOCK, AND FOR INCREASING THE MILK OF COWS.

BEING A DEEPLY-ROOTED PLANT, IT IS INDEPENDENT OF WEATHER AND CLIMATE, AND AFFORDS HEAVY CUTTINGS IN THE DRIEST AND HOTTEST WEATHER.

**Price per 100 Strong Sets, - - \$6.00**

*READY IN FEBRUARY.*



