

HAVE YOU A "D. A."?
A deposit account is one of the great conveniences in ordering goods by mail. Apply for particulars at the "D. A." Office on the Fourth Floor.

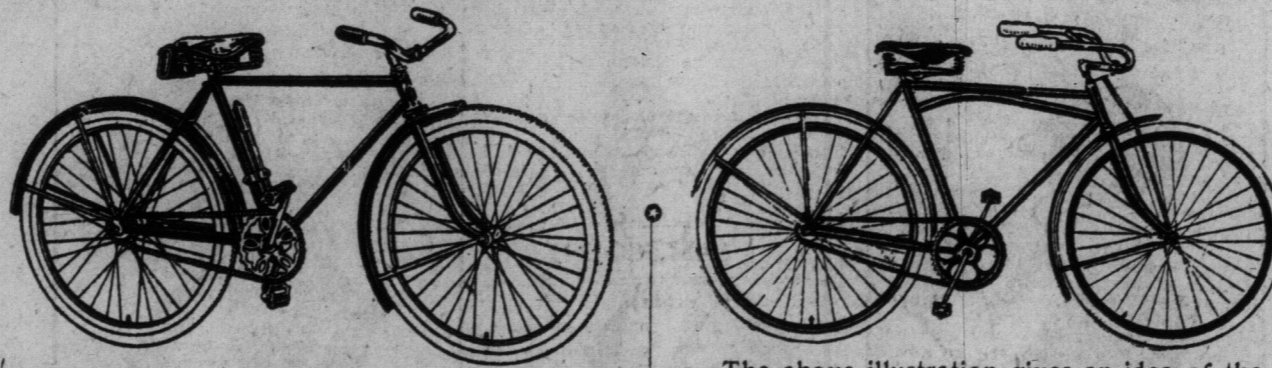
EATON'S DAILY STORE NEWS

At Yonge, Queen and James Street Doors are boxes where orders or instructions may be placed. These boxes are emptied every hour until 1 p.m., and twice in the afternoon.

1869—GOLDEN JUBILEE—1919

If You Intend Getting a New Bicycle See the 1919 Models in the Eaton Display, Fifth Floor

One of the best values in the display is the Speedwell model as illustrated below. It is strongly made with a rigid frame, studded tires, leather grip handles, Hercules brake, roller chain. It is enameled in dark maroon with a black stripe. Exceptional value at \$21.00.



Things You'll Need to Put the Bicycle or Car in Shape for Spring

As usual, the Eaton prices are extremely moderate on both bicycle and auto accessories, and the display on the Fifth Floor includes everything that is up-to-date.

The above illustration gives an idea of the modern design and equipment of this bicycle. It is known as the truss frame bicycle. Note the motorcycle style handle bars with leather grips, the reinforced front fork, the steel mud guard supports, the rubber pedals and the strong springy saddle. Included with this model are Traction Tread Tires, repair kit, tool bag, pump and Eadie brake. Price \$50.00.

HANDLE GRIPS
Leather Stitched Motorcycle Type Grips, 50c pair.

CARBIDE
Solution for lighting your headlamp. Per tin, 20c.

HANDLE BARS
Extension Handle Raiserless Grips. \$1.45 pair.

SPOKE WRENCH
This wrench keeps the spokes tight and assists the wheel to run true. 15c each.

FRONT WHEEL HUBS
Keep your wheel running free and smooth with a new front hub. 85c each.

TOOL BOX
Steel Tool Box with key size. 22 in. long. 22 x 9 x 7. Each \$2.75.

REPAIR OUTFITS
Bicycle repair outfit complete. 15c.

LOCKS
Bicycle locks and chain. 2 keys. Each 25c.

GRAPHITE
An excellent lubricant for the chain. In stick form, 5c.

CHAIN ADJUSTER
For tightening or loosening the chain. Each 15c.

BICYCLE WRENCH
A neat, compact wrench, suitable for kit. 25c each.

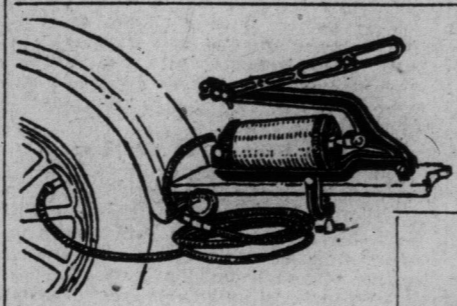
KELLEY HANDLE BARS
Movable bars, without grips, \$2.25.

BICYCLE SPROCKET LOCK
With 2 keys. Each 50c.

TIRE LEVER
Tire Lever and Cone Wrench, 10c.

Black Bicycle Enamel and Brush. Complete 25c.

TIRE CHAINS
30 x 3/2 \$5.50
33 x 4 \$6.90
34 x 4 \$7.25
35 x 4 1/2 \$8.40



RUNNING BOARD PUMP
A strong serviceable and handy attachment. Each \$6.50.

ROAD KING
Guaranteed 2,500 Miles
17.50
Only Size 28 1/2
Made for
T. EATON CO.
by Leading
Canadian
Tire Factory



BICYCLE CARRIER AND STAND.
A strong carrier very useful. Complete \$1.00.

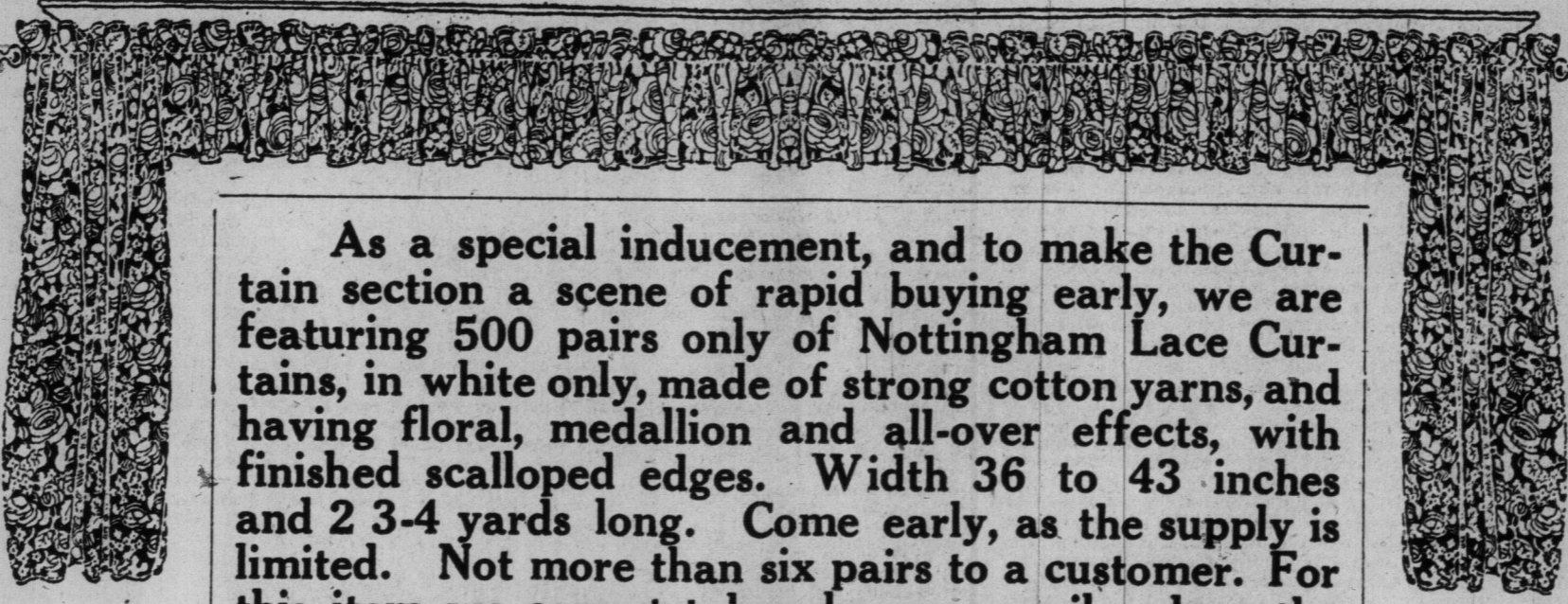
The Great Annual Special Selling of Curtains Commences Today With Eight Extra Specials in Nottingham Laces

Nottingham Lace Curtains, 38 to 43 inches wide by 2 3/4 yards long, in white only. Of strong serviceable weave. The borders show a pleasing, well covered design with medallion centres. Finished with a durable overlock scalloped edge. Special, pair \$1.23.

Fine Nottingham Lace Curtains, 43 to 60 inches wide by 2 3/4 yards long. In white, ivory or ecru shades. Durable scalloped edge with neatly designed conventional borders, attractive centre patterns. Woven on a strong background. Special, per pair \$2.65.

Nottingham Lace Curtains, 50 inches wide by 2 3/4 yards long, in white only. Showing neat floral design borders on a durable and serviceable foundation, has strongly scalloped edge and makes a good all round curtain. Special, pair \$1.85.

Fine Nottingham Lace Curtains, 43 to 52 inches wide by 2 3/4 yards long. Showing some of the most artistic effects ever secured at the price. Colors white, ivory or ecru, made of fine even quality cotton yarn. Scalloped edge with overlock stitch. Special, per pair \$3.85.



As a special inducement, and to make the Curtain section a scene of rapid buying early, we are featuring 500 pairs only of Nottingham Lace Curtains, in white only, made of strong cotton yarns, and having floral, medallion and all-over effects, with finished scalloped edges. Width 36 to 43 inches and 2 3-4 yards long. Come early, as the supply is limited. Not more than six pairs to a customer. For this item we cannot take phone or mail orders, the quantity being limited. Extra special, pair, 88c.

Of Special Interest Also Are the Following Seven Items. On Account of the Value Being Extraordinary, Each is Described Very Briefly. The Prices in Themselves Tell the Story.

Handsome Lace Curtains, suitable for dining-room or living-room. Showing conventional border with flower spray effect, the centres are well covered, some having a neat block or check design. Can be had in white, ivory, or ecru. 35 to 52 inches wide by 2 3/4 yards long. Special, per pair \$2.15.

Handsome Fish Net Curtains, 44 to 52 inches wide by 2 3/4 and 3 yards long, in white, ivory or ecru. Showing lacy well covered border designs, with corresponding centre patterns on a firmly woven double net foundation, some having double borders. Curtains which give excellent wear and sure to prove satisfactory. Special, per pair \$4.45.

Fine Nottingham Lace and Scrim Curtains, in white, ivory or ecru. The Nottingham curtains show handsome insertion border effect, with scroll or medallion centre, 50 inches wide by 2 3/4 yards long. The Scrim Curtains are 36 inches wide by 2 1/2 yards long, fine quality mercerized materials, trimmed cluny lace insertion, with edges to match. Others have hemstitched edges, with medallion corners. Extra special value, per pair \$5.35.

STORE OPENS DAILY AT 8.30 A.M. AND CLOSES AT 5 P.M.
CLOSING SATURDAYS AT 1 P.M.
Goods Bought Saturday Morning Will Be Delivered Monday

THE T. EATON CO LIMITED

—Fourth Floor

The Toronto World

FOUNDED 1880. A morning newspaper published every day in the year by The World News-Paper Company of Toronto, Limited...

MONDAY MORNING, MARCH 17.

The Hamilton Verdict.

By a majority of 2743, or practically two to one, Hamilton has at last freed herself from corporation domination. The result was inevitable, and if the Cataract interests feel aggrieved they have only themselves to thank...

A Line of Cheer Each Day of the Year

By John Kefford Bangs. Sing a little, laugh a little, fill your heart with cheer. Drop your worries and your troubles...

The Sky Pilot in No Man's Land.

In this fascinating new story of Ralph Connor's peaceful beauty of our Canadian west is the picturesque setting for the opening pages. Barry, the only son of Richard Dunbar...

AUSTRALIA'S CARE FOR RETURNED MEN

Sydney, Australia, March 16.—Premier Holman, in a speech yesterday, said that the government intended to find employment for 80,000 soldiers in New South Wales...

Was No News Suppression, Says Col. R. F. Parkinson

Ottawa, March 16.—Recent newspaper despatches from London leave the impression that there exists within the circle of the ministry of the over-policy of secrecy, or an inclination to suppress information...

OST THE SALARIES WINNIPEG ALDERMAN

Winnipeg, March 16.—Alderman of the city will likely get their salary increased from \$1,000 to \$1,500, to date from April 1, it was learned today...

Under the Distinguished Patronage of His Excellency the Duke of Devonshire.

"Hunger is a relentless enemy" AND your contribution today may save some babe in Palestine from dying from starvation.

Is that not worth while? Think it over and give.

Tuesday is the Second Day of the 3 Day Helping Hand Campaign.

"Give---and Give to Your Limit."

Helping Hand Fund Of at Least \$100,000 For Destitute Jewry in Palestine

Over 100,000 babies, women, children and old men in Palestine are destitute.

"Blessed is he that considereth the poor."

The Hadassah (Women's Branch) Zionists' Federation of Canada

SIR EDMUND WALKER, Honorary Treasurer. TORONTO CAMPAIGN HEADQUARTERS, 40 King Street East.

Phones, Main 442 and 443.

A "WILD WEST" HOLD-UP



"Take care! You cannot menace one without endangering both."

THE PROMOTER'S WIFE

By JANE PHELPS. Barbara and Neil have a quarrel.

The daring sentence had not left my lips before I would have recalled it, had I been able.

NO AMENITIES AT THIS MEETING

Impersonal Rigidity Marks Agreement of Allies to Give Monthly Rations.

Brussels, March 16.—The German delegates to the conference here regarding the taking over by the allies of the German mercantile fleet...

HOW ABOUT THE INVESTIGATION?

By IDA L. WEBSTER. Good morning, Tom, and all the rest of you folks. Lovely day is it not?

Industrial Development Of Natural Resources

Throughout the Dominion there is increasing realization of the necessity for scientific investigation of natural resources and practical stimulation of industrial development.

German Assembly Has Adopted Bill to Socialize Factories

Copenhagen, March 16.—The German national assembly on Thursday, according to advices from Weimar, adopted a bill concerning the socialization of factories.

Appeal Against Death Sentence On Clemenceau's Assailant

Paris, March 16.—An appeal has been entered against the death sentence passed on Emile Cottin, the assailant of Premier Clemenceau.

NOT PRETENDING ARMY OF ANGELS

Sir Edward Kemp, at London Banquet, Defends Name of Canadian Troops.

London, March 16.—Many Canadian officers were entertained at dinner yesterday by the National Liberal Club in the room in which the Canadian confederation agreement was signed over fifty years ago.

German Assembly Has Adopted Bill to Socialize Factories

Copenhagen, March 16.—The German national assembly on Thursday, according to advices from Weimar, adopted a bill concerning the socialization of factories.

Appeal Against Death Sentence On Clemenceau's Assailant

Paris, March 16.—An appeal has been entered against the death sentence passed on Emile Cottin, the assailant of Premier Clemenceau.

Must Make Gold Deposit.

Germany Will Then Be Entitled to Delivery of 270,000 Tons.

Copenhagen, March 16.—Germany, in consideration of a deposit of 211,000,000 in gold at Brussels, will receive an immediate delivery of 270,000 tons of foodstuffs...

Helping Hand Fund

Of at Least \$100,000 For Destitute Jewry in Palestine

Over 100,000 babies, women, children and old men in Palestine are destitute.

"Blessed is he that considereth the poor."

The Hadassah (Women's Branch) Zionists' Federation of Canada

SIR EDMUND WALKER, Honorary Treasurer. TORONTO CAMPAIGN HEADQUARTERS, 40 King Street East.

Phones, Main 442 and 443.

Paying Bills by Cheque

PAYING by cash may be a great improvement over the olden method of barter but it is not always convenient to have the right change and to protect your money in transit.

Besides, our Trust Savings Department pays 4% interest on your savings. Your account is welcome whether large or small.

Union Trust Company

LIMITED Head Office Corner Bay and Richmond Streets, Toronto. Winnipeg London (Eng.)

NOT PRETENDING ARMY OF ANGELS

Sir Edward Kemp, at London Banquet, Defends Name of Canadian Troops.

London, March 16.—Many Canadian officers were entertained at dinner yesterday by the National Liberal Club in the room in which the Canadian confederation agreement was signed over fifty years ago.

Industrial Development Of Natural Resources

Throughout the Dominion there is increasing realization of the necessity for scientific investigation of natural resources and practical stimulation of industrial development.

German Assembly Has Adopted Bill to Socialize Factories

Copenhagen, March 16.—The German national assembly on Thursday, according to advices from Weimar, adopted a bill concerning the socialization of factories.

Appeal Against Death Sentence On Clemenceau's Assailant

Paris, March 16.—An appeal has been entered against the death sentence passed on Emile Cottin, the assailant of Premier Clemenceau.

Must Make Gold Deposit.

Germany Will Then Be Entitled to Delivery of 270,000 Tons.

Copenhagen, March 16.—Germany, in consideration of a deposit of 211,000,000 in gold at Brussels, will receive an immediate delivery of 270,000 tons of foodstuffs...

Helping Hand Fund

Of at Least \$100,000 For Destitute Jewry in Palestine

Over 100,000 babies, women, children and old men in Palestine are destitute.

"Blessed is he that considereth the poor."

The Hadassah (Women's Branch) Zionists' Federation of Canada

SIR EDMUND WALKER, Honorary Treasurer. TORONTO CAMPAIGN HEADQUARTERS, 40 King Street East.

Phones, Main 442 and 443.

Grand Seal Wool

We show season's new favored gabardines, costing ser shepherd cl... some ranging black.

Silks

Our range is extensive, all weaves evening wear, showing are charmeuse, French voiles, chine, shantung.

Viyella

A perfect unshrinkable, its durability, every conceivable range of color, and g... sent o...

Millinery

Are now a tion of new correct vog department

JOHN C

Ladies' a Gentle... of all kinds ele work excelle NEW Y Phone N. 5165.

D.F.C. CHL

Used by Do for up The Best COUGH ASTHMA Acis D. CHOLERA A Tru NEU RHEUMAT CHE FEVER Prices in Always ask LYMAN BE

SHAMROCK

What is sha St. Patrick's the matter is the Irish and the man in the frontly one-clover and was that he was n article. Even issued with a treatise from hundred years Shamrock is word meaning and was used onstrate the O. ly. Some sa watercourse, wh Did feast wit usquebae Now, wood eaten in salad Ireland, Devon clover is not eaten. About the on Shamrock is us plant's wood, variety of oxa easy to disting by its smooth taste. The fl not composite is white with springing direc

DO KID PI

ALL KIL PREC BRIGHT DIAB R 23

Grand Seasonable Display of WOOL SUITINGS

We show an immense variety of the season's new Spring Suitings in all the favored weaves...

Silks Our range of Suiting and Dress Silks is extensive, embracing all the newest weaves and colors...

Vivella Flannels A perfect washing flannel guaranteed unshrinkable and is unsurpassed for its durability...

Millinery and Mantle Depts. Are now showing an elegant collection of newest models reflecting the correct vogues for the season...

JOHN CATTO & SON TORONTO Ladies' and Gentlemen's HATS

Safeguard your Health with D.J. COLLIS BROWN'S CHLORODYNE

SHAMROCK USUALLY WORN IS ONLY CLOVER

Now, wood sorrel to this day is eaten in salads and stews...

ROLLED DOWN BLUFFS. Joseph Lustina, wanted by the Scarborough police...

BRITISH RAILWAY UNION TO REFUSE COMPROMISE

DODD'S KIDNEY PILLS

THE WEATHER

Observatory, Toronto, March 16.—(8 p.m.) Rain has occurred today in Ontario and western Quebec...

THE BAROMETER. Time. Ther. Bar. Wind. 8 a.m. 37 29.88 20 N.E.

STREET CAR DELAYS. Saturday, March 15, 1919. Bathurst cars delayed 6 minutes at Front and John by train.

RATES FOR NOTICES. Notice of Births, Marriages and Deaths, not over 50 words, \$1.00

BIRTHS. GLUKLICK—To Mr. and Mrs. S. Gluklick, 613 Parliament street, a daughter, on Sunday, March 16.

DEATHS. CANHAM—On Saturday, March 15, 1919, at Toronto General Hospital, Joseph Canham, age 76 years.

MIMICO CONFERS WITH ETOBICOKE. The councils of the municipalities, Mimico and Etobicoke, met this morning...

THREE FLYING CIRCUSES TO BOOM LIBERTY LOAN

CHURCH MUST DISAPPEAR, SAYS SOCIALIST DEPUTY

BELGIAN RELIEF FUND CLOSING MARCH 31st

The work hitherto performed by Relief Organizations will be undertaken by the Belgian Government after March 31st.

MEETING OF ALUMNI University of Toronto. To receive report of the Memorial Committee, all graduates, undergraduates, and ex-students...

ONTARIO CASUALTIES. Ottawa, March 16.—The following casualties were issued today: INFANTRY.

ARCHBISHOP HAMILTON DIES AT LA JOLIA. At the advanced age of 85 Archbishop Charles Hamilton, M.A., D.D., D.C.L., died last Saturday at La Jolla, Cal.

WILL CREDIT SHIP HIRE AGAINST GERMANY'S DEBT

CASES OF DESERTION TRIED AT SHERBROOKE

YOUR EYES Granulated Eyelids, Eyes inflamed by exposure to Sun, Dust and Wind

THREE KILLED BY TORNADO. Oklahoma City, Okla., March 16.—Three persons are reported killed and several others injured in a tornado in Kingfisher County last night.

ALLEN NEXT WEEK

HENRY B. WALTHALL In Louis Joseph Vance's Thrilling Adventure Story, "THE FALSE FACES"

JULIA ARTHUR IN "THE CAVELL CASE"

ETHEL CLAYTON AND ELLIOT DEXTER in "Maggie Pepper"

ANITA STEWART IN "Virtuous Wives"

BLANCHE SWEET IN MAJOR RUPERT HUGHES' ASTOUNDING STORY "The Unpardonable Sin"

NOT A WAR DRAMA--BUT A STORY OF LOVE AND SACRIFICE STAGED IN DEVASTATED BELGIUM.

JOSEPH HOFMANN "MASTER OF THEM ALL"

DETECTIVE COMMITS FORGERY. Windsor, March 16.—William H. Schroll, former private detective and employee of the street railway...

ALEXANDRA TONIGHT

POP. MAT. WED. BEST SEATS \$1. Elliott, Comstock & Gest Present American Best Musical Comedy

POLLY WITH A PAST

"TIGER ROSE" ULRIC and BEST PLAY OF THE SEASON

LOEW'S ALL WEEK PRICES: 10c to 25c

SHEA'S ALL WEEK "NOT YET MARRIED" JANET ADAIR

GAYETY TWICE TO-DAY HARRY HASTINGS' BIG SHOW

STAR MAT DAILY BURLESQUE THE PIRATES

MADISON BLOOR AT BATHURST WILLIAM FARNUM

ue... ING ANGELS... at London Name of pops... any Canadian... at dinner... onal. Liberal... which the Chan... cement was... ago. The... presided and... proposed by... who said that... done perhaps... other domin... more loyal to... dian or proba... ble. Kemp said... he war a man... as a lunatic... would be... yet that was... shined... they would... usand soldiers... sard to dis... cern some re... ation... of the Can... adians, well... come relation... of the Kin... el... the Cana... of barbarians... y wanted to... they do not... position they... e newspapers... of what had... bling and... say that the... an army had... any other con... perial forces... Queen's... 16.—Dr. E... y Treatment... in Queen's... accepted a... on Theologi... City. Dr... position three... ed to leave... s concluded... nd... D... stine in... ed is... at... ereth... or."... en's... ch... ada

CLASSIFIED ADVERTISING

Help Wanted. A SMART BUTCHER wanted for store work. Apply 2855 Dundas street. Junc. 6129.

Help Wanted—Female. WANTED AT ONCE, experienced housemaid. Apply Mrs. H. D. Warren, 95 Wesley street, Tel. North 237.

Agents Wanted. AGENTS WANTED in every town in Canada to sell a line of goods used in every home.

Situations Vacant. LEARN WIRELESS, it is so easy—Facilitating work for young men. Train for first class certificate in a few months.

Situations Wanted. GRADUATE of Toronto University in Civil engineering.

Business Chances. WANTED—Speculator with \$250, to purchase interest in Furcoping gold mining proposition.

Bicycles and Motor Cars. BICYCLES wanted for cash, McLeod, 11 King west.

Dentistry. DR. KNIGHT, Endodontia Specialist. Practice limited to painless tooth extraction.

Dancing. BALLROOM and stage dancing, individual and class instruction.

Electric Wiring and Fixtures. SPECIAL prices on electrical fixtures and wiring.

Graduate Nurses. GRADUATE MASSEUR and nurse-magnetic, electric, therapeutic.

Herbalists. ALVER'S CREAM OINTMENT for Rheumatism, Pile Ointment for Hemorrhoids.

Legal Cards. IRWIN, MALES & IRWIN, Barristers, Solicitors, Notaries, Yonge and Queen streets.

Live Birds. HOPE'S—Canada's Leader and Greatest Bird Store, 109 Queen street west.

Lumber. OAK FLOORING, Wall Boards, Kinds of Hardwood, Sash, Blinds.

Lathing and Plastering. ESTIMATES given on any size contract. Work on 1047-1051, 1053, 1055, 1057, 1059, 1061, 1063, 1065, 1067, 1069, 1071, 1073, 1075, 1077, 1079, 1081, 1083, 1085, 1087, 1089, 1091, 1093, 1095, 1097, 1099, 1101, 1103, 1105, 1107, 1109, 1111, 1113, 1115, 1117, 1119, 1121, 1123, 1125, 1127, 1129, 1131, 1133, 1135, 1137, 1139, 1141, 1143, 1145, 1147, 1149, 1151, 1153, 1155, 1157, 1159, 1161, 1163, 1165, 1167, 1169, 1171, 1173, 1175, 1177, 1179, 1181, 1183, 1185, 1187, 1189, 1191, 1193, 1195, 1197, 1199, 1201, 1203, 1205, 1207, 1209, 1211, 1213, 1215, 1217, 1219, 1221, 1223, 1225, 1227, 1229, 1231, 1233, 1235, 1237, 1239, 1241, 1243, 1245, 1247, 1249, 1251, 1253, 1255, 1257, 1259, 1261, 1263, 1265, 1267, 1269, 1271, 1273, 1275, 1277, 1279, 1281, 1283, 1285, 1287, 1289, 1291, 1293, 1295, 1297, 1299, 1301, 1303, 1305, 1307, 1309, 1311, 1313, 1315, 1317, 1319, 1321, 1323, 1325, 1327, 1329, 1331, 1333, 1335, 1337, 1339, 1341, 1343, 1345, 1347, 1349, 1351, 1353, 1355, 1357, 1359, 1361, 1363, 1365, 1367, 1369, 1371, 1373, 1375, 1377, 1379, 1381, 1383, 1385, 1387, 1389, 1391, 1393, 1395, 1397, 1399, 1401, 1403, 1405, 1407, 1409, 1411, 1413, 1415, 1417, 1419, 1421, 1423, 1425, 1427, 1429, 1431, 1433, 1435, 1437, 1439, 1441, 1443, 1445, 1447, 1449, 1451, 1453, 1455, 1457, 1459, 1461, 1463, 1465, 1467, 1469, 1471, 1473, 1475, 1477, 1479, 1481, 1483, 1485, 1487, 1489, 1491, 1493, 1495, 1497, 1499, 1501, 1503, 1505, 1507, 1509, 1511, 1513, 1515, 1517, 1519, 1521, 1523, 1525, 1527, 1529, 1531, 1533, 1535, 1537, 1539, 1541, 1543, 1545, 1547, 1549, 1551, 1553, 1555, 1557, 1559, 1561, 1563, 1565, 1567, 1569, 1571, 1573, 1575, 1577, 1579, 1581, 1583, 1585, 1587, 1589, 1591, 1593, 1595, 1597, 1599, 1601, 1603, 1605, 1607, 1609, 1611, 1613, 1615, 1617, 1619, 1621, 1623, 1625, 1627, 1629, 1631, 1633, 1635, 1637, 1639, 1641, 1643, 1645, 1647, 1649, 1651, 1653, 1655, 1657, 1659, 1661, 1663, 1665, 1667, 1669, 1671, 1673, 1675, 1677, 1679, 1681, 1683, 1685, 1687, 1689, 1691, 1693, 1695, 1697, 1699, 1701, 1703, 1705, 1707, 1709, 1711, 1713, 1715, 1717, 1719, 1721, 1723, 1725, 1727, 1729, 1731, 1733, 1735, 1737, 1739, 1741, 1743, 1745, 1747, 1749, 1751, 1753, 1755, 1757, 1759, 1761, 1763, 1765, 1767, 1769, 1771, 1773, 1775, 1777, 1779, 1781, 1783, 1785, 1787, 1789, 1791, 1793, 1795, 1797, 1799, 1801, 1803, 1805, 1807, 1809, 1811, 1813, 1815, 1817, 1819, 1821, 1823, 1825, 1827, 1829, 1831, 1833, 1835, 1837, 1839, 1841, 1843, 1845, 1847, 1849, 1851, 1853, 1855, 1857, 1859, 1861, 1863, 1865, 1867, 1869, 1871, 1873, 1875, 1877, 1879, 1881, 1883, 1885, 1887, 1889, 1891, 1893, 1895, 1897, 1899, 1901, 1903, 1905, 1907, 1909, 1911, 1913, 1915, 1917, 1919, 1921, 1923, 1925, 1927, 1929, 1931, 1933, 1935, 1937, 1939, 1941, 1943, 1945, 1947, 1949, 1951, 1953, 1955, 1957, 1959, 1961, 1963, 1965, 1967, 1969, 1971, 1973, 1975, 1977, 1979, 1981, 1983, 1985, 1987, 1989, 1991, 1993, 1995, 1997, 1999, 2001, 2003, 2005, 2007, 2009, 2011, 2013, 2015, 2017, 2019, 2021, 2023, 2025, 2027, 2029, 2031, 2033, 2035, 2037, 2039, 2041, 2043, 2045, 2047, 2049, 2051, 2053, 2055, 2057, 2059, 2061, 2063, 2065, 2067, 2069, 2071, 2073, 2075, 2077, 2079, 2081, 2083, 2085, 2087, 2089, 2091, 2093, 2095, 2097, 2099, 2101, 2103, 2105, 2107, 2109, 2111, 2113, 2115, 2117, 2119, 2121, 2123, 2125, 2127, 2129, 2131, 2133, 2135, 2137, 2139, 2141, 2143, 2145, 2147, 2149, 2151, 2153, 2155, 2157, 2159, 2161, 2163, 2165, 2167, 2169, 2171, 2173, 2175, 2177, 2179, 2181, 2183, 2185, 2187, 2189, 2191, 2193, 2195, 2197, 2199, 2201, 2203, 2205, 2207, 2209, 2211, 2213, 2215, 2217, 2219, 2221, 2223, 2225, 2227, 2229, 2231, 2233, 2235, 2237, 2239, 2241, 2243, 2245, 2247, 2249, 2251, 2253, 2255, 2257, 2259, 2261, 2263, 2265, 2267, 2269, 2271, 2273, 2275, 2277, 2279, 2281, 2283, 2285, 2287, 2289, 2291, 2293, 2295, 2297, 2299, 2301, 2303, 2305, 2307, 2309, 2311, 2313, 2315, 2317, 2319, 2321, 2323, 2325, 2327, 2329, 2331, 2333, 2335, 2337, 2339, 2341, 2343, 2345, 2347, 2349, 2351, 2353, 2355, 2357, 2359, 2361, 2363, 2365, 2367, 2369, 2371, 2373, 2375, 2377, 2379, 2381, 2383, 2385, 2387, 2389, 2391, 2393, 2395, 2397, 2399, 2401, 2403, 2405, 2407, 2409, 2411, 2413, 2415, 2417, 2419, 2421, 2423, 2425, 2427, 2429, 2431, 2433, 2435, 2437, 2439, 2441, 2443, 2445, 2447, 2449, 2451, 2453, 2455, 2457, 2459, 2461, 2463, 2465, 2467, 2469, 2471, 2473, 2475, 2477, 2479, 2481, 2483, 2485, 2487, 2489, 2491, 2493, 2495, 2497, 2499, 2501, 2503, 2505, 2507, 2509, 2511, 2513, 2515, 2517, 2519, 2521, 2523, 2525, 2527, 2529, 2531, 2533, 2535, 2537, 2539, 2541, 2543, 2545, 2547, 2549, 2551, 2553, 2555, 2557, 2559, 2561, 2563, 2565, 2567, 2569, 2571, 2573, 2575, 2577, 2579, 2581, 2583, 2585, 2587, 2589, 2591, 2593, 2595, 2597, 2599, 2601, 2603, 2605, 2607, 2609, 2611, 2613, 2615, 2617, 2619, 2621, 2623, 2625, 2627, 2629, 2631, 2633, 2635, 2637, 2639, 2641, 2643, 2645, 2647, 2649, 2651, 2653, 2655, 2657, 2659, 2661, 2663, 2665, 2667, 2669, 2671, 2673, 2675, 2677, 2679, 2681, 2683, 2685, 2687, 2689, 2691, 2693, 2695, 2697, 2699, 2701, 2703, 2705, 2707, 2709, 2711, 2713, 2715, 2717, 2719, 2721, 2723, 2725, 2727, 2729, 2731, 2733, 2735, 2737, 2739, 2741, 2743, 2745, 2747, 2749, 2751, 2753, 2755, 2757, 2759, 2761, 2763, 2765, 2767, 2769, 2771, 2773, 2775, 2777, 2779, 2781, 2783, 2785, 2787, 2789, 2791, 2793, 2795, 2797, 2799, 2801, 2803, 2805, 2807, 2809, 2811, 2813, 2815, 2817, 2819, 2821, 2823, 2825, 2827, 2829, 2831, 2833, 2835, 2837, 2839, 2841, 2843, 2845, 2847, 2849, 2851, 2853, 2855, 2857, 2859, 2861, 2863, 2865, 2867, 2869, 2871, 2873, 2875, 2877, 2879, 2881, 2883, 2885, 2887, 2889, 2891, 2893, 2895, 2897, 2899, 2901, 2903, 2905, 2907, 2909, 2911, 2913, 2915, 2917, 2919, 2921, 2923, 2925, 2927, 2929, 2931, 2933, 2935, 2937, 2939, 2941, 2943, 2945, 2947, 2949, 2951, 2953, 2955, 2957, 2959, 2961, 2963, 2965, 2967, 2969, 2971, 2973, 2975, 2977, 2979, 2981, 2983, 2985, 2987, 2989, 2991, 2993, 2995, 2997, 2999, 3001, 3003, 3005, 3007, 3009, 3011, 3013, 3015, 3017, 3019, 3021, 3023, 3025, 3027, 3029, 3031, 3033, 3035, 3037, 3039, 3041, 3043, 3045, 3047, 3049, 3051, 3053, 3055, 3057, 3059, 3061, 3063, 3065, 3067, 3069, 3071, 3073, 3075, 3077, 3079, 3081, 3083, 3085, 3087, 3089, 3091, 3093, 3095, 3097, 3099, 3101, 3103, 3105, 3107, 3109, 3111, 3113, 3115, 3117, 3119, 3121, 3123, 3125, 3127, 3129, 3131, 3133, 3135, 3137, 3139, 3141, 3143, 3145, 3147, 3149, 3151, 3153, 3155, 3157, 3159, 3161, 3163, 3165, 3167, 3169, 3171, 3173, 3175, 3177, 3179, 3181, 3183, 3185, 3187, 3189, 3191, 3193, 3195, 3197, 3199, 3201, 3203, 3205, 3207, 3209, 3211, 3213, 3215, 3217, 3219, 3221, 3223, 3225, 3227, 3229, 3231, 3233, 3235, 3237, 3239, 3241, 3243, 3245, 3247, 3249, 3251, 3253, 3255, 3257, 3259, 3261, 3263, 3265, 3267, 3269, 3271, 3273, 3275, 3277, 3279, 3281, 3283, 3285, 3287, 3289, 3291, 3293, 3295, 3297, 3299, 3301, 3303, 3305, 3307, 3309, 3311, 3313, 3315, 3317, 3319, 3321, 3323, 3325, 3327, 3329, 3331, 3333, 3335, 3337, 3339, 3341, 3343, 3345, 3347, 3349, 3351, 3353, 3355, 3357, 3359, 3361, 3363, 3365, 3367, 3369, 3371, 3373, 3375, 3377, 3379, 3381, 3383, 3385, 3387, 3389, 3391, 3393, 3395, 3397, 3399, 3401, 3403, 3405, 3407, 3409, 3411, 3413, 3415, 3417, 3419, 3421, 3423, 3425, 3427, 3429, 3431, 3433, 3435, 3437, 3439, 3441, 3443, 3445, 3447, 3449, 3451, 3453, 3455, 3457, 3459, 3461, 3463, 3465, 3467, 3469, 3471, 3473, 3475, 3477, 3479, 3481, 3483, 3485, 3487, 3489, 3491, 3493, 3495, 3497, 3499, 3501, 3503, 3505, 3507, 3509, 3511, 3513, 3515, 3517, 3519, 3521, 3523, 3525, 3527, 3529, 3531, 3533, 3535, 3537, 3539, 3541, 3543, 3545, 3547, 3549, 3551, 3553, 3555, 3557, 3559, 3561, 3563, 3565, 3567, 3569, 3571, 3573, 3575, 3577, 3579, 3581, 3583, 3585, 3587, 3589, 3591, 3593, 3595, 3597, 3599, 3601, 3603, 3605, 3607, 3609, 3611, 3613, 3615, 3617, 3619, 3621, 3623, 3625, 3627, 3629, 3631, 3633, 3635, 3637, 3639, 3641, 3643, 3645, 3647, 3649, 3651, 3653, 3655, 3657, 3659, 3661, 3663, 3665, 3667, 3669, 3671, 3673, 3675, 3677, 3679, 3681, 3683, 3685, 3687, 3689, 3691, 3693, 3695, 3697, 3699, 3701, 3703, 3705, 3707, 3709, 3711, 3713, 3715, 3717, 3719, 3721, 3723, 3725, 3727, 3729, 3731, 3733, 3735, 3737, 3739, 3741, 3743, 3745, 3747, 3749, 3751, 3753, 3755, 3757, 3759, 3761, 3763, 3765, 3767, 3769, 3771, 3773, 3775, 3777, 3779, 3781, 3783, 3785, 3787, 3789, 3791, 3793, 3795, 3797, 3799, 3801, 3803, 3805, 3807, 3809, 3811, 3813, 3815, 3817, 3819, 3821, 3823, 3825, 3827, 3829, 3831, 3833, 3835, 3837, 3839, 3841, 3843, 3845, 3847, 3849, 3851, 3853, 3855, 3857, 3859, 3861, 3863, 3865, 3867, 3869, 3871, 3873, 3875, 3877, 3879, 3881, 3883, 3885, 3887, 3889, 3891, 3893, 3895, 3897, 3899, 3901, 3903, 3905, 3907, 3909, 3911, 3913, 3915, 3917, 3919, 3921, 3923, 3925, 3927, 3929, 3931, 3933, 3935, 3937, 3939, 3941, 3943, 3945, 3947, 3949, 3951, 3953, 3955, 3957, 3959, 3961, 3963, 3965, 3967, 3969, 3971, 3973, 3975, 3977, 3979, 3981, 3983, 3985, 3987, 3989, 3991, 3993, 3995, 3997, 3999, 4001, 4003, 4005, 4007, 4009, 4011, 4013, 4015, 4017, 4019, 4021, 4023, 4025, 4027, 4029, 4031, 4033, 4035, 4037, 4039, 4041, 4043, 4045, 4047, 4049, 4051, 4053, 4055, 4057, 4059, 4061, 4063, 4065, 4067, 4069, 4071, 4073, 4075, 4077, 4079, 4081, 4083, 4085, 4087, 4089, 4091, 4093, 4095, 4097, 4099, 4101, 4103, 4105, 4107, 4109, 4111, 4113, 4115, 4117, 4119, 4121, 4123, 4125, 4127, 4129, 4131, 4133, 4135, 4137, 4139, 4141, 4143, 4145, 4147, 4149, 4151, 4153, 4155, 4157, 4159, 4161, 4163, 4165, 4167, 4169, 4171, 4173, 4175, 4177, 4179, 4181, 4183, 4185, 4187, 4189, 4191, 4193, 4195, 4197, 4199, 4201, 4203, 4205, 4207, 4209, 4211, 4213, 4215, 4217, 4219, 4221, 4223, 4225, 4227, 4229, 4231, 4233, 4235, 4237, 4239, 4241, 4243, 4245, 4247, 4249, 4251, 4253, 4255, 4257, 4259, 4261, 4263, 4265, 4267, 4269, 4271, 4273, 4275, 4277, 4279, 4281, 4283, 4285, 4287, 4289, 4291, 4293, 4295, 4297, 4299, 4301, 4303, 4305, 4307, 4309, 4311, 4313, 4315, 4317, 4319, 4321, 4323, 4325, 4327, 4329, 4331, 4333, 4335, 4337, 4339, 4341, 4343, 4345, 4347, 4349, 4351, 4353, 4355, 4357, 4359, 4361, 4363, 4365, 4367, 4369, 4371, 4373, 4375, 4377, 4379, 4381, 4383, 4385, 4387, 4389, 4391, 4393, 4395, 4397, 4399, 4401, 4403, 4405, 4407, 4409, 4411, 4413, 4415, 4417, 4419, 4421, 4423, 4425, 4427, 4429, 4431, 4433, 4435, 4437, 4439, 4441, 4443, 4445, 4447, 4449, 4451, 4453, 4455, 4457, 4459, 4461, 4463, 4465, 4467, 4469, 4471, 4473, 4475, 4477, 4479, 4481, 4483, 4485, 4487, 4489, 4491, 4493, 4495, 4497, 4499, 4501, 4503, 4505, 4507, 4509, 4511, 4513, 4515, 4517, 4519, 4521, 4523, 4525, 4527, 4529, 4531, 4533, 4535, 4537, 4539, 4541, 4543, 4545, 4547, 4549, 4551, 4553, 4555, 4557, 4559, 4561, 4563, 4565, 4567, 4569, 4571, 4573, 4575, 4577, 4579, 4581, 4583, 4585, 4587, 4589, 4591, 4593, 4595, 4597, 4599, 4601, 4603, 4605, 4607, 4609, 4611, 4613, 4615, 4617, 4619, 4621, 4623, 4625, 4627, 4629, 4631, 4633, 4635, 4637, 4639, 4641, 4643, 4645, 4647, 4649, 4651, 4653, 4655, 4657, 4659, 4661, 4663, 4665, 4667, 4669, 4671, 4673, 4675, 4677, 4679, 4681, 4683, 4685, 4687, 4689, 4691, 4693, 4695, 4697, 4699, 4701, 4703, 4705, 4707, 4709, 4711, 4713, 4715, 4717, 4719, 4721, 4723, 4725, 4727, 4729, 4731, 4733, 4735, 4737, 4739, 4741, 4743, 4745, 4747, 4749, 4751, 4753, 4755, 4757, 4759, 4761, 4763, 4765, 4767, 4769, 4771, 4773, 4775, 4777, 4779, 4781, 4783, 4785, 4787, 4789, 4791, 4793, 4795, 4797, 4799, 4801, 4803, 4805,

10 NEW PORCUPINE IMPERIAL MINES, LIMITED

Capital, \$3,000,000. Par Value, \$1.00 Each. No Personal Liability.

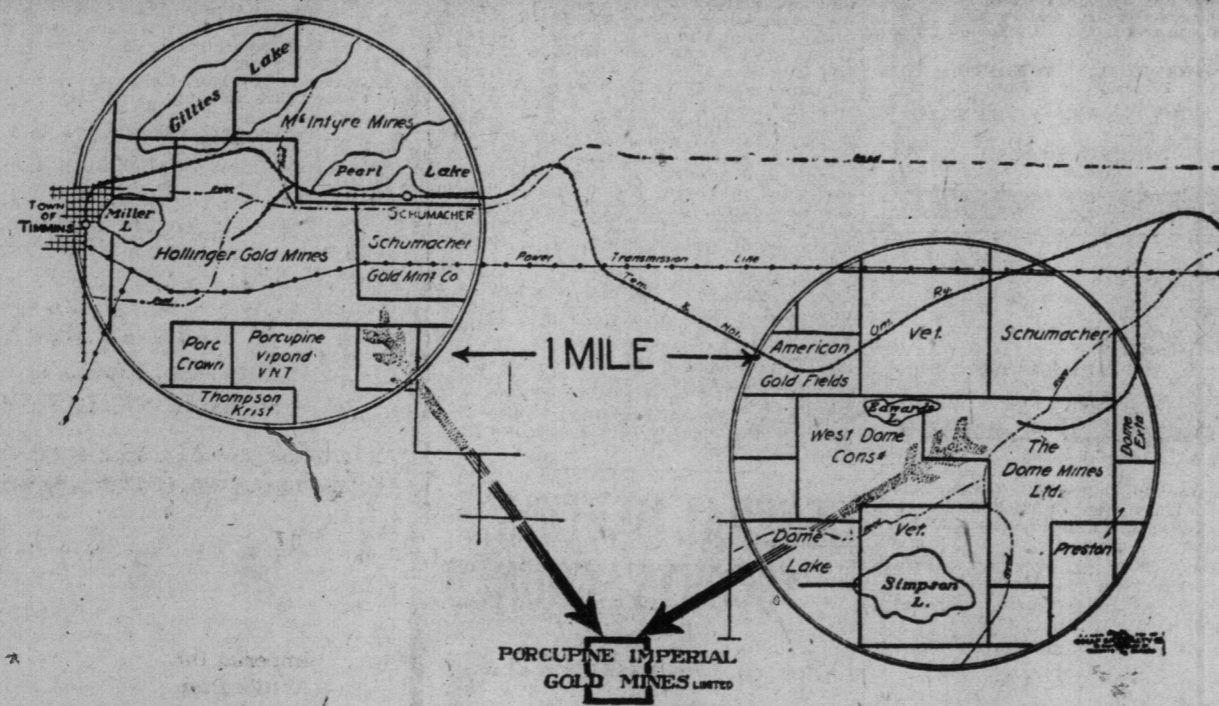
In the event of over-subscription the right is reserved to make pro rata allotments.

These Shares Are Not Pooled (Deliveries on Payment)



PROPERTY

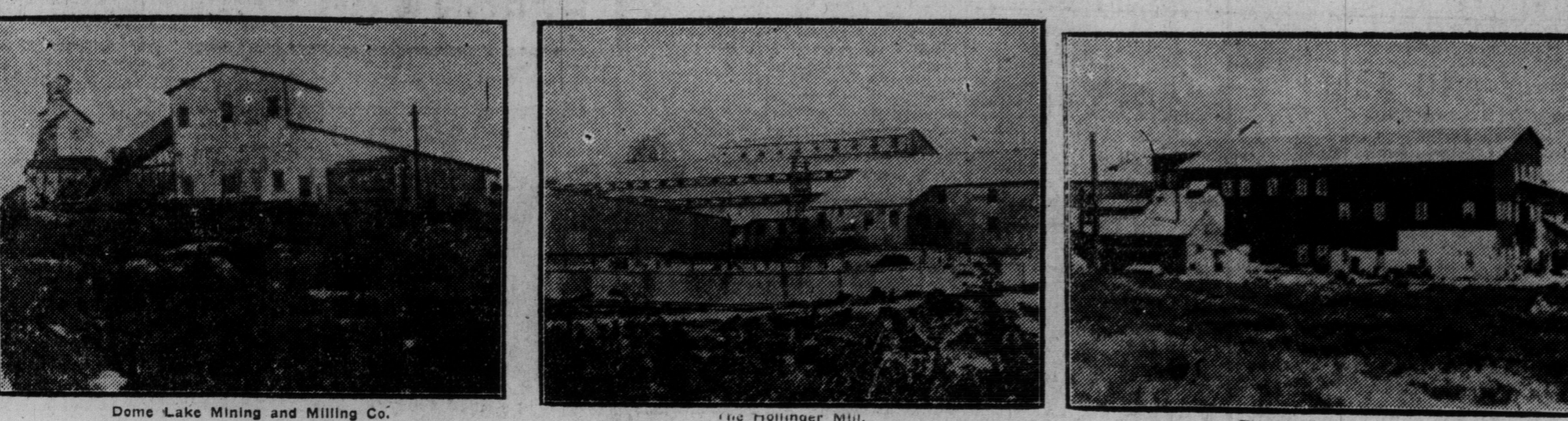
Porcupine mining district was discovered about the end of the year 1909, and some months later, the property of this Company was acquired by purchase. The prospects of an extremely rich mine were so good that buildings were erected, machinery installed, and active work commenced. During the summer of 1911 Porcupine was swept by a very disastrous fire, when not only all the surface equipment of Porcupine Imperial was destroyed, but, owing to an explosion of dynamite, the timbers of the shaft as well. Since 1911 the property has again been equipped, although this double expense was a severe handicap to the Company.



WORKINGS

A shaft was sunk to a depth of 115 feet and approximately 500 feet of lateral work completed on the 100-foot level. A number of very promising veins were cut in the course of the latter work, one having a width of about 7 feet, which assayed \$8 per ton. Farther along this vein values of from \$24 to \$300 per ton were found, and another vein running North and South, believed to be the extension of that found on the adjoining property to the North, was cut. Several other veins appeared on the surface; one of these has a width of some 20 feet, with values of approximately \$10 per ton; underground workings stopped when apparently within 50 feet of the latter. Since then two diamond drill holes have been put down, one 520 feet, cutting an ore body running \$11.20 per ton, and another, 435 feet, cutting 5 1/2 feet of \$8 ore.

The above information has been given us by H. L. Taylor. While not guaranteed by us, we believe it to be correct.



OPINIONS AND CRITICISMS FROM BROKERS AND THE PRESS:

<p>THE TORONTO DAILY NEWS.</p> <p>March 6th, 1919.</p> <p>L. E. Plummer, Esq., Plummer & Company, 108 Bay Street, Toronto.</p> <p>Dear Sir: In answer to your request for my opinion regarding the possibilities of the Porcupine Imperial Gold Mines for making good, I wish to say that I do not know what results have been obtained from former development work. The Company has issued a map, which bears the signature of H. L. Taylor, the President of the Company, showing underground workings, veins and supposed veins of the Porcupine Imperial Mines. If it demonstrates the actual condition at the property, I think the mine has a good chance to make good provided it is properly managed.</p> <p>Yours truly, R. GOLDWIN SMITH, Financial Editor.</p>	<p>TORONTO WORLD</p> <p>March 12, 1919.</p> <p>"A company reorganization appears to be under way. The property, which used to be very well regarded, is in Deloro, on the southern boundary of Tidale, and had considerable work done on it at one time."</p> <p>(Signed) J. P. CANNON & CO., Members Standard Stock Exchange, Established 1910.</p>	<p>NEW ORE BODY ON IMPERIAL.</p> <p>(Copied)</p> <p><i>Assays Returned Most Promising.</i></p> <p>Some remarkable assays have been obtained from the new ore body struck in the wall of the drift at the Imperial Mine, Porcupine. From a hand specimen of ore not showing any gold assay of nearly \$80 was returned. It is not anticipated that the run of the mine will approach this, but it is an indication that, while little gold shows, there is much contained in the ore. This ore body was struck in the hanging wall. The result was the exposure of an ore body estimated to be eight feet wide after two rounds had been fired. There are occasional patches of very fine free gold in the ore, but the sulphides are very heavy in dark quartz. The drift will be continued so as to run into this ore body and determine its length. There is also in the drift about fourteen feet of rock, which may or may not be of a profitable grade.</p>	<p>"If location, formation and assays count for anything, Imperial certainly looks like a mine in the making. This is the first mining enterprise we have endorsed over our signature during our fifteen years in business. Orders will have our careful attention."</p> <p>(Signed) W. T. CHAMBERS, Member Standard Stock Exchange.</p>	<p>"Regarding Imperial, my impression is that the property has merit, and if taken hold of and worked properly, should develop some commercial values."</p> <p>(Signed) W. H. H. DAVENPORT, Investment Securities, Buffalo.</p>	<p>"The New Porcupine Imperial Mines, Ltd., if properly financed and managed, has just as good a chance of developing into a paying property, as any other of the mines situated in this well-known district."</p> <p>(Signed) TANNER, GATES & CO., Members of the Standard Stock Exchange, Dominion Bank Building, Toronto.</p>		
<p>"We look for a big movement in this stock when listed."</p> <p>(Signed) HAYES, MARKHAM & CO. Continuously associated with mining for 10 years.</p>	<p>"Porcupine Imperial in the early days was always looked upon as one of the big things in the camp."</p> <p>"The reorganization should furnish sufficient money to further develop to the producing stage, and we look for a very active market when the new stock is listed."</p> <p>(Signed) VICKERY & CO., Members Standard Stock Exchange.</p>	<p>"Porcupine Imperial Mines has always been favorably thought of in the North, and we believe that if sufficient money is judiciously spent on the property, it would become a producer."</p> <p>(Signed) J. P. CANNON & CO., Members Standard Stock Exchange, Established 1910.</p>	<p>"I have been in touch with the Imperial, since it practically started working, and from all reports I have received on it, I think that with further development it will make a mine."</p> <p>(Signed) F. ASA HALL Members Standard Stock Exchange, Standard Stock Exchange Bldg., Toronto.</p>	<p>"I have been in touch with the Imperial, since it practically started working, and from all reports I have received on it, I think that with further development it will make a mine."</p> <p>(Signed) F. ASA HALL Members Standard Stock Exchange, Standard Stock Exchange Bldg., Toronto.</p>	<p>"Porcupine Imperial is favorably known in the camp, and when financed and reopened, we look for a big advance in the market."</p> <p>Never identified with promoters, we solicit orders in Imperial.</p> <p>(Signed) HOWARD GRAHAM & CO. Members Standard Stock Exchange.</p>	<p>"If the values now found on the 109-ft. level continue at depth, Imperial should become a very big producer when properly financed."</p> <p>(Signed) PLUMMER & CO., Limited, 108 Bay Street.</p>	<p>"The New Porcupine Imperial Mines, Ltd., if properly financed and managed, has just as good a chance of developing into a paying property, as any other of the mines situated in this well-known district."</p> <p>(Signed) TANNER, GATES & CO., Members of the Standard Stock Exchange, Dominion Bank Building, Toronto.</p>

Send Your Order to Any of the Above Brokers, Toronto, Canada.

Send for copy of prospectus filed with government. Plummer & Company, Limited, optionees of these shares.

FLORIDA TOMATOES—NEW CABBAGE

FLORIDA HEAD LETTUCE ORANGES AND LEMONS At Lowest Prices

H. J. ASH 44-46 CHURCH STREET Main 3102, 6932

Canada Food Board License Numbers 2-942, 2-944, 2-517.

WHOLESALE FRUITS AND VEGETABLES

New Cabbage—The first straight car of Florida new cabbage for this season came in Saturday to White & Co., Limited, selling at \$4.50 per hamper; California cabbage also came in, and is selling at \$6 per case (125 lbs.).

Strawberries—Florida strawberries come in again, selling at 75c to \$1 per box, according to quality.

H. J. Ash had Florida tomatoes, selling at 45c per six-basket crate; California iceberg head lettuce at \$5 per case; new cabbage at \$5 per case of 125 lbs.; oranges at \$6 to \$6.75 per dozen.

McWilliam & Everist, Limited, had a car of old vegetables, cabbage selling at \$3 per case; onions at \$2.50 to \$3 per 75-lb. bag; a car of Volunteer brand sun-kissed oranges, selling at \$8 to \$1 per case; rhubarb at \$1.25 per dozen; lemons at \$1.50 to \$2 per case.

A. A. McKinnon had a car of Ontario potatoes, selling at \$1.40 per bag; carrots and beets at 90c per bag; parsnips at 75c per bag; turnips at 65c per bag; onions at \$2 to \$2.50 per case.

D. Spence had a car of Ontario potatoes, selling at \$1.35 to \$1.40 per bag.

H. Peters had Florida tomatoes, selling at \$5.50 to \$7 per six-basket crate; California cauliflower at \$4.75 per case; oranges at \$5 to \$7 per case; grapefruit at \$5.50 to \$6 per case.

W. J. McCard Co., Limited, had celery at \$7.50 to \$8 per crate; iceberg head lettuce at \$7.50 per case; cauliflower at \$4.75 per case; carrots at \$1.50 to \$1.75 per bag; rhubarb at \$1.25 per dozen.

White & Co., Limited, had a car of Florida cabbage, selling at \$4.50 per hamper; a car of Cuban grapefruit, selling at \$3 to \$4 per case; a car of bananas, selling at 75c per case; mushrooms at \$3.25 per basket; green onions at 30c to 35c per dozen.

The Union Fruit & Produce, Limited, had a car of Ontario potatoes, selling at \$1.40 per bag; carrots at \$1.50 per bag; celery at \$7.50 to \$8 per case.

Stronach & Sons had Ontario potatoes, selling at \$1.40 to \$1.50 per bag; carrots at \$4.75 to \$6.50 per case; lemons at 25c per case.

Wholesale Vegetables

Beans—Prime white, dried, \$2.75 to \$3.25 bushel; hand-picked, \$2.50 to \$4 per bushel; green (new), \$3.50 to \$10 per hamper.

Beets—Canadian, 90c to \$1 per bag.

Brussels sprouts—None in.

Cabbage—\$2.50 to \$2.75 per bbl.

Carrots—75c to \$1 per case.

Cauliflower—California, \$2.25 to \$2.50 per case; Ontario, \$4.50 to \$5 per standard case.

Celery—California, \$14 to \$15 per crate; Florida, \$7 to \$7.50 per crate.

Cucumbers—\$5.50 to \$6 per dozen.

Lettuce—Texas head, \$4.50 per hamper; Cal. iceberg, \$7 per case; home-grown leaf, 45c to 40c per dozen.

Mushrooms—\$3.25 per basket.

Onions—\$2.50 to \$3 per 75-lb. bag; \$3.50 to \$4 per 100-lb. bag; green, 50c to 40c per dozen bunches.

Parsnips—75c to 90c per bag.

Potatoes—Ontario, \$1.35 to \$1.60 per bag.

Parasley—Home-grown, \$1 per 11-quart basket; imported, \$1 per dozen bunches.

Shallots—75c to 85c per dozen.

Spinach—\$1.50 to \$1.80 per case, \$3 to \$3.25 per bushel; home, \$2 per case.

Turnips—60c to 75c per bag.

Wholesale Wholesale

Filberts—Big lots, 18c per lb.; less, 30c per lb.

Cocoanuts—\$2 to \$10 per sack.

Peanuts—Green, 13c per lb.; roasted, 15c per lb.; less, 21c per lb.

Dates—Tadpole, \$7 per case; Dromedary, \$7.75 to \$8 per case.

FARM PRODUCE

St. Lawrence and North Toronto Markets.

There was a fairly heavy attendance at both markets Saturday, and the bulk of the offerings sold well at firm prices. Butter again failed to satisfy the demand, and was soon disposed of at 60c to 62c per lb., the bulk of the choice quality selling at 58c to 60c per lb.

Eggs were brought in in large quantities and were a slow, drizzly sale, a few opening at 18c and 60c per dozen, but most at 14c per dozen, with some closing at as low as 10c per dozen.

Poultry offerings were quite light, fowl selling at 28c per lb., and chickens at 40c to 45c per lb.

Apples—Prices were very firm, ranging from 55c to 60c per six-quart basket, \$3 per bushel, and \$8 to \$10 per bbl.

Grains

See farmers' market board of trade quotations.

Hay and Straw—

Hay, No. 1, per ton, \$25.00 to \$27.00
Hay, No. 2, per ton, 24.00 to 26.00
Straw, rye, per ton, 18.00 to 20.00
Straw, loose, per ton, 14.00 to 15.00
Straw, oat, banded, per ton, 17.00 to 18.00

Dairy Produce, Retail—

Eggs, new, per doz., \$0.45 to \$0.60
Bulk going at 0.40 to 0.50
Butter, farmers' dairy, 0.50 to 0.60
Spring chickens, lb., 0.38 to 0.42
Ducklings, lb., 0.25 to 0.28
Bolling fowl, lb., 0.25 to 0.28
Turkeys, lb., 0.48 to 0.65

Farm Produce, Wholesale—

Butter, creamery, fresh-made, lb. squares, \$0.26 to \$0.27
do. do. cuts, \$0.24 to \$0.27
Butter, dairy, lb., 0.42 to 0.50
Oleomargarine, lb., 0.32 to 0.34
Eggs, cold-storage, doz., 0.42 to 0.48
Eggs, new-laid, doz., 0.42 to 0.48
Cheese, year-old Cheddar, per lb., 0.35 to 0.38
Cheese, June, lb., 0.31 to 0.32
Cheese, September, lb., 0.27 to 0.29
Honey, 5, 10 and 60-lb., 0.23 to 0.25
Honey, sections, each, 0.30 to 0.40

Pure Lard—

Tierces, lb., \$0.26 to \$0.28
20-lb. rolls, 0.25 to 0.27
Found prints, 0.23 to 0.25
Shortening—

Tierces, lb., \$0.24 to \$0.26
20-lb. rolls, 0.22 to 0.24
Found prints, 0.21 to 0.23

Fresh Meats, Wholesale—

Beef, hindquarters, cwt., \$22.00 to \$25.00
Beef, choice sides, cwt., 21.00 to 24.00
Beef, forequarters, cwt., 18.00 to 20.00
Beef, medium, cwt., 18.00 to 20.00
Beef, common, cwt., 15.00 to 17.00
Lamb, yearling, lb., 0.20 to 0.22
Mutton, cwt., 23.00 to 24.00
Veal, No. 1, cwt., 24.00 to 26.00
Veal, common, cwt., 18.00 to 20.00
Hog, 120 to 150 lbs., cwt., 25.00 to 27.00
Hogs, heavy, cwt., 18.00 to 20.00
Poultry Prices Being Paid to Producer—

Live-Weight Prices—

Chickens, crate-fed, lb., \$0.30 to \$0.35
Chickens, lb., 0.25 to 0.28
Hens, under 4 1/2 lbs., lb., 0.25 to 0.28
Hens, 4 1/2 to 6 lbs., lb., 0.30 to 0.33
Hens, over 6 lbs., lb., 0.32 to 0.35
Roosters, lb., 0.22 to 0.25
Ducks, lb., 0.35 to 0.40

Dressed—

Chickens, crate-fed, lb., \$0.34 to \$0.38
Chickens, lb., 0.28 to 0.32
Hens, under 4 1/2 lbs., lb., 0.25 to 0.28
Hens, 4 1/2 to 6 lbs., lb., 0.30 to 0.33
Hens, over 6 lbs., lb., 0.32 to 0.35
Roosters, lb., 0.22 to 0.25
Turkeys, young, lb., 0.45 to 0.50
Turkeys, old, lb., 0.37 to 0.42

Wholesale Seeds—

No. 1 alfalfa, cwt., \$3.00 to \$3.50
No. 2 alfalfa, cwt., 28.00 to 32.00
No. 3 alfalfa, cwt., 26.00 to 30.00
No. 1 red clover, cwt., 45.00 to 50.00
No. 2 red clover, cwt., 40.00 to 45.00

WHOLESALE SUGAR PRICES.

Wholesale quotations for the retail trade on Canadian refined sugar, Toronto:

Acadia granulated, 100 lbs., \$10.75
St. Lawrence granulated, 100 lbs., 10.75
Atlantic granulated, 100 lbs., 10.75
Canada Refining, gran., 100 lbs., 10.75
Dominion granulated, 100 lbs., 10.75
Acadian yellow, No. 1 yellow, differential from granulated, 40c; No. 2 yellow, differential from granulated, 40c; No. 3 yellow, 60c.

Atlantic yellow, No. 1 yellow, differential from granulated, 20c; No. 2 yellow, differential from granulated, 20c; No. 3 yellow, differential from granulated, 20c.

Canada yellow, No. 1 yellow, differential, 40c; No. 2 yellow, 50c; No. 3 yellow, 60c.

HIDES AND WOOL.

Prices delivered in Toronto, furnished by John Hallam:

Butcher hides, green, flat, 18c; calfskins, green, flat, 15c; veal kip, 20c; horsehides, city take-off, 12c.

Country Markets—Beef hides, fat, cured, 15c to 20c; green, 15c to 17c; to be horsehair, farm No. 1 stock, 22c; hides, country take-off, No. 1, \$5 to \$7; No. 2, \$3 to \$5; No. 3 sheep skins, \$2.50 to \$3; horsehair, farm No. 2 stock, 20c.

Wool—Unwashed fleece wool as to quality, 40c to 55c. Washed wool, fine, 70c to 80c.

VIGOROUS UPTURN IN CORN MARKET

Germany's Acceptance of Allies' Provisioning Terms Is Bullish Influence.

Chicago, March 15.—Announcement that Germany had definitely accepted provisioning terms imposed by the allies, led to a vigorous upturn today in the corn market. Prices at the close were unsettled, but 1 1/2 to 3 1/4, net higher with May 1 1/4 to 1 3/4, and July 1 1/2 to 1 3/4.

At first, the corn market had a downward slant owing to reports that a minimum limit was likely to be placed on hog values. Some traders were unconvinced, however, by the fact that the hog market showed continued strength instead of an expected break. In the absence of any aggressive selling, corn soon began to rally. It was at this stage that news came of an allotment of 370,000 tons of foodstuffs a month to Germany in return for ships. Explicit statements that the German delegates had agreed to the plan made demand here for corn broaden out and forced prices to bulge. Shorts led the stampede, the effects of which still remained evident when the final gong struck. As follows: corn and rose smartly after a brief interval of weakness.

Provisions, like grain, swept upward despite hesitation at the outset. Shipments for the week were nearly treble those of a year ago.

MONTEAL GRAIN AND PRODUCE.

Montreal, March 15.—Only important change in price of oats has been an advance of 1c to 1 1/2c per bushel. No change in price of flour. Flour prices are steady. Market for rolled oats was dull. The market for flax closed 1/2 higher for both months. Flax closed 1/2 higher for May and 1/2 higher for July.

Oats—Man. spring wheat, 65c; extra No. 1 feed, 65c; No. 2 feed, 63c; No. 3 C.W., 61c; No. 4 C.W., 59c; No. 5 C.W., 57c.

Four—Man. spring wheat, 1 1/2 to 1 1/4.

Roller oats—Baga, 90 lbs., \$3.00 to \$4.00; Bran, 40 lbs., \$2.00 to \$3.00; Shorts, \$2.25.

Maize, 58c.

Hay—Per ton, car lots, \$24. Cheese—Finest easterns, 24c to 25c. Butter—Choice creamery, 67c to 68c. Eggs—Selected creamery, 67c to 68c. Potatoes—Per bag, car lots, \$1.75. Dressed hogs—Abattoir killed, \$25 to \$25.50.

Lard—Pure, wood rolls, 20 lbs., net, 24c to 25c.

CHICAGO MARKETS.

J. E. Bickell & Co., Standard Bank Building, report the following prices at the Chicago Board of Trade:

Corn—

Month	Open	High	Low	Close
Mar.	144 1/4	149	143 1/4	146 1/4
May	125	135 1/4	124 1/4	125 1/4
July	123 1/2	133	123 1/2	123 1/2

Oats—

Month	Open	High	Low	Close
Mar.	61	61	61	61
May	61 1/2	62 1/4	61 1/2	62 1/4
July	60 1/2	62 1/4	60 1/2	62 1/4

Pork—

Month	Open	High	Low	Close
Mar.	43.50	44.85	43.40	44.75
May	40.60	41.80	40.80	41.70
July	26.25	27.00	26.35	27.00

Lard—

Month	Open	High	Low	Close
Mar.	23.90	24.75	23.87	24.67
July	23.90	24.75	23.87	24.67

EAST BUFFALO LIVE STOCK.

East Buffalo March 15.—Cattle receipts 500, slow. Calves, receipts 200, steady; \$5 to \$19.50. Hogs, receipts 2400, steady; heavy and mixed \$20 to \$20.15; Yorkers, \$19.75 to \$20; 165-lb. Yorkers and pigs, \$18.75 to \$19; roughs, \$16.50 to \$17; stage, \$12 to \$14. Sheep and lambs, receipts 2000; steady and unchanged.

WINNIPEG CATTLE MARKET.

Winnipeg, March 15.—Receipts at the Union Stock Yards today were 158 calves and 420 hogs. Hogs and cattle were steady at Friday's quotations.

ODD-LOT MARKET

Dealings in on Saturday

Odd-lot trade Saturday's volume fewer than a total of 0 mining stock

Barcelona and old transatlantic

The course of difference in the firm despite variation in the Barcelona, shares, led in at from the latter from Friday's firm at from were almost lot of Steel

61 1-4, a p... and N. S. S... 52. Canada... divided \$1... 101 7-8, equ... dead quotat... common firm... and the pref... at 81 1-2. Railway sold... Friday's low... up 1-2 to \$4... was down 2... changed at 6... Trading in... most entirely... 1933 issues... changed hand... she forms... 104 1-2-2... loans amount

UNION BAN... ADV

The annou... morning from... Union Bank, v... vitory comm... British Colum... W. H. Ma... rector of the... man, and the... are, George... manager of th... of Electric Rai... E. Wilson o... rector of P... fed.

The bank... office and the... committee w... assistance in... of the busin... Pacific coast

NEW

New York, condition of... and trust co... shows that... serve in exc... This is an in... last week. A... Actual con... etc., increase... own vaults, a... banks incre... federal bank... crease \$24.54... value, state... panies, incre... depositaries, companies, d... demand for... 000; net t r m... 786,000; circ... 000; aggrega... credit reser... \$8,272,440.

MILLING IN MI... IN MI

Asbestos Strength

Montreal, 3... feature to th... curities on S... and continue... and continu... list was irreg... irregular tra... Asbestos co... Railway, the... and the close... of 1/2. Man... were the new... milling stocks... line of 1/2 and... line of one of... tion of Can... Steel of Can... Bonds were... and Vancouver... higher at 86... again the m... close at 10 1/2... Total busin... parsons for... year ago; Shares... do. untr... Bonds...

OY

Indicatio... about d... appears... Compa... marked... made w... T... M... th... HA... Private... WIL

ABBAGE LEMONS... MARKET... RECEIPTS... CATTLE... RECEIPTS... MARKET...

ODD-LOT TRADING MARKET FEATURE

Dealings in Toronto Exchange on Saturday Are Widely Scattered.

Odd-lot trading was the mainstay of Saturday's well scattered dealings, no fewer than 153 issues contributing to a total of only 753 shares outside of mining stocks, and as only two issues, Barcelona and Consolidated Smelting, did transactions run into three figures. The course of prices carried little significance, and the general tone might be described as steady rather than firm despite another bullish demonstration in specialties in New York.

COBALT SHIPMENTS

In point of mines shipping ore from the Cobalt camp last week, the list is confined to three companies, but the total tonnage is above the average, to wit: 433,307 pounds, according to official information received Saturday morning by Hamilton B. Wills, of the Wills Building, over his private, direct wire from Cobalt. Coniagas is the heaviest shipper with three cars containing 235,000 pounds, while Buffalo is next in line with two cars, 161,234 pounds, and that regular shipper of all, McKinley-Darragh, again represented with a car of 35,973 pounds. The Coniagas shipment was made direct to its own smelter at St. Charles, while the others were sent to Marmora.

Nipissing made its first bullion shipment in about a month and is one of the largest consignments of silver made from the Cobalt camp in many months, to wit: 775 bars, estimated as containing 100,237.81 ounces of silver. O'Brien and Dominion Reduction also made bullion shipments, but no definite figures are given.

NEW YORK STOCKS MAKE FRESH GAIN

Rails and U. S. Steel Are the Only Noteworthy Issues to Lag.

New York, March 24.—The short session on the stock exchange today opened with another spirited forward movement, shipping and industrial in several important instances adding materially to gains of recent days.

TEN-FOOT ORE SHOOT ON OPHIR IS RICH

Hamilton B. Wills received the following over his direct Cobalt wire on Saturday: The Nipissing find on Ophir is by far the most important discovery that has been made there.

WASAPIKA ENJOYING FAVOR IN NEW YORK

Wasapika made a new high level on Saturday with sales up to 50 and considerable stock was in demand at slightly above that price. Private advices from the mine are even more favorable than those given out by the officials of the company.

KERR LAKE'S OUTPUT

Cobalt, March 15.—During the month of February the Kerr Lake mine produced an average of approximately \$3400 every twenty-four hours.

UNLISTED STOCKS

Supplied by Heron & Co. Abitibi Power com. 65 84 do. preferred 84 94

Record of Saturday's Markets

TORONTO STOCKS. STANDARD STOCK EXCHANGE.

Table of Toronto Stocks and Standard Stock Exchange. Columns include Stock Name, Bid, Ask, and Price.

STANDARD SALES

Table of Standard Sales. Columns include Gold, Op. High, Low, Cl. Sales.

NEW YORK STOCKS

Table of New York Stocks. Columns include Stock Name, Bid, Ask, and Price.

TORONTO SALES

Table of Toronto Sales. Columns include Stock Name, Bid, Ask, and Price.

MONTREAL STOCK EXCHANGE

Table of Montreal Stock Exchange. Columns include Stock Name, Bid, Ask, and Price.

NEW YORK CURE

Table of New York Cure. Columns include Stock Name, Bid, Ask, and Price.

NEW YORK COTTON

Table of New York Cotton. Columns include Stock Name, Bid, Ask, and Price.

FRESH GAINS IN MINING MARKET

Wasapika Sells at Highest Point of Year—Davidson Holds Advance.

Activity and firmness marked trading on the Standard Exchange on Saturday morning, transactions for the two hours exceeding 125,000 shares with the general tendency toward slightly higher levels in the gold group.

STANDARD SALES

Table of Standard Sales. Columns include Gold, Op. High, Low, Cl. Sales.

NEW YORK STOCKS

Table of New York Stocks. Columns include Stock Name, Bid, Ask, and Price.

TORONTO SALES

Table of Toronto Sales. Columns include Stock Name, Bid, Ask, and Price.

MONTREAL STOCK EXCHANGE

Table of Montreal Stock Exchange. Columns include Stock Name, Bid, Ask, and Price.

NEW YORK CURE

Table of New York Cure. Columns include Stock Name, Bid, Ask, and Price.

NEW YORK COTTON

Table of New York Cotton. Columns include Stock Name, Bid, Ask, and Price.

THE ATLAS GOLD MINES, Limited

(No Personal Liability) PAR VALUE, \$1.00 PER SHARE. Authorized Capital - - \$2,000,000 \$900,000 Reserved for the Treasury

In the Rand, \$5,000,000.00 or more is required to make a producing mine, and dividends are usually 10 years after work begins. The auriferous "reef" is nearly 5000 feet below the surface. Time and money are saved when values begin at the surface, as on the "ATLAS."

In all low-grade mines there must be a heavy expenditure for reduction works, because a large tonnage must be treated and every modern device employed to save the last grain of the gold.

On one gold mine in Alaska, total costs per ton were brought down to 80 cents, but, according to the last report, profits were only 12 cents per ton.

Putting millions into this property was a reckless venture, for at best the profit did not justify the expenditure, and besides it was liable to be wiped out either by rising costs through war or lower gold contents in the ore. There was not sufficient margin of profit.

A handsome profit with a small plant, and the initial cash required for development is comparatively small.

What is even more important to shareholders is the fact that the percentage of profit is unusually large.

At the "ATLAS" there is auriferous quartz of several generations. In other words, gold was deposited several times. The ore is very rich. It was shown at the National Exhibition in Toronto in 1917 and it was specially dealt with in the Canadian Mining Journal on September 4, 1918.

Our prospectus has a facsimile of the ore as it appeared in the journal.

Send for a copy. We are selling a limited number of shares at 25 cents. Wire, phone, call or write us or your own broker.

J. P. CANNON & CO., (Members Standard Stock Exchange) 56 KING STREET WEST, TORONTO. Phone Adelaide 3342-3343.

UNLISTED ISSUES WANTED

Imperial Oil, Abitibi Pulp, Black Lake preferred, Canada Machinery, Trusts and Guarantees, Sterling Bank, Standard Reliance, Canadian Westinghouse.

HERON & CO. Members Toronto Stock Exchange, 4 Colborne St., Toronto.

THE DE LUXE OF THE CANADIAN GOLD MINING CAMPS, The "NORTH DAVIDSON"

Get our special letter and full information on this coming producer. Send for Our Market Letter.

L. G. HARRIS & CO., 1601 Royal Bank Bldg.

FOR INFORMATION ON The Associated Gold Fields Mining Co. Limited.

WRITE, PHONE, OR CALL FOR PARTICULARS. 504 Standard Bank Building, Toronto, Ont.

WATCH DAVIDSON DEVELOPMENTS

We are reliably informed that a statement of premier importance will shortly be issued by the Davidson Management.

The Directors of the Davidson are now on the property at Porcupine, amassing first-hand information with regard to the discovery made several days ago. We are in a position to realize how the news of the find will affect the stock and to this end strongly advise our clients to add to their holdings, and investors to purchase Davidson stock NOW.

WE BELIEVE IF INVESTORS DELAY NOW, DAVIDSON CAN ONLY BE BOUGHT LATER AT A MUCH HIGHER PRICE.

F. C. SUTHERLAND & CO. STOCK BROKERS, 12 King Street East, Toronto, Ont.

Name _____ w Address _____

MILLING STOCKS SAG IN MONTREAL MARKET

Asbestos Issues Again Show Strength—Some Irregularity in Bonds.

Montreal, March 15.—There was little feature to the market for Canadian securities on Saturday, outside of a decline in the milling stocks traded in, and continued strength shown by the asbestos issues. The remainder of the list was irregular, bonds also showing an irregular trend.

Asbestos common was next to Quebec Railway, the most active listed stock, and the close at 55 showed a net gain of 1/2. Maple Leaf and St. Lawrence were the only representatives of the milling stocks, the former showing a decline of 1/4 at 140, and the latter a decline of 1/2 at 110.

Bonds were irregular, stronger issues including the 1922 Victory 3/4 up to 100%, higher at 85. The 1932 Victory 3/4 up to 100% against the most active bond, but the 1922 Victory 3/4 showed a net loss of 1/4.

Total business for the day with comparisons for the corresponding day a year ago:

Table with columns: Shares, Bonds, Prev. Year.

Company earnings, as well as physical mine conditions, show marked improvement. Spectacularly rich discoveries are being made with marked regularity in both camps.

THE STOCKS TO BUY

My Market Despatch contains latest information on the most active issues. Sent free upon request.

HAMILTON B. WILLS

Private direct wire to Porcupine, Cobalt, and New York Curb. WILLS BUILDING, 90 BAY ST. Telephone Adel. 3680

Telephone Main 7841

1898---TWENTY-FIRST ANNIVERSARY, COMING-OF-AGE YEAR---1919

Market Adelaide 6100

SIMPSON'S 21st Anniversary Sale

Only three days more of the Anniversary Sale. Today starts a three-day whirlwind finish, with an unusually attractive programme. Seasonable, dependable merchandise at savings seldom offered so early in the season.

Our Monday Basement Sales are events looked forward to by thrifty buyers, and the Anniversary Sale today will be of more than usual importance.

35c White Flannelette at 28c A Timely Event for Special Selling Today

White Saxony Flannelette—Evenly napped and of splendid quality. 33 inches wide. 35c yard. Anniversary Sale, yard 28c.

Semi-Bleached Union Damask in check and floral designs. 60 inches wide. Regularly \$1.00. Anniversary Sale, yard 69c.

Satin Damask Table Cloths of fine even texture. Beautifully finished. Choice assortment of designs. Size 2 x 2 yards. Anniversary Sale, \$3.69.

Circular Pillow Cotton, linen finished and of heavy quality. 44 inches wide. Regularly 60c. Anniversary Sale, yard 47c.

Irish Linen Crash Towelling, with tape border. For roller or tea towels. 17 inches wide. 1,000 yards clearing in the Anniversary Sale, yard 29c.

White Marcelles Bedspreads, heavy weight, in floral and conventional designs. Size 72 x 90 inches. Straight hems or with cut corners. Anniversary Sale, \$4.95.

Simpson's—Fourth Floor.

Special! Women's and Misses' Spring Coats Today

Two Enticing Values in Misses' Practical Tweed Coats

At \$15.00—Regular \$22.50 styles in light grey or tan donegal tweeds. Pleated or plain backs, finished with trig strappings and belts.

At \$22.50—Regular \$32.50 coats in grey and heather mixtures, as smart as they are serviceable. Jaunty button trimmed and silk lined to waist.

EXTRA VALUE IN

Misses' \$37.50 Suits, \$32.50

Stunning styles developed in excellent materials and offered at a price to make 8.20 shopping worth while.

Jaunty box coated models, with Byrnie vests, semi-box styles, with silk braid trimming and strictly tailored designs.

Men's wear serges, and wool poplins in navy, tan, green, taupe, sand and black. Anniversary Sale, \$22.50.

Women's Smart Suits Today at \$26.50

Regular Values to \$35.00

Developed from wool serges in a host of the new season's popular styles.

Strictly tailored with braid and button trimming.

Semi-fitted or box designs with contrasting vesties and overcollars.

Colors navy, sand, green, brown or black. Anniversary Sale, \$26.50.

Other suits in stunning styles priced \$42.00 to \$48.00.



This \$6.50 Cashmere Dress for \$2.95

One of the Most Wonderful Offers of the Season for Today

As illustrated—pretty little frocks of fine cashmere (wool union). Lined in waist and sleeves. Yoke daintily smocked and collar of white silk poplin. Dark cardinal or mid brown. Sizes 2 to 5 years. Anniversary Sale, \$2.95.

CHILDREN'S RED REEFER COATS FOR SPRING—Made of cosy wool cheviot serge. Reversible double-breasted front—lapel collars finished with black velvet—anchor brass buttons—chlo pockets. Sizes 2 to 6 years. Remarkable value in the Anniversary Sale, \$6.50.

INFANTS' LONG SKIRTS of excellent quality white nainsook. Attached waist of self and deep hem daintily pintucked. Length 27 inches. Regularly \$1.00. Anniversary Sale 50c.

Simpson's—Third Floor.

Anniversary Specials Today in Simpson Quality Silks

Famous for More Than 20 Years

DUCHESSE SATIN, well known for its quality and rich appearance. 36 inches wide. Street and evening shades. Regularly \$2.95. Anniversary Sale, \$2.69 yard.

\$3.50 Black Silks on Sale Today at \$2.95

Splendid values in heavy Black crepe de Chine, Dress and Suiting Satins—three different finishes in Chiffon Taffetas and many other weaves. Anniversary Sale, \$2.95 yard.

AMERICAN SILK CREPE GEORGETTES, including "Mallinson's" Indestructible qualities. Three shades of navy, copen, French and Belgian blue—six shades in grey and taupe, new browns and greens and past-

tel colorings. Anniversary Sale, \$2.50 yard. YARD WIDE "SCHIZEN" HABUTAI SILKS, in a host of shades and ivory. \$1.25 quality. Anniversary Sale, 98c yard.

NATURAL SHANTUNG PONGEE; wear guaranteed. Regular \$1.25 heavy weight qualities at 98c yard. 1,000 yards of our \$1.00 quality at 79c yard.

Simpson's—Second Floor.

Noteworthy Dress Goods Items

Continuing the Sale, Wool Jersey at \$5.25 Yard

Augmented by the addition of new shades in dust, new blue, pekin, sand, brown, purple, copen, rose, etc. Finest grade wool cloth; 54 inches wide. Regularly \$6.50. Anniversary Sale, yard \$5.25.

Coating Tweeds in the real Donegal mixtures, so popular for sports and motor coats. New arrivals in higher grades; 54 inches wide; \$4.00 and \$4.50 qualities. Anniversary Sale, yard \$3.50.

Silk and Wool Poplins—Such charming new spring fabrics as faille poplins and bengaline, crepe-ondule, cords, etc. Values up to \$5.00. Full range of wanted shades; 40 inches wide. Anniversary Sale, yard \$3.50.

Fine Botany Serge of unusual quality; 50 inches wide, and soap shrunk. Navy, black, brown, copen, taupe and green; \$4.00 value. Anniversary Sale, yard \$2.45.

3,000 Yards Silk Poplin, \$1.38 Yard

A shipment of guaranteed high-grade qualities, usually sold at \$1.69. Full color range with navys and black. 36 inches wide. Anniversary Sale, yard \$1.38. Simpson's—Second Floor.



MILLINERY

The Latest Arrivals in New York Hats

REPRESENT THE AUTHENTIC SPRING MESSAGE OF THE MASTER MODISTES OF MILLINERY, AND ARE CHARMING TO AN UNLIMITED DEGREE.

Tailored Hats from Rawak, Moorehead and Jardine, and Bruck-Welas—unique of line, and simply but stunningly trimmed. Restaurant, tea and dress hats from Farrington and Evans—in the large droop, rolling brim and directoire poke designs that radiate spring from their flowery crowns and trimmings or brightly colored facings. As becoming as they are fascinating, and priced from \$2.00 to \$35.00.

More New "Riviera" Hats

Hats that tell with authority of the latest, most distinctive modes in tailored millinery have arrived in the "Riviera" Hat Section, and will be shown for the first time today. Priced \$15.00, \$16.50 and \$17.50.

Simpson's—Second Floor.

New Spring Suits

\$25 Special

FOR MEN AND YOUNG MEN

Developed in smooth finished worsted, showing a neat grey mixed pin check, with colored stripe. Stylish three-button, single-breasted model—well lined and carefully tailored to fit comfortably. Sizes 36 to 42. Anniversary Sale, \$25.00.



\$1.00 Underwear, 50c

Small Men's Sizes Only.

Shirts and drawers—medium weight for present wear. Natural shade—soft, smooth, even thread. Fine elastic ribbed cuffs and ankles. Sizes 32, 34, 36 only. Regularly \$1.00. Anniversary Sale, garment 50c.

Men's \$1.00 Nightshirts at 59c

Of good quality white cotton muslin. Collar attached—and one pocket—full-sized bodies—strongly sewn. Sizes 14 to 18. Regularly \$1.00. Anniversary Sale, 59c.

Boys' \$1.25 Shirts at 89c

A maker closed them out to us at a saving. Negligee coat style, with soft double French cuffs—separate collar to match. A large assortment of patterns and stripes—full-sized bodies. Sizes 12 to 14. Regularly \$1.25. Anniversary Sale, each 89c.

Simpson's—Main Floor.

3,000 Yards Brocade Coat Linings 64c

From our regular high-grade stock of woven and printed satin finished satons. Mostly 40 inches wide. Every spring shade. Regularly 75c, 85c and \$1.00. Anniversary Sale, yard 64c.

Simpson's—Second Floor.

French Pastries of Surprising Quality

French Crullers, Napoleon Slices, Turnovers, Chocolate Eclairs, Cream Puffs, Cherry Baskets, Charlotte Russe.

Also pound and fancy cakes, crullers, doughnuts, coffee rings, etc., on sale daily after 10.30 a.m., sixth floor, at east entrance to Palm Room.

Women's \$1.75 Nightgowns Today 95c

Made of soft white cotton in attractive slip-over styles. Yokes of lace and Swiss embroidery. Anniversary Sale, 95c.

95c Work Aprons, 49c

Neat styles in strong checked gingham. Extra wide bib, extending over the shoulders and pocket. Regularly 95c. Anniversary Sale, 49c.

50c White Cotton Drawers, 39c

Well made, and finished with frill of self, daintily pintucked. Both styles. Regularly 50c. Anniversary Sale 39c.

D. & A. Corsets, \$1.25

New average figure models in white coutil, with medium bust and long free-fitting hips. Tearproof reinforcement and 4 strong elastic hose supporters. Sizes 19 to 26. Anniversary Sale, \$1.25.

Women's Spring Vests, 35c

Ribbed cotton, with low neck and short sleeves. Some have lace yokes. Anniversary Sale, 35c.

Women's Combinations, 69c

Ribbed cotton, with low neck and no sleeves. Umbrella or tight-knee drawers. Anniversary Sale, 69c.

Simpson's—Third Floor.

Men's \$11 and \$12 Boots at \$6.95

No Phone, Mail or C.O.D. Orders on Sale Footwear.

The styles, shades and sizes are everything one could wish. The qualities are above criticism, and up to the mark in every detail. Havana brown, mahogany calf, gunmetal and black kangaroo, black kid and patent leathers. Blucher and straight lace boots, with English recede toe. Wide and medium last. Regularly \$11.00 and \$12.00. Anniversary Sale, \$6.95.

Men's \$4.00 Boots at \$2.75

Gunmetal blucher boots on good fitting lasts. Wide toe, medium weight. McKay sewn soles, military heels. Sizes 6 to 10. Regularly \$4.00. Anniversary Sale, \$2.75.

Women's \$9.00 to \$12.00 Boots at \$6.45

Hart samples, Queen Quality, and many other high-grade boots. Button and lace styles, with nine and ten-inch tops, brown and grey suede, brown, black and ivory kids, brown calf and several cows or cloth. Artistically blended, with plain and fancy vamps and patent coll, and imitation tips. Goodyear welt and flexible McKay sewn soles, low walking, Cuban and Spanish heels. Widths AA to D. All sizes, 2 1/2 to 7 in the last. Regularly \$9.00 to \$12.00. Anniversary Sale, \$6.45.

Women's Patent Leather and Kid Pumps, \$3.95

For spring wear, 350 pairs. Sizes 2 1/2 to 7. Long plain toe, medium and Spanish leather heels. Also kid lace oxfords, with imitation tip. Anniversary Sale, \$3.95.

POLISH SPECIALS—Ralston's Brown Liquid Cleaner, 10c. Large tin Aretto Dubbin, 10c. Insoles, Corticine or Luffer, 10c.

Simpson's—Second Floor.

The Robert SIMPSON Company Limited

Half-Price Finale in Drugs and Toilets

A Wonderful Offering of Household Preparations at Two for the Price of One—The Quantities Are Limited, So Early Shopping Is Advisable.

- Castor Oil Capsules (12 in box, half teaspoonful) Regularly 25c. Sale price, 2 for 15c.
Glycerine Suppositories (12 in box). Regular 25c. Sale price, 2 for 25c.
Soluble Elastic Capsules, Blood, Eastern Syrup, Hypophosphites, etc. (100 in box). Regularly 75c. Sale price, 35c.
Universal Lintment, Regular 25c. Special, 2 for 25c.
Eye Salve (for inflamed lids). Regular 15c. Special, 2 for 15c.
Zinc Ointment, Regular 25c. Special, 2 for 25c.
Antiseptic Healing Salve, Regular 15c. Special, 2 for 25c.
Jamaica Ginger Compound (for flatulency, etc.) Regular 25c. Special, 2 for 25c.
Kidney Compound, large bottle. Regular \$1.00. Special, 2 for \$1.00.
Sustaining Bandage, Regular 50c. Special, 25c.
Headache Wafers, Regular 25c. Special, 15c.
Ladle Laxatives (50 in bottle). Regular 15c. Special, 15c.
Salubrious Powder, Regular 15c. Special, 1 for 10c.
Antipain Tablets (100 in bottle), for headache. Regular 50c. Special, 25c.
Blanco (for white shoes). Regular 15c. Special, 2 for 15c.
Emulsion of Cod Liver Oil, Regular 45c. for 25c.
Emulsion of Vitamin, Regular 10c. Special, 2 for 10c.
Violet Talcum Powder, Regular 21c. Special, 2 for 21c.
Boric Acid, Regular 15c. Special, 2 for 15c.
Tooth Paste, Regular 25c. Special, 15c.
Epsom Salts, Regular 10c. Special, 2 for 10c.
TOILET GOODS AT SPECIAL PRICES.
Ivory Soap, large cake, 2 for 25c. Lifebuoy Soap, 2 cakes, 25c.
Whitewash Soap, Regular 10c. Special, 2 for 25c.
Pear's Palmers' Earth, 15c. Pear's Toilet Powder, 15c. Assorted Toilet Creams. Regular 25c. Special, 15c.
C. SIMPSON DRUG STORE Simpson's—Main Floor.

PROBS TA GOVERN FAVOR TO P One Man em HOUS Cheap Ex Pro Yesterday's fure was ch stpands of and a discu returned sol possibly la d The first Ella, former pick of the both hands, by occupying \$4000 and th premier kept ment" sliper insisted upon not recede fr give the an Mr. Ellis. M for a divisio The other Dane, who r Poch-Bah of of his officu gramme is longer than lodge, and m cess measur from tip to t rope mousta ed as one of of the annua records in Tontario. The whole outfit, tonorial, is The mix-ur returned sol misunderstanding provincial go \$50,000 from plant as 72 le of workmen' of workmen' \$8000 per hou ed some sig upon the sol vices, and proposed a p to each hou diers, their mothers. An entire housin limited by le and how ma be applied to rule of the p for \$50,000, pletely failed, the work beln derstand who In the combu its third read will be ready to companies be Fred Hon. G. Ho ing a questio paper in the foot, said M loan commis the work beln Ontario. The list of his d settlers, look cheese factori so government Northern Onta as well as a committee of board. He i diers' and s scheme at Kay ber of the IR 26, 1919. (Wit is by no mea cial in charge record in cov general's offi He receives annum. The sum of to settlers by \$35,517 in 1918 Mr. Proudfo to amend the fairs act, offer the appointme wa-, to the d under the hou Ontario I lected to the sense of infor salary proposo lected in prin consideration for under the (Concluded) TRANSATL NOW BE London, Ma among alimve the Atlantic d tempted by named Fontar is reported to French Africa gambria, for way of the C way of the St. Paul, UKRAINIAN London, Man entered P wireless despat The Ukrainian of Lemberg, an sal-Lemberg im dately stopped.