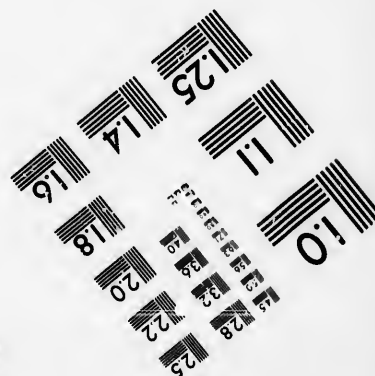
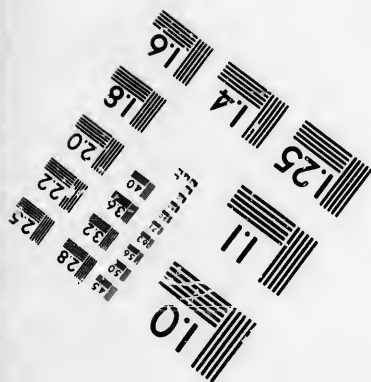
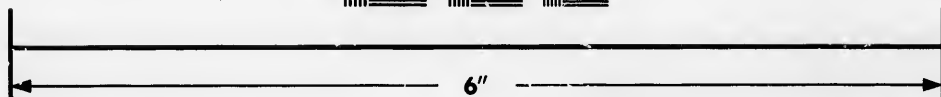
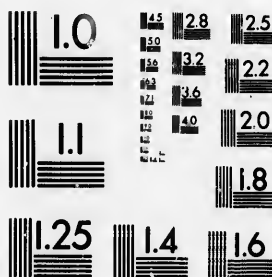


**IMAGE EVALUATION  
TEST TARGET (MT-3)**



**Photographic  
Sciences  
Corporation**

23 WEST MAIN STREET  
WEBSTER, N.Y. 14580  
(716) 872-4503

13 18 22 25  
14 19 20 21  
15 16 17 23  
18 19 20 21

**CIHM/ICMH  
Microfiche  
Series.**

**CIHM/ICMH  
Collection de  
microfiches.**



Canadian Institute for Historical Microreproductions / Institut canadien de microreproductions historiques

10  
11  
12  
13  
14  
15  
16  
17  
18  
19  
20  
21  
22  
23  
24  
25

**© 1985**

Technical and Bibliographic Notes/Notes techniques et bibliographiques

The Institute has attempted to obtain the best original copy available for filming. Features of this copy which may be bibliographically unique, which may alter any of the images in the reproduction, or which may significantly change the usual method of filming, are checked below.

L'Institut a microfilmé le meilleur exemplaire qu'il lui e été possible de se procurer. Les détails de cet exemplaire qui sont peut-être uniques du point de vue bibliographique, qui peuvent modifier une image reproduite, ou qui peuvent exiger une modification dans la méthode normale de filmage sont indiqués ci-dessous.

- |  |  |
|--|--|
| <input type="checkbox"/> Coloured covers/<br>Couverture de couleur   | <input type="checkbox"/> Coloured pages/<br>Pages de couleur   |
| <input type="checkbox"/> Covers damaged/<br>Couverture endommagée  | <input type="checkbox"/> Pages damaged/<br>Pages endommagées   |
| <input type="checkbox"/> Covers restored and/or laminated/<br>Couverture restaurée et/ou pelliculée  | <input type="checkbox"/> Pages restored and/or laminated/<br>Pages restaurées et/ou pelliculées  |
| <input type="checkbox"/> Cover title missing/<br>Le titre de couverture manque   | <input checked="" type="checkbox"/> Pages discoloured, stained or foxed/<br>Pages décolorées, tachetées ou piquées   |
| <input type="checkbox"/> Coloured maps/<br>Cartes géographiques en couleur   | <input type="checkbox"/> Pages detached/<br>Pages détachées  |
| <input type="checkbox"/> Coloured ink (i.e. other than blue or black)/<br>Encre de couleur (i.e. autre que bleue ou noire)   | <input checked="" type="checkbox"/> Showthrough/<br>Transparence   |
| <input type="checkbox"/> Coloured plates and/or illustrations/<br>Planches et/ou illustrations en couleur  | <input type="checkbox"/> Quality of print varies/<br>Qualité inégale de l'impression   |
| <input type="checkbox"/> Bound with other material/<br>Relié avec d'autres documents   | <input type="checkbox"/> Includes supplementary material/<br>Comprend du matériel supplémentaire   |
| <input type="checkbox"/> Tight binding may cause shadows or distortion<br>along interior margin/<br>La reliure serrée peut causer de l'ombre ou de la<br>distorsion le long de la marge intérieure   | <input type="checkbox"/> Only edition available/<br>Seule édition disponible   |
| <input type="checkbox"/> Blank leaves added during restoration may<br>appear within the text. Whenever possible, these<br>have been omitted from filming/<br>il se peut que certaines pages blanches ajoutées<br>lors d'une restauration apparaissent dans le texte,<br>mais, lorsque cela était possible, ces pages n'ont<br>pas été filmées. | <input type="checkbox"/> Pages wholly or partially obscured by errata<br>slips, tissues, etc., have been refilmed to<br>ensure the best possible image/<br>Les pages totalement ou partiellement<br>obscurcies par un feuillet d'errata, une pelure,<br>etc., ont été filmées à nouveau de façon à<br>obtenir la meilleure image possible. |
| <input checked="" type="checkbox"/> Additional comments:<br>Commentaires supplémentaires:  | [Printed ephemera] 1 sheet (verso blank)   |

This item is filmed at the reduction ratio checked below/  
Ce document est filmé au taux de réduction indiqué ci-dessous.

10X	14X	18X	22X	26X	30X
<input type="checkbox"/>	<input type="checkbox"/>	<input type="checkbox"/>	<input checked="" type="checkbox"/>	<input type="checkbox"/>	<input type="checkbox"/>
12X	16X	20X	24X	28X	32X

The copy filmed here has been reproduced thanks to the generosity of:

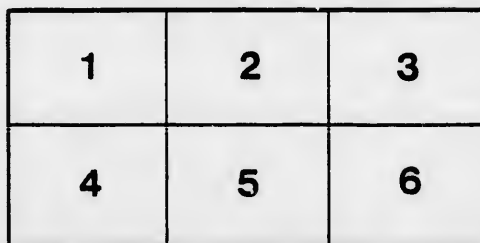
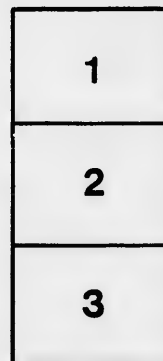
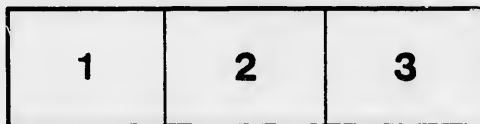
D. B. Weldon Library  
University of Western Ontario  
(Regional History Room)

The images appearing here are the best quality possible considering the condition and legibility of the original copy and in keeping with the filming contract specifications.

Original copies in printed paper covers are filmed beginning with the front cover and ending on the last page with a printed or illustrated impression, or the back cover when appropriate. All other original copies are filmed beginning on the first page with a printed or illustrated impression, and ending on the last page with a printed or illustrated impression.

The last recorded frame on each microfiche sheet contains the symbol  $\rightarrow$  (meaning "CONTINUED"), or the symbol  $\nabla$  (meaning "END"), whichever applies.

Maps, plates, charts, etc., may be filmed at different reduction ratios. Those too large to be entirely included in one exposure are filmed beginning in the upper left hand corner, left to right and top to bottom, as many frames as required. The following diagrams illustrate the method:



L'exemplaire filmé fut reproduit grâce à la générosité de:

D. B. Weldon Library  
University of Western Ontario  
(Regional History Room)

Les images suivantes ont été reproduites avec le plus grand soin, compte tenu de la condition et de la netteté de l'exemplaire filmé, et en conformité avec les conditions du contrat de filmage.

Les exemplaires originaux dont la couverture en papier est imprimée sont filmés en commençant par le premier plat et en terminant soit par la dernière page qui comporte une empreinte d'impression ou d'illustration, soit par le second plat, selon le cas. Tous les autres exemplaires originaux sont filmés en commençant par la première page qui comporte une empreinte d'impression ou d'illustration et en terminant par la dernière page qui comporte une telle empreinte.

Un des symboles suivants apparaîtra sur la dernière image de chaque microfiche, selon le cas: le symbole  $\rightarrow$  signifie "A SUIVRE", le symbole  $\nabla$  signifie "FIN".

Les cartes, planches, tableaux, etc., peuvent être filmés à des taux de réduction différents. Lorsque le document est trop grand pour être reproduit en un seul cliché, il est filmé à partir de l'angle supérieur gauche, de gauche à droite, et de haut en bas, en prenant le nombre d'images nécessaire. Les diagrammes suivants illustrent la méthode.

ails  
du  
odifier  
une  
image

rrata  
o

aelure,  
n à

32X

— THE —

# NEW HISTORICAL & ILLUSTRATED ATLAS OF COUNTY OF ELGIN.

— \* \* \* \* \*

## PUBLISHERS' CARD.

— \* \* \* \* \*

THE undersigned take this method of informing their patrons, and the citizens generally, that the new Atlas of the County of Elgin is at last completed and ready for delivery. The time and labor expended upon the publication many of you are familiar with, and we assure you that there has been no cheapening of the work in any of its parts, but from the original manuscript to the engravers pen, and from the lithographing to the finishing touches of the embossing press: *all* has passed through experienced hands.

We fully appreciate how justly we are indebted to the citizens of the County of Elgin who have courteously aided us in bringing to a successful completion this volume of maps and drawings; the most eminent men of the County giving us their confidence and support.

For this assistance we are truly grateful. Copies of the completed Atlas have been submitted to County officials and citizens for their critical inspection, and connected herewith will be found their estimate of its worth and corrections, as well as a few special notices from the local press. The delivery of the Atlas will commence on the 22nd, of the present month, and we trust there will be a cordial readiness on the part of our patrons to receive it.

H. R. PAGE, & CO.

## — TESTIMONIALS. —

We take pleasure in stating that we have examined a copy of the New Historical Atlas of the County of Elgin, now ready to issue to subscribers, and pronounce it to be a most thorough, complete and accurate map; highly creditable to the County and well deserving the patronage it has received. Messrs H. R. Page & Co. have faithfully fulfilled their pledges made to the citizens of the County of Elgin, nearly one year ago and the work cannot fail to give satisfaction, and is bound to be of great interest and usefulness to a large majority of our citizens. We believe that those who have ordered this splendid Atlas in advance of its publication, will fully appreciate the time and labor expended upon its production, and the truly artistic manner in which its numerous maps and lithographic views have been brought out. We doubt if there was ever a more extensive map published of a single County, and it can well be received upon its merits. We hope the publishers will meet with a kind and prompt response from their patrons.

Colin Macdougall, M. P. East Elgin. Colin Munro, Sheriff, County of Elgin. D. McLarty, M. D. Mayor, St. Thomas. A. McLachlin, Registrar of Elgin. William McKay, County Clerk, County of Elgin. Thos. D. Warren, Clerk County Court, and Deputy Clerk Crown, Elgin. Geo. Suffel, Warden of County. Jas. Stanton, County Crown Attorney, County of Elgin. John A. Kains, County Treasurer, County of Elgin. T. Williams St. Thomas. T. M. Nairn, Reeve, Aylmer. W. A. Glover, J. P. Aylmer. James Garret, Banker, Aylmer. J. M. Davis, Aylmer. P. W. McLay, M. D. Aylmer.

## OPINIONS OF THE PRESS.

We have seen a copy of the illustrated and historical Atlas of the County of Elgin, which was commenced a year since, and it gives us pleasure to say that the publishers have turned out an Atlas of our county which they may feel proud of, and which every subscriber will be glad to receive. The Atlas is filled with a great deal of important information in regard to our county, and every part is finished in the very best workmanlike manner. Many fine residences appear in the Atlas, among which may be mentioned those of Mr. Casey, M. P., near Fingal; of Mr. Dugald Ferguson, Southwold; of Mr. Nicol McColl, in the same township; of Mr. Conn, Trycnemel; the residences and pork packing building of Scott, Yorke & Marlatt, Aylmer; the residence of John Marr, Malahide; of Mr. Van Amburg, Malahide; of John McCallum, Dunwich; of J. M. Davis, Orwell and Aylmer; of Dr. McLay, Aylmer; the mill and residence of George L. Oill, Malahide; also the manufacturing establishment of Macpherson, Claxglow & Co., Fingal. All these mentioned, with a great many more, present a fine appearance. The Atlas is a work of great value to every subscriber and business man in the county, and its utility will be highly appreciated in every household.—*St. Thomas Journal.*

This Atlas which has been so long under preparation is now finished and bestows great credit upon the publishers. We have seen a simple copy of the Atlas, and it fills in every way the promises made to subscribers. The Atlas includes a map of Upper and Lower Canada, a fine map of Manitoba, a map of St. Thomas, coloured by wards, a map of Aylmer, Fingal, Wallacetown, Port Stanley and the smaller places. Each township is on a scale large enough for every property owners' name to be on his land. The Atlas also contains fine lithographic portraits of many of our prominent citizens, and views of many residences throughout the County, many interesting biographies appear of our business men and oldest settlers. All of the work is done in first class style, the work will be ready for general distribution in a few days and will be eagerly accepted by all the patrons.—*St. Thomas Times.*

We have had the privilege of examining the new Atlas of the County of Elgin, and we are heartily pleased with its appearance, and we venture to say it is the most complete work of the kind ever published in the Dominion. The publishers have been about a year working on the Atlas with a force of experienced men and every part of the work is finished in the most substantial manner. The Portraits and views are accurate and neat. \* \* \* *Aylmer Paper.*

