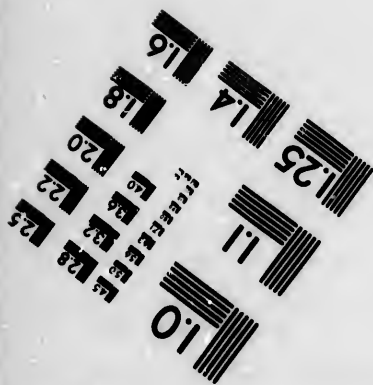
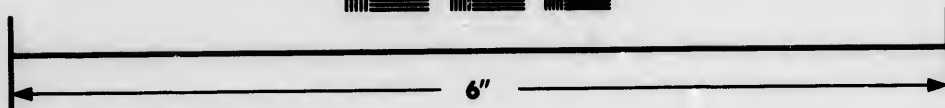
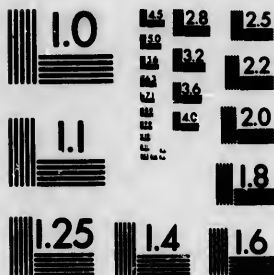


**IMAGE EVALUATION  
TEST TARGET (MT-3)**



**Photographic  
Sciences  
Corporation**

23 WEST MAIN STREET  
WEBSTER, N.Y. 14580  
(716) 872-4503

15  
16  
17  
18  
19  
20  
21  
22  
23  
24  
25

**CIHM/ICMH  
Microfiche  
Series.**

**CIHM/ICMH  
Collection de  
microfiches.**



**Canadian Institute for Historical Microreproductions / Institut canadien de microreproductions historiques**

10  
11  
12  
13  
14

**© 1985**

Technical and Bibliographic Notes/Notes techniques et bibliographiques

The Institute has attempted to obtain the best original copy available for filming. Features of this copy which may be bibliographically unique, which may alter any of the images in the reproduction, or which may significantly change the usual method of filming, are checked below.

L'Institut a microfilmé le meilleur exemplaire qu'il lui a été possible de se procurer. Les détails de cet exemplaire qui sont peut-être uniques du point de vue bibliographique, qui peuvent modifier une image reproduite, ou qui peuvent exiger une modification dans la méthode normale de filmage sont indiqués ci-dessous.

- Coloured covers/  
Couverture de couleur
- Covers damaged/  
Couverture endommagée
- Covers restored and/or laminated/  
Couverture restaurée et/ou pelliculée
- Cover title missing/  
Le titre de couverture manque
- Coloured maps/  
Cartes géographiques en couleur
- Coloured ink (i.e. other than blue or black)/  
Encre de couleur (i.e. autre que bleue ou noire)
- Coloured plates and/or illustrations/  
Planches et/ou illustrations en couleur
- Bound with other material/  
Relié avec d'autres documents
- Tight binding may cause shadows or distortion along interior margin/  
Le reliure serrée peut causer de l'ombre ou de la distorsion le long de la marge intérieure
- Blank leaves added during restoration may appear within the text. Whenever possible, these have been omitted from filming/  
Il se peut que certaines pages blanches ajoutées lors d'une restauration apparaissent dans le texte, mais, lorsque cela était possible, ces pages n'ont pas été filmées.
- Additional comments:/  
Commentaires supplémentaires:

- Coloured pages/  
Pages de couleur
- Pages damaged/  
Pages endommagées
- Pages restored and/or laminated/  
Pages restaurées et/ou pelliculées
- Pages discoloured, stained or foxed/  
Pages décolorées, tachetées ou piquées
- Pages detached/  
Pages détachées
- Showthrough/  
Transparence
- Quality of print varies/  
Qualité inégale de l'impression
- Includes supplementary material/  
Comprend du matériel supplémentaire
- Only edition available/  
Seule édition disponible
- Pages wholly or partially obscured by errata slips, tissues, etc., have been refilmed to ensure the best possible image/  
Les pages totalement ou partiellement obscurcies par un feuillet d'errata, une pelure, etc., ont été filmées à nouveau de façon à obtenir la meilleure image possible.

This item is filmed at the reduction ratio checked below/  
Ce document est filmé au taux de réduction indiqué ci-dessous.

10X	12X	14X	16X	18X	20X	22X	24X	26X	28X	30X	32X
				✓							

The to t  
The pos of t film  
Orig beg the sion othe first sion or il  
The shal TINU whic  
Map diffe entir begin right requ meth

The copy filmed here has been reproduced thanks to the generosity of:

Nova Scotia Public Archives

L'exemplaire filmé fut reproduit grâce à la générosité de:

Nova Scotia Public Archives

The images appearing here are the best quality possible considering the condition and legibility of the original copy and in keeping with the filming contract specifications.

Les images suivantes ont été reproduites avec le plus grand soin, compte tenu de la condition et de la netteté de l'exemplaire filmé, et en conformité avec les conditions du contrat de filmage.

Original copies in printed paper covers are filmed beginning with the front cover and ending on the last page with a printed or illustrated impression, or the back cover when appropriate. All other original copies are filmed beginning on the first page with a printed or illustrated impression, and ending on the last page with a printed or illustrated impression.

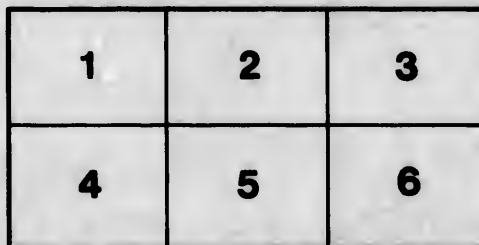
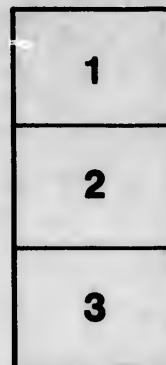
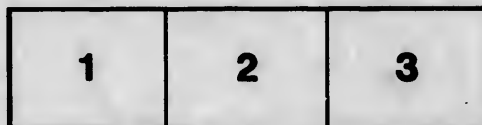
Les exemplaires originaux dont la couverture en papier est imprimée sont filmés en commençant par le premier plat et en terminant soit par la dernière page qui comporte une empreinte d'impression ou d'illustration, soit par le second plat, selon le cas. Tous les autres exemplaires originaux sont filmés en commençant par la première page qui comporte une empreinte d'impression ou d'illustration et en terminant par la dernière page qui comporte une telle empreinte.

The last recorded frame on each microfiche shall contain the symbol  $\rightarrow$  (meaning "CONTINUED"), or the symbol  $\nabla$  (meaning "END"), whichever applies.

Un des symboles suivants apparaîtra sur la dernière image de chaque microfiche, selon le cas: le symbole  $\rightarrow$  signifie "A SUIVRE", le symbole  $\nabla$  signifie "FIN".

Maps, plates, charts, etc., may be filmed at different reduction ratios. Those too large to be entirely included in one exposure are filmed beginning in the upper left hand corner, left to right and top to bottom, as many frames as required. The following diagrams illustrate the method:

Les cartes, planches, tableaux, etc., peuvent être filmés à des taux de réduction différents. Lorsque le document est trop grand pour être reproduit en un seul cliché, il est filmé à partir de l'angle supérieur gauche, de gauche à droite, et de haut en bas, en prenant le nombre d'images nécessaire. Les diagrammes suivants illustrent la méthode.



errata  
to

peure,  
on à



# NEWFOUNDLAND

## ALMANAC,

FOR THE YEAR OF OUR LORD

1847.

BEING THE TENTH YEAR OF HER MAJESTY'S REIGN.

COMPILED BY JOSEPH TEMPLEMAN

OF THE COLONIAL SECRETARY'S OFFICE.

### CONTENTS

	Page		Page
Calendarium for 1847	2	Naval	29
Eclipses	30 32	Post-office	30
Royal Family	33	Transatlantic Steam	30
Her Majesty's Ministers	34	Navigation	
Almanac	5 to 16	Savings Bank	31
Metereological Averages, &c	17 to 18	Commissioners of Public Boards	31 32
Reigning Sovereigns of Europe	19	Rates of Pilotage	32
Ditto of England, from Conquest	20	Tight Houses	33
Local Government		Officers in the several Electoral Districts	34 45
Civil Department	21 22	Charitable and other Institutions	46 48
Customs	23	Newspapers, Statistics, &c	49 55
Law Department	23 24	Governors of Nfld.	56
Chergy	25 27	Ditto of other Colonies	56
Military	29		

### ERRATUM

In making the calculations of the Moon's Changes, the Compiler regrets to find that in converting English time into Newfoundland time, he has inadvertently added, instead of deducting the difference between them—viz., 8h. 31m. The error is therefore *double*, and may be readily corrected by subtracting (which the reader is requested to do in each case) 7' hours and 2 minutes from the respective times given for every Moon—thus: the time of the *New Moon* in January is stated to be at 4h. 15m. A.M. on the 17th, whereas it should be on the 16th day at 9h. 15m. P.M.;—and the same throughout.

HENRY WINTON, PRINTER, ST. JOHN'S.

HALIFAX, N. S.

## PRELIMINARY NOTES.

Sunday Letter.....	C	Ascension Day (Holy
Golden Number.....	5	Thursday)..... May 14
Epact.....	14	Whit Sunday..... 23
Anno Mundi.....	5850	Trinity Sunday..... 30
Septuagesima Sunday	Jan. 31	Corpus Christi..... June 3
Ash Wednesday.....	Feb. 17	Queen's Accession..... 20
Good Friday.....	April 2	Prince of Wales Birthday Nov. 9
Easter Day.....	April 4	Advent Sunday..... 28
Queen's Birthday....	May 24	

## Explanatory Notices.

The "Meteorological Averages" heretofore inserted at the top of each page of the *Almanac* are now inserted in a concise table (at p. 17) and are to be understood as the *mean* of the Compiler's observations for a period of 11 *Years*—those for *England* being for 6 years.

In the "Chronological Calendar" the *events* printed in *Italics* are to be understood as *local*.

## Calendarium for 1847.

(Sundays in each month.)

February, March.	June.	Sept., Dec.	April, July.	January, October.	May.	August.
28	27	26	31	30	29	28
21	20	19	18	17	16	15
14	13	12	11	10	9	8
7	6	5	4	3	2	1

N.B. This table can easily be made available for finding the date of any other day of the week.

## Eclipses.

In the year 1847 there will be *four* eclipses, *two* of the Sun and *two* of the Moon.

I.—A partial Eclipse of the Moon on the 31st March, visible in Newfoundland as follows:—

Middle of the Eclipse..... 5.35 P.M.

Last contact with Shadow..... 6.38 "

Last contact with Penumbra..... 8.14 "


II.—A total Eclipse of the Sun on the 14th April, but not visible in this country.

III.—A partial Eclipse of the Moon on the 24th September, but not visible in this Island.

IV.—An Annular Eclipse of the Sun, but invisible in Newfoundland.

## St. John's.

Latitude ..... 47° 33' 22" North  
 Longitude (Meridian of Halifax) ..... 10° 52' 31" East.  
 Longitude (Meridian of Greenwich) ..... 52° 45' 29" West.  
 Magnetic Variation (1828) ..... 28° 44' 0" Westerly.



The Royal Family of Great Britain.

## THE QUEEN.

ALEXANDRINA VICTORIA, born May 24, 1819; married to Prince Albert Francis Augustus Charles Emanuel, of Saxe Coburg and Gotha, Feb. 10, 1840, and has issue:—1st. Victoria Adelaide Maria Louisa, Princess Royal of England, born 21st Nov., 1840; 2nd. Albert Edward, Prince of Wales and Duke of Cornwall, born 9th Nov., 1841; 3rd. Princess Alice Maude Mary, born 26th April, 1843; 4th. Alfred Ernest Albert, born 6th August, 1844; 5th. Princess Helena, born 25th May, 1846.

## THE QUEEN DOWAGER.

Adelaide Amelia Louisa Teresa Caroline, widow of King William IV., sister of the reigning Duke of Saxe Meiningen, born August 13, 1792.

## ROYAL PRINCES AND PRINCESSES.

Ernest Augustus (King of Hanover) Duke of Cumberland, born June 5, 1771; married May 29, 1815, to Frederica Carolina Sophia, daughter of the Duke of Mecklenburg Strelitz, and widow of Frederick William, Prince of Solms Braunfels, born March 2, 1778;—Issue, George Frederick, born May 27, 1819.

Adolphus Frederick, Duke of Cambridge, born Feb. 24, 1774; married May 7, 1818, to Augusta, Wilhelmina Louisa, daughter of the Landgrave of Hesse, born July 25, 1797;—Issue, George William, born March 26, 1819; Augusta Caroline, born July 19, 1822; married May, 1843, H.S.H. the Duke of Mecklenburgh Strelitz; Mary Adelaide, Nov. 27, 1833.

Mary, Duchess of Gloucester, born April 25, 1776.

## HER MAJESTY'S MOTHER.

Victoria Maria Louisa (Princess Dowager of Leinengen) Duchess of Kent, widow of Edward Duke of Kent, and sister of the King of the Belgians, born August 17, 1786.

## Her Majesty's Ministers.

First Lord of the Treasury.....	The Rt. Hon. Lord J. Russell.	
Lord Chancellor.....	Lord Cottenham.	
Chancellor of the Exchequer.....	Rt. Hon. Charles Wood.	
President of the Council.....	Marquis of Lansdowne.	
Privy Seal.....	Earl of Minto.	
Secretaries of State {	Home.....	Sir George Grey.
	Foreign.....	Viscount Palmerston.
	Colonies.....	Earl Grey.
First Lord of the Admiralty.....	Lord Auckland.	
Master General of the Ordnance...	Marquis of Anglesey.	
President of the Board of Control...	Sir John Hobhouse.	
President of the Board of Trade...	Earl of Clarendon.	
Secretary at War.....	Rt. Hon. Fox Maule.	
Treasurer of the Navy and Paymas- ter of the Forces.....	Rt. Hon. T. B. Macaulay.	
Field Marshal Com. the Forces...	Duke of Wellington.	

[The above form the Cabinet.]

Postmaster General.....	Marquis of Clanricarde.
Chancellor of the Duchy of Lancaster	Lord Campbell.
Woods and Forests.....	Viscount Morpeth.
Vice-president of the Board of Trade	Mr. Milner Gibson.
Master of the Mint.....	Rt. Hon. R. L. Shiel.
Secretary of the Admiralty.....	G. R. Ward, Esq.
Joint Secretaries of Treasury.....	{ Henry Tuffnell, Esq.
	{ John Parker, Esq.
Home Under Secretary.....	Sir W. Somerville.
Foreign ditto.....	Rt. Hon. E. J. Stanley.
Colonial ditto.....	Mr. B. Hawes.
Attorney General.....	John Jervis, Esq.
Solicitor General.....	David Dundas, Esq.
Judge Advocate General.....	Chas. Buller, Esq.
Lord Advocate of Scotland.....	Rt. Hon. A. Rutherford.

## THE QUEEN'S HOUSEHOLD.

Mistress of the Robes.....	Duchess of Sutherland.
Lord Chamberlain.....	Earl Spencer.
Lord Steward.....	Earl Fortescue.
Master of the Horse.....	Duke of Norfolk.

Lord Lieutenant of Ireland.....	Earl of Besborough.
Lord Chancellor.....	Rt. Hon. M. Brady.
Secretary for Ireland.....	Rt. Hon. H. Labouchere.



## January, 31 Days.

## THE MOON'S CHANGES.

Full Moon..... 1st day 6h. 13m. aft.  
 Last Quarter..... 9th " 10h. 11m. aft.  
 New Moon..... 17th " 4h. 15m. morn.  
 First Quarter..... 23rd " 7h. 48m. aft.  
 Full Moon..... 31st " 11h. 59m. morn.

Apogee..... 6th day, 9.30 aft.  
 Perigee..... 18th day, 6.30 aft.

DAYS.	SUNDAYS AND RE-MARKABLE DAYS.	SUN'S DE-CLINATION.	ASTRONOMICAL PHENOMENA AND ANNIVERSARIES OF HISTORICAL EVENTS.
F. 1	Circumcision	S 23. 2.22	1. 1st <i>Local Legislature met</i>
Sa. 2		22.57.18	1833.
S. 3	2d Sunday aft. Xmas	51.47	2. <i>Supreme Court met under present Charter, 1826.</i>
M. 4		45.49	
Tu. 5		39.24	4. Sun rises 7h. 54m.
W. 6	Epiphany, Old X-	32.32	5. Duke of York <i>d</i> 1827.
Th. 7	[mas day.	25.12	6. Twelfth day.
F. 8		17.27	7. Clock <i>bef.</i> Sun 6' 21".
Sa. 9		9.15	8. Sun rises 7h. 49m.
S. 10	1st Sun. aft. Epi-	0.37	10. Abp. Laud <i>bhd.</i> 1645.
M. 11	[phany.	21.51.33	11. Sun <i>sets</i> 4h. 24m.
Tu. 12		22. 4	12. Lavater <i>d.</i> 1801.
W. 13		32.10	13. C. J. Fox <i>b</i> 1740.
Th. 14		21.50	14. Ed. Halley <i>d</i> 1742.
F. 15		11. 6	16. Battle of Corunna 1810
Sa. 16		20.59.58	17. <i>Gen. Assembly under present Constitution op.</i>
S. 17	2d Sun. aft. Epiph.	48.25	1843.
M. 18		36.29	
Tu. 19		24. 9	19. Clock <i>bef.</i> sun 9' 40".
W. 20		11.27	20. Ind. of U. States <i>pro.</i> 1783
Th. 21		19.53.22	21. Sun <i>rises</i> 7h. 44m.
F. 22		44.54	23. W. Pitt <i>d</i> 1806. D. of
Sa. 23		31. 5	Kent <i>d</i> 1820.
S. 24	3d Sun. aft. Epiph.	16.54	24. Fred. the Gt. <i>d</i> 1712.
M. 25	Conversion of St.	2.21	25. R. Burns <i>b</i> 1759.
Tu. 26	[Paul.	18.47.29	27. Sun <i>sets</i> 4h. 48m.
W. 27		32.15	28. Peter the Great <i>d</i> 1725.
Th. 28		16.42	29. George III. <i>d</i> 1820.
F. 29		0.48	30. Great Guns <i>inv.</i> 1330.
Sa. 30	King Chas. I Martyr	17.44.36	31. The Pretender <i>d</i> 1788.
S. 31	Septuagesima	28.53	Clock <i>bef.</i> sun. 13' 42".

## February, 28 Days.

## THE MOON'S CHANGES.

Last Quarter . . . . . 8th day 5h. 9m. aft.  
 New Moon . . . . . 15th " 2h. 56m. morn.  
 First Quarter . . . . . 22d " 7h. 30m. morn.

Apogee . . . . . 3d day 0h. 30m. morn.  
 Perigee . . . . . 16th " 4h. 30m. morn.

DAYS.	SUNDAYS AND RE-MARKABLE DAYS.	SUN'S DE-CLINATION.	ASTRONOMICAL PHENOMENA AND ANNIVERSARIES OF HISTORICAL EVENTS.
M. 1		S 17.11.15	1. Sun rises 7h. 31m.
Tu. 2	Purification.	16.54. 7	2. Candlemas Day.
W. 3		36.41	3. Hats <i>inv.</i> at Paris 1456.
Th. 4		18.57	5. Sir Robert Peel b 1788.
F. 5	Agatha.	0.57	6. Clock <i>bef.</i> sun 13' 51".
Sa. 6		15.42.40	8. Mary Queen of Scots <i>behd.</i> 1587.
S. 7	Sexagesima.	24. 8	9. Bp. Hooper <i>burnt</i> 1555.
M. 8		5.19	10. Sun sets 5h. 7m.
Tu. 9	The Queen & Prince	14.46.15	11. Hops first used in Eng-land 1525.
W. 10	[Albert m. 1840.	26.56	12. Lady Jane Grey <i>behd.</i> 1555.
Th. 11		7.23	14. Captain Cook <i>k</i> 1779. Battle off Cape St. Vin-cent 1797.
F. 12		13.47.35	15. Clock <i>bef.</i> sun 14' 26".
Sa. 13		27.34	16. Sun rises 7h. 8m.
S. 14	Quinquagesima.—	7.20	17. <i>B.I. Society</i> founded 1806
M. 15	[St. Valentine.	12.46.53	18. Martin Luther <i>d</i> 1546.
Tu. 16	Shrove Tuesday.	26.14	19. Sun sets 5h. 27m.
W. 17	Ash Wednesday.	5.23	20. D. Garrick <i>b</i> 1716.
Th. 18		11.44.20	21. <i>Torbay Church cons.</i> 1841. Lanterns <i>inv.</i> 890
F. 19		23. 7	23. Sir J. Reynolds <i>d</i> 1792.
Sa. 20		1.43	24. D. Cambridge <i>b</i> 1774.
S. 21	1st. Sun. in Lent.	10.40. 8	25. Sir C. Wren <i>d.</i> 1725.
M. 22		18.24	26. Bonaparte's escape from Elba, 1815.
Tu. 23		9.56.31	27. Clock <i>bef.</i> sun 13' 2".
W. 24	St. Matthias.	34.28	28. Sun rises 6h. 46m.
Th. 25		12.17	
F. 26		8.49.58	
Sa. 27		27.31	
S. 28	2d. Sun. in Lent.	4.57	

# March, 31 Days

## THE MOON'S CHANGES.

Last Quarter ..... 2d day 6h. 39m. morn.  
 New Moon..... 10th " 8h. 9m. morn.  
 First Quarter..... 17th " 0h. 41m. morn.  
 Full Moon..... 23rd " 9h. 11m. aft.  
 Apogee.... 2d day 5h. 30m. aft.  
 Perigee.... 16th " 2h. 30m. aft.  
 Apogee.... 29th " 9h. 30m. aft.

DAYS.	SUNDAYS AND RE-MARKABLE DAYS.	SUN'S DE-CLINATION.	ASTRONOMICAL PHENOMENA AND ANNIVERSARIES OF HISTORICAL EVENTS.
M. 1	St. David.	S. 7.42.16	1. Spectator comm. 1711.
Tu 2		19.28	2. Sun rises 6h. 39m.
W. 3		6.56.33	3. Clock <i>bef.</i> sun 12' 14".
Th. 4		33.33	4. Penn's treaty with the Indians 1681.
F. 5		10.28	5. Sun <i>sets</i> 5h. 50m.
Sa. 6		5.47.17	6. Sun <i>sets</i> 5h. 50m.
S 7	3d. Sun. in Lent.	02.0 24. 1	7. Lord Collingwood d 1810
M. 8		05.11 0.41	8. Sir W. Chambers d 1796
Tu. 9		08.4.37.17	9. Rizzio <i>assas.</i> 1566.
W. 10		13.53	10. Mail Coaches <i>estab.</i> 1784
Th. 11		3.50.19	11. Sun rises 6h. 19m.
F. 12		26.45	12. Chelsea Hospital <i>found- ed</i> 1682.
Sa. 13		3. 9	13. Adm. Byng <i>shot</i> 1757.
S 14	4th Sun. in Lent.	2.39.31	14. Lord Berners d 1632.
M. 15		15.51	15. Clock <i>bef.</i> sun 8' 38".
Tu. 16		1.52.10	16. Sir R. Walpole d 1745.
W. 17	St. Patrick.	28.28	17. Sun <i>sets</i> 5h. 58m.
Th. 18		4.44	18. Sir I. Newton d 1727.
F. 19		0.42	19. Abp. Cranmer <i>burnt</i> 1536
Sa. 20		S 17.20	20. Sun rises 6h. 0m. Equal day and night.
S 21	5th Sun. in Lent.	N 6.21	21. Q. Elizabeth d 1603.
M. 22		30. 2	22. Lady Day.
Tu. 23		53.42	23. Vanbrugh d 1726.
W. 24		1.17.20	24. Peace of Amiens 1802.
Th. 25	Ann. B. V. Mary.	40.35	25. Raffaele b 1483, d 1520
F. 26	P. George of Cam- [bridge b 1819.	2. 4.29	26. Clock <i>bef.</i> sun 4' 59".
Sa. 27		27.59	27. Allied Sovereigns enter Paris 1814. Sun rises 5h. 51m.
S 28	6th Sun. in Lent.	51.27	
M. 29	[Palm Sunday.	3.14.51	
Tu. 30		38.11	
W. 31		4. 1.28	

## April, 30 Days.

## THE MOON'S CHANGES.

Last Quarter.....	8th day	6h. 57m. aft.
New Moon.....	15th "	9h. 52m. morn.
First Quarter.....	22d "	0h. 39m. aft.
Full Moon.....	30th "	4h. 56m. aft.

Perigee....	14th day	2h. 30m. morn.
Apogee....	26th "	9h. 30m. morn.

DAYS.	SUNDAYS AND RE-MARKABLE DAYS.	SUN'S DE-CLINATION.	ASTRONOMICAL PHENOMENA AND ANNIVERSARIES OF HISTORICAL EVENTS.
Th. 1.		N 4.24.39	2. Battle of Copenhagen
F. 2.	Good Friday.	47.46	1801. Bishop Heber <i>d</i>
Sa. 3.		5.10.48	1826.
S. 4.	Easter Day.	33.45	3. Needles first made in
M. 5.	Easter Monday.	56.36	England 1545.
Tu. 6.	Easter Tuesday.	6.19.20	4. Clock <i>bef.</i> sun 3' 9".
W. 7.		41.59	5. Sun rises 5h. 3m.
Th. 8.		7. 4.30	6. 1st <i>stabd.</i> of Bonaparte 1814
F. 9.		26.55	9. Lord Bacon <i>d</i> 1626.
Sa. 10.		49.11	10. Sun <i>sets</i> 6h. 39m.
S. 11.	1st Sun. aft. Easter	8.11.21	11. Geo. Canning <i>b</i> 1770.
M. 12.	[Low Sunday.	33.22	12. Lord Rodney's <i>vict.</i> 1782
Tu. 13.		55.14	13. R.C. Emancipation 1829
W. 14.		9.16.58	14. Clock <i>bef.</i> sun 0' 22".
Th. 15.		38.32	15. Sun <i>rises</i> 5h. 14m.
F. 16.		59.57	16. Battle of Culloden 1747.
Sa. 17.		10.21.12	17. Dr. Franklin <i>d</i> 1790.
S. 18.	2d Sun. aft. Easter	42.17	18. Percussion powder <i>inv.</i>
M. 19.	Alphege.	11. 3.11	1803.
Tu. 20.		23.54	19. Lord Byron <i>d</i> 1824.
W. 21.		44.26	20. Spanish Fleet <i>des.</i> by
Th. 22.		12. 4.46	Blake 1567.
F. 23.	St. George.	24.54	21. Bishop Heber <i>b</i> 1783.
Sa. 24.		44.50	22. Sun <i>sets</i> 6h. 55m.
S. 25.	3d Sun. aft. Easter	13. 4.34	23. Shakspeare <i>b</i> 1564, <i>d</i>
M. 26.	[St. Mark.	24. 4	1616.
Tu. 27.		43.21	24. <i>Inv.</i> of Printing 1414.
W. 28.		14. 2.25	25. Princess Alice <i>b</i> 1843.
Th. 29.		21.15	27. Clock <i>aft.</i> sun 0' 27".
F. 30.		39.51	28. <i>Bp. Feild consec.</i> 1844.

## May, 31 Days.

### THE MOON'S CHANGES.

Last Quarter . . . . . 8th day 2h. 20m. morn.  
 New Moon . . . . . 14th " 6h. 54m. aft.  
 First Quarter . . . . . 22d " 5h. 29m. morn.  
 Full Moon . . . . . 30th " 6h. 16m. morn.

Perigee . . . 12th day 3h. 30m. morn.  
 Apogee . . . 24th day 0h. 30m. morn.

DAYS.	SUNDAYS AND RE-MARKABLE DAYS.	SUN'S DE-CLINATION.	ASTRONOMICAL PHENOMENA AND ANNIVERSARIES OF HISTORICAL EVENTS.
Sa. 1	St. Philip & St. Jas.	N 14.58.12	1. Union of England and Scotland 1707.
S 2	4th Sun. aft. Easter	15.16.18	2. D. of Wellington <i>b</i> 1769.
M. 3		34.10	3. Jamaica <i>dis.</i> 1495.
Tu. 4		51.46	4. Sun <i>rises</i> 4h. 43m.
W. 5		16. 9. 6	5. Clock <i>aft.</i> sun 3' 27".
Th. 6		26.11	Napoleon <i>d</i> 1821.
F. 7		42.59	6. Battle of Prague 1757.
Sa. 8		59.31	8. Sun <i>sets</i> 7h. 16m.
S 9	5th Sun. aft. Easter.	17.15.49	9. Corporation and Test Acts <i>rep.</i> 1828.
M. 10	[Rogation Sun.	31.43	10. Battle of Lodi 1796.
Tu. 11		47.23	11. Earl of Chatham <i>d</i> 1778
W. 12		18. 2.45	S. Percival <i>assas.</i> 1812.
Th. 13	Ascension Day.	17.49	13. Sun <i>rises</i> 4h. 29m.
F. 14		32.35	14. Vaccination first used by Dr. Jenner 1796.
Sa. 15		47. 2	16. Clock <i>aft.</i> sun 3' 54".
S 16	Sun. aft. Ascension	19. 1.10	17. Dr. Jenner <i>b</i> 1748.
M. 17	[Day.	14.58	18. Sun <i>sets</i> 7h. 29m.
Tu. 18		28.27	19. Anne Boleyn <i>behd.</i> 1636
W. 19	St. Dunstan.	41.37	20. Columbus <i>d</i> 1506.
Th. 20		54.26	22. Alex. Pope <i>b</i> 1688.
F. 21		20. 6.55	23. Battle of Ramillies 1706
Sa. 22		19. 3	25. Dr. Paley <i>d</i> 1805.
S 23	Whitsunday.	30.51	26. Ven. Bede <i>d</i> 735.
M. 24	H. M. Birthday.	42.17	27. Sun <i>rises</i> 4h. 15m.
Tu. 25		53.22	28. Clock <i>aft.</i> sun 3' 7".
W. 26	St. Augustine.	21. 4. 6	W. Pitt <i>b</i> 1759.
Th. 27		14.28	30. General Peace 1814.
F. 28		24.27	31. Sun <i>sets</i> 7h. 43m.
Sa. 29	Chas. II. restored.	34. 5	
S 30	Trinity Sunday.	43.20	
M. 31		52.13	

## June, 30 Days.

## THE MOON'S CHANGES.

Last Quarter . . . . . 6th day 7h. 37m. morn.  
 New Moon . . . . . 13th " 3h. 23m. morn.  
 First Quarter . . . . . 20th " 11h. 3m. aft.  
 Full Moon . . . . . 28th " 4h. 53m. aft.

Perigee . . . . . 8th day 4h. 30m.  
 Apogee . . . . . 20th " 7h. 3m. aft.

DAYS.	SUNDAYS AND RE-MARKABLE DAYS.	SUN'S DE-CLINATION.	ASTRONOMICAL PHENOMENA AND ANNIVERSARIES OF HISTORICAL EVENTS.
Tu. 1		N. 22. 0.43	1. Lord Howe's <i>vict.</i> 1794.
W. 2		8.49	2. Sun rises 4h.11m. Riots in London 1780.
Th. 3	Corpus Christi.	16.33	4. W. Wyndham <i>d</i> 1810.
F. 4		23.54	5. Clock <i>aft.</i> sun 2' 8".
Sa. 5	K. of Hanover born.	30.51	6. Sun <i>sets</i> 7h. 47m.
S 6	1st Sun. aft. Trinity.	37.24	7. 1st Lord Bp. of <i>Nfd.</i> arr. 1839.
M. 7		43.34	8. Ed. B. Prince <i>d</i> 1376.
Tu. 8		49.20	9. <i>Town of St. John's dest. by Fire</i> , 1846.
W. 9		54.42	10. New London Bridge <i>com.</i> 1824.
Th. 10		59.40	11. Roger Bacon <i>d</i> 1294.
F. 11	St. Barnabas.	23. 4.13	13. Sun rises 4h. 6m.
Sa. 12		8.22	14. Battle of Marengo 1800.
S 13	2d Sun. aft. Trinity.	12. 7	15. Equation of time 0' 0".
M. 14		15.27	17. John Wesley <i>b</i> 1703.
Tu. 15		18.23	18. Otaheite <i>dis.</i> 1765.—
W. 16		20.54	Battle of Waterloo 1815.
Th. 17		23. 1	19. Mag. Charta signed 1215.
F. 18		24.42	21. Sun <i>sets</i> 7h.56m. Long-est day.
Sa. 19		25.59	24. <i>Nfd. dis. by Cabot</i> 1497.
S 20	3d Sun. aft. Trinity.	26.51	25. Sun rises 4h. 8m.
M. 21	[Queen's A. accession]	27.19	26. Geo. IV. <i>d</i> 1830.
Tu. 22		27.21	27. Dr. Dodd <i>ex.</i> 1777.
W. 23		26.59	28. Clock <i>bef.</i> sun 2' 48. P
Th. 24	Midsummer Day:	26.12	P. Rubens <i>d</i> 1577.
F. 25	[Nat. St. John Bap.	25. 0	30. Sun <i>sets</i> 7h. 51m.
Sa. 26		23.23	
S 27	4th Sun. aft. Trinity.	21.22	
M. 28	Coron. of H. Majesty	18.56	
Tu. 29	St. Peter. [1838.	16. 6	
W. 30		12.51	

## July, 31 Days.

## THE MOON'S CHANGES.

Last Quarter . . . . . 5th day 0h. 13m. aft.  
 New Moon . . . . . 12th " 3h. 8m. aft.  
 First Quarter . . . . . 20th " 4h. 23m. aft.  
 Full Moon . . . . . 28th " 1h. 39m. morn.

Perigee . . . . . 3d day 4h. 30m. morn.  
 Apogee . . . . . 18th " 1h. 30m. morn.  
 Perigee . . . . . 30th " 0h. 30m. morn.

DAYS.	SUNDAYS AND RE-MARKABLE DAYS.	SUN'S DE-CLINATION.	ASTRONOMICAL PHENOMENA AND ANNIVERSARIES OF HISTORICAL EVENTS.
Th. 1		N. 23. 9.12	2. Abp. Cranmer <i>b</i> 1489
F. 2		5. 8	<i>St. Paul's Church, Har-</i>
Sa. 3	Dog days begin.	0.40	<i>bour Grace, cons.</i> 1840.
S 4	5th Sun. aft. Trinity.	22.55.48	3. Sun rises 4h. 13m.
M. 5		50.32	4. Clock <i>bef.</i> sun 3' 55".
Tu. 6		44.52	<i>Lord Bn. Feild arr.</i> 1844.
W. 7	Thomas à Becket.	38.48	5. Sir T. More <i>behd.</i> 1535.
Th. 8		32.21	7. R. B. Sheridan <i>d</i> 1818.
F. 9		25.31	8. Ed. Burke <i>d</i> 1797.
Sa. 10		18.17	9. Bourbon Dynasty <i>rest.</i>
S 11	6th Sun. aft. Trinity.	10.40	1815.
M. 12		2.40	10. L'don Bridge <i>burnt</i> 1212
Tu. 13		21.54.17	11. Sun <i>sets</i> 7h. 50m.
W. 14		45.32	12. Erasmus <i>d</i> 1536.
Th. 15	St. Sarthin.	36.25	14. Mrs. Siddons <i>b</i> 1755.
F. 16		26.55	Baroness de S'tael <i>d</i> 1817.
Sa. 17		17.14	16. Clock <i>bef.</i> sun 5' 40".
S 18	7th Sun. aft. Trinity.	6.51	<i>St. John's a Free Port</i> 1828.
M. 19		20.56.17	Sir J. Reynolds <i>d</i> 1723.
Tu. 20	St. Margaret.	45.21	18. Sun rises 4h. 26m.
W. 21		34. 4	Hampden <i>k</i> 1643.
Th. 22	Mary Magdalene.	22.27	19. <i>Fire at St. John's</i> 1819.
F. 23		10.30	21. Union of England and
Sa. 24		19.58.12	Scotland 1906. R. Burns
S 25	8th Sun. aft. Trinity.	45.34	<i>d</i> 1796.
M. 26	[St. James.	32.36	22. Bat. of Salamanca 1812.
Tu. 27		19.19	23. Gibraltar <i>taken</i> 1704.
W. 28		5.43	27. 1st Lord Bp. of N'jd.
Th. 29		18.51.47	<i>a p.</i> 1839.
F. 30		37.34	28. Sun <i>sets</i> 7h. 34m.
Sa. 31		23. 1	29. Clock <i>bef.</i> sun 6' 10".

## August, 31 Days.

## THE MOON'S CHANGES.

Last Quarter . . . . . 3d day 4h. 30m. aft.  
 New Moon . . . . . 11th " 3h. 59m. morn.  
 First Quarter . . . . . 19th " 8h. 32m. morn.  
 Full Moon . . . . . 26th " 9h. 40m. morn.

Apogee . . . . . 15th day 6h. 30m. morn.  
 Perigee . . . . . 27th " 3h. 30m. morn.

DAYS.	SUNDAYS AND RE-MARKABLE DAYS.	SUN'S DE-CLINATION.	ASTRONOMICAL PHENOMENA AND ANNIVERSARIES OF HISTORICAL EVENTS.
S 1	9th Sun. aft. Trinity.	N 18. 8.11	1. Battle of the Nile 1798.
M. 2	[Lammas.	17.53. 2	2. Clock <i>bef.</i> sun 6' 00".
Tu. 3		37.36	3. Sun <i>rises</i> 4h. 46m.
W. 4		21.53	4. Lord Howe <i>d</i> 1799.
Th. 5		5.53	5. Jonas Hanway <i>d</i> 1786.
F. 6		16.49.36	6. Ben Johnson <i>d</i> 1637.
Sa. 7		33. 2	7. Geo. Canning <i>d</i> 1827.
S 8	10th Sun. aft. Trin.	16.13	8. P. B. Shelley <i>d</i> 1822.
M. 9		15.59. 7	9. John Dryden <i>b</i> 1631.
Tu. 10		41.47	10. Sun <i>sets</i> 7h. 16m.
W. 11	Dog days end.	24.11	12. Marquis of Londonderry <i>d</i> 1822.
Th. 12		6.20	
F. 13	Dow. Q. Adelaide	14.48.13	13. Jeremy Taylor <i>d</i> 1667.
Sa. 14	[ <i>b</i> 1792.	29.56	15. Admiral Blake <i>b</i> 1599.
S 15	11th Sun. aft. Trin.	11.23	Napoleon <i>b</i> 1769.
M. 16		13.52.36	16. Clock <i>bef.</i> sun 4' 9".
Tu. 17	Duchess of Kent <i>b</i>	33.37	17. Adm. Blake <i>d</i> 1657.
W. 18	[1786.	14.24	18. <i>Fire at H. Grace</i> 1832.
Th. 19		12.54.59	19. Lord J. Russell <i>b</i> 1792.
F. 20		35.29	21. Battle of Bosworth 1435.
Sa. 21		15.32	Lady M. W. Montague <i>d</i>
S 22	12th Sun. aft. Trin.	11.55.31	1762.
M. 23	[St. Bartholomew.	35.19	22. Sun <i>rises</i> 5h. 10m.
Tu. 24		14.55	23. <i>St. Thomas's Church,</i>
W. 25		10.54.21	( <i>St. John's</i> ), <i>cons.</i> 1840.
Th. 26	Prince Albert <i>b</i>	33.37	25. Battle of Cressy 1346.
F. 27	[1819.	12.42	D. Hume <i>d</i> 1776. James
Sa. 28		9.51.38	Watt <i>d</i> 1819.
S 29	13th Sun aft. Trin.	30.24	28. Robespierre <i>guill.</i> 1794.
M. 30		9. 1	30. Sun <i>sets</i> 6h. 38m.
Tu. 31		8.47.30	31. Equation of time 0' 0".



September, 30 Days.

THE MOON'S CHANGES.

Last Quarter..... 2d day 0h. 45m. morn.  
 New Moon..... 9th " 7h. 18m. aft.  
 First Quarter..... 17th " 10h. 51m. aft.  
 Full Moon..... 24th " 5h. 56m. aft.

Apogee.... 11th day 4h. 30m. aft.  
 Perigee.... 25th " 0h. 30m. morn.

DAYS.	SUNDAYS AND RE-MARKABLE DAYS.	SUN'S DE-CLINATION.	ASTRONOMICAL PHENOMENA AND ANNIVERSARIES OF HISTORICAL EVENTS.
W. 1	Giles.	N. 8.25.49	1. <i>Light House on Cape Spear opened 1836.</i>
Th. 2		4. 1	2. Gt. fire of London 1666.
F. 3		7.42. 4	3. <i>Gas first introduced at St. John's 1845. Sun r 5h 26m.</i>
Sa. 4		20. 0	5. Malta taken 1800.
S 5	14th Sun. aft. Trin.	6.57.49	7. Queen Elizabeth b 1533.
M. 6		35.31	Dr. Johnson b 1709.
Tu. 7		13. 6	Clock aft. sun 1' 56".
W. 8		5.50.35	9. Sun sets 6h. 22m.
Th. 9		27.58	10. Mungo Park d 1771.
F. 10		5.16	11. <i>Light exh. on Cape Bond-vista 1843. The Queen's visit to Scotland 1844.</i>
Sa. 11		4.42.28	13. Gen. Wolfe k 1759. C. J. Fox d 1806.
S 12	15th Sun. aft. Trin.	19.35	14. Burning of Moscow 1812
M. 13		3.56.38	15. W. Huskisson k 1830.
Tu. 14		33.37	18. Geo. I. and II. landed 1714. Sun rises 5h. 46m.
W. 15		10.32	19. <i>Violent hurricane 1846.</i>
Th. 16		2.47.24	21. <i>St. Thomas's Church opd. 1836.</i>
F. 17		24.12	22. Equal day and night.
Sa. 18		0.58	23. Samuel Butler d 1680.
S 19	16th Sun. aft. Trin.	1.37.41	25. Porson d 1808.
M. 20		14.22	26. Constantinople founded 329.
Tu. 21	Clock aft. sun 6' 18".	0.51. 1	29. Lord Nelson b 1758.
W. 22	St. Matthew. Eq.	27.39	30. Clock aft. sun 9' 52".
Th. 23	[day]	N. 4.16	
F. 24		S. 19. 8	
Sa. 25		42.32	
S 26	17th Sun. aft. Trin.	1. 5.57	
M. 27		29.22	
Tu. 28		52.47	
W. 29	Michaelmas.	2.16.10	
Th. 30	St. Jerome.	39.32	

## October, 31 Days.

## THE MOON'S CHANGES.

Last Quarter..... 1st day 11h. 7m. morn.  
 New Moon..... 9th " 0h. 37m. aft.  
 First Quarter..... 17th " 11h. 11m. morn.  
 Full Moon..... 24th " 3h. 6m. morn.  
 Last Quarter..... 31st " 1h. 27m. morn.

Apogee..... 8th day, 8h. 3m. aft.  
 Perigee..... 23d " 11h. 30m. morn.

DAYS.	SUNDAYS AND RE-MARKABLE DAYS.	SUN'S DE-CLINATION.	ASTRONOMICAL PHENOMENA AND ANNIVERSARIES OF HISTORICAL EVENTS.
F. 1	St. Remigius.	S 3. 2.53	1. Sun rises 6h. 4m.
Sa. 2		26.12	3. Clock <i>aft.</i> sun 10' 49".
S 3	18th Sun. aft. Trin.	49.29	4. John Rennie <i>d</i> 1821.
M. 4		4.12.43	6. Peace with U. States 1783.
Tu. 5		35.55	7. Abp. Laud <i>b</i> 1573.
W. 6		59. 3	8. King of the French <i>b</i> 1773
Th. 7		5.22. 7	His visit to Queen Victoria 1844.
F. 8		45. 7	9. Eddystone Light House <i>comp.</i> 1759.
Sa. 9		6. 8. 3	11. America <i>dis.</i> 1492.— Bat. of Camperdown 1797
S 10	19th Sun. aft. Trin.	30.54	13. Murat <i>shot</i> 1815. Ca- nova <i>d</i> 1822.
M. 11		53.40	14. Battle of Hastings 1066
Tu. 12		7.16.20	15. Clock <i>aft.</i> Sun 14' 2".
W. 13		38.55	16. Ridley and Latimer <i>burnt</i> 1555.
Th. 14		8. 1.22	18. Dean Swift <i>d</i> 1745.
F. 15		23.43	20. Battle of Navarino 1827
Sa. 16		45.57	21. Battle of Trafalgar 1805
S 17	20th Sun. aft. Trin.	9. 8. 3	22. Lord Holland <i>d</i> 1840.
M. 18	St. Luke.	30. 2	24. First British Parliament <i>met</i> 1707.
Tu. 19		51.52	25. Battle of Agincourt 1415
W. 20		10.13.33	26. Hogarth <i>d</i> 1764.
Th. 21		35. 5	27. Captain Cook <i>b</i> 1728.
F. 22		56.28	28. Clock <i>aft.</i> sun. 16' 28". Royal Exchange <i>opened</i>
Sa. 23		11.17.41	by Her Majesty 1844.
S 24	21st Sun aft. Trin.	38.43	30. Sun rises 6h. 49m.
M. 25	St. Crispin.	59.36	
Tu. 26		12.20.17	
W. 27		40.46	
Th. 28	St. Simon & St. Jude	13. 1. 4	
F. 29		21.10	
Sa. 30		41. 3	
S 31	22d. Sun. aft. Trin.	14. 0.43	

## November, 30 Days.

## THE MOON'S CHANGES.

New Moon . . . . . 8th day 6h. 41m. morn.  
 First Quarter . . . . . 15th " 9h. 45m. aft.  
 Full Moon . . . . . 22nd " 1h. 35m. aft.  
 Last Quarter . . . . . 29th " 7h. 52m. aft.

Apogee . . . . . 5th day 2h. 30m. morn.  
 Perigee . . . . . 20th " 8h. 30m. aft.

DAYS.	SUNDAYS AND RE-MARKABLE DAYS.	SUN'S DE-CLINATION.	ASTRONOMICAL PHENOMENA AND ANNIVERSARIES OF HISTORICAL EVENTS.
M. 1	All Saints.	S. 14.20.10	1. Sir M. Hale <i>b</i> 1600.
Tu 2	All Souls.	39.23	Earthquake at Lisbon 1755
W. 3		58.22	3. Clock <i>aft.</i> sun 16' 17".
Th. 4		15.17. 6	4. <i>Chief Justice Norton arr.</i> 1844.
F. 5	Gunpowder Plot	35.35	
Sa. 6	1605.]	53.49	5. Sun <i>rises</i> 6h.55m. Battle of Jemappe 1792.
S 7	23d Sun. <i>aft.</i> Trin.	16.11.47	
M. 8		29.28	6. Princess Charlotte <i>d</i> 1817
Tu. 9	Prince of Wales <i>b</i>	46.53	7. <i>Fire at St. John's</i> 1817.
W. 10	[1841.	17. 4. 1	8. Cortes entered Mexico 1519.
Th. 11	St. Martin.	20.51	
F. 12		37.24	10. Martin Luther <i>b</i> 1483.
Sa. 13		53.38	Catherine of Russia <i>d</i> 1796.
S 14	24th Sun. <i>aft.</i> Trin.	18. 9.33	12. Canute the Great <i>d</i> 1036.
M. 15		25. 9	13. J. P. Curran <i>d</i> 1817.
Tu. 16		40.25	14. Source of Nile <i>dis.</i> 1770.
W. 17		55.22	15. Lord Chatham <i>b</i> 1708.
Th. 18		19. 9.58	W. Cowper <i>b</i> 1731.
F. 19		24.14	16. Clock <i>aft.</i> sun 15' 6".
Sa. 20	St. Edmund.	38. 8	17. Lord Erskine <i>d</i> 1825.
S 21	25th Sun. <i>aft.</i> Trin.	51.42	18. P. P. Rubens <i>b</i> 1577.
M. 22	[Princess Royal <i>b</i>	20. 4.53	20. Lord Hawke's <i>vict.</i> 1759.
Tu. 23	St. Clement. [1840.	17.42	<i>2d great fire at St. John's</i>
W. 24		30. 9	1817. <i>Harbour Grace Light House opened</i> 1837.
Th. 25	St. Catherine.	42.13	
F. 26		53.54	24. Sun <i>sets</i> 4h. 10m.
Sa. 27		21. 5.11	25. Dr. Watts <i>d</i> 1748.
S 28	Advent Sunday.]	16. 5	28. Cardinal Wolsey <i>d</i> 1530
M. 29		26.34	29. Clock <i>aft.</i> sun 11' 37".
Tu. 30	St. Andrew.	36.39	30. Sun <i>rises</i> 7h. 30m.

## December, 31 Days.

## THE MOON'S CHANGES.

New Moon..... 7th day, midnight.  
 First Quarter..... 15th " 6h. 57m. morn.  
 Full Moon..... 22d " 1h. 39m. morn.  
 Last Quarter..... 29th " 5h. 19m. aft.

Apogee.... 2d day 5h. 30m. aft.  
 Perigee.... 18th " 4h. 30m. aft.  
 Apogee.... 30th " 1h. 30m. morn.

DAYS.	SUNDAYS AND RE-MARKABLE DAYS.	SUN'S DE-CLINATION.	ASTRONOMICAL PHENOMENA AND ANNIVERSARIES OF HISTORICAL EVENTS.
W. 1		S. 21.46.20	1. Pope Leo. X <i>d</i> 1521.
Th. 2		55.35	2. Battle of Austerlitz 1805.
F. 3		22. 4.35	3. Clock <i>aft.</i> sun 10' 7". <i>St.</i>
Sa. 4		12.50	<i>Andrew's Church opd.</i> 1843
S 5	2d Sun. in Advent.	20.48	5. Sun <i>rises</i> 7h. 39m.
M. 6		28.21	7. Ney <i>shot</i> 1815.
Tu. 7		35.28	8. Mary Q. of Scots <i>b</i> 1542.
W. 8		42. 7	9. Milton <i>b</i> 1608.
Th. 9		48.21	10. Sun <i>sets</i> 4h. 1m.
F. 10		54. 7	11. Chas. XII. <i>b</i> 1718.
Sa. 11		59.26	12. Lord Hood <i>b</i> 1724.
S 12	3d Sun. in Advent.	23. 4.17	13. Dr. Johnson <i>d</i> 1784.
M. 13		8.42	14. M. Malte Brun <i>d</i> 1826,
Tu. 14		12.38	15. Isaak Walton <i>d</i> 1683.
W. 15		16. 7	16. Clock <i>aft.</i> sun 4' 17".
Th. 16		19. 8	Cromwell <i>dec.</i> Protector
F. 17		21.41	1653.
Sa. 18		23.46	18. Sun <i>rises</i> 7h. 50m.
S 19	4th Sun. in Advent.	25.22	19. Tycho Brahe <i>b</i> 1546.
M. 20		26.31	20. Thomas Gray <i>d</i> 1724.
Tu. 21	St. Thomas.	27.11	21. Shortest day.
W. 22		27.23	23. James II. fled from
Th. 23		27. 6	Rochester 1688.
F. 24		26.22	24. Peace with United States
Sa. 25	Christmas Day.	25. 9	1814.
S 26	1st Sun. aft. X'mas.	23.27	25. Sir I. Newton <i>b</i> 1642,
M. 27	[St. Stephen.	21.18	Sir M. Hale <i>d</i> 1676.
Tu. 28	St. John Evan.	18.40	28. Boyle <i>d</i> 1706.
W. 29	[Innocents.	15.34	30. Sun <i>rises</i> 7h. 50m.
Th. 30		12. 1	31. W. Gifford <i>d</i> 1827.
F. 31	Silvester.	7.59	

## Meteorological Averages.

		BAROMETER.		THERMOMETER.	
		Inches.		Degrees.	
		Nfld.	England.	Nfld.	England.
	Mean . . . . .	29.63	29.92	24	36
January . . . .	Highest . . . . .	30.44	30.77	45	52
	Lowest . . . . .	28.65	28.89	0	11
	Mean . . . . .	29.61	30.06	21	38
February . . . .	Highest . . . . .	30.34	30.82	43.5	53
	Lowest . . . . .	28.59	29.17	— 3	21
	Mean . . . . .	29.65	29.84	25.8	43.9
March . . . . .	Highest . . . . .	30.37	30.77	47	66
	Lowest . . . . .	28.65	28.87	2	24
	Mean . . . . .	29.70	29.88	33	49.9
April . . . . .	Highest . . . . .	30.29	30.54	58	74
	Lowest . . . . .	29.02	29.20	12	29
	Mean . . . . .	29.75	29.89	40	54
May . . . . .	Highest . . . . .	30.25	30.38	64	70
	Lowest . . . . .	29.17	29.16	25	33
	Mean . . . . .	29.77	30.02	48	58.7
June . . . . .	Highest . . . . .	30.32	30.46	75.5	90
	Lowest . . . . .	29.32	29.60	30.63	37
	Mean . . . . .	29.80	29.87	58.7	61
July . . . . .	Highest . . . . .	30.18	30.30	81	76
	Lowest . . . . .	29.40	29.39	37.5	42
	Mean . . . . .	29.86	29.89	60.3	61.6
August . . . . .	Highest . . . . .	30.20	30.26	79	82
	Lowest . . . . .	29.38	29.35	38.6	41
	Mean . . . . .	29.81	29.93	53.8	57.8
September . . .	Highest . . . . .	30.25	30.41	75.3	76
	Lowest . . . . .	29.28	29.41	34	36
	Mean . . . . .	29.83	29.77	44.4	48.9
October . . . .	Highest . . . . .	30.29	30.61	67	68
	Lowest . . . . .	29.21	28.74	26	27
	Mean . . . . .	29.63	29.77	34.3	42.9
November . . . .	Highest . . . . .	30.22	30.27	57	62
	Lowest . . . . .	28.77	29.08	16.9	23
	Mean . . . . .	29.65	29.69	27	39.8
December . . . .	Highest . . . . .	30.36	30.32	46.3	55
	Lowest . . . . .	28.88	29.12	7.6	17

N.B. The average annual *mean* temperature at St. John's is about 39 deg., or about 29 deg. for the seven winter months (November to May), and 53 deg. for the summer. In England the average temperature has been stated to be 52 deg., or about 65 deg. for summer, and 40 deg. for winter. At *St. John's*, the 7th *February* is, on average of years, the coldest day of the year. In England, the 14th *January*.

## Observations on the Weather.

1. **MISTS.**—A white mist in the evening, over a meadow with a river, will be drawn up by the sun next morning, and the day will be bright. Five or six fogs successively drawn up, portend rain. Where the mist which hangs over low lands draws towards high hills in the morning, and rolls up to the top, it will be fair; but if the mist hangs upon the hills, and drags along the woods, there will be rain.

2. **CLOUDS.**—Against much rain the clouds increase very fast, especially before thunder. When they are formed like fleeces, but dense in the middle, and bright towards the edges, with the sky bright, they are signs of a frost, with hail, snow, or rain. If they form high in air, in thin white trains, like locks of wool, they portend wind, and probably rain. When a general cloudiness covers the sky, and small black fragments of clouds fly underneath, they are a sure sign of rain, and probably will be lasting. Two currents of clouds always portend rain, and in summer, thunder.

3. **DEW.**—If the dew lies plentifully on the grass after a fair day, it is a sign of another. If not, and there is no wind, rain must follow. A red evening portends fine weather; but if it spread too far upward from the horizon in the evening, and especially morning, it foretels wind or rain, or both. When the sky, in rainy weather, is tinged with sea green, the rain will increase; if with deep blue, it will be showery.

4. **HEAVENLY BODIES.**—If there be a haziness in the air which fades the sun's light, and makes the orb appear whitish, or ill-defined; or, at night, if the moon and stars grow dim, and a ring encircles the former, rain will follow. If the sun's rays appear like Moses' horns, if white at setting, or shorn of its rays, or goes down into a bank of cloud in the horizon, bad weather is to be expected. If the moon looks pale and dim, we expect rain; if red, wind; and if of a natural colour, with a clear sky, fair weather. If the moon is rainy throughout, it will clear at the change, and perhaps the rain return a few days after. If fair throughout, and rain at the change, the fair weather will probably return on the fourth or fifth day. If at night the stars appear unusually numerous, and there be little or no wind, easterly wind and rain, or snow, generally soon follow.

5. **WIND.**—If the wind veers about, much rain is pretty sure. If in changing it follows the course of the sun, it brings fair weather; the contrary, foul. Whistling or howling of the wind, a sure sign of rain.

6. **METEORS.**—The Aurora Borealis, after warm days, are generally succeeded by cooler air. Shooting stars are supposed to indicate wind.

The following observations are by the ingenious Dr. KIRWAN:—

1. When there has been no particular storm about the time of the Spring Equinox (March 21), if a storm arise from the *East* on or before that day, or if a storm from any point of the compass arise near a week after the equinox, then, in either of these cases, the succeeding summer is generally *dry*, four times in five.

2. But if a storm arise from the S.W. or W.S.W. on or just before the Spring equinox, then the summer following is generally *wet*, 5 times in 6.

## Reigning Sovereigns of Europe.

ARRANGED ACCORDING TO THE DATE OF THEIR SUCCESSION.

SOVEREIGNS.	DATE OF SUCCESSION	AGE AT TIME OF ACCESSION.
1 George William, Prince of Lippe-Schamburg . . . . .	1787 Feb. 13	2 Years.
2 Leopold, Prince of Lippe Detmold	1802 April 4	5 "
3 Bernard, Duke of Saxe Meiningen	1803 Dec. 24	3 "
4 Gunther, Prince of Schwartz- burgh-Rudolstadt . . . . .	1807 April 28	13 "
5 George, Prince of Waldeck . . . . .	1813 Sept. 9	23 "
6 Maria Louisa, Duchess of Parma . . .	1814 May 30	22 "
7 Francis VI., Duke of Modena . . . . .	1815 June 8	35 "
8 William, King of Wurtemberg . . . . .	1816 Oct. 30	35 "
9 George, Grand Duke of Meck- lenburgh Strelitz . . . . .	1816 Nov. 6	37 "
10 Leopold, Duke of Anhalt-Dessau	1817 August 9	2 "
11 Henry, Prince of Reuss-Schleiz . . .	1818 April 7	32 "
12 William II., Elector of Hesse-Cassel	1821 Feb. 27	43 "
13 Henry, Prince of Reuss-Ebers- dorf-Lobenstein . . . . .	1822 July 12	25 "
14 Charles Louis, Duke of Lucca . . . . .	1824 Mar. 13	25 "
15 Leopold II., Grand Duke of Tuscany	1824 June 8	26 "
16 Louis, King of Bavaria . . . . .	1825 Oct. 13	39 "
17 Nicholas I., Emperor of Russia . . .	1825 Dec. 1	29 "
18 Maria II. da Gloria, Queen of Portugal . . . . .	1826 May 2	6 "
19 Charles Frederick, Grand Duke of Saxe Weimar . . . . .	1828 June 14	45 "
20 Augustus, Grand Duke of Ol- denburgh . . . . .	1829 May 21	46 "
21 Leopold, Grand Duke of Baden . . . . .	1830 Mar. 30	40 "
22 Louis II., Grand Duke of Hesse Darmstadt . . . . .	1830 April 6	53 "
23 Louis Philip, King of the French	1830 Aug. 9	57 "
24 Henry, Duke of Anhalt-Coethen . . .	1830 Aug. 23	52 "
25 Ferdinand II., King of the Two Sicilies . . . . .	1830 Nov. 8	21 "
26 Pope Gregory XVI . . . . .	1831 Feb. 2	65 "
27 William, Duke of Brunswick . . . . .	1831 April 25	25 "
28 Charles Albert, King of Sardinia . . .	1831 April 27	42 "
29 Leopold, King of Belgium . . . . .	1831 July 21	41 "
30 Anthony Frederic, Prince of Ho- henzollern Sigmarigen . . . . .	1831 Oct. 17	46 "
31 Otho, King of Greece . . . . .	1832 Oct. 5	17 "
32 Isabella II., Queen of Spain . . . . .	1833 Sept. 29	3 "
33 Alexander, Duke of Anhalt- Bernburgh . . . . .	1834 Mar. 24	29 "
34 Joseph, Duke of Saxe-Altenburgh	1834 Sept. 29	45 "
35 Ferdinand I., Emperor of Austria	1835 Mar. 2	42 "

## REIGNING SOVEREIGNS OF EUROPE CONTINUED.

SOVEREIGNS.	DATE OF SUCCESSION.	AGE AT TIME OF ACCESSION.
36 Gunther II., Prince of Schwartz- burgh-Sondershausen.....	1835 Aug. 19	34 Years.
37 Aloys, Prince of Lichtenstein....	1836 April 20	40 "
38 Fred. Augustus, King of Saxony...	1836 June 6	39 "
39 Henry XX., Prince of Reuss-Greiz	1836 Oct. 31	42 "
40 Paul Frederick, Prince of Meck- lenburgh Schwerin.....	1837 Feb. 1	36 "
41 Victoria, Queen of Great Britain..	1837 June 20	18 "
42 Ernest, King of Hanover.....	1837 June 20	66 "
43 Frederick, Prince of Hohenzol- lern Hechingen.....	1838 Sept. 12	37 "
44 Philip, Landgrave of Hesse- Homburgh.....	1839 Jan. 19	60 "
45 Abdul Medjid Khan, Sultan of Turkey.....	1839 July 1	17 "
46 Adolphus, Duke of Nassau.....	1839 Aug. 20	22 "
47 Christian VIII., King of Denmark	1839 Dec. 3	53 "
48 Frederick William IV., King of Prussia.....	1840 June 7	45 "
49 William II., King of the Netherlands	1840 Oct. 7	48 "
50 —, Duke of Saxe Coburg Gotha	1844 Jan.	— "
51 Oscar II., King of Sweden.....	1844 Mar. 8	51 "

## Kings and Queens of England, from the Conquest.

NAMES.	BEGAN TO REIGN.	NAMES.	BEGAN TO REIGN.
William I. . . . .	1066 Dec. 2	Mary I. . . . .	1553 July 6
William II. . . . .	1087 Sept. 20	Elizabeth . . . . .	1558 Nov. 17
Henry I. . . . .	1100 Aug. 5	James I. . . . .	1603 Mar. 24
Stephen . . . . .	1135 Dec. 26	Charles I. . . . .	1625 Mar. 27
Henry II. . . . .	1154 Dec. 19	Commonwealth	
Richard I. . . . .	1189 Sept. 3	from the ex. of	
John . . . . .	1199 May 27	Chas. I. Jan. 30,	
Henry III. . . . .	1216 Oct. 28	1649, to the rest.	
Edward I. . . . .	1272 Nov. 20	of Chas. II. . . . .	
Edward II. . . . .	1307 July 8	Charles II. . . . .	1660 May 20
Edward III. . . . .	1327 Jan. 25	James II. . . . .	1685 Feb. 6
Richard II. . . . .	1377 June 22	William III. &	
Henry IV. . . . .	1399 Sept. 30	Mary II. . . . .	1689 Feb. 13
Henry V. . . . .	1413 March 21	Wm. III. alone	1694
Henry VI. . . . .	1422 Sept. 1	Anne . . . . .	1702 Mar. 8
Edward IV. . . . .	1461 March 4	George I. . . . .	1714 Aug. 18
Edward V. . . . .	1483 April 9	George II. . . . .	1727 June 11
Richard III. . . . .	1483 June 26	George III. . . . .	1760 Oct. 25
Henry VII. . . . .	1485 Aug. 22	George IV. . . . .	1820 Jan. 29
Henry VIII. . . . .	1509 April 22	William IV. . . . .	1830 June 26
Edward VI. . . . .	1547 Jan. 28	Victoria . . . . .	1837 June 20



**Officers of the Civil Government, Judges, Clergy, &c.**

**Governor, Vice-Admiral, and Commander-in-Chief:**

**Private Secretary:**

**Administrator of the Government:**

**Lieut.-Col. LAW, K.H., Commanding the Troops.**

**Private Secretary to His Honor, RICHARD LAW:**

**Colonial Secretary and Clerk of Council:**

**Hon. JAMES CROWDY.**

**Colonial Secretary's Office:**

**Clerks, JOSEPH TEMPLEMAN, CHRISTOPHER AYRE:**

**Office-Keeper, VALENTINE BORN, Messenger, J. HOWSON:**

**Colonial Treasurer, Hon. PATRICK MORRIS.**

**Surveyor-General, Hon. J. NOAD.**



[By Act 5 & 6 Vic. cap. 120, for amending the Constitution of the Government, the functions of the late Executive Council were abolished, and the Members constituted a Legislative Council, and assigned to sit and vote with the Representatives of the People in one House, under the name of the GENERAL ASSEMBLY, and a new Executive Council was, in consequence, sworn in on the 27th Sept., 1841. By Act 9 & 10 Vic. Cap. 45, it was further continued in force for one year, viz. to 1st September, 1847.]



**Her Majesty's Executive Council.**

The Hon. JAMES CROWDY (Speaker of the General Assembly, Colonial Secretary.) †

“ WILLIAM THOMAS. †

“ PATRICK MORRIS (Colonial Treasurer.) †

“ WM. BICKFORD ROW (Q. C.) †

“ JOSEPH NOAD (Surveyor-General.)

“ BRYAN ROBINSON (Q. C.)

“ THOMAS BENNETT.

“ ROBERT JOB.

“ THOMAS RIDLEY.

“ LAWRENCE O'BRIEN.

“ WALTER GRIEVE.

**The ATTORNEY GENERAL. †**

## Legislative Council.

Those Members of the Executive Council marked †; and,

Hon. C. F. BENNETT*,	Hon. H. A. EMERSON, (H.M.
" JAMES TOBIN*,	Solicitor General.)
" JOHN KENT*,	" JOHN STUART.

## General Assembly.

[ELECTED DECEMBER, 1842.]

Speaker, Hon. JAMES CROWDY (Colonial Secretary.)

### ELECTORAL DISTRICTS.

St. John's { Hon. L. O'BRIEN, (M. E. C.) †  
J. V. NUGENT, \*  
R. J. PARSONS. ‡

Conception Ba { Hon. THOMAS RIDLEY, (M. E. C.) †  
JOHN MUNN, †  
J. L. PRENDERGAST, \*  
EDMUND HANRAHAN.

Trinity Bay — THOMAS B. JOB. \* †

Bonavista — ROBERT CARTER, R.N. \* †

Fogo — JOHN SLADE. †

Ferryland — THOMAS GLEN. \*

Placentia and St. Mary's { JOHN DILLON, †  
SIMON MORRIS.

Burin — CLEMENT BENNING.

Fortune Bay — Hon. BRYAN ROBINSON, (M. E. C., Q. C.)

### OFFICERS OF THE GENERAL ASSEMBLY.

Usher of the Black Rod — JOSEPH TEMPLEMAN.

Clerk — R. R. WAKEHAM.

Assistant Clerk — R. HOLDEN.

Solicitor — H. W. HOYLES.

Sergeant-at-Arms — ELIAS RENDELL.

Doorkeeper — G. ANDERSON.

Under-ditto — PHILIP BROWN.

Messenger — VALENTINE BORN.

Under ditto — — POWER.

\* Governors of Savings' Bank. † Justices of the Peace. ‡ Elected June, 1843, vice Carson, dec. † Elected Oct., 1846, vice Barnes, dec.

## Customs' Department.

Collector, Hon. JAMES M. SPEARMAN.  
 Landing and Tide Surveyor, GEORGE BAYLY.  
 Waiters and Searchers { GEORGE J. HAYWARD,  
                                   GAWEN MELLERSH.  
 1st Clerk and Warehouse-keeper, JAMES BAYLY.  
 2nd Clerk, PERCIVAL HINDMARSH.  
 3rd Clerk, GEORGE BENNETT. 4th Clerk, J. R. MULLINGS.  
 Lockers { R. FURNEAUX,  
           P. M'KIE.

### SUB-COLLECTORS AT THE OUTPORTS.

Twillingate — SAMUEL PROWSE.  
 Trinity — ROBERT BAYLY.  
 Carbonear — DONALD BETHUNE.  
 Harbour Grace — Sub-collector & Warehouse-keeper, E. E. BROWN.  
 Brigus — JOSHUA GREEN.  
 Ferryland — ROBERT CARTER.  
 Placentia — W. G. BRADSHAW.  
 Burin — T. BIRKETT.  
 Little Bay — THOMAS E. GADEN.

### OFFICERS OF THE COLONIAL REVENUE.

St. John's { Landing Waiter, E. L. MOORE.  
               Tide Surveyor, WILLIAM LILLY.  
               Clerk to Collector, JOHN CANNING.  
 Fogo — Sub-collector, JAMES M. WINTER.  
 Greenspond — Ditto, LORENZO MOORE.  
 La Poile — Ditto, THOMAS READ.  
 Lamaline — Ditto, JAMES WINTER.  
 Bay Bulls — Preventive Officer, JOHN L. MCKIE.  
 St. Mary's — Ditto, H. MURCH.

## Labo Department.

### SUPREME COURT.

Chief Justice, Hon. THOMAS NORTON.  
 Assistant Judges, { " A. W. DES BARRES.  
                           " JAMES SIMMS.  
 Attorney General, The Hon. E. M. ARCHIBALD.  
 Solicitor General, " H. A. EMERSON.  
 Queen's Counsel, " W. B. ROW, Hon. B. ROBINSON.  
 Chief Clerk & Regr. of Supreme & C. C. Courts, J. H. DAWSON.  
 " " " N. C. Court, JOHN STARK.  
 " " " S. C. Court, GEORGE SIMMS.  
 Crier of Supreme Court and Tipstaff, JAMES LAMBARD.

## LAW DEPARTMENT—CONTINUED.

## BARRISTERS OF THE SUPREME COURT—ST. JOHN'S.

Hon. ATTORNEY GENERAL,	H. W. HOYLES,
“ SOLICITOR GENERAL,	F. B. T. CARTER,
“ W. B. ROW, Q.C.	J. S. STEVENS,
“ B. ROBINSON, Q.C.	JAMES SIMMS, Jr.
C. SIMMS,	R. R. W. LILLY,
R. R. WAKEHAM,	P. F. LITTLE,
G. H. EMERSON,	HARCOURT MOONEY.
THEOPHILUS STEWART,	

## HARBOUR GRACE.

A. MAYNE, R. ANDERSON, J. HAYWARD,

High Sheriff, BENJAMIN G. GARRETT.

Deputies, { JOHN STEVENSON, Northern District.  
                  { PATRICK MORRIS, Southern District.

## MASTERS IN CHANCERY.

Hon. B. ROBINSON, Q. C., G. H. EMERSON, C. SIMMS,

## VICE-ADMIRALTY COURT.

Judge, The CHIEF JUSTICE for the time being.  
Registrar, P. W. CARTER. Marshal, CHRISTOPHER AYRE.

## NOTARIES PUBLIC.

CHARLES SIMMS, M.C.	F. B. CARTER,
Hon. W. B. ROW, Q.C.	PETER ROGERSON,
ROBERT ROBERTS WAKEHAM,	W. J. WARD,
JOHN BOYD,	JAMES SIMMS, Jr.
Hon. BRYAN ROBINSON, Q.C.	R. R. W. LILLY,
G. H. EMERSON,	STEPHEN J. DANIEL,
HUGH W. HOYLES,	K. McLEA, Jr.
THEOPHILUS STEWART,	EDWARD MORRIS,
ROBERT PROWSE,	H. C. WATTS,
G. F. BOWN,	G. J. HOGSETT.
HENRY DEVEREUX,	

## OUT-FORTS.

Harbour-Grace — ANDREW DRYSDALE, J. HAYWARD.  
 Carbonear — T. NEWELL.  
 Ferryland — ROBERT CARTER.  
 Twillingate — THOMAS M. LYTE, JOHN PEYTON.  
 Burin — WILLIAM HOOPER.

## Clergy.

## CHURCH OF ENGLAND.

The Lord Bishop of Newfoundland (including the Bermudas)  
 Right Rev. EDWARD FEILD, D.D.  
*Late Fellow of Queen's College, Oxford, 1844.*

## CHAPLAINS TO THE BISHOP.

Rev. T. F. H. BRIDGE, M.A., Rev. C. BLACKMAN, M.A.

## DEANERY OF AVALON.

Rural Dean of Avalon, Ecclesiastical Commissary and Vicar-General to the Bishop, Rev. T. F. H. BRIDGE, M.A.

Rector of St. John's, Rev. T. F. H. BRIDGE, M.A.

Minister of St. Thomas's Church, Rev. C. BLACKMAN, M.A.

Out-Harbours of St. John's Mission }  
 Rev. H. TUCKWELL,  
 " B. JONES,  
 " F. W. TREMLETT,  
 " G. ALDINGTON, Pouch  
 " O. ROUSE. [Cove.]

Harbour Grace, Rev. JOHN CHAPMAN.

Carbonear, Rev. J. C. HARVEY.

Bay de Verds and Grates Cove, Rev. J. ROBERTS.

Bay Roberts, Rev. R. LOWELL, A.M.

Port-de-Grave, Rev. J. VICARS.

Bishop's Cove and Island Cove, Rev. J. KINGWELL.

Spaniards Bay and New Harbour, Rev. W. H. TAYLOR.

Brigus, Rev. GEORGE B. CARTER.

Belle Isle and South Shore of Conception Bay, Rev. B. FLEET.

Ferryland, Rev. H. H. HAMILTON, A.B.

Burin, (vacant.)

Harbour Beaufét, Isle of Valen, &c., Rev. W. JEYNES.

Harbour Britain, Fortune Bay, (vacant.)

The Burgoes and S.W. Shore, Rev. M. BLACKMORE.

St. George's Bay, Rev. W. MEEK.

Bellorum, Rev. T. B. POLDEN.

Hermitage Bay, Rev. J. MARSHALL.

## DEANERY OF TRINITY.

Rural Dean of Trinity and Ecclesiastical Commissary of Northern Division, (vacant.)

Trinity, (vacant.)

English Harbour, Salmon Cove, &c., (vacant.)

Heart's Content, Scilly Cove, &c., Rev. H. LIND.

Catalina, Rev. W. NETTEN.

Bonavista, Rev. T. M. WOOD.

King's Cove, Rev. B. SMITH.

Greenspond, Rev. J. GILCHRIST, A.B.

Twillingate, Rev. THOMAS BOONE.

Cape Shore, Rev. E. A. SALL.

Fogo, Rev. W. J. HOYLES.

Clergy.

## THEOLOGICAL INSTITUTION.

Principal, Rev. C. BLACKMAN, A.M.  
 Lecturer in Divinity, Rev. H. TUCKWELL.  
 Lecturer in Classical Literature, Rev. B. JONES.  
 Students and Lay Readers, {  
     Mr. KINGWELL,  
     " SAUNDERS,  
     " A. BAYLY,  
     " T. W. BLACKMAN, B.A.

## COLLEGIATE SCHOOL.

Head Master, Rev. H. TUCKWELL, Assistant do. Rev. B. JONES.

## NEWFOUNDLAND CHURCH SOCIETY.

Patron,  
 President, Right Rev. the LORD BISHOP.  
 Vice-Presidents, The RURAL DEANS.  
 Treasurer, Hon. WILLIAM THOMAS.  
 Honorary Secretary, The Rev. T. F. H. BRIDGE, A.M.

## ROMAN CATHOLIC.

District of St. John's, { Right Rev. M. A. FLEMING, Vicar  
 Extending from Petty      Apostolic, &c.  
 Harbour to Ferryland, { Rev. J. FORRISTAL,  
                                   Rev. — O'DONNELL.  
 Portugal Cove, Rev. P. O'CONNOR.  
 District of Brigus { Very Rev. D. MACKIN, V.G.  
                           Rev. E. O'KEEFE, Harbour Main.  
 District of Harbour Grace { Very Rev. C. DALTON,  
                                   Rev. J. CUMMING,  
                                   Rev. JAMES GLEESON.  
 District of Northern Bay, Rev. B. DUFFY.  
 District of King's Cove { Rev. T. WALDRON,  
                                   Rev. J. SCANLAN.  
 District of Tilton Harbour, Rev. P. WARD.  
 District of Bay Bulls, Rev. P. CLEARY.  
 District of Ferryland { Rev. J. MURPHY, Fermeuse.  
                               Rev. — RYAN, Ferryland.  
 District of Trepassey, Rev. — O'NEIL.  
 District of St. Mary's, Rev. K. WALSH.  
 District of Placentia, Rev. P. NOWLAN, Rev. W. FORISTAL.  
 District of Merasheen, Rev. E. TROY.  
 District of Burin { Rev. M. BIRNIE,  
                           Rev. M. CULLEN.

**Clergy.**

**CHURCH OF SCOTLAND.**

**St. Andrew's Church, St. John's, (vacant.)**

**Minister of the CONGREGATIONAL CHURCH, at St. John's,**

**Rev. D. D. EVANS.**

**WESLEYAN MISSIONARIES.**

**Rev. R. WILLIAMS, St. John's, (Chairman of the Newfoundland District.)**

- " **J. BREWSTER, Assistant to ditto.**
- " **A. NIGHTINGALE, Supernumerary.**
- " **W. FAULKNER, Harbour Grace.**
- " **J. SNOWBALL, Carbonear.**
- " **T. ANGUIN, Blackhead.**
- " **JAMES NORRIS, Island Cove.**
- " **G. ELLIDGE, Port-de-Grave.**
- " **J. S. ADDY, Brigus.**
- " **J. INGHAM, Bonavista.**
- " **S. W. SPRAGUE, Burin.**
- " **J. ENGLAND, Trinity.**
- " **J. S. PEACH, Green Bay.**

**LAYMEN LICENSED TO CELEBRATE MARRIAGE.**

[Under Colonial Act 3, Wm. 4. cap. 10.]

- W. G. BRADSHAW, J.P., Placentia.**
- W. SWEETLAND, J.P., Bonavista.**
- J. TILLY, J.P., Hants Harbour.**
- T. E. GADEN, J.P., Harbour Britain.**
- J. PEYTON, J.P., Twillingate.**
- H. BUTLER, J.P., Lamaline.**

**SUPERINTENDENT OF SCHOOLS OF N.S. SOCIETY.**

**Rev. T. F. H. BRIDGE, M.A.**

### Military Establishment.

Commandant, **P. W.** Lieut.-Col. R. LAW, K.H., Commanding  
 Royal Newfoundland Companies.  
 Fort-Major, Lieutenant MASON, R.N.C.  
 Assistant Commissary General, T. C. WEIR.  
 Deputy Assistant Commissary General, W. ROBINSON.

#### ROYAL ARTILLERY.

**P** Lieut.-Colonel Commanding, H. R. WRIGHT.  
 Lieutenants: R. W. BRETTINGHAM, G. ROTTON.

#### ROYAL ENGINEERS.

**P** Lieut.-Col. Commanding, A. W. ROBE. Lieut., C. R. BINNEY.

#### ROYAL NEWFOUNDLAND COMPANIES.

**P. W.** Lieutenant-Colonel Commanding, ROBERT LAW, K.H.,

Captains, {  
 W. BINDON, Major  
 R. SAUNDERS.  
 H. B. CHAMBERS,

Lieutenants, {  
 P. W. MASON.  
 J. NICHOLS,  
 W. JENKINS,  
 J. GILLESPIE,  
 W. S. BOLD,  
 — MARRIOT.

Ensigns, {  
 W. J. COEN,  
 M. PETRIE:  
 One vacant.

Acting Paymaster, Lieutenant W. S. BOLD.  
 Adjutant, and Acting Quarter-Master, Lieut. W. JENKINS.  
 Surgeon, J. F. PINK, Assistant ditto, J. C. MARTIN.  
 Agent, Sir J. KIRKLAND, Knt., 80, Pall Mall, London.

#### CIVIL DEPARTMENTS OF THE ARMY.

Garrison Chaplain, Rev. C. BLACKMAN, A.M.  
 Deputy Ordnance Storekeeper and Barrack Master, G. WINTER.  
 Ordnance Clerk, NOEL HANMER.  
 Clerk of the Works, J. BAKER.

Respective Officers {  
 of the Ordnance, { Commanding Royal Engineer.  
 Commanding Officer of Royal Artillery.  
 Deputy Ordnance Storekeeper.

Commissariat Issuer, J. STICKLEY.  
 Ditto Conductor, J. THOMPSON.

NOTE.—**P.** denotes Peninsula; **W.** Waterloo.



**COMMANDER-IN-CHIEF OF HER MAJESTY'S FLEET,**

on the West India and North American station,

Vice-Admiral Sir F. W. AUSTEN, K. C. B.

Commodore at Jamaica, Captain DANIEL PRING.



**Miscellaneous.**

**POST OFFICE.**

Post Master, WILLIAM L. SOLOMON.

Assistant, Miss E. SOLOMON.

Occasional ditto, on arrival of Mails, E. WINTON.

HER MAJESTY'S MAILS for the North American Colonies and the United States are conveyed in Steam Packets, (hereafter named), which sail from Liverpool for HALIFAX and BOSTON TWICE in each of the months of April, May, June, July, August, September, October, and November, and ONCE in those of December, January, February, and March. The Mails are made up in London on the 3d and 18th of the former named months, and on the 3d of the latter, (except when those days fall on a Sunday, then on the Monday), and the Steamers start from Liverpool on the day following, immediately on the arrival of the Mails.

On the average, the outward passage occupies about twelve, and the homeward ten and a-half days. The average course of the Post between England and this colony is from 40 to 42 days.

**NAMES OF STEAM-PACKETS, AND THEIR COMMANDERS.**

BRITANNIA....	Captain JOHN HEWITT,
CALEDONIA....	" E. G. LOTT,
ACADIA.....	" WILLIAM HARRISON,
CAMBRIA.....	" C. H. E. JUDKINS,
HIBERNIA.....	" ALEXANDER RYRIE.

The charge for Passage (including Provisions, except Wines, &c.) to Boston or Halifax, is 38 guineas. Steward's Fee, 1 guinea.

The Newfoundland Mails are conveyed to and from Halifax by the Royal Mail Steam-packet UNICORN, Captain MEAGHER, (except in the months of January, February, and March, when they may be conveyed in a sailing vessel.) The Steamer leaves Halifax for St. John's immediately after the arrival of the homeward bound Mail (from Boston), and after remaining there seventy-two hours from the time of arrival, proceeds back to Halifax with the return Mails, calling at Sydney, C.B. On the average the passage is performed in about 3½ days.

## Transatlantic Steam Navigation.

The following calculations (copied from the *Liverpool Standard* and believed to be accurately worked) of the comparative distances and also between Boston and Liverpool, *via* Halifax, may be valuable to such persons as may be desirous of comparing the length of the passages respectively out and home, of the transatlantic steam-ships running between those ports.

	MILES.
<b>FROM BOSTON TO HALIFAX.</b>	
From Boston Wharf to Cape Ann .....	36
“ Cape Ann to Cape Sable (course N. 78 deg. E.) ...	222
“ Cape Sable to Sambro Light (N. 55 deg. E.) .....	111
“ Sambro to Halifax .....	18
	—387
<b>FROM HALIFAX TO LIVERPOOL.</b>	
From Halifax Wharf to Sambro .....	18
“ Sambro to Cape Clear (N. 79 deg. E.) .....	2207
“ Cape Clear to Tuskar .....	135
“ Tuskar to Holyhead .....	99
“ Holyhead to Liverpool .....	74
	—2524
Total from Boston to Liverpool, <i>via</i> Halifax .....	2911
<b>FROM NEW YORK TO BRISTOL.</b>	
From New York to Cape Clear (N. 79 deg. 30 min. E.) ..	2754
“ Cape Clear to Lundy Island (S. 85 deg. E.) .....	182
“ Lundy Island to Anchorage, King's-road .....	74
	—3010
<b>FROM NEW YORK TO LIVERPOOL.</b>	
From New York to Cape Clear .....	2754
“ Cape Clear to Liverpool, as above .....	299
	—3053
<b>FROM HALIFAX TO LIVERPOOL, <i>via</i> ST. JOHN'S NEWFOUNDLAND.</b>	
From Halifax to Cape Race (N. 75 E.) .....	513
“ Cape Race to St. John's .....	55
“ St. John's to St. David's Head (N. 82 E.) .....	1860
“ St. David's Head to Liverpool .....	200
Total from Halifax to Liverpool, <i>via</i> St. John's .....	—2628
St. John's to Sydney, C.B. ....	354
Sydney to Halifax .....	235

Taking, therefore, the direct course in each case, as by the calculations given, we have the following results:—

The voyage from New York to Liverpool is 43 miles longer than from New York to Bristol. From New York to Liverpool is longer than from Halifax to the same port by 529 miles. From New York to King's-road, near Bristol, where the Great Western anchors, is 99 miles further than from Boston, *via* Halifax, to Liverpool; and that the voyage from Liverpool to Halifax, *via* St. John's, is only 104 miles longer than the *direct* passage.

SAVINGS' BANK.

[Established 1834, by Act 4, W. 4. c. 10.]

GOVERNORS:

The Members of Her Majesty's Executive Council, and an equal number of the Members of the General Assembly including the SPEAKER.

Cashier, The Hon. COLONIAL TREASURER.

Clerk, E. MORRIS.

To show the great advantage of this excellent Institution to the frugal and industrious poor, it should be mentioned that, in addition to three per cent. interest on the amount of deposits, a BONUS of one per cent. for one year, is given on sums not exceeding Fifty Pounds, that had been deposited twelve months previous to the close of the year's account.

STATEMENT OF THE PROGRESS OF THE SAVINGS BANK FROM THE YEAR 1836.

Years.	Amount of Deposits in the Bank at the end of each year.	Amount of Loans & Notes at the end of each year.	Interest received each year.	Interest paid each year.	Disbursements each year.	Profit each year.
1836	£3334 12 4	£3125 15 7	£182 17 4	£27 16 8	£37 5 8	£101 19 5
1837	3020 9 11	2759 15 4	186 1 8	86 16 0	42 2 4	57 2 9
1838	5035 10 9	4923 4 0	324 9 10	118 5 9	44 9 5	148 14 8
1839	5652 2 5	5462 8 10	298 6 1	138 9 4	61 0 7	98 16 2
1840	7132 0 11	7481 18 8	428 16 5	186 8 1	55 19 6	186 8 10
1841	7982 12 5	8620 6 3	446 12 6	280 18 3	43 19 11	121 14 4
1842	12501 6 8	11540 17 7	663 7 5	253 19 4	103 18 2	305 9 11
1843	17878 16 2	19028 1 7	953 2 6	399 0 2	83 15 3	470 7 1
1844	29846 10 11	18046 16 9	1627 2 2	774 14 8	110 18 9	741 8 9

NOTE.—The Accounts for the year 1844 were kept in Currency, those of the preceding years in Sterling.

Standard distances  
ool; and  
able to  
of the  
m-ships

MILES.

36  
22  
11  
18  
—387

18  
07  
35  
99  
74  
—2524  
2911

54  
2  
4  
—3010

—3053  
LAND.

—2628

calcu-  
than  
nger  
York  
is 99  
that  
104

## Commissioners of Public Boards.

### COLONIAL BUILDING.

Hon. J. CROWDY, Chairman, " T. BENNETT, " W. THOMAS, " W. B. ROW, " P. MORRIS, Clerk, J. W. CROWDY.	Hon. R. JOB, " L. O'BRIEN, THOMAS GLEN, M.G.A., P. McBRIDE. Architect, JAMES PURCELL. Inspector, P. KOUGH.
--	---

### ST. JOHN'S ACADEMY—[CASTLE RENNIE.]

Visitor, His Excellency the GOVERNOR.

#### Directors:

Hon. the CHIEF JUSTICE, " J. CROWDY, " W. THOMAS, " P. MORRIS, " T. BENNETT, Senior Master, C. D. NEWMAN.	Hon. R. JOB, " J. KENT, " J. STUART, J. ROCHFORD, M.D. Junior ditto, J. V. NUGENT. Secretary, HARCOURT MOONEY.
--	---

### FOR SUPERINTENDING REPAIRS OF GOVERNMENT HOUSE, &c.

Hon. J. CROWDY, " W. THOMAS, " L. O'BRIEN, R. CARTER, Esq.,	}	M.E.C. M.G.A.
--	---	------------------

### PILOTS.

J. B. BULLEY, Hon. P. MORRIS, " L. O'BRIEN,	T. WILLIAMS, N. STABB.
---	---------------------------

### TABLES OF RATES OF PILOTAGE IN AND OUT OF THE PORT OF ST. JOHN'S.

*On Merchant Shipping.*

	TONNAGE.		RATE OF PILOTAGE, CURRENCY.
	NEW.	OLD.	
Vessels under.....	80	100	£2 0 0
" From.....	80 to 130	100 to 150	2 10 0
" ".....	130 to 180	150 to 200	3 0 0
" ".....	180 to 230	200 to 250	3 5 0
" ".....	230 to 300	250 to 300	3 10 0
Upwards.....	300	300	4 0 0

Coasting vessels half the above in proportion to tonnage.

#### *Her Majesty's Ships of War.*

Under 6th Rate.....	£2 10 0
4th, 5th, and 6th Rates.....	3 10 0
Ships of the Line, 1st, 2nd, and 3rd Rates.....	5 0 0

COMMISSIONERS OF PUBLIC BOARDS—[CONTINUED.]

BOARD OF CONTROL—[OF ROADS, &c.]

Hon. T. BENNETT, Chairman, THOMAS ROW,  
 J. B. BULLEY, Secretary, RICHARD HOWLEY.  
 H. P. THOMAS, Surveyor and Inspector, W. MAGILL.

RELIEF OF THE POOR.

Rev. T. F. H. BRIDGE, Rev. R. WILLIAMS,  
 Rev. D. D. EVANS, Rev. J. FORRISTAL.

COMMISSIONERS OF LIGHT HOUSES.

Hon. T. BENNETT, Chairman, Hon. P. MORRIS,  
 H. P. THOMAS, N. STABB.  
 Hon. T. RIDLEY, A. SHEA, Secretary.

KEEPERS :

Cape Spear, T. CANTWELL. Harbour Grace Island, R. OKE.  
 Fort Amherst, P. ROCHE. Cape Bonavista, J. WHITE.

TABLE OF LIGHT DUES.

3d. per Ton on all vessels entering any Port or Harbour of the Colony, except Coasting and Sealing Vessels; but not to be levied more than twice in any one year.

COASTING AND SEALING VESSELS.

Of 90 Tons and upwards.....	£1 0 0	per annum.
Of 60, and under 90 Tons.....	0 15 0	“ “
Under 60 Tons.....	0 10 0	“ “

DESCRIPTION OF THE LIGHTS.

FORT AMHERST.—This is a Stationary Light, on the Southern head of the entrance of St. John's harbour.

CAPE SPEAR.—This is a powerful Revolving Light, burning at an elevation of 275 feet above the level of the sea, and showing a brilliant flash at intervals of one minute. In clear weather it may be seen from sea, in any direction, at the distance of thirty-five miles.

HARBOUR GRACE.—This is a powerful Fixed Light, situate on "Harbour Grace Island," in Conception Bay, extending Eastwardly or seaward, in a direction by Compass from North to South West.

BONAVISTA.—This light revolves every two minutes, showing a red and white flash alternately; and is elevated 150 feet above the level of the sea.

ST. PETER'S.—A Light House has been erected by the French Government on "Galantry Head," near Cape Noir. The Light is a fixed one. It burns at an elevation of about 210 feet above the level of the sea. It may be seen (in passing by the S.) from W.N.W. to N.N.E., at the distance of 18 or 20 miles in clear weather. In passing by the N., it is shut in by high land from N.N.E. to W.N.W.

It is in contemplation to erect a Light House on Cape Pine.

## Officers of the several Electoral Districts.

### ST. JOHN'S.

#### STIPENDIARY MAGISTRATES.

P. W. CARTER, St. John's | P. DOYLE, St. John's  
C. SIMMS, St. John's | J. L. McKIE, Bay Bulls.

#### JUSTICES OF THE PEACE.\*

Hon. T. BENNETT, | PETER McBRIDE,  
" R. JOB, | Hon. WALTER GRIEVE.  
N. GILL, | T. B. JOB, M.G.A.  
R. CARTER (R.N.), M.G.A. | Hon. L. O'BRIEN.

Clerk of the Peace and Coroner, A. HOGSETT.  
Coroner (Bay Bulls), M. WILLIAMS.  
High-constable, J. FINLAY. Gaoler, JAMES FERGUS.  
Medical Attendant on Gaol, E. KIELLEY.

Inspectors of Pickled Fish { T. WILLIAMS, W. MAGILL,  
J. PITTS, A. GRAHAM,  
D. DWYRE, W. McPHERSON,  
J. CURTIS, Jr., Portugal Cove.

Assayer of Weights and Measures, J. FINLAY.  
District Surgeon, Dr. CARSON.  
General Supervisor of Streets, Lieut. R. CARTER, R.N., M.G.A.

#### BOARD OF ROAD COMMISSIONERS.

JAMES DOUGLAS, Chairman, | Hon. WALTER GRIEVE,  
Hon. PATRICK MORRIS, | CHARLES SIMMS,  
" JOSEPH NOAD, | JOHN HARDING,  
" C. F. BENNETT, | PATRICK KOUGH,  
" JOHN KENT, | SIMON MORRIS, M.G.A.  
" BRYAN ROBINSON, | PATRICK MULLOWNEY,  
" ROBERT JOB, | JOHN O'MARA,  
" LAWRENCE O'BRIEN, | PATRICK L. POWER,  
NICHOLAS GILL, | DAVID REID.  
THOMAS GLEN, M.G.A.

Surveyor, T. BYRNE. Inspector, EDWARD TOBIN.

#### BOARDS OF EDUCATION.

##### PROTESTANT.

The Rev. T. F. H. BRIDGE, | The Rev. JOHN FORRESTAL,  
Rev. | Hon. P. MORRIS,  
" RICHARD WILLIAMS, | " JOHN KENT,  
" D. D. EVANS, | " L. O'BRIEN,  
Hon. W. B. ROW, | J. DILLON, M.G.A.  
H. P. THOMAS, | PATRICK KOUGH,  
R. HOWLEY.

##### ROMAN CATHOLIC.

\* The Members of Her Majesty's Council, and the Judges of the Supreme Court, are all in the Commission of the Peace for the Central, Northern, and Southern Districts of the Island.

## DISTRICT OF ST. JOHN'S—CONTINUED.

## DIRECTORS OF ST. JOHN'S HOSPITAL.

Hon. R. JOB, Chairman,	B. SCOTT,
W. RICHARDS, Vice-President,	J. BARRON,
Hon. T. BENNETT,	P. McBRIDE,
“ W. GRIEVE,	R. HOWLEY,
“ JOHN STUART,	W. WARREN, Jr.
“ L. O'BRIEN,	THOMAS ROW,
DUGALD McKELLAR,	THOMAS ALLEN.
N. STABB,	

Surgeon, EDWARD KIELLEY. Secretary, A. SHEA.

## DIRECTORS OF LUNATIC ASYLUM.

## TRUSTEES OF BOTANIC GARDEN.

Hon. W. THOMAS, | Hon. JOHN STUART.

## DISTRICT OF CONCEPTION BAY.

## STIPENDIARY MAGISTRATES.

Harbour-Grace, T. DANSON,	Carbonear, J. POWER,
“ R. J. PINSENT,	Brigus, C. COZENS.

## JUSTICES OF THE PEACE.

W. STIRLING,	J. STARK,
J. GREEN,	R. BROWN,
R. PACK,	JOHN MUNN, M. G. A.
R. RANKIN,	NICHOLAS MOLLOY.
T. HUTCHINGS,	

Clerks of the Peace { Harbour-Grace, A. MAYNE,  
Brigus, W. T. STENTAFORD.

Coroners, { Harbour-Grace, J. STARK.  
Brigus, J. GREEN.  
Western Bay, W. BENNETT.

High Constable, A. WEBBER. Gaoler, RICHARD BRACE.  
Medical Attendant on Gaol, W. STIRLING.  
Deputy Surveyor of Crown Lands, J. GREEN, (Brigus.)

Customs { Harbour-Grace—Sub-collector and Acting Warehouse-  
keeper, E. E. BROWN.  
Brigus—Sub-collector, J. GREEN.  
Carbonear—ditto, D. BETHUNE.

Inspectors of Pickled Fish { Harbour-Grace, H. STOWE,  
Carbonear, SIMON LEVI.  
Brigus, G. BURSELL.

## DISTRICT OF CONCEPTION BAY—CONTINUED.

## BOARDS OF ROAD COMMISSIONERS.

Harbour-Main (from Holyrood to Salmon Cove Bridge)—

JOHN MURPHY, C., Holyrood	JAMES WOODFORD,
PETER EZEKIEL,	JOHN BYRNE.
PATRICK STRAPP,	

Brigus (Salmon Cove Bridge to Spaniard's Bay Gut Bridge)—

JOHN LEAMON, C.	JAMES KEEPING,
NATHANIEL MUNDEN,	JAMES CORMACK.
JAMES HEARN,	

Harbour-Grace—

ANDREW DRYSDALE, C.,	Harvey Street :
D. GREEN,	J. L. PRENDERGAST,
R. HANRAHAN,	R. J. PINSENT,
F. LYNCH,	W. STIRLING.
M. GOSS,	

Carbonear (South Side Main Road to Spout Cove)—

THOMAS GAMBLE, C.,	WILLIAM BROWN,
W. W. BEMISTER,	JOHN CASEY,
JOHN MACARTHY,	G. FORWARD.
JOHN RORKE,	

Western Bay (Spout Cove to Main Brook)—

WILLIAM BENNETT, C.,	RICHARD RANKIN,
DAVID BRANSFIELD,	HENRY THOMPSON.
JAMES PENNY,	

Main Brook to Bay-de-Verds—

THOMAS HUTCHINGS, C.,	— MOORE,
— O'NEILL,	RICHARD RANKIN.

## BOARDS OF EDUCATION.

Brigus—

PROTESTANT.	ROMAN CATHOLIC.
Rev. G. B. CARTER,	Very Rev. D. MACKIN,
Rev. J. S. ADDY,	Dr. MOLLOY,
ROBERT BROWN,	R. MACKEY,
JOHN LEAMON,	JOHN MURPHY,
W. S. MILLS,	PATRICK STRAPP,
JOSHUA GREEN,	RICHARD MANDEVILLE,
— WELLS.	Rev. E. O'KEEFE.



## DISTRICT OF CONCEPTION BAY—CONTINUED.

## BOARDS OF EDUCATION.

## Harbour Grace—

PROTESTANT.	ROMAN CATHOLIC.
Rev. JOHN CHAPMAN,	Very Rev. C. DALTON,
“ GEORGE ELLIDGE,	DANIEL GREEN,
Hon. T. RIDLEY, M.G.A.	ROGER HANRAHAN,
WILLIAM STIRLING,	WILLIAM CORMACK,
R. ANDERSON,	ARTHUR THOMEY,
ALFRED MAYNE.	PATRICK DEVEREUX,
	F. LYNCH.

## Carbonear—

PROTESTANT.	ROMAN CATHOLIC.
Rev. J. C. HARVEY,	Rev. B. DUFFY,
“ J. S. ADDY,	ED. HANRAHAN, M.G.A.
“ W. H. HAMILTON,	JAMES POWER,
“ JAMES ENGLAND,	JOHN McCARTHY,
W. W. BEMISTER,	Dr. WRIGHT,
JOHN RORKE,	Rev. JAMES GLEESON,
EDWARD PIKE.	WILLIAM BROWN.

## COMMISSIONERS OF GRAMMAR SCHOOLS.

## Harbour Grace—

Hon. THOS. RIDLEY, M.G.A.	ALFRED MAYNE,
JOHN MUNN, M. G. A.	DANIEL GREEN,
J. L. PRENDERGAST, M.G.A.	W. DONETHY.
W. STIRLING,	Professor, J. T. RODDICK.

## Carbonear—

ED. HANRAHAN, M.G.A.	Dr. WRIGHT,
JAMES POWER,	JOHN RORKE,
JOHN McCARTHY,	THOMAS GAMBLE.
W. W. BEMISTER,	Professor, A. O'DONAVAN.

## DISTRICT OF TRINITY BAY.

## STIPENDIARY MAGISTRATE—B. SWEETLAND.

## JUSTICES OF THE PEACE.

W. KELSON,	R. OLLERHEAD,
J. REGAN,	A. HACKET,
J. QUINTZ,	F. K. HEPBURN,
J. TILLY,	A. BREMNER,
J. MEW,	W. R. GILL.

## DISTRICT OF TRINITY BAY—CONTINUED.

Clerk of the Peace R. BAYLY. Coroner, B. SWEETLAND.  
 Gaoler, C. GRANGER.  
 Deputy Surveyor of Crown Lands, B. SWEETLAND.  
 Sub-collector of Customs, R. BAYLY.

Inspectors of Pickled Fish { Trinity, J. HART.  
 Hants Harbour, M. TILLY.  
 Hearts Content, J. WISEMAN.

## BOARDS OF ROAD COMMISSIONERS.

Old Perlican (from Grates Cove to Hant's Harbour)—

STEPHEN MARCH, C.		THOMAS COOPER,
JOHN COLLINS,		S. RENDELL.

Heart's Content (from Hant's Harbour to Heart's Delight)—

ROBERT OLLERHEAD, C.,		GEORGE AYRE,
RICHARD UNDERHAY,		JOHN BEMISTER,
MOSES MOORES,		JOHN KELLAND.
JOHN HOPKINS,		

Trinity Bay North—

W. STONEMAN, C.,		ROBERT BAYLY,
W. GILL,		WILLIAM PENNY.
F. K. HEPBURN,		

Road from New Harbour to Dildo Cove—

CHARLES NEWHOOK,		ANDREW HACKET.
------------------	--	----------------

## BOARDS OF EDUCATION.

Trinity Bay North—

PROTESTANT.		ROMAN CATHOLIC.
Rev. J. NORRIS,		Rev. J. SCANLAN,
F. K. HEPBURN,		M. BRINE,
A. BREMNER,		JOHN MURPHY,
W. KELSON,		P. MURPHY,
B. SWEETLAND,		JOHN EAGAN,
R. BAYLY.		JOHN POWER.

Trinity Bay West (Protestant) —

Rev. H. LIND,		C. NEWHOOK,
R. OLLERHEAD,		J. WISEMAN,
J. HOPKINS,		JOHN BEMISTER.
R. UNDERHAY,		

Trinity Bay South (Protestant) —

Rev. H. LIND,		WILLIAM MEADOWS,
Rev. J. INGHAM,		GEORGE AYRE,
STEPHEN MARCH,		JOHN TILLY.

## DISTRICT OF BONAVISTA BAY.

STIPENDIARY MAGISTRATE, W. SWEETLAND.

## JUSTICES OF THE PEACE.

S. MIFFLEN,  
N. SMITH,  
J. COX,  
J. T. OAKLEY,  
W. BROWN,  
J. SKELTON,

J. WINTER, M.D.  
T. WILLS,  
LORENZO MOORE,  
JOSEPH SHEARS,  
J. STEWART,  
D. CANDOW.

Clerk of the Peace, T. GAYLOR.

Coroner, Dr. J. WINTER, (Greenspond.)

Deputy Surveyor of Crown Lands, T. GAYLOR.

Sub-collector of Colonial Revenue, L. MOORE, (Greenspond.)

Inspectors of Pickled Fish { T. GAYLOR, Bonavista.  
N. SMITH, Greenspond.  
J. CONNORS, King's Cove.

Keeper of Light House on Cape Bonavista, J. WHITE.

## BOARDS OF ROAD COMMISSIONERS.

Bonavista to Catalina—

WILLIAM SWEETLAND, C. | ARCHIBALD ARNOTT,  
JOSEPH SHEARS, | ALEXANDER BREMNER.

Bonavista to King's Cove—

ARCHIBALD ARNOTT, C. | JAMES STEWART,  
WILLIAM SWEETLAND, | WILLIAM BROWN.  
JOSEPH SHEARS,

In and through King's Cove—

JAMES STEWART, WM. BROWN, JAMES LAWTON.

Keels to Broad Cove—

THOS. WALLEY, JAMES CONNORS, JOHN MURPHY.

Greenspond—

J. WINTER, M.D., THOS. WILLS, NATHANIEL SMITH.

Salvage—

JAMES OLDFORD, FREDERICK LASH.

Tickle Cove to Main Line from King's Cove—

D. CANDOW, J. SKEFFINGTON.

Tickle Cove to Open Hall—

D. CANDOW, J. SKEFFINGTON, T. FEWER.

Tickle Cove—

D. CANDOW, J. SKEFFINGTON.

## DISTRICT OF BONAVIDA BAY—CONTINUED.

## BOARDS OF ROAD COMMISSIONERS.

Cape Freels to Cobbler's Island—  
JOHN RIDOUT, W. HANDS, R. VINCENT.

Flower Island and Fool's Island—  
J. SPURRELL, W. KANE.

Swain's Island—  
T. BISHOP, J. WINSER, W. TILLER.

Deer Island—  
J. PICKETT, C. FELTHAM.

Flat Island—  
J. PIKE, J. SANSON.

Barrow Harbour and towards Salvage—  
WM. LANG, WM. DOYLE, H. WILLS.

Broad Cove to King's Cove—  
— LARKIN, — RYAN.

Plate Cove to Trinity Bay—  
D. CANDOW, J. SKEFFINGTON, W. PALMER.

## BOARDS OF EDUCATION.

## Bonavista Bay North—(Protestant)—

Rev. J. GILCHRIST,  
JOHN WINTER, M.D.  
THOMAS WILLS,  
NATHANIEL SMITH,

J. T. OAKLEY,  
WILLIAM DYER,  
ARCHIBALD CAMPBELL.

## Bonavista Bay South—

## PROTESTANT.

Rev. T. M. WOOD,  
Rev. THOMAS ANGUIN,  
JOSEPH SHEARS,  
ARCHIBALD ARNOTT,  
JAMES SAINT,  
JAMES STEWART,  
DAVID CANDOW.

## ROMAN CATHOLIC.

Rev. T. WALDRON,  
WILLIAM HARTERY,  
JAMES CONNORS,  
MICHAEL MURPHY,  
JOHN RYAN,  
JOHN MURPHY,  
JOHN SULLIVAN.

## DISTRICT OF FOGO.

STIPENDIARY MAGISTRATE, J. PEYTON, (Twillingate.)

## JUSTICES OF THE PEACE.

S. LAWLER,  
J. MARTIN,  
J. BELL,

J. SLADE, M.G.A.  
S. PROWSE.

Clerk of the Peace, A. A. PEARCE.  
Coroner, WILLIAM STIRLING, Jr., M.D.  
Sub-collector of Customs, S. PROWSE, (Twillingate.)

## DISTRICT OF FOGO—CONTINUED.

Litto of Colonial Revenue, J. M. WINTER, (Fogo.)  
Deputy Surveyor of Crown Lands, JOHN PEYTON.

Inspectors of Pickled Fish ( J. LUDLOW, Fogo.  
J. HODDER, Twillingate.

## BOARDS OF ROAD COMMISSIONERS.

Twillingate—

J. SLADE, M.G.A., S. PROWSE, JOHN PEARCE.

Fogo—

STEPHEN LAWLER, J. M. WINTER, P. BURKE.

## BOARDS OF EDUCATION.

PROTESTANT.

Rev. THOMAS BOONE,  
Rev. WM. MARSHALL,  
JOHN SLADE, M.G.A.  
JOHN PEYTON,  
J. COLBORNE,  
SAMUEL PROWSE,  
J. YOUNG.

ROMAN CATHOLIC.

Rev. P. WARD,  
JOHN BRINE,  
JOHN BURKE,  
PATRICK BURKE,  
PATRICK DWYRE,  
J. FITZGERALD,  
N. FITZGERALD.

Fogo (Protestant)—

Rev. W. J. HOYLES,  
STEPHEN LAWLER,  
JAMES M. WINTER,  
THOMAS HUMPHREYS,

JOHN BENNETT,  
JOHN FREKE, Sen.  
GEORGE E. RIDOUT.

## DISTRICT OF FERRYLAND.

STIPENDIARY MAGISTRATE, ROBERT CARTER.

## JUSTICES OF THE PEACE.

P. WINSER,  
J. W. SAUNDERS,

A. GOODRIDGE,  
M. MORRY.

Clerk of the Peace, H. G. CLOW.

Coroner, (vacant.)

Gaoler, F. GEARY.

Sub-collector of Customs, R. CARTER.

Deputy Surveyor of Crown Lands, R. CARTER.

## BOARDS OF ROAD COMMISSIONERS.

Bay Bulls to La Manche—

MICHAEL COADY, C.  
MICHAEL BRINE, Sen.  
THOMAS DRISCOLL,

THOMAS AVERY,  
JAMES CAREW.

Ferryland (La Manche to Renewse)—

M. MORRY, C.,  
JAMES H. CARTER,  
— NORRIS,

M. BRAZIL,  
E. POWER.

Renews to Trepassey—

J. W. SAUNDERS, C., A. GOODRIDGE, OWEN O'NEILL.

Trepassey to Renewse—

G. SIMMS, C., G. DUTTON, J. DEVEREUX.

## DISTRICT OF FERRYLAND—CONTINUED.

## BOARDS OF EDUCATION.

PROTESTANT.	ROMAN CATHOLIC.
Rev. H. H. HAMILTON,	Rev. J. MURPHY,
ROBERT CARTER,	MICHAEL DEVEREUX,
MATTHEW MORRY,	J. DOYLE,
J. H. CARTER,	J. CASHIN,
J. W. SAUNDERS,	E. CONDON,
A. GOODRIDGE,	H. O'NEILL,
P. P. LEMESSURIER.	PHILIP JACKMAN.

## Bay Bulls—(Roman Catholic)—

Rev. P. CLEARY,	MICHAEL DRISCOLL,
M. WILLIAMS,	J. BLACKLER,
M. COADY,	T. DRISCOLL.
W. DENN,	

## DISTRICT OF PLACENTIA AND ST. MARY'S.

## STIPENDIARY MAGISTRATES.

F. L. BRADSHAW, Placentia. H. MURCH, St. Mary's.

## JUSTICES OF THE PEACE.

G. SIMMS,	A. CHAMBERS,
J. MURPHY,	W. LUSH,
R. F. SWEETMAN,	PATRICK HOGAN.
W. G. BRADSHAW,	

Clerk of the Peace, L. COLLINS.

Coroner, (vacant.) Gaoler, L. COLLINS.

Sub-collector of Customs, W. G. BRADSHAW.

Preventive Officer of Customs, H. MURCH, St. Mary's.

Inspectors of Pickled Fish	{	T. WALSH, Placentia.
		G. LEMESSURIER, Isle of Valen
		M. SHEA, Little Placentia.
		E. HENNESSEY, Merasheen.

## BOARDS OF ROAD COMMISSIONERS.

## Barren Island—

ALEXANDER CHAMBERS, C., RICHARD MACKAY.  
NICHOLAS COADY,

## Merasheen—

A. CHAMBERS, C., JOHN MOVELLE, E. HENNESSEY.

## Presque to Oliver's Cove—

A. CHAMBERS, C., J. MASTERS, T. LENNARD.

## Isle of Valen—

A. CHAMBERS, C., G. LEMESSURIER, P. LENNARD.

## Great to Little Paradise—

JOHN POWER, JOSEPH GOLDSWORTHY.

## DISTRICT OF PLACENTIA AND ST. MARY'S—CONTINUED.

## BOARDS OF ROAD COMMISSIONERS.

Woody Island—

A. CHAMBERS, C., LEVI ANDREWS, R. WALSH

Oderin—

THOMAS COLLINS, NELSON BAILEY.

Great Placentia to Distress Cove—

LUKE COLLINS, C. | PATRICK HOGAN,  
W. G. BRADSHAW, | J. RIELLEY, (Herring Bay.)

Great to Little Placentia and Pond Head—

JAMES MURPHY, JOHN RIELLEY, ALEX. BURKE.

St. Mary's Harbour (Holyrood and Point La Haye)—

WILLIAM LUSH, ROBERT KENT, WILLIAM FEWER.

Harbour Buffett—

JAMES BUTLER, THOMAS E. COLLETT.

Harry Cove Point and Path from Limber Grass to Harry Cove—

G. CURTIS, MICHAEL DENN, EDWARD QUIGLEY.

To open a road from Branch to Distress Cove—

Branch.

T. NASH,  
N. POWER,  
J. ENGLISH.

Distress Cove.

J. DUFFY,  
W. WALSH,  
J. CONWAY.

## BOARDS OF EDUCATION.

Placentia—

PROTESTANT.

Rev. WM. JEYNES,  
F. L. BRADSHAW,  
W. G. BRADSHAW,  
WILLIAM TAYLOR,  
THOMAS E. COLLETT,  
ALEX. CHAMBERS,  
G. LEMESSURIER.

ROMAN CATHOLIC.

Rev. PELAGIUS NOWLAN,  
Rev. W. FORRISTAL,  
JOHN RIELLEY,  
JAMES FURLONG,  
PATRICK HOGAN,  
ANTHONY WHELAN,  
JOHN RIELLEY, Herring Bay.

St. Mary's (Roman Catholic)—

Rev. K. WALSH,  
JOHN WALSH,  
THOMAS PHELAN,  
JAMES FAGAN,WILLIAM BURKE,  
MICHAEL FAGAN,  
MICHAEL MURRAY.

TRUSTEES OF COMMERCIAL SCHOOL AT GREAT PLACENTIA.

Rev. P. NOWLAN,  
F. L. BRADSHAW,

PATRICK HOGAN.

Master, M. KELLY.

Average number of Scholars, 50.

## DISTRICT OF BURIN.

## STIPENDIARY MAGISTRATES.

W. HOOPER, Burin,		H. BUTLER, Lamaline.
J. BLACKBURN, Grand Bank.		

## JUSTICES OF THE PEACE.

C. BENNING, J. THORN, JAMES MORAN.

Clerk of the Peace, EDWARD MORRIS.  
 Coroner, (vacant.) Gaoler, E. GLYNN.  
 Sub-collector of Customs, T. BIRKETT.  
 Sub-collector of Colonial Revenue at Lamaline, J. WINTER.  
 Deputy Surveyor of Crown Lands, W. HOOPER.

Inspectors of Pickled Fish	{	T. DARBY, Burin.
		I. K. MOORE, St. Lawrence.
		G. H. EVANS, Grand Bank.

## BOARDS OF ROAD COMMISSIONERS.

Burin—

EDWARD MORRIS, C.,		JOHN MARSHALL,
CLEMENT BENNING,		JOHN POWER,
THOMAS DARBY,		JOSHUA FALLE.

Grand Bank and neighbourhood—

ED. EVANS, C.,		JOHN PATTEN,
GEORGE LAKE,		JAMES HICKMAN.

St. Lawrence to Lamaline, and from Great to Little St. Lawrence—

JOHN THORN, HENRY SLANEY.

Lamaline—

H. BUTLER, J. PITMAN, R. CAKE.

## COMMISSIONERS FOR THE ERECTION OF A BREAKWATER.

At Fortune.

GEORGE LAKE,  
 JOHN SNOOK,  
 THOMAS ROGERS,  
 JAMES HANDLEN,  
 JOHN KEATING,  
 JOHN SPENCE.

At Grand Bank.

JOHN PATTEN,  
 JOHN HICKMAN, sen.  
 JAMES HICKMAN,  
 GEORGE FORSEY, sen.  
 WM. EVANS, (planter.)  
 HENRY NICOLLE.

## BOARDS OF EDUCATION.

PROTESTANT.

THOMAS DARBY,  
 PHILIP HOLLETT,  
 WILLIAM HOOPER,  
 WILLIAM EVANS,  
 RICHARD FALLE,  
 JAMES MORAN.

ROMAN CATHOLIC.

Rev. MICHAEL BERNEY.  
 CLEMENT BENNING,  
 EDWARD MORRIS,  
 JOHN POWER,  
 PATRICK MORRIS,  
 HENRY SLANEY,  
 MATTHEW MARSHALL.



## DISTRICT OF FORTUNE BAY.

STIPENDIARY MAGISTRATE, THOMAS E. GADEN:

## JUSTICES OF THE PEACE.

J. NICOLLE,	F. ANTHOINE,
T. READ, (La Poile,)	J. B. COX, Jr., (Burgeo Islands,)
R. ANTHOINE,	THOS. RENOUF, (La Poile.)

Clerk of the Peace, P. TOCQUE. Coroner, T. E. GADEN.

Sub-collector of Customs, T. E. GADEN.

Sub-collector of Colonial Revenue, La Poile, T. READ.

Inspectors of Pickled Fish	J. TROOD, Harbour Britain.
	D. HARDY, Jersey Harbour.
	H. BAGG, La Poile.
	J. CLUITT, Bellorum.
	J. B. COX, sen., Burgeo Islands.

## BOARDS OF ROAD COMMISSIONERS.

Harbour Britain to Connaigre Bay and Hermitage Cove—

ANDREW ELLIS, C.	THOMAS E. GADEN,
JOHN CHAPMAN,	JOHN TROOD.
WILLIAM GALLOP,	

Bellorum to St. Jaque.—

Rev. THOMAS B. POLDEN,	JOHN GRANDY, Jr.
JOHN CLEWITT,	ROBERT LEE.

Burgeo—

Rev. M. BLACKMORE,	W. HENDERSON, Sen.
J. B. COX, Jr.	W. MATTHEWS.

## BOARD OF EDUCATION.

PROTESTANT.	ROMAN CATHOLIC.
The Episcopal Clergyman,	Rev. M. BERNEY,
THOMAS E. GADEN,	Rev. M. CULLEN,
Rev. THOMAS B. POLDEN,	P. BURKE,
WILLIAM GALLOP,	W. BURKE,
ANDREW ELLIS,	P. BURKE, Jr.
JOHN MARSHALL,	T. KINSHELA,
THOMAS STEVENS,	P. HEARN.

**Charitable Institutions****BENEVOLENT IRISH SOCIETY.**

[Founded in 1806.]

Patron,  
 President, Hon. J. KENT. Vice President, R. HOWLEY.  
 First Assistant, R. O'DWYER. Second Assistant, P. F. LITTLE.  
 Treasurer, P. KOUGH. Secretary, J. KAVANAGH.  
 Chairman O. A. School, E. MACASSEY.  
 Chairman of Review, G. HOGSETT.  
 Chairman of Charity, M. DEALY.  
 Secretary O. A. School, E. BOYLE.  
 [Elected 17th February, 1846.]

**DORCAS SOCIETY.**

President and Treasurer, Mrs. EVANS.  
 Secretary, Mrs. ROGERSON. Dispenser, Mrs. C. WINTON.

**MECHANICS' SOCIETY.**

President, T. MAHER. Vice-president, V. MERCHANT.  
 First Assistant, J. POWER. Second Assistant, E. KENNEDY.  
 First Treasurer, JOHN COADY. Second Treasurer, ———  
 Third Treasurer, A. QUIRK. Secretary, E. DELANEY.

**BRITISH SOCIETY.**

President, J. K. MOORE. Vice-President, ED. WARREN.  
 Treasurer, C. RANKIN. Secretary, J. RENDLE.  
 Medical Attendant, Dr. CARSON.

**NATIVES' SOCIETY.**

President, A. SHEA. First Vice-President, H. W. HOYLES.  
 Second Vice-President, G. H. DUNSCOMB.  
 Treasurer, T. G. MORRY. Chairman of Charity, P. DUGGAN.  
 Chairman of Review and Correspondence, H. B. THOMAS.  
 Secretary, P. H. CARTER. Assistant Secretary, N. GILL, Jr.

[Elected June, 1846.]

**ST. GEORGE'S SOCIETY.**

President, J. CLIFT. Senior Vice-President, G. J. HAYWARD.  
 Vice-President, R. PROWSE. Treasurer, Hon. W. THOMAS.  
 Secretary, G. CLAPP. Chairman of Committee of Charity, ———

[Elected June, 1846.]

**SCOTTISH SOCIETY.**

President, Hon. W. GRIEVE. Vice-president, Hon. J. STUART.  
 Treasurer, A. MILROY. Secretary, J. McWILLIAM.  
 Medical Attendant, Dr. CARSON.  
 Chairman of Committee of Charity, T. GLEN, M.G.A.

**TRINITY BENEFIT CLUB.**

[Instituted 1838.]

President, W. R. GILL. Secretary, R. BAYLEY.  
Treasurer, W. KELSON. Stewards, S. A GENT & P. MURPHY.

Total Number of Members, 100.

**AGRICULTURAL SOCIETY.**

[Established, Jan. 1842.]

Patron, \_\_\_\_\_

Officers Elected January, 1846 :

President, Hon. P. MORRIS.

Vice-Presidents { Hon. L. O'BRIEN,  
JAMES CLIFT,  
C. SIMMS,  
MICHAEL ALLEN.

Treasurer, Hon. R. JOB. Secretary, J. TEMPLEMAN.

Directors of Museum — Hon. J. NOAD, E. L. MOORE.

**LAW SOCIETY.**

Hon. ATTORNEY GENERAL,	F. B. T. CARTER.
Hon. SOLICITOR GENERAL,	J. HAYWARD,
Hon. W. B. ROW, Q.C.	J. S. STEVENS,
C. SIMMS,	J. SIMMS, Jr.
R. R. WAKEHAM,	R. R. W. LILLY,
Hon. B. ROBINSON, Q.C.	W. GREEN, (of Halifax, N.S.)
G. H. EMERSON,	H. MOONEY,
H. W. HOYLES,	P. F. LITTLE.

**CHAMBER OF COMMERCE—ST. JOHN'S.**

[Elected August, 1846.]

President, Hon. W. THOMAS.  
Vice-Presidents—Hon. W. GRIEVE, Hon. W. B. ROW.  
Treasurer and Secretary, R. PROWSE.

Hon. T. BENNETT,	T. B. JOB, M.G.A.
“ J. STUART,	Hon. L. O'BRIEN,
B. SCOTT,	J. B. HUTTON,
P. McBRIDE,	G. T. BROOKING,

**FOREIGN CONSULS RESIDENT IN THE COLONY.**

Spain..... A. HOGSETT, (V.C.)  
Prussia..... B. SCOTT, (C.)  
United States.. S. G. ARCHIBALD, (Consular Agent)

**ASSOCIATION OF UNDERWRITERS—ST. JOHN'S.**

Chairman, Hon. R. JOB. Treasurer, Hon. W. GRIEVE.

## Committee—

D. McKELLAR,	P. McBRIDE,
R. PROWSE,	R. HOWLEY,
W. WARREN, Jr.	Hon. J. STUART,
Hon. W. THOMAS,	" L. O'BRIEN,
" C. F. BENNETT,	

Agent, JOHN BOYD.

Commissioners—R. HOWLEY, R. PROWSE.

Surveyor, J. B. BULLEY.

## Assessors—

P. McBRIDE, Hon. L. O'BRIEN, W. WARREN, Jr.

**BRANCH BANK OF BRITISH NORTH AMERICA.**

[Opened for business February, 1837.]

## Local Directors:

Hon. R. JOB,	J. B. HUTTON,
P. McBRIDE,	G. T. BROOKING,

Manager, A. MILROY. Accountant, W. LASH.

Teller, G. H. COWAN.

**ST. JOHN'S GAS LIGHT COMPANY.**

[Incorporated by Act of Legislature, 1844.]

## Directors—

President, the Attorney General,	R. O'DWYER,
Vice-ditto, Hon. L. O'BRIEN.	B. SCOTT,
Hon. W. GRIEVE,	JOHN O'MARA.
C. AYRE,	

Treasurer and Secretary, E. L. MOORE.

**ST. JOHN'S WATER COMPANY.**

[Incorporated by Act of the Legislature, 1846.]

## Directors elected May, 1846:

Hon. W. THOMAS,	Hon. J. STUART,
" C. F. BENNETT,	" R. JOB,
" W. GRIEVE,	G. T. BROOKING.
" JOHN KENT,	
Treasurer, A. MILROY.	Secretary, W. J. WARD.

## Newspapers Published in the Colony.

WITH DAYS OF PUBLICATION.

ST. JOHN'S.

ROYAL GAZETTE, Tuesday.	
PUBLIC LEDGER, Tuesday and Friday.	
TIMES AND GENERAL COMMERCIAL GAZETTE, Wednesday and Saturday.	
NEWFOUNDLAND PATRIOT, Wednesday.	
NEWFOUNDLANDER, Monday and Thursday.	
STAR AND NEWFOUNDLAND ADVOCATE, Thursday.	
MORNING POST, Tuesday, Thursday, and Saturday.	
MORNING COURIER, Wednesday and Saturday.	
<b>CONCEPTION BAY.</b>	
CARBONAR SENTINEL, Tuesday.	
WEEKLY HERALD AND CONCEPTION BAY ADVERTISER, Wednesday.	

### Table of Colonial Duties.

*Payable on Goods and Merchandise Imported into Newfoundland over and above the Imperial Duties payable thereon. (By Act 9 Vict, cap. 1.)*

ARTICLES IMPORTED.	UNIT.	RATE OF DUTY.
Wines— (in bottles .....	per gal.	0 2 6
All other Wines .....	"	0 1 6
Brandy and Gin .....	"	0 2 6
Rum and Whiskey .....	"	0 0 6
Apples .....	per barrel	0 1 6
Salt Meat .....	per cwt.	0 1 6
Bread .....	"	0 0 3
Butter .....	"	0 2 0
Coals .....	per ton.	0 1 0
Bastard Sugar .....	per cwt.	0 5 0
Flour .....	per barrel	0 1 6
Oatmeal .....	"	0 0 6
Molasses .....	per gallon	0 0 1½
Salt, Implements and Materials for the Fisheries, Coin and Bullion, Horses & Cattle, Sheep and Pigs, Corn & Seeds, Vegetables, Manures, Books, Unrefined Sugar, Coffee	}	Free.
Lumber .....	per M.	0 2 6
Ton Timber and Scantling .....	per ton.	0 1 6
Shingles .....	per M.	0 1 0
Tea .....	per lb.	0 3 0
Refined Sugar .....	per cwt.	0 5 0
Cigars .....	per M.	0 10 0
Tobacco .....	per lb.	0 0 2
Stems of ditto .....	per cwt.	0 2 0
Ale, Porter, &c. .....	per cent.	10 0 0
Household Furniture .....	"	10 0 0
Non-enumerated Articles .....	"	5 0 0

## Length of Sessions of the General Assembly of Newfoundland.

YEAR.	FROM.	TO.	DAYS IN SESSION.	REMARKS.
1833	January 1	July 9	240	(Includes an adjournment of 38 days from May 30 to July 9.)
	July 12	August 1		
1834	January 29	June 2	161	
	August 26	Sept. 20		
1835	January 8	May 12	115	
1836	January 7	May 6	111	
1837	July 3	Nov. 18	139	
1838	June 20	August 13	122	
	August 20	October 25		
1839	May 17	October 12	149	
1840	January 3	April 29	118	
1841	January 2	April 26	116	
1842	Nil.			
1843	January 17	May 22	126	
1844	January 10	April 29	111	
1845	January 15	April 23	99	
1846	January 15	April 28	104	
Do. Special	June 16	August 4	50	

### Acts passed by the General Assembly in 1846.

[9th Victoria.]

- Cap. 1. Revenue. Cap. 2. Road Appropriation.  
 " 3. Culling of Codfish. Cap. 4. Lunatic Asylum.  
 " 5. Law Society Incorporation—(amendment.)  
 " 6. Colonial Building Loan. Cap. 7. General Loan.  
 " 8. Water Company Incorporation.  
 " 9. Nuisances—(amendment.)  
 " 10. Education—(amendment.)  
 " 11. Deserted Families Act—(continuation.)  
 " 12. Contingencies of the Session. Cap. 13. Supply.

[9th and 10th Victoria.]—Second Session.

- Cap. 1. Loan for Rebuilding St. John's.  
 " 2. Interest upon Loan. Cap. 3. Streets of St. John's.  
 " 4. Harbour Grace Streets and Fire-breaks.  
 " 5. Treasury Notes. Cap. 6. Light Houses—(continuation.)  
 " 7. Whale Fishery—(continuation.)  
 " 8. Sessions Courts Fees—(continuation.)  
 " 9. To prevent Disqualification of Voters, &c. (St. John's.)  
 " 10. St. John's Water Company—(amendment.)

## Abstract of the Trade of the Island,

SHewing THE TONNAGE, &c. EMPLOYED, AND THE RELATIVE VALUE OF THE IMPORTS, DISTINGUISHING FOREIGN GOODS FROM GOODS OF BRITISH PRODUCE AND MANUFACTURE.

[Year ended 5th January, 1845.]

## INWARDS.

Countries from and for which the Vessels Entered.	Vessels.		Imports. (Value in Pounds Stg.)		
	No.	Tonnage.	British	Foreign	Totals.
United Kingdom	British 179	25134	338728	19872	358600
	Foreign 2	518			
Jersey and Guernsey	British 5	633	7877	350	8227
Gibraltar	"				
Malta	"				
Zante	"				
France	Foreign 92	14634		8374	8374
Spain	British 26	3162			
	Foreign 56	7220		8818	8818
Portugal	British 56	7220			
Egypt	"				
Naples	" 2	256		235	235
Sardinia	" 1	147		113	113
Roman States	" 1	136		1028	1028
Tuscany	Foreign 1				
Denmark	British 21	3280		28440	28440
Belgium	" 1	214		34	34
Hamburg	" 46	7065		66973	66973
	Foreign 1	107		656	656
Port'gese Colonies	British 1	149		218	218
	Foreign 487	43094	75263	20064	95327
British N. America	British 10	1079	851	14	865
British W. Indies	" 104	11944		137426	137426
Unit. States	Foreign 19	2869		27344	27344
Brazils	British 1	173		4	4
	Foreign 39	841		32	32
French N. American Colonies	British 1	20			
	Foreign 15	2052		16302	16302
Spanish W. Indies	British 19	2286		10034	10034
	Foreign 1	116		966	966
Totals	1130	127129	422719	347297	770016

## Abstract of the Trade of the Island,

SHewing THE TONNAGE, &c. EMPLOYED, AND THE RELATIVE VALUE OF THE EXPORTS, DISTINGUISHING FOREIGN GOODS FROM GOODS OF BRITISH PRODUCE AND MANUFACTURE.

[Year ended 5th January, 1845.]

## OUTWARDS.

Countries for which the Vessels Cleared.	Vessels.		Exports. (Value in Pounds Stg.)		
	No.	Tonnage.	British	Foreign	Totals.
United Kingdom } British	119	15787	375144	692	375836
} Foreign					
Jersey and Guernsey } British	3	428	3034		3034
Gibraltar.. " " " " " "	8	1113	11694		11694
Malta..... " " " " " "	2	200	2498		2498
Zante..... " " " " " "	1	142	1795		1795
France.... Foreign	3	313	4164		4164
Spain.... { British	51	6616	54217		54217
} Foreign	30	4690	52243		52243
Portugal... British	76	10270	129071		129071
Egypt..... " " " " " "	1	68	660		660
Naples..... " " " " " "	10	1285	17831		17831
Sardinia.... " " " " " "					
Roman States " " " " " "	10	1222	14823		14823
Tuscany. { " " " " " "	6	950	9952		9952
} Foreign	5	566	6158		6158
Denmark... British					
Belgium.... " " " " " "					
Hamburg } Foreign					
Port'g'ese } British	1	71	550		550
Colonies } Foreign					
British N. } British	513	53478	54228	7429	61657
America } Foreign	16	2233			
British W } British	62	8357	69511	772	70283
Indies. } " " " " " "	26	2917	7974		7974
U. States } Foreign	3	583	542	22	564
ditto } British	30	5859	47610		47610
Brazils.. } Foreign	1	232	1500		1500
French N. } British	56	1244	2070		2070
American } Foreign	1	20	47		47
Colonies. } " " " " " "					
Spanish } British	2	306	5674		5674
W. Indies } Foreign	1	148	1000		1000
Danish } " " " " " "					
W. Indies } British					
Totals....	1045	119099	873990	8916	882905



## A Return,

Shewing the number of Registered Vessels that Entered and Cleared at the Port of St. John's, distinguishing the Countries from or for which they Entered or Cleared, in each month during the six years ending 1844.

MONTHS.	YEARS.					
	1839	1840	1841	1842	1843	1844
January	77	78	73	86	94	99
February	19	13	19	33	27	35
March	137	161	147	157	150	166
April	178	192	160	184	169	160
May	425	487	485	478	521	510
June	363	424	426	436	446	441
July	190	179	235	233	248	229
August	305	280	296	312	319	345
September	333	357	333	372	375	383
October	304	347	333	330	340	395
November	230	215	255	221	251	257
December	102	144	124	140	130	127
Totals	2663	2877	2886	2982	3070	3147
COUNTRIES.						
United Kingdom	186	238	225	209	230	203
British Colonies	603	665	649	790	795	873
Foreign Europe	252	263	268	282	294	301
"    West Indies	75	56	71	61	70	62
United States	65	140	102	119	135	125
Coast-ways	1482	1515	1571	1521	1546	1583
Totals	2663	2877	2886	2982	3070	3147

## Outfit for the Seal Fishery,

From the Port of St. John's, in each year since 1830, inclusive.

Years.	Vessels	Tons.	Men	Years.	Vessels	Tons.	Men.
1830	92	6198	1985	1839	76	6447	2029
1831	118	8046	2578	1840	75	6190	2058
1832	153	11462	3294	1841	72	5965	2078
1833	106	8665	2964	1842	74	6035	2054
1834	123	11020	2910	1843	106	9625	3175
1835	120	11167	2912	1844	121	11088	3777
1836	126	11425	2855	1845	126	11863	3895
1837	121	10648	2940	1846	141	13165	4470
1838	110	9300	2826				

N.B. A pretty accurate estimate of the number of seals taken in each year may be drawn from the number of seal skins exported.—  
See next page.

### Comparative Statement

Of the Quantity and Value of the Staple Articles of produce exported in the Years 1838, '39, '40, '41, '42, '43, '44, and '45.

	Dried Fish Qtls.	Oils. Gallons.	Sl. Skins No.	Salmon. Tierces.	Herrings. Barrels.	
Quantity.	1838..	724,515	2,173,674	375,361	4,408	15,276
	1839..	865,370	2,224,262	437,501	2,922	20,806
	1840..	915,795	3,206,583	631,385	3,396	14,686
	1841..	1,009,725	2,673,574	417,115	3,642	9,965
	1842..	1,007,980	2,262,031	344,683	4,715	13,839
	1843..	936,202	3,111,312	651,370	4,058	9,649
	1844..	852,162	3,605,868	685,530	3,753	13,410
1845..	1,000,333	2,219,301	352,202	3,545	20,903	
	£	£	£	£	£	
Value.	1838..	484,649	249,428	30,474	13,310	10,723
	1839..	508,157	245,269	46,336	11,692	13,840
	1840..	576,245	305,197	39,408	12,939	9,036
	1841..	605,014	266,832	29,961	12,302	6,361
	1842..	561,950	233,313	23,200	13,678	7,119
	1843..	532,194	335,975	40,497	12,216	4,570
	1844..	482,480	315,690	39,648	11,945	6,665
1845..	596,990	243,646	40,123	12,794	11,234	

### Comparative Statement

Of the Total Colonial Revenue and Expenditure in the years 1844-5.

	1845.	1844.	
Revenue.	Imperial Customs Duties....	£5540 15 8	£5375 19 3
	Colonial Duties .....	49522 8 2	49931 7 0
	Light Dues .....	1715 13 11	1666 1 8
	From other sources .....	2949 11 0	2702 14 0
	£59728 8 9	£59676 1 9	
Expenditure.....	£62703 18 7	£66379 5 6	

### Ships Built in the Colony.

	1840	1841	1842	1843	1844	1845
No.....	31	33	32	24	25	32
Tons.....	1659	1683	1553	1192	1281	1607

### Ships Owned and Registered in the Colony.

On 31st December, 1844.....	844
On 31st December, 1845.....	907

Population, &c. of the several Electoral Districts.

Districts.	According to Census of 1836.		According to Census of 1845.		Religion.		Acres of Land in Cultivation.	Average Produce of		Cattle.												
	Males.	Females.	Males.	Increase per cent.	Episcopalians.	Churches.		Dissenters.	Meeting-houses.		Roman Catholics.	Chapels.	Potatoes.	Oats and other Grain.	Hay and Fodder.	Horses.						
St. John's.	10239	8689	13177	12119	33	6	4226	9	1985	5	18985	5	4110	52	173	775	19099	48543	4313	771	1307	
Concep. Bay	12842	10373	14899	13127	20	7	8601	13	7845	16	11580	10	4196	54	235	2682	4365	152588	2083	948	1576	
Trinity Bay.	3751	3052	4689	4112	13	2	4753	12	2765	8	1283	2	1363	22	34	1389	1079	29623	8	478	121	967
Bonavis Bay	2898	2285	3943	3284	39	4	4684	11	734	1	1809	2	1039	17	26	433	612	25971	272	260	52	505
Fogo	2738	2148	3771	2973	38	8	5017	7	5999	2	1128	3	988	10	20	1014	412	13862	14	52	5	276
*Ferryland.	3330	1781	2623	1958			168	1	1		4412	9	780	22	6	804	1003	28596	591	904	176	607
P lacentia & St. Mary's	2644	2057	3578	2895	37	6	971	4	47		5455	9	960	11	4	842	2200	28759	588	1573	45	1618
Burin	1775	1365	2485	1873	38	7	1221	1	1186	3	1951	2	634	11	709	1047	11081	20	777	85	889	
Fortune Bay	1857	1272	3109	1991	60	3	4640	5	68	5	392		726	10	24	1341	229	2050	3	176	5	360

\* In this District there is a decrease of 10 per cent.

The average increase of the whole population of the Island since 1836 is rather more than .30 per Cent.

ported

rrings.  
arrels.

5,276  
0,806  
4,686  
9,965  
3,839  
9,649  
3,410  
0,903  
£  
0,723  
3,840  
9,036  
6,361  
7,119  
4,570  
6,665  
1,234

1844-5.

14.  
19 3  
7 0  
1 8  
14 0

1 9  
5 6

45  
32  
07

844  
907

## Governors of Newfoundland,

FROM THE EARLIEST PERIOD OF WHICH THERE ARE ANY AUTHENTIC RECORDS IN THE SECRETARY'S OFFICE.

1749.....	Rodney.	1789-91....	Millbanke.
1750-52....	Drake.	1792-93....	King.
1753-54....	Ronfoy.	1794-96....	Sir J. Wallace.
1755-56....	Dorrill.	1797-99....	Hon. W. Waldegrave.
1757-59....	Edwards.	1800-1....	Sir C. M. Pole.
1760.....	Webb.	1802-3....	Gambier.
1761-63....	Graves.	1804-6....	Sir E. Gower.
1764-68....	Palliser.	1807-9....	Holloway.
1769-71....	Hon. J. Byron.	1810-12....	Sir J. Duckworth.
1772-74....	Shukham.	1813-15....	Sir B. G. Keats.
1775.....	Duff.	1816-17....	Pickmore.
1776-78....	Montagu.	1818-25....	Sir C. Hamilton.
1779-84....	Edwards.	1825-34....	Sir T. Cochrane.
1782-85....	Campbell.	1834-41....	Prescott.
1786-88....	Elliott.	1841-46....	Sir John Harvey.

## Present Governors of the other North American Colonies

### CANADA.

Governor-Gen., the Rt. Hon. the Earl of ELGIN and KINCARDINE.

### NOVA SCOTIA.

Lieut.-Governor—Lieut.-Gen. Sir JOHN HARVEY, K.C.B. & K.C.H.

### NEW BRUNSWICK.

Lieut.-Governor—Sir W. M. G. COLEBROOKE.

### PRINCE EDWARD'S ISLAND.

Lieut.-Governor—Sir HENRY VERE HUNTLEY.

Public Archives of Nova Scotia  
HALIFAX, N. S.

U.

grave.

b.

y.

onies

DINE.

C.H.

