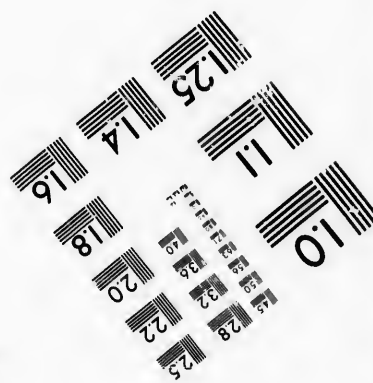
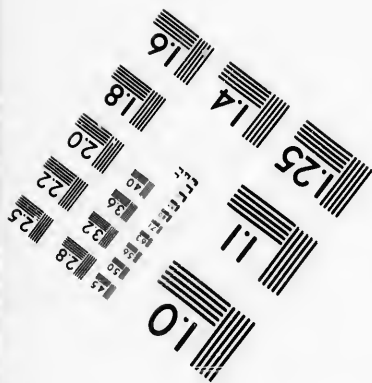
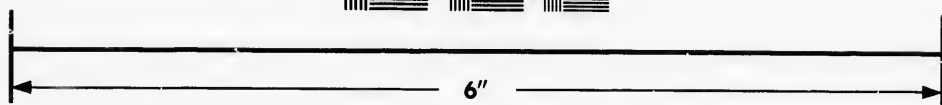
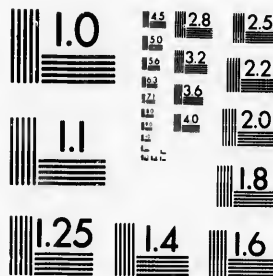


**IMAGE EVALUATION  
TEST TARGET (MT-3)**



Photographic  
Sciences  
Corporation

23 WEST MAIN STREET  
WEBSTER, N.Y. 14580  
(716) 872-4503

**CIHM/ICMH  
Microfiche  
Series.**

**CIHM/ICMH  
Collection de  
microfiches.**



Canadian Institute for Historical Microreproductions / Institut canadien de microreproductions historiques

**© 1987**

Technical and Bibliographic Notes/Notes techniques et bibliographiques

The Institute has attempted to obtain the best original copy available for filming. Features of this copy which may be bibliographically unique, which may alter any of the images in the reproduction, or which may significantly change the usual method of filming, are checked below.

L'Institut a microfilmé le meilleur exemplaire qu'il lui a été possible de se procurer. Les détails de cet exemplaire qui sont peut-être uniques du point de vue bibliographique, qui peuvent modifier une image reproduite, ou qui peuvent exiger une modification dans la méthode normale de filmage sont indiqués ci-dessous.

- Coloured covers/  
Couverture de couleur
- Covers damaged/  
Couverture endommagée
- Covers restored and/or laminated/  
Couverture restaurée et/ou pelliculée
- Cover title missing/  
Le titre de couverture manque
- Coloured maps/  
Cartes géographiques en couleur
- Coloured ink (i.e. other than blue or black)/  
Encre de couleur (i.e. autre que bleu ou noire)
- Coloured plates and/or illustrations/  
Planches et/ou illustrations en couleur
- Bound with other material/  
Relié avec d'autres documents
- Tight binding may cause shadows or distortion  
along interior margin/  
La reliure serrée peut causer de l'ombre ou de la  
distorsion le long de la marge intérieure
- Blank leaves added during restoration may  
appear within the text. Whenever possible, these  
have been omitted from filming/  
Il se peut que certaines pages blanches ajoutées  
lors d'une restauration apparaissent dans le texte,  
mais, lorsque cela était possible, ces pages n'ont  
pas été filmées.
- Additional comments:/  
Commentaires supplémentaires:

- Coloured pages/  
Pages de couleur
- Pages damaged/  
Pages endommagées
- Pages restored and/or laminated/  
Pages restaurées et/ou pelliculées
- Pages discoloured, stained or foxed/  
Pages décolorées, tachetées ou piquées
- Pages detached/  
Pages détachées
- Showthrough/  
Transparence
- Quality of print varies/  
Qualité inégale de l'impression
- Includes supplementary material/  
Comprend du matériel supplémentaire
- Only edition available/  
Seule édition disponible
- Pages wholly or partially obscured by errata  
slips, tissues, etc., have been refilmed to  
ensure the best possible image/  
Les pages totalement ou partiellement  
obscurcies par un feuillet d'errata, une pelure,  
etc., ont été filmées à nouveau de façon à  
obtenir la meilleure image possible.

This item is filmed at the reduction ratio checked below/  
Ce document est filmé au taux de réduction indiqué ci-dessous.

10X	14X	18X	22X	26X	30X
<input type="checkbox"/>	<input type="checkbox"/>	<input type="checkbox"/>	<input checked="" type="checkbox"/>	<input type="checkbox"/>	<input type="checkbox"/>
12X	16X	20X	24X	28X	32X

The copy filmed here has been reproduced thanks to the generosity of:

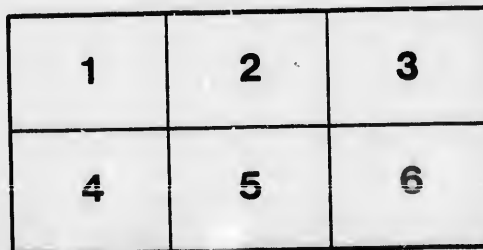
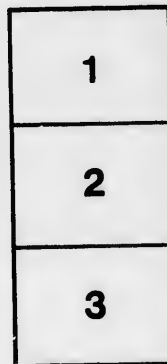
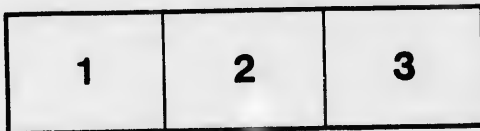
D. B. Weldon Library  
University of Western Ontario  
(Regional History Room)

The images appearing here are the best quality possible considering the condition and legibility of the original copy and in keeping with the filming contract specifications.

Original copies in printed paper covers are filmed beginning with the front cover and ending on the last page with a printed or illustrated impression, or the back cover when appropriate. All other original copies are filmed beginning on the first page with a printed or illustrated impression, and ending on the last page with a printed or illustrated impression.

The last recorded frame on each microfiche shall contain the symbol  $\rightarrow$  (meaning "CONTINUED"), or the symbol  $\nabla$  (meaning "END"), whichever applies.

Maps, plates, charts, etc., may be filmed at different reduction ratios. Those too large to be entirely included in one exposure are filmed beginning in the upper left hand corner, left to right and top to bottom, as many frames as required. The following diagrams illustrate the method:



L'exemplaire filmé fut reproduit grâce à la générosité de:

D. B. Weldon Library  
University of Western Ontario  
(Regional History Room)

Les images suivantes ont été reproduites avec le plus grand soin, compte tenu de la condition et de la netteté de l'exemplaire filmé, et en conformité avec les conditions du contrat de filmage.

Les exemplaires originaux dont la couverture en papier est imprimée sont filmés en commençant par le premier plat et en terminant soit par la dernière page qui comporte une empreinte d'impression ou d'illustration, soit par le second plat, selon le cas. Tous les autres exemplaires originaux sont filmés en commençant par la première page qui comporte une empreinte d'impression ou d'illustration et en terminent par la dernière page qui comporte une telle empreinte.

Un des symboles suivants apparaîtra sur la dernière image de chaque microfiche, selon le cas: le symbole  $\rightarrow$  signifie "A SUIVRE", le symbole  $\nabla$  signifie "FIN".

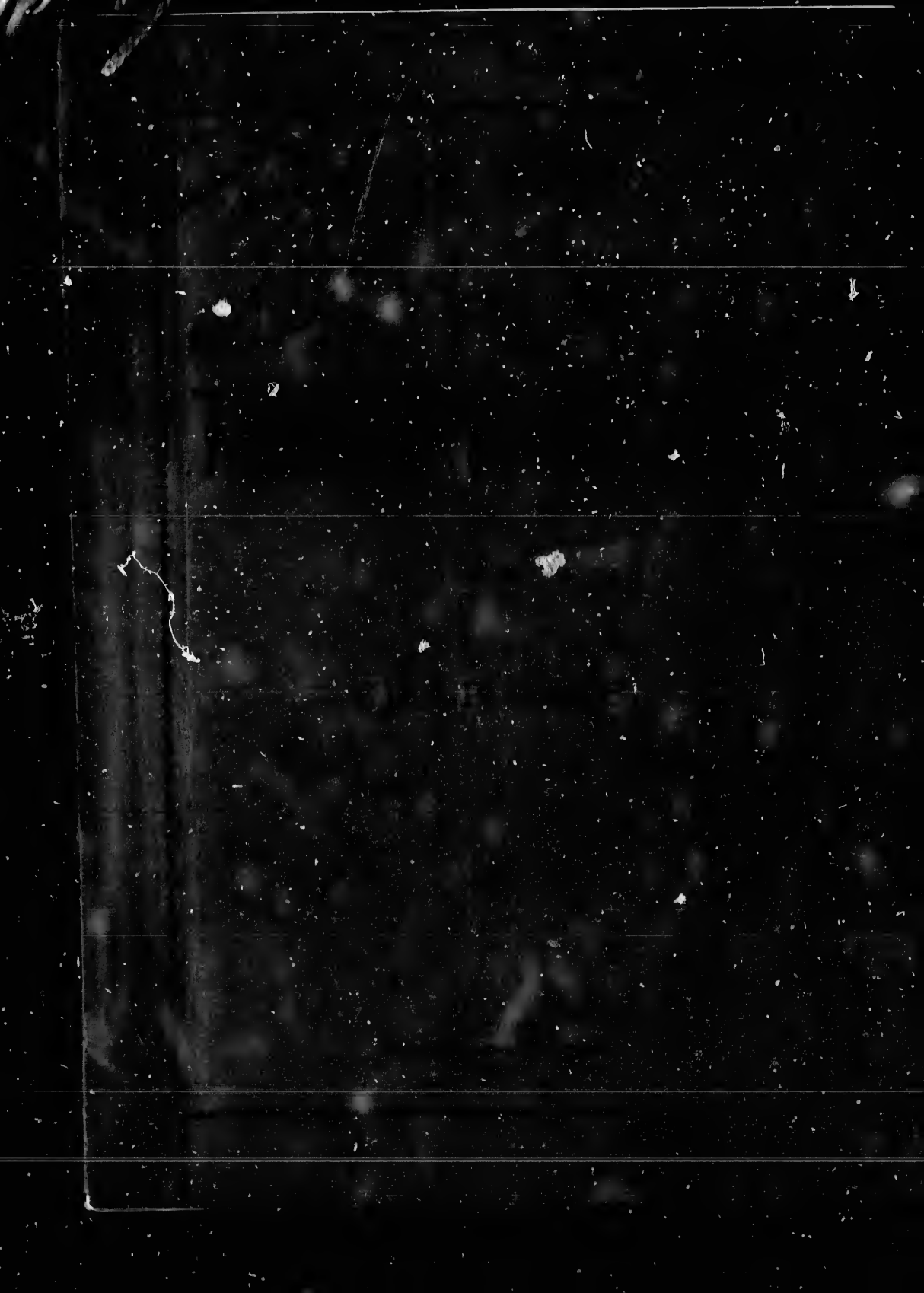
Les cartes, planches, tableaux, etc., peuvent être filmés à des taux de réduction différents. Lorsque le document est trop grand pour être reproduit en un seul cliché, il est filmé à partir de l'angle supérieur gauche, de gauche à droite, et de haut en bas, en prenant le nombre d'images nécessaire. Les diagrammes suivants illustrent la méthode.

ails  
du  
difier  
une  
nage

rrata  
to

pelure,  
n à

32X



# LIST OF VOTERS

FOR THE

# Township of Adelaide

FOR THE

YEAR 1898.



STRATHROY :  
EVANS BROTHERS, PUBLISHERS.  
1898.

## SCHEDULE OF POST OFFICES.

---

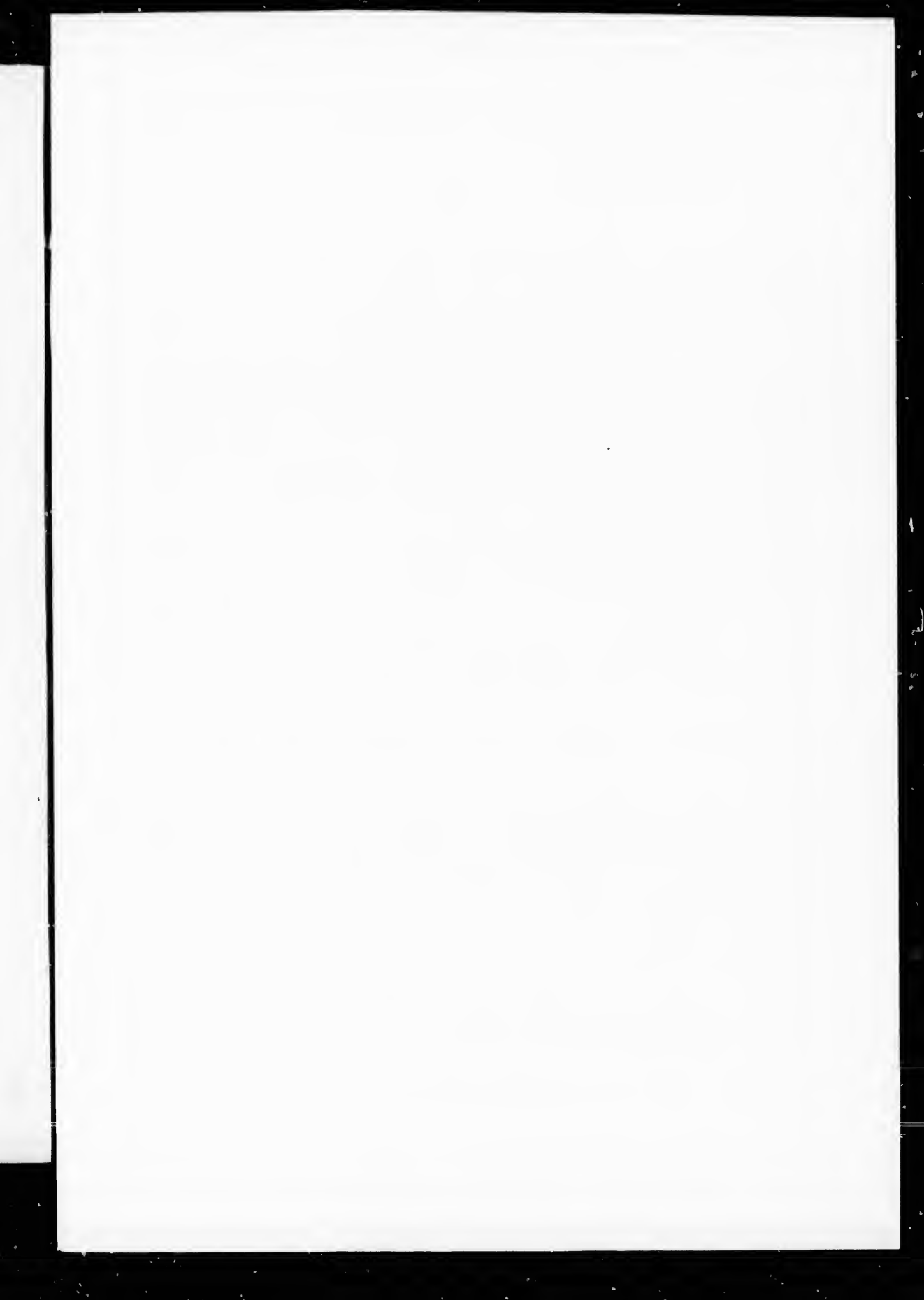
- |               |                |
|---------------|----------------|
| 1. STRATHROY. | 7. CRATHIE.    |
| 2. NAPPERTON. | 8. SPRINGBANK. |
| 3. KERWOOD.   | 9. MULLIFARRY. |
| 4. WISBEACH.  | 10. ARKONA.    |
| 5. ADELAIDE.  | 11. FERNHILL.  |
| 6. AMIENS.    | 12. WATFORD.   |

---

## ABBREVIATIONS.

---

- |                 |                     |
|-----------------|---------------------|
| F—Farmer.       | Mill—Miller.        |
| M—Merchant.     | H—Hotel.            |
| B S—Blacksmith. | S T—School Teacher. |
| B—Broker.       | S—Student.          |





### SCHEDULE OF POST OFFICES.

---

- |               |                |
|---------------|----------------|
| 1. STRATHROY. | 7. CRATHIE.    |
| 2. NAPPERTON. | 8. SPRINGBANK. |
| 3. KERWOOD.   | 9. MULLIFARRY. |
| 4. WISBEACH.  | 10. ARKONA.    |
| 5. ADELAIDE.  | 11. FERNHILL.  |
| 6. AMIENS.    | 12. WATFORD.   |

---

### ABBREVIATIONS.

---

- |                 |                     |
|-----------------|---------------------|
| F—Farmer.       | Mill—Mill-r.        |
| M—Merchant.     | H—Hotel.            |
| B S—Blacksmith. | S T—School Teacher. |
| B—Broker.       | S—Student.          |

HJM

HJM

# VOTERS' LIST, 1898, Municipality of Adelaide.

## Polling Sub-Division No. 1,

Comprising Lots Nos. 1 to 12, in the 1st, 2nd, 3rd, 4th, and 5th Concessions, North of the Egremont Road.

**PART I.—Persons Entitled to Vote at BOTH Municipal Elections and Elections to the Legislative Assembly.**

Jur.	No. on Roll.	NAME.	LOT.	Concession or Street.	Other Description.	P.O.	Occupation.
J106		Arrand, John	.... w hf 7, w hf 8	... 3	..... M F and O..	5..	Farmer
107		Arrand, Benj	.... w hf 7, w hf 8	..... 3	..... M F and O..	5	Farmer
138		Arrand, Albert	.... w hf 7, w hf 8	..... 3	..... M F and O..	5..	Farmer
109		Arrand, Wm	.... w hf 7, w hf 8	..... 3	.....	5.	Farmer
J179		Arrand, Thos	.. s hf w hf 7, e hf w hf 8	.. 2	.....		Farmer
J296		Adair, David	.... n qr 12	..... 1	..... M F		Farmer
		<i>HJM</i> Arrand Chas			<i>MF</i>		<i>kw</i>
J 59		Brown, Thomas	.. w hf 8	..... 4	..... M F and O..	10.	Farmer
J180		Brooks, John	.... n hf w hf 7	..... 2	..... M F and O..	5..	Farmer
J181		Brooks, James	.... n w cor e hf 7	..... 2	..... M F and O..	5	Farmer
J182		Brooks, Frank	.... n w cor e hf 7	..... 2	..... M F and O..	5..	Farmer
173		Brent, Joseph	.... 8, and s w pt 9	..... 1	..... M F and O..	5..	Farmer
J277		Bennett, James	.. 10, n w pt 11	..... 1	..... M F and T..	5..	Farmer
J278		Bennett, John	.. 10, n w pt 11	..... 1	..... M F and T..	5..	Farmer
<i>HJM</i> 279		Bennett, Neil	.... 10, n w pt 11	..... 1	..... <del>M F</del> and T..	5..	Farmer <i>is</i>

## Polling Sub-Division No. 1.

Jur.	No. on Roll.	NAME.	LOT.	Concession or Street.	Other Description.	P.O.	Occupation.
	3	Clelland, Allen	... n e pt 2	5	.....	M F and O..10.	Farmer
	4	Clelland, R J	... n e pt 2	5	.....	M F and O..10.	Farmer
	5	Clelland, Frank	... n e pt 2	5	.....	M F and O..10.	Farmer
J	40	Conkey, P H	... e n pt 3.	4	.....	M F and O..10	Farmer
J	67	Campbell, Donald	... w hf 10	4	.....	M F and O.. 8.	Farmer
J	101	Cuddy, Alfred	... e qr 5, w hf 6	3	.....	M F and O.. 5.	Farmer
J	110	Cuddy, J A	... e hf 8	3	.....	M F and O.. 5.	Farmer
J	111	Cuddy, W J	... e hf 8	3	.....	M F and O.. 5.	Farmer
J	161	Culbert, Joseph	... e hf 1	2	.....	M F and T..12.	Farmer
J	164	Conkey, Darius	... n e pt 3	2	.....	M F and O.. 5.	Farmer
J	166	Conkey, John	... w hf 4, e qr 1	2 and 4	.....	M F and O . 5.	Farmer
	176	Crummer, Ernest	... w hf e hf 6	2	.....	M F and O.. 5.	M D
	177	Crummer, Percy	... w hf e hf 6	2	.....	M F and O.. 5.	Farmer
J	183	Currie, M W	... e pt 7	2	.....	M F and O.. 5.	Farmer
		Currie, Miles, sr	... e pt 7	2	.....	M F and O.. 5.	Farmer
	187	Cuddy, James	... e hf 9, w qr 8	2	.....	M F and O.. 5	Farmer
J	188	Cuddy, W H	... e hf 9, w qr 8	2	.....	M F and O.. 5	Farmer
	189	Cuddy, Ed	... e hf 9, w qr 8	2	.....	M F and O.. 5.	Farmer
J	190	Clark, Glark	... e hf 10	2	.....	M F and O.. 5.	Farmer
J	262	Conkey, Robt jr.	s hf w hf 3, w hf e hf 2.1 n 1 s	.....	M F and O	5.	Farmer
J	264	Clelland, Robert	... s w pt 4	1	.....	M F and O.. 5.	Farmer
J	291	Cleford, Chas	... on 11, pt 11, n w qr 13	1	.....	M F and T.. 5.	Mill
	302	Cleford, Geo	... on 11, pt 11, n w qr 13	1	.....	M F and O.. 5.	Farmer
	303	Cleford, Chas jr.	... on 11, pt 11, n w qr 13	1	.....	M F and O.. 5.	Farmer
J	2	Davidson, Hugh	... n e eor 1, n w eor 2	5	.....	M F and O..10.	Farmer
J	94	Dale, Henry	... pt n hf 4	3	.....	M F and O..10.	Farmer

Jur. No.  
R

J175

200

201

J282

6

J 7

J 8

9

J295

97

J119

J 16

J 17

J 46

J 91

J112

J170

J196

197

198

J199

4.7.2m

Polling Sub-Division No. 1.

Jur.	No. on Roll	NAME.	LOT.	Concession or Street.	Other Description.	P.O.	Occupation.
	J175	Demaray, W C	w lf 6	2	M F and O	5	Farmer
		Dempster, R S	e hf 1	2	M F and O	5	Farmer
	200	Demaray, Dennis	w hf 12	2	M F and O	5	Farmer
	201	Demaray, Edgar	w hf 12	2	M F and O	5	Farmer
	J282	Dickey, Gilbert	on 11, sub lot 4	1	M F and T	5	Farmer
		6 Dale, John	s w pt 1, w hf e hf 1	5	M F and O	10	Farmer
	J 7	Dale, Richard	s w pt 1, w hf e hf 1	4	M F and O	10	Farmer
	J 8	Dale, Robert	s w pt 1, w hf e hf 1	4	M F and O	10	Farmer
	9	Dale, James	s w pt 1, w hf e hf 1	4	M F and O	10	Farmer
	J295	Freele, Jas S	pt 11, n hf w hf 13	1	M F and T	5	Farmer
	97	Finan, James	s e qr 4	3	M F and O	5	Farmer
	J119	Freele, Robert	w qr 11	3	<del>M F and O</del>		
	J 16	Grogan, Thos	w pt 4, n e eor 3	5 and 4	M F and O	10	Farmer
	J 17	Grogan, Lawrence	w pt 4, n e eor 3	5 and 4	M F and O	10	Farmer
	J 46	Glover, James	e hf 4	4	M F and O	10	Farmer
	J 91	Galloway, J H	e hf 2, pt 3	3 and 2	M F and O	10	Farmer
	J112	Gerry, James	e hf 9	3	M F and O	10	Farmer
	J170	Galloway, W T	w pt 5	2	M F and O	10	Farmer
	J196	George, James sr	e hf 11, n pt e hf 11, (s e pt 12, n pt 12	2 and 1 } 3 and 4 }	M F and O	5	Farmer
	197	George, James jr	e hf 11, n pt e hf 11, (s e pt 12, n pt 12	2 and 1 } 3 and 4 }	M F and T	5	Farmer
	198	George, Nelson	e hf 11, n pt e hf 11, (s e pt 12, n pt 12	2 and 1 } 3 and 4 }	M F and T	5	Farmer
	J199	George, Albert	e hf 11, n pt e hf 11, (s e pt 12, n pt 12	2 and 1 } 3 and 4 }	M F and T	5	Farmer

4.7.9m *Georg Tho.*

"

2 x 1 in F.V. 5 " *W*

## Polling Sub-Division No. 1.

Jur.	No. on Roll.	NAME.	LOT.	Concession or Street.	Other Description.	P.O.	Occupation.
J270		Gilbert, Lonis	w hf 7	1	M F and T.	5.	Farmer
271		Galsworthy, John	e hf 7, w hf 9	1 n, 1 s	M F and O.	5.	Farmer
J272		Galsworthy, W H.	e hf 7, w hf 9	1 n, 1 s	M F and O.	5.	Farmer
J		George, Samuel	on 11	1	M F and T.	5.	Farmer
J	1	Harrington, Wesley	n w pt 1	5	M F and O.	10.	Farmer
J	10	Hay, James	e pt 2, s w pt 3	5	M F and T.	10.	Farmer
	13	Hoffner, Joseph S	e pt 3, w hf 6	5 and 4	M F and O.	10.	Farmer
J	14	Hoffner, Wm	e pt 3, wh hf 6	5 and 4	M F and O.	10.	Farmer
J	15	Hoffner, Andrew	e pt 3, w hf 6	5 and 4	M F and O.	10.	Farmer
J	21	Hoffner, Joseph jr.	e hf 5	5	M F and O.		
J	22	Harrington, Benj	6	5	M F and O.	10.	Farmer
J	51	Hay, Timothy	e hf 5	4	M F and O.	10	Farmer
J	61	Hendrick, John	w hf 9, pt 9	4 and 5	M F and O.	8.	Farmer
J	62	Hendrick, James	w hf 9, pt 9	4 and 5	M F and O.	8.	Farmer
J	63	Hendrick, Lorenzo	w hf 9, pt 9	4 and 5	M F and O.	8.	Farmer
J	64	Hendrick, Vietor	w hf 9, pt 9	4 and 5	M F and O.	8	Farmer
J	98	Healy, John	w qr 5	3	M F and O.	5.	Farmer
J	99	Healy, W J	w qr 5	3	M F and O.	5	Farmer
J100		Healy, James	w qr 5	3	M F and O.	5.	Farmer
289		Harris, Joseph	on 11	1	M F and C.	5.	Farmer
J297		Henry, Wm	s w qr 12, cen pt 12	1	M F and O.	5	Farmer
J298		Henry, Robert	s w qr 12, cen pt 12	1	M F and O.	5.	Farmer
J	24	Keyser, Joseph	7, n qr 7	5 and 4	M F and O.	10.	Farmer
J	25	Keyser, O J	7, n qr 7	5 and 4	M F and O.	10.	Farmer
	26	Keyser, Philip A	7, n qr 7	5 and 4	M F and O.	10.	Farmer

Jur.	No. Ro
J	27
J	28
J	58
J	870
J	869
J	259
J	260
J	18
J	19
J	20
J	36
J	37
J	38
J	39
J	47
J	48
J	49
J	50
J	65
J	66
J	68
J	71
J	72
J	73
J	88

Polling Sub-Division No. 1.

Occupation.	No. on Roll.	NAME.	LOT.	Concession or Street.	Other Description.	P. O.	Occupation.
Farmer	27	Keyser, George	7, n qr 7	5 and 4	M F and O	10	Farmer
Farmer	28	Keyser, Berton	7, n qr 7	5 and 4	M F and O	10	Farmer
Farmer	58	Keyser, Samuel	s hf n hf 7	4	M F and O	10	Farmer
Farmer	870	Keyser, Robert	s hf n hf 7	4	M F and O	10	Farmer
Farmer	869	Kingston, Paul	cen pt 12	4	M F and O	5	Farmer
Farmer	259	Kiucade, Robert	w hf 2	1	M F and O	4	Farmer
Farmer	260	Kincade, Victor	w hf 2	1	M F and O	4	Farmer
Farmer	18	Langan, John	e pt 4, n w qr 4, s qr 7	5 and 4	M F and O	10	Farmer
Farmer	19	Langan, Wm	e pt 4, n w qr 4, s qr 7	5 and 4	M F and O	10	Farmer
Farmer	20	Langan, Peter	e pt 4, n w qr 4, s qr 7	5 and 4	M F and O	10	Farmer
Farmer	36	Langan, Jas	w hf 2	5 and 4	M F and O	10	Farmer
Farmer	37	Murray, John	e hf pt 3, s w qr 2	4 and 5	M F and O	10	Farmer
Farmer	38	Murray, Tilton	e hf pt 3, s w qr 2	4 and 5	M F and O	10	Farmer
Farmer	39	Murray, James	e hf pt 3, s w qr 2	4 and 5	M F and O	10	Farmer
Farmer	47	Murray, Patrick	w hf 5	4	M F and O	10	Farmer
Farmer	48	Murray, A J	w hf 5	5	M F and O	10	Farmer
Farmer	49	Murray, George	w hf 5	4	M F and O	10	Farmer
Farmer	50	Murray, J T	w hf 5	4	M F and O	10	Farmer
Farmer	65	McKenzie, Dunean	e hf 9, pt 8	4 and 5	M F and O	8	Farmer
Farmer	66	McKenzie, Alex	e hf 9, pt 8	4 and 5	M F and O	8	Farmer
Farmer	68	McLeish, Malcolm	e hf 10	4	M F and O	8	Farmer
Farmer	71	McLachlan, Dunean	pt 12	4	M F and O	8	Farmer
Farmer	72	McLachlan, Wm	pt 12	4	M F and O	8	Farmer
Farmer	73	McLaughlan, Hugh	pt 12	4	M F and O	8	Farmer
Farmer	88	Mashford, John	w hf 1	3	M F and T	4	Farmer

*John McLeish Colin* " " *M F and O* " " *W*

## Polling Sub-Division No. 1.

Jur.	No. on Roll.	NAME.	LOT.	Concession or Street.	Other Description.	P.O.	Occupation.
J		Morgan, David . . . . w hf 1 . . . . .	3		M F and O . .	4 .	Farmer
J 89		McChesney, Joseph . . e hf 1 . . . . .	3		M F and O . .	4 .	Farmer
J103		McNabb, Wm . . . . e hf w hf 5, w hf 7 . .	3		M F and O . .	5 .	Farmer
		104 McNabb, John . . . . e hf w hf 5, w hf 7 . .	3		M F and O . .	5 .	Farmer
		105 McNabb, Jas A . . . . e hf w hf 5, w hf 7 . .	3		M F and O . .	5 .	Farmer
J121		McInroy, C. E . . . . w hf 12 . . . . .	3		M F and O . .	5 .	Farmer
J162		McChesney, Wm . . . . w hf 2 . . . . .	2		M F and O . .	4 .	Farmer
		171 McCabe, Miles . . . . e pt 5 . . . . .	2		M F and O . .	5 .	Farmer
J172		McCabe, Frank . . . . w hf e hf 5 . . . . .	3		M F and O . .	5 .	Farmer
J173		McCabe, W T . . . . w hf e hf 5 . . . . .	3		M F and O . .	5 .	Farmer
		174 McCabe, John . . . . w hf e hf 5 . . . . .	3		M F and O . .	5 .	Farmer
J255		Miniely, Wm . . . . w hf 1 . . . . .	1		M F and O . .	4 .	Farmer
J256		Miniely, Fred . . . . w hf 1 . . . . .	1		M F and O . .	4 .	Farmer
J257		Miniely, John . . . . e hf 1 . . . . .	1		M F and O . .	4 .	Farmer
J258		Miniely, J A . . . . e hf 1 . . . . .	1		M F and O . .	4 .	Farmer
J261		McCarthy, Wm . . . . e hf 2 . . . . .	1		M F and O . .	4 .	Farmer
		274 Morse, Wm . . . . s e pt 9 . . . . .	1		M F and O . .	5 .	Farmer
J275		Morse, Joseph . . . . s e pt 9 . . . . .	1		M F and O . .	5 .	Farmer
J276		Morse, John . . . . s e pt 9 . . . . .	1		M F and O . .	5 .	Farmer
J286		Miller, H J . . . . pt of 11 . . . . .	1		M F and O . .	5 .	Tp Clerk
J287		Murphy, Patrick . . pt 11 . . . . .	1		M F and O . .	5 .	Farmer
J290		McCluchey, James . pt 11 . . . . .	1		M F and O . .	5 .	Farmer
J113		Pullman, Ed . . . . w hf 10 . . . . .	3		M F and T . .	5 .	Farmer
J114		Pullman, Joseph . . w hf 10 . . . . .	3		<del>M F and T . .</del>	5 .	Farmer
J186		Pennington, B . . . . w hf 9 . . . . .	2		M F and T . .	5 .	Farmer
202		Plaxton, Wm . . . . n hf e hf 12 . . . . .	2		M F and T . .	5 .	Farmer

*H. J. Gm*

Polling Sub-Division No. 1.

Occupation.	No. on Roll.	NAME.	LOT.	Concession or Street.	Other Description.	P.O.	Occupation.
Farmer	203	Plaxton, Edmund	hf e hf 12	2	M F and T	5	Farmer
Farmer	284	Parker, Frank	lot 10, pt of 11	1	M F and O	5	F and M
Farmer	285	Parker, Fred	lot 10, pt of 11	1	M F and O	5	F and M
Farmer	288	Parker, Edwin	snb lot 12	1	M F and O	5	Gentle'an
Farmer	168	Robertson, Duncan	e hf 4	2	M F and O	5	Farmer
Farmer	169	Robertson, J A	e hf 4	2	M F and O	5	Farmer
Farmer	191	Raison, Wm	w hf 11, e pt 11, e pt 9	1,2 & 3	M F and O	5	Farmer
Farmer	192	Raison, Thomas	w hf 11, e pt 11, e pt 9	1,2 & 3	M F and O	5	Farmer
Farmer	193	Raison, W T	w hf 11, e pt 11, e pt 9	1,2 & 3	M F and O	5	Farmer
Farmer	194	Raison, Wilson	w hf 11, e pt 11, e end 9	2 and 3	M F and O	5	Farmer
Farmer	195	Raison, Joseph	w hf 11, e pt 11, e end 9	2 and 3	M F and O	5	Farmer
Farmer	95	Robinson, Chas	sn pt 4	3	M F and T	10	Farmer
Farmer	29	Smith, R B	pt 8, pt e hf 6	5 and 4	M F and O	10	Occupant
Farmer	30	Smith, G L	pt 8, pt e hf 6	5 and 4	M F and O	10	Occupant
Farmer	33	Smith, T D	w hf 1	4	M F and O	10	Occupant
Farmer	36	Smith, Horatio	w hf 1	4	M F and O	10	Occupant
Farmer	35	Smith, Egerton	w hf 1	4	M F and O	10	Occupant
Tp Clerk	53	Smith, John	n e cor 6	4	M F and O	10	Blacks'ith
Farmer	54	Smith, Frank	n e cor 6	4	M F and O	10	Blacks'ith
Farmer	55	Smith, Matthew	n e cor 6	4	M F and O	10	Blacks'ith
Farmer	56	Smith, J R	n e cor 6	4	M F and O	10	Blacks'ith
Farmer	69	Sharpe, John	11	4	M F and O	8	Farmer
Farmer	70	Sharpe, Richard	11	4	M F and O	8	Farmer
Farmer	90	Shields, Frederick	w hf 2	3	M F and O	10	Farmer
Farmer	1163	Shields, Julius	e hf 2	2	M F and O	4	Farmer
Farmer	1871	Smith, John	w hf e hf 6	2	M F and O	3	Farmer



Jur. No. on Roll.	NAME.	LOT.	Concession or Street.	Other Description.	P.O.	Occupation.
J207	Seed, Walter	s qr 12	2	M F and O	5	Farmer
J 57	Stevens, John W.	n hf s hf 7	4	M F and O	10	Farmer
J 31	Topping, John	8, 9 and 10	5	M F and O	8	Farmer
J 44	Topping, John	s w qr 4	4	M F and T	10	Farmer
J 45	Topping, Wm	s w qr 4	4	M F and T	10	Farmer
J102	Topping, Topping	e hf 6	3	M F and T	5	Farmer
J116	Tigner, Wm	e hf 10	3	M F and T	5	Farmer
J117	Tigner, Chas	e hf 10	3	M F and T	5	Farmer
J118	Tigner, John	e hf 10	3	M F and T	5	Farmer
J178	Topping, George	e qr 6	2	M F and T	5	Farmer
J184	Thorpe, Benj	e qr 8	2	M F and O	5	Farmer
283	Turner, Benj	on 11	1	M F and T	5	Farmer
J292	Underhay, Willmott	on 11	1	M F and O	5	M
12	Wells, George	n e pt 3	5	M F and O	10	Farmer
J 32	Wilkins, Harvey	on 10	5	M F and O	8	Farmer
J 52	Wilson, Hugh E	on 6	4	M F and O	10	Farmer
J 92	Wilson, Samuel	s hf 3	3	M F and O	10	Farmer
J 93	Wilson, Robert	s hf n hf 3	3	M F and O	10	Farmer
J 94	Wilson, David	s w pt 3, n pt 3	2 and 1	M F and O	10	Farmer
J263	Wiley, D D	e hf 3	1	M F and O	10	Farmer
J265	Wiley, D A	e pt 4	1	M F and O	10	Farmer
J266	Wiley, Samuel	e pt 4	1	M F and O	10	Farmer
267	Woodlock, John	w hf 6	1	M F and O	10	Farmer
J268	Woodlock, Joseph	w hf 6	1	M F and O	10	Farmer
J269	Walsh, Patrick	e hf 6	1	M F and O	10	Farmer

Polling Sub-Division No. 1.

Occupation.	Jur. No. on Roll	NAME.	LOT.	Concession or Street.	Other Description.	P.O.	Occupation.
Farmer	280	Wilkins, George	on 11	1	M F and O	10	Farmer
Farmer	281	Wilkins, Matthew	on 11	1	M F and O	10	Farmer

**PART II.—Persons Entitled to Vote at Municipal Elections ONLY.**

Farmer	180	Brown, Arthur	w hf 1	2	Owner	Watford	M
Farmer	422	Cuddy, L W	w hf 9	3	Owner	1	S T
Farmer	872	Douglass, Stewart	n w pt 11	1	Owner	Petrolia	Farmer
Farmer	873	Donley, John	n e pt 11	1	Owner	1	M
Farmer	120	Freele, Thos	cen pt 11	3	Owner		H
M	301	Gibson, John	on 11	1	Owner		B S
Farmer	23	Harrington, Mrs S C	.6	5	Owner	10	Widow
Farmer	874	Moore, Wm	w hf 10	3	Owner	1	Gentle'an
Farmer	876	McKenzie, Mrs M J	on 11	1	Owner		Widow
Farmer	11	ONeil, Wm	n e pt 3	5	Owner	10	Farmer
Farmer	419	Rae, Alex	w hf e hf 8	2	Owner		Farmer
Farmer	420	Rae, James	w hf e hf 8	2	Owner		Farmer
Farmer	421	Rae, Duncan	w hf e hf 8	2	Owner		Farmer

Polling Sub-Division No. 1.

Jur.	No. on Roll.	NAME.	LOT.	Concession or Street.	Other Description.	P.O.	Occupation.
	60	Stevens, Mrs Mary	e hf 8	4	Owner		Widow
	875	Smith, George	e pt 2, s w pt 3	5	Owner	10	Vet
	185	Smith, Mrs Agnes	e qr 8	2	Owner	5	Widow
	300	Taylor, Miss Florence	pt 11	1	Owner	London	Spinster
	115	Tigner, Mrs Jane	e hf 10	3	Owner	5	Widow
	877	Walsh, Thos	w hf 7	1	Owner	Parkhill	M

PART III. - Persons Entitled to Vote at Elections to the Legislative Assembly ONLY.

*H. J. M. Arrand Chas 2 M.F. 5-W*

	878	Colter, John	w hf 1	2	M F	12	
	96	Hancock, John	cor w hf 4	3	M F	10	
	879	McIntosh, George	w hf 2	3	M F	10	
	167	Symes, George	w hf 4	2	M F		

Comp  
PAR  
Jur. No.  
R  
J123  
J124  
J125  
J126  
J127  
128  
224  
226  
J 87  
J137  
J143  
15  
J155  
J20  
J21  
J21  
J21  
J22

## Polling Sub-Division No. 2,

Comprising Lots Nos. 13 to the Townline in the 1st, 2nd, 3rd, and 4th Concessions,  
North of the Egremont Road.

**PART I.—Persons Entitled to Vote at BOTH Municipal Elections and Elections  
to the Legislative Assembly.**

No.	No. on Roll.	NAME.	LOT.	Concession or Street.	Other Description.	P.O.	Occupation.
J123		Adair, James	hf 14 and 15	3	M F and O	5	Farmer
J124		Adair, Hugh	hf 14 and 15	3	M F and O	5	Farmer
J125		Adair, Arthur	hf 14 and 15	3	M F and O	5	Farmer
J126		Adair, Robert	hf 14 and 15	3	M F and O	5	Farmer
J127		Adair, David	hf 14 and 15	3	M F and O	5	Farmer
128		Adair, Samuel	hf 14 and 15	3	M F and O	5	Farmer
224		Ayer, A J	w pt 19	2	M F and O	7	Farmer
226		Ayer, Wm	n e pt w hf 6	2	M F and O	7	Farmer
J 87		Bardick, A H	gere lot 20	4	M F and T	7	Blacks'ith
J137		Brown, Albert	s e qr 18	3	M F and O	7	Farmer
J142		Bolton, Thos	s hf 19	3	M F and O	7	Farmer
J143		Bolton, W S	w hf 20	3	M F and O	7	Farmer
151		Bunting, Wesley sr	e pt 24	3	M F and O	7	Farmer
J152		Bunting, Wesley jr	e pt 24	3	M F and O	7	Farmer
J206		Beckton, Wm	n qr s hf 13	2	M F and O	5	Farmer
J210		Burrows, Henry	e hf 15	2	M F and O	5	Farmer
J211		Burrows, Alfred	e hf 15	2	M F and O	5	Farmer
J219		Brown, G A	een pt 17	2	M F and O	7	Farmer
J229		Bolton, Hansford	20	2	M F and O	7	Farmer

Jur.	No. on Roll.	NAME.	LOT.	Concession or Street.	Other Description.	P.O.	Occupation.
J231		Bolton, Chas J....	e hf 21				
J232		Bolton, John R ..	w hf 22	2	M F and O..	7..	Farmer
<i>H.J.M.</i>		<del>Bolton, Samuel E. .</del>	<del>w hf 22</del>	<del>2</del>	<del>M F and O..</del>	<del>7..</del>	<del>Farmer</del>
J234		Bolton, Hiram....	w hf 22	2	M F and O..	7..	Farmer
J312		Brock, George....	e hf 17	1	M F and O..	5	Farmer
J313		Brock, Wm .....	w hf 18	1	M F and O..	5..	Farmer
		314 Brock, W A .....	w hf 18	1	M F and O	5.	Farmer
J360		Bolton, C H .....	w hf 29	1	M F and O..	6	Farmer
		362 Brown, George .	s ht e hf 29	1	M F and O..	6..	Farmer
J348		Demaray, Richard .	e hf w hf 26, e hf 26.	1	M F, O & T..	6..	Farmer
J352		Demaray, Aaron .	s w cor 27	1 n	M F and T..	6..	Farmer
		353 Demaray, Samuel.	n e $\frac{1}{2}$ 26	1 s	M F and T..		
J354		Demaray, W J....	s e cor 27	1	M F and O..	6..	Farmer
J205		Eastman, George. .	cen pt 13, s hf n hf 14.	2	M F and O..	5..	Farmer
		242 Elliott, George....	w pt 24	2	M F and O..	7..	Farmer
J 74		Fraser, Robert....	w pt 13, 15	4	M F and O..	8..	Farmer
[ 76		Fraser, Wm .....	w pt 13, 15	4	M F and O..	8..	Farmer
J139		Featherston, Henry .	n hf e hf 18	3	M F and O.	7..	Farmer
J140		Featherston, Robert.	n hf e hf 18	3	M F and O..	7..	Farmer
J350		Fuller, Silas .....	e hf 26, e pt 26	1	M F and T..	6..	Farmer
J 85		Gerry, Henry ...	17	4	M F and O..	7..	Farmer
J 86		Gerry, David ....	gore 18	4	M F and O..	7..	Farmer
J134		Gerry, R R .....	w qr 17	3	M F and O..	7..	Farmer
J135		Gerry, Richard .	e hf w hf 17	3	M F and O..	7..	Farmer

Jur.	No. on Roll.
J235	C
J236	C
J237	C
J238	C
J245	C
J246	
J247	
J248	
J249	
J310	
J333	
J334	
J335	
J336	
-927	
J122	
J129	
J130	
131	
J150	
J214	
J235	
32	
J32	
J32	
32	

Polling Sub-Division No. 2.

Occupation.	Lot.	NAME.	No. on Roll.	Concession or Street.	Other Description.	P.O.	Occupation.
		J235 Graham, John	e hf 22	2	M F and O	7	Farmer
Farmer		J236 Graham, Duncan	e hf 22	2	M F and O	7	Farmer
Farmer		J237 Graham, Neil	e hf 22	2	M F and O	7	Farmer
Farmer		J238 Graham, Chas	e hf 22	2	M F and O	7	Farmer
Farmer		J245 Graham, Wm	w hf 25	2	<del>M F and O</del>	7	Farmer
Farmer		J246 Graham, Robert	w hf 25	2	M F and O	7	Farmer
Farmer		J247 Graham, John	w hf 25	2	<del>M F and O</del>	7	Farmer
Farmer		J248 Graham, James	w hf 25	2	<del>M F and O</del>	7	Farmer
Farmer		J249 Getty, Jonah	n hf e hf 25	2	M F and O	7	Farmer
Farmer		J310 Glenn, George	e hf 16	1	M F and O	5	Farmer
Farmer		J333 Gunson, Henry	w hf 23, e hf 22	1 n, 1 s	M F and O	6	Farmer
Farmer		J334 Gunson, John	w hf 23, e hf 22	1 n, 1 s	M F and T	6	Farmer
Farmer		J335 Gunson, Wm	w hf 23, e hf 22	1 n, 1 s	M F and T	6	Farmer
Farmer		J336 Gunson, Benj	w hf 23, e hf 22	1 n, 1 s	M F and T	6	Farmer
Farmer		<del>J337 Gunson, Wesley</del>	<del>w hf 23, e hf 22</del>	<del>1 n, 1 s</del>	<del>M F and T</del>	<del>6</del>	<del>Farmer</del>
Farmer		J122 Humphries, W E	.13	3	M F and O	5	Farmer
Farmer		J129 Henderson, J M	w hf 16	3	M F and O	5	Farmer
Farmer		J130 Henderson, M J	w hf 16	3	M F and O	5	Farmer
Farmer		131 Henderson, F D	w hf 16	3	M F and O	5	Farmer
Farmer		J150 Heake, W A	e pt 23, w pt 24	3	M F and O	7	Farmer
Farmer		J214 Henderson, E F	w hf 14, w hf e hf 16	.3 and 2	M F and O	5	Farmer
Farmer		J239 Harris, David	w hf 23	2	M F and O	7	Farmer
Farmer		321 Hickey, Thos sr	e hf 20, w pt 21	1	M F and O	1	Farmer
Farmer		J322 Hickey, Patrick	e hf 20, w pt 21	1	M F and O	1	Farmer
Farmer		J323 Hickey, James	e hf 20, w pt 21	1	M F and O	1	Farmer
Farmer		324 Hickey, Bart	e hf 20, w pt 21	1	M F and O	1	Farmer

W  
M  
M

M

Tract	No. on Roll.	NAME.	LOT.	Concession or Street.	Other Description.	P.O.	Occupation.
	325	Hickey, Thos M	e hf 20, w pt 21	1	M F and O.	1.	Farmer
	3355	Hansford, W A	f w hf 28 (w qr 26, s hf 27)	1 n 1 n, 1 s	M F and O. M F and T.	6.	Farmer Farmer
	3240	Jarrett, George	w hf 23	2	M F and O.	7.	Farmer
	3156	Linton, Wm	26	3	M F and O.	11.	Farmer
	3157	Linton, George	26	3	M F and O.	11.	Farmer
	3158	Linton, Myron	26	3	M F and O.	11.	Farmer
	307	Lukins, Alex	e hf 14, pt 10	1 n, 1 s	M F and O.	5.	Farmer
	306	Lukins, Henry	e hf 14, pt 10	1 n, 1 s	M F and O.	5.	Farmer
	338	Lewis, John	e hf 23 and cen pt 24	1 n, 1 s	M F and O.	1.	Farmer
	3339	Lewis, J E	e hf 23 and cen pt 24	1 n, 1 s	M F and O.	1.	Farmer
	340	Lewis, A E	e hf 23 and cen pt 24	1 n, 1 s	M F and O.	1.	Farmer
	341	Lewis, Chas	e hf 23 and cen pt 24	1 n, 1 s	M F and O.	1.	Farmer
	342	Lewis, W T B	w hf 24	1	M F and O.	1.	Farmer
	343	Lewis, J W	w hf 24	1	M F and O.	1.	Farmer
	371	Lindsay, Joshua	pt 31	1	M F and O.	1.	Farmer
	382	McDonald, John sr	16 and e pt 17	4 and 2	M F and O.	8.	Farmer
	383	McDonald, Hugh	16 and e pt 17	4 and 2	M F and O.	8.	Farmer
	384	McDonald, John	16 and e pt 17	4 and 2	M F and O.	8.	Farmer
	3132	McLellan, John	e hf 16	3	M F and O.	8.	Farmer
	3133	McLellan, James	e hf 16	3	M F and O.	8.	Farmer
	3136	McCubbin, Daniel	e hf 17	3	M F and O.		
	3146	McArthur, Alexander	s e qr 20	3	M F and O.	7.	Farmer
	3149	McKeen, Wm	f e pt 22, w pt 23 (n e qr 19 and gore 19 3 and 4)	3 3 and 4	M F and O. M F and T.	7.	Farmer Farmer
	3159	McDonald, Angus	27	3	M F and O.	11.	Farmer

Polling Sub-Division No. 2.

Occupation.	Jur.	No. on Roll.	NAME.	LOT.	Concession or Street.	Other Description.	P.O.	Occupation.
Farmer	J204		McGerry, James . . n qr 13, n w pt 14	2		M F and O . .	5.	Farmer
Farmer	J212		McCabe, Angus . . w hf 16	2		M F and O . .	5.	Farmer
Farmer	J213		McCabe, Wm . . . w hf 16	2		M F and O . .	5.	Farmer
Farmer	J220		McInroy, W A . . w hf 18	2		M F and O . .	5.	Farmer
Farmer	J251		McLaren, John . . e hf w hf 26	2		M F and O . .	11.	Farmer
Farmer	J252		McDonald, Chas . . e hf 26	2		M F and O . .	11.	Farmer
Farmer	J308		McKenzie, Thos . . w hf 15	1		M F and O . .	5.	Farmer
Farmer	J309		McCarthy, John . . w hf 16	1		M F and O . .	5.	Farmer
Farmer	J346		Mahon, Wm . . . w hf 25	1		M F and O . .	6.	Farmer
Farmer	J347		Mahon, Samuel . . w hf 25	1		M F and O . .	6.	Farmer
Farmer			305 Neil, Wm . . . . w hf 14	1		M F and T . .	5.	Farmer
Farmer	J147		Nettleton, Wm . . . e hf 21	3		M F and O . .	1.	Farmer
Farmer	J344		Newall, Alex . . . . e hf 24	1		M F and O . .	6.	Farmer
Farmer	J345		Newall, A R . . . . s pt 24	2		M F and O . .	6.	Farmer
Farmer	J250		Olliver, Henry . . . e qr and w qr 23	2		M F and O . .		
Farmer	J 79		Pedden, John . . . w pt 14	4		M F and O . .	8.	Farmer
Farmer	J 80		Pedden, Andrew . . w pt 14	4		M F and O . .	8.	Farmer
Farmer	J144		Pedden, Joseph . . pt e hf 20 and w hf 21	4		M F and O . .	7.	Farmer
Farmer	J145		Pedden, W J . . . pt e hf 20 and w hf 21	3		M F and O . .	7.	Farmer
Farmer	J209		Pennington, David . . e pt 14 and w hf 15	2		M F and O . .	5.	Farmer
Farmer	J366		Parsons, Wm . . . . e pt 30 and w pt 31	1		M F and O . .	6.	Farmer
Farmer			367 Parsons, Richard . . e pt 30 and w pt 31	1		M F and O . .	6.	Farmer
Farmer	J216		Regan, Michael . . . e qr 16, w qr 17	2		M F and O . .	5.	Farmer
Farmer			217 Regan, James . . . e qr 16, w qr 17	2		M F and O . .	5.	Farmer



## Polling Sub-Division No. 2.

Jur.	No. on Roll.	NAME.	LOT.	Concession of Street.	Other Description.	P O.	Occupation.
	218	Regan, John	e qr 16, w qr 17	2	M F and O.	5.	Farmer
J221		Robotham, G D	e hf 18	2	M F and O.	7.	Farmer
J244		Ramsay, Fred	e pt 24	2	M F and O.	7.	Farmer
J304		Radeliffe, Stephen E.	e hf 13	1	M F and O.	5.	Farmer
<i>H. J. M.</i>	J 77	Scott, Wm	e pt 13	4	<del>M F and O.</del>	7.	Farmer <i>M</i>
	J 78	Scott, Cornelius	e pt 13	4	M F and O.	7.	Farmer
	228	Scott, Robert	e hf 19	2	M F and T.	7.	Farmer
J208		Seed, Nathaniel	s qr 13, s w pt 14	2	M F and O.	5.	Farmer
J253		Smith, Alex	w hf 27	2	M F and O.	6.	Farmer
J254		Smith, Malcolm	s hf 27	2	M F and O.	6.	Farmer
J361		Smith, Hector	n pt 27	1	M F and O.	6.	Farmer
<i>H. J. M.</i>		<i>Smith John</i>		<i>1</i>	<i>M, F, &amp; O</i>	<i>"</i>	<i>WX</i>
J311		Tarrant, Henry	w hf 17	1	M F and T.	1.	Farmer
J368		Tomlinson, John	w pt 30	1	M F and T.	6.	Farmer
	369	Tomlinson, Leonard	w pt 30	1	M F and T.	6.	Farmer
J370		Tomlinson, H E	w pt 30	1	M F and T.	6.	Farmer
J153		Wardell, Joseph	.25	3	M F and O.	7.	Farmer
J154		Wardell, Wesley	.25	3	M F and O.	7.	Farmer
J155		Wardell, William	.25	3	M F and O.	7.	Farmer
J230		Wardell, John E.	w hf 21	2	M F and O.	7.	Farmer
J241		Wardell, Berton	e hf 23	2	M F and O.	7.	Farmer
	255	Wood, Wm	n hf 28	2	M F and O.	6.	Farmer
J256		Wood, J W	n hf 28	2	M F and O.	6.	Farmer
J257		Wood, Samuel	s hf 28, gore 29	2	M F and O.	6.	Farmer
	314	Walker, Robert	e hf 18	1	M F and O.	1.	Farmer
J315		Walker, Thos	e hf 18	1	M F and O.	1.	Farmer

Occupation.	Jan. No. on Roll.	NAME.	LOT.	Concession or Street.	Other Description.	P.O.	Occupation.
Farmer	316	Walker, James sr.	w hf 19	1	M F and O.	1.	Farmer
Farmer	318	Walker, Samuel	w hf 19	1	M F and O.	1.	Farmer
Farmer	319	Walker, Andrew	w hf 19	1	M F and O.	1.	Farmer
Farmer	320	Walker, James jr	e hf 19	1	M F and O.	1.	Farmer
Farmer	326	Walsh, John sr	e pt 21	1	M F and O.	1.	Farmer
Farmer	327	Walsh, J jr	e pt 21	1	M F and O.	1.	Farmer
Farmer	328	Walsh, Walter	e pt 21	1	M F and O.	1.	Farmer
Farmer	329	Walsh, Thomas	e pt 21	1	M F and O.	1.	Farmer
Farmer	357	Whiting, David	e hf 28	1	M F and O.	1.	Farmer
Farmer	358	Whiting, Thomas	w hf 28	1	M F and O.	1.	Farmer
Farmer	359	Whiting, Richard	n hf e hf 29	1	M F and O.	1.	Farmer
Farmer	363	Ward, Truman	n hf e hf 29	1	M F and O.	1.	Farmer
Farmer	364	Ward, Dennis	n hf e hf 29	1	M F and O.	1.	Farmer
Farmer	365	Ward, Benson	n hf e hf 29	1	M F and O.	1.	Farmer

**PART II.—Persons Entitled to Vote at Municipal Elections ONLY.**

Farmer	225	Ayer, Mrs Jane	w pt 19	2	Owner	7.
Farmer	138	Brown, Miss Margaret	on 18	3	Owner	7.
Farmer	372	Bishopp, David	w hf 29	1	Owner	1.
Farmer	258	Cawthrop, Thos	e qr 25, w qr 26	2	Owner	1.
Farmer	81	Coulton, Robt	e pt 13	4	Owner	8.
Farmer	82	Conlton, Edward	e pt 13	4	Owner	8.
Farmer	243	Elliott, Mrs Effie	w pt 24	2	Owner	7.

Polling Sub-Division No. 2.

Jur. No. on Roll.	NAME.	LOT.	Concession or Street.	Other Description.	P.O.	Occupation.
75	Fraser, Mrs E	15	4	Owner	8	
148	Giffen, Mrs Isabella	pt 22	3	Owner	7	
330	Gale, Wm	w hf 14	1	Owner	1	
215	Henderson, Mrs G	pt 16	2	Owner	5	
879	McLeish, Miss M	.22	1	Owner	8	
880	McLeish, Miss B	.22	1	Owner	8	
141	Milliken, John	s hf n hf 19	3	Owner	8	
881	McLaughlin, John	e hf 19	2	Owner	8	
882	Nettleton, A H	n hf 19	3	Owner	1	
		gore 19	4	Owner	1	
883	ONeil, Mrs Margt	e hf 25	1	Owner	1	
884	Robotham, Mrs A	e hf 18	2	Owner	7	
886	Sifton, Mrs J	w hf 17	1	Owner	1	
887	Smith, John	e hf 26	1	Owner	Petrol	
332	Stewart, John	.22	1	Tenant	8	

**PART III.—Persons Entitled to Vote at Elections to the Legislative Assembly ONLY.**

223	Arrand, Fred	lot 18	2	M F	7	Laborer
888	Kelly, Thos		3	M F	7	Laborer
889	Manion, Martin		3	M F	7	Laborer

*H. J. M. East. Jessie 4 M F 7 " W*

Com  
PART  
Jur. No. Roll  
J548  
J549  
550  
J555  
556  
J569  
J570  
J803  
804  
J807  
J378  
379  
400  
J399  
J403  
404  
405  
J561  
562  
J563

**Polling Sub-Division No. 3,**

Comprising Lots Nos. 1 to 11 in the 1st, 2nd, 3rd, 4th and 5th Concessions,  
South of the Egremont Road.

**PART I.—Persons Entitled to Vote at BOTH Municipal Elections and Elections to the Legislative Assembly.**

Jur.	No. on Roll.	NAME.	LOT.	Concession or Street.	Other Description.	P.O.	Occupation.
	J548	Alderson, Amos . . w hf 3 . . . . .	3	3	M F and O . .	3 .	Farmer
	J549	Alderson, Nelson . . w hf 3 . . . . .	3	3	M F and O . .	3 .	Farmer
	550	Alderson, Prosper. . e pt 5 . . . . .	5	3	M F and O . .	3 .	Farmer
	J555	Armstrong, Frank . . w hf 8 . . . . .	8	3	M F and T . .	3 .	Farmer
	556	Armstrong, Dell . . w hf 8 . . . . .	8	3	M F and T . .	3 .	Farmer
	J569	Alexander, Thos. . e $\frac{3}{4}$ 11 . . . . .	11	3	M F and O . .	5 .	Farmer
	J570	Alexander, John . . e $\frac{3}{4}$ 11 . . . . .	11	3	M F and O . .	5 .	Farmer
	J803	Armstrong, Wm. . pt of 6 . . . . .	6	5	M F and O . .	5 .	Blacks'ith
	804	Armstrong, R A . pt of 6 . . . . .	6	5	M F and O . .	3 .	Blacks'ith
	J807	Armstrong, John . pt 6 . . . . .	6	5	M F and O . .	3 .	Blacks'ith
	J378	Bolton, John A . . w hf 3 . . . . .	3	1	M F and O . .	5 .	Farmer
	379	Bolton, Walter . . w hf 3 . . . . .	3	1	M F and O . .	5 .	Farmer
	400	Barrett, Richard . . 10 . . . . .	10	1	M F and O . .	5 .	Farmer
	J399	Barrett, J F . . . . . 10 . . . . .	10	1	M F and O . .	5 .	Farmer
	J403	Bateman, F J . . . . . on 11 . . . . .	11	1	M F and O . .	5 .	M D
	404	Baptiste, Geo . . . pt 11 . . . . .	11	1	M F and O . .	5 .	Farmer
	405	Baptiste, Crawford . pt 11 . . . . .	11	1	M F and O . .	5 .	Farmer
	J561	Brown, Joseph . . . . . e hf 9 . . . . .	9	3	M F and O . .	5 .	Farmer
	562	Brown, Geo W . . . . . e hf 9 . . . . .	9	3	M F and O . .	5 .	Farmer
	J563	Brown, Cecil . . . . . e hf 9 . . . . .	9	3	M F and O . .	5 .	Farmer

Occupation.

ative

Laborer

Laborer

Laborer

" W

## Polling Sub-Division No. 3.

Jur. No. on Roll	NAME.	LOT.	Concession or street.	Other Description.	P.O.	Occupation.
677	Bowley, James	..e hf 11	.....4	.....M F and O..	1.	Farmer
J737	Blean, W P	.....e pt 5	.....5	.....M F and T..	3..	Farmer
751	Brown, Wm	.....e qr 10	.....4	.....M F and T..	3..	Farmer
J825	Beekton, James	.....on 6	.....5	.....M F and O..	3	
J824	Beekton, G F	.....on 6	.....5	.....M F and O..	3..	Drover
J833	Brown, J H	.....on 6	.....5	.....M F and O..	3..	Drover
J849	Brock, W J	.....on 6	.....5	.....M F and O..	3	Carpenter
374	Conkey, Robert	.....e hf 1, s w qr 4	.....1 and 3	.....M F and O..	4..	Farmer
J375	Conkey, Nathaniel	.....e hf 1, s w qr 4	.....1 and 3	.....M F and O..	4..	Farmer
J376	Conkey, George	.....e hf 1, s w qr 4	.....1 and 3	.....M F and O..	4.	Farmer
J382	Conkey, Fred	.....w hf 4	.....1	.....M F and O..	5..	Farmer
J387	Callaghan, Wm	.....w hf 6	.....1	.....M F and O..	5..	Farmer
J383	Callaghan, T P	.....w hf 6	.....1	.....M F and O..	5..	Farmer
J389	Conkey, Wm	.....e hf 6, w hf 7	.....1	.....M F and O..	5..	Farmer
J390	Conkey, Geo F	.....e hf 6, w hf 7	.....1	.....M F and O..	5	Farmer
J398	Chapman, Joseph	.....on e hf 5	.....1	.....M F and T..	5	Farmer
410	Connor, W J	.....on 11	.....1	.....M F and T..	5..	Farmer
412	Callaghan, Terrance	.....e qr 11 and a	.....i s	.....M F and O..	5..	Farmer
J113	Callaghan, T J	.....e qr 11	.....1 n	.....M F and O..	5..	Farmer
114	Callaghan, F G	.....e qr 11	.....1 n	.....M F and O..	5..	Farmer
J464	Chambers, John	.....cen pt 1	.....2	.....M F and O..	4..	Farmer
J468	Chambers, Geo	.....e pt 1	.....2	.....M F and O..	4..	Farmer
J472	Carrothers, John	.....e hf 4	.....2	.....M F and O..	3..	Farmer
J473	Carrothers, Thos	.....w qr 5	.....2	.....M F and O..	3..	Farmer
J481	Carrothers, James	.....n hf 9	.....2	.....M F and O..	5..	Farmer
J482	Carrothers, Eldon	.....n hf 9	.....2	.....M F and O..	5	Farmer
483	Carrothers, Lewis	.....n hf 9	.....2	.....M F and O..	5	Farmer

Hjm

Bacon

W  
Clegg

Hjm

Occupation.	Jur. No. on Roll.	NAME.	LOT.	Concession or Street.	Other Description.	P.O.	Occupation.
Farmer	1484	Carrothers, Wm	s hf 9	2	M F and O.	5	Farmer
Farmer	1537	Chambers, Thos	e hf 1	3	M F and O.	4	Farmer
Farmer	1538	Chambers, Swanton	e hf w hf 3	2	M F and T.	4	Farmer
	1544	Carrothers, Austin	w hf 4	3	M F and O.	4	Farmer
Drover	1666	Carroll, Wm	w hf 2	4	M F and O.		
Drover	724	Carroll, Thos	w hf 2	5	M F and O.	3	Farmer
Carpenter	725	Carroll, Wm	w hf 2	5	M F and O.	3	Farmer
Farmer	1794	Cook, Lycurgus	lots 6, 7, 12, 13	5	M F and T.	3	Butcher
Farmer	1795	Carmody, John	lots 6, 7, 12, 13	5	M F and T.	3	Butcher
Farmer	1478	Dowding, Wm	e qr 7, w hf 8	2	M F and O.	3	Farmer
Farmer	1479	Dowding, J E	e qr 7, w hf 8	2	M F and O.	3	Farmer
Farmer	1480	Dowding, W L	e qr 7, w hf 8	2	M F and O.	3	Farmer
Farmer	1539	Dowding, James	w hf 2, e hf w hf 2, w hf 8	2 & 3	M F and O.	3	Farmer
Farmer	1546	Dowding, Albert	w hf 2, e hf w hf 2, w hf 8	2 & 3	M F and O.	3	Farmer
Farmer	1667	Demaray, Simeon	e hf 8, w qr 9, e hf 6	4 & 2	M F and O.	3	Farmer
Farmer	1668	Demaray, Richard	e hf 8, w qr 9, e hf 6	4 & 2	M F and O.	3	Farmer
Farmer	1669	Demaray, A F	e hf 8, w qr 9, e hf 6	4 & 2	M F and O.	3	Farmer
Farmer	1834	Denning, J B	on 7	5	M F and T.	3	M
Farmer	1837	Dowding, Reuben	on 7	5	M F and T.	3	B S
Farmer	1839	Denning, J A	on 6	5	M F and O.	3	
Farmer	1854	Dowding, Geo	on 7	5	M F and O.	3	Miller
Farmer	1855	Dowding, W H	on 7	5	M F and O.	3	Miller
Farmer	1856	Dowding, G J	on 7	5	M F and O.	3	Miller
Farmer	1551	Earley, James	w hf 6, w hf 6	3 and 2	M F and O.	3	Farmer
Farmer	1552	Earley, S W	e hf 6, pt 6	3 and 5	M F and O.	3	Farmer
Farmer	1553	Earley, J W	w hf 7	3	M F and O.	3	Farmer

*1/2 m Carmody " " 5- M F + 2 on 3 B. Mason W*

*1/2 m Tell Robt on 6 5- M F + 2 on W*

*Farmer W Cleary*

Jur.	No. on Roll.	NAME.	LOT.	Concession or Street.	Other Description.	P.O.	Occupation.
	J554	Earley, Geo	hf 7				
	J567	Eakins, John	w qr 11, pt 12	3	M F and O.	3.	Farmer
	J568	Eakins, J R	w qr 11, pt 12	3	M F and O.	3.	Farmer
	J673	Earley, W H	w qr 10	4	M F and O.	3.	Farmer
	<i>H-jon</i> 723	Easterbrooke, Joseph	s pt 1	5	<del>M F and O.</del>	3.	Farmer <i>W</i>
	J728	Earley, J J	w ht 3	5	M F and O.	3.	Farmer
	J726	Fuller, Wm	e hf 2	5	M F and O.	3.	Farmer
	727	Fuller, Albert	e hf 2	5	M F and O.	3.	Farmer
	J796	Foster, Chas	on 7	5	M F and O.	3.	Farmer
	J797	Foster, George	on 7	5	M F and O.	3.	Farmer
	J798	Foster, J J	on 7	5	M F and O.	3.	Farmer
	J799	Foster, Frank	on 7	5	M F and O.	3.	Farmer
	J800	Foster, C H	on 7	5	M F and O.	3.	Farmer
	J801	Foster, G W	on 7	5	M F and O.	3.	Farmer
	802	Foster, W H	on 7	5	M F and O.	3.	Farmer
	J396	Galloway, W T	e hf 9	1	M F and O.	3.	Farmer
	J397	Galloway, W R	e hf 9	1	M F and O.	3.	Farmer
	J657	Galbraith, Robert	e hf 5, w hf 6	4	M F and O.	3.	Farmer
	J658	Galbraith, David	e hf 5, w hf 6	4	M F and O.	3.	Farmer
	J659	Galbraith, James	e hf 6	4	M F and O.	3.	Farmer
	J736	Galbraith, Thos	scen pt 5	5	M F and O.	3.	Farmer
			e hf 4	3	M F and O.	3.	Farmer
	835	Gosden, John	on 7	5	M F and O.	3.	Farmer
	J863	Griffith, Wm	on 7	5	M F and O.	3.	
	864	Griffith, James	on 7		M F and O.	3.	

Polling Sub-Division No. 3.

Occupation.	Jur. No. on Roll.	NAME.	LOT.	Concession or Street.	Other Description.	P. O.	Occupation.
Farmer	J373	Hawkins, Geo...	w hf 1	1	M F and O.	3.	Farmer
Farmer	J406	Hudson, Geo	pt 11, w hf 10	1 n, 1 s, & 2	M F and O.	3.	Blacks'ith
Farmer	407	Hudson, Wilbert.	pt 11, w hf 10	1 n, 1 s, & 2	M F and O.	3.	Farmer
Farmer	J485	Humphries, Wm.	w qr 10	2	M F and O.	3.	Farmer
Farmer	J559	Houlton, Henry	e hf 8 and w hf 9	2 and 3	M F and O.	3.	Farmer
Farmer	J560	Houlton, Ernest	e hf 8 and w hf 9	2 and 3	M F and O.	3.	Farmer
Farmer	J564	Humphries, Henry	w hf 10	3	M F and O.	3.	Farmer
Farmer	J565	Humphries, Willard.	w hf 10	3	M F and O.	3.	Farmer
Farmer	J643	Harris, Joseph	w hf 1	4	M F and O.	3.	Farmer
Farmer	J644	Harris, J W	w hf 1	4	M F and O.	3.	Farmer
Farmer	J738	Hull, G S sr	w hf 6, s hf 12	5 and 4	M F and O.	3.	Farmer
Farmer	J739	Hull, G S jr	w hf 6, s hf 12	5 and 4	M F and O.	3.	Farmer
Farmer	J740	Hull, Wm.	w hf 6, s hf 12	5 and 4	M F and O.	3.	Farmer
Farmer	J741	Hull, Frank	w hf 6, s hf 12	5 and 4	M F and O.	3.	Farmer
Farmer	J827	Hawkins, Wm.	s w cor e hf 6	5 and 4	M F and O.	3.	Farmer
Farmer	646	Hollingsworth, Chas.	w hf 2	4	M F and T.	3.	Farmer
Farmer	411	Irwin, R Fulton	on 11	1	M F and T.	5.	Clergy'an
Farmer	J536	Jarrett, R.	n hf w hf 1	3	M F and O.	5.	Farmer
Farmer	J655	Johnson, Benj	w hf 5	4	M F and O.	5.	Farmer
Farmer	J656	Johnson, D C	w hf 5	4	M F and O.	5.	Farmer
Farmer	J485	Kerswell, Chas	w hf 5, e hf 5	1	M F, O & T.	5.	Farmer
Farmer	J470	Kineade, W J	e hf 3	2	M F and O.	3.	Farmer
Farmer	J829	Langford, J W	on 6	5	M F and O.	3.	
Farmer	J830	Langford, Geo	on 6	5	M F and O.	3.	



## Polling Sub-Division No. 3.

No. on Roll.	NAME.	LOT.	Concession or Street.	Other Description.	P.O.	Occupation.
J831	Langford, Elmer	on 6	5	M F and O.	3.	
J832	Lambert, Elijah	on 6	5	M F and T.	3.	
J383	McChesney, David	e hf 4, cen pt 4	1 n, 1 s	M F and O.	5.	Farmer
J384	McChesney, W J.	e hf 4, cen pt 4	1 n, 1 s	M F and O.	5.	Farmer
J391	McCarthy, Cornelius	e hf 7	1	M F and O.	5.	Farmer
J486	Muxlow, Edwin	e hf 11	2	M F and T.	5.	Farmer
J534	McGugan, Charles	s hf w hf 1	3	M F and T.	3.	Farmer
J648	Maher, James	e hf 3	4	M F and O.	3.	Farmer
J649	Maher, Daniel	e hf 3	4	M F and O.	3.	Farmer
650	Maher, J W	e hf 3	4	M F and O.	3.	Farmer
651	Maher, Peter	e hf 3	4	M F and O.	3.	Farmer
652	Maher, Michael	e hf 3	4	M F and O.	3.	Farmer
654	Mathews, Geo H.	e hf 4	4	M F and O.	3.	Farmer
J660	Mitchell, Robert	w hf 7	4	M F and O.	3.	Farmer
		n w pt 7	5	M F and O.	3.	Farmer
662	Morgan, A E	e hf 7 and lots on 6	4 and 5	M F and O.	3.	Farmer
J663	Morgan, E A	e hf 7 and lots on 6	4 and 5	M F and O.	3.	Farmer
J664	Munn, J W	s w eor 8	4	M F and O.	3.	Farmer
J671	Morgan, S P	e hf w hf 9	4	M F and O.	3.	Farmer
J675	Morgan, W P	w hf 11, w hf 12	4 and 5	M F and O.	3.	Farmer
J676	Morgan, W A	w hf 11, w hf 12	4 and 5	M F and O.	3.	Farmer
J718	McKenny, Peter	w pt 1 and e hf 1	5	M F and O.	3.	Farmer
J719	McKenny, John	w pt 1 and e hf 1	5	M F and O.	3.	Farmer
J720	McKenny, Terrence	w pt 1 and e hf 1	5	M F and O.	3.	Farmer
J721	McKenny, Dan	w pt 1 and e hf 1	5	M F and O.	3.	Farmer
J722	McKenny, Bernard	w pt 1 and e hf 1	5	M F and O.	3.	Farmer
J731	Maher, Michael	w hf 4	5	M F and O.	3.	Farmer
J732	Mathews, C W	cen pt 4	5	M F and O.	3.	Farmer

Polling Sub-Division No. 3.

Jur.	No. on Roll.	NAME.	LOT.	Concession or Street.	Other Description.	P.O.	Occupation.
	J743	Morgan, Robert	e qr 7, w hf 8	5	M F and O.	3	Farmer
	J744	Morgan, Grenville	e qr 7, w hf 8	5	M F and O.	3	Farmer
	745	Morgan, Herbert	e qr 7, w hf 8	5	M F and O.	3	Farmer
	J746	Muxlow, Wm	e hf 8 and w $\frac{3}{4}$ 9	5	M F and T.	3	Farmer
	J747	Morgan, John	e hf 8 and w $\frac{3}{4}$ 9	5	M F and O.	3	Farmer
	J748	Morgan, Geo W	e hf 8 and w $\frac{3}{4}$ 9	5	M F and O.	3	Farmer
	J750	Morgan, Richard	{ e hf 10	5	M F and O.	3	Farmer
			{ e qr 10, e hf w hf 10.4	4	M F and T.	3	Farmer
	812	Mills, John	on 7	5	M F and T.	3	Farmer
	J813	Mills, Frank	on 7	5	M F and T.	3	Farmer
	J815	McCallum, Alex	on 6	5	M F and T.	3	
	J865	McMahon, John	on 7	5	M F and O.	3	
	J846	Mathews, Henry sr	pt e hf 6	5	M F and O.	3	Farmer
	847	Mathews, Henry jr	pt e hf 6	5	M F and O.	3	Farmer
	J828	McIntyre, John	on 6	5	M F and T.	3	H
	J848	Newton, Richard	e hf 2	4	M F and O.	3	Farmer
	J647	Newton, Wm	cen pt e hf 6	5	M F and O.	3	Farmer
	814	O'Neil, David	on 6	5	M F and T.	3	Sta Agent
	J665	Patterson, Thos	{ w hf 8	4	M F and O.	3	Farmer
			{ w hf e hf 10, e qr 9	4 and 5	M F and O.	3	Farmer
	752	Patterson, Samuel	w hf 11	5	M F and O.	3	Farmer
	J753	Patterson, Wm	w hf 11	5	M F and O.	3	Farmer
	J754	Patterson, John	w hf 11	5	M F and O.	3	Farmer
	755	Patterson, James	w hf 11	5	M F and O.	3	Farmer
	749	Patterson, Robert	w hf 10	5	M F and O.	3	Farmer

Jur.	No. on Roll.	NAME.	LOT.	Concession or Street.	Other Description.	P.O.	Occupation.
	402	Raison, Charles	on 11	1 s, 1 n	M F and O	3	Farmer
J463		Routley, Walter	w qr 1	2	M F and O	3	Farmer
J469		Routley, Amos	w qr 3	2	M F and O	3	Farmer
J557		Rivers, George	s hf w hf 1	3	M F and O	3	Farmer
J545		Redmond, Wm	w pt 5, pt 7	3 and 5	M F and O	3	Farmer
J546		Redmond, W P	w pt 5, pt 7	3 and 5	M F and O	3	Farmer
J547		Redmond, M R	w pt 5, pt 7	3 and 5	M F and O	3	Farmer
J670		Rogers, W S	e hf w hf 9	4	M F and T	3	Farmer
J729		Richardson, John	e hf 3	5	M F and O	3	Farmer
J730		Richardson, H F	e hf 3	5	M F and O	3	Farmer
J756		Rapley, Chas	e hf 11, w hf 13	5	M F and O	3	Farmer
J808		Richardson, B jr	on 6	5	M F and O	3	Farmer
J818		Richardson, B sr	on 6	5	M F and O	3	Farmer
J820		Rogers, J F B	on 6	5	M F and O	3	Doctor
J857		Rogers, Alfred	on 6	5	M F and O	3	Merchant
J859		Richardson, James	on 7 and w hf 3	5 and 4	M F and O	3	Miller
J860		Richardson, Fred	w pt e hf 7	5	M F and O	3	Miller
J861		Richardson, John H	w pt e hf 7	5	M F and O	3	Miller
J468		Sullivan, Wm	e hf 2	2	M F and O	3	Farmer
J471		Sullivan, J N	w hf 4	2	M F and O	3	Farmer
J541		Sullivan, John	e hf 3 and e hf 2	3	M F and O	3	Farmer
J542		Sullivan, E A	e hf 3 and e hf 2	3	M F and O	3	Farmer
J897		Smith, James	e hf 9	4	M F and T	3	Farmer
J898		Smith, W R	n e cor 6	5	M F and O	3	S M
899		Smith, Samuel	pt 6	5	M F and O	3	S M

Jur.	No. on Roll.
J408	T
J474	T
J474	T
475	T
J476	T
477	T
J465	T
851	T
J852	T
J566	T
J392	U
J393	U
394	U
J395	U
J840	V
J377	V
J381	V
J890	V
J645	V
J674	V
J733	W
J734	W

Jur.	No. on Roll.	NAME.	LOT.	Concession or Street.	Other Description.	P.O.	Occupation.
J408		Taylor, George.	sub lots N & S E R on 11	1 s, 1 n.	M F and O..	5.	Farmer
J474		Thomas, Wm	e $\frac{3}{4}$ 5	2	M F and O..	3.	Farmer
J474		Thomas, J W	e $\frac{3}{4}$ 5	2	M F and O..	3.	Farmer
475		Thomas, W L	e $\frac{3}{4}$ 5	2	M F and O..	3.	Farmer
J476		Thomas, James	w $\frac{3}{4}$ 7	2	M F and O..	3.	Farmer
477		Thomas, Robt	w $\frac{3}{4}$ 7	2	M F and O..	3.	Farmer
J465		Trotter, Wm	e pt 1	2	M F and T.	3.	Farmer
851		Trotter, Wm sr	pt lot 6	5	M F and T..	3.	
J852		Trotter, Jared	pt lot 6	5	M F and T..	3.	
J566		Thrower, Jacob	e hf 10	3	M F and O..	5.	Farmer
J392		Upton, Patriek	cen pt 8	1	M F and O..	5.	Farmer
J393		Upton, Robert	w qr 8, e qr 8	1	M F and O..	5.	Farmer
394		Upton, Edward	w qr 8, e qr 8	1	M F and O..	5.	Farmer
J395		Upton, John	w qr 8, e qr 8	1	M F and O..	5.	Farmer
J840		Vickery, John	pt 6	5	M F and O..	3.	Farmer
J377		Wallace, James	w hf 2	1	M F and O..	4.	Farmer
J381		Wilson, James	e hf 3, $\frac{1}{4}$ 2	1	M F and O..	4.	Farmer
J890		Wood, Thos	e hf 5	1	M F and O..	1.	Farmer
J645		Waltham, Richard	e hf 1	1	M F and O..	3.	Farmer
J674		Waite, Solomon	e qr 9, w hf e hf 10	4 and 5	M F and T.	3.	Farmer
J733		Wright, F W	e qr 4	5	M F and O..	3.	Farmer
J734		Wright, Edwin	w pt 5	5	M F and O..	3.	Farmer

Jur.	No. on Roll	NAME.	LOT.	Concession or Street.	Other Description.	P.O.	Occupation.
J735		Wright, E A	..... w pt 5	.....5	.....M F and O..	3..	Farmer
J805		Westgate, Wm	.....on 6	.....5	.....M F and O..	3..	Farmer

**FART II.—Persons Entitled to Vote at Municipal Elections ONLY.**

		Alexander, W H.	.....e $\frac{3}{4}$ 11	.....3	.....Owner	.....	Farmer
		Bolton, Chas sr	.....w hf 3	.....1	.....Owner	.....8..	Farmer
		Bowley, F G	.....e hf 9	.....4	.....Owner	.....3..	Farmer
838		Blean, Mrs E	.....e pt 5 and pt 6	.....5	.....Owner	.....3..	
823		Beckton, Mrs M.	.....on 6	.....5	.....Owner	.....3..	
842		Brandreth, Miss Vina.	.....on 6	.....5	.....Owner	.....3..	
841		Brandreth, Mrs	.....on 6	.....5	.....Owner	.....3..	
822		Cameron, J W	.....on 6	.....5	.....Owner	.....3..	
653		Carroll, Mrs M	.....w hf 4	.....4	.....Owner	.....3..	
845		Doan, John	.....on 7	.....5	.....Owner	.....	
836		Gosden, Mrs M	.....on 7	.....5	.....Owner	.....3..	
666		Holt, Mrs E	.....w qr 2	.....2	.....Owner	.....3..	
667		Holt, Stella	.....w qr 2	.....2	.....Owner	.....3..	
926		Hawkins, Mrs M	.....on 6	.....5	.....Owner	.....3..	
844		Kellett, W B	.....on 6	.....5	.....Owner	.....	Merchant

*H. J. M. Lee*

No. on Roll.	NAME.	Loc.	Concession or Street.	Other Description.	P.O.	Occupation.
921	King, Mrs L	on 6	5	Owner		Merchant
<i>H. J. M.</i>	<i>Leitch Mrs M</i>		<i>3</i>	<i>Owner</i>		<i>Merchant</i>
401	Mills, Mrs S	on 10	1	Owner		5.
661	Morgan, Mrs E	e hf 7	4	Owner		5 Merchant
892	Morgan, Mrs C	e hf w hf 10, e qr 10.	4	Owner		5..
842	O'Neil, Fred	on 6	5	Owner		1..H
811	Richardson, Mrs J.	on 6	5	Owner		3..
496	Thrower, Isaac	w hf 20, w hf 11	1 and 2	Owner		1..
487	Thrower, Albert	e hf 11	2	Owner		
891	Turner, Mrs	on 6	5	Tenant		3..

**PART III.—Persons Entitled to Vote at Elections to the Legislative Assembly ONLY.**

<i>H. J. M.</i>	<del>892 Carmoody, James</del>	<del>on 7</del>	<del>5</del>	<del>M F</del>	<del>3..</del>	
	819 Carmoody, Thos	on 7	5	M F		3..
	806 Clarke, A E	on 6	5	M F		3..
	867 Fancy, John	on 6	5	M F		3..
	866 Pearce, James	on 7	4	M F		3..
	868 Stinson, Frank	on 3	5	M F		3..
	543 Sausbury, David	on 4	2	M F		3..

## Polling Sub-Division No 4,

Comprising Lots Nos. 12 to Townline East in the 1st, 2nd, 3rd, 4th and 5th Concessions South of the Egremont Road.

### PART I.—Persons Entitled to Vote at BOTH Municipal Elections and Elections to the Legislative Assembly.

Jur.	No. on Roll.	NAME.	LOT.	Concession or Street.	Other Description.	P.O.	Occupation.
	591	Alexander, A E	w hf 16	3	M F and O..	9..	Vet Sur
	786	Armstrong, W A.	pt 19	5	M F and O..	1..	Farmer
J493		Annett, Henry	on 16	2	M F and T..	9..	Farmer
J417		Brock, Albert..	{ w hf 13 .....	1 s	M F and O..	5	Farmer
			{ s w qr 13, w hf e hf 8..	J n, 2 n	Tenant		
J418		Brock, Richard	{ e hf 13 ..	1	M F and O..	5..	Farmer
			{ w lf 9 .....	3	Tenant		
J423		Broek, Arthur	... w hf 14	1	M F and O..	5..	Farmer
424		Broek, Harry W.	pt e hf 12	3	M F and O..	5..	Farmer
425		Broek, A G	... pt e hf 12	3	M F and O..	5..	Farmer
J427		Barron, J	... w qr 15	1	M F and O..	5..	Farmer
J481		Bishopp, Edward	... e hf 14	2	M F and O..	9..	Farmer
J482		Bishopp, Alex	... e hf 14	2	M F and O..	9..	Farmer
483		Bishopp, George	... e hf 14	2	M F and O..	9..	Farmer
J497		Brown, J A	... e hf 19	2	M F and O..	9..	Farmer
J517		Boguc, Thos	... 25	2	M F and O..	1..	Farmer
J518		Bogue, James jr.	... 25	2	M F and O..	1..	Farmer
519		Buttery, George	... n pt 26	2	M F and O..	1..	Farmer
J520		Buttery, J T	... s e pt 26	2	M F and O..	1..	Farmer

Jur. No.  
Ro

J521

J526

J527

J528

J604

J607

J634

J635

J636

J637

J694

J716

J437

J592

J593

J594

595

J600

J601

J611

J699

J700

J700

J764

Jur.	No. on Roll.	NAME.	LOT.	Concession or Street.	Other Description.	P.O.	Occupation.
	J521	Buttery, W G	... w pt 26	3	M F and O	1	Farmer
	J526	Buttery, W I	... e pt 26, n pt 27	2	M F and O	1	Farmer
	J527	Buttery, W E	... e pt 26, n pt 27	3	M F and O	1	Farmer
	J528	Buttery, R M	... e pt 26, n pt 27	3	M F and O	1	Farmer
	J604	Bolton, A H	... pt 22	3	M F and O	1	Farmer
	J607	Bolton, Wm	... on 22	3	M F and O	1	Farmer
	J634	Bogue, James	{ n pt 23, s e pt 23 { e n pt w hf 22	{ 3 { 2	M F and O	1	Farmer
	J635	Bogue, Geo	{ n pt 23, s e pt 23 { e n pt w hf 22	{ 3 { 2	M F and O	1	Farmer
	J636	Bogue, John	{ n pt 23, s e pt 23 { e n pt w hf 22	{ 3 { 2	M F and O	1	Farmer
	J637	Bogue, W R	{ n pt 23, s e pt 23 { e n pt w hf 22	{ 3 { 2	M F and O	1	Farmer
	J694	Bolton, Richard	... on 12	3	M F and T	9	Farmer
	J716	Bradshaw, Ashley	... pt 19	4	M F and O	1	Farmer
	J437	Campbell, G A	... e hf 17	1	M F and O	1	Farmer
	J592	Campbell, D S	... e hf 16	3	M F and O	9	Farmer
	J593	Campbell, Archie	... w hf 17	2	M F and O	9	Farmer
	J594	Campbell, D A	... w hf 17	3	M F and O	9	Farmer
	595	Campbell, A D	... n e cor 22	3	M F and O	9	Farmer
	J600	Campbell, Dougal	... s hf 18	3	M F and O	9	Farmer
	J601	Campbell, D J	... w $\frac{1}{2}$ 19, w $\frac{1}{2}$ e $\frac{1}{2}$ 19, s w $\frac{1}{2}$ e $\frac{1}{2}$ 19	3	M F and O	9	Farmer
	J611	Creuse, Nelson	... pt 21	3	M F and O	9	Farmer
	J699	Campbell, D D	... w pt 17	4	M F and O	9	Farmer
	J700	Campbell, Chas	... w pt 17	4	M F and O	9	Farmer
	J700	Campbell, E P	... w pt 17	4	M F and O	9	Farmer
	J764	Currie, John	... e qr 14 and w qr 15	5	M F and O	2	Farmer



Jur.	No. on Roll.	NAME.	LOT.	Concession or Street.	Other Description.	P.O.	Occupation.
J578	J765	Currie, A W	e qr 14 and w qr 15	.5	M F and O..	2..	Farmer
J758	J766	Currie, Thos O	een pt 15	.5	M F and O..	2..	Farmer
J784	J767	Currie, Harold	een pt 15	.5	M F and O..	2..	Farmer
J514	J449	Demaray, Charles	s e $\frac{1}{3}$ 21	1	M F and O..	1	Farmer
J515	J450	Demaray, Allan	s e $\frac{1}{3}$ 21	1	M F and O..	1..	Farmer
J630	J459	Donaldson, J G	on 22	3	M F and O..	1	
J631	J895	Donaldson, B J	e hf 22	1	M F and O..	1..	Farmer
J632	J434	Down, Charles	e hf w hf 15	2	M F and O..	9..	Farmer
J633	J485	Down, Henry	e qr 15	2	M F and O..	9.	Farmer
J775	J498	Douglas, J S	28 and pt 21	2 and 3	M F and T..	1..	Farmer
	J499	Douglas, A	28 and pt 21	2 and 3	M F and T..	1.	Farmer
	J500	Douglas, T W	28 and pt 21	2 and 3	M F and T..	1..	Farmer
356	J502	Dell, W H	s e pt 21	2	M F and O..	1..	
J431	J504	Dell, W C	s w cor 22	2	M F and O..	1..	Farmer
J432	J505	Dell, Fred	s w cor 22	2	M F and O..	1..	Farmer
J433	J509	Dell, Alex	on 22	2	M F and O..	1	Farmer
J434	J516	Dell, Ernest	on 22	2	M F and O..	1..	Farmer
J435	511	Dell, Fred A	on 22	2	M F and O..	1..	Farmer
J436	J513	Douglas, J M	e hf 22	2	M F and O..	1	Farmer
J454	J678	Downer, Ira	w hf 13, n hf 12	3 and 4	M F and O..	2..	Farmer
J460	J711	Dubois, John	e pt w hf 19	4	M F and O..	1..	Farmer
J598	J475	Ellis, Wm	w hf 13, w qr 14	2	M F and O..	9..	Farmer
J70	J476	Ellis, W J	w hf 13, w qr 14	2	M F and O..	9..	Farmer
J42	J477	Ellis, James	w hf 13, w qr 14	2	M F and O..	9..	Farmer
J45	478	Ellis, David	w hf 13, w qr 14	2	M F and O..	9..	Farmer

Jur.	No. on Roll.	NAME.	LOT.	Concession or Street.	Other Description.	P.O.	Occupation.
J578		Eastman, C M . . . . .	w hf 14, pt 31 . . . . .	3 and 1 . . . . .	M F, O & T . . . . .	9 . . . . .	Farmer
J758		Evoy, Ephraim . . . . .	hf 13 . . . . .	5 . . . . .	M F and O . . . . .	2 . . . . .	Farmer
J784		Evoy, Geo . . . . .	e cor 18 . . . . .	5 . . . . .	M F and O . . . . .	1 . . . . .	Butcher
J689		Eastman, Wesley . . . . .	hf 16 . . . . .	4 . . . . .	M F and T . . . . .	1 . . . . .	Farmer
J514		Frank, James . . . . .	w hf 23 . . . . .	2 . . . . .	M F and O . . . . .	1 . . . . .	Farmer
J515		Frank, Robert . . . . .	w hf e hf 23 . . . . .	2 . . . . .	M F and O . . . . .	1 . . . . .	Farmer
J630		Frank, C G . . . . .	e hf 22, pt 23 . . . . .	3 . . . . .	M F and O . . . . .	1 . . . . .	Farmer
631		Frank, Joseph A . . . . .	hf 22, pt 23 . . . . .	3 . . . . .	M F and O . . . . .	1 . . . . .	Farmer
632		Frank, Albert . . . . .	e hf 22, pt 23 . . . . .	3 . . . . .	M F and O . . . . .	1 . . . . .	Farmer
633		Frank, H G . . . . .	e hf 22, pt 23 . . . . .	3 . . . . .	M F and O . . . . .	1 . . . . .	Farmer
J775		Fury, Stewart . . . . .	pt 18 . . . . .	5 . . . . .	M F and O . . . . .	1 . . . . .	Farmer
356		Glenn, Walter . . . . .	e hf 27, w qr 26 . . . . .	1 and 1 . . . . .	M F and O . . . . .	6 . . . . .	Farmer
J431		Gare, George . . . . .	w qr 17 . . . . .	1 . . . . .	M F and O . . . . .	1 . . . . .	Farmer
J432		Gare, John . . . . .	w qr 17 . . . . .	1 . . . . .	M F and O . . . . .	1 . . . . .	Farmer
J433		Gare, Moses . . . . .	w qr 17 . . . . .	1 . . . . .	M F and O . . . . .	1 . . . . .	Farmer
J434		Gowrie, Thos . . . . .	e hf w hf 17 . . . . .	1 . . . . .	M F and O . . . . .	1 . . . . .	Farmer
J435		Gowrie, Robt . . . . .	e hf w hf 17 . . . . .	1 . . . . .	M F and O . . . . .	1 . . . . .	Farmer
J436		Gowrie, Frank . . . . .	e hf w hf 17 . . . . .	1 . . . . .	M F and O . . . . .	1 . . . . .	Farmer
J454		Giffin, James . . . . .	w hf 25 . . . . .	1 . . . . .	M F and O . . . . .	6 . . . . .	Farmer
J460		Giffin, Andrew . . . . .	n e qr 29 . . . . .	1 . . . . .	M F and O . . . . .	6 . . . . .	Farmer
J598		Gough, Thos E . . . . .	een pt w hf 19 . . . . .	4 . . . . .	M F and O . . . . .	1 . . . . .	Farmer
J709		Graham, Allen . . . . .	n hf 18 . . . . .	3 . . . . .	M F and O . . . . .	1 . . . . .	Farmer
J426		Holmes, O C . . . . .	e hf 14, een pt 9 . . . . .	1 s, 1 n . . . . .	M F and O . . . . .	5 . . . . .	Farmer
J456		Harten, John . . . . .	w pt 26 . . . . .	1 . . . . .	M F and O . . . . .	5 . . . . .	Farmer

Jur.	No. on Roll.	NAME.	LOT.	Concession or Street.	Other Description.	P.O.	Occupation.
J490		Harris, Paul	w hf 18	2	M F and O	1	Farmer
J531		Hansford, Philip	s hf 28, n hf 28	1 and 2	M F and O	1	Farmer
J532		Hansford, P G	s hf 28, n hf 28	1 and 2	M F and O	1	Farmer
J573		Harris, Samuel	w hf 13, pt 10	2 and 3	M F and O	2	Farmer
574		Harris, Edgar	w hf 13, pt 10	2 and 3	M F and O	2	Farmer
J572		Harris, Wm	s pt 12, n pt 12	3 and 4	M F and O	2	Farmer
J713		Healy, John E	pt 19	4	M F and O	1	Farmer
717		Holden, Moses	pt 19	4	M F and O	1	Farmer
		<i>H. J. M. Hansford, J. 14-28</i>		<i>1 &amp; 2</i>	<i>M. F. O.</i>	<i>1</i>	<i>" W</i>
J457		Ireland, Wm	w hf 27 and pt 22	1 and 3	M F and O	6	Farmer
J458		Ireland, G M	w hf 27 and pt 22	1 and 3	M F and O	6	Farmer
J603		James, L P	pt 21	3	M F and O	1	Farmer
J759		Jury, Thomas	pt 14	5	M F and O	2	Farmer
J760		Jury, David	n w pt 14	5	M F and O	2	Farmer
J776		Jones, P H	w pt 18	5	M F and O	1	Farmer
777		Jones, B H	w pt 18	5	M F and O	1	Farmer
J778		Jones, S B	w pt 18	5	M F and O	1	Farmer
J442		Kennings, Robt	e hf 20	1	M F and T	1	Farmer
J443		Kennings, Wm	w hf 20	1	M F and T	1	Farmer
480		Knight, Henry	pt 14, e hf 13	2	M F and O	1	Farmer
J479		Knight, Lonzo	e hf 13 and pt 14	2	M F and O	1	Farmer
J584		Knight, A H	e qr 14	3	M F and O	9	Farmer
585		Knight, Lonzo jr	e qr 14	3	M F and O	9	Farmer
J710		Lightfoot, Thos	s w cor 19	4	M F and O	1	Farmer
J624		Letzgas, Joseph	pt 23	3	M F and O	1	Farmer

Jur.	No. on Roll.
J415	M
416	M
J444	M
445	M
J452	M
J486	M
J579	M
J580	M
581	M
582	M
587	M
J588	M
J589	M
599	M
J619	M
622	M
J627	M
J702	M
J703	M
J704	M
J712	M
J638	M
J639	M
J640	M
683	M

*H. J. M. W*

Jur.	No. on Roll.	NAME.	LOT.	Concession or Street.	Other Description.	P.O.	Occupation.
	J415	McInroy, Alexander.	12	1	M F and O.	5	Farmer
	416	McInroy, J F	12	1	M F and O.	5	Farmer
	J444	Mathews, G D.	n w $\frac{1}{3}$ 21	1	M F and O.	1.	Farmer
	445	Mathews, George.	n w $\frac{1}{3}$ 21	1	M F and O.	1.	Farmer
	J452	McIntyre, J W	w hf 23	1	M F and O.	6.	Farmer
	J486	Miner, George.	e hf 16, w hf 16	2	M F O & T.	1.	Farmer
	J579	Martin, Wm	w hf e hf 14	3	M F and O.	9.	Farmer
	J580	Martin, Gilbert.	w hf e hf 14	3	M F and O.	s.	Farmer
	581	Martin, Silas.	w hf e hf 14	3	M F and O.	9.	Farmer
	582	Martin, Francis.	w hf e hf 14	3	M F and O.	9.	Farmer
	587	McNeice, James.	s hf n hf 15	3	M F and O.	9.	Farmer
	J588	McNeice, John	s hf n hf 15	3	M F and O.	9.	Farmer
	J589	McNeice, Joseph.	w qr 15	2	M F and O.	9.	Farmer
	599	McNeice, John.	s hf 18	3	M F and O.	1.	Farmer
	J619	McPherson, John	on 22	3	M F and O.	1.	Farmer
	622	McEachern, Angus	on 22	3	M F and O.	1.	Farmer
	J627	Marshall, Henry	on 22	3	M F and O.	1.	Farmer
	J702	Mitchell, S S	e pt 17	4	M F and O.	1.	Farmer
	J703	Mitchell, Frank	pt 18	5	M F and O.	1.	Farmer
	J704	Mitchell, Smith	pt 18	5	M F and O.	1.	Farmer
	J712	McIntyre, J D	n pt e hf 19	4	M F and O.	1.	Farmer
		<i>H.J.M. McNeice J.D.</i>		<i>3</i>	<i>M. F + O.</i>	<i>1</i>	<i>McIntyre. W</i>
	J638	Nicholl, Edward.	18	1	M F and O.	1.	Farmer
	J639	Nicholl, Frank	18	1	M F and O.	1.	Farmer
	J640	Nicholl, George	18	1	M F and O.	1.	Farmer
	683	Napper, Chas.	w hf 14	4	M F and T.	2.	Farmer

Jur.	No. on Roll	NAME.	LOT.	Concession or Street.	Other Description.	P.O.	Occupation.
J428		Parker, Harvey	e hf w hf 15	1	M F and O	5	Farmer
J429		Petch, Joseph	e hf 15	1 s, 1 n	M F and O	5	Farmer
J469		Petch, Thos	w hf 12, w hf 11, w hf 16	2 & 1	M F and O	9	Farmer
470		Petch, Morley	w hf 12, w hf 11, w hf 16	2 & 1	M F and T	9	Farmer
471		Petch, Whitford	w hf 12, w hf 11, w hf 16	2 & 1	M F and O	9	Farmer
J472		Petch, James	e hf 12, e hf 10, w hf 20	2 & 1	M F and O	9	Farmer
473		Petch, Frank	e hf 12, e hf 10, w hf 20	2 & 1	M F and O	9	Farmer
474		Petch, Joseph	e hf 12, e hf 10, w hf 20	2 & 1	M F and T	9	Farmer
J491		Paine, John E	w hf 19	2	M F and O	1	Farmer
492		Faine, Benson	w hf 19	2	M F and O	1	Farmer
507		Paine, James A	n pt 21 and pt 22	2	M F and O	1	Farmer
508		Paine, J W	on 22	2	M F and O	1	Farmer
J590		Pulling, Geo	n hf s hf 15	3	M F and O	1	Farmer
602		Pincombe, Richard	w hf 20 and pt 19	3	M F and O	1	Farmer
621		Pannell, Chester	s pt 22	3	M F and O	1	Farmer
J686		Parker, Isaac	e hf 15	4	M F and O	1	Farmer
687		Parker, James	s qr 15	3	M F and O	1	Farmer
J688		Parker, George	w hf 16	4	M F and O	1	Farmer
J682		Parker, G H	w hf 14	4	M F and O	2	Farmer
J691		Patterson, Thos	w hf 15	4	M F and O	1	Farmer
J692		Patterson, John	w hf 15	4	M F and O	1	Farmer
693		Patterson, Richard	w hf 15	4	M F and O	1	Farmer
J772		Parker, Robert	s w pt 16	5	M F and O	1	Farmer
J773		Parker, C N	e hf 16 and w hf 17	5	M F and O	1	Farmer
J455		Rankin, Jos W	e hf 25	1	M F and O	6	Farmer
J461		Rutherford, Alex	pt 31	1	M F and O	6	Farmer

Jur.	No. on Roll
J529	R
J685	R
J684	R
J757	R
J761	R
J762	F
771	F
J642	F
J451	S
J453	S
462	S
J516	S
575	S
576	S
577	S
1596	S
597	S
J626	S
770	S
J780	S
781	S
782	S
J430	S
441	S
J501	S
J533	S

Jur.	No. on Roll.	NAME.	LOT.	Concession or Street.	Other Description.	P.O.	Occupation.
J529		Robbins, Fred.....	s pt 28.....	2	.....	M F and O..	6..Farmer
J685		Rapley, David.....	e hf 14.....	4	.....	M F and O..	2..Farmer
J684		Rapley, Frederick..	e hf 14.....	4	.....	M F and O..	2..Farmer
J757		Rapley, Wm ...	e hf 12.....	5	.....	M F and O..	2..Farmer
J761		Reinhardt, Peter.	w pt 14,w hf e hf 14.	5	.....	M F and T..	2..Farmer
J762		Reinhardt, Peter M.	w pt 14,w hf e hf 14..	5	.....	M F and T..	..Farmer
771		Rowe, Trustram..	n w pt 16.....	5	.....	.....	.....
J642		Rumball, F G....	pt 26 and 25.....	3	.....	M F and O..	1..
J451		Shiple, L W ....	w hf 22 ..	1	.....	M F and O..	1..Farmer
J453		Slater, Thos....	e hf 23, pt 24.....	1	.....	M F and O..	1..Farmer
462		Skinner, Thos....	pt 31.....	1	.....	M F and O..	6..Farmer
J516		Slater, J C .....	w hf 24.....	2	.....	M F and O..	1..Farmer
575		Smith, Wm .....	e hf 13.....	3	.....	M F and O..	9..Farmer
576		Smith, Frank ...	e hf 13.....	3	.....	M F and O..	9..Farmer
577		Smith, John.....	e hf 13.....	3	.....	M F and O..	9..Farmer
J596		Seoon, Wm A ....	e hf 17.....	3	.....	M F and O..	1..Farmer
597		Seoon, J W .....	e hf 17.....	3	.....	M F and O..	1..Farmer
J626		Sickles, Henry....	pt 23.....	3	.....	M F and O..	1..Farmer
770		Shepherd, George..	e qr 15.....	5	.....	M F and O..	2..Farmer
J780		Shepherd, John....	pt 18.....	4 and 5	.....	M F and O..	1..Farmer
781		Shepherd, Frank ..	pt 18.....	4 and 5	.....	M F and O..	1..Farmer
782		Shepherd, Fred ..	pt 18.....	4 and 5	.....	M F and O..	1..Farmer
J430		Thompson, Geo jr..	e hf 16.....	1	.....	M F and O..	1..Farmer
441		Thompson, Geo sr .	19.....	1	.....	M F and O..	1..Farmer
J501		Thompson, John....	pt 20, pt 21.....	2	.....	M F and O..	1..Farmer
J533		Thompson, M M....	pt 29.....	2	.....	M F and O..	1..Farmer

Jur.	No. on Roll.	NAME.	LOT.	Concession or Street.	Other Description.	P.O.	Occupation.
J606		Traver, Elliott	on 21	3	M F and T.	1.	Barrister
J613		Thompson, Geo.	s pt 21	3	M F and O.	1.	Farmer
614		Thompson, Albert	s pt 21	3	M F and O.	1.	Farmer
615		Thompson, Seobie	s pt 21	3	M F and O.	1.	Farmer
616		Thompson, Andrew	s pt 21	3	M F and O.	1.	Farmer
J638		Thompson, W D.	24 and e qr 23	3 and 2	M F and O.	1.	Farmer
J639		Thompson, S R	24 and e qr 23	3 and 2	M F and O.	1.	Farmer
J640		Thompson, Grant	24 and e qr 23	3 and 2	M F and O.	1.	Farmer
J641		Thompson, Andrew	25	3	M F and O.	1.	Farmer
J681		Topping, Gilbert	e hf 13	4	M F and O.	1.	Farmer
J707		Thomas, Henry	cen pt 18	4	M F and O.	1.	Farmer
J708		Thomas, E H	cen pt 18	4	M F and O.	1.	Farmer
H.J.M. J787		Thompson, G H	on 19	5	<del>M F and O.</del>	1	Farmer
J788		Thompson, J S	on 19	5	M F and O.	1.	Farmer
J617		Vokes, J T	on 21	3	M F and O.	1.	Farmer
J618		Vokes, R E	on 21	3	M F and O.	1.	Printer
J506		Woolley, Warren	fn pt 21	2	M F and O.	1.	Farmer
			cen pt 22	2	M F and T.	1.	Farmer
J586		Watson, John	s qr 15	3	M F and O.	9.	Farmer
J628		Walters, John	ou 23	3	M F and O.	1.	Farmer
J629		Walters, David	on 23	3	M F and O.	1.	Farmer
J705		Ward, Donald	w hf 18	4	M F and O.	1.	Farmer
J706		Ward, T D	w hf 18	4	M F and O.	1.	Farmer
J774		Ward, George	e hf 17 and pt 18	5	M F and O.	1.	Farmer
J779		Wilson, John	pt 18	5	M F and O.	1.	Farmer
J785		Weeks, Christopher	s hf e hf 18	5	M F and T.	1.	Farmer

Jur. N  
J798

J799

J800

J801

J802

44

61

76

52

51

50

67

69

69

58

60

71

71

68

Jur.	No. on Roll.	NAME.	LOT.	Concession or Street.	Other Description.	P.O.	Occupation.
	J798	Welch, Thos	hf e hf 18	5	M F and O.	1.	Farmer
	J799	Welch, T B	hf e hf 18	5	M F and O.	1.	Farmer
	J800	Welch, John	hf e hf 18	5	M F and O.	1.	Farmer
	J801	Welch, Alex	hf e hf 18	5	M F and O.	1.	Farmer

**PART II.—Persons Entitled to Vote at Municipal Elections ONLY.**

	446	Anderson, Henry	w hf 20	1	Owner	1.	
	612	Crouse, Ada	pt 21	3	Owner	1.	
	763	Currie, Mrs Jane	e qr 14, w qr 15	5	Owner	1.	
	523	Douglas, Thos	20 and pt 21	3	Owner	1.	
	512	Douglas, Mrs V	e hf 22	2	Owner	1.	
	<del>594</del>	<del>Dall, Robert</del>	<del>on 22</del>	<del>2</del>	<del>Owner</del>	<del>1</del>	
	679	Downer, Mrs Lucy	w hf 13	4	Owner	2.	
	696	Downer, J W	n hf 12	3	Owner	Petrolia	
	698	Dubois, Mrs S	e hf 16	4	Owner	1.	
	583	Elworthy, John	pt 31	1	Owner	London	
	609	Hanley, Cunn	pt 21	3	Owner	London	
	714	Healey, James	lot 5, pt 19	1 n, 4 s	Owner	1.	
	715	Healey, A E	lot 5, pt 19	1 n, 4 s	Owner	1.	
	697	Laughead, M D	e hf 13	4	Owner	Petrolia	



## Polling Sub-Division No. 4.

Jur.	No. on Roll.	NAME.	LOT.	Concession or Street.	Other Description.	P.O.	Occupation.
	448	McKenzie, Mrs E. n e ½ 21	1		Owner		1..
	494	Miner, Wm w hf 16	2		Owner		
	487	Morrow, Edwin e hf 17	2		Owner		1.
	488	Morrow, Chas e hf 17	2		Owner		
	489	Morrow, F G e hf 17	2		Owner		
	605	McLean, Mrs S on 21	3		Owner		1..
	680	Murby, Wm pt e hf 12	4		Owner		Toronto
	525	Mullholland, L W on 22 <i>in October on</i>	2		Owner		Toronto
	610	Nicholson, Henry 21	3		Owner		1.. Agent
	620	Pannell, Mrs M on 22	3		Owner		1..
	495	Paine, Thos e hf 18	2		Owner		1..
	690	Patterson, Mrs Jane w hf 15	4		Owner		2 .
	522	Rowland, E e hf 19	2		Owner		1..
	530	Robbins, Mrs H s pt 28	2		Owner		1..
		Ross, Hugh on 23	3		Owner		Parkhill
	769	Reinhardt, J A pt i4 and pt 13	4 and 5		Owner		
	447	Thompson, Dr Alex e hf 20	1		Owner		1..
	783	Thompson, Mrs Lena pt 18	4 and 5		Owner		1..

H. J. M.

**PART III.—Persons Entitled to Vote at Elections to the Legislative Assembly ONLY.**

Jur.	No. on Roll.	NAME.	LOT.	Concession or Street.	Other Description.	P.O.	Occupation.
	780	Currie, John	15	5	M F	2	..
	503	Smith, Ed.	21	2	M F	1	..

*H. J. M.*      *Hodgins J. R.*      4      M F      *W*

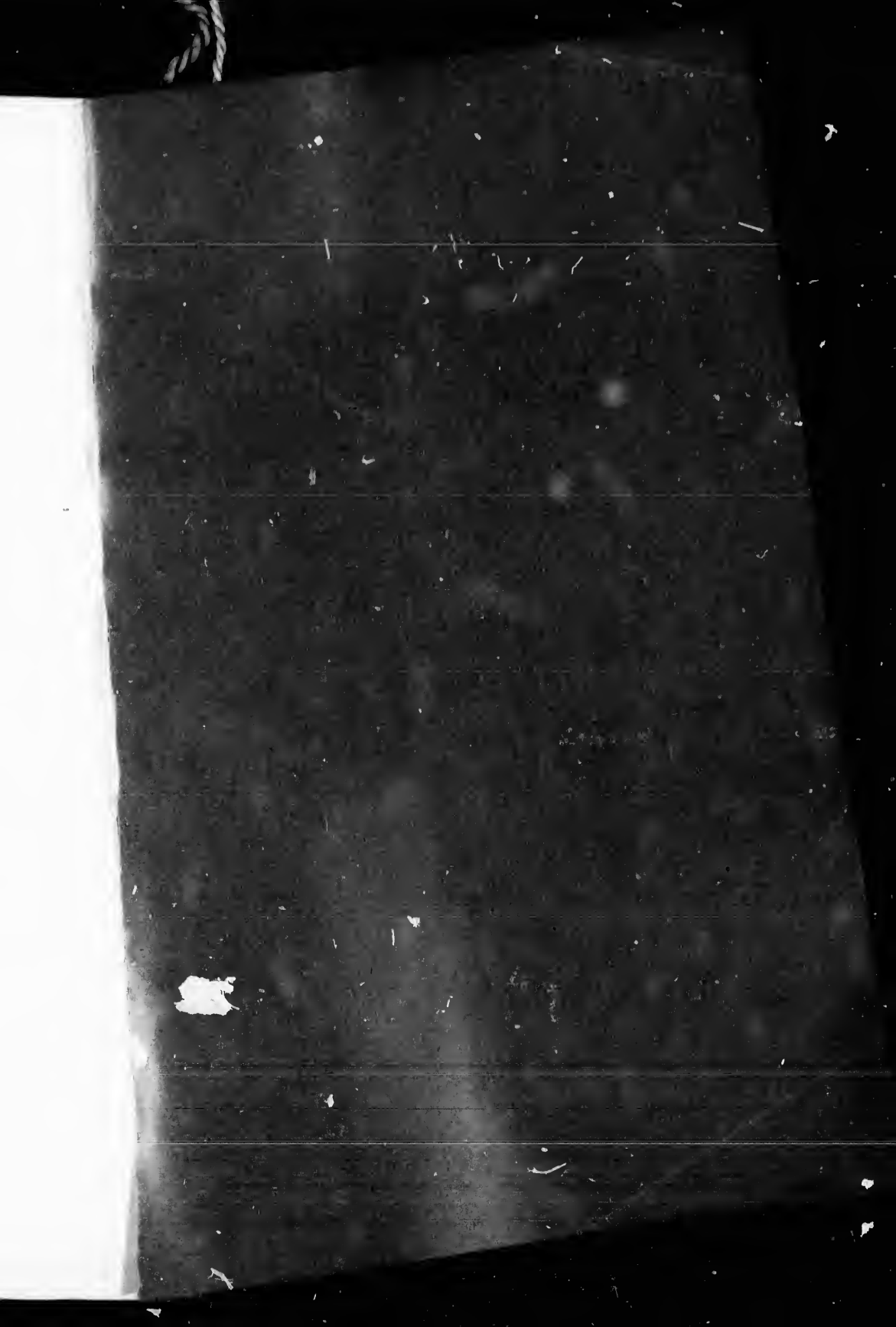
300 of the within named voters are qualified to serve on Juries.

I, H. J. MILLER, Clerk of the Municipality of the Township of Adelaide, in the County of Middlesex, do hereby certify that parts one and three of the within list constitute a correct list for the year 1898, of all persons appearing by the last revised Assessment Roll of the said Municipality to be entitled to vote at elections for members of the Legislative Assembly; and that parts one and two constitute a correct list for said year of all persons appearing by the said Roll to be entitled to vote at Municipal Elections in said Municipality, and I hereby call upon all electors to examine the said list, and if any omissions or other errors are perceived therein, to take immediate proceedings to have the said errors corrected according to law.

Dated the 10th day of August, 1898.

H. J. MILLER,  
Clerk of the Township of Adelaide,  
Adelaide P. O.





---

EXTRACT FROM THE TOWN'S RECORDS, 1848.

---

The Town's Clerk, immediately upon the receipt of the order, shall cause the same to be posted in his respective office in the Court House; the Clerk of the Court, upon the receipt of the order, shall cause the same to be posted in a conspicuous place in his office; every Justice of the Peace before whom an appeal is taken shall be five minutes past, upon the day of his or her trial in the Court of the District Court, and every Justice of the Peace shall post up two of the copies in his or her office. — Sec. 8.

---

