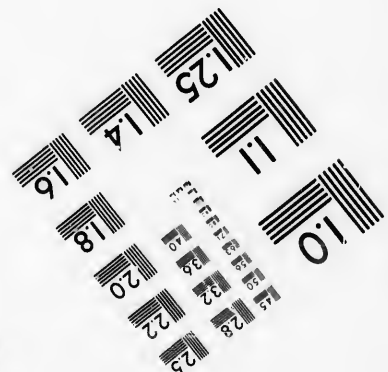
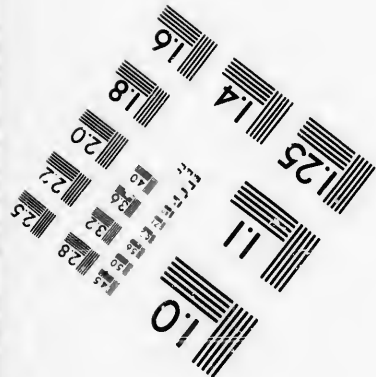
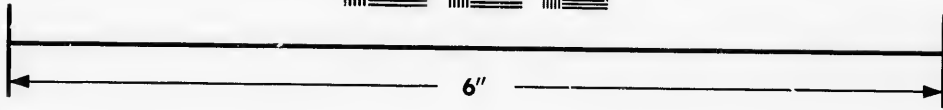
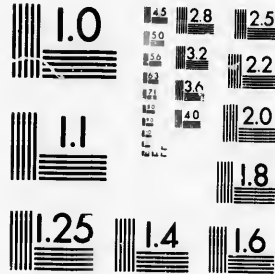


**IMAGE EVALUATION
TEST TARGET (MT-3)**



**Photographic
Sciences
Corporation**

23 WEST MAIN STREET
WEBSTER, N.Y. 14580
(716) 872-4503



**CIHM/ICMH
Microfiche
Series.**

**CIHM/ICMH
Collection de
microfiches.**



Canadian Institute for Historical Microreproductions / Institut canadien de microreproductions historiques



© 1986

Technical and Bibliographic Notes/Notes techniques et bibliographiques

The Institute has attempted to obtain the best original copy available for filming. Features of this copy which may be bibliographically unique, which may alter any of the images in the reproduction, or which may significantly change the usual method of filming, are checked below.

L'Institut a microfilmé le meilleur exemplaire qu'il lui a été possible de se procurer. Les détails de cet exemplaire qui sont peut-être uniques du point de vue bibliographique, qui peuvent modifier une image reproduite, ou qui peuvent exiger une modification dans la méthode normale de filmage sont indiqués ci-dessous.

- | | |
|--|--|
| <input type="checkbox"/> Coloured covers/
Couverture de couleur | <input type="checkbox"/> Coloured pages/
Pages de couleur |
| <input type="checkbox"/> Covers damaged/
Couverture endommagée | <input type="checkbox"/> Pages damaged/
Pages endommagées |
| <input type="checkbox"/> Covers restored and/or laminated/
Couverture restaurée et/ou pelliculée | <input type="checkbox"/> Pages restored and/or laminated/
Pages restaurées et/ou pelliculées |
| <input type="checkbox"/> Cover title missing/
Le titre de couverture manque | <input checked="" type="checkbox"/> Pages discoloured, stained or foxed/
Pages décolorées, tachetées ou piquées |
| <input type="checkbox"/> Coloured maps/
Cartes géographiques en couleur | <input type="checkbox"/> Pages detached/
Pages détachées |
| <input type="checkbox"/> Coloured ink (i.e. other than blue or black)/
Encre de couleur (i.e. autre que bleue ou noire) | <input checked="" type="checkbox"/> Showthrough/
Transparence |
| <input type="checkbox"/> Coloured plates and/or illustrations/
Planches et/ou illustrations en couleur | <input type="checkbox"/> Quality of print varies/
Qualité inégale de l'impression |
| <input type="checkbox"/> Bound with other material/
Relié avec d'autres documents | <input type="checkbox"/> Includes supplementary material/
Comprend du matériel supplémentaire |
| <input type="checkbox"/> Tight binding may cause shadows or distortion
along interior margin/
La reliure serrée peut causer de l'ombre ou de la
distorsion le long de la marge intérieure | <input type="checkbox"/> Only edition available/
Seule édition disponible |
| <input type="checkbox"/> Blank leaves added during restoration may
appear within the text. Whenever possible, these
have been omitted from filming/
Il se peut que certaines pages blanches ajoutées
lors d'une restauration apparaissent dans le texte,
mais, lorsque cela était possible, ces pages n'ont
pas été filmées. | <input type="checkbox"/> Pages wholly or partially obscured by errata
slips, tissues, etc., have been refilmed to
ensure the best possible image/
Les pages totalement ou partiellement
obscurcies par un feuillet d'errata, une pelure,
etc., ont été filmées à nouveau de façon à
obtenir la meilleure image possible. |
| <input checked="" type="checkbox"/> Additional comments: / [Printed ephemera] [4] p.
Commentaires supplémentaires: | |

This item is filmed at the reduction ratio checked below/
Ce document est filmé au taux de réduction indiqué ci-dessous.

10X	14X	18X	22X	26X	30X
<input type="checkbox"/>	<input type="checkbox"/>	<input type="checkbox"/>	<input type="checkbox"/>	<input checked="" type="checkbox"/>	<input type="checkbox"/>
12X	16X	20X	24X	28X	32X

The copy filmed here has been reproduced thanks to the generosity of:

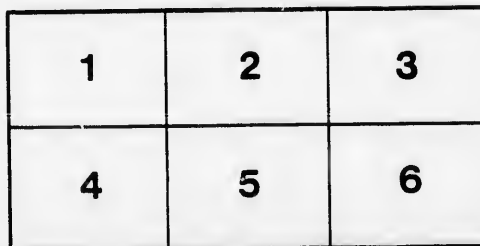
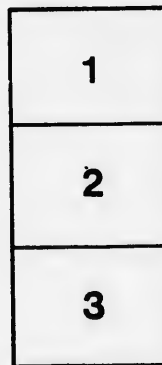
D. B. Weldon Library
University of Western Ontario
(Regional History Room)

The images appearing here are the best quality possible considering the condition and legibility of the original copy and in keeping with the filming contract specifications.

Original copies in printed paper covers are filmed beginning with the front cover and ending on the last page with a printed or illustrated impression, or the back cover when appropriate. All other original copies are filmed beginning on the first page with a printed or illustrated impression, and ending on the last page with a printed or illustrated impression.

The last recorded frame on each microfiche shall contain the symbol \rightarrow (meaning "CONTINUED"), or the symbol ∇ (meaning "END"), whichever applies.

Maps, plates, charts, etc., may be filmed at different reduction ratios. Those too large to be entirely included in one exposure are filmed beginning in the upper left hand corner, left to right and top to bottom, as many frames as required. The following diagrams illustrate the method:



L'exemplaire filmé fut reproduit grâce à la générosité de:

D. B. Weldon Library
University of Western Ontario
(Regional History Room)

Les images suivantes ont été reproduites avec le plus grand soin, compte tenu de la condition et de la netteté de l'exemplaire filmé, et en conformité avec les conditions du contrat de filmage.

Les exemplaires originaux dont la couverture en papier est imprimée sont filmés en commençant par le premier plat et en terminant soit par la dernière page qui comporte une empreinte d'impression ou d'illustration, soit par le second plat, selon le cas. Tous les autres exemplaires originaux sont filmés en commençant par la première page qui comporte une empreinte d'impression ou d'illustration et en terminant par la dernière page qui comporte une telle empreinte.

Un des symboles suivants apparaîtra sur la dernière image de chaque microfiche, selon le cas: le symbole \rightarrow signifie "A SUIVRE", le symbole ∇ signifie "FIN".

Les cartes, planches, tableaux, etc., peuvent être filmés à des taux de réduction différents. Lorsque le document est trop grand pour être reproduit en un seul cliché, il est filmé à partir de l'angle supérieur gauche, de gauche à droite, et de haut en bas, en prenant le nombre d'images nécessaire. Les diagrammes suivants illustrent la méthode.

GRAND OPERA HOUSE

C. J. WHITNEY

LESSEE

A. E. ROOTE

MANAGER

PROGRAMME

LONDON

ONT.



PLEASANT REFLECTIONS...

There are pleasant reflections in our big mirror when a customer who is buying our kind of made-to-measure clothing for the first time discovers that his new suit fits at the first trying on. That makes him smile. Try us and smile.

DEEKS & CO.

393 RICHMOND STREET

OFFICE RESTAURANT

D. SARE, Proprietor

Best Wines, Liquors and Cigars

always on hand. Full course Dinner from 12 to 2.

HOT MEALS per order, at all hours.

OYSTERS, in any style, every day of the year.

We appreciate your patronage, and always do what's right.

BREAD

IS THE STAFF OF LIFE

Too much care cannot be given to the selection of PURE, WHOLESOME and CLEANLY MADE BREAD.

"EUREKA" Bread needs only a trial to convince you. Manufactured by

PARNELL-DEAN STEAM BAKING CO. LIMITED

Telephone 929. 75 BRUCE ST.

BETWEEN THE ACTS CALL AT THE **RICHMOND HOTEL**

N. E. Cor. Richmond and King Sts.

FRESH LAGER, WINES, LIQUORS and CIGARS

H. L. PEINE, New Proprietor

SEASON 1898-9



SATURDAY, OCTOBER 8th, 1898

MATINEE AND NIGHT.



Lincoln J. Carter's
Great Naval Drama

UNDER

THE

DOME

R. McMILLAN, Manager.

MASON & RISCH

PIANOS

The Instruments . . .
. . . of the Cultured

WE ARE OFFERING SPECIAL BARGAINS AT PRESENT, AND SOLICIT A CALL AT OUR

WAREROOMS

213 DUNDAS STREET

C. H. TESKEY
MANAGER
LONDON BRANCH

SMITH BROS.

STEAM, GAS and
HOT WATER
FITTERS

PLUMBERS

265 Dundas Street
Telephone 538

LONDON

THIS PROGRAMME

IS FROM THE PRESS OF

Deal & Fleming

172 KING STREET

WE SOLICIT YOUR PATRONAGE



TELEPHONE 874

THE LONDON FLORAL CO'Y

... DEALERS IN ...

All Kinds of

CUT FLOWERS

And Decorative Plants.

Theatre Parties
a Specialty. 249 Dundas Street.

PHONE 493.

SMOKE THE ONLY HONEST VIRGINIA 5c CIGAR SOLD
H. McKENNA, 225 DUNDAS STREET.



You
Contemplate
Wedding



WHY not have the latest ideas? In catering we can save you trouble and expense. Are you giving a Bicycle Party, an At Home or Social? We offer inducements that are irresistible. Our Soda Water and Jersey Ice Cream has no equal. Our candies and Confectionery made fresh daily. If you wish dressed fowl or meats of any variety, leave your order with us, we can supply you on shortest notice. Oysters served in every style. Lunch rooms open till 12 p.m.

SPECIALTIES: Salads and Puddings, Hot and Cold Lunches.
SENT TO ANY PART OF THE CITY.

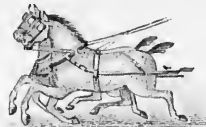
SHORT BROS.

Phone 491 220 Dundas Street

Stroyan's Mammoth Livery

BOARDING AND SALE STABLES

Phone No. 503



Open Day and Night

HACKS, COUPES AND LIGHT LIVERY
A. G. STROYAN, Proprietor

CALL THE USHER WHEN IN WANT OF CAB OR COUPE

Full Line of... LONDON VIEWS

...SOUVENIRS...

Useful Wedding and Birthday Presents

Yeo's China Hall

177 DUNDAS STREET

China and Glass Goods for all household purposes.
You are invited to call and inspect our new fall stock of Fancy China.



CAST OF CHARACTERS.

Ned Langmuir, who sails before the mast as Ned Notman.....H. M. Scott
Seth Baldwin, his cousin, born without a conscience.....Chas. J. Harris
Howard Considine, Baldwin's attorney, afterwards consul to Samoa.....G. W. Kerr
Baron von Bibber, attache to German Consulate, Samoa.....Wilbur M. Roe
Bud Wilson, Considine's junior partner.....Chas. A. Sellon
Dave Bowers, boss of U. S. flagship "Trenton".....T. J. Langdon
Diek Hafton, a detective.....L. O'Bailey
Rev. B. Z. Body, a foreign missionary.....D. H. Wilson
Lient. Norris, U. S. N.....W. H. Hurry
Ensign Forbes.....G. O. Gordon
Dr. Gannon, resident of Apia, Samoan Islands.....E. R. Price
Officer Bowers.....Grover Alberts
Nora Considine, daughter of Howard.....Pearl Seward
Carrie Cummings, a poor relation.....Blanche Shirloy
Sailors, Detectives, etc.



PHONE 807

J. ELLIOTT HOLMES, L.D.S.

Dentist.

OFFICE: ROOM 3, DUFFIELD BLOCK,
Cor. Dundas and Clarence Sts. LONDON.

NOTICE

The limited space unrented in this Programme may be applied for at the Box Office. You read this, so would your advertisement be read. Keep yourself and business before the public. Theatre patrons are good customers for most business men.

Cannot Be Done

AT HOME FOR THE MONEY

Table Covers, Napkins, Sheets
Pillow Slips, Towels, Rollers

50 OF THE ABOVE PIECES
LAUNDERED FOR 50 CENTS

Work called for and delivered to any part of the city free.

PHONE 559

Parisian Steam Laundry Co.
LIMITED

FAIRBAIRN

Opposite City Hall
UP-STAIRS

The Tailor

If you have your own cloth, bring it to me and I will make it up in the best possible style at a reasonable cost.

Fall Suits and Overcoats

Prices sure to suit you as well as fit.
A CALL SOLICITED.

FAIRBAIRN, The Tailor

Opposite City Hall Richmond Street.

"Tis almost second nature for an actor to relate stories, even of a funeral nature, in as entertaining a manner as possible.

Mr. Goodwin is accredited with talking about it the other day.

"For instance," said he, "what's the use of going into all the harrowing details. Leave something to the imagination. Now, take for example, suppose you read something like this in the paper:

"In Boston the other day, a man thought he could cross the track in advance of a locomotive. The services at the grave were very impressive." Or

"A man in Maryland ate fifty raw oysters on a wager. The silver trimmings on his collar cost \$12.50." Or

"A Chicago man warned his wife not to light the fire with kerosene. She did not heed the warning. Her clothes fit his second wife admirably well." Or

"A Londoner got tired of buying his coal hazardous, because it was cheap, and now buys it from Cameron. As a result the doctor never calls, and he and his family are happy all the time." 'Tis brief, but really all-sufficient. Office, Hiscox Building, Yard, Burwell Street, at G. T. R.

THE TECUMSEH

LONDON, ONT.



FIRST-CLASS"
IN ALL
APPOINTMENTS.

SPECIAL RATES
FOR COMPANIES

CHAS. W. DAVIS,
Proprietor

DAYTON & McCORMICK NEW PALACEDancing Academy

422 RICHMOND STREET
(Over Canadian Loan, and Savings Bank)

Next week—Beginners' Classes, Gentlemen, Monday evening; Ladies, Tuesday evening, 8 o'clock sharp.
The recognized leading academy of Western Canada.

ELECTRIC LIGHTS, ELECTRIC FANS
AND EVERYTHING NEW AND UP-TO-DATE.

Academy open every evening for application of pupils.
Call early, as classes will be limited to number.

DAYTON & McCORMICK

LONDON STEAM LAUNDRY

284 Dundas Street

FIRST-CLASS WORK MODERATE RATES

Family Washing ^{ROUGH DRIED} 5c per lb.

Theatrical Troupes

PROMPTLY WAITED UPON

Prompt work. Satisfaction guaranteed.

TELEPHONE 1266

OUR WAGON WILL CALL

G. M. RYCKMAN, Proprietor

F. H. BUTLER Stock Broker

STOCKS, GRAINS AND PROVISIONS
bought and sold for cash or on margin.
Private wires to New York Stock Exchange and Chicago Board of Trade. Toronto and Montreal Stock Exchange quotations received by wire.

LONG DISTANCE TELEPHONE 1278

15-16 Masonic Temple, London

GOING ...THE...
ADVERTISER
SIGNS, BANNERS
and WALL WORK 578
RICHMOND ST.

E. J. PEARCE

Successor to E. J. BURKE

521 RICHMOND STREET

FULL LINE

Amateur
Supplies

ALWAYS
IN STOCK



SYNOPSIS

ACT I—Scene 1—Considine's house, Washington, D. C.
Scene 2—Hallway of same house. Scene 3—The United States Capitol, foot of Pennsylvania Ave., Washington.

ACT II—Scene 1—Considine's office, Elizabeth, N. J.
Scene 2—Foredeck of Hoboken Ferry, going to New York.

ACT III—Scene 1—Exterior of American Consulate, Apia, Samoa. A correct view of the beautiful coral reef harbor before the storm. United States Consul's house on shore. The assembled war vessels fire an Admiral's salute in honor of the flagship "Trenton."

ACT IV—Scene 1—Interior of Consulate, showing the storm as seen from the windows. Scene 2—A view from the shore during the storm. Scene 3—The U. S. S. "Trenton" going to her doom.

The story here hinges on historic facts pertaining to the Samoan uprising and the possibility of stage effect has been pressed to their utmost limits to faithfully show that awful Samoan hurricane which swept the harbor of Apia, causing terrible loss of life, wrecking the American warships Vandalia, Nipsic, and Trenton, and the German ships Adler, Zha, and O-ga, and from which the British ship Calliope only escaped by performing the bravest and most daring maneuver on record in naval annals, and for which she was cheered by all hands on board the less fortunate Trenton.

ACT V—Same as scene 1, act 1, three months later.

FOR MR. CARTER.

Manager.....Mr. Martin Golden
Business Manager.....Mr. Harrie R. Pierce
Stage Manager.....Mr. G. W. Kerr
Master of Properties.....Mr. Hugh Sims
Carpenter.....Mr. E. K. Price

The Famous Bell Orchestral Piano

IS USED EXCLUSIVELY IN THIS THEATRE.



A Man Wants to See You
BETWEEN ACTS, AT



JERRY McDONALD'S

131 KING STREET

SHEA'S, THE PLACE FOR THE BEST!

SHEA is sole agent in London for the Old Mill brand of Scotch Whisky that won the highest awards at the Chicago Fair.

SHEA always has the best, and the best is Walker's 7 year-old Imperial. It's in wood and maturing to still riper flavor every day.

Have you ever tried the flavor of Shea's Holland Gin? Every fine quality that Holland Gin should have is there—\$1.00 a quart bottle.

A Fine Old Port—\$1.00 a gallon.
Order by mail, Rear door from market.

ED. SHEA MAKES A SPECIALTY OF
FAMILY SUPPLIES.

NO. 1 MASONIC TEMPLE.

ESTABLISHED 1880.



T. FOX

THE ORIGINAL PAWNBROKER

LEND'S MONEY

On DIAMONDS, WATCHES, JEWELRY and WEARING APPAREL, Etc. All business strictly private and confidential.

383 AND 385 CLARENCE ST.

P. S.—Always a lot of unredeemed Gold Watches, Diamond Rings, Guns, Revolvers, and Musical Goods on hand—For Sale cheap.

The Talk of London

Is the Cheapest Store on Earth!

COLE'S

THE NOTED SPOT FOR BIG BARGAINS

Have you been in Cole's to trade? if not are you not paying too much for your goods? When you want big snaps in **FIRST-CLASS NEW GOODS** go to

Gole's Cut-Rate Store

We do as we advertise; we deal in facts only. At any time you are not suited with your purchase kindly let us know and we will make it satisfactory to you. We want your trade and will do our best to keep it.

See Our Gent's Linen Collars,

Space will not allow us to quote more prices, but we invite you to come and see for yourselves. Thousands of snaps await you. Come with the crowds and save money by dealing at

COLE'S CUT-RATE STORE LONDON'S NOTED CHEAP STORE

WE GIVE TRADING STAMPS AND BICYCLES FREE.

SPECIAL NOTICE—Ladies, do not destroy this Programme. Mr. Cole invites you to bring it to his store and to receive in exchange for it (the programme), free of all charge, a souvenir THIMBLE. That's easy, isn't it?



Ladies' Hats, ALL NEW STYLES AT CUT PRICE.

Feathers, Birds, Etc.

AT REDUCED PRICES.

We sell cheap, come and see our prices.

Do not fail to see at once

500 GOOD PURSES All to be **CLEARED OUT**, at **10c Each**

Also come and see our job lot of

HAIR BRUSHES

TO BE SOLD FOR **10c EACH**

These Purses and Brushes are travelers' samples, and many of them are worth double the price we ask for them. Come at once and have your choice for 10c.

worth 20c, for 5c

NEXT ATTRACTION!

Monday, October 10th

Second Annual Engagement
—of—

JULIA & ARTHUR

Under the Management of
A. H. CANBY,

A Lady of Quality

By Francis Hodgson Burnett
and Stephen Townsend

The same magnificent production as made so great a sensation here last season.

Miss Arthur's supporting company is even stronger than that seen here last year, including Messrs. W. S. Hart, Scot Inglis, Robt. McWade, Joseph Allen, Horace Lewis, W. J. Thorold, William Herbert, Marcus Moriarity, Albert Browne, Herbert Fortier; Misses Florence Conron, Ethel Knight Mollison, Marie Bingham, and others—in all the most expensive and strongest dramatic company ever organized.

COMING!

—THE—

Big Boston Success!

CHAS. E. BLANEY'S
LATEST MUSICAL COMEDY

A Female

Drummer

“Wouldn't that jar you?”

The most extensive cast ever in farce comedy.

JOHNSTONE BENNETT

The original “Jane.”

George Richards Tony Williams Eugene Confield
Willie P. Sweatman Oscar Ferguson Nellie O'Neil
Payson Craume Chas. A. Burk

The Famous

IMPERIAL QUARTETTE

PEOPLE IN 50 TITE CAST.

Big Scenic Musical Extravaganza Production.

TUESDAY, OCTOBER 11th

MATINEE AND NIGHT.

A. Q. Scammon's Co.

IN THE GREAT LAUGH PROVOKING
SUCCESS,

'Side Tracked'

Illustrating the comic side of life
on the rail.

A Comedy with Thrilling Situations.

Startling Sensational Effects!

And Special Scenic Accessories!



Including a company of

Gleever Specialty Performers!

Presenting the latest catchy Music, Songs, Duets, Trios, Medleys, Dances and Extra features, creating fun fast and furious from start to finish.

MATINEE PRICES, 15c and 25c
NIGHT PRICES, 15c, 25c, 35c and 50c

