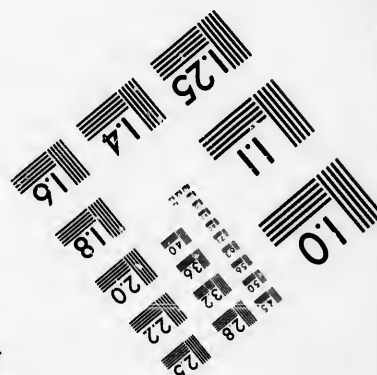
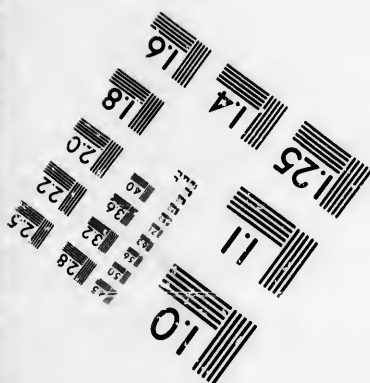
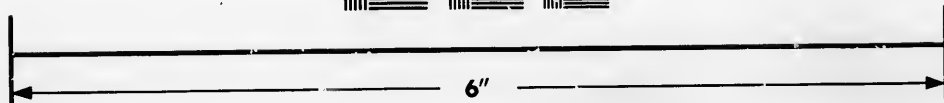
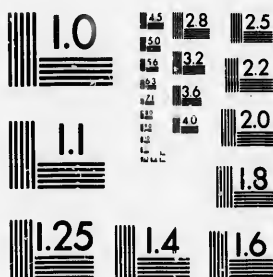


IMAGE EVALUATION TEST TARGET (MT-3)



Photographic
Sciences
Corporation

23 WEST MAIN STREET
WEBSTER, N.Y. 14580
(716) 872-4503

**CIHM/ICMH
Microfiche
Series.**

**CIHM/ICMH
Collection de
microfiches.**



Canadian Institute for Historical Microreproductions / Institut canadien de microreproductions historiques

© 1986

Technical and Bibliographic Notes/Notes techniques et bibliographiques

The Institute has attempted to obtain the best original copy available for filming. Features of this copy which may be bibliographically unique, which may alter any of the images in the reproduction, or which may significantly change the usual method of filming, are checked below.

- ☐ Coloured covers/
Couverture de couleur
- ☐ Covers damaged/
Couverture endommagée
- ☐ Covers restored and/or laminated/
Couverture restaurée et/ou pelliculée
- ☐ Cover title missing/
Le titre de couverture manque
- ☐ Coloured maps/
Cartes géographiques en couleur
- ☐ Coloured ink (i.e. other than blue or black)/
Encre de couleur (i.e. autre que bleue ou noire)
- ☐ Coloured plates and/or illustrations/
Planches et/ou illustrations en couleur
- ☐ Bound with other material/
Relié avec d'autres documents
- ☐ Tight binding may cause shadows or distortion along interior margin/
La reliure serrée peut causer de l'ombre ou de la distorsion le long de la marge intérieure
- ☐ Blank leaves added during restoration may appear within the text. Whenever possible, these have been omitted from filming/
Il se peut que certaines pages blanches ajoutées lors d'une restauration apparaissent dans le texte, mais, lorsque cela était possible, ces pages n'ont pas été filmées.
- ☐ Additional comments:/
Commentaires supplémentaires:

L'Institut a microfilmé le meilleur exemplaire qu'il lui a été possible de se procurer. Les détails de cet exemplaire qui sont peut-être uniques du point de vue bibliographique, qui peuvent modifier une image reproduite, ou qui peuvent exiger une modification dans la méthode normale de filmage sont indiqués ci-dessous.

- ☐ Coloured pages/
Pages de couleur
- ☐ Pages damaged/
Pages endommagées
- ☐ Pages restored and/or laminated/
Pages restaurées et/ou pelliculées
- ☒ Pages discoloured, stained or foxed/
Pages décolorées, tachetées ou piquées
- ☐ Pages detached/
Pages détachées
- ☒ Showthrough/
Transparence
- ☐ Quality of print varies/
Qualité inégale de l'impression
- ☐ Includes supplementary material/
Comprend du matériel supplémentaire
- ☐ Only edition available/
Seule édition disponible
- ☐ Pages wholly or partially obscured by errata slips, tissues, etc., have been refilmed to ensure the best possible image/
Les pages totalement ou partiellement obscurcies par un feuillet d'errata, une pelure, etc., ont été filmées à nouveau de façon à obtenir la meilleure image possible.

This item is filmed at the reduction ratio checked below/
Ce document est filmé au taux de réduction indiqué ci-dessous.

10X	14X	18X	22X	26X	30X
<input type="checkbox"/>	<input type="checkbox"/>	<input checked="" type="checkbox"/>	<input type="checkbox"/>	<input type="checkbox"/>	<input type="checkbox"/>
12X	16X	20X	24X	28X	32X

The copy filmed here has been reproduced thanks to the generosity of:

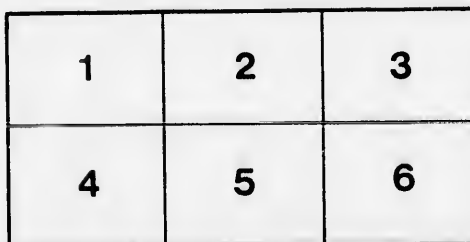
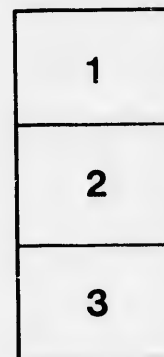
Seminary of Quebec
Library

The images appearing here are the best quality possible considering the condition and legibility of the original copy and in keeping with the filming contract specifications.

Original copies in printed paper covers are filmed beginning with the front cover and ending on the last page with a printed or illustrated impression, or the back cover when appropriate. All other original copies are filmed beginning on the first page with a printed or illustrated impression, and ending on the last page with a printed or illustrated impression.

The last recorded frame on each microfiche shall contain the symbol \rightarrow (meaning "CONTINUED"), or the symbol ∇ (meaning "END"), whichever applies.

Maps, plates, charts, etc., may be filmed at different reduction ratios. Those too large to be entirely included in one exposure are filmed beginning in the upper left hand corner, left to right and top to bottom, as many frames as required. The following diagrams illustrate the method:



L'exemplaire filmé fut reproduit grâce à la générosité de:

Séminaire de Québec
Bibliothèque

Les images suivantes ont été reproduites avec le plus grand soin, compte tenu de la condition et de la netteté de l'exemplaire filmé, et en conformité avec les conditions du contrat de filmage.

Les exemplaires originaux dont la couverture en papier est imprimée sont filmés en commençant par le premier plat et en terminant soit par la dernière page qui comporte une empreinte d'impression ou d'illustration, soit par le second plat, selon le cas. Tous les autres exemplaires originaux sont filmés en commençant par la première page qui comporte une empreinte d'impression ou d'illustration et en terminant par la dernière page qui comporte une telle empreinte.

Un des symboles suivants apparaîtra sur la dernière image de chaque microfiche, selon le cas: le symbole \rightarrow signifie "A SUIVRE", le symbole ∇ signifie "FIN".

Les cartes, planches, tableaux, etc., peuvent être filmés à des taux de réduction différents. Lorsque le document est trop grand pour être reproduit en un seul cliché, il est filmé à partir de l'angle supérieur gauche, de gauche à droite, et de haut en bas, en prenant le nombre d'images nécessaire. Les diagrammes suivants illustrent la méthode.

rrata
o

peure,
n à

206 agricult no 1

Agricultural and Industrial Exhibit

— OF THE —

PROVINCE OF QUEBEC, for 1873.

PRIZES OFFERED, \$15,000.

COMPETITION OPEN TO THE WORLD.

The Agricultural and Industrial Exhibition for 1873, to be held in the City of Montreal on the 16th, 17th, 18th and 19th, days of September, promises to be of unusual interest, not only to those immediately concerned in the exhibition of the best specimens of Stock and Agricultural and Industrial products, but also to the general public. Trade and Commerce are intimately allied with the Agricultural and Mechanical pursuits, and in fact upon these departments of industry rest the foundations of the former, and general progress and prosperity of the country. Here will be brought together the best breeds of stock, the finest products of the farm and garden, and the latest improvements in agricultural implements and machinery of all kinds. Here the farmer, mechanic and inventor, come in contact, compare notes, and thus gain valuable information for his guidance in the future, while those engaged in other pursuits can witness the splendid results of a friendly rivalry for the prizes offered.

The Councils of Agriculture and of Arts and Manufactures, have exerted themselves to make the occasion worthy of the Province, and it will, without doubt prove a great success.

Fine and commodious grounds have been selected, sheds and stalls for the protection of stock erected thereon, suitable buildings provided for the industrial departments, and every facility offered exhibitors for

BIBLIOTHEQUE

— DE —

M. L'ABBÉ VERREAU

No.

Classe

Division *Agriculture*

Série *1^{re} 11*

"Health, the Crowning Blessing of Life."



WINGATE'S

Standard English Remedies,

—THE—
PERFECTION of MEDICAL SCIENCE.

These valuable Remedies, which have stood the test of trial and become a household necessity, are the best that experience and careful research can produce for the cure of the various diseases for which they are especially designed.

They are not secret remedies, but are prepared with great perfection of skill from formulas which have received the highest recommendations from the most eminent Physicians and Surgeons in all parts of the world. In fact, they are just what is claimed for them—a class of *Standard Preparations*, for general use, possessing extraordinary curative powers in complaints for which they are recommended. As such, the sick and afflicted can at all times rely upon them with safety, and find relief from pain and suffering.

(See 4th Page.)

the
are
cour
the

A
rang
cula
Bui
T
belo

1st
2nd
3rd
4th
5th
6th
7th
8th
9th

1st

2nd
3rd

4th

5th

6th

the display of their productions. The prizes offered are large, and the list opened to competitors from other countries, thus showing a liberal spirit in keeping with the general progress of the age.

CLASSIFICATION.

All Animals and articles for Exhibition will be arranged in classes, and each assigned to its own particular section on the grounds, or in the Exhibition Buildings.

The following table will show to which class each belongs.

AGRICULTURAL DEPARTMENT.

- 1st Class—Horses.....
- 2nd Class—Cattle.....
- 3rd Class—Sheep.....
- 4th Class—Swine.....
- 5th Class—Poultry.....
- 6th Class—Agricultural Productions, Grain, Seed, &c..
- 7th Class—Roots and other Field Crops.....
- 8th Class—Dairy Products, &c.....
- 9th Class—Agricultural Implements.....

INDUSTRIAL DEPARTMENT.

- 1st Class—Cabinet and other Wood Work, Manufactures of Hair, Surgical Appliances, Musical Instruments, &c.....
- 2nd Class—Carriages and Sleighs and parts thereof, &c.
- 3rd Class—Machinery, Castings, Manufactures of Metal, Tools and Fittings &c.....
- 4th Class—Building Materials. Pottery. Tiles, Slates and Slate Manufactures, Buttons, Glassware, &c.
- 5th Class—Architectural and Mechanical Drawings, Decorative Painting, Japanning, Sculpture, Statuary, Engraving, Lithography, Photography, Pencils, Crayons, Materials used in the Fine Arts, &c.
- 6th Class—Paper, Printing, Book-binding, Manufactures of Paper, &c.....

WINGATE'S CATHARTIC PILLS.

The best purgative Medicine known for all derangements of the Stomach, Liver and Bowels.

These Pills are mild, yet certain and speedy in operation; do not weaken the system like ordinary purgatives, and are admirably calculated to meet a great variety of diseases which begin in derangements of the digestive organs. Being entirely free from Calomel or other deliterious substances, they are harmless in effect, yet sufficiently powerful to remove all obstructions and unhealthy secretions, and cut short the progress of disease.

PRICE, 25 CTS. PER BOX.

— : 0 : —

WINGATE'S NERVO-TONIC PILLS.

For Neuralgia, Epilepsy or Fits, St. Vitus's Dance, Paralysis, Softening of the Brain, Lapse of Memory, Impotency, and all Nervous affections.

Experience has proved beyond a doubt that these Pills have a powerful tonic and invigorating effect, and produce the most gratifying results in all forms of nervous prostration and debility. Whenever there is a waste of vitality and exhaustion of the natural powers, there can be no better remedy for toning up the nervous system and restoring to their normal action organs whose functions have become impaired and deranged.

PRICE, \$1.00 PER BOTTLE.

— : 0 : —

WINGATE'S CHALYBEATE PILLS.

Designed especially for Female use in all cases of Functional Derangements, Irregularities, Weakness and other Complaints peculiar to the sex.

No remedy of modern times has met with more success or can be relied upon with greater certainty of relief in all Female Complaints. They restore to the blood its vitalizing agent, iron; regulate the various functions when deranged, and give tone and vigor to the whole system. Ladies who are experiencing the change incident to advanced years, will find them of inestimable value in strengthening and fortifying the constitution at this critical period of life.

PRICE, \$1.00 PER BOTTLE.

- 7th Class—Leather, Manufactures of Leather, Rubber Goods, &c.....
- 8th Class—Oils, Varnish, Chemical Manufactures and Preparations, &c.....
- 9th Class—Canadian Economic Geology and Natural History.....
- 10th Class—Soap, Groceries, Provisions, Tobacco, Crackers, &c.....
- 11th Class—Woollen, Flax and Cotton Goods, Fishing Tackle, Furs, Wearing Apparel, &c.....
- 12th Class—Ladies' Department.....
- 13th Class—Domestic Manufactures.....

In addition to the stated premiums offered for articles enumerated in the list, the judges will have the power to recommend special premiums for such articles not enumerated, as they may consider worthy, and the Committee will determine the amount of such premiums.

In classes where there is but one competitor, or if the stock or articles exhibited be of inferior quality, the judges will exercise their discretion as to whether they will award the first, second, or any premium.

HOW TO REACH THE EXHIBITION GROUNDS.

The Exhibition will be held on the grounds, Mount Royal Avenue, near the head of St. Lawrence Main Street. The cars of the City Passenger Railway Company, run from Craig street up St. Lawrence Main, to within a short distance of the Exhibition Grounds, fare 5 cents. Visitors at the Hotels can be supplied with Carriages on application at the office.

ADMISSION TO THE GROUNDS.

Tickets of admission to those who are not exhibitors will be issued on Tuesday at 50 cents each, and on Wednesday, Thursday and Friday, at 25 cents. Children under 14 years of age, half-price.

Each exhibitor, on paying his entry will be furnished with four admission tickets, each of which will ad-

WINGATE'S DYSPEPSIA TABLETS.

For the cure of Dyspepsia, Indigestion, Flatulency, Irritability of the Stomach, Loss of Appetite, and Debility of the Digestive Organs.

These Tablets contain an active digestive principle of the gastric juice, together with other valuable agents, combined with sugar and gums, being in this form readily soluble in the stomach, and far more palatable and efficient than the ordinary remedies. In effect they are laxative, tonic and invigorating, and if taken after eating, act as a powerful aid to digestion, prevent the distress that often occurs, regulate the secretions, and give a healthy action to the Digestive Organs.

PRICE, 50 CTS. PER BOX.

WINGATE'S PULMONIC TROCHES.

An excellent Remedy for Coughs, Colds, Hoarseness, Bronchitis, Asthma, and all Irritation of the Throat and Lungs.

A trial of many years has proved the great value and efficacy of these Troches in all Pulmonary complaints, and if used in the earlier stages, they will prevent the more serious effects that often follow neglect. Public speakers and singers will find them very effective in giving power and clearness to the voice, and persons subject to a habitual cough, or to spasmodic fits of coughing after retiring at night, will be speedily relieved by their use.

PRICE, 25 CTS. PER BOX.

WINGATE'S WORM LOZENGES.

A Safe, Certain and Pleasant Remedy for Worms, that will not injure the most delicate child.

Being entirely free from all unpleasant taste or odor, these Lozenges are easily administered, and in every case produce the best possible results, eradicating every trace of worms if they exist. They do not, like other remedies prescribed, require to be followed by nauseous doses of physic, being sufficiently laxative in their action to remove all unhealthy secretions, and regulate the action of the bowels.

PRICE, 25 CTS. PER BOX.

mit the holder once, and must be given up at the gate on passing into the Grounds

The entry tickets upon animals or articles will admit the person bringing them to the Grounds for exhibition, along with such animals or articles, without the use of any other ticket.

Upon application to the Secretary, necessary attendants upon stock and articles belonging to the exhibitors, will be furnished with admission tickets, which will be good at the Exhibitors gate only.

STEAMBOATS AND RAILROADS.

Arrangements will be made with steamboat and railroad proprietors for carrying articles and passengers at reduced rates.

Arrangements will also be made with the Customs Department for the free entry of articles for competition.

SALE OF STOCK AND OTHER ARTICLES.

To facilitate the sale of stock or other articles, a register book will be kept at the office of the Secretary for the entry of such stock or article as parties may wish to dispose of, and all information relative to the same will be furnished at the Secretary's office. No articles or stock exhibited will be allowed to be removed from the grounds until the close of the Exhibition, Friday noon.

CATALOGUES, PRIZE LISTS, &c.

Catalogues of all animals and other articles on Exhibition, with prize lists, &c., and all information relative to the same may be obtained on application at the Secretary's Office, 63 St. Gabriel Street, Montreal.

Programme for the Week.

1. MONDAY, Sept. 15th, will be devoted to the final receiving of articles for exhibition, and their proper

COAL & WOOD STOVES FOR 1873.

The "IRON BLOCK," for Coal and Wood is the best
Cooking Stove in the Market.

The "AFRICAN" is a first class Stove for Coal and
Wood.

The "SEMICOLON" is the best cheap Coal and Wood
for the Working Classes.

The "ARMSTRONG" for wood.

The "TORONTONIAN" for Wood.

AGENT FOR THE

ONLY AMERICAN "ORIGINAL" BASE BURNER *in the Market.*

All Stoves guaranteed to give satisfaction. To be had at

WALTER W. SARGENT'S,
No. 594 CRAIG STREET, 594,
MONTREAL.

E. WETHAY,
HAIR DRESSER & PERFUMER,

DEALER IN

COMBS, BRUSHES, TOILET SOAPS, &c.

Choice Havana Cigars, Fine Virginia Tobaccos.

A choice variety of MEERSCHAUM PIPES.

No. 243 ST. JAMES STREET,

Immediately opposite the Ottawa Hotel,

MONTREAL.

arrangement. None but Members of the Councils, officers, judges, exhibitors, and necessary attendants will be admitted.

2. TUESDAY, Sept. 16.—The Judges in all classes will meet in the Committee Rooms at 10 o'clock, a.m. to commence their duties as soon as possible afterwards. As soon as they have made their awards they will report to the Secretary, who will provide them with the prize tickets to be attached to the articles in the sections judged by them. Admission at noon for non-exhibitors at 50 cents.

3. WEDNESDAY, September 17th.—The judges of the various classes will complete their awards as early in the day as possible. Admission 25 cents.

4. THURSDAY, September 18th.—Admission tickets 25 cents.

5. FRIDAY, September 19th.—Admission same as preceding day, until noon, when the Exhibition will close.

6. Arrangements will be made for the daily exhibition in the ring of horses and cattle.

7. SATURDAY, September 20th.—The Treasurer will commence paying the premiums at 9 a.m. Exhibitors will remove all their property from the grounds and buildings. The gates will be kept closed as long as necessary, and none will be admitted except those who can show that they have business to attend to.

Places of Interest in and about Montreal.

The City of Montreal is the largest and most populous in the Dominion of Canada, and being at the head of Ship Navigation, its local advantages are unsurpassed. It contains some two hundred streets, with a population of about 150,000, and its limits are still being rapidly extended. We will not undertake to enumerate all the places of interest in and about the City, but will mention a few, which the visitor will do well to inspect.

W. B. MCGOWAN, L. D. S.,

Dentist,

(Successor to the late Dr. C. W. WEBB,)

142 St. Lawrence Main Street,

MONTREAL.

Having had an extensive practice in the United States for the past twenty years, he feels confident of giving every satisfaction to all who may favor him with their patronage. All Dental operations performed in the latest style, and in the most thorough and scientific manner known in the Dental art.

PRICES REASONABLE.

The following references kindly permitted:

N. A. Smith, M. D., Montreal.

H. R. Gray, Chemist, 144 St. Lawrence Street.

Dr. J. S. Brigham, M. P., Phillipsburgh,

O. S. Browne, Esq., Ottawa Hotel.

H. Edson, Esq., 285 St. Bonaventure Street.

Geo. W. Stephens, Esq., Councillor.

J. Decker, Esq., Albion Hotel.

The Victoria Bridge—The cost of this gigantic structure was originally estimated at £1,450,000, but this sum has since been reduced, and the present calculation of its cost is about £1,250,000. In its erection 250,000 tons of stone, and 7,500 tons of iron have been used. The iron superstructure is supported on 24 piers and 2 abutments. The centre span being 330 feet; there are 12 spans each side of the centre of 242 feet each. The length of the abutments is 242 feet each. The extreme length, including the abutments, is 7,000 feet. The height above summer water level in the centre opening is 60 feet, descending to either end at the rate of a foot in 130. The contents of the masonry is 3,000,000 of cubic feet. The weight of iron in the tubes is 8,000 tons. The following are the dimensions of the tube through which the trains pass, viz: in the middle span 22 feet high, 15 feet wide; at the extreme ends, 19 feet high 16 feet wide. The total length from river bank to river bank, 10 284 feet, or about 50 yards less than two English miles.

The City Water Works—These works tap the St. Lawrence at the Lachine Rapids, some six miles above the city, they cost the city when completed \$1,000,000. The two receiving reservoirs for supplying the city are about 200 feet above the level of the river, and hold twenty millions gallons. They are situated at the foot of the Mountain, above McGill College.

The Bonsecours Market, on St. Paul and Commissioners streets, is a magnificent edifice in the Grecian and Doric styles, cost about \$300,000, has a front of three stories on Commissioners street, and two stories on St. Paul. The upper part of the building is occupied by the various offices of the City. The City Council Room is fitted up in the most elegant style. In the east wing of the building is a large Hall or Concert Room.

The McGill College—This is an Institution of a very high repute. It was founded by the Hon. James

VISITORS TO THE EXHIBITION

Should not fail to visit

S. McCONKEY'S

New Restaurant and Oyster House,

NO. 241 ST. JAMES STREET,

(Directly opposite Ottawa Hotel.)

The Celebrated Saddle Rock Oysters

RECEIVED DAILY.

Gentlemen attending the Provincial Exhibition

Can't do better than to order their

Fall and Winter Clothing

From **C. BOON,**

And have them ready to take home with them at the close of the
Exhibition. Also, a large Stock of

Ready-Made Clothing, Woolen Underclothing & Haberdashery

C. BOON,

Merchant Tailor and Clothier,

19 ST. LAWRENCE MAIN ST., MONTREAL.

McGill, who bequeathed a valuable estate and £10,000 for his endowment. The Buildings for the Faculty of Arts and Medicine are delightfully situated at the base of the mountain, and command an extensive view.

The Museum of the Natural History Society of Montreal, is situated on University Avenue, corner of Cathcart street. It is open to the public from 10 o'clock a.m. till 6 p.m.

The Bank of Montreal, Place d'Armes, St. James Street, opposite the Cathedral, is an elegant cut stone building of the Corinthian order.

The City Bank, next to the above, is in the Grecian style of cut stone, and built in composite style of architecture.

Molsons Bank, on St. James street, is a handsome structure, built of Ohio sandstone, with pillars of polished Scotch granite.

The Merchants' Bank of Canada, a fine building on the corner of St. James and St. Peter streets, built of Ohio sandstone and pillars of Scotch granite, is one of the finest buildings on the continent.

The Jacques Cartier Bank, situated on the north side of Place d'Armes Square, is a very fine building, built of granite.

The Statue of Her Majesty—This work of art, from the studio of Mr. Marshall Wood—was erected at the South end of Victoria Square, and presented to the City by H. E. the Governor General, on the 21st November, 1872. The cost of the Statue was about \$13,000 together with the Pedestal, the latter the gift of the Corporation.

The Wharves of the city are unsurpassed by any on the American Continent. They are built of wood, and meeting with the locks and cut stone wharves of the Lachine Canal, they present for several miles a display of continuous wharfage, which has few parallels. A

M. P. COURSER & CO.

American Merchant Tailors,

—AND DEALERS IN—

GENTLEMEN'S FURNISHINGS.

We are importing especially for our Trade, the finest ENGLISH, GERMAN, FRENCH and SCOTCH CLOTHS and TWEEDS, with Trimmings to match.

We are also importing and receiving lines of BLACK SILKS from the best makers, and ALEXANDRE KID GLOVES for Ladies and Gentlemen, which we offer as SPECIALITIES.

N.B.—Examine STYLES, QUALITY & Prices before making purchases.

399 NOTRE DAME ST., MONTREAL, P.Q.

DIRECTIONS for MEASURING.

COAT.

1. From seam below Collar to Waist.
2. From Waist to length of Skirt required.
3. From centre of Back to Elbow.
4. From Elbow to middle of hand, between Wrist and Knuckles.
5. Round Chest, *over* the Coat buttoned.
6. Round Chest, under Coat and *over* Waistcoat, (Chest not to be thrown out.)
7. Round Waist, *over* Coat buttoned.

VEST.

8. From back of Neck to length Waistcoat required.

Having had twenty years business experience in the States, and assisted by one of the best Cutters from New York City, we guarantee as good fit and style as can be had in New York, or Boston, or anywhere. Give us a trial and see it demonstrated.

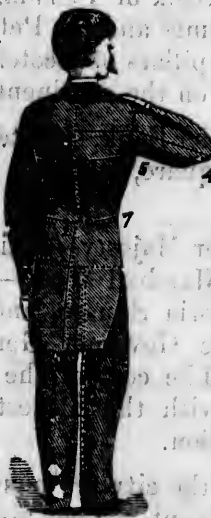
PANTS.

9. From *top* of Waistband to length of Pants required.
10. From Crutch (inside seam) to ditto.
11. Round Waistband.
12. Round Seat.

Please note. Height and Position, (upright or otherwise,) and whether Young or Elderly.

Any person may take the measure with string or tape, stating on paper against each of the foregoing numbers, the number of inches or parts of inches as exactly as possible.

All orders by mail for Samples will receive personal attention.



broad terrace, faced with limestone, the parapet of which is surmounted with a substantial iron railing, divides the city from the river throughout its whole extent.

The general Hospital, on Dorchester street, is a fine cut stone building, and is one of many prominent institutions of the city.

The Protestant Orphan Asylum, situated in St. Catherine Street, is a well conducted charity, sustained by the benevolence of private individuals.

The Theatre Royal, Côté street, is a fine brick building, and capable of accommodating about 1,500 persons.

The Dominion Theatre, Gosford street, is neatly fitted up, and presents many attractions as a place of amusement,

The New Court House, on Notre Dame Street, and directly opposite to Nelson's Monument is of elegant cut stone in the Grecian Ionic style. The ground plan is 300 by 125 feet; height 71 feet.

The New Post Office, now building on St. James Street, near the St. Lawrence Hall, will be, when completed, one of the finest public buildings in the city.

Mount Royal Cemetery is situated on the east side of the mountain, about two miles from the city. Judgment and taste have been displayed in the selection and management of the ground. It is much visited by strangers.

The Champs de Mars—This is a favorite promenade for citizens and strangers, being the general parade and review ground of the military.

Viger Square, near the Champ de Mars, is beautifully laid out into a Garden, with conservatory, fountains, &c.

Place d'Armes, is a handsome square between Notre

BANCROFT & SHARPE'S
HACK AND LIVERY STABLES,
EXPRESS and PARCEL DELIVERY.

**Freight and Baggage called for and
delivered through the City.**

**Carriages, Open and Top Buggies, Saddle
Horses, &c., also, Large Vehicles for
Pic-Nics and Pleasure Parties.**

Office—30 VICTORIA SQUARE,

STABLES:

No. 65 ST. ALEXANDER ST., MONTREAL.

GENTS'
Furnishing Store.

The Largest & Finest Store in the City.

THE NEWEST STYLES IN

Shirts, Collars, Scarfs, &c., &c.

FRANK B. STREET,
No. 185 ST. JAMES STREET,
NEXT TO WESLEYAN CHURCH.

PE'S
TABLES,
VERY.

d for and
City.

es, Saddle
icles for
ties.

ARE,

ONTREAL.

Store.

the City.

St., St.

ET,
REET,

Dame and St. James Streets, opposite the French Cathedral. It is surrounded with a neat iron railing, and is tastefully laid out and planted with shade trees; in the centre of the Square is a fountain.

As a place of beauty and pleasure, the ride from the City around Mount Royal will attract the traveller at all times. The distance is nine miles, commanding one of the finest views of beautiful landscape to be found in North America; and in returning, entering the city, a view of the St. Lawrence and of Montreal, both comprehensive and extended, that well repays time and expense.

Next to the drive around the mountain is that on the Lachine road, leading to the village of that name, nine miles from the city. The road is directly along the banks of the river, presenting scenery of unsurpassed beauty and grandeur. If the proper hour is selected, a view may be had of the descent of the Steamer over the rapids.

Another favorite drive in the immediate vicinity is to Longue-Pointe, being in an opposite direction from the last, and down along the banks of the river.

The Lachine Canal is among the public works, particularly worthy of note, and of which the city may well feel proud. The head of water on this canal has been rendered available for the creation of water power, which has been applied most successfully to the movement of very extensive machinery, over a large extent of ground. Among the works here are foundries, engine and boiler works, ship yards, and marine works, saw mills, sash, blind and door factories, flour mills, cotton mills, edge tool factories, &c., &c., &c.

The Young Men's Christian Association Building, at the corner of Craig and Radegonde street, is a beautiful edifice and an ornament to the city.

At the corner of Dorchester and Cemetery streets, a new Roman Catholic Cathedral, is in course of

THE EQUITABLE Life Assurance Society, OF THE UNITED STATES.

CASH ASSETS, \$21,000,000
CASH INCOME, 9,000,000
SURPLUS, (beyond what is required for Reserve,) over 2,500,000

New Business, Sum Assured, 1872, \$51,911,079.00

Purely Mutual--All Cash--Annual Dividends.

Dividends paid at the end of the FIRST and every
Succeeding Year.

POLICIES NON-FORFEITABLE.

The Society will give a cash value, or its equivalent in a paid-up policy, and thus make policies non-forfeitable as follows:

Life and Endowment Policies, the premiums on which are payable during a stipulated period longer than Ten Years, after THREE annual premiums have been paid.

All Five and Ten payment policies, whether Life or Endowment, after Two annual premiums have been paid, for as many Fifths or Tenths respectively as there shall have been payments made for full yearly premiums.

The Equitable has become the leading company of the World.

Attention is particularly call to the new method of insuring lives originated by The Equitable, combining greater advantages than have heretofore been presented to the public for making Life Insurance a Remunerative Investment.

R. W. GALE,

Manager for the Dominion of Canada and
British Provinces of North America.

HEAD OFFICE--198 St. James St., Montreal, Canada,
Adjoining Molsons Bank.

Good Reliable Agents wanted where the Society is now unrepresented in Canada.

erection. The design is said to be a *fac-simile* of St. Peter's at Rome, and will be one of the chief ornaments of Montreal.

The Grey Nunnery, between Dorchester and St. Catherine streets, near Guy street, is one of the most extensive and best organized charitable institutions in the city, being a foundling hospital as well as a refuge for the infirm.

The French Cathedral, is the longest church on this continent, and is capable of accommodating eight thousand people. It is 255 feet long, by 144 feet wide. Its two Gothic towers are 220 feet high. The great window at the high altar which is filled with beautifully stained glass, is 64 feet high and 32 feet wide. In one of the towers is a fine chime of bells, and the other contains the largest bell in America, weighing 29,400 lbs. This tower is open to the public, and from the top may be had a splendid view of the city and surrounding country.

English Cathedral, corner St. Catherine and University Streets, is a beautiful edifice in the mediæval Gothic style. The plan is cruciform, and is indeed a model of ecclesiastical architecture. The tower and spire are at the intersection of the four arms of the cross, and measure 224 feet in height. The church is built of Caen stone and Montreal limestone. Length of the building inside, 187 feet, width of nave 70 feet; transept, including tower, 99 feet.

The remaining public buildings worthy of notice, are the Custom House, Common Street; the Bon Pasteur Nunnery and Hotel Dieu Hospital, Sherbrooke street; Church of the Gesu, Bleury Street; the Geological Museum, St. Gabriel street; St. George's Church, St. Francois de Sales Street.

Public Parks and Squares.

Mount Royal Park, foot of the Mountain.

Dominion Square, off Dorchester and Cemetery Sts.

RICHMOND SPENCER,
Chemist & Druggist,
 COR. MCGILL and NOTRE DAME STS.,
MONTREAL.

Physicians' Prescriptions & Family Receipts
Prepared with care and from the Purest Chemicals.

Orders from the Country promptly attended to.

AN ASSORTMENT OF
ALL THE LEADING PATENT MEDICINES
 KEPT IN STOCK.

R. HENDERY,
 Manufacturing Silversmith and Electro-Plater,
 IN GOLD, SILVER AND NICKEL,
 Tea Sets, Spoons, Forks, Trays, Bread Baskets
 STEEL KNIVES, SLEIGH BELLS, SEWING MACHINES, &c.

Old Work Repaired and Re-plated equal to
NEW.

ALL ORDERS PUNCTUALLY ATTENDED TO

— AT —
 184 ST. PETER STREET,
MONTREAL.

ICER,
 aggist,
 ME STS.,

ily Receipts
 Chemicals.

y attended to.

MEDICINES

RY,
 electro-Platen,

KEL,
 read Baskets

CHINES, &c.

ted equal to

TENDED TO

REET,

Viger Square, off Craig and St. Denis Sts.
 Victoria Square, between McGill and Beaver Hall.
 Place d'Armes, opposite French Cathedral, Notre
 Dame Street.

Champ de Mars, off Craig and St. Gabriel Streets.
 Chaboillez Square, junction St. Joseph and St Maurice
 Streets.

Beaver Hall Square, head of Beaver Hall Terrace.

Phillips' Square, head of Phillips Place.

Papineau Square, junction of St. Mary and Papineau
 Road.

Custom House Square, off St. Paul, near Custom House.

Jacques-Cartier Square, from the river to Notre Dame.

St. James Square, St. Denis Street, above St. Catherine.

Public Buildings and Institutions.

Custom House, near Custom House and Commissioners
 Street.

Court House, Notre Dame, near Champ de Mars.

City Hall, over Bonsecours market.

Central Police Station, Jacques Cartier Square.

Central Fire Station, Craig, opposite St. François
 Xavier Street.

Corn Exchange, corner St. Sacrament and St. John
 Streets.

Young Men's Christian Association Building, corner
 Victoria Square and Craig Street.

City Jail, near Papineau Square, St. Mary Street.

Merchants' Exchange, St. Sacrament Street.

Montreal Stock Exchange, 58 St. François Xavier St.

Mechanics' Hall, corner St. James and St. Peter Streets.

Museum of Natural History, corner University and
 Cathcart Streets.

Museum of Geological Survey, St. Gabriel Street near
 Craig.

Mercantile Library Rooms, St. Catherine Street, oppo-
 site Cathedral.

Protestant House of Industry, 547 Dorchester Street.

SEWING MACHINES.

J. D. LAWLOR,



365 NOTRE DAME ST.

HOSPICE St. JOSEPH, Montreal, August 5, 1871.

Mr. J. D. LAWLOR:

SIR,—On former occasions our Sisters gave their testimonials in favor of the "Wheeler & Wilson" Sewing Machine; but having recently tested the working qualities of the "Family Singer" manufactured by you, we feel justified in stating that yours is superior for both family and manufacturing purposes.

SEUR GAUTHIER.

Mr. J. D. LAWLOR:

Montreal, Nov. 21, 1871.

SIR,—In reply to your enquiry we have much pleasure in stating that your "Family Singer" Sewing Machine gives entire satisfaction. We have used the "Wheeler & Wilson" and other Machines of American manufacture, but give yours the preference, for family purposes.

MISS PHOEBE ALLAN.

"Ravenscrag" McTavish Street.

Mr. J. D. LAWLOR:

VILLA MARIA, Montreal, Sept. 7, 1871.

SIR,—Having thoroughly tested the qualities of the "Family Singer" Sewing Machine, manufactured by you, we beg to inform you that it is, in our estimation, superior to either the "Wheeler & Wilson," or any other Sewing Machine we have ever tried, for the use of families and manufacturers. Respectfully yours,

The Directress of VILLA MARIA.

INES.

365 NOTRE DAME ST.

l, August 5, 1871.

to their testimonials
machine; but having
family Singer" ma-
that yours is supe-
es.

GAUTHIER.

al, Nov. 21, 1871.
ch pleasure in sta-
had gives entire
Wilson" and other
urs the preference,
EBE ALLAN.
"McTavish Street.

al, Sept. 7, 1871.
es of the "Family
we beg to inform
uer the "Wheeler
ave ever tried, for
tually yours,
of **ELLA MARIA.**

Protestant Infants' Home, 9 Notre Dame Street.
Protestant Orphan Asylum, 1045 St. Catherine Street.
Protestant Institute for deaf mutes, Côte St. Antoine.
Post Office, corner St. James and St. François Xavier
Streets.
Reformatory School, 487 Mignonne Street.
Roman Catholic Orphan Asylum, 745 St. Catherine St.
St. Andrew's Home, 484 Dorchester Street.
St. George's Home, 139 St. Antoine Street.
St. James' Club, corner Dorchester and University Sts.

Hospitals.

Montreal General Hospital, corner Dorchester and St.
Dominique Streets
Hotel-Dieu Hospital, upper St. Urbain Street.
Grey Nunnery, Guy Street, corner Dorchester.
Bon Pasteur Nunnery, Sherbrooke Street, near St.
Constant.
University Lying-in Hospital, 93 St. Urbain Street.
Montreal Dispensary, St. Antoine Street.

Colleges.

McGill College, Sherbrooke Street.
McGill Medical College, Upper University Street.
Montreal College, Priests farm, Sherbrooke Street.
St. Marys College, corner Dorchester and Bleury Streets.
Victoria Medical College, St. Famille Street.
University of Bishops College, (Medical) Ontario St,

Banks.

Bank of British North America, 140 St. James Street.
Banque Ville-Marie, 8 St. Lambert Hill
Bank of Montreal, Place d'Armes.

THE
Railway and Newspaper

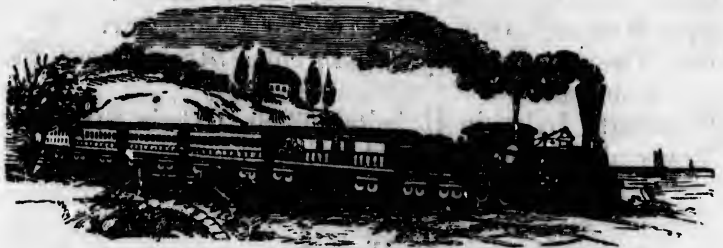
ADVERTISING COMPANY,

(LIMITED.)

199 St. James Street,

CORNER ST. PETER STREET,

MONTREAL.



Incorporated by Letters Patent, 32-33, Vic., Cap. 13.

CAPITAL - \$200,000.

DIRECTORS:

HENRY SHACKELL, Esq., GEO. E. DESBARATS, Esq.,

THOMAS E. FOSTER, " FRANCIS E. GILMAN, "

A. W. OGILVIE, Esq.

THOMAS E. FOSTER, President,

HENRY SHACKELL, Vice-President.

EDWIN KEMP, Secretary-Treasurer.

spaper

PANY,

Street,

TREET,



., Cap. 13.

00,000.

BARATS, Esq.,
GILMAN, "

Vice-President.
urer,

25

Bank of Toronto, cor St. James and St. John Street.
Banque du Peuple, 121 St. James Street.
Banque Jacques-Cartier, Place d'Armes.
City Bank, Place d'Armes.
Exchange Bank of Canada, 60 St. Francois Xavier
Street.

Molsons Bank, 200 St. James Street.
Mechanics Bank, 190 St. James Street.
Metropolitan Bank, St. James Street.
Ontario Bank, Place d'Armes.
Quebec Bank, Place d'Armes.
Royal Canadian Bank, 158 St. James Street.
Union Bank of Lower Canada, Notre Dame Street.

Hotels.

St. Lawrence Hall, St. James Street.
Ottawa Hotel, St. James Street.
Albion Hotel, McGill Street.
Montreal House, Custom House Square.
Canada Hotel, 17 St. Gabriel Street.
City Hotel, St. Joseph Street.
Donegana Hotel, 21 Notre Dame Street.
Victoria Hotel, 13 Latour Street.
American House, St. Joseph Street.

Markets.

Bonsecours Market, St. Paul Street.
Cattle Market, Craig Street, near Viger Square.
Haymarket, College Street.
Papineau Market, St. Mary Street.
St. Ann's Market, McGill Street.
St. Antoine Market, Mountain Street.
St. Gabriel Market, St. Gabriel Farm.
St. Lawrence Market, St. Lawrence Street.
St. James Market, Ontario Street.

J. STENHOUSE,
Hatter & Furrier
189 ST. PETER STREET.

A LARGE ASSORTMENT OF
LADIES' & GENTS' FURS always on hand,

— ALSO, —

THE LATEST STYLES

IN ALL KINDS OF

GENTS' & YOUTHS' HATS

LADIES' and GENTS'

Furs Cleaned, Altered & Repaired

ON SHORT NOTICE.

HIGHEST PRICE PAID FOR RAW FURS.

For AMERICAN STYLES in

BOOTS & SHOES,
 CUSTOM OR READY-MADE,

Call at **EVANS & CO'S.**

221 MCGILL STREET,

Custom Work a speciality, and executed with despatch in American, English or French Styles.

EVANS & CO., No. 221 MCGILL ST.

Theatres.

Theatre Royal, Cote Street.
 Dominion Theatre, Gosford Street.

Telegraph Offices.

Dominion Telegraph Company, 89 St. Francois Xavier Street.
 Montreal Telegraph Company, 12 St. Sacrement St.

Express Offices.

Canadian Express Company, Office 84 St. Francois Xavier Street
 United States & Canada Express Company, 84 St. Francois Xavier Street.
 National Express Company 84 St. Francois Xavier St.
 Bancroft & Sharp's City Express, 30 Victoria Square.
 A. Larin's City Express, 45 St. John Street.
 Dumaine & McVey's City Express, 1 Campeau St.

Railway Ticket Offices.

Grand Trunk Railway, 143 St. James Street.
 Vermont Central, 136 St James Street.
 South Eastern Railway, 202 St. James Street.

Ocean Steamers.

Allan's Liverpool Line, Office corner Youville and Commissioners Streets.
 Allan's Glasgow Line, Office Commissioners Street.
 Liverpool, New York and Philadelphia Steamship Company, Office 3 India Chambers, Hospital Street.

AGRICULTURAL Insurance Company.

Capital, - - - - - \$500,000.00

Gov't Deposit, - - - \$100,000.00

245 ST. JAMES ST., MONTREAL.

E. H. GOFF, Manager ; J. H. SMITH, Inspector.

This Company makes a speciality of Insuring

Farm Property and Residences

Against Fire and Damage by Lightning,

WHETHER FIRE ENSUES OR NOT.

Insures LIVE STOCK

AGAINST LIGHTENING ALSO, AND

Pays all Losses if Killed by Lightning

ANYWHERE ON ASSURED'S OWN PREMISES.

Reasonable Rates & Prompt Settlement of Losses

Quebec and Gulf Port Steamers, 303 Commissioners St.
Dominion Line, Liverpool Steamers, Office 10 Hospital
Street.

Temperleys Line, London and Montreal Steamers,
Office 305 Commissioners Street.

Lake and River Steamers.

Canadian Navigation Coy., Office 177 St. James St.
Merchants' Lake Ontario Line, Office 85 Common St.
Merchants' Chicago Line, Office 94 Common Street.
River St. Lawrence Steamboat Coy., Office 85 Canal
Wharf.

Montreal & Ottawa Forwarding Coy., 69 Canal Wharf.
St. Lawrence Navigation Coy., Office Canal Basin.

Ottawa and Rideau Forwarding Coy., 60 Common St.
Ottawa River Navigation Coy., 13 Bonaventure Street.
Richelieu Company, Office 228 St. Paul Street.

Laprairie Steamer, Bonsecours Wharf.

Longueuil Ferry-Boat, Hochelaga Wharf.

St. Lamberts Ferry, from wharf near Custom House.

RAILROAD AND STEAMBOAT TIME TABLE.

SUMMER 1873.	DAY		NIGHT.
	A. M.	P. M.	
EXPRESS for West via G. T. R.....	8.00	9.00	
" " N.Y. & Boston via V. C. R.....	8.45	3.45	
" " & White Mountains via South Eastern Railway	7.30	3.15	
" " & Lake Champlain Steamboat	6.00	
" " Island Pond & White Mts.....	7.00	10.00	
" " Quebec and Cacouna.....	8.00	11.00	
STEAMBOAT for Toronto and West.....	noon	
" " Ottawa by River.....	7.00	5.00	
" " Quebec ".....	7.00	
Sail down Lachine Rapids.....	7.00	

DR. SMITH'S
Lung Protector.

PROTECT THE

Chest & Lungs



Colds & Coughs

GUARD AGAINST

This serviceable article fits up closely around the neck, covering both the front and back of the chest, thus affording the most ample protection to the Pulmonary Organs against the influences of cold and the vicissitudes of the climate. A majority of Coughs and Colds which end in Consumption might be prevented by the use of this excellent Protector ; and every person having a tendency to weak Lungs or Pulmonary Affections should wear one during the cold season, both as a means of comfort and health.

SOLD BY THE TRADE EVERYWHERE.

DR. N. A. SMITH & CO.,

SOLE MANUFACTURERS,

MONTREAL & NEW YORK.

I'S
 etlor.

Wald & Daugherty

GUARD AGAINST

the neck, cover-
 fording the most
 ist the influences
 jority of Coughs
 prevented by the
 on having a ten-
 should wear one
 ort and health.

RYWHERE.

CO.,

YORK.

Table of Distances:

	MILES
Montreal to Toronto	370
" to Niagara	451
" to Ottawa	120
" to Quebec	187
" to Portland	297
" to New York	403
" to Chicago	1040
" to White Mountains	201
" to Saratoga	212
" to Boston	334
" to St. John, N. B.	578
" to Halifax	853

Tariff for Carriages within the City Limits.

SINGLE CARRIAGES.—For one or two persons—30 cts.
 per $\frac{1}{2}$ hour, 40 cts. per $\frac{3}{4}$ of hour, and 60 cts. for
 over $\frac{3}{4}$ of an hour, and 75 cts. per hour.

DOUBLE CARRIAGES.—For three or four persons—40
 cts. per $\frac{1}{2}$ hour, 50 cts. per $\frac{3}{4}$ of hour, and 75 cts.
 for over $\frac{3}{4}$ of an hour and under 1 hour.

A large double Carriage with two Horses to go
 around the Mountains and the principal part of the
 City, can be obtained for Four Dollars.





Visitors to the City will find the houses advertised in this Guide to be reliable, and we cheerfully recommend them to all desiring to make purchases as worthy of confidence in every respect and favorably known for fair dealing. The very fact of people advertising their business, shows that they are prepared for competition, and in a great majority of cases their stocks are more desirable than those of their slow going neighbors.

The City Surveyor has put a staff of men to work to open up a new avenue to the Exhibition Grounds by St. Famille Street. This will be a great convenience, not simply for visitors to the exhibition but also for exhibitors, especially of cattle, who will thus be able to get them to the grounds without going through the crowded thoroughfare of St. Lawrence Main Street.

The Annual Exhibition of the Montreal Agricultural and Horticultural Society will be held on the 16th, 17th and 18th September, in Mr. TIFFIN's spacious buildings, No. 652, Craig Street. Whoever takes an interest in fruit and vegetable growing, will be well repaid by a visit to this exhibition.

The Executive Committee have decided on inaugurating a course of free lectures to be delivered during the progress of the Exhibition. One gentleman is expected to deliver a lecture on the state of agriculture in the Province, as compared with that of other countries, which will be supplemented by a general discussion on it and kindred subjects. Mr. D. McEachran, Consulting Veterinary Surgeon to the Council of Agriculture, has kindly agreed to deliver a lecture on farm animals, their care, training and management, which will be illustrated from a veterinary museum.

Due Notice of the lectures will be given.

