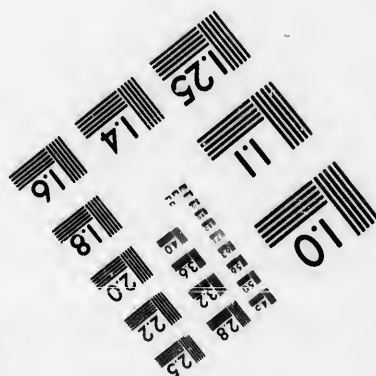
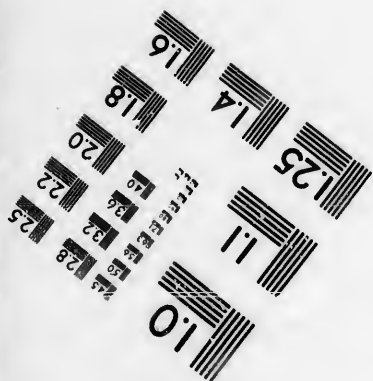
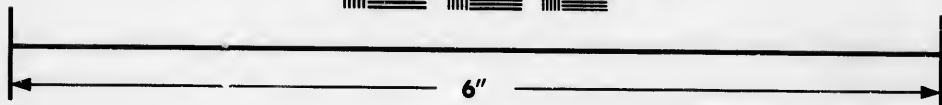
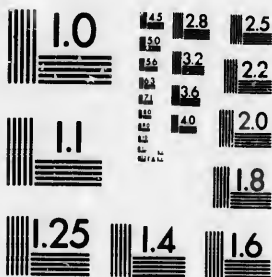


**IMAGE EVALUATION
TEST TARGET (MT-3)**



**Photographic
Sciences
Corporation**

23 WEST MAIN STREET
WEBSTER, N.Y. 14580
(716) 872-4503

**CIHM/ICMH
Microfiche
Series.**

**CIHM/ICMH
Collection de
microfiches.**



Canadian Institute for Historical Microreproductions / Institut canadien de microreproductions historiques

© 1986

Technical and Bibliographic Notes/Notes techniques et bibliographiques

The Institute has attempted to obtain the best original copy available for filming. Features of this copy which may be bibliographically unique, which may alter any of the images in the reproduction, or which may significantly change the usual method of filming, are checked below.

L'Institut a microfilmé le meilleur exemplaire qu'il lui a été possible de se procurer. Les détails de cet exemplaire qui sont peut-être uniques du point de vue bibliographique, qui peuvent modifier une image reproduite, ou qui peuvent exiger une modification dans la méthode normale de filmage sont indiqués ci-dessous.

- | | |
|---|---|
| <input type="checkbox"/> Coloured covers/
Couverture de couleur | <input type="checkbox"/> Coloured pages/
Pages de couleur |
| <input type="checkbox"/> Covers damaged/
Couverture endommagée | <input type="checkbox"/> Pages damaged/
Pages endommagées |
| <input type="checkbox"/> Covers restored and/or laminated/
Couverture restaurée et/ou pelliculée | <input type="checkbox"/> Pages restored and/or laminated/
Pages restaurées et/ou pelliculées |
| <input type="checkbox"/> Cover title missing/
Le titre de couverture manque | <input checked="" type="checkbox"/> Pages discoloured, stained or foxed/
Pages décolorées, tachetées ou piquées |
| <input type="checkbox"/> Coloured maps/
Cartes géographiques en couleur | <input type="checkbox"/> Pages detached/
Pages détachées |
| <input checked="" type="checkbox"/> Coloured ink (i.e. other than blue or black)/
Encre de couleur (i.e. autre que bleue ou noire) | <input checked="" type="checkbox"/> Showthrough/
Transparence |
| <input type="checkbox"/> Coloured plates and/or illustrations/
Planches et/ou illustrations en couleur | <input type="checkbox"/> Quality of print varies/
Qualité inégale de l'impression |
| <input type="checkbox"/> Bound with other material/
Relié avec d'autres documents | <input type="checkbox"/> Includes supplementary material/
Comprend du matériel supplémentaire |
| <input type="checkbox"/> Tight binding may cause shadows or distortion along interior margin/
La reliure serrée peut causer de l'ombre ou de la distorsion le long de la marge intérieure | <input type="checkbox"/> Only edition available/
Seule édition disponible |
| <input type="checkbox"/> Blank leaves added during restoration may appear within the text. Whenever possible, these have been omitted from filming/
Il se peut que certaines pages blanches ajoutées lors d'une restauration apparaissent dans le texte, mais, lorsque cela était possible, ces pages n'ont pas été filmées. | <input type="checkbox"/> Pages wholly or partially obscured by errata slips, tissues, etc., have been refilmed to ensure the best possible image/
Les pages totalement ou partiellement obscurcies par un feuillet d'errata, une pelure, etc., ont été filmées à nouveau de façon à obtenir la meilleure image possible. |
| <input type="checkbox"/> Additional comments:
Commentaires supplémentaires: | |

This item is filmed at the reduction ratio checked below/
Ce document est filmé au taux de réduction indiqué ci-dessous.

10X	12X	14X	16X	18X	20X	22X	24X	26X	28X	30X	32X
			✓								

The copy filmed here has been reproduced thanks to the generosity of:

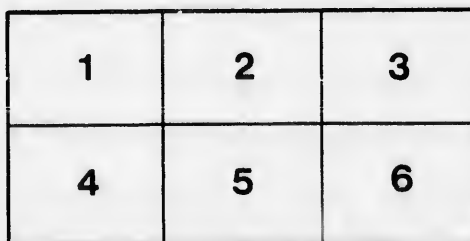
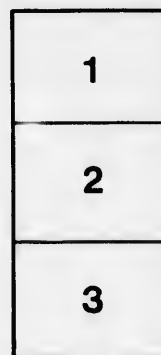
Seminary of Quebec
Library

The images appearing here are the best quality possible considering the condition and legibility of the original copy and in keeping with the filming contract specifications.

Original copies in printed paper covers are filmed beginning with the front cover and ending on the last page with a printed or illustrated impression, or the back cover when appropriate. All other original copies are filmed beginning on the first page with a printed or illustrated impression, and ending on the last page with a printed or illustrated impression.

The last recorded frame on each microfiche shall contain the symbol \rightarrow (meaning "CONTINUED"), or the symbol ∇ (meaning "END"), whichever applies.

Maps, plates, charts, etc., may be filmed at different reduction ratios. Those too large to be entirely included in one exposure are filmed beginning in the upper left hand corner, left to right and top to bottom, as many frames as required. The following diagrams illustrate the method:



L'exemplaire filmé fut reproduit grâce à la générosité de:

Séminaire de Québec
Bibliothèque

Les images suivantes ont été reproduites avec le plus grand soin, compte tenu de la condition et de la netteté de l'exemplaire filmé, et en conformité avec les conditions du contrat de filmage.

Les exemplaires originaux dont la couverture en papier est imprimée sont filmés en commençant par le premier plat et en terminant soit par la dernière page qui comporte une empreinte d'impression ou d'illustration, soit par le second plat, selon le cas. Tous les autres exemplaires originaux sont filmés en commençant par la première page qui comporte une empreinte d'impression ou d'illustration et en terminant par la dernière page qui comporte une telle empreinte.

Un des symboles suivants apparaîtra sur la dernière image de chaque microfiche, selon le cas: le symbole \rightarrow signifie "A SUIVRE", le symbole ∇ signifie "FIN".

Les cartes, planches, tableaux, etc., peuvent être filmés à des taux de réduction différents. Lorsque le document est trop grand pour être reproduit en un seul cliché, il est filmé à partir de l'angle supérieur gauche, de gauche à droite, et de haut en bas, en prenant le nombre d'images nécessaire. Les diagrammes suivants illustrent la méthode.

ails
du
odifier
une
mage

rrata
o

pelure,
à

32X

24 Arts et métiers, no 6

THE MAKING MAN

Bibliothèque

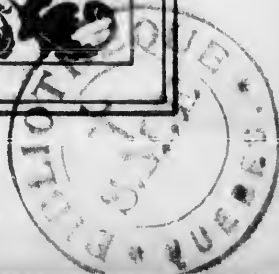
Le Séminaire de Québec

3, rue de l'Université,

Québec 4, QUE.



1899



BIBLIOTHEQUE

—DE—

M. l'abbé VERREAU

No

Classe

Division

Série

NG COMPARISON.

ers Life Insurance Co.

* * *

cturers Life made the following
1897:—

	\$1,205,495;	Gain %	10.15.
	67,884;	“ “	15.14.
Increase in Assets, - -	229,695;	“ “	17.76.
Excess of Income over Disbursements, - - -	105,849;	“ “	88.62.
Total Insurance in force, -	\$13,072,724.		
“ Income, - - - - -	516,166.		

Policies indisputable after one year. No restrictions.

GEORGE GOODERHAM,
President.

J. F. JUNKIN,
Man. Director.

GEORGE A. STERLING, *Secretary.*

MONTREAL OFFICE: 4
260 St. James Street.

E. W. WILSON, *Manager.*
L. A. WINTER, *Cashier.*

WHEN IN DOUBT —————→

GO TO



CHAPMAN'S

You can always get the latest in

BOOKS, STATIONERY and INFORMATION at

CHAPMAN'S BOOK STORE,

- 2407 St. Catherine Street, - - Montreal.

TELEPHONE UP 927.



THE making of a man is both process and result. It implies the process and points to the result.

I.

There is much involved in the making—heredity, environment; self-activity, —other words for parentage, circumstances in life, and the effort which every man puts forth to gain a foothold in the struggle and competition of our complex modern civilization. And every advantage counts.

II.

Consider the result gained in the man. With what feelings of gratification we regard the man who, by persistent effort and a steadfast use of opportunities, earns a place of trust, honor and reward in the estimation of his fellowmen. A man who has justly and honorably succeeded is at once a strength and inspiration to others. He is added strength to the community. The strength of this city is the character of her citizens.

III.

These considerations have a fundamental bearing upon young men. The young man is in the making. The future of the community and of the nation is wrapped up in his future. Any word or act which can aid him to reach the best result is of vital importance. This little booklet is a contribution towards that end.

IV.

It presents in concise form the regular and special privileges of membership in the Young Men's Christian Association, and in addition a number of features of interest to every young man.

The Montreal Association was organized in 1851, the first of the kind in North America. The parent Association was formed in London on June 6th, 1844, through the efforts of the present Sir George Williams.

V.

The handsome and well-equipped Building on Dominion Square, opened in 1891, is the generous gift of philanthropic, public-spirited citizens, who are friends of and believe in young men. It is the expression of their interest in them as a class, and of the provision they would make for their welfare.

It contains splendid facilities for physical exercise in the Gymnasium and baths, opportunities for self-improvement and study in the Reading Room, Library, Literary Society and Educational Classes, good companionship in the large numbers of young men who are identified as members. Any young man of good moral character, without regard to religious belief or nationality, may become a member on payment of the stated fees.

VI.

The young men of our city are invited to read this announcement of the Association and its work, and to call and visit the Building at any time. They will be heartily welcomed and cheerfully shown through. They are also cordially invited to join the Association and avail themselves of its privileges.



Social habits indicate character and determine it. They make or unmake men.

The character of a young man is largely indexed by the question "How does he spend his evenings?" There are a thousand ways of spending spare time in this city. Not hard to kill time here. Night and day hundreds of resorts are open which appeal specially and almost solely to young men. The influence of these places is, as a rule, hurtful.

The Association is an open door to every young man who wants the good as opposed to the evil. It is a home for young men away from home. A place of good resort for those who are living at home. It offers recreation without temptation. It offers a solid and enduring substitute for the fast life sought after by many young men. The warm hand of Christian helpfulness, the uplifting influence of good companionship and inspiration to right living are here extended. Surely this is better. Better to-day—better to-morrow and better for eternity.

No Cosier Spot

In all the city for an evening chat than around the large open fire-place in the Reception Hall of the Building as you enter. Plenty of fellows to talk to.

The Parlors

Open off the Reception Hall and are tastefully furnished. Not so much as to make you fear to sit down—just right. Make yourself comfortable for a read or a talk with a friend. Or would you care to have a game of Chess or Checkers? Perhaps you play the piano?

Each Evening

One or two members of the Association hold themselves at liberty to show visitors over the Building, and to make the new man feel at home.

Perhaps you have lived in the city all your life and have never visited the Building. Drop in to-night. You'll enjoy it, and be sorry you hadn't called before.

Stranger Young Men

Coming to the city are made specially welcome. The first few days or weeks of a young man's residence in a strange city are a critical period. He needs to fall in with the right kind of companions. The Association is a good place to go. The Secretary will be pleased to have such young men call on him and will gladly be of service to them.

Every Thursday Evening

Is set apart for informal social gatherings, concerts, lectures and other events which go to make this particular evening distinctive. No Educational or Gymnasium classes on this evening. The effort is to provide something of a special and interesting nature. The Reception and Social Committees combine to this end.

The following events are suggestive:

Sept. 28.—Reunion of Educational Class Students.

Oct. 12.—Opening Members' Reception.

Jan. 1.—New Year's Reception.

March 29.—Educational Class Commencement Exercises.

The Orchestra

Meets every Monday evening in the Lecture Hall for rehearsal under the efficient leadership of Mr. Chas. Reichling.

Glee Club

A musical and social organization. Any member of the Association is eligible for membership on passing a satisfactory examination. The Club continues this year under the able leadership of Mr. Percy Moore, B.A.

The Camera Club

Is composed of members interested in amateur photography. The Club has a studio and dark room on the fifth floor, with ample facilities for developing and for indoor work. A small yearly fee covers expenses.

The Literary Society

Meets on Thursday evening at 8 o'clock, during the Fall and Winter season, for the study and practice of public speaking. Live topics are debated from time to time. Members secure valuable training in the art of public speech. A fine opportunity this.

Lecture and Concert Course

Following out the course of last year on a little broader lines, it is proposed to give a second course this Fall and Winter, somewhat as follows :

October, . . .	Lecture.
November, . . .	Illustrated Lecture.
December, . . .	Glee Club and Orchestra.
January, . . .	Lecture.
February, . . .	Concert.
March, . . .	Glee Club and Orchestra.

At this date it is impossible to make fuller announcement, but due notice will be given. Tickets for the entire course will be sold at a low rate. The coöperation of the members is asked to make this feature a thorough success.

The Reading Room and Library.

The Reading Room is large, cheerful, well-lighted and one of the most pleasantly situated rooms in the building. It contains about 150 of the best daily and weekly papers and periodicals, from Canada, the United States and Great Britain. All the Standard Magazines are on file.

The Circulating Library contains nearly 4,000 volumes of well-selected works by the best authors in Fiction, English Literature, History, Biography, Travel and Popular Science. New books are added from time to time. Catalogues for consultation may be found in the Library.

The Reference Library contains the Britannica, Appleton and Chambers' Encyclopædias and other valuable reference works. A section is devoted to Commentaries and works on Bible study, of interest and help to Sunday School teachers and Christian workers.

The Librarian is always glad to give information about books and articles of interest to the members.

Correspondence Tables will be found in the Reading Room, and writing materials are furnished free on application at the desk.

The Boarding House Register may also be consulted if you are looking for rooms or board.

The Employment Bureau is open every week-day morning from 9.30 to 10.30. It is intended to help unemployed young men in their efforts to find employment. No charge.

The Secretaries are always ready to visit sick young men, or to counsel with young men in difficulty. They are glad to interest themselves on behalf of young men coming as strangers to the city or otherwise.

The Association has thirty-nine bedrooms on the third, fourth and fifth floors of the building, for rental to members at moderate rates. They are well furnished and cared for. Incandescent light, steam heat, and baths on the third and fourth floors, make them very desirable. The use of the elevator is included. The location is, without doubt, the finest in the city. Apply at the office.



IN the making of a man education plays an all-important part. No debate on that point. And yet, notwithstanding our excellent school system, hundreds of young men are compelled to start life handicapped for want of more thorough training. Hundreds, too, find the need of additional training as they advance in business.

The only hope of improvement lies in the wise and diligent use of spare moments. The Library and Reading Room are of great value, but the Educational Class is exactly to the point. It fits in with spare time. The teachers

are the best that can be secured. The subjects taught appeal directly to the immediate needs of young men in commercial and manufacturing callings.

The Association has recognized and sought to meet this need for many years past.

Hear what some of last year's students say :

"I am very glad to express my appreciation of last season's work in connection with the Advanced Book-keeping Class. I found it eminently practical and helpful, and am greatly indebted to our Instructor for the great thoroughness with which every detail was taught and explained."

"I attended the Mechanical Drawing and Electricity Classes and would like to recommend them to any desiring a knowledge of either of these subjects. An interest is taken in every student by the teachers. It is one of the best investments a young man can make."

"Your classes are exactly what a young man requires. The tuition is all that can be desired, the teachers being most pains-taking and patient in their efforts. It is my intention to enter again next season."

"The splendid inducements offered in your Educational Classes are, to my mind, golden opportunities for every young man with spare time on his hands."

"The practical side presents itself at our daily work when business problems, often hard to solve, are made easy by the knowledge gained at the Educational Class."

"The teachers are of the best, capable and willing, besides being in touch with what a young man requires."

Courses for Evening Study

Fall and Winter 1899-1900

First term begins October 2nd, 1899.

The courses of study here outlined are conducted by the Educational Committee of the Association to meet the needs of young men employed during the day.


Admission to these classes is granted to any Regular (\$5.00) member of the Association on payment of the tuition fees for the season as follows :

French	\$2 00
German.....	2 00
English, Elementary.....	1 00
" Advanced.....	2 00
Arithmetic.....	1 00
Bookkeeping.....	2 00
Shorthand.....	2 00
Penmanship..	1 00
Electricity.....	2 00
Mechanical Drawing.....	1 00
Vocal Music.....	2 00

Entries should be made with the Librarian before September 30th.

No class sessions will be held during the Christmas holidays. Students are expected to provide their own textbooks. Reduced prices may be had on these when purchased through the Association.

The International Examinations will be held during the week beginning April 2nd, 1900. Students are strongly urged to qualify for these.



Description of Courses.

I.

French.

COMTE G. DES ETANGS, M.A., Instructor.

Classes are held in three grades, Elementary, Intermediate and Advanced. The training is in conversation, natural method, with written exercises assigned on the conversation held in the class. The Grammar is dealt with as the student becomes familiar with oral use of the language.

II.

English.

I. GAMMELL, B.A., Instructor.

The Elementary course is intended for those who wish instruction and practice in the use of every day English, spoken and written. It will include studies in:

- (a) Forms and uses of words;
- (b) Structure and punctuation of sentences;
- (c) Business forms and commercial correspondence

Special attention will be given to the correction of common grammatical errors in *oral* English as they may occur in the class work, and to *spelling* and *good form* in written exercises.

The Advanced course is intended for those who wish a more extended study of the language as a means

to the improvement of style in writing, and to the better appreciation of the beauties of English literature. It will include :

- (a) A brief review of the more important parts of the Elementary course ;
- (b) A consideration of the principles of style as applied to the structure of the sentence, the paragraph and the theme ;
- (c) Studies in English Classics, consisting of readings from, discussions and compositions upon the following works :—Lowell's *Vision of Sir Launfal*, Ruskin's *Sesame and Lilies*, selections from Tennyson and Macaulay's *Milton*.

In both courses it will be the aim of the teacher to make the work as practical as possible, and only so much technical grammar will be dealt with as is necessary to secure a correct and intelligent use of the language.

III.

Arithmetic.

I. GAMMELL, B.A., Instructor,

The Elementary Course will include :

Fundamental operations, fractions, common and decimal, compound or denominate numbers and their practical applications. Percentage, interest, discount, profit and loss, taxes, and such other topics as are usually considered under the head of elementary commercial arithmetic, and

The Advanced Course :

In addition to the above, exchange, fire and life insurance, banking, partnership, stocks and bonds, square root and its applications, elementary principles of algebra as applied to arithmetic, metric system, simple mensuration, and such other topics as are usually considered a part of complete commercial and mechanical arithmetic.

IV.

Bookkeeping.

JAMES WALKER, Instructor.

Elementary and advanced, embracing :

Meaning and application of simple mercantile terms, as checks, drafts, notes, statements, invoices, etc. Simple rules and principles for debiting or crediting accounts. Books ; check book, bank pass book, day book, journal, cash book, ledger. Accounts : cash, personal, property, bills payable, bills receivable, merchandise, etc. Business practice : opening and closing books, journalizing, posting, the use of the various books, bank dealings, foreign exchange, systems for checking, short methods, advanced practice, etc.

V.

Shorthand.

R. STANTON WRIGHT, Instructor.

Official Court Stenographer.

Following the system taught by Mr. Wright known as "Pitmanic Shorthand Simplified." It will include :

A study of phonetic principles, the mastery of the phonographic characters, their different modifications and combinations, by a system of easy and progressive lessons. Dictation and practice in reading shorthand notes previously written by the student.

VI.

Penmanship.

JAMES WALKER, Instructor.

Of special value to all bookkeeping students. A good legible running hand, for general use in commercial work, is taught.

Every effort will be made to enable the student to acquire, first : perfect control over his muscles ; second : accurate conception of the correct form of each letter ; third : the style that conforms to his natural movements.

VII.

Electricity.

PROF. L. A. HERDT, Instructor.

ELEMENTARY.

The study of the necessary elements of Magnetism and Electricity in order to attain a thorough knowledge of the principles and practice of Electricity.

Special attention to be given to methods and form of apparatus. The instruction to be by lectures, conversation and recitation, together with illustration by models and lantern slides.

1. Principles of Electricity and Magnetism.
2. Direct Current Dynamos and Motors.
3. Alternating Current Generators.
4. Transformers.
5. Distribution and Transmission of Electricity.
6. Electric Railways.

ADVANCED.

The course is contemplated for the benefit of such as have previously acquired a knowledge of electricity, either at the Association class last year, or those who have made a special study and who can show that their previous education fits them to take up the studies embodied in the course.

1. Dynamo Electric Machinery
2. Transmission of Electricity.
3. Distribution of Electricity.
4. Electric Lighting.
5. Electric Railways.
6. Electric Heating.
7. Instruments and Measurements.
8. Telegraphy and Telephony.
9. Central Stations.
10. Alternate Current Working, including Poly-phase work.

VIII.

Mechanical Drawing.

GEORGE A. GREGG, Instructor.

ELEMENTARY.

1. Drawing materials, their use and care. 2. Front, top and side views of simple geometrical solids—sections, conventional lines, dimensions. 3. Working drawings of simple objects with dimensions. 4. Development of surfaces, plane and curved; patterns; intersections of surfaces. 5. Screw threads, true and conventional; bolts and nuts; working drawings of machine details, full size and to scale, preceded by free-hand dimensional sketches. 6. Pulleys, clamps, wrenches, couplings.

ADVANCED.

1. Working drawings of machine details with dimensioned sketches continued. 2. Valves, shafting details, etc. 3. Full set of working drawings, ready for the shop, of a complete simple machine, such as a bench lathe or small engine. 4. Tracings and blue prints.

IX.

Vocal Music.

PERCY T. MOORE, B.A., Instructor.

The aim of this course is to teach sight reading quickly and give some voice culture, also a drill in part singing, chorus work, etc. As members of this class get advanced in their work they may be admitted to the Glee Club.

X

German.

GOTTHARD L. MARON, INSTRUCTOR.

The Committee announce a class for the study of German the coming season, provided twelve members enter for it. The conversational method will be used. Mr. Maron is highly recommended as an efficient and successful teacher. This is a splendid opportunity to acquire a knowledge of German.

EDUCATIONAL CLASS SCHEDULE.

SUBJECT.	MON.	TUES.	WED.	THUR.	FRI.
FRENCH,	7.30—8.30	7.30—8.30	7.30—8.30	7.30—8.30
“	8.40—9.40	8.40—9.40
“	8.40—9.40	8.40—9.40
ENGLISH,	7.30—8.30	7.30—8.30
“	8.30—9.30	8.30—9.30
GERMAN.....	7.30—9.00	7.30—9.00
ARITHMETIC,	7.30—8.30	7.30—8.30
“	8.30—9.30	8.30—9.30
BOOK-KEEPING,	7.30—8.30	7.30—8.30
“	8.30—9.30	8.30—9.30
PENMANSHIP.....	7.30—9.30
SHORTHAND.....	7.30—8.30	7.30—8.30
ELECTRICITY.....	7.45—9.15
MECHANICAL DRAWING, <i>Elementary</i> ..	7.30—8.30	7.30—8.30
“ <i>Advanced</i>	8.30—9.30	8.30—9.30
VOCAL MUSIC.....	7.30—9.00
GLEE CLUB.....	8.00—9.30
ORCHESTRA.....	8.00—10.00
LITERARY SOCIETY.....	8.00—9.30

"The glory of young men is their strength."
Character is the corner stone, but

Health, Strength and Energy
are
Foundation Stones of Manhood.



To a greater or less extent all men receive these things as a birthright. Some waste their birthright in riotous living, others abuse it by neglect or worry, and some nourish and develop it and become men amongst men.

We want to see every man *a man* amongst his fellows. Our Physical Department aims to develop clean, strong and sterling men. Judicious physical exercise quickens the circulation, clears the mind, and cleanses and invigorates the whole system,

giving one confidence and courage to undertake difficult things.

The Association now has the most complete gymnastic and bathing facilities in the city. We want the weak and awkward, as well as the strong young men of our city, to use the gymnasium this winter. It contains all the best modern gymnastic apparatus, and has the only indoor running track in the city with concave incline corners. Classes are held at stated hours for all sorts and conditions of men. New members enter at any time. All the evening classes and the boys' classes start the week beginning September 18th. All other classes October 2nd.

THE CLASS for BUSINESS and PROFESSIONAL MEN,
(25 years of age and over,) is held every
Monday and Friday, 5 to 6 P.M.

STUDENTS' CLASS and YOUNGER BUSINESS MEN,
on Wednesday and Saturday, at 5.15 and 5
P.M., respectively.

**JUNIOR CLASS, (14 to 18 years of age,) Monday and
Wednesday, 7.45 P.M.**

YOUNG MEN, (18 years and over) :

Elementary Class, Tuesday and Friday,
7.45 P.M.

Intermediate Class, Monday and Wednesday,
8.45 P.M.

Advanced Class, Tuesday and Friday, 8.45
P.M.

No classes on Thursday and Saturday evening.

All classes for one hour. Members should exercise daily, either at home or in the gymnasium. Always bathe after exercising. Brain workers need exercise more than any other class. Mechanics and other skilled workmen need light gymnastics to prevent asymmetry and stiffness.

Physical Examination.

Before using any of the privileges of the Physical Department, members are required to register with the Physical Director and take a physical examination. This is free of charge, and is given in the Director's office on the fifth floor. If preferred, an examination by any regular city physician will be accepted instead. Blanks for this purpose may be obtained from the Physical Director. An appointment for examination should be made immediately on joining.

Gymnasium Clothing.

Suitable clothing is necessary to secure the best results from exercise. The regulation uniform is a black sleeveless jersey with red triangle on the breast, belt in Association colors (red, grey and black), grey

trousers, and black rubber-soled shoes. Members are required to wear rubber-soled shoes when exercising, and the regulation jersey is to be worn for all class work. Long stockings must also be worn with short pants.

Lockers.

May be rented by members for the keeping of clothing. We have 866 lockers, all well ventilated and fitted with combination locks.



Bathing.

The bathing facilities are of the very best, and must be seen to be appreciated. The baths comprise five showers, two needles and one tub. The swimming bath is 40 x 16 feet, graded depth, and the water is kept at 68° to 70°. The baths are all finished in white tile and marble, with nickel trimmings and tiled floor. An abundant supply of hot water is available at all times. Trunks are worn while swimming.

Experience has shown the wisdom of the Club organization now found within the Association. Members interested in any particular game or subject elect their own officers and conduct their own affairs, always, however, in harmony with the character and work of the Association. A small fee is usually charged each member to defray incidental expenses. Sustaining members (\$10.00 per year), are entitled to membership in any or all of these clubs without additional fee.

Hockey Club.

The HOCKEY CLUB have the use of the "Arena" Rink two evenings each week for one hour during the skating season. A number of teams are picked and a series of games arranged. A representative team is also selected and plays other teams.

Tennis Club.

The TENNIS CLUB have three fine double courts, one adjoining the building and two corner of Bishop and St. Catherine Sts. Handicap and championship tournaments are held. Games are also arranged with other Tennis Clubs in the city and vicinity.

Bicycle Club.

Our BICYCLE CLUB is one of the largest and best in the Province. The Club is affiliated with the C.W.A., thus giving to all members the privileges of that organization. Social club rides are held and special features are numerous. The Club takes an active part in furthering the interests of wheelmen.

Athletic Club.

The ATHLETIC CLUB is our youngest organization, but it is healthy and has already done good work in giving the members interested in athletics an opportunity for practice and competition. The Club has the use of the Base Ball Park two evenings a week.

Field Day.

The Bicycle and Athletic Clubs have combined to hold the 4th Annual Association Field Day on September 21st at the M.A.A.A. grounds. The Field Days of the past have been very pleasant features and decidedly successful.

Base Ball Club.

A number of teams are organized and a schedule of games arranged for the championship of the Association. A picked nine also plays games with other local teams. The Club use the Base Ball Park Monday and Friday evenings.

Rugby Football Club.

A Rugby Club will be organized and practices held Monday and Friday mornings, beginning in September, at the Ball Park.

Bowling Club.

Two well equipped alleys are under the control of the Bowling Club, and they arrange individual and team contests for trophies.

Basket Ball.

Both Senior and Intermediate teams are organized and entered in the Annual Tournament for the championship of the Association. The series runs through the winter.

Camp.

The Summer Camp, near St. Agathe, has grown to such proportions that a special prospectus is issued annually. The Camp is an ideal place for members to spend their holidays.

Confidential Talks.

A series of talks on Sexual Hygiene, a subject of vital importance to every young man, will be given by the Physical Director during October and November.

CHAS. CUSHING, - - Chairman Physical Dept.
Committee.

DR. W. F. HAMILTON, - Medical Examiner.

WM. H. BALL, - - - Physical Director.



GYMNASIUM CLASS SCHEDULE.

	MON.	TUES.	WED.	THURS.	FRI.	SAT.
Boys' Class.....		4-5.30		4-5.30		10-11.30
Pastors' Class.....	11.30-12.30			11.30-12.30		
Business Men's Clz.s.....	5-6				5-6	
Junior Class.....	7.45-8.30		7.45-8.30			
Elementary Class.....		7.45-8.30			7.45-8.30	
Intermediate Class.....	8.45-9.30		8.45-9.30			
Advanced Class.....		8.45-9.30			8.45-9.30	
Students' Class.....			5.15-6.15			5-6
Floor free for Individual Wrk.*	1-5		1-5	5.30-8	1-5	6.30-9.30
Athletic and Recreative.....				8-9.30		1-4.30
Basket Ball (Team) <small>(practices) start Nov. 1.</small>						
Juniors.....	6.30-7.30					
Business Men.....		5.30-6.15				
Senior and Intermediate.....		6.30-7.30	6.00-7.30			

*Every morning but Saturday, from 8 to 12.

The Statement is often Made

That "it matters little what a man believes provided he does what is right." The fallacy of this statement is apparent when one reflects that a man's conduct reveals his character. Right thinking and right belief are the key to right action. Christian character is essential in the making of a man. The Association is a christian organization. The christian motive underlies all its activity. Its supreme aim is to win young men to Christ and to enlist their effort in the extension of His Kingdom amongst young men.

Hence the following weekly meetings for the promotion of the christian life.

The Young Men's Meeting

Saturday Night, 8 o'clock.

An informal service for the presentation and discussion of topics bearing directly and helpfully on daily life. The Service of Song is an attractive feature. Always a bright and profitable meeting. Hundreds of young men have found it so.

The Young Men's Bible Class

Sunday Afternoon, 3 o'clock.

Conducted by the General Secretary.

Courses of study specially designed to meet the needs of young men are followed. The method is conversational. This is a popular and most helpful meeting.

The Beginner's Bible Class

Sunday Morning, 9.45.

of special help and interest to those who have recently begun the christian life.

Young Men, whether members of the Association or not, are heartily invited to any or all of these services.

Bible Study Department

The past few years have seen marked emphasis laid upon the study of the Bible. Probably more attention is now given to it in schools and colleges than ever before. Our Association has always attached great importance to this, and last year saw much growth in our evening classes for Bible Study. This year we want to do still better. We desire to see at least one-third of our members enrolled in these classes.

The following courses of study will be conducted.

1. Studies in Faith and Conduct.

Two Classes (a) Tuesday Evening, 8 p.m.

JAMES R. GREIG, Leader.

(b) Thursday Evening, 7 p.m.

LEWIS A. WINTER, Leader.

2. Lessons in Prayer.

(a) Some of the Principles of Availing Prayer.

(b) Some of the Examples of Availing Prayer.

Tuesday Evening, 8 P.M.

FRED MEYERS, Leader.

3. Progressive Bible Studies.

Thursday Evening, 7 P.M.

D. A. BUDGE, Leader.

4. Introductory Course in the Study of the Old Testament.

Tuesday Evening, 8 p.m. (First Year Course).

Thursday Evening, 7 p.m. (Second Year Course).

C. K. CALHOUN, Leader.

These courses are open to all young men, whether members of the Association or not. A very cordial invitation is extended to them to take advantage of the studies here set forth. Students attending the 7 p.m. classes may have tea at the Association for a small charge as last year.

In this connection it gives us great pleasure to announce that Professor W. W. White, formerly of the Theological Seminary, Xenia, Ohio, and latterly engaged in special Bible work in India, the United States and Great Britain, will probably visit our Association in November. He will spend a few days with us in meetings for Bible study. We look for great good in connection with his visit. Full announcement will be made later.

MEMBERSHIP INFORMATION.

Any young man over sixteen years of age, of moral character, may become a member of the Association and enjoy its privileges upon payment of the fee. If unknown to the Secretaries, references will be required. Fees are payable with application, but will be accepted in instalments if desired.

Membership tickets are not transferable but are honored in other Associations. Tickets must be shown when required.

Limited Membership, —\$2.00.—Includes Reading Room, Library, Parlors and Social Privileges.

Full Membership—\$5.00.—Includes above, with Educational and Physical Departments.

Sustaining Membership, —\$10.00.—All privileges, including locker, admission to the various clubs and to the educational classes without extra charge, and contributes to the support of the Association.

Life Membership, —\$100.—Full privileges for life.

What We Do For The Boys.

The Junior Department is a special department for boys from 12 to 16 years of age. Two of the brightest rooms on the second floor are handsomely furnished and set apart for the exclusive use of the boys. These rooms are open daily from 3 to 6 p.m., Saturday from 9 to 12 A.M., and on Monday and Wednesday evenings from 7.30 to 9.30 o'clock.

The Membership Fees: \$1.00 includes Reading Room, Library, and Social Privileges; \$3.00 includes the above with Gymnasium and Baths.

Gymnasium Classes are held on Tuesday and Thursday afternoons at 4.15, and Saturday morning at 10.15 for school boys, also on Monday and Wednesday evenings at 7.45 for *boys working during the day*. The age limit for the latter is 14 to 16 years.

The Boys' Meeting every Friday evening at 7.45.

The Building is open from 8.30 a.m. to 10 p.m. week-days; 9 to 11 a.m., and 2 to 6 p. m. Sundays.

D. A. BUDGE, Secretary.

C. K. CALHOUN, Assistant Secretary.

JOHN ROY, Membership Secretary.

F. E. BURGESS, Librarian.

F. A. CROWE, Junior Secy.

MONTREAL. Sept. 1st, 1899.



Photography is a
Pleasant and
Profitable
Pastime.



A FULL LINE OF

Kodaks, Cameras and Supplies

KEPT IN STOCK BY

W. B. BAIKIE,

2257 St. Catherine Street, MONTREAL.

FREE USE OF DARK ROOM.

For HEADWEAR

GO TO

Up to Date Hatters,

HASLEY BROTHERS,

2252 St. Catherine Street.



*Racoon and Fur-Lined Coats to order
a specialty.*

For **P**HOTOGRAPHS

GO TO

Dennison's

2264 St. Catherine

and

141 St. Peter Streets.

Engraving in

Zinc and Copper Halftones.

YOU may have the best Service



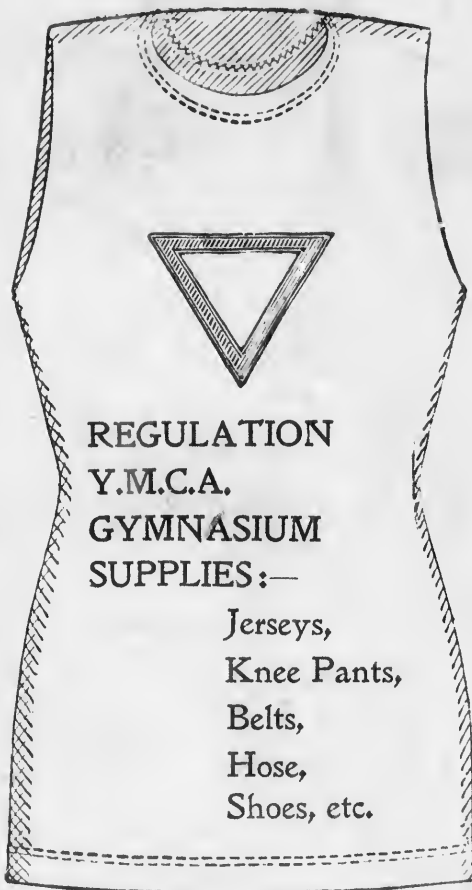
Nos. 8, 10 and 12 Inspector Street

TELEPHONES 444 AND 666.

ALBERT DEMERS & CO.

1840 Notre Dame Street,

1st door East of McGill Street.



CLUB CRESTS TO ORDER.

SPECIAL RATES TO CLUBS.

~~~~~  
*Football and Hockey Suits a Specialty.*



