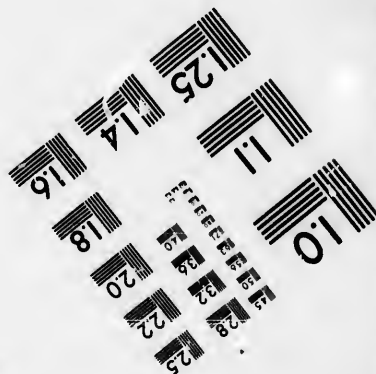
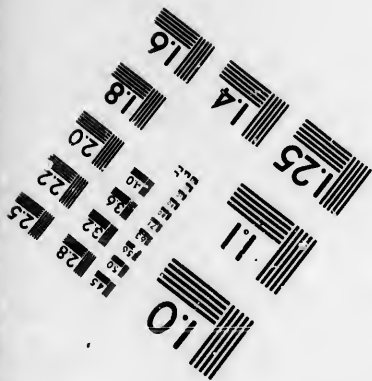
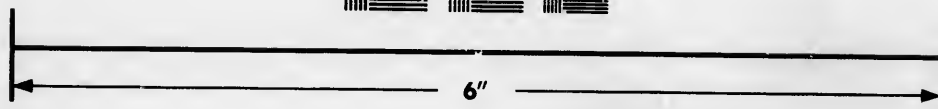
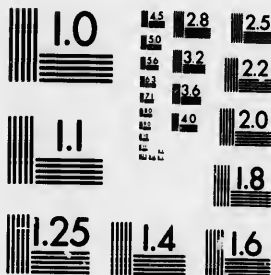


**IMAGE EVALUATION
TEST TARGET (MT-3)**



**Photographic
Sciences
Corporation**

23 WEST MAIN STREET
WEBSTER, N.Y. 14580
(716) 872-4503

1.8
1.9
2.0
2.2
2.5
2.8
3.2
3.6

**CIHM/ICMH
Microfiche
Series.**

**CIHM/ICMH
Collection de
microfiches.**



Canadian Institute for Historical Microreproductions / Institut canadien de microreproductions historiques

1.0
1.1
1.2

© 1986

Technical end Bibliographic Notes/Notes techniques et bibliographiques

The Institute has attempted to obtain the best original copy available for filming. Features of this copy which may be bibliographically unique, which may alter any of the images in the reproduction, or which may significantly change the usual method of filming, are checked below.

L'Institut a microfilmé le meilleur exemplaire qu'il lui e été possible de se procurer. Les détails de cet exemplaire qui sont peut-être uniques du point de vue bibliographique, qui peuvent modifier une image reproduite, ou qui peuvent exiger une modification dans le méthode normale de filmage sont indiqués ci-dessous.

- Coloured covers/
Couverture de couleur
- Covers damaged/
Couverture endommagée
- Covers restored and/or laminated/
Couverture restaurée et/ou pelliculée
- Cover title missing/
Le titre de couverture manque
- Coloured maps/
Cartes géographiques en couleur
- Coloured ink (i.e. other than blue or black)/
Encre de couleur (i.e. autre que bleue ou noire)
- Coloured plates and/or illustrations/
Planches et/ou illustrations en couleur
- Bound with other material/
Relié avec d'autres documents
- Tight binding may cause shadows or distortion
along interior margin/
La reliure serrée peut causer de l'ombre ou de la
distorsion le long de la marge intérieure
- Blank leaves added during restoration may
appear within the text. Whenever possible, these
have been omitted from filming/
Il se peut que certaines pages blanches ajoutées
lors d'une restauration apparaissent dans le texte,
mais, lorsque cela était possible, ces pages n'ont
pas été filmées.
- Additional comments:/ [Printed ephemera] [4] p.
Commentaires supplémentaires:

- Coloured pages/
Pages de couleur
- Pages damaged/
Pages endommagées
- Pages restored and/or laminated/
Pages restaurées et/ou pelliculées
- Pages discoloured, stained or foxed/
Pages décolorées, tachetées ou piquées
- Pages detached/
Pages détachées
- Showthrough/
Transparence
- Quality of print varies/
Qualité inégale de l'impression
- Includes supplementary material/
Comprend du matériel supplémentaire
- Only edition available/
Seule édition disponible
- Pages wholly or partially obscured by errata
slips, tissues, etc., have been refilmed to
ensure the best possible image/
Les pages totalement ou partiellement
obscurcies par un feuillet d'errata, une pelure,
etc., ont été filmées à nouveau de façon à
obtenir la meilleure image possible.

This item is filmed at the reduction ratio checked below/
Ce document est filmé au taux de réduction indiqué ci-dessous.

10X	14X	18X	22X	26X	30X
<input type="checkbox"/>	<input type="checkbox"/>	<input type="checkbox"/>	<input checked="" type="checkbox"/>	<input type="checkbox"/>	<input type="checkbox"/>
12X	16X	20X	24X	28X	32X

The copy filmed here has been reproduced thanks to the generosity of:

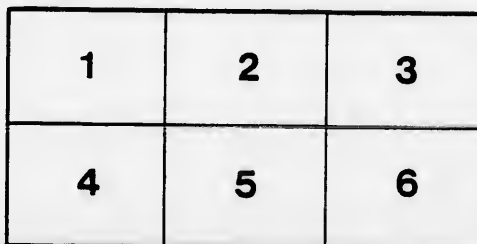
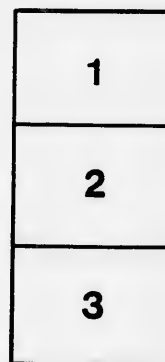
D. B. Weldon Library
University of Western Ontario
(Regional History Room)

The images appearing here are the best quality possible considering the condition and legibility of the original copy and in keeping with the filming contract specifications.

Original copies in printed paper covers are filmed beginning with the front cover and ending on the last page with a printed or illustrated impression, or the back cover when appropriate. All other original copies are filmed beginning on the first page with a printed or illustrated impression, and ending on the last page with a printed or illustrated impression.

The last recorded frame on each microfiche shall contain the symbol \rightarrow (meaning "CONTINUED"), or the symbol ∇ (meaning "END"), whichever applies.

Maps, plates, charts, etc., may be filmed at different reduction ratios. Those too large to be entirely included in one exposure are filmed beginning in the upper left hand corner, left to right and top to bottom, as many frames as required. The following diagrams illustrate the method:



L'exemplaire filmé fut reproduit grâce à la générosité de:

D. B. Weldon Library
University of Western Ontario
(Regional History Room)

Les images suivantes ont été reproduites avec le plus grand soin, compte tenu de la condition et de la netteté de l'exemplaire filmé, et en conformité avec les conditions du contrat de filmage.

Les exemplaires originaux dont la couverture en papier est imprimée sont filmés en commençant par le premier plat et en terminant soit par la dernière page qui comporte une empreinte d'impression ou d'illustration, soit par le second plat, selon le cas. Tous les autres exemplaires originaux sont filmés en commençant par la première page qui comporte une empreinte d'impression ou d'illustration et en terminant par la dernière page qui comporte une telle empreinte.

Un des symboles suivants apparaîtra sur la dernière image de chaque microfiche, selon le cas: le symbole \rightarrow signifie "A SUIVRE", le symbole ∇ signifie "FIN".

Les cartes, planches, tableaux, etc., peuvent être filmés à des taux de réduction différents. Lorsque le document est trop grand pour être reproduit en un seul cliché, il est filmé à partir de l'angle supérieur gauche, de gauche à droite, et de haut en bas, en prenant le nombre d'images nécessaire. Les diagrammes suivants illustrent la méthode.

Copy of a letter addressed by the RT. HON. THE EARL OF ROSEBERY, Chairman of the Imperial Federation League, to its Members throughout the Empire :—

Imperial Federation League.

43, ST. MARGARET'S OFFICES,
VICTORIA STREET, S.W.

October 15th, 1886.

SIR,

The movement towards a Federation of the Empire has lately received an impulse and reached a stage which deserve serious attention and renewed efforts on the part of the League.

It will be within your recollection that a Deputation of our body, including representatives from all parts of the Empire, waited upon the Prime Minister in August last, and urged him "to call a Conference, or to appoint a Royal Commission, " to be composed of accredited representatives of the United Kingdom and of each of " the self-governing Colonies, for the purpose of suggesting some practical means " whereby concerted action may be taken :—

" (1) for placing upon a satisfactory basis the defence of the Ports and
" the Commerce of the Empire in time of war ;

" (2) for promoting direct intercourse, Commercial, Postal, and Telegraphic,
" between the several countries of the Empire in time of peace—and
" any other means for securing the closer Federation or union of all
" parts of the Empire."

Lord Salisbury stated in reply that it would be difficult to overrate the importance of the Deputation, and of the cause which it had in hand. He further promised that the statement laid before him should be carefully considered by the Cabinet.

The Prime Minister has since taken steps in fulfilment of his pledge. In the Queen's Speech on the prorogation of Parliament there occurs this significant paragraph :—

" I have observed with much satisfaction the interest which, in an increasing
" degree, is evinced by the people of this country in the welfare of their Colonial and
" Indian fellow-subjects, and I am led to the conviction that there is on all sides a
" growing desire to draw closer, in every practicable way, the bonds which unite the
" various portions of the Empire. I have authorised communications to be entered
" into with the principal Colonial Governments, with a view to the fuller consideration
" of matters of common interest."

This weighty announcement constitutes an epoch in the history of our movement, to which it is the duty of the Executive Committee to draw the special

attention of the League. Our policy has now for the first time been officially recognised by the Government of this country, which has publicly adopted the suggestions urged upon it last August.

We venture, therefore, to express an earnest hope that members of the League will use every effort to obtain from the Government, the Legislature, and the Press in their various Colonies, careful consideration, and hearty co-operation, for the proposals which are to be made by the Imperial Government in accordance with the announcement in the Queen's Speech.

We would moreover point out how completely the action taken by the Imperial Government is in accordance with the principles of the League, which has refused to commit itself to any particular scheme of Federation, and has preferred to rely upon the initiative and good-will of the Colonies themselves, as expressed through their responsible Representatives.

No definite scheme has ever been advocated by the League, and none is adopted in the Queen's Speech. But the preliminary step which must necessarily precede all action is now to be taken, and the various parts of the Empire are invited to discuss freely and fully matters of common interest with the Imperial Government.

What these matters are it will be for the Representatives of the various Governments to decide. But with a view to guiding your own judgment in the matter I venture to commend to your attention the list of suggestions appearing in No. 9 of our Journal, a reprint of which accompanies this letter. You will find in it a reference to many points of common interest in which unity of administration and practical organisation could not fail to be of great service to the Empire.

It is not for us to lay down the particular methods in which Branches or individual members of the League can best forward the cause of Federation at the present juncture. We ask you, however, to further in every way the carrying out of the promise of the Queen's Speech, and shall be glad if you will forward to the Secretary of the League all information as to the progress you may make, so that workers throughout the Empire may be kept informed of the progress of the other Branches.



CHAIRMAN OF THE "IMPERIAL FEDERATION LEAGUE."
On behalf of the Executive Committee.



