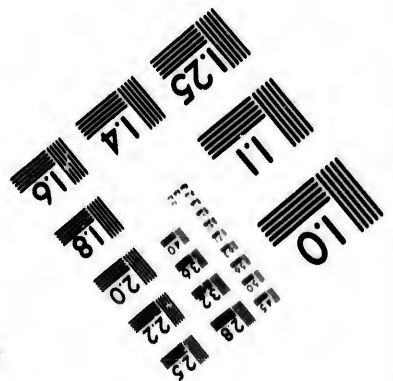
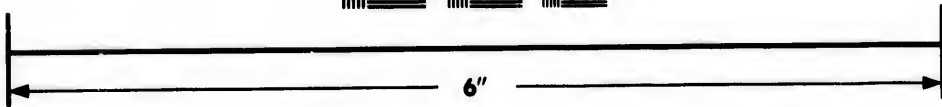
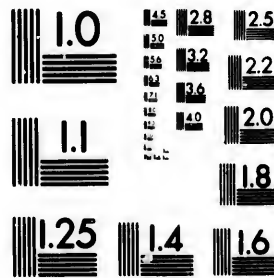


**IMAGE EVALUATION  
TEST TARGET (MT-3)**



**Photographic  
Sciences  
Corporation**

23 WEST MAIN STREET  
WEBSTER, N.Y. 14580  
(716) 872-4903

14 16 28 25  
18 22 20

**CIHM/ICMH  
Microfiche  
Series.**

**CIHM/ICMH  
Collection de  
microfiches.**



**Canadian Institute for Historical Microreproductions / Institut canadien de microreproductions historiques**

11 01

**© 1985**



The copy filmed here has been reproduced thanks to the generosity of:

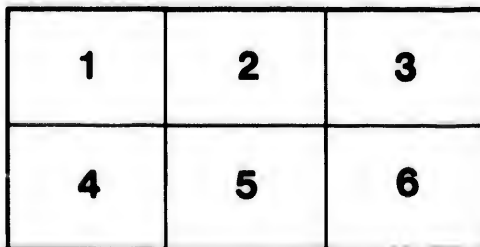
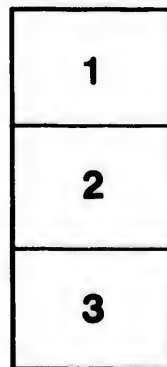
Douglas Library  
Queen's University

The images appearing here are the best quality possible considering the condition and legibility of the original copy and in keeping with the filming contract specifications.

Original copies in printed paper covers are filmed beginning with the front cover and ending on the last page with a printed or illustrated impression, or the back cover when appropriate. All other original copies are filmed beginning on the first page with a printed or illustrated impression, and ending on the last page with a printed or illustrated impression.

The last recorded frame on each microfiche shall contain the symbol  $\rightarrow$  (meaning "CONTINUED"), or the symbol  $\nabla$  (meaning "END"), whichever applies.

Maps, plates, charts, etc., may be filmed at different reduction ratios. Those too large to be entirely included in one exposure are filmed beginning in the upper left hand corner, left to right and top to bottom, as many frames as required. The following diagrams illustrate the method:



L'exemplaire filmé fut reproduit grâce à la générosité de:

Douglas Library  
Queen's University

Les images suivantes ont été reproduites avec le plus grand soin, compte tenu de la condition et de la netteté de l'exemplaire filmé, et en conformité avec les conditions du contrat de filmage.

Les exemplaires originaux dont la couverture en papier est imprimée sont filmés en commençant par le premier plat et en terminant soit par la dernière page qui comporte une empreinte d'impression ou d'illustration, soit par le second plat, selon le cas. Tous les autres exemplaires originaux sont filmés en commençant par la première page qui comporte une empreinte d'impression ou d'illustration et en terminant par la dernière page qui comporte une telle empreinte.

Un des symboles suivants apparaîtra sur la dernière image de chaque microfiche, selon le cas: le symbole  $\rightarrow$  signifie "A SUIVRE", le symbole  $\nabla$  signifie "FIN".

Les cartes, planches, tableaux, etc., peuvent être filmés à des taux de réduction différents. Lorsque le document est trop grand pour être reproduit en un seul cliché, il est filmé à partir de l'angle supérieur gauche, de gauche à droite, et de haut en bas, en prenant le nombre d'images nécessaire. Les diagrammes suivants illustrent la méthode.

e  
étails  
s du  
modifier  
r une  
image

s

rrata  
to

pelure,  
n à

32X

Wesley  
Cate

FI

Wesleyan Methodist church.  
"Catechism... Cree.

THE  
WESLEYAN  
FIRST CATECHISM:

TRANSLATED INTO THE LANGUAGE OF

THE CREE INDIANS,

HUDSON'S BAY TERRITORY.

---

LONDON:  
PRINTED BY W. M. WATTS,  
CROWN COURT, TEMPLE BAR.

—  
1865.

L

L

BX8335.W5

1

2

3

4

5

6

7

ḥnprc.

ḥq-rqjΔ·σ ḡa a'ḥjΔ·a.

ḥylσj.

- 1 Δ∇·a ḥp''ḍr''Δ''?
 

ḥylσj.
- 2 Δ∇·a Δa ḥylσj)?
 

ḥpq ḥ''rΔj''ḍΔ·° c''p ḥ''vΔ''c° ḡa ḥpq  
ḥc·Δ''c°.
- 3 (σU ḥj' ḥylσj)?
 

ḡr∇· ΔU.
- 4 qb: ḥylσj) qḥj'c'x)?
 

Λḍ qb: ∇Δ·j'c'x.
- 5 ḥylσj) ḥ' ḥ''p'° qb: ḥ''q'c'x)?
 

∇∇ ḥ''p'° Δr'rσ° ḥΔU'c'x ḍUΔ'x  
ḥ''p'° ḥ'p'q·Δ·j, ḡa ḥ''p'° j'c'jΔ·j.
- 6 ḥḥa)ḥḥlḍa° ḥ' ḥylσj) ḥ''p'° ḥΔU'c'x  
(L'x ḡa ḥj'c'x)?
 

∇∇ Δ'ḥ·j' ḥ'rḥp ḥ''p'° Δ)ḥqΔ·a  
ḥc'v'c'σΔ·a· ḍḥr'∇·Δ·σ'x ḡa ḥ''p'° ḥ'j'  
Δ''nΔ·a ḡḍr'p, Δ>' ḥj'c'p.
- 7 ḥḥp''Δ' ḥ' ḥylσj)?
 

∇∇ ḥ''p'° qb: ḥ''p''ḍr''c' ḥp''c°.

118214



8 ገጽ 6፡ ፊ የጠቅላይ ገዢ ይሆናል?  
ይህን ገጽ 6፡ ለፊ የጠቅላይ ገዢ ይሆናል።

የጠቅላይ ገዢ ይሆናል።

- 1 ጠቅላይ ገዢ የጠቅላይ ገዢ ይሆናል?  
ጠቅላይ ገዢ የጠቅላይ ገዢ ይሆናል።
- 2 ጠቅላይ ገዢ የጠቅላይ ገዢ ይሆናል?  
ጠቅላይ ገዢ የጠቅላይ ገዢ ይሆናል።
- 3 ጠቅላይ ገዢ የጠቅላይ ገዢ ይሆናል?  
ጠቅላይ ገዢ የጠቅላይ ገዢ ይሆናል።
- 4 ጠቅላይ ገዢ የጠቅላይ ገዢ ይሆናል?  
ጠቅላይ ገዢ የጠቅላይ ገዢ ይሆናል።
- 5 ጠቅላይ ገዢ የጠቅላይ ገዢ ይሆናል?  
ጠቅላይ ገዢ የጠቅላይ ገዢ ይሆናል።
- 6 ጠቅላይ ገዢ የጠቅላይ ገዢ ይሆናል?  
ጠቅላይ ገዢ የጠቅላይ ገዢ ይሆናል።



ለወ ሊቤታው ምን ስህተት ስላለው ይገባል።  
ገላው ስላለው ይገባል።

8 ርዕስ ሊቤታው ስላለው ይገባል። ለወ ስላለው  
ይገባል?

ይህም የሆነው ስላለው ይገባል። የሆነው  
ሆኖ ስላለው ይገባል። የሆነው ስላለው ይገባል።

### ስህተት ስላለው ይገባል።

- 1 ለሆነው የሆነው ስላለው ይገባል?  
የሆነው ስላለው ይገባል።
- 2 ይህም የሆነው ስላለው ይገባል?  
የሆነው ስላለው ይገባል። የሆነው ስላለው ይገባል።  
የሆነው ስላለው ይገባል። የሆነው ስላለው ይገባል።
- 3 ይህም ሊቤታው ስላለው ይገባል። የሆነው ስላለው ይገባል።  
የሆነው ስላለው ይገባል። የሆነው ስላለው ይገባል።
- 4 ይህም የሆነው ስላለው ይገባል። የሆነው ስላለው ይገባል።  
የሆነው ስላለው ይገባል። የሆነው ስላለው ይገባል።

99"ע-  
ס"ע-  
א.נ-  
א.ל-

- 5 96: לb ררר"רלדו.ר\*?  
 ררר"רלדו.ר\* לrר)CJΔ.α Γα ררΔ.ל-  
 (L', Γα ררד.ΛαL' ∇dr ררαα)αL'  
 D>רר"ר9Δ.ר ררLσ).
- 6 96: לb דσL ררCv.צ" b3~?  
 רר DΠσbUר' D(LrΓ"Δ.α, Γα ררדr-  
 vרJ\* Λd דσL Dσ>Δ.ר רר D"ר ΛLΠr\*.
- 7 DΓr ר' b"רL° bר)C(Lr)?  
 αLΔ.ל σbר)C(Lr); לb רrLσ) σbσr'bL'  
 Dbα.Πrד"לb. D"ר ר'Λ' α)C(LΔ.ρ.
- 8 Cσr לb 9Δ"Πr' דσρ ∇b bΓ"רלדו.רr',  
 Γα ∇b b∇.Λαb.° DLrΔΠΔ.σΔ.Δ., Γα  
 ∇b bCv."CΔ.ר' b3~ , Γα ∇b bα)"CΔ.ר' ?  
 σΛC.Δ. bρ9 ΔrדU\* bCΔrΠrΔ.Δ.

ר'לα°  
ר'ד"

ΔrΛΓ\* D"ר Γα bρ9 ΔrדU°.

ר"σ-  
bα-  
bC-

- 1 Cσr לb ∇rΔr' LrLσ) ΔU b'ל' ?  
 ∇ Δ.σΠΛr'b' Δ.Πb' ∇b bΓr'ר'ל' לb'ρσ'  
 Δr'bU°, Γα bD'Δ.ר'b'.
- 2 Cσr רCΔrbb.CρΔ.Δ. דσρ bLΠr'r  
 ∇דU ?  
 Δ.לΔ.Δ. רCbb.CρrΔ. ΔrדU\*, Γα Dc"-  
 לdΔ. bCJr"CΔ. רrLσ) DρrΔ.רΔ.

- 3 ርዕይ ስለ ስላሳ ስለሆነው ለግብርና ለግብርና?  
ግብርናው።
- 4 ርዕይ ስለ ስላሳ ስለሆነው ለግብርና ለግብርና?  
ግብርናው።
- 5 ርዕይ ስለ ስላሳ ስለሆነው ለግብርና ለግብርና?  
ግብርናው።
- 6 ርዕይ ስለ ስላሳ ስለሆነው ለግብርና ለግብርና?  
ግብርናው።
- 7 ርዕይ ስለ ስላሳ ስለሆነው ለግብርና ለግብርና?  
ግብርናው።
- 8 ርዕይ ስለ ስላሳ ስለሆነው ለግብርና ለግብርና?  
ግብርናው።
- 9 ርዕይ ስለ ስላሳ ስለሆነው ለግብርና ለግብርና?  
ግብርናው።
- 10 ርዕይ ስለ ስላሳ ስለሆነው ለግብርና ለግብርና?  
ግብርናው።
- 11 ርዕይ ስለ ስላሳ ስለሆነው ለግብርና ለግብርና?  
ግብርናው።









- 2  $\triangleleft \nabla \cdot a \triangleleft a \Delta' \text{ b}\rho\Delta''\text{N}''?$   
   $\sigma^{\wedge c} \Delta^{\wedge q \cdot} \rho \gamma \text{L}\sigma \dot{\Delta} \cdot \text{ b}\rho''\Delta \gamma''\Delta d' \text{ } \dot{\Gamma} a$   
   $\text{b}\Delta(\gamma \gamma^x \rho \text{b}\Delta \cdot a \cdot)$
- 3  $\triangleleft \nabla \cdot a \triangleleft a \text{ q}?$   
   $\dot{\Delta}^{\wedge c} \Delta \sigma^{\wedge}(\text{J}\dot{h} a, \triangleleft a \text{ b}\rho \sigma < \dot{\Delta}' \Delta \rho \dot{\Delta} \cdot \text{L}$   
   $\nabla \wedge \xi \Delta \cdot$
- 4  $\triangleleft \nabla \cdot a \triangleleft a \nabla \wedge \xi?$   
   $\Gamma \leftarrow \Delta \rho \gamma \rho \sigma^{\circ} \Delta^{\wedge} \wedge - \triangleleft a \text{ q}, \nabla \Delta d \Delta'' \rho$   
   $\text{q} \rho'' < \text{b} \cdot \text{U}^{\circ}$
- 5  $\triangleleft \nabla \cdot a \triangleleft a \dot{\Delta} a'?$   
   $\triangleleft a \Delta \rho \gamma \rho \sigma^{\circ} \text{ b}\rho'' a \Delta'' \gamma \nabla \cdot \dot{\Delta}' \rho \gamma \text{L}\sigma \dot{\Delta} \cdot$   
   $\nabla d \rho \rho \Delta \rho \Delta \dot{\Delta}'' \text{U}' \Delta^{\wedge} \wedge \Gamma^x \nabla \text{b} \nabla \Delta'' \rho \sigma \wedge'.$
- 6  $\triangleleft \nabla \cdot a \triangleleft a \dot{\Delta} \Delta?$   
   $\triangleleft a \Gamma \leftarrow \Delta \rho \gamma \rho \sigma^{\circ}, \text{ b}\rho \wedge \text{L}\rho \Delta'' \Delta^{\wedge} \wedge \text{ b}\sigma^{\wedge}$   
   $\rho \vee' \Delta^{\wedge} \rho.$
- 7  $\triangleleft \nabla \cdot a \triangleleft a \nabla < \text{b}\Delta'' \dot{\Delta}^{\wedge} c?$   
   $\dot{\text{L}} \dot{\Delta} \cdot \dot{\gamma}^{\circ} \Delta \dot{\vee} \cdot \dot{\gamma} \rho''(\text{J} \dot{\Gamma} a \text{ b}\Delta \dot{\Delta}) \text{U}\Gamma' \rho \gamma \text{L}$   
   $\sigma \dot{\Delta} \cdot$
- 8  $\triangleleft \nabla \cdot a \triangleleft a \Delta \cdot \gamma'?$   
   $\nabla < \text{b}\Delta'' \dot{\Delta}^{\wedge} c \Delta d \rho \gamma, \text{ b}\Delta(\sigma \text{U}\rho \wedge' \rho \gamma \text{L} a \dot{\Delta}) \Delta(\rho -$   
   $\dot{\text{L}} \rho \nabla \cdot \dot{?})$
- 9  $\triangleleft \nabla \cdot a \triangleleft a \gamma \text{b}'?$   
   $\dot{\Delta} \cdot \gamma' \Delta \text{N}^{\wedge} \rho \cdot \leftarrow \gamma a \cdot$
- 10  $\triangleleft \nabla \cdot a \triangleleft a \dot{\text{J}} \rho'?$









40  $\Delta a$   $b^k p^{m} \Delta^{n}$   $\Delta r n k \Delta \cdot b^j$   $b^p m^q < r^x$   
 $\Delta \cdot r^p b^q r^x b^z \cdot c$ .

40  $\Delta \nabla \cdot a$   $\Delta a$   $j^c$ ?

$\Delta a$   $b L n r'$   $r^p \cdot \Delta L \Delta \cdot b^j$   $b^p r^q \Delta'$   $b^z \cdot c$ .  
 $\nabla \Delta \eta l'$   $\Delta'' r$ .

41  $\Delta \nabla \cdot a$   $\Delta a$   $b \cdot \Delta < r$ ?

$\Delta a$   $b r^p u^q \Delta'' c d r'$   $\Delta \Delta \Gamma \nabla \Delta \cdot r^p \sigma^o$   $b^p m^q < r^l'$   
 $b^z \cdot c$ .

42  $\Delta \nabla \cdot a$   $\Delta a$   $< z^c$   $< z \Delta'$ ?

$b^p m^q r^p \Delta r^l \Delta'$   $j n \Delta \Delta^x$ ,  $\Delta a$   $b^p \Delta c r^q \Delta'$   
 $r^p \Delta b \cdot r^b \cdot \Delta \Gamma''$   $b^z \cdot c$ .

43  $\Delta \nabla \cdot a$   $\Delta a$   $j^r$   $\Delta \Delta \Delta \Gamma n \nabla \Delta \cdot \Delta \sigma^o$ ?

$\Delta a$   $\nabla \cdot \Delta n r^j \Delta \cdot r^p \sigma^o$   $b^p a'' \Delta z'$   $b^z \cdot c$   $n \Delta \Delta \nabla$ .  
 $\Delta r^k < b \Gamma d \Gamma^x$ .

44  $\Delta \nabla \cdot \Delta \sigma^p$   $\Delta \Delta \Gamma \Delta \cdot r^j \Delta \cdot r^p \sigma^q \Delta \cdot i$ ?

$l' \Delta$ ,  $l^z$ ,  $\Delta \Delta'$   $\Gamma a$   $l^j$ ;  $\Delta \sigma^p$   $b^p r^q \Delta a \Delta''$   
 $b^o$   $b^z \cdot c$   $\Delta \Delta l n r^j \Delta \cdot \sigma^p \sigma^o$   $\Gamma a$   $\Delta \sigma > \Delta \cdot \sigma^p$ .

45  $\Delta \nabla \cdot \Delta \sigma^p$   $\Delta a a \cdot \Delta r$   $\Gamma a$   $\Delta < z \Delta$ ?

$\Delta \Delta r^p \sigma^o$   $\Gamma a$   $\Delta \cdot \Delta$   $r^c m^q \nabla$   $b^p \sigma^p \Delta r^i$   
 $\nabla r^j \Delta r^p r^i \Delta'' r$ .

46  $\Delta \nabla \cdot a$   $\Delta a$   $\Delta r^j \Delta \Delta$ ?

$\sigma^r c$   $\Delta \Delta r^p \sigma^o$   $b^p m^q \sigma < \Delta''$   $b^z \cdot c$   $\Delta'' r$ .

47  $\Delta \nabla \cdot a$   $\Delta a$   $< z$ ?

ᎃᎆᎆᎆ ᎆᎆᎆ ᎆᎆᎆᎆᎆᎆ ᎆᎆ ᎆᎆ ᎆᎆ ᎆᎆ ᎆᎆ ᎆᎆ ᎆᎆ ᎆᎆ ᎆᎆ ᎆᎆ ᎆᎆ  
ᎆᎆᎆᎆᎆᎆᎆ ᎆᎆᎆᎆᎆᎆᎆᎆ.

48 ᎆᎆᎆᎆ ᎆᎆᎆ ᎆᎆᎆᎆ?

ᎆᎆ ᎆᎆᎆᎆᎆᎆᎆ ᎆᎆᎆᎆᎆᎆᎆᎆ ᎆᎆᎆᎆᎆᎆ  
ᎆᎆᎆᎆᎆᎆᎆ ᎆᎆ ᎆᎆᎆᎆᎆᎆᎆ ᎆᎆᎆᎆᎆᎆ ᎆᎆᎆᎆᎆᎆᎆ.

49 ᎆᎆᎆᎆ ᎆᎆᎆ ᎆᎆᎆᎆᎆ?

ᎆᎆᎆᎆᎆᎆ ᎆᎆᎆᎆᎆᎆ ᎆᎆᎆᎆᎆ ᎆᎆᎆ ᎆᎆᎆ ᎆᎆᎆᎆ  
ᎆᎆᎆᎆᎆᎆ ᎆᎆᎆᎆᎆᎆᎆ ᎆᎆᎆᎆᎆᎆᎆᎆᎆ.

50 ᎆᎆᎆᎆ ᎆᎆᎆ ᎆᎆᎆᎆᎆ?

ᎆᎆᎆᎆᎆᎆ ᎆᎆᎆᎆᎆᎆ ᎆᎆᎆᎆᎆᎆᎆᎆᎆᎆᎆ, ᎆᎆᎆᎆ  
ᎆᎆᎆᎆᎆᎆᎆ ᎆᎆᎆᎆᎆᎆᎆ.

51 ᎆᎆᎆᎆ ᎆᎆᎆ ᎆᎆᎆᎆᎆ?

ᎆᎆᎆᎆᎆᎆ ᎆᎆᎆᎆᎆᎆᎆᎆ ᎆᎆᎆᎆᎆᎆᎆᎆᎆ ᎆᎆᎆᎆ  
ᎆᎆᎆᎆᎆᎆᎆᎆᎆ ᎆᎆᎆᎆᎆᎆᎆᎆᎆᎆ.

52 ᎆᎆᎆᎆ ᎆᎆᎆ ᎆᎆᎆᎆᎆᎆᎆ?

ᎆᎆ ᎆᎆᎆᎆᎆᎆᎆ ᎆᎆᎆ ᎆᎆᎆᎆᎆᎆᎆᎆᎆ ᎆᎆ ᎆᎆᎆᎆᎆᎆᎆᎆ.

ᎆᎆᎆᎆᎆᎆ ᎆᎆᎆᎆᎆᎆᎆᎆᎆᎆᎆ.

ᎆᎆᎆᎆ ᎆᎆᎆ ᎆᎆᎆᎆᎆᎆ ᎆᎆᎆᎆᎆ ᎆᎆᎆ ᎆᎆᎆᎆᎆ  
ᎆᎆᎆᎆᎆ ᎆᎆᎆᎆᎆᎆ, ᎆᎆᎆᎆᎆ, ᎆᎆᎆ ᎆᎆᎆ ᎆᎆᎆᎆᎆ  
ᎆᎆᎆᎆᎆᎆᎆ ᎆᎆᎆᎆᎆᎆᎆᎆᎆᎆᎆ ᎆᎆᎆᎆ ᎆᎆᎆᎆᎆ ᎆᎆ  
ᎆᎆᎆᎆᎆᎆᎆᎆᎆᎆᎆ ᎆᎆᎆᎆᎆᎆᎆᎆ.





5 𐌱𐌹𐌸𐌰 ᐃ𐌺𐌰. 𐌲𐌰 𐌱ᐃ. 𐌱𐌶. 𐌱𐌸𐌺𐌶  
𐌺𐌶 𐌠𐌶𐌶, 𐌲𐌸𐌶. 𐌲ᐃ. 𐌱𐌶𐌺𐌶)

6 𐌰𐌺𐌰. 𐌱ᐃ<𐌺.

7 𐌰𐌺𐌰. 𐌱ᐃ𐌸ᐃ.

8 𐌰𐌺𐌰. 𐌱ᐃ𐌸.

9 𐌰𐌺𐌰. 𐌱ᐃ𐌸. 𐌱𐌶𐌺𐌶 𐌸𐌺𐌶 𐌱𐌸𐌺𐌶  
𐌸.

10 𐌰𐌺𐌰. 𐌱ᐃ𐌺𐌶. 𐌸𐌺𐌶 𐌱𐌸𐌺𐌶. 𐌸, 𐌰,  
𐌰𐌺𐌰. 𐌱ᐃ𐌺𐌶. 𐌸𐌺𐌶 𐌱𐌸𐌺𐌶. 𐌸. 𐌲  
𐌸𐌺𐌶, 𐌲𐌸 𐌸𐌺𐌶. 𐌲𐌸, 𐌲𐌸𐌺𐌶,  
𐌲𐌸 𐌸𐌺𐌶. 𐌲𐌸 𐌲𐌸: 𐌸𐌺𐌶. 𐌸𐌺𐌶.

---

𐌸𐌺𐌶. 𐌸𐌺𐌶. 𐌸𐌺𐌶. 𐌸𐌺𐌶. 𐌸𐌺𐌶.

𐌱𐌸𐌺𐌶. 𐌱𐌸𐌺𐌶, 𐌱𐌸𐌺𐌶 (𐌲) 𐌲𐌸:  
𐌲𐌸. 𐌲𐌸 𐌸𐌺𐌶 𐌸𐌺𐌶. 𐌸𐌺𐌶. 𐌸𐌺𐌶. 𐌸𐌺𐌶.  
𐌲𐌸. 𐌲𐌸. 𐌸𐌺𐌶 (𐌲𐌸) 𐌸𐌺𐌶.  
𐌲𐌸. 𐌲𐌸. 𐌲𐌸. 𐌲𐌸.

𐌲𐌸. 𐌲𐌸. 𐌲𐌸. 𐌲𐌸. 𐌲𐌸. 𐌲𐌸.  
𐌲𐌸. 𐌲𐌸. 𐌲𐌸. 𐌲𐌸. 𐌲𐌸. 𐌲𐌸.  
𐌲𐌸. 𐌲𐌸. 𐌲𐌸. 𐌲𐌸.

אֲלִימֵדָּ אֲדִי! רְעֵל־עֲבֵר בְּרִמְזוֹ לַעֲרֹב־שָׁמַיִם דּוֹרָר  
 בְּלַבַּיטִי; וְדִבֶּר רִפְּוֹ דִּמְצֻרֵי דַּעַב־  
 בְּעֵינֵי בְּרִיָּה, וְעֹלָמוֹ לְרִמְזוֹ בְּזֵדְוֹ פִּדְוֹ. וְדָר.  
 רִפְּוֹ (י) וְבַע: בְּרִמְזוֹ שֶׁל־שָׁמַיִם דַּעַב סְלִמְדָּ:  
 אֲלִי דַּעַב־פְּבֵרִים דִּמְצֻרֵי דּוֹרָר רְעֵל־עֲבֵר  
 דַּעַב: דַּעַב־פְּבֵרִים רְעֵל־עֲבֵר רְעֵל־עֲבֵר וְדִבֶּר  
 רְעֵל־עֲבֵר אֲלִימֵדָּ רִמְזוֹ שֶׁל־שָׁמַיִם רְעֵל־עֲבֵר  
 דַּעַב־שָׁמַיִם.

וְדִבֶּר דַּעַב־פְּבֵרִים דַּעַב־פְּבֵרִים, אֲדִי! וְדִבֶּר־רִמְזוֹ,  
 וְדִבֶּר־רִמְזוֹ בְּרִמְזוֹ שֶׁל־רִמְזוֹ וְבְּרִמְזוֹ פִּדְוֹ  
 דּוֹרָר וְרִמְזוֹ וְדִבֶּר־רִמְזוֹ בְּרִמְזוֹ שֶׁל־רִמְזוֹ  
 וְדִבֶּר־רִמְזוֹ וְרִמְזוֹ וְדִבֶּר־רִמְזוֹ לְרִמְזוֹ וְדִבֶּר  
 וְרִמְזוֹ רִמְזוֹ רִמְזוֹ דַּעַב־פְּבֵרִים רְעֵל־עֲבֵר רְעֵל־עֲבֵר  
 אֲלִימֵדָּ: בְּרִמְזוֹ רִמְזוֹ בְּרִמְזוֹ שֶׁל־רִמְזוֹ דַּעַב־  
 פְּבֵרִים. וְדָר.

---

דַּעַב־פְּבֵרִים דַּעַב־פְּבֵרִים דַּעַב־פְּבֵרִים.

אֲדִי! בְּרִמְזוֹ רִמְזוֹ רְעֵל־עֲבֵר, בְּרִמְזוֹ וְדִבֶּר: בְּרִמְזוֹ  
 רְעֵל־עֲבֵר, רְעֵל־עֲבֵר וְרִמְזוֹ רִמְזוֹ רְעֵל־עֲבֵר דַּעַב־פְּבֵרִים.

רְעֵל־עֲבֵר־רִמְזוֹ, וְעֹלָמוֹ לְרִמְזוֹ בְּזֵדְוֹ דַּעַב־שָׁמַיִם  
 בְּרִמְזוֹ רְעֵל־עֲבֵר־רִמְזוֹ דַּעַב־פְּבֵרִים, רִמְזוֹ וְרִמְזוֹ רְעֵל־עֲבֵר־  
 רִמְזוֹ דַּעַב־שָׁמַיִם בְּרִמְזוֹ רִמְזוֹ, בְּלַבַּיטִי וְרִמְזוֹ.

σ<δγρσ ρρΛΓρσζ ρβε∇.ρ"ρ9Δ.σx,  
Γε ρρ Δζζζ βρ9 ρ' < ρ4∇.ρρ9Δ.σx; ρζ  
ρ4λσζ βρ"ζρ Δ.ζ, Γε βρ9 βρ4δ.Πρζ.

4∇.ρ"Γ' ΔL, ∇^ΛUρL' ρ'ζ β3.σ σΠ-  
Vρ"ρ9Γεζ. ∇Γ.

4∇.ρΓ' β"ρζ° σσρ"Δβ.ζ (Λ^δ σ ζ;  
Γζ)(Δ.ζ ζζ Γε Γρ∇. ΔU Δρ'x, Γε βρ9  
σζβλΔ.ζ ρρ ΛΓ^ρ(Δ.ρ' ζρ"Δ)Δ.σx.

Δρδx Λβ ρ"UΛζΠLσ ρΠ(ρ∇.Δ.ζ ΔC  
ρσζβλ9Δ.σx Δ"ρ, Γε ρLζρ(ζσ ρ4∇.ρ"ρ-  
9Δ.ε ΔC Δρ'x, ∇δρ Λβ Γζβσ σ"ζx ΔΛΔ.ζ  
Δ^ΛΓx, ∇δU Λβ ρρΔ.ρCρ∇.ΓC, Δρρ ρδρ^  
ρ'ζ β3.σ : Δ^ΛΓx Γε Δρρ Γε β"ρζ° 9β:  
ΔC βΔζρ, ρζ ρΠVρ"Uε βρ9 Γε βρ9.  
ε)(Δ.ζ Δ! UVρ"ρ9ζ ∇^ΛUρ"L' ρδρ^  
ρ'ζ β3.σ. ∇Γ.

---

ΔΔ.ρ^ ΔCζΓ"∇Δ.ζ ΔζΓ"∇ ρζβζ ρρ  
ΔρρΔU. Δ9ρ4 < ΔζΓ"∇Δ.σx.

∇βΔ.ζ ΔUρΓ, Δ! UVρ"ρ9ζ, ρρ Γρ-  
Δ.ερ(ζζ) ΔL ρρρβC LζρΔ.σx Δρ Δ>" ρ'9-

9Δ.σ<sup>x</sup>,  
; ρ<sub>ν</sub>  
; ρ<sub>ν</sub>  
σ<sub>π</sub>-  
; ρ<sub>ν</sub>  
ε βρ<sub>9</sub>

Δ<sup>ν</sup> Δ<sub>κ</sub>  
Δ<sub>π</sub>-  
Δ<sub>λ</sub>Δ<sup>ν</sup>  
ρ<sub>δ</sub>ρ<sup>ν</sup>  
ε<sup>ν</sup> ρ<sub>6</sub>:  
βρ<sub>9</sub>.  
ρ<sub>δ</sub>ρ<sup>ν</sup>

ρ<sub>δ</sub>  
; ρ<sup>ν</sup>

Δ·σ<sup>x</sup> Ḷβ ρ<sub>ν</sub> ρ<sub>β</sub>ḶΔ·Ḷ<sup>ν</sup>Ḷ<sup>ν</sup> Ḷ<sup>ν</sup> Ḷ<sup>ν</sup> Ḷ<sup>ν</sup> Ḷ<sup>ν</sup> Ḷ<sup>ν</sup>  
Δ·σ<sup>x</sup>.

ρ<sub>δ</sub>ρ<sub>δ</sub>ΔḶΔ<sup>ν</sup> Δ<sup>ν</sup>Δ<sup>ν</sup> ρ<sub>δ</sub>Ḷ<sup>ν</sup>ρ<sup>ν</sup>ρ<sup>ν</sup>Ḷ<sup>ν</sup>Ḷ<sup>ν</sup>Ḷ<sup>ν</sup>, Ḷ<sup>ν</sup>  
Ḷ<sup>ν</sup>σ ρ<sub>δ</sub>Ḷ<sup>ν</sup>Ḷ<sup>ν</sup>Ḷ<sup>ν</sup> Δ<sup>ν</sup>Ḷ<sup>ν</sup> Δ<sup>ν</sup>Ḷ<sup>ν</sup> β<sup>ν</sup>ρ<sub>ν</sub>Ḷ<sup>ν</sup>Ḷ<sup>ν</sup>  
Ḷ<sup>ν</sup>Ḷ<sup>ν</sup>, ρ<sub>δ</sub>Ḷ<sup>ν</sup>Ḷ<sup>ν</sup> Ḷ<sup>ν</sup> ρ<sub>δ</sub>Ḷ<sup>ν</sup>Ḷ<sup>ν</sup>Ḷ<sup>ν</sup> Δ<sup>ν</sup>Ḷ<sup>ν</sup>Ḷ<sup>ν</sup>, Ḷ<sup>ν</sup>Ḷ<sup>ν</sup>  
Ḷ<sup>ν</sup>Ḷ<sup>ν</sup>Ḷ<sup>ν</sup>Ḷ<sup>ν</sup>Ḷ<sup>ν</sup>Ḷ<sup>ν</sup> Ḷ<sup>ν</sup>Ḷ<sup>ν</sup>Ḷ<sup>ν</sup> ρ<sub>δ</sub>Ḷ<sup>ν</sup>Ḷ<sup>ν</sup>, Ḷ<sup>ν</sup>Ḷ<sup>ν</sup> Ḷ<sup>ν</sup>  
β<sup>ν</sup>ρ<sub>ν</sub> σ<sub>π</sub>Ḷ<sup>ν</sup>Ḷ<sup>ν</sup>Ḷ<sup>ν</sup>Ḷ<sup>ν</sup>Ḷ<sup>ν</sup>. Ḷ<sup>ν</sup>.

---

Δ<sup>ν</sup>Ḷ<sup>ν</sup> Δ<sub>κ</sub>Ḷ<sup>ν</sup>Ḷ<sup>ν</sup>Ḷ<sup>ν</sup> Δ<sub>κ</sub>Ḷ<sup>ν</sup>Ḷ<sup>ν</sup> Ḷ<sup>ν</sup>Ḷ<sup>ν</sup>  
ρ<sub>δ</sub>Ḷ<sup>ν</sup>Ḷ<sup>ν</sup>Ḷ<sup>ν</sup>Ḷ<sup>ν</sup> Δ<sub>κ</sub>Ḷ<sup>ν</sup>Ḷ<sup>ν</sup>Ḷ<sup>ν</sup>Ḷ<sup>ν</sup>.

Δ! ρ<sub>δ</sub>Ḷ<sup>ν</sup> Ḷ<sup>ν</sup> Ḷ<sub>λ</sub>Δ<sup>ν</sup>Ḷ<sup>ν</sup> β<sup>ν</sup>ρ<sub>ν</sub>Ḷ<sup>ν</sup>Ḷ<sup>ν</sup>, ρ<sub>δ</sub>  
Ḷ<sup>ν</sup>Ḷ<sup>ν</sup>Ḷ<sup>ν</sup> σ<sub>β</sub>Δ<sup>ν</sup>Ḷ<sup>ν</sup>ρ<sub>δ</sub>ρ<sup>ν</sup>ρ<sub>δ</sub> Ḷ<sup>ν</sup>Ḷ<sup>ν</sup> ρ<sub>6</sub>: β<sub>κ</sub> Ḷ<sup>ν</sup>-  
ρ<sub>β</sub>ρ<sup>ν</sup>Ḷ<sup>ν</sup>Ḷ<sup>ν</sup> Δ<sup>ν</sup>- β<sub>δ</sub>ρ<sub>δ</sub>; ρ<sub>ν</sub> β<sub>κ</sub>Ḷ<sup>ν</sup>Ḷ<sup>ν</sup>  
σ<sub>υ</sub>Δ<sup>x</sup> Ḷ<sup>ν</sup>ρ<sub>δ</sub> ρ<sub>δ</sub>Ḷ<sup>ν</sup>Ḷ<sup>ν</sup>Ḷ<sup>ν</sup>Ḷ<sup>ν</sup> Ḷ<sup>ν</sup>Ḷ<sup>ν</sup>, ρ<sub>δ</sub>Ḷ<sup>ν</sup>-  
ρ<sub>δ</sub>Ḷ<sup>ν</sup>ρ<sub>δ</sub>Ḷ<sup>ν</sup>Ḷ<sup>ν</sup>Ḷ<sup>ν</sup>Ḷ<sup>ν</sup>Ḷ<sup>ν</sup>Ḷ<sup>ν</sup> Δ<sup>ν</sup>Ḷ<sup>ν</sup> β<sup>ν</sup>ρ<sub>ν</sub> ρ<sub>δ</sub>Ḷ<sup>ν</sup>-  
Ḷ<sup>ν</sup>Ḷ<sup>ν</sup> Ḷ<sup>ν</sup>Ḷ<sup>ν</sup>Ḷ<sup>ν</sup>Ḷ<sup>ν</sup>Ḷ<sup>ν</sup>Ḷ<sup>ν</sup>, Δ<sup>ν</sup>Ḷ<sup>ν</sup> Ḷ<sup>ν</sup>Ḷ<sup>ν</sup>ρ<sub>δ</sub>ρ<sub>δ</sub> ρ<sub>δ</sub>-  
Ḷ<sup>ν</sup>Ḷ<sup>ν</sup>Ḷ<sup>ν</sup>Ḷ<sup>ν</sup>Ḷ<sup>ν</sup> Ḷ<sup>ν</sup>Ḷ<sup>ν</sup> Ḷ<sup>ν</sup>Ḷ<sup>ν</sup>Ḷ<sup>ν</sup>Ḷ<sup>ν</sup>Ḷ<sup>ν</sup> Ḷ<sup>ν</sup>Ḷ<sup>ν</sup>Ḷ<sup>ν</sup>  
σ<sub>β</sub>ρ<sub>ν</sub>Ḷ<sup>ν</sup>Ḷ<sup>ν</sup> Ḷ<sup>ν</sup> Ḷ<sup>ν</sup>Ḷ<sup>ν</sup>ρ<sub>δ</sub>ρ<sub>δ</sub>, Δ<sup>ν</sup>Ḷ<sup>ν</sup> Ḷ<sup>ν</sup>Ḷ<sup>ν</sup>Ḷ<sup>ν</sup>Ḷ<sup>ν</sup>Ḷ<sup>ν</sup>  
ρ<sub>δ</sub>Ḷ<sup>ν</sup>Ḷ<sup>ν</sup> Ḷ<sup>ν</sup>Ḷ<sup>ν</sup>Ḷ<sup>ν</sup>. Ḷ<sup>ν</sup>.

W. M. WATTS, CROWN COURT, TEMPLE BAR.

BAR.

