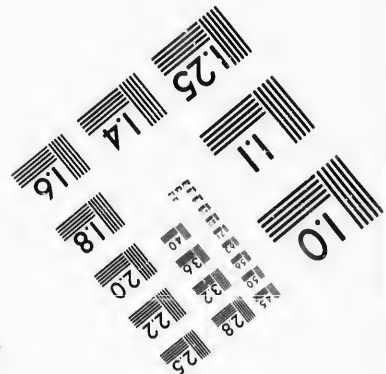
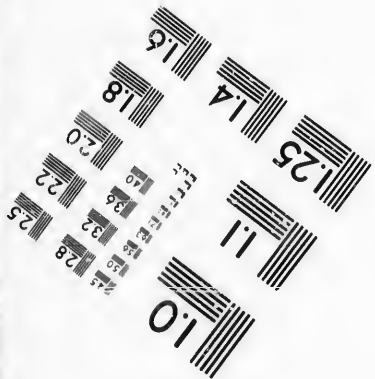
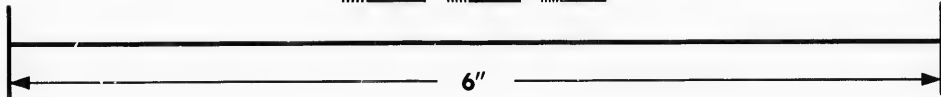
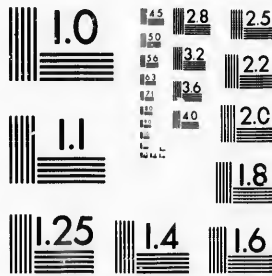


**IMAGE EVALUATION
TEST TARGET (MT-3)**



**Photographic
Sciences
Corporation**

23 WEST MAIN STREET
WEBSTER, N.Y. 14580
(716) 872-4503

15
16
18
20
22
25
28
32
36
40

**CIHM/ICMH
Microfiche
Series.**

**CIHM/ICMH
Collection de
microfiches.**



Canadian Institute for Historical Microreproductions / Institut canadien de microreproductions historiques

10
15
20
25
30
35
40

© 1987

Technical and Bibliographic Notes/Notes techniques et bibliographiques

The Institute has attempted to obtain the best original copy available for filming. Features of this copy which may be bibliographically unique, which may alter any of the images in the reproduction, or which may significantly change the usual method of filming, are checked below.

L'Institut a microfilmé le meilleur exemplaire qu'il lui a été possible de se procurer. Les détails de cet exemplaire qui sont peut-être uniques du point de vue bibliographique, qui peuvent modifier une image reproduite, ou qui peuvent exiger une modification dans la méthode normale de filmage sont indiqués ci-dessous.

- Coloured covers/
Couverture de couleur
- Covers damaged/
Couverture endommagée
- Covers restored and/or laminated/
Couverture restaurée et/ou pelliculée
- Cover title missing/
Le titre de couverture manque
- Coloured maps/
Cartes géographiques en couleur
- Coloured ink (i.e. other than blue or black)/
Encre de couleur (i.e. autre que bleue ou noire)
- Coloured plates and/or illustrations/
Planches et/ou illustrations en couleur
- Bound with other material/
Relié avec d'autres documents
- Tight binding may cause shadows or distortion
along interior margin/
La reliure serrée peut causer de l'ombre ou de la
distorsion le long de la marge intérieure
- Blank leaves added during restoration may
appear within the text. Whenever possible, these
have been omitted from filming/
Il se peut que certaines pages blanches ajoutées
lors d'une restauration apparaissent dans le texte,
mais, lorsque cela était possible, ces pages n'ont
pas été filmées.
- Additional comments:/
Commentaires supplémentaires:

- Coloured pages/
Pages de couleur
- Page damaged/
Pages endommagées
- Pages restored and/or laminated/
Pages restaurées et/ou pelliculées
- Pages discoloured, stained or foxed/
Pages décolorées, tachetées ou piquées
- Pages detached/
Pages détachées
- Showthrough/
Transparence
- Quality of print varies/
Qualité inégale de l'impression
- Includes supplementary material/
Comprend du matériel supplémentaire
- Only edition available/
Seule édition disponible
- Pages wholly or partially obscured by errata
slips, tissues, etc., have been refilmed to
ensure the best possible image/
Les pages totalement ou partiellement
obscurcies par un feuillet d'errata, une pelure,
etc., ont été filmées à nouveau de façon à
obtenir la meilleure image possible.

This item is filmed at the reduction ratio checked below/
Ce document est filmé au taux de réduction indiqué ci-dessous.

10X	14X	18X	22X	26X	30X
<input type="checkbox"/>	<input type="checkbox"/>	<input type="checkbox"/>	<input checked="" type="checkbox"/>	<input type="checkbox"/>	<input type="checkbox"/>
12X	16X	20X	24X	28X	32X

The copy filmed here has been reproduced thanks to the generosity of:

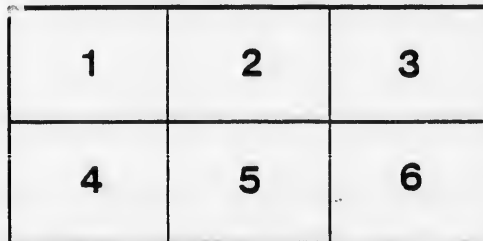
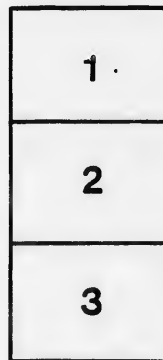
D.B. Weldon Library
University of Western Ontario
(Regional History Room)

The images appearing here are the best quality possible considering the condition and legibility of the original copy and in keeping with the filming contract specifications.

Original copies in printed paper covers are filmed beginning with the front cover and ending on the last page with a printed or illustrated impression, or the back cover when appropriate. All other original copies are filmed beginning on the first page with a printed or illustrated impression, and ending on the last page with a printed or illustrated impression.

The last recorded frame on each microfiche shall contain the symbol \rightarrow (meaning "CONTINUED"), or the symbol ∇ (meaning "END"), whichever applies.

Maps, plates, charts, etc., may be filmed at different reduction ratios. Those too large to be entirely included in one exposure are filmed beginning in the upper left hand corner, left to right and top to bottom, as many frames as required. The following diagrams illustrate the method:



L'exemplaire filmé fut reproduit grâce à la générosité de:

D.B. Weldon Library
University of Western Ontario
(Regional History Room)

Les images suivantes ont été reproduites avec le plus grand soin, compte tenu de la condition et de la netteté de l'exemplaire filmé, et en conformité avec les conditions du contrat de filmage.

Les exemplaires originaux dont la couverture en papier est imprimée sont filmés en commençant par le premier plat et en terminant soit par la dernière page qui comporte une empreinte d'impression ou d'illustration, soit par le second plat, selon le cas. Tous les autres exemplaires originaux sont filmés en commençant par la première page qui comporte une empreinte d'impression ou d'illustration et en terminant par la dernière page qui comporte une telle empreinte.

Un des symboles suivants apparaîtra sur la dernière image de chaque microfiche, selon le cas: le symbole \rightarrow signifie "A SUIVRE", le symbole ∇ signifie "FIN".

Les cartes, planches, tableaux, etc., peuvent être filmés à des taux de réduction différents. Lorsque le document est trop grand pour être reproduit en un seul cliché, il est filmé à partir de l'angle supérieur gauche, de gauche à droite, et de haut en bas, en prenant le nombre d'images nécessaire. Les diagrammes suivants illustrent la méthode.



LIST OF VOTERS

FOR THE

Township of Lobo

FOR THE

YEAR 1898.



STRATHROY :
EVANS BROTHERS, PUBLISHERS.
1898.

SCHEDULE OF POST OFFICES.

- | | |
|------------------|--------------------------|
| 1. Komoka. | 26. Ailsa Craig. |
| 2. Sand Beach. | 27. Fernhill. |
| 3. London. | 28. Delaware. |
| 4. Lobo. | 29. Ilderton. |
| 5. Ealing. | 30. Deso Soto. |
| 6. London West. | 31. Nairn. |
| 7. Poplar Hill. | 32. Toronto. |
| 8. Strathroy. | 33. Arkona. |
| 9. Chicago. | 34. Graying, Minn. |
| 10. Hyde Park. | 35. Chatham. |
| 11. Crescent. | 36. Falkirk. |
| 12. Ferguson. | 37. Denfield. |
| 13. Cleveland. | 38. Telfer. |
| 14. West Beech. | 39. St. Louis, Missouri. |
| 15. Coldstream. | 40. Penetanguishene. |
| 16. Forest. | 41. Detroit. |
| 17. Alberta. | 42. Springfield. |
| 18. Minneapolis. | 43. St. Thomas. |
| 19. Luan. | 44. Unknown. |
| 20. Vanneck. | 45. Fanshaw. |
| 21. Ivan. | 46. Aberfeldy. |
| 22. Amiens. | 47. Brantford. |
| 23. Alvinston. | 48. South Dakota. |
| 24. Duncrief. | 49. Bella, M. |
| 25. Rodney. | |

VOTERS' LIST, 1898, Municipality = of = Lobo.

Polling Sub-Division No 1,

Comprising Lots 9 to the Townline between the Townships of Lobo and London,
inclusive, in the 1st, 2nd, 3rd, 4th and 5th Concessions, and the
South half of the aforesaid lots in the 6th Concession.

PART I.—Persons Entitled to Vote at BOTH Municipal Elections and Elections to the Legislative Assembly.

Jur.	No. on Roll.	NAME.	LOT.	Concession or Street.	Other Description.	P.O.	Occupation.
J375		Alder, John	s w pt 13	4	M F and O.	4	Farmer
	233	Alway, Geo C	n e pt 13	2	M F and O.	12	Farmer
J234		Alway, Robt E	n e pt 13	2	M F and O.	12	Farmer
J278		Alway, Reuben	pt 9	3	M F and O.	1	Farmer
	43	Bowman, Wm	pt n hf 9	1	M F and O.	1	Farmer
J341		Bowman, George	s e qr 10	4	M F and O.	4	Farmer
	302	Bowman, James	s e qr 10	4	M F and O.	4	Farmer
J340		Branton, Geo M	s w qr 10	4	M F and O.	4	Farmer
J354		Brown, Donald A	s hf 12 and o p	4	M F and O.	4	Farmer
	389	Cameron, John J	pt e pt 15	4	M F and T.	12	Laborer
J 60		Campbell, John S	pt s pt 10	1	M F and O	1	Farmer
J 61		Campbell, Wm	pt s pt 10	1	M F and T.	1	Farmer

Polling Sub-Division No. 1.

Jur.	No. on Roll.	NAME.	LOT.	Concession or Street.	Other Description.	P.O.	Occupation.
	62	Campbell, Wm R.	pt s pt 10	1	M F & F S.	1.	Farmer
J423		Campbell, Duncan P.	n hf 10	5	M F and O.	4.	Farmer
	434	Carmichael, Duncan	s w qr 13	5	M F and O.	4.	Farmer
J422		Caverhill, Walter A.	s hf 10	5	M F and O.	4.	Farmer
J284		Challoner, Jas H.	s e pt 11 and o p	3	M F and O.	1.	Farmer
J383		Coghlan, Richard	w pt 15	4	M F and T.	12.	Farmer
J442		Colvin, Alex	n hf 16 and o p	5	M F and O.	4.	Farmer
J492		Colvin, Wm	s w pt 12 and o p	6	M F and O.	4.	Farmer
J493		Colvin, Wm R.	s w pt 12 and o p	6	M F and O.	4.	Farmer
J 75		Comfort, Wallace	pt s pt 12 and o p	1	M F and O.	12.	Farmer
J 76		Comfort, Francis	pt 9 and o p	1	M F and O.	12.	Farmer
J367		Crapp, Thos.	pt n hf 13	4	M F and T.	4.	Farmer
	308	Crow, Wm	pt gore 15	3	M F and T.	12.	Mason
	481	Denton, William	s pt s hf 10	6	M F and O.	4.	Laborer
J 38		Doan, Geo A.	s pt 9 and o p	1	M F, O & T.	1.	Farmer
	39	Doan, Israel C.	s pt 9	1	M F and O.	1.	Farmer
	40	Doan, Edward D.	s pt 9	1	M F and O.	1.	Farmer
	45	Doan, Alex	pt n hf 9	1	M F and O.	1.	Farmer
	209	Doan, Israel H.	w pt s hf 10	2	M F and O.	1.	Farmer
	360	Eddington, Wm A.	Main 3,4,5, Lobo Vil & o p	4	M F and O.	4.	Painter
	212	Edwards, Henry	n hf 10 and o p	2	M F and O.	1.	Farmer

Polling Sub-Division No. 1.

Jun.	No. on Roll	NAME.	LOT.	Concession or Street.	Other Description.	P.O.	Occupation.
J213		Edwards, Jas G W.	on hf 10 and o p	2	M F and O.	1.	Farmer
	288	Edwards, Rich M.	s pt 12 and o p	3	M F and O.	4.	Farmer
J289		Edwards, Chas C.	pt n hf 12 and o p	2	M F and O.	4.	Farmer
	279	Edwards, Jeremiah.	s pt 10 and o p	3	M F, & J O.	1.	Farmer
J280		Edwards, Geo F.	e pt 9 and o p	3	M F & J O.	1.	Farmer
J283		Edwards, Arthur E.	n w qr 11	3	M F and T.	4.	Farmer
J281		Edwards, Albert F.	s e pt 14	4	M F and O.	4.	Farmer
	508	Ferguson, Duncan.	s w qr 17 and o p	6	M F and O.	4.	Farmer
	509	Ferguson, Arch.	s w qr 17 and o p	6	M F & F S.	4.	Farmer
	510	Ferguson, John.	s w qr 17 and o p	6	M F & F S.	4.	Farmer
	46	Ferguson, Robt.	n pts 9 and 10	1	M F and O.	4.	Farmer
J 47		Ferguson, Daniel.	n pts 9 and 10 and o p	1	M F, T & O.	4.	Farmer
J 48		Ferguson, James.	n pts 9 and 10 and o p	1	M F, T & O.	4.	Farmer
J314		Ferguson, John.	n pt 14 and o p	3	M F and O.	12.	Farmer
	307	Ferguson, Andrew.	gore 15 and o p	3	M F and O.	12.	Farmer
J309		Ferguson, Chas H.	gore 15 and o p	3	M F & J O.	12.	Farmer
J237		Fonger, John.	s s pt 13	2	M F and O.	12.	Farmer
	238	Fonger, Angus.	s pt 13	2	M F & F S.	12.	Farmer
J291		Freed, Rev Wm.	n cor s hf 12	3	M F and T.	4.	Minister
J292		Graham, Alexander.	s w qr 13 and o p	3	M F and O.	4.	Farmer
J296		Graham, George.	s e qr 13	3	M F and O.	12.	Farmer

Polling Sub-Division No. 1.

Jur.	No. on Roll.	NAME.	LOT.	Concession or Street.	Other Description.	P.O.	Occupation.
J	49	Graham, Peter L.	e Main 8 & 9, Lobo Vil & o p.	4	M F and O.	4	M D
	424	Graham, Neil	n pt 11	5	M F & J O.	4	Farmer
J425		Graham, Allan D.	n pt 11	5	M F & J O.	4	Farmer
J376		Grant, Alex	n pt 14	4	M F and O.	4	Farmer
	427	Gray, Angus	n e qr 9 and o p	5	M F and O.	4	Farmer
	371	Harris, William	pt 13	4	M F and O.	4	Laborer
	372	Harris, Russell	pt 13	4	M F and O.	4	Laborer
	68	Harrison, Thos	n w qr 12	1	M F and T	1	Laborer
J217		Harrison, Geo H	s e qr 11 and o p	2	M F & J O.	12	Farmer
J218		Harrison, Franklin	s e qr 11 and o p	2	M F & J O.	12	Farmer
J	74	Harrison, John W.	n pt 12 and o p	1	M F and O.	12	Farmer
J219		Harrison, James	s e qr 11 and o p	2	M F & J O.	12	Farmer
J220		Harrison, Chas M.	gore 14 and o p	2	M F & J O.	12	Farmer
	222	Harrison, Benj L.	s w qr 12 and o p	2	M F and O.	12	Farmer
J223		Harrison, Benj J.	s w qr 12 and o p	2	M F & J O.	12	Farmer
J224		Harrison, Alfred G.	s w qr 12 and o p	2	M F & J O.	12	Farmer
J225		Harrison, Godfrey	s w qr 12 and o p	2	M F & J O.	12	Farmer
J370		Hodgson, Thomas	pt n hf 13	4	M F and O.	4	Gentle'man
J287		Hollad, John	n pt s hf 12	3	M F and O.	4	Mason
J432		Irvine, John	s w pt 12	5	M F and O.	4	Carpent'r
	433	Irvine, Joshua	n pt 12	5	M F and O.	4	Farmer

Polling Sub-Division No. 1.

Jur.	No. on Roll.	NAME.	LOT.	Concession or Street.	Other Description.	P.O.	Occupation.
J227		Johnson, Colin . . . n e pt 12	2	M F and O	21	Teacher	
	418	Johnson, John . . . s w qr 9 and o p	5	M F and O	4	Farmer	
J230		Jury, Amos H. . . s e qr 12 and o p	2	M F & J O	12	Farmer	
	232	Keirstead, Wm F. . s w pt n hf 13	2	M F and O	4	Farmer	
J298		Knight, Andrew J. s pt 14	3	M F and O	12	Farmer	
J 55		Ling, Edwin n pt 11 and o p	1	M F and O	12	Farmer	
J 56		Ling, Edwin B. . . n pt 11 and o p	1	M F and O	12	Farmer	
J228		Mitchell, John H. . pt 13 and o p	4	M F and O	12	Farmer	
J347		Mitchell, Geo F . . s hf 11	4	M F and T	4	Farmer	
J365		Mouger, Geo H . . pt 12 and 13	4	M F and O	4	H Keeper	
	494	Moore, Joseph . . s e pt 12	6	M F and O	4	Farmer	
	495	Moore, George . . s e pt 12	6	M F and O	4	Farmer	
J235		Morris, John K . . n pt s hf 13	2	M F and O	10	Farmer	
J361		Murch, Geo. e Main st, 4,5,6 & 7, L Vil & o p	4	M F and O	4	Blacks'ith	
	362	Murch, Wm H. . Lobo Vill & Main st, 7 & o p	4	M F and O	4	Blacks'ith	
J439		McArthur, Jas A . . n hf 14	5	M F and O	4	Farmer	
J440		McArthur, John H. . n hf 14	5	M F and O	4	Farmer	
J501		McArthur, Colin. s w pt 14 and o p	6	M F and O	4	Farmer	
J502		McArthur, Alex . . s w pt 14	6	M F and O	4	Farmer	
	506	McCall, Duncan . . s hf 16 and o p	6	M F and O	4	Farmer	
	479	McColl, Wm . . . s hf 9	6	M F & J O	4	Farmer	

Polling Sub-Division No. 1.

No. on Roll.	NAME.	LOT.	Concession or Street.	Other Description.	P.O.	Occupation.
480	McCull, Archibald.	s hf 9	6	M F & J O.	4.	Farmer
437	McGugan, Archibald.	s hf 14 and o p	5	M F and O.	4.	Farmer
438	McGugan, Arch	C s e qr 13 and o p	5	M F and O.	4.	Farmer
121	McIntyre, Hugh.	n hf 10 and o p	3	M F and O.	4.	Farmer
439	McIntyre, Hngh jr.	s e qr 9	4	M F and O.	4.	Farmer
438	McIntyre, Jas C.	n w qr 9	4	M F and O.	4.	Farmer
437	McIntyre, Nichol.	s e pt 14	4	M F and O.	4.	Farmer
439	McIntyre, Duncan N.	n hf 13 and o p	5	M F & J O.	4.	Farmer
435	McIntyre, Alex A.	n hf 13 and o p	5	M F & J O.	4.	Farmer
443	McIvor, Hugh.	gore 17	5	M F and O.	20.	Farmer
444	McIvor, Wm C.	gore 17	5	M F and O.	20.	Farmer
420	McKellar, Geo W.	s pt 10	2	M F and O.	1.	Farmer
426	McKellar, Archibald.	s cor n hf 11 and o p	5	M F and O.	4.	Farmer
489	McKellar, Alex	s pt 11 and o p	6	M F and O.	4.	Farmer
490	McKellar, Peter G.	s pt 11 and s e pt 17	6	M F and O.	4.	Farmer
441	McNeil, Alex	s w qr 15	5	M F and O.	4.	Farmer
58	Nellis, Frank L	pt 9 and 10	1	M F and O.	1.	Farmer
59	Nellis, George	pt 9 and 10	1	M F and T.	1.	Farmer
366	Norton, Nathan	pt n hf 13 and o p	4	M F and T.	4.	H Keeper
130	Noxel, Michael	s w pt 9	2	M F and T.	1.	Farmer
70	Oliver, Wm	s w pt 11	1	M F and O.	1.	Miller

Polling Sub-Division No. 1.

Occupation.	Jur.	No. on Roll.	NAME.	LOT.	Concession or Street.	Other Description.	P.O.	Occupation.
Farmer		73	Oliver, John M	pt e pt 12	1	M F and O	1	Farmer
Farmer		J 42	Pew, Edwin	pt s pt 9, 10	1	M F and O	1	Farmer
Farmer		J356	Powell, Thos R	n n pt 12	4	M F and O	4	Wag Mak
Farmer		357	Powell, Thos	pt n pt 12	4	M F and O	4	Gentle'an
Farmer		J 78	Pulham, Francis H	s pt gore 13 and o p	1	M F and O	1	Farmer
Farmer		J431	P'incombe, James	s hf 11	5	M F and O	4	Farmer
Farmer		J275	Quarrie, Frederiek	s w qr 9	3	M F and T	1	Farmer
Farmer		310	Quinnie, Daniel	pt 14	3	M F and O	12	Laborer
Farmer		J445	Robson, Reginal	s hf 16	5	M F and O	4	Farmer
Farmer		385	Scott, Arthur	e pt 15	4	M F and T	12	Farmer
Farmer		J386	Scott, Andrew H	e pt 15	4	M F and T	12	Farmer
Farmer		J387	Scott, Wm B	e pt 15	4	M F and T	12	Farmer
Farmer		J358	Sha p, Richard	pt 12	4	M F and O	4	Merehant
Farmer		J359	Sharpe, Walter	pt 12	4	M F and O	4	Student
Farmer		276	Smith, Henry	n hf 9	3	M F and O	4	Farmer
Farmer		J277	Smith, Thos H	n hf 9	3	M F and T	4	Farmer
Keeper		305	Smith, Jacob	e pt 14	8	M F and T	12	Gentle'an
Farmer		482	Smith, Wm B	s pt s hf 10	6	M F and T	4	Laborer
Farmer		J336	Stalwood, Chas	pt 9 and o p	4	M F and O	4	Farmer
Miller		337	Stalwood, Chas jr	pt 9 and o p	4	M F & F S	4	Farmer

Polling Sub-Division No. 1.

Jur.	No. on Roll.	NAME.	LOT.	Concession or Street.	Other Description.	P.O.	Occupation.
J343		Staples, Fred G.	n hf 10	4	M F and T.	4.	Farmer
		52 Steels, Wm	pt n pt 9	1	M F and O.	1.	Farmer
		53 Steels, Walter	pt n pt 9	1	M F and O.	1.	Farmer
		54 Steele, Henry	pt n pt 9	1	M F and O.	1.	Farmer
		348 Steel, Daniel	n hf 11 and o p	4	M F and O.	4.	Farmer
J351		Steel, Daniel A	n hf 11 and o p	4	M F and O.	4.	Farmer
J352		Steeles, Herbert R.	n hf 11 and o p	4	M F and O.	4.	Farmer
J353		Steele, Wellington L.	n hf 11 and o p	4	M F and O.	4.	Farmer
J 63		Sulston, Wm	pt s pt 10	1	M F and O.	1.	Farmer
		64 Sulston, Thomas	pt s pt 10	1	M F & F S.	1.	Farmer
		65 Sulston, Percival	pt s pt 10	1	M F & F S.	1.	Farmer
		66 Sulston, Wm jr	pt s pt 10	1	M F & F S.	1.	Farmer
		659 Taylor, James	Lobo Vil 1 and 2 and o p	4	M F and O.	4.	Laborer
J226		Thody, William	pt 11	2 & 3.	M F and T.	1.	Farmer
J377		Tuckey, James A.	s w pt 14 and o p	4	M F and O.	4.	Farmer
		231 Walburg, John	n w pt 13	2	M F and O.	12.	Farmer
J 77		Wilkie, George	pt cen pt 12	1	M F and O.	4.	Farmer

PART II.—Persons Entitled to Vote at Municipal Elections ONLY.

374	Alder, Thos	s w pt 13	4	Owner	12.	Farmer
389	Arrand, Robert	gore 16 and o p	4	Owner	12.	Farmer

Polling Sub-Division No. 1.

Jur.	No. on Roll	NAME.	LOT.	Concession or Street.	Other Description.	P.O.	Occupation.
	384	Boston, Robert	e pt 15	4	Owner	3	Jail Gov'r
	344	Cohoe, Elizabeth A.	s hf 11	4	Joint O	6	Widow
	345	Cohoe, Benj L.	s hf 11	4	Joint O	17	Minister
	346	Cohoe, Josiah J.	s hf 11	4	Joint O	44	Farmer
	69	Comfort, Jessie	pt s pt 10	1	Owner	1	Widow
	282	Edwards, Rich W.	n w qr 11	3	Owner	14	Farmer
	67	Fletcher, Wm	s e cor 9 and o p	2	Owner	3	Janitor
	215	Hambly, Sarah A.	n hf 11 and o p	2	Owner	1	Widow
	419	Johnson, Sarah	n w and s e qr 9	5	Owner	4	Spinster
	229	Jury, Elizabeth	s e qr 12	2	Owner	18	Widow
	209	Knight, Wm	s pt 14	3	Owner	17	Farmer
	301	Knight, Walter	s pt 14	3	Owner	39	Farmer
	297	Knight, Jane	s pt 14	3	Owner	12	Widow
	300	Knight, Robert	s hf 14	3	Owner	34	Farmer
	50	McArthur, Maggie A.	pt 15	6	Owner	4	Spinster
	511	McCull, Jennet	n e qr 15	5	Owner	4	Spinster
	368	McBain, Christy	pt 13	4	Owner	4	Spinster
	369	McBain, Annie	pt 13	4	Owner	4	Spinster

Polling Sub-Division No. 1.

Jur.	No. on Roll.	NAME.	LOT.	Concession or Street.	Other Description.	P.O.	Occupation.
	214	Harrison, Franklin	pt s pt 11	2	M F and H	1	Gentle'an
	373	Henderson, George	pt n hf 13	4	M F	4	S Teacher
	446	Long, David	s hf 16	5	M F	4	Laborer
	380	Mortimore, Wm J. n e	pt 14	4	M F	12	Minister
	72	Morrow, Joseph	s hf 12	1	M F	1	Laborer
	221	Murray, James	s cor 9	2	M F and H	1	Gentle'an
	216	McLean, Dougald	s pt 11	2	M F	1	Laborer
	312	McIntyre, Peter	pt 14	3	M F and H	12	Gentle'an
	355	Parson, Frederick	n e qr 12	3	M F	4	Laborer
	296	Pfanner, John	cen pt 11	3	M F and H	4	Butcher
	293	Quinnie, Robert	s w pt 13	3	M F	4	Laborer
	311	Russel, Robert	gone 15	3	M F	12	Labourer
	351	Smith, Wm B	pt n hf 12	4	M F	4	Laborer
	441	Steel, Richard	8 1/2 11	6	M F	4	Labourer
	267	Wellsman, Henry	s pt 9	3	M F	1	Laborer
	313	Weyonth, Frank	pt gone 15	3	M F	12	Labourer

Polling Sub-Division No. 2,

Comprising Lots 1 to 8, inclusive, in the 1st, 2nd, 3rd, 4th and 5th Concessions.

PART I.—Persons Entitled to Vote at BOTH Municipal Elections and Elections to the Legislative Assembly.

Jur.	No. on Roll.	NAME.	LOT.	Concession or Street.	Other Description.	P.O.	Occupation.
	394	Alway, Frederick	s pt 1 and 2	5	M F & F S.	1.	Farmer
J	82	Barber, Wm	pt s pt 2	2	M F and O.	1.	Farmer
J	87	Barber, Albert	pt n hf 3	2	M F and O.	1.	Farmer
	19	Blanchard, John	s pt 3 and o p	1	M F and O.	1.	Farmer
J	21	Blanchard, George	s pt 3 and 4	1	M F and O.	1.	Farmer
J	335	Brayford, Wm	n w qr 7, n e pt 6 & o p	3	M F and O.	1.	Farmer
	159	Brown, Thomas	Kom S S bk N, 8	2	M F and O.	1.	Laborer
J	409	Brown, James	n hf 5	5	M F and O.	4.	Farmer
	160	Brown, James	Kom S S bk N, 8	2	M F and O.	1.	Laborer
J	402	Campbell, Donald M	n hf 3	5	M F & J O.	7.	Farmer
J	403	Campbell, Arch L	n hf 3	5	M F & J O.	7.	Farmer
J	404	Campbell, Dougald L	n hf 3	5	M F & J O.	7.	Farmer
J	405	Campbell, John L	n hf 3	5	M F & J O.	7.	Farmer
J	406	Campbell, Norman L	n hf 3	2	M F & J O.	1.	Farmer
J	399	Campbell, Duncan D	s hf 3 and o p	5	M F and O.	1.	Farmer
J	400	Campbell, Ezra	s hf 3	5	M F and O.	1.	Farmer

Polling Sub-Division No. 2.

Juc	No. on Roll.	NAME.	LOT.	Concession or Street.	Other Description.	P.O.	Occupation.
J401		Campbell, Malcolm . . .	hf 3 and o p	5	M F and O	1	Farmer
J207		Campbell, Arch	hf 8 and o p	2	M F and O	1	Farmer
J208		Campbell, Alfred J . . .	hf 8 and o p	2	M F and O	1	Farmer
J318		Campbell, Donald	pt 2	4	M F and O	1	Farmer
125		Clendening, Wm	Well 7 and o p	2	M F and T	1	Merchant
239		Craven, George	hf 1	3	M F and O	1	Farmer
340		Craven, John A	hf 1	3	M F & F S	1	Farmer
341		Craven, Geo F	hf 1	3	M F & F S	1	Farmer
79		Dunn, Wm	s qr 1	2	M F and O	1	Farmer
80		Dunn, Edwin	s qr 1	2	M F and O	1	Farmer
188		Edwards, Fred J	w cor 6	2	M F and O	1	Farmer
200		Finch, James	G T R prop	2	M F and T	1	Sta Agent
J407		Fletcher, Neil	hf 4 and o p	5	M F and O	1	Farmer
182		Fonger, Jefferson	Blk G	2	M F and O	1	Laborer
138		Foster, Fuller C	blk R, 1,2,3,4,5, Kom	2	M F and O	1	Laborer
247		Frank, John B C	s pt 3	3	M F and O	1	Farmer
J249		Frank, Richard C	pt s hf 3	3	M F and O	1	Farmer
J250		Frank, Chas J	pt s hf 3	3	M F and O	1	Farmer
J248		Frank, Wm S	pt s hf 3	3	M F and O	1	Farmer
134		George, Charles	Komoka blk S, 1 and 2	2	M F and T	1	School T

Concessions.
 Elections
 Occupation.
 Farmer
 Farmer
 Farmer
 Farmer
 Farmer
 Laborer
 Farmer
 Laborer
 Farmer
 Farmer
 Farmer
 Farmer
 Farmer

Jur.	No. on Roll.	NAME.	LOT.	Concession or Street.	Other Description.	P.O.	Occupation.
	88	Graham, Matthew	pt s pt 4	2	M F and O.	1.	Farmer
J	89	Graham, John	pt s pt 4	2	M F and O.	1.	Farmer
	172	Graham, Daniel	Kom blk I, 1,2,3 and o p	2	M F and H	1	Laborer
J	319	Graham, Dougald W.	3 and o p	4	M F and O.	1.	Farmer
J	325	Graham, Donald F.	s hf 5	4	M F and O.	1.	Farmer
J	327	Graham, Alex F.	s hf 6	4	M F and O.	1.	Farmer
	329	Graham, Alexander	n e qr 8 and o p	3	M F and O.	4.	Farmer
J	328	Graham, Alex A	s pt 7	4	M F and O.	1.	Farmer
J	330	Graham, John	n w qr 7	4	M F and O.	4.	Farmer
J	324	Gray, Malcolm	n hf 5	4	M F and O.	1.	Farmer
	158	Hair, Wm	blk K, 10, 11, 12	2	M F and T.	1.	Laborer
J	258	Henderson, Edward	n hf 5 and o p	3	M F and O.	1.	Farmer
J	243	Hicks, Harry	2 and o p	3	M F and T.	1.	Farmer
	244	Hicks, Joseph	2 and o p	3	M F and T.	1.	Farmer
J	245	Hicks, Joseph jr.	2 and o p	3	M F and T.	1.	Farmer
J	246	Hicks, Wm	2 and o p	3	M F and T.	1.	Farmer
	152	Hord, Edmund J.	blk L, 5, 6, 7, and o p	2	M F and O.	1.	Bag Mas
	153	Hord, Robt F.	blk L, 5, 6, 7, and o p	2	M F and O.	1.	Laborer
	154	Hord, Albert G	blk L, 5, 6, 7, and o p	2	M F and O.	1.	Laborer
	155	Hord, Lewis G.	blk K, 1,2,16,17,18 & o p	2	M F and O.	1.	Laborer
J	7	Janes, John B.	pt 2, 3 and 1	1	M F and O.	1.	Farmer

Polling Sub-Division No. 2.

Occupation.	No. on Roll.	NAME.	LOT.	Concession or Street.	Other Description.	P.O.	Occupation.
Farmer	J417	Johnson, Thos.	w hf 8	5	M F and O.	4.	Farmer
Farmer	J397	Keir, James	s e pt 2	5	M F and O.	1.	Farmer
Laborer	398	Keir, Dougald.	s e pt 2	5	M F & F S.	1.	Farmer
Farmer	390	Lamont, John.	n hf 1 and o p	5	M F & J O.	1.	Farmer
Farmer	J391	Lamont, Peter.	n hf 1 and o p	5	M F and O.	1.	Farmer
Farmer	J392	Lamont, John C	s hf 1 and o p	4	M F and O.	1.	Farmer
Farmer	113	Lofthouse, Geo	Well 12	2	M F and O.	1.	Shoema'er
Farmer	J428	Livingston, Thomas.	n w qr 8	3	M F and T.	1.	Farmer
Laborer	126	Lince, James	Well 53 and o p	2	M F and O.	1.	Gentle'an
Farmer	J429	Livingston, Arch jr.	n w qr 8	3	M F and T.	1.	Farmer
Farmer	J133	Luce, David	Kom blk S, 1 and 2	2	M F and O.	1.	Carpent'r
Farmer	178	Luce, Jos D.	bks 7 and 2, all	2	M F and O.	1.	Laborer
Farmer	179	Luce, Chas H	bks 1 and 2	2	M F and O.	1.	Farmer
Farmer	266	Luce, John H	pt s w qr 6	3	M F and O.	1.	Farmer
Farmer	J135	Mathieson, David.	blk S, w hf 3 and o p	2	M F and O.	1.	Laborer
Bag Mas	136	Mathieson, James.	blk S, w hf 3	2	M F and T.	1.	Laborer
Laborer	161	Morrison, Angus P.	Kom SS, bk O, 7 & o p	2	M F and O.	1.	Laborer
Laborer	162	Morrison, Neil.	Kom SS, bk C, all but 7 & 3	2	M F and T.	1.	Laborer
Laborer	163	Morrison, Alex.	Kom, bk B, all but 3	2	M F and T.	1.	Laborer
Farmer	254	McArthur, Dougal.	n hf 3	3	M F and O.	1.	Farmer

Polling Sub-Division No. 2.

No. on Roll	NAME.	LOT.	Concession or Street.	Other Description.	P.O.	Occupation.
J395	McBain, Peter L.	pt s w qr 2 and o p5M F & J O..	1..	Farmer
J149	McCaffery, James.	Kom bk L, 2, 3, 4 2M F and T..	1..	Hotel K'r
12	McDonald, Ewen.	pt 2 and 31M F and O..	1..	Farmer
13	McDonald, Kenneth.	pt 2 and 31M F and O..	1..	Farmer
J 26	McDougald, James.	..n pt 5 and 61M F and O .	1..	Farmer
118	McDougall, Alex.	Well 25 and 26 and o p	..2M F and O .	1..	Laborer
119	McDougall, David A.	Well 49, 50 and o p	..2M F and O..	1..	Laborer
120	McDougall, Thos J.	..e hf 4 and o p2M F and O..	1..	Laborer
J321	McDougall, Malcolm.	..s hf 4 and o p4M F and O..	1..	Farmer
103	McIntyre, Donald.	Kom SS, bk R, 6, 7, 8, 9 & o p	..2M F and O .	4..	Laborer
J255	McIntyre, Peter A.	..n hf 4 and o p3M F and O .	1..	Farmer
J256	McIntyre, Peter Alex.	..n hf 4 and o p3M F and O .	1..	Farmer
J259	McIntyre, Alex	..n pt s pt 53M F and O..	1..	Farmer
J129	McKellar, John A.	..s w pt 9 and o p2M F and O..	1..	Laborer
168	McKellar, Dougald P.	Kom bk D, 1 22M F and T..	1..	Laborer
145	McKellar, Peter	Kom SS, bk L, 2 and 18.	..2M F and O..	1..	Laborer
169	McKellar, Duncan R.	Kom bk D, 1, 2 2M F and T..	1..	Laborer
146	McKellar, Malcolm A.	Kom SS, bk L, 2 & 18.	..2.M F and O .	1..	Wag Mak
147	McKellar, Arch D.	pt s hf 3 and o p2M F and O..	1..	Laborer
J411	McKinley, John	..w hf 7 and o p5M F and O..	1..	Farmer
J412	McKinley, Colin.	pt n hf 7 and o p5M F and O..	1..	Farmer
J414	McLachlan, Donald	..e hf 7 and o p5M F & J O..	1..	Farmer

Polling Sub-Division No. 2.

Occupation.	Jur.	No. on Roll.	NAME.	LOT.	Concession or Street.	Other Description.	P.O.	Occupation.
Farmer	J	415	McLachlan, John A.	e hf 7 and o p	5	M F & J O.	1.	Farmer
Hotel K'r	J	416	McLachlan, Arch J.	e hf 7 and o p	5	M F & J O.	1.	Farmer
Farmer		194	McLellan, Arch D.	pt s hf 6 and o p	2	M F and O.	1.	Farmer
Farmer		157	McMurphy, John.	bk K, 10, 11, 12 and o p	2	M F and T.	1.	Laborer
Farmer	J	317	McMurphy, Dougald.	pt 1 and 2	4	M F and T.	1.	Farmer
Laborer		180	Nash, John	Kom SS, bk 1 and 2	2	M F and T.	1.	Laborer
Laborer	J	83	Noxel, William	n e qr 1	2	M F and O.	1.	Farmer
Laborer	J	84	Noxel, George	n e qr 1	2	M F and O.	1.	Farmer
Farmer	J	34	Parsons, Walter	7 and 8	1	M F and T.	1.	Farmer
Laborer	J	33	Parsons, David C.	7 and 8	1	M F and O.	1.	Farmer
Farmer	J	37	Parsons, Ernest	7 and 8	1	M F and O.	1.	Farmer
Farmer	J	35	Parsons, Kilbert.	8 and 7	1	M F and T.	1.	Farmer
Laborer		132	Payne, William	pt e pt 4	2	M F and T.	1.	Laborer
Laborer		137	Pender, Lawrence.	Kom SS, bk S, 3, 4, 5, 6 & op	2	M F and O.	1.	Laborer
Laborer	J	93	Pfanner, James	s e cor 4	2	M F and O.	1.	H Keeper
Laborer		261	Pinyon, Thomas.	Kom D S, 4, 5, 6 & o p	3	M F and O.	1.	Farmer
Vag Mak	J	253	Revell, Isaac	s hf 4	3	M F and T.	1.	Farmer
Laborer		90	Robinson, David.	n w pt 4 and o p	2	M F and O.	1.	Gentle'an
Farmer	J	201	Robinson, Robt	n e pt 6 and o p	2	M F and O.	1.	Farmer
Farmer	J	115	Robinson, Wm.	s pt n hf 7 and o p	2	M F and O.	1.	Farmer
Farmer	J	269	Robinson, Frank.	s w pt 7 and o p	3	M F and O.	1.	Farmer

Polling Sub-Division No. 2.

Dist.	No. on Roll.	NAME.	LOT.	Concession or Street.	Other Description.	P.O.	Occupation.
	114	Rowland, Lewis.	Well, w hf 29	2	M F and O.	1.	Bridge B
J	6	Ryan, William	een pt 2 and 3	1	M F and O	1	Miller
	91	Scott, William	n cor 4	2	M F and T.	1	Laborer
	92	Scott, Wm J.	n cor 4	2	M F and T.	1	Laborer
	173	Secynes, John	Well K, 4, 7 and o p	2	M F and O.	1	Laborer
	22	Seabrook, Arthur	s pt 5 and 6 and o p	1	M F and O.	1	Farmer
J	23	Seabrook, Percy B.	s pt 5 and 6 and o p	1	M F and O.	1	Farmer
J	24	Seabrook, Francis H.	s pt 5 and 6	1	M F and O.	1	Farmer
J	25	Seabrook, Edwin R.	s pt 5 and 6	1	M F and O.	1	Farmer
J	195	Shiple, John	n pt s hf 6 and o p	2	M F and O.	1	H Keeper
J	196	Shiple, Wm B.	pt s hf 6 and o p	2	M F and O	1	Farmer
J	2	Shoults, A.	n w pt 1	1	M F and O.	1	Farmer
J	106	Sinclair, John	Well 16, 31, 32 and o p	2	M F and O.	1	Blacks'ith
	143	Sleath, James	bk M, lot 2	2	M F and O.	1	Wag Mak
	267	Small, Robt A.	e pt 7	3	M F and O.	1	Farmer
J	14	Smith, Agnes P	n e pt 3	1	M F and O.	1	Farmer
	15	Smith, David S	n pt 4	1	M F and O.	1	Farmer
J	85	Smith, David N.	pt s hf 3	2	M F and O.	1	Farmer
J	16	Smith, Leonard R	n pt 4	1	M F and O.	1	Farmer
J	17	Smith, Jas H	s w cor 4 and o p	2	M F and O	1	Farmer
J	141	Smith, Arch B.	Kom SS, bk M, 3, 4 and o p	2	M F and O.	1	Blacks'ith

Polling Sub-Division No. 2.

Occupation.	Jur.	No. on Roll.	NAME.	LOT.	Concession or Street.	Other Description.	P.O.	Occupation.
Bridge B		142	Smith, Arch E.	Kom SS, bk M, 3, 4 and o p	2	M F and O.	1.	Blacks'ith
Miller		J199	Smith, Allan M.	s pt 6	2	M F and O.	1	Farmer
		J204	Smith, Wellington.	w pt s hf 7	2	M F and T.	1.	Farmer
Laborer		94	Spence, Smith.	s pt 4	2	M F and O.	1.	Blacks'ith
Laborer		95	Spence, James.	s pt 4	2	M F and O.	1.	Blacks'ith
Laborer		96	Spence, Thos.	s pt 4	2	M F and T.	1.	Plasterer
Farmer		97	Spence, Albert.	pt s pt 4	2	M F and T.	1.	Laborer
Farmer		J315	Stanley, Thomas.	n w qr 1	4	M F and T.	1.	Farmer
Farmer		175	Steels, Daniel.	Kom bk E, 4	2	M F and T.	1	Laborer
Farmer		260	Steel, Geo.	Kom DS, 1,2,3,109, 110, 111	2	M F and O.	1.	Laborer
H Keeper		183	Stilson, Leonard.	Kom SS, bk A, 9 to 16, incl' ve.	2	M F and O.	1.	Laborer
Farmer		J331	Stonehouse, Egerton R.	n hf 3 and o p	4	M F and O.	4.	Farmer
Farmer		J332	Stonehouse, Wesley E.	n hf 8 and o p	4	M F O & T.	4.	Farmer
Blacks'ith		J 99	Sutherland, George.	Kom SS, bk R, 6,7,8&op.	2	M F & J T.	1.	Farmer
Wag Mak		J101	Sutherland, Neil.	Kom SS, bk R, 6,7,8&op.	2	M F & J T.	1.	Farmer
Farmer		J100	Sutherland, Henry.	Kom SS, bk R, 6,7,8 & o p.	2	M F & J T.	1.	Farmer
Farmer		J150	Sutherland, James.	Kom SS, bk N and o p.	2	M F and O.	1.	Laborer
Farmer		184	Swales, John	bk A, 9 to 16	2	M F and T.	1.	Laborer
Farmer		J410	Tuekey, Chas	s hf 6	5	M F and O.	4.	Farmer
Farmer		205	Turnbull, Thos T.	s pt 7, 8	2	M F & J O.	1.	Farmer
Farmer		J203	Turnbull, John	s pt 7	2	M F and O.	1.	Farmer
Blacks'ith		J206	Turnbull, Robt B.	s pt 7 and 8	2	M F & J O.	1.	Farmer

Polling Sub-Division No. 2.

Jur.	No. on Roll.	NAME.	LOT.	Concession or Street.	Other Description.	P.O.	Occupation.
J263		Turnbull, Thos G.	D, s pt 81, 82, 83, 84	2	M F and O.	1.	Grain Br
	165	Watson, William	Kom SS, bk K, 13	2	M F and O.	1.	Laborer
J271		Waugh, Edward	s e qr 8 and o p	3	M F and O.	1.	Farmer
J272		Waugh, Chris	s e qr 8 and o p	3	M F and O.	1.	Farmer
J274		Waugh, Wm R	n hf 9 and o p	2	M F and O.	1.	Farmer
	191	Wernham, Jos jr.	Kom bk F, 1,2,3 and o p	2	M F and O.	1.	Laborer
	190	Wernham, Chas	Kom SS, bk H, 6,7,8 & o p	2	M F and O.	1.	Laborer
	192	Wernham, John W	bk E and o p	2	M F and O.	1.	Laborer
J	3	Westbrook, Rich	n pt 1	1	M F and O.	1.	Farmer
J	4	Westbrook, Rich jr.	n pt 1	1	M F and O.	1.	Farmer
J	5	Westbrook, Albert	r e pt 1	1	M F and O.	1.	Farmer
J109		Wilcott, Wm B	Well 14, 15	2	M F and T.	1.	Merchant
J262		Wooleock, Geo	Kom D S, 4, 5 and o p	2	M F and T.	1.	Farmer

PART II.—Persons Entitled to Vote at Municipal Elections ONLY.

	29	Aeres, Henry W	s e cor 4 and o p	1	Owner	28.	Farmer
	393	Alway, Elizabeth	s pt 1, 2	5	Owner	1.	Widow
	30	Arthur, William	s e cor 4	1	Owner	28.	Farmer
	86	Barber, Elizabeth	pt n pt 2 and 3	1	Owner	1.	Farmer
	197	Beckwith, M A	Well 4, 19 and o p	2	Owner	32.	Widow
	20	Blanchard, Jas	s pt 3 and 4	1	Owner	3.	Farmer

Polling Sub-Division No. 2.

Occupation.	Jur.	No. on Roll.	NAME.	LOT.	Concession or Street.	Other Description.	P.O.	Occupation.
Grain Br		27	Blosdale, Frank	s e cor 4	1	Owner	28	Farmer
Laborer		102	Branton, Wm	Kom, bk P, 9, 10	2	Owner	2	Farmer
Farmer		170	Campbell, Jessie	Kom SS, bk T, 6, 7, 8	2	Gwner	1	Spinster
Farmer		9	Cleghorn, Edward	pt 2 and 3	1	Owner	3	Mgr gas wks
Farmer		128	Chalmers, Mary	Well 36, 52	2	Owner	16	Widow
Laborer		116	Cochran, Letitia	Well 28	2	Owner	1	Widow
Laborer		8	Cowan, D J	pt 2 and 3	1	Owner	3	Merchant
Laborer		251	Cross, Andrew	s w pt 3 and o p	3	Owner	11	Grain M't
Farmer		108	Dark, Adeline	Well G S, 14 and 15	2	Owner	1	Widow
Farmer		10	Duffield, James C	pt 2 and 3	1	Owner	3	Merchant
Farmer		176	Ferguson, Elizabeth	bk 8	2	Owner	1	Widow
Merchant		122	Ferguson, Jennie C	Well 30	2	Owner	1	Spinster
Farmer		185	Finch, Ann J	bk D, 1, 2, bk H, 5	2	Owner	1	Widow
LY.		181	Fonger, Mrs Elizabeth	Kom SS, bk G	2	Owner	1	Widow
Farmer		139	Foster, Fuller L	Kom SS, bk, S and o p	2	Owner	1	Laborer
Widow		123	Geddes, Eliza	Well 2, 3, 7, 8, 9, 24	2	Owner	1	Widow
Farmer		81	Hartley, George	s e pt 1	2	Owner	28	Farmer
Farmer		11	Hobbs, T S	pt 2 and 3	1	Owner	3	Merchant
Widow		151	Hord, Sarah J	Kom SS, bk L, 5, 6, 7 & o p	2	Owner	1	Widow
Farmer		104	Hume, Robert J	Kom bk O, 1, 2 and o p	2	Owner	9	Farmer

Polling Sub-Division No. 2.

Jur.	No. on Roll.	NAME.	LOT	Concession or Street.	Other Description.	P.O.	Occupation.
	105	Lamont, Mary	Well 13, and e hf 29	2	Owner	1	Widow
	333	Marsh, James	s e qr 8	5	Owner	41	Laborer
	459	McArthur, Mary	s w qr 4	5	Joint O	1	Spinster
	458	McArthur, Maggie	s w qr 4	5	Joint O	1	Spinster
	460	McArthur, Catharine	s w qr 4	5	Joint O	1	Spinster
	461	McArthur, Lena	s w qr 4	5	Joint O	1	Spinster
	396	McBain, Dougal	n hf 2 and o p	5	Owner	1	Farmer
	131	McDonald, Jessie	pt e pt 4	2	Owner	43	Widow
	322	McDougall, Catharine	n hf 4	4	Owner	1	Widow
	193	McDougall, Nancy	Kom SS, bk F, 1, 2, 3 & o p	Owner	8	Widow	
	28	McEwan, John	s e cor 4	1	Owner	28	Farmer
	189	McIntyre, Annie	Kom SS, bk C, 7 and o p	2	Owner	1	Widow
	124	McKellar, Wm	Well, 7 and pt 20	2	Owner	3	Merchant
	174	McLachlan, Flora	Kom SS, bk F, 4	2	Owner	1	Spinster
	156	McMurphy, Isabella	bk N, 3, 4, 5, 6, 7	2	Owner	1	Spinster
	252	McTaggart, John	s pt 4	3	Owner	44	Grain M't
	316	McTaggart, Donald	n e qr 1 and w pt 2	4	Owner	8	Gentle'an
	144	Oliver, Mary A	Kom, bk M, 5	2	Owner	1	Widow
	36	Parsons, Wm G	7 and 8	2	Tenant	1	Agent

Occupation.	Jur. No. on Roll.	NAME.	LOT.	Concession or Street.	Other Description.	P.O.	Occupation.
Widow	140	Robins, Mary	bk M, 1	2	Owner	1	Widow
Laborer	264	Rundle, Daniel F.	Kom D S, 275, 276 & o p.	2	Owner	23	Laborer
Farmer	270	Scott, Henry	ne pt 6	3	Owner	38	Farmer
Farmer	1	Smith, Chas A.	n w pt 1	1	Owner	5	Farmer
Farmer	32	Waddell, Wm.	s pt 5	1	Tenant	1	Farmer
PART III.—Persons Entitled to Vote at Elections to the Legislative Assembly ONLY.							
Laborer	202	Cook, Chas E	ne pt 6	2	M F	1	Laborer
Laborer	326	Doan, Henry	s hf 5	4	M F	1	Laborer
Laborer	320	Forbes, George	3	4	M F	1	Laborer
Laborer	112	Gibson, Cyrneus A.	Well, lots 14 and 15	2	M F	1	Laborer
Laborer	323	Hill, John	n hf 4	4	M F	1	Laborer
Laborer	265	Joyce, William	D S, 283 and o p	2	M F and H.	1	Laborer
Laborer	257	Joyce, David	Well, 11 and 27	2	M F and H.	1	Laborer
Laborer	117	Joyce, Robert	Well, 11 and 27	2	M F	1	Laborer
Laborer	127	Leitch, Christopher	Well, 52, 36	2	M F	1	Laborer

Polling Sub-Division No. 2.

Jur.	No. on Roll	NAME.	LOT.	Concession or Street.	Other Description.	P.O.	Occupation.
	111	Lewis, Wm A ... Well, 14 and 15	2	M F	1	Laborer	
	110	Lewis, Andrew A . Well, 14 and 15	2	M F	1	Laborer	
	408	Lindsay, David . n hf 4	5	M F	1	Laborer	
	198	Lowe, Charles.... Well 4, 19	2	M F	1	Painter	
	413	McKellar, John D. . w hf 7	5	M F	1	Laborer	
	268	Onion, Wm J . . . s e qr 7	3	M F	1	Laborer	
	166	Stewart, Wm sr . . G T R property, G W Div		M F and T.	1	Laborer	
	167	Stewart, Wm jr . . G T R property, G W Div		M F and T.	1	Laborer	
	186	Wilson, John Kom, blk 15, 9 and 10	2	M F and O.	15	Laborer	
	187	Wilson, Isaac Kom, blk 15, 9 and 10	2	M F and H	1	Laborer	
	148	Wigley, John Kom, bk K, 1	2	M F and H.	1	Merchant	
	107	Wilkins, John.... Well 16, 31, 32	2	M F	1	Blacks'ith	
	31	Woodhull, Chas W. . s e cor 4	2	M F	1	Cheese M	

Polling Sub-Division No. 3,

Comprising Lots Nos. 1 to 6, inclusive, in the 6th, 7th, 8th, 9th and 10th Concessions, and Lots Nos. 1 to 7, inclusive, in the 11th, 12th and 13th Concessions.

PART I.—Persons Entitled to Vote at BOTH Municipal Elections and Elections to the Legislative Assembly.

Jur.	No. on Roll.	NAME.	LOT.	Concession or Street.	Other Description.	P.O.	Occupation.
	864	Aehes, Joseph s w pt 4	4	11	M F and O . .	7	Farmer
	865	Aehes, Byron s w pt 4	4	11	M F and O . .	7	Farmer
	782	Aitkins, Joseph . . . s hf n hf 1	1	10	M F and O . .	7	Farmer
	534	Blair, Chas e pt s hf 6	6	7	M F and O . .	7	Farmer
	589	Barelay, Eli R. . . . pt e pt 4, 5 and o p	4, 5	8	M F and O . .	7	Merchant
	591	Barelay, Geo E . . w pt 4 and o p	4	9	M F and O . .	7	Farmer
	590	Barelay, Clarence H. . w pt 4 and o p	4	9	M F and O . .	7	Farmer
	597	Barelay, Alvin pt w hf 5	5	8	M F and T . .	7	Laborer
	860	Barfett, Chas n w pt 1	1	11	M F and O . .	22	Farmer
	603	Barnes, James pt 5	5	8	M F and O . .	7	Laborer
	781	Campbell, Arch J. . . s hf 1	1	10	M F and O . .	22	Farmer
	712	Campbell, James . . s hf 5 and o p	5	9	M F and O . .	7	Farmer
	713	Campbell, John H. . . s hf 5 and o p	5	9	M F and O . .	7	Farmer
	1038	Chapman, John . . . n hf 3	3	13	M F and O . .	27	Farmer

Polling Sub-Division No. 3.

Jur.	No. on Roll	NAME.	LOT.	Concession or Street.	Other Description.	P.O.	Occupation.
J1040	Chapman, John J.	n hf 3	13	M F and O	27	Farmer
J1039	Chapman, Wm	n hf 3	13	M F and O	27	Farmer
J1041	Chapman, Lyman	n hf 3	13	M F and O	27	Farmer
875	Chlew, John	e hf 6	11	M F and T	27	Farmer
J876	Chlew, Maitland	e hf 6	11	M F and T	27	Farmer
J877	Chlew, Wm	e hf 6	11	M F and T	27	Farmer
J1047	Crawford, John	s hf 5	13	M F and O	27	Farmer
J788	Cutler, Jeremiah O.	s w pt 2	10	M F and O	7	Farmer
J789	Cutler, Hiram	s w pt 2	10	M F and O	7	Farmer
J790	Cutler, Harvey	s w pt 2	10	M F and O	7	Farmer
J799	Cutler, Edwin	s pt 3	10	M F and O	7	Farmer
J957	Daniels, Elias	n hf 7	12	M F and T	27	Farmer
J708	Davis, Rev G B.	pt w hf 5	9	M F and T	7	Minister
J527	Fletcher, Malcolm	n hf 5 and o p	7	M F and O	7	Farmer
J1030	Fonger, Henry	n hf 1	13	M F and T	27	Farmer
956	Fortner, Henry	n hf 7	12	M F and O	27	Farmer
J862	Fraser, Henry	e hf 3	11	M F and O	27	Farmer
J863	Fraser, Hugh	e hf 3	11	M F and O	7	Farmer
607	Glass, Matthew J.	pt 5	8	M F and O	7	M D
J622	Gray, Alexander	s pt 6	8	M F and O	15	Farmer
J623	Gray, Dougald G.	s e qr 6	8	M F and O	15	Farmer

Polling Sub-Division No. 3.

Occupation.	Jur.	No. on Roll.	NAME.	LOT.	Concession or Street.	Other Description.	P.O.	Occupation.
Farmer		J614	Hannacher, Isaac	w pt 5 and o p	8	M F and T.	7.	Farmer
Farmer		J885	Hambly, Wm	s hf 7 and o p	11	M F, O & T.	7.	Farmer
Farmer		J878	Harris, Hiram	n e qr 7 and o p	11	M F and O.	27.	Farmer
Farmer		J784	Harris, Benj B	n w pt 2	10	M F and O.	7.	Farmer
Farmer		J785	Harris, Wilfred E	n w pt 2	10	M F and O.	7.	Farmer
Farmer		578	Hunt, Edward L	s w pt 1 and o p	8	M F and O.	7.	Farmer
Farmer		J579	Hunt, Aaron L	s e pt 2 and o p	8	M F and O.	7.	Farmer
Farmer		J952	Kennings, Geo sr	n w qr 6	12	M F and T.	27.	Farmer
Farmer		J953	Kennings, Geo jr	n w qr 6	12	M F and T.	27.	Farmer
Farmer		J954	Kennings, Andrew	n w qr 6	12	M F and T.	27.	Farmer
Farmer		J576	Ladell, Fred M	n hf 2	8	M F and O.	7.	Farmer
Minister		J577	Ladell, Wm F	n hf 2	8	M F and O.	7.	Farmer
Farmer		J454	Lamont, Hector	s hf 3	6	M F and O.	1.	Farmer
Farmer		J450	Lamont, Hugh	s hf 2	6	M F and O.	1.	Farmer
Farmer		J783	Linton, Isaac	s hf n hf 1	10	M F and T.	7.	Farmer
Farmer		1043	Matthews, Thos	pt n hf 4	13	M F and O.	27.	Blacks'th
Farmer		J533	Mitchell, John	s w qr 6 and o p	7	M F and O.	7.	Farmer
1 D		946	Moore, Wm	s hf 4	12	M F and O.	27.	Farmer
Farmer		J941	McArthur, Laehlan	n e pt 3	12	M F and O.	27.	Farmer
Farmer		J940	McArthur, Angus	n w pt 3	12	M F and O.	27.	Farmer

Jur.	No. on Roll.	NAME.	LOT.	Concession or Street.	Other Description.	P.O.	Occupation.
	942	McArthur, Wm A . . . n e pt 3	3	12	M F & F S.	27	Farmer
	698	McArthur, John . . . 2	2	9	M F & J O.	7	Farmer
	3699	McArthur, Dougal . . . 2	2	9	M F & J O.	7	Farmer
	701	McArthur, Wm 2	2	9	M F & J O.	7	Invalid
	616	McColl, Thos pt w pt 5	5	8	M F and O.	7	Gentle'an
	3696	McGugan, Duncan . . . n pt 1	1	9	M F and O.	7	Farmer
	31035	McGugan, John . . . s hf 3	3	13	M F and T.	27	Farmer
	528	McIntyre, Malcolm A . . s hf 5 and o p	5	7	M F and O.	7	Farmer
	3529	McIntyre, Peter M . . s hf 5 and o p	5	7	M F and O.	7	Farmer
	3530	McIntyre, Arch F . . s hf 5 and o p	5	7	M F and O.	1	Farmer
	3531	McIntyre, James A . . s hf 5 and o p	5	7	M F and O.	7	Farmer
	3455	McIntyre, Donald . . n hf 4	4	6	M F and O.	7	Farmer
	3456	McIntyre, Duncan D . . n hf 4	4	6	M F and O.	7	Farmer
	3457	McIntyre, Peter J . . n hf 4	4	6	M F and O.	7	Farmer
	3463	McIntyre, Duncan . . n hf 5	5	6	M F and O.	7	Farmer
	3585	McIntyre, Arch . . . s hf 4 and n w qr 4	4	8	M F and O.	7	Farmer
	3586	McIntyre, John . . . s hf and n w qr 4	4	8	M F and T.	7	Farmer
	3588	McKay, Alexander . . n e pt 4	4	8	M F and O.	7	Farmer
	3587	McKay, Francis . . n pt w qr 4 and o p	4	8	M F and O.	7	Farmer
	706	McKay, Nathan . . . c pt 4	4	9	M F and O.	7	Farmer
	3937	McKay, Urias A . . n e qr 1	1	12	M F and O.	27	Farmer
	707	McKay, Albert E . . e hf 4	4	9	M F and O.	7	Farmer

Jur.	No. on Roll.	NAME.	LOT.	Concession or Street.	Other Description.	P.O.	Occupation.
27		Farmer					
950		McKay, John s hf 3	12	M F and O.		27	Farmer
447		McKellar, John . . n hf 1	6	M F and O.		7	Farmer
448		McKellar, Daniel A. . n hf 1	6	M F and O.		7	Farmer
602		McKellar, Neil pt n e hf 5	8	M F and O.		7	Gentle'an
242		McKinnon, Roderick . . pt 5 and o p	8	M F and O.		7	Gentle'an
3872		McKinnon, David R. . n hf 4	11	M F and O.		27	Farmer
514		McLean, Duncan sr. . l and o p	7	M F and O.		7	Farmer
515		McLean, Duncan jr. . l and o p	7	M F and O.		7	Farmer
517		McLean, Robt. . . . l and o p	7	M F and O.		7	Farmer
516		McLean, John l and o p	7	M F and O.		7	Farmer
518		McLean, Arch. l and o p	7	M F and O.		7	Farmer
519		McLean, Daniel . . l and o p	7	M F and O.		7	Farmer
510		McLean, James . . s eor 5	9	M F and O.		7	Laborer
1057		McLellan, Duncan . . n e qr 7 and o p	13	M F and O.		27	Farmer
1058		McLellan, Hugh . . n e qr 7 and o p	13	M F and O.		27	Farmer
592		McNeil, James B. . pt w pt 5	8	M F and O.		7	Blacks'ith
593		McNeil, James W. . pt w pt 5	8	M F and O.		7	Laborer
594		McNeil, John W . pt w pt 5	8	M F and O.		7	Laborer
595		McNeil, Charles A. . pt w pt 5	8	M F and O.		7	Laborer
618		McVicar, John e hf 5 and o p	8	M F and O.		7	Farmer
619		McVicar, Jas D . . e hf 5 and o p	8	M F and O.		7	Vet Sur
620		McVicar, Arthur . . e hf 5 and o p	8	M F and O.		7	Farmer

Polling Sub-Division No. 3.

Jur.	No. on Roll.	NAME.	LOT.	Concession or Street.	Other Description.	P.O.	Occupation.
	625	McVicar, Peter J.	s cor s e qr 6	8	M F and O.	7.	Laborer
	949	Neff, Ambrose	s hf 5	12	M F and T	27	Farmer
	955	Neff, Emerson	s hf 7	12	M F and O.	27	Farmer
	1049	Newell, Cyrus	pt n hf 5	13	M F and O.	27	Farmer
	1048	Owens, David R.	n w pt 5	13	M F and O.	27	Merchant
	947	Patterson, Dougal	n hf 5	12	M F and O.	27	Farmer
	525	Paul, William	s hf 4	7	M F and O.	7.	Farmer
	523	Paul, Malcolm	n hf 4	7	M F and O.	7.	Farmer
	524	Paul, William	n hf 4	7	M F and O.	7.	Farmer
	1045	Perry, John	n hf s hf 4	13	M F and O.	27	Farmer
	1046	Perry, Geo B	n hf s hf 4	13	M F and O.	27	Farmer
	451	Pincombe, George	n hf 2	6	M F and O.	7.	Farmer
	522	Pinecombe, John jr.	s hf 3	7	M F and O.	7.	Farmer
	453	Pinecombe, Richard	n hf 3	6	M F and O.	7.	Farmer
	574	Pinecombe, William	w pt 1	8	M F and O.	7.	Farmer
	573	Pincombe, John sr.	w pt 1	8	M F and O.	7.	Farmer
	881	Post, Edwin	n pt 7 and 8 and o p	11	M F and O.	27	Farmer
	884	Post, Wm D.	n pt 8 and o p	11	M F and T.	27	Farmer
	883	Post, Alva E.	n pt 7 and 8 and o p	11	M F and T.	27	Farmer
	601	Raynold, James S.	pt w hf 5	8	M F and T.	27	Laborer

Polling Sub-Division No. 3.

P.O.	Occupation.	Jur. No. on Roll.	NAME.	LOT.	Concession or Street.	Other Description.	P.O.	Occupation.
7	Laborer	621	Robinson, Bert.	pt e hf 5	8	M F and O	7	Farmer
27	Farmer	J464	Sinclair, Duncan.	s hf 5	6	M F and O	4	Farmer
27	Farmer	J583	Sinclair, Archibald.	3	8	M F and O	7	Farmer
27	Farmer	J584	Sinclair, Colin F.	3	8	M F and O	7	Farmer
27	Merchant	154	Sinclair, Archibald.	6 and o p	6	M F and O	4	Farmer
27	Farmer	J467	Sinclair, Laughlin	6 and o p	6	M F and O	4	Farmer
27	Farmer	J466	Sinclair, Arch R	6 and o p	6	M F and O	4	Farmer
7	Farmer	944	Smith, Leonard	s hf 2 and o p	13	M F and O	27	Farmer
7	Farmer	J1033	Smith, Judson	s hf 2 and o p	13	M F and T	27	Farmer
7	Farmer	J945	Smith, Burton	s pt 3	12	M F and T	27	Farmer
27	Farmer	794	Springstead, John G.	pt s hf 2	10	M F and T	7	Farmer
27	Farmer	800	Stoner, John	n hf 4	10	M F and O	27	Farmer
7	Farmer	J1042	Stoner, Ephraim.	n hf 4	13	M F and O	27	Farmer
7	Farmer	J801	Stoner, Alfred	n hf 4	10	M F and O	27	Farmer
7	Farmer	J938	Stoner, Ellis	n hf 2	12	M F and O	27	Farmer
7	Farmer	J939	Stoner, Martin.	n hf 2	12	M F and O	27	Farmer
7	Farmer	613	Thompson, William.	pt w pt 5	8	M F and T	7	Shoem'k'r
27	Farmer	J718	Thomas, Samuel.	s w qr 6	10	M F and T	15	Agent
27	Farmer	1052	Treharne, David	n w qr 7	13	M F and O	27	Farmer
27	Laborer	J1053	Treharne, Llewellyn.	n w qr 7	13	M F and O	27	Farmer
27	Farmer	866	Treharne, John.	s e pt 4 and o p	11	M F and O	27	Farmer

Polling Sub-Division No. 3.

Jur.	No. on Roll.	NAME.	LOT.	Concession or Street.	Other Description.	P.O.	Occupation.
	J867	Treharne, David	s hf 2 and o p	11	M F and O	27	Farmer
	J868	Treharne, Wm	s e pt 4 and o p	11	M F and O	27	Farmer
	J611	Tuckey, George	pt w pt 5	8	M F and O	7	Blacks'ith
	605	Vanderburg, Walter	pt 5	8	M F and T	7	Laborer
	606	Vanderburg, Vernon	pt 5	8	M F and T	7	Laborer
	786	Walters, David	n hf 5 and o p	10	M F and O	7	Farmer
	J787	Walters, Thaddeus	n pt 1 and o p	10	M F and T	7	Farmer
	J804	Walters, Luther	s pt n hf 5 and o p	11	M F and O	7	Farmer
	J1054	Walters, Joseph	n e qr 6	13	M F and O	27	Farmer
	J1050	Walters, Isaac	n w qr 6 and o p	13	M F and O	27	Farmer
	J1051	Walters, David	n w qr 6 and o p	12	M F and O	27	Farmer
	933	Ward, Truman H	s hf 1, 2, and o p	12	M F and O	27	Farmer
	J934	Ward, Oliver D	s hf 1, 2	12	M F & J O	27	Farmer
	J936	Ward, Hyland B	s hf 2 and o p	12	M F & J O	27	Farmer
	J709	Wiggins, Geo Arthur	pt s hf 5	9	M F and O	7	Laborer
	J861	Woodward, Philip B	n pt 1, 2	11	M F and O	27	Farmer
	873	Woodward, Francis	n pt 5	11	M F and O	27	Farmer
	1055	Zavitz, Abraham	s hf 6 and o p	13	M F and O	27	Farmer
	J1056	Zavitz, Ephraim	s hf 16 and o p	13	M F and O	27	Farmer
	J1059	Zavitz, Isaac	s hf 7	13	M F and O	27	Farmer
	610	Zavitz, James	pt w hf 5	8	M F and O	7	Merchant

Dist.	Occupation.	Lot No. on Roll.	NAME.	LOT.	Concession or Street.	Other Description.	P.O.	Occupation.
27.	Farmer	612	Zavitz, Benj P.	w pt 5	8	M F and O	7.	Wat Mak
27.	Farmer	617	Zavitz, Daniel M	e pt w pt 5	8	M F and O	7.	Farmer
7.	Blacks'ith	702	Zavitz, Joram	w hf 3	9	M F and O	7.	Farmer
7.	Laborer	705	Zavitz, Stanford	n pt 3	9	M F and O	7.	Farmer
7.	Laborer	704	Zavitz, Walter	e hf 3	9	M F and O	7.	Farmer
7.	Farmer	716	Zavitz, Isaac	n hf 5 and o p	9	M F and O	15.	Farmer
7.	Farmer	717	Zavitz, Jonah D	s w qr 6 and o p	10	M F and O	15.	Farmer
7.	Farmer	789	Zavitz, Chas W	n w qr 7 and o p	11	M F and O	27.	Farmer
7.	Farmer	795	Zavitz, John C	n pt 3 and o p	10	M F and O	7.	Farmer
7.	Farmer	796	Zavitz, Hiram W	n e pt 2 and o p	10	M F and O	7.	Farmer
7.	Farmer	806	Zavitz, Hugh W	s e qr 6	10	M F and O	15.	Farmer
7.	Farmer	874	Zavitz, Ephraim	w hf 6 and o p	11	M F and O	7.	Farmer
7.	Farmer	891	Zavitz, Elijah	n pt w pt 5 and o p	8	M F and O	7.	Gentle'an
7.	Farmer	943	Zavitz, Eliphlet	n hf 4	12	M F and O	27.	Farmer
7.	Farmer	1032	Zavitz, David	s e qr 1	13	M F and O	27.	Farmer
7.	Laborer	1031	Zavitz, Walter	s w qr 1	13	M F and O	27.	Farmer
7.	Farmer	1037	Zavitz, John U	n hf 2	13	M F and O	27.	Farmer
7.	Farmer	711	Zavitz, Noble J	pt s pt 5	9	M F and O	7.	Wag Mak

PART II.—Persons Entitled to Vote at Municipal Elections ONLY.

791	Brooks, Thomas	s pt s hf 2	10	Owner	42	Farmer
792	Brooks, Frank	pt s hf 2	10	Owner	7	Farmer

Jur.	No. on Roll.	NAME.	LOT.	Concession or Street.	Other Description.	P.O.	Occupation.
	793	Brooks, Ernest	pt s hf 2	10	Owner	7	Farmer
	779	Campbell, Malcolm	s hf 1	10	Owner	22	Farmer
	780	Campbell, Peter T	s hf 1	10	Owner	22	Farmer
	608	Fletcher, Jane	pt n pt 5	8	Owner	7	Widow
	951	Fortner, Lewis	n w qr 6	12	Owner	8	Agent
	677	Johnson, Hugh D	s hf 7 and o p	11	Owner	8	P S Insp'r
	600	Ketchum, Mary	pt w pt 5	8	Tenant	7	Widow
	700	McArthur, Ann	2	9	Owner	7	Spinster
	580	McGugan, Godfrey	s e pt 2	8	Owner	7	Farmer
	581	McGugan, John A	s e pt 2	8	Owner	7	Farmer
	582	McGugan, Arch B	s e pt 2	8	Owner	7	Farmer
	449	McKellar, Alex	s hf 1	6	Owner	40	Sup'y Mer
	1034	McLachlin, Betsy	s hf 3	13	Owner	10	Widow
	521	McLellan, Donald	e hf 2	7	Owner	8	Farmer
	520	McLellan, Angus	e hf 2	7	Owner	8	Farmer
	624	McVicar, John A	s e or s e qr 6	8	Owner	17	Farmer
	948	Neff, Samuel	s hf 5	12	Owner	33	Farmer
	880	Rosser, Hannah	pt w pt 5	9	Owner	7	Widow

Jur. No. R
609
695
599
703
805
1044
598
452
1036
462
935
731
575

Encl

Jur.	No. on Roll.	NAME.	LOT.	Concession or Street.	Other Description.	P.O.	Occupation.
	609	Shotwell, Tamera A.	n w cor 5	8	Owner	7	Spinster
	695	Wark, Thomas	s cor 1	9	Owner	7	Farmer
	599	Webster, Sarah	pt w pt 5	8	Owner	7	Widow
	703	Zavitz, Melissa	w hf 3	9	Owner	7	Widow
	805	Zavitz, Norman	n hf 6	10	Owner	47	Merchant

PART III.—Persons Entitled to Vote at Elections to the Legislative Assembly ONLY.

ERC Coorns, William lot 6. Cor. 11 M.F. 7 Labourer W

	1044	Cromon, Ernest	n hf 4	13	M F	27	Blacks'ith
	598	Crothers, Wesley	e pt w hf 5	8	M F	7	Laborer
	452	Gee, Sidney	n hf 2	6	M F	7	Laborer
	1036	Harmer, Franklin	s hf 3	13	M F	27	Laborer
	462	Hayes, Edward	n hf 4	6	M F	7	Laborer
	935	Merical, Ernest	s hf 1	12	M F	27	Laborer
	731	McGillivray, John	n cor 6	9	M F and H	15	Gentle'an
	575	McLoud, Donald	n pt 1	8	M F	7	Laborer

Jur.	No. on Roll	NAME.	LOT.	Concession or Street.	Other Description.	P.O.	Occupation.
	802	McPherson, John . . s	hf 410.....	M F and H.	27	Farmer
	803	McPherson, Wm A. . s	hf 410.....	M F.	27	Farmer
	719	Page, Johnn hf 59	M F.	7	Laborer
	526	Plant, Wm Jn hf 57	M F.	7	Laborer
	697	Skinner, Thomas . . pt	19	M F.	7	Laborer
	464	Steinhoff, Joseph . . n	hf 56	M F.	7	Laborer

Con

PA

Jur. 1

107

J97

J90

J90

J5

J55

J8

J9

J8

J8

J9

J6

J5

Occupation.
 27..Farmer
 27..Farmer

Polling Sub-Division No 4,

Comprising the south half of Lots Nos. 7 and 8, in the 6th Concession, and the North half of Lots Nos. 7 to 14, inclusive, in the 6th Concession, and the whole of Lots Nos. 7 to 14, inclusive, in the 7th, 8th, 9th and 10th Concessions, and Lots Nos. 8 to 14, inclusive, in the 11th, 12th and 13th Concessions.

7..Laborer
 7..Laborer
 7..Laborer
 7. Laborer

PART I.—Persons Entitled to Vote at BOTH Municipal Elections and Elections to the Legislative Assembly.

Jur.	No. on Roll.	NAME.	LOT.	Concession or Street.	Other Description.	P.O.	Occupation.
	1075	Barr, Hugh	n w qr 12.	13.	M F and O.	27	Farmer
	1977	Bennett, James L.	s hf 12.	12.	M F and O.	21	Farmer
	1905	Briggs, Wm	s w qr 14	11.	M F and O.	24	Farmer
	1907	Briggs, John	s e qr 14	11.	M F and O.	24	Farmer
	1549	Brown, Arch G	n hf 12.	7	M F and O.	21	Farmer
	1550	Brown, James D.	n hf 12.	7	M F and O.	21	Farmer
	1812	Bycraft, John E	s e qr 8.	10.	M F and O.	15	Farmer
	1978	Cameron, Alex A.	s hf n hf 13, 14	12.	M F and O.	21	Farmer
	1820	Cameron, Alexander	n hf 13, 14	10.	M F and O.	21	Farmer
	1901	Cameron, Duncan	n hf 14 and o p	11.	M F and O.	21	Farmer
	1902	Cameron, Edgar	n hf 14 and o p	11.	M F and O.	21	Farmer
	1667	Campbell, John A	n hf 13 and o p	7	M F & J O.	21	Farmer
	1554	Campbell, Donald A.	n hf 13	7	M F and O.	21	Farmer

Jur.	No. on Roll.	NAME.	LOT.	Concession or Street.	Other Description.	P.O.	Occupation.
	J556	Campbell, Peter P.	n w qr 14 and o p	7	M F and T.	21	Farmer
	J557	Campbell, Robt P.	n e qr 14 and o p	7	M F and O.	21	Farmer
	J552	Campbell, Alex P.	s hf 13	7	M F and O.	21	Farmer
	J652	Campbell, Duncan H.	s w qr 10 and o p	8	M F and O.	21	Farmer
	660	Campbell, John D.	s hf 13 and o p	10	M F and O.	21	Farmer
	J820	Campbell, Arch D.	n hf 16 and o p	10	M F and O.	21	Farmer
	J821	Campbell, Daniel	s hf 13 and o p	10	M F and O.	21	Farmer
	J824	Campbell, Duncan A.	s hf 14	10	M F and O.	21	Farmer
	J825	Campbell, Alex	s hf 14	10	M F and O.	21	Farmer
	J547	Carmichael, Duncan L.	s e qr 11 and o p	8	M F and C.	21	Farmer
	J551	Carmichael, Arch A.	s pt 12	7	M F and O.	21	Farmer
	741	Carmichael, John	s hf 10 and o p	9	M F and O.	15	Farmer
	J742	Carmichael, Chas M T	s hf 10 and o p	9	M F and O.	15	Farmer
	1089	Clampitt, Geo	s e qr 14	13	M F and O.	21	Farmer
	J1090	Clampitt, Wm H.	s e qr 14	13	M F and O.	21	Farmer
	635	Clare, James	n w cor 8	8	M F and O.	12	Merchant
	634	Clare, Samuel	n w cor 8	8	M F and O.	15	Blacks'ith
	636	Clare, John	n w cor 8	8	M F and O.	15	Blacks'ith
	J1066	Colburg, John	s e qr 8	13	M F and O.	27	Farmer
	798	Cooper, Benj	pt n hf 7	10	M F and T.	7	Laborer
	J548	Crawford, Peter	s hf 11	7	M F and O.	21	Farmer
	737	Cutler, Ellis	pt 9 and o p	9	M F and O.	15	Farmer

Polling Sub-Division No. 4.

O. Occupation.	Jur. No. on Roll.	NAME.	LOT.	Concession or Street.	Other Description.	P.O.	Occupation.
21.. Farmer	J738	Cutler, Wm A.	pt 9 and o p	9	M F and T.	15.	Farmer
21.. Farmer	813	Cutler, Amos.	hf 9, 10	10.	M F and O.	15.	Farmer
21.. Farmer	J964	Daniels, Johu	s hf 10	12.	M F and O.	27.	Farmer
21.. Farmer	J965	Daniels, Myron L.	s hf 10	12.	M F and O.	27.	Farmer
21.. Farmer	J966	Daniels, Burton N.	s hf 10	12.	M F and O.	27.	Farmer
21.. Farmer	J1069	Daniels, Thomas.	n hf 10 and o p	13	M F and O.	27.	Farmer
21.. Farmer	1070	Daniels, Orville.	n hf 10	13.	M F & F S.	27.	Farmer
21.. Farmer	633	Deguire, Octave	pt w cor 8	8	M F and O.	15.	Miller
21.. Farmer	J899	Dewar, John D.	n hf 13.	11.	M F and O.	21.	Farmer
21.. Farmer	1076	Dewar, Arch	s hf 11, 12	13.	M F and O.	31.	Farmer
21.. Farmer	J1079	Dewar, Peter A.	s hf 11, 12	13.	M F & J O.	31.	Farmer
15.. Farmer	J1077	Dewar, Donald	s hf 11, 12	13.	M F & J O.	31.	Farmer
15.. Farmer	J1078	Dewar, Arch jr	s hf 11, 12	13.	M F and O.	31.	Farmer
21.. Farmer	J1071	Dewar, Peter	s hf 10	13.	M F and O.	27.	Farmer
21.. Farmer	654	Fonger, Alfred	s e qr 10	8	M F and T.	21.	Laborer
12.. Merchant	1087	Gillis, Arch	n hf 13 and o p	13.	M F and O.	31.	Farmer
15.. Blacks'ith	J543	Graham, Peter A.	n hf 10.	7	M F and O.	21.	Farmer
15.. Blacks'ith	J544	Graham, Arch L.	n hf 10	7	M F and O.	21.	Farmer
27.. Farmer	J545	Graham, Norman	n hf 10	7	M F and O.	21.	Farmer
7.. Laborer	J663	Graham, Neil A	s cor 13	8	M F and O.	21.	Blacks'ith
21.. Farmer	J664	Graham, Dougal A.	s hf 13 and o p	8	M F and O.	21.	Farmer
15.. Farmer							

Jur.	No. on Roll.	NAME.	LOT.	Concession or Street.	Other Description.	P.O.	Occupation.
J665	Graham, Arch A	...s w pt 148	M F and O	.21	Farmer
668	Graham, Duncan A P	...s hf 148	M F and O	.21	Farmer
J751	Graham, Arch J	...s hf 13 and o p9	M F and G	.21	Farmer
J817	Graham, Peter J	...n hf 12 and o p10	M F and O	.21	Farmer
662	Graham, Duncan P	...pt s w pt 13 and o p8	M F & J O	.21	Gentle'an
J753	Graham, Duncan jr	...n hf 13 and o p9	M F & J O	.21	Farmer
J468	Gray, David	...w hf 7 and o p6	M F and O	.4	Farmer
J469	Gray, Homer	...w hf 7 and o p6	M F and O	.4	Farmer
626	Gray, Malcolm	...s hf 7 and o p8	M F and O	.7	Farmer
J627	Gray, Newton I	...s hf 7 and o p8	M F and O	.7	Farmer
J628	Gray, Isaac	...s hf 78	M F and O	.7	Farmer
J1074	Harris, Joseph	...n e qr 1113	M F and T	.27	Farmer
J1080	Harris, John S	...n e qr 1213	M F and O	.31	Farmer
J831	Henderson, Hugh	...n hf 14 and o p9	M F and O	.24	Farmer
J643	Hillard, Samuel	...n cor 8 and o p8	M F and O	.15	Farmer
J645	Hillard, Edmund	...s e pt 8 and o p9	M F and T	.15	Farmer
646	Hillard, John	...s e pt 8 and o p9	M F and T	.15	Farmer
497	Hodgson, Nathan	...n hf 136	M F and O	.4	Farmer
J498	Hodgson, Wm J	...n hf 136	M F and O	.4	Farmer
963	Hunter, Robt sr	...n hf 9 and o p12	M F and O	.27	Farmer
970	Hunter, Wm sr	...s e qr 1112	M F and O	.27	Farmer
971	Hunter Robt jr	...s e qr 1112	M F & F S	.27	Farmer

Occupation.	No. on Roll.	NAME.	LOT.	Concession or Street.	Other Description.	P.O.	Occupation.
Farmer	972	Hunter, Wm jr.	s e qr 11	12	M F & F S.	27	Farmer
Farmer	973	Hunter, Alex	s w qr 11	12	M F and O.	27	Farmer
Farmer	1063	Jenkins, Benjamin	n cor 8	13	M F and O.	27	Farmer
Gentle'an	9894	Lamont, Duncan	10	11	M F and O.	15	Farmer
Farmer	887	Leng, Robert	s s hf 13	11	M F and O.	21	Farmer
Farmer	9886	Leng, George	n hf 8	11	M F and O.	21	Farmer
Farmer	91062	Lewis, Chas	s w qr 8	13	M F and O.	27	Farmer
Farmer	9661	Lindsay, Norman	cen pt s hf 12	8	M F and T.	21	Minister
Farmer	9733	Livingston, Joseph	e pt 7 and o p	9	M F and T.	15	Farmer
Farmer	1067	Lumby, Philip	n pt 9	13	M F and O.	27	Farmer
Farmer	9721	Marsh, Jacob	s s pt 7, 8	9	M F and O.	15	Merchant
Farmer	9722	Marsh, Hiram J	s s pt 7 and 8	9	M F and O.	15	Merchant
Farmer	728	Marsh, Edgar J	s pt 7	9	M F and T.	15	Miller
Farmer	725	Marsh, Wm J	pt s pt 7	9	M F and T.	15	Laborer
Farmer	9732	Marsh, Elihu	e pt 7 and o p	9	M F and O.	15	Farmer
Farmer	9889	Mitchell, Alexander	s hf 8	11	M F and O.	15	Farmer
Farmer	9740	Mitchell, Robert	s w qr 11 and o p	10	M F and O.	15	Farmer
Farmer	9739	Mitchell, Peter J	n hf 10 and o p	9	M F and O.	15	Farmer
Farmer	641	Muma, Christian	n pt 8 and o p	8	M F and O.	15	Farmer
Farmer	9890	Muma, Michael K	s pt 9	11	M F and O.	15	Farmer

Polling Sub-Division No. 4.

Jur.	No. on Roll	NAME.	LOT.	Concession or Street.	Other Description.	P.O.	Occupation.
J642		Muma, John	hf 8 and o p	8	M F and O	15	Farmer
500		McArthur, John	hf 14 and o p	6	M F and O	21	Farmer
J539		McArthur, Malcolm	hf 9 and o p	7	M F and O	15	Farmer
496		McBain, Alexander	cor 12	6	M F and O	21	Gentle'an
979		McCallum, John	s pt 13 and o p	12	M F and O	24	Farmer
J980		McCallum, D Francis	s pt 13 and o p	12	M F and O	24	Farmer
J981		McCallum, Walter S.	s pt 13 and o p	12	M F and O	24	Farmer
J982		McCallum, Malcolm	s pt 13 and o p	12	M F and O	24	Farmer
J983		McCallum, Dougal	s hf 14	12	M F and O	24	Farmer
J542		McClurg, Edward	s hf 10	7	M F and O	21	Farmer
J969		McColl, Peter	hf 10	12	M F T & O	27	Farmer
1088		McColl, John	s w qr 14	13	M F and O	21	Farmer
477		McCollom, Robt L.	n pt 8	6	M F and O	15	Painter
478		McCollom, Wilber	n pt 8	6	M F and O	15	Painter
J975		McFarland, Duncan	hf 11	12	M F and O	21	Farmer
J656		McIntyre, Hector	e pt 12 and o p	8	M F and O	21	Farmer
J655		McIntyre, Peter D.	w pt 12	8	M F and O	21	Farmer
538		McKinlay, Donald sr.	s w qr 8 and o p	7	M F and O	4	Farmer
1086		McLachlan, Neil	pt n hf 13	13	M F and O	31	Farmer
649		McLean, Theophilus	s hf 9	8	M F and O	15	Farmer
736		McLean, John L.	s hf 9	8	M F and T	15	Farmer
J650		McLean, Neil	s hf 9	8	M F and O	15	Farmer

Polling Sub-Division No. 4.

Occupation.	Jur.	No. on Roll.	NAME.	LOT.	Concession or Street.	Other Description.	P.O.	Occupation.
Farmer		651	McLean, Malcolm E.	s hf 9	8	M F and O	15	Farmer
Farmer		672	McNair, James	s hf 14 and o p	9	M F and O	21	Farmer
Farmer		475	McVicar, John	n e pt 8	6	M F and O	4	Farmer
Gentle'an		637	McVicar, Peter	s hf 8	8	M F and O	15	Farmer
Farmer		639	McVicar, John D.	s hf 8	8	M F & F S.	15	Farmer
Farmer		638	McVicar, Neil	s hf 8	8	M F & F S.	15	Farmer
Farmer		640	McVicar, Hugh E.	s hf 8	8	M F & F S.	15	Farmer
Farmer		720	Nagle, Lawrence	w pt 7	9	M F and O	15	Farmer
Farmer		745	Paul, Chas A	n hf 11	9	M F and O	15	Farmer
Farmer		647	Price, Arthur	n w qr 9	8	M F and O	15	Farmer
Farmer		869	Robinson, John	pt s pt 9	9	M F and T.	15	Farmer
Painter		870	Robinson, John W	pt s pt 9	9	M F and T.	15	Laborer
Painter		871	Robinson, James R.	pt s pt 9	9	M F and T.	15	Laborer
Farmer		960	Ross, John	n hf 8	12	M F and O.	27	Farmer
Farmer		961	Ross, John R	n hf 8	12	M F and O.	27	Farmer
Farmer		809	Salsbury, James H.	s e qr 7	10	M F & F S.	15	Farmer
Farmer		808	Salsbury, John	s e qr 7	10	M F & F S.	15	Farmer
Farmer		670	Scott, John	n hf 14 and o p	8	M F & J O.	21	Farmer
Farmer		897	Scott, William	s hf 12	11	M F and O.	21	Farmer
Farmer		898	Scott, Hugh	s hf 12	11	M F and O.	21	Farmer

Jur.	No. on Roll.	NAME.	LOT.	Concession or Street.	Other Description.	P.O.	Occupation.
J559		Shanklin, Wm.	s hf 14	7	M F and O.	21.	Farmer
J537		Shotwell, Thos H.	n pt 7	7	M F and O.	15.	Farmer
		747 Simmons, Chas M.	s hf 12 and o p	10.	M F and O.	21.	Farmer
J473		Sinclair, John A.	e hf 7 and o p	6	M F and O.	4.	Farmer
J483		Sinclair, Neil	n hf 9 and o p	6	M F and O.	15.	Farmer
J484		Sinclair, John D.	n hf 9 and o p	6	M F and O.	15.	Farmer
J815		Sinclair, John	pt n hf 9	10.	M F and T.	15.	Farmer
J632		Smith, Daniel	n w pt 7	8	M F and O.	15.	Miller
J749		Smith, John A.	12	9	M F and O.	21.	V S
J895		Sinclair, Laughlin.	w hf 11	7	M F and O.	21.	Farmer
		485 Stewart, Donald	n hf 10, 11, 12	6	M F & J O.	21.	Farmer
J486		Stewart, Donald A.	n hf 10, 11, 12	6	M F & J O.	21.	Farmer
J487		Stewart, John A.	n hf 10, 11, 12	6	M F and O.	21.	Farmer
J750		Stewart, Alexander.	12	9	M F and O.	21.	Farmer
J1084		Stewart, Alex D.	s hf 13	12.	M F and O.	7.	Student
		729 Thomas, James R.	pt s pt 7	9	M F and O.	15.	Farmer
		730 Thomas, Dougal P.	pt s pt 7	9	M F and O.	15.	Laborer
1065		Thomas, David J.	pt n w pt 9	13.	M F and O.	27.	Farmer
J471		Tuckey, Chas D.	s hf 8	6	M F and T.	4.	Farmer
J976		Walters, Wallace.	n hf 12	12.	M F and O.	21.	Farmer
J1064		Walters, William.	pt n pt 8 and o p	13.	M F and O.	27.	Farmer

Occupation.	Jan.	No. on Roll.	NAME.	LOT.	Concession or Street	Other Description.	P.O.	Occupation.
Farmer		535	Waugh, John	hf 7	7	M F and O.	4.	Farmer
Farmer		536	Waugh, John T	hf 7	7	M F and O.	4.	Farmer
Farmer		476	White, Duncan	cor 8	6	M F and O.	4.	Farmer
Farmer		958	Wilson, Thos	e pt 8	12	M F and O.	15.	Farmer
Farmer		959	Wilson, Fernando	e pt 8	12	M F and O.	15.	Farmer
Farmer		9630	Wood, Egbert	n e pt 7 and o p	8	M F and O.	15.	Farmer
Farmer		9631	Wood, Clarence	n e pt 7 and o p	8	M F and O.	15.	Tailor
Miller								
V S								
Farmer		714	Zavitz, Daniel	s w cor 7 and o p	9	M F and O.	15.	Farmer
Farmer		715	Zavitz, Edgar M	s w cor 7 and o p	9	M F & J O.	15.	Farmer
Farmer		726	Zavitz, Edmund H	pt s pt 7	9	M F and O.	15.	Laborer
Farmer		727	Zavitz, Newton J	pt s pt 7	9	M F and O.	15.	Laborer
Farmer		810	Zavitz, Samuel P	s w qr 7, 8	10	M F and O.	15.	Farmer
Farmer		811	Zavitz, George O	s e qr 8	10	M F and O	15.	Farmer
Student		9596	Zavitz, Elwood M	n hf 8 and o p	10	M F and O.	7.	Farmer
Farmer		9892	Zavitz, Eugene	n pt 9	11	M F and O.	15.	Farmer
Farmer		9962	Zavitz, Albert	s hf 9	12	M F and O.	27.	Farmer
Laborer		91068	Zavitz, Jonah	s hf 9	13	M F and O.	27.	Farmer
Farmer								

PART II.—Persons Entitled to Vote at Municipal Elections ONLY.

Farmer								
Farmer		1072	Barr, Mary	n e qr 11	13	Owner	27.	Spinster

Jac	No. on Roll.	NAME.	LOT.	Concession or Street.	Other Description.	P.O.	Occupation.
	1073	Barr, Kate	n e qr 11	13	Owner	27	Spinster
	882	Barelay, Annie	s w pt 8	12	Owner	8	Widow
	814	Bernard, Wm.	pt n hf 9	10	Owner	3	Hotel K'r
	819	Cameron, Donald	n hf 11	10	Owner	3	Gentle'an
	653	Campbell, Peter A.	s e qr 10	8	Owner	43	Carpenter
	743	Carmichael, Marg't H.	s hf 11 and o p	9	Owner	15	Widow
	744	Carmichael, Duncan A.	s hf 11 and o p	9	Owner	3	Clerk
	546	Carmichael, Isabella	n hf 11 and o p	7	Owner	21	Widow
	644	Cutler, Mrs Carrie	s e pt 8 and o p	9	Owner	15	Widow
	968	Harrison, Bremner	n w qr 10	12	Owner	35	Laborer
	1061	Hodgins, Samuel R.	s w qr 8	13	Owner	49	Farmer
	893	Lamont, Ellen	10	11	Owner	15	Widow
	724	Marsh, Cynthia	pt s pt 7	9	Owner	15	Widow
	658	McIntyre, Jessie	pt e hf 12 and o p	8	Owner	12	Widow
	657	McIver, Wm	pt s pt 13	8	Owner	25	Farmer
	723	McKay, Ann S	pt s pt 7	9	Owner	15	Widow
	816	Quirrie, James	s hf 12 and o p	10	Joint O	28	Farmer
	807	Salsbury, Margaret	s e qr 7	10	Owner	15	Widow

Occupation.	Jur. No. on Roll.	NAME.	LOT.	Concession or Street.	Other Description.	P.O.	Occupation.
Spinster	472	Sinclair, Betsy	hf 7 and o p	6	Owner	4	Widow
Widow	474	Sinclair, Colin	o hf 7 and o p	6	Owner	4	Farmer
Hotel K'r	1083	Stewart, Mrs Arch	s hf 13	13	Owner	8	Widow
Gentle'an	629	Wood, Lillie	n e pt 7 and o p	8	Owner	15	Widow
Carpenter	797	Zavitz, Christie Ann	n hf 7	10	Owner	7	Widow

PART III.—Persons Entitled to Vote at Elections to the Legislative Assembly ONLY.

Laborer	896	Cameron, John C.	e hf 11	11	M F and H	21	Farmer
Farmer	822	Cameron, Lachlin	s hf 12	10	M F	21	Laborer
Widow	541	Campbell, Malcolm	n hf 9	7	M F	15	Laborer
Widow	671	Downie, Hugh	n hf 14	8	M F	21	Laborer
Widow	553	Draper, Wm A	s hf 13	7	M F	21	Laborer
Widow	669	Empy, John	s hf 14	8	M F	21	School Tr
Widow	488	Fletcher, Arch R	n hf 11	6	M F	21	Laborer
Farmer	666	Fletcher, Duncan	pt s hf 13	8	M F	21	Laborer
Widow	746	Fletcher, Samuel	n hf 11	9	M F	15	Laborer
Widow	752	Harrison, Frederick	s hf 13	9	M F	21	Laborer

Jur	No. on Roll.	NAME.	LOT.	Concession or Street.	Other Description.	P O.	Occupation.
	974	Harrison, Robert	n e qr 10	12	M F	27	Laborer
	499	Johnston, John A.	n hf 13	6	M F	4	Laborer
	818	Joyes, Robert	n hf 12	10	M F	21	Laborer
	734	Livingston, Arch sr.	e pt 7	9	M F	15	Laborer
	735	Livingston, John	e pt 7	9	M F	15	Laborer
	648	<i>CRB</i> Morris, Rendall M ^c Ewen	<i>Spt 8 -- 10</i>		<i>M F</i>	<i>15</i>	<i>Labourer</i>
	648	McDonald, David A.	n w qr 9	8	M F	15	Sc Teach'r
	904	McEachran, John M.	n hf 14	11	M F	21	Sc Teach'r
	967	McGugan, Arch	s hf 10	12	M F	27	Farmer
	827	McLean, Duncan	n hf 13 and 14	10	M F	21	Laborer
	900	McRury, Arch	n hf 13	11	M F	21	Laborer
	823	Stimel, John	s hf 12	19	M F	21	Laborer
	555	<i>CRB</i> Rose, Aleck	<i>S 1/2 9.</i>	<i>12</i>	<i>M F</i>	<i>27</i>	<i>School Teacher</i>
	555	Wright, George	n hf 13	7	M F	21	Laborer

Jur.	No. on Roll	NAME.	LOT.	Concession or Street.	Other Description.	P.O.	Occupation.
J763		Campbell, John A.	s hf 17 and o p	9	M F and O.	24.	Farmer
J762		Campbell, Peter.	n hf 17 and o p	9	M F and O.	24.	Farmer
J765		Campbell, Arch.	s pt n hf 17 and o p	9	M F and T.	24.	Farmer
J766		Campbell, Wm.	s pt n hf 17 and o p	10	M F and T.	24.	Farmer
J769		Campbell, Thos.	n hf 18	9	M F and O.	24.	Farmer
J566		Caverhill, Wm H.	e pt 17 and o p	7	M F and O.	20.	Farmer
J568		Caverhill, Thos W.	n hf 18	7	M F and O.	20.	Farmer
J569		Caverhill, Wm A.	n pt gore 19 and o p	7	M F and O.	20.	Farmer
J570		Caverhill, Adam T.	s hf 18	7	M F and O.	20.	Farmer
J681		Caverhill, Edward T.	s hf 17	8	M F and O.	21.	Farmer
J923		Charlton, Wm.	s hf 21 and o p	11	M F and O.	24.	Gentle'an
J842		Charlton, Lewis.	n pt 17, 18	10	M F and T.	24.	Farmer
J924		Charlton, George	s hf 20	11	M F and O.	24.	Farmer
J926		Charlton, Edward W.	s hf 21	11	M F and O.	24.	Farmer
J951		Cochrane, John.	n pt 20 and o p	10	M F and O.	24.	Farmer
J847		Cochrane, Hugh	s e qr 19 and o p	10	M F and O.	24.	Farmer
J848		Cochrane, Wm G.	n pt 20 and o p	10	M F and O.	24.	Farmer
J1097		Dewar, John M.	n hf 16	13	M F and O.	31.	Farmer
J685		Dixon, John	w pt 19	8	M F and O.	20.	Farmer
J1004		Drought, William	n w qr 19	12	M F and T.	26.	Drover
J563		Forbes, Duncan	s hf 16	7	M F and T.	20.	Farmer

Jur.	No. on Roll.	NAME.	LOT.	Concession or Street.	Other Description.	P.O.	Occupation.
756		Forbes, John n hf 15	15	9	M F & J O .	24.	Farmer
757		Forbes, James A. . n hf 15	15	9	M F & J O .	24.	Farmer
763		Fraser, Donald . . n hf 18 and o p	18	8	M F & J O .	20.	Farmer
764		Fraser, Arch s hf 18 and o p	18	8	M F & J O .	20.	Farmer
788		Gibson, Isaac s hf 15 and o p	15	12	M F and T .	24.	Farmer
786		Gilson, Richard . . s hf 16 and o p	16	12	M F & J T .	24.	Farmer
785		Gibson, John G . . s hf 15 and o p	15	12	M F & J T .	24.	Farmer
797		Gibson, Thos s hf 15 and o p	15	12	M F & J T .	24.	Farmer
907		Gibson, Thos n e pt 15	15	11	M F and O .	24.	Farmer
908		Gibson, Wm n e pt 15	15	11	M F and T .	24.	Farmer
940		Gilbert, David s hf 17 and o p	17	10	M F and O .	24.	Farmer
1099		Gillis, John N . . . s e qr 15	15	13	M F and O .	24.	Farmer
995		Granger, Edward . n hf 17	17	12	M F and O .	24.	Farmer
829		Goddard, Job s hf 15	15	10	M F and T .	24.	Farmer
674		Graham, Donald L. . n hf 15 and o p	15	8	M F and O .	21.	Farmer
910		Griffith, Nathan . . s hf 17 and o p	17	11	M F and O .	24.	Farmer
911		Griffith, Thos s hf 17 and o p	17	11	M F and O .	24.	Farmer
912		Griffith, George . . s hf 17 and 16	17	11	M F and O .	24.	Farmer
770		Hayes, Thos s hf 18	18	9	M F and O .	24.	Farmer
771		Hayes, John s hf 18	18	9	M F and T .	24.	Farmer
858		Headley, Wm s hf 21 and o p	21	10	M F and O .	24.	Farmer

Jur. No. on Roll.	NAME.	LOT.	Concession or Street.	Other Description.	P. O.	Occupation.
J828	Henderson, Chas.	hf 16 and o p	10	M F and O.	24	Farmer
J676	Johnson, Donald	hf 16	8	M F and O.	21	Farmer
678	Johnson, Arch	n w pt 16	8	M F and O.	21	Farmer
J1111	Johnston, Alex	n hf 20	13	M F and O.	36	Laborer
J857	Knight, John	n hf 21	10	M F and T.	29	Farmer
J692	Lawrence, Samuel	pt gore 20	8	M F and T.	20	Minister
J914	Lynn, Henry	n w qr 17	11	M F and O.	24	Farmer
J1014	Martin, Wm E	hf 21 and o p	12	M F and O.	29	Farmer
J1018	Martin, Thos H	hf 23	12	M F and O.	24	Farmer
846	Miller, David	s pt n hf 18 and o p	10	M F and O.	24	Gentle'an
686	McBean, Wm sr	e pt 19	8	M F and O.	20	Farmer
J687	McBean, Wm jr	e pt 19	8	M F & J O.	20	Farmer
J688	McBean, Duncan	e pt 19	8	M F & J O.	20	Farmer
J837	McClurg, Henry	n c qr 16 and o p	11	M F and O.	36	Farmer
J1116	McClurg, Wm	n hf 22	13	M F and O.	36	Farmer
J1117	McClurg, John A.	n hf 22	13	M F and O.	36	Farmer
1101	McDougall, Allan	s hf 16, 17	13	M F and O.	24	Farmer
J1103	McDougall, Neil	s hf 16, 17	13	M F and O.	24	Farmer
J1102	McDougall, John	s hf 16, 17	13	M F and O.	24	Farmer

Jur.	No. on Roll.	NAME.	LOT.	Concession or Street.	Other Description.	P.O.	Occupation.
	J1104	McDougall, Donald A.	hf 16, 17	13	M F and O	24	Farmer
	1112	McEwen, Donald	hf 21	13	M F and O	36	Farmer
	J1113	McEwen, John D.	hf 21	13	M F and T	36	Farmer
	J1093	McEwen, Hugh J.	n hf 21	13	M F and O	36	Farmer
	J1091	McEwen, John J.	n hf 15, 14 and o p	13	M F and O	31	Farmer
	J1092	McEwen, Peter	n hf 15, 14 and o p	13	M F and O	31	Farmer
	J1114	McEwen, Hugh D.	s hf 22	13	M F and O	36	Farmer
	772	McIntosh, John	s hf 19	9	M F and O	20	Farmer
	J773	McIntosh, William	s hf 19	9	M F and O	20	Farmer
	774	McIntosh, William	n c qr 19 and o p	9	M F and O	24	Farmer
	J775	McIntosh, Wm O	n hf 19	9	M F and O	24	Farmer
	J920	McKeichan, James	n hf 19	11	M F and T	24	Farmer
	562	McIntyre, Peter	s hf 16	7	M F and O	12	Gentle'an
	J1105	McLachlan, John	n hf 17	13	M F and O	31	Farmer
	J832	McLellan, John	n hf u hf 16 and o p	12	M F and O	24	Farmer
	J833	McLellan, John A	w hf 15 and o p	12	M F and O	24	Farmer
	J835	McLellan, Augustine	n hf 15 and o p	12	M F and O	24	Farmer
	J834	McLellan, Donald A	n hf 15 and o p	12	M F and O	24	Farmer
	836	McLellan, Nevine	n w qr 15	10	M F and O	24	Farmer
	507	McNeil, Alex	n hf 17	6	M F and O	20	Farmer
	J294	McNeil, John	n hf 17	6	M F and T	20	Farmer
	845	McVicar, Duncan	pt n hf s hf 18	10	M F and T	24	Blacks'ith

Jur.	No. on Roll.	NAME.	LOT.	Concession or Street.	Other Description.	P.O.	Occupation.
	J1120	Noyes, John A . . s	hf 23	13	M F and T	36	Farmer
	J1121	Noyes, Wm E . . s	hf 23	13	M F and T	36	Farmer
	J1122	Noyes, Thos H . . s	hf 23	13	M F and T	36	Farmer
	J1123	Noyes, Edwin . . s	hf 23	13	M F and T	36	Farmer
	J849	Oliver, John n	hf 19 and o p	10	M F & J O	24	Farmer
	J850	Oliver, Wm jr . . n	hf 19 and o p	10	M F and O	24	Farmer
	J1025	O'Neil, Bailey . . . n	pt gore 24	12	M F and O	37	Farmer
	J1010	Parker, Thomas . . n	hf 20	12	M F and O	26	Laborer
	J966	Parker, John n	hf 18	12	M F and O	26	Miller
	J1007	Patterson, James . s	hf 20	12	M F and O	24	Farmer
	J843	Petherham, John B. pt n	pt s hf 18	10	M F and O	24	Miller
	1124	Phillips, Daniel . . . n	w qr 23	13	M F and O	19	Farmer
	J1125	Phillips, David E . . n	w qr 23	13	M F and T	36	Farmer
	J1126	Phillips, Joseph . . n	e qr 23	13	M F and O	36	Farmer
	J631	Robson, Wm T pt s	pt gore 20	8	M F and O	20	M D
	503	Robson, George . . n	hf 15, 16	6	M F and O	4	Farmer
	J504	Robson, Geo E n	hf 15, 16	6	M F and O	4	Farmer
	1021	Robson, Robert . . n	hf 22	12	M F and O	36	Farmer
	1022	Robson, Jos H n	hf 22	12	M F & F S	36	Farmer
	J1106	Robson, George C . .	18	13	M F and O	24	Farmer

Jur	No. on Roll.	NAME.	LOT.	Concession or Street.	Other Description.	P.O.	Occupation.
J1107		Robson, J Norman	18	13	M F and O	24	Farmer
		558 Shanklin, Geo	hf 15 and o p	7	M F and O	21	Farmer
J560		Shanklin, Holmes	hf 15	7	M F and O	21	Farmer
J561		Shanklin, Thos	hf 16		M F and O	21	Farmer
J1013		Shiple, Thomas	hf 21	12	M F and O	24	Farmer
		927 Shiple, John T	hf 21	11	M F and O	24	Farmer
J928		Shiple, Chas A	hf 21	11	M F and O	24	Farmer
J1127		Siddall, John W	hf 24	13	M F and O	36	Farmer
		1128 Siddall, Joseph	pt 24 and o p	13	M F and O	37	Farmer
J1129		Siddall, Robt H	pt 25 and o p	13	M F and O	37	Farmer
J565		Simpson, John	s w pt 17	7	M F and O	21	Farmer
J564		Simpson, George	w pt 17	7	M F and O	21	Farmer
J906		Sinker, Alfred	s pt 15 and o p	11	M F and O	24	Farmer
J754		Smith, John	s hf 15	9	M F and O	21	Farmer
J917		Smith, David	n hf 18	11	M F and O	36	Farmer
		989 Squires, Richard	s hf 16 and o p	12	M F and O	24	Farmer
J993		Squires, Wm	s w qr 17	12	M F and O	24	Farmer
J990		Squires, John	s e qr 17 and o p	12	M F and O	24	Farmer
J991		Squires, Rich jr	s hf 16 and o p	12	M F and O	24	Farmer
		916 Stewart, Arch	n hf 18	11	M F and O	26	Farmer
J922		Thirlwall, Arthur I	n hf 20	11	M F and O	24	Farmer

Jur.	No. on Roll	NAME.	LOT.	Concession or Street.	Other Description.	P. O.	Occupation.
	1005	Thirlwall, Arthur	e hf 19 and o p	12	M F, O & J O	24	Farmer
J	1011	Thirlwall, Isaac	n hf 20	12	M F & J O	24	Farmer
J	1006	Thirlwall, Christopher	e hf 19 and o p	12	M F and O	24	Farmer
J	1002	Walker, Christopher	n w qr 19	12	M F and O	26	Post Mast
J	1003	Walker, Joseph	n w qr 19	12	M F and O	24	Farmer
	1110	Walker, Wm H	n hf 20 and o p	13	M F and T	26	Farmer
	571	Wood, William	s pt 19	7	M F and O	20	Farmer
	572	Wood, Thomas N	s pt 19	7	M F and O	20	Farmer

PART II.—Persons Entitled to Vote at Municipal Elections ONLY.

	673	Brettell, Thos	n pt 22	10	Owner	29	Farmer
	997	Brown, Thomas	s hf 18 and o p	12	Owner	3	Gentle'an
	998	Brown, Robert S	s hf 18 and o p	12	Owner	3	Unknown
	999	Brown, John	s hf 18 and o p	12	Owner	3	Unknown
	1000	Brown, Thomas	s hf 18 and o p	12	Owner	3	Unknown
	512	Battie, Ann	gor 18 and o p	6	Owner	20	Widow
	854	Calvert, Edward C	s pt 20	10	Tenant	29	Farmer
	853	Calvert, Robt L	s pt 20	10	Tenant	29	Farmer
	903	Cameron, Colin	n w qr 15 and o p	11	Owner	30	Brakem'n
	764	Campbell, Catharine	pt 17	9	Owner	24	Spinster

Jur.	No. on Roll.	NAME.	LOT.	Concession or Street.	Other Description.	P.O.	Occupation.
	768	Campbell, Ann	n hf 18	9	Owner	24	Widow
	915	Charlton, Edward	s w qr 18	11	Owner	29	Farmer
	941	Charlton, Albert	n pt 17 and 18	10	Owner	48	Laborer
	682	Fraser, Mary	18	8	Joint O	20	Widow
	1098	Gillis, Catharine	s w qr 15	13	Owner	24	Widow
	952	Hord, James	s hf of s hf 20	10	Owner	29	Farmer
	1109	Marshall, Finley	n hf 19	13	Owner	3	Clerk
	1019	Martin, John G	s hf 23	12	Owner	29	Farmer
	1108	McClurg, Arthur	s hf 19	13	Owner	3	Tea Ag't
	856	Nichols, Francis	n hf 21	10	Owner	37	Farmer
	1024	O'Neil, Sophia	n pt 24	12	Owner	37	Widow
	919	Parker, Wm	n hf 19	11	Owner	37	Laborer
	1029	Richards, James	s pt gore 24	12	Owner	37	Wag Mak
	1023	Robson, Wm B	n hf 23	12	Owner	37	Farmer
	689	Robson, John W	pt 20	8	Owner	20	Farmer
	690	Robson, Adam	pt 20	8	Owner	20	Farmer

Polling Sub-Division No. 5.

Jur. No. on Roll.	NAME.	LOT.	Concession or Street.	Other Description.	P.O.	Occupation.
693	Robson, Arthur	pt 20	8	Owner	20	Farmer
694	Robson, Lionel	pt 20	8	Owner	20	Farmer
1015	Rosser, Thomas	n w qr 19	9	Tenant	37	Farmer
1016	Rosser, James	n w qr 19	9	Tenant	37	Farmer
1017	Rosser, Matthew T.	n w qr 19	9	Tenant	37	Farmer
777	Scott, Thomas B.	n pt 21	9	Owner	20	Farmer
778	Scott, Edgar A	n pt 21	9	Owner	20	Farmer
1012	Shiple, Deborah	w hf 21	12	Owner	24	Widow
984	Wilson, George	s hf 15 and o p	12	Owner	8	Gentle'an

PART III.—Persons Entitled to Vote at Elections to the Legislative Assembly ONLY.

513	Battie, John	18	6	M F	20	Laborer
675	Bradley, James	n hf 15	8	M F	21	Laborer
767	Campbell, Alex	s hf 17	9	M F and H.	24	Farmer
925	Charlton, Llewellyn	s hf 20	11	M F	24	Laborer
1028	Clark, Wm	n pt 24	12	M F	37	Laborer
929	Crick, James	n hf 21	11	M F	24	Laborer
1029	Czanne, Ceril	n pt 24	12	M F	37	Laborer

Polling Sub-Division No. 5.

No. on Roll.	NAME.	LOT.	Concession or Street.	Other Description.	P.O.	Occupation.
505	Divine, Thomas . . n hf 15	6	M F	4	Laborer	
921	Gee, Walter s hf 19	11	M F and H	24	Laborer	
909	Gibson, Jeremiah . . n w qr 16	11	M F and H	24	Laborer	
1115	Gray, Duncan 18	13	M F	24	Laborer	
1096	Johnston, Wm s hf 21	13	M F	31	Laborer	
830	Kegin, John s hf 15	10	M F	24	Laborer	
913	Kelpin, Henry . . s hf 16	11	M F	24	Laborer	
1131	Laying, Michael 25	13	M F and O	37	Laborer	
932	Matthews, John 22	11	M F	24	Laborer	
992	Moore, Thomas s hf 16	12	M F			
1020	McIntosh, John G . . s hf 23	12	M F	29	Laborer	
930	Nichol, Robert n hf 21	11	M F	24	Laborer	
1130	Parrot, Reginald A . . 24	13	M F	37	Laborer	
994	Ramsey, Fred s w qr 17	12	M F	24	Laborer	
1009	Richards, Geo s hf 20	12	M F	24	Laborer	
680	Robson, Andrew . . n hf 17	8	M F	21	Laborer	

Polling Sub-Division No. 5.

Jur. No. on Roll.	NAME.	LOT.	Concession or street.	Other Description.	P.O.	Occupation.
755	Smith, Peter	s hf 15	9	M F	21	Laborer
1094	Sinclair, Daniel	n hf 21	13	M F	36	Laborer
1095	Thornton, Wm	n hf 21	13	M F	36	Laborer
1100	Tormsbea, Arthur	s e qr 15	13	M F and T	24	Farmer
567	Wallis, Robert B	e pt 17	7	M F	20	Laborer
1026	Ward, George	24	12	M F	37	Laborer
1008	Woodhall, John	s hf 21	12	M F	24	Laborer
918	Yelf, Wm D	n hf 18	11	M F	36	Laborer

550 of the within named voters are qualified to serve on Juries.

I, E. R. BARCLAY, Clerk of the Municipality of the Township of Lobo, in the County of Middlesex, do hereby certify that parts one and three of the within list constitute a correct list for the year 1898, of all persons appearing by the last revised Assessment Roll of the said Municipality to be entitled to vote at elections for members of the Legislative Assembly; and that parts one and two constitute a correct list for said year of all persons appearing by the said Roll to be entitled to vote at Municipal Elections in said Municipality, and I hereby call upon all electors to examine the said list, and if any omissions or other errors are perceived therein, to take immediate proceedings to have the said errors corrected according to law.

Dated the 15th day of August, 1898.

E. R. BARCLAY,
Clerk of the Township of Lobo,
Poplar Hill, P. O.

er
er
er
ner
orer
orer
orer
orer

obo, in
within
the last
lections
stitute a
titled to
electors
erein, to
v.

obo,



