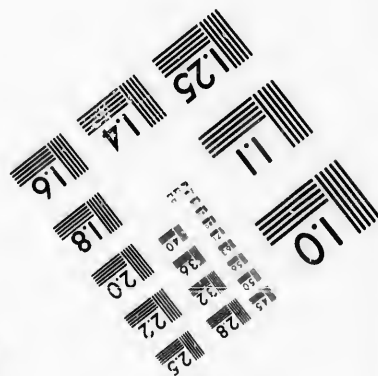
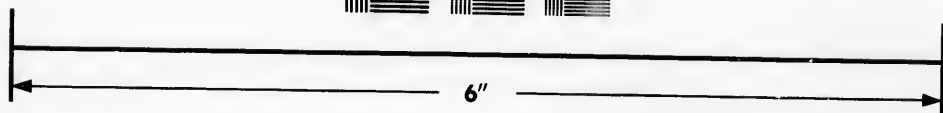
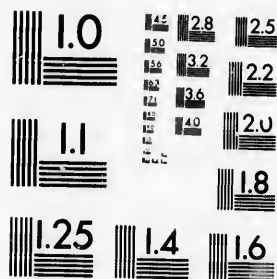


**IMAGE EVALUATION  
TEST TARGET (MT-3)**



**Photographic  
Sciences  
Corporation**

23 WEST MAIN STREET  
WEBSTER, N.Y. 14580  
(716) 872-4503



**CIHM/ICMH  
Microfiche  
Series.**

**CIHM/ICMH  
Collection de  
microfiches.**



Canadian Institute for Historical Microreproductions / Institut canadien de microreproductions historiques



**© 1986**

Technical and Bibliographic Notes/Notes techniques et bibliographiques

The Institute has attempted to obtain the best original copy available for filming. Features of this copy which may be bibliographically unique, which may alter any of the images in the reproduction, or which may significantly change the usual method of filming, are checked below.

L'Institut a microfilmé le meilleur exemplaire qu'il lui a été possible de se procurer. Les détails de cet exemplaire qui sont peut-être uniques du point de vue bibliographique, qui peuvent modifier une image reproduite, ou qui peuvent exiger une modification dans la méthode normale de filmage sont indiqués ci-dessous.

- |  |  |
|--|--|
| <input checked="" type="checkbox"/> Coloured covers/<br>Couverture de couleur  | <input type="checkbox"/> Coloured pages/<br>Pages de couleur   |
| <input type="checkbox"/> Covers damaged/<br>Couverture endommagée  | <input type="checkbox"/> Pages damaged/<br>Pages endommagées   |
| <input type="checkbox"/> Covers restored and/or laminated/<br>Couverture restaurée et/ou pelliculée  | <input type="checkbox"/> Pages restored and/or laminated/<br>Pages restaurées et/ou pelliculées  |
| <input type="checkbox"/> Cover title missing/<br>Le titre de couverture manque   | <input checked="" type="checkbox"/> Pages discoloured, stained or foxed/<br>Pages décolorées, tachetées ou piquées   |
| <input type="checkbox"/> Coloured maps/<br>Cartes géographiques en couleur   | <input type="checkbox"/> Pages detached/<br>Pages détachées  |
| <input type="checkbox"/> Coloured ink (i.e. other than blue or black)/<br>Encre de couleur (i.e. autre que bleue ou noire)   | <input checked="" type="checkbox"/> Showthrough/<br>Transparence   |
| <input type="checkbox"/> Coloured plates and/or illustrations/<br>Planches et/ou illustrations en couleur  | <input type="checkbox"/> Quality of print varies/<br>Qualité inégale de l'impression   |
| <input type="checkbox"/> Bound with other material/<br>Relié avec d'autres documents   | <input type="checkbox"/> Includes supplementary material/<br>Comprend du matériel supplémentaire   |
| <input type="checkbox"/> Tight binding may cause shadows or distortion<br>along interior margin/<br>La reliure serrée peut causer de l'ombre ou de la<br>distorsion le long de la marge intérieure   | <input type="checkbox"/> Only edition available/<br>Seule édition disponible   |
| <input type="checkbox"/> Blank leaves added during restoration may<br>appear within the text. Whenever possible, these<br>have been omitted from filming/<br>Il se peut que certaines pages blanches ajoutées<br>lors d'une restauration apparaissent dans le texte,<br>mais, lorsque cela était possible, ces pages n'ont<br>pas été filmées. | <input type="checkbox"/> Pages wholly or partially obscured by errata<br>slips, tissues, etc., have been refilmed to<br>ensure the best possible image/<br>Les pages totalement ou partiellement<br>obscurcies par un feuillet d'errata, une pelure,<br>etc., ont été filmées à nouveau de façon à<br>obtenir la meilleure image possible. |
| <input type="checkbox"/> Additional comments:<br>Commentaires supplémentaires:   |  |

This item is filmed at the reduction ratio checked below/  
Ce document est filmé au taux de réduction indiqué ci-dessous.

10X	12X	14X	16X	18X	20X	22X	24X	26X	28X	30X	32X
					✓						

The copy filmed here has been reproduced thanks to the generosity of:

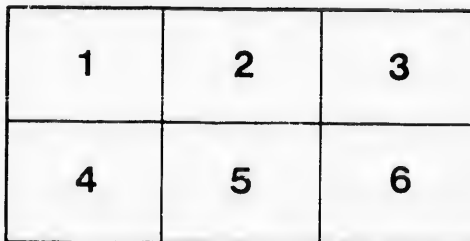
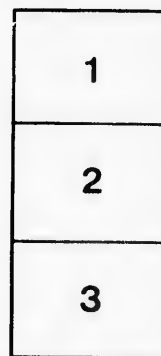
Seminary of Quebec  
Library

The images appearing here are the best quality possible considering the condition and legibility of the original copy and in keeping with the filming contract specifications.

Original copies in printed paper covers are filmed beginning with the front cover and ending on the last page with a printed or illustrated impression, or the back cover when appropriate. All other original copies are filmed beginning on the first page with a printed or illustrated impression, and ending on the last page with a printed or illustrated impression.

The last recorded frame on each microfiche shall contain the symbol  $\rightarrow$  (meaning "CONTINUED"), or the symbol  $\nabla$  (meaning "END"), whichever applies.

Maps, plates, charts, etc., may be filmed at different reduction ratios. Those too large to be entirely included in one exposure are filmed beginning in the upper left hand corner, left to right and top to bottom, as many frames as required. The following diagrams illustrate the method:



L'exemplaire filmé fut reproduit grâce à la générosité de:

Séminaire de Québec  
Bibliothèque

Les images suivantes ont été reproduites avec le plus grand soin, compte tenu de la condition et de la netteté de l'exemplaire filmé, et en conformité avec les conditions du contrat de filmage.

Les exemplaires originaux dont la couverture en papier est imprimée sont filmés en commençant par le premier plat et en terminant soit par la dernière page qui comporte une empreinte d'impression ou d'illustration, soit par le second plat, selon le cas. Tous les autres exemplaires originaux sont filmés en commençant par la première page qui comporte une empreinte d'impression ou d'illustration et en terminant par la dernière page qui comporte une telle empreinte.

Un des symboles suivants apparaîtra sur la dernière image de chaque microfiche, selon le cas: le symbole  $\rightarrow$  signifie "A SUIVRE", le symbole  $\nabla$  signifie "FIN".

Les cartes, planches, tableaux, etc., peuvent être filmés à des taux de réduction différents. Lorsque le document est trop grand pour être reproduit en un seul cliché, il est filmé à partir de l'angle supérieur gauche, de gauche à droite, et de haut en bas, en prenant le nombre d'images nécessaire. Les diagrammes suivants illustrent la méthode.

THE

**DOMINION BUILDING SOCIETY**

---

**DIRECTORS:**

EDMOND GRAVEL, Esq., *President.*  
PATRICK DONNELLY, Esq., *Vice-President.*  
L. W. TELMOSSE, Esq.  
CHS. LAMOUREUX, Esq.  
M. H. BRISSETTE, Esq.

J. B. LAFLEUR, *Secretary-Treasurer.*

---

Office : No. 55 St. James Street, Montreal.

---

MONTREAL.

W. F. DANIEL PRINTING OFFICE  
Corner of St. Gabriel and Ste. Thérèse Street.

1876.

S. 34



THE NATIONAL ARCHIVES

RECORDS SECTION

1940-1945  
OFFICE OF THE SECRETARY OF WAR  
WASHINGTON, D.C.

UNITED STATES DEPARTMENT OF WAR

OFFICE OF THE SECRETARY OF WAR



THE  
**DOMINION BUILDING SOCIETY**

---

DIRECTORS :

EDMOND GRAVEL, Esq., *President.*  
PATRICK DONNELLY, Esq., *Vice-President.*  
L. W. TELMOSSE, Esq.  
CHS. LAMOUREUX, Esq.  
M. H. BRISSETTE, Esq.

J. B. LAFLEUR, *Secretary-Treasurer.*

---

Office : No. 55 St. James Street, Montreal.

---

MONTREAL.

W. F. DANIEL PRINTING OFFICE.

Corner of St. Gabriel and Ste. Thérèse Street.

1876.

THE UNIVERSITY OF CHICAGO

PHYSICS DEPARTMENT

RESEARCH REPORT

1870

o  
t  
g  
c  
l  
  
i  
c



## NOTICE.

---

The General Annual Meeting of the Shareholders of this Society for the election of Directors and the transaction of the affairs of the Society generally, shall take place on Thursday, the 4th of May next, at 2½ O'clock P. M. sharp, in Nelson's Hall, No. 505 Craig Street, Montreal.

Notice of said meeting is given according to law in two newspapers, the "Evening Star" and the "National."

Shareholders are hereby invited to attend said meeting.

Montreal, 19 April 1876.

By order of the Directors.

J. B. LAFLEUR,

*Sect. Treasurer.*

I

W

Act  
Act  
All  
All  
All  
All  
All  
Am  
Anc  
Arc  
Arc  
Arc  
Arc  
Arc  
Arc  
Arm  
Arr  
Ass  
Ass  
Ass  
Ass  
Aub  
Aub

# Dominion Building Society.

## SHAREHOLDER'S LIST

**With the Amount of their Shares.**

NAMES.	1st App. Stock.	2d. App. Stock.
Achim Zotique .....		\$2000 00
Acton Georges.....		2000 00
Allard D. ....		2000 00
Allard N.....		2000 00
Allard Narcisse.....	\$1000 00	
Allard P. ....		2000 00
Allen John D.....	1000 00	
Amesse Pascal.....		2000 00
Andrew Charles .....	0	2000 00
Archambault B. ....		2000 00
Arcand Siméon.....		2000 00
Archambault Am. ....		
Archambault Nap. ....		
Archambault Ulr.....	2000 00	
Armatrong R. J.....	2000 00	
Arrahill M.....	1000 00	
Asselin E.....	1000 00	
Asselin G. J.....	1000 00	
Asselin Joseph .....	3000 00	2000 00
Asselin Louis.....	1000 00	
Aubertin Zoé .....	1000 00	2000 00
Aubry Marcel .....	2000 00	

## APPROPRIATION STOCK—Continued.

NAMES	1st. App. Stock.	2d. App. Stock.
Archambault N. ....		\$2000 00
Audet Jérémie.....	\$1000 00	
Baillargeon Dme.....	2000 00	
Baillard N.....	1000 00	
Bachand H.....		2000 00
Barbeau Frs.....		2000 00
Barbeau J. Bto.....		2000 00
Barbeau Victor.....		2000 00
Barrette Alph.....		2000 00
Barrette Alf. ....		2000 00
Barrette Jos.....		2000 00
Barrette Norb .....	1000 00	
Barré Oliv .....	1000 00	
Bastion F.....	1000 00	2000 00
Beaudry C.....	2000 00	
Beauchamp Louis .....	4000 00	
Beauchamp Zotique.....	1000 00	
Beauchamp Pierre.....	1000 00	
Beauchamp O .....		4000 00
Beaudry A. F. X.....	2000 00	
Beaudry Auguste.....	5000 00	4000 00
Beaudry Q.....		2000 00
Beaudoin J. E.....		4000 00
Beaudry Joseph.....		2000 00
Beaudoin C.....		2000 00
Beaudet E.....		2000 00
Beaufort W.....		2000 00
Beaudry R.....		4000 00
Beaudry P.....		2000 00
Beau C.....		2000 00
Beauprè Thersile Dlle.....	1000 00	
Beauregard Joseph.....		8000 00
Beauvais Gédéon.....	2000 00	
Beauvais J. A.....	2000 00	
Beauvais M.....	1000 00	
Beauprè M.....	2000 00	
Becette Joseph.....	1000 00	2000 00

## APPROPRIATION STOCK—Continued.

Ed. App. Stock.	NAMES.	1st. App. Stock.	2d. App. Stock.
\$2000 00	Begnais Alfred.....	\$1000 00	
	Bélanger Michel.....	3000 00	
	Bélanger A.....	1000 00	\$2000 00
2000 00	Bélanger Joseph sen.....	4900 00	2000 00
2000 00	Bélanger Delphine.....	1000 00	
2000 00	Bélanger Jean-Bte.....	1000 00	4000 00
2000 00	Bélanger Ovide.....	1000 00	
2000 00	Bélanger Joseph jun.....	7000 00	4000 00
2000 00	Bélanger Jos. Dme.....	1000 00	
	Bélanger Marie Dlle.....	2000 00	
	Bélanger Jos. petit fils.....	1000 00	
	Bélanger Vincent.....	2000 00	
2000 00	Bélanger S. Dlle.....	2000 00	
	Bélanger Léandre.....	1000 00	
	Bélanger Napoléon.....	1000 00	2000 00
	Bélanger F. X.....	2000 00	
	Bélanger C.....		2000 00
4000 00	Bélanger F. X. et Jos.....		2000 00
	Bélaire Olivier.....	1000 00	
4000 00	Béland A.....	1000 00	
2000 00	Bellefeuille Léon.....	1000 00	
4000 00	Bellefeuille O.....		4000 00
2000 00	Belisle Théophile.....		2000 00
2000 00	Belisle Séraphin.....	1000 00	
2000 00	Bellefleur Alphonse.....		2000 00
4000 00	Bérard Charles.....		2000 00
2000 00	Berthiaume W.....		2000 00
2000 00	Bériaux Damase.....		2000 00
	Benoit P.....		2000 00
	Bertrand Siméon.....	1000 00	
8000 00	Benoit Samuel.....	1000 00	
	Bertrand Mathilde.....	2000 00	
	Bessette F. X.....		2000 00
	Bezeau Joseph.....		2000 00
	Blache Jean.....	1000 00	
2000 00	Blanchette Mathilde.....	1000 00	2000 00
	Blanchard L. C.....		2000 00

## APPROPRIATION STOCK—Continued.

NAMES.	1st App. Stock.	2d App. Stock.
Bleau A. P.....		\$2000 00
Biband J. J. E.....	\$2000 00	6000 00
Bibaud Léon.....	1000 00	
Bourdon Pierre.....	5000 00	4000 00
Boucher J.....	1000 00	
Bouchard Jos.....	1000 00	
Bouchard O.....	1000 00	
Boucher Pierre.....	1000 00	
Bonami Mathilde.....	1000 00	
Bourque Chs.....	1000 00	
Boucher J. N.....	1000 00	
Boucher E. Dlle.....	1000 00	
Bohémier Marguerite.....	1000 00	
Boker Ida.....		2000 00
Bousquet Edouard.....		2000 00
Bonnin Joseph.....		2000 00
Boan H. W.....		2000 00
Boucher F.....		2000 00
Bourdon B.....		2000 00
Breau Gilbert jun.....		2000 00
Breau sin.....		2000 00
Bérard B.....		2000 00
Branchaud J. B.....		2000 00
Brazeau A.....		4000 00
Bienvenu C.....		2000 00
Berthelot L.....		2000 00
Boisseau L.....		2000 00
Bourbonnière O.....		2000 00
Bourdon Chs.....		4000 00
Bousquet L.....		2000 00
Bourassa & Riendeau.....		2000 00
Bissonnette A.....		4000 00
Biumenthal-Auny.....		4000 00
Borland John.....		2000 00
Bousquet C.....		2000 00
Bissonnette O.....		2000 00
Bockley Joseph.....		2000 00

## APPROPRIATION STOCK—Continued.

2d App. Stock.	NAMES.	1st. App. Stock.	2d. App. Stock.
\$2000 00	Bourgeois P. L.....		\$2000 00
6000 00	Bourbonnière D.....		2000 00
4000 00	Boucher Antoine.....	\$1000 00	
	Brien E. Dme.....	1000 00	
	Brien A.....	1000 00	
	Brien L.....	1000 00	
	Branley John.....	1000 00	
	Brissette E.....	4000 00	
	Brissette M. H.....	5000 00	2000 00
	Burgess Thomas.....	2000 00	
	Burke Walter.....	1000 00	2000 00
	Brisson Léocadie.....	1000 00	
2000 00	Brouks Thomas.....		8000 00
2000 00	Brissette P. J.....		2000 00
2000 00	Bridgeman G.....		2000 00
2000 00	Brooks Thomas.....		2000 00
2000 00	Brooks Delphine.....		2000 00
2000 00	Brooks C.....		2000 00
2000 00	Bréchu N.....		2000 00
2000 00	Brien Louis.....		2000 00
2000 00	Brunet L.....		4000 00
2000 00	Brunet David.....		2000 00
4000 00	Burns Thomas.....		2000 00
2000 00	Burns James.....		2000 00
2000 00	Butéau Adolphe.....		2000 00
2000 00	Byrns O.....		2000 00
2000 00	Campbell S. S.....	6000 00	
4000 00	Cadotte Joseph.....	1000 00	
2000 00	Contin L. O.....	1000 00	
2000 00	Caya J. Bte.....	2000 00	
4000 00	Cassand Vital.....	1000 00	
4000 00	Cassand Edouard.....	2000 00	
2000 00	Cassand Marie.....	1000 00	
2000 00	Carroll Daniel.....	1000 00	
2000 00	Caya Isaie.....	1000 00	
2000 00	Caya Louise.....	1000 00	
2000 00	Cassand Domitilde.....	1000 00	

APPROPRIATION STOCK—*Continued.*

NAMES.	1st. App. Stock.	2d. App. Stock.
Cassidy John L.....	\$5000 00	.....
Cardinal Clémence.....	.....	\$2000 00
Cardinal & Ménard.....	.....	2000 00
Cavalo P.....	.....	2000 00
Capbert Emile.....	.....	2000 00
Catelli Charles.....	.....	6000 00
Carrière Joseph.....	.....	2000 00
Carroll Michael.....	.....	4000 00
Cattraford Ald.....	.....	2000 00
Casavant Philomène.....	.....	2000 00
Cardinal J-Bte.....	.....	2000 00
Cartier Rémi.....	.....	2000 00
Casavant Joseph.....	.....	2000 00
Charron Joseph.....	1000 00	.....
Chamberland E.....	1000 00	.....
Chamberland Léon.....	1000 00	.....
Chaput E. Dme.....	1000 00	.....
Chalut Emile.....	2000 00	.....
Chalut Arthur.....	1000 00	.....
Charland Dme.....	1000 00	.....
Charbonneau Olivier.....	1000 00	.....
Chalifoux J.-B.....	1000 00	.....
Chalifoux J. B. sen.....	1000 00	.....
Charbonneau Catherine.....	1000 00	.....
Champagne Alphonse.....	.....	2000 00
Chartrand U.....	.....	2000 00
Charest Joseph.....	.....	2000 00
Charbonneau J. B.....	.....	2000 00
Chaussé A.....	.....	2000 00
Charron J. A. S.....	.....	2000 00
Chevalier Edouard.....	2000 00	.....
Chevalier Joseph.....	.....	2000 00
Chevreaux Pierre.....	.....	2000 00
Chicoine P.....	.....	2000 00
Clément Charles.....	1000 00	.....
Clément Désiré.....	.....	2000 00
Clairé P.....	.....	2000 00



## APPROPRIATION STOCK—Continued.

pp. k.	2d. App. Stock.	NAMES.	1st. App. Stock.	2d. App. Stock.
00	.....	Coderre Philéas .....	.....	\$2000 00
.....	\$2000 00	Coderre Gilbert.....	.....	2000 00
.....	2000 00	Collard Joseph.....	\$1000 00	.....
.....	2000 00	Collerette A.....	1000 00	.....
.....	2000 00	Coghlan Thomas.....	1000 00	.....
.....	2000 00	Coidlier E.....	.....	2000 00
.....	6000 00	Colombe A. sen.....	.....	2000 00
.....	2000 00	Colombe A. jun.....	.....	2000 00
.....	4000 00	Collin Adolphe.....	.....	2000 00
.....	2000 00	Collin Napoléon.....	.....	2000 00
.....	2000 00	Contant A.....	1000 00	4000 00
.....	2000 00	Conway James.....	.....	4000 00
.....	2000 00	Conway Ellen.....	.....	2000 00
.....	2000 00	Conway Mary.....	.....	2000 00
0	.....	Conway Alice.....	.....	2000 00
0	.....	Côté Paul.....	.....	2000 00
0	.....	Corbeil F.....	.....	6000 00
0	.....	Constantin Gédéon.....	1000 00	.....
0	.....	Corbeil R. Dme.....	1000 00	.....
0	.....	Côté Joseph.....	1000 00	.....
0	.....	Côté Victor.....	1000 00	.....
0	.....	Courtémanche Eusèbe.....	1000 00	.....
0	.....	Coutlé George.....	2000 00	.....
0	.....	Courtémanche Moïse.....	.....	2000 00
0	.....	Cousineau Joseph.....	.....	2000 00
0	2000 00	Cousineau G.....	.....	2000 00
.....	2000 0	Cox F. X.....	.....	2000 00
.....	2000 00	Coyie P. J.....	1000 00	.....
.....	2000 00	Coyle P. J. Dme.....	2000 00	.....
.....	2000 00	Crawford John.....	1000 00	.....
.....	2000 00	Croteau George.....	.....	4000 00
0	.....	Crevier Augustin.....	.....	2000 00
.....	2000 00	Crevier A.....	.....	2000 00
.....	2000 00	Crevier J. W.....	6000 00	.....
.....	2000 00	Crowley Daniel.....	.....	4000 00
0	.....	Croteau André.....	2000 00	.....
.....	2000 00	Croteau Georges.....	1000 00	.....
.....	2000 00			

APPROPRIATION STOCK—*Continued.*

NAMES.	1st. App. Stock.	2d. App. Stock.
Curran P. J.....	\$2000 00	\$2000 00
Curran Charles.....	1000 00	.....
Cully Samuel.....	1000 00	.....
Cusson L.....	.....	2000 00
Cullen Wm.....	.....	2000 00
Cuddy James.....	.....	2000 00
Cusson A.....	.....	2000 00
David Auguste.....	1000 00	.....
David Stanislas.....	1000 00	.....
Dagenais Mathilde.....	1000 00	.....
Dagenais Bazile.....	1000 00	.....
Daoust Henriette.....	1000 00	.....
Dacier Marie.....	1000 00	.....
Dalbec A.....	.....	6000 00
Daniel W. F.....	.....	2000 00
David Magloire.....	.....	2000 00
Daignault Alphonse.....	.....	2000 00
Delorme Ovide.....	.....	2000 00
Desormeau Isaïe.....	.....	2000 00
DesRochers E.....	.....	2000 00
Desmarais H.....	.....	2000 00
Desert H.....	.....	2000 00
Demers Etienne.....	1000 00	2000 00
Desmarteau P. E. B.....	.....	4000 00
Deacon George.....	.....	4000 00
Desnoyers Mag.....	.....	2000 00
DeBlois & Day.....	.....	2000 00
DeLery Dme.....	.....	2000 00
Demers L. O.....	.....	2000 00
Deschamps A.....	.....	2000 00
Desjardins R.....	.....	4000 00
Derome E.....	.....	2000 00
Decelles Prospère.....	.....	2000 00
Desnoyers M. C.....	.....	2000 00
Desmarais G. E.....	.....	2000 00
Dequoi A.....	.....	2000 00
Décarie F.....	.....	2000 00

De  
De  
Des  
Des  
Dés  
Des  
Des  
Dor  
Des  
Deg  
Dég  
Des  
Delo  
Des  
Desja  
Dem  
Dem  
Déca  
Delo  
Desja  
Desja  
Degr  
Degu  
Depo  
Desro  
Décar  
Décar  
Denis  
Dionn  
Doré  
Douce

APPROPRIATION STOCK—Continued.

2d. App. Stock.	NAMES.	1st. App. Stock.	2d. App. Stock.
2000 00	Desmarais O.....		\$2000 00
	Deslauriers A.....		2000 00
	Desrosiers Pierre.....		2000 00
2000 00	Desrochers Marie.....	\$2000 00	
2000 00	Décarie Charles.....	1000 00	
2000 00	Denis Joseph.....	1000 00	
2000 00	Deschamps Ulric.....	1000 00	
	Desmarais F. X.....	1000 00	
	Donnelly Patrick.....	2000 00	40000 00
	Desmarteau & Co.....	14000 00	24000 00
	Deguire Antoine.....	1000 00	
	Décarie Octave.....	1000 00	
	Desmarteau N. B.....	2000 00	
6000 00	Décarie Tharsile.....	1000 00	
2000 00	Defoy Octave.....	1000 00	
2000 00	Degrandpré C.....	2000 00	
2000 00	Degrandpré V. V.....	7000 00	24000 00
2000 00	Desormeau Ferdinand.....	1000 00	
2000 00	Delongchamps Eusèbe.....	1000 00	
2000 00	Desmarteau Charles.....	2000 00	8000 00
2000 00	Desjardins Paul.....	3000 00	
2000 00	Demers George.....	1000 00	
2000 00	Demers Arthur.....	2000 00	
4000 00	Décarie Damase.....	1000 00	
4000 00	Delorimier Stephen.....	2000 00	
2000 00	Desjardins J. A.....	2000 00	2000 00
2000 00	Desjardins Arthur.....	5000 00	
2000 00	Degrosbois Tanc. B.....	2000 00	2000 00
2000 00	Deguire Michel.....	1000 00	
2000 00	Depoça A. L.....	1000 00	
4000 00	Desroches S.....	1000 00	
2000 00	Décarie Philomène.....	1000 00	
2000 00	Décarie Céline.....	1000 00	
2000 00	Denis Joseph.....	1000 00	
2000 00	Dionné A.....		2000 00
2000 00	Doré Amable.....		4000 00
2000 00	Doucet L.....		2000 00

## APPROPRIATION STOCK—Continued.

NAMES.	1st. App. Stock.	2d. App. Stock
Doucet Lucie.....		\$2000 00
Doucet Alphonse.....		2000 00
Doré Pierre.....	\$1000 00	
Dowpark Mary.....	1000 00	
Donnelly F.....	5000 00	2000 00
Doherty J. J.....	2000 00	
Donnellson Wm.....	1000 00	
Draycott C. F.....	1000 00	
Drapeau François.....	2000 00	
Drolet Georges.....		2000 00
Duford H.....		2000 00
Duford Denis.....		2000 00
Dumont et Valière.....		2000 00
Dumontette Octave.....		2000 00
Dumontette Denise.....		2000 00
Dufresne Amédée.....		2000 00
Duhamel A.....		2000 00
Dupuis Messire.....		4000 00
Durocher J. B.....		8000 00
Duplessis Ces.....		2000 00
Duclos S. F.....		22000 00
Dubois Wm.....		2000 00
Dusont Jos.....		2000 00
Duchaineau Jos.....		2000 00
Dumouchel Léandre.....	1000 00	
Dubois Hector.....	1000 00	2000 00
Dugnay Phillippe.....	1000 00	
Duchaineau H.....	5000 00	
Duplessis Marie.....	1000 00	
Duplessis J. B.....	1000 00	
Ducharme G.....	2000 00	
Dupuis François.....	1000 00	
Dupré F. X.....	1000 00	
Dudevoir Hilaire.....	1000 00	
Dugnay Moïse.....	2000 00	
Duplessis Dame.....	1000 00	
Duquet N.....	1000 00	

APPROPRIATION STOCK— *ntinued.*

1st App. Stock	NAMES.	1st App. Stock.	2d App. Stock.
	Dugnay F.....	\$1000 00	.....
2000 00	Dufresne Salom.....	6000 00	24000 00
2000 00	Dufresne Joseph.....	1000 00	.....
.....	Dubreuil Oscar.....	1000 00	.....
.....	Dubeau C.....	2000 00	.....
2000 00	Dubeau Romulus.....	1000 00	.....
.....	Dupras C.....	2000 00	.....
.....	Dufresne L. P.....	1000 00	.....
.....	Dupuis J. N.....	9000 00	2000 00
2000 00	Dyon Alfred.....	2000 00	.....
2000 00	Eaves E. D.....	.....	2000 00
2000 00	Egan C.....	3000 00	.....
2000 00	Emard Victor.....	.....	2000 00
2000 00	Emond Wilfred.....	.....	2000 00
2000 00	Emont Alfred.....	.....	2000 00
2000 00	Ethier Jules.....	1000 00	.....
2000 00	Ethier Benjamin.....	1000 00	.....
2000 00	Ethier J. B.....	.....	2000 00
2000 00	Etu A.....	.....	2000 00
2000 00	Etu Noël.....	.....	2000 00
2000 00	Fanton John.....	1000 00	.....
2000 00	Fausse A.....	.....	2000 00
2000 00	Filiatrault Joseph.....	.....	2000 00
2000 00	Fisher C.....	.....	2000 00
2000 00	Fisher George.....	.....	4000 00
.....	Filto H.....	.....	2000 00
2000 00	Flynn John.....	.....	2000 00
.....	Flynn Eugène.....	.....	2000 00
.....	Flood Patrick.....	.....	2000 00
.....	Fontaine H.....	1000 00	.....
.....	Fortin N. O.....	.....	4000 00
.....	Forget dit D. D.....	.....	2000 00
.....	Fortin O.....	.....	2000 00
.....	Forget J. H.....	1000 00	.....
.....	Forget J.....	1000 00	.....
.....	Fortin Césaire.....	1000 00	.....
.....	Fournier Philomène.....	2000 00	.....

## APPROPRIATION STOCK—Continued.

NAMES.	1st App. Stock.	2d. App. Stock.
Frocker Wm.....		
Gauthier Léandre .....		\$2000 00
Gauthier François.....	1000 00	4000 00
Gagnor Marguerite.....	1000 00	
Gauthier Séraphin.....	1000 00	
Gascong Benjamin.....	1000 00	
Gauthier dit L. D.....	2000 00	
Garceau Félix.....	1000 00	
Gauvin G. A. Dme .....	1000 00	
Gauthier Hypp.....	1000 00	
Gaucher Chs. G.....	2000 00	
Gadbois O.....	1000 00	
Gaucher G. G.....	1000 00	
Gariépy Elzéar.....	6000 00	4000 00
Gaudry A. E.....	1000 00	
Gareau Charles.....	2000 00	
Gavagan John.....		2000 00
Gauthier Isaïe.....		2000 00
Galise C.....		4000 00
Garvier H.....		2000 00
Gagnon Thomas .....		2000 00
Gauthier A. H.....		2000 00
Galarneau O.....		2000 00
Gagnon Mathilde .....		2000 00
Gauthier M.....		2000 00
Gagnon C.....		2000 00
Gadbois C. A. E.....		2000 00
Galipeau Joseph.....		2000 00
Germain Joseph .....		2000 00
Gervais Philippe.....		2000 00
Gervais Louis.....		2000 00
Gervais A. O.....		2000 00
Gervais A. E.....	1000 00	2000 00
Genest J. C.....	2000 00	
Gervais C.....	1000 00	
Geoffrion C. A.....	1000 00	
Gebhardt G. J.....	1000 00	
	1000 00	

Gi  
Gi  
Gi  
Gi  
Gi  
Gi  
Gi  
Gi  
Gi  
Gi  
Gi  
Gi  
Gi  
Gi  
Gi  
Gi  
Glo  
Gob  
God  
Goss  
Goul  
Goff  
Gon  
Goss  
Gord  
Goss  
Gree  
Groth  
Grav  
Grav  
Grav  
Grav  
Gratt  
Grat  
Grant  
Gratt  
Grah  
Greele

## APPROPRIATION STOCK—Continued.

2d. App. Stock.	NAMES.	1st. App. Stock.	2d. App. Stock.
2000 00	Girard Michel .....		
4000 00	Gilet & Co. ....		\$2000 00
	Girard Joseph.....		2000 00
	Girard Charles.....		2000 00
	Girard Louis.....		2000 00
	Girard A.....		2000 00
	Girard O.....		2000 00
	Gingras A.....		2000 00
	Giroux Joseph.....	\$1000	2000 00
	Gibeau O.....		2000 00
	Gibeau C.....		2000 00
000 00	Giroux L. O.....		2000 00
	Giguère Joseph.....	1000 00	
	Giroux Gilbert.....	1000 00	4000 00
	Globensky J. E.....	1000 00	
	Gohier A.....	1000 00	
	Godmire Félix.....		2000 00
	Gosselin O.....	1000 00	
	Goulet J. E.....	1000 00	
	Goff E. H.....	1000 00	
	Gonnon Patrick.....	1000 00	
	Gosselin Cléophas.....	1000 00	
	Gordan Robert.....	3000 00	6000 00
	Gosselin Eugénie.....	1000 00	
	Green Thomas.....		2000 00
	Grothe J. A.....	1000 00	
	Gravel J. N.....	2000 00	
	Gravel F.....	1000 00	
	Gravel Hortense.....	3000 00	
	Gravel Edmond.....	2000 00	
	Gratton Noël.....	3000 00	
	Gratton Alphonse.....		2000 00
	Graidy James.....		4000 00
	Grant L.....		2000 00
	Gratton Moise.....		2000 00
	Graham P.....		2000 00
	Greeley Cath.....		2000 00

## APPROPRIATION STOCK—Continued.

NAMES	1st. App. Stock.	2d. App. Stock.
Grothé L. O.....		\$2000 00
Green Mary.....		2000 00
Groleau Frs.....		10000 00
Guerin Ferdinand.....		2000 00
Guerin Ovide.....		2000 00
Guerin Nap.....		2000 00
Guilbault Joseph.....		2000 00
Guy M. C. E.....		2000 00
Guérin Alphonse.....		2000 00
Guibord G.....		2000 00
Guy Paul sin.....	\$1000 00	
Guy Paul jun.....	1000 00	
Guy E.....	1000 00	
Guy Hyp.....	2000 00	
Guy Octave.....	2000 00	
Guertin Narcisse.....	2000 00	
Guy Evelina.....	1000 00	
Garnier C.....		2000 00
Hair Jane.....		2000 00
Hardy Rev.....		2000 00
Hanly Thomas.....		2000 00
Handerson A. H.....		2000 00
Hanter Jacob.....		2000 00
Hedge Henri.....		2000 00
Hébert Eugène.....		2000 00
Héту Noël.....		2000 00
Héту G.....		2000 00
Héту L. O.....	1000 00	
Hébert Pascal.....	1000 00	
Hébert Olivier.....	2000 00	
Howghes N. H.....		2000 00
Hintar A.....		2000 00
Hogue Elie.....		2000 00
Hogue Moïse.....		2000 00
Hogue Léon.....		2000 00
Horrison H.....		2000 00
Houle Eusèbe.....		2000 00

Ho  
Ho  
Hu  
Hu  
Hu  
Jan  
Jac  
Jar  
Jac  
Jas  
Jac  
Jac  
Jae  
Jett  
Joli  
Jod  
Jod  
Jobi  
Jobi  
Jolie  
Jolie  
Joye  
Join  
Joub  
Jout  
Jobi  
Jolie  
Jobi  
Joya  
Kelly  
Keog  
Kelly  
Kenn  
Keog  
Kenn  
Kelly  
Kerr



APPROPRIATION STOCK—*continued.*

2d. App. Stock.	NAMES.	1st. App. Stock.	2d. App. Stock.
\$2000 00	Houle Edmond.....	.....	\$2000 00
2000 00	Houle Pierre.....	\$1000 00	4000 00
10000 00	Huber P.....	.....	4000 00
2000 00	Hurtubise Henri.....	.....	2000 00
2000 00	Hudon J.....	1000 00	.....
2000 00	Janson J. B.....	2000 00	.....
2000 00	Jacques L. A. G.....	1000 00	.....
2000 00	Jarest Irène.....	1000 00	.....
2000 00	Jacobi Ernest.....	1000 00	.....
.....	Jasmin Vineent.....	.....	2000 00
.....	Jacques André.....	.....	2000 00
.....	Jackson Marg.....	.....	2000 00
.....	Jackson James.....	.....	2000 00
.....	Jetté Augustin.....	.....	2000 00
2000 00	Joli Pierre.....	1000 00	6000 00
2000 00	Jodoin C. A.....	1000 00	.....
2000 00	Jodoin Timot.....	1000 00	.....
2000 00	Jobin Damase.....	1000 00	.....
2000 00	Jobin Tancrede.....	1000 00	.....
2000 00	Jolicœur George.....	3000 00	.....
2000 00	Jolicœur O.....	.....	4000 00
2000 00	Joyce R. J.....	.....	6000 00
2000 00	Joinet R.....	.....	2000 00
2000 00	Joubert Léon.....	.....	2000 00
2000 00	Joutras Jos.....	.....	2000 00
.....	Jobin Jos.....	.....	2000 00
.....	Jolicœur Théop.....	.....	4000 00
2000 00	Jobin E.....	.....	2000 00
2000 00	Joyal M.....	.....	2000 00
2000 00	Kelly John.....	.....	4000 00
2000 00	Keogh James.....	.....	2000 00
2000 00	Kelly Edouard.....	.....	2000 00
2000 00	Kennedy J. H.....	.....	2000 00
2000 00	Keogh Timot.....	.....	2000 00
2000 00	Kenny P. J.....	1000 00	.....
2000 00	Kelly John.....	2000 00	.....
.....	Kerrigan Richard.....	1000 00	.....
.....	.....	.....	.....

## APPROPRIATION STOCK—Continued.

NAMES.	1st. App. Stock.	2d. App. Stock.
Kerrigan Andrew.....	\$2000	
Kirk Rose.....	1000	
Krause Adolp.....	1000	
Laporte J. M.....	2000	
Lamoureux Th.....	1000 00	2000 00
Langlois Charles.....	1000	
Labelle Félix.....	1000	
Ladouceur Basile.....	1000	
Lalonde François.....	1000	
Lane W.....	1000	
Labelle et Léveillé.....	1000	
Lamoureux Charles.....	6000 00	10000 00
Lauzon Félix.....	2000	
Lapierre Prince.....	2000	
Lamère Emélie.....	1000	
Lanciaux A.....	1000	
Langlois P.....	1000	
Lalonde F.....	1000	
Lanergan James.....	1000 00	2000 00
Lachance Nap.....	1000	
Labelle Joseph.....	3000 00	
Lalonde Célestin.....	6000 00	
Lamoureux Cyrille.....	2000 00	
Lamarre Jos. Nap.....	1000 00	
Lapierre A.....	2000 00	
Lareau E.....	1000 00	
Lamoureux P.....	1000 00	
Laverdun Joseph.....	1000 00	
Laforest Sophie.....	1000 00	
Lapointe Aglae.....	1000 00	
Lapointe Zotique.....	1000 00	
Lafrance Louis.....	1000 00	
Langevin Damaso.....	1000 00	
Lamoureux L.....	2000 00	
Labelle A.....	1000 00	
Lamalice P. E.....	2000 00	
Laporte dit St. George..	1000 00	

## APPROPRIATION STOCK—Continued.

App. Stock.	NAMES.	1st. App. Stock.	2d. App. Stock.
	Lamère Narcisse.....	\$1000 00	
	Lapointe Pierre.....	1000 00	
	Lalonde Alfred.....	3000 00	4000 00
00 00	Laferrière Louis.....	1000 00	
	Laurin Joseph.....	1000 00	
	Lauzon Léopold.....	1000 00	
	Larne F. O. A.....	1000 00	
	Lalumière P.....	1000 00	
	Larocque G.....	1000 00	
	Laplante Charles.....	2000 00	
00 00	Lamarche Léon.....	2000 00	
	Lancey C. D.....	1000 00	
	Labelle O.....	2000 00	
	Lamontagne Léandre.....	1000 00	
	Lamontagne Georges.....	1000 00	
	Langlois Edouard.....	1000 00	
	Lawson Wm.....	1000 00	
00 00	Lacombe A.....	1000 00	
	Lapointe Sophie.....	1000 00	
	Lamarche L. O.....	2000 00	
	Lachapelle Marcel.....	2000 00	2000 00
	Labelle Joseph.....		2000 00
	Laforge Dme.....		2000 00
	Lauzon Jules.....		2000 00
	Lamère Philomène.....		2000 00
	Labelle Grégoire.....		2000 00
	Labelle François.....		2000 00
	Lamoureux Hormisdas.....		2000 00
	Lapierre E.....		2000 00
	Lafontaine Joseph.....		2000 00
	Lavoie Octave.....		2000 00
	Lavallée L. M.....		4000 00
	Lalumière E.....		2000 00
	Lafortune Catherine.....		2000 00
	Lanergan Elizabeth.....		2000 00
	Labonté David.....		2000 00
	Labelle Alphonse.....		2000 00



## APPROPRIATION STOCK—Continued.

d. App. Stock.	NAMES.	1st. App. Stock.	2d. A pp. Stock.
2000 00	Lecourt J. H .....		\$4000 00
2000 00	Lépine George .....		2000 00
2000 00	Leduc P. ....		6000 00
2000 00	Leclair O. ....		2000 00
2000 00	Lebean François .....		4000 00
2000 00	Levestu J. N. ....		2000 00
2000 00	Leclaire Joseph .....		2000 00
2000 00	Leclaire Jos .....		2000 00
2000 00	Lemieux Marcel .....		2000 00
4000 00	Leclaire L. ....		4000 00
6000 00	Lemire H. ....		2000 00
2000 00	Leblanc Jos. H. ....		2000 00
2000 00	Lespérance L .....		2000 00
8000 00	Leblanc Nap. ....		2000 00
2000 00	Leblanc Joseph .....		2000 00
2000 00	Leduc Eustache .....		2000 00
2000 00	Leroux Zotique .....	\$1000 00	
2000 00	Léveillé J. E. ....		2000 00
2000 00	Leblanc F. ....		2000 00
2000 00	Leblanc J. B. ....		2000 00
6000 00	Lépine Charles .....		2000 00
2000 00	Legault J. B, jun .....		2000 00
2000 00	Legendre Louis .....		6000 00
2000 00	Lépine Stanislas .....		2000 00
2000 00	Lépine J. B .....		4000 00
2000 00	Lépine Joseph .....		2000 00
2000 00	Leduc N. Dello .....		2000 00
2000 00	Leduc P .....		2000 00
4000 00	Lefebvre H .....		2000 00
2000 00	Lefebvre E. ....		2000 00
2000 00	Leblanc François .....	1000 00	
2000 00	Leblanc Stephen .....	1000 00	
4000 00	Lévesque P, sin .....	3000 00	
2000 00	Lespérance Joseph .....	1000 00	
2000 00	Lespérance Alphonse .....	2000 00	
2000 00	Lemieux Norbert .....	1000 00	
2000 00	Lenoir F. X. ....	1000 00	

## APPROPRIATION STOCK—Continued.

NAMES.	1st. App. Stock.	2d. App. Stock.
Léonard Jacques.....	\$1000 00	.....
Legalet J. E.....	1000 00	.....
L'espérance Auguste.....	2000 00	.....
Leclaire Benjamin.....	1000 00	.....
Léonard Jacques, sin.....	1000 00	.....
Leroux Zotique.....	2000 00	.....
Lèvesque Pr, jun.....	1000 00	.....
Léblanc Isaïe.....	1000 00	.....
Lemieux Rose et Marie.....	1000 00	.....
Lébeau A.....	1000 00	.....
Lemieux Marcel.....	1000 00	.....
Leclaire Isidore.....	4000 00	.....
Legrif F.....	.....	2000 00
Limoges J. S.....	1000 00	.....
Lippe Camillo.....	1000 00	.....
Loban John.....	.....	2000 00
Lorge & Co.....	.....	4000 00
Lorin A.....	.....	2000 00
Longpré Virginie.....	1000 00	.....
Longpré Joseph.....	1000 00	8000 00
Lucier E.....	1000 00	.....
Lusignan N.....	1000 00	.....
Lymburner M. E.....	.....	2000 00
Martel François.....	.....	2000 00
Martineau Eugène.....	.....	8000 00
Marceau Joseph.....	.....	2000 00
Marechal J. B. D.....	.....	4000 00
Martineau G.....	.....	2000 00
Marcier E. Dme.....	.....	2000 00
Marceau M. C. Dme.....	.....	2000 00
Mardis C.....	.....	2000 00
Malette O.....	.....	2000 00
Marchi A. J.....	.....	2000 00
Marchand G.....	.....	2000 00
Malieu D.....	.....	2000 00
Magnan B.....	.....	2000 00
Marceau Arthur.....	.....	2000 00

## APPROPRIATION STOCK—Continued.

2d. App. Stock.	NAMES.	1st. App. Stock.	2d. App. Stock.
	Maurice C.....		\$2000 00
	Madden Elizabeth.....		2000 00
	Marsan Clor.....	\$1000 00	
	Maurice J. A.....		
	Manahan Philomène.....	1000 00	
	Magnan Joseph.....	1000 00	
	Mahéu Ant.....	1000 00	
	Mathieu L.....	1000 00	
	Mathieu E.....	1000 00	
	Martineau Israel.....	1000 00	
	Marineau B.....	1000 00	
	Marineau A.....	1000 00	
2000 00	Malbœuf J. B.....	1000 00	
	Malette Siméon.....	2000 00	
	Major H. Delle.....	1000 00	
2000 00	Major Charles Dme.....	1000 00	
4000 00	Major Charles.....	1000 00	
2000 00	Mathon Louise.....	1000 00	
	Marois Pr.....	1000 00	
8000 00	Martin J. B. O.....	1000 00	
	Marchand J. C.....	2000 00	
	Martelle Joseph.....	2000 00	
2000 00	Magnan Joseph.....	2000 00	
2000 00	Magnand A.....	1000 00	
8000 00	Major F. X.....	1000 00	
2000 00	Martin James.....	1000 00	
4000 00	McAfee Robert.....	2000 00	
2000 00	McGuirk M.....	1000 00	
2000 00	McCormick James.....	1000 00	
2000 00	McDonnald Thomas.....	2000 00	
2000 00	McCormick Thomas.....	1000 00	2000 00
2000 00	McNaughton A.....	1000 00	
2000 00	McMenamin Patrick.....	2000 00	2000 00
2000 00	McBrid Robert.....		2000 00
2000 00	McMullen Edgar.....		4000 00
2000 00	McQuaid John.....		2000 00
2000 00	McGeean E.....		2000 00

## APPROPRIATION STOCK—Continued.

NAMES.	1st. App. Stock.	2d. App. Stock.
McNaughton John .....		\$2000 00
McQuillan H. ....		000 00
McDonald W. W. ....		2000 00
McGlyn George.....		2000 00
McDonald Milton .....		2000 00
Menard C. J.....		2000 00
Mercure Prospère.....		2000 00
Merrill A. I. C .....	\$3000 00	
Meunier Charles.....	4000 00	
Meunier A.....	2000 00	8000 00
Meunier Wilfred. ....	2000 00	
Menard L. B.....	5000 00	
Ménard J. B ... ..	1000 00	
Ménard Elzéar.....	1000 00	
Ménard F.....	1000 00	
Ménard Louis .....		2000 00
Meloche Joseph.....		2000 00
ménard P. B.....		2000 00
Ménard P.....		2000 00
Menard L.....		4000 00
Mercier J. B. ....		2000 00
Meloche J. B. ....		2000 00
Mercier J. A.....		2000 00
Meck H.....		2000 00
Miller G. A.....	1000 00	
Michaud J. B .....	4000 00	
Mignault Nap.....		2000 00
Mount J. W.....	3000 00	
Moreau Albina.....	1000 00	
Morrisseau Edouard.....	1000 00	
Mongeau J. N.....		4000 00
Morin J. H.....		2000 00
Mosse J. B .....		2000 00
Mongnion J.....		2000 00
Moreau M.....		2000 00
Monceau A .....		2000 00
Morin L.....		2000 00



## APPROPRIATION STOCK—Continued.

. App. stock.	NAMES.	1st. App. Stock.	2d. App. Stock.
00 0	Montmarquet Nap .....		\$4000 00
00 00	Moisan P. L. ....		2000 00
00 00	Moquin Caroline.....	\$1000 00	
00 00	Murray Wm.....	1000 00	
00 00	Mullagan James.....	1000 00	
00 00	Murphy C. J.....	3000 00	
00 00	Mullen John.....	1000 00	
.....	Murphy Patrick.....	1000 00	
.....	Murphy Thomas B .....	6000 00	
00 00	Murphy John.....	4000 00	
.....	Mullen James .....		4000 00
.....	Murphy J. G.....		2000 00
.....	Nantel Antoine N.....	1000 00	
.....	Naigle Maurice .....	2000 00	2000 00
.....	Naulin H .....	2000 00	
00 00	Nault Olivier.....	2000 00	
00 00	Narbonne A.....		2000 00
00 00	Navet Joseph .....		2000 00
00 00	Normand J. Dme.....	1000 00	
00 00	Norman Wm.....		2000 00
00 00	Noël On .....		2000 00
00 00	Noël Thomas.....		2000 00
00 00	Normandin B.....		2000 00
00 00	Normandeau B.....		2000 00
.....	Normand Louis.....		2000 00
00 00	O'Brien Cornelius.....		4000 00
.....	O'Brien D.....	1000 00	
.....	O'Brien John.....	1000 00	
.....	O'Connell John.....		2000 00
.....	O'Gorman James.....		2000 00
00 00	O'Gorman N.....		2000 00
00 00	O'Keef Mary.....	1000 00	2000 00
00 00	Ouellette David.....		2000 00
00 00	Olivon Victor.....		2000 00
00 00	Ouimette A.....	1000 00	
00 00	Ouimette G.....	1000 00	
00 00	Ouimette Damase.....	1000 00	

## APPROPRIATION STOCK—Continued.

NAMES.	1st. App. Stock.	2d App. Stock.
Ouimette Nap .....	\$1000 00	.....
Ouimette J. B .....	1000 00	.....
Ouimette Aldérie... ..	1000 00	4000 00
O'Reilly B .....	.....	2000 00
Ostelli Joseph.....	.....	8000 00
Paterson Sarah.....	1000 00	.....
Parceval Joseph .....	.....	2000 00
Paradis Hercule.....	.....	2000 00
Paquin C.....	.....	2000 00
Paquette George.....	.....	2000 00
Paxton Samuel.....	.....	2000 00
Paquette P. E.....	.....	2000 00
Paquette Joseph .....	1000 00	.....
Papineau J. M.....	2000 00	.....
Painchaud F.....	1000 00	.....
Pari Joseph .....	1000 00	.....
Papineau N.....	6000 00	.....
Paquette Vincent .....	1000 00	.....
Payette Pr.....	1000 00	.....
Payette Louis .....	2000 00	.....
Payette A.....	1000 00	.....
Payette O .....	2000 00	.....
Payette J. B.....	2000 00	.....
Paterson Max.....	1000 00	.....
Perrault Urgèle.....	2000 00	2000 00
Pepin F. X.....	1000 00	.....
Perrault Ant .....	1000 00	.....
Perron Narc.....	1000 00	.....
Perrault Clovis .....	.....	.....
Pelletier François.....	.....	2000 00
Perras Damase.....	.....	2000 00
Perras Clément.....	.....	2000 00
Persival Wm .....	.....	2000 00
Pételle Régis.....	.....	2000 00
Perrault D.....	.....	2000 00
Perrault L. W.....	.....	2000 00
Perry James M.....	.....	2000 00

Pe  
Pé  
Pe  
Pe  
Ph  
Ph  
Ph  
Pic  
Pic  
Pig  
Pig  
Pic  
Pla  
Pla  
Po  
Poi  
Pol  
Poi  
Por  
Poi  
Poi  
Poi  
Poi  
Poi  
Poi  
Poi  
Pou  
Poi  
Pou  
Pre  
Pre  
Pro  
Pro  
Pro  
Prud  
Pre  
Pre  
P. ju  
Prud  
Prov  
Préf

## APPROPRIATION STOCK—Continued.

App. ck.	NAMES.	1st. App. Stock.	2d. App. Stock.
	Pell A. J.....	\$1000 00	
0 00	Perrault Joseph.....	1000 00	
0 00	Perrault Jules.....	1000 00	
0 00	Pelland B. E.....	2000 00	
	Philippe J. L.....	2000 00	
0 00	Philie A.....		\$2000 00
0 00	Phaneuf C. H.....	1000 00	
0 00	Piché Joseph.....	1000 00	
0 00	Piché Adèle.....	1000 00	
0 00	Pigeon Laurent.....	4000 00	2000 00
0 00	Pigeon Louis.....	1000 00	2000 00
	Picking Charles.....		2000 00
	Plante P. E.....	2000 00	
	Plamondon Th.....		2000 00
	Poutré F. E.....	2000 00	
	Poitras A.....		2000 00
	Poliwoka E.....		2000 00
	Poirien Elzéar.....		2000 00
	Portelance J. N.....		2000 00
	Poitevin Victor.....	1000 00	
	Poitevin J. B.....	1000 00	
	Poirier Joseph.....	3000 00	
	Poutre Edouard.....	1000 00	2000 00
0 00	Poisseau Marceline.....	1000 00	
	Poupart Dr.....	3000 00	
	Prevost Sinâie.....	1000 00	8000 00
	Préfontaine Euclide.....		2000 00
0 00	Provost Elie.....		2000 00
0 00	Provost Joseph.....		2000 00
0 00	Provost C.....		2000 00
0 00	Prud'homme L. J.....		2000 00
0 00	Prevost A & Co.....		2000 00
0 00	Prevost Elise.....		2000 00
0 00	Prud'homme Joseph.....	1000 00	
0 00	Prud'homme A.....	1000 00	
0 00	Provost Ir.....	1000 00	
	Préfontaine R.....	1000 00	2000 00

## APPROPRIATION STOCK—Continued.

NAMES.	1st. App. Stock.	2d. App. Stock.
Provost Arsène .....	\$1000 00	.....
Provost Adolphe.....	1000 00	.....
Procton Suz .....	1000 00	.....
Provost A.....	1000 00	.....
Prieur Jos.....	1000 00	.....
Prefontaine Eugène.....	2000 00	\$4000 00
Quinn P.....	.....	2000 00
Quevillon G C .....	.....	2000 00
Quinn James.....	1000 00	.....
Quevillon Joseph .....	1000 00	.....
Quintin Louis.....	2000 00	.....
Quinn Michael.....	4000 00	28000 00
Quinn M. T.....	1000 00	.....
Quinn W. D.....	1000 00	.....
Quintal N.....	5000 00	4000 00
Quinn St.....	1000 00	.....
Quinn F. A.....	21000 00	56000 00
Racine J. B.....	2000 00	.....
Rassicot Joseph.....	3000 00	2000 00
Raphael Wm .....	1000 00	.....
Racine Louis .....	.....	2000 00
Racette & Larivière.....	.....	2000 00
Rassicot D.....	.....	4000 00
Raymond Adolphe.....	.....	2000 00
Rassicot C.....	.....	2000 00
Renaud Joseph.....	.....	2000 00
Renaud Ulric.....	.....	2000 00
Renaud Georges.....	.....	2000 00
Rhéaume E.....	.....	4000 00
Richard Louis.....	.....	2000 00
Riendeau F.....	.....	2000 00
Ritchot M.....	.....	2000 00
Rivet Paul.....	.....	2000 00
Rienhardt F.....	.....	2000 00
Riel Jos.....	.....	2000 00
Rivés Jos .....	.....	2000 00
Ricard F. J. D.....	.....	2000 00

Ri  
Ri  
Ri  
Ri  
Ro  
Ro  
Ro  
Ro  
Ro  
Ro  
Ro  
Ro  
Ro  
Res  
Roy  
Roy  
Rot  
Rob  
Roy  
Roc  
Roy  
Rou  
Rot  
Ros  
Roy  
Roy  
Ryd  
Saln  
Saln  
Sara  
Sara  
Scal  
Scof  
Scot  
Sene

## APPROPRIATION STOCK—Continued.

App. stock.	NAMES.	1st. App. Stock.	2d App. Stock.
	Rives Louis .....	\$1000 00	
	Rives Olivier.....	1000 00	
	Rives Georges .....	2000 00	
	Rivet Jules.....	2000 00	6000 00
000 00	Roman Henry.....	4000 00	
000 00	Robert Olivier.....	1000 00	
000 00	Robb John .....	3000 00	8000 00
	Robin Jos.....	1000 00	
	Robinson John.....	2000 00	
	Robin J. Dme.....	1000 00	
000 00	Roland O.....	1000 00	
	Roland G. L.....	1000 00	
	Rcse Théop.....	1000 00	
000 00	Roy J. H. Dr.....	6000 00	
	Roy Ulric.....	1000 00	
000 00	Rourk F.....	1000 00	
	Robert Léandre.....	7000 00	4000 00
000 00	Roy B .....	1000 00	
	Rolland Alf.....		2000 00
000 00	Rohland F.....		2000 00
000 00	Roy H.....		2000 00
000 00	Rock Louis.....		4000 00
000 00	Roy P. H.....		2000 00
000 00	Rousseau Toussaint.....		2000 00
000 00	Rottot J. P. Dr.....		2000 00
000 00	Ross A. Dme.....		2000 00
000 00	Roy L. H.....		2000 00
000 00	Roy A. T.....		2000 00
000 00	Ryder Patrick.....	1000 00	2000 00
000 00	Salmon G. Dme.....	1000 00	
000 00	Salmon Etienne.....		2000 00
000 00	Sarault J. C.....		2000 00
000 00	Sarault M. T. Dme .....		2000 00
000 00	Scaly John.....	1000 00	
000 00	Scofile Chs.....	1000 00	
000 00	Scott Wm.....	1000 00	
000 00	Senez Stanislas.....	1000 00	2000 00

## APPROPRIATION STOCK—Continued.

NAMES.	1st. App. Stock.	2d. App. Stock.
Senécal E .....		\$2000 00
Senécal J. B.....		2000 00
Senéz Théoph .....		2000 00
Sevigny Alf.....		2000 00
Senécal Toussaint.....	\$5000 00	2000 00
Seybold Phil .....	2000 00	
Seyen Dos.....	2000 00	
Serry Rachel.....	1000 00	
Senecal H .....		4000 00
Sharp Ed.....	2000 00	2000 00
Silverman Louis.....		2000 00
Sicotte Chs.....	1000 00	2000 00
Slack R .....	3000 00	
Smith R. H.....		2000 00
Smith R. J.....		2000 00
Smith Jane.....	4000 00	2000 00
Smith Thomas .....	1000 00	
Smith C. F.....	3000 00	
S. M. de la Présentation.....		4000 00
St. Cyr C. M.....		2000 00
Ste. Marie Joseph.....		2000 00
Stanhouse James.....		2000 00
St. Maurice J .....		2000 00
St. Onge C. Dme.....		2000 00
Steward James.....		2000 00
Straham James .....		2000 00
St. Arneau U. H. ....		2000 00
St. Ives Ant.....		2000 00
St. Charles F. X.....		2000 00
St. Jean Odille.....		2000 00
St. Denis E. M.....		16000 00
St. Denis E.....	1000 00	
Stableton Brig .....	1000 00	
Sutherland Augus.....	1000 00	4000 00
Sulley Mary .....	1000 00	
Taillon C.....	2000 00	
Tessier L.....		2000 00

Tel  
 Tes  
 Tel  
 Tes  
 Tell  
 Thi  
 Thi  
 The  
 Tho  
 The  
 Tho  
 Tho  
 Thu  
 Tren  
 Tren  
 Truc  
 Truc  
 Truc  
 Tran  
 Trud  
 Ture  
 Turb  
 Ture  
 Turg  
 Ture  
 Oure  
 Tuff  
 Turg  
 Turg  
 Tuff  
 Unde  
 Vand  
 Valié  
 Vann  
 Vann  
 VanB  
 Vallé

## APPROPRIATION STOCK—Continued.

App. ck.	NAMES.	1st. App. Stock.	2d. App. Stock.
000	Tellier Urg.....	\$1000 00	.....
000	Tessier Elisé.....	1000 00	.....
000	Tellemosse L.....	1000 00	.....
000	Tessier Mathias.....	2000 00	.....
0 00	Tellemosse L. W.....	6000 00	\$2000 00
.....	Thibeau Jean.....	1000 00	.....
.....	Thibeau Joseph.....	1000 00	.....
.....	Therien Ernest.....	1000 00	.....
0000	Thomson J. R.....	.....	.....
0000	Therriault O.....	.....	2000 00
0000	Thomson James.....	.....	2000 00
0000	Thomson Joseph.....	.....	8000 00
.....	Thumber D.....	.....	4000 00
0000	Tremblay Noël.....	.....	2000 00
0000	Tremblay L.....	.....	2000 00
0000	Trudeau N.....	.....	2000 00
.....	Trudeau Ls.....	.....	2000 00
0000	Trudeau Marceline.....	2000 00	.....
0000	Tranchemontagne Ls.....	2000 00	2000 00
0000	Trudelle F. X. A.....	.....	2000 00
0000	Turcotte Joseph.....	1000 00	.....
0000	Turber D.....	1000 00	.....
0000	Turcotte J. W.....	2000 00	.....
0000	Turgeon Edmond.....	.....	4000 00
0000	Turcot Joseph.....	.....	2000 00
0000	Ourcot D.....	.....	2000 00
0000	Tuff Wm.....	.....	2000 00
0000	Turgeon Césaire.....	.....	2000 00
0000	Turgeon H. Dme.....	.....	4000 00
0000	Tuff David.....	.....	2000 00
0000	Underdown J.....	.....	2000 00
.....	Vandandaigle Joseph.....	1000 00	6000 00
.....	Vallée Virginie.....	1000 00	.....
0000	Vannier Amédée.....	2000 00	.....
.....	Vannier E.....	7000 00	.....
0000	VanBueren L. F.....	.....	2000 00
0000	Vallée Michel.....	.....	2000 00

APPROPRIATION STOCK—*Continued.*

NAMES.	1st. App. Stock.	2d. App. Stock.
Valkert A.....		\$2000 00
Valkert E.....		2000 00
Vauthier Philippe.....		2000 00
Vallière François.....		2000 00
Vernon J. A.....		2000 00
Viau Nap.....		2000 00
Viau C. T.....		4000 00
Villeneuve N.....		2000 00
Vincent J. B.....		2000 00
Viger F. E.....		2000 00
Viger Joseph.....		2000 00
Vineberg Sarah.....	\$1000 00	
Vincemt Pascal.....	1000 00	
Vincent J. L.....	2000 00	
Vincént J. B.....	1000 00	
Voligny F. X.....	1000 00	
Walker F. W.....		2000 00
Walker J. A.....		2000 00
Walker A.....		20000 00
Wafer James.....		2000 00
Walker Thomas.....		2000 00
Watking Thomas.....		2000 00
Wertby Ellen.....		2000 00
Wheeler F.....	3000 00	
Wiseman Wm.....	2000 00	
Willette J. T.....	2000 00	2000 00
Wilson Hortense.....	1000 00	
Wilson Henriette.....	1000 00	
Willace C. R.....	1000 00	
Wilson R. W.....		2000 00
Wollhuter Alb.....		2000 00
Woodlock R.....		2000 00
Dragon Isidore.....	1000 00	
Garnier C.....		2000 00
Morphy J. C.....	3000 00	
Maurice J. A.....	1000 00	8000 00
Primeau O.....		2000 00

Ru  
 Vi  
 Vi  
  
 Hu  
  
 Bo  
 Bo  
 Clé  
 Cou  
 Com  
 Déc  
 Dea  
 Dm  
 Don  
 Gag  
 Hug  
 Lan  
 McC  
 McE  
 Mel  
 Met  
 O' B  
 One  
 Papi  
 Rya  
 Rog  
 Thor  
 Van  
 Van  
 Woo



APPROPRIATION STOCK—Continued.

NAMES.	1st. App. Stock.	2d. App. Stock.
Rutherford John.....	1000 00	.....
Villeneuve Joseph.....	1000 00	.....
Vincent Max .....	2000 00	.....

NAMES	ACCUMULATE STOCK.	CLASS A.
Hughet Latour Théopile.....		4000.00

NAMES.	PERMANENT STOCK.
Bourdon D .....	\$3600 00
Bouchard Ol.....	200 00
Clément Désiré .....	800 00
Coupal Am.....	2000 00
Conway James.....	500 00
Décary F.....	500 00
Deacon George.....	200 00
Dumesnil A.....	1000 00
Donnelly Patrick.....	500 00
Gagnon Alex.....	500 00
Hughet Latour Théop.....	600 00
Lamontagne Trefflé .....	300 00
McCarthy de Lery Louise.....	200 00
McEntyre John.....	300 00
Melançon Moïse.....	100 00
Methot Marie .....	400 00
O'Brien James.....	500 00
Oneil Patrick.....	300 00
Papineau G. B.....	300 00
Ryan Michael.....	500 00
Rogers H. J. H. ....	300 00
Thompson Jane.....	240 00
Vandenkoorhuysse A.....	100 00
Vandandaigne J .....	400 00
Woodlock F .....	800 00

