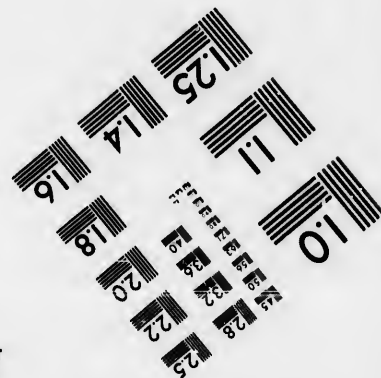
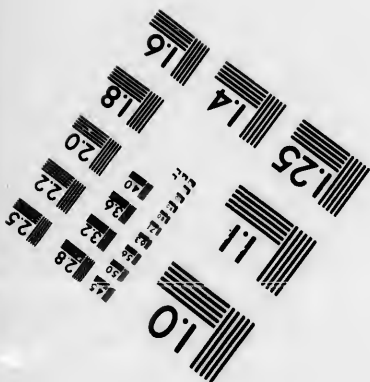
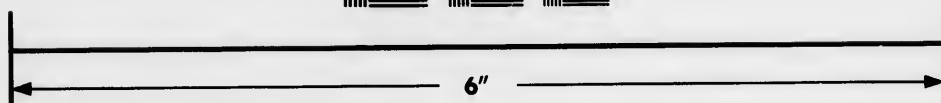
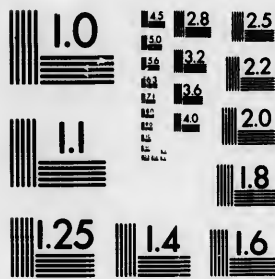


**IMAGE EVALUATION
TEST TARGET (MT-3)**



**Photographic
Sciences
Corporation**

23 WEST MAIN STREET
WEBSTER, N.Y. 14580
(716) 872-4503

28
25
22
20
18

**CIHM/ICMH
Microfiche
Series.**

**CIHM/ICMH
Collection de
microfiches.**



Canadian Institute for Historical Microreproductions / Institut canadien de microreproductions historiques

11
10
8

© 1985

The copy filmed here has been reproduced thanks to the generosity of:

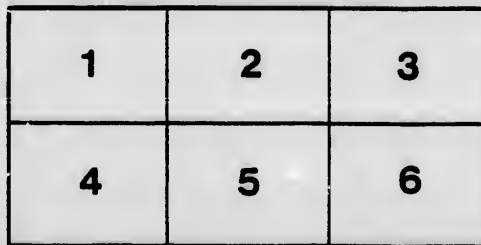
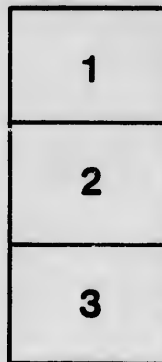
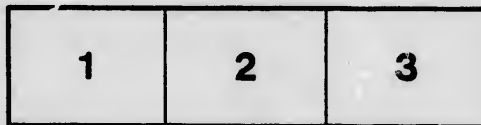
D. B. Weldon Library
University of Western Ontario
(Regional History Room)

The images appearing here are the best quality possible considering the condition and legibility of the original copy and in keeping with the filming contract specifications.

Original copies in printed paper covers are filmed beginning with the front cover and ending, on the last page with a printed or illustrated impression, or the back cover when appropriate. All other original copies are filmed beginning on the first page with a printed or illustrated impression, and ending on the last page with a printed or illustrated impression.

The last recorded frame on each microfiche shall contain the symbol \rightarrow (meaning "CONTINUED"), or the symbol ∇ (meaning "END"), whichever applies.

Maps, plates, charts, etc., may be filmed at different reduction ratios. Those too large to be entirely included in one exposure are filmed beginning in the upper left hand corner, left to right and top to bottom, as many frames as required. The following diagrams illustrate the method:



L'exemplaire filmé fut reproduit grâce à la générosité de:

D. B. Weldon Library
University of Western Ontario
(Regional History Room)

Les images suivantes ont été reproduites avec le plus grand soin, compte tenu de la condition et de la netteté de l'exemplaire filmé, et en conformité avec les conditions du contrat de filmage.

Les exemplaires originaux dont la couverture en papier est imprimée sont filmés en commençant par le premier plat et en terminant soit par la dernière page qui comporte une empreinte d'impression ou d'illustration, soit par le second plat, selon le cas. Tous les autres exemplaires originaux sont filmés en commençant par la première page qui comporte une empreinte d'impression ou d'illustration et en terminant par la dernière page qui comporte une telle empreinte.

Un des symboles suivants apparaîtra sur la dernière image de chaque microfiche, selon le cas: le symbole \rightarrow signifie "A SUIVRE", le symbole ∇ signifie "FIN".

Les cartes, planches, tableaux, etc., peuvent être filmés à des taux de réduction différents. Lorsque le document est trop grand pour être reproduit en un seul cliché, il est filmé à partir de l'angle supérieur gauche, de gauche à droite, et de haut en bas, en prenant le nombre d'images nécessaire. Les diagrammes suivants illustrent la méthode.

rrata
to

peiture,
n à

32X

DEAR SIR,—

The rapid increase of business in Chancery shews that the Court in Toronto is overburdened. Possessing ability equal to any in the country, and exhibiting the most untiring industry, it is apparent that the Chancellor and Vice-Chancellors are pressed with labor which should not be imposed; they exert themselves to the utmost, and still the business of the Court is in arrear.

It is thought that a large amount of routine matters, and of business of comparatively small importance, might, with perfect safety, be committed to the Masters and Deputy Registrars—subject, of course, to appeal to the Court above—making these Officers, in effect, analogous to the County Judges.

It is believed that the Court would cheerfully avail themselves of a safe and proper mode of transferring their duties in such matters to those professional men who, with due caution, have been appointed by the Court, Masters and Deputy Registrars.

We, (though possessing no proper authority, but depending on the sympathetic feeling of our brethren,) suggest that a meeting of the Masters and Deputy Registrars be held at the Queen's House in the city of Toronto, on the 12th February next for the purpose of deciding on a mode of action, to be approved of by the Court and the Government, by which the Superior Judges may be relieved from numerous minor duties—by which they may be enabled to deal more ^{directly} favourably with the important and heavy cases which distinguish this Court—and by which may be secured to ourselves a position at least equal to that of the County Judges—that of County Equity Judges—with fixed salaries.

We have mentioned an early date for this Meeting, because as Parliament will probably meet in February next, it is important that whatever be done should be done without delay.

Please reply to this immediately, either promising to meet, or expressing your views in writing.

Address,

WM. LEGGO, Esq.,
Master, Hamilton.

JANUARY 19th, 1860.

~~Richard~~ ~~J. P. Estlin~~

~~Wm. Leggo~~

Wm. Leggo
Shawley

