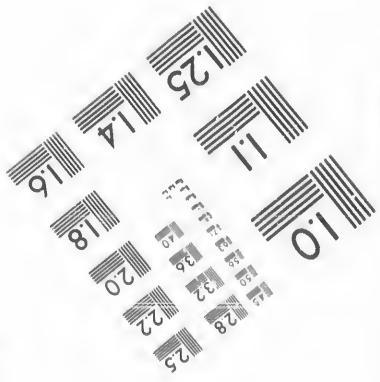
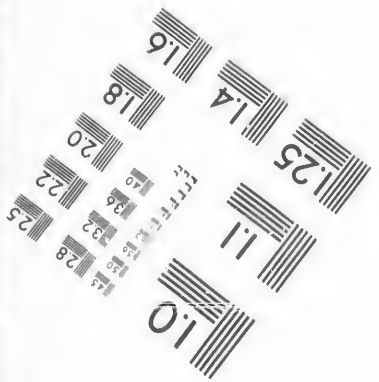
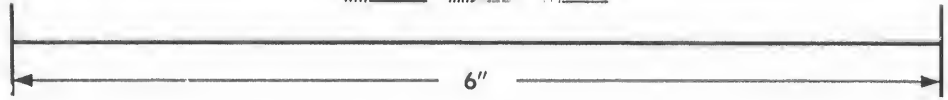
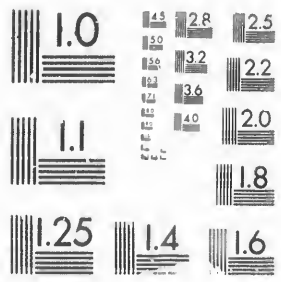


IMAGE EVALUATION
TEST TARGET (MT-3)



Photographic
Sciences
Corporation

23 WEST MAIN STREET
WEBSTER, N.Y. 14580
(716) 872-4503

**CIHM/ICMH
Microfiche
Series.**

**CIHM/ICMH
Collection de
microfiches.**



Canadian Institute for Historical Microreproductions / Institut canadien de microreproductions historiques

© 1987

Technical and Bibliographic Notes/Notes techniques et bibliographiques

The Institute has attempted to obtain the best original copy available for filming. Features of this copy which may be bibliographically unique, which may alter any of the images in the reproduction, or which may significantly change the usual method of filming, are checked below.

L'Institut a microfilmé le meilleur exemplaire qu'il lui a été possible de se procurer. Les détails de cet exemplaire qui sont peut-être uniques du point de vue bibliographique, qui peuvent modifier une image reproduite, ou qui peuvent exiger une modification dans la méthode normale de filmage sont indiqués ci-dessous.

- Coloured covers/
Couverture de couleur
- Covers damaged/
Couverture endommagée
- Covers restored and/or laminated/
Couverture restaurée et/ou pelliculée
- Cover title missing/
Le titre de couverture manque
- Coloured maps/
Cartes géographiques en couleur
- Coloured ink (i.e. other than blue or black)/
Encre de couleur (i.e. autre que bleue ou noire)
- Coloured plates and/or illustrations/
Planches et/ou illustrations en couleur
- Bound with other material/
Relié avec d'autres documents
- Tight binding may cause shadows or distortion
along interior margin/
La reliure serrée peut causer de l'ombre ou de la
distorsion le long de la marge intérieure
- Blank leaves added during restoration may
appear within the text. Whenever possible, these
have been omitted from filming/
Il se peut que certaines pages blanches ajoutées
lors d'une restauration apparaissent dans le texte,
mais, lorsque cela était possible, ces pages n'ont
pas été filmées.
- Additional comments:/
Commentaires supplémentaires:

- Coloured pages/
Pages de couleur
- Pages damaged/
Pages endommagées
- Pages restored and/or laminated/
Pages restaurées et/ou pelliculées
- Pages discoloured, stained or foxed/
Pages décolorées, tachetées ou piquées
- Pages detached/
Pages détachées
- Showthrough/
Transparence
- Quality of print varies/
Qualité inégale de l'impression
- Includes supplementary material/
Comprend du matériel supplémentaire
- Only edition available/
Seule édition disponible
- Pages wholly or partially obscured by errata
slips, tissues, etc., have been refilmed to
ensure the best possible image/
Les pages totalement ou partiellement
obscurcies par un feuillet d'errata, une pelure,
etc., ont été filmées à nouveau de façon à
obtenir la meilleure image possible.

This item is filmed at the reduction ratio checked below/
Ce document est filmé au taux de réduction indiqué ci-dessous.

10X	14X	18X	22X	26X	30X
<input type="checkbox"/>	<input type="checkbox"/>	<input type="checkbox"/>	<input checked="" type="checkbox"/>	<input type="checkbox"/>	<input type="checkbox"/>
12X	16X	20X	24X	28X	32X

The copy filmed here has been reproduced thanks to the generosity of:

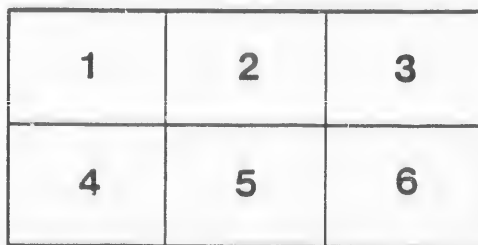
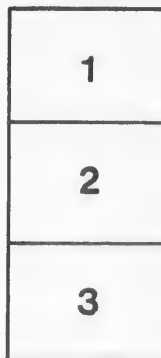
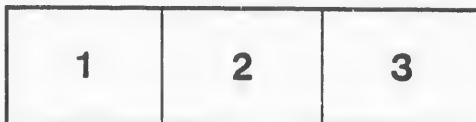
D. B. Weldon Library
University of Western Ontario
(Regional History Room)

The images appearing here are the best quality possible considering the condition and legibility of the original copy and in keeping with the filming contract specifications.

Original copies in printed paper covers are filmed beginning with the front cover and ending on the last page with a printed or illustrated impression, or the back cover when appropriate. All other original copies are filmed beginning on the first page with a printed or illustrated impression, and ending on the last page with a printed or illustrated impression.

The last recorded frame on each microfiche shall contain the symbol \rightarrow (meaning "CONTINUED"), or the symbol ∇ (meaning "END"), whichever applies.

Maps, plates, charts, etc., may be filmed at different reduction ratios. Those too large to be entirely included in one exposure are filmed beginning in the upper left hand corner, left to right and top to bottom, as many frames as required. The following diagrams illustrate the method:



L'exemplaire filmé fut reproduit grâce à la générosité de:

D. B. Weldon Library
University of Western Ontario
(Regional History Room)

Les images suivantes ont été reproduites avec le plus grand soin, compte tenu de la condition et de la netteté de l'exemplaire filmé, et en conformité avec les conditions du contrat de filmage.

Les exemplaires originaux dont la couverture en papier est imprimée sont filmés en commençant par le premier plat et en terminant soit par la dernière page qui comporte une empreinte d'impression ou d'illustration, soit par le second plat, selon le cas. Tous les autres exemplaires originaux sont filmés en commençant par la première page qui comporte une empreinte d'impression ou d'illustration et en terminant par la dernière page qui comporte une telle empreinte.

Un des symboles suivants apparaîtra sur la dernière image de chaque microfiche, selon le cas: le symbole \rightarrow signifie "A SUIVRE", le symbole ∇ signifie "FIN".

Les cartes, planches, tableaux, etc., peuvent être filmés à des taux de réduction différents. Lorsque le document est trop grand pour être reproduit en un seul cliché, il est filmé à partir de l'angle supérieur gauche, de gauche à droite, et de haut en bas, en prenant le nombre d'images nécessaire. Les diagrammes suivants illustrent la méthode.

VOTERS' LIST

FOR THE

TOWN OF INGERSOLL,

1884.

PRINTED AT THE CHRONICLE OFFICE, 100 N. AMES STREET.

Tow

VOTERS' LIST

FOR THE

TOWN OF INGERSOLL,

1884.

SCHEDULE OF POST OFFICES.

— 0 —
POST OFFICE.

No.

Ingersoll	1
Strathroy	2
London, Eng... ..	3
Woodstock	4
London, Ont.....	5
Toronto.....	6
Thamesford	7
St. Catherines.....	8
Ridgetown	9
Brantford	10
Hamilton	11
Chatham	12
Sarnia.....	13
Seaforth	14
Beachville	15
Winnipeg	16
Tilsenburg.	17
Orillia	18
Liverpool, Eng.....	19
East Saginaw	20
Denver, Col.....	21
Brooklyn, N. Y.	22
Otterville	23
Galt.....	24
Romeo, Mich.....	25
Houston, Texas	26

FIRST WARD.

PART I.

List of Persons entitled to Vote at both Municipal Elections
and Elections to the Legislative Assembly.

Polling Subdivision No. 1.

*Bounded by Thames Street on the East, River Thames on the South, and the
Township of North Oxford on the West and North.*

No. on Roll	NAMES OF THE VOTERS.	Jurors	Description of Property 'in respect of which the Voter is entitled to Vote.	Freehold or Household	Post Office Address.
2	Ashcroft Thos	J	2 N Henry	Householder	1
5	Bennett Jno		6 W Oxford Avenue	Freeholder	1
6	Bell Wm C	J	5, 6, 7, N Victoria	Freeholder	1
8	Burdick D S		1, 2, N Victoria	Freeholder	1
9	Bowman Wm	J	Part 10, Watterworth's survey	Freeholder	1
10	Byrne Lawrence		Part 9, 4th Con	Freeholder	1
11	Byrne Daniel		Part 9, 4th Con	Farmer's Son	1
12	Brown Michael	J	Part 9, 4th Con	Freeholder	1
15	Brown Thos		Part 9, S Victoria	Freeholder	1
16	Bailey James	J	Part 9, S Victoria	Householder	1
17	Byram John	J	11, 12, S Bell	Freeholder	1
18	Brophy John		12, 13, N Gravel Road	Freeholder	1
19	Buchanan John		21 S Bell	Freeholder	1
20	Buchanan James	J	Part 4, E McKeand	Freeholder	1
21	Bower Geo	J	15, 16, S Skye	Freeholder	1
22	Boyse E		3 S Innes	Freeholder	1
25	Brown Jno W (ool)		17 S Bell	Freeholder	1
26	Bishop Thos A	J	3, 4, W Union	Freeholder	1
28	Bailey John	J	3, 4, S Victoria	Householder	1
29	Bell Wallace	J	16 S Bell	Freeholder	1
193	Browett Joseph		Part 10, 11, W Thames	Freeholder	1

No. on Roll	NAMES OF THE VOTERS.	Jurors	Description of Property. in respect of which the Voter is entitled to Vote.	Freehold or Household.	Post Office Address.
33	Comiskey Thos	J	12 W Thames	Householder	1
35	Coyne Isaac	J	Part 8 W Thames	Householder	1
38	Cain Thos		3, 4, S Victoria	Householder	1
39	Choat David	J	Part 10, 11, W Thames	Freeholder	1
40	Crotty Richard		Part 10 W Thames	Freeholder	1
41	Crisp W T	J	12 and part 5, 6, W McKeand	Freeholder	1
42	Crawford G E S		Part 10, 11, W Thames	Freeholder	1
43	Cobbint Charles	J	9 to 12 W Ossian	Freeholder	1
44	Christopher George	J	Part 10, 11, W Thames	Freeholder	1
47	Carroll Thos		Blk T, Centre Part	Householder	1
48	Carling Peter	J	14, 15, S Haines	Freeholder	1
49	Clark Charles	J	Part 10, Watterworth's survey	Freeholder	1
51	Cullen John		E Part Blk T	Householder	1
52	Crotty Henry		3 to 8, N Victoria	Freeholder	1
53	Crotty James	J	3 to 8, N Victoria	Tenant	1
87	Campbell Hector		43 to 48, N Skye	Freeholder	1
139	Clark Armand		6, 7, S Victoria	Freeholder	1
160	Canavan John		10, 11, W Thames	Freeholder	6
209	Carroll Wm		17 N Haines	Freeholder	1
57	Devino G M	J	Eastwood's survey except No. 19	Householder	1
59	Dickens Jno C (col)		2 S Victoria	Householder	1
60	Delaney James	J	16 N Haines	Freeholder	1
61	Dutton Wm		Part 9, 10, W John	Freeholder	1
64	De Wolfe John		Part flats, W McKeand	Householder	1
66	Dougherty Isaiah	J	11 S Victoria	Householder	1
143	Duell Riley M		Part 5, W McKeand	Freeholder	1
68	Edwards Wm		E and D Watterworth's survey	Freeholder	1
70	Elwin Jas W		Part E, part Block T	Householder	1
72	Ely David	J	7 Fish survey	Householder	1
73	Evans Bazilla		17, 18, S Skye	Freeholder	1
75	Everett Joseph		9 N gravel road, 21 Skye	Householder	1
77	Fraser Colin		16 N Victoria	Freeholder	1
78	Fawcett Thomas jr		Part 7, 8, W John	Freeholder	2
79	Fawcett Thomas sr		Part 7, 8, W John	Householder	1
84	Friend Jas H	J	14, 15, W Thames	Householder	1
88	Fitzgerald Ed	J	43 to 48 N Skye, 59 S Jura Lane	Householder	1
236	Foy Wm		Part 10, 9, 8, 7, N Bell	Freeholder	1
98	Gardiner Peter		4 S Innes	Freeholder	1
90	Corrie Christopher	J	73, 74, E McKeand, 66 to 72, S Gravel Road	Freeholder	1
91	Golding Ebenezer		Part 10, 11, W Thames	Freeholder	1
92	Golding Henry	J	Blk E, Crotty survey	Freeholder	1
94	Grace Patrick		Part 10, 11, E John	Householder	1
96	Gee Harry		17, N Victoria	Householder	1
97	Graves Jonathan	J	1, 2, 3, N Bell, 10, 11, 12, S Henry	Freeholder	1
98	Grant J L	J	7, 8, 9, S Victoria	Freeholder	3
99	Garlick David		E part 12, S Victoria	Freeholder	1
101	Galer J C B	J	3 W Union	Householder	1
102	Green Moses (col)	J	40, 41, N Skye	Freeholder	1
104	Gannon Wm		5 W John	Householder	1
105	Garlick Thos	J	Part 9, W John	Householder	1

FIRST WARD—SUBDIVISION NUMBER ONE—Continued.

Post
Office
Address.

No. on Roll	NAMES OF THE VOTERS.	Jurors	Description of Property. in respect of which the Voter is entitled to Vote.	Freehold or Household.	Post Office Address.
1	108 Henderson David	J	Part 5, 6, W Thames	Householder	1
1	109 Hayward Wm	J	1, 2, 3, Fish survey	Freeholder	1
1	111 Hughes Benj (col)		12 Eastwood's survey, 1 N Gravel Road	Freeholder	1
1	112 Hammel Peter		16 to 20, E Ossian	Freeholder	1
1	114 Henderson Ed M	J	17 W John	Freeholder	1
1	119 Hingston Arthur	J	Part 5, E John	Householder	1
1	121 Hipkin T W		Part 9, W Thames	Householder	1
1	122 Hamlyn Thos		1, 2, 3, E John	Freeholder	1
1	123 Hallett Henry		1, 2, 3, E John	Householder	1
1	124 Horseman Dennis		Part 10, 11, W Thames	Freeholder	1
1	127 Hewett Wm J	J	17, 18, S Victoria	Householder	1
1	131 Jackson Robt	J	18 N Haines	Householder	1
1	197 Judd Sylvester		13 W Thames	Freeholder	1
6	126 Kanady Emmett		17, 18, S Victoria	Freeholder	1
1	136 Lenihan John		N Gravel Road 1 to 8, 22 to 30 S Skye	Freeholder	1
1	140 Morrison John		6, 7, S Victoria	Householder	1
1	144 Malone J T		Part 5, W McKeand	Householder	1
1	145 Miller James		5 E John	Freeholder	4
1	147 Munro Edward	J	Part 5, 4, N Bell	Householder	1
1	148 Murdoch Alexr		4 E McKeand, 1 W Cushel	Freeholder	1
1	149 Murdoch James		4 E McKeand, 1 W Cushel	Householder	1
1	151 Millar T D	J	W part 12, 13, 14, N Bell	Freeholder	1
1	152 Moulton Wm	J	Part 10, N part Watterworth sry	Freeholder	1
1	153 Mathews Charles		Part 10, N part Watterworth sry	Freeholder	1
1	156 Moffat Frank	J	6, 7, E John	Householder	1
1	157 Minkler Benj		15 S Victoria	Freeholder	1
1	158 Minkler James		15 S Victoria	Householder	2
1	161 Merchant F W		Part 10, 11, W Thames	Householder	1
2	215 Marr Benj		1, 21, N Henry	Freeholder	1
1	255 Millar Robt		1, 2, 3, Crusoe Ave	Freeholder	1
1	163 McCarty Asy J	J	Part 1, 2, W Thames	Freeholder	1
1	164 McNiven Robt		21 N Haines	Freeholder	1
1	165 McFee Neil		1 N Innes	Freeholder	1
1	168 McDonald J F		Part 10, 11, W Thames	Freeholder	1
1	169 McInnes J A	J	16 S Victoria	Freeholder	1
1	170 McInnes Donald		16 S Victoria	Householder	1
1	174 McGee John		13, 14, 15, W Ossian	Freeholder	1
1	175 McGrath Wm	J	13, 14, N Victoria	Freeholder	1
1	176 McDermott Thos	J	11 N Victoria	Freeholder	1
1	180 McDonald Jno	J	Part 8, W Thames	Householder	1
1	181 McCarty N C		Part 10, W Thames	Freeholder	7
3	182 McCarty H D	J	Part 10, W Thames	Householder	1
1	183 McCrae Wm		Part 20, S Victoria	Freeholder	1
1	186 McKay Wm	J	4 to 9 E Crusoe Avenue	Householder	1
1	242 McKay Geo		4 N Henry	Freeholder	1
1	191 Oliver Henry		Part 11, 12, E John	Householder	1
1	194 Perkins Geo E	J	Part 10, 11, W Thames	Householder	1

No. on Roll	NAMES OF THE VOTERS.	Jurors	Description of Property in respect of which the Voter is entitled to Vote.	Freehold or Household	Post Office Address.
195	Poolz Henry		Part 10, 11, W Thames	Freeholder	1
196	Parsons Wm N		Part 10, 11, W Thames	Householder	1
198	Patch T S		13 W Thames	Householder	1
130	Quigley Edward		18 N Haines	Freeholder	1
200	Ross Wm	J	Block T, N Bell	Freeholder	1
201	Ross Geo		8 N Victoria	Freeholder	1
203	Rodenhurst V		Part 5, W McKeand	Freeholder	1
204	Rumsey W A		5, 5, W Thames	Freeholder	1
206	Roberts Stephen		5 N Victoria	Freeholder	1
208	Robinson Wm		9 W Thames	Householder	1
210	Roberts Geo	J	17 N Haines	Householder	1
211	Robinson Orville E	J	Part 10, 11, W Thames	Freeholder	1
212	Robbins Thomas	J	3 W Thames	Freeholder	1
216	Russell John	J	1 and 21 N Henry	Householder	1
218	Redman E J	J	19, 20, E John	Householder	1
178	Ross John	J	Part 1, S Victoria	Freeholder	1
224	Sutherland George	J	Part 10, 11, W Thames	Freeholder	1
225	Stiff Wm		5, 6, S Innes 5, 6, N Henry	Freeholder	1
228	Siggins Samuel	J	Part 1, 22, S Henry	Freeholder	1
229	Sheady Patrick		6 W McKeand	Freeholder	1
230	Steele Samuel	J	13, 14, S Victoria	Freeholder	1
232	Sherlock John		2 S Innes	Householder	1
233	Sutherland R L		1, 2, W Thames	Freeholder	1
234	Stimson G G		Part 12, S Victoria	Freeholder	1
235	Smith Isaac		Part 12, S Victoria	Householder	1
237	Sutherland W E	J	Part 10, 9, 8, 7, N Bell	Householder	1
238	Shaver John W	J	Part 1, 22, S Innes	Freeholder	1
240	Snider Wm		6, 4, Fish survey	Householder	1
243	Tyler Charles		4 N Henry	Householder	1
244	Tallon Edward		8 N Victoria	Freeholder	1
245	Turner Ervin		18 N Victoria	Freeholder	1
246	Thomas Wm (col)		Part 4, 5, N Gravel Road	Freeholder	1
249	Tune Geo	J	4, 5, N Victoria	Freeholder	1
250	Thornton Thos J	J	16 W Thames	Freeholder	1
251	Thomson John		12 N Victoria	Freeholder	1
131	Umlin Adolphus		4 W John	Freeholder	5
141	Underwood Wm		6, 7, S Victoria	Householder	1
256	Whelan Stephen		1, 2, 3, E Crusoe Avenue	Householder	1
258	Ward John		2, 3, N Victoria	Freeholder	1
259	Walley G W	J	8, 9, 10, E John	Freeholder	1
260	Walsh John		9 N Victoria	Freeholder	1
261	Watterworth Wm	J	Part 10, W Oxford Avenue	Freeholder	1
262	Walker Hiram		1 S Victoria	Freeholder	1
263	Wills Richard		8 N Innes	Freeholder	1
267	Wood Benjamin	J	3 N Henry	Freeholder	1
269	Winters Hy J		1 S Victoria	Householder	1
271	Wilbee Thomas	J	21 N Bell	Householder	1
83	Williams J A		14, 15, W Thames	Freeholder	1

FIRST WARD.

PART I.

List of Persons entitled to Vote at both Municipal Elections
and Elections to the Legislative Assembly.

Polling Subdivision No. 2.

*Bounded by Thames Street on the West, River Thames on the South, and the
Township of North Oxford on the East and North.*

No. on Roll	NAMES OF THE VOTERS.	Jurors	Description of Property in respect of which the Voter is entitled to Vote.	Freehold or Household.	Post Office Address.
272	Augustine Darcy		13, 14, N Alma	Freeholder	1
274	Adair Joseph	J	19, 20, 21, S Carnegie	Freeholder	1
278	Adair James	J	Part 12, S Metcalf	Freeholder	1
279	Ackert John	J	13, 14, N William; 14, 15, S Alma	Freeholder	1
281	Allen Albert	J	Part 17, 18, S Alma	Freeholder	1
511	Bell W C		15, 16, S William	Freeholder	1
507	Bell Robert		6 N Carnegie	Freeholder	1
285	Boon Wm		11 S Inkerman	Freeholder	1
286	Brown John		1 to S E George	Freeholder	1
287	Birss John	J	3, 4, S William	Freeholder	1
290	Boles John		14 S William	Freeholder	1
291	Bishop Edward	J	14 S William	Householder	1
292	Barton Wm		18 N Inkerman; 19 S Cathcart	Freeholder	1
293	Baccas Wm		4 E Thames	Householder	1
295	Burrows Geo		Part 1, S Carnegie	Householder	1
297	Blackwell J W		14, 15, N Carnegie	Householder	1
298	Bell Wallace		16 S Metcalf	Freeholder	1
302	Brown Thos		2, 2 N Metcalf	Freeholder	1
309	Ball James		4, 5, N Metcalf	Freeholder	1
426	Barnard Joshua		12 N Alma	Freeholder	1

No. on Roll	NAMES OF THE VOTERS.	Jurors	Description of Property. in respect of which the Voter is entitled to Vote.	Freehold or Household.	Post Office Address.
460	Hillsdon Abram		24, 25, E Thames	Freeholder	1
333	Holmes George		11 N Catherine	Freeholder	1
380	Johns J B	J	15 N King Hiram	Freeholder	1
381	Jameson Wm		8 N Carnegie	Freeholder	1
383	Jenkinson J W		20, 21, E Thames	Householder	1
385	Johnson Charles	J	9 N Carnegie	Householder	1
386	Kerr Daniel		4 N Catherine	Freeholder	1
387	Kerr Hugh	J	4 N Catherine	Householder	1
388	Knight John	J	3 N Carnegie	Freeholder	1
390	Kenney Thos		23 N Carnegie	Householder	1
358	Kennedy Peter		10 N William	Freeholder	1
382	Keating Robert		20, 21, E Thames	Freeholder	1
392	Lewis Marshall		10, N Metcalf	Householder	1
394	Long Joseph	J	3, 4, N King Hiram	Householder	1
448	Lenihan John		11 N William	Freeholder	1
396	Maud James L	J	11, 12, N Cathcart	Householder	1
398	Mercer George	J	10 S William	Freeholder	1
400	Maud Wm	J	4, 5 North Metcalf	Householder	1
401	Morley Charles		8 N Metcalf	Freeholder	1
402	Moore R L (col)		18, 19, 20 S Inkerman	Freeholder	1
404	Midgely James		15 S Inkerman	Householder	1
405	Mercer Alexr		8, 9 S William	Freeholder	1
407	Melville John		Part 12, N Catherine	Householder	1
409	Morgan David	J	14 N Alma	Householder	1
410	Magnity Robert		16, 17, 18, S King Hiram	Freeholder	1
412	Matheson Peter		15, S Inkerman	Householder	1
416	Moon Hugh	J	3, 4, N Carnegie	Householder	1
418	Marriott Geo	J	10, E Thames	Householder	1
420	Marshall Joseph	J	Part 3, 4, S Metcalf	Householder	1
517	Moo James		10, N Carnegie	Freeholder	1
423	McMurray James		6, 7, S King Hiram	Freeholder	1
424	McDonald Robt		N Dean 18, 20, 21, 22, N Cathcart	Freeholder	5
427	McMurray Robt	J	12 N Alma, 13 S Inkerman	Householder	1
428	Magill Adam	J	16 N Alma, 17 S Inkerman	Freeholder	1
420	McSherry Geo	J	8, 9, E Thames	Freeholder	1
430	McKay A		Part Block F	Freeholder	1
432	McKellar Arch	J	10, S Inkerman	Householder	1
434	McDonald John	J	3, E Thames	Householder	1
436	McGowan Anthony	J	8, N Carnegie	Householder	1
437	McNalley John	J	23, E Thames	Freeholder	1
439	McDonald James	J	14, S Carnegie	Householder	1
522	McKee Andy		8, 9, S Metcalf	Freeholder	1
441	O'Neill Wm		4, S William	Freeholder	1
444	Paine David		18, 21, N Carnegie	Freeholder	1
445	Proctor John P		Part Blk C	Freeholder	1
449	Poole John	J	11, N William	Householder	1
450	Proctor Harman	J	9, N Alma	Freeholder	1
451	Poole Henry		4, N Carnegie	Freeholder	1
452	Pickard James		17, N Alma	Freeholder	1

FIRST WARD—SUBDIVISION NUMBER TWO—Continued.

No. on Roll	NAMES OF THE VOTERS.	Jurors	Description of Property in respect of which the Voter is entitled to Vote.	Freehold or Household.	Post Office Address.
1	453 Petrie Richard	J	16, S Alma	Freeholder	1
1	455 Porteous Alex S	J	13, E Thames	Householder	1
1	457 Page Josiah	J	2, 3, N Inkerman	Householder	1
1	459 Petrie Joseph	J	Part 10, N Alma	Householder	1
1	395 Proctor Joseph	J	11, 12, S Cathcart	Freeholder	1
1	461 Quigley Edward	J	24, 25, E Thames	Householder	1
1	462 Ross John	J	18, N Alma	Freeholder	1
1	464 Ross Phineas	J	9, 10, N King Hiram	Freeholder	1
1	466 Ross Geo C	J	9, 10, N Carnegie	Freeholder	1
1	468 Robertson R J	J	Part 1, 2, S Metcalf	Householder	1
1	470 Robinson Gilbert	J	9, N Metcalf	Householder	1
1	472 Robinson Albert	J	9, S Alma	Householder	1
1	474 Robinson Thos	J	Part 10, N William	Householder	1
1	476 Rogerson Richard	J	14, E Thames	Householder	1
1	480 Ross James	J	1, N Catherine	Freeholder	1
1	318 Ross Colin	J	15, 16, N William	Freeholder	1
1	477 Sutherland Geo	J	Part Blk E	Freeholder	1
1	479 Smith Wm	J	7, 8, S Catherine	Householder	1
1	481 Sutherland James	J	1, N Catherine	Householder	1
1	483 Saylor Herman	J	2, S William	Householder	1
1	484 Sharp Noble	J	24, 25, 26, S King Hiram; 26, 27, 28, N Carnegie	Freeholder	1
1	487 Sutherland G M	J	5, 6, N King Hiram	Freeholder	1
1	489 Stipt Franklin	J	Part 13, N Catherine	Householder	1
1	490 Smale Jacob	J	24, 25, N Carnegie	Freeholder	1
1	494 Smith John	J	14, S Inkerman	Freeholder	1
1	495 Sinclair James	J	10, 11, S Catherine	Freeholder	1
1	496 Sinclair John	J	10, 11, S Catherine	Householder	1
1	497 Smith T M	J	5, S Catherine	Freeholder	1
1	492 Smith W O	J	5, S Catherine	Householder	1
1	500 Sutherland Wm	J	11, N King Hiram	Freeholder	1
1	501 Sutherland Angus	J	Part 11, N King Hiram	Householder	1
5	504 Shannon Daniel	J	Part 15, S King Hiram	Householder	1
1	505 Saylor Freeman	J	26, E Thames	Freeholder	1
1	506 Stark James	J	12, S Catherine	Freeholder	1
1	508 Silk Henry	J	6, N Carnegie	Householder	1
1	510 Suggett Leonard	J	11, N Carnegie	Householder	1
1	512 Short Jno W	J	8, 9, S King Hiram; 15, 16, S William	Householder	1
1	514 Sturrock John	J	Part 2, E Thames	Householder	1
1	516 Sumner Wm	J	24, 25, 26, N King Hiram	Householder	1
1	518 Snider Abram	J	10, N Carnegie	Householder	1
1	328 Stinson G A	J	31, 32, S King Hiram; 33, 34, N Carnegie	Freeholder	6
1	343 Shearon Henry	J	14, N Catherine	Freeholder	1
1	498 Smith John	J	14, N Alma	Freeholder	1
1	411 Sutherland Robt A	J	15, S Inkerman	Freeholder	1
1	520 Turner Albert	J	31, 32, 33, 34, S Carnegie	Householder	1
1	521 Thornton Patrick	J	12, N William	Freeholder	1
1	523 Tapley Geo	J	8, 9, S Metcalf	Householder	1
1	275 Thompson Wm	J	17, 18, 24, S Carnegie	Freeholder	1

FIRST WARD—SUBDIVISION NUMBER TWO—Continued.

No. on Roll	NAMES OF THE VOTERS.	Jurors	Description of Property in respect of which the Voter is entitled to Vote.	Freehold or Household.	Post Office Address.
526	White David	J	5, N Catherine	Freeholder	1
528	Webster John	J	9, N William	Householder	1
533	Willoughby Rev Wm		14, S King Hiram	Freeholder	1
535	Wilson J J	J	22, E Thames	Householder	1
537	Waring James		11, S Alma	Householder	1
538	Wilford Wm		6, 7, N Helen	Freeholder	1
419	Wallace James		Part 3, 4, S Metcalf	Freeholder	1
509	Weaver Sylvester		11 N Carnegie; 8 9 S King Hiram	Freeholder	1
513	Wickens Joseph		7N Metcalf; 5 S Helen	Freeholder	1
283	Wilson Robert		11, 12, N Carnegie	Freeholder	1

PART 2.

Persons entitled to Vote at Municipal Elections only.

No. on Roll	NAME OF THE VOTERS.	Jurors	Description of Property in respect of which the Voter is entitled to Vote.	Freehold or Household.	Post Office Address.
117	Hook, William		N Bell, part 5, 6	Freeholder	1

PART 3.

Persons entitled to Vote at Elections to the Legislative Assembly only.

No. on Roll	NAME OF THE VOTERS.	Jurors	Description of Property in respect of which the Voter is entitled to Vote.	Freehold or Household.	Post Office Address.
-------------	---------------------	--------	----------------------------------------------------------------------------	------------------------	----------------------

List of

Bounde
the S

No.
on
Roll

540 Ale
544 Ack

551 Ba
552 Bro
554 Bow
555 Bail
557 Blo
558 Bro
559 Bro
560 Bra
565 Bol
567 Bol
568 Ben

570 Bak
571 Ber
572 Bar
573 Buc
576 Bro
577 Bro
759 Bro
545 Bro

SECOND WARD.

PART I.

List of Persons entitled to Vote at both Municipal Elections
and Elections to the Legislative Assembly.

Polling Subdivision No. 3.

*Bounded on the North by the River Thames, on the West by Thames Street, on
the South by King Street, and on the East by the Township of West, Oxford.*

No. on Roll	NAME OF THE VOTERS.	Ju- vors	Description of Property in respect of which the Voter is entitled to Vote.	Freehold or Household.	Post Office Address.
540	Alexander Wm		Part 4, E Thames	Householder	1
544	Ackert John		22, 24, 23, E Thames	Freeholder	1
551	Barker Edward		5, S Queen	Freeholder	1
552	Brown John	J	Part 11, 12, E Thames	Freeholder	1
554	Bowers Thos		Part 3 N King	Householder	1
555	Bailey Geo	J	3, 4, N Com Road	Freeholder	1
557	Bloor Chas	J	N King, E Water, part Gore	Householder	1
558	Brown Thos		2, 3, 4, 5, E Mill	Freeholder	1
559	Brown Geo K	J	W Mill Tannery	Freeholder	1
560	Bradbury Fred	J	7, 8, S Queen	Freeholder	1
565	Boles John		Part 9, E Thames	Freeholder	1
567	Boles Wm		Part 9, E Thames	Householder	1
568	Beuson J R		Part 20, N Charles, 7, 8, 9, E Mill, 3, W Mill	Freeholder	3
570	Baker Thos		Part 1, W Carroll	Householder	1
571	Berry Jas H	J	5, 6, N Com Road	Freeholder	1
572	Barnum John		Part 1, 2, N King	Freeholder	1
573	Buchanan M T		Part 10, S Charles	Freeholder	1
576	Brown James, Sr		11, 12, N Queen	Freeholder	1
577	Brown James, Jr	J	11, 12, N Queen	Householder	1
759	Brown P J		4, S Charles	Freeholder	1
545	Browett Joseph		Part 5, N King	Freeholder	1

No. on Roll	NAMES OF THE VOTERS.	Jurors	Description of Property. in respect of which the Voter is entitled to Vote.	Freehold or Household.	Post Office Address.	No. on Roll
581	Cary Chas C (col)		Part 11, E Thames	Householder	1	667
583	Coyne Isaac		Part 4, E Thames	Householder	1	668
584	Carroll D W		N King Office	Freeholder	1	669
587	Cowan Alfred H		Part 18, B F Con	Freeholder	1	670
589	Clark Wm	J	20, 21, 22, S Queen	Householder	1	671
591	Carroll Timothy		8, N Queen	Householder	1	672
592	Campbell Homer, Jr.		Part Gore, N King, E Water	Freeholder	1	674
593	Canfield David		1, S Gravel Road; 1, 4, part Park Lot 3	Freeholder	4	680
595	Cook J L		10, W Carroll	Freeholder	1	681
596	Cook Nolan	J	10, W Carroll	Householder	1	684
598	Clark Geo F	J	Part 6, E Thames	Householder	1	686
599	Clouse Lawrence		11, 12, S Cherry; E Haaris	Freeholder	1	687
601	Curtis Arthur	J	Part 2, E Thames	Householder	1	689
603	Chambers Wm	J	Part 15, E Thames	Householder	1	691
605	Campbell Homer, Sr.		Part 1, N King, E Water	Householder	1	693
607	Cable Benjamin		1, N Gravel Road	Householder	1	695
609	Cody Alfred	J	Part 4, E Carroll	Householder	1	697
610	Carroll F G	J	1, 2, 3, S Queen	Freeholder	1	718
612	Crandall Aaron	J	Part 10, E Thames	Householder	1	699
614	Cook Jas R	J	Part 5, N King, E Mill	Householder	1	701
620	Casswell E		4, N King, Campbell's Block	Freeholder	1	703
639	Cove N		9, 10, S Cherry	Freeholder	1	703
569	Christopher John		1, W Carroll	Freeholder	1	803
869	Christopher Geo		1, W Carroll	Freeholder	1	707
869	Christopher A N		1, W Carroll	Freeholder	1	708
815	Cook John		4, S Cherry	Freeholder	6	710
892	Clark H B		Part 2, N. King	Freeholder	1	713
624	Day Ezra	J	6, 7, W Carroll	Householder	1	714
627	Deuel R M		Part 15, N St Andrew	Householder	1	715
629	Dutton Thos	J	Part 2, N King, W Carroll	Householder	1	717
631	Dryden John		Part 6, S Gravel Road	Householder	1	719
633	Davidson Wm		Part 2, E Thames	Freeholder	1	720
634	Dundas Wm		Part 3, E Thames	Householder	1	723
636	Davy John		Part 19, N Charles	Householder	1	725
638	Darker James		Part 20, N King	Householder	1	726
640	Dunion Patrick		9, 10, S Cherry	Freeholder	1	727
640	Davidson Wm		Part 19, S Queen	Freeholder	1	730
644	Elliott J N	J	2, 3, S Charles	Householder	1	736
645	Elliott Thos		Part 3, N King, E Mill	Householder	1	738
646	Elliott Joseph	J	9, S Charles	Householder	1	744
650	Elliott Walter	J	Part 1, S Cherry	Freeholder	1	746
653	Emigh Elgin		5, N Queen	Householder	1	748
655	Ely David		Part 20, S St Andrew	Freeholder	1	750
656	Edwards James		13, 14, N Queen	Freeholder	1	606
658	Faukes T F		3, E Thames	Householder	1	751
660	Frezell Augustus	J	Part 6, E Mill	Freeholder	1	754
661	Fraser James	J	7, S Cherry	Householder	1	755
663	Forbes Wm		Part 11, S Queen	Freeholder	1	756
664	Ferris Geo		Part 15, 16, E Thames	Householder	1	758
666	Fotheringham G B	J	Part 6, E Thames	Freeholder	1	760
807	Fowler Wm		Part 2, W Carroll	Freeholder	1	
626	Ferris Geo		Part 15, N St Andrew	Freeholder	1	

Post Office Address.	No. on Roll	NAMES OF THE VOTERS.	Jurors	Description of Property in respect of which the Voter is entitled to Vote.	Freehold or Household	Post Office Address.
1	667	Grey M H		15, 16, S Queen	Freeholder	1
1	668	Goble John	J	16, S Charles	Freeholder	1
1	669	Greenaway I R	J	Part 15, W Carroll	Freeholder	1
1	670	Gayfer John		Part 3, E Thames	Freeholder	1
1	671	Garner James		24, S Queen	Freeholder	1
1	672	Garner Wm		26, S Queen	Freeholder	1
1	674	Grant Jas L		8, E Thames	Householder	1
1	680	Gusten James		Part 7, E Thames	Freeholder	1
4						
1	681	Holden John		9, S Queen	Freeholder	1
1	684	Hagle Samuel		3, 4, S Gravel Road; 5, 6, part Park Lot 2	Freeholder	1
1	686	Henderson D H	J	Part 9, E Thames	Householder	1
1	687	Henderson D S	J	Part 9, E Thames	Householder	1
1	689	Hirst Thomas		Part 1, W Carroll	Householder	1
1	691	Hosier A R	J	Part 9, N Com Road	Householder	1
1	693	Heath Robert	J	Part 15, E Thames	Householder	1
1	695	Hugill Edward	J	Part 5, N King	Householder	1
1	697	Hearn Henry J	J	Part 2, E Thames	Householder	1
1	718	Huffman N B		Block A, Canfield Survey	Freeholder	9
1						
1	699	Ireland James C		22, S Cherry	Freeholder	1
1	701	James Watkins	J	Part 18, B F Con	Freeholder	1
1	703	Jackson Robert		Part 1, N Charles, E Mill	Householder	1
1	803	James Simon		Part 7, W Carroll	Freeholder	10
1						
1	707	Kerr Daniel		Part 18, E Thames	Freeholder	1
6	708	Kerr John	J	23, 24, N Hamilton	Freeholder	1
1	710	Killman J P		Part 1, N King	Householder	1
1						
1	713	Lynoh John		1, 2, S Gravel Road	Freeholder	1
1	714	Lynch James, Sr		1, 2, S Gravel Road	Householder	1
1	715	Lynch James, Jr		Part 6, S Gravel Road	Freeholder	1
1	717	Lillywhite Richard		Part 3, S Gravel Road	Householder	1
1	719	Lillywhite Henry	J	Block A, Canfield Survey	Householder	1
1	720	Lawrence Geo		17, S Queen	Freeholder	1
1	723	Lindsay Henry		11, S Cherry	Householder	1
1	725	Logee S P		Part 4, E Thames	Householder	1
1	726	Livens James		6, N Queen	Freeholder	1
1	727	Lowrie Joseph		6, N Queen	Householder	1
1	730	Lowes Joseph H		Part 10, N Cherry	Freeholder	1
1						
1	736	Morey Jas F	J	Part 5, N King	Householder	1
1	738	Morgan John	J	Part 4, W Carroll	Householder	1
1	744	Murray Wm	J	7, S Gravel Road	Householder	1
1	746	Marohant Wm	J	4, S Gravel Road	Householder	1
1	748	Marshall Peter	J	Part 13, 14, N Cherry	Householder	1
1	750	Millar T D		5, Campbell's Block	Householder	1
1	606	Morrow Thos J		1, N Gravel Road	Freeholder	1
1						
1	751	McKellar John	J	5, S Charles	Freeholder	1
1	754	McDonald A F	J	2, E Carroll	Freeholder	1
1	755	McDonald John		Part 2, E Thames	Freeholder	1
1	756	McDonald J F		Part 2, E Thames	Householder	1
1	758	McKenzie Rev D		3, E Carroll	Freeholder	1
1	760	McLeod Wm		4, S Charles	Householder	1

No. on Roll	NAME OF THE VOTERS.	Jurors	Description of Property in respect of which the Voter is entitled to Vote.	Freehold or Household.	Post Office Address.	No. on Roll
761	McIntyre James	J	4, 5, W Water	Freeholder	1	859
764	McDona'd Robert		17, 18, 19, N Queen	Freeholder	1	861
768	McKay James	J	Past 19, S Queen	Householder	1	862
770	McKay A		Part 8, E Thames	Householder	1	865
772	McIntyre Abram	J	1, 8, 27, S Gravel Road	Householder	1	867
776	McInnes John		10, N Queen	Householder	1	869
778	McKenzie Donald	J	Part 4, S Queen	Freeholder	1	870
602	McCausland M B		Part 15, E Thames	Freeholder	1	871
646	McKay Donald		9, S Cherry	Freeholder	1	872
654	McKenzie John		Part 20, S St Andrew	Freeholder	1	873
782	Noe Louis	J	6, W Water	Freeholder	1	875
784	Nixon James	J	Part 12, S Queen	Freeholder	1	877
787	O'Connor Arthur		8, E Thames	Householder	1	881
788	O'Callaghan Jno		Part 10, E Thames	Freeholder	1	891
799	O'Dell Wm, Sr	J	2, S Charles ; part 1, W Carroll	Householder	1	795
649	O'Callaghan Jas		Part 1, S Cherry	Freeholder	1	769
794	Phelan Daniel		N King ; E Water ; part Gore	Freeholder	1	883
796	Podmore John	J	5, E Carroll	Householder	1	885
797	Partlo Wm		Part 6, E Mill	Freeholder	1	887
798	Palmer W B	J	10, S Cherry	Freeholder	1	888
799	Pingston Thos		Part 3, 5, 6, S Cherry	Freeholder	1	890
800	Pingston Edward		7, 8, S Cherry	Freeholder	1	696
807	Powell Geo		Part 1, S Cherry	Householder	1	745
804	Phelan James		Part 7, W Carroll	Householder	1	662
806	Pierson Hiram		Part 5, N King	Householder	1	817
540	Poole Samuel		Part 4, E Thames	Freeholder	5	893
808	Roblin John	J	Part 2, W Carroll	Householder	1	895
809	Richareson Thos	J	3, N King	Freeholder	1	897
811	Reeder Arthur		Part 1, N King	Householder	1	898
812	Russell John		N Charles, Foundry	Freeholder	1	899
813	Russell J W		N Charles, Foundry		1	900
816	Rose Geo A		4, S Cherry	Householder	1	902
818	Roberts Robt		Part 11, N Cherry	Householder	1	903
820	Rowland Harry		Part 2, E Thames	Householder	1	905
821	Richardson Fred		Part 20, E Thames	Freeholder	1	907
906	Robertson R J		Part 7, E Thames	Householder	1	909
833	Shafer Jacob		14, S Cherry	Freeholder	1	910
834	Shafer John	J	14, S Cherry	Householder	1	913
836	Saylor Freeman		Part 5, E Thames	Householder	1	915
837	Sinclair James		21, E Thames	Freeholder	1	917
839	Shrapnell G J	J	Part 6, 7, E Thames	Householder	1	716
840	Styles Johh		1, S Charles	Freeholder	1	588
846	Sutton John		Part 25, S Queen	Freeholder	1	
847	Sutton Benjamin		Part 25, S Queen	Householder	1	
849	Secord Daniel		Part 2, E Thames	Householder	1	
850	Smith Frank		Part 1, E Thames	Freeholder	6	
851	Snelgrove Abram		1, E Mill	Freeholder	1	
853	Shepherd Fred		Part 5, N King	Householder	1	
855	Scott Geo	J	18, S Queen	Householder	1	
857	Stuart Robt	J	Part 6, N King	Householder	1	
858	Stewart Frank		Part 6, N King	Freeholder	1	

SECOND WARD—SUBDIVISION NUMBER THREE—Continued.

No. on Roll	NAMES OF THE VOTERS.	Jurors	Description of Property in respect of which the Voter is entitled to Vote.	Freehold for Household.	Post Office Address.
859	Smith W O		Part 13, E Thames	Freeholder	1
861	Sutherland Angus		19, E Thames	Householder	1
862	Sumner W K	J	Part 18, B F Con	Freeholder	1
865	Slawson C H		Old Distillery	Tenant	1
867	Smith John S	J	Part 6, E Thames	Householder	1
869	Small Edward		2, 3, N Gravel Road	Householder	1
870	Stafford C V		Part 7, E Thames	Freeholder	1
871	Smith Alfred	J	Part 1, S Cherry	Householder	1
872	Stone John W		Part 4, N Cherry	Freeholder	1
873	Scott Wm		Part 4, N Cherry	Householder	1
875	Stickwood Hy	J	1, 2, N Com Road	Householder	1
877	Skelton Wm		Part 6, N King	Householder	1
881	Sharman Benson		Part 25, S Queen	Householder	1
891	Smith Geo		Part 1, E Thames	Householder	1
795	Shaw John		5, E Carroll	Freeholder	11
769	Scott H H		Part 8, E Thames	Freeholder	1
883	Thornton T J		Part 9, E Thames	Householder	1
885	Todd John		Part 8, 9, W Carroll	Householder	1
887	Tinney Michael		2, S Cherry	Freeholder	1
888	Tinney John		3, S Cherry	Freeholder	1
890	Thompson G A		Part 1, E Thames	Householder	1
696	Tripp Moses		Part 2, E Thames	Freeholder	1
745	Thompson Joseph		4, S Gravel Road	Freeholder	1
662	Uren E W		Part 11, S Queen	Freeholder	1
817	Uren John		Part 11, N Cherry	Freeholder	1
893	Vanbuskirk Jonathan		Part 2, N King	Householder	1
895	Vance Geo		Part 3, W Carroll	Householder	1
897	Walkingshaw Wm		N King, part Gore	Householder	1
898	Wixon Franklyn	J	5, S Gravel Road	Freeholder	1
899	Williamson Roderick		Part 1, E Carroll	Freeholder	1
900	Waterhouse James	J	5, 6, S Cherry	Freeholder	1
902	Wilson J M		Part 1, E Thames	Householder	1
903	White David		Part 3, E Thames	Freeholder	1
905	Wilson J J		Part 7, E Thames	Householder	1
907	Walker John		6, S Queen	Freeholder	1
909	Watson David	J	11, W Carroll	Householder	1
910	Waterhouse Ernest	J	8, S Cherry	Freeholder	1
913	Waunch James		20, N Queen	Householder	1
915	Wilkins Ed		Part 1, N Charles	Householder	1
917	Wiltse Harrison		Part 4, W Carroll	Householder	1
716	Walker Geo		Part 3, S Gravel Road	Freeholder	1
588	Williams J A		20, 21, 22, S Queen	Freeholder	1

PART 2.

Persons entitled to Vote at Municipal Elections only.

No. on Roll	NAME OF THE VOTERS.	Jurors	Description of Property in respect of which the Voter is entitled to Vote.	Freehold or Household.	Post Office Address.
1027	Gibson, Jos, jr		Part 2, E Thames	Freeholder	1

PART 3.

Persons entitled to Vote at Elections to the Legislative Assembly only.

No. on Roll	NAME OF THE VOTERS.	Jurors	Description of Property in respect of which the Voter is entitled to Vote.	Freehold or Household.	Post Office Address.
-------------	---------------------	--------	----------------------------------------------------------------------------	------------------------	----------------------

List of

Bounde

No. on Roll	M
923	Ail
925	An
930	Bi
932	Be
934	Bi
941	Bi
942	Bar
944	Bro
948	Be
950	Be
952	Bar
954	Bur
959	Bl
958	Bar
1005	But
1065	Bar
1112	Bro
960	Car
962	Clo
964	Cal
966	Car
968	Cov
970	Cou
1098	Chr

SECOND WARD.

PART I.

List of Persons entitled to Vote at both Municipal Elections
and Elections to the Legislative Assembly.

Polling Subdivision No. 4.

*Bounded on the West by Thames Street, on the North by King Street, on the
East and South by the Township of West Oxford.*

No. on Roll	NAMES OF THE VOTERS.	Jurors	Description of Property in respect of which the Voter is entitled to Vote.	Freehold or Household	Post Office Address.
923	Aikman J A		10, E Thames	Freeholder	1
925	Andrews John		Part 9, S King	Householder	1
930	Bird Chas, (col) ...		20, N Hall; 18, S Tunis	Householder	1
932	Bevins W, (col) ...		Part 2, W Thames	Householder	1
934	Bird James, (col) ...		21, S Tunis	Householder	1
941	Bailey Geo H		Part 13, S Com Road; 13 in rear	Freeholder	1
942	Barracrough T H	J	Part 9, 8, S Com Road	Freeholder	1
944	Brown P J		Part 3, E Thames	Freeholder	1
948	Beadle Nelson	J	32, 33, S Tunis; 34, 35, N Hall	Householder	1
950	Berry Wm		Part 10, S King	Householder	1
952	Barnum John	J	Part 6, 7, S Hall	Householder	1
954	Burke Wm R		Part 2, E Thames	Householder	1
959	Blackwood D M	J	Part 10, S Com Road	Householder	1
958	Bartlot John		Part 9, S King	Householder	1
1005	Butler Richard		1, 2, 3, E Wellington	Freeholder	1
1065	Barber Joseph		Part 4, E Wellington	Freeholder	1
1112	Browett J Wm		Part 4, S King	Freeholder	1
960	Campbell James		Part 7, 8, E Thames	Householder	1
962	Clouse David		Part 6, S King	Householder	1
964	Caldwell Erwin	J	Part 7, S King	Householder	1
966	Campbell Orin	J	3, S Com Road	Householder	1
968	Cowan Thos	J	3, E James	Freeholder	1
970	Couse Geo		29, N Hall	Freeholder	1
1098	Christopher Geo		Part 1, S King	Freeholder	1

No on Roll	NAMES OF THE VOTERS.	Jurors	Description of Property. in respect of which the Voter is entitled to Vote.	Freehold or Household.	Post Office Address.
973	Crawford C B		10, S Hall	Freeholder	1
974	Crawford Joseph		10, S Hall	Householder	1
976	Campbell Homer	J	6, E Wellington	Freeholder	1
980	Curtis Arthur	J	6, S Com Road	Freeholder	1
982	Campbell J G	J	Part 2, E Thames	Householder	1
984	Cotter R H	J	9, E Thames	Householder	1
986	Casswell R H	J	16, 17, E Harris	Householder	1
988	Collins Ervin		Part 20, E Thames	Householder	1
990	Calhoun Alfred		Part 1, S King	Householder	1
1142	Coates Stephen		Part 4, S King	Freeholder	1
1181	Chadwick C E		5, N Hall	Freeholder	1
1222	Chambers Geo		9, S Tunis	Freeholder	1
994	Downing J H	J	3, S Canterbury	Householder	1
996	Dougherty Joseph	J	Part 1 E Thames	Householder	1
999	Dougherty John	J	Part 19, S King	Householder	1
1000	Day Dexter	J	5, 6, W Wellington	Freeholder	1
1002	Dryden David		3, W Wellington	Householder	1
1003	Duke F W	J	5, E Wellington	Freeholder	1
1004	Deacon J S		1, 2, 3, E Wellington	Freeholder	1
1007	Dutton Walter		Part 1, S King	Householder	1
1009	Dutton Arthur	J	Part 1, E James	Householder	1
1011	Dundas Oscar	J	36, 37, N Hall; 34, 35, S Tunis	Freeholder	1
1013	Edwards Geo E		12, S Tunis	Householder	1
1014	Filis F Y		18, 19, 20, 31 to 34 McCaughey's Survey	Freeholder	6
1015	Edwards Geo	J	5, N Canterbury	Freeholder	1
1018	Elder Robt	J	23, N Hall	Freeholder	1
1016	Esty Isaac	J	Block B, McCaughey's Survey	Freeholder	1
1033	Edwards John		15, N Tunis	Freeholder	1
1020	Flewelling T G	J	Part 8, S King	Freeholder	1
1022	Fergusson C W		Part 8, S King	Householder	1
1024	Fierheller Adam		Part 9, N Hall	Householder	1
1026	Fisher Louis		Part 8, S Tunis	Householder	1
1061	Foster Geo		Part 10, S King	Freeholder	1
1029	Greenaway Jas	J	1, W Wellington	Householder	1
1030	Gordon Alexr		Part 5, S King	Freeholder	1
1031	Gray M H		Part 7, S King	Freeholder	1
1032	Grant Alexr		17, 1, S Hall	Freeholder	1
1034	Gark Marshall		15, N Queen	Householder	1
997	Gammon Albert E	J	Part 1, E Thames	Householder	1
1163	Grant Alexr		Grist Mill and Priv	Freeholder	1
1208	Gollan Thomas		Part 9, S King	Householder	1
1036	Hogan Geo	J	5, S Hall	Householder	1
1039	Hall J N	J	Part 1, E Thames	Householder	1
1041	Holmes Joseph	J	13, S Tunis; 15 N Hall	Householder	1
1043	Holmes H D, (col)	J	11, S Hall	Freeholder	1
1044	Hoyt J J		Part 10, S King	Freeholder	1
1046	Husband Thos	J	Part 19, S Com Road	Householder	1
1048	Horseman D		Part 19, S Com Road	Freeholder	1
1049	Horseman J D	J	Part 19, S Com Road	Householder	1
1050	Holmes Joseph		32, N Hall	Freeholder	1

No on Roll	NAMES OF THE VOTERS.
1051	Hobbs
1076	Harris
933	Hall
1168	Hors
1180	Hays
1054	John
1056	Jack
1058	Jack
1059	Jenki
1062	Jacks
1064	Konn
1066	Kenn
1071	Kerr
1073	Killm
1075	Kenn
1077	Kluph
1093	Kemp
985	Kenn
1079	Lavin
1081	Levin
1083	Lewis
1085	Lefler
1089	Longh
1050	Mapes
1094	May S
1095	Mitche
1096	Moore
1097	Marter
1099	Murray
1102	McHab
1103	Maud
1108	McGad
1104	Moore
1035	Myers
1106	McDow
1108	McKay
1106	McLeod
1111	McKin
1114	McKen
1116	McQuib
1118	McGad
1119	McCrun
1120	McDou
951	McCart
955	McGolin
965	McKinn
1087	McKitti
1121	Norswo
1122	Noxon J
1124	Newton
983	Noxon V

SECOND WARD—SUBDIVISION NUMBER FOUR—Continued.

21

Post Office Address.	No on Roll	NAMES OF THE VOTERS.	Jurors	Description of Property in respect of which the Voter is entitled to Vote.	Freehold or Household.	Post Office Address.
1	1051	Hebson Geo		32, N Hall		
1	1076	Harris Christopher		Part 9, N Hall	Householder	1
1	933	Hall Walter		21, S Tunis	Freeholder	1
1	1168	Horseman Joseph		4, S Com Road	Freeholder	1
1	1180	Hayward Wm, Jr.		10, 11, 12, S Com Road	Freeholder	1
1	1054	Johnson Geo	J	4, E James		
1	1056	Jackson Alex	J	E part 4, N Hall	Householder	1
1	1058	Jackson James	J	Part 2, E James	Householder	1
1	1059	Jenkins Simon		30, N Hall	Householder	1
1	1062	Jackson Emerson	J	Part 10, S King	Freeholder	1
1	1064	Konney Stephen		Part 2, W James	Householder	1
1	1066	Kennedy John A	J	Part 4, E Wellington	Householder	1
1	1071	Kerr Wm		6, McCaughey's Survey	Householder	1
1	1073	Killman Joseph	J	Part 1, S King	Householder	1
1	1075	Kennedy Rev Geo		Part 2, E Thames	Householder	1
1	1077	Kluphe Augustus		Part 9, N Hall	Householder	1
1	1093	Kempshell Geo		14, N Canterbury	Freeholder	1
1	985	Kennedy M		16, 17, E Harris	Freeholder	7
1	1079	Lavin Thos		Part 1, W James	Freeholder	1
1	1081	Levins Ed	J	9, S Hall	Freeholder	1
1	1083	Lewis Heeman J		Part 10, E James	Householder	1
1	1085	Lefler W D	J	Part 1, E James	Householder	1
1	1089	Longfield Joseph	J	1, 2, N Hall	Householder	1
6	1051	Mapes Alfred		31, N Hall	Householder	1
1	1094	May Stephen		14, N Canterbury	Householder	1
1	1095	Mitchell O J	J	11, N Hall	Freeholder	1
1	1096	Moore Wm	J	1, N Canterbury	Freeholder	1
1	1097	Marten Solan	J	12, 13, E Harris	Freeholder	1
1	1099	Murray Angus		Part 1, S King	Freeholder	1
1	1102	Malaby James	J	2, N Hall	Householder	1
1	1103	Maud Joe L	J	Part 5, S Canterbury	Householder	1
1	1104	Moore Frank		13, S Hall	Freeholder	1
1	1035	Myers John		5, S Hall	Freeholder	1
1	1106	McDowell James	J	15, 16, S Hall	Freeholder	1
1	1108	McKay Robt	J	1, 2, S Hall	Freeholder	1
1	1106	McLeod Angus	J	Part 2, 3, W James	Freeholder	1
1	1111	McKinnon J M		2, W Wellington	Freeholder	5
1	1114	McKenzie Ed	J	1, McCaughey's Survey	Freeholder	1
1	1116	McQuibban Jas		7, S Canterbury	Householder	1
1	1118	McGeady Jno		4, N Tunis	Householder	1
1	1119	McCrum Geo		12, N Hall	Freeholder	1
1	1120	McDonald Jno		23 to 34 McCaughey's Survey	Freeholder	1
1	951	McCarty N C		Part 6, 7, S Hall	Freeholder	1
1	955	McGulrick Jas		Part 10, S Com Road	Freeholder	12
1	965	McKinney Alexr		5, S Com Road	Freeholder	1
1	1087	McKittrick A G		Part 7, 8, S King	Freeholder	1
1	1121	Norsworthy J C	J	Part 18, Con W Oxford	Freeholder	1
1	1122	Noxon James	J	Block A, McCaughey's Survey	Freeholder	1
1	1124	Newton T J		Part 1, W Wellington	Freeholder	1
1	983	Noxon W C	J	9, E Thames	Freeholder	1

No. on Roll	NAMES OF THE VOTERS.	Jurors	Description of Property in respect of which the Voter is entitled to Vote.	Freehold or Household.	Post Office Address.
1125	O'Connor Hy, Jr ...		Part 2, E Thames	Freeholder	1
1128	Petrie O M ...		Part 10, S King	Householder	1
1131	Phelan Daniel ...		Part 8, E Mill Stream	Freeholder	1
1132	Pipe Wm ...		5, N Tunis	Freeholder	1
993	Richardson Ed.		3, S Canterbury		1
1134	Ryman Robt ...		33, N Hall; 31 S Tunis	Freeholder	1
1135	Robinson Robt ...		38, 39, N Hall	Freeholder	1
1137	Rowland Harry ...		4, E Wellington	Householder	1
1139	Richardson Harry ..	J	Part 1, E Thames	Freeholder	1
1143	Roach John ...		Part 4, S King	Householder	1
1144	Richardson Fred ...	J	2, S Canterbury	Freeholder	1
1090	Roach James ...		31, N Hall	Freeholder	1
1147	Smart James ...	J	29, S Tunis	Householder	1
1148	Stevens Morgan L ..	J	1 to 6, E Harris	Freeholder	1
1150	Setterley Geo ...		8, 8, N Hall	Householder	1
1151	Sibbens Jno ...		Part 12, S Com Road	Freeholder	1
1153	Smith Jesse M ...		16, N Tunis	Householder	1
1155	Shepherd Frank ...		36, S Tunis	Householder	1
1156	Skeggs James ...		28, N Hall	Freeholder	1
1157	Shebaker Martin ...		6, S Canterbury	Freeholder	1
1158	Stuart Robt ...	J	6, S Canterbury	Householder	1
1161	Smith James ...		4, 5, E Thames	Freeholder	1
1162	Stuart Peter ...		Oatmeal Mill and Privilege	Freeholder	1
1165	Sudworth Wright ...	J	1, 2, 3, N Thames	Freeholder	1
1166	Scoffin Wm ...	J	Part 7, S King	Freeholder	1
1167	Sumner John ...	J	14, 15, E Thames	Freeholder	1
1169	Stevens James ...		Part 1, S King	Householder	1
1169	Sumner Wm ...		4, S Com Road	Householder	1
1171	Smythe Henry ...	J	6, N Hall; 6, S Tunis	Householder	1
1174	Shannon Joseph ...	J	Part 10, S King	Householder	1
1175	Sudworth W A ...		7, 8, 11, 12, N Tunis	Freeholder	1
1177	Towle John ...		6, N Tunis	Freeholder	1
1179	Towle Wm ...		1, 2, S Tunis	Householder	1
1180	Turville Daniel ...	J	10, 11, 12, S Com Road	Householder	1
1182	Trout Chas ...	J	5, N Hall	Householder	1
1187	Venton Stephen ...		24, 26, 27, N Hall	Freeholder	1
1188	Vanpatter Hy ...		8, S Hall	Freeholder	1
1191	Waters Robt ...	J	5, S King	Householder	1
1193	Walker J R ...		Part 2, E Thames	Householder	1
1195	Winslade Alfred ...		Part 14, S Hall	Householder	1
1196	Wight James ...		2, 3, 4, 5, McCaughey's Survey	Freeholder	1
1197	Woodroffe R W ...	J	16, 17, 26, 27, McCaughey's Survey	Freeholder	1
1199	Whetstone James ...	J	3, N Hall	Householder	1
1201	Wilson Samuel ...		Part 8, N Hall	Householder	1
1203	Ward George ...	J	18, 19, N Tunis	Householder	1
1205	Webster Alex ...		9, S Tunis	Householder	1
1207	Wilton Goldie ...	J	Part 9, S King	Householder	1
1208	Webb H ...		Income		1
1055	Watterworth Wm ...		Part 4, N Hall	Freeholder	1
945	Wells Thos ...		Part 3, E Thames	Freeholder	1

No. on Roll
1209 York
1115 York

No. on Roll
1027 Oit

Person

No. on Roll

No. on Roll	NAME OF THE VOTERS.	Jurors	Description of Property in respect of which the Voter is entitled to Vote.	Freehold or Household.	Post Office Address.
1209	York Stephen		21, 22, McCaughey's Survey	Freeholder	5
1115	Younie John		9, 7, S Canterbury	Freeholder	1

PART 2.

Persons entitled to Vote at Municipal Elections only.

No. on Roll	NAMES OF THE VOTERS.	Jurors	Description of Property in respect of which the Voter is entitled to Vote.	Freehold or Household	Post Office Address.
1027	Oibson, Jcs, jr		Part 2, E Thames	Freeholder	1

PART 3.

Persons entitled to Vote at Elections to the Legislative Assembly only.

No. on Roll	NAME OF THE VOTERS.	Jurors	Description of Property in respect of which the Voter is entitled to Vote.	Freehold or Household.	Post Office Address.

THIRD WARD.

PART I.

List of Persons entitled to Vote at both Municipal Elections
and Elections to the Legislative Assembly.

Polling Subdivision No. 5.

*Bounded on the East by Thames Street, on the North by King Street, on the
South and West by the Township of West Oxford.*

No. on Roll	NAMES OF THE VOTERS.	Jurors	Description of Property in respect of which the Voter is entitled to Vote.	Freehold or Household.	Post Office Address.
1211	Avery John	J	Part 5, S King	Householder	1
1213	Atkinson J C	J	1, Cottage Ave	Householder	1
1215	Armour David		Part 12, S Ann	Freeholder	1
1274	Atkins James		Part 22, B F Con	Freeholder	1
1218	Bland Rev E M		Part 9, 10, E Oxford	Householder	1
1219	Bower John	J	12, B W N	Freeholder	1
1220	Broderick J H		2, W Thames	Freeholder	1
1221	Brown P J		Part 3, W Oxford	Freeholder	4
1223	Brook A W	J	16, S King	Householder	1
1224	Barker Joseph		3, W Thames	Freeholder	1
1225	Baker James, jr	J	8, B W D	Freeholder	1
1226	Bodwell A		Part 1, W Oxford	Householder	1
1227	Bailey James		Part 22, 1 Cor W Oxford	Householder	1
1229	Bailey A C	J	Part 21, 1 Con W Oxford	Tenant	1
1231	Bailey James	J	Part 21, E Whiting	Freeholder	1
1232	Berry Walter	J	4, 5, B W D	Householder	1
1234	Bevins Norman	J	Part 10, E Oxford	Householder	8
1235	Benson James R		16, 17, 18, B W A	Freeholder	1
1236	Brady James	J	Part 2, E Oxford	Freeholder	1
1237	Buchanan M T	J	5, 6, 7, 8, B W A	Freeholder	1
1238	Browett Joseph		Part 3, W Thames	Freeholder	1
1239	Bennett Thos		8, 9, B W O	Freeholder	1
1241	Bell John	J	15, B W E	Householder	1

No. on Roll

1242 Bru
1243 Bar
1244 Bad
1248 Bai
1303 Boy

1250 Cam
1251 Cra
1252 Chil
1253 Cra
1254 Cha
1255 Chri
1257 Car
1259 Cam
1261 Cha
1263 Cal
1264 Cri
1233 Chri

1266 Dot
1268 Dot
1269 Day
1270 Dix
1271 Dun
1273 Dou
1275 Dre
1277 Dun
1278 Dit
1370 Dem

1280 Elli
1281 Ewa
1282 Elli

1284 Fer
1285 Frez
1286 Faw
1289 Feig
1291 Feig
1293 Floo

1294 Gre
1297 Gar
1299 Gall
1300 Gay
1301 Gen
1303 Gra
1305 Gre
1307 Gibb
1309 Gug
1260 Gri
1450 Goro

1311 Hod
1313 Heu
1314 Hea

No. on Roll	NAMES OF THE VOTERS.	Jurors	Description of Property in respect of which the Voter is entitled to Vote.	Freehold or Household	Post Office Address.
1316	Huntley James	J	Part 11, E Duke	Householder	1
1318	Hugill John	J	9, E Oxford	Freeholder	1
1319	Hovenden Thos	J	8, S King	Freeholder	1
1320	Hager Fred	J	7, B W N	Freeholder	1
1322	Hegler J H	J	Part 2, S King	Householder	1
1324	Hegler Edward	J	Part 1, B W E	Householder	10
1325	Holt J B	J	Part 7, B W D	Freeholder	1
1326	Hayhoe J B	J	Part 7, B W D	Householder	1
1328	Hegler J C	J	3, Chapman's Terrace	Householder	1
1329	Hooper John	J	2, Chapman's Terrace	Householder	21
1332	Hunter R H	J	1, W Thames	Householder	1
1333	Hearn Harry	J	1, 15, B W A	Freeholder	1
1336	Johnson W H	J	Part 1, B W E	Householder	1
1337	Jackson Geo	J	4, 12, 13, B W C	Freeholder	1
1361	Kyle Thos	J	Part 5, 6, E Duke	Freeholder	9
1339	Kenney F W	J	Part 2, S King	Householder	1
1340	Kennedy James	J	10, E Duke	Freeholder	1
1342	Kneeshaw Robt	J	12, 17, 18, B W B	Householder	1
1343	Kennedy Charles	J	7, S King	Freeholder	1
1344	Kennedy Peter	J	Part 14, S King	Freeholder	1
1346	King W S	J	W Merritt	Householder	13
1345	King James	J	W Merritt	Freeholder	1
1352	Levins James	J	Part 5, W Oxford	Freeholder	1
1353	Logee S P	J	Part 21, N Francis	Freeholder	1
1354	Layton Robt	J	1, B W C	Freeholder	1
1359	Langmuir J A	J	Income	Freeholder	1
1360	Leeper Wm	J	12, 13, B W N	Householder	1
1362	Leeper Walter	J	Part 5, 6, E Duke	Freeholder	1
1302	Lee John	J	Part 2, S King	Freeholder	1
1364	Murray John	J	Part 1, E Oxford	Householder	1
1363	Mealey Johnson	J	11, E Oxford	Householder	1
1365	Murdoch James	J	5, W Thames	Freeholder	1
1366	Munro Henry	J	11, B W N	Freeholder	1
1367	Munro Robt	J	Part mill property	Freeholder	1
1368	Mairs Peter, jr	J	4, 5, W Thames	Freeholder	1
1369	Millar Chas	J	3, S Francis	Householder	1
1371	Menhinnick L C	J	4, 15, B W B	Householder	1
1374	Menhinnick T H	J	3, N Francis	Householder	1
1247	Mitohel D A	J	4, Cottage Ave	Freeholder	1
1479	Moore Major	J	6, W Thames	Freeholder	22
1377	McMillan John	J	Part 9, 10, B W N	Freeholder	1
1379	McInnes J A	J	Part 5, S King	Householder	1
1380	McKay A M	J	6, W Thames	Freeholder	1
1382	McKenzie A C	J	Part 15, S King	Householder	1
1383	McDonald James	J	Part 9, 10, B W N	Freeholder	1
1385	McKim Wm	J	Part 11, B W C	Freeholder	1
1386	McLeod James	J	14, 15, E Wouham	Freeholder	1
1387	McLeod Geo S	J	14, 15, E Wouham	Householder	1
1389	McDowell Wm	J	Part 11, 12, E Thames	Freeholder	1
1390	McCaughy S G	J	Part 21, E Whiting	Freeholder	14
1391	McKay Alex	J	3, 4, B W O	Freeholder	1

No. on Roll
 1393 Mc
 1395 Mc
 1396 Mc
 1398 Mc
 1276 Mc
 402 No
 1,03 No
 1405 No
 1406 O
 1407 O
 1409 O
 1413 O
 1414 O
 1418 Pe
 1420 Pa
 1421 Pit
 1424 Pa
 1426 Pol
 1428 Pel
 1429 Pre
 1431 Pa
 1433 Pa
 1435 Pet
 1437 Pot
 1306 Pa
 1440 Ri
 1442 Ri
 1446 Ry
 1449 Ro
 1451 Ru
 1453 Ri
 1455 Sel
 1456 Sco
 1457 Sco
 1458 Sm
 1460 Sla
 1461 Sm
 1462 She
 1464 Sm
 1465 Sm
 1468 Sim
 1471 Sud
 1473 Sni
 1474 Ste
 1476 Sin
 1481 Sm
 1227 Sha
 1415 Ste
 1483 Tri
 1484 Trip

THIRD WARD—SUBDIVISION NUMBER FIVE—Continued.

27

Post Office Address.	No. on Roll	NAME OF THE VOTERS.	Jurors	Description of Property in respect of which the Voter is entitled to Vote.	Freehold or Household.	Post Office Address.
1	1393	McMulkln F	J	10, 11, 12, 13, S Catherine	Householder	1
1	1395	McBain Wm	J	11, W Oxford	Householder	1
1	1396	McDonald J F	J	7, W Thames	Freeholder	1
1	1398	McMillan Donald	J	7, 8, W Merritt	Householder	1
1	1276	McKenzie John	J	8, E Oxford	Freeholder	1
10	1402	Nelles W B	J	Part 1, W Oxford	Freeholder	1
1	1403	Noxon Dorland	J	14, B W E	Freeholder	1
1	1405	Norris Frank	J	Part 8, E Oxford	Householder	1
1	1406	O'Connor Arthur, sr.	J	Part 21, E Albert	Freeholder	1
1	1407	O'Connor Henry, sr.	J	2, W Oxford	Freeholder	1
1	1409	Owons Thos	J	2, E Duke	Householder	1
1	1413	Oliver Wm	J	Part 3, E Wonham	Freeholder	1
1	1414	Oales N L	J	Part 3, E Oxford	Freeholder	1
9	1418	Perkins J L	J	Part 8, B W E	Householder	1
1	1420	Palmer John, sr.	J	3, B W C	Freeholder	1
1	1421	Pitman John	J	Part 3, W Oxford	Householder	1
1	1424	Park Lewis	J	3, B W N	Householder	1
1	1426	Polson John	J	11, B W D	Householder	1
1	1428	Pellow Joseph	J	Part 22, B F Con	Tenant	1
1	1429	Prentis Alex	J	7 to 12, B W B	Freeholder	1
13	1431	Palmer John, jr.	J	Part 6, B W D	Householder	1
1	1433	Pardoe Thos	J	Part 7, W Thames	Householder	1
1	1435	Peters John	J	Part 5, S King	Householder	1
1	1437	Potts Wm	J	Part 12, W Thames	Householder	1
1	1306	Paine T L	J	Part 2, W Oxford	Freeholder	4
1	1440	Richardson Harry	J	2, 13, 14, B W A	Freeholder	1
1	1442	Rice Wm	J	3, S King	Freeholder	1
1	1446	Ryan C B	J	Part 21, E Albert	Householder	1
1	1449	Robinson Thos H	J	6, 7, S Catherine	Householder	1
1	1451	Rufus Jno W	J	6, Oxford Ave	Householder	1
1	1453	Richardson J A	J	Income		1
1	1455	Seldon Thomas	J	6, 7, B W E	Freeholder	1
1	1456	Seofield Hy	J	12, S King	Freeholder	1
1	1457	Seofield Lyman	J	13, S King	Freeholder	1
1	1458	Smith J H	J	17, B W C	Freeholder	1
1	1460	Slawson C H	J	Part 9, 10, 11, 12, B W E	Freeholder	1
1	1461	Smith John	J	Part 21, E Whiting	Freeholder	1
1	1462	Sheldrick Saml	J	10, 11, B W C	Freeholder	1
1	1464	Smith R W	J	Part 6, B W D	Freeholder	1
1	1465	Smith George	J	6, 7, 8, N Catherine	Freeholder	1
1	1468	Simpson James	J	9, 10, B W A	Freeholder	1
1	1471	Sudworth W A	J	5, 14, B W B	Householder	1
1	1473	Snider Benjamin	J	Part 12, W Thames	Householder	1
1	1474	Stevens James	J	8, W Thames	Freeholder	1
1	1476	Sinclair James	J	Part 12, N Ann	Householder	1
1	1481	Smith A M	J	Income		1
1	1227	Shann Albert	J	Part 22, 1 Con W Oxford	Freeholder	15
1	1415	Stevens M L	J	Part 3, E Oxford	Freeholder	1
14	1483	Triggerson Jno	J	Part 11, S King	Householder	1
1	1484	Tripp Wm	J	3, 4, 11, 12, B W A	Freeholder	1

THIRD WARD—SUBDIVISION NUMBER FIVE—Continued.

No on Roll	NAMES OF THE VOTERS.	Jurors	Description of Property. in respect of which the Voter is entitled to Vote.	Freehold or Household.	Post Office Address.
1485	Thompson Lewis		J 3, 4, E Oxford		
1486	Thompson G A		J Part 10, 11, E Oxford	Freeholder	1
1487	Thompson Wm		J 1, 2, W Oxford	Freeholder	1
1488	Turner James		J Part 5, S King	Freeholder	1
1490	Tennant Wm		J Part 8, Block E	Freeholder	1
1492	Turner Geo A		J Part 5, S King	Householder	1
1494	Thompson G R		J Part 11, W Thames	Householder	1
1496	Vance James		8, 9, W Oxford		
1497	Vine James		10, W Oxford	Freeholder	1
1470	Williams James		5, 14, Block B	Freeholder	1
1425	Webster Geo		11, Block D	Freeholder	5
1498	Wilkinson John		J 9, 18, Block C	Freeholder	1
1500	Wilson C C L		Part 21, N Francis	Freeholder	1
1502	Woolson W A		J Part 9, Block E	Householder	1
1503	Wilson Leonard		6, Block B	Householder	1
1504	Worth John		Part 5, S Catherine	Freeholder	1
1505	Webster Geo H		10, 12, Block D	Freeholder	1
1507	Watt John		W Merritt part mill property	Freeholder	1
1508	Williams Geo		2, 3, S Ann	Householder	1
1510	Wells Thos		6, 7, W Duke	Freeholder	1
1511	Wallace Thos		21, W Wonham	Householder	1
1513	Watson G W		Part 10, S King	Freeholder	4
1514	Worth H		9, S Catherine	Householder	1
1515	Waterworth Wm		6, 17, 13, 14, Block O	Freeholder	1
1516	Wood E C		Income	Freeholder	1
1233	Wood James G		Part 10, E Oxford		1
1341	Wood Thos		12, 17, 18, Block B	Freeholder	1
1394	Wonham W G		10, W Oxford	Freeholder	1
1521	Young R H		Part 2, S King	Freeholder	16
					:

PART 2.

Persons entitled to Vote at Municipal Elections only.

No. on Roll	NAMES OF THE VOTERS.	Jurors	Description of Property in respect of which the Voter is entitled to Vote.	Freehold or Household.	Post Office Address.

PART 3.

Persons entitled to Vote at Elections to the Legislative Assembly only.

No. on Roll	NAMES OF THE VOTERS.	Jurors	Description of Property in respect of which the Voter is entitled to Vote.	Freehold or Household	Post Office Address.

THIRD WARD.

PART I.

List of Persons entitled to Vote at both Municipal Elections
and Elections to the Legislative Assembly.

Polling Subdivision No. 6.

*Bounded on the East by Thames Street, on the South by King Street, on the
West by the Township of West Oxford, and on the North by River Thames.*

No. on Roll	NAME OF THE VOTERS.	Jurors	Description of Property in respect of which the Voter is entitled to Vote.	Freehold or Household.	Post Office Address.
1523	Aldrich Frank		2, Blk F		
1524	Andrews John	J	Part 10, N Charles	Householder Freeholder	1 1
1526	Bowman John		Part 1, Blk K	Householder	1
1527	Buchanan John, Sr		Part 14, W Thames	Freeholder	1
1528	Buchanan James	J	Part 14, W Thames	Householder	1
1529	Buchanan Frank	J	Part 14, W Thames	Householder	1
1530	Badden James		Part 1, N Charles	Freeholder	1
1531	Boles John	J	6, 7, Blk M	Freeholder	1
1532	Brown P J		11, N Charles	Freeholder	1
1533	Brown Geo		8, Blk K	Freeholder	1
1534	Borland H	J	12, Blk F	Freeholder	1
1537	Benson J R		10, 11, 12, 13, Blk G; 3, 4, 8, 9, Blk J	Freeholder	1 8
1540	Browett J W		Part 2, W Thames	Householder	1
1541	Brown Geo		6, Blk K	Freeholder	1
1542	Bailey A C	J	6, Blk K	Householder	1
1543	Bowey Geo		2, Kings Terrace	Householder	1
1545	Burbanks Alfred		Part 20, N Charles	Householder	1
1547	Beck Geo	J	Part 1, W Thames	Householder	1
1549	Brouse J L	J	Part 4, W Thames	Householder	1
1557	Brown Thos		12, Blk J	Householder	1
1658	Boles James		12, N Charles	Freeholder	1
1660	Bearman F W		5, N King	Freeholder	1

No
on
Roll
1706
1766
1552
1553
1554
1555
1556
1557
1559
1561
1562
1749
1565
1567
1569
1571
1573
1574
1575
1576
1578
1579
1580
1581
1582
1586
1588
1600
1590
1592
1593
1595
1596
1597
1601
1604
1606
1606
1551
1609
1611
1613
1615
1617
1618
1619
1620
1622
1623
1625

No on Roll	NAMES OF THE VOTERS.	Jurors	Description of Property, in respect of which the Voter is entitled to Vote.	Freehold or Household.	Post Office Address.
1706	Baillie Byram B		14, 15, Blk G	Freeholder	1
1766	Bradbury Fred		Part 6, W Thames	Freeholder	1
1552	Carroll C A		Part 2, S Hamilton	Householder	1
1553	Cavanagh John	J	Part 14, W Thames	Freeholder	1
1554	Charlesworth Geo.		Part 2, N Charles	Freeholder	1
1555	Cragg Chas.	J	5, 6, E Barnet	Freeholder	1
1556	Colridge John	J	5, W Duke	Freeholder	1
1557	Choate David	J	Part 16, W Thames	Freeholder	1
1559	Capron J B.		Part 2, N King	Householder	1
1561	Connor Peter.		Part 12, 13, W Thames	Householder	1
1562	Cragg Henry.		Old Registry Office	Freeholder	1
1749	Cowie James.		Blk F L	Freeholder	26
1565	Daly A.		Part 8, N King	Freeholder	1
1567	Douglas Wm		2, W Oxford	Freeholder	5
1569	Dennis George		Part 6, N Charles	Householder	1
1571	Dynes George S	J	Part 13, W Thames	Householder	1
1573	Davidson D M	J	Part 10, W Thames	Householder	1
1574	Ellis A H		Part 3, W Thames	Freeholder	1
1575	Eggman Henry.		Part 3, W Church	Freeholder	53
1576	Findlay Matthew		3, S Charles	Freeholder	1
1578	Ferris George		Part 1, W Thames	Tenant	1
1579	Forbes George		13, Blk K	Freeholder	1
1580	Frezell Robt	J	1, W Oxford	Freeholder	1
1581	Fergusson C W		3, 4, W Duke	Freeholder	1
1582	Franks Joseph		3, Blk F	Freeholder	1
1586	Fitzgerald Daniel.	J	2, E Oxford	Householder	1
1588	Fooney Joseph H	J	12, Blk J	Householder	1
1600	Fvkes Sheldrick		3, 4, 16, Blk G	Freeholder	1
1590	Grey Benjamin.		Part 4, 5, W Thames	Householder	1
1592	Gusten James	J	7, Blk K	Householder	1
1593	Gr sett Geo F		Part 4, W Thames	Freeholder	1
1595	Goble Robt, Sr.	J	Part 5, W Charles	Householder	1
1596	Grigg Richard		Part 2, N King	Freeholder	1
1597	Goble Hy	J	Part 6, N Charles	Freeholder	1
1601	Gordon James	J	3, 4, 16, B k G	Householder	1
1604	Garbutt George		Part 6, N King	Householder	1
1606	Galloway W F	J	Part 7, N King	Householder	1
1606	Gammond F	J	Part 5, S Charles	Householder	1
1551	Gibbs Patrick		Part 2, S Hamilton	Freeholder	1
1609	Hugill E H	J	Part 4, W Thames	Householder	1
1611	Henderson J (col).		Part 5, N King	Householder	1
1613	Hough Patrick		19, Blk H	Householder	1
1615	Hegler J C.		Part Norsworthy Blk	Householder	1
1617	Holcroft W W		Part 4, 5, W Thames	Householder	1
1618	Haskett John	J	11, N King	Freeholder	1
1619	Holmes Caleb T	J	7, Blk F	Freeholder	1
1620	Hegler J H		1, 2, Blk G	Freeholder	1
1622	Holmes J W	J	Part 1, N King	Householder	1
1623	Henderson Thos	J	Part 11, N Charles	Freeholder	1
1625	Hill Chas A		4, Kings Terrace	Householder	1

No. on Roll	NAME OF THE VOTERS.	Jurors	Description of Property in respect of which the Voter is entitled to Vote.	Freehold or Household.	Post Office Address.
1627	Hicks Richard		Part 22, Blk H	Householder	1
1539	Holcroft Thos		Part 2, W Thames	Freeholder	18
1631	Joiner Mark	J	Part 5, W Thames	Householder	1
1633	Jones Henry		Part 8, Blk G	Householder	1
1534	Keating Robt	J	15, W Thames	Freeholder	1
1635	Kyle Wm		13, 14, Blk F	Freeholder	13
1636	King James		10, Blk J	Freeholder	1
1638	Kelsey Rufus	J	23, Blk H	Householder	1
1639	Kneeshaw Robt		Part 1, N King	Householder	1
1641	King Stephen	J	Part 6, W Thames	Householder	1
1643	Kerr Wm		5, Blk K	Householder	1
1644	Kerr W H		Part 4, W Thames	Freeholder	24
1610	Kenney Wm		Part 5, N King	Freeholder	1
1648	Lahey John		9, 10, Blk K	Freeholder	1
1650	May Robt J		9, Blk G	Freeholder	1
1651	May Robt A		J 9, Blk G	Freeholder	1
1652	Matheson Angus	J	16, N Charles	Freeholder	1
1653	Matheson George		J 6, 7, Blk F	Freeholder	1
1654	Myers Peter C		J 4, Blk F	Freeholder	1
1655	Mills Walter		Part 10, N Charles	Freeholder	1
1657	Mason John H		J 18, Blk H	Householder	1
1659	Mines Robt		J 12, N Charles	Householder	1
1661	Marsden J W		J 5, N King	Householder	1
1771	Murdoch Alex	J	Part 4, W Thames	Householder	1
1666	McDonald Robt	J	1, S Charles	Freeholder	1
1667	McCausland M B		Part 12, W Thames	Freeholder	25
1669	McMurray Wm	J	Part 10, W Thames	Householder	1
1670	McMurray Marshall	J	Part 10, W Thames	Householder	1
1671	McDonald John		Part 1, Blk K	Freeholder	1
1673	McLellan Wm		Part 5, N King	Householder	1
1674	Walsh John		7, W Thames	Freeholder	1
1675	McNeal John	J	7, W Thames	Householder	1
1677	McNiven Hope		3, 11, 12, Blk K	Householder	1
1679	McGinnis Dan		Part 22, Blk H	Householder	1
1680	McMulkin Chris'r		Part 22, W Thames	Freeholder	1
1774	McCarty N C		Part 1, N Charles	Freeholder	1
1640	McCleary & Sons		Part 6, W Thames	Freeholder	5
1589	McCaughy S G		Part 4, 5, W Thames	Freeholder	14
1577	McKinnon J M		Part 1, W Thames	Freeholder	5
1683	Nunn John	J	Part 1, Blk K	Householder	1
1684	Norsworthy J C		Norsworthy Blk	Freeholder	1
1686	Nevin James		4, N King	Freeholder	1
1687	Noxon T H	J	Income	Freeholder	1
1687	Noxon Stephen	J	Income	Freeholder	1
1690	Nelles W B		Part 2, W Thames	Householder	1
1691	O'Callaghan John		11, W Thames	Freeholder	1
1603	O'Callaghan James	J	11, W Thames	Householder	1
1694	O'Callaghan George	J	11, W Thames	Householder	1
1546	O'Connor Hy, Sr		Part 1, W Thames	Freeholder	1

No. on Roll	N
1626	O'Connell
1702	Pa...
1705	Pa...
1707	Ple...
1712	Re...
1550	Ru...
1637	Ri...
1741	Ri...
1743	Ro...
1716	Sa...
1718	Sh...
1719	Sr...
1722	St...
1725	St...
1726	St...
1728	St...
1730	St...
1731	St...
1732	St...
1733	St...
1735	St...
1736	St...
1737	St...
1742	St...
1522	St...
1558	St...
1570	St...
1600	St...
1744	St...
1745	St...
1748	St...
1750	St...
1754	St...
1755	St...
1756	St...
1758	St...
1759	St...
1760	St...
1761	St...
1763	St...
1764	St...
1765	St...
1768	St...
1769	St...
1770	St...
1771	St...
1772	St...
1773	St...

THIRD WARD—SUBDIVISION NUMBER SIX—Continued.

Post Office Address.

No. on Roll	NAME OF THE VOTERS.	Jurors	Description of Property in respect of which the Voter is entitled to Vote.	Freehold or Household.	Post Office Address.
1626	O'Callaghan Frank		Part 22, Blk H	Freeholder	1
1702	Partlo John		5, Blk F	Freeholder	1
1705	Patience C R		Part 4, 5, W Thames	Householder	1
1707	Pleasance Thos		14, 15, Blk G	Householder	1
1712	Roddy John		9, N Charles	Householder	1
1550	Ruwe Geo	J	Part 4, W Thames	Householder	1
1637	Richards Chas		23, Blk H	Freeholder	6
1741	Richardson G		Part 3, W Thames	Freeholder	1
1743	Robinson Albert	J	Part 3, W Thames	Householder	1
1716	Scott H H		Part 5, 4, N Charles	Freeholder	1
1718	Shaw Andrew	J	Part 8, N Charles	Freeholder	1
1719	Smale Wm	J	Part 4, Blk K	Freeholder	1
1740	Smith Andrew	J	3, S Charles	Freeholder	1
1722	Stallon Wm		8, N Charles	Householder	1
1725	Slawson C H		Part 5, W Thames	Freeholder	1
1726	Size John H	J	Part 1, S Hamilton	Freeholder	1
1728	Simister R A	J	Part Norsworthy Blk	Householder	1
1730	Siggins Samuel	J	Part 3, W Oxford	Freeholder	1
1731	Sutherland Andrew	J	Part 2, E Duke	Freeholder	1
1732	Smith James		2, 3, W Merritt	Freeholder	1
1733	Sherry Peter		2, 3, W Merritt	Householder	1
1735	Size Charles	J	11, Blk J	Householder	1
1736	Stimson G G		4, S Charles	Freeholder	1
1737	Simpson C W M	J	Income	Freeholder	1
1742	Skene Jas D	J	Part 3, W Thames	Householder	1
1522	Shirlock Frank		J 2, Blk F	Freeholder	1
1558	Scott Wm		Part 2, N King	Freeholder	19
1570	Stark James		Part 13, W Thames	Freeholder	1
1600	Stevens M L	J	Part 2, W Thames	Tenant	1
1744	Thompson John	J	2, S Charles	Freeholder	1
1745	Thompson Lewis		Part 6, N King	Freeholder	1
1748	Thompson Joseph	J	Part 1, E Oxford	Freeholder	1
1750	Terwillinger Rev		1, Blk F	Householder	1
1754	Vance Robt		Part 6, W Thames	Freeholder	1
1755	Walsh John		7, 8, 9, W Thames	Freeholder	1
1756	Williams J Arthur		8, N King	Freeholder	1
1758	Woodroofe R W	J	Part 2, W Thames	Householder	1
1759	Warnock J R		13, N Charles	Freeholder	1
1760	Walker I R		1, 2, N King	Freeholder	1
1761	Wilson J M	J	Part Blk L	Freeholder	1
1763	Ward John		Part 2, Blk K	Householder	1
1764	Walley G W		Part 4, W Thames	Freeholder	1
1765	Waterhouse James		Part 6, W Thames	Freeholder	1
1768	Walsh Michael		Part 7, W Thames	Householder	17
1769	Wood Thos		Part 7, W Thames	Freeholder	1
1770	Woolson Wm	J	Part 4, W Thames	Householder	1
1773	Wilkinson Wm	J	Part 6, N King	Householder	1
1775	Webb John		Part 1, N Charles	Householder	1
1776	Young R H		J 4, W Church	Freeholder	1
1778	Young S H	J	Part Blk L	Householder	1

PART 2.

Persons entitled to Vote at Municipal Elections only.

No. on Roll	NAMES OF THE VOTERS.	Jurors	Description of Property in respect of which the Voter is entitled to Vote.	Freehold or Household.	Post Office Address.

PART 3.

Persons entitled to Vote at Elections to the Legislative Assembly only.

No. on Roll	NAMES OF THE VOTERS.	Jurors	Description of Property in respect of which the Voter is entitled to Vote.	Freehold or Household	Post Office Address.

CERTIFICATE.

I hereby certify that the number of persons appearing on the Assessment Roll to be qualified to serve as jurors in the town of Ingersoll for the year 1884 is four hundred and fifty eight.

R. A. WOODCOCK, Town Clerk.

CERTIFICATE.

I, Ralph Alexander Woodcock, Clerk of the Municipality of the Town of Ingersoll, in the County of Oxford, do hereby certify that parts one and three of the within (or above) list constitute a correct list, for the year 1884 of all persons appearing by the last Assessment Roll of the said Municipality to be entitled to vote at elections for members of the Legislative Assembly; and that parts one and two constitute a correct list, for said year of all persons appearing by the said roll to be entitled to vote at Municipal Elections, in said Municipality; and I hereby call upon all Electors to examine the said list, and if any omission or other errors are perceived therein to take immediate proceedings to have the said errors corrected according to law.

Dated this 22nd day of September, A. D. 1884.

R. A. WOODCOCK,
Clerk of the Municipality of the Town of Ingersoll.

