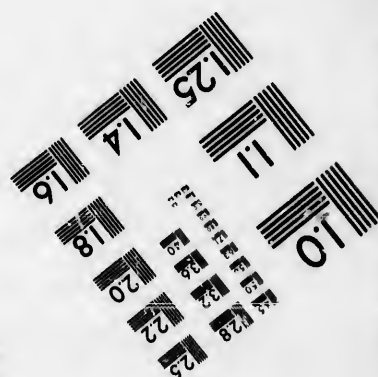
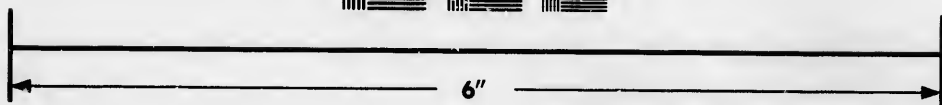
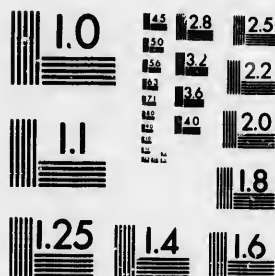


IMAGE EVALUATION TEST TARGET (MT-3)



Photographic
Sciences
Corporation

23 WEST MAIN STREET
WEBSTER, N.Y. 14580
(716) 872-4503

**CIHM/ICMH
Microfiche
Series.**

**CIHM/ICMH
Collection de
microfiches.**



Canadian Institute for Historical Microreproductions / Institut canadien de microreproductions historiques

© 1986

Technical and Bibliographic Notes/Notes techniques et bibliographiques

The Institute has attempted to obtain the best original copy available for filming. Features of this copy which may be bibliographically unique, which may alter any of the images in the reproduction, or which may significantly change the usual method of filming, are checked below.

- ☒ Coloured covers/
Couverture de couleur
- ☒ Covers damaged/
Couverture endommagée
- ☐ Covers restored and/or laminated/
Couverture restaurée et/ou pelliculée
- ☐ Cover title missing/
Le titre de couverture manque
- ☐ Coloured maps/
Cartes géographiques en couleur
- ☐ Coloured ink (i.e. other than blue or black)/
Encre de couleur (i.e. autre que bleue ou noire)
- ☐ Coloured plates and/or illustrations/
Planches et/ou illustrations en couleur
- ☐ Bound with other material/
Relié avec d'autres documents
- ☐ Tight binding may cause shadows or distortion along interior margin/
La reliure serrée peut causer de l'ombre ou de la distorsion le long de la marge intérieure
- ☐ Blank leaves added during restoration may appear within the text. Whenever possible, these have been omitted from filming/
Il se peut que certaines pages blanches ajoutées lors d'une restauration apparaissent dans le texte, mais, lorsque cela était possible, ces pages n'ont pas été filmées.
- ☒ Additional comments: /
Commentaires supplémentaires: There are some creases in the middle of pages.

L'institut a microfilmé le meilleur exemplaire qu'il lui a été possible de se procurer. Les détails de cet exemplaire qui sont peut-être uniques du point de vue bibliographique, qui peuvent modifier une image reproduite, ou qui peuvent exiger une modification dans la méthode normale de filmage sont indiqués ci-dessous.

- ☐ Coloured pages/
Pages de couleur
- ☐ Pages damaged/
Pages endommagées
- ☐ Pages restored and/or laminated/
Pages restaurées et/ou pelliculées
- ☒ Pages discoloured, stained or foxed/
Pages décolorées, tachetées ou piquées
- ☐ Pages detached/
Pages détachées
- ☒ Showthrough/
Transparence
- ☐ Quality of print varies/
Qualité inégale de l'impression
- ☐ Includes supplementary material/
Comprend du matériel supplémentaire
- ☐ Only edition available/
Seule édition disponible
- ☐ Pages wholly or partially obscured by errata slips, tissues, etc., have been refilmed to ensure the best possible image/
Les pages totalement ou partiellement obscurcies par un feuillet d'errata, une pelure, etc., ont été filmées à nouveau de façon à obtenir la meilleure image possible.

This item is filmed at the reduction ratio checked below/
Ce document est filmé au taux de réduction indiqué ci-dessous.

10X	14X	18X	22X	26X	30X
<input type="checkbox"/>	<input type="checkbox"/>	<input checked="" type="checkbox"/>	<input type="checkbox"/>	<input type="checkbox"/>	<input type="checkbox"/>
12X	16X	20X	24X	28X	32X

The copy filmed here has been reproduced thanks to the generosity of:

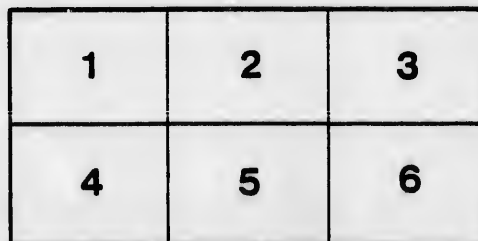
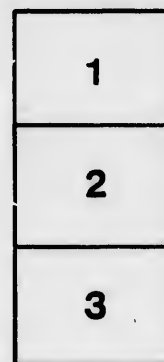
D. B. Weldon Library
University of Western Ontario
(Regional History Room)

The images appearing here are the best quality possible considering the condition and legibility of the original copy and in keeping with the filming contract specifications.

Original copies in printed paper covers are filmed beginning with the front cover and ending on the last page with a printed or illustrated impression, or the back cover when appropriate. All other original copies are filmed beginning on the first page with a printed or illustrated impression, and ending on the last page with a printed or illustrated impression.

The last recorded frame on each microfiche shall contain the symbol \rightarrow (meaning "CONTINUED"), or the symbol ∇ (meaning "END"), whichever applies.

Maps, plates, charts, etc., may be filmed at different reduction ratios. Those too large to be entirely included in one exposure are filmed beginning in the upper left hand corner, left to right and top to bottom, as many frames as required. The following diagrams illustrate the method:



L'exemplaire filmé fut reproduit grâce à la générosité de:

D. B. Weldon Library
University of Western Ontario
(Regional History Room)

Les images suivantes ont été reproduites avec le plus grand soin, compte tenu de la condition et de la netteté de l'exemplaire filmé, et en conformité avec les conditions du contrat de filmage.

Les exemplaires originaux dont la couverture en papier est imprimée sont filmés en commençant par le premier plat et en terminant soit par la dernière page qui comporte une empreinte d'impression ou d'illustration, soit par le second plat, selon le cas. Tous les autres exemplaires originaux sont filmés en commençant par la première page qui comporte une empreinte d'impression ou d'illustration et en terminant par la dernière page qui comporte une telle empreinte.

Un des symboles suivants apparaîtra sur la dernière image de chaque microfiche, selon le cas: le symbole \rightarrow signifie "A SUIVRE", le symbole ∇ signifie "FIN".

Les cartes, planches, tableaux, etc., peuvent être filmés à des taux de réduction différents. Lorsque le document est trop grand pour être reproduit en un seul cliché, il est filmé à partir de l'angle supérieur gauche, de gauche à droite, et de haut en bas, en prenant le nombre d'images nécessaire. Les diagrammes suivants illustrent la méthode.

ails
du
odifier
une
image

rrata
to

pelure,
n à



32X

**CANADIAN
JOINT
FREIGHT**



CLASSIFICATION

No. 9

TAKING EFFECT

JUNE 1st, 1893

Superseding Classification No. 8
of October 1st, 1891, and Supplement
thereto.

NOTE IMPORTANT CHANGE

MAIL JOB PRINT

SUPPLEMENT No. 2

TO

Canadian Joint Freight Classification, No. 9,

of June 1st, 1893.

Taking Effect Feb. 12th, 1894

Including and superseding items
in Supplement No. 1

SPECIAL REGULATIONS AND CONDITIONS.—Add—Goods in paper packages should be shipped by express ; or if by freight, in oiled or heavy brown paper, well wrapped and corded.

	L.C.L.	C.L.
Page 6. Agricultural Implements:—		
Cutters, Straw and Ensilage, handles, feed boxes, carriers and wheels (if outside main frame) off	2	
Same K. D. flat	2	
" 7. Fanning Mills—in common cars 34 feet long and under, minimum 12 000 lbs. Hay Presses—loaded in box cars. Hay Tedders—Erase "shafts, wheels and forks off—1"	2	4
Powers, Tread Mill—K.D. and loaded in box cars	1	
" 9. Axes—with handles, in cases	3	5
" 10. Baskets.—Erase "or Willowware in cases or boxes D 1." See Willowware, page 55.		
Bath Tubs.—Add—In carloads, common cars, 31 ft. long or under, minimum 12,000 lbs. In furniture cars, or racked platform cars, minimum 20,000 lbs		4
" 11. Boats.—Canoes, loaded in box cars, loose, or crated separately, minimum 600 lbs. each	1	
Two crated together, minimum 700 lbs	1	
Three crated together, minimum 800 lbs	1	
Boats—Skiffs and pleasure boats, 17 feet and under, minimum 800 lbs. each. O. R. released	1	
Erase "Skiffs nested, same as Canoes nested."		
" 11. Boxes, Wooden, empty, prepaid (Minimum 20,000 lbs.)	14	10
Bottle Caps.—Tin or metal foil	2	
" 13. Cable—Telegraph or Telephone on Reels	3	5
" 14. Car Trucks	4	7

	L.C.L.	C.L.
Page 15. Rice Meal.....	3.....	5
Preserves, in glass or stone, well packed, O. R.....	1.....	4
" 15. Coal Saving Compounds.....	3.....	5
Coal Screens, large.....	1	
Cocoa—Condensed, essence or extract, in glass—packed.....	1.....	5
" —Condensed, essence or extract, in cans—boxed.....	3.....	5
Coffee—Condensed, essence or extract, in glass—packed.....	1.....	5
" Condensed, essence or extract, in cans, boxed.....	3.....	5
Concentrated Lye.—See Lye, page 38.		
" 17. Cotton Waste—in pressed bales O. R. of fire—lots under 10,000 lbs.....	3	
" " in pressed bales O. R. of fire—lots 10,000 lbs. and over.....	4.....	5
Curtain Rollers and Slats—in bundles, wrapped, crated or boxed.....	3.....	4
" 18. Dulce.....	2.....	4
" 19. Electric Light Bulbs) Erase classification here.		
" " Globes) See Glassware, page 25 as amended		
" 20. Fire Kindlers—Composition.....	3.....	5
" 21. Fly Paper in bundles, crates or cases ..	1	
" 22. Furniture.—Bamboo Easels and Screen Frames—in bundles.....	3-1	
" " Bamboo—completely K. D. and shipped in bundles.....	D1	
" " Chairs—Dentist's, Barber's or Reclining, K. D. or folded and boxed.....	1	
" 23. " Bamboo, Rattan, Reed, or Willow, not otherwise specified, set up	4-1	
" " Same, boxed or crated	3-1	
" " Same, K. D. flat, boxed or crated.....	D1	
" " Reed Goods—Erase "Same as Rattan Goods."		
" " Willow or Rattan—Erase "Willow or Rattan."		
" " Lounges, backs off, or without backs, wrapped, crated or boxed.....	1½	
" 24. Gasoline.—Same as Coal Oil.		
Glass.—Common Window—over 80 united inches, O. R. released.....	1.....	5
" 25. Glassware.—Bulbs, Electric Light, O. R., minimum C. L. 16,000 lbs. 3.....	3	
" " Globes, Electric Light, O. R., minimum C. L. 16,000 lbs.....	D1	3
" " Cut, O. R., in packages.....	D1	
" " Lamp Chimneys, O. R. breakage.....	2.....	5
" 26. Gunpowder—Common black—read, in fire proof iron magazines, or in kegs or cans securely packed in cases, and to be marked "Gunpowder"		
Handles, Wood, rough or finished.....	3.....	6

Page 26. Hardware.—Counter Paper Cutters	2
" Grain Cradles set up	4-1
" " K.D. and boxed D	1
" 27. " Mixed Cars—add Grain Cradles.	
" 23. Iron—Axles, for Children's Carriages or Express Wagons—in bbls. or pkgs.	3.....5
" Doors	3.....5
" Tanks or Cisterns	D1.....5
" 31. Joiner's Work.—Blind or Shutter Slats, in bundles, crates or boxes	3.....6
" Koa line—in packages	3.....5
" 32. Lead—Pipe—Telegraph or Telephone, on Reels	3.....5
" 38. Lumber—Ship Knees—minimum 24,000 lbs. per car	4.....6
" 39. Machinery.—Not otherwise specified, closely boxed, or crated, O.R.	1
" 41. Meats—Minced, in pails, crated. Same as Preserves, in pails, crated.	
" 43. Musical Instrument—Mouth Organs—Same as Toys	
" Oxide of Iron—in boxes or bbls	3.....5
" Paper Hangings, in boxes	1.....3
" in bundles or bales	2.....3
" Paper—Scrap or waste—in bags, sacks or crates	2.....10
" " Scrap or waste—in pressed bales	4.....10
" Paper Stock.—Erased.	
" 44. Pencils, Slate, in boxes	2
" 45. Pumps—Wood	1.....4
" Iron. See "Iron."	
" Rags and Paper Stock.—Erase "Paper Stock."	
" Range Boilers. See "Boilers," page 11.	
" 46. Sand Screens	1
" Sea Grass, in bales	1.....7
" 47. Shoddy—in pressed bales, O.R. of fire, lots under 10,000 lbs.	3
" in pressed bales, O.R. of fire, lots 10,000 lbs. and over	4.....5
" Sifters—Ash or Coal. Add "Hand."	
" Soap.—Fancy, Castile or Toilet, domestic	2.....5
" 49. Stoves—Portable ovens	1½
" 50. Tartaric Acid—Same as Acids Dry, p. 6.	
" Tea—Condensed, essence or extract in glass—packed	1.....5
" Condensed, essence or extract in cans—boxed	3.....5
" Terra Alba Clay, in boxes	3.....7
" in bbls. or casks	4.....7
" 52. Vehicles—Sulkies & Road Carts, wheels, shafts, whiffletrees and baskets off and shipped in separate pieces.	1½
" 53. Vehicles.—Farmers' Wagons, Lumber Wagons, Carts and Sleighs, minimum 20,000 lbs.6
" (Farmers' Wagons, Lumber Wagons, Carts and Sleighs, in box cars 34 feet long or under, may be taken at minimum 12,000 lbs. 4th class—same as other vehicles—in cases where 12,000 lbs. or over at 4th class would be charged less than 20,000 lbs. at 6th class)	

Page 53. Vehicles—Erase " Children's Carriage
Wheels and Handles, shipped separately, in bundles
or crates D.I."

" 54. " Children's Express Wagons, K.D., boxed or racked.....	1
" 55. Whiting, in boxes	3.....7
" " in bbls. or casks	4.....7
Window Shades, boxed4
Woodenware—Bowles, nested, crated or boxed	2
Wood Preservative, liquid, in wood.....	3.....5
Wood Pulp and Fibre, dry	4.....7
" " wet	4.....10

ESTIMATED WEIGHTS :

Page 53. Cordwood—Pulp Wood, Spruce, per cord of 128 feet.....	Green. Lbs.	Dry. Lbs.
	4800	4000
Tamarac, per 1000 feet ..4000	Partly Green. Seasoned. Lbs.	Dry. Lbs.
	3500	3000

Issued by Classification Committee.
Toronto, Feb. 6th, 1894.

JOHN EARLS,

Chairman.

CANADIAN

Joint Freight

CLASSIFICATION

No. 9, JUNE 1st, 1893

ADOPTED BY

BAY OF QUINTE RAILWAY & NAV. CO.
BOSTON & MAINE RAILWAY (in Canada).
BROOKVILLE, WESTPORT & SAULT STE. MARIE
RAILWAY.
BUOTOUCHE & MONCTON RAILWAY.
CANADA ATLANTIC RAILWAY.
CANADA EASTERN RAILWAY.
CENTRAL ONTARIO RAILWAY.
CENTRAL VERMONT RAILROAD (in Canada).
CUMBERLAND RAILWAY & COAL CO.
ERIE & HURON RAILWAY.
GRAND TRUNK RAILWAY.
INTERCOLONIAL R'Y.
KINGSTON & PEMBROKE RAILWAY.
KINGSTON, NAPANEE & WESTERN R'Y.
LAKE ERIE & DETROIT RIVER R'Y.
MAINE CENTRAL RAILWAY (in Canada).
MANITOBA & NORTH-WESTERN RAILWAY.
MICHIGAN CENTRAL RAILROAD (Canada Division).
NEW BRUNSWICK & PRINCE EDWARD ISLAND
RAILWAY.
NIAGARA CENTRAL RAILWAY.
NOVA SCOTIA CENTRAL RAILWAY.
NORTHERN PACIFIC & MANITOBA R'Y.
OTTAWA & GATINEAU VALLEY RAILWAY.
PRINCE EDWARD ISLAND RAILWAY.
QUEBEC CENTRAL RAILWAY.
QUEBEC & LAKE ST. JOHN RAILWAY.
TEMISCOQUATA RAILWAY.
THOUSAND ISLANDS RAILWAY.
TORONTO, HAMILTON & BUFFALO RAILWAY.
WESTERN COUNTIES RAILWAY.
WINDSOR & ANNAPOLIS RAILWAY.

Previous issues of Canadian Joint Freight Classification.

No. 1, Jan. 1st, 1884.

No. 2, June 1st, 1884.

No. 3, April 1st, 1885.

No. 4, May 10th, 1886.

No. 5, May 1st, 1888.

No. 6, April 15th, 1889.

No. 7, Feb. 10th, 1890.

No. 8, Oct. 1st, 1891.

Explanation of Terms and Characters used

The number of the Class is given opposite each article :—
1, 2, 3, 4, 5, 6, 7, 8, 9, 10, stand for first, second, third, fourth, fifth, sixth, seventh, eighth, ninth and tenth classes respectively ; $1\frac{1}{2}$ stands for once and a-half first class ; D-1 for double first class ; 3-1 for three times first class ; 4-1 for four times first class ; O.L. stands for oarload ; L.O.L. for less than oarload ; O. R. stands for owners' risk ; K. D. stands for knocked down ; S. D. stands for single deck ; D. D. for double deck.

Articles not enumerated should be classed with similar or analogous goods.

For Tables of Estimated Weights, etc., see pages 57-60.

Special Regulations and Conditions

Rule 1. The minimum weight for carloads of 1st, 2nd, 3rd, 4th, 5th, 6th and 9th Class Freights, is 20,000 lbs. per car ; and for 7th, 8th and 10th Class Freights, 24,000 lbs. per car, unless otherwise specially stated. Carloads to be entitled to C.L. rate, must be from one Shipper to one Consignee. All cars may be loaded up to their full capacity at L.C.L. or C.L. rates, as the case may be. Refrigerator cars, when supplied for perishable or other freight, will be charged ordinary rates for 1st, 2nd, 3rd, 4th, 5th or 6th Class traffic, but if traffic lower than 6th Class be loaded the minimum charge will be C.L. at 6th Class rate.

2 Mixed freight will not be taken at C.L. rate, but each description must be weighed, and charged as per classification, except as otherwise provided for in this classification, but when a number of different articles of the same class in carloads embraced in one line of trade are shipped at one time by one shipper to one consignee at one point of delivery, in full carloads, they shall be taken at the rate per hundred pounds for such class in C.L. This rule will not apply on mixed shipments of Groceries, Hardware, Dry Goods, Iron, etc., but only to different articles of one straight line of trade. In order to entitle a shipment to the carload rate, a quantity not less than the minimum carload weight must be delivered at one station, in one day, consigned to one consignee and destination. Agents at destination will not distribute carload shipments of property among two or more consignees. Agents will not send notice of arrival to more than one party, and will make only one expense bill for the charges on the entire carload. In case one party will not accept notice of arrival as consignee and pay the charges on the entire carload and take delivery of the same, agents are required to make separate notices and expense bills, and correct the way-bill and collect on each shipment at the less than carload rate.

3. When more than the carload weight of one article is shipped in one day by one consignor to one consignee, the established rate for a carload should apply on the entire lot, although it may be less than two full carloads, (except as noted in latter part of this rule) ; the actual weight of the balance to be charged for at the C.L. rate, reference being made on the waybill for the balance of the lot, to the waybill for the full carload or loads.

This, however, will not apply on shipments of Agricultural Implements, Machinery, Live Stock, Vehicles, Furniture, Woodenware, Baskets, Empty Barrels, Casks or Boxes, Flour, Hay, Coal, Scrap Iron, and all bulk freights commonly carried in C.L. lots, as Grain, Mill Feed, Lumber and other rough forest products, Joiner's Work, Lime, Brick, etc.; also all light or bulky goods which will not load 20,000 lbs. per car. In all such cases excess lots for which an extra car is necessary will be charged at the L.C.L. rates.

4. Freight from one Shipper to one Consignee should not be charged more for a smaller than for a greater quantity where varying quantities of the same description of goods are classed differently. For instance; 129 bbls. apples or under should not be charged more than for 130 bbls.; 140 bbls. flour should not be charged more than for 150 bbls.; nor should an L.C.L. weight at a higher class be charged more than the sum for a C.L. where C.L. classification of the same freight is given.

5. Where C.L. is not quoted, the classification given is to apply irrespective of quantity.

6. All articles, except as otherwise specified, will be taken at actual gross weight, provided, however, that any article not otherwise provided for herein, too large to be loaded in an ordinary box car and requiring a platform car for carriage (whether full capacity of car be occupied or otherwise), if 6,000 lbs. weight or under will be charged a minimum of 20,000 lbs. 10th Class, if over 6,000 lbs. and up to 12,000 lbs. will be charged a minimum of 20,000 lbs. at 7th Class, and if over 12,000 lbs. a minimum of 20,000 lbs. at 6th Class. These minimums will not apply in cases where the actual gross weight as per Classification would give a higher charge. This arrangement will not apply west of Port Arthur.

7. All articles marked at O.R. in this Classification, must be so receipted for by Agents, and the words OWNERS' RISK written in full on the Shipping Notes and Receipts. Articles marked RELEASED must also be so receipted for, and Shippers or Owners must duly execute a Release in Duplicate on the Company's Forms. Provided, however, that in cases where shippers decline to accept such receipts endorsed "owner's risk," or to sign such releases, the goods may be received for shipment on ordinary shipping notes and receipts without above endorsement at fifty per cent. in addition to the rates which would be charged if

shipped at owner's risk ^{or} released, with the exception of plate glass, which will be at double the rates which would be charged if shipped at O.R. Released.

8. Special attention is directed to articles marked as "Not taken unless by special contract, etc." Agents must always apply for rates, and for permission to carry such traffic before accepting or receipting for it.

9. DYNAMITE, DUALINE, GUN COTTON, GIANT POWDER, HERCULES POWDER, OR OTHER EXPLOSIVE COMPOUNDS not provided for in this Classification, will not be received or transported.

10. Grain, Bran, Feed, Malt, etc., in bulk, and all other bulk Freight, must always be receipted for "more or less," and these words written in full. Agents, however, must in all cases obtain from shippers a full statement or declaration on shipping bills of the correct quantity of all bulk freight loaded in or

on each car: such declaration should show quantity, weight or measurement, in accordance with the common or commercial standard under which such traffic is sold, such as:—Bush, Wheat, Peas, Barley, Potatoes, etc. Tons Bran, Feed, etc. Square feet, or toise Stone, etc. Feet (board measure) Lumber, etc. Thousands Lath, Shingles, Staves, etc. Cords Wood, Stave Bolts, Bark, Posts, Shingle Bolts, Slabs, Polcs, etc.—with statement as to description, and whether "green," "partly seasoned," or "dry," of all forest products. In signing receipts, agents must be particular to note "said to be" as to quality and "more or less" as to quantity.

11. All heavy Freight, of 2,000 lbs. or over per piece or package, of 1st, 2nd, 3rd, 4th and 5th Classes; also heavy Freight, and all bulk Freight, in 6th, 7th, 8th, 9th and 10th Classes, is to be loaded and unloaded by Owners. At points where the Companies provide a cartage service, it must be understood that heavy articles, and bulk Freight above referred to, will not be carted or handled by the Companies, unless by special arrangement, and at the expense of the Owner, in addition to the rate.

12. BULK FREIGHT in less than car loads will not be taken.

13. When Fruit, Vegetables and other property, liable to damage by frost, are shipped in winter (Nov. 1st to April 30th, except as per Note below), one man will be passed free with one or more cars to care for the fires and protect the property from freezing. No return pass to be given. The stoves, if returned, to be charged same as "empties returned." When Shippers put stoves in cars, Agents must see that all reasonable precaution is taken against damage to the car or train, and receipts in all such cases must be given at "Owners' risk of fire." Passes will not be given to men in charge of Trees or Shrubbery.

NOTE.—Perishable Freight for Manitoba and the North-West must be prepaid between October 10th and May 20th.

14. Agricultural Implements, Machinery, Vehicles, and other bulky traffic on flat cars, should not be loaded to exceed eleven feet six inches in extreme height above the top of the rail, and nine feet in extreme width, and should be well secured by iron rods, wire, or wooden bars passing over the load and connecting the upper ends of the stakes in such a manner as to prevent spreading. When these conditions are not complied with, the Companies reserve the right to either refuse the freight, or to remove any excess from the car and forward it on another car, at full rates as per classification.

15. In all cases in this Classification the terms "in boxes, barrels, or packages," must be understood to mean that the boxes, barrels, or packages must be complete with headings of same material, so as to thoroughly protect the contents—canvas or wire headings not being considered sufficient.

16. Contents of all packages, as near as possible, must be stated on shipping notes, and any package containing articles of more than one class will be charged the rate for the highest classed article contained therein.

17. Small consignments of one class (except Gunpowder), or including articles of several classes, will be charged at actual weight, according to the classification of each article, but no single shipment will be taken for less than 100 lbs., at 1st class; minimum charge, 35 cents, which will include cartage at one cartage point, and 45 cents if carted by the Companies' cartage agents at two cartage points.

CLASSIFICATION

-A-

	L.C.L.	C.L.
Acetate of Lime, in packages.....	4	7
Acids, in carboys, less than 2,000 lbs., O.R.....	D 1	
" in carboys, 2,000 lbs., and over, O.R.....	1	
" in carboys, C.L., O.R.....		4
" in iron drums, O.R.....	3	5
" Dry, in boxes or bbls.....	2	4
" Acetic, in demijohns, O.R.....	1	
" " in bbls.....	2	4
Acids must not be taken for shipment by water, unless by special contract.		
Acorns.....	2	4
Actinolite.....	4	10
Adamant Plaster.—Same as Plaster.		
Advertising Cards or Labels, in bbls., O.R.,		
" " " prepaid.....	1	3
" " " in boxes.....	2	4
" Boards in bundles, O.R., prepaid.....	2	4
Aerated Waters.—Same as Ale.		
Agate Ware, not otherwise specified.....	1	
" " " nested.....	2	4
Agolite or Mineral Pulp.....	4	7
Agricultural Implements, as follows (subject to note at foot of this article):		
Binders.—Binder Trucks or Sheaf-Carriers,		
" set up.....	D 1	
" K.D.....	2	
Corn Cutters, Shellors.....	D 1	
" Planters.—Same as Cultivators.		
Cleaners, Grain.....	D 1	
Clover Hullers.....	D 1	
Crushers, Clod.....	1½	
" Grain.....	1	
" Grain, hoppers off.....	2	
Cradles, Grain, set up.....	4-1	
" K.D. and boxed.....	D 1	
Cultivators—set up.....	D 1	
" K.D.....	2	
" Hand, set up.....	D 1	
" K.D.....	1	
Cutters—Straw and Ensilage, set up.....	1½	
" Straw and Ensilage, handles, feed boxes, carriers and wheels (if outside main frame) off.....	1	
" K. D. flat.....	1	
" Itot, set up.....	1½	
" Handles and legs off.....	2	
Drills or Seeders, set up.....	D 1	
" Handles, poles, whiffletrees, levers, etc., detached and bundled or crated (wheels on or off).....	2	

Agricultural Implements—(Continued):

Fanning Mills, set up.....	D	1
" " K.D. and tied in bundles.....		1
" " Common cars, 34 feet long and under; minimum, 14,000 lbs.....		4
" " Furniture cars, or racked platform cars; minimum, 20,000 lbs.....		4
Harrows, Wooden, set up.....	D	1
" " K.D. in bundles.....		1
" " Iron, set up.....		1
" " K.D. in bundles.....		2
" " Disc, set up.....		1
" " K.D.		2
Harrow Frames, without teeth, K.D. in bundles.....		2
Hay or Straw Stackers, or Rickers, K.D. flat, tied in bundles, wheels racked, actual weight.....		1
Hay Carriers, in pkgs.....		1
Hay Loaders, K.D., and closely packed.....		1
Hay Pitchers, K.D.....		1
Hay Tedders, set up.....	D	1
" " shafts off and wheels detached.....		2
" " shafts, wheels and forks off....		1
Manure Spreaders, on wheels, set up.....	1½	
" " wheels off, K.D.....		1
Mowers, Field, K.D.....		2
" " Lawn, set up.....	1½	
" " Lawn, K.D., boxed, handles boxed or in bundles.....		2
Ploughs, Common, set up.....	D	1
" " K.D., handles detached and tied in bundles.....		2
" " Gang, Shovel or Sulky, set up.....	D	1
" " Gang, Shovel, Sulky or Riding, seats, poles, levers, etc., taken off and bundled or crated (wheels on or off).....		1
Plough Beams, wooden.....		3
Potato Diggers—common, set up.....	D	1
" " K.D., handles detached and tied in bundles.....		2
Powers, Dog.....	D	1
Powers, Horse, Pitt's or Sweep.....	1½	
" " Tread or Endless Chain.....	3-1	
" " K.D. and loaded in box cars..	1½	
" " Steam (Portable Engines).....		1
Presses, Hay, set up, if loaded in box cars....	1½	
Presses, Hay, K.D.....		1
Rakes, Horse, set up.....	D	1
" " K.D. (teeth off and shipped in bdl.).....		2
" " Hand, Wooden.....	D	1
Reapers, Single (or Harvesters), K.D.....		2
Reaper and Mower Knives.—See Hardware.		
Reaping and Mowing Machines (combined), shipped in pieces.....		1
Rollers, Field, set up.....	1½	
" " K.D., seats and shafts off.....		1
" " Lawn or Garden (wood).....	1½	
" " " (iron).....		1
Seeders—Same as Drills.		
Sowers, Hand, Grain or Seed, set up.....	D	1
" " " K.D.		1
Sweep Rakes, K.D. flat, tied in bundles, wheels racked.....		1

Agricultural Implements—(Continued):	
Threshers, or Separators.....	3-1
Threshers or Separators, K.D. and loaded in box cars.....	1
Agricultural Implements, not otherwise specified, light and bulky.....	D 1
“ “ All kinds.....	6
Agricultural Implements and parts thereof, when returned to original manufacturers for repairs, by same route or line by which originally forwarded, to be one class lower than the tariff on new implements, but not less than 10th class.	
NOTE.—Agricultural Implements, of 2,000 lbs. per piece or over, to be loaded and unloaded by owners.	
NOTE.—Agricultural Implements are at Owner's risk of breakage and chafing, and loss of small parts, in each and every case. For charges on any shipment of Agricultural Implements too large to be loaded in an ordinary box car, and requiring a platform car for carriage (whether full capacity of car be occupied or otherwise), see rule 6.	
Air Brake Appliances.....	3.....5
Alabastine.....	4.....7
Alcohol, spirit or wood—Same as Liquors.	
Ale, Beer and Porter (bottled), in open cases. O.R., released.....	D 1
“ “ (bottled), in boxes or barrels, O.R.....	3.....5
“ “ in wood, O.R. fermenting, freezing or leakage.....	3.....5
“ “ mixed cars, bottles packed in boxes or barrels, and in wood... Ale, Beer and Porter must be prepaid between 1st November and 30th April.5
Almonds—See Nuts.	
Alum, in boxes.....	2.....4
“ in barrels or casks.....	3.....5
Ammoniacal Liquors, in wood.....	3.....4
“ Waters, in carboys.....	1.....4
“ in bottles, packed in wood	1
Ammoniacal Waters, in bbls. or drums.....	3.....4
Ammonia, Carbonate, in jars, packed in wood	1
“ in kegs.....	2.....4
“ Sulphate of, in casks, bbls. or drums	3.....4
Ammunition. Taken by special contract only.	
Anchors.—See Iron.	
Aniline Oil, in cans, packed in wood.....	3.....4
Animal Pokes.....	1.....6
Animals, Stuffed—See Stuffed Birds, etc.	
“ Heads, Mounted, O.R., prepaid.....	3-1
“ in the rough, in pkgs., O.R., prepaid.....	1½
Annato, in glass, O.R.....	1
“ in stone jars, packed in wood.....	2.....4
Anthracine (dry), in barrels.....	2.....4
Antimony.....	2.....4
Anvils—See Iron.	
Apples—See Fruits.	
Archery, in boxes.....	D 1
Argols.....	3
Arrowroot, in boxes or barrels.....	1
Arsenic, in boxes or barrels.....	1
“ crude, in barrels.....	2.....4

A.—Continued.	B.	L.C.L.	C.L.
Artists' Materials, O.R.		1	
Asbestos, Manufactured, in packages		2	4
" (crude)		3	6
" Cement		4	10
Ashes, Pot, Pearl and Soda, in boxes, barrels or casks		4	5
" Coal or Wood, in bulk			10
Ash Boilers and Kettles		2	4
Asphaltum		3	5
Axes, in boxes, barrels or casks		3	5
Axle Grease, in cans or buckets		3	5
" in boxes, barrels or casks		4	5
Axles, Iron.—See Iron.			
" Wood		3	6
Awnings.—See Tents.			

-B-

Babbit Metal		3	5
Baby Jumpers, in boxes		1	
Backing, for Picture and Looking-glass Frames, in bundles		4	7
Bacon.—See Meats.			
Baggage, Military. Taken by special contract only.			
Baggage Trucks or Barrows.—See Vehicles.			
Bags and Bagging, in bales		3	5
Bags, in bags		2	5
" used in transporting Flour, Grain or Vegetables over same Road.—See Empties Returned.			
Baking Powder		2	4
Balls, Sportsmen's, glass, in boxes or bbls., O.R., prepaid		2	4
" or Birds, clay, Sportsmen's, in boxes or bbls., O.R., prepaid		3	5
" Cricket, Baseball, etc.		2	
Balsam—(crude gum), in bbls.		3	5
Balusters.—See Joiners' Work.			
Bamboo—in bundles or cases	D 1		
Band Boxes, not boxed or crated, O.R.		4	1
" " nested and crated O.R.		3	1
" " nested and boxed, O.R.	D 1		
Barilla		2	4
Bark, Extract of, in casks, O.R.		2	4
" Tanners, box cars 30 feet or under, minimum 20,000 lbs., flat cars and box cars over 30 feet, 24,000 lbs.			7
" Ground, in barrels, casks or sacks		3	5
" Slippery Elm, in boxes, barrels or bundles		1	
Barley, Pearl, Pot and Common.—See Grain.			
Barrels, Empty—Flour, Sugar and Apple, prepaid	D 1		
" " Ale, Oil, and other iron hooped barrels, casks or kegs, prepaid		1½	
" " all kinds, C.L., 20,000 lbs., p'd returned.—See Empties R't'd.			10
Barrel Covers		1	7
Barytes		3	5
Baskets, wicker, willow or rattan	4-1		
" wicker, willow or rattan, nested in bundles or crated	D 1		
" stave and splint, nested, handles off or turned down		1½	

B.—Continued.

L.C.L. C.L.

Baskets, flag, for mechanics' tools, nested.....	D 1
“ delivery, with compartments for bottles.....	3-1
“ over-handled, in bundles, with ends placed in each other.....	3-1
“ or Willowware, in cases or boxes.....	D 1
“ all kinds, C.L. 20,000 lbs.....	10
Bath Brick, in barrels or boxes.....	3.....5
Bath Tubs, wood, tin, iron or copper.....	D 1.....4
“ wood, tin, iron or copper, nested or boxed.....	1.....4
Batting, in bundles, O.R.....	D 1
“ in bales or cases.....	1
Baseball Bats, in bundles.....	2
“ in boxes.....	3
Bay Rum, in glass or stone, packed in wood, O.R.....	1
“ in wood.....	2
Beans.—See Grain.	
Bedding.—See Household Goods.	
Bedsteads, Iron.—See Iron.	
Bedsteads, Wood.—See Furniture.	
Bee Hives, set up.....	D 1.....4
“ nested.....	1.....4
“ K.D., in bundles, or packed in boxes or hives.....	3.....5
Bees, in Hives, O.R., released.....	3-1.....3
Owners to load and unload. Man in charge of carload lots passed free.	
Bees' Wax.....	1
Beer.—See Ale.	
Beets.—See Vegetables.	
Bellows, O.R., released.....	1
Bells, O. R.....	1
“ Small, in cases.—See Hardware.	
“ Cow, in cases.....	2
Belting, Leather or Rubber, O.R.....	2.....4
Bent Stuff.—See Carriage Goods.	
Benzine or Benzole, in wood.—Same as Coal Oil. Must not be taken for shipment by water	
Berries.—See Fruit.	
Bicycles.—See Vehicles.	
Billiard Tables and Fittings, K.D., boxed, O.R.....	1
“ not boxed. NOT TAKEN.	
Binders' Boards, O. R.....	3.....5
Bird Cages, in boxes, O.R.....	D 1
“ O.R., tops taken off and tops and bottoms nested, boxed.....	1
Birds, Stuffed.—See Stuffed Birds, etc.	
Biscuits, in boxes or barrels.....	2.....4
Bi-Sulphide of Lime, in bbls. or lhdts.....	3.....5
Bitters.—Same as Liquors.	
Blacking.....	2.....4
Blacking, Curriers', or liquid, in wood.....	3.....5
Black Lead.....	2.....4
Blankets, in bales, O.R. chafing.....	1
Bleaching Salts.....	4.....5
Blinds, Wooden.—See Joiners' Work.	
Block Shells.....	3.....5
Blocks, Butchers'.....	3
“ Pulley or Tackle.....	3.....5
Blowers, Iron Rotary.....	2
Blue Stone or Vitriol, in kegs or boxes.....	2.....5
“ in bbls. or casks.....	3.....5
Bluing, Liquid, Cake or Ball.....	1
Boats, Racing.—Taken by special contract only.	
“ Steam Yachts or Launches, O.R. Released, 30 feet long or under, requiring a flat car for carriage. See rule 6	

B.--Continued.

L.C.L. C.L.

Boats, Canoes, 20 feet and under, estimated weight 700 lbs. each, O.R., released...	1
" Canoes, nested and crated, (minimum for any one consignment 700 lbs. at first class).....	1½
" Skiffs and Pleasure Boats, 15 feet and under, estimated weight 800 lbs. each, O.R., released.....	1
" Skiffs, nested—Same as Canoes nested.	
" 20 feet and under, estimated weight 1,200 lbs. each, O.R., released.....	1
" over 20 feet, in box cars, estimated weight 2,000 lbs. each, O.R., released..	1
" over 30 feet long. Taken by special contract only.	
" or Sleds, for hauling stone or clay	3.....6
" Lumbermen's, and Batteaux, under 30 feet, in box cars, one boat 4,000 lbs., each additional boat in same car 2,000 lbs., O.R., released	1
" Lumbermen's, and Batteaux, in box cars, C.L. 20,000 lbs., O.R., released.....	.. 10
" of all kinds (except lumbermen's, etc.), in box cars, C.L. 20,000 lbs., O.R. released6
" of all kinds, requiring a platform car for carriage. See rule 6.	
Bobbins.—Same as Spools.	
Boilers (and fixtures, shipped together), loaded and unloaded by owners	1.....6
" over 28 feet long. Taken by special contract only.	
Boilers requiring a platform car for carriage (whether full capacity of car be occupied or otherwise). See rule 6.	
" Range, copper, O.R.....	2.....4
" " iron, O.R.....	3.....5
Boiler Compound, in kegs or barrels	3.....5
Boiler Flues or Tubes. Same as Iron Pipe.	
Boiler Plates.—See Iron.	
Bolster Plates.—See Iron.	
Bolsters—Feather, Hair, etc.....	D 1
Bone Black	3.....5
Bone Dust, in barrels or casks	3.....5
Bones, in sacks or casks, less than 10,000 lbs....	3
" " 10,000 lbs. and over ...	4
" in sacks, casks or bulk, C.L.....10
Bonnets.—See Millinery.	
Books, in boxes or cases	1
Boots and Shoes, in trunks, O.R.....	1½
" " in cases,	1
Boot Crimps.....	1
Boralumino	3.....5
Borax	3
Bottles.—See Glassware.	
Bottle Wrappers—Paper, straw or wood, in bundles or boxes.....	2.....5
Bows.—See Carriage Goods.	
Boxes, Wooden, Empty, prepaid.....	D 1
" nested, or with inside divisions for bottles. 1	
" " " C.L. 20,000 lbs.....10
" Egg Cases and Carriers.....	D 1
" " with wood or pasteboard compartments for each egg, (C.L., minimum 20,000 lbs).....	1.....10

Boxes, Butter, Cheese, Grease, Fig, Spice or Bail, in crates, boxes or cases.....	1
" Paper, Empty, not boxed, O.R.....	4-1.....5
" " " boxed.....	3-1.....5
" " " nested and crated, O.R.D 1.....	5
" " " nested and boxed, O.R..D1.....	5
" " K D. flat, boxed, O.R.....	2.....5
" " or Pails, for oysters, candy, etc., nested, in bundles, O R.....	3-1.....5
" " or Pails, nested, crated or boxed. D1.....	5
" Cigar, empty, crated.....	D1
" " boxed.....	1
Box Stuff, in bundles or shooks.....	4.....10
Brackets.—See Furniture.	
Bran and Shorts, in boxes and paper sacks, O R. released.....	5.....8
" " in bags or barrels, estimated weight 200 lbs. per bbl.....	5.....8
Bran and Shorts, C.L.—Same rule as to Min- imum C.L. weight as for Flour and Meal, except in cases where car can- not contain 30,000 lbs., in which case actual weight will be charged, but not less than 24,000 lbs.	
Brandy.—See Liquors.	
Brass Bedsteads, K.D. in bbls.....	1
" Car Brasses or Bearings.....	2.....5
" manufactured, not otherwise specified ..	1.....4
" in Sheets, Rolls, Rivets or Tubing...	2.....4
" Pipe Fittings and Valves, in boxes, kegs or bbls.....	2.....4
" Scrap.....	3.....6
Bread, prepaid, O.R.....	1
Brewers' Finings (liquid), in casks or bbls...	2.....4
Bricks, Common.....	4.....10
" Fire.....	3.....7
" Terra Cotta fire-proofing.....	4.....10
" for stove lining, loose, O.R.....	1.....7
" " " in boxes or barrels, O.R.....	3.....7
Brimstone.—Same as Sulphur.	
Bristles, in packages.....	1
Britannia Ware, boxed.....	1
Bromide of Ammonia, in boxes or barrels.....	2.....4
" " Potash, " ".....	2.....4
" " Soda, " ".....	2.....4
Bromide, in iron drums.....	3.....4
Bromine, in glass, packed in wood.....	1
Brooms, in bales, bundles or racks.....	1
" boxed, handles detached.....	2.....5
" C.L., in common cars 34 feet long and under; minimum, 14,000 lbs.....	4
" in furniture cars; minimum, 20,000 lbs.	4
Broom Corn, pressed, in bales, O.R.....	1.....5
" Handles.—See Handles.	
" Racks, wooden.....	1.....6
Bronze or Metal Ornaments, O.R.....	1.....4
" " " Crated or boxed, O.R.....	2.....5
Bronze Powder, in cases.....	1
Bronzeware, in boxes or cases.....	1
Brush Backs, Wooden, in boxes.....	3.....5
Brushes, in boxes.....	2.....4
Buckets, Iron.—See Iron.	
" " " Wooden.—See Woodenware.	
Buckwheat.—See Grain.	
Buckwheat Meal.—See Flour and Meal.	

B.—Continued. C.

L.C.L. C.L.

Buffalo Robes, in bales, O.R.	1.....3
Buggies.—See Vehicles.	
Bulbs and Roots, in packages, prepaid, O. R.	1
Bungs, Wooden, in bags	2.....4
Bungs, Wooden, in boxes or barrels	3.....4
Burial Cases, Wooden or Metallic, O.R. released.	1.....4
" " C.L. Same minimum weights as Furniture.	
Burlaps	3.....5
Burr Stones or Blocks	3.....5
Butter, in crocks, jars, baskets or pails, O.R.	1.....3
" in tubs, firkins, kegs, boxes or barrels, O.R.	2.....3
" in crocks or jars, not taken unless packed in boxes or bbls.	
Butter Tubs and Firkins	1
" " nested, covers in bbls.	2
Butter Tubs and Firkins—common cars 34 feet long or under; minimum, 14,000 lbs. per car4
Furniture cars, or racked platform cars; minimum, 20,000 lbs. per car.4
Butter-Workers, set up.	1½
Buttons, in cases or boxes.	1

-C-

Cabbage.—See Vegetables.	
Cables, Chain.—See Chain.	
Calamine, in packages	3
Caloric Engines	1
Camphene, in wood only, O.R.	1
This Freight must not be taken for shipment by water except by special contract.	
Camphor Gum	1
Canada Plate	3.....5
Candied Peel in cases, under 30 lbs. each	1
" 30 lbs. each or over.	2.....5
Candles, Tallow	3.....5
Wax and Paraffine	3.....5
Canes, Walking, in bundles	D 1
" in boxes	1
Cane Splints, in bundles.	1
Canned Goods—Fish, Vegetables, Berries, Fruit, and Potted Meats.	3.....5
Cannon and Cannon Balls. Taken by special contract only.	
Cant Hooks and Peaveys	2
Canyas, in rolls	1
" in bales	2
Capstans	2
Carbon Points.—See Electric Light Carbons, page 19.	
Carboys, empty, O.R.	1.....6
Car Brasses.—See Brass.	
Cardboard, in cases.	2
Cards, in cases.—Same as Stationery.	
Carpenters' Tools, in chests	1
Carpets and Carpeting, in bales, O.R. of chafing	1.....3
Carpet Lining and Stair Pads.	1.....3
Sweepers, loose, O.R.	D 1
" boxed	1
Carriages.—See Vehicles.	

C.—Continued.

L.C.L. C.L.

Carriage Goods, as follows.—	
Axles—Iron, cased with wood, finished.....	1
Axle Beds, Reaches, Spring Bars, Cutter Knees, Shaft Bars and Bob Runners, in the rough	3
Bows, in bundles	1
Carriage Stuff, not otherwise specified.....	2
Hubs	3
Hub-Blocks	4
Rims or Fellocs	3
Running Gear, wheels off	1
Shafts, unfinished in bds., Tongues and Poles.	3
Shafts, Tongues and Poles—finished, O.R., chafing	1
Spokes, in bundles	3
Thills, Finished.....	D 1
“ Unfinished, in bundles	3
Thimble Skeins.—See Iron.	
Wheels, Finished, without tires.....	1½
“ Finished, with tires.....	1
“ Unfinished, in white, without tires ..	1
“ Unfinished, in white, with tires	2
Whiffletrees, Unfinished, in bundles.....	3
“ finished, O.R., chafing.....	1
Carriage Goods and Bent Stuff (except Hub Blocks)	6
Cars, Railway, on own wheels, O.R. released:—	
Sleeping Cars	each, 15c. per mile
Passenger Cars	“ 12c. “
Mail, Baggage or Express Cars. “	10c. “
Freight Box, Vans or Auxiliary Cars	“ 8c. “
Platform and Coal Cars	“ 6c. “
4-Wheel Box, Platform or Coal Cars	“ 5c. “
Minimum charge \$6.00.	
Railway cars requiring transportation on other cars, taken by special contract only.	
Cars, Railway, on own wheels—One man will be passed free in charge of each shipment of passenger cars on their own wheels. No return passes to be given.	
Cars, Street, 1-Horse, estimated weight 6,000 lbs.	1.....4
“ 2-Horse, “ 8,000 lbs.	1.....4
“ Street—Horse, Electric or Cable, requir- ing a flat car for transportation. Rule No 6 to apply.	
Cars, Hand, Push or Logging set up.....	1.....6
“ K.D.....	3.....6
Car Pushers	3
Car Springs, Rubber, Spiral or Elliptic.....	3.....5
Car Wheels and Axles	4.....7
Cartridge Shells, paper or metallic, empty	1.....3
Cartridges, Paper or Metallic (when authorized to be taken), closely and securely boxed	1.....3
Carts.—See Vehicles.	
Cash Registers—boxed, O.R. Released.....	1
Cassia, in bales or boxes.....	1
Castor Oil, in tin or glass, boxed.....	1.....4
Castor Oil, in casks, O.R. of leakage	2.....4
Catsup, in glass, boxed, O.R.	1
“ in kegs or casks, O.R.	3.....5
“ in tins, boxed	3.....5
Cattle Food, Patent or Concentrated, in boxes, barrels or bags	3.....5
Cattle Food, Chopped Straw, Hay, Versilage, and similar common Cattle Food ..	4.....8

C.—Continued.

L.C.L. C.L.

Cattle Tails.....	2
Caviare (Fish Eggs) in kegs or barrels.....	1.....2
Cedar Posts and Ties. Taken by special contract only.	
Celluloid, in bundles.....	1.....5
" in boxes.....	2.....5
Goods, in boxes.....	1
Cement, in sacks or barrels.....	4.....10
Cereals, not otherwise specified, rolled, pressed, cracked, dried or desiccated, in boxes.....	3.....5
" Same in bags or barrels.....	4.....5
Chain, other than Cable, loose.....	2.....4
" " in boxes or barrels.....	3.....5
" Cable, half inch and over.....	3.....4
Chalk, in boxes.....	2
" in barrels or casks.....	4
Chandeliers. See "Gas Fixtures."	
Charcoal, in sacks or barrels.....	2
Charcoal, C.L., minimum 20,000 lbs. per car.....	7
Cheese, in crocks or jars, packed in cases, O.R.....	2.....4
" in boxes or casks, O. R. from weather..	3.....4
Cheese Presses.—See Machinery.	
Cheese Safes, loose or in bundles.....	4-1
" " crated.....	3-1
" " boxed.....	D 1
Cheese Setters.....	1
Cheese or Cream Vats, set up.....	D 1
Cheese or Cream Vats—legs and detachable parts taken off and crated.....	1
Cheese or Cream Vats, requiring a platform car for carriage (whether full capacity of car be occupied or otherwise). See rule 6.	
Cheese Box Stock.....	4.....10
Chicken Coops, prepaid.....	D 1
Chicory, in cases.....	2.....5
" in bags or barrels.....	3.....5
Children's Carriages, Sleds, etc.—See Vehicles.	
Chimney Pots, Zinc.....	D 1
" Earthenware.....	2.....4
Chinaware, in boxes, barrels or casks O.R. B.....	1.....4
" in crates or hhds, O.R. B.....	2.....4
Chlorate of Potash, in kegs.....	3.....5
Chloride of Lime, in boxes.....	3.....5
" in casks or barrels.....	4.....5
Chloride of Calcium, in boxes or barrels.....	1
" in drums.....	3
Chocolate, in boxes.....	1.....3
Churns, loose.....	D 1
" boxed or racked.....	1
" loose, barrel, fixtures detached and bundled.....	1
Churns—loose, boxed or racked, common cars 34 feet long or under; minimum, 14,000 lbs. per car.....	4
Furniture cars, or racked platform cars; minimum, 20,000 lbs. per car.....	4
Cider. Same rates and conditions as Ale.	
Cider Mills and Presses.—See Machinery.	
Cigars and Cigarettes, in cases, securely strapped 1½ not strapped...D 1	
Cinnamon.—See Spices.	
Cisterns, Wooden, set up.....	D 1
" " K.D.....	3.....5
" " requiring a platform car for carriage (whether full capacity of car be occupied or otherwise). See rule 6.	

Clams.—See Oysters.	
Clay, Fire Pottery, etc.	4.....7
Clay Birds or Balls.—See Balls.	
Clocks and Weights, boxed, O.R.	1
Clothes Lines.—See Cordage.	
Clothes Frames or Horses	1
Clothes Pins, less than 50 boxes	2
" " 50 boxes and over	3.....5
Clothes Wringers and Washers, not boxed	1½
" " boxed or crated	2
Clothing (not personal effects) in trunks.....D	1
" " boxed.....D	1
Clover Seed.—See Seed.	
Cloves.—See Spices.	
Coal, Mineral, and Coke.....	4.....10
Coal Facings	4.....7
Coal Hods or Scuttles, O.R.	1
Coal Oil.—See Oils.	
Cocoa, in boxes	1.....3
Cocoanuts, in bags	1.....4
" in boxes, barrels or casks	2.....4
" (dessicated), in pails or in glass	
boxed, O.R.B.	1
" " in boxes or barrels	3.....4
Cocoa Matting.—See Matting.	
Coffee, Essence or Extract, in cases	1
" roasted, ground or unground, in sacks,	
boxes, barrels, or tins crated	3.....5
" in tins, not crated or boxed, O.R.	1
green, in sacks or barrels	4.....5
Coffee Mills	1
Coffins.—See Burial Cases.	
Cogs, wooden, in boxes or barrels	3
Combs in cases	1
Concentrated Lye	2
Confectionery, O.R.	1.....4
Contractor's Plant, consisting of vehicles, der-	
ricks, tools and dredges	1.....6
Coopers' Flags	1
Copperas, in boxes or kegs	2.....5
in bbls. or casks	3.....5
Copperine	3.....5
Copper Stills and Worms	D 1
" Bottoms, Bolts, Nails, Sheets, Rod, Wire	
and Ingots	2.....4
" Vessels, very large. Taken by special	
contract only.	
" Scrap and Pig	3.....6
" Ore	4.....10
" Oxide	3
" Manufactured, not otherwise specified.	1
Copying Presses	1
Cordwood. Taken by special contract only.	
Cordage, Rope and Rigging	3.....5
" Clothes Lines	3.....5
" Small Cord and Twine	2.....4
" Binding Cord for Harvesters, in bales	
or boxes	3.....5
" Lath Yarn	3.....5
Corks and Corkwood	3.....5
Cork, ground, compressed in packages	1.....4
Cornices, Metallic, in frame or open box	3-1
" K.D., well boxed	1
Cornices, Wooden	1.....6
Cornice Poles, in bundles or cases	1
Corn.—See Grain.	

C.—Continued. D.

L.C.L. C.L.

7	Corn Cakes, in cases	1
	Corn Meal. Same as Flour and Meal.	
	Corn, Pop Corn	2
	" Sweet, dried	1
5	" parched or popped	2
	Corn Cobs, C.L. 20,000 lbs.	10
	Corn Husks. Same as Husks.	
	Corn Poppers.—See Hardware.	
	Corsets, in cases	1
	Cotton, not pressed, in bags or sacks, O.R. of fire.	4
	" raw, pressed in bales, O.R. of fire	5
	" raw, in cans, crated or boxed	5
10	Cottons, Domestic.—See Dry Goods.	
7	Cotton Goods.—See Dry Goods.	
	Cotton Seed Meal	8
	Cotton Waste, in bags or sacks, not pressed,	
3	" O.R. of fire	5
4	" in bales, machine pressed, O.R.	5
	of fire	5
	Crackers, in boxes or bbls.	4
	Cracklings	4
	Cranberries.—See Fruits.	7
4	Creamers, set up	D 1
	" K.D. and boxed	6
	Cricket Bats, Wickets, etc., in boxes	1
5	Crowbars.—See Hardware.	
	Crayons, in boxes or barrels, O.R.	1
5	Cream Tartar	1
	Crockery and Stoneware, in boxes, barrels or	
	" casks, O.R.	5
	" in crates or hhds.,	
	O.R.	5
	Cross Arms.—See Telegraph Supplies.	
4	Croquet Sets	1
	Crucibles, O.R.	1
6	Crucibles, in boxes or casks	3
	Cultivator Teeth, in bundles	4
5	" in boxes or casks	4
5	Curling Stones, O.R.	1
5	Currants.—See Fruit.	
	Curtain Fixtures, boxed or crated	1
	" Poles in bundles, wrapped	4
	" boxed or crated	4
4	" Rollers and Slats, in bundles or boxes	2
	Cushions, Carriage or Sleigh, boxed	D 1
6	These articles must not be receipted for as	
10	part of any vehicle forwarded by railway.	
	Cutch	5
	Cutlery.—See Hardware.	

—D—

5	Dates.—See Fruits.	
5	Deck, Vault or Floor Lights.—See Glass.	
4	Deer, in carcass, O.R.	D 1
	Dental Goods	1
5	Demijohns, Empty, O.R.	D 1
	in casks or cases, O.R.	4
	Derricks, too large to go into an ordinary box	
	car, and necessitating a platform car	
	for carriage. See rule 6.	
6	" Small, in box cars	2
	Desks.—See Furniture.	
	Detonators.—Same as Gunpowder.	

D.—Continued. E.

L.C.L. C.L.

Dextrine, in bags, boxes or casks.....	3.....5
Dirt Scrapers, hand.....	1
Dowel Rods or Pins.....	3.....6
Dressed Hogs, O.R. of weather.....	3.....5
Drugs and Medicines, not otherwise specified, in boxes, barrels or casks.....	1
Drums, in cases.....	4-1
Dry Goods, as follows:—Any or the following named articles, made wholly of cotton, when specific name of articles and name of shipper are plainly marked on outside of packages and stated on shipping bill and receipt—(marking or describing pack- ages as containing cotton piece goods will not be sufficient)—viz., Domestic Cottons, white or unbleached; Calicoes or Prints; Canton or Cotton Flannels, plain or dyed (not figured); Canvas; Corset Jeans; Cot- tonades; Cotton Warp; Cotton Yarn; Crash (Linen or Cotton); Domestic Checks, Stripes and Cheviots; Cotton Duck; Damasks; Denims; Drills; Do- mestic Ginghams; Glazed Cambrics; Osnaburgs; Sheetings (bleached or brown); Silkies; Tickings; Window Hollands and Shade Cloth (plain, uncut and un- decorated); in bales at O. R. or in boxes	2.....4
All Dry Goods, except articles above named, will be classed as "Dry Goods not otherwise specified," and the articles named will also be classed as "Dry Goods N. O. S.," unless the above condi- tions are complied with. Any package containing articles of more than one class will be charged the rate for the highest elassed article contained therein.	
Dry Goods, in trunks, O.R.....	D 1
“ in bales, not otherwise specified, O.R. of chafing.....	1
“ in boxes, not otherwise specified....	1
Dualine. NOT TAKEN.....	
Duck, in bales.....	2
Dumb-Bells, in boxes.....	3
Dye Stuff, not otherwise specified.....	1
“ in sticks or bundles.....	2.....4
“ in boxes, barrels or bags.....	3.....5
Dye, liquid, in boxes or barrels, O.R.....	1.....4
Dynamite. NOT TAKEN.....	
Dynamos, boxed, O.R.....	1.....4

—E—

Earth Closets, loose.....	14
" racked.....	1
Earthenware, in boxes, barrels or casks, O.R.....	2.....5
" in crates or hhds, O.R.....	3.....5
" Loose, O.R., taken in C.L. only; loaded and unloaded by owners.....	6
" Drain or Sewer Pipe.....	4.....10
Eavetroughs, Metallic, loose.....	3-1.....6
" " nested, in bbls.....	D 1.....5
" " crated or boxed.....	2.....5
" Wooden.....	2.....7
Edge Tools.—See Hardware.....	

'E.—Continued. F.

L.C.L. C.L.

Eggs, in baskets or pails, O.R.	D 1
“ in boxes or barrels, O.R.	2.....4
“ in patent carriers, O.R.	2.....4
Egg Cases and Carriers.—See Boxes, empty.	
Egg Carrier Fillings—Strawhoard or wood, K.D. flat, in cases	2.....5
Egg Fillers, Paper—See Paper.	
Elbows, corrugated.—See Stove Pipe.	
Electric Light Carbons, boxed	2.....4
Electrical Insulating Conduits, tarred felt or paper, in bundles, crates or boxes, O.R.	1.....3
Electric Instruments and Fixtures, boxed, O.R.	1.....3
Electric Light Bulbs (glass), in pkgs., O.R.	3-1.....3
“ “ Globes (glass), in pkgs., O.R.	D1.....3
“ “ Hoods, iron, nested, in pkgs.	2.....4
Electric Meters, boxed, O.R.	1.....3
Electric Motors, O.R.	1.....4
Electric Motor Trucks.—Same as Car Trucks.	
Electric Storage Batteries, O.R.	1.....3
Electrotype Plates, boxed, O.R., released	1.....4
Elevator Buckets in bundles, O.R.	2.....4
“ Tin or Iron, crated or boxed.	2.....4
Elevators, for buildings	1.....6
Emery, in cases	2.....4
“ Wheels, boxed	2.....4
Emigrants' Movables.—See Household Goods.	
Empties, not otherwise specified, prepaid	D 1
“ “ “ ppd., C.L., 20,000lbs.	... 10
“ returned from original consignee to original shipper, and by the Road originally shipped, every package to be fully marked or addressed, any quantity, prepaid	4
“ not fully marked or addressed. NOT TAKEN.	
Engines, Locomotive and Tenders on their own wheels, actual weight—Shippers must declare weight—O.R. released6
Locomotive Engines must be accompanied by a person fully competent to take charge of and travel with them, who will be passed free under the same conditions and regula- tions as in case of man travelling in charge of live stock.	
Engines, Portable or Stationary—See Machinery.	
Engravings.—See Pictures.	
Epsom or Glauber Salts.—See Salts.	
Essences and Extracts, in packages, not other- wise specified	1
Evaporators—See Iron.	
Excelsior, in bales	2..... 5
This Freight must not be taken for shipment by water.	

—F—

Faney Goods, not otherwise specified, in trunks,	
“ “ O.R., released	D 1
“ “ not otherwise specified, in cases.	1
Fans, Palm Leaf, in cases	1
Farina, not otherwise specified, rolled, pressed cracked, dried or dessicated, in boxes	3.....5
“ Samo in bags or barrels	4.....5

Faucets, Wooden, in barrels or boxes	2
Feathers, in boxes	4-1
“ in sacks	D 1
“ in compressed bales, iron-bound (minimum C.L. 12,000 lbs.)	1.....2
Feather Dusters, in boxes	D 1
Feed Steamers and Evaporators, O. R.	D 1
Feldspar	3.....6
Felt Clippings, in boxes, barrels or bags	3.....5
“ for underlying carpet	3.....5
“ for roofing	4.....5
“ boiler and pipe covering	2.....4
“ for Saddlery purposes	2.....4
Fence Posts and Rails. Taken by special con- tract only.	
Fenders and Fire Irons, in boxes	2
Fertilizers, in bags or barrels	4.....10
Figs.—See Fruit.	
Files.—See Hardware.	
Filters, O.R.	1
Findings, Shoe and Leather, in cases	1
Fire Arms, in boxes (not Government property)	1
Fire Crackers and Fire Works, securely boxed, and marked to show contents, O. R.	D 1
Fire Engines, Hand-brake, estimated weight 4,000 lbs., O.R.	1.....6
“ “ Steam, in box ears, actual weight	1.....6
Fire Extinguishers, Chemical, set up	D 1
“ “ “ in boxes, O.R.	1
“ “ “ 2 wheel, estimated weight 2,000 lbs., O. R.	1.....6
“ “ “ Chemical, 4 wheel, estimated weight 6,000 lbs., O. R.	1.....6
“ “ “ Hand Grenades, boxed	3.....5
Fire Kindlers, Composition	1
“ “ Wood, boxed	3.....6
Fish, Fresh or Frozen, in packages or fish safes on wheels, prepaid or guaranteed, O.R.	1
“ Fresh, in packages or frozen in bulk, pre- paid or guaranteed, O.R.4
“ in fish safes on wheels, prepaid or guaran- teed, O.R.6
“ Fish in bulk or in fish safes on wheels to be loaded and unloaded by owners.	
“ Salted, Dried or Smoked, in hampers, O.R.	1.....4
“ Salted, Dried or Smoked, in bundles, boxes or barrels, O.R.	3.....5
“ Pickled, in pails, casks or barrels	4.....5
“ Canned.—See Canned Goods.	
Fishing Nets, in bales, O. R. of chafing	1
“ “ in boxes	1
“ “ Rods, in bundles or cases	D 1
Flag Poles in box cars	1
Flax, in boxes, O.R.	2
“ in bales, O.R.	3.....5
“ Straw, in bales	3.....7
Flax Seed.—See Seeds.	
Flax Seed Meal, in bags or barrels	4.....8
Flocks, in sacks or boxes, O.R.	1
“ “ Hard Pressed, in bales	3.....5
Florida Water, in boxes, barrels or casks	1
Flour and Meal, in boxes and paper sacks, O.R. released	5.....8
“ “ in bags or barrels, estimated weight 200 lbs. per bbl.	5.....8

F.—Continued.

L.C.L. C.L.

Flour and Meal, mixed, in paper sacks, O. R. sifting, bags or bbls	8
Flour in sacks should be charged actual gross weight—the following are considered actual weights: half bbl. sacks 98 lbs., quarter bbl. sacks 49 lbs., eighth bbl. sacks 24½ lbs.	
Flour and Meal.—Minimum C.L. weight will be 30,000 lbs. per car, unless marked capacity of car be less, in which case the marked capacity, but not less than 24,000 lbs., will be the minimum.	
Fluid Beef.—Same as Food Prepared, etc.	
Fluor Spar, in packages	3.....6
Fluters.—See Hardware.	
Fly Traps, in boxes.....D	1
“ nested and boxed.....	1
Food, prepared for children and invalids, in glass, packed, O.R.....	1
“ prepared for children and invalids, in tin, packed.....	2
Foots	4.....5
Forges, Portable, O.R.....	2
Forks, Hay and Manure, in bundles, O.R.....	2.....5
“ Wooden, in bundles. O.R.....	1.....5
Foundry Facings—Same as Coal Facings.	
Fountains and Fixtures, Soda, boxed, O.R.....D	1
Fowls.—See Poultry.	
Frames, Picture or Looking Glass, in bundles, O.R.....D	1
Frames, Picture or Looking Glass, in crates, O.R.	1½
“ “ “ in boxes	1
Freezers, Ice Cream	1½
Fruits:—	
Apple Cores or Parings, in boxes or barrels ..	4.....7
Apple or Fruit Butter or Sauce, in glass or stone, O.R.....	1.....4
Apple or Fruit Butter or Sauce, in cans or wood, O.R.....	2.....4
Apples, Evaporated or Dried, in bags.....	1.....4
“ “ in boxes or bar- rels.....	3.....5
“ Green, only carried at owner's risk of freezing; must be prepaid and releas- ed between the 1st of November and 30th April, as follows:	
“ in bags or boxes	1
“ In bbls., to be taken at actual weight, but not less than 150 lbs. per bbl..	3.....5
“ in bulk.....8
Cranberries, prepaid, O.R.....	2.....4
Oranges and Lemons, in packages, O.R.....	1.....3
Must be prepaid and released between the 1st of November and 30th April.	
Fruit, Fresh, in baskets, O.R. prepaid	1.....3
“ “ in boxes or bbls., O.R. prepaid.....	1.....3
“ “ not otherwise specified, prepaid, O.R. Released.....	1.....3
“ Mixed Cars Fresh Fruits, including Apples3
“ Dried:—Dates, Figs, Raisins, Currants, Prunes, Berries, Apricots, Peaches, in mats, cases, boxes, kegs or bbls.....	2.....4
“ in bags or mats, not otherwise specified..	1
“ Canned.—See Canned Goods.	
“ Preserved, not otherwise specified.....	1
“ Grapes, pressed in barrels, for wine mak- ing purposes.....	3.....5

Fruit, Brined.—Same as Pickles.	
Fruit Driers, Galvanized Iron	D 1
Fuller's Earth, in cases	2
Furnaces and Furnace Castings.—See Stoves.	
Furniture. In less than carloads, O. It., RE- LEASED IN EACH CASE, as follows:	
Bamboo, set up	4-1
“ set up, boxed or crated	3-1
“ K.D. flat, boxed or crated	D 1
Bed, Sofa, or Chair Springs, in bundles	D 1
“ “ “ “ in boxes or bbls.	1
“ “ “ “ nested, in covered bundles	1
Bedsteads, Wooden, common, set up	4-1
“ (common), finished, K.D.	2
“ “ in white, K.D. and bundled	3
“ extra valuable, carved or elabor- ately finished, wrapped or crated	D 1
“ (iron), set up	D 1
“ K.D.	1
Bedslats in bbls.	2
“ crated or boxed	3
Bookcases, set up	1½
“ K.D., flat	2½
Brackets, Wood, boxed	1
Bureaus, Wardrobes, Washstands, Dressing Cases, Desks, Sideboards, wrapped or crated	1½
Bureau Glass Frames, K.D. in bundles	1
“ K.D. and closely boxed	2
Camping Tables and Ironing Stands (combined) K.D. and tied together	1
Centre Tables, K.D., legs off	1
Chairs, set up and closely boxed	1
“ crated or canvassed	D 1
“ Wood Seat, common, set up	D 1
“ Wood Seat, folded flat and bundled	1
“ Common wood seat, completely K.D. and bundled	2
“ Wood or Cane Seat, in bundles of four or more—partly K.D.	D 1
“ Cane, Reed, Splint, Slat and Perforated Wood, and Hair Seat, K.D., bundled or boxed	1
“ Cane, Reed, Splint, Slat and Perforated Wood Seat, set up	3-1
“ Willow or Rattan	4-1
“ Camp, in bundles	1½
“ Folding	D 1
“ and Step Ladders (combined), wood seat	1
“ and Step Ladders, (combined) set up	D 1
“ and Step Ladders (combined), K.D. in bundles	1
“ Stuffed Parlor Furniture, Tete-a-tetes, and Sofa Lounges, set up	D 1
“ Dentists', Barbers' or Reclining	D 1
“ Large Rocking, set up, rockers on or off	3-1
“ Iron Opera (folding), crated or boxed	2.....4
“ Children's, set up	3-1
Chairs with Seats off, Frames and Legs on. Same as Chairs.	
Chair or Lounge Frames in white, not uphol- stered	1½
“ or Lounge Frames, in white, legs and backs off, K.D.	1

Furniture—Continued :—	
Chair Seats, perforated, crated or boxed.....	1
Cheffoniers, Hat Racks, Hall Stands. Same as Bureaus, etc.	
Church Furniture—Pew Ends, Pew Backs, Pew Seats, Chancel Rails, Altars, K.D., crated or boxed.....	2
Pulpits, set up, crated or boxed, in box cars	1
Pulpits, K.D. crated or boxed.....	2
Common, in White or in rough, set up.....	D 1
“ “ K.D. and closely boxed..	2
Cradles, Children's, Wood or Wicker Work..	3-1
“ “ Iron.....	1½
Desks, Office	1½
Folding Beds or Cots, folded	1
Folding Bedsteads—folded.—Same as Dress- ing Cases.	
Hat Racks.—Same as Bureaus.	
“ “ K.D., crated or boxed	1
Hat Racks or Hall Stands in pairs, nested together and crated.....	1
Marble Slabs for Furniture, boxed or crated..	1
Mattresses, Wire, K. D., and securely boxed..	3.....5
“ “ Wire, Hair, etc., set up	D 1
“ “ Wire, rolled, in bundles or bales.	1
“ “ Hair. Sea-grass, etc., in bales, canvassed	1½
Night Commodes	1
Rattan, in bundles.....	1
Reed Goods.—Same as Rattan Goods.	
School Furniture, not otherwise specified, K.D. and packed	2
“ “ set up.....	1
“ “ Desks, set up	1½
“ “ and Seats combined, set up.....	1½
“ “ seats, folded ..	1
“ “ “ K. D., crated or boxed.....	2
Side Board and Wash Stand Backs, crated or boxed.....	2
Sofas or Lounges, wrapped or crated.....	D 1
Spring Beds, set up.....	D 1
“ “ folded or rolled in bundles.....	1
Spring Bed Frames.....	D 1
Tables (Extension), common	1½
Tables, Extension, K.D., legs off.....	1
Willow or Rattan.....	4-1
Furniture and Chair Stock, in rough.....	3.....6
Furniture, not otherwise specified, set up, wrapped or crated	D 1
“ “ not otherwise specified, set up, and closely boxed	1
“ “ of all kinds, not otherwise speci- fied, O. K. released, in car loads, common cars 34 feet long and under, minimum 12,000 lbs.....	4
“ “ in furniture cars or racked plat- form cars, minimum 20,000 lbs.	4
Furs, in bales, not otherwise specified.....	D 1
“ “ in barrels or boxes.....	1
Fuse.....	1½
Fustic.—Same as Dye Woods.	

	L.C.L. C.L.	
Galvanized Iron Oil Cans.—Same as Tin Oil Cans.		
Gambier.....	3	5
Gamboge, in cases.....	1	
Game, in boxes or barrels, prepaid, O.R.....	1	
Game Traps.....	1	
Garden Seats, Rustic.....	1	
Iron.....	2	
Gas, Dental, in Cylinders, O.R.L.....	2	
Gas Cylinders, Dental, empty.....	2	
Iron or Steel, for passenger cars.....	2	4
Gas, Oxygen, in iron or steel tubes or cylinders.....	2	
Gas Machines or Generators, O.R.....	D 1	
requiring a platform car for carriage (whether full capacity of car be occupied or otherwise). See rule 6.		
Gas Fixtures and Chandeliers, glass, in boxes, bbls. or casks, O.R.....	D 1	
Gas Fixtures and Chandeliers, metal, in boxes, bbls. or casks.....	1	
Gas Meters.....	D 1	
Gas Retorts.—See Retorts.		
Gasoline, in wood.....	D 1	3
Gasoline.—Must not be taken for shipment by water.		
Gelatine, in boxes.....	1	
Ginger, in cases.....	1	
Ginger Ale.—Same as Ale.		
Ginseng.....	1	
Glass, Plate, or Mirrors boxed, loaded in box cars.....	4-1	1
" Plate, for Mirrors, or Mirrors, in boxes not over five feet long or wide, at Owner's Risk, released on Special Plate Glass Release form.....	1	3
" Plate, or Mirrors, packages over 5 feet long or wide, in box cars, at Owner's Risk, shippers signing Special Plate Glass Release form.....	D 1	3
" Plate, or Mirrors, requiring the use of a Flat or Gondola Car for carriage—(Rules 3 and 6 not to apply). One case, minimum weight 12,000 lbs.....	D 1	
Two or more cases, minimum weight 20,000 lbs.....	D 1	
Same—when shipped at Owner's Risk, shippers signing Special Plate Glass Release form— One case, minimum weight 12,000 lbs.....	3	
Two or more cases, minimum weight 20,000 lbs.....	3	
Plate glass not in box cars to be loaded and unloaded by owners and at their expense.		
" Signs, O.R. released.....	D 1	
" Showcards, boxed, O.R. released.....	D 1	
" ribbed, stained, ground, enamelled, colored or embossed, boxed, O.R. released.....	1	4
" Common Window, under 80 united inches, boxed, O.R. released.....	3	5
" 80 united inches or over, O.R. released. United inches means the length and breadth of the package added together.	1	4
" Broken or Scrap, in packages.....	4	7
" Lights—Deck, Vault or Floor.....	3	5

G.—Continued.

L.C.L. C.L.

Glass Insulators, in barrels or boxes	3.....5
Glassware, Bottles—Ale, Beer, Porter, Soda, Mineral Water, Brandy, Wine, Bitters, Prescription Vials, Fruit Jars, in packages	3.....5
Globes or Bulbs, Electric Light, O.R. (minimum C.L. 16,000 lbs.).....D	1.....3
Globes, Gas or Lamp, O.R. (mini- mum C.L. 16,000 lbs.).....	1.....3
Globes, Lantern, O.R. (minimum C.L. 16,000 lbs.).....	1.....3
Globes, Street Lamp, O.R. (mini- mum, C.L. 16,000 lbs.).....D	1.....3
Lamp Chimneys in pkgs., O. R. breakage	2.....4
not otherwise specified, in boxes or casks, O.R.	1.....4
not otherwise specified, in crates....	2.....4
Gloves, Leather, Woollen or Cloth	1.....
Glucose, in packages	4.....5
Glue, dry, in boxes or barrels	2.....5
Glue, liquid, in glass or tins, packed in boxes or barrels	2.....5
Glue Stock or Scrap, in sacks or barrels	3.....5
“ “ in bulk.....	7.....
Glycerine, Refined, in glass or tin	1.....
“ Crude, in barrels or drums	2.....4
“ Nitro.—NOT TAKEN.	
Gold and Silver Foil, or Leaf, NOT TAKEN. (Should be shipped by Express.)	
Government Supplies. Taken by special con- tract only.	
Grain.—Same rule as to minimum C.L. weight as for Flour and Meal.	
Grain, as follows:—	
Barley, Pearl and Pot, in boxes.....	3.....5
“ “ in bags or bbls.....	4.....8
“ Common.....	4.....8
Beans, in boxes.....	3.....5
“ in bags or barrels	4.....8
Buckwheat.....	4.....8
Corn, Sweet, Pop, etc.—See Corn.	
“ Common.....	4.....8
Malt.....	4.....8
Oats.....	4.....8
Peas, Dried or Split, in boxes	3.....5
“ Dried or Split, in bags or bbls.	4.....8
“ Dried, Common.....	4.....8
Rye.....	4.....8
Wheat.....	4.....8
Mixed cars of Barley, Oats, Peas and Wheat, in bags or barrels.....	8.....
The general term “Grain” will not apply on Pot and Pearl Barley, Beans, Buckwheat or Split Peas on special “Grain” Tariffs, unless these articles are enumerated thereon as includ- ed in the Special Grain Rates.	
Granite Ware—Same as Agate Ware.	
Granite.—See Marble.	
Granolithic material and tools.—Same as Roofing material and tools.	
Grates and Grate Castings, O.R.—See Iron.	
Gravel.....	4.....10
Gravestones.—See Marble.	
Grease, in cans or buckets	3.....5
“ in boxes or barrels	4.....5

Grindstones, O.R.....	4.....7
" hand, set up.....	1.....4
" " boxed or crated.....	2.....4
Groceries, not otherwise specified.....	1
Guano.—Same as Fertilizers.....	
Gum, Copal, Deniar, Kowrie, Sandarac, Shellac, Chicle, Dextrine, in pkgs.....	2.....4
Gum, not otherwise specified, in packages.....	1
Gun Stocks and Barrels, in boxes.....	1
" in the rough, in boxes or bundles..	2
Gunny.....	3.....5
Guns.—See Fire Arms.....	
Gunpowder, common black, in fireproof maga- zines, metallic kegs; kegs or cans securely packed in cases; at Company's convenience D 1 Minimum charge, \$1.00.	
Gunpowder, common black, in lots of 10,000 lbs. or over.....	1
Gutta Percha and Gutta Percha Goods.....	1
Gypsum.....	4.....10

—H—

Hair, in sacks.....	1
" Curled or Rope, pressed in bales.....	2.....4
Hair, Plasterers', in sacks.....	1
" " in barrels.....	2
" " pressed in bales.....	3.....5
Hams.—See Meats.....	
Handles, Wood—Finished.....	3.....6
" Rough.....	4.....7
Hardware, in trunks.....	1
Hardware:—	
Bells, O. R.....	1
Cant-dogs, Clawbars, Crowbars.....	3.....5
Cutlery, Corn Poppers.....	1
Cutter Bars.....	3.....5
Drag Teeth, in packages.....	3.....5
Door Knobs.....	2.....4
Door Locks.....	2.....4
Files, in packages.....	2
Fluters.....	1
Forks, Hand, in bundles.....	2.....5
Hay Knives, in bundles.....	1
" in boxes.....	2
Hammers, Sledge.....	3
Harrow Teeth, in packages.....	3.....5
Hoes, in bundles.....	2.....5
Jacks, Hand, loose.....	2
" " boxed or crated.....	3
Pick-Axes, loose or in bundles.....	2
" " in boxes or casks.....	3
Plow Beams, Iron.....	3.....5
Plow Castings, Plow Points, Mouldboards, Shares and Wings in bundles	2.....5
" " in boxes or barrels.....	3.....5
Post Augers.....	2
Punches, Iron (Power).....	3
Rake Heads, Iron, in boxes.....	3
Rake Teeth, in packages.....	3.....5
Rakes, hand, iron or steel heads, in bundles..	2.....5
Reaper and Mower Knives.....	3.....5
Rings (Bull or Hog), in boxes.....	3
Sad Irons, in boxes or barrels.....	3.....5

Hardware—(Continued):—

Secoos, in bundles.....	2.....5
Screws, Bench, Iron, in boxes.....	3.....5
Screws, Iron or Steel, in boxes.....	3.....5
Screw and Strap Hinges.....	3.....5
Scythes, in bundles.....	1.....5
“ in boxes.....	2.....5
Seythe Snaths, in bundles.....	1.....5
Shot, in bags.....	1.....5
“ in boxes or kegs.....	3.....5
“ in small bags or packets, enclosed in gunnies, O.R.....	3.....5
Shovels and Spades, in bundles.....	2.....5
Skates, Ice or Roller, boxed.....	1.....
Staples, in boxes or kegs.....	3.....5
Tacks, in boxes or kegs.....	2.....5
T and Band Hinges, in bundles.....	3.....5
“ in boxes or barrels.....	3.....5
Wrenches, in packages.....	3.....
General Hardware, not otherwise specified..	2.....
Mixed cars of Forks, Hoes, Rakes, Seythes, Seythe-Snaths, Shovels, Spades and hand Farm Implements.....5
Harness.—See Saddlery.....	
Hats and Caps, in trunks.....	D 1.....
“ other than straw goods, in boxes.....	1.....
“ Straw, in boxes, bales or crates.....	1.....
Hay, in bales.....	3.....10
Cars under 34 ft., minimum 20,000 lbs.; cars 34 feet and over, minimum 24,000 lbs. (inside measurement to govern).	
Hay must not be taken for shipment by water unless specially authorized.	
Hay or Grass Caps—Strawboard or Wood Pulp	2.....5
Heading.—See Lumber.....	
Headlights, not boxed, O.R.....	D 1.....
“ boxed, O.R.....	1.....
Hemp, in boxes, O.R. of fire and water.....	2.....5
“ in bales.....	3.....5
“ Seed.—See Seed.....	
“ Machines.—See Machinery.....	
“ Powder.—NOT TAKEN.....	
“ Eggs.—See Fish.....	
“ Hens, in bales or rolls.....	3.....5
“ and Skins:—	
“ Dry, loose.....	1.....3
“ pressed in bales.....	3.....5
“ Green, loose.....	1.....3
“ Green, booked or bundled.....	3.....5
“ Salted or Pickled, in barrels.....	3.....5
Skins, Dry—Calf and Sheep, loose.....	1.....3
“ in bales.....	2.....4
“ “ Deer and Goat, loose.....	D 1.....
“ in bales.....	2.....4
“ Dry—Peltries (Fur), loose.....	D 1.....
“ in bales.....	1.....
“ Green, Calf and Sheep, and Sheep Pelts, loose.....	1.....
“ “ Calf and Sheep, and Sheep Pelts, pickled, in bales or bbls.....	2.....4
“ “ Salted or pickled, in bbls.....	3.....5
“ “ Deer and Goat, loose.....	1.....
“ in bales.....	2.....3
“ Green, Peltries (Fur), loose.....	D 1.....
“ in bales.....	1.....
Hide Cuttings.....	3.....5

High Wines.—See Liquors.	
Hinges.—See Hardware.	
Hobby Horses, set up.....	4-1
" " " and boxed.....	D 1
" " K.D. and boxed or crated.....	1
" " Shoo Fly Rockers, loose O.R.....	D 1
" " " Crated or boxed, O.R. 1	
Hogs, Dressed.—See Dressed Hogs.	
Hominy, not otherwise specified, rolled, pressed, cracked, dried or desiccated, in boxes.....	3.....5
" same in bags or barrels.....	4.....5
Honey, in boxes, kegs or cans.....	1.....4
" in barrels or casks.....	2.....4
Hoofs and Horns, in crates or bags, less than 10,000 lbs.....	3
" " " 10,000 lbs. and over.....	4.....10
Horn Tips or Ends in packages.....	4.....5
Hoops, Hop Poles, etc.—See Lumber.	
Hops, in bags or boxes.....	1.....3
" pressed in bales, actual weight.....	2.....3
Horse Nails.—See Nails.	
Horse-Powers.—See Machinery.	
Horse Shoes.—See Iron.	
Hose—Leather, Rubber or other.....	2.....4
Hose Reels—Lawn, set up.....	D 1
" K.D.....	1
Hot Water Reservoirs.....	2.....5
Household Goods, O.R. released, prepaid.....	1
" " Any shipment requiring a whole car for carriage, if 5,000 lbs. or under, to be charged 20,000 lbs.....	10
" " If over 5,000 lbs. and under 10,000 lbs., to be charged 20,000 lbs.....	7
" " 10,000 lbs. and over to be charged C.L.....	6
" " including Live Stock (not over 10 head per car), to be charged C.L.....	6
When a car contains Horses, Mules or Cattle, one man in charge will be carried free (on same conditions as for Live Stock), but no free return pass will be given.	
House Movers' Material.....	6
Houses, Portable.....	7
Hubs.—See Carriage Goods.	
Husks and Hulls, in bags.....	1.....10
" " " in boxes, barrels or bales.....	2.....10
" " " (C.L. minimum 20,000 lbs. per car.)	

—I—

Ice, L.C.L. in tin boxes or safes, or C.L. in bulk, O.R., prepaid.....	3.....10
Images and Figures (not statuary), Clay, Earthenware, Plaster of Paris, Terra Cotta or Wood, well packed in boxes, bbls., or casks, O.R.....	1½
Incubators, boxed or crated.....	1..... 3
Indigo, in cases.....	1
Indurated Fibre—Same as Woodenware.	

1.—Continued.

L.C.L. C.L.

Ink, in glass, stone or tin, in cases, O.R.	1.....3
" in kegs, barrels or casks	3.....5
Insulators.—See Telegraph Supplies.	
Iron:—	
Anchors, Anvils, and Heavy Forgings	3.....5
Axles, Carriage or Waggon	3.....5
Bar, Band, Boiler	4.....5
Beams, Columns, Girders, in box cars	3.....5
Beans, Columns, Girders, on platform cars.— Same as Bridge Material.	
Bloom	4.....5
Bolts, Nuts, Rivets, Washers	3.....5
Bedsteads, set up, O.R.	D 1
" K.D., folded	1
" K. D., closely boxed	2.....5
Rollers	3.....5
Bridge Material, in box cars	3.....5
" " too large to go into an ordi- nary box car, and necessi- tating a platform car for car- riage. See rule 6.	
Buckets, nested	3.....5
Buggy Seats, set up	2.....4
" nested	3.....4
Castings—light, loose, in bundles, under 100 lbs. per bdl., O.R.	1.....5
" " " 100 lbs. per bundle, or over, O.R.	2.....5
" " " in boxes or casks, O.R.	3.....5
" dressed and finished, O.R.	1.....4
" Malleable, in the rough, in boxes or casks	3.....5
" heavy, 100 lbs. per piece or over, O.R.	3.....5
Heavy Castings, over 2,000 lbs. per piece, to be loaded and unloaded by owners.	
Chairs	2.....5
Closet Cisterns	2
Conduit Pipe, cement lined	4.....7
Doors	2.....5
Drums, empty	1.....5
Evaporators, Sugar or Fruit, K.D., loose and detachable parts detached, crated, or boxed	1
Evaporator Tanks, Galvanized Iron or Tin	4 1
Fence Stays or Guards	3.....5
Fencing, Railing	2.....5
Fillings	4.....10
Fire Escapes, with or without water pipe,—in sections not over 15 feet long, in bundles, boxes or crates	3.....5
Fire Plugs and Water Gates	3.....5
Fountains, K.D.	1.....4
Galvanized Iron, Zinc or Tin Eave or Gutter Pipes.—Same as Metallic Eavetroughs.	
Grates and Fronts, unfinished, in bundles, under 100 lbs. per bdl.	1.....5
" " " 100 lbs. per bdl., or over	2.....5
" " " finished, O.R.	1.....4
" " " K.D. and boxed	2.....4
Hoops	3.....5
Horse Shoes	4.....5
Horse Shoes and Nails, in boxes or kegs, in mixed cars5
Horse Weights, loose	1
" boxed	3
Lath, in bundles, O.R.	3.....5

I.—Continued.

L.C.L. C.L.

Iron—(Continued):—

Lath, in crates or boxes.....	4.....5
Lead, White or Red, in tins, loose.....	2.....4
Liquor, in wood, O.R.....	3.....5
Mantels and Fronts, set up, O.R.....	1.....4
" " K.D. and boxed.....	2.....4
Metallic Ceiling.....	3.....5
" Shingles, in packages.....	4.....7
" Statuary and Ornamental Figures, crated or boxed, O.R.....	2.....5
Nitrate of, in drums or casks.....	4.....5
Ore.....	4.....10
Pig and Speigle.....	4.....10
Pipe (gas and water, light).....	3.....5
Pipe, 5 in. diameter and over.....	4.....7
" (Hot Air, Steam or Water-Coil).—Same as Radiators.....	3.....6
Pipe Fittings, in boxes, kegs or bbls.....	2.....4
Pots, Pans and Stove Furniture, O.R.....	2.....4
Pulleys.....	2.....4
Pumps.....	2.....4
Pyrites. Same as Iron Ore.....	
Rings, or 5th Wheels, Carriage or Waggon, " " in bundles.....	1.....5
" " Carriage or Waggon, in packages.....	2.....5
Rolls, loose, O.R.....	1.....5
" boxed, or wrapped in canvas, O. R.....	3.....5
Roofing.....	3.....5
Russia, (Sheet) O.R.....	1.....4
Safes, 10,000 lbs. each or over, O. R.....	2.....4
" under 10,000 lbs. each, O.R.....	3.....4
Safes of 1,000 lbs. each, or over, to be loaded and unloaded by owners.....	
Sash—Shutters.....	2.....5
Serap, including old rails, old wheels, etc.....	4.....10
Shafting—wheels and pulleys attached.....	1.....6
" " detached.....	2.....6
Shafting requiring a platform ear for carriage (whether full capacity of ear be oc- cupied or otherwise). See rule 6.....	
Sheet, Sheet Galvanized, Sheet Tinned.....	3.....5
Ship Knees.....	3.....5
Shovel Blanks (without handles).....	3.....5
Sinks.....	2.....4
Sinks, nested.....	2.....4
Sleigh and Cutter Gear, K.D., in bundles.....	1.....5
Smoke Stacks.....	3-1
" " requiring a platform ear for ear- riage (whether full capacity of ear be occupied or otherwise). See rule 6.....	
Spring Clips, Carriage or Waggon, in packages.....	3.....5
Stable Fittings, Feed Boxes, Hay Racks, Stall Posts, etc.....	2.....5
Statuary and Ornamental Figures, O. R.....	1.....4
Stills and Worms.....	D 1
Stretchers, for wire fencing, in boxes or kegs.....	3.....5
Toe Calks, in boxes.....	3.....5
Tyres, other than R.R. Supplies.....	3.....5
Tyre Upsetters.....	3.....5
Valves.....	3.....5
Vault and Prison Work.....	3.....5
Vases.....	1.....4
Vises.....	3.....5
Waggon Boxes, or Thimble Skeins, loose.....	2.....5
" " in bundles.....	3.....5

Iron—(Continued):—

Water Wheels	2.....5
Yellow or Murtz Metal for sheeting ships..	3.....5
Iron, for Railway Supplies, viz:—	
Cattle Guards.....	4.....7
Fish Plates, Spikes, Bolts, for track laying purposes	4.....7
Frogs and Crossings	4.....7
Chairs, Tyres	4.....7
Wheels, Axles, Rails	4.....7
Isinglass, in cases.....	1
Ivory and Ivory Black, in packages	1
Ivory Nuts, or Blocks, in packages	3.....4

—J—

Jacks, Hand, loose.....	2
" boxed or crated	3
Japanware.—Same as Tinware.	
Japanese Goods.—Same as Fancy Goods.	
Japonica.....	3.....5
Jellies.—See Preserves.	
Jewellers' Scrap or Sweepings	1
Joiners' Work (subject to Note at foot of this article), as follows:—	
Blinds, Inside—Door and Window	1
" Outside, with Slats, racked, O.R.....	2
Balusters and Turned Work, O.R.....	2
Counters, if in box cars, O.R	1
Door Frames, O.R.....	1
Doors, loose, O.R.....	3
Doors, racked or crated, O.R.....	3
Mantels, O.R.....	1
Mouldings in White, in bundles, O.R.....	1
" in boxes or crates	2
Panelled Work, O.R.....	2
Planed and Moulded Boards, O.R.....	3
Shelving, Baseboards, etc., O.R.....	3
Sashes, Glazed, with common glass, well crated or boxed, O.R	1
" Unglazed, O.R.....	1
" K.D. in bundles.....	2
Shutters, close, O.R.....	2
Joiners' Work, not otherwise specified.....	1
" all kinds, in box cars.	6
NOTE.—Joiners' work, requiring a platform car for carriage (whether full capacity of car be occupied or otherwise). See rule 6.	
Junk.....	3.....5
Jute.....	3.....5

—K—

Kaoline.—Same as Clay.	
Kalsomine.....	4.....7
Knees, Ship.—See Lumber.	
" Iron.—See Iron.	
Knitting Machines, Hand, in boxes.....	1½
" " Power.—See Machinery.	

	L.C.L. C.L.
Laerosses, in bundles	D1
" in boxes	1
Ladders	D1.....6
" Sectional, Telescoped	2.....6
" Step	1.....6
Lamp Black	1
Lamps and Lanterns, well packed, O.R.	1.....4
Lard	3.....5
Lasts, tied in bundles or sacks	1.....5
" in boxes	2.....5
Last Blocks10
Laths.—See Lumber.	
Lawn Tennis Sets, in boxes	1
Lead, White or Red, in tins, loose	2.....4
" " " packed in wood ...	3.....5
" " " in kegs, casks, drums or	
irons	3.....5
" Bar, Pig, Sheet and Pipe	3.....5
" Scrap	4.....7
Leather, loose	1.....4
" in bundles, rolls, boxes or bales	3.....5
Leather Board	3.....5
Leather, Patent, in boxes	1
Leather Scraps	3.....5
Leather Belting.—See Belting.	
Lemons.—See Fruit.	
Lemon Syrup, in glass, packed in wood	1
" " in wood	2
Lieorice—Stick, Root, or Mass	1
" Mass or Paste, in boxes	2
" Powdered, in barrels	3
Lightning Rods, in bundles	1
" in boxes	3.....4
Lime, Common	4.....10
Lime Fruit Juice. Same as Liquors, Native.	
Linseed.—See Seed.	
Linseed Meal.—See Flaxseed Meal.	
Liquors, in demijohns or baskets, O.R. released. D 1	
Foreign Wines, Spirits and Cordials, in glass,	
tins or jugs, securely packed in	
boxes or barrels, O.R. released....	1.....3
" Wines, Spirits and Cordials, in wood,	
O.R. of breakage, leakage or freezing	2.....4
" O.R. of breakage, leakage or freez-	
ing, mixed earloads, in cases and	
wood3
Native Wines, Spirits and Cordials, in glass,	
tins or jugs, securely packed in	
boxes or barrels, O.R. released....	1.....4
" Wines, etc, in stoneware jugs, covered	
with wickerwork and capped with	
wood, O.R. of breakage, leakage	
and freezing	1.....4
" Wines, Spirits or Cordials, in wood,	
O.R. of leakage, breakage or freez-	
ing	3.....5
" O.R. of breakage, leakage or freezing,	
mixed earloads, in cases and wood4
" O.R. of breakage, leakage or freezing	
—mixed ears in wood and cases.	
When loaded with 20,000 lbs. or	
over in wood, will be 5th class for	
the wood, and 4th class for the cases	
in same ear.	

Shipments of high-class liquors, such as Champagne, Burgundy, Moselle, etc., must be released.

Litharge.—Same as Lead, Red.

Lithographic Stones, in boxes, O.R. 1

Live Stock will only be carried at owners' risk; to be loaded, unloaded and fed by owners at their expense and under the following regulations:

In earloads, full actual weight should be charged for, but not less than the following minimums:

Horses.....	20,000 lbs.9
Cattle.....	20,000 lbs.9
Live Hogs, S. D.....	20,000 lbs.9
Live Hogs, D. D.....	28,000 lbs.9
Sheep, S. D.....	18,000 lbs.9
Sheep, D. D.....	26,000 lbs.9

Calves, under six months' old, same as sheep.
" six months' old or over, to be rated same as Cattle.

Hogs, Sheep, Calves or Small Animals must not be loaded under large Animals or Cattle in the same ear. *In all cases* where large and small animals are shipped together in same ear, they must be kept separate by a partition or by partitions, which must be put up by the shippers at their expense and at their risk as to sufficiency or otherwise. This rule, however, will not be applied to milch cows with their calves.

Horses or Cattle loaded with Hogs or Sheep in mixed earloads, or Horses loaded with Cattle, to be kept separate by a partition, will be charged at the weight for Cattle in earloads and at the highest rate for either.

Cattle and Hogs in mixed earloads, loaded in single-deck ears, will be charged at the weight and rate for Cattle.

Hogs and Calves, or Hogs and Sheep or Hogs, Sheep and Calves, in mixed earloads, will be charged for at the weight for Hogs in earloads, and at the highest rate for either; Calves not six months old being subject to the rate for Sheep.

When shippers are allowed to double deck, or partially double deck ears, a quarter deck will be charged 2,000 lbs. extra; over a quarter and not over half a deck, 4,000 lbs. extra; over half a deck full charge for double deck. The cost of putting in part decks to be borne by the shipper, but when full double deck rate is charged \$5 will be allowed the shipper for putting in the extra deck.

Fowls or Poultry, in packages, in mixed earloads with Cattle or Horses, Sheep or Hogs (the Cattle or Horses, Sheep or Hogs, to be kept separate from each other and from the Fowls or Poultry), will be charged at the weight for Cattle in earloads, and at the highest rate for either.

When more than a carload of Live Stock is offered, the surplus should take less than carload weight and rate.

Live Stock—(Continued) :—

Live Stock in Palace or other Patent Stock Cars will be in all respects subject to the maximum and minimum weights established for the conduct of such traffic in the regular live stock cars of the roads interested.

Owners or drivers may be taken free on the same train with their Live Stock, in consideration of their assuming the risks and obligations mentioned in the contract to be signed by them, and under the following conditions :

One, two or three cars, one person. Four, five or six cars, two persons. Seven, eight, nine or ten cars, three persons.
Over ten cars in one lot, four persons.

RETURN PASSES WILL NOT BE GIVEN.

LIVE STOCK IN L.C.L. LOTS, AS
FOLLOWS :—

Bulls, under one year old.....	1,000 lbs. each	1
Bulls, one year and under two.....	3,000 lbs. each	1
Bulls, over two years.....	4,000 lbs. each	1
Cattle or Horned Animals :		
One animal.....	2,000 lbs.	1
Two animals.....	3,500 lbs.	1
Three animals.....	5,000 lbs.	1
Each additional animal in same car.....	1,000 lbs.	1
Calves :		
Under six months old.....	500 lbs.	1
Over six months and under one year.....	1,000 lbs.	1
Cow and Calf together.....	2,500 lbs.	1
Colts, under six months' old.....	1,000 lbs.	1
Hogs, Goats, Sheep and Lambs, not crated, not taken except by special authority.		
Hogs, Sheep, Lambs or other small animals, in boxes or crates, actual weight.....		D1
Horses, Mules, etc. :		
One animal.....	2,000 lbs.	1
Two animals.....	3,500 lbs.	1
Three animals.....	5,000 lbs.	1
Each additional animal in same car.....	1,250 lbs.	1
Mare and Foal, together.....	2,500 lbs.	1
Stallions and Jacks.....	4,000 lbs.	1
Shetland or Welsh Ponies, one animal.....	1,200 lbs.	1
Shetland or Welsh Ponies, each additional animal in same car.....	1,000 lbs.	1
When other animals are shipped in cars with a mare and foal, or cow and calf, together, under the above special weights, the other animals are to be rated and charged for without reference to the weight charged for the Mare and Foal or Cow and Calf.		
When other animals are shipped in cars with Bulls, Stallions or Jacks, they are to be rated without reference to the specific weights charged for the Bulls, Stallions or Jacks.		

Live Stock—Continued :—

When small animals are allowed to be taken without being crated, the following will be the minimum weights charged :

A single Calf, Sheep, Lamb, Pig or Hog, 400 lbs. each, or actual weight if in excess of 400 lbs..... 1

Each additional Calf, Lamb, Sheep, Pig or Hog, in same car to same consignee, 200 lbs., or actual weight if in excess of 200 lbs.

In no case shall the charge for less than carload exceed the charge for a carload.

Owner or agent must accompany each consignment of Cattle or Horses in C. L. or less when the distance is over 100 miles.

Men in charge of L. C. L. lots of Cattle or Horses, on the same train only, will be charged half the ordinary 1st class fare, in consideration of their assuming the risks and obligations mentioned in the contract, and this amount must be shewn as a separate item on the waybill.

No reduction will be made for men in charge of L. C. L. lots of Hogs or Sheep.

SPECIAL REGULATIONS GOVERNING THE RATES UPON LIVE STOCK GIVEN ABOVE, AND RULES APPLYING TO ORDINARY LIVE STOCK OFFERED FOR TRANSPORTATION :—

Agents must thoroughly familiarize themselves with the following, and take particular care to acquaint consignees, or their agents, with the requirements of the Company before accepting Live Stock for transportation.

All shipments of Live Stock must be consigned direct to the party or parties to whom same is to be delivered at destination, and will not be received for transportation when consigned to the order of "....." or notify "....."

The rates and classification of Live Stock as given above, are based upon the following maximum values :

Horses or Mules, not exceeding \$100 each.

Cattle or Cows, not exceeding \$50 each.

Fat Hogs or Fat Calves, not exceeding \$10 each.

Sheep, Lambs, Stock Hogs or Stock Calves, not exceeding \$5 each.

If a full carload from one shipper to one consignee, entire contents of car not to exceed \$800

Live Stock will be taken at the above weights, rates and values only when the Company are fully released, in accordance with the terms of their special Live Stock Transportation Contract, which shall be duly filled up and executed by the shippers, owners, or their agents, and by the station agent, on behalf of the Company, and the person or persons travelling with such Live Stock, and receiving free transportation as aforesaid, shall be duly au-

Live Stock—(Continued):—

thorized to sign such contract, or contracts, on behalf of the owners or shippers of such Live Stock.

In cases where shippers, owners, or agents decline to enter into such contract, the traffic may be taken at double rates, under ordinary liability as common carriers, on the ordinary shipping notes and receipts of the Company, in which case shippers, owners, or agents must declare the value of the animals; and in the event of such valuation being in excess of the above figures, the regulations below will go,VERN.

The Company does not agree to transport Live Stock by any particular train within any specified time, nor in time for any particular market, and agents must not give receipts containing such guarantees. Neither will the Company be responsible for any loss or damage occurring by the refusal, failure or inability of connecting lines to receive and forward the stock after tender of delivery.

When stock belonging to two or more persons, or when consigned to different parties, is loaded in same car, or when loaded in way-car, a distinguishing mark should appear upon each head of stock. A tag, securely fastened to the halter, will be sufficient for Horses or Mules. Upon Cattle or small stock, one or more initial letters should be marked upon the side of each head of stock. Corresponding initials should be placed opposite the name of consignee on the way-bill or manifest so as to insure correct and prompt delivery at destination. And in the event of the owner or owners neglecting to comply with the foregoing provisions, or insufficiently marking their stock, the Company shall have the right in their discretion to deliver the same to any one of the consignees without liability to the others of such consignees.

Fancy Small Stock requiring special care, should be in cages, or coops, or boxed; and agents will recommend owners to forward such animals by regular express line, which has agents in charge to care for them.

Animals known to be vicious, or so spirited that they cannot safely be placed alongside of other stock, and Mares with colts alongside, will not be received unless released.

The Railroad Company does not assume any risks from the acts of the animals themselves, or to each other, such as biting or kicking. Such risks must always be borne by the owner. Nor will the Company be responsible for any stock escaping. Nor will the Company hold itself liable for injury to Calves, Hogs, or other stock, from suffocation, exhaustion, heat or cold.

Live Stock—(Continued):

Except when shipped in a full car, sucking Calves, accompanying Cows, will be charged for in the manner provided for such like small animals.

In case of accident, unavoidable delay or other reason, because of which it becomes necessary to send Live Stock forward unaccompanied, it will be permissible to do so; and if for this or other reason, feed is furnished for the stock by or through the Railroad Company, a charge will be made for the same and collected from the consignee upon delivery. Agents will note such charges or expenses on the way-bill or manifest and advise agent at destination by telegraph.

SPECIAL REGULATIONS FOR LIVE STOCK AND VALUABLE ANIMALS.

Race Horses, Stallions, and other high-priced animals, when shippers are unwilling to have them transported at the above list of values for ordinary Stock, will be taken only by special arrangement and at ONE AND ONE-HALF 1ST CLASS RATES, calculated on the estimated weights named below, and agent must not accept for shipment such valuable animals without first communicating with the General or Divisional Freight Agent.

When value of each animal exceeds:—	And is not over:—	For one animal charge:—	For two or more animals in same car, to one consignee, charge each:—
\$	\$	Pounds.	Pounds.
100 00	400 00	4,000	3,000
400 00	600 00	4,500	3,500
600 00	800 00	5,000	3,700
800 00	1,000 00	6,000	4,500
1,000 00	1,500 00	8,000	6,000
1,500 00	2,000 00	10,000	7,500
2,000 00	2,500 00	12,000	9,000
2,500 00	3,000 00	14,000	10,500
3,000 00	3,500 00	16,000	12,000
4,000 00	4,500 00	20,000	15,000
4,500 00	5,000 00	22,000	17,500

Animals of greater value than given above will be subject to a corresponding advance in weights furnished in the above table.

Cattle, or small animals valued by Shippers at more than the maximum valuations given for ordinary stock and not over \$100

Live Stock—(Continued):

each, will be rated at 200 lbs. extra for every additional \$10 or part thereof in value until the charge for animals over \$100 each is reached, when the latter and succeeding valuations in above table will apply. In cases where the owner, shipper or agent of such valuable animal or animals refuses to sign a special agreement for the transportation of such animal or animals and insists upon the Company taking the same at the common law liability, in such case the rates for transport without special agreement shall be three times the first class rate as fixed above.

Lobsters, Fresh, in casks or boxes, O.R. 1
" in tins.—See Canned Goods.

Logwood and Logwood Extract.—Same as Dye Stuff.

Looking Glasses.—See Glass Mirrors.

Lumber, Common, and other, to be loaded and unloaded by owners, will only be carried at the convenience of the Company, and at the risk of the owners, shippers furnishing their own stakes. Lumber, Common, to include:—

Ash, Birch, Beech, Cherry, Cedar, Chestnut, Elm, Hemlock, Hickory, Larch, Maple, Oak, Pine, Poplar, Spruce, Sycamore, Tamarack, Willow, Staves, Laths, Shingles, Clapboards, Bolts, Edgings, Slabs, Shooks, Heads, Hoops, Hoop and Hop Poles, Ship Knees, Blocks, Raftsmen's Floats, Oars, Traverses, Toggles and Withes, Pegwood, Poplar and Pulp Wood 4.....10

Lumber, common, planed, tongued and grooved 4.....10

Rails, Fence Posts, Telegraph Poles and Ties of all descriptions, will only be taken by special contract.

Mahogany, Rosewood, Walnut, Lignum Vitæ, and other valuable Hardwoods 3.....7

NOTE.—All cars with Lumber should be loaded to their full capacity, as marked upon them, at C.L. rate per 100 lbs. Cars without capacity marked upon them, should only be loaded with 24,000 lbs. All excess over the capacity of cars up to 2,000 lbs. each, shall be charged proportionate C.L. rate, but if the excess be over 2,000 lbs., the whole excess over the capacity of the car shall be charged L.C.L. rate as above; and the Companies reserve the right to remove all the excess, at the expense of the owner, and forward the same on another car.

Lye, Concentrated 2.....4

—M—

Macaroni 2.....4
Machine or Cattle Cards 1

Machinery (subject to note at foot of this article),
at O.R. in each case, as follows:—

	Band Saws.....	1
	Bark Mills.....	1
	Bolt Cutters.....	1
	Bran Dusters.....	D 1
	Brick Machines, set up.....	1
	" K. D.....	3
	Cards, Cotton or Woollen.....	D 1
	Cob Mills.....	1
	Cornice Machines or Brakes, Shears, Beadeis, Folders, Seamers, Groovers, Formers and Burring Machines.....	1
	Cotton Presses.....	1
	Cider Mill Presses.....	1
	Cheese Presses.....	1
	Ditching Machines.....	1
	Drag Saws, with horse-power, Sweep.....	1½
	Dustless Elevator Separators, set up.....	D 1
	" " K. D. and boxed.....	1
	Engines, Portable or Stationary.....	1
	Flour Dressers. Same as Purifiers.....	
	Flour Feeders, set up.....	1½
	" " K. D.....	1
	Flour Roller Mills, iron, set up.....	1
	Hemp Machines.....	1
	Horse-Powers, Sweep.....	1½
	" " Tread.—See Agricultural Im- plements.....	
	Knitting Machines, Power.....	1½
	Lathes, wood or iron.....	1
	Looms.....	1½
	Meat Choppers, in frame.....	1
...10	Milling Machines (Iron Working).....	1
	Mortice Machines.....	1
...10	Moulding Machines.....	1
	Nail Machines.....	3
	Ore Pulpers or Crushers, set up.....	D 1
	" " K. D., detachable parts detached and bundled or crated.....	1
...7	Planing Machines and Jointers.....	1
	Printing Presses.....	1
	Purifiers, set up.....	D 1
	" K. D. and boxed.....	1
	Re-Sawing Machines.....	1
	Road or Drag Scrapers, with wheels.....	1
	" " without wheels.....	2
	Saw Mills, Portable.....	1
	Sawing Machines, Tread.....	3-1
	Saw Tables.....	1
	Shearing Machines.....	1
	Shingle Machines.....	1
	Smut Machines.....	1½
	Street-sweeping, set up, O.R.....	3-1
...4	" K. D., crated or boxed, O. R.....	1
	Stumping Machines, K. D., detachable parts removed.....	2
	Swing Cut off Saws (Iron).....	1
	Tenoning Machines.....	1
	Machinery, not otherwise specified, in frame, O.R.....	1½
...4	" not otherwise specified, close- ly boxed, O.R.....	1

Machinery—(Continued):		
Machinery, Heavy, K. D., not otherwise specified, 1,000 lbs. per piece or over, with connections and detachable parts removed and boxed. O.R.	2	6
" all kinds	2	6
NOTE.—Engines or machinery requiring a platform car for carriage (whether full capacity of car be occupied or otherwise). See rule 6.		
Engines or machinery over 2,000 lbs. per piece, to be loaded and unloaded by owners.		
Machinery, and parts thereof, when shipped to manufacturers for repairs, to be one class lower than the Tariff on New Machinery, but not less than 10th class.		
Machines, Sewing, set up, not boxed or racked, O.R., minimum C.L. 16,000 lbs.	3-1	3
" " set up, boxed or racked, O.R., minimum C.L. 16,000 lbs.	1	3
" " K.D. and boxed, O.R.	2	4
" " Stands, K.D., in bundles	1	4
" Paging and Numbering, O.R., crated or boxed	1½	
" Automatic, for registering weight, height, strength or lung power, and for delivery of confectionery and for similar purposes, O. R., well boxed	1½	
Madder, in cases	2	
" in barrels or casks	3	
Magazines, returned empty, used in transporting gunpowder	4	
Majolica Ware.—Same as Crockery.		
Malt.—See Grain.		
Mangles, set up, not boxed	1½	6
" crated	1	6
" K.D., and boxed	2	6
Manilla, in bales, O.R.	3	5
Manure, Stable, in cattle ears only	10	
Maple Sugar.—See Sugar.		
Maple Syrup.—See Syrup.		
Marble, Polished, Carved or Lettered, not boxed.—NOT TAKEN.		
" Polished, Carved or Lettered, boxed, O.R., prepaid	1	5
Marble Slabs, Blocks or Spires, Polished, not Carved or Lettered, boxed, O.R.	2	5
" Slabs, Blocks or Spires, Unwrought	4	7
" Tile, O.R.	4	7
" Dust, in barrels	4	7
" Blocks, Rough from Quarry	10	
Marbles, in boxes or casks	2	
Masts. Taken by special contract only.		
Matches, in boxes, securely boxed	1	5
" loose in cases.—NOT TAKEN.		
" in outer paper boxes not taken unless securely packed in wooden cases.		
Match Splints	3	7
Matte.—Copper, Nickel, or Copper-nickel, value not to exceed \$100 per ton and to be so limited by written release	4	6
Mattresses.—See Furniture.		
Mats and Rugs	1	

	Matting—Cocoa, Hemp, etc.	1.....4
	Meal.—See Flour and Meal.	
	Measures, loose.	D 1
	" nested	1
.....6	Meats, Fresh, prepaid, O.R.	1.....4
	" Bologna Sausage, O.R., prepaid	2.....4
	" Mince, and Sausage, prepaid, O.R.	1.....4
	" Minced, in paper packages, closely	
	boxed	3.....5
	" Salted, Smoked or Dried, loose	2.....5
	" " " in bags	2.....5
	" " " in boxes, barrels or casks	3.....5
	Mechanics' Tools, in boxes	1
	Medicines.—See Drugs.	
	Melons, prepaid O.R.	1.....6
	Melons; L.C.L., must be in packages.	
	Merchandise—Shippers are required to give full description of contents of packages; all articles described as merchandise will be charged.	D 1
.....3	" in trunks, contents described, O.R., released	D 1
.....3	Metallic Sacking, in packages	3.....4
.....4	Metallic Shingles.—See Iron.	
.....4	Metal Filings or Dross	4.....10
	Methylated Spirits.—Same as Liquors (Native).	
	Mica, Manufactured, in packages	1.....4
	Mica, Pulverized or Scrap, in pkgs.	2.....5
	Milk. Taken by special contract only.	
	Milk Cans, O.R.	1½
	Milk Can Stock, tin or iron, in parts, boxed or	
	crated	2.....4
	" Condensed.—Same as Canned Goods.	
	Mill Boards.—Same as Binders' Boards.	
	Millet.—See Seeds.	
	Mill Dogs	1
.....6	Mill Feed.—Same as Flour and Meal.	
.....6	Mill Feed.—Same rule as to minimum C. L.	
.....6	weight as for Flour and Meal, except in	
.....5	cases where car cannot contain 30,000	
.....10	lbs., in which case actual weight will	
	be charged, but not less than 24,000 lbs.	
	Mill-Stones.—See Stones.	
	Millinery Goods:	
	Artificial Flowers in boxes, O.R., P.P. or	
.....5	guaranteed	D 1
	Feather Plumes for hats and bonnets, boxed	D 1
.....5	Feather Tips for millinery purposes, boxed	D 1
.....7	Hats and Bonnets, trimmed, boxed, O.R.	D 1
.....7	Millinery Goods, N.O.S.	1
.....7	Straw Braid	1
.....10	Straw Goods, N.O.S.	D 1
	Mineral Waters.—Same as Ale.	
	Mineral Wool	3.....5
.....5	Moccasins.—Same as boots and shoes.	
	Models for Statuary and Stucco Work	D 1
	Molasses, in wood, O.R. of leakage	3.....5
	" " " in bundles	1
	" " " in boxes	2
.....7	Moss, in sacks	D 1
	" in bales	1.....4
.....6	Mouldings—Gilt or Finished, in bundles	D 1
	" " " crated	1½
	" " " boxed	1
	" Common Building.—See Joiners' Work.	

M.—Continued. N. O. L.C.L. C.I.

Mouldings—Picture, in white, in bundles.....	1
Picture, in white, crated or boxed.....	2
Mucilage, in glass, packed in boxes or barrels..	1
in tins, packed in boxes or barrels... ..	2
dry, in boxes.....	2
Musical Instruments, not boxed.—NOT TAKEN.	
Pianos and Organs, boxed	
and released, O.R.....	1.....4
Church Organs, K.D.,	
loaded and unloaded by	
owners, O. R.....	D 1.....6
boxed, not otherwise specified, O. R.....	D 1
Mustard, in jars or tins, loose, O.R.....	1
packed in boxes.....	2
Mustard Seed.....	2

—N—

Nails and Spikes, in bags.....	2.....5
in kegs, boxes or cases.....	4.....5
Nails and Horse Shoes, in boxes or kegs, in	
mixed cars.....5
Naphtha.—Same as Coal Oil. Must not be taken	
for shipment by water.	
Neck Yokes, unfinished, in white.....	3
finished.....	2
Nitro Glycerine.—NOT TAKEN.	
Nitrate of Soda.—See Soda.	
Notions, not otherwise specified, in trunks, O.R. D	1
in boxes, O.R..	1
Nutmegs.....	1.....3
Nuts, Edible, in bags, O.R.....	1.....4
in boxes or barrels.....	2.....4

—O—

Oakum.....	2.....4
Oars, Boat.....	1.....6
Oats.—See Grain.	
Oats, Rolled. Same as Flour and Meal (estimated weight 200 lbs. per bbl.)	
Oatmeal.—See Flour and Meal.	
Ochre, in cans, kegs or boxes.....	2
in barrels or casks.....	3.....5
Oil Cans, Glass, in tin jackets, crated or boxed,	
O.R.....	2.....6
Oil Cans, Tin, in wooden jackets or boxes.....	1.....6
Oil, in glass or stone, well packed, O.R.....	1
in kegs or cans, securely boxed, O.R.....	2.....4
Oil, in wood, O.R.....	3.....5
for machine or lubricating purposes, in	
wood, O.R.....	3.....5
Coal or Mineral Oil must not be taken for	
shipment by water.	
Oil Cake.....	4.....8
Oil-Cloth, wrapped, crated or boxed, 13 ft. long	
and over, loaded in box cars O.R.....	1.....6
wrapped, crated or boxed, under 13 ft.	
long, loaded in box cars, O.R.....	2.....5
requiring a platform car for carriage	
(whether full capacity of car be occupied or otherwise). See rule 6.	

Onions.—See Vegetables.

Opticians' Instruments, O.R..... 1

Oranges.—See Fruits.

Ore:—

Iron, Lead, Copper..... 410

Matte—See Matte, page 49.

Mica, or Crude Mica, value not to exceed \$100
per ton, and to be so limited by written
release..... 4.....7Nickel—Value not to exceed \$100 per ton and
to be so limited by written release..... 4.....10Silver, Gold—Value not to exceed \$100 per
ton, and to be so limited by written release 4.....7

Organs.—See Musical Instruments.

Ornaments.—See Plaster of Paris.

Oxide of Iron.—Same as Earth Paints.

Oxygen Gas, in iron or steel tubes or cylinders 3 5

Ox Yokes..... 2

Oysters and Clams, Fresh, in kegs or pails, or in
cans, boxed or crated, O.R. 1.....3

" " Shell, in bags or barrels, O.R. 3.....5

" " Pickled.—See Pickles.

Oziers (Willow Reeds), in boxes, bales or bdls. 2.....6

-P-

Pails.—See Woodenware.

Paintings, etc., boxed and released, value not
exceeding \$20 per package, and to
be so expressed on shipping note.. 1" Pictures, Engravings, Chromos, etc.,
boxed and released, value over \$20
but not to exceed \$50 per package,
and to be so expressed on shipping
note..... D1" over \$50, not exceeding \$200 in value,
boxed and released 3-1" over \$200. Taken by special contract
only. Shippers must declare value.

Paints, Dry, in boxes, barrels or kegs..... 3.....5

" in oil, in cans, jacketed, loose, O.R. of
leakage..... 1" in oil, in cans or pails, boxed, crated or
packed in barrels..... 3.....5" not otherwise specified, in bbls., kegs,
drums or irons..... 3.....5

" in buckets..... 2.....4

Palm Leaf, in bundles 1

Panorama and Theatrical Scenery, C.R.... D1.....4

Paper, Stationery, in boxes..... 1

Paper Goods, such as Collars, etc., in boxes 1

Paper Hangings, in bundles or bales, O.R. of
chafing 2.....3

" " in boxes 2.....3

" Patterns, in cases, prepaid..... 1

" Printing or Wrapping, O.R. 3.....5

" Building and Roofing, O.R. 4.....5

" Bags, in bundles, bales or boxes, O.R.... 3.....5

" Stock.—See Rags.

" Boxes.—See Boxes.

" Toilet, in boxes 3.....5

" Egg Fillers, folded flat, boxed, solid .. 3.....5

Papier Mache Goods D1

Paris Green, in boxes, bbls. or casks..... 2.....4

Pasteboard, in bundles	25
" in boxes	35
Paraffine Wax	24
Paraffine Candles.—See Candles.		
Patent Medicines, shipped by manufacturers..	13
Patterns, Wood or Metallic, O. R.	1½	
Peaches.—See Fruits.		
Pearline, and other Washing Powders	35
Peas.—See Grain.		
" Green.—See Vegetables.		
Pears.—See Fruit.		
Peat	310
Pelts and Peltries.—See Hides and Skins.		
Pencils, Lead, in boxes	1	
" Plate, in boxes	2	
Pepper.—See Spices.		
Pepper Sauce	1	
Perfumery, in cases	1½	
Phenyle (disinfectant), dry, in boxes, bbls. or casks	24
Phosphate	410
Phosphorus, only taken in tins, hermetically sealed and well packed in boxes.....	D1	
Photographic Material	1	
Pianofortes.—See Musical Instruments.		
Piano Legs and Stools, wrapped or crated.....	1	
" boxed	2	
Pickles, in glass or stone, well packed, O. R.	14
" in kegs or barrels	35
" in pails	25
Pictures.—See Paintings.		
Picture Frames.—See Frames.		
Picture Frame Backing, in bundles	47
Pigs' Feet, in boxes or barrels	3	
Pillows, Feather, Hair, etc.	D1	
Pill Boxes	D1	
Pile Drivers.—Same as Derricks.		
Piles. Taken by special contract only.		
Pimento, in boxes or barrels	1	
Pins, Toilet, in boxes	2	
Pine Apples, O. R., prepaid	13
Pipe Clay	3	
Pipe.—See Earthenware.		
Pipe, Iron.—See Iron.		
Pipe, Wooden	26
Pipes, Smoking, not otherwise specified, in cases common clay, in cases	15
Pitch, in barrels	47
Plants, in boxes, prepaid, O. R.	D1	
Plaster, Land	410
Plaster of Paris and Stucco, in barrels or bags.. Ornaments, in packages, O. R. prepaid	410
Plaster of Paris Images. See Images.	D1	
Plated Goods or Ware	1	
Plate, Electrotpe or Stereotype	1	
Plumbago, Crude	35
Porcelain.—Same as Crockery.		
Pork.—See Meats.		
Porter.—See Ale.		
Potatoes, Evaporated.—Same as Fruits (Apples) Evaporated.		
Potatoes, Sweet, in bags or boxes, O. R.	1	
" Common	48
Potatoes at O. R. of frost, and must be pre- paid between Nov. 1st and April 30th.		

...	5	Pottery.—Same as Earthenware.		
...	5	Poultry, Live, in coops, O.R.	D 1	6
...	4	Poultry, Dressed, O.R., prepaid	1	3
...	3	Preserves, in glass or stone, well packed, O.R.	1	3
...	3	" in pails or buckets, O.R.	1	3
...	5	" in kegs or casks	2	4
...	5	" in tin, boxed	3	5
...	5	" in pails or buckets, boxed or crated, O.R.	3	5
...	10	" in tins, cased	3	5
...	10	Printed Matter, unbound, in bundles, O.R. pre-		
		" " " paid	1	
		" " " in cases, prepaid	2	
		Prunes.—See Fruits, Dried.		
		Pulleys, Wood or Iron, for shafting	2	5
		Pumice Stone	2	
		Pumps, Iron or Wood	1	4
		Putty, in barrels, casks or boxes	3	5

-Q-

		Quicksilver, in iron flasks	1	
		Quinces.—See Fruit.		
		Quills, in boxes	D 1	

-R-

...	4	Radiators, including coils, boilers, pipes and fittings	3	5
...	5	Rags and Paper Stock, in sacks	3	10
...	7	" " pressed, in crates	3	10
		" " pressed, in bales	4	10
		Raisins.—See Fruit.		
		Range Boilers	2	5
		Rattan.—See Furniture.		
		Refrigerators, set up	1	
...	8	" K.D.	5	
		" C.L., in common cars 34 feet long and under; minimum, 14,000 lbs.		4
		" in furniture or racked platform cars; minimum, 20,000 lbs.		4
...	6	Rennets, in wood	2	
...	5	Retorts, O.R.	2	
...	7	Resin	3	5
...	10	Rice, in packages	3	5
...	10	Road Scrapers.—See Machinery.		
...	10	Roofing Composition, in barrels or casks	4	7
		" Material consisting of sand, gravel, tar, cement, and roofers' implements.	4	7
		Roots, Garden.—See Bulbs and Roots.		
		Roots, Seneca, in bales, boxes or bbls., O.R.	1	
		Ropes.—See Cordage.		
		Rosewood.—See Lumber.		
...	5	Rubber, Crude	3	5
		Rubber Goods, Boots and Shoes	1	
		" Belting, Hose and Packing	2	4
		" Old Rubber Scrap	3	5
		" Springs.—See Car Springs.		
		" in packages, not otherwise specified	1	
...	8	Rugs, in bales	1	
		Rum.—See Liquors.		
		Rushes, in bales or boxes	1	
		Rye.—See Grain.		
		Rustie Work, light and bulky	D 1	6

Saddlery :—		L.C.L. C.L.
Saddles and Harness, loose or in bundles	D 1	
" " in trunks	1½	
" " in boxes	1	
Saddle-trees and Sweat Pads	1	
Hames, in bundles	1	
" in boxes or casks	2	
Horse Collars, in sacks or bundles	1½	
" " in boxes or barrels	1	
Saddlery Hardware, in boxes or barrels	2	
Saddlery and Harness4	
Sleigh bells in cases	1	
Safes, Bread, Meat, Milk or Cheese	4-1	
" Iron.—See Iron.		
Sago	2.....4	
Sails, in bales	2	
Saleratus, in boxes or bbls.	2	
Salt, in small bags or boxes	3.....5	
" in sacks or barrels (or C.L. in bulk)	4.....10	
" in glass, boxed	2	
Salts, Epsom	3.....5	
" Glauber, in boxes or barrels	3.....5	
Saltpetre, in boxes	2.....5	
" in barrels	3.....5	
Samples, in trunks, O.R., released	D 1	
Sand in packages	4	
Sand10	
Sand paper	2.....5	
Sand Screens	D 1	
Sardines. Same as Tanned Goods.		
Sashes.—See Joiners' Work.		
Sashweights, loose	1	
" in bundles or boxes	3.....5	
Sauces.—Same as Preserves.		
Saur Kraut.—Same as Pickles.		
Sausage Casings, in barrels or kegs	2..... 5	
Sausages.—See Meats.		
Sawdust and Shavings	3.....10	
Sawbucks, Wooden, packed in bundles	2	
Saws, loose or on boards	1	
" boxed	2.....5	
" Buck, in bundles	1	
Sawing Machines.—See Machinery.		
Saw Mills, Sortable.—See Machinery.		
Seales and Scale Beams, not boxed	1.....4	
" " boxed	2.....4	
Seale Boards	3.....5	
" Weights, Metal	3.....5	
Scoops, Spades and Shovels.—See Hardware.		
Screws, Wooden	2.....5	
Sculpture, prepaid, O.R. released	D 1	
Seythe Snaths.—See Hardware.		
Seythe Stones, in boxes	3.....5	
Sea-grass, pressed, in bales	3.....7	
Seed, Bird and Canary, in boxes	1.....3	
" Hemp—Canary or Bird, in bags or bbls.	3.....5	
" Garden, in boxes, O.R.	1.....4	
" Blue Grass or Orchard, in bags or barrels,		
O.R.	1	
" Clover, Timothy or Red Top, O.R.	3.....5	
" Flax	3.....8	
" Field, not otherwise specified, in bags,		
boxes or barrels	2.....5	
" Tares	3.....5	
" Hungarian and Millet, O.R.	3.....5	
" Garden, returned unsold (by same road		
over which originally shipped)	4	

C.L.

...4

...4

...5

...10

...5

...5

...5

...10

...5

...5

...5

...10

...5

...4

...4

...5

...5

...5

...5

...7

...3

...5

...4

...5

...8

...5

...5

...5

Sewing Machines.—See Machinery.	
Shavings (Brewers') in bales	2.....4
Shellac.—See Gum.	
Shells, Sea, in packages, O.R.	1
Sheep Dip, in kegs or barrels	3.....5
Shingles, Metallic, in packages	4.....7
Ship Bread (Hard Tack), in bags or bbls.	3.....5
Shoddy in bags or sacks, not pressed, O.R. of fire	1.....5
“ in bales, machine pressed, O.R. of fire	3.....5
Shoes.—See Boots and Shoes.	
Shoe Findings	1
Shoe Pegs, in boxes	1.....5
“ in barrels or casks	2.....5
Shooks.—See Lumber.	
Shorts.—See Bran.	
Shot.—See Hardware.	
Shower Baths	D 1
Show Cases, O.R. released	3-1
“ Small, for Fancy Soap, Seeds, etc., boxed, O.R., released	3-1
Shrubby, loose, prepaid, O.R.	D 1
“ in bundles, prepaid	1.....5
“ in boxes, O.R. prepaid	3.....5
Sieves, O.R.	D 1
“ nested, crated or boxed	1
Sifters.	
Ash or Coal, not nested, loose or in bundles, O.R.	D 1
Crated or boxed	1
Flour and Meal.—See Sieves.	
Nested in bundles, strapped	1½
Sign Boards.—Same as Advertising Boards.	
Sisal, in bales	3.....5
Sizing, in sacks or barrels	2
Slag, Mill, and Cinders, prepaid10
Slate, Floor, in barrels, casks or boxes	4.....5
“ School, in boxes	2.....4
“ Roofing, O.R.	3.....10
“ Manufactured and Marbleized, well boxed, O.R.	1.....4
“ Slab, Manufactured, not Marbleized, well boxed, O.R.	4.....5
“ Slab, Manufactured, not Marbleized, not boxed5
“ Wash Tubs, Sinks and Tanks, loose, O.R.	2.....4
“ nested, crated or boxed	3.....5
Sleds and Sleighs, Children's or Hand.—See Vehicles.	
Sleigh Stuff.—See Carriage Goods.	
“ Shoes, Iron and Steel	3.....5
Smoke Stacks.—See Iron.	
Snowshoes, in bundles	D 1
“ in boxes	1
Snow Shovels, Wooden, in bundles	1
Snuff, in jars or bladders	1½
“ in boxes, barrels, casks or kegs	1
Soap, Fancy, Castile or Toilet, foreign, in boxes	1.....3
“ Fancy, Castile or Toilet, domestic	2.....4
“ Common, in boxes	4.....5
“ Oil or Soft, in barrels	4.....5
Soapstone, Crude	4.....10
“ Slabs and Manuf'ed Articles, O.R.	1
“ Dust	4.....7

—Continued.

L.C.L. C.L.

Soda, Bi-Carbonate, in boxes, kegs or barrels...	3.....5
" Ash or Sal Soda, in boxes, barrels or casks	4.....5
" Caustic, in iron drums	4.....5
" Nitrate, in iron drums	3.....5
" Nitrate of, in bags or bbls.	3.....5
" Salt Cake, in casks	4.....5
" Silicate, in glass	1
" " in wood	4.....5
" Water.—See Mineral Water.	
" Pearline and other Washing Powders....	3.....5
Solder, in packages	2
Spark Arresters	D 1
Spars. Taken by special contract only.	
Spelter	3.....5
Spices—Cloves, Cinnamon, Pepper, Allspice, Nutmegs, etc.	1.....3
Spice-Meal	2
Spinning Wheels	1
" Heads	D 1
Spirits.—See Liquors.	
Spirits of Turpentine, in barrels, or in cans securely boxed, O.R. of leakage.....	2.....4
This freight must not be taken for shipment by water.	
Spoke Drivers	1½
Sponges	D 1
Spools, in crates	2.....5
" in cases	3.....5
" in bulk7
" Paper—iron or wood, empty	2.....5
Springs, with Axles attached, wheels off	1½
" Rubber, Steel, Volute, Spiral—See Car Springs.	
" Carriage, Waggon and Seat	2.....5
" Wire, coiled in bundles	D 1
" Wire, in boxes, barrels or casks	1.....4
Stamped Ware, nested in crates, boxes or barrels	3.....5
Stamped Ware of Tin or Sheet Iron to be entitled to rate as such should be nested solid: that is, when the outside and bottom sur- faces rest against the inside and bottom of the article below, without any inter- vening space between the outside and inside surfaces, and will exclude articles with ears, handles, spouts, etc., attached, which nest, but not solid as above de- scribed.	
Starch, in sacks, bxs., bbls., or casks	3.....5
Stationery, in trunks	1½.....4
" in boxes	1.....4
Statuary.—See Sculpture.	
Steam Gauges, boxed	1
Steam Jacket Heaters	2.....4
Steam Shovels.—See Machinery.	
Stearine	3.....5
Steel.—Same as Iron.	
Steel Castings.—See Iron.	
Stone, Polished, Carved or Lettered, not boxed. NOT TAKEN.	
" Polished, Carved or Lettered, boxed, pre- paid, O.R.	1.....5
" Slabs, Blocks, Spires, Polished, not carved or lettered, in boxes, O.R.	2.....5
" Slabs, or Blocks, Unwrought	4.....10
" Coursing and Dimension	4.....10
" Tiling (Floor)	4.....7

5	Stone, Rubble, Cobble and Field	10
5	Stones, Grind.—See Grindstones.	
5	“ Scythe and Whet.....	3.....5
5	“ Mill, Finished, O.R.....	2.....4
5	“ “ Rough.....	3.....5
5	Stoneware.—See Crockery.	
5	Stone Wash Tubs, loose, O.R.....	2.....4
5	“ “ nested, crated or boxed, O.R....	3.....5
5	Stoves, and Stove Furniture of cast or sheet iron only (not tinware) shipped with Stoves, O.R.	2.....4
5	“ Sheet Iron Ovens, O.R., K.D.	1.....4
5	“ Sheet Iron Ovens, O.R.....	D 1.....4
5	“ Oil, packed in boxes or crates, O.R.....	1.....4
5	“ Gas, O.R.....	2.....4
3	“ Furnaces, O.R.	2.....4
	“ Furnace Castings.—Same as Iron Cast- ings, page 29.	
	Furnaces requiring a platform car for carriage (whether full capacity of car be oc- cupied or otherwise). See rule 6.	
4	Stove Boards, loose, O.R.....	1.....6
	“ “ racked, O.R.....	2.....5
	“ Brick or Lining.—See Fire Brick.	
	“ Plates, O.R.....	2.....5
	“ “ boxed or crated	3.....5
5	“ Pipes and Elbows—Corrugated or other, loose or in bundles, O.R. released.	4-1.....5
5	“ Pipes and Elbows, in crates or boxes, O.R. and released.....	D 1.....5
7	“ Pipe, not jointed, nested and crated.....	3-1
5	“ “ manufactured, in sheets, flat or round, nested, crated or boxed...	3.....5
5	“ “ Iron, manufactured, flat, crated...	2.....5
5	“ “ Thimbles, stone, cement or as- bestos	2.....5
4	Stove Polish, Liquid.....	1.....5
5	Straw.—Same as Hay.	
	“ Boards.....	3.....5
	Straw Goods, not otherwise specified, in cases D	1.....7
	Stretcher Stock, in bundles.....	4.....7
	Stucco and Stucco Work.—See Plaster of Paris.	
	Stuffed Birds, Animals, Fish, Heads, Horns, etc., boxed, O.R. released, prepaid	3-1
5	Sugar, in boxes or kegs.....	2.....5
4	“ in bags, barrels or hogsheads.....	4.....5
4	“ Lemon or Maple.....	3.....5
5	“ and Syrup, mixed, in boxes, bags, bbls., kegs or hhds., O.R. leakage.....	5.....5
	“ Grape, same as Glucose.	
5	Sugar Evaporators.—See Evaporators.	
4	Sulphate of Copper, in boxes or kegs.....	2.....5
	“ “ in bbls. or casks.....	3.....5
4	“ Iron, in boxes or kegs.....	2.....5
	“ “ in bbls. or casks.....	3.....5
5	“ Zinc, in boxes or kegs.....	2.....5
	“ “ in bbls. or casks.....	3.....5
	Sulphur, in bags, boxes or kegs.....	2.....5
	“ in barrels or casks.....	3.....5
	“ in bulk	6.....6
	Sumac.—Same as Dye Stuffs.	
5	Sundries.—Same as Merchandise.	
	Superphosphate of Lime, in barrels.....	4.....7
5	Surgical Instruments, O.R.....	1.....4
10	Syrup, in glass or jugs, boxed, O.R.....	1.....4
10	“ in pails, kegs or barrels, O.R. of leakage	3.....5
7	“ in tins, not boxed O.R.....	2.....4
	“ in tins, boxed	3.....5

Syrup of Hypophosphites, in boxes, barrels or casks.....	1
Switch Gates, Semaphores and Signal Material, Iron or Wood.....	4.....7

—T—

Talc	4.....7
Tallow.—Same as Grease.....	
Tamarinds, in jars, boxed.....	1
" in barrels	2
Tanner's Scrap, in packages.....	3.....5
Tapioca, in packages	2.....4
Tar, in kegs or buckets.....	2
" in barrels.....	4.....7
Tarpaulings	2
Tartaric Acid, in cases or barrels	1
Tea, in trunks	1½
" in chests or boxes	1.....3
" in tins, not crated, O.R.	D 1
" in tins, crated or boxed, O.R.	1.....3
Teasels.....	D 1
Telegraph and Telephone Instruments and Fixtures, O.R.	1
Telegraph Supplies, viz. :—	
Top Pins, in bags or boxes	3.....5
Cross Arms, in bundles.....	4.....7
Insulators, in bbls. or boxes.....	3.....5
Tents, Awnings and Fixtures	1
Tentpoles, in bundles	2
Terra Alba Clay, in boxes.....	3.....5
" in bbls. or casks.....	4.....10
Terra Cotta, O.R.	1
" Architectural, for building purposes, O.R.	2.....4
Terra Japonica.—Same as Japonica.....	
Theatrical Scenery, O.R.	D 1.....4
Thimble Skeins.—See Iron.....	
Thread, in boxes	1
Ticking.—Same as Cottons, Domestic.....	
Tierces, Empty.—See Empties.....	
Ties.—See Lumber.....	
Tiles, Drain or Sewer	4.....10
" Roofing	3.....7
" Encaustic or Enamelled, for floor, O.R. ...	1.....4
Tile Machines.—Same as Brick Machines.....	
Timber and Logs, under 28 ft. long. Same as Lumber.....	
" Masts and Spars, requiring two or more cars for carriage — when authorized to be taken, will be one-third more than 10th Class rates.....	
Tin Crystals, in boxes or barrels.....	1.....3
Tin Foil	1
Tin, Pig or Plate.....	3.....5
Tin Troughs.—Same as Eavetroughs.....	
Tin, Scrap, in packages	4
" " or bulk10
Tinware, loose, O. R.	D 1..... 6
" nested, O. R.	1½
" in crates, O.R.	1½
" in boxes or barrels	1.....4
" boxes or cans, small, 16 ozs. or under, packed in cases.....	2.....4

T.—Continued. U.

L. C. L. C. L.

Tinware, boxes, cans or pails, nested, crated or boxed.....	2.....	4
“ nested, solid, no other goods in same package, in crates, boxes or barrels.....	3.....	5
Tobacco, Unmanufactured, in bales.....	1.....	5
“ “ in hogshds and cases.....	3.....	5
“ Cut, in pails, loose or tied together.....	D 1.....	4
“ “ “ two or more, strapped together with metal or wood.....	1.....	4
“ “ “ in boxes or barrels.....	1.....	5
“ “ “ repacked in cases.....	2.....	5
“ Plug, in caddies, loose or tied together.....	D 1.....	4
“ “ “ two or three, strapped together with metal or wood, or firmly tied together with cord of not less than 1/4-inch diameter.....	1	
“ Plug, in caddies, four or more, strapped together with metal or wood, or firmly tied together with cord of not less than 1/4-inch diameter.....	3.....	5
“ “ “ in boxes or barrels.....	3.....	5
“ “ “ in caddies, crated.....	3.....	5
“ “ “ in skins.....	2.....	4
“ Stems, in cases or hogsheds.....	3.....	5
Toboggans, loose.....	3-1.....	6
“ “ tied in bundles.....	D 1.....	6
Tooth Picks, in boxes.....	1	
Top Pins.—See Telegraph Supplies.....	2	
Tow, in boxes, O. R.....	3.....	5
“ pressed in bales.....	3.....	5
Toys, loose or in bundles, O. R.....	4-1	
“ in trunks or crates, O. R.....	D 1	
“ in boxes, O. R.....	1	
Trays, in racks or cases.....	1	
Trees.—See Shrubbery.....		
Tricycles.—See Velocipedes.....	3.....	5
Tripe, salted or pickled.....	2	
Tripoli.....	1 1/2	
Trunks, empty or filled with Valises and Satchels, O. R.....	1 1/2	
“ C. L. common cars 34 feet long or under, minimum 14,000 lbs.....	3
“ Furniture cars, or raked platform cars, minimum weight 20,000 lbs.....	3
Trunks containing wearing apparel and personal effects will not be taken as freight unless with shipment of household goods. When they are offered for shipment, Agents will refer parties to Express Companies.		
Tubs, in nests.—See Woodenware.....		
Turned Stuff.—See Joiners' Work.....		
Turnips.—See Vegetables.....		
Turpentine.—See Spirits of Turpentine.....		
Twine.—See Cordage.....	2.....	5
Type, in boxes.....	5
Typewriting Machines or Caligraphs, boxed or crated, O. R. released.....	1	

—U—

Umbrellas, in boxes..... 1

-V-

	L C.L.	C.L.
Valises, loose, O.R.	D 1	
" in trunks, O.R.	1 1/4	
" C.L. common cars, 34 ft. long or under, minimum 14,000 lbs. per car.		3
" Furniture cars or racked platform cars, minimum 20,000 lbs. per car.		3
" in cases	1	4
Varnish, in cans when boxed, O.R.	1	
" in wood, O.R. of leakage.	2	4
This freight must not be taken for shipment by water.		
Vaseline, in glass, O.R.	1	
" in cans, boxed	2	
Vats, Empty.—Same as Cheese Vats.		
Vegetables, Evaporated. Same as Fruits (Apples) Evaporated.		
" Green, O.R. prepaid—Beans, Beets, Cabbages, Carrots, Cauli- flowers, Cucumbers, On- ions, Parsnips, Peas, Tur- nips and Tomatoes, in bags or crates.	1	
" " in boxes or barrels.	3	
" " in packages or bulk.		8
" " not otherwise specified.	1	8
" Turnips (winter). Same as Com- mon Potatoes.		
Vehicles—At O.R. of chafing and breakage in each case, and subject to Note at foot of this article:—		
Omnibuses, Stage Coaches, 5,000 lbs. each	1	
Hearses, Waggons and Sleighs, extra large, 5,000 lbs. each	1	
2-Horse Buggies, Carriages, Hacks, Sleighs, Waggons, Express and Peddlers' Wag- gons, 3,000 lbs. each	1	
1-Horse Buggy, Carriage, or Waggon with Covered Top, 3,000 lbs. each	1	
1-Horse Carriage, Buggy, Chaise, Waggon, Express or Peddlers' Waggon, Cab, Gig, Phaeton, or Sleigh, 2,000 lbs. each.	1	
1-Horse Cariole, Calache, or Cutter, 1,000 lbs. each.	1	
1-Horse Carts, 2 Wheels, 1,000 lbs. each	1	
1-Horse—dump, coal or contractors, K. D.	1	
1-Horse Sulkies, set up, 800 lbs. each.	1	
Sulkies and Road Carts, K.D., crated or boxed	D 1	
Sulkies and Road Carts, wheels off, not crated or boxed, finished.	D 1	
" unfinished, in white.	1 1/4	
Democrat Waggons, 2-horse, set up, 3,000 lbs.	1	
" " 1-horse, set up, 2,000 lbs.	1	
" " K.D., when loaded in box cars—		
2-Seated—1,200 lbs. each	1	
3-Seated—1,500 lbs. each	1	
Lumber Waggons, Common, set up, 2,400 lbs. each.	1	
" " K. D., wheels, axles, reaches and poles sepa- rate, actual weight.		1
Farmer's Waggons, 1-Horse, set up, 2,000 lbs., each.	1	
" " 2-Horse, set up, 2,400 lbs., each.	1	

V.—Continued.

L.C.L. C.L.

Vehicles—(Continued):—

	Farmers' Waggon, K.D., wheels, axles, reaches or poles separately, actual weight...	1
3	Farmers' Waggon, Lumber Waggon, Cart and Sleighs; minimum 20,000 lbs.....	6
3	Buck-board Buggies, set up, 1,000 lbs. each...	1
4	" " K.D. and crated, wheels, shafts, etc., removed and shipped separately, actual weight	D 1
4	Bob Sleds, set up, actual weight	1½
	" " K.D., in pieces	1
	Buggies, Carriages, Cutters and Sleighs, crated (wheels, shafts, and poles taken off)...	D 1
	Buggies, Carriages, Cutters and Sleighs, (wheels, shafts and poles taken off), all completely and closely boxed	D 1
	Buggy, Carriage and Sleigh Tops (shipped separately), set up, boxed or crated....	3-1
	Buggy, Carriage and Sleigh Tops (shipped separately), K.D. flat, canvassed, crated or boxed	1½
	Sleigh and Cutter Bodies, in white, crated	D 1
8	Buggy Bodies, in white, crated.....	D 1
8	Buggy, Cutter and Sleigh Bodies, Unfinished in White, closely boxed	1
	Hose Carts or Reels, 1,500 lbs. each.....	1
	Hook and Ladder Waggon, 5,000 lbs. each...	1
	Baggage Trucks or Barrows, set up	1½
	" " " K. D.....	1
	Waggon or Cart, Tank or Sprinkling, K.D., and loaded in box cars.....	1½
	Warehouse Trucks or Barrows, set up	1½
	" " " K. D.....	1
	Wheelbarrows, set up, wood or iron	1
	" " " K.D. and nested.....	3
	" " " common in white, wheels off, trays nested (C.L., minimum 20,000 lbs.).....	3.....6
NOTE.—The Classification as above, at actual weight, applies to the complete Vehicle or Vehicles, including wheels, shafts, poles, running gear, etc. When finished Vehicles are shipped without the wheels, running gear, etc., they will be charged fifty per cent. over the rates applying to complete Vehicles.		
	Children's Carriages, set up, loose.....	4-1
	" " " set up, crated or boxed..	3-1
	" " " handles, wheels, etc., detached and tied together, canvassed....	3-1
	" " " K.D. and crated.....	D 1
	" " " K.D. and boxed.....	1
	" " Carriage Wheels and Handles, shipped separately, in bundles or crates.....	D 1
	" " Bicycles and Tricycles, K.D., boxed or crated.....	1
	" " Bicycles and Tricycles.....	3-1
	" " " " crated or boxed	D 1
	" " Sleigh or Sled Runners (iron)	2
	" " Carriage Wheels and Handles, in bundles or crates.....	1

V.—Continued. W. L.C.L. C.L.

Vehicles—(Continued):—

Children's Carriage Bodies, Wicker or Willow, nested.....	D 1
Children's Sleds or Sleighs, set up, loose or in bundles.....	D 1
Children's Sleds or Sleighs, crated or boxed.....	1
“ Express Waggon, set up.....	D 1
“ Express Waggon, nested and racked, wheels separate.....	1½
“ Express Waggon, K.D. and boxed.....	1
Velocipedes—Bicycles and Tricycles.....	D 1
“ “ “ crated.....	1½
“ “ “ closely boxed.....	1
Velocipedes, Children's.....	4-1
Vehicles, all kinds, C. L. unless otherwise specified, common cars 34 feet long or under, minimum 12,000 lbs.....	4
“ Furniture cars, or racked platform cars, minimum 20,000 lbs.....	4
NOTE.—Above estimated weights are for Vehicles not too large to be loaded in an ordinary box car. Any single Vehicle too large to go into an ordinary box car, and necessitating a platform car for carriage, will not be taken at less than 5,000 lbs.....	
Veneering, Foreign, in boxes.....	1.....3
“ Native.....	3.....7
Venison, prepaid, O. R.....	1.....4
Vermicelli, in boxes.....	2
Vinegar, in demijohns, O. R.....	1.....3
Vinegar, not otherwise specified.—Same rates and conditions as Ale.....	
Vinegar Shavings, in bales.....	2.....5
Vitriol, Blue.—See Blue Stone.	
Vitriol, Oil of.—Same rates and conditions as Acids.	

—W—

Wadding, in bales or cases.....	1
Warp, in bundles or bags.....	1
“ “ in boxes, or pressed in bales.....	2.....4
Warp Beams, Empty, not boxed.....	D 1
“ “ “ boxed.....	1
“ “ “ Wrapped with Warp, not boxed, O. R.....	D 1.....4
“ “ “ “ “ crated or boxed.....	1.....4
“ “ “ Empty, returned from original consignee to original shipper. Same as returned empties.	
Washboards, Zinc and Wood.....	2.....5
Washing and Wringing Machines, set up, not boxed.....	1½.....5
“ “ “ “ “ boxed or crated.....	2.....5
Washing Powders.—See Soda.	
Water Lime.—See Cement.	
Water Pipe.—See Iron.	
Waterwheels, Iron.—See Iron.	
Wax, in boxes or barrels.....	1
“ Paraffine.—See Paraffine Wax.	
Weights.—See Scales.	
Well Augers, or Boring Machines, set up.....	1½.....6
“ “ “ “ “ K.D. in pieces.....	1.....6
“ “ “ “ “ K.D. and boxed.....	2.....6

	Whalebone.....	1
	Wheat.—See Grain.	
	Wheat, Cracked.—See Cereals.	
	Wheelbarrows.—See Vehicles.	
	Whips, in bundles.....	3-1
	" in boxes.....	1
	Whisky.—See Liquors.	
	White Lead.—See Leads.	
	Whiting, in boxes, bbls. or casks.....	3.....5
	Wicker Work, not otherwise specified.....	4-1
	Wicking.....	1
	Willow Ware or Work, not otherwise specified.....	4-1
	" Reeds.—See Oziers.	
	Window Frames.—See Joiners' Work.	
.....4	" Shades and Curtains, boxed.....	1
.....4	" " mounted on rollers, complete, boxed.....	3
	Windmills, K.D., in bbls.....	2.....5
	" Towers K.D., in bbls., O.R.....	2.....5
	Wine.—See Liquors.	
	Wire, Fine, in boxes.....	2.....4
	" Barb, Fence, and Telegraph, in coil.....	4.....5
.....3	" Wire Fencing and Staples shipped by manufacturers in full earloads, for fence construction only.....	5
.....7	" Brass or Copper, O.R.....	2.....4
.....4	" Binding, for Harvesters.....	4.....5
.....3	" Cloth.....	1.....4
	" " in rolls, O.R.....	2.....5
	" " in crates, boxes or casks, O.R.....	3.....5
2.....5	" Clothes Lines.....	3.....5
	" Common, in coil or in bbls., O.R. of wet and rust.....	3.....5
	" Coppered, galvanized or steeled, O.R. wet and rust.....	3.....5
	" Fencing or Railing.....	1.....4
	" Lath, in bundles, boxed or crated.....	3.....5
	" Mattresses—See Furniture.	
	" Picket Fencing (with wooden pickets).....	2.....5
	" " (with iron pickets).....	3.....5
1.....4	" for Fencing.—Cut in lengths and rolled in bundles.....	2.....5
1.....4	" Rat or Mouse Traps in bundles, O.R.....	1½
1.....4	" " crates or boxes O.R.....	1
1.....4	" Screens, Door or Window, in bundles, crates or boxes, O.R.....	1.....4
1.....4	Staples shipped with wire for fence construction only L.C.L. Same rates as the wire.	
2.....5	Wire Netting or Fencing, rolled in bbls.....	3.....5
1.....5	" Rope, in coil.....	3.....5
2.....5	" Insulated or covered, O.R.....	2.....4
	" Truss Hooping, in coil.....	3.....5
1.....5	" Woven Door Mats, in bundles, crates or cases.....	2.....4
2.....5	" Work, not otherwise specified.....	D 1
	Wood Board.....	3.....5
	Wood Cuts, in boxes, O.R.....	1
	Wood Fibre.....	4.....10
	Wood Pulp.....	4.....10
	Wood Spirits or Alcohol.—Same as Liquors.	
	Wood, Turned.—See Joiners' Work.	
	Woodenware—Buckets, Pails and Tubs, nested.....	1
1.....6	Woodenware—Wooden Buckets, crated.....	2
1.....6	Woodenware—Butter Plates, nested and crated.....	2
2.....6	Woodenware—Wooden or Fibre Buckets or Tubs, nested.....	1

W.—Continued. Y. Z. L.C.L. C.L.

Woodenware, not otherwise specified	1
“ all kinds, including Washboards and Clothes Pins, C. L. in com- mon cars 34 ft. long or under, minimum 14,000 lbs.4
Woodenware, in furniture cars, or racked plat- form cars, minimum 20,000 lbs.4
Wool, Domestic, in sacks	1.....5
“ Compressed, in bales	3.....5
Woollen Goods	1
Wool Waste.—Same as Cotton Waste.	
Wringing Machines—See Washing Machines.	

—Y—

Yarn, in bundles or bags	1
“ in boxes, or pressed in bales	2.....4
Yeast, liquid, in kegs or barrels	1
“ Powder or Cakes, in boxes or barrels	2.....4

—Z—

Zinc, in Sheet or Rolls, in bundles	2.....5
“ “ “ in casks	3.....5
“ Slabs or Pigs	3.....5
“ Scrap	4.....10

.....4
.....4

.....6
.....6
.....5
.....10

.....8
.....8
.....5
.....10

TABLE OF ESTIMATED WEIGHTS—Continued.

	Lbs.
Lime, per bushel.....	75
Oil, Petroleum, in bulk, in tank cars, per imperial gallon ..	8
Onions, per bushel.....	56
Potatoes, Common, per bbl.....	180
“ “ per bushel	60
Salt, per bushel.....	60
Sand, per cubic yard.....	3,000
Seed, Blue Grass, per bushel	14
“ Clover, “ “	60
“ Flax, “ “	56
“ Hemp, “ “	44
“ Hungarian, “ “	45
“ Millet, “ “	45
“ Timothy, “ “	45
Stone, Cobble, per cord of 128 feet.....	13,000
“ “ per toise of 216 feet	22,000
“ Quarried Rubble, Lime Stone, per sq. yard .	2,000
“ “ Free Stone, per sq. yard .	1,800
“ Granite, dressed, per cubic foot.....	166
“ Limestone, “ “ “	170
“ Marble, “ “ “	170
“ Sand, or Free, “ “ “	150
“ Slate, “ “ “	170
“ Quartz, per cubic foot	166
Turnips, per bushel.....	56

CORDWOOD.

	Green.	Dry.
	Lbs.	Lbs.
Hickory, per cord of 128 ft.....	5,000	4,000
Beech and Maple, “ “	4,500	3,750
Poplar “ “	5,000	4,000
Pine “ “	3,500	2,500
Hemlock, “ “	4,000	3,000
Tamarac. “ “	5,000	4,000

STAVE BOLTS.

	Lbs.
Oak, green, per cord.....	5,300
Ash and Elm, “ “	4,600
Maple, “ “	4,500

“Dry” Cordwood should be cut and piled at least 6 months.

To ascertain contents of a car of Cordwood or Stave Bolts:—Multiply the length, breadth, and height (in feet) together, and divide by 128.

Thus:—Car 30 ft. long, 3 ft. 6 in. high, 8 ft. wide:—

$$30 \text{ ft.} \times 3 \text{ ft. 6 in.} \times 8 \text{ ft.} = 840 \div 128 = 6.56 \text{ cords.}$$

ALLOWANCES IN WEIGHT FOR LININGS AND RACKS.

When computing weights on basis of marked tare, the following deductions should be made from scale weights, when cars are lined or racked:—(for extra tare of car)—

On box cars loaded with perishable property, when lined by shipper, 1,500 lbs.

On flat and gondola cars, when “racked,” loaded with bark—for racks, 1,500 lbs.

Cars loaded with agricultural implements, vehicles or stoves—the weight of the rack or lumber used, but not more than 1,500 lbs. for platform and 1,000 lbs. for box cars.

No allowances will be made for racks or stakes used on cars loaded with lumber, for grain doors, or for boards in doors of cars loaded with bulk freights.

TABLE OF ESTIMATED WEIGHTS—Continued.

LUMBER, ETC.	Green. Lbs.	Partly Seasoned. Lbs.	Dry. Lbs.
White Pine, White Wood, Bass- wood, per 1,000 feet.	3,500	3,000	2,700
Butternut, Chestnut, Red Pine, Norway or Yellow Pine, Hem- lock, Spruce, per 1,000 feet.	4,000	3,500	3,000
Ash, Elm, Maple, Cherry, per 1,000 feet.	4,500	4,000	3,500
Oak, Walnut Hickory, Birch, Beech, per 1,000 feet.	5,000	4,500	4,000
Shingles (18-inch), per 1,000.	375	350	325
" (16-inch), per 1,000.	350	325	300
Lath, per 1,000.	600	525	450
Bark, per cord.	3,500	3,000	2,400
Staves, finished, for Oil, Pork, and Beef Barrels, per 1,000.	3,750	3,375	3,000
Staves, sawed, unfinished, for Oil, Pork, and Beef Barrels, per 1,000.	4,375	3,925	3,500
Staves, rough, for Oil, Pork, and Beef Barrels, per 1,000.	5,000	4,500	4,000
Staves, manufactured, for Flour Barrels, per 1,000.	1,250	1,125	1,000
Cedar Posts, or Bolts, for Block Paving, per cord.	3,500	3,000	2,500
Shingle Bolts, per cord.	3,500	3,000	2,500
Slabs—Hardwood, per cord.	5,000	4,000	3,000
Slabs—Pine, Spruce and Hemlock, per cord.	4,000	3,000	2,400
Telegraph Poles, per cord.	4,000	3,500	3,000
Ties—Hemlock, Pine Spruce, Tamarac, each about.	160	150	130
Ties—Cedar, Sawn Pine, each about.	140	120	100
Hoops, Hoop Poles, Hop Poles, per cord.	3,500	3,250	3,000

Above estimates are for "Dry Lumber," cut and piled 4 months or over; "Part Seasoned," cut and piled at least 2 months, and all under 2 months cut is "Green."

To find contents in inch measure of a car of Lumber multiply the length in feet, the width in feet, and the height in inches together, the product will give the number of feet, inch measure.

Thus:—Car 14 ft. long, 8 ft. wide, 60 in. high:—
 $14 \times 8 \times 60 = 6,720$ feet.

Allowance should be made for waste space (if any) between the boards.

CEDAR POSTS

The following quantities of cedar posts, 9 feet long, are estimated to weigh 24,000 lbs.:

2½ feet ear.	4 ft. 9 in. high
30 " "	4 ft. 6 in. "
32 " "	4 ft. 3 in. "
33 " "	4 ft. 0 in. "
34 " "	3 ft. 10 in. "

GRAIN IN BULK.

The quantity in a car can be ascertained, with sufficient accuracy, by multiplying the internal length and breadth of the car together, and then by the height of the grain. Multiply this product by 1728 (number of inches in a square foot), and divide by 2150 (number of square inches in a bushel).

Thus:—Car 27 ft. 6 in. \times 8 ft. 7½ in. \times 2 ft. 1 in. = 494 ft. 1 in. 8 pts. Multiply by 1728, and \div 2150 = 400 nearly.

ROUND TIMBER.

1st. When all the sizes are in feet, multiply the length by the SQUARE of one-quarter of the mean girth, and the product will give the volume in cubic feet.

2nd. When the length is in feet and the girth is in inches, multiply as above, and divide by 144.

3rd. When all the dimensions are in inches, multiply as above, and divide by 1728.

Thus:—50 ft. long—girths 31.5 and 62.9 inches.

$$50 \times \left(\frac{31.5 + 62.9}{2} \div 4 \right)^2 = 50 \times 11.8^2 = 6962, \text{ and } \frac{6962}{144} = 48.347 \text{ feet.}$$

$$50 \times \frac{31.5 + 62.9 + 2^2}{16} \div 144 = \frac{111392}{16} \div 144 = 48.347 \text{ feet.}$$

The mean girth of Round Timber may be obtained by taking the circumference at both ends and in the centre, adding them together, and dividing by 3.

The girth of Spars should be arrived at by taking their diameter at one-third of their length from the abut or large end.

SQUARE TIMBER.

1st. When all the dimensions are in feet, multiply the product of the breadth by the depth, by the length, and the product will give the volume in cubic feet.

2nd. When one of the dimensions is in inches, and the other dimensions are in feet, multiply as above and divide by 12.

3rd. When two of the dimensions are in inches, and the other dimension in feet, multiply as above and divide by 144.

Thus: 20 ft. long and 15 in. square:— $15 \times 15 \times 20 = 4500$, and $4500 \div 144 = 31.25$ cubic feet.

The following are found to be average weights of Round and Square Timber:—

White Pine.....	48 lbs. per cubic foot,
Hemlock, Spruce, Red Pine.....	55 " " "
Ash, Elm, Maple, Cherry, Birch,	
Beech	60 " " "
Oak, Hickory.....	65 " " "

ent
nd
ght
per
150

ft.
400

rth
th,
bic

in

ply

347

et.

by
he
3.
sir
ut

he
th,
et.
he
nd

nd
ve

00,

nd

ot,

