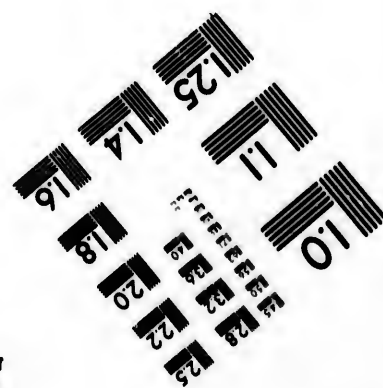
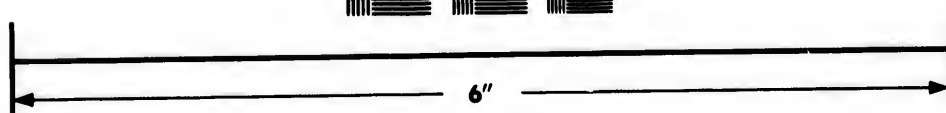
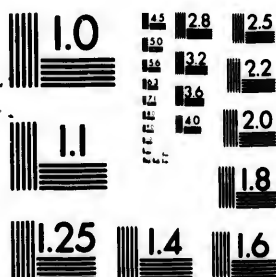


IMAGE EVALUATION TEST TARGET (MT-3)



Photographic
Sciences
Corporation

23 WEST MAIN STREET
WEBSTER, N.Y. 14580
(716) 872-4503

**CIHM/ICMH
Microfiche
Series.**

**CIHM/ICMH
Collection de
microfiches.**



Canadian Institute for Historical Microreproductions / Institut canadien de microreproductions historiques

© 1984

Technical and Bibliographic Notes/Notes techniques et bibliographiques

The Institute has attempted to obtain the best original copy available for filming. Features of this copy which may be bibliographically unique, which may alter any of the images in the reproduction, or which may significantly change the usual method of filming, are checked below.

L'Institut a microfilmé le meilleur exemplaire qu'il lui a été possible de se procurer. Les détails de cet exemplaire qui sont peut-être uniques du point de vue bibliographique, qui peuvent modifier une image reproduite, ou qui peuvent exiger une modification dans la méthode normale de filmage sont indiqués ci-dessous.

- ☐ Coloured covers/
Couverture de couleur
- ☐ Covers damaged/
Couverture endommagée
- ☐ Covers restored and/or laminated/
Couverture restaurée et/ou pelliculée
- ☐ Cover title missing/
Le titre de couverture manque
- ☐ Coloured maps/
Cartes géographiques en couleur
- ☐ Coloured ink (i.e. other than blue or black)/
Encre de couleur (i.e. autre que bleue ou noire)
- ☐ Coloured plates and/or illustrations/
Planches et/ou illustrations en couleur
- ☐ Bound with other material/
Relié avec d'autres documents
- ☐ Tight binding may cause shadows or distortion along interior margin/
La reliure serrée peut causer de l'ombre ou de la distortion le long de la marge intérieure
- ☐ Blank leaves added during restoration may appear within the text. Whenever possible, these have been omitted from filming/
Il se peut que certaines pages blanches ajoutées lors d'une restauration apparaissent dans le texte, mais, lorsque cela était possible, ces pages n'ont pas été filmées.
- ☐ Additional comments:/
Commentaires supplémentaires:

- ☐ Coloured pages/
Pages de couleur
- ☐ Pages damaged/
Pages endommagées
- ☐ Pages restored and/or laminated/
Pages restaurées et/ou pelliculées
- ☒ Pages discoloured, stained or foxed/
Pages décolorées, tachetées ou piquées
- ☐ Pages detached/
Pages détachées
- ☒ Showthrough/
Transparence
- ☐ Quality of print varies/
Qualité inégale de l'impression
- ☐ Includes supplementary material/
Comprend du matériel supplémentaire
- ☐ Only edition available/
Seule édition disponible
- ☐ Pages wholly or partially obscured by errata slips, tissues, etc., have been refilmed to ensure the best possible image/
Les pages totalement ou partiellement obscurcies par un feuillet d'errata, une pelure, etc., ont été filmées à nouveau de façon à obtenir la meilleure image possible.

This item is filmed at the reduction ratio checked below/
Ce document est filmé au taux de réduction indiqué ci-dessous.

10X	14X	18X	22X	26X	30X
<input type="checkbox"/>	<input type="checkbox"/>	<input type="checkbox"/>	<input checked="" type="checkbox"/>	<input type="checkbox"/>	<input type="checkbox"/>
12X	16X	20X	24X	28X	32X

The copy filmed here has been reproduced thanks to the generosity of:

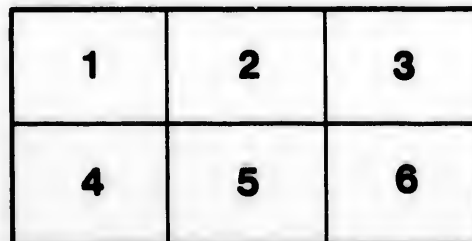
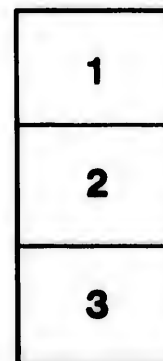
Seminary of Quebec
Library

The images appearing here are the best quality possible considering the condition and legibility of the original copy and in keeping with the filming contract specifications.

Original copies in printed paper covers are filmed beginning with the front cover and ending on the last page with a printed or illustrated impression, or the back cover when appropriate. All other original copies are filmed beginning on the first page with a printed or illustrated impression, and ending on the last page with a printed or illustrated impression.

The last recorded frame on each microfiche shall contain the symbol ➡ (meaning "CONTINUED"), or the symbol ▼ (meaning "END"), whichever applies.

Maps, plates, charts, etc., may be filmed at different reduction ratios. Those too large to be entirely included in one exposure are filmed beginning in the upper left hand corner, left to right and top to bottom, as many frames as required. The following diagrams illustrate the method:



L'exemplaire filmé fut reproduit grâce à la générosité de:

Séminaire de Québec
Bibliothèque

Les images suivantes ont été reproduites avec le plus grand soin, compte tenu de la condition et de la netteté de l'exemplaire filmé, et en conformité avec les conditions du contrat de filmage.

Les exemplaires originaux dont la couverture en papier est imprimée sont filmés en commençant par le premier plat et en terminant soit par la dernière page qui comporte une empreinte d'impression ou d'illustration, soit par le second plat, selon le cas. Tous les autres exemplaires originaux sont filmés en commençant par la première page qui comporte une empreinte d'impression ou d'illustration et en terminant par la dernière page qui comporte une telle empreinte.

Un des symboles suivants apparaîtra sur la dernière image de chaque microfiche, selon le cas: le symbole ➡ signifie "A SUIVRE", le symbole ▼ signifie "FIN".

Les cartes, planches, tableaux, etc., peuvent être filmés à des taux de réduction différents. Lorsque le document est trop grand pour être reproduit en un seul cliché, il est filmé à partir de l'angle supérieur gauche, de gauche à droite, et de haut en bas, en prenant le nombre d'images nécessaire. Les diagrammes suivants illustrent la méthode.

errata
l to
t
e pelure,
on à

280 Hist. du Bas Can. N° 9



DESCRIPTION

OF

THE MINING PROPERTY

OF

P. M. PARTRIDGE, Esq.,

OF QUEBEC,

SITUATED IN THE TOWNSHIP OF WOLFESTOWN,

COUNTY OF WOLFE,

ST. FRANCIS GOLD MINING DIVISION,



ACCOMPANIED BY

NOTE AND SKETCH FROM SIR W. E. LOGAN, F. R. S.,

PROVINCIAL GEOLOGIST;

AND REPORT FROM HERBERT WILLIAMS, Esq.,

MINING ENGINEER,

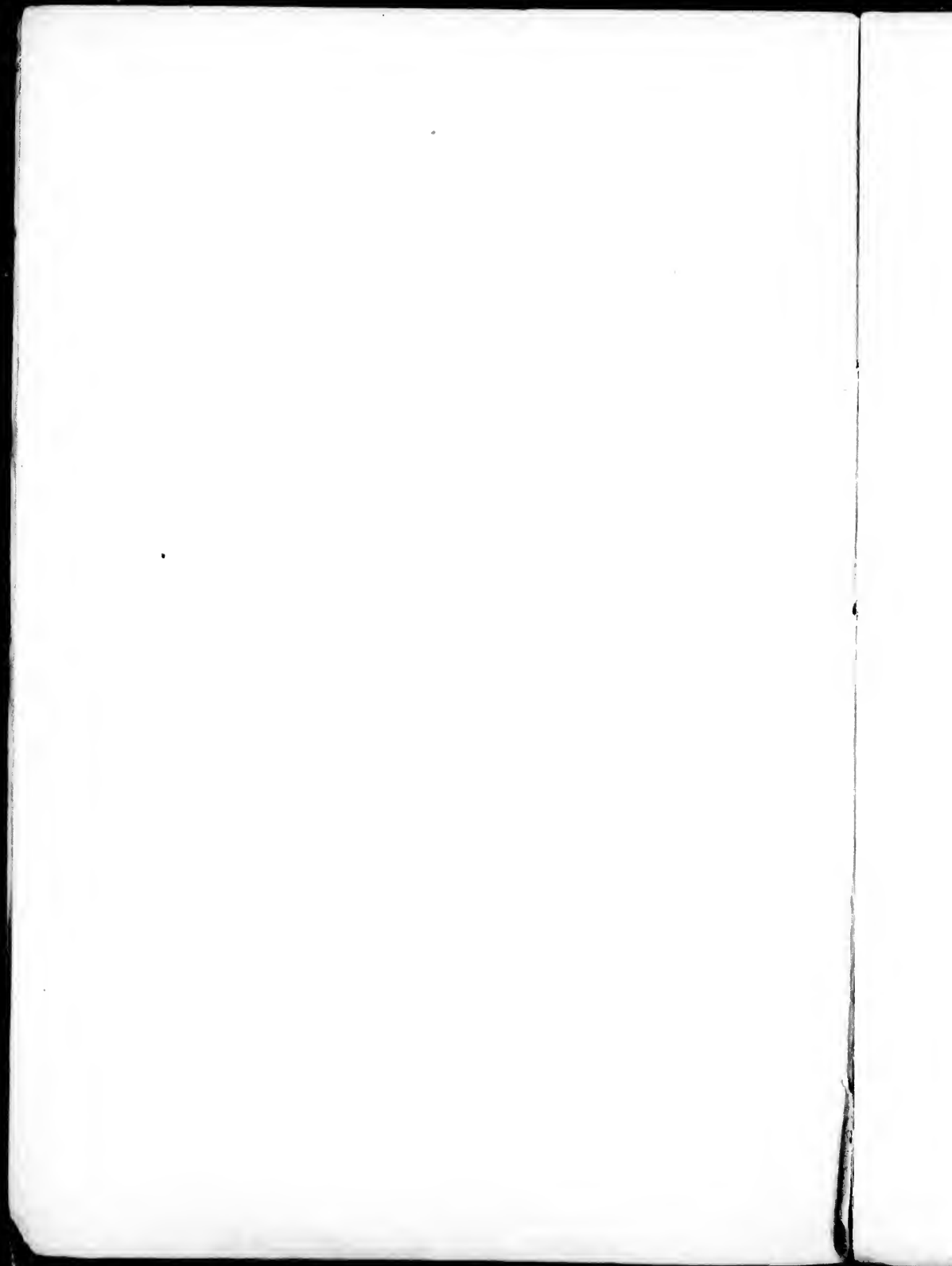
SUPERINTENDENT OF THE HARVEY HILL MINES, &C.

QUEBEC :

PRINTED BY AUG. COTÉ & C°

1865.

Le Séminaire de Québec,
rue de l'Université,
Québec, QUE.





DESCRIPTION OF THE MINING PROPERTY.

The property is situate in the centre of the Gold and Copper bearing District of Lower Canada, and in the Township of Wolfestown, County of Wolfe, and St. Francis Gold Mining Division.

It consists of the Fee Simple of 2,700 acres, and the mining rights of 300 acres of land, forming a block of 3,000 acres, which with the usual allowance for highways make a total of 3,150 acres, or nearly 5 square miles. The whole of this Property is FREE OF THE ROYALTY ON COPPER imposed by the Canadian Government on recent sales of Copper Lands. It is in the immediate vicinity of the Henneker Mine which lies on the south-west, partly in Wolfestown, there being only one entire lot between the block and the lot on which the mine is situate. On the other hand, the Viger Mine, and MacCraw Mine, lie to the north-east in Chester.

The HENNEKER MINE is worked by the British American Land Company, and although as yet not very extensively, about 100 tons of ore have been turned out which has been pronounced by Sir W. E. Logan, our Provincial Geologist, who is celebrated for his scientific knowledge, as well as for the great caution of his testimony (which is reliable when given) to be a rich ore.—Geology of Canada, 1863, page 733.

The assay of this ore, as prepared by the Crushing Mill at the Mine, and by washing, has produced at the Ascot Smelting Works 36 $\frac{1}{2}$ per cent of copper.

The Viger Mine, in Chester, is also being vigorously worked and splendid ore got out.

The property is from 12 to 14 miles distant from the Grand Trunk Railway, with which it is connected by good Public Roads. It is surrounded by Mines on all sides, in Ham, Garthby, Ireland, Halifax, and Chester. It lies in the midst of populous Townships, and Wolfestown itself had at last Census, in 1861, a population of 1422 souls, which has largely increased within the last two years, owing in part to the demand for labor at the several Mining Works being carried on, and partly to the ordinary increase of settlement.

The chef-lieu or County Town of the United Counties of Drummond and Arthabaska is only distant about 12 miles at Arthabaskaville. This County Town has a population of 744 souls, a Court House built of brick, and a Jail of stone and brick, both very large buildings. It has also a Church and two public schools. The village of Victoriaville, at the Grand Trunk Railway Depot, is distant from the County Town about 2 $\frac{1}{2}$ miles, and contains 600 souls. The Parish and Villages united, have a population of 17,600 souls. There is also a Church at about 2 $\frac{1}{2}$ miles distance from the property in Ham, and two other Churches in Chester, one, at the Village of Ste. Hélène, in Chester East, distant about 3 $\frac{1}{2}$ miles, the other at the Village of St. Paul, in Chester West, distant about 5 miles. There is also a Church in Wolfestown itself, and the population of the Village is about 150 souls:

The East Branch of the River Nicolet, into which several streams traversing the property discharge themselves, offers a transit by water-carriage for the ore in the spring and fall, by means of large flat-bottomed Scows to the Grand Trunk Railway in Stanfold, and J Pennoyer, Esquire, the Surveyor and Engineer of the British American Land Company, is of opinion that this mode will be the most economical. The Scows can be built on the Property. Thus there is a choice of two modes of transit to the Railway.

The value of the Property as farming land may be safely put down at \$6 per acre, which for the 2,700 acres in Fee-simple would give \$16,200. This value must increase year after year, and on the banks of the River Nicolet a considerable Town will grow up. The value of the Timber and of the splendid water power on the Property are spoken of in the Report of Herbert Williams, Esquire, Mining Engineer, Superintendent of the Harvey Hill Mines. Attention to Mr. Williams' Report (given below) is respectfully asked. It will be seen he states *« that he has the fullest belief that by judicious and careful exploration copper ore will be found in the property in sufficient quantities to render its extraction remunerative and profitable. »*

Since Mr. Williams' visit to the property the proprietor has had a cursory exploration for copper made by a non-professional man, which resulted in the copper bearing rocks being found to traverse the property, and in the yellow sulphuret of copper and galena being found in the dolomite, and also in a mixture of carbonate of lime and quartz; the green carbonate and grey copper were found in the chlorite.

The result of this cursory exploration accompanied by a Plan was submitted to our eminent Provincial Geologist, Sir William E. Logan, who more than verified its correctness, as will be seen from his note below, and also from the Sketch or Plan showing the Geological formation, and how the copper bearing rocks, continuing on the strike of the Henneker Mine, traverse the property.

NOTE FROM SIR W. E. LOGAN, F. R. S., PROVINCIAL
GEOLOGIST.

« MONTREAL, 2nd July, 1864.

« MY DEAR SIR,

« I send you a pencil sketch to show you how the dolomite runs through your lots in Wolfestown, being those lots marked by O. Copper occurs in the dolomite in several places, little or none in the black slates, and there are occasional indications of it in the chloritic slates above the dolomite and in the chloritic Nacreous and quartzose slates beneath the black slates. Many thanks for the tracing with which you furnished me.

« I am, my dear Sir,

« Very truly yours,

« W. E. LOGAN.

P. M. PARTRIDGE, ESQ.,

« Crown Land Office, Quebec. »

REPORT OF HERBERT WILLIAMS, ESQUIRE,
MINING ENGINEER.

« *Harvey Hill Copper Mines,*
« *Leeds, Megantic, C. E.*

« SUPERINTENDENT'S OFFICE, 20TH DECR., 1864.

« P. M. PARTRIDGE, ESQ.,
« *Quebec.*

« DEAR SIR,—Having, in the autumn of 1862, visited your property in the Township of Wolfestown, comprising lots No. 1, 3, 4, 5 and 7 in the seventh range, 2, 3, 5 and 6 in the 8th range, and 1, 2, 4, 5, 6 and 7 in the 9th range of the said Township, the following are the notes made by me at the time of my survey, viz:—

« These properties lie in the run of the second Synclinal of
« Copper bearing rocks of the Eastern Townships of Canada,
« the dolomitic limestone which carries the Variegated,
« Vitreous, and Yellow Sulphurets of Copper at the Ham Mine,
« which is situate at a comparatively short distance, has been
« found on several of the lots, but as no explorations have, up
« to the present time been made on the property, little can be
« said of its value, though I have the fullest belief that by
« judicious and careful exploration Copper Ore will be found
« in the properties in sufficient quantity to render its extrac-
« tion remunerative and profitable. Besides the dolomitic
« limestone, which appears to be under laid by Black Slates,
« the out crops of the Chloritic Nacreous and Quartzose Slates
« are to be seen in several places, and these in several locali-
« ties in this Synclinal, are found to carry Copper in sufficient
« quantities to pay fair profits on working as at the Harvey
« Hill Copper Mines.»

« There are several excellent water powers on the property that may be regarded as important adjuncts for the purposes of crushing, stamping and dressing the ores.

« The property is well covered with Timber suited to building purposes, and an ample supply of fuel may be confidently relied upon for many years to come.

« This section of the Country lies within the limits of the Gold bearing region as laid down by our eminent Provincial Geologist, Sir W. E. Logan.

« The property is easily approached by good roads, and distant from the Grand Trunk Railway about 12 to 14 miles.

« I am, Dear Sir,

« Your Obedient Servant,

« HERBERT WILLIAMS. »

The Proprietor deems it unnecessary to add further evidence of the eligibility of the Property as affording the bases for several legitimate mining enterprises, but would add that it is the opinion of several eminent Professional men that the quartz, the talcose and the black slates or shale contain gold ; moreover practical men who have had much experience up the Chaudiere and its Tributaries last summer, are positive in the opinion that gold will be found in the Rivers and Streams on the property, if properly searched for next spring. The black sand mixed with rather large garnets, in which is found the alluvial gold of Eastern Canada, has been discovered in several of the small streams.

P. M. PARTRIDGE,
PROPRIETOR.

Quebec, Canada East, }
March, 1865. }

GE.
DIETOR.

SKETCH
of Part of
WOLFSTOWN
Accompanying Note of Sir W. E. Logan F.R.S.
Provincial Geologist.



ID
RSET

INVE

ELAND
VINE

ATFORD

