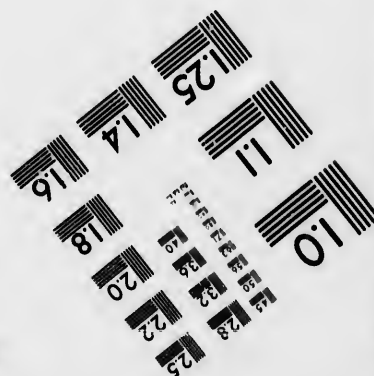
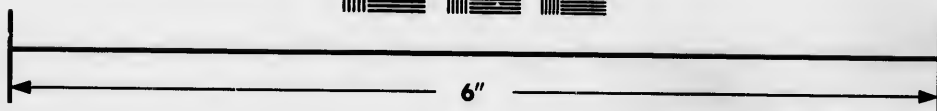
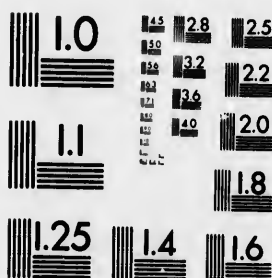


IMAGE EVALUATION TEST TARGET (MT-3)



Photographic
Sciences
Corporation

23 WEST MAIN STREET
WEBSTER, N.Y. 14580
(716) 872-4503

**CIHM
Microfiche
Series
(Monographs)**

**ICMH
Collection de
microfiches
(monographies)**



Canadian Institute for Historical Microreproductions / Institut canadien de microreproductions historiques

© 1993

Technical and Bibliographic Notes / Notes techniques et bibliographiques

The Institute has attempted to obtain the best original copy available for filming. Features of this copy which may be bibliographically unique, which may alter any of the images in the reproduction, or which may significantly change the usual method of filming, are checked below.

L'Institut a microfilmé le meilleur exemplaire qu'il lui a été possible de se procurer. Les détails de cet exemplaire qui sont peut-être uniques du point de vue bibliographique, qui peuvent modifier une image reproduite, ou qui peuvent exiger une modification dans la méthode normale de filmage sont indiqués ci-dessous.

☒ Coloured covers/
Couverture de couleur

☐ Coloured pages/
Pages de couleur

☐ Covers damaged/
Couverture endommagée

☐ Pages damaged/
Pages endommagées

☐ Covers restored and/or laminated/
Couverture restaurée et/ou pelliculée

☐ Pages restored and/or laminated/
Pages restaurées et/ou pelliculées

☐ Cover title missing/
Le titre de couverture manque

☒ Pages discoloured, stained or foxed/
Pages décolorées, tachetées ou piquées

☐ Coloured maps/
Cartes géographiques en couleur

☐ Pages detached/
Pages détachées

☐ Coloured ink (i.e. other than blue or black)/
Encre de couleur (i.e. autre que bleue ou noire)

☒ Show through/
Transparence

☐ Coloured plates and/or illustrations/
Planches et/ou illustrations en couleur

☐ Quality of print varies/
Qualité inégale de l'impression

☐ Bound with other material/
Relié avec d'autres documents

☐ Continuous pagination/
Pagination continue

☐ Tight binding may cause shadows or distortion along interior margin/
La reliure serrée peut causer de l'ombre ou de la distorsion le long de la marge intérieure

☐ Includes index(es)/
Comprend un (des) index

☐ Blank leaves added during restoration may appear within the text. Whenever possible, these have been omitted from filming/
Il se peut que certaines pages blanches ajoutées lors d'une restauration apparaissent dans le texte, mais, lorsque cela était possible, ces pages n'ont pas été filmées.

Title on header taken from:/
Le titre de l'en-tête provient:

☐ Title page of issue/
Page de titre de la livraison

☐ Caption of issue/
Titre de départ de la livraison

☐ Masthead/
Générique (périodiques) de la livraison

☐ Additional comments:/
Commentaires supplémentaires:

This item is filmed at the reduction ratio checked below/
Ce document est filmé au taux de réduction indiqué ci-dessous.

10X	14X	18X	22X	26X	30X
<input type="checkbox"/>	<input type="checkbox"/>	<input type="checkbox"/>	<input checked="" type="checkbox"/>	<input type="checkbox"/>	<input type="checkbox"/>
12X	16X	20X	24X	28X	32X

The copy filmed here has been reproduced thanks to the generosity of:

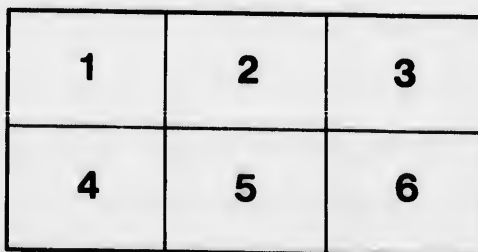
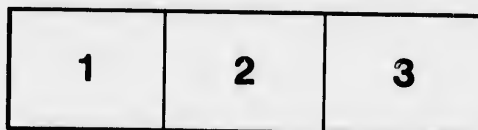
National Library of Canada

The images appearing here are the best quality possible considering the condition and legibility of the original copy and in keeping with the filming contract specifications.

Original copies in printed paper covers are filmed beginning with the front cover and ending on the last page with a printed or illustrated impression, or the back cover when appropriate. All other original copies are filmed beginning on the first page with a printed or illustrated impression, and ending on the last page with a printed or illustrated impression.

The last recorded frame on each microfiche shall contain the symbol ➡ (meaning "CONTINUED"), or the symbol ▼ (meaning "END"), whichever applies.

Maps, plates, charts, etc., may be filmed at different reduction ratios. Those too large to be entirely included in one exposure are filmed beginning in the upper left hand corner, left to right and top to bottom, as many frames as required. The following diagrams illustrate the method:



L'exemplaire filmé fut reproduit grâce à la générosité de:

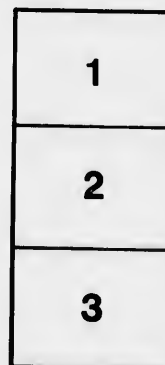
Bibliothèque nationale du Canada

Les images suivantes ont été reproduites avec le plus grand soin, compte tenu de la condition et de la netteté de l'exemplaire filmé, et en conformité avec les conditions du contrat de filmage.

Les exemplaires originaux dont la couverture en papier est imprimée sont filmés en commençant par le premier plat et en terminant soit par la dernière page qui comporte une empreinte d'impression ou d'illustration, soit par le second plat, selon le cas. Tous les autres exemplaires originaux sont filmés en commençant par la première page qui comporte une empreinte d'impression ou d'illustration et en terminant par la dernière page qui comporte une telle empreinte.

Un des symboles suivants apparaîtra sur la dernière image de chaque microfiche, selon le cas: le symbole ➡ signifie "A SUIVRE", le symbole ▼ signifie "FIN".

Les cartes, planches, tableaux, etc., peuvent être filmés à des taux de réduction différents. Lorsque le document est trop grand pour être reproduit en un seul cliché, il est filmé à partir de l'angle supérieur gauche, de gauche à droite, et de haut en bas, en prenant le nombre d'images nécessaire. Les diagrammes suivants illustrent la méthode.



12

CHECK LIST

OF THE

BIRDS OF ONTARIO

AND

CATALOGUE OF BIRDS IN THE BIOLOGICAL SECTION

OF THE

MUSEUM.

DEPARTMENT OF EDUCATION

TORONTO.

14

CHECK LIST

OF THE

BIRDS OF ONTARIO

AND

CATALOGUE OF BIRDS IN THE BIOLOGICAL SECTION

OF THE

MUSEUM.

DEPARTMENT OF EDUCATION

TORONTO.

TORONTO:

WARWICK BRO'S & RUTTER, PRINTERS, ETC., 68 AND 70 FRONT ST. WEST.
1900.

birds
Onta

given

Amer

TORO

PREFACE.

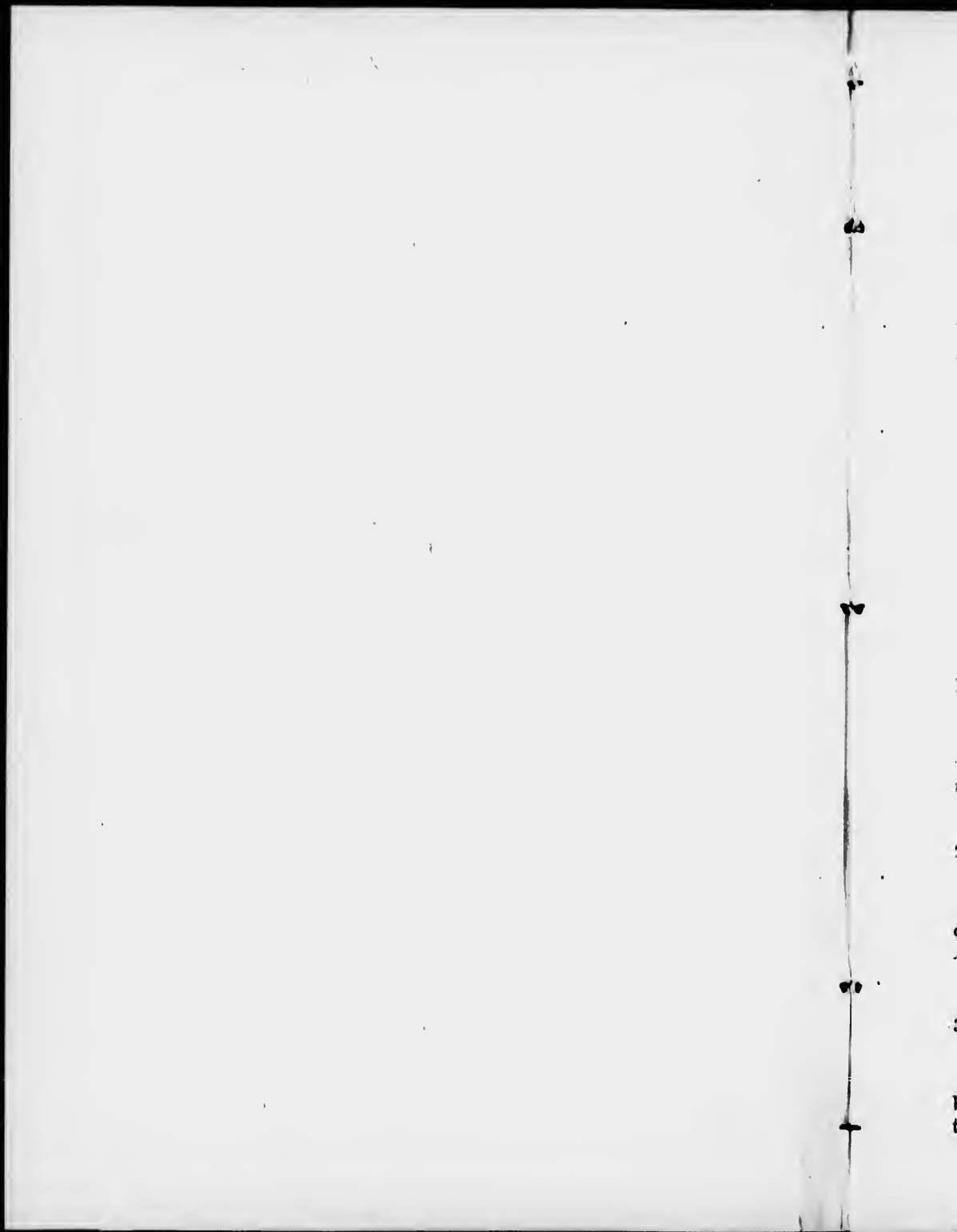
In the following Check List I have endeavored to include all the birds that have been positively known to occur in the Province of Ontario.

In cases where I have no personal knowledge of the record, I have given the authority for it.

The nomenclature adopted is that of the Check List of the American Ornithologists Union.

C. W. NASH.

TORONTO, Ontario, April 12th, 1900.



CHECK LIST
OF THE
BIRDS OF ONTARIO.

The number in the margin opposite the species corresponds with the number on the label of each specimen of that species in the Biological Section of the Museum of the Department of Education.

Species marked (*) are wanting to complete the collection.

Order PYGOPODES. Diving Birds

Suborder PODICIPEDES. Grebes.

FAMILY PODICIPIDÆ. GREBES.

GENUS COLYMBUS.

SUBGENUS COLYMBUS.

1. Holboell's Grebe.

(Colymbus holboëlli)

A regular but never a common spring and autumn visitor to the waters of southern Ontario. Probably breeds in the northern part of the Province.

SUBGENUS DYTES.

2. Horned Grebe.

(Colymbus auritus.)

Abundant on the great lakes and all large bodies of water throughout the Province in spring and autumn, breeding in the large marshes. A few remain on Lake Ontario through the winter.

GENUS PODILYMBUS.

3. Pied-billed Grebe.

(Podilymbus podiceps.)

A common summer resident of marshes all over the Province, breeding throughout its range. Arrives early in April, departs about the middle of October.

Suborder OEPPI. Loons, Etc.**FAMILY GAVIIDÆ.****GENUS GAVIA.****4. Loon.**

(*Gavia imber.*)

Common on all large bodies of water in spring and autumn, breeding about the lakes and ponds of the interior, some few remain on the great lakes all through the winter, but the bulk go south during the coldest part of the season.

***5. Black-throated Loon.**

(*Gavia arctica.*)

A very rare winter visitor.

6. Red-throated Loon.

(*Gavia lumme.*)

A common spring and autumn visitor to our waters, breeding in the far north and retiring southward as its haunts freeze up.

FAMILY ALCIDÆ. AUKS, MURRES, ETC.**SUBFAMILY ALCINÆ. AUKS AND MURRES.****GENUS URIA.****7. Brunnich's Murre.**

(*Uria lomvia.*)

An occasional visitor to Lake Ontario, it is common on the Atlantic coast.

During the winter of 1893 a large number of these birds appeared on Lake Ontario and each season since that time a few have been seen there.

GENUS ALCA.***8. Razor-billed Auk.**

(*Alca torda*)

An accidental visitor to Lake Ontario in winter.

Order LONGIPENNES. Long-winged Swimmers.**FAMILY STERCORARIIDÆ. SKUAS AND JAEGER.****GENUS STERCORARIUS.****9. Pomarine Jaeger.**

(*Stercorarius pomarinus.*)

An occasional winter visitor to the great lakes.

10. **Parasitic Jaeger.**

(*Stercorarius parasiticus.*)

An occasional spring and autumn visitor to the great lakes.

FAMILY LARIDÆ. GULLS AND TERNS.

GENUS PAGOPHILA.

11. **Ivory Gull.**

(*Pagophila alba.*)

A regular but not common winter visitor to the great lakes.

GENUS RISSA.

12. **Kittiwake**

(*Rissa tridactyla.*)

A regular but not common winter visitor to the great lakes.

GENUS LARUS.

13. **Glaucous Gull**

(*Larus glaucus.*)

A regular but not common winter visitor to the great lakes.

14. **Great Black-backed Gull.**

(*Larus marinus.*)

A regular but not abundant winter visitor to the great lakes; more frequently observed than either of the preceding species.

15. **American Herring Gull.**

(*Larus argentatus smithsonianus.*)

A very common resident, frequenting the great lakes at all seasons, but most abundant in winter.

16. **Ring-billed Gull.**

(*Larus delawarensis.*)

A common resident; like the last, most abundant in winter.

*17. **Laughing Gull.**

(*Larus atricilla.*)

An accidental visitor in summer.

18. **Franklin's Gull.**

(*Larus franklinii.*)

A rare summer visitor, occasionally straggling here from the prairie sloughs, where they are abundant.

19. Bonaparte's Gull.

(*Larus philadelphia.*)

A common spring and autumn visitor to the great lakes, arriving in April and departing at the end of November. It is probable that some breed in the northern part of the province.

SUBFAMILY STERNINÆ. TERNS.

GENUS STERNA.

SUBGENUS THALASSEUS.

20. Caspian Tern.

(*Sterna caspia.*)

A regular but not common spring and autumn visitor to the great lakes.

SUBGENUS ACTOCHELIDON.

***21. Cabot's Tern.**

(*Sterna sandvicensis aculeiflvida.*)

The capture of a specimen of this tern in the spring of 1882, at Lucknow, is recorded by Mr. McIlwraith.

SUBGENUS STERNA.

22. Forster's Tern.

(*Sterna forsteri.*)

An uncommon summer visitor, breeds throughout its range.

23. Common Tern

(*Sterna hirundo.*)

A regular summer visitor, more frequently seen in spring and autumn.

SUBGENUS STERNULA.

24. Least Tern.

(*Sterna antillarum.*)

An accidental visitor.

GENUS HYDROCHELIDON.

25. Black Tern.

(*Hydrochelidon nigra surinamensis.*)

This Tern is common in some of the large marshes throughout the Province during the summer, but it is not generally distributed. Breeds where it occurs.

Order STEGANOPODES. Totipalmate Swimmers.**FAMILY SULIDÆ. GANNETS.****GENUS SULA.****SUBGENUS DYSPORUS.****26. Gannet.**

(*Sula bassana*.)

An accidental visitor from the Atlantic coast.

FAMILY PHALACROCORACIDÆ.**GENUS PHALACROCORAX.****SUBGENUS PHALACROCORAX.****27. Cormorant.**

(*Phalacrocorax carbo*.)

An uncommon spring and autumn visitor to the larger bodies of water. Probably breeds in the northern part of the Province.

28. Double-crested Cormorant.

(*Phalacrocorax dilophus*.)

A regular but not a common spring and autumn visitor to our lakes, probably breeds about the waters of the northern part of the Province.

FAMILY PELECANIDÆ.**GENUS PELECANUS.****SUBGENUS CYRTOPELICANUS.****29. American White Pelican.**

(*Pelecanus erythrorhynchos*.)

An accidental visitor to the great lakes.

Order ANSERES. Lamellirostral Swimmers.**FAMILY ANATIDÆ. DUCKS, GEESE AND SWANS.****SUBFAMILY MERGINÆ. MERGANSERS.****GENUS MERGANSER.****30. American Merganser.**

(*Merganser americanus*.)

A common resident, breeding in the northern part of the Province and spending the winter on the open water of the lakes, and rapid rivers near our southern boundary.

These birds are very destructive to our fisheries.

31. **Red-breasted Merganser.**

(*Merganser serrator*.)

A common resident, more abundant than the last and equally destructive to fish. Breeds in the interior of the Province and winters wherever there is open water.

GENUS LOPHODYTES.

32. **Hooded Merganser.**

(*Lophodytes cucullatus*.)

A tolerably common summer resident breeding throughout the interior of the Province and retiring southward as ice forms.

SUBFAMILY ANATINÆ. RIVER DUCKS.

GENUS ANAS.

33. **Mallard.**

(*Anas boschas*.)

Common summer resident of the western part of the Province less abundant in the east, retires southward as the shallow waters it frequents become frozen over.

Breeds throughout its range.

34. **Black Duck.**

(*Anas obscura*.)

A very common summer resident, breeding in all suitable places throughout the Province.

Arrives as soon as the marshes are open and retires when they freeze up.

GENUS CHAULELASMUS.

35. **Gadwall.**

(*Chaulelasmus streperus*.)

A very rare summer resident.

GENUS MARECA.

36. **Baldpate.**

(*Mareca americana*.)

A fairly common summer resident, breeding in the interior of the Province.

Arrives in April and leaves with the first frost.

GENUS NETTION.

37. Green-winged Teal.

(*Nettion carolinensis*.)

Common summer resident, breeding in the north.

Arrives as soon as the marshes are open and remains until the early part of November.

GENUS QUERQUEDULA.

38. Blue-winged Teal.

(*Querquedula discors*.)

A common summer resident, breeding in all suitable places throughout this Province.

Arrives in April and leaves about the end of September.

GENUS SPATULA.

39. Shoveller.

(*Spatula clypeata*.)

A regular but uncommon summer resident, breeds throughout its range.

GENUS DAFILA.

40. Pintail.

(*Dafila acuta*.)

A common spring and autumn visitor to southern Ontario, occasionally breeding in the marshes about Lake Erie and probably regularly breeding in the interior of the Province.

Arrives as soon as the marshes open and leaves when they freeze up.

GENUS AIX.

41. Wood Duck.

(*Aix sponsa*.)

Formerly an abundant summer resident, breeding everywhere throughout the Province, it is still common but its numbers are decreasing.

Arrives as soon as the ice is out of the marshes, departs about the end of September.

SUBFAMILY FULIGULINÆ. SEA DUCKS.

GENUS AYTHYA.

42. Redhead.

(Aythya americana.)

A common summer resident, most abundant in southern Ontario in spring and autumn.

They breed in the marshes of the north, and the bulk of them retire to the south when their haunts are frozen over, in some seasons a considerable number spend the winter on Lake Ontario.

43 Canvas-back

(Aythya vallisneria.)

A regular but uncommon visitor to this Province, it breeds in the northwest and may perhaps sometimes do so in our northern marshes.

SUBGENUS FULIGULA.

44. American Scaup Duck.

(Aythya marila.)

The great majority of these birds are spring and autumn visitors to southern Ontario but they do not go very far north to breed and a great many spend the winter along the shores of Lake Ontario.

45 Lesser Scaup Duck.

(Aythya affinis.)

Common summer resident, breeding in the large marshes throughout the Province.

It arrives as soon as the ice moves in the spring and remains until the marshes and bays freeze up. I have not observed it during the winter.

46. Ring-necked Duck.

(Aythya collaris.)

Regular summer resident, less abundant than either of the preceding species.

GENUS CLANGULA.

47. Golden-eye Duck.

(Clangula clangula americana.)

Common winter visitor, may perhaps breed in the Northern part of the Province, as it regularly does so in Southern Manitoba.

The bulk arrive in Southern Ontario about the end of October and remain until the ice breaks up in the spring.

48. **Barrow's Golden-eye.**

(*Clangula islandica*.)

An occasional visitor in winter.

GENUS CHARITONETTA.

49. **Buffle-headed Duck.**

(*Charitonetta albeola*.)

Common spring and autumn visitor throughout the Province, breeding at some points in Southern Ontario and probably doing so regularly in the more northern portions.

They arrive as soon as the ice goes out in spring and remain in the autumn until their haunts are frozen over.

GENUS HARELDA.

50. **Long-tailed Duck.**

(*Harelda hyemalis*.)

A very abundant winter resident, arriving about the beginning of November and departing at the end of April.

GENUS HISTRIONICUS.

51. **Harlequin Duck.**

(*Histrionicus histrionicus*.)

A very rare visitor.

GENUS SOMATERIA.

SUBGENUS SOMATERIA.

52. **American Eider.**

(*Somateria dresseri*.)

An occasional winter visitor, all the specimens of this duck that have been taken here are in immature plumage so far as I have been able to learn.

SUBGENUS ERIONETTA.

53. **King Eider.**

(*Somateria spectabilis*.)

Occurring more frequently than the last, but still only an occasional winter visitor.

Adult specimens of this duck in full plumage have several times been taken on our lakes in the late autumn and early spring.

GENUS OIDEMIA.

SUBGENUS OIDEMIA.

54. **Black Scoter—(American Scoter.)**
(*Oidemia americana*.)

A regular winter resident on the great lakes, sometimes moving southward for a short time if the weather is very severe.

SUBGENUS MELANITTA.

55. **White-winged Scoter.**
(*Oidemia deglandi*.)

A common winter resident, frequenting the great lakes.

SUBGENUS PELIONETTA.

56. **Surf Scoter.**
(*Oidemia perspicillata*.)

A regular visitor to our lakes in spring and autumn, probably remaining through the winter, though I have never observed it here in the coldest part of the season.

GENUS ERISMATURA.

57. **Ruddy Duck.**
(*Erismatura jamaicensis*.)

Common in spring and autumn. Breeds from our southern boundary northward.

SUBFAMILY ANSERINÆ.

GENUS CHEN.

58. **Greater Snow Goose.**
(*Chen hyperborea nivalis*.)

A rare visitor to the Western part of this Province.

GENUS ANSER.

59. **White fronted Goose.**
(*Anser albifrons gambeli*.)

Of very rare occurrence.

Mr.
flats, the

60. **Oan**

(
A r
nearly s
unfrequ
bred in

61. **Hut**

(
An

62. **Bra**

(
A

63. **W**

Of
spring.

64. **Tr**

L
howev
Iowa,

*65. **C**

A

Mr. McIlwraith records the capture of one specimen at St. Clair flats, the only one I have heard of.

GENUS BRANTA.

60. Canada Goose.

(Branta canadensis.)

A regular spring and autumn visitor to our marshes but not nearly so abundant now as formerly. Some probably breed in the unfrequented marshes of the northern part of the Province, as they bred in Southern Manitoba before the settlement of the country.

61. Hutchin's Goose.

(Branta canadensis hutchinsii.)

An occasional spring and autumn visitor.

62. Brant.

(Branta bernicla.)

A rare visitor.

SUBFAMILY CYGNINÆ.

GENUS OLOR.

63. Whistling Swan.

(Olor columbianus.)

Of somewhat irregular occurrence, generally a few are seen in the spring.

64. Trumpeter Swan,

(Olor buccinator.)

Like the last, rarely seen now. Some few of this species may however breed in the northern part of the Province, as they do so in Iowa, Minnesota and Dakota.

Order HERODIONES. Herons, Ibises, etc.

Suborder IBIDES. Ibises, etc.

FAMILY IBIDIDÆ. IBISES.

GENUS PLEGADIS.

*65. Glossy Ibis.

(Plegadis autumnalis.)

An accidental visitor.

Mr. Mellwraith records the capture of two near Hamilton in 1857. I have not heard of any others.

Sub-order HERODII. Herons, Bitterns, etc.

FAMILY ARDEIDÆ. HERONS, BITTERNS, ETC.

SUBFAMILY BOTAURINÆ. BITTERNS.

GENUS BOTAURUS.

66. American Bittern.

(*Botaurus lentiginosus*.)

A common summer resident, breeding throughout its range in this Province.

Arrives about the middle of April, departs about the middle of October.

GENUS ARDETTA.

67. Least Bittern.

(*Ardetta exilis*.)

An abundant summer resident of the larger marshes in southern Ontario, breeding throughout its range.

68. Cory's Least Bittern.

(*Ardetta neoxena*.)

This species seems now to be a regular summer visitor to the marsh near Toronto. During the last nine years over a dozen specimens having been taken there. I have not heard of its capture in any other part of the Province.

SUBFAMILY ARDEINÆ. HERONS, ETC.

GENUS ARDEA.

SUBGENUS ARDEA.

69 Great Blue Heron.

(*Ardea herodias*.)

A common summer resident, breeding in communities in the interior of the Province.

Arrives early in April, departs about the middle of September.

SUBGENUS HERODIAS.

70. American Egret.

(*Ardea egretta*.)

An accidental visitor to our southern border.

BIRDS OF ONTARIO.

SUBGENUS GARZETTA.

71. **Snowy Heron**

(*Ardea candidissima*)

An accidental visitor to our southern border.

SUBGENUS BUTORIDES.

72. **Green Heron.**

(*Ardea virescens*.)

A regular though never a common summer resident of southern Ontario, it is not generally distributed and is more frequently found breeding in the swamps near Lake Erie than elsewhere.

GENUS NYCTICORAX.

SUBGENUS NYCTICORAX.

73. **Black-Crowned Night Heron.**

(*Nycticorax nycticorax nævius*.)

A regular and in places a common summer resident, they breed in the interior of the Province in communities.

As they are quite nocturnal in their habits they are not often observed even where they are common.

Order **PALUDICOLÆ**. Cranes, Rails, etc.

Suborder **GRUES**. Cranes.

FAMILY **GRUIDÆ**. CRANES.

GENUS **GRUS**.

74. **Whooping Crane.**

(*Grus americana*.)

Mr. McIlwraith records the capture of a specimen of this Crane in the County of Addington in September, 1871, the only one I ever heard of here.

75. **Sandhill Crane**

(*Grus mexicana*.)

An accidental visitor from the western prairies.

Suborder **RALLI**. Rails, Coots, etc

FAMILY **RALLIDÆ**. RAILS, COOTS, ETC.

SUBFAMILY **ALLINÆ**. RAILS.

GENUS RALLUS.

76. King Rail.

(Rallus elegans.)

A regular summer resident of the marshes at the western end of Lake Erie.

I have not heard of its occurrence elsewhere.

77. Virginia Rail.

(Rallus virginianus.)

An abundant summer resident of the marshes of southern Ontario, breeding throughout its range in the Province.

Arrives about the middle of April and leaves early in October.

GENUS PORZANA.

SUBGENUS PORZANA.

78. Carolina Rail.

(Porzana carolina.)

Very abundant summer resident of the marshes all over the Province, breeding throughout its range.

Arrives about the middle of April, departs about the end of October.

SUBGENUS COTURNICOPS.

79. Yellow Rail.

(Porzana noveboracensis.)

A regular but not a common summer resident of our marshes.

SUBGENUS CRECISCUS.

*80. Black Rail.

(Porzana jamaicensis.)

Very rare, probably a summer resident where it occurs.

SUBFAMILY GALLINULINÆ. GALLINULES.

GENUS IONORNIS.

81. Purple Gallinule.

(Ionornis martinica.)

Of accidental occurrence here, one was taken in the marsh on the Rouge river east of Toronto in 1892, but I know of no others.

GENUS GALLINULA.

82. **Florida Gallinule.**
(*Gallinula galeata*.)

A common summer resident of the marshes of southern Ontario, breeding throughout its range.

Arrives about the middle of April, departs towards the end of October.

SUBFAMILY FULICINÆ. COOTS.

GENUS FULICA.

83. **American Coot.**
(*Fulica americana*.)

Common spring and autumn visitor to Southern Ontario. Breeds in the north.

Order LIMICOLÆ. Shore birds.

FAMILY PHALAROPIDÆ. PHALAROPES.

GENUS CRYMOPHILUS.

84. **Red Phalarope.**
(*Crymophilus fulicarius*.)

An irregular spring and autumn visitor of rare occurrence.

GENUS PHALAROPUS.

SUBGENUS PHALAROPUS.

85. **Northern Phalarope.**
(*Phalaropus lobatus*.)

An irregular spring and autumn visitor of rare occurrence.

GENUS STEGANOPUS.

86. **Wilson's Phalarope.**
(*Steganopus tricolor*.)

An irregular spring and autumn visitor, but rather more frequently met with than either of the preceding Phalaropes.

FAMILY RECURVIROSTRIDÆ. AVOCETS, ETC.

GENUS RECURVIROSTRA.

87. **Avocet.**
(*Recurvirostra americana*.)

An accidental visitor from the western prairies.

FAMILY SCOLOPACIDÆ. SNIPES, SANDPIPERS, ETC.

GENUS PHILOHELA.

- 88 Woodcock. (*American Woodcock*)
(*Philohela minor*.)

Formerly an abundant summer resident of our swampy woods, but now becoming scarce. Breeds throughout its range.

Arrives about the end of March and departs in November, usually remaining until the first severe frost.

GENUS GALLINAGO.

- 89 Wilson's Snipe.
(*Gallinago delicata*)

Abundant in spring and autumn in Southern Ontario, the majority going north to breed. Some few, however, raise their young in all the larger marshes throughout the Province from our southern border northward.

The first arrivals in spring generally appear before the end of March, and in the autumn the last stragglers remain until the marshes freeze up.

GENUS MACRORHAMPHUS.

90. Dowitcher.
(*Macrorhamphus griseus*.)

A rather rare spring and autumn visitor.

GENUS MICROPALAMA.

91. Stilt Sandpiper.
(*Micropalama himantopus*.)

A rare visitor, most frequently met with in summer. I have taken several, most of them in July and August.

GENUS TRINGA.

SUBGENUS TRINGA.

- 92 Knot.
(*Tringa canutus*.)

In the neighbourhood of Toronto and Hamilton I have found this species abundant from the twenty-fifth of May to the end of the first week in June. In the autumn it is seldom seen. Two or three times I have taken specimens in immature plumage in August, but that is all.

SUBGENUS ARQUATELLA.

93. **Purple Sandpiper.**
(*Tringa maritima.*)

A very rare visitor from the sea coast, usually occurring late in the autumn.

SUBGENUS ACTODROMAS.

94. **Pectoral Sandpiper.** (Grass Plover.)
(*Tringa maculata.*)

A common autumn visitor to our marshes and sandbars. Not observed by me in the spring.

Arrives in July, departs about the end of October.

95. **White-rumped Sandpiper.**
(*Tringa fuscicollis.*)

Rather an uncommon species. Possibly breeding, as I have found them here from the middle of June to the middle of October.

96. **Baird's Sandpiper.**
(*Tringa bairdii.*)

A regular and not uncommon autumn visitor in the neighbourhood of Toronto and at Dundas. Not seen in spring.

Arrives in July, departs early in October.

97. **Least Sandpiper.** (Stint.)
(*Tringa minutilla.*)

Common spring and autumn visitor, arriving about the twentieth of May, departing early in September.

The bulk of these birds go north to breed, but I think some few nest throughout their range in this Province, for some few pairs are always to be found on our sandy beaches all through the summer.

SUBGENUS PELIDNA.

98. **Red-backed Sandpiper.** (Black-heart Plover.)
(*Tringa alpina pacifica.*)

A very abundant visitor in the spring, arriving about the twentieth of May and departing northward about the end of the first week in June.

In the autumn they are much less abundant, the bulk going south by another route. The first arrive early in October and by the end of the first week in November the last has gone.

GENUS EREUNETES.

99. **Semipalmated Sandpiper.** (Stint.)
(*Ereunetes pusillus*.)

Very abundant from about the twentieth of May to the end of the first week in June, and from the middle of July until the end of the first week in September.

The bulk of them go further north to breed, but I have always found some pairs here during the summer.

GENUS CALIDRIS.

100. **Sanderling.**
(*Calidris arenaria*)

Very abundant in spring and autumn along the lake shores.

Arrive about the tenth of May, depart in October.

Breeds in the far north.

GENUS LIMOSA.

101. **Marbled Godwit.**
(*Limosa fedoa*.)

A very rare visitor.

102. **Hudsonian Godwit.**
(*Limosa hæmastica*.)

Rather more frequently seen than the last, but still very rare.

GENUS TOTANUS.

SUBGENUS GLOTTIS.

103. **Greater Yellow-legs.**
(*Totanus melanoleucus*.)

Common in spring from early in April until the first week in May.

In the autumn sometimes abundant, arriving towards the end of July and remaining until the end of October.

Breeds in the far north.

104. **Yellow legs.**
(*Totanus flavipes*.)

Not common in spring, abundant in autumn, its movements in the spring correspond with those of the last species.

In the fall it arrives early in July and leaves before the middle of September.

Breeds in the far north.

GENUS HELODROMAS.

105. Solitary Sandpiper.

(Helodromas solitarius.)

Generally distributed throughout the Province but nowhere abundant.

Dr. C. K. Clarke of Kingston has found this bird breeding near that town, and, no doubt, it regularly breeds in the interior of the Province.

As I have never found it in the spring I cannot give the date of its arrival. In July it may be found along the margins of our streams or upon muddy flats in the marshes, it departs about the end of September.

GENUS SYMPHEMIA.

106 Willet.

(Symphemia semipalmata.)

A rare visitor.

GENUS PAVONCELLA.

107. Ruff.

(Pavoncella pugnax.)

A specimen of this European bird in some way wandered to Toronto and was taken there in 1882. There are a few other records of its occurrence in America, but it can only be regarded as a straggler on this continent.

GENUS BARTRAMIA.

108. Bartramian Sandpiper. (Upland Plover)

(Bartramia longicauda.)

This is a bird of the prairie and is of rare and local occurrence here. I have found it breeding in the Counties of Brant and Norfolk, and Dr. C. K. Clarke reports it as regularly nesting near Kingston.

GENUS TRYNGITES.

109. Buff-breasted Sandpiper.

(Tryngites subruficollis.)

A rather rare and irregular autumn visitor in Ontario. I have usually found it in August.

Mr. McIlwraith on the authority of Dr. Macallum records the discovery of a nest and eggs of this species near Dunnville.

GENUS ACTITIS.

110. **Spotted Sandpiper.**
(*Actitis macularia*.)

An abundant summer resident, breeding throughout the Province.
Arrives about the first of May, departs about the middle of September.

GENUS NUMENIUS.

111. **Long-billed Curlew.**
(*Numenius longirostris*.)

A very rare visitor, usually in the spring.

112. **Hudsonian Curlew.**
(*Numenius hudsonicus*.)

An irregular visitor, sometimes occurring in large numbers in spring, in the autumn it is rarely seen.

Breeds in the far north.

113. **Eskimo Curlew.**
(*Numenius borealis*.)

A very rare visitor.

FAMILY CHARADRIIDÆ. PLOVERS.

GENUS SQUATAROLA.

114. **Black-bellied Plover.**
(*Squatarola squatarola*.)

Common spring and autumn visitor, passing through in the spring migration between the twentieth of May and the end of the first week in June, they return from the north in August and remain until about the middle of October.

Breeds in the far north.

GENUS CHARADRIUS.

SUBGENUS CHARADRIUS.

- 115 **Golden Plover. (American Golden Plover.)**
(*Charadrius dominicus*.)

I have never found the Golden Plover in Ontario in the spring. Dr. C. K. Clarke informs me that it sometimes occurs near Kingston at that season.

In the autumn it is generally fairly abundant in most parts of the country, visiting the newly ploughed fields, the muddy flats of marshes and the sand bars of the lakes.

It arrives from the north towards the end of August and departs about the middle of October.

Breeds in the Arctic regions.

GENUS *ÆGIALITIS*.

SUBGENUS *OXYECHUS*.

116. Killdeer.

(*Ægialitis vocifera*.)

A common summer resident, generally distributed over the Province, breeding through its range.

Arrives about the end of March, departs early in October.

SUBGENUS *ÆGIALITIS*.

117. Semipalmated Plover.

(*Ægialitis semipalmata*.)

Common in spring from about the middle of May to the end of first week in June when it goes north to breed. In July they return and are again abundant until the end of September, sometimes remaining even later.

118. Piping Plover.

(*Ægialitis meloda*.)

A regular, but not a common summer resident.

They arrive early in May and probably leave as soon as the young can fly as I have never found them in autumn.

119. Snowy Plover.

(*Ægialitis nivosa*.)

Only two specimens have been taken in the Province to my knowledge.

FAMILY *APHRIZIDÆ*. TURNSTONES, ETC.

SUBFAMILY *ARENARIINÆ*. TURNSTONES.

GENUS *ARENARIA*.

120. Turnstone. (Redshank.)

(*Arenaria interpres*.)

Very abundant at some points along the lake shores in spring, arriving about the twenty-fifth of May and remaining until the middle

of June. In the fall they are never common, a few in immature plumage return this way about the first of August and remain until the middle of September. Breeds far north.

Order GALLINÆ. Gallinaceous Birds.

Sub-order PHASIANI Grouse, Partridges, etc.

FAMILY TETRAONIDÆ. GROUSE, PARTRIDGES, ETC.

SUBFAMILY PERDICINÆ. PARTRIDGES.

GENUS COLINUS.

121. Quail. (Bob White.)

(*Colinus virginianus*.)

A common resident in the south-western counties of Ontario

A valuable game bird and one of the farmer's best friends.

SUBFAMILY TETRAONINÆ. GROUSE.

GENUS DENDRAGAPUS.

GENUS CANACHITES.

122. Canada Grouse. (Spruce Partridge.)

(*Canachites canadensis*.)

Common resident in the northern counties of Ontario.

GENUS BONASA.

123. Ruffed Grouse. (Partridge.)

(*Bonasa umbellus*.)

A common resident throughout the Province.

Three sub-species have been separated from the typical form, all of which are found here with endless intermediate variations.

GENUS LAGOPUS.

124. Willow Ptarmigan.

(*Lagopus lagopus*.)

A regular winter visitor to the extreme northern parts of the Province.

GENUS TYMPANUCHUS.

125. Pinnated Grouse. (Prairie hen.)

(*Tympanuchus americanus*.)

Formerly a resident of the open country along our southwestern border but now extinct there.

GENUS PEDICETES.

126. Sharp-tailed Grouse.

(*Pedícetes phasianellus*.)

A resident of the northwestern part of the Province.

FAMILY PHASIANIDÆ.

SUBFAMILY MELEAGRINÆ.

GENUS MELEAGRIS.

127. Wild Turkey.

(*Meleagris gallapavo fera*.)

Formerly common in all the southwestern counties. There are still a few left in that district, but they are very scarce.

Resident wherever found.

Order COLUMBÆ. Pigeons.

FAMILY COLUMBIDÆ. PIGEONS.

GENUS ECTOPISTES.

128. Passenger Pigeon.

(*Ectopistes migratorius*.)

Formerly a very abundant summer resident, occurring in flocks of countless thousands, but now very scarce.

Dr. C. K. Clarke informs me that he found a small colony breeding in Eastern Ontario in 1898.

GENUS ZENAIIDURA.

129. Mourning Dove. (Carolina Dove.)

(*Zenaidura macroura*.)

A common summer resident, but somewhat locally distributed. Breeding throughout its range.

Arrives early in April and departs in October, stragglers sometimes remaining until the middle of November.

Order RAPTORES. Birds of prey.**Suborder SARCORHAMPHI. American Vultures.****FAMILY CATHARTIDÆ. AMERICAN VULTURES.****GENUS CATHARTES.****130. Turkey Vulture.****(Cathartes aura.)**

Of occasional occurrence, specimens having been taken at many places from east to west.

Suborder FALCONES. Falcons, Hawks, Eagles, etc.**FAMILY FALCONIDÆ. FALCONS, HAWKS, EAGLES, ETC.****SUBFAMILY ACCIPITRINÆ. KITES, HAWKS, EAGLES, ETC.****GENUS ELANOIDES.****131. Swallow-Tailed Kite.****(Elanoides forficatus.)**

Mr. McIlwraith records the occurrence of this species in Ontario, and it is quite likely to be seen here again as it is a great wanderer.

GENUS CIRCUS.**132. Marsh Hawk.****(Circus hudsonius.)**

Very common summer resident, breeding in the marshes of the interior.

Arrives early in April, departs about the end of October.

One of our most useful hawks.

GENUS ACCIPITER.**SUBGENUS ACCIPITER.****133. Sharp-shinned Hawk.****(Accipiter velox.)**

Common summer resident, breeding through its range. Arrives early in April. The bulk depart about the middle of September, but stragglers often remain until the end of October.

This bird is very destructive to young poultry.

134. Cooper's Hawk.**(Accipiter cooperi.)**

A summer resident, but not nearly so abundant as the last. Breeds in the interior of the Province.

A very destructive hawk.

SUBGENUS ASTUR.

135. **Goshawk.**

(*Accipiter atricapillus*.)

A winter visitor to Southern Ontario. Probably resident in the northern part of the Province.

This hawk is capable of killing full grown fowls and does so at every opportunity.

GENUS BUTEO.

136. **Red-tailed Hawk.**

(*Buteo borealis*.)

A common summer resident, breeding in the interior. Arrives early in March, departs at the beginning of November. A few have been seen in winter.

A useful hawk feeding chiefly on mice, grasshoppers and frogs.

137. **Red-shouldered Hawk.**

(*Buteo lineatus*.)

Common summer resident. Less frequently seen than the last. Breeds in the interior. Arrives a little later than the Red-tail, and leaves towards the end of October.

A useful hawk feeds chiefly on mice, reptiles and grasshoppers.

SUBGENUS TACHYTRIORCHIS.

138. **Swainson's Hawk.**

(*Buteo swainsoni*.)

A rare visitor from the western prairies where it is abundant.

139. **Broad-winged Hawk.**

(*Buteo latissimus*.)

A common summer resident. Breeds through its range. A useful species.

GENUS ARCHIBUTEO.

140. **American Rough-legged Hawk.**

(*Archibuteo lagopus sancti-johannis*.)

A common visitor in spring and autumn, probably a summer resident in the northern portion of the Province.

They arrive early in April and the bulk have departed by the end of November.

One of our most beneficial birds, its food consisting almost entirely of mice and grasshoppers.

GENUS AQUILA.

141. **Golden Eagle.**

(*Aquila chrysaëtos*.)

An irregular visitor to southern Ontario, probably resident in the unsettled portions of the north.

GENUS HALIÆTUS.

142. **Fald Eagle.**

(*Haliaëtus leucocephalus*.)

A resident species, which until a few years ago regularly bred in certain localities along the shores of our lakes, but which has now retired to the quiet of the interior to raise its young, visiting southern Ontario in winter.

SUBFAMILY FALCONINÆ. FALCONS.

GENUS FALCO.

SUBGENUS HIEROFALCO.

*143. **White Gyrfalcon.**

(*Falco islandus*.)

An accidental visitor.

SUBGENUS RHYNCHODON.

144 **Duck Hawk. (Peregrine Falcon.)**

(*Falco peregrinus anatum*.)

A regular but not a common autumn visitor to southern Ontario. Rarely seen in spring. May possibly breed in the northern part of the Province.

SUBGENUS ÆSALON.

145. **Pigeon Hawk.**

(*Falco columbarius*.)

A common visitor in autumn, not very frequently seen in spring, breeds in the north and retires southward by the end of September.

SUBGENUS TINNUNCULUS.

- 146 **Sparrow Hawk** (American Sparrow Hawk.)
(*Falco sparverius*.)

A common summer resident, breeds throughout its range. Arrives early in April, departs about the end of September.

A very useful bird, feeding on mice and insects chiefly.

GENUS POLYBORUS.

147. **Andubon's Caracara.**
(*Polyborus cheriway*.)

An accidental visitor from the south.

Mr. G. E. Atkinson has recorded the finding of a specimen on the north shore of Lake Superior on the 18th of July, 1892.

SUBFAMILY PANDIONINÆ.

GENUS PANDION.

148. **Osprey.** (Fish Hawk.)
(*Pandion haliaëtus etrolinensis*.)

A common summer resident, breeding in suitable places throughout the Province.

Arrives in April, departs at the end of September.

SUBORDER STRIGES. OWLS.

FAMILY STRIGIDÆ. BARN OWLS.

GENUS STRIX.

149. **Barn Owl.** (American Barn Owl.)
(*Strix pratensis*.)

A very rare visitor from the south.

FAMILY BUBONIDÆ. HORNED OWLS, ETC.

GENUS ASIO.

150. **Long-eared Owl.**
(*Asio wilsonianus*.)

A fairly common summer resident, breeding in the northern parts of the Province, more frequently seen in the autumn than at any other season.

151. **Short-eared Owl.**
(*Asio accipitrinus*.)

This owl is sometimes very common in the autumn, about the low meadows and marshes. In such places I have found them also during the winter at times.

It probably breeds in the interior of the Province.

GENUS SYRNIUM.

152. **Barred Owl.**

(*Syrnium nebulosum*.)

A few of these birds generally occur in the southern parts of the Province every autumn, but I have not heard of its being observed at any other season. Probably resident in the interior.

GENUS SCOTIAPTEX.

153. **Great Grey Owl.** (*Cinereus Owl*.)

(*Scotiaptex cinerea*.)

A winter visitor. A few being found here nearly every season. Probably resident in the northern part of the Province.

GENUS NYCTALA.

154. **Richardson's Owl.**

(*Nyctala tengmalmi richardsoni*.)

A winter visitor from the far north, seldom seen in southern Ontario.

155. **Saw-whet Owl.**

(*Nyctala acadica*.)

An irregular winter visitor, sometimes occurring in considerable numbers, and sometimes absent.

Probably breeds in the interior of the Province, as it is said to do so from Illinois northward.

GENUS MEGASCOPS.

156. **Screech Owl.**

(*Megascops asio*.)

A common resident in southern Ontario, breeding throughout its range.

A very useful bird, feeding almost entirely on mice and insects.

GENUS BUBO.

157. **Great Horned Owl.**

(*Bubo virginianus*.)

A common resident, breeding throughout its range.

Very destructive to poultry, but destroying many rats and small mammals.

GENUS NYCTEA.

158. **Snowy Owl.**

(Nyctea nyctea.)

A winter visitor occurring in varying numbers almost every season.

GENUS SURNIA.

159. **Hawk Owl.** (American Hawk Owl.)

(Surnia ulula caparoch.)

A regular winter visitor in northern Ontario, not often seen in the southern portions of the Province.

Order COCCYGES. Cuckoos, etc.

Suborder CUOULI. Cuckoos, etc.

FAMILY CUCULIDÆ. CUCKOOS, ETC.

SUBFAMILY COCCYZINÆ. AMERICAN CUCKOOS

GENUS COCCYZUS.

160. **Yellow-billed Cuckoo.**

(Coccyzus americanus.)

A regular but rather rare summer resident, breeding throughout its range.

161. **Black-billed Cuckoo.**

(Coccyzus erythrophthalmus.)

A common summer resident, breeding throughout its range.

Arrives about the twentieth of May, departs about the end of September.

Suborder ALCYONES. Kingfishers.

FAMILY ALCEDINIDÆ. KINGFISHERS.

GENUS CERYLE.

SUBGENUS STREPTOCERYLE.

162. **Belted Kingfisher.**

(Ceryle alcyon.)

A common summer resident, breeding throughout its range.

Arrives about the beginning of April, departs early in October.

I have several times found these birds spending the winter on rapid streams in southern Ontario.

Order PICI. Woodpeckers, etc.**FAMILY PICIDÆ. WOODPECKERS.****GENUS DRYOBATES.****163 Hairy Woodpecker***(Dryobates villosus.)*

A common resident, breeding throughout the Province.

164. Downy Woodpecker.*(Dryobates pubescens medianus.)*

A common resident, breeding throughout the Province.

GENUS PICOIDES.**165. Arctic three-toed Woodpecker.***(Picoides arcticus.)*

Common resident in the northern part of the Province, rare winter visitor in the southern part. Breeds in the northern portion of its range.

166. American three-toed Woodpecker. .*(Picoides americanus.)*

Resident in the northern part of Ontario but much less abundant than the last. I have no record of its occurrence in southern Ontario.

GENUS SPHYRAPICUS.**167. Yellow-bellied Woodpecker. (Sapsucker)***(Sphyrapicus varius.)*

A common summer resident, breeding throughout its range in the Province.

Arrives about the middle of April, departs about the middle of September.

It is this species only that bores holes in the bark of trees for the purpose of obtaining the sap.

GENUS CEOPHLCUS.**168. Pileated Woodpecker. (Cock of the woods.)***(Ceophloeus pileatus abieticola.)*

Resident, but restricted to that part of the country still covered with heavy timber. Breeds throughout its range in the Province.

GENUS MELANERPES.

SUBGENUS MELANERPES.

169. Red-headed Woodpecker.

(Melanerpes erythrocephalous.)

A summer resident, still common but much less abundant than it was a few years ago. Breeds throughout its range.
Arrives early in May, departs early in September.

SUBGENUS CENTURUS.

170. Red-bellied Woodpecker.

(Melanerpes carolinus.)

Rare summer resident in the south-western counties, occurring regularly as far east as the County of Wentworth.
Breeds throughout its range in the Province.

GENUS COLAPTES.

171. Flicker. (Golden-winged Woodpecker, Highholder.)

(Colaptes auratus luteus.)

Common summer resident, breeds throughout the Province.
Arrives about the middle of April, departs early in October.

Order MACROCHIRES. Goatsuckers, Swifts, etc.

Suborder CAPRIMULGI. Goatsuckers, etc.

FAMILY CAPRIMULGIDÆ. GOATSUCKERS, ETC.

GENUS ANTROSTOMUS.

172. Whip-poor-will.

(Antrostomus vociferus.)

A common summer resident in the woods. Breeds throughout its range in the Province.
Arrives early in May, departs early in October.

GENUS CHORDEILES.

173. Night Hawk.

(Chordeiles virginianus.)

An abundant summer resident, breeds throughout its range in the Province.

Arrives about the middle of May, departs early in September.

Suborder OYPSELI. Swifts.**FAMILY MICROPODIDÆ. SWIFTS.****SUBFAMILY CHÆTURINÆ. SPINE-TAILED SWIFTS.****GENUS CHÆTURA.**

174. **Chimney Swift.** (Chimney Swallow.)
(*Chætura pelagica*.)

An abundant summer resident, breeds throughout its range in the Province. Formerly nested in hollow trees, but has abandoned them and now takes up its residence in chimneys and barns.

Arrives early in May, departs at the end of August or early in September.

Suborder TROCHILI. Humming birds.**FAMILY TROCHILIDÆ. HUMMING BIRDS.****GENUS TROCHILUS.****SUBGENUS TROCHILUS.**

175. **Ruby-throated Hummingbird.**
(*Trochilus colubris*.)

A common summer resident, breeds throughout its range in the Province. Arrives early in May departs about the middle of September.

Order PASSERES. Perching Birds.**Suborder CLAMATORES. Songless Perching Birds.****FAMILY TYRANNIDÆ. TYRANT FLYCATCHERS.****GENUS TYRANNUS.**

176. **Kingbird.**
(*Tyrannus tyrannus*.)

An abundant summer resident, breeds throughout its range in the Province. Arrives about the tenth of May, departs about the end of August.

GENUS MYIARCHUS.

177. **Crested Flycatcher.**
(*Myiarchus crinitus*)

Common summer resident, breeding in woods throughout its

range in the Province. Arrives about the middle of May, departs about the end of August.

GENUS SAYORNIS.

178. **Phoebe.**

(Sayornis phoebe.)

An abundant summer resident, breeding about farm buildings and bridges throughout its range in the Province. Arrives early in April, departs early in October.

GENUS CONTOPUS.

SUBGENUS NUTTALLORNIS.

179 **Olive-Sided Flycatcher.**

(Contopus borealis.)

A regular but uncommon visitor. I have found one or two each spring for several years, but have not seen it at any other season.

SUBGENUS CONTOPUS.

180. **Wood Pewee.**

(Contopus virens.)

Common summer resident, breeding in woods throughout its range in the Province. Arrives about the middle of May, departs about the middle of September.

GENUS EMPIDONAX.

181. **Yellow-bellied Flycatcher.**

(Empidonax flaviventris.)

An uncommon visitor. I have seen a few each spring, but have never seen the species later than June. It probably breeds throughout its range in the Province.

182. **Traill's Flycatcher.**

(Empidonax traillii.)

A regular visitor, generally distributed, but never common. I have only found it in spring in Southern Ontario.

Breeds in the interior.

183. **Least Flycatcher.**

(Empidonax minimus.)

Common summer resident, breeding in orchards, shrubberies and woodlands throughout its range in the Province.

Arrives about the middle of May, departs at the end of August.

Suborder OSCINES. Song Birds.**FAMILY ALAUDIDÆ. LARKS.****GENUS OTOCORIS.****184. Horned Lark (Shore Lark).****(Otocoris alpestris.)**

This form of Shore Lark is a winter visitor in Ontario, and is rarely seen now.

Twenty-five years ago it was common here in severe weather, frequently with the Snow Bunting.

184a. Prairie Horned Lark.**(Otocoris alpestris praticola.)**

This sub-species is now a common summer resident, breeding in open fields wherever it occurs in the Province. It appears to have extended its range from the prairies as the timber has been cleared off, and the land brought under cultivation.

Arrives about the tenth of February, departs late in November.

FAMILY CORVIDÆ. CROWS, JAYS, ETC.**SUBFAMILY GARRULINÆ. JAYS, ETC.****GENUS CYANOCITTA.****185. Blue Jay.****(Cyanocitta cristata.)**

A common resident, breeding throughout its range in the Province.

GENUS PERISOREUS.**186. Canada Jay.****(Perisoreus canadensis.)**

A common resident in the northern part of the Province, breeding where it occurs.

SUBFAMILY CORVINÆ. CROWS.**GENUS CORVUS.****187. Northern Raven.****(Corvus corax principalis.)**

Tolerably common in the interior of the Province, probably breeds in the remote forests.

188. Common Crow.**(Corvus americanus.)**

Abundant resident in Southern Ontario, summer resident in the northerly portions of the Province ; breeds throughout its range.

FAMILY ICTERIDÆ. BLACKBIRDS, ORIOLES, ETC.

GENUS DOLICHONYX.

189. **Bobolink.**

(*Dolichonyx oryzivorus*.)

Abundant summer resident, breeds in the hay meadows throughout its range, which does not extend north of the cultivated country.

Arrives about the 10th of May, departs about the end of August.

GENUS MOLOTHRUS.

190. **Cowbird.**

(*Molothrus ater*.)

An abundant summer resident, deposits its eggs in the nests of other small birds, breeding throughout its range.

Arrives about the first of April, departs early in October.

This is the most injurious bird we have, as each egg deposited by it means the destruction of a whole brood of one of our beneficial species.

GENUS XANTHOCEPHALUS.

191. **Yellow-headed Blackbird.**

(*Xanthocephalus xanthocephalus*.)

A very rare summer visitor from the western prairies.

GENUS AGELAIUS.

192. **Red-winged Blackbird.**

(*Agelaius phoeniceus*)

A very abundant summer resident, breeding in marshes throughout its range.

Arrives about the middle of March, departs about the middle of October.

GENUS STURNELLA.

193. **Meadow Lark.**

(*Sturnella magna*.)

A common summer resident in southern Ontario, gradually extending its range northward as the land is cleared. Breeds on the ground in meadows throughout its range.

Arrives towards the end of March, departs late in October or early in November.

In mild seasons these birds frequently stay very late and I have on several occasions found small parties of them spending the winter here.

GENUS ICTERUS.

SUBGENUS PENDULINUS.

194. Orchard Oriole.

(*Icterus spurius*.)

A rare summer resident in the south-western counties, breeding in orchards and shrubberies. I found it regularly in the counties of Haldimand and Norfolk, but it is not common.

SUBGENUS YPHANTES.

195. Baltimore Oriole.

(*Icterus galbula*.)

A common summer resident, breeding throughout its range in the Province.

Arrives early in May, departs about the end of August.

GENUS SCOLECOPHAGUS.

196. Rusty Blackbird.

(*Scolecophagus carolinus*.)

A common migrant through Ontario, it arrives in spring about the middle of April and passes northward without much delay; about the end of September they return and soon become abundant in the marshes where they remain until the end of October.

Probably breed in the northern part of the Province.

GENUS QUISCALUS.

SUBGENUS QUISCALUS.

197. Bronzed Grackle.

(*Quiscalus quiscula æneus*.)

A common summer resident breeding in colonies throughout its range in the Province.

Arrives about the middle of March, departs early in October.

FAMILY FRINGILLIDÆ. FINCHES, SPARROWS, ETC.

GENUS COCCOTHAUSTES.

SUBGENUS HESPERIPHONA.

198. Evening Grosbeak.

(*Coccothraustes vespertinus*.)

An accidental visitor from the west sometimes occurring in winter.

GENUS PINICOLA.

199. Pine Grosbeak.

(*Pinicola enucleator canadensis*.)

An irregular winter visitor to southern Ontario, in some seasons quite common, in others entirely absent.

Probably breeds in the extreme north of the Province.

GENUS CARPODACUS.

200. Purple Finch.

(*Carpodacus purpureus*.)

Common resident, breeds throughout its range in the Province

GENUS LOXIA.

201 American Crossbill.

(*Loxia curvirostra minor*.)

A regular and sometimes an abundant winter visitor.

As I have found representatives of this species in southern Ontario in nearly every month of the year, I think they breed throughout the Province.

202. White-winged Crossbill.

(*Loxia leucoptera*.)

An irregular winter visitor to southern Ontario, never abundant. Of regular occurrence in the northern part of the Province where it is resident.

GENUS ACANTHIS.

203. Greenland Redpoll.

(*Acanthis hornemannii*.)

Probably occurs as a winter visitor, but I have no satisfactory record of it.

203a. Hoary Redpoll.

(*Acanthis hornemannii exilipes*.)

A somewhat irregular winter visitor occurring in varying numbers at any time between September and May.

204. Common Redpoll.

(*Acanthis linaria*.)

Generally common in winter, but sometimes entirely absent.
Breeds in the far north.

204a. **Holboell's Redpoll.**

(*Acanthis linaria holboellii*.)

Occurs in winter sparingly with the other Redpolls.

204b. **Greater Redpoll.**

(*Acanthis linaria rostrata*.)

Occurs in winter sparingly with the other Redpolls.

GENUS *ASTRAGALINUS*.

205. **American Goldfinch.**

(*Astragalinus tristis*.)

A common resident in southern Ontario, more abundant in summer than in winter, a large number going south at the approach of cold weather.

GENUS *SPINUS*.

206. **Pine Siskin. (Pine Finch.)**

(*Spinus pinus*.)

A winter visitor, generally abundant.

GENUS *PASSER*.

207. **House Sparrow. (English Sparrow.)**

(*Passer domesticus*.)

An importation from Europe, now an abundant resident, breeding wherever it occurs.

GENUS *PASSERINA*.

208. **Snow Sunting. (Snowbird.)**

(*Passerina nivalis*.)

A common winter visitor. Arrives about the end of October; departs about the middle of March.

Breeds in the Arctic regions.

GENUS *CALCARIUS*.

209. **Lapland Longspur.**

(*Calcarius lapponicus*.)

An irregular winter visitor, most frequently found in late autumn and early spring.

Breeds in the far north.

GENUS POECETES.

210. **Vesper Sparrow.** (Baywing)
(*Poecetes gramineus*.)

An abundant summer resident. Breeds throughout its range in the Province.

Arrives about the middle of April; departs early in October.

GENUS AMMODRAMUS.

SUBGENUS PASSERCULUS.

211. **Savanna Sparrow.**
(*Ammodramus sandwichensis savanna*.)

A common summer resident, breeding throughout its range in the Province.

Arrives about the middle of April; departs early in October.

SUBGENUS COTURNICULUS.

212. **Grasshopper Sparrow.**
(*Ammodramus savannarum passerinus*.)

A very rare visitor to southern Ontario.

213. **Le Conte's Sparrow.**
(*Ammodramus lecontei*.)

An accidental visitor from the western prairies.

SUBGENUS AMMODRAMUS.

214. **Nelson's Sharp-tailed Sparrow.**
(*Ammodramus nelsoni*.)

A regular but not a common visitor in autumn to the neighborhood of Toronto. Rare in spring.

GENUS CHONDESTES.

215. **Lark Sparrow.**
(*Chondestes grammacus*.)

A regular but not a common summer resident of some localities in southern Ontario. Breeding where it occurs.

GENUS ZONOTRICHIA.

216. **White crowned Sparrow.**
(*Zonotrichia leucophrys*.)

A common migrant, arriving about the tenth of May, and soon passing northward, returning towards the end of September, and departing southward late in October.

Breeds in the far north.

217. **White-throated Sparrow.** (Peabody.)
(*Zonotrichia albicollis*.)

Very abundant during the migrations, and a regular, though not common, summer resident in southern Ontario, where a few pairs always remain to breed.

Arrives about the end of April; departs southward early in October.

GENUS SPIZELLA.

218. **Tree Sparrow.**
(*Spizella monticola*.)

A common winter visitor. Breeds in the far north.

Arrives early in October; departs late in April.

219. **Chipping Sparrow.** (Hairbird)
(*Spizella socialis*.)

An abundant summer resident. Breeds throughout its range in the Province.

Arrives about the middle of April; departs in September.

220. **Field Sparrow.**
(*Spizella pusilla*.)

A common summer resident in southern Ontario. Breeds throughout its range in the Province.

Arrives about the middle of April; departs early in October.

GENUS JUNCO.

221. **Junco**
(*Junco hyemalis*.)

A common resident; breeds throughout its range in the Province, but is most abundant in the spring and late autumn migrations.

GENUS MELOSPIZA.

222. **Song Sparrow.**
(*Melospiza fasciata*.)

An abundant summer resident; breeds throughout its range in the Province.

Arrives about the middle of March; departs late in October.

223. **Lincoln's Sparrow.**

(*Melospiza lincolni*.)

A regular but never a common visitor in the spring; perhaps breeds here, but so far I have only found it in May. It frequently accompanies the white-crowned sparrows.

224 **Swamp Sparrow.**

(*Melospiza georgiana*.)

A very abundant summer resident in marshes; breeds throughout its range in the Province.

Arrives about the middle of April; departs early in November.

GENUS PASSERELLA.

225. **Fox Sparrow.**

(*Passerella iliaca*.)

A very rapid migrant. Large numbers pass through southern Ontario about the middle of April, seldom resting here for more than a day or two. In the autumn a few are always to be found, but they are not common at that season. Breeds in the north.

GENUS PIPILO.

226. **Towhee.**

(*Pipilo erythrophthalmus*.)

An abundant summer resident in the woods of Southern Ontario; breeds throughout its range in the Province.

Arrives about the end of April; departs early in October.

GENUS CARDINALIS.

227. **Cardinal.**

(*Cardinalis cardinalis*.)

A rare summer resident of the South Western counties.

GENUS ZAMELODIA.

228. **Rose breasted Grosbeak.**

(*Zamelodia ludoviciana*.)

A tolerably common summer resident; breeds throughout its range in the Province.

Arrives about the middle of May; departs towards the end of August.

This is one of the few birds that will eat the potato bug.

GENUS CYANOSPIZA.

229. Indigo Bunting.

(*Cyanospiza cyanea*.)

A common summer resident, breeding throughout its range in the Province.

Arrives early in May; departs about the end of August.

GENUS SPIZA.

230. Dickcissel.

(*Spiza americana*.)

Mr. Saunders has recorded the occurrence of this bird in South-western Ontario as a summer resident, and I have heard of it at other points along our southern boundary.

FAMILY TANAGRIDÆ. TANAGERS.

GENUS PIRANGA.

231. Scarlet Tanager.

(*Piranga erythromelas*)

Tolerably common summer resident, breeding throughout its range in the Province.

Arrives early in May, departs in August.

232. Summer Tanager.

(*Piranga rubra*.)

A very rare summer visitor to the south-western part of the Province.

FAMILY HIRUNDINIDÆ.

GENUS PROGNE.

233 Purple Martin.

(*Progne subis*.)

A common summer resident, breeding throughout its range in the Province.

Arrives about the fifteenth of April, departs early in September.

GENUS PETROCHELIDON.

234. **Cliff Swallow.**

(Petrochelidon lunifrons.)

A regular summer resident, somewhat irregularly distributed, being abundant at some points and absent from others. Breeds in colonies under the eaves of barns, etc. throughout its range in the Province.

Arrives early in May, departs in August.

GENUS HIRUNDO.

235. **Barn Swallow.**

(Hirundo erythrogaster.)

A common summer resident, breeds throughout its range in the Province.

Arrives about the end of April, departs early in September.

GENUS TACHYCINETA.

236. **White-breasted Swallow.** (Tree Swallow.)

(Tachycineta bicolor.)

A common summer resident, breeding in holes in the side of buildings, nest boxes, etc., throughout its range in the Province.

Arrives quite early in April, departs about the end of September

GENUS CLIVICOLA.

237. **Bank Swallow.** (Sand Martin)

(Clivicola riparia.)

An abundant summer resident, breeding in colonies in holes in sandbanks throughout its range in the Province.

Arrives about the beginning of May, departs about the middle of September.

GENUS STELGIDOPTERYX.

238. **Rough winged Swallow.**

(Stelgidopteryx serripennis.)

A rare summer resident of our southern border, where it has been found as far east as Toronto.

FAMILY AMPELIDÆ. WAXWINGS, ETC.

SUBFAMILY AMPELINÆ. WAXWINGS.

GENUS AMPELIS.

239. **Bohemian Waxwing.**

(Ampelis garrulus.)

An irregular winter visitor, never abundant. Breeds in the far north.

240. **Cedar Waxwing.**

(*Ampelis cedrorum*.)

A resident species, common, and generally distributed in summer, irregular in winter, its movements at that season probably depending upon the food supply.

FAMILY LANIIDÆ. SHRIKES.

GENUS LANIUS.

241. **Northern Shrike.**

(*Lanius borealis*.)

A regular, but not abundant winter visitor. Breeding far north. Arrives in October, departs in April.

242. **Loggerhead Shrike.**

(*Lanius ludovicianus*.)

A regular, but not abundant summer resident, breeds throughout its range in the Province.

Our form is probably referable to subspecies *L. l. migrans*. Arrives early in April, departs about the end of August.

FAMILY VIREONIDÆ. VIREOS.

GENUS VIREO.

SUBGENUS VIREOSYLVA.

243. **Red-eyed Vireo.**

(*Vireo olivaceus*.)

A common summer resident in woods. Breeds throughout its range in the Province.

Arrives early in May, departs towards the end of September.

244. **Philadelphia Vireo.**

(*Vireo philadelphicus*.)

Tolerably common summer resident, breeds throughout its range in the Province.

Arrives about the middle of May, departs at the end of September.

245. **Warbling Vireo.**

(*Vireo gilvus*.)

Common summer resident, breeds throughout its range in the Province.

Arrives about the middle of May, departs in September.

SUBGENUS LANIVIREO.

246. **Yellow-throated Vireo**

(*Vireo flavifrons*.)

An uncommon summer resident, breeds throughout its range in the Province.

Arrives about the beginning of May, departs early in September.

247. **Blue headed Vireo** (Solitary Vireo)

(*Vireo solitarius*.)

A regular migrant in spring and autumn, probably breeds in the interior of the Province.

Arrives early in May, departs at the end of September.

SUBGENUS VIREO.

248. **White-eyed Vireo.**

(*Vireo noveboracensis*.)

Mr. W. L. Kells has recorded the capture of one specimen near Listowell, in the middle of October, 1890.

FAMILY MNIOTILTIDÆ. WOOD WARBLERS.

GENUS MNIOTILTA.

249 **Black and White Warbler.**

(*Mniotilta varia*.)

A very common summer resident, breeding throughout its range in the Province.

Arrives about the first of May, departs early in September.

GENUS PROTONOTARIA.

*250 **Prothonotary Warbler.**

(*Protonotaria citrea*.)

Mr. McIlwraith has recorded the capture of one specimen near Hamilton, in May, 1888, which is all I have heard of.

GENUS HELMINTHOPHILA.

251 **Golden-winged Warbler.**

(*Helminthophila chrysoptera*.)

A rare summer visitor, recorded from several places in the southern

and western counties, and Mr. Kells has found it breeding near Listowell.

252. Nashville Warbler.

(*Helminthophila rubricapilla.*)

A common migrant. Breeds sparingly in Southern Ontario, and no doubt regularly in the interior.

Arrives early in May, departs early in October.

253. Orange-crowned Warbler.

(*Helminthophila celata.*)

A rare summer visitor.

254. Tennessee Warbler.

(*Helminthophila perigrina.*)

A regular but not a common visitor in spring. I have not found it at any other season.

Arrives about the middle of May.

GENUS COMPSOTHTYPIS.

255 Parula Warbler.

(*Compsothtypis americana usneæ.*)

A common spring and autumn migrant. Probably breeds in the interior.

Arrives about the fifteenth of May, departs towards the end of September.

GENUS DENDROICA.

SUBGENUS PERISSOGLOSSA.

256. Cape May Warbler.

(*Dendroica tigrina.*)

A rare summer visitor. I have only found this species in the spring.

SUBGENUS DENDROICA.

257. Yellow Warbler.

(*Dendroica æstiva.*)

A very abundant summer resident. Breeds throughout its range in the Province.

Arrives early in May, departs about the end of August.

258 Black-throated blue Warbler.

(*Dendroica cærulescens.*)

- A common summer resident. Breeding in the interior.
Arrives early in May, departs at the end of September.
- 259 **Myrtle Warbler.** (Yellow-rumped Warbler.)
(*Dendroica coronata*.)
A very abundant summer resident. Breeds in the interior.
Arrives towards the end of April, departs about the end of the first week in October.
260. **Magnolia Warbler.**
(*Dendroica maculosa*.)
A common migrant in spring and autumn. Probably breeds in the interior.
Arrives early in May, departs about the end of September.
261. **Cerulean Warbler.**
(*Dendroica rara*.)
A regular but rare summer resident. Breeds throughout its range in the Province.
262. **Chestnut-sided Warbler.**
(*Dendroica pensylvanica*.)
A common summer resident. Breeds throughout its range in the Province.
Arrives early in May, departs early in September.
263. **Bay-breasted Warbler.**
(*Dendroica castanea*)
A regular but never a common summer resident. Breeds in the interior. This species is most frequently seen in the spring. I have seldom met with it in autumn.
Arrives early in May, departs at the end of September.
- 264 **Black-poll Warbler.**
(*Dendroica striata*)
A regular but not generally a common migrant in spring and autumn. Probably breeds in the northern part of the Province.
Arrives about the twentieth of May, departs at the end of September.
265. **Blackburnian Warbler.**
(*Dendroica blackburniae*.)
A tolerably common spring and autumn migrant in Southern Ontario. Probably breeds in the interior.

CHECK LIST OF THE

Arrives early in May, departs at the end of September.

266. **Black-throated green Warbler.**
(*Dendroica virens*.)

A common summer resident, breeding throughout its range in the Province.

Arrives early in May, departs early in October.

267. **Pine Warbler.**
(*Dendroica vigorsii*.)

An irregular summer resident, sometimes common and in other seasons scarce. Breeds throughout its range in the Province.

Arrives towards the end of April, departs in September.

268 **Palm Warbler.**
(*Dendroica palmarum*.)

A tolerably common migrant in spring and autumn. Probably breeds in the northern part of the Province.

Arrives early in May, departs about the first of October.

Our form may be referable to *D. p. hypochrysea*. Specimens taken by me vary very much in the brilliancy of the yellow coloring.

GENUS SEIURUS.

269. **Ovenbird.** (*Golden crowned Thrush.*)
(*Seiurus aurocapillus*.)

An abundant summer resident in woods. Breeds throughout its range in the Province.

Arrives early in May, departs about the first of September.

270. **Water Thrush.**
(*Seiurus noveboracensis*.)

A common summer resident. Breeds in the interior of the Province.

Arrives early in May, departs early in September.

271. **Louisiana Water Thrush.**
(*Seiurus motacilla*.)

A rare summer visitor along our southern border.)

GENUS GEOTHLYPIS.

SUBGENUS OPORORNIS.

272. **Connecticut Warbler.**
(*Geothlypis agilis*.)

A rare summer resident.

Mr. W. L. Kells records having found several nests near Listowel, and I have found it in summer near Toronto.

Arrives about the middle of May, departs at the end of August.

SUBGENUS GEOTHYLPIS.

273. Mourning Warbler.

(*Geothlypis philadelphia.*)

A rather rare summer resident. Breeds throughout its range in the Province.

Arrives about the twentieth of May, departs at the end of August.

274. Maryland Warbler.

(*Geothlypis trichas.*)

A common summer resident. Breeds throughout its range in the Province.

Arrives about the tenth of May, departs at the end of September.

GENUS ICTERIA.

275. Yellow-breasted Chat.

(*Icteria virens.*)

A very rare summer resident of the southwestern part of the Province.

GENUS WILSONIA.

*276. Hooded Warbler.

(*Wilsonia mitrata.*)

A very rare summer visitor to the south-western counties.

277. Wilson's Warbler.

(*Wilsonia pusilla.*)

A rather rare migrant in spring and autumn, probably breeding in the northern part of the Province.

Arrives about the twentieth of May, departs early in September.

278. Canadian Warbler.

(*Wilsonia canadensis.*)

Common summer resident, breeds throughout its range in the Province.

Arrives early in May, departs at the end of August.

GENUS SETOPHAGA.

279. **American Redstart.**

(Setophaga ruticilla.)

A common summer resident, breeding throughout its range in the Province.

Arrives about the tenth of May, departs early in September.

FAMILY MOTACILLIDÆ. PIPITS, ETC.

GENUS ANTHUS.

SUBGENUS ANTHUS.

280. **American Pipit.**

(Anthus pennsylvanicus.)

An abundant migrant, more frequently seen in autumn than in spring.

Breeds in the far north.

Arrives about the tenth of May and passes on northward very quickly. Early in September they return and remain until about the end of the first week in November.

FAMILY TROGLODYTIDÆ. WRENS, THRASHERS, ETC.

SUBFAMILY MIMINÆ. THRASHERS.

GENUS GALEOSOPTES.

281. **Catbird.**

(Galeoscoptes carolinensis.)

A very common summer resident; breeds throughout its range in the Province.

Arrives about the middle of May, departs early in October.

GENUS HARPORHYNCHUS.

SUBGENUS METHRIOPTERUS.

282. **Brown Thrasher.** (Brown Thrush)

(Harporhynchus rufus.)

A common summer resident, breeds throughout its range in the Province.

Arrives at the end of April, departs early in October.

SUBFAMILY TROGLODYTINÆ. WRENS.

GENUS THRYOTHORUS.

SUBGENUS THRYOTHORUS.

283. **Carolina Wren.**

(Thryothorus ludovicianus.)

Mr. McIlwraith has recorded the capture of a specimen at Mount Forest.

GENUS TROGLODYTES.

SUBGENUS TROGLODYTES.

284. House Wren.

(Troglodytes aëdon.)

A common summer resident, breeds throughout its range in the Province.

Arrives about the first of May, departs early in October.

GENUS ANORTHURA.

285. Winter Wren

(Anorthura hiemalis.)

A summer resident, breeding throughout its range in the Province, commonly in the interior and northward.

Arrives about the middle of April, departs late in October.

GENUS CISTOTHORUS.

SUBGENUS CISTOTHORUS.

286 Short-billed Marsh Wren.

(Cistothorus stellaris.)

A regular summer resident of the south-western part of the Province, but never abundant. Very rare elsewhere. I have taken two at Toronto, but know of no others.

Breeds wherever found.

SUBGENUS TELMATODYTES.

287. Long-billed Marsh Wren.

(Cistothorus palustris.)

A very abundant summer resident in marshes. Breeds throughout its range in the Province.

Arrives at the beginning of May, departs about the middle of October.

FAMILY CERTHIIDÆ CREEPERS.

GENUS CERTHIA.

288. Brown Creeper.

(Certhia familiaris fusca.)

A common resident, most abundant in southern Ontario during the migrations. Breeds occasionally in the southern portion of the Province and regularly in the interior and northward.

FAMILY PARIDÆ. NUTHATCHES and TITS.

SUBFAMILY SITTINÆ. NUTHATCHES.

GENUS SITTA.

289. **White-breasted Nuthatch.**

(*Sitta carolinensis*.)

A common resident, breeds throughout its range in the Province wherever there is heavy timber.

290. **Red-Breasted Nuthatch**

(*Sitta canadensis*.)

A resident species, but most frequently observed during the migrations. In winter it is fairly common. I once found a pair evidently breeding near Toronto, and it regularly breeds in the interior and northward.

SUBFAMILY PARINÆ. TITMICE.

GENUS PARUS.

SUBGENUS PARUS.

291. **Chickadee**

(*Parus atricapillus*.)

A very common resident, breeds throughout its range in the Province.

292. **Hudsonian Chickadee.**

(*Parus hudsonicus*.)

In southern Ontario this is only a very rare straggler from the north.

FAMILY SYLVIIDÆ. KINGLETS, GNATCATCHERS, ETC.

SUBFAMILY REGULINÆ. KINGLETS.

GENUS REGULUS.

293. **Golden-crowned Kinglet.**

(*Regulus satrapa*.)

An abundant migrant and common winter resident. Probably breeds in our northern forests.

294. **Ruby-crowned Kinglet**

(Regulus calendula.)

Common during the spring and autumn migrations. Probably breeds in the interior.

Arrives about the middle of April, departs at the end of October.

SUBFAMILY POLIOPTILINÆ. GNATCATCHERS.

GENUS POLIOPTILA.

295. **Blue-gray Gnatcatcher.**

(Polioptila cærulea.)

A rare summer resident of the south-western counties, breeding where it occurs.

FAMILY TURDIDÆ. THRUSHES, BLUEBIRDS, ETC.

SUBFAMILY TURDINÆ. THRUSHES.

GENUS HYLOCICHLA.

296. **Wood Thrush.**

(Hylocichla mustelina.)

Fairly well distributed throughout southern Ontario but nowhere abundant. Breeds wherever it occurs.

Arrives early in May, departs about the middle of September.

297. **Wilson's Thrush.**

(Hylocichla fuscescens.)

An abundant summer resident, breeds throughout its range in the Province.

Arrives early in May, departs at the end of August.

298. **Grey-cheeked Thrush.**

(Hylocichla aliciae.)

A common migrant in spring and autumn, breeds far north.

Arrives about the middle of May, departs early in October.

299. **Olive-backed Thrush.**

(Hylocichla ustulata swainsonii.)

A common migrant in spring and autumn. Breeds far north.

Arrives about the middle of April, departs early in October.

300. **Hermit Thrush.**

(Hylocichla aonalaschkæ pallasii.)

A common migrant in spring and autumn in Southern Ontario, a summer resident breeding in our northern woods.

Arrives about the tenth of April, departs at the end of October.

GENUS MERULA.

301. **American Robin.**

(*Merula migratoria*)

An abundant summer resident, breeding throughout its range in the Province.

Arrives early in March, the bulk usually depart early in November, but some small flocks remain where food is plentiful until severe frost comes and a few always remain in sheltered gardens, etc, all the winter.

GENUS SIALIA.

302. **Bluebird.**

(*Sialia sialis.*)

A common resident, breeding throughout its range in the Province.

Arrives about the middle of March; departs towards the end of October.

