

**CIHM
Microfiche
Series
(Monographs)**

**ICMH
Collection de
microfiches
(monographies)**



Canadian Institute for Historical Microreproductions / Institut canadien de microreproductions historiques

© 1996

Technical and Bibliographic Notes / Notes techniques et bibliographiques

The Institute has attempted to obtain the best original copy available for filming. Features of this copy which may be bibliographically unique, which may alter any of the images in the reproduction, or which may significantly change the usual method of filming are checked below.

- Coloured covers / Couverture de couleur
- Covers damaged / Couverture endommagée
- Covers restored and/or laminated / Couverture restaurée et/ou pelliculée
- Cover title missing / Le titre de couverture manque
- Coloured maps / Cartes géographiques en couleur
- Coloured ink (i.e. other than blue or black) / Encre de couleur (i.e. autre que bleue ou noire)
- Coloured plates and/or illustrations / Planches et/ou illustrations en couleur
- Bound with other material / Relié avec d'autres documents
- Only edition available / Seule édition disponible
- Tight binding may cause shadows or distortion along interior margin / La reliure serrée peut causer de l'ombre ou de la distorsion le long de la marge intérieure.
- Blank leaves added during restorations may appear within the text. Whenever possible, these have been omitted from filming / Il se peut que certaines pages blanches ajoutées lors d'une restauration apparaissent dans le texte, mais, lorsque cela était possible, ces pages n'ont pas été filmées.
- Additional comments / Commentaires supplémentaires:

L'Institut a microfilmé le meilleur exemplaire qu'il lui a été possible de se procurer. Les détails de cet exemplaire qui sont peut-être uniques du point de vue bibliographique, qui peuvent modifier une image reproduite, ou qui peuvent exiger une modification dans la méthode normale de filmage sont indiqués ci-dessous.

- Coloured pages / Pages de couleur
- Pages damaged / Pages endommagées
- Pages restored and/or laminated / Pages restaurées et/ou pelliculées
- Pages discoloured, stained or foxed / Pages décolorées, tachetées ou piquées
- Pages detached / Pages détachées
- Showthrough / Transparence
- Quality of print varies / Qualité inégale de l'impression
- Includes supplementary material / Comprend du matériel supplémentaire
- Pages wholly or partially obscured by errata slips, tissues, etc., have been refilmed to ensure the best possible image / Les pages totalement ou partiellement obscurcies par un feuillet d'errata, une pelure, etc., ont été filmées à nouveau de façon à obtenir la meilleure image possible.
- Opposing pages with varying colouration or discolourations are filmed twice to ensure the best possible image / Les pages s'opposant ayant des colorations variables ou des décolorations sont filmées deux fois afin d'obtenir la meilleure image possible.

This item is filmed at the reduction ratio checked below /
Ce document est filmé au taux de réduction indiqué ci-dessous.

10x																				
								J												
	12x			16x				20x				24x			28x			32x		

The copy filmed here has been reproduced thanks to the generosity of:

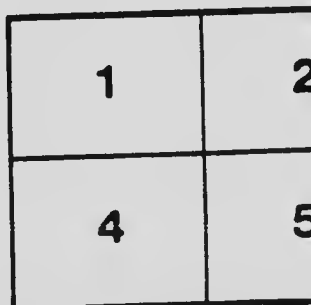
British Columbia Archives and Records Service.

The images appearing here are the best quality possible considering the condition and legibility of the original copy and in keeping with the filming contract specifications.

Original copies in printed paper covers are filmed beginning with the front cover and ending on the last page with a printed or illustrated impression, or the back cover when appropriate. All other original copies are filmed beginning on the first page with a printed or illustrated impression, and ending on the last page with a printed or illustrated impression.

The last recorded frame on each microfiche shall contain the symbol \rightarrow (meaning "CONTINUED"), or the symbol ∇ (meaning "END"), whichever applies.

Maps, plates, charts, etc., may be filmed at different reduction ratios. Those too large to be entirely included in one exposure are filmed beginning in the upper left hand corner, left to right and top to bottom, as many frames as required. The following diagrams illustrate the method:



L'exemplaire filmé fut reproduit grâce à la générosité de:

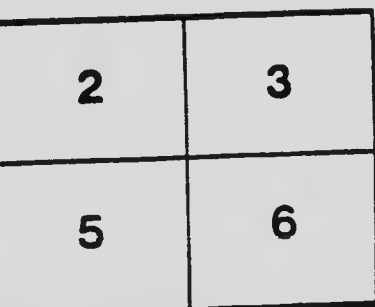
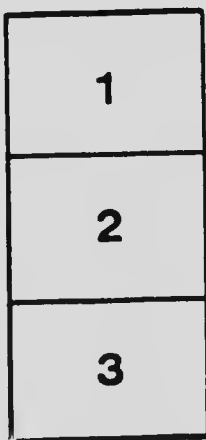
British Columbia Archives and Records Service.

Les images suivantes ont été reproduites avec le plus grand soin, compte tenu de la condition et de la netteté de l'exemplaire filmé, et en conformité avec les conditions du contrat de filmage.

Les exemplaires originaux dont la couverture en papier est imprimée sont filmés en commençant par le premier plat et en terminant soit par la dernière page qui comporte une empreinte d'impression ou d'illustration, soit par le second plat, selon le cas. Tous les autres exemplaires originaux sont filmés en commençant par la première page qui comporte une empreinte d'impression ou d'illustration et en terminant par la dernière page qui comporte une telle empreinte.

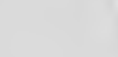
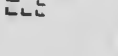
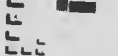
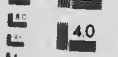
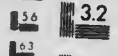
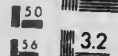
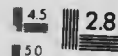
Un des symboles suivants apparaîtra sur la dernière image de chaque microfiche, selon le cas: le symbole \rightarrow signifie "A SUIVRE", le symbole ∇ signifie "FIN".

Les cartes, planches, tableaux, etc., peuvent être filmés à des taux de réduction différents. Lorsque le document est trop grand pour être reproduit en un seul cliché, il est filmé à partir de l'angle supérieur gauche, de gauche à droite, et de haut en bas, en prenant le nombre d'images nécessaire. Les diagrammes suivants illustrent la méthode.



MICROCOPY RESOLUTION TEST CHART

(ANSI and ISO TEST CHART No. 2)



2.8

3.2

3.6

4.0

2.5

2.2

2.0

1.8

1.6



APPLIED IMAGE Inc

1653 East Main Street
Rochester, New York 14609 USA
(716) 482 - 0300 - Phone
(716) 288 - 5989 - Fax

Nwp
971.1Q
C212

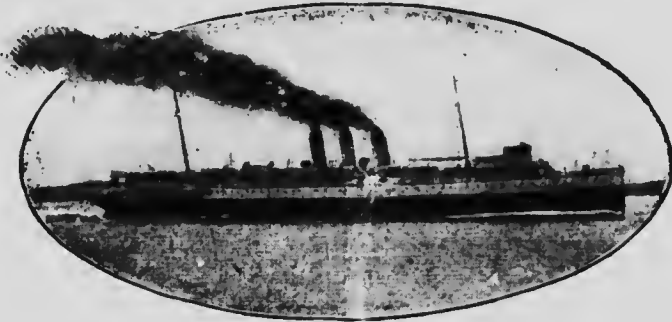


Queen



Charlotte Townsite Excursion, May 8 to 14, '09

BY SPECIAL TRIP OF THE



S.S. "Princess Charlotte"

Handwritten signature

PASSENGER'S NAME

Handwritten signature Berth Number _____

In Stateroom Number 153

Dining Room Table Seat Number 51

ITINERARY

Saturday, May 8th

Leave Victoria	-	-	-	2:00 a.m.
Leave Vancouver	-	-	-	9:00 a.m.

Sunday, May 9th

Arrive Ikeda	-	-	-	11:00 a.m.
Leave Jedway	-	-	-	3:00 p.m.
Arrive Queen Charlotte	-	-	-	9:00 p.m.

Monday, May 10th

Queen Charlotte City all Day

Leave Queen Charlotte	-	-	-	--- p.m.
-----------------------	---	---	---	----------

Tuesday, May 11th

Arrive Prince Rupert	-	-	-	7:00 a.m.
Leave Prince Rupert	-	-	-	--- p.m.

Wednesday, May 12th

Along the B.C. Coast.

Thursday, May 13th

Arrive Vancouver	-	-	-	8:00 a.m.
Leave Vancouver	-	-	-	10:00 a.m.
Arrive Victoria	-	-	-	2:30 p.m.

SATURDAY, MAY 8th.

Leaving Vancouver at 9:00 a.m. the Princess Charlotte will proceed through the Gulf of Georgia, passing Lasketti Island, Hornby Island, Denman Island, etc. Shortly before noon Vancouver Island will be seen, with Union and Comox in the distance, and on the starboard the snow clad peaks on Mainland. Then Campbell River, the Sportsman's Paradise of Vancouver Island, will be passed, then through Seymour Narrows where the fierce current at certain stages of the tide has to be reckoned with by steamers less powerful than the Princess Charlotte. In the afternoon the steamers' course will be along the Johnson Straits, passing Alert Bay where the finest display of totem pole, on the entire Coast is to be found. Early in the evening Queen Charlotte Sound will be reached, and if the weather is favorable steamer will proceed direct to Queen Charlotte Islands, if not journey will probably be made via Naamu, Bella Bella and Milbank Sound.

SUNDAY, MAY 9th.

The passengers' first glimpse of Queen Charlotte Islands will be the snow capped mountains which contain vast treasure vaults of copper and gold, and passengers on arrival at Ikeda Bay, between 10 and 11 a.m., will be given an opportunity of visiting the Ikeda Mines which are less than a mile from the wharf. The next call will be Jedway where the mines, a short distance up the mountain side can be seen from the deck of the steamer. From this point, for the entire length and breadth of Moresby Island, both gold and copper have been discovered in paying quantities, among the important discoveries being the Swede Group and the Tasso Harbor mines. Moresby Island is about 100 miles long with an average breadth of 30 miles. Leaving Jedway about 3 p.m. steamer should reach the strait between Moresby and Graham Islands about 5:00 p.m., and passengers will have an opportunity of viewing a stretch of level farm lands before reaching Queen Charlotte City between 9 and 10 p.m.

MONDAY, MAY 10th.

Queen Charlotte City is situated at the Southern end of Graham Island. There is a vast valley extending from the north end of Graham Island, southward down the Honna River and to the Townsite of Queen Charlotte. This valley contains at least 300,000 acres of exceptionally good land, As far as the eye can see, and

(Continued on page 5)

HOURS FOR

Dressing call for Breakfast will be

Breakfast, First Table—	.	.	.
“ Second Table—	.	.	.
“ Third Table—	.	.	.

Beef Tea and Biscuits will be served

Dressing call for Luncheon will be

Luncheon, First Table	.	.	.
“ Second Table	.	.	.
“ Third Table	.	.	.

Afternoon Tea will be served in state

Dressing call for Dinner will be

Dinner, First Table	.	.	.
“ Second Table	.	.	.
“ Third Table	.	.	.

Sandwiches, Cheese and Crackers may be had
Watchman in the Dining Room

Passengers are requested to take their seats promptly;
Those who are booked for the First or Second Table and are not

S FOR MEALS

st will be sounded on bugle at 7:30 a.m.

- 8:00 a.m. will be announced by ringing of gong.
 - " " " sounding of bugle.
 - " " " ringing of gong.
-

served on the Promenade Deck at 11:00 a.m.

will be sounded on bugle at 12:15 p.m.

- 12:30 p.m. will be announced by ringing of gong.
 - " " " sounding of bugle.
 - " " " ringing of gong.
-

in staterooms from 4:15 p.m. to 4:30 p.m.

will be sounded on bugle at 5:30 p.m.

- 6:00 p.m. will be announced by ringing of gong
 - " " " sounding of bugle
 - " " " ringing of gong
-

ty be had upon application to the Night Saloon
Dining Saloon after 10:30 p.m.

emptly; failure to do so causes inconvenience and annoyance.

are not on hand, must expect to wait until after the Third Sitting.

with the best field glasses obtainable, the passengers will be able to see this land for themselves. The farm land, coupled with the timber, is one of the principal resources of the new Townsite of Queen Charlotte, fully 30,000 acres, lying adjacent to and within four miles of the townsite. Much of this land is underlaid with the finest coal yet discovered in Canada. While the northern portion of Graham Island has not been fully prospected, discoveries of copper, gold, crude petroleum, asphaltum or mineral pitch, have been located and reported upon as among the island's resources. The Queen Charlotte Townsite Co. have arranged this excursion in order that these resources may be seen, and it is therefore unnecessary for the writer to say any more.

TUESDAY, MAY 11th.

Those of the passengers who are on deck early in the morning will have an opportunity of viewing the approach to the new town of Prince Rupert where part of the day will be spent in looking over the new townsite, harbor, etc.

Leaving Prince Rupert in the afternoon the Princess Charlotte will proceed southward, passing the mouth of the Skeena River, thence along Granville Channel, passing Lowe Inlet and Hartley Bay.

WEDNESDAY, MAY 12th.

Steamer will proceed leisurely southward through the Finlayson Channel, Mill Bank Sound, passing Bella Bella, Nainu, and in the afternoon Queen Charlotte Sound will be reached.

Wednesday night the steamer will be in the section which is passed in daylight on the Northbound trip.

The schedule has been arranged to give passengers as much daylight as possible in the splendid scenery along the B. C. Coast.

THURSDAY, MAY 12th.

Princess Charlotte should reach Vancouver early Thursday morning and after disembarking passengers will proceed to Victoria, which should be reached about noon.

Passengers for Seattle can proceed from Victoria to Seattle on the 4.00 p.m. steamer reaching Seattle at 8.30 p.m.

TABLE SEATS

Arrangements have been made to divide the passengers into three groups for the convenience of serving meals.

The grouping has been arranged according to place of booking—and Booking Agents have made all seating arrangements for each section, as shown on face of this booklet.

Meals will be served to each party at the hours shown on pages 3 and 4 and passengers are expected to be prompt to avoid delay and inconvenience to themselves and others.

Days	First Table	Second Table	Third Table
Saturday	Seattle	Vancouver	Victoria
Sunday	Victoria	Seattle	Vancouver
Monday	Vancouver	Victoria	Seattle
Tuesday	Seattle	Vancouver	Victoria
Wednesday	Victoria	Seattle	Vancouver
Thursday	Vancouver	Victoria	Seattle



