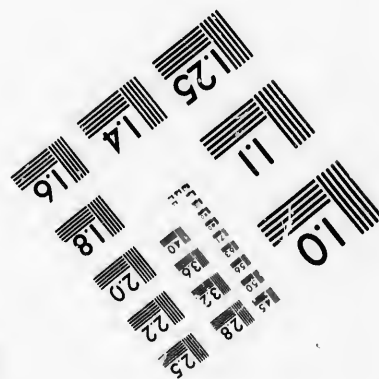
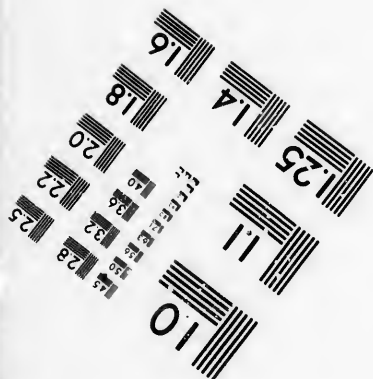
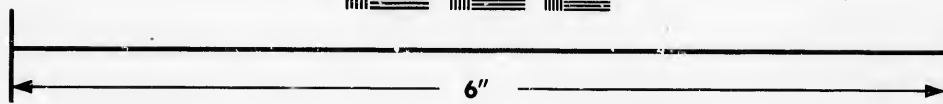
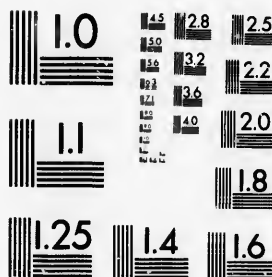


**IMAGE EVALUATION
TEST TARGET (MT-3)**



**Photographic
Sciences
Corporation**

23 WEST MAIN STREET
WEBSTER, N.Y. 14580
(716) 872-4503

**CIHM/ICMH
Microfiche
Series.**

**CIHM/ICMH
Collection de
microfiches.**



Canadian Institute for Historical Microreproductions / Institut canadien de microreproductions historiques

© 1986

Technical and Bibliographic Notes/Notes techniques et bibliographiques

The Institute has attempted to obtain the best original copy available for filming. Features of this copy which may be bibliographically unique, which may alter any of the images in the reproduction, or which may significantly change the usual method of filming, are checked below.

L'Institut a microfilmé le meilleur exemplaire qu'il lui a été possible de se procurer. Les détails de cet exemplaire qui sont peut-être uniques du point de vue bibliographique, qui peuvent modifier une image reproduite, ou qui peuvent exiger une modification dans la méthode normale de filmage sont indiqués ci-dessous.

- | | |
|--|--|
| <input type="checkbox"/> Coloured covers/
Couverture de couleur | <input checked="" type="checkbox"/> Coloured pages/
Pages de couleur |
| <input type="checkbox"/> Covers damaged/
Couverture endommagée | <input type="checkbox"/> Pages damaged/
Pages endommagées |
| <input type="checkbox"/> Covers restored and/or laminated/
Couverture restaurée et/ou pelliculée | <input type="checkbox"/> Pages restored and/or laminated/
Pages restaurées et/ou pelliculées |
| <input type="checkbox"/> Cover title missing/
Le titre de couverture manque | <input type="checkbox"/> Pages discoloured, stained or foxed/
Pages décolorées, tachetées ou piquées |
| <input type="checkbox"/> Coloured maps/
Cartes géographiques en couleur | <input type="checkbox"/> Pages detached/
Pages détachées |
| <input type="checkbox"/> Coloured ink (i.e. other than blue or black)/
Encre de couleur (i.e. autre que bleue ou noire) | <input type="checkbox"/> Showthrough/
Transparence |
| <input type="checkbox"/> Coloured plates and/or illustrations/
Planches et/ou illustrations en couleur | <input type="checkbox"/> Quality of print varies/
Qualité inégale de l'impression |
| <input type="checkbox"/> Bound with other material/
Relié avec d'autres documents | <input type="checkbox"/> Includes supplementary material/
Comprend du matériel supplémentaire |
| <input type="checkbox"/> Tight binding may cause shadows or distortion
along interior margin/
La reliure serrée peut causer de l'ombre ou de la
distorsion le long de la marge intérieure | <input type="checkbox"/> Only edition available/
Seule édition disponible |
| <input type="checkbox"/> Blank leaves added during restoration may
appear within the text. Whenever possible, these
have been omitted from filming/
Il se peut que certaines pages blanches ajoutées
lors d'une restauration apparaissent dans le texte,
mais, lorsque cela était possible, ces pages n'ont
pas été filmées. | <input type="checkbox"/> Pages wholly or partially obscured by errata
slips, tissues, etc., have been refilmed to
ensure the best possible image/
Les pages totalement ou partiellement
obscurcies par un feuillet d'errata, une pelure,
etc., ont été filmées à nouveau de façon à
obtenir la meilleure image possible. |
| <input checked="" type="checkbox"/> Additional comments:/
Commentaires supplémentaires: | [Printed ephemera] 1 sheet (verso blank) |

This item is filmed at the reduction ratio checked below/
Ce document est filmé au taux de réduction indiqué ci-dessous.

10X	14X	18X	22X	26X	30X
<input type="checkbox"/>	<input type="checkbox"/>	<input type="checkbox"/>	<input checked="" type="checkbox"/>	<input type="checkbox"/>	<input type="checkbox"/>
12X	16X	20X	24X	28X	32X

The copy filmed here has been reproduced thanks to the generosity of:

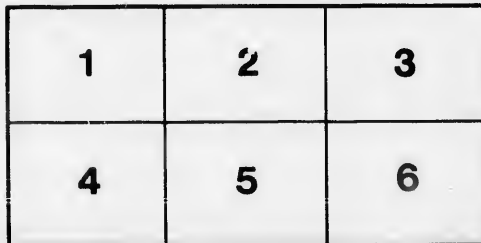
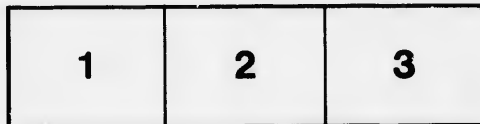
Douglas Library
Queen's University

The images appearing here are the best quality possible considering the condition and legibility of the original copy and in keeping with the filming contract specifications.

Original copies in printed paper covers are filmed beginning with the front cover and ending on the last page with a printed or illustrated impression, or the back cover when appropriate. All other original copies are filmed beginning on the first page with a printed or illustrated impression, and ending on the last page with a printed or illustrated impression.

The last recorded frame on each microfiche shall contain the symbol \rightarrow (meaning "CONTINUED"), or the symbol ∇ (meaning "END"), whichever applies.

Maps, plates, charts, etc., may be filmed at different reduction ratios. Those too large to be entirely included in one exposure are filmed beginning in the upper left hand corner, left to right and top to bottom, as many frames as required. The following diagrams illustrate the method:



L'exemplaire filmé fut reproduit grâce à la générosité de:

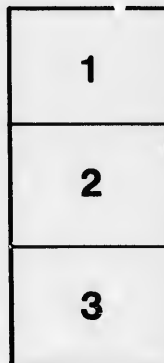
Douglas Library
Queen's University

Les images suivantes ont été reproduites avec le plus grand soin, compte tenu de la condition et de la netteté de l'exemplaire filmé, et en conformité avec les conditions du contrat de filmage.

Les exemplaires originaux dont la couverture en papier est imprimée sont filmés en commençant par le premier plat et en terminant soit par la dernière page qui comporte une empreinte d'impression ou d'illustration, soit par le second plat, selon le cas. Tous les autres exemplaires originaux sont filmés en commençant par la première page qui comporte une empreinte d'impression ou d'illustration et en terminant par la dernière page qui comporte une telle empreinte.

Un des symboles suivants apparaîtra sur la dernière image de chaque microfiche, selon le cas: le symbole \rightarrow signifie "A SUIVRE", le symbole ∇ signifie "FIN".

Les cartes, planches, tableaux, etc., peuvent être filmés à des taux de réduction différents. Lorsque le document est trop grand pour être reproduit en un seul cliché, il est filmé à partir de l'angle supérieur gauche, de gauche à droite, et de haut en bas, en prenant le nombre d'images nécessaire. Les diagrammes suivants illustrent la méthode.



THE
Commercial Bank of Canada.

PUBLIC NOTICE is hereby given, that a Special General Meeting of the Shareholders of the Commercial Bank of Canada will be held at its Banking House in the City of Kingston, on *Tuesday*, the Seventeenth day of December, A.D., 1867, at the hour of twelve o'clock, noon, for the purpose of considering and taking action upon the following specified objects—that is to say:—

I. To accept or reject, or to take advantage of all or any of the provisions of an Act to be obtained in the interval by the Directors of the Bank from the Parliament of Canada, which Act is intended to contain all or some of the following provisions:

- (1.) To extend the period of suspension of specie payments without forfeiture of the Bank's charter.
- (2.) To authorize the Directors of the Bank by Bye-law to reduce the Capital Stock of the Bank, and to raise additional Capital, on such terms as may be set forth in such Bye-law.
- (3.) To authorize the Directors to enter into an agreement with any other Banking Institution or Institutions for an amalgamation—and to determine upon the terms of such amalgamation, and the relative value of the Stock of the Bank and such other amalgamating Bank or Banks—and to agree upon such other terms for the conduct, management, and general relations of the amalgamated institutions, as the Directors of the Bank may think best,—such agreement not to be valid, until confirmed by the Shareholders of the Commercial Bank, and which confirmation may be obtained at the Special General Meeting now convened, or at any future special meeting.
- (4.) To contain a provision of a similar purport to the last foregoing, to be applicable to any such other amalgamating Bank or Banks—and also general provisions for more effectually carrying the intended amalgamation into effect, also as to the name of the amalgamated Bank, and either with or without power to increase or to make addition to the Capital Stock of the amalgamated Bank, or to that of either or any of the Banks so amalgamated—such increase of Capital to be sanctioned by a Special General Meeting of the Shareholders of the respective Banks.
- (5.) To contain a provision for a change of the head or principal office of the Commercial Bank, or such amalgamated Bank, to be sanctioned by the Shareholders last aforesaid.
- (6.) In the event of failure on the part of the Commercial Bank to raise additional Capital, or to amalgamate as aforesaid, or otherwise to continue its business, such act or acts to contain provisions, for vesting by a general assignment all the Estate and effects of the Bank in Trustees for the speedy liquidation of its liabilities, and for distribution of the surplus amongst the Shareholders—with special provisions and powers for such purposes—the Trustees to be named, and the assignment sanctioned at the Special General Meeting now convened.
- (7.) And further, such act or acts may contain permissive powers for the Commercial Bank to sell, and for any other Banking Institution to buy the assets of the Commercial Bank, and to assume its liabilities. The terms of any such arrangement to be confirmed at the presently convened Special General Meeting of the Shareholders of the Commercial Bank, or at any Special General Meeting and at a Special General Meeting of the Shareholders of the purchasing Bank.

II. In the event of the hereinbefore mentioned Act not being obtained, or in the event of the Shareholders of the Bank not agreeing to accept the provisions thereof, or if they shall otherwise think best, then one of the objects of the said special general meeting now convened, will be to consider and to take action upon the course to be pursued with respect to the position of the Bank's affairs, and if necessary to authorize a general assignment of the Bank's assets, to better discharge its liabilities.

Dated at the Commercial Bank of Canada, Kingston, October 31st, 1867.

By order of the Board,

C. S. ROSS, CASHIER.

1867
5

Commercial Bank of Canada.

BANK STOCK.

TO VOTE.

Know all Men by these Presents, that _____
of _____
do make, constitute and appoint _____ of
_____ my true and lawful Attorney for _____ and in
_____ name, and on _____ behalf, to vote at the meeting of Shareholders of the
Commercial Bank of Canada, for the purposes mentioned in the annexed notice,
with power to substitute and appoint such person or persons as _____ shall see fit,
to act as _____ Attorney or Attornies herein, and generally to do all lawful acts
requisite for effecting the premises, hereby ratifying and confirming all that _____
said Attorney, or _____ said substitute or substitutes, shall do therein, by
virtue hereof.

NOTE.—The words in italics may be expunged if desired.

In Witness Whereof, _____ have hereunto set
hand and seal, at _____ this _____ day of
_____ in the year of our Lord One Thousand Eight Hundred and _____

Signed and Sealed in the Presence of }

The EDITH and LORNE PIERCE
COLLECTION of CANADIANA



Queen's University at Kingston

