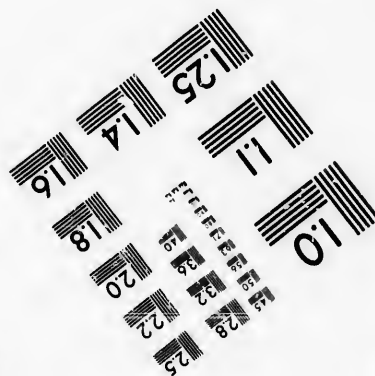
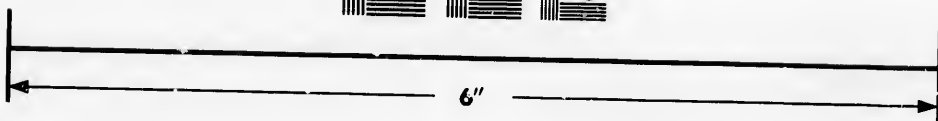
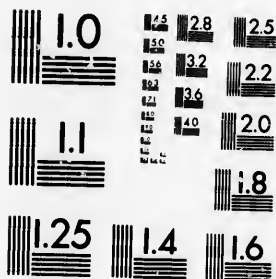


IMAGE EVALUATION TEST TARGET (MT-3)



Photographic
Sciences
Corporation

23 WEST MAIN STREET
WEBSTER, N.Y. 14580
(715) 872-4503

**CIHM/ICMH
Microfiche
Series.**

**CIHM/ICMH
Collection de
microfiches.**



Canadian Institute for Historical Microreproductions / Institut canadien de microreproductions historiques

© 1986

Technical and Bibliographic Notes/Notes techniques et bibliographiques

The Institute has attempted to obtain the best original copy available for filming. Features of this copy which may be bibliographically unique, which may alter any of the images in the reproduction, or which may significantly change the usual method of filming, are checked below.

L'Institut a microfilmé le meilleur exemplaire qu'il lui a été possible de se procurer. Les détails de cet exemplaire qui sont peut-être uniques du point de vue bibliographique, qui peuvent modifier une image reproduite, ou qui peuvent exiger une modification dans la méthode normale de filmage sont indiqués ci-dessous.

- ☐ Coloured covers/
Couverture de couleur
- ☐ Covers damaged/
Couverture endommagée
- ☐ Covers restored and/or laminated/
Couverture restaurée et/ou pelliculée
- ☐ Cover title missing/
Le titre de couverture manque
- ☐ Coloured maps/
Cartes géographiques en couleur
- ☒ Coloured ink (i.e. other than blue or black)/
Encre de couleur (i.e. autre que bleue ou noire)
- ☒ Coloured plates and/or illustrations/
Planches et/ou illustrations en couleur
- ☐ Bound with other material/
Relié avec d'autres documents
- ☐ Tight binding may cause shadows or distortion along interior margin/
La reliure serrée peut causer de l'ombre ou de la distorsion le long de la marge intérieure
- ☐ Blank leaves added during restoration may appear within the text. Whenever possible, these have been omitted from filming/
Il se peut que certaines pages blanches ajoutées lors d'une restauration apparaissent dans le texte, mais, lorsque cela était possible, ces pages n'ont pas été filmées.
- ☐ Additional comments:/
Commentaires supplémentaires:

- ☐ Coloured pages/
Pages de couleur
- ☐ Pages damaged/
Pages endommagées
- ☐ Pages restored and/or laminated/
Pages restaurées et/ou pelliculées
- ☒ Pages discoloured, stained or foxed/
Pages décolorées, tachetées ou piquées
- ☒ Pages detached/
Pages détachées
- ☒ Showthrough/
Transparence
- ☐ Quality of print varies/
Qualité inégale de l'impression
- ☐ Includes supplementary material/
Comprend du matériel supplémentaire
- ☐ Only edition available/
Seule édition disponible
- ☐ Pages wholly or partially obscured by errata slips, tissues, etc., have been refilmed to ensure the best possible image/
Les pages totalement ou partiellement obscurcies par un feuillet d'errata, une pelure, etc., ont été filmées à nouveau de façon à obtenir la meilleure image possible.

This item is filmed at the reduction ratio checked below/
Ce document est filmé au taux de réduction indiqué ci-dessous.

10X	12X	14X	16X	18X	20X	22X	24X	26X	28X	30X	32X
						✓					

The copy filmed here has been reproduced thanks to the generosity of:

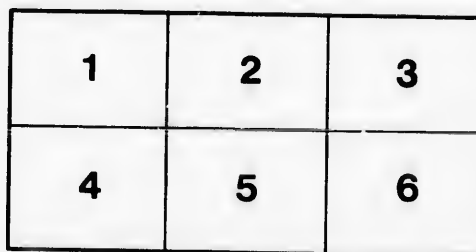
Douglas Library
Queen's University

The images appearing here are the best quality possible considering the condition and legibility of the original copy and in keeping with the filming contract specifications.

Original copies in printed paper covers are filmed beginning with the front cover and ending on the last page with a printed or illustrated impression, or the back cover when appropriate. All other original copies are filmed beginning on the first page with a printed or illustrated impression, and ending on the last page with a printed or illustrated impression.

The last recorded frame on each microfiche shall contain the symbol ➡ (meaning "CONTINUED"), or the symbol ▼ (meaning "END"), whichever applies.

Maps, plates, charts, etc., may be filmed at different reduction ratios. Those too large to be entirely included in one exposure are filmed beginning in the upper left hand corner, left to right and top to bottom, as many frames as required. The following diagrams illustrate the method:



L'exemplaire filmé fut reproduit grâce à la générosité de:

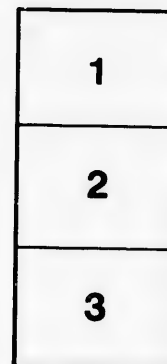
Douglas Library
Queen's University

Les images suivantes ont été reproduites avec le plus grand soin, compte tenu de la condition et de la netteté de l'exemplaire filmé, et en conformité avec les conditions du contrat de filmage.

Les exemplaires originaux dont la couverture en papier est imprimée sont filmés en commençant par le premier plat et en terminant soit par la dernière page qui comporte une empreinte d'impression ou d'illustration, soit par le second plat, selon le cas. Tous les autres exemplaires originaux sont filmés en commençant par la première page qui comporte une empreinte d'impression ou d'illustration et en terminant par la dernière page qui comporte une telle empreinte.

Un des symboles suivants apparaîtra sur la dernière image de chaque microfiche, selon le cas: le symbole ➡ signifie "A SUIVRE", le symbole ▼ signifie "FIN".

Les cartes, planches, tableaux, etc., peuvent être filmés à des taux de réduction différents. Lorsque le document est trop grand pour être reproduit en un seul cliché, il est filmé à partir de l'angle supérieur gauche, de gauche à droite, et de haut en bas, en prenant le nombre d'images nécessaire. Les diagrammes suivants illustrent la méthode.



44

GRAND
PROVINCIAL
EXHIBITION



OPEN TO THE WORLD

\$25.000
IN
PRIZES



SEPTEMBER 14 To 23
1882
MONTREAL

The EDITH and LORNE PIERCE
COLLECTION of CANADIANA



Queen's University at Kingston



WITH THE COMPLIMENTS OF
MAJOR L. C. HUGUET-LATOIR, M. A., N. P.,

1ST OR PRINCE OF WALES REGT. OF RIFLES.

ADDRESS:—36 McGill College Avenue,
MONTREAL,
CANADA.

PRIZE LIST

— OF THE —

Agricultural and Industrial Exhibition

— OF THE —

PROVINCE OF QUEBEC.

— OPEN TO THE WORLD —

TO BE HELD ON THE

EXHIBITION GROUNDS, MILE-END,

— IN THE —

CITY OF MONTREAL.

*Opening 14th September, 1882, at . . . M., and
closing 23rd September, at 2 P.M.*

*(The Show of Horses, Cattle, Sheep and Swine, will open
on 18th September.)*

\$25,000 IN PRIZES.

OFFICE OF THE PERMANENT EXHIBITION COMMITTEE;

76 St. Gabriel Street, Montreal.



MONTREAL PRINTING COMPANY, Printers

H

Th

E
E
L
C. V

Ho

Hon.
P. B.
S. N.
J. M.
A. Ca
Aug.
James
E. J.
J. N.

ORGANIZATION.

PATRON.

HIS HONOR THE LIEUT.-GOVERNOR OF THE PROVINCE OF QUEBEC.

VICE-PATRONS.

THE LIEUTENANT GOVERNORS OF THE PROVINCES OF THE DOMINION

THE HONBLE. THE MINISTER OF AGRICULTURE.

HONBLE. E. DIONNE, COMMISSIONER OF AGRICULTURE.

HONORARY DIRECTORS.

QUEBEC.

Hon. J. A. Chapleau, *Premier of the Province.*

Hon. J. L. Beaudry, M.L.C., *Mayor of the City of Montreal.*

L. H. Massue, Esq., M.P., *President of the Council of Agriculture.*

C. W. Carrier, Esq., *President of the Council of Arts and Manufactures.*

COUNCIL OF AGRICULTURE

— OF THE —

PROVINCE OF QUEBEC.

HON. E. DIONNE, *Commissioner of Agriculture and Public Works,*

HON. GEDEON OUMET, *Superintendent of Public Instruction.*

L. H. MASSUE, Esq., M. P., *President*

ED. J. DEBLOIS, *Vice-President.*

G. LECLÈRE, *Secretary.*

Hon. L. Beaubien.

P. B. Benoit, Esq., M. P.

S. N. Blackwood, Esq.

J. M. Browning, Esq.

A. Casavant, Esq.

Aug. Casgrain, Esq.

James Cochrane, Esq.

E. J. DeBlois, Esq.

J. N. E. Faribault, Esq.

L. N. Gauvreau, Esq.

J. L. Gibb, Esq.

A. Guilbault, Esq.

I. J. A. Marsan, Esq.

Rev. F. Pilote.

Alex. Somerville, Esq.

E. Casgrain, Esq.

Hon. J. J. Ross.

Rev. S. Tassé.

REFEREE AND CONSULTING VETERINARY SURGEON.

D. McEachran, F.R.C.V.S.

ES.
tary.

Nov. 1977

GRAND PROVINCIAL EXHIBITION, MONTREAL,

SEPTEMBER 14th TO 23rd, 1882.

COMPETITION OPEN TO THE WORLD.

INTRODUCTION.

10.-

The unparalleled success of the two last Exhibitions held in Montreal, and the bright prospects for the present year should serve to attract a larger number of Exhibitors and Visitors than on any previous occasion. The Committee, have decided to excel any previous Exhibition held in the Dominion, having increased the Prize List and the Premiums; extended improvements, both on Grounds and Buildings, have been effected, and the best possible facilities will be provided for reaching the grounds. The Permanent Exhibition Committee have added to the Prize List a Special Department for Horticulture and Fruit, in which liberal prizes are offered.

The pages which follow, containing the Premium List of the Exhibition sufficiently indicate that the Exhibition Committee has not lacked in energy or effort, and that the display of 1882 may be expected to far exceed that of 1881. Special features and attractions will be added; and what proved to be interesting features last year will be repeated upon a much more extensive scale.

The sum of Twenty-five Thousand Dollars has been appropriated for distribution in Premiums, thus securing a handsome money return to successful Exhibitors; though large as is the sum thus appropriated it is far less than the business benefits which accrue to Exhibitors taking premiums at the Montreal Grand Exhibition, where an award of superiority gives the animal or article shown, a rank not otherwise obtainable.

427/2P Special, 2K 506 104 316

GENERAL ARRANGEMENTS.

The Exhibition will open at 9 a.m., on Thursday, the 14th September, and continue open until two o'clock p.m., on Saturday, the 23rd September, closing daily at 6 p.m.

All Articles for Exhibition should be in place *on the day of opening*, (14th September) except Horses, Cattle, Sheep and Swine, which must come in and be in position by *noon on the 18th*, in order that the prizes in all Departments may be awarded without delay.

Officers and employees must be at their place of duty before the opening of the gates.

All vehicles for the transportation of supplies, &c., and all persons not entitled to remain, must leave the ground before 9 o'clock a.m., each day.

A strong Police Force will be on the grounds to arrest all violators of the law, or of the rules of the Permanent Exhibition Committee.

The Superintendents of Departments will see that their divisions are in proper order for the reception of exhibits and for the convenience of Exhibitors and Visitors.

The Superintendents of Departments will also be vested with all the powers and prerogatives with which constables are invested, so far as acts or offences committed with reference to, and in connection with the Exhibition are concerned; and they shall be responsible to the Executive Committee for the proper management of their departments.

Superintendents of Departments will see that no property will leave their charge without a ticket corresponding with the number of the entry card, which ticket will be surrendered by the Exhibitor on delivery of the goods.

Every facility will be afforded, and every courtesy extended to Exhibitors; but no responsibility for transportation, damages, accidents, or loss of any character, will be assumed.

A first-class Band of Music will be present daily during the Exhibition.



PROGRAMME.

The Exhibition will be open to the public on Thursday, the 14th September, at 9 o'clock a.m., and will continue open each day from 9 o'clock a.m., till 6 o'clock p.m., until the afternoon of Saturday, the 23rd of September. The Exhibition will be considered officially closed at 2 p.m., on Saturday the 23rd September; after which exhibitors must remove all their property from the Grounds and Buildings. No removal will, under any circumstances, be allowed before the close, except by special permission of the Committee.

His Honor the Lieut. Governor of the Province of Quebec will formally open the Exhibition, when it is expected that several Governors of the neighbouring States, and Lieut. Governors of the different Provinces of the Dominion of Canada, and many other distinguished persons, will be present.

The Agricultural, Horticultural and Industrial portions of the Exhibition, including all Classes of Manufactures, Implements, Machinery, Fine Arts, Ladies' Works, Poultry, Agricultural and Dairy Products, Fruits and Vegetables, &c., will be on view from the opening, on the 14th, to the close. Horses, Cattle, Sheep and Swine will be in position (four days later) on the 18th, after which every branch of the Exhibition will be in full operation.

GENERAL RULES AND REGULATIONS.

Intending exhibitors and visitors are particularly requested to read carefully and consider the following Rules and Regulations governing the Exhibition, which will be, in all cases, strictly enforced.

ADMISSION TO THE GROUNDS.

The price of admission will be **25 cents** each time of entering. The admission will be by means of registering turnstiles, and **each person must be provided with a 25 cent piece, in silver, before entering the Turnstile House.**

Exchange Offices are provided near the entrances, where the proper change can be obtained.

Necessary attendants upon stock and machinery, &c., will be furnished with special passes, on applying to the Secretary's office on

1569363

the grounds. Each pass will bear the name of the person to whom it is issued, and if presented by any other person will be forfeited.

Attendants' tickets will be allowed only where absolutely indispensable.

No checks will be given to return to the Grounds.

One Exhibitor's ticket, admitting an exhibitor only *once* each day, and *positively not transferable*, may be purchased by any individual exhibiting, and if a firm, by any one member thereof, at the Secretary's office, on the grounds, for \$1.00 for the time of the Exhibition.

The entry tickets upon animals or articles will admit the person bringing them to the Show Grounds for exhibition, along with such animals or articles, without the use of any other ticket. Afterwards, such parties must be provided with proper passes, as above.

Editors and Reporters, actually employed and duly accredited by the papers they officially represent, will be furnished with special tickets on application and a roll of their names and residences preserved.

In the case of weekly papers, not more than two tickets will be issued to each newspaper.

ENTRIES.

All entries in the Agricultural Department must be made on printed forms, which may be obtained from the Secretary of the Council of Agriculture, or from the Secretaries of all County Agricultural Societies and in the Industrial Department, from the Secretary of the Council of Arts and Manufactures. These forms are to be filled up and signed by the exhibitor, and sent to the respective Secretaries, at Montreal, on or before *Friday, 1st September*.

The entry fee must in all cases be forwarded with the entry. No entry will be accepted unless this is done.

When Entries are made, great care should be observed to have the name of the exhibitor and the Post-office address entered in full, with the number of residence and street, if in City. This will be of assistance to the Treasurer in prompt payment, and will serve to avoid delays.

In order to prevent unnecessary labour and loss of time, exhibitors are particularly requested to **enter only such articles as they intend to exhibit.**

Exhibitors will please take notice that it is absolutely required that the entries be made at the date above

mentioned, in order to afford sufficient time to examine the entry papers, and to correspond with parties, when necessary, for the correction of errors and omissions; and no exception will be made to this rule on any consideration whatever, except by special approval of the Committee.

In the Live Stock Classes, the entries must, in every instance, be made in the name of the *bona fide* owner, and unless this rule be observed no premium will be awarded, or if awarded, will be withheld. If any person shall exhibit any animal of which he is not the *bona fide* owner, he shall forfeit any premium which may be awarded him, and be precluded from exhibiting in future.

In all the other Classes, entries must be made in the names of the producers or manufacturers only, and by such producers themselves, or their agents duly authorized. If any person, other than the authorized agent, shall enter an article for exhibition, as produced or manufactured by himself, when it has not really been so, he shall forfeit any premium which may be awarded the article, and be precluded from exhibiting in future.

No person shall be allowed to enter for exhibition more than one specimen in any one section of a Class, unless the additional article be of a distinct named variety or pattern from the first, except by special permission of the Committee. This rule not to apply to animals, but to apply to all kinds of grain, vegetable products, manufactured articles, &c., in which each additional specimen would necessarily be precisely similar to the first.

EXTRA ENTRIES.—Every article must be entered under some one of the headings in the regular list, when possible; but if any article is of a different character from anything specified in the list, it may then be entered in the Extra section of that class with which it most nearly corresponds. No article, however, will be allowed to be entered as an Extra for want of sufficient quantity or number, or any other similar defect, when of the same kind or variety as anything named in the list; in such a case the article cannot be exhibited.

On the entry of each animal or article, a card will be furnished the exhibitor, specifying the class, the section, the number of the entry, and the name of the exhibitor, **which card must remain attached to the animal or article during the Exhibition.**

In all cases the right is reserved to reject entirely or accept conditionally any entry or application; and under no circumstances will

articles which are offensive by reason of their odor or appearance, or which are dangerous by reason of their combustible or explosive character, be admitted; and if any such be introduced by an exhibitor through misapprehension or otherwise, they may be removed by order of the Committee.

Exhibitors will confer a great favour on the officers of the Exhibition Committee by making their entries at as early a date as possible.

Articles or stock cannot be removed from the Exhibition before its close, unless such removal has the special approval of the Committee;

No Products of convict labour will be received for exhibition or competition.

ENTRY FEES.

The charges for exhibiting at this Exhibition will be by fees and charges for space, which have been placed at the lowest possible figure, as follows:—

Horses—Entrance free; \$1 per head for stabling.

Cattle—Entrance free; 50 cents per head for stalls.

Sheep—Entrance free; 25 cents per head for pens.

Pigs—Entrance free; 25 cents per head for pens.

Poultry—25 cents each entry.

Agricultural Implements—50 cents each entry.

Agricultural and Dairy Products—Ten entries and under, 50 cents; over ten entries, \$1.

Horticultural Entries—Ten entries and under, 50 cents; over ten entries, \$1.

INDUSTRIAL DEPARTMENT—\$1 for each class.

Machinery Hall—\$1 per foot, frontage.

Ladies' Work—Five entries and under, 50 cts.; over five entries, \$1.

Domestic Manufactures—Five entries and under, 50 cts. Over five entries, \$1.

In all other Departments or Classes than those above-named, the fee will be for each Class \$1.

Fees and charges for space must in all cases accompany the entry.

APPLICATIONS FOR SPACE.

Exhibitors requiring space in the Industrial Department, Carriage Building, or in the Machinery Hall, must make application for the same at the time of making their entries. Forms for application can be procured from the Secretary of the Industrial Department, 76 St. Gabriel St., Montreal.

Applications for space elsewhere will also be received and considered by the Committee up to Wednesday, 30th August, from persons who may be desirous of making special exhibits, either in competition for prizes or for exhibition only.

The Committee reserve the right to sell such spaces as they consider desirable, of which due notice will be given.

Parties desiring special locations are requested to make application for the same in writing as early as possible.

PREPARATORY WORK.

On and after Thursday, 7th September, exhibitors, their agents, and workmen, will be admitted to the grounds and buildings for the purpose of making preparatory structures, or getting machinery and implements into position.

DELIVERY OF ARTICLES, AND CHARGE OF SAME WHILE ON EXHIBITION.

All articles in the Industrial Department including Machinery, Stoves, Ladies' Work, &c., &c., must be in position in their respective Departments on the grounds by 5 p.m., on Wednesday, 13th of September.

Horses, Cattle, Sheep and Swine, must be delivered on the grounds on Monday, the 18th of September, but in no case will be received later.

All specimens for exhibition in the Fine Arts Department, must be delivered not later than noon on Wednesday, 13th of September, in order that they may be properly classified and hung previous to the day of opening.

Articles or animals arriving after the above dates will not be allowed to compete. It is desirable that exhibitors of Machinery and other heavy articles should have their exhibits on the grounds and placed in position the week preceding the opening of the Exhibition, in order to avoid confusion.

All boxes, wrappings, and other packing material, must be cleared away, and everything be in proper order before 6 p.m. on Wednesday, 13th of September.

Exhibitors must provide for the delivery of their articles upon the Exhibition Grounds. The Committee cannot, in any case, make provision for their transportation, or be subjected to any expense therefor,

either in their delivery at, or return from, the Grounds. All the expenses connected therewith must be provided for by the exhibitors themselves.

Articles not accompanied by their owners may be addressed to the care of the Secretary of the Department for which they are intended, who will receive them on their being delivered at the Grounds ; but in no case will such articles be placed on exhibition except by the owners or their authorized agents. *All charges (including cartage) must be PRE-PAID on articles thus sent.*

Exhibitors on arriving with their articles, will apply at the Secretary's office, when they will be informed where the articles are to be placed.

Exhibitors will, at all times, give the necessary personal attention to whatever they may have on Exhibition, and at the close, take entire charge of the same.

Articles placed on exhibition must not be removed until the close, except by permission of the Committee. Every facility will be afforded for the transaction of business by taking orders, but no delivery of articles sold can be made on the premises during the exhibition, except by special arrangement with the Committee.

Although the Committee will take reasonable precaution to ensure the safety of articles sent to the Exhibition, yet they wish it to be distinctly understood that the owners themselves must take the risk of exhibiting them ; and that should any articles be accidentally injured, lost, or stolen, the Committee will give all the assistance in their power towards the recovery of the same, but **will not make any payment** for the value thereof.

At the close of the Exhibition, exhibitors must take charge of their exhibits, and remove the same as early as possible.

LIVE STOCK.

New and commodious Buildings are provided upon the grounds for all Live Stock. Hay and grain for Horses, Cattle, Sheep, and Pigs will be for sale upon the grounds at reasonable prices. Exhibitors will please report at once if exorbitant prices are exacted.

AGRICULTURAL IMPLEMENT BUILDING.

The Agricultural Machinery Department comprises four magnificent buildings communicating with each other by means of spacious corridors; and two of these buildings are specially reserved for machinery in motion and amply provided with shafting underneath the flooring. The shafting is $2\frac{3}{8}$ inches, exact diameter, with a speed of 80 revolutions per minute. The other two buildings with their corridors will be reserved for the display of agricultural machinery requiring no motive power.

Apart from these buildings, exhibitors who prefer exhibiting their machines in open air can obtain all the space they may require.

As there is no extra charge for space in this Department (the entry fee being only *one dollar*), manufacturers of agricultural implements will easily understand the immense advantage of exhibiting under such favorable circumstances, and the Committee have reason to expect that this Exhibition will be the best of its kind in the Dominion.

Entries must be made before the 1st of September.

The Committee beg to draw the attention of exhibitors to the paragraph on page 14 relative to supplying pulleys, counter shafting, &c., which equally applies to exhibitors in the department of Agricultural Implements and Machinery.

AUCTION SALES OF CATTLE AND LIVE STOCK.

With a view of affording every facility to exhibitors wishing to dispose of Live Stock, it has been determined to hold *Auction Sales on the Exhibition Grounds during the Exhibition.*

The dates of the sales, with full particulars, will be announced later.

INDUSTRIAL DEPARTMENT.

The prize list in this Department has been framed with a special view to securing a full exhibit in every branch of Industry, and while the Exhibition is in most Classes open to the World, in some the premiums are open to Canadian manufacturers only.

Manufacturers are required to furnish all information which the Judges may ask for, and their decision will be based on the combination of quality, style, and price, and the adaptation of the article to the purpose or purposes for which it is intended.

Manufactured articles, which have been awarded prizes at Provincial Exhibitions in former years, shall not be entered in competition for the prizes named in the Prize List for this year, but shall be awarded diplomas, if, in the opinion of the Judges, such articles are superior to any others exhibited, and are deemed worthy of the same.

PROCESSES OF MANUFACTURE.

With a view of encouraging, as much as possible, the display of processes of manufacture in various branches of industry, the Machinery Hall has been considerably enlarged. As the driving engine will be in operation during the entire time of the Exhibition, it is to be hoped that manufacturers will see it to be to their interest to show some of their manufactures or products, in actual process of manufacture. This, while greatly contributing to the interest of the Exhibition, would most undoubtedly, result beneficially to exhibitors themselves.

MACHINERY HALL.

All machinery in motion, except portable, must be exhibited in the Machinery Hall.

All exhibits of machinery in this building must be placed in motion, if possible, and kept in operation at regular work.

For this purpose ample space and power is provided. The driving engines will be in operation and in running order from the opening day till the close of the Exhibition. Loose pulleys must be furnished by exhibitors, and as the main shafting in this Hall must not be interfered with or taken apart, pulleys to be used must be made in halves, turned and accurately balanced, and should have the owner's name plainly marked on the inside of the rim. Counter shafts, hangers and belts must be furnished by exhibitors.

The particular attention of manufacturers of Machinery is called to the fact that the capacity of the Machinery Hall has been largely increased, and that men and special facilities are now offered in this Department.

The charge for space in this building is \$1 per foot frontage.

Two lines of shafting are provided; the diameter of which is 3 inches, exact diameter. The speed of both lines is 160 revolutions per minute. Exhibitors will please govern themselves accordingly.

No pulley over 3 feet in diameter can be put on the main shaft in the Machinery Hall. Exhibitors requiring greater speed may provide themselves with counter shafts.

Intending exhibitors will greatly oblige by sending in their entries before the date mentioned, viz., 1st of September, as the Committee will thus be enabled to apportion a certain space to each one.

Steam engines and machinery operated thereby will be under the care of a special Superintendent. In order to avoid accidents, his orders must be strictly obeyed.

FINE ARTS DEPARTMENT.

All entries in this Department will be received subject to approval by a Committee of Selection, if so desired.

The Committee reserve the right to reject any work which does not come up to the required standard of excellence, and the entrance fee,

Every work must be the work of the exhibitor, and bear the artist's signature.

A certain space will be reserved in the case of exhibits illustrating the course of Industrial Art Education in public schools.

The name and age of the Exhibitor of Drawings should appear on the face of each specimen.

All drawings should be labelled upon their face, "From Flat Copy," "From Dictation," "Memory," "Object Drawing," "Perspective," "Geometrical Forms," or "Original Designs," as the case may be. Designs should be labelled "Entirely Original," "Original Combination," or "Original with given Elements."

All specimens of penmanship should be prepared by copying some printed matter. The exhibitor need not be limited as to the number of trials, but in no case should the specimen presented be a copy of a specimen prepared by some one else. The design is to show the ability to write from dictation or from the printed page.

No specimen of penmanship should contain less than four lines.

LADIES' WORK.

All articles competing in this class must be the work of the exhibitor, strictly the production of ladies, and entered in the name of such.

Articles which have been awarded prizes at previous exhibitions cannot be entered in competition for the prizes named in the Prize List for this year.

RAILWAYS, STEAMBOATS, AND CUSTOMS.

Favorable arrangements have been made with all the Railroad and Steamboat Companies for the conveyance of passengers and articles to and from the Exhibition at greatly reduced rates.

Arrangements have also been made with the Customs Department for the admission of articles from foreign countries for exhibition, free of duty, on giving the customary bond.

PROTESTS

Protests against an award must be made in writing to the Secretary, and *before noon on the day following* the affixing of prize cards, after which no protests will on any account be received.

All complaints should be made to the Secretaries *in writing*.

PAYMENT OF PRIZES.

Persons entitled to cash premiums must apply for them at the Secretary's office, who will give *Orders on the Treasurer* for the amount. These orders must be endorsed, as they will be payable to *order*, not to *bearer*, and on presentation to the Treasurer, properly endorsed, will be paid either in cash, or by cheque on the Bank.

The Treasurer will be prepared to commence paying the premiums at his office on the grounds, *for all parties residing outside the City*, on Saturday the 23rd, after the close of the Exhibition till 6 p. m. Those residing *in the City* will receive their premiums at the Secretary's office in town, on the following Monday, and subsequent days, of which due notice will be given.

Outside parties having prizes awarded them, are particularly requested to apply for them *before leaving Montreal*, or to leave a written order with some person to receive them, stating the Classes in and articles for which prizes are claimed.

Orders for premiums not applied for as above. will be given by the Secretary, and the amount forwarded by the Treasurer, on receipt of proper instructions.

All persons to whom prizes are awarded, must apply to the Secretaries of the Committee for orders for payment thereof, on or before the 30th day of November following the Exhibition, or such prizes will be forfeited.

MEDALS AND DIPLOMAS.

Medals and Diplomas will be awarded *in lieu of Money Prizes* when desired by exhibitors, and approved by the Permanent Exhibition Committee, as follows:

Gold Medal.—For original inventions deemed by the Committee of sufficient merit, and for Collections representing the leading enterprises and most important Industries of the Dominion, such as in the Classes for Live Stock, Agricultural Implements, Machinery, Textile Fabrics, &c., &c., in which the excellence of the exhibit, or the aggregate of prizes awarded to the exhibitor, will be considered sufficient by the Committee.

Silver Medal.—In lieu of first prizes, (not under \$20), and for important Industries, shewn in process of manufacture at the Exhibition, in cases where the exhibit is deemed by the Committee of sufficient merit.

Bronze Medal.—In lieu of first prizes of lesser value, and under the same conditions as for silver medal.

Diplomas will be awarded, at the discretion of the Committee.

Applications for Medals in lieu of money prizes, must be made in writing to the Secretaries before the close of the Exhibition.

The Diplomas and Medals awarded will be prepared immediately, and delivered with as little delay as possible.

JUDGES.

The Judges will be appointed by the Committee, and will receive a circular informing them of the fact, and inviting them to act.

In case any person accepts as Judge, and finds he cannot fulfil the duties, he will please notify the Secretary immediately of such inability, that all vacancies may be promptly filled.

No person will be allowed to act as Judge who is in any way interested in the articles to be examined.

Judges in all Classes, except in the Agricultural Department, are requested to report themselves at the Secretary's office, on the grounds, presenting their circular of appointment, at 9 o'clock a.m., on Friday, 15th September, when they will be furnished with badges.

Judges on Horses, Cattle, Sheep and Swine, are requested to report themselves at the Secretary's office, on the grounds, presenting their circular of appointment, at 9 o'clock a.m., on Monday, 18th September.

Judges are requested to inform the Secretary of their presence, and apply to him in all cases of doubt or difficulty.

It is desired that all the Judges of each Class go together to hand in their report, instead of sending it by one of their number, in order that cases of error or doubt may be more promptly and easily made right.

Judges will please sign and hand in their list of awards to the Secretary as soon as possible. They are requested to report fully upon all objects of interest and value, and to make such recommendations to the Committee as circumstances or their experience may suggest.

In the absence of competition in any section, or if the stock or articles exhibited be of inferior quality, the Judges will award only such premiums as they think the articles deserving of. They will exercise their discretion as to whether they will award the first, second, third, or any premium.

In addition to the stated premiums offered for articles enumerated in the list, the Judges are authorised to recommend to the Committee premiums for such articles, not enumerated, as they may consider worthy, and the Committee, if they approve of the recommendation, will determine the amount of premium. Judges are not to award medals other than those mentioned in the Prize List. The Judges may also distinguish such animals or articles as they consider deserving of notice, but which have not received prizes, by ticket with the words "Highly Commended," or "Commended," upon them. These tickets will not entitle the holder to any money payment.

Under "Extras" in each of the Classes, when more than one entry of the same kind of article has been made, they will be judged as in competition for first and second prizes, the same as though they had been in regular sections, and when but one such entry has been made, the article, if worthy, shall be awarded a first or second prize. The Judges, however, are instructed **not to award prizes** in either the "Regular" or "Extra" sections of any Class, unless the articles come up to the desired "standard of excellence." No award of prize for Extras will be paid until sanctioned by the Committee.

Each award must be written in a plain, careful manner, on the blank page opposite the number of the entry in the entry book.

In the Fine Arts and Industrial Departments, Diplomas may be awarded, in addition to the money prizes, to any specimen evincing great skill in its production, or deemed otherwise worthy of such a distinction, on its being recommended by the Judges, and approved of by the Committee, to whom all such matters shall be referred.

Exhibitors can ascertain from the Superintendents of the several Departments when the Judges may be expected to examine their animals or articles. No complaint or appeal based upon the statement that the Judges have overlooked animals or articles, will be considered.

The Judges are instructed, in the execution of their duties, to be careful to act with the most rigid impartiality, and make their entries in a clear and conspicuous manner, in all cases of doubt or difficulty referring freely to the Secretary, or to the Committee.

Any person who shall attempt to interfere with the Judges while in the discharge of their duties, or who shall afterwards, on the Exhibit on Grounds, use any contemptuous or abusive language to any Judge, Referee, or other person engaged in an official manner, in consequence of any award made by him, shall forfeit his right to any premiums to which he might otherwise be entitled, and shall be excluded from exhibiting for one year thereafter. Judges are particularly requested to immediately report any breach of this rule.

Upon the discovery of any fraud, deception, or dishonest practice, either in the preparation, ownership, or of any representation concerning any animal or article exhibited, which may have affected, or may have been intended to affect, the decision of the Judges, the Committee have the power to withhold the payment of any prize awarded, and may prohibit any such party or parties from exhibiting in any class for one or more years, and may also publish the names of such persons or not, as may be deemed most expedient.

MISCELLANEOUS.

Exhibitors must make themselves acquainted with the Prize List Regulations and requirements, and be sure to what classes and divisions their entries properly belong.

If any person, through ignorance of the regulations, shall bring articles to the Exhibition without having entered them at the proper time, the same may, in the discretion of the Committee, be allowed to be brought upon the grounds, and so placed that they may be examined by the public, but shall not be classified, nor shall any official examination of them be made or premiums awarded.

Where space has been awarded to any exhibitor, the Committee reserve the right, in case any such exhibitor shall fail to make or maintain a creditable display, to declare the space allotted to him forfeited.

The Committee reserve the right to prescribe the dimensions of all signs, and generally to direct the arrangement of articles on exhibition, so far as the same may be necessary to secure harmony and an attractive appearance.

All prize cards which have been affixed must be displayed during the Exhibition. Any infraction of this rule will incur the forfeiture of any premium awarded.

The contractors for the supply of refreshments at the Restaurants, Fodder, &c., and all persons keeping refreshment stands, must lay in their supplies before 8.30 o'clock a.m. each day.

The Committee on being made aware of any fraud having been committed by any exhibitor, in the entry of any stock or goods in competition for prizes at any exhibition, have the power of withholding the payment of any prizes that may have been awarded by the Judges to such exhibitor, on such fraudulent or any other entries made at any such Exhibition.

If any person wilfully injures or destroys any property within the Exhibition Grounds, or hinders or obstructs the officers or servants of the Committee, or any policeman or constable duly appointed, in the execution of his duty, or gains admission to the said grounds contrary to the rules, he shall be liable to a fine of not less than one nor more than twenty dollars.

The officers of the Committee shall enforce these Rules, and also prohibit and prevent all kinds of gambling, or mountebank performances, exhibitions or shows, and also regulate or prevent the huckstering or trafficking in fruits, goods, wares or merchandise on the Exhibition Grounds, or within three hundred yards thereof; and any person who, after due notice of such rules, violates the same, shall be liable to be removed by the officers, or policemen.

Lessees of Ground, Booths, and Stands will be protected as far as possible in their rights, and also against infringement on the part of unauthorized persons; but will forfeit their claims and rights when abusing them.

Peddlers or salesman of any kind of articles, not entered and placed on exhibition, must first procure permits from the Secretary, and shall present them when required to do so by any member of the Committee or any officer thereof.

All questions not covered or provided for by these Rules, shall be submitted to the Exhibition Committee.

FIRE AND POLICE PROTECTION.

Every possible precaution will be made to guard against fire; and with the precautions taken it is believed the danger of such an occurrence is very remote, but exhibitors desiring insurance must give the matter their personal attention.

An ample police force, detailed for the purpose by the city, will be on duty night and day during the continuance of the Exhibition. A full corps of watchman will also be present at all times; but exhibitors are expected to exercise constant supervision over the articles on exhibi-

tion, as the Committee will not be responsible for loss or damage by theft, fire or otherwise. Small and valuable articles should be exhibited in show-cases, which may be securely locked when desirable.

INQUIRIES.

Inquiries as to the Exhibition and its arrangements before the opening should be addressed to the Secretaries, at Montreal. During the Exhibition, inquiries may be made at the Business Office, and every officer will, when applied to, either furnish the information sought or refer the question to the proper officer. The officers may be known by their respective badges.

THE PRESS.

Ample accommodation will be provided for members of the Press, and all necessary information will be promptly furnished them.

TELEGRAPH AND POST OFFICES.

The Great North Western Telegraph Company will have offices on the grounds; and a Post office will also be provided for the delivery and despatch of letters. Telephone communication will also be established with the City.

VISITORS.

Visitors may rest assured of finding on the grounds everything necessary to the convenience and comfort of young or old, during the entire day. Ample Restaurants and Lunch Rooms, managed by experienced caterers, and under the supervision of the Committee, as to price and quality of food, will serve meals and refreshments during hours of exhibition at reasonable rates. Baggage rooms for the deposit of satchels, cloaks, &c., and in charge of responsible parties, are conveniently located for the accommodation of visitors. The hotels of the city, ample for any occasion, will adhere to their regular rates; and the city authorities will co-operate with the officers of the Committee in every practicable manner, to ensure the safety and contribute to the pleasure of visitors.

HOW TO REACH THE GROUNDS.

The grounds are most beautifully located on Mount Royal Avenue, on the north-western outskirts of the city, and from thence a splendid view of Montreal, the River St. Lawrence. and Mount Royal Park, with the surrounding country, can be obtained. They are easy of access, and can be reached in a few minutes by the Street Railway Cars, Omnibuses and Hackney Carriages.

Read the above Rules carefully and send in your Entries
as early as possible, and be sure that all
Fees accompany the same.

S. C. STEVENSON,
Sec'y Industrial Dept.

G. LECLERE,
Sec'y Agricultural Dept.

OFFICE, 76 ST. GABRIEL STREET, MONTREAL.



1.
2.
3.
4.
5.
6.
7.
8.

1.
2.
3.
4.
5.
6.

by t

oyal Avenue,
e a splendid
al Park, with
y of access,
ailway Cars,

ur Entries
all:

tural Dept.
L.

PRIZE LIST.

AGRICULTURAL DEPARTMENT.

Live Stock. Implements, Agricultural Products, &c.

COMPETITION OPEN TO THE WORLD.

HORSES.

*Ages of Thoroughbred Horses to date from 1st of January, all other
breeds from the 1st of May.*

CLASS 1.—Thoroughbred Horses.

(Pedigree to be produced in this class.)

1. Stallion, 4 years old and upwards	\$30	\$25	\$15
2. Stallion, 3 years old	25	15	10
3. Stallion, 2 years old	15	10	5
4. Yearling Colt	10	6	4
5. Filly, 3 years old	15	10	5
6. Filly, 2 years old	12	8	5
7. Yearling Filly	8	6	4
8. Brood Mare with Foal by her side	20	12	6

CLASS 2.—Clydesdales pure bred.*

1. Stallion, 4 years old and upwards	\$30	25	15
2. Stallion, 3 years old	25	15	10
3. Stallion, 2 years old	15	10	5
4. Yearling Colt	10	6	4
5. Filly, 3 years old	15	10	5
6. Filly, 2 years old	12	8	5

* The pedigree to be approved of by the Judges ; if they cannot agree, by the Referee, unless entered in a recognized Clydesdale Stud Book.

SECT.

	1st	and	3rd
7. Yearling Filly	8	6	4
8. Brood Mare with Foal by her side	20	12	6
9. Matched Team (Geldings or Mares) in harness	20	15	10

CLASS 3.—Percherons.

1. Stallion, 4 years old	\$30	25	15
2. Stallion, 3 years old	25	15	10
3. Stallion, 2 years old	15	10	5
4. Yearling Colt	10	6	4

CLASS 4.—Suffolks.

1. Stallion, 4 years old and upwards	\$30	25	15
2. Stallion, 3 years old	15	15	10
3. Stallion, 2 years old	15	10	5
4. Yearling Colt	10	6	4

CLASS 5.—Roadster Horses for Driving.

1. Stallion, 4 years old and upwards	30	20	10
2. Stallion, 3 years old	20	15	10
3. Stallion, 2 years old	15	10	5
4. Filly, 3 years old	15	10	5
5. Filly, 2 years old	12	6	4
6. Brood Mare with Foal by her side	20	15	10
7. Pair Matched Horses (geldings or mares) in harness	20	15	10
8. Single Horse (gelding or mare) in harness ...	15	12	8

CLASS 6.—Carriage Horses—Animals 3 years old and upwards
to be over 15½ hands.

1. Stallion, 4 years old and upwards	30	20	10
2. Stallion, 3 years old	20	15	10
3. Stallion, 2 years old	15	10	5
4. Carriage Filly, 3 years old	15	10	5
5. Filly 2 years old	12	6	4
6. Brood Mare with Foal by her side	20	15	10

For Regulations regarding Medals and Diplomas, see page 16 of this Prize List.

PRIZE LIST.

25

SECT.

	1st	2nd	3rd
7. Pair Matched Carriage Horses (geldings or mares) \$15	12	8	
8. Pair Matched Carriage Horses (geldings or mares) under 13½ hands	20	15	10
9. Single Carriage Horse, (gelding or mare) in harness	15	12	8

CLASS 7.—Heavy Draught Horses, exclusive of animals entered in other classes as pure Clydesdales, Suffolks and Percherons.

1. Stallion, 4 years old and upwards, over 1400 lbs.	25	15	10
2. Stallion, 3 years old, over 1200 lbs.	15	10	6
3. Stallion, 2 years old	12	8	6
4. Filly, 3 years old, over 1200 lbs.	15	10	5
5. Filly, 2 years old	12	8	4
6. Brood Mare, over 1400 lbs., with Foal by her side	20	12	6
7. Matched farm Team (geldings or mares), in harness	20	15	10
8. Matched Team of Dray horses in harness, over 1400 lbs. each	20	15	10

CLASS 8.—Draught Horses, exclusive of animals entered in other classes as Clydes, Percherons, and Suffolks.

1. Heavy Draught Stallion, 4 years old and upwards, under 1400 lbs.	25	15	10
2. Stallion, 3 years old, under 1200 lbs.	15	10	6
3. Stallion, 2 years old	12	8	4
4. Filly, 3 years old, under 1200 lbs.	15	10	5
5. Filly, 2 years old	12	8	4
6. Brood Mare, under 1400 lbs., with Foal by her side	20	12	6
7. Team Match Draught Horses, in harness, under 1400 lbs. each	20	15	10

CLASS 9.—Hunters and Saddle Horses.

1. Saddle Horse (gelding or mare)	15	12	8
2. Hunters over hurdles (Heavy Weight) 13 stones...	15	12	8
3. Hunters over Hurdles (Light Weight), 11 stones...	15	12	8
4. Farmers' Horses over hurdles (any weight) ...	10	8	6

For Regulations regarding Medals and Diplomas, see page 16 of this Price List.

CLASS 10 Shetland Ponies.

SRCT							1st	2nd	3rd
1. Stallions...	\$5	3	2
2. Mares	5	3	2

CLASS 11—Cobs and Ponies.

1. Cobs under 14 hands, and over 12 hands	...	\$5	3	1
2. Ponies, under 12 hands...	...	5	3	2

CLASS 12.—Donkeys.

1. Donkeys	5	3	2
------------	-----	-----	-----	-----	-----	-----	---	---	---

No Horses will be allowed to compete in more than one class or section, except in cases of teams, where Brood Mares may also compete.

In making entries, the Breed, breeder's name, if known; the owner's name and full address; the name of animal, if named; and the color, age and sex must be stated.

Of Horses, over four years old, give the height and weight, and state whether the weight is estimated or by the scales; the measured height must be given, and will be taken as the height in shoes, unless otherwise stated.

In the class for Blood Horses, full Pedigree, properly certified, must accompany the entry. No animals will be allowed to compete as pure bred unless they possess regular Stud Book Pedigrees, except in the case of Clydes and other heavy draught horses, of which no regular Stud Book is kept; but satisfactory evidence must be produced that they are directly descended from such stock.

No Horse will be allowed a premium unless sound, except in the case of Stallions and Brood Mares injured by accidents which do not lessen their usefulness; the opinion of the Referee to be taken in all cases of suspected unsoundness.

Horses must be shown, when required, in the ring, uncovered, and in such manner as the Judges may require or allow; and if exhibitors refuse to submit to the proper requirement of the Judges or Committee, their animals will be ruled out.

As Horses possessing no merit whatever, and not worthy of exhibition, have in some cases heretofore been entered merely to secure stabling, the Committee in charge of this Department is empowered, when any cases of this kind are reported to them, at once to order the animals, so

For Regulations regarding Medals and Diplomas, see page 16 of this Prize List.

entered, out of the grounds, and the entry money paid for such animals shall be forfeited.

Horses may be withdrawn at 6 o'clock every evening on a deposit of \$10.00, which shall be forfeited if the animal is not brought back at 8 o'clock the following morning.

Exhibitors will not be allowed to use stalls for storing forage, and the Committee shall at all times have the right of making use of stalls thus occupied.

CATTLE.

(Age of Cattle to date from 1st of January)

CLASS 13. Short Horns.

1st	2nd	3rd
1. Bull, 4 years old and upwards	\$40	30
2. Bull, 3 years old	30	20
3. Bull, 2 years old	25	15
4. Bull, 1 year old	15	10
5. Bull Calf (under 1 year)	10	8
6. Cow, 4 years old and upwards	30	20
7. Cow, 3 years old	25	15
8. Heifer, 2 years old	15	10
9. Heifer, 1 year old	10	8
10. Heifer Calf (under one year)	10	8
11. Herd of Durham Cattle, consisting of one Bull and five Females, of any age, owned by exhibitor.—This prize will not be awarded unless two Herds compete, Diploma and	40	10

CLASS 14. Herefords.

1. Bull, 4 years old and upwards...	\$35	25	15
2. Bull, 3 years old	30	20	12
3. Bull, 2 years old	20	15	10
5. Bull, 1 year old	15	10	6
5. Bull Calf under 1 year	10	8	4
6. Cow, 4 years old and upwards	25	15	10
7. Cow, 3 years old	20	15	10
8. Heifer, 2 years old	15	12	8
9. Heifer, 1 year old	12	8	6

For Regulations regarding Medals and Diplomas, see page 16 of this Prize List.

PRIZE LIST.

Sect.	1st	2nd	3rd
10. Heifer Calf, under 1 year	8	6	4
11. Herd of Herefords, consisting of one Bull and five Females, of any age, owned by exhibitor. This prize will not be awarded unless two herds compete, Diploma and	30	10	0

CLASS 15—Devons.

1. Bull, 4 years old and upwards... ..	\$30	20	15
2. Bull, 3 years old	25	15	10
3. Bull, 2 years old	15	10	8
4. Bull, 1 year old	10	8	5
5. Cow, 5 years old and upwards... ..	15	10	8
6. Cow, 3 years old	15	10	8
7. Heifer, 2 years old	10	5	3
8. Heifer, 1 year old... ..	8	4	2

CLASS 16 Ayrshires.

1. Bull, 4 years old and upwards... ..	35	25	15
2. Bull, 3 years old	30	20	12
3. Bull, 2 years old	20	15	10
4. Bull, 1 year old	15	10	6
5. Bull Calf (under one year)	10	8	4
6. Cow, 4 years old and upwards	25	15	10
7. Cow, 3 years old	20	15	10
8. Heifer, 2 years old	15	12	8
9. Heifer, 1 year old	12	8	6
10. Heifer Calf (under 1 year)	8	6	4
11. Herd of Ayrshire Cattle, consisting of one Bull and five Females, of any age, owned by the exhibitor.—This prize will not be awarded unless three Herds compete, Diploma and	30	10	0

CLASS 17, Polled Angus, or Aberdeens.

1. Bull, 4 years old and upwards	35	25	15
2. Bull, 3 years old	30	20	12

For Regulations regarding Medals and Diplomas, see page 16 of this Prize List.

PRIZE LIST.

29

1st	2nd	3rd
8	6	4
30	10	0
30	20	15
25	15	10
15	10	8
10	8	5
15	10	8
15	10	8
10	5	3
8	4	2

35	25	15
30	20	12
20	15	10
15	10	6
10	8	4
25	15	10
20	15	10
5	12	8
2	8	6
8	6	4

0	10	0
5	25	15
0	20	12

s Prize List.

SECT.

	1st	2nd	3rd
3. Bull, 2 years old	20	15	10
4. Bull, 1 year old	15	10	6
5. Bull Calf, under 1 year	10	8	4
6. Cow, 4 years old and upwards	25	15	10
7. Cow, 3 years old	20	15	10
8. Heifer, 2 years old	15	12	8
9. Heifer, 1 year old	12	8	6
10. Heifer Calf, under 1 year	8	6	4
11. Herd of Angus or Aberdeens, consisting of one Bull and five Females, of any age, owned by exhibitor.—This prize will not be awarded unless two Herds compete. ... Diploma and	30	10	0

CLASS 18. Jersey or Alderney Cattle.

1. Bull, 4 years old and upwards	35	25	15
2. Bull, 3 years old and upwards	30	20	10
3. Bull, 2 years old	20	10	5
4. Yearling Bull	12	8	4
5. Bull Calf, under one year	10	6	3
6. Cow, 4 years old and upwards	20	15	10
7. Cow, 3 years old	15	10	6
8. Heifer, 2 years old	15	10	6
9. Yearling Heifer	12	8	4
10. Heifer Calf, under 1 year	10	6	3
11. Herd of Jersey or Alderney Cattle, consisting of one Bull and five Females, of any age, owned by the exhibitor.—This prize will not be awarded unless two Herds compete.—Diploma, and	30	10	0

CLASS 19. Grade Cattle for Dairy purposes, sired by a pure-bred Bull.

1. Grade Cow, 4 years old and upwards	20	15	10
2. Cow, 3 years old	15	10	8
3. Heifer, 2 years old	10	8	4
4. Heifer, 1 year old	8	6	4

CLASS 20. Fat and Working Cattle, any Breed.

1. Fat Ox or Steer	15	10	5
2. Fat Cow or Heifer	15	10	5

For Regulations regarding Medals and Diplomas, see page 16 of this Prize List.

In making entries, the breed, the breeder's name if known; the owner's name and address in full; and the name, color, age and sex of animal, must be stated.

In pure breed classes a certificate of Herd Book or Registered Pedigree, or a sufficient reference to the Herd Book in which they are registered must accompany the application for exhibition.

No animal may compete in more than one class or division except for the herd prizes. All animals will be shown in the rings, and exhibitors must be ready to bring them out when called for.

The exact age of young animals must be stated on the cards, and it will be taken into consideration by the Judges in making their awards; and any person underrating the age of an animal will forfeit the premium to which he might otherwise be entitled.

Young animals may compete, if the exhibitor thinks fit, in older classes than that to which they properly belong; but the exhibitor must choose the section he will compete in when making the entry; he shall not change to another section afterwards, and no animal will be allowed to compete in more than one of the foregoing sections, except when competing in the Herds.

Cows in any of the above classes must be giving milk at the time of the Exhibition, or be evidently well gone in calf.

An animal will not be allowed to compete as a three year old cow unless she has had a calf, or is evidently in calf; but a two year old animal having had a calf, will be allowed to compete as a two year old heifer, if the owner thinks fit.

Prizes will be awarded to animals of other breeds than those above mentioned, if deemed worthy.

Herd Prizes only to be awarded if Judges consider Herd specially deserving.

SHEEP.

CLASS 21.—Leicesters.

SECT.		1st	2nd	3rd
1.	Ram, two shears and over	15	10	5
2.	Shearling Ram...	15	10	5
3.	Ram Lamb	12	8	4
4.	Two Ewes, 2 shears and over...	15	10	5
5.	Two Shearling Ewes	15	10	5
6.	Two Ewe Lambs...	12	8	4

For Regulations regarding Medals and Diplomas, see page 16 of this Prize List.

PRIZE LIST.

31

SECT.		CLASS 22.—Cotswolds.		
		1st	2nd	3rd
7.	Ram, two shears and over	15	10	5
8.	Shearling Ram...	15	10	5
9.	Ram Lamb	12	8	4
10.	Two Ewes, 2 shears and over...	15	10	5
11.	Two Shearling Ewes	15	10	5
12.	Two Ewe Lambs	12	8	4

		CLASS 23.—Other Long-Wooled Sheep.		
		1st	2nd	3rd
13.	Ram, two shears and over	15	10	5
14.	Shearling Ram...	15	10	5
15.	Ram Lamb	12	8	4
16.	Two Ewes, 2 shears and over...	15	10	5
17.	Two Shearling Ewes	15	10	5
18.	Two Ewe Lambs	12	8	4

		CLASS 24.—Southdowns.		
		1st	2nd	3rd
19.	Ram, two shears and over...	15	10	5
20.	Shearling Ram ...	15	10	5
21.	Ram Lamb...	12	8	4
22.	Two Ewes, two shears and over	15	10	5
23.	Two Shearling Ewes	15	10	5
24.	Two Ewe Lambs	12	8	4

		CLASS 25.—Shropshire, Hampshire, and Oxfordshire Downs.		
		1st	2nd	3rd
	Ram, two shears and over ...	15	10	5
	Shearling Ram	15	10	5
	Ram Lamb...	12	8	4
28.	Two Ewes, two shears and over	15	10	5
29.	Two Shearling Ewes	15	10	5
30.	Two Ewe Lambs	12	8	4

		CLASS 26.—Fat Sheep of any Breed.		
		1st	2nd	3rd
31.	Best two Wethers ...	12	8	4
32.	Best two Ewes ...	12	8	4

For regulations regarding Medals and Diplomas, see page 16 of this Prize List.

if known; the age and sex of

or Registered which they are

division except ings, and exhi-

the cards, and ing their awards; forfeit the pre-

s fit, in older exhibitor must entry; he shall will be allowed s, except when

at the time of

e year old cow two year old a two year old

n those above

ferd specially

1st	2nd	3rd
5	10	5
5	10	5
2	8	4
5	10	5
5	10	5
2	8	4

is Prize List.

In making entries, the breed, breeder's name, owner's name and address in full, with age and sex of the animals, must be given.

Sheep must be closely shorn on or after the 1st of May, and the date of shearing shall form part of the entry certificate, *and the attention of exhibitors is particularly called to this rule, as it will be strictly adhered to*, and Judges are requested not to award any prize to sheep that have not been shorn in accordance with this rule, and further, that Judges be guided in their awards more by purity of blood than size of sheep and quantity of wool.

Ewes, two shears and over, in all classes, except Fat Sheep, must have raised lambs the present season, and the fact of having done so must be stated in the entry certificate.

Sheep that have been shown in other classes cannot compete as Fat Sheep.

PIGS.—SMALL BREEDS.

CLASS 27.—Berkshires.

1. Boar, over 2 years	\$15	10	5
2. Boar, over 1 year and under 2 years	15	10	5
3. Boar, over 6 months and under 11 months	15	10	5
4. Boar, under six months old	12	8	4
5. Sow, over two years	15	10	5
6. Sow, over 1 year and under 2 years	15	10	5
7. Sow, over 6 months and under 12 months	15	10	5
8. Sow, under 6 months	12	8	4

CLASS 28.—Suffolks.

1. Boar, over 2 years	15	10	5
2. Boar, over 1 year and under 2 years	15	10	5
3. Boar, over 6 months and under 12 months	15	10	5
4. Boar, under 6 months	12	8	4
5. Sow, over 2 years	15	10	5
6. Sow over 1 year and under 2 years	15	10	5
7. Sow, over 6 months and under 12 months	15	10	5
8. Sow, under 6 months	12	8	4

SEC

1.

2.

3.

4.

5.

6.

7.

8.

7.

8.

1.

2.

3.

4.

5.

6.

7.

8.

1.

2.

3.

4.

5.

6.

7.

8.

1.

2.

3.

4.

5.

6.

7.

8.

1.

2.

3.

4.

5.

6.

7.

8.

Th

with

For

CLASS 29.—Essex Pigs.

SECT.		1st	2nd	3rd
1.	Boar, over 2 years	15	10	5
2.	Boar, over 1 year and under 2 years ...	15	10	5
3.	Boar, over 6 months and under 12 months ...	15	10	5
4.	Boar, under 6 months	12	8	4
5.	Sow, over 2 years	15	10	5
6.	Sow, over 1 year and under 2 years ...	15	10	5
7.	Sow, over 6 months and under 12 months ...	15	10	5
8.	Sow, under 6 months	12	8	4

CLASS 30.—Poland China.

1.	Boar, over 2 years	15	10	5
2.	Boar, over 1 year and under 2 years ...	15	10	5
3.	Boar, over 6 months and under 12 months ...	15	10	5
4.	Boar, under 6 months	12	8	4
5.	Sow, over 2 years	15	10	5
6.	Sow, over 1 year and under 2 years ...	15	10	5
7.	Sow, over 6 months and under 12 months ...	15	10	5
8.	Sow, under 6 months	12	8	4

LARGE BREEDS.

CLASS 31.—Yorkshire and other Large Breeds.

1.	Boar over 2 years	15	10	5
2.	Boar, over 1 year and under 2 years ...	15	10	5
3.	Boar, over 6 months and under 12 months ...	15	10	5
4.	Boar, under 6 months	12	8	4
5.	Sow, over 2 years	15	10	5
6.	Sow, over 1 year and under 2 years ...	15	10	5
7.	Sow, over 6 months and under 12 months ...	15	10	5
8.	Sow, under 6 months	12	8	4

The Breed, Breeder's Name and Owner's Name and Address in full, with precise age of animals, must be given, when making entries.

For Regulations regarding Medals and Diplomas, see page 16 of this Prize List.

CLASS 32.—POULTRY, ETC.

(A Trio of each Variety.)

Sect.							1st	2nd
1.	Brahmas, Light	3	2
2.	Do. Dark	3	2
3.	Cochins, Partridge	3	2
4.	Black Cochins	3	2
5.	Buff do	3	2
6.	White do	3	2
7.	Pea Comb Partridge Cochins	3	2
8.	Langshans	3	2
9.	Dorkings, White	3	2
10.	do Silver Gray	3	2
11.	do Colored	3	2
12.	Hamburgs	3	3
13.	do Pencilled	3	2
14.	do White and Black	3	2
15.	do Spanish, White Face	3	2
16.	Leghorns, White	3	2
17.	Do. Brown	3	2
18.	Do. Black	3	2
19.	Houdans	3	2
20.	Crevecœurs	3	3
21.	Lafleche	3	2
22.	Polish White, Crested Black	3	2
23.	Do. Spangled	3	2
24.	Do. Bearded	3	2
25.	Game, Black Breasted Red	3	2
26.	Do. Brown	3	2
27.	Do. Duckwing	3	2
28.	Do. Pie	3	2
29.	Do. Any other variety	3	2
30.	Game Bantams, Black Breasted Red	3	2
31.	Do. Do. Brown	3	2
32.	Do. Do. Duckwing	3	2
33.	Do. Do. Pie	3	2
34.	Do. Do. Any other variety	3	2
35.	Bantams, Seabright	3	2
36.	Do. Rosecomb	3	2
37.	Do. Japanese and White Booted	3	2

For Regulations regarding Medals and Diplomas, see page 16 of this Prize List.

Sec.
38.
39.
40.
41.
42.
43.
44.
45.
46.
47.
48.
49.
50.
51.
52.

53.
54.
55.
56.
57.
58.
59.
60.
61.
62.
63.
64.
65.
66.
67.
68.
69.
70.
71.
72.

For

		Sect.						1st	and
	1st	2nd	38. Plymouth Rocks	3	2
	3	2	39. Any other variety	3	2
...	3	2	40. Turkey Bronze	3	2
	3	2	41. Any other variety	3	2
...	3	2	42. Pea Fowl	3	2
	3	2	43. Guinea Fowl	3	2
...	3	2	44. Pheasants	3	2
	3	2	45. Goose, Embden	3	2
...	3	2	46. Do. Toulouse	3	2
	3	2	47. Do. China	3	2
...	3	2	48. Do. African and Egyptian	3	2
	3	2	49. Ducks, Aylesbury	3	2
...	3	2	50. Do. Rouen	3	2
	3	3	51. Do. Pekin	3	2
...	3	2	52. Do. White Crested	3	2

PIGEONS.

	3	2	53. Pouters, Pied	2	I
	3	2	54. Do. Solid	2	I
	3	2	55. Pouters, Isabells	2	I
	3	3	56. Carriers	2	I
	3	2	57. Fantails, White Coated, Calcutta, and White Smooth-head	2	I
	3	2	58. Fantails, Black and White	2	I
	3	2	59. Do. Red and Yellow	2	I
	3	2	60. Tumblers, Almond	2	I
	3	2	61. Do. Bearded and Baldhead	2	I
	3	2	62. Do. Agathe, Kite, and Ermine	2	I
	3	2	63. Barbs	2	2
	3	2	64. Owls, English	2	I
	3	2	65. Owls, African	2	I
	3	2	66. Turbits, Solid	2	I
	3	2	67. Do. Winged	2	I
	3	2	68. Do. Colored Tails	2	I
	3	2	69. Jacobins, White and Blue	2	I
	3	2	70. Do. any other color	2	I
	3	2	71. Priests	2	I
	3	2	72. Swallows	2	I

Prize List.

For Regulations regarding Medals and Diplomas, see page 16 of this Prize List.

73. Magpies	2	I
74. Trumpeters, Solid	2	I
75. Do Molted	2	I
76. Do Russian	2	I
77. Runts, Solid	2	I
78. Do Molted	2	I
79. Nuns	2	I
80. Antwerps, Checkered	2	I
81. Do Solid	2	I
82. Archangels, Light	2	I
83. Do Dark	2	I
84. Dragons	2	I
85. Any other variety	2	I

As the Committee wish to promote the Poultry interest by encouraging the careful breeding of choice specimens and the improvement of the common stock of the country, thereby adding to the merchantable value thereof, exhibitors are requested to affix a selling price to all specimens at the time of making their entries.

All specimens must be exhibited in their natural condition. The card of the Committee must be placed on each coop, cage or specimen, giving the name of exhibitor, variety of exhibit, and if for sale the price. No other card will be allowed upon the coop, cage or specimen, until the premiums have been awarded.

Coops will be provided by the Committee, but the poultry must be fed and taken care of by the exhibitor.

All specimens must be entered in the name of the actual owner.

An attempt to evade this rule, as in borrowing one or more specimens of a coop, or in buying with the understanding that the specimens shall be returned after the Exhibition, or that they shall be returned unless sold, or on any other condition, will exclude all coops erected by the offending party if discovered in time; and if not, the premiums shall be withheld.

All specimens shall be exhibited in their natural condition—Games and Game Bantams being exceptions so far as to render the ordinary dubbing and trimming admissible. Pulling false feathers, coloring, shaping spurs, inserting or splicing feathers and similar practices, are prohibited.

Any violation of this rule will exclude the specimen from competition.

For Regulations regarding Medals and Diplomas, see page 16 of this Prize List.

AGRICULTURAL IMPLEMENTS.

CLASS 33.—Agricultural Implements and Machines for Exhibition only.

In this class, by request of numerous manufacturers, entries of the undermentioned articles will be received for exhibition only, not in competition for Prizes. The articles must be entered in the books in the same manner as articles in other classes, and they will be provided with ample space for exhibition in the same manner as if competing for prizes.—But should the Committee see fit, they may, upon the recommendation of the Judges, award Special Prizes to Implements of peculiar merits.

1. Grain Drill.
2. Seed Drill for sowing two or more drills of Turnips, Mangels or other Seeds.
3. Broad-Cast Grain and Seed Sower.
4. Beet Seed Sower.
5. Mowing Machine.
6. Reaping Machine.
7. Combined Mower and Reaper.
8. Self-Binding Reaper with wire or cord.
9. Horse-Power Thresher and Separator.
10. Vibrator Thresher and Separator.
11. Smut Machine.
12. Clover Cleaning Machine.
13. Field or two Horse Cultivator, iron.
14. Two Horse Cultivator, wood.
15. Two Furrow Plough.
16. Double Shear Trench Plough.
17. Cylinder Cultivator.
18. Draining Plough or Ditching Machine, for digging drains.
19. Implement or Machine for Cutting, Pulling, or otherwise harvesting Peas.
20. Portable Grist Mill.
21. Grain Cracker.
22. Corn and Cob Crusher.
23. Flax Pulling Machine.
24. Two Horse Power for general purposes for farmer's use.
25. Drag Saw.
26. Hay Baling Press.

For Regulations regarding Medals and Diplomas, see page 16 of this Prize List.

CLASS 34.—Agricultural Implements.

RULE.—It shall be distinctly understood that all unnecessary and inappropriate ornamentation of Agricultural Implements, is expressly prohibited, and Judges are hereby directed not to award prizes to implements so finished or adorned.

SECT.	1st.	2nd.	3rd.
1. Double Mould Plough	\$10	\$7	\$4
2. Gang Plough	12	8	4
3. Iron Beam Plough with Steel Mould Board and Wooden Handles	12	8	4
4. Iron Plough	15	10	5
5. Subsoil Plough	12	8	4
6. Wooden Plough	12	8	4
7. Pair of Iron Harrows	10	8	6
8. Pair of Wooden Harrows	6	4	2
9. Iron Roller	6	4	2
10. Wooden Roller	4	3	2
11. Horse Hoe, single horse cultivator, iron ...	4	3	2
12. Horse Hoe, single horse cultivator, wood ...	4	3	2
13. Horse Rake, without wheels	4	3	2
14. Sulky Horse Rake	6	4	2
15. Improved Liquid Manure Drill for drilling two or more rows of liquid with turnips, mangels and either on the ridge or flat	10	8	6
16. Machine for cutting roots for Stock	8	6	4
17. Potato Digger	8	6	4
18. Straw Cutter	8	6	4
19. Stump Extractor	8	4	0
20. Stone Lifter	8	4	0
21. Cider Mill and Press	8	4	0
22. Collection of Agricultural Implements for field use	10	0	0
23. Scotch Cart	6	4	2
24. Hay Cart	6	4	2
25. Market Waggon	6	4	2
26. Drill Harrow	6	4	2
27. Paris Green Sprinkler	6	4	2
28. Wooden Drill Plough	6	4	2
29. Extras.			

For Regulations regarding Medals and Diplomas, see page 16 of this Prize List.

CLASS 35.—Agricultural Tools and Implements, chiefly for hand use.

SECT.	1st	2nd	3rd
1. Machine for making Drain Tiles	15	10	0
2. Set Draining Tools	6	4	2
3. Assortment of Drain Tiles	4	3	2
4. Half-dozen Spades	3	2	1
5. Half-dozen Steel Hoes	3	2	1
6. Half-dozen Steel Shovels	3	2	1
7. Half-dozen Grain Scoops... ..	3	2	1
8. Half-dozen Manure Forks	3	2	1
9. Half-dozen Spading Forks	3	2	1
10. Seed Drill, or Barrow, for Turnips, etc	4	3	2
11. Machine for Sowing Grass Seeds	4	3	2
12. Garden Walk, or Lawn Roller	3	2	1
13. Half-dozen Scythe Snaiths	3	2	1
14. Grain Cradle	2	1	0
15. Halfdozen Grass Scythes	3	2	1
16. Halfdozen Cradle Scythes	3	2	1
17. Lawn Mowing Machine	3	2	1
18. Half-dozen Hay Rakes	3	2	1
19. Half-dozen Hay Forks	3	2	1
20. Straw or Barley Fork, wood	3	2	1
21. Fanning Mill	10	8	6
22. Cheese Press	8	6	0
23. Churn	3	2	1
24. Cheese Vat	8	5	3
25. Assortment of Factory Milk-Cans and Pails	5	3	2
26. Half-dozen Axe Handles	2	1	0
27. Set Horse Shoes	3	2	1
28. Ox-yoke and Bows	2	1	0
29. Farm Gate	3	2	0
30. Specimen Farm Fence, wood	3	2	0
31. Specimen Wire Fencing, not less than Two Rods, erected on the ground	8	6	4
32. Assortment of Malleable Castings, for Agricultural purposes	12	8	0
33. Assortment Agricultural Tools for hand use, of Canadian Manufacture	10	0	0
34. Improved Milk Pans for not less than ten Cows	0	4	2

For Regulations regarding Medals and Diplomas, see page 16 of this Prize List.

SECT.

	1st	2nd	3rd
35. Collection of Dairy Utensils in wood	8	4	2
36 Do do in tin... ..	8	4	2
37. Sap Evaporator, for not less than 150 trees ...	8	4	2
38. Sap Buckets	4	3	2
39. Sap Spouts	3	2	1
40. Machinery for making Sugar from Cane	10	5	3
41 Potatoe Picker	4	2	1

Agricultural Implements must be labelled with the name of the Machine, its use and Retail Price; and they are required to be the same in construction and finish as those sold to the farmer, and not specimens got up for the Exhibition.

AGRICULTURAL PRODUCTIONS.

CLASS 36.—Seeds, Grains, &c.

1. White Winter Wheat, 4 bushels	6	4	2
2. Red Winter Wheat, 4 bushels	6	4	2
3. White Spring Wheat, 4 bushels	6	4	2
4. Red Spring Wheat, 4 bushels	6	4	2
5. Barley, (two rowed) 4 bushels	6	4	2
6. Barley (six rowed) 4 bushels	6	4	2
7. Rye, 2 bushels	6	4	2
8. Oats, white, 4 bushels	6	4	2
9. Oats, black, 4 bushels	6	4	2
10. Field Pease, 4 bushels	6	4	2
11. Marrowfat Pease, 2 bushels	6	4	2
12. Tares, 2 bushels... ..	6	4	2
13. White Field Beans, 2 bushels	6	4	2
14. Indian Corn, in the ear, white, 12 ears... ..	6	4	2
15. Indian Corn, in the ear, yellow, 12 ears	6	4	2
16. Timothy Seed, 2 bushels	6	4	2
17. Clover Seed, 2 bushels	6	4	2
18. Alsike Clover Seed, 2 bushels	6	4	2
19. Hemp Seed, 2 bushels	8	5	3
20. Flax Seed, 2 bushels	8	5	3
21. Mustard Seed, 1 bushel	6	4	2
22. Swedish Turnip Seed, 20 lbs	6	4	2
23. 14 lbs White Belgian Field Carrot Seed	6	4	2
24. 12 lbs long Red Mangel Wurzel Seed	6	4	2

For Regulations regarding Medals and Diplomas, see page 16 of this Prize List.

PRIZE LIST.

41

1st	2nd	3rd
8	4	2
8	4	2
8	4	2
4	3	2
3	2	1
10	5	3
4	2	1
name of the		
ed to be the		
rmer, and not		

SECT.

	1st	2nd	3rd
25. 12 lbs Yellow Globe Mangel Wurzel Seed...	6	4	2
26. Bale of Hops, 112 lbs ...	12	8	4
27. Horse Beans, 2 bushels ...	6	4	2
28. Buckwheat, 4 bushels ...	6	4	2
29. Millet, 2 bushels ...	6	4	2

All the grain, seeds and other agricultural products must be the growth of the year 1882, except clover and grass seeds, which may be the growth of 1881.

The names of the different varieties of wheat and other grain and seeds must be inserted by each exhibitor in his list of entries.

The roots must be certified as field culture by the exhibitor.

CLASS 37.—Roots and other Field Crops.

1. Garnet Chilis, Red, 1½ bushel ...	3	2	1
2. Garnet Chilis, White, 1½ bushel ...	3	2	1
3. Early Goderick Potatoes, 1½ bushel ...	3	2	1
4. Early Rose Potatoes, 1½ bushel ...	3	2	1
5. Any other sort, 1½ bushel...	3	2	1
6. Collection of Potatoes ...	3	2	1
7. Swede Turnips (18)...	3	2	1
8. White Globe Turnips (18) ...	3	2	1
9. Aberdeen Yellow Turnips (18) ...	3	2	1
10. Twenty Roots Red Carrots ...	3	2	1
11. Twenty Boots White Carrots ...	3	2	1
12. Mangel Wurzel, long red (18) ...	3	2	1
13. Red Globe Mangel Wurzel (18) ...	3	2	1
14. Yellow Globe Mangel Wurzel (18) ...	3	2	1
15. Long Yellow Mangel Wurzel (18) ...	3	2	1
16. Kohl-Rabi (18) ...	3	2	1
17. Sugar Beet (18) ...	6	4	2
18. Parsnips (18) ...	3	2	1
19. Large Pumpkins for cattle (2) ...	3	2	1
20. Tobacco Leaf (20 lbs) growth of 1881 ...	3	2	1
21. Tobacco cut (10 lbs)...	3	2	1
22. Bale of Hay for Shipping purpose ...	3	2	1
23. Broom Corn Brush ...	3	2	1
24. Flax scutched (112 lbs)...	12	8	6
25. Hemp (112 lbs) ...	12	8	6
26. Sugar Cane ...	3	2	1

Prize List.

For Regulations regarding Medals and Diplomas, see page 16 of this Prize List.

CLASS 38.—DAIRY PRODUCTS.

Open to Province of Quebec.

SECT.	1st	2nd	3rd
1. For the best three Tubs of Factory-made Butter, not less than 50 lbs. each, made at any time	\$30	\$20	\$10
2. For the best two tubs of Factory-made Butter, not less than 50 lbs. each, made at any time	25	10	5
3. Best Five Factory-made Cheese, (colored) not less than 50 lbs. each... ..	25	15	10
4. Best Five Factory-made Cheese, (white), not less than 50 lbs. each... ..	25	15	10
5. Best Five Cheese, Dairy-made, not less than 8 lbs. each	10	5	2
6. Best Cream Cheese, not less than 1 dozen	5	3	2

Open to Canada and the United States.

7. For the best Three Tubs Factory-made Butter, made at any time or place, not less than 50 lbs. each	30	20	10
8. For the Two best Tubs Dairy-made Butter, made at any time or place, not less than 50 lbs. each... ..	30	20	10
9. For the best Five Boxes Cheese, made at any time or place, (colored or white)	50	30	15
10. Best Cheese Tester	3	0	0
11. Best Butter Tester	3	0	0

1. Only one sample of Cheese can be entered from any one factory. Each sample must consist of five cheeses, not less than 50 lbs. each.

2. All entries to be placed on the Bench at 10 o'clock a.m. on the first day of the exhibition.

The name of the Factory to be given at the time of entry.

For regulations regarding Medals and Diplomas, see page 16 of this Prize List.

3. Reports and awards shall be based upon inherent and comparative merit. The elements of merit being held to include considerations relating to quality, skill in manufacture, utility, fitness for the purpose intended, economy, cost, and adaptation to public wants.

4. The Judges shall make favourable mention of exhibits of merit, failing to take a premium or diploma.

5. No person will be allowed to interfere with the Judges during their adjudications; and any person who, by letter or otherwise, attempts such an interference, will be excluded from competition.

6. The Judges shall only report the articles or stock entitled to premium or mention.

7. If any question arises as to the regularity of an entry or the right of an article to compete in the class, the Committee shall report the same to the Board of Appeal for adjustment.

8. In deciding upon the merits of both Butter and Cheese, the Judges shall adopt a standard of excellence as follows:—

SCALE OF POINTS ON A BASIS OF A TOTAL OF FIFTY AS PERFECTION.

BUTTER.

Flavour	10
Keeping-Properties	10
Texture	10
Colour	10
Make and Salting	10
Total	50

CHEESE.


Make...	10
Flavour	10
Texture	10
Colour	10
Keeping-properties	10
Total	50

N. B.—Winners of first Prizes in any Class will be entitled to compete for Sweepstake Prizes.

For Regulations regarding Medals and Diplomas, see page 16 of this Prize List.

CLASS 39.—HONEY, SUGAR, ETC

SECT.	1st	2nd	3rd
1. Best Package of Honey in the comb, one pound or more	3	2	1
2. Best Package of extracted Honey, one pound or more	3	2	1
3. Best Machinery for extracting Honey ...	4	2	1
4. Best colony of Italian Bees	3	2	1
5. Best exhibition with a colony of Bees, in movable frame hive, including their public manipulation	4	2	1
6. Best show of Bees Wax	3	2	1
7. Best Bee Hive for all purposes	3	2	1

 Maple Sugar, Syrups, and domestic manufactures to be entered in the Industrial Department.



For Regulations regarding Medals and Diplomas, see page 16 of this Prize List.

HORTICULTURAL DEPARTMENT.

RULES AND REGULATIONS.

The entries in this Department will be exhibited in the Horticultural Hall, erected specially for the purpose.

All specimens placed in competition for Premiums must be *bona fide* grown by the competitor or employer, and if proved not to be such, the competitor to be disqualified for receiving any premium whatever at the Exhibition,

Entries may be made for the Exhibition without competition; and the Judges may notice such as they shall deem worthy in their reports.

All plants, fruits and vegetables must be labelled with their proper names.

Professional and amateur exhibitors can exhibit only in their respective classes, except for the premiums open to all. Competitors can only make one entry, and receive only one premium in each section.

In arranging the fruits on the tables, exhibitors will be required to place the varieties, as far as possible, in separate groups. All varieties must be correctly named. When a certain number of varieties is specified, there must be neither more nor less.

Premiums will be withheld if the samples are not worthy.

All articles entered for exhibition will be required to remain on the grounds until the close of the Exhibition, and will not be allowed to be removed therefrom or interfered with by the exhibitor, except by permission of the officers or Superintendent in charge.

All persons may be excluded from the Hall, if the Superintendent of the Department sees fit, until after the awards are made.

By a variety of fruit is meant an established variety, known as such to pomologists. New varieties, with only local names, are classed as seedlings.

Exhibitors are requested to furnish the Superintendent of the Department, as soon as they arrive, with a list of their entries, so that proper space may be reserved.

For Regulations regarding Medals and Diplomas, see page 16 of this Prize List.

Any exhibitor known to interfere with the Judges in the discharge of their duties shall forfeit all premiums.

The decision of the Judges, as regards the premiums, will be final. No Judge shall be a competitor in that class for which he is to award premiums.

Parties will not be allowed to compete for more than one prize in the same Section, and no article which has already been awarded a prize will be entitled to another

No individual, except the Judges, will be allowed to touch or handle any fruit, or other article exhibited, and any exhibitor proved guilty of having tampered with any articles on exhibition, or section cards, will be liable to be deprived of all premiums he may have been awarded, at the option of the Committee.

All entries shall be made by noon on the 1st day of September, 1882, with the Secretary of the Council of Agriculture. No. 63 St. Gabriel Street.

Entrance fee. For 10 entries and under, 50 cents; over 10 entries, \$1.00

Exhibitors are particularly requested, in order to avoid unnecessary labor, to enter only such articles as they intend to exhibit.

All information may be obtained by applying to the Secretary, and all persons interested in Horticulture are invited to contribute articles for exhibition.

THE JUDGES.

In all cases the Judges are to be governed by the letter and spirit of the schedule under which exhibitors have made their entries. The general appearance of the fruit, care of its selection, and taste displayed in its arrangement or grouping, each entry being distinctly separated from the rest. These are all elements of the highest importance, and should receive appropriate consideration by the Committee.

The Judges shall have an ideal standard of perfection in all cases, made up of the following particulars :—

That *useful* and *valuable* varieties only are expected to influence their awards, while indifferent sorts, even though large, showy and attractive, should not, for these reasons alone, be held to add to the value of an exhibit, except, possibly as a means of education. They are also requested to make honorable mention, or to recommend awards

For Regulations regarding Medals and Diplomas, see page 16 of this Prize List.

to articles of special merit on exhibition, which, from any cause, have not been entered for competition. Where the premium list specifies the number of each kind necessary to compete, the *exact number* must be presented—*no more, no less*. In the awarding of prizes for fruit, the judges are requested to take into consideration size, color, flavor and condition.

The Judges shall at once report any irregularities of entries, or mistakes of exhibitors which may come to their knowledge, to the Superintendent, who shall cause due corrections to be made, or such action taken as the Executive Committee may decide upon.

LIST OF PREMIUMS.

— FOR —

FRUITS, VEGETABLES AND PLANTS.

(Entrance Fee in this Department : Ten entries and under,
50 cents ; over ten entries, \$1.)

CLASS I. Fruit. Professional Nurserymen's List.

Sect.		1st	2nd	3rd
1	Apples, thirty varieties, correctly named, 4 of each	\$10	8	6
2	" twenty varieties, correctly named, 4 of each	6	4	2
3	" six varieties fall table, named, 4 of each	3	2	0
4	" six varieties of fall cooking, named, 4 of each	3	2	0
5	" six varieties of winter table, named, 4 of each	3	2	0
6	" six varieties of winter cooking, named, 4 of each	3	2	0
7	Pears, collection not less than 15 varieties, correctly named, 4 of each	10	8	6
8	" six varieties, correctly named, 4 of each	5	3	0
9	Plums, collection not less than 15 varieties, correctly named, 6 of each	10	6	0
10	" six varieties, correctly named, six of each	3	2	0
11	Peaches, collection of correctly named, not less than six varieties, six of each	6	4	0
12	" three varieties, six of each	3	2	0

For Regulations regarding Medals and Diplomas, see page 16 of this Prize List

SECT.		1st	and	3rd
13.	Grapes, collection grown in open air, 12 varieties, bunches each named	8	6	4
14.	" collection, six varieties, grown in open air, two bunches each, correctly named ...	6	3	0
15.	" three varieties black, grown in open air, two bunches each, correctly named ...	3	2	0
16.	" three varieties, any other colour, grown in open air, two bunches, each correctly named	3	2	1
17.	" collection of six varieties, grown under glass, one bunch of each sort, correctly named	6	5	0
18.	" three varieties black, grown under glass	4	2	0
19.	" three varieties, white, grown under glass	4	2	0
20.	" three varieties, any other color, grown under glass	4	2	0
21.	" heaviest 1 bunch black Hamburgh Grapes, grown under glass	3	2	0
22.	" heaviest 1 bunch black grapes, any other kind, grown under glass	3	2	0
23.	" heaviest 1 bunch white grapes, grown under glass	3	2	0
24.	Fruit, best display of, grown under glass, by exhibitor. Distinct from other entries; four specimens of each sort, named... ..	10	5	3
25.	Fruit, best display of, grown in open air, by exhibitor. Distinct from other entries; four specimens of each sort, named... ..	10	5	3
26.	Crabs, collection of one dozen each of 6 varieties, cultivated	3	2	0
27.	Extra Entries.			

CLASS 2.—Fruit. General List. Apples and Pears.

(Professional Nurserymen excluded.)

1.	Apples, twenty varieties, correctly named, 4 of each	\$10	\$8	\$6	\$4
2.	" ten varieties, correctly named, 4 of each	6	4	3	2

For Regulations regarding Medals and Diplomas, see page 16 of this Prize List.

1st	and	3rd
8	6	4
6	3	0
3	2	0
3	2	1
6	5	0
4	2	0
4	2	0
4	2	0
3	2	0
3	2	0
3	2	0
10	5	3
10	5	3
3	2	0
ears.		
\$8 \$6		\$4
4	3	2

his Prize List.

SECT.	1st	and	3rd	4th
3. Apples, 4 var. dessert, correctly named, 4 of each... ..	3	2	1	0
4. " 4 var. cooking, correctly named, 4 of each	3	2	1	0
5. " 5 Early Joe	2	1	0	0
6. " 5 Benoni	2	1	0	0
7. " 5 Drap d'Or	2	1	0	0
8. " 5 Duchess of Oldenburgh	2	1	0	0
9. " 5 Snow apples	2 50	2	1 50	1
10. " 5 Fall Pippins	2	1	0	0
11. " 5 Gravenstein	2	1	0	0
12. " 5 Shiawasee Beauty	2	1	0	0
13. " 5 Maiden's Blush	2	1	0	0
14. " 5 Cayuga Red Streak or twenty ounce	2	1	0	0
15. " 5 Pomme Royale	2	1	0	0
16. " 5 St. Lawrence	2	1	0	0
17. " 5 of any variety fall apple	2	1	0	0
18. " 5 Ribston Pippin	2	1	0	0
19. " 5 Alexander	2	1	0	0
20. " 5 Esopus Spitzenberg	2	1	0	0
21. " 5 Beauty of Kent or Kentish Fill-basket	2	1	0	0
22. " 5 Baldwin	2 50	2	1 50	1
23. " 5 Rhode Island Greening	2 50	2	1 50	1
24. " 5 Wagener	2	1	0	0
25. " 5 Colvert	2	1	0	0
26. " 5 Yellow Bellflower	2	1	0	0
27. " 5 King of Tompkins Co	2	1	0	0
28. " 5 Talman's Sweet	2	1	0	0
29. " 5 Grimes' Golden	2	1	0	0
30. " 5 Porter	2	1	0	0
31. " 5 Fameuse	2	1	0 50	0
32. " 5 Strawberry of Montreal	2	1	0 50	0
33. " 5 Peach of Montreal	2	1	0 50	0
34. " 5 Red Astrachan	2	1	0 50	0
35. " 5 Wealthy	2	1	0 50	0
36. " 5 Bourassa	2	1	0 50	0
37. " 5 Roxbury Russell	2 50	2	1 50	1
38. " 5 Swaar	2	1	0	0

For regulations regarding Medals and Diplomas, see page 16 of this Prize List.

D

SECT.	1st	2nd	3rd	4th
39. Apples, 5 Mann	2	1	0	0
40. " 5 Gold Russett	2 50	2	1 50	1
41. " 5 Swayzie Pomme Grise	2 50	2	1 50	1
42. " 5 Pomme Grise	2	1	0	0
43. " 5 Northern Spy	2 50	2	1 50	1
44. " of any other variety (winter)	2	1	0	0
45. " 5 seedling, winter variety	2	1	0	0
46. " 5 seedling, fall variety	2	1	0	2
47. Pears collection of 20 varieties, 4 of each,	10	8	6	4
48. Pears, 10 varieties, of 4 each	6	4	3	2
49. " 4 varieties, 4 of each	3	2	0	0
50. " 5 Qartlett	2 50	2	1 50	1
51. " 5 Seckel	2	1	0	0
52. " 5 White Doyenne	2	1	0	0
53. " 5 Lawrence	2 50	2	1 50	1
54. " 5 Flemish Beauty	2 50	2	1 50	1
55. " 5 Beurre Diel	2	1	0	0
56. " " Louise Bonne de Jersey	2 50	2	1 50	1
57. " 5 Oswego Beurre	2	1	0	0
58. " 5 Belle Lucrative	2	1	0	0
59. " 5 Duchesse d'Angoulême	2 50	2	1 50	1
60. " 5 Beurre Bosc	2	1	0	0
61. " 5 Beurre d'Anjou	2 50	2	1 50	1
62. " 5 Beurre Clairgeau	2	1	0	0
63. " 5 Beurre Superfin	2 50	2	1 50	1
64. " 5 Beurre Hardy	2 50	2	1 50	1
65. " 5 Goodale	2	1	0	0
66. " 5 Clapp's Favourite	2	1	0	0
67. " 5 Beurre Gris d'Hiver Nouveau	2	1	0	0
68. " 5 Buffam	2	1	0	0
69. " 5 Doyenne Boussock	2	1	0	0
70. " 5 Grey Doyenne	2	1	0	0
71. " 5 Sheldon	2	1	0	0
72. " 5 Swan's Orange	2	1	0	0
73. " 5 Winter Nelis	2 50	2	1 50	1
74. " 5 Howell	2	1	0	0
75. " 5 Vicar of Wakefield	2	1	0	0
76. " 5 Easter Beurre	2	1	0	0
77. " 5 Beurre de l'Assomption	2	1	0	0

For Regulations regarding Medals and Diplomas, see page 16 of this Prize List.

2nd	3rd	4th
1	0	0
2	1	50
2	1	50
1	0	0
2	1	50
1	0	0
1	0	0
1	0	2
8	6	4
4	3	2
2	0	0
2	1	50
1	0	0
1	0	0
2	1	50
2	1	50
1	0	0
2	1	50
1	0	0
2	1	50
1	0	0
2	1	50
1	0	0
1	0	0
1	0	0
1	0	0
1	0	0
1	0	0
2	1	50
1	0	0
1	0	0
1	0	0
1	0	0

Sect.		1st	2nd	3rd	4th
78.	Pears, 5 Brockworth Park	2	1	0	0
79.	" 5 Mount Vernon	2	1	0	0
80.	" 5 Pitmaston	2	1	0	0
81.	" 5 of any other variety of fall pear ...	2	1	0	0
82.	" 5 of any other variety of winter	2	1	0	0
83.	" Seedling, any season	2	0	0	0
84.	" Apple Picker	2	0	0	0
85.	" Extra Entries.				

Class 3—Fruit. General List Continued. Plums, Peaches, Grapes, &c.

(Professional Nurserymen excluded.)

1.	Plums, Collection of not less than 15 varieties, 6 of each correctly named	8	6	4
2.	Plums, Collection of 6 varieties, Green or Yellow, correctly named, 6 of each	4	3	1
3.	Plums, Collection of 6 varieties, Red or Blue, correctly named, 6 of each	4	3	1
4.	Plums, 12 Peach	2	1	0
5.	" 12 Prince Engelbert	2	1	0
6.	" 12 Lord Dufferin	2	1	0
7.	" 12 Bradshaw	2	1	0
8.	" 12 Lombard	2	1	0
9.	" 12 Washington	2	1	0
10.	" 12 Victoria	2	1	0
11.	" 12 Huling's Superb	2	1	0
12.	" 12 Coe's Golden Drop	2	1	0
13.	" 12 Yellow Egg	2	1	0
14.	" 12 Smith's Orleans	2	1	0
15.	" 12 Green Gage	2	1	0
16.	" 12 Imperial Gage	2	1	0
17.	" 12 McLaughlin	2	1	0
18.	" 12 Pond's Seedling	2	1	0
19.	" 12 Dessert, 1 variety, correctly named ...	2	1	0
20.	" 12 Cooking, 1 variety, correctly named	2	1	0
21.	" 12 Seedling	2	1	0
22.	" 12 Native Red	2	1	0

this Prize List.

For Regulations regarding Medals and Diplomas, see page 16 of this Prize List

SECT.		1st.	2nd.	3rd
23.	Peaches, 6 varieties of, correctly named, 6 of each	4	2	1
24.	" 6 Early Beatrice	4	2	1
25.	" 6 Early Louise	4	2	1
26.	" 6 Lord Palmerston	4	2	1
27.	" 6 Early Crawfords	2	1	0
28.	" 6 Late Crawfords	2	1	0
29.	" 6 Any other variety, correctly named ...	2	1	0
30.	" 6 White flesh, any other variety, correctly named	2	1	0
31.	" 6 Yellow flesh, any other variety, correctly named	2	1	0
32.	Pears, 6 Seedling	2	1	0
33.	Grapes, collection of, grown in open air, 12 varieties, 2 bunches of each ...	5	4	3
34.	Grapes, 6 varieties of (open air), 2 bunches of each	4	3	2
35.	" 3 bunches Burnit	2	1	0
36.	" 3 bunches Polington	2	1	0
37.	" 3 bunches Champion	2	1	0
38.	" 3 bunches Seedling, White	2	1	0
39.	" 3 bunches Seedling, Red	2	1	0
40.	" 3 bunches Seedling, Black	2	1	0
51.	" 3 bunches Concord	2	1	0
42.	" 3 bunches Deleware	2	1	0
43.	" 3 bunches Diana	2	1	0
44.	" 3 bunches Creveling	2	1	0
45.	" 3 bunches Rogers' 4	2	1	0
46.	" 3 bunches Rogers' 3	2	1	0
47.	" 3 bunches Rogers' 15	2	1	0
48.	" 3 bunches Rogers' 19	2	1	0
49.	" 3 bunches Rogers' 44	2	1	0
50.	" 3 bunches Eumelan	2	1	0
51.	" 2 bunches Hartford prolific	2	1	0
52.	" 3 bunches Allen's Hybrid	2	1	0
53.	" 3 bunches of any other variety, named	2	1	0
54.	" 2 bunches any variety Exotic, grown in open air	2	1	0
55.	" Collection of, grown under glass, not less than eight varieties, 1 bunch of each, correctly named	8	6	4

For Regulations regarding Medals and Diplomas, see page 16 of this Prize List.

2nd.	3rd	SECT	1st	2nd	3rd
2	I	56. Grapes, 2 bunches, Black Hamburg ...	4	2	I
2	I	56. " 2 bunches Black, any other variety ...	3	2	I
2	I	58. " 2 bunches White, grown under glass, cor- rectly named ...	3	2	0
I	0	59. " 2 bunches any other color ...	3	2	0
I	0	60. Nectarines, 6 named ...	2	I	0
I	0	61. Quinces, 6 ...	2	I	0
I	0	62. Cranberries, half-peck, domestic cultivated	2	I	0
I	0	63. Melon, Green fleshed ...	2	I	0
I	0	64. " Red or Scarlet Fleshed ...	2	I	0
I	0	65. " Water ...	2	I	0
I	0	66. Citron ...	2	I	0
4	3	67. Wild Plums, quart uncultivated native ...	2	0	0
3	2	68. Wild Grape, 3 clusters uncultivated native ...	2	0	0
I	0	69. Crab, 3 varieties cultivated, 12 each ...	2	I	0
I	0	60. " Largest and best collection cultivated, 6 of each ...	4	2	0

CLASS 4. Collection of Fruits.

(Open to all, professional and amateur, Open also to Agricultural or Horticultural Societies.)

1. Apples, collection of 40 varieties, named, 4 of each \$20	12	6
2. Pears, collection of 20 varieties, named, 4 of each 15	10	5
1. Plums, collection of 20 varieties, named, 6 of each 12	10	5
4. Peaches, collection of 12 varieties, named, 6 of each ...	12	8 4
5. Grapes, grown in open air, collection of 20 varieties named, 3 bunches of each ...	15	10 5
6. Grapes, collection Hybrid Seedling, not more than 3 bunches each ...	8	5 3

CLASS 5—Garden Vegetables.

1. Salsify, twelve roots ...	\$2	I	0
2. Cauliflower, three heads ...	2	I 50	I

For Regulations regarding Medals and Diplomas, see page 16 of this Prize List.

Sect.		1st	2nd	3rd
3.	Cabbage, three heads early (any variety), not here- after mentioned	2	I	0
4.	Cabbage, three heads Winningstadt	2	I	0
5.	" three heads (any new variety)	2	I	0
6.	" three heads (St. Denis)	2	I	0
7.	" three heads (Henderson's summer)	2	I	0
8.	" three heads (Drumhead)	2	I	0
9.	" four sorts winter, including Savoy's, 1 of each sort... ..	3	2	0
10.	" three heads red	2	I 50	I
11.	" twelve intermediate or half long	2	I 50	I
12.	" twelve early horn	2	I 50	I
13.	Cucumbers, best two White Spine... ..	I	0 00	0
14.	" Long Green	I	0 00	0
15.	Brussels Sprouts, best 2 stalks	I	0 00	0
16.	Peppers, best collection	I	0 00	0
17.	Mushrooms, best plate of, raised artificially	I	0 00	0
18.	Artichokes, best plate	I	0 00	0
19.	Parsnips, twelve table	2	I 50	I
20.	Celery, six roots, white	2	I 50	I
21.	" six roots, red	2	I 50	I
22.	Capsicums, dozen (ripe)	2	I 50	I
23.	" collections of (ripe)	3	2	I
24.	Egg plant fruit, purple (best collection)	2	I 50	I
25.	Tomatoes, six (Trophy)	2	I	0
26.	" six (Gen. Grant)	2	I	0
27.	" six (Cook's Favorite)... ..	2	I	0
28.	" six (Acme)... ..	2	I	0
29.	" six (Conqueror)	2	I	0
30.	" six (Demsey's seedling)	2	I	0
31.	" six (large yellow)	2	I	0
32.	" six any other variety	2	I	0
33.	*Tomatoes, assorted collection of... ..	5	4	2
34.	Beets, six blood, long	2	I 50	I
35.	" six turnip rooted	2	I 50	I
36.	Onions, twelve of white... ..	2	I 50	I
37.	" twelve of yellow	2	I 50	I

*Specimen of Foliage, with Tomatoes on, must be shown for each variety.

For regulations regarding Medals and Diplomas, see page 16 of this Prize List.

2nd	3rd	SECT.	1st	2nd	3rd
I	O	38. Onions, twelve of red	2	I 50	I
I	O	39. Onions, one quart pickling... ..	I 50	I	O
I	O	40. Leeks, best bunch of 1 doz	I	O	O
I	O	41. Turnips, twelve white (table)	2	I 50	I
I	O	42. " twelve yellow (table)... ..	2	I 50	I
I	O	43. Corn, twelve ears sweet corn, fit for the table	2	I 50	I
I	O	44. Beans, French, quart (pods)	2	I	O
2	O	45. Radish, six winter	2	I	O
I 50	I	46. Kale, three Scotch	2	I	O
I 50	I	47. Herbs, collection pot and sweet	2	I	O
I 50	I	48. Potatoes, six varieties of, for garden cultivation, half peck of each sort, named	4	3	2
O 00	O	49. " six new varieties, never before exhibited	4	3	2
O 00	O	50. Squashes, three varieties, table	2	I 50	I
O 00	O	51. Vegetable Marrow, two	2	I	O
O 00	O	52. Carrots, (early) best 10	I	O	O
O 00	O	53. " (late) best 10	I	O	O
I 50	I	54. Greatest variety of vegetables (distinct from other entries) each kind named	6	4	2
I 50	I	55. Extra Entries	O	O	O

CLASS 6.—Domestic Wines.

Part 1.—Professional and Commercial List.

1. Half dozen dry wines	\$6	\$4	\$0
2. Half dozen sweet wines	6	4	O
3. Half dozen sparkling wines	6	4	O
4. Half dozen Canada claret	6	4	O

Part 2.—Professional and Commercial Wine-Makers excluded.

5. Three bottles of dry wine, white	6	3	2
6. Three bottles of dry wine, red	6	3	2
7. Three bottles of sweet wine, white	4	2	O
8. Three bottles sparkling wine	4	2	O
9. Three bottles of any other sort of grape wine	4	2	O
10. Extra Entries	4	2	O

[All wines to be exhibited in a uniform manner and quantity, in the ordinary quart bottle, known as the English wine bottle. All wines in part 2 to be from the hardy Grape.] Style of putting up to be taken into consideration.

For Regulations regarding Medals and Diplomas, see page 16 of this Prize List.

h variety.

ize List.

MANUFACTURES AND INDUSTRIAL DEPARTMENT.

Class I—Cabinet Ware and Upholstery.

(*Entrance Fee, One Dollar.*)

SECT.	1st.	2nd
1. Bed Room Furniture, set of	20	10
2. Dining Room Furniture, set of	15	10
3. Drawing Room Furniture, set of	20	10
4. Office Furniture, Assortment of	8	6
5. School Furniture, Assortment of	10	8
6. Library Furniture, Assortment of... ..	10	8
7. Book Case	12	6
8. Side Board... ..	10	5
9. Extension Dining Table	8	4
10. Centre Table	10	6
11. Card Table	8	4
12. Billiard Table	20	12
13. Ladies' Work Stand	8	4
14. Parlour Writing Desk	8	4
15. Office Desk	8	5
16. Ladies' Writing Desk	5	3
17. Drawing Room Sofa or Divan	6	3
18. Extension Lounge or Couch	6	3
19. Child's Crib	5	2
20. Whatnot	5	2
21. Hat Stand or Hall Tree	6	4
22. Chairs, Wood Seat, 6 assorted, painted	6	4
23. Chairs, Cane do. ... do.	7	4
24. Chairs, Upholstered, 6 assorted	10	6
25. Invalid's Chair	8	4
26. Dental Chair	10	5
27. Easy Arm Chair	6	4
28. Fancy Chair	5	3
29. Camp Chair	6	3
30. Smoking or Lounging Chair	5	2
31. Willow or Rattan Chairs, best display of	8	4
32. Best piece of Furniture of original design, if recommended by Judges	10	6

For Regulations regarding Medals and Diplomas, see page 16 of this Prize List.

ARTMENT.

ery.

1st.	2nd
20	10
15	10
20	10
8	6
10	8
10	8
12	6
10	5
8	4
10	6
8	4
20	12
8	4
8	4
8	4
8	5
5	3
6	3
6	3
5	2
5	2
6	4
6	4
7	4
10	6
8	4
10	5
6	4
5	3
6	3
5	2
8	4
10	6

SECT.	1st	2nd
33. Mantel, best wood	10	5
34. Window Cornices	8	4
35. Carving in Wood, other than for building purposes and not connected with any other article on exhibition	10	6
36. Veneers from Canadian Woods, undressed ...	6	3
37. Veneers from do. do., dressed and polished ...	6	3
38. Inlaid Woods	8	4
39. Mantel Mirror, large size	10	5
40. Pier Mirror and Base	10	5
41. Mirror Brackets	5	3
42. Wall Pockets and Brackets by Amateurs, best design and workmanship, in Fret work	6	2
43. Scroll and Fretwork	5	3
44. Rustic Wood Work, best display of	10	6
45. Covering for Furniture, assortment of	6	3
46. Curled Hair Mattress... ..	5	2
47. Spring Mattress	6	3
48. Spring Bed Bottom	4	2
49. Slat Bed Bottom	4	2
50. Extra Entries.		

**Class 2.—House Furnishings, Brushes, Brooms,
Washing Machines, &c.**

1. Refrigerator for family use	6	3
2. " for hotel use	8	4
3. Water Filter	5	2
4. Clothes Wringer	6	3
5. Mangle	5	2
6. Washing Machine	8	4
7. Brooms, Corn, assortment of	4	2
8. Brooms, hair, do.	5	2
7. Brushes for miscellaneous purposes, assortment of	4	2
10. Brushes, for painter's use, assortment of ...	8	4
11. Bird Cages, assortment of	4	2
12. Lamps, assortment of	5	3
13. Improved Sad Irons	5	2
14. Combined fluting, smoothing and polishing Irons	5	2

his Prize List.

For Regulations regarding Medals and Diplomas, see page 16 of this Prize List.

SECT.	1st	2nd
15. Willow Ware, assortment of	6	3
16. Washtubs and Pails, Factory made, assortment of	6	3
17. Casks, Barrels, Kegs, &c., Machine made	6	3
18. Casks, Barrels, Kegs &c., Hand made	6	3
19. Hollow Wooden Ware, turned	6	3
20. Assortment of Tool Handles	4	2
21. Hand Turning, samples	5	2
22. Machine Turning, samples	5	2
23. Children's Carriages	6	3
24. Children's Waggons, Carts and Wheelbarrows ...	6	3
25. Apple Parers and Corers, assortment of	5	3
26. Display of House Furnishings	8	4
27. Extra Entries		

Class 3—Boats, Diving Apparatus, Life Preservers, Fire Escapes, etc.

1. Model of Steam Vessel	5	5
2. do of Sailing Vessel	4	2
3. Pleasure Sail Boat	8	4
4. Rowing Boat	5	3
5. Wooden Canoe	4	2
6. Bark Canoe	5	2
7. Life Boat and Appliances	12	6
8. Life Saving Raft	10	5
9. Shooting Skiff, 15 feet or under	4	2
10. Family Pleasure Boat, skiff, or square stern ...	5	3
11. Single Scull, sliding-seat (inrigged)	5	3
12. Double Scull	5	3
13. Single Scull, Wood racing Shell, (outrigged) ...	5	2
14. Double Scull, do do do	8	4
15. Four-oared do do do	4	2
16. Assortment of Sculls	4	2
17. do of Oars	8	4
18. Appliances for launching Life Boat	5	3
19. Life Preservers	5	3
20. Rowlocks, (swivel)	5	3
21. Best Exhibit of Boats	15	10
22. Assortment of Ships' Blocks	6	3
23. Diving Armour and Appliances	10	6

For Regulations regarding Medals and Diplomas, see page 76 of this Prize List.

		SECT.				1st	2nd
	1st	2nd					
	6	3	24.	Fire Escape, in operation	...	15	10
f	6	3	25.	Fire Extinguisher, self-acting or chemical	...	5	3
	6	3	26.	Fire Engine, portable steam, in operation	...	15	8
...	6	3	27.	do do hand, do	...	10	5
	6	3	28.	do stationary steam, do	...	12	6
...	4	2	29.	do do hand, do	...	10	5
	5	2	30.	Extra Entries			
	5	2					
	6	3					
	6	3					
	5	3					
	8	4					
Class 4—Carriages, Sleighs, and parts thereof.							
			1.	Two-Horse Family Carriage, 3 seats	...	12	6
			2.	One-Horse do do	...	8	4
			3.	Two-Horse Carriage, Hack	...	12	6
			4.	One-Horse do do	...	8	4
			5.	Barouche	...	8	4
			6.	Brougham	...	8	4
re Escapes, etc.			7.	Park Phaeton (covered)	...	7	2
	5	5	8.	do (uncovered)	...	6	2
	4	2	9.	Rockaway	...	8	4
	8	4	10.	Dog Cart or Gig	...	8	4
	5	3	11.	Trotting Sulky	...	4	2
	4	2	12.	Buggy, double seated, covered, for one or two horses	...	8	4
	5	3	13.	Buggy, double seated, uncovered, for one or two horses	...	7	3
	12	6	14.	Buggy, single seated, covered	...	5	3
	10	5	15.	do do uncovered	...	5	3
	4	2	16.	Omnibus	...	12	6
	5	3	17.	Waggon, unpainted	...	5	3
	5	3	18.	Light Express Waggon	...	8	4
	5	2	19.	Bakers' Waggon	...	8	4
	8	4	20.	Express Waggon for heavy work	...	8	4
	4	2	21.	Two-horse Farm Waggon for heavy work, thimble skein, iron axle	...	5	3
	8	4	22.	One-Horse Spring Market Waggon	...	5	3
	5	3	23.	do Cart	...	5	3
	5	3	24.	Waggonette	...	5	3
	15	10	25.	Child's Carriage (Perambulator)	...	4	2
	6	3	26.	Three-seated Family sleigh	...	8	5
	10	6	27.	Two-seated do	...	8	5

of this Prize List.

For Regulations regarding Medals and Diplomas, see page 16 of this Prize List.

SRCT	1st	and
28. Sleigh, Hack, for two horses	8	5
29. do for one horse	8	5
30. Cutter, one-horse pleasure	5	3
31. Four-in-hand Sleigh	15	10
32. Trotting Sleigh	5	3
33. Cariole	6	3
34. Express Sleigh	5	3
35. Pair of Bob Sleighs	5	3
36. Display of Bent Waggon or Carriage Timber ...	8	4
37. Assortment Sleigh and Carriage Ornaments and Trimnings	10	5
38. Spokes and Hubs, assortment of	6	3
39. Felloes, bent, 12 sets	7	4
40. Improved Hubs, turned, assortment of ...	5	3
41. Assortment of Carriage Wheels, Rims & Felloes	10	6
42. Improved Wheel Tire	8	4
43. Wrought Iron Axles, 3 patterns	7	3
44. Steel Axles, 2 patterns	6	4
45. Assortment Carriage Forgings	5	3
46. do do Hardware	8	4
47. do Carriage, Waggon and Buggy springs ...	8	4
48. do Carriage and Coach Lamps	8	4
49. do of Top Covers, Seats, Rails, &c., &c. ...	8	4
50. Truck for lumbering purposes... ..	8	4
51. Carriage Jack	5	3
52. Vehicles, best display of ... Diploma		
53. Carriage Door Fastener, new invention, Diploma and	10	
54. Extra Entries.		

**Class 5—Building Materials, Painting, Marble Work,
Bricks, Tiles, Slates, Plaster Work, &c.**

PART 1.—Bricks, Tiles, &c.

1. Collection Pressed, Plain and Moulded White or Red bricks	10	5
2. Collection Common, Plain, Moulded and Bevelled Bricks	8	4

For Regulations regarding Medals and Diplomas, see page 16 of this Prize List.

PRIZE LIST.

61

SRCT.		1st	2nd
3.	Common Building Bricks, one dozen ...	6	3
4.	Specimen of Hydraulic Lime ...	6	3
5.	do Cement ...	6	3
6.	Assortment or Slate Flooring Tiles, Table Tops, Steps and Slabs ...	8	4
7.	Assortment of Wash Trays, Sinks, Water Tanks, and other manufactures of slate for domestic purposes, Diploma and ...	5	3
8.	Assortment of School Slates and Pencils ...	6	3
9.	do Roofing Slates ...	5	2
10.	do Ornamental Tiles ...		
11.	do Tile Pipe for drainage, with traps, junctions, bends, &c. ...	5	2
12.	Composition for Paths, Cellars, Floors, &c. ..	5	2
13.	Specimen of Artificial Stone, for decorative purposes in connection with building ...	5	2
14.	Mantelpiece in Marble, of any kind ...	10	5
15.	do in Canadian Marble ...	8	4
16.	do in Marbleized Slate ...	6	3
17.	Monument in Canadian Marble ...	15	8
18.	do in Canadian Granite ...	15	8
19.	Specimen of Carving in Marble, other than sculpture ...	8	4
20.	Specimen of Carving in Stone, for building purposes ...	8	4
21.	Assortment of Marble Work for Plumber's use ...	8	4
22.	Assortment of Centre Pieces in Plaster, from designs and carvings made in Canada ...	8	4
23.	Assortment of Cornices and other Ornaments in Plaster, from designs and carvings made in Canada ...	6	3
24.	Assortment of Brackets in Plaster, from designs and carvings made in Canada ...	8	4
25.	Extra Entries.		

PART 2.—Wood Work for Building Purposes.

26.	Assortment of Machine made Mouldings...	8	4
27.	do Window Blinds, Sashes and Doors, Machine or Hand made ...	6	3

For Regulations regarding Medals and Diplomas, see page 16 of this Prize List.

Sect.	1st	2nd
28. Entrance or Room Door in Pine, with architraves and trimming complete, design and workmanship to be considered	8	4
29. Entrance or Room Door in Black Walnut or other hard wood, with architraves and trimming complete, design and workmanship to be considered	8	4
30. Newel post in Black Walnut or other hard wood or woods	6	3
31. Assortment of Turner's Work for building purposes	5	2
32. Specimen of Carving in Wood for decorative building purposes	8	4
33. Assortment of Scroll Cut Wood for building purposes	6	3
34. Extra Entries.		

PART 3.—Painting and Glass Work for Building and other Purposes.

35. Specimen Painting in imitation of woods & marble	10	5
36. Panel or other designs in Fresco Painting ...	8	4
37. Sign Painting, specimens of	10	5
38. Figure Painting on Glass	8	4
39. Gilding on Glass, gold or silver	8	4
40. Window Shade painting	8	4
41. Assortment of Show Cards	10	4
42. Lettering on Glass	8	4
43. do on Wood or Metal, design to be considered	8	4
44. do on Paper	6	3
45. Assortment of Cut or Engraved Panels for use in buildings or cars	10	5
46. Assortment of Painted and Leaded Glass Panels	6	3
47. do of Stained Glass Windows, with figures	10	5
48. do do do without figures	6	3
49. Extra Entries.		

PART 4.—Plumbers Work, Brass Work, Iron Founders Work, and other Metal Work for Building Purposes.

50. Assortment of lead traps	6	3
51. Assortment of Brass compression cocks ...	6	3

For Regulations regarding Medals and Diplomas, see page 16 of this Prize List.

PRIZE LIST.

63

SECT.			1st	2nd
	52.	Assortment of Plated bath, basin, and other cocks	6	3
	53.	Assortment of valves for heating apparatus	5	2
4	54.	Water closet of Canadian manufacture	8	4
	55.	Assortment of Brass Door Latches	6	3
	56.	do of Plated Hinges, and Knobs	6	3
	57.	Assortment of Bronze Hinges and Knobs	6	3
4	58.	do of Window Bolts	5	2
	59.	do of Mortice and Rim Door Locks	6	3
3	60.	do of cast iron soil and waste pipes with junctions, traps, bends, &c.,...	8	4
2	61.	Assortment of cast iron screens for heating apparatus and door panels	6	3
4	62.	Assortment of cast Iron hot air and ventilating registers	6	3
3	63.	Assortment of Headers, bends, fittings, &c., &c., for heating apparatus	6	3
	64.	Assortment Cast Iron Baths, Sinks, Hoppers, &c.	6	3
oses.	65.	Assortment of Iron Stable Fittings	6	3
5	66.	Specimen of ornamental cast iron column	8	4
4	67.	Assortment of cast iron crestings and roof railings.	8	4
5	68.	Specimen wrought iron finale	6	3
4	69.	do wrought iron railing	6	3
4	70.	do cast iron gate	8	4
4	71.	do wrought iron gate	8	4
4	72.	Assortment of cast iron railings for building purposes, other than cresting	6	3
4	73.	Assortment Bronzed and Japanned iron ware for building purposes	8	4
4	74.	Specimen Dog irons in brass	6	3
3	75.	do Galvanized iron cornice work	6	3
5	76.	Cast iron Boiler for heating purposes	8	4
3	77.	Coil Furnace for do	6	3
5	78.	Boiler of any other kind for heating purposes...	8	4
3	79.	Exhibit of sanitary ware and appliances, consisting of water closets, basins, urinals, bath lead and other traps, of any manufacture	10	5
other	80.	Tinned Copper Bath	6	3
	81.	Copper Boiler for hot water	6	3
3	82.	Electric Bell in operation	8	4
3	83.	Pneumatic Bell in operation	6	4
ist.	84.	Extra Entries.		

For Regulations regarding Medals and Diplomas, see page 16 of this Price List.

Class 6—Engines, Machinery, Railway Appliances, &c.

(Entrance Fee, one Dollar; for Regulations regarding Machinery in motion, see page 14.)

PART 1.—Steam Engines, &c., and Connections.		1st	2nd
SECT.			
1	Stationary Steam Engine, not less than 20 horse-power, in operation	25	15
2.	Steam Engine, common slide valve, not less than 10 horse power, in operation	20	12
3.	Portable Steam Engine, in operation	15	10
4.	Reversible Hoisting Engine, in operation	12	6
5.	Donkey Engine	10	5
6.	Rotary Steam Engine, in operation	7	4
7.	Portable Steam Fire Engine, in operation	15	8
8.	Model of improved Steam Engine	10	5
9.	Steam Hammer, in operation	10	5
10.	Steam Engine for Farm use in operation	15	8
11.	Road Engine	20	10
12.	Boiler for Steam Engine	12	8
13.	Farm Boiler and Furnace	12	8
41.	Water Injectors and Ejectors	8	4
51.	Low Water Alarm or Indicator	5	3
16.	Steam Engine Governor	5	6
17.	do Gauge	5	8
18.	do Fog Whistle	12	8
19.	do Valves	3	3
20.	Safety Valves	4	2
21.	do Hydraulic Engine	12	6
22.	do Hoist	10	5
23.	Hand Hoist	5	3
24.	Gas Engine	15	8
25.	Engine worked by electricity	15	8
26.	Hose Couplings	5	3
27.	Extra Entries		

PART 2.—Steam Pumps, Water Wheels, Hand Pumps, &c.

1.	Steam Pump	10	5
2.	do for boiler feeding	10	5
3.	do for water works service	10	5

For Regulations regarding Medals and Diplomas, see page 16 of this Prize List.

PRIZE LIST.

65

SECT.		1st	2nd
4.	Centrifugal Pump	8	4
5.	Rotary Pump	6	3
6.	Metal Hand Pump for house use	5	3
7.	do do for ships' use	5	3
8.	Wooden Pump for farm, ship or other use	4	2
9.	Suction Pump for hand use ..	5	3
10.	Chain Pump	6	3
11.	Single acting lift or Force Pump	8	4
12.	Double acting lift or Force Pump	10	5
13.	Lift and Force Pump for outside use, anti-freezing	10	5
14.	Assortment of Well, Force and Cistern Pumps	12	8
15.	Turbine Water Wheel		
16.	Windmill in operation		
17.	Extra entries.		

PART 3.—Metal Working Machinery, Machinists' Work, Tools, etc.

1.	Planing Machine for Metals	10	6
2.	Turning Lathe for iron work	8	4
3.	do do for brass work	8	4
4.	Boring Lathe	8	4
5.	Lathe for irregular forms	6	3
6.	Steam Rock Drill	12	6
7.	Diamond Pointed Drill	10	5
8.	Hand Drilling Machine	6	3
9.	Radial Driller	6	3
10.	Ratchet Drill	8	4
11.	Screw Cutting Engine Lathe	6	3
12.	Steam Fitter's Vice	5	3
13.	Machinist's Vice	5	3
14.	Machinist's tools for working in metals, best and largest display of	15	8
15.	Shaping Machine	10	5
16.	Machine for cutting threads on bolts and nuts	8	4
17.	Milling Machine	12	6
18.	Power Shearing and Punching Machine	8	4
19.	Emery Grinding Machine	10	6
20.	Specimens of Shafting with hangers and couplings ...	8	4
21.	Fan Blower	8	4
22.	Self Oiler for Machines	5	3

For Regulations regarding Medals and Diplomas, see page 16 of this Prize List.

SECT.	1st	2nd
23. Flue Scraper and Cleaner	6	3
24. Power Blower	6	3
25. Blacksmith Blower, hand	8	4
26. do Bellows	5	3
27. do Forge	4	2
28. Portable Forge	5	3
29. Cupola Blower, for furnaces	6	3
30. Drop Press, for Stamping and Forging	10	5
31. Pulley Fastening, for Shafts	8	4
32. Rail Joint Fastener	8	4
33. Crushing and Grinding Machine	10	5
34. Locomotive Jack Screw	6	3
35. Foot Power Lathe, for Amateurs	5	3
36. Bolt Cutter	8	4
37. Set of Socks and Dies	6	3
38. Assortment of Lathe Chucks, Tools, Set and Cap Screws	10	5
39. Collection of Emery Wheels	8	4
40. Extra Entries.		

PART 4.—Mill and Factory Machinery.

1. Pegging Machine	10	5
2. Peg Breaking Machine	10	5
3. Bolting Cloth	8	4
4. Treeing Machine	8	4
5. Heel Trimming Machine	10	5
6. Heel Burnishing do	8	4
7. Edge Trimming do	8	4
8. Edge Burnishing do	8	4
9. Carding Machines, manufacturing set of	10	5
10. do for custom work	10	5
11. Canadian Ribbing Machine	8	4
12. Heel Forming and Attaching Machine	8	4
13. Sole Forming Machine	8	4
14. Leather Splitting Machine	8	4
15. Shoemakers' Rolling Machine	10	5
16. Sciving Machine	10	5
17. Scarfing Machine	10	5

For Regulations regarding Medals and Diplomas, see page 16 of this Prize List.

PRIZE LIST.

67

1st	2nd	Sect.	1st	2nd
6	3	18. Leather Belting Machinery		
6	3	19. Paper Cutting do	10	5
8	4	20. Paper Bag do	10	5
5	3	21. Book Rolling do	10	5
4	2	22. Printing Press, power and treadle	10	5
5	3	23. do hand	15	10
6	3	24. Bookbinders' Press	8	6
5	5	25. Platen Printing Press	8	4
8	4	26. Steam do	10	5
8	4	27. Card do	20	10
5	5	28. Dough Mixing Machine... ..	12	6
6	3	29. Baker's Break do	10	5
5	3	30. Cracker do	8	4
8	4	31. Spinning do	8	4
5	3	32. Weaving Loom, hand	8	4
5	5	33. do do power	8	4
4	4	34. Assortment Paper Collar Knives	10	5
		35. Bark Mill	8	4
		36. Brickmaking Machine	10	5
		37. Pressed Brick do	12	6
		38. Machine for making Tiles	10	5
5	5	39. Rope and Cordage Machine	10	5
5	5	40. Paint Mill	10	5
4	4	41. Lath Packing Machine	8	4
4	4	42. Shingle do	12	6
5	5	43. Extra Entries.	15	8

PART 5.—Machines for Flour Mills.

5	5	1. Portable Grist Mill	15	0
5	5	2. Millstones, pair of	10	0
4	4	3. Millstone Dresser	5	0
4	4	4. do Exhaust	6	0
4	4	5. Oat and Cockle Separator	5	0
5	5	6. Brush Polishing Machine	5	0
5	5	7. Middlings Crusher	10	0
5	5	8. Bran Disintegrator	5	0
5	5	9. Bran Duster	5	0
1st.		10. Middlings Purifier, on actual test	12	6

For Regulations regarding Medals and Diplomas, see page 16 this Prize List.

SECT.							1st	2nd
11.	Smut Machine	4	0
12.	Bran Aspirator	5	0
13.	Barley Separator	5	0
14.	Buckwheat Huller	5	0
15.	Wheat Meal Cooler	5	0
16.	Elevator Buckets	5	0
17.	Silent Feed and Curb	5	0
18.	Flour Packer	5	0
19.	Flour Mill Machinery, best display of	10	0
20.	Extra Entries							

PART 6—Lumbermen's Tools.

1.	Assortment Cant Dogs	8	4
2.	do Saw do	8	4
3.	do Timber Dogs	6	3
4.	do Swamp do	6	3
5.	do Sacking do	6	3
6.	Boom Chains	8	4
7.	Rafting do	8	4
8.	Crotch do	8	4
9.	Sack do	6	3
10.	Trace do	5	2
11.	Assortment Hand-pikes	8	4
12.	do Screw Picks	6	3
13.	do Marking Hammers	5	2
14.	do Saw Swages and Setts	5	2
15.	do Cleavices	5	2
16.	Extra Entries.							

PART 7.—Wood Working Machinery.

1.	Shingle Machine	10	5
2.	Morticing do Power	10	5
3.	do do foot	8	4
4.	Mitreing do power	8	4
5.	do do foot	6	3
6.	Moulding do four heads	8	4
7.	do do single head	6	3

For Regulations regarding Medals and Diplomas, see page 16 of this Prize List.

8.
9.
10. S
11. H
12. H
13. H
14. J
15. C
16. C
17. U
18. S
19. C
20. C
21. A
22. St
23. S
24. Tr
25. D
26. Cl
27. Sa
28. Su
29. Sp
30. H
31. Sh
32. Wi
33. Pos
34. Un
35. Doc
36. Buz
37. Ter
38. Bar
39. Ass
40. Ext

1 Disp
2. Loc
3. Auto

For regu

PRIZE LIST

69

SECT.

	1st	2nd
8. Planing and Matching Machine, single ...	8	4
9. do do double ...	8	4
10. Scroll Sawing Machine ...	5	3
11. Bevel Machine ...	5	3
12. Band Saw Machine ...	5	8
13. Panel do ...	5	3
14. Jig Saw ...	5	3
15. Cordwood Sawing Machine ...	5	3
16. Gang Saw and Frame ...	5	3
17. Upright Saw ...	5	3
18. Saw Gummer ...	5	3
19. Cross Cut Saw ...	5	3
20. Circular Saw and Frame ...	6	4
21. Assortment Circular Saws, Diploma and ...	5	3
22. Stave Cutter ...	15	6
23. Stave Jointer ...	5	3
24. Turning Lathe ...	8	4
25. Dovetailing Machine ...	5	3
26. Clothes Pin do ...	5	3
27. Saw Mill Head Blocks ...	5	8
28. Surface Planer ...	5	3
29. Spoke Dressing Machine ...	5	8
30. Hoop Machine ...	5	3
31. Shaping do ...	6	4
32. Window Blind Machines, set of ...	5	3
33. Post Boring do ...	5	3
34. Universal Wood Worker ...	6	4
35. Door Clamp ...	5	3
36. Buzz Planer ...	8	4
37. Tenoning Machine ...	5	3
38. Barrel Machine ...	6	3
39. Assortment Wood-working Machinery ...	4	
40. Extra Entries.		

PART 8 Railway Appliances.

1. Display of Railroad Supplies ...	15	8
2. Locomotive Head Light ...	8	4
3. Automatic Brake ...	12	6

For regulations regarding Medals and Diplomas, see page 16 of this Prize List.

SECT.						1st	2nd
4.	Improved Car Brake	8	4
5.	Car Lifter	12	6
6.	Assortment of Car Springs	15	8
7.	Car Coupling	12	6
8.	Railroad Joints	10	5
9.	Switch	12	6
10.	Frog	8	4
11.	Lamps for Passenger Cars	8	4
12.	Car Heater	12	6
13.	Car Ventilator	10	5
14.	Street Railway Car	15	8
15.	Dining Room Car	25	10
16.	Parlor Car	25	10
17.	Drawing Room Car	25	10
18.	Sleeping Car	25	10
19.	First Class Passenger Car	25	15
20.	Second do do	20	12
21.	Express and Postal Car	20	12
22.	Freight Car	20	10
23.	Platform Car	15	8
24.	Railroad Axle Boxes	8	4
25.	Electric Signal	6	3
26.	Extra Entries.						

Class 7.—Mechanical and Metal Work, including
Stoves, Castings, Hardware, Fire Arms, Safes,
Gas Fixtures, Jewellery, &c., &c.

PART 1.—Stoves, Furnaces, Grates, Castings, Hollow Ware, &c.

No money prizes will be given for Stoves, Ranges, or Grates, but medals or diplomas may be awarded for such new inventions and improvements as may be considered worthy.

1. Cooking Stove, for wood
2. do do for coal
3. Cooking Family Range

For Regulations regarding Medals and Diplomas, see page 16 of this Prize List.

PRIZE LIST.

71

SECT.

						1st	2nd
4	do	Hotel	do		
6	5.	do	Portable	do	...		
8	6.	Parlor Stove,	for wood		
6	7.	do	for coal		
5	8.	Cheap Cooking and Heating Stoves,	suitable for				
6		workingmen's dwelling			
4	9.	Hall Stove,	for wood		
4	10.	do	for coal (illuminated base burner)	...			
6	11.	Coal Grate Stove			
5	12.	do	Fireplace complete, including setting of				
8		grate			
10	13.	Hot Air Furnace			
10	14.	Laundry Stove			
10	15.	System of warming and ventilating buildings, illus-					
10		trated by model or drawings	6	3	
15	16.	Coal Oil Stove			
12	17.	Gas Stove			
12	18.	Display of Hollow Ware for Stoves, Ranges, &c	8	3	
10	19.	Display of Enamelled Hollow Ware	8	3	
8	20.	Assortment of Castings for Stoves	6	3	
4	21.	Set of Dog Irons for grate or fireplace	6	3	
3	22.	Improved Stove Pipe Damper	5	2	
	23.	Improvement in Stove Pipes	6	5	
	24.	Crimped Stove Pipe Elbows	5	2	
	25.	Apparatus for warming houses by Flues	6	3	
	26.	do	do	by Steam	6	3	
	27.	do	do	by Hot Water	6	3	
	28.	Extra Entries.					

PART 2. Castings, Iron Fencing, &c.

1.	Castings for General Machinery	8	4
2.	do for Railway Cars and Locomotives	10	5
3.	Set of Railroad Car Wheels	5	0
4.	Cast Wheels, spur or bevel, not less than 50 lbs weight	8	0
5.	Cast Iron Work, ornamental, assortment of	10	0
6.	Cast Iron Fountain	15	10
7.	Assortment Iron Fencing	8	6

For Regulations regarding Medals and Diplomas, see page 16 of this Prize List.

SECT.						1st	2nd
9.	do	Statuary	10	8
9.	do	Pavillion	8	6
10.	do	Chairs	5	4
11.	Specimens of Castings, for millwright and machinist's work					8	6
12.	Assortment Malleable Cast Iron Steam and Gas Pipe Fittings					8	6
13.	Assortment Malleable Castings for Carriages and Saddlery					8	6
14.	Extra Entries.						

PART 3.—Mechanics' Tools, Horse Shoes, etc.

1.	Assortment of Augers, Bits and boring tools for wood					10	5
2.	Assortment Planes					6	3
3.	Assortment Axes and Adzes					8	4
4.	Assortment Hammers, Mauls and Picks					6	3
5.	Assortment Spades and Shovels					8	4
6.	Assortment of Files and Rasps					8	4
7.	Assortment Carriage Bolts					6	3
8.	Assortment Machine do					6	3
9.	Bolts and Nuts, assortment					6	3
10.	Assortment Spikes					6	3
11.	Assortment Horse Shoe Nails, hand made					6	3
12.	Assortment Horse Shoe Nails, machine made					6	3
13.	Assortment Edge Tools, for carpenters and coopers					10	5
14.	Assortment of Trowels					5	3
15.	Extra Entries.						

PART 4—Fire Arms, Safes, Cutlery, Scales, Hardware, Bells, etc.

1.	Fire Arms, Assortment					8	4
2.	Hunting Equipments, collection					6	3
3.	Rifle, Breach Loading					6	3
4.	Sporting Gun					6	3
5.	Revolvers, collection of					6	3
6.	Table Cutlery, assortment					8	4
7.	Skates, assortment					6	3

For Regulations regarding Medals and Diplomas, see page 16 of this Prize List.

SECT.

8. S

9. S

10. S

11. S

12. S

13. S

14. S

15. C

16. L

17. P

18. N

19. N

20. N

21. S

22. L

23. C

24. B

25. B

26. E

1. S

2. C

3. C

4. C

5. C

6. S

7. W

8. I

9. S

10. C

11. G

12. T

13. P

14. B

15. J

16. G

For

SECT	1st	2nd
8. Skates, patent improved	6	5
9. Scales, Counter, assortment	8	4
10. Scales, Platform, do	10	5
11. Safe, Burglar Proof	12	8
12. Safe, Fire Proof	12	8
13. Safe, Fire and Burglar Proof, combined	15	8
14. Set of Vault and Safe Doors	8	4
15. Combination Safe Lock	6	3
16. Locksmith's Work	6	3
17. Pad Locks, &c., assortment	6	3
18. Nails, cut, 25 lbs each size, assortment	5	2
19. Nails, pressed, 25 lbs each size, assortment	5	2
20. Nails, hot pressed	5	2
21. Screws, assortment	6	3
22. Light Forgings, assortment	6	3
23. Coffee Mill	5	2
24. Bells, church and school, assortment	8	4
25. Bells, hand, assortment	6	3
26. Extra Entries.		

**PART 5. Metal and Wire Work, Gas and Lamp Fixtures,
Lead Pipe, &c., &c.**

1. Sheet Brass Work, hand made, an assortment ...	6	3
2. do do Machine made do... ..	6	3
3. do Copper Work, Machine made, do	6	3
4. do Copper Work, hand made do	6	3
5. do Iron Work, an assortment	6	3
6. Sheet Zinc Work, do	6	3
7. Wire Work do	6	3
8. Iron Wire do	4	2
9. Steel Wire do	4	2
10. Copper Wire do	4	2
11. Galvanized Wire do	4	2
12. Tinsmith's Work do	6	3
13. Pressed Tinware do	6	3
14. Britannia Metal Ware do	6	3
15. Japanning on tin or other metal	6	3
16. Gas Fixtures, including Pendants, Brackets, &c., an assortment	10	5

For Regulations regarding Medals and Diplomas, see page 16 of this Prize List.

17. Lamp Fixtures, including Pendants, Brackets, &c., an assortment	10	5
18. Water and Gas Pipes, assortment of	5	3
19. Lead Pipes, seamless, an assortment	5	2
20. Lead Shot, an assortment	5	2
21. Bathing Apparatus and Bath Room Fixtures ...	6	3
22. Soda Fountain Apparatus	6	3
23. Extra Entries.		

PART 7. Electro and Nickleplating, Gold & Silversmith's Work, Jewellery, &c.

1. Specimen of Electroplating in Gold	6	3
2. do Nickel-plating and Burnishing	6	3
3. do Silver-plating do	6	3
4. Collection of Electro-plated Ware	10	5
5. Gold Plated Jewellery, assortment	6	3
6. Gold Chains and Guards, assortment	5	2
7. Gold Locketts, assortment	5	2
8. Gold Broaches and Earrings, assortment ...	5	2
9. Gold Pens, assortment	5	2
10. Silver Jewellery, assortment	5	2
11. Medals, Gold and Silver, assortment	6	3
12. Clocks, assortment	8	4
13. Watch Movements, only, assortment	6	3
14. Bronze Work, collection of	6	3
15. Hair Jewellery, assortment	6	3
16. Diamond setting, raised and solid, specimen of ...	6	3
17. Jewel Cases, assortment, Diploma and	8	4
18. Counter Cases, " Diploma and	8	4
19. Extra Entries.		

Class 8.—Earthenware, Glass, Pottery, &c.

PART 1.—Earthenware, Pottery, and Clay Work, &c.

1. Best collection of Pottery Ware	6	3
2. Assortment decorated Stone and Earthenware ...	10	5
3. Assortment Plain White Granite Ware	10	5
4. do Cream Colour Ware	8	4

For regulations regarding Medals and Diplomas, see page 16 of this Prize List.

SKOT.

5. C

6.

7.

8.

9.

10.

11.

12.

13.

14. St

15. CL

16. CL

17. Ch

18. Ex

1. Sp

2.

3.

4. Ass

5. Ass

6. Em

7. En

8. Etc

9. Spe

10. Spe

11.

12.

13. Exl

14. Ext

For Ro

SECT.

					1st	2nd
5.	Collection of Gold and Enamel Colour Decorated Ware		
6.	do Plain C. C. Ware		
7.	do Painted, Sponged or other C. C. Ware		
8.	do Ware in Coloured Bodies		
9.	do Ware in Vitrified Bodies, white or colored		
10.	do Parian and Porcelain Ware		
11.	do Stone Ware	8	4
12.	do Rockingham Ware	6	3
13.	do Red Ware	6	3
14.	Stench Traps for Drains	8	4
15.	Clay Smoking Pipes	5	2
16.	Clay, for Potters' use	5	2
17.	Chimney Caps	6	3
18.	Extra Entries					

PART 2. Glassware, &c.

1.	Specimens of Flint Glass, Plain	10	5
2.	do do pressed	10	5
3.	do Cut Glass	8	4
4.	Assortment of Glassware, Canadian manufacture		
5.	Assortment of Glass Globes and Chimneys	8	4
6.	Embossed Glass	8	4
7.	Engraving on Glassware	8	4
8.	Etching on Glass	6	3
9.	Specimens of Common Bottle Glass, an assortment	5	3
10.	Specimen of Plate Glass	10	5
11.	do White Composition Glass	8	4
12.	do Sand Blast Engraving on Glass	8	4
13.	Exhibition of Fancy Glassware	12	6
14.	Extra Entries					



Class 9—Leather, Saddlery, Hose, Trunk Makers' Work, Boots, Shoes, etc.

PART 1—Leather, Saddle and Harness Stock.

SECT.						1st	2nd
1.	Three Sides Sole Leather	6	3
2.	do	Pebble Grain Leather	6	3
3.	do	Buff	do	6	3
4.	do	Split	do	6	3
5.	Enamelled	do	6	3
6.	Patent Grain Leather, 20 feet	6	3
7.	Sole Leather, Spanish, 3 sides	6	3
8.	do	Slaughter, 3 sides	6	3
9.	Upper Leather, Waxed, 3 sides	6	3
10.	do	Grained, 3 sides	6	3
11.	Hose Leather, Specimen of	6	3
12.	Belt	do	3 whole butts and stretched	3 butts, cut and	...	6	3
13.	Piano	do	do	6	3
14.	Card Leather	6	2
15.	Moccasin Leather, 3 sides	5	3
16.	Morocco	do	6	3
17.	Top Cover Carriage Leather, 3 skins, whole	6	3
18.	Harness Leather, 3 sides	6	3
19.	Skirting	do	2 sides for saddles	6	5
20.	Six Calf Skins, satin finished	6	3
21.	do	do	waxed	6	3
22.	Lace Leather, 30 lbs	6	3
23.	Six Sheep Skins, coloured	6	3
24.	do	do	bark tanned	6	3
25.	do	do	dressed with the hair and coloured	6	3
26.	Three Deer Skins, dressed	6	3
27.	Three Kid	do	do	6	3
28.	Pebbled Goat Leather	6	3
29.	Four sides Cow Hide, buffed	6	3
30.	do	do	pebbled	6	3
31.	do	do	patent	6	3
32.	do	do	enamelled	6	3
33.	Six sides Kip	6	3

For Regulations regarding Medals and Diplomas, see page 16 of this Prize List.

PRIZE LIST.

77

SECT.

	1st.	2nd.
34. Three Hog Skins, for saddles	6	3
35. Buckskin	5	3
36. White Horse Hide... ..	5	3
37. Oak Tanned Leather, assortment of	6	3
38. Leather Belting	10	5
39. Display of Saddle and Harness Leather	10	5
40. Extra Entries.		

PART 2.—Saddlery, Harness, &c.

1. Specimen Check for Horse Collars	4	2
2. Assortment Hames for Carriages and Gigs	6	3
3. do do Team or Cart	8	4
4. do Bridle Fronts and Housings	6	3
5. do Whip Lashes	4	2
6. Imitation of Buck Skin made from Calf Skin	5	2
7. do do do Sheep Skin	5	2
8. Assortment Dog Thongs	4	2
9. Hunting Thong, English	4	2
10. Birch Thong	4	2
11. Best Set Double Carriage Harness	10	8
12. Set Single do do	8	4
13. Set Canadian Double Team Harness	10	8
14. do Cart Harness	6	3
15. Assortment Horse Collars for Carriage Harness, 4 kinds	6	3
16. Assortment Horse Collars for Working Harness, 4 kinds	6	3
17. Water Proof Collars	5	2
18. Ladies Saddles	6	3
19. Gentleman's Saddles	6	3
20. Steeplechase Saddles	5	2
21. Hunting Saddles	5	2
22. Quilted Shaftoe Saddles	5	2
23. Double Set Scotch Canadian Dray Harness	6	3
24. do do Silver Mounted Harness	8	4
25. Double Set Scotch Canadian Brass Mounted Harness	8	4

For Regulations regarding Medals and Diplomas, see page 16 of this Prize List.

SECT.	1st	2nd
26. Check for horse collars, 20 yds. of 40 inch, 1 lb. per yard	6	3
27. Brown Strap and Bridle, 2 sides of each	5	2
28. Kersey for horse clothing	5	3
29. Assortment Harness Rosettes	4	2
30. Extra Entries.		

PART 3.—Rubber, Hose and Trunk Makers' Work, &c.

1. Copper Rivetted Hose and Flexible Branch attached, 20 feet	10	5
2. Assortment of Rubber Hose	8	5
3. do Rubber Belting	8	4
4. do Rubber Overshoes and Boots, &c.	8	4
5. Rubber Clothing, Diploma and	6	4
6. Assortment Rubber Goods not mentioned above	8	4
7. Saratoga Trunk	10	5
8. Solid Leather Trunk	8	4
9. Travelling Trunk	6	3
10. Display of Trunks, not less than 10 in number	15	8
11. Hand Valise, Leather	5	2
11. Assortment of Hand Carpet Travelling Bags	5	2
12. do do Leather do	8	4
13. Leather Mail and Express Bags	8	4
14. Linen do do	8	4
15. Cotton Duck do	6	3
16. Extra Entries.		

PART 4. Boot and Shoemaker's Work, Tools, &c.

1. Assortment of Gent's Hand-made Sewed Boots and Shoes	10	5
2. do Gent's Machine-made Boots and Shoes	8	4
3. do Ladies' Hand-made Sewed Boots and Shoes	8	4
4. do Ladies' Machine-made Boots and Shoes	8	4
5. do Children's Hand-made Sewed Boots and Shoes	6	3
6. do Children's Machine-made Boots and Shoes	6	3

For Regulations regarding Medals and Diplomas, see page 16 of this Prize List.

PRIZE LIST.

79

2nd	SRCT.		1st	2nd
3	7.	do Men's and Boy's Boots, (long work) hand or machine pegged	5	2
2	8.	do Men's and Boy's Boots, (short work), hand or machine pegged	5	2
3	9.	do Women's, Misses' and Children's Shoes	8	4
2	10.	Assortment of Men's and Women's Shoes, machine sewed or cable	8	4
	11.	do Misses' and Children's Shoes, machine sewed or cable	6	3
5	12.	do Balmoral Gaiters, Oxford Ties, Hand made	8	4
5	13.	do Balmoral Gaiters, Oxford Ties, Machine made	8	4
4	14.	do Gent's Congress Gaiters, Hand-made	8	4
4	15.	do Gent's Congress Gaiters, Machine-made	6	3
4	16.	do Gent's Wellington Boots, Hand-made	6	3
5	17.	do Gent's Wellington Boots, Machine-made	5	2
4	18.	do Felt Overshoes	8	4
3	19.	do Boot and Shoe Uppers	6	8
8	20.	do Shoemakers' Lasts and Trees	9	4
2	21.	do Shoemakers' Nails and Rivets	5	2
2	22.	do Shoe Pegs	4	2
4	23.	do Ribbon Pegs	4	2
4	24.	do Shoemaker's Tools	10	5
4	25.	Extra Entries.		

Class 10—Paper, Printing, Book-Binding, Manufactures of Paper, Ink, &c.

5	1.	Specimen Letter-Press Book Printing, Plain	6	3
4	2.	do do Job, ornamental	8	4
4	3.	do do do in colors	10	4
4		exhibiting a variety of type and skill in combination and arrangement in colors.		
3	4.	Assortment Printing Type, plain	8	4
	5.	do do ornamental	10	5
	6.	Specimen of Book-binding, full morocco	8	4

For Regulations regarding Medals and Diplomas, see page 16 of this Prize List

SECT.		1st	2nd
7.	Specimen of Book-binding, full calf, marble edge ...	8	4
8.	Specimen of Book-binding,, half calf library ...	6	3
9.	do Merchants' Blank Book, full calf Russia bands ...	6	3
10.	Book Binding, an assortment ...	10	5
11.	Assortment of school Books printed in Canada ...	10	5
12.	Assortment of Writing, Letter and Note Paper, ruled and unruled ...	10	5
13.	Assortment of Writing Foolscap and Folio Post ...	10	5
14.	Assortment Book and Job Printing Paper ...	10	5
15.	Specimen News Printing Paper ...	10	5
16.	Assortment of Envelopes ...	8	4
17.	do Wrapping Paper, either common grey, brown or manilla, one ream of each ...	8	4
18.	Assortment of Blotting Paper, 1 ream of each ...	6	3
19.	do Colored Paper, 1 ream of each ...	6	3
20.	Bundle Mill Board ...	5	2
21.	Bundle Straw Board ...	5	2
22.	Ream Collar Board ...	5	2
23.	Collection of Wall Paper, Canadian manufacture ...	10	5
26.	do Decoration Design in Wall Paper, with dado for parlor, Canadian manufacture ...	8	4
27.	do Decoration Design in Wall Paper for Hall and Staircase, Canadian manufacture ...	8	4
28.	do Wall Paper ...	10	5
29.	do Decoration Design in Wall Paper, with dado for Parlor ...	8	4
30.	do Decoration Design in Wall Paper, for Hall and Staircase ...	8	4
31.	do Ceiling Decoration in Paper Hanging ...	6	3
33.	Assortment Paper Bags and Sacks ...	6	3
33.	do of Pocket Books, Wallets, &c ...	6	3
34.	do of Writing Inks ...	5	2
35.	do of Black Printing Inks ...	8	4
36.	do of Coloured do ...	8	4
37.	do of Lithographing and Engraving Inks ...	8	4

For Regulations regarding Medals and Diplomas, see page 16 of this Prize List.

SECT.

38. A

39.

40.

41. E

Class

1. A

2. C

3. P

4. C

5. G

6. A

7. L

8. C

9. M

10. F

11. F

12. P

13. L

14. P

15. C

16.

17.

18. A

19.

20. E

1. A

2. A

3. R

4. C

5. P

For Reg

Sect.		1st.	2nd
38.	Assortment of Writing and Copying Ink combined	8	4
39.	do of Metal Stamps	5	2
40.	do of Rubber Stamps	6	3
41.	Extra Entries.		

Class II.—Chemical Manufactures and Pharmaceutical Preparations, Oils, Paints, Varnishes, Artificial Limbs, Philosophical Instruments, &c.

PART 1. Chemical Preparations, &c.

1.	Acids used for manufacturing purposes	10	5
2.	Collection of Chemical Preparations	10	5
3.	Pharmaceutical Preparations and Fluid Extracts	10	5
4.	Chemicals used in Photography	8	4
5.	Glue and Gelatine	6	3
6.	Assortment Cut and Ground Dyewoods	6	3
7.	Linseed Cake	5	2
8.	Collection of Rare Drugs	5	2
9.	Medicinal Herbs, Roots and Plants, native growth	5	3
10.	Fluid Extracts of Medicinal Herbs, collection	6	3
11.	Fruit Essences and Flavoring Extracts	5	2
12.	Plaster of Paris	4	2
13.	Land Plaster	4	2
14.	Pot and Pearl Ashes	5	3
15.	Collection of Perfumery	8	4
16.	do Toilet preparations and materials used in manufacture of same	8	4
17.	do Essential Oils...	5	2
18.	Assortment of Druggists' Glassware	6	3
19.	do of Powdered Drugs and Spices	5	2
20.	Extra Entries.		

PART 2. Oils, Varnishes, Paints, &c.

1.	Assortment Neat's Foot Oil and other Animal Oils	8	4
2.	Assortment Linseed and other Vegetable Oils	8	4
3.	Refined Shale, Rock or Coal Oils	8	4
4.	Crude and Refined Fish Oils	8	4
5.	Petroleum Refined	8	4

For Regulations regarding Medals and Diplomas, see page 16 of this Prize List.

SECT.	1st	2nd
6. Paraffine Oil... ..	8	4
7. Collection Petroleum Products	8	4
8. Varnishes, Oils and Spirits	8	4
9. White Lead, ground in oil and powder, samples	8	4
10. Colours, do do	8	4
11. Assortment of Dye Stuffs	8	4
12. do of Lubricating Oils	8	4
13. Extra Entries.		

PART 3. Philosophical & Surgical Instruments & Appliances.

1. Collection of Splints, Bandages and other Surgical Appliances	15	8
2. Assortment of Artificial Limbs	10	5
3. Assortment of Trusses and Orthopedic appliances ...	8	4
4. Chemical and Electrical Apparatus... ..	8	4
5. Surgical Instruments, collection of	10	5
6. Dental do do	10	5
7. Display of Dental Work	10	5
8. Gymnastic Appliances, consisting of Boxing Gloves, Indian Clubs, Parlor Gymnasium, &c	6	3
9. Invalid Bedstead	5	2
10. Electro Galvanic Batteries	6	2
11. Collection Optical Instruments	8	4
12. Collection of Instruments for veterinary surgery ...	10	5
13. do of Mathematical and Drawing Instruments	8	4
14. do of Engineering and Surveying Instruments	10	5
15. Metereological Apparatus	15	8
16. Set Hydrometers and Saccharometers	8	4
17. Fire Alarm Telegraph	19	6
18. Magnetic Telephone	10	5
19. Acoustic Telephone	8	4
20. Display of Telegraphic Instruments and Supplies	10	5
21. Numismatic Collection	8	4
22. Models of Invention		
23. Extra Entries		



For Regulations regarding Medals and Diplomas, see page 16 of this Prize List.

Class
Col

SECT.

1. Port
2. Hist
2. Lan
- 4.
5. Anir
6. Flow
7. Mar
8. do
9. Inan

1. Port
2. Hist
3. Lan
- 4.
5. Anir
6. Flow
7. Mar
8. Inan

PA

1. Cray
2. do

3. do
4. Free
5. Pen
6. Orig
7. Sepia
8. Extra

For Reg

Class 12.—Fine Arts, Pictures in Oil and Water Colors, Drawings, Sculpture, Statuary, Engraving, Lithography, Penmanship, Materials used in Art, &c.

PART 1.—Oil paintings, by Professional Artists.

SECT.							1st	2nd
1.	Portrait	20	10
2.	Historical Subject	20	10
2.	Landscape (Canadian Subject)	20	20
4.	do (not Canadian)	20	10
5.	Animals from Life	15	8
6.	Flowers or Fruit	15	8
7.	Marine (Canadian subject)	15	8
8.	do (not Canadian)	15	8
9.	Inanimate Objects	15	8

PART 2.—Water Colors, by Professional Artists.

1.	Portrait	15	8
2.	Historical subject	15	8
3.	Landscape (Canadian subject)	15	8
4.	do or Marine (not Canadian)	15	8
5.	Animals from Life	12	6
6.	Flowers or Fruit	10	5
7.	Marine (Canadian subject)	12	6
8.	Inanimate Objects	10	5

PART 3. Drawing in Light & Shade, by Professional Artists.

1.	Crayon or Pencil Portrait	10	5
2.	do Drawing in Black and White, from inanimate objects	10	5
3.	do or Charcoal Sketch	8	4
4.	Freehand Drawing	8	4
5.	Pen and Ink Sketch	8	4
6.	Original design for industrial purposes	15	8
7.	Sepia Drawing	10	5
8.	Extra Entries							

For Regulations regarding Medals and Diplomas, see page 16 of this Prize List.

PART 4.—Oil Paintings, by Amateurs.

SECT.	1st	2nd	3rd
1. Portrait	8	3	2
2. Historical Subject	6	4	2
3. Landscape (Canadian subject)	6	4	0
4. do (not Canadian)	6	4	2
3. Animals, from life	6	4	2
6. Flowers or Fruit	5	4	2
7. Marine Subject	6	4	2
8. Inanimate Objects	4	2	1

PART 5.—Water Colors, by Amateurs.

1. Portrait	6	4	2
2. Historical Subject	6	4	2
3. Landscape (Canadian subject)	5	3	2
4. Animals, from life	6	4	2
5. Flowers or Fruit			
6. Marine Subject	5	3	2
7. Inanimate Objects	4	2	1

PART 6.—Drawings in Light and Shade, by Amateurs.

1. Crayon or Pencil Portrait	3	2	1
2. do Drawing in Black and White from inanimate objects	3	2	1
3. Charcoal Drawing	3	2	0
4. Freehand Drawing	3	2	1
5. Pen and Ink Sketch	3	2	0
6. Original design for Industrial purposes	4	2	1
7. Sepia Drawing	3	2	0
8. Extra Entries			

PART 7.—Educational Department.

(Open to Pupils in Schools of Art and Design, Collegiate Institutes, High and Common Schools. Entrance free.)

SECT.	1st	2nd
1. Freehand Drawing, specimen	2	1
2. From the Flat do	2	1

For Regulations regarding Medals and Diplomas, see page 16 of this Prize List.

SECT.

3. Fro
4. Pa
5. Per
6. Cra
7. Mo
8. Sep
9. Per
10. Wa
11. Me
12. De
13. De
14. De
15. Ext

1. Mo
2. Sta
3. Mo
4. Bus
5. Dra
6.
7.
8. Arc
9.
10. D.
11. Col
12. Col
13.
14. De

15. De
16. d
17. d
18. Pai
19. Ex

For R

SECT.					1st	2nd
3.	From the Cast,	do	2	I
4.	Panel,	do	2	I
5.	Perspective,	do	2	I
6.	Crayon, plain,	do	2	I
7.	Model and Object Drawing,	2	I
8.	Sepia	do	2	I
9.	Pen and Ink,	do	2	I
10.	Water Color,	do	2	I
11.	Mechanical or Architectural Drawing,	2	I
12.	Design for Book Cover, (original)	2	I
13.	Design for Wall Paper (original)	2	I
14.	Design for Industrial Purposes, any other	2	I
15.	Extra Entries.					

PART 8.—Statuary and Mechanical Drawings, &c., &c.

1.	Model in Clay, with Plaster Cast	12	6
2.	Statue or Group in Stone or Terra Cotta	20	10
3.	Modelling in Plaster, (original),	12	6
4.	Bust in Marble	15	8
5.	Drawing of Machinery in Perspective	8	4
6.	do of Engine or Mill Work, Colored	8	4
7.	do for Civil Engineering or Surveying work, colored or uncolored	8	4
8.	Architectural drawings, in perspective view, colored	8	4
9.	do do, any subject,	8	4
10.	Designs and plans of a dwelling for the working classes in cities, giving cost in different materials	10	5
11.	Collection Anatomical models for School purposes	8	4
12.	Collection of School Maps	8	4
13.	do School Appliances	10	5
14.	Designs and plans of a dwelling house, for a farmer, giving cost in different materials.	8	4
15.	Design for wall paper, original	10	5
16.	do for book cover, do	10	5
17.	do for stained glass window	10	5
18.	Painting on Silk or Satin	8	4
19.	Extra Entries.					

For Regulations regarding Medals and Diplomas, see page 16 of this Prize List

PART 9.—Lithography, Engraving, &c.

SRCT		1st	2nd
1.	Specimen of Engraving on Copper or Steel, with proof, other than commercial work	10	6
2.	Specimen of Engraving on Copper or Steel, with proof, commercial work	10	6
3.	Specimen of Engraving on Stone, with proof	8	4
4.	do of Lithographic Printing in one color, from transfer	8	4
5.	do Heraldic Engraving	10	6
6.	do Chromo-Lithography, other than commercial work	8	4
7.	do Artistic Lithography	8	4
8.	do Lithographic Writing	6	2
9.	do Engraving on wood, with proof, Scenery	10	5
10.	do Engraving on wood, portrait or other subject	8	4
11.	do Proof and Block of Poster Engraving on side of wood.	8	4
12.	do Embossing	8	4
13.	do Illuminated Work	10	5
14.	do Artotype	8	4
15.	do Designing	10	6
16.	do Ornamental Penmanship	8	4
17.	do Commercial do	8	4
18.	Collection Monograms, Crests and Ciphers, in plain and part in colors	8	4
19.	Collection Seal Engraving and Lapidary's work	8	4
20.	Specimen Die-Sinking	8	5
21.	Extra Entries.		

PART 10. Photography, &c.

1.	Photographic Portrait, untouched, not less than 7 x 9	10	6
2.	Photographic Portrait, water-color, not less than 7 x 9	10	5
3.	Photographic Portrait in India Ink, not less than 7 x 9	10	5
4.	Carte de Visite and Cabinet Portraits, a collection ...	12	6
5.	Collection Photographic Views	10	5
6.	Photography on Porcelain, colored	8	4
7.	Collection Stereoscopic Views	8	3
8.	Combination Photography	10	5

For Regulations regarding Medals and Diplomas, see page 16 of this Prize List.

SECT

9. ASS
10. Pho
11.
12.
13.
14. Ext

1. Gra
2. Squ
3. Up
4.
5. Me
6. Me
7. Ch
8. Ch
9. Ca
10. Ass
11.
12.
13.
14. Ba
15. Ke
16. Gu
17. Ha
18. Ex

(In
ting M

1. Sev

2.

3

For

Sect.					1st	2nd
9.	Assortment	Brushes, Colors, &c.	5	2
10.	Photographic	Portrait, finished in oil	10	5
11.	do	do do Indian Ink	10	5
12.	do	Group do do	10	5
13.	do	do colored	10	5
14.	Extra Entries.					

Class 13.—Musical Instruments.

1.	Grand Piano	15	10
2.	Square Piano	15	8
3.	Upright Piano	12	6
4.	do	do	Canadian Manufacture...	12	6
5.	Melodeon, with one set of reeds	10	5
6.	Melodeon, any other kind	8	4
7.	Church Organ, with pipes	20	10
8.	Church Organ, with reeds	15	8
9.	Cabinet Organ, with reeds	10	5
10.	Assortment of Brass Instruments	10	5
11.	do	of Stringed Instruments	8	4
12.	do	of Reed Instruments	6	3
13.	do	of Fifes, Flutes and Clarionets	6	3
14.	Bass Drum	6	3
15.	Kettle Drum	6	3
16.	Guitar	6	3
17.	Harp	6	3
18.	Extra Entries.						

Class 14.—Sewing and Knitting Machines.

(In this Class no prizes are offered for Sewing or Knitting Machines.)

1.	Sewing Machine for manufacturing
2.	do for family use
3.	do for leather work

For regulations regarding Medals and Diplomas, see page 16 of this Prize List.

Sect.					1st	2nd
4.	do	for embroidery		
5.	do	for button holes		
6.	do	for single thread		
7.	do	for wax thread		
8.	do	for soleing boots and shoes		
9.	Knitting Machine	for family use		
10.	do	for manufacturing		
11.	Spinning Machine		
12.	Series of samples	of work done by family sewing machine	5	3
13.	Series of samples	of work done by manufacturing sewing machine	5	3
14.	Series of samples	of work done by leather work sewing machine	5	3
15.	Series of samples	of work done by embroidery sewing machine	5	3
16.	Series of samples	of work done by button hole sewing machine	5	3
17.	Series of samples	of work done by single thread sewing machine	5	3
18.	Series of samples	of work done by wax thread sewing machine	5	3
19.	Series of samples	of work done by machine for soleing boots and shoes	5	3
20.	Series of samples	of work done by family knitting machine	5	3
21.	Series of Samples	of work done by manufacturing knit-machine	5	3
22.	Extra Entries.					

Class 15—Canadian Economic Geology. Natural History, etc.

PART. 1 Natural History and Botany.

1.	Collection of Birds, stuffed and labelled, with English and scientific names	10	5
2.	Collection of stuffed animals, with English and scientific names, and locality where obtained	20	10

For regulations regarding Medals and Diplomas, see page 16 of this Prize List.

Sect.

3. Coll

4. Coll

5. Coll

5. Coll

7. App

8. Coll

9. Coll

10. Coll

11. New

12. Coll

13. Coll

14. Coll

15. Extr

16. Coll

17. Coll

18. Pig I

19. Wrou

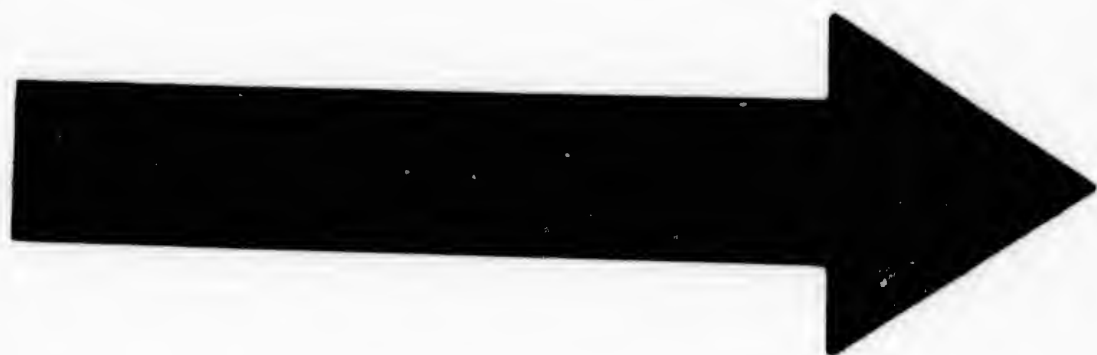
For Reg

Sect.	1st	2nd
3. Collection of native or Foreign Insects, with common and scientific names attached	10	5
4. Collection of Insects, native, injurious and beneficial to cultivated crops—scientific names attached, and injurious or beneficial habits indicated	15	8
5. Collection of native Fishes, stuffed or otherwise preserved, with scientific names attached	10	5
5. Collection of Living Fishes	15	8
7. Apparatus for artificial fish-breeding	12	6
8. Collection of native land and fresh water Shells, with scientific names attached	10	5
9. Collection of Reptiles, stuffed or otherwise preserved, with scientific names attached	15	8
10. Collection of native Mammals, stuffed, with scientific names attached	12	6
11. New Method or substance for the preservation of objects of Natural History, with illustrations of its application	10	5
12. Collection of Plants or Vegetable substances of economic importance, such as for the manufacture of paper, medicinal or chemical extracts, &c., with statement of locality, abundance &c., with English and scientific names	10	5
13. Collection of Native Ferns and Lycopods, with scientific names attached	10	5
14. Collection of native Mosses, Liverworts, Lichens, Algæ and Fungi, with scientific names attached	10	5
15. Extra Entries.		

PART 2—Mineralogy, Coal, Phosphates, etc.

16. Collection of Canadian Fossils, named and classified	10	5
17. Collection of specimens of Iron Ore	10	5
18. Pig Iron manufactured in Canada from Canadian ore	10	5
19. Wrought Iron, manufactured in Canada from Canadian Ore	10	5

For Regulations regarding Medals and Diplomas, see page 16 of this Prize List.



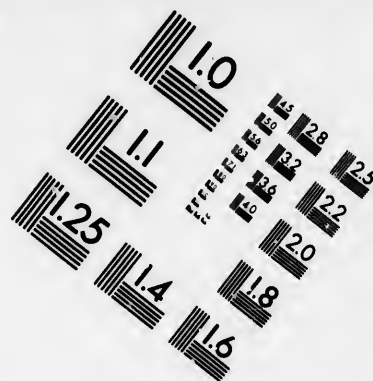
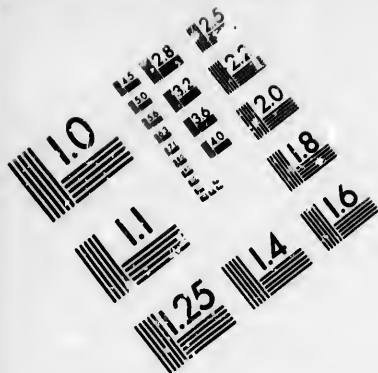
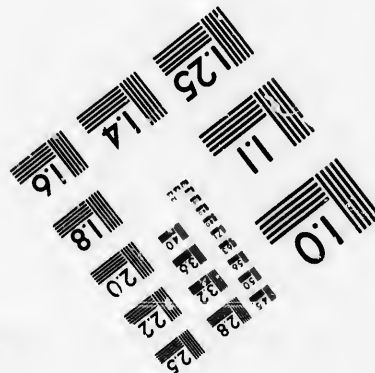
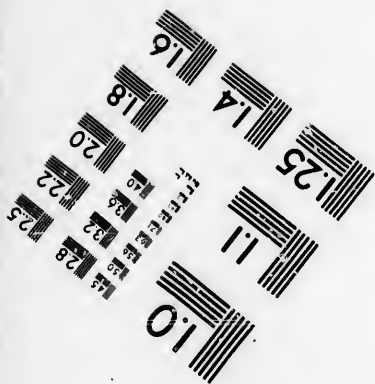
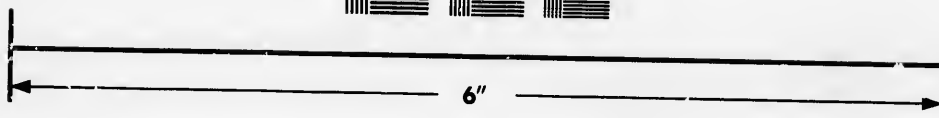
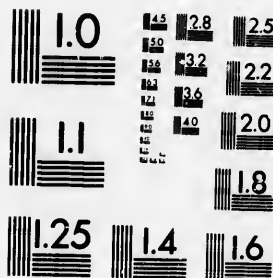


IMAGE EVALUATION TEST TARGET (MT-3)



Photographic
Sciences
Corporation

23 WEST MAIN STREET
WEBSTER, N.Y. 14580
(716) 872-4003



SRCT.		1st	2nd
20.	Steel, Ingot and Bar, manufactured in Canada from Canadian Ore	12	6
21.	Specimens of Minerals or Ores which may be usefully worked, with statement of their nature and locality	8	4
22.	Copper Ores	8	4
23.	Gold and Silver Ores	8	4
24.	Lead Ores	8	4
25.	Lead in Ingots, Smelted in Canada from Canadian Ore	8	4
26.	Specimens of Grate and Stove Coal, mined in the Dominion, with analysis	10	5
27.	Specimens Steam Coal, mined in the Dominion, with analysis	10	5
28.	Specimen Gas Coal or Shale, with certified product of Gas, and specimens of Coke or other products	10	5
29.	Native Canadian Ochres	8	4
30.	Calcined and ground Canadian Ochres	8	4
31.	Native Gypsum	8	4
32.	Gypsum, prepared for market	5	4
33.	Display of Canadian Mineral Phosphates ... Diploma &	10	5
34.	Superphosphate of Lime, made from Canadian rock ...	10	5
35.	Graphite, Crude and Refined	8	4
36.	Specimens of Prepared Peat	8	4
37.	do Sandstone for glass making	8	4
38.	do Plumbago, manufactured	10	5
39.	Collection of Plumbago Stock, prepared for the various purposes for which it is used by manufacturers	15	10
40.	Specimen of Moulding Sand	5	2
41.	Prepared Lithographic Stone, Canadian	8	4
42.	Collection of uncut Mica	6	3
43.	Specimens of Flagstone	8	4
44.	Mineral Water, sulphur	5	2
45.	Mineral Water, saline	5	2
46.	Collection of Mineral and Geological specimens. properly classified and described	15	10
47.	Extra Entries.		

For Regulations regarding Medals and Diplomas, see page 16 of this Prize List.

Class 16.—Groceries, Canned Meats and Fruits, Soaps, Crackers, Starch, Tobacco, &c.

PART 1.—Groceries and Provisions.

SECT.		1st	2nd
1.	Pot and Pearl Barley, 25 lbs each	6	3
2.	Assortment Bottled Pickles, Sauces and Catsups manu- factured for sale	8	5
2,	do Canned Vegetables	8	4
4.	Assortment Canned Meats, consisting of tongues, corn- ed beef, roast and boiled, ham and mutton, Diploma and	10	5
5.	do Potted Meats, Sausages, Poultry, Game, &c., in tins	10	4
6.	do Canned Fish	8	4
7.	do Preserved Jams, in 1 lb. Pots	6	3
8.	do do Jellies,	6	3
10.	Assortment of Pickled Fruits	4	2
11.	do Canned Fruits, 2 lb. tins, ½ doz. each ...	4	2
12.	do Crystallized Fruits	4	2
13.	ds Bottled Fruits, for Pies	4	2
14.	Samples of Candied Citron, Lemon and Orange Peels, &c.	4	2
15.	Soups, in tins	4	2
16.	Samples of Fluid Beef and other Extracts of Meat ...	4	2
17.	do of Preserved Potatoes	4	2
18.	do of Cooked Meats, in skin	4	2
10.	do of Pickles, in 5-gallon kegs	4	3
20.	do of Horse-Radish, prepared in bottles ...	4	2
21.	do of Minced Meat and Plum Pudding		
22.	do of Dried Herbs, in bottles or tins	4	2
23.	do of Stove Polish	4	2
24.	do of Apple Butter and Apple Sauce	4	2
25.	do of Rye Flour, 21 lbs. ... Diploma and ...	4	2
26.	do of Graham, 25 lbs. ... do	4	2
27.	do of Buckwheat Flour, 25 lbs. do	5	2
28.	do of Pastry do do ... do	5	2

For Regulations regarding Medals and Diplomas, see page 16 of this Prize List.

SECT						1st	2nd
29.	Samples of Self raising	do	do	...	do	...	5 2
30.	do	of Oat Meal	do	do	...	do	5 2
31.	do	of Corn Meal	do	do	...	do	5 2
32.	do	of Granulated Wheat			...		4 2
33.	do	of Caraway Seeds, Canadian growth			...		4 2
34.	Display of Mustard,		4 2
35.	do	Ground Spices	4 2
36.	Assortment of Cocoas and Chocolates	4 2
37.	Samples of Baking Powder, Diploma				
38.	do	of Boiled Sugar Confectionary	4 2
39.	do	of fancy	do	8 2
40.	Samples of Dairy Pickling and Table Salt	5 3
41.	do	of Boot and Shoe Blacking	5 3
42.	do	of Canadian Vinegar	8 4
44.	do	of Dried or smoked Fish, in Kits or Boxes					5 3
45.	do	of Pickled Fish	5 3
46.	do	of Dried Fruits	4 2
47.	do	of Dried Vegetables	4 2
48.	do	of Washing Crystal or Powder	5 2
48.	Samples of White and Yellow Sugars	10	5
49.	do	of Beet Root Sugars	6	5
49.	do	of Maple Sugar	5	3
51.	Maple Syrup	5	3
52.	Amber Golden Sprup	5	3
53.	Assortment of Starch, for Laundry and cooking purposes					5	3
54.	do	of Macaroni and Vermicelli	5	3
55.	do	of Hams and Bacon, smoked and unsmoked				5	3
56.	do	of Rich Fancy Biscuits and Crackers	6	3
57.	do	of Plain	do	do	...	5	2
58.	do	of Ship	do	do	...	5	2
59.	Assortment Distilled Liquors	6	4
60.	do	Methylated Spirits	6	3
61.	do	Ales and Porter	5	2
62.	do	Ginger Ale and Aerated Waters	6	3
63.	Display of Refined Sparkling Cider	5	2
64.	do	of Fruit Syrups	6	3
65.	Assortment of Soaps, for Laundry purposes		6	3
66.	do	of Fancy and Toilet Soap	6	3

For Regulations regarding Medals and Diplomas, see page 16 of this Prize List.

SECT.					1st.	2nd.
67.	Assortment of Candles	6	3
68.	Extra Entries.					

PART 2.—Tobacco, Cigars, Smoker's Materials, &c.

68.	Bright Plug Tobacco	10	5
69.	Black Plug do	6	3
70.	Cut Smoking do	8	4
71.	Cut Chewing do	5	2
72.	Snuff do	4	3
73.	Display of styles and qualities of Smoking Tobacco				10	5
74.	do do do Chewing do	...			8	4
75.	Assortment of Foreign Cigars	10	5
76.	do Domestic Cigars	6	3
77.	do Cigarettes	6	3
78.	do Clay Pipes	5	2
79.	do Briar Root Pipes	6	3
80.	do Meerschaum Pipes	6	3
81.	do Smoker's Materials	6	3
82.	Tobacco Cutter	8	4
83.	Assortment Friction Matches	8	4
84.	do Fancy do	8	4
85.	Extra Entries.					

Class 17.—Woollen, Flax and Cotton Goods, Furs, Wearing Apparel, &c.

PART 1.—Woollen Goods.

1. Assortment Fine Wool Canadian Fancy Tweed,
6 pcs., summer and winter ... 1st, Gold M.; 2nd Sil. M.
2. Assortment Fine Wool Canadian Plain Tweed,
6 pcs., summer and winter ... 1st, Sil. M.; 2nd Dip.
3. Assortment Medium Wool Canadian Fancy
Tweed, 6 pieces, summer and win-
ter ... 1st, Sil. M.; 2nd Bronze M.
4. Assortment Medium Wool Canadian Plain
Tweed, 6 pieces, summer and win-
ter ... 1st, Bronze M.; 2nd, Dip.
5. Assortment Canadian Wool Plain Tweed, 6 pcs.,

For Regulations regarding Medals and Diplomas, see page 16 of this Prize List.

S^{ECT.}

	summer and winter	...	1st, Sil. M.; 2nd, Bronze M.		
6.	Assortment Canadian Wool Plain Tweed, 6 pcs.,				
	summer and winter	...	1st, Bronze M.; 2nd, Dip.		
*7.	Best general display of Canadian Woollen Manufac-				
	tures	...	1st, Gold M.; 2nd, Silver M.; 3rd, Dip.		
8.	do Etoffe du Pays, plain, 6 pcs	7	3
9.	do do checks, 6 pcs	6	3
10.	Druggets, plain and fancy check, Union, 6 pcs	5	2
11.	do do do Wool, 6 pcs.	5	2
12.	Assortment Pilots and Beavers, 12 pcs...	8	4
13.	Coatings, 6-4 wool, plain or fancy, 12 pcs	6	3
14.	Serges, black and blue, 3-4 or 6-4	6	3
15.	Assortment Winceys, 3 pieces each	5	2
16.	do Worsted Cloths, 3-4 or 6-4,	6	3
17.	do Waterproof Tweeds, 6 pieces	8	4
18.	Fancy dress goods, 3 pieces	5	2
19.	Flannels, fine wool, grey, 6 pieces	6	3
20.	do white and colored, 8 pieces	6	3
21.	do fancy, not less than 16 pieces	8	4
22.	do Canada wool, grey, 6 pieces	6	5
23.	Assortment Flannels, Union, white and colored	10	5
24.	do do Cricket, 3 pieces	6	4
25.	White Saxony Blankets, 4 pairs	5	2
26.	White Medium Blankets, 4 pairs	5	2
27.	White Union Blankets, 4 pairs	6	3
28.	White and Colored Mackinaw Blankets	6	3
29.	Blankets for Lumbermen's use	5	2
30.	Horse Blankets, plain and fancy	5	2
31.	Horse Blankets, shaped, 2 pairs	5	2
32.	Assortment Yarn, white and colored, made from Cana-				
	ian wool, 3 ply spindles, 6 lbs each...	8	4
33.	do Yarn, white and colored, made from				
	Foreign wool, 4 ply spindles, 6 lbs each	8	4
34.	do Fleecy Yarn, white and colored, 2 spindles,				
	3 lbs	5	2
35.	do Fingering Yarn, 4 ply, white, dyed and				
	mixtures	5	2
36.	Assortment Combed Yarn, 4 ply, white, dyed and				
	mixtures	5	2

*Section 7 open to Manufacturers only.

For Regulations regarding Medals and Diplomas, see page 16 of this Prize List.

SECT.		1st	2nd
37.	Assortment Cardigan Jackets	8	4
38.	do Shirts and Drawers for men, $\frac{1}{2}$ doz. each	6	3
39.	do Shirts and Drawers, for ladies, $\frac{1}{2}$ doz. each	6	3
40.	do Shirts and Drawers, for children, $\frac{1}{2}$ doz. each	5	2
41.	do Men's and Boy's Half Hose, $\frac{1}{2}$ doz. each	5	2
42.	do Ladies' and Misses' Hose, plain, ribbed and fancy, $\frac{1}{2}$ doz. each	6	3
43.	do Socks and Stockings	6	4
44.	do Gloves, Mitts and Gaiters, $\frac{1}{2}$ doz. each ...	8	4
45.	do Nubias, Scarfs and Shawls, $\frac{1}{2}$ doz. each ...	6	3
46.	Extra Entries.		

PART 2.—Cotton Goods.

(By request of the Manufacturers no money prizes are offered in this Class.)

1. Sale Yarn, unbleached, 1 bundle each, 7, 8, 9, 10.
2. do colors, best assortment, in 20 lbs., No. 9.
3. Carpet Warp, colors, best assortment in 40 lbs. ...
4. Knitting Cotton, do do 20 lbs. ...
5. Beam Warps do do
6. Bags, best 16 oz., 3 ply both ways, 2 bushel
7. do any weight
8. Unbleached Plain Sheetings, 60 to 84 inch, best range 6 pieces
9. Unbleached Twills, 60 to 84 inch, best range, 6 pieces.
10. Unbleached Plain Sheetings, best assortment, 6 pieces.
11. Unbleached Twilled Sheetings, best assortment, 6 pieces
12. Canton Flannels, unbleached and bleached, best range, 10 pieces
13. Bleached Shirtings, best range, 15 pieces
14. Tickings, best range, 6 pieces
15. Apron Checks, best range, 12 pieces
16. Shirtings, fancy wove, best range, 12 pieces
17. Ducks, fancy wove, best range, 12 pieces
18. Ducks, plain brown, 7 oz., 12 pieces

For Regulations regarding Medals and Diplomas, see page 16 of this Prize List.

SECT.	1st	2nd
19. Denims, plain and fancy, best range		
*20. Best General Display of Cotton Manufactures. 1st Prize, Silver Medal; 2nd, Bronze; 3rd, Diploma		
21. Extra Entries.		

PART 3—Carpets, Mats and Oilcloths.

1. Fancy Carpets, wool, Canadian manufacture	10	5
2. Carpets, 2 ply, wool, 40 yards, 3 pieces	8	4
3. Carpets, Union, 40 yards, 3 pieces	8	4
4. Assortment Stair Carpets, 3 pieces	8	4
5. Parlor Rugs, raised wool work	6	3
6. Carriage Rugs, raised wool work	6	3
7. Hearth Rugs, wool	6	3
8. Assortment Door Mats, wool,	8	4
9. Specimen Rubber or composition carpet	6	3
20. Specimen Floor Matting	6	3
11. Cocoa Matting, 3 pieces, 40 yards	5	2
12. Assortment Oil Cloths	10	5
13. do Oil Cloth Mats	8	4
14. dp Furniture Oil Cloth	6	3
15. Extra Entries		

PART 4.—Wearing Apparel.

1. Assortment Collars and Cuffs	10	5
2. Assortment Gents' Kid Gloves	5	2
3. Assortment Ladies' Kid Gloves	5	3
4. Assortment Cloth Caps	4	2
5. Assortment Woollen Gloves and Mitts	5	3
6. Assortment Silk Ties and Scarfs	6	3
7. Assortment Suspenders	5	2
8. Overcoat of Canadian Cloth	8	4
9. Gentleman's Suit of Canadian Cloth	8	4
10. Boys' Suit do do	5	3
11. Assortment Gents White Dress Shirts	5	3

*Section 20 open to Merchants or Manufacturers.

For Regulations regarding Medals and Diplomas, see page 16 of this Prize List.

PRIZE LIST.

97

SECT	1st	2nd
12. Assortment Gents Fancy Flannel Shirts	5	3
13. Assortment Gents Tweed Shirts	4	2
14. Assortment Ladies Jackets	5	3
15. Assortment Ladies Mantles	5	3
16. Trimmed Lady's Hat	8	4
17. do Bonnet	8	4
18. Collection Ladies Bonnets and Hats	8	4
19. Collection Ladies and Infants Underclothing	8	4
20. Assortment re-dyed goods, garment work	8	4
21. Assortment re-dyed goods, merchant's work or piece goods	6	3
22. Assortment Sewing Silk and Twists	8	4
23. Assortment Silk and Satin Ribbons	6	3
24. Piece of Silk, Canadian, manufactured on the grounds		
25. Extra Entries	Gold M. Dip.	

PART 5.—Furs, Hats, Caps, &c.

1. Set Ladies Furs in Seal Skin, consisting of Sacque, Muff and cap	10	5
2. do do Persian Lamb, consisting of Sacque, Muff and Cap	10	5
3. do do Seal Skin, consisting of Dolman, Muff and Head Dress	10	5
4. Ladies Dolman, lined and trimmed with fur	8	4
5. do Circular, lined and trimmed with fur	8	4
6. Assortment Gents Caps and Gauntlets	8	4
7. Gentleman's Seal Coat	10	5
8. Gentleman's Cloth Coat, lined and trimmed with fur	8	4
9. Gentleman's Lamb Skin Coat	8	4
10. Assortment Sleigh Robes, not less than three kinds	10	5
11. do Fancy Sleigh Robes and Mats	8	4
12. Collection of manufactured Furs	Gold M.	Bronze M.
13. Assortment and workmanship of Silk Hats	8	4
14. do Pull-over Hats	6	3
15. do Buckskin Gloves	5	2
16. do Soft Wool Hats	5	2
17. Assortment Military Caps	6	3

For Regulations regarding Medals and Diplomas, see page 16 of this Prize List

SECT.	1st	2nd
18. Assortment do Helmets	6	3
19. Military Head Dress, original, specially adapted to Canada. ... 1st Silver Medal; 2nd \$10.		
20. Display of Military Outfittings	8	4
21. Collection of Moose Hair Fancy Work	6	3
22. Extra Entries.		

PART 6—Rope, Cordage, Fishing Tackle, etc.

1. Silk Salmon and Trout Lines	5	2
2 Salmon, Trout and Trolling Rods	8	4
3. Artificial Flies	5	2
4 Artificial Bait, other than flies	5	2
5. Assortment Upholsterer's Twine manufactured from Canadian Flax	6	3
6. Assortment Fish Lines, manufactured from Canadian flax	6	3
7. Assortment Fine Cord, manufactured from Canadian flax	6	3
8. Assortment Fine Cord, manufactured from Japanese hemp	6	3
9. Tapered Plough Lines, manufactured from Russian hemp	6	3
10. Sash Cord manufactured from Russian hemp ...	6	3
12. Manilla Clothes Lines	4	2
13. Tapered Plough Lines, made from Manilla hemp	4	2
14. Coil Sash Cord, made from Manilla Hemp ...	4	2
15. Coil three-quarter inch rope	4	2
16. Clothes Lines, manufactured from East India Jute ...	4	2
17. Sash Cord, manufactured from Jute hemp ...	4	2
18. Coil five-eighth inch Rope, manufactured from jute hemp	4	2
19. Assortment of Manilla Rope	6	3
20. do Hemp Rope	6	3
21. do Jute Rope	6	3
22. do Twines	8	4
23. Extra Entries		

For Regulations regarding Medals and Diplomas, see page 16 of this Prize List.

Class 18.—Ladies Department.**PART 1. Articles of Ladies Dress.**

Sect.	1st	2nd
1. Display of Millinery Goods	8	4
2. do Straw Hats	5	2
3. Lady's Walking Dress	5	2
4. Evening Dress	8	4
5. Skirt	4	2
6. Suit of Under Garments	5	2
7. Cloak	6	3
8. Waterproof	5	2
9. Misses Suit	6	4
10. Child's Suit	4	2
11. Infant's Suit	4	2
12. Ostrich Feathers, collection of	5	3
13. Fancy Feathers, collection of	5	3
14. Best display of Ladies Dress Goods	8	4
15. Assortment of Corsets	10	5
16. Extra Entries.		

PART 2. Plain, Needle and Machine Work.

1. Specimen of Plain Needle Work	5	2
2. Fine Shirt, all by hand	8	4
3. Silk Patchwork Quilt, all by hand	8	4
4. Calico do do do	5	2
5. Worsted do do do	5	2
6. Velvet do do do	6	3
7. Plain White Muslin Quilt, by hand	4	2
8. do Quilt of any other kind, by hand	5	2
9. Gent's Dressing Gown	5	2
10. Fancy Pillow Covers	6	2
11. Best set of Pillow Chairs	6	3
12. Sample of Braiding by hand... ..	4	2
13. Best Sample of Patched Garment	4	2
14. Plain Sewing by Machine	5	3
15. Fine Shirt, by do	5	3

For Regulations regarding Medals and Diplomas, see page 16 of this Prize List.

SECT.	1st	2nd
16. Sample of Ornamental Work by Machine	6	3
17. Best Quilt made and quilted by machine	6	3
18. Sample of Braiding by Machine	5	2
19. Extra Entries.		

PART 3. Embroidery and Ornamental Needle Work.

1. Best and largest collection of ornamental Needle Work on Embroidery, done by one person	8	4
2. Specimen of Embroidery on Infant's Dress or Skirt, in cotton or linen	4	2
3. do of Embroidered Pillow Cases in cotton or linen	4	2
4. do of Embroidery Night Dress, in cotton or linen	4	2
5. do of Embroidered Infant's Blanket	3	2
6. do of do Handkerchief in cotton or linen	3	2
7. do of do Letters in marking do	3	2
8. Set of Embroidered Table Mats in cotton		
9. Specimen of Embroidered Infant's Dress in silk	4	2
10. do do Ottoman or Chair Cover in silk	4	1
11. do do Piano or Table Cover in silk	5	2
12. do do Dressing Gown in silk	4	2
13. do do Lady's Dress or Mantle, in silk	5	3
14. do of Mosaic Work	4	2
15. do of Chenille Embroidery	4	2
16. Samples of Cut or Raised Work, in Worsted	4	2
17. do of Splashing in Worsted	4	2
18. do pair of Lamp Mats in Worsted	4	2
19. Combined Fire Screen in Worsted	4	2
20. Chair or Ottoman Cover in Worsted	4	2
21. Pair of Slippers in Worsted	3	2
22. Embroidered Sofa Pillow in Worsted	4	2
23. Sample Towel Rack	3	2

For Regulations regarding Medals and Diplomas, see page 16 of this Prize List.

SRCT.					1st	2nd
24.	Specimen sample Foot Rest	4	2
25.	do Honiton Lace Work...	4	2
26.	do Ornamental Straw Work	3	2
27.	Applique Embroidery	4	2
28.	Cretonne do	3	2
29.	Russia do	3	2
30.	Graphic do	3	2
31.	Crewel do	3	2
32.	Sample of Embroidered Bracket	3	2
33.	Sample of Embroidered Wall Pocket	3	2
34.	Toilet Sett, including Mat Cushion and Cover	3	2
35.	Embroidered Sofa Pillow, in silk	4	2
36.	Applique Sofa Pillow	4	2
37.	Extra Entries.					

PART 4—Crochet, Knit and Fancy Work.

1.	Largest and best collection of work in this part, made by one person				8	4
2.	Gent's Scarf	3	2
3.	Boy's Scarf	3	2
4.	Afghan Robes	4	2
5.	Child's Afghan Robes	3	2
6.	Cotton Tidy	3	3
7.	Worsted Tidy	3	2
8.	Pair Crochet Toilet Mats	3	3
9.	do Lamp Mats	3	2
10.	Crochet or Knit Hood	3	2
11.	do Bedspread	3	2
12.	do Shawl	4	2
13.	do Flag	3	2
14.	do Lady's Sack...	4	2
15.	do Infant's Boots	3	2
16.	do Infant's Shirts	3	2
17.	do Leggings	3	2
18.	po Fancy Mittens	2	1
19.	do Child's Cap	3	1
20.	do Cloak	3	2

For Regulations regarding Medals and Diplomas, see page 16 of this Prize List.

Sect.					1st	2nd
21.	Fancy Pin Cushion	3	2
22.	Fancy Purse	3	2
23.	Extra Entries.					

PART 5—Hair, Bead, Shell, and Wax Work.

1.	Largest display of Hair Work	5	2
2.	Bead work, by Indians only	8	4
3.	do other than by Indians...	5	2
4.	Braiding in Silk, Wool or Cotton	5	2
5.	Braiding in Gold or Silver	4	2
6.	Display of Wax Flowers	6	2
7.	do Shells	3	2
8.	do Fruit	4	2
9.	Display of Wax Work, other than Flowers, Shells and Fruit	6	3
10.	Straw and Hay Work	4	2
11.	Cone Work	4	2
12.	Artificial Flowers in Worsted	5	2
13.	do in Feathers	5	2
14.	do in Paper	4	2
15.	do in Cambric	4	2
16.	do in Silk or Silver Wire	4	2
17.	Hair Jewellery...	5	3
18.	Hair Flowers	4	2
19.	Leather Flowers	5	2
20.	Moss Flowers	4	2
21.	Shell Flowers	4	2
22.	Seed Flowers	4	2
23.	Decalcomanie Flowers	4	2
24.	Diaphanie Flowers	3	2
25.	Artificial Wreaths	3	2
26.	Bouquets of Dried Grasses and Plants	3	2
27.	Feather Dusters	3	2
28.	Feather Fans	3	2
29.	Collection of Sea Weed	4	2
30.	Society Regalia	8	4
31.	Collection of Buttons	4	2

For Regulations regarding Medals and Diplomas, see page 16 of this Prize List

2nd	Sect.	1st	2nd
2	32. Dressed Doll	3	2
2	33. Dressed Baby Cot	3	2
	34. Extra Entries.		

Class 19.—Domestic Manufactures.

2	1. Two pairs of Woollen Stockings	3	2
4	2. do do Socks	3	2
2	2. Three do Gloves	3	2
2	4. Four do Mittens	3	2
2	5. Two lbs. Stocking Yarn	3	2
2	6. Pair of Woollen Blankets	4	2
2	7. 12 yards of Woollen Cloth	4	2
2	8. Piece Etoffs du Pays	4	2
3	9. Piece Woollen Flannel	4	2
2	10. Piece Woollen Carpet	3	2
2	11. Hearth Rug	3	2
2	12. Piece Rag Carpet (Catalonne)	3	2
2	13. Rag Mat	3	2
2	14. Woollen Coverlet	3	2
2	15. Piece Check for Cloaking, 6 yards	3	2
2	16. Counterpane	3	2
3	17. Piece Diaper, 12 yards	3	2
2	18. Piece Linen, 12 yards	3	2
2	19. Linen Thread, half pound	3	2
2	20. Home Made Bread	3	2
2	21. do Biscuit	3	2
2	22. do Wine	3	2
2	23. do Vinegar	3	2
2	24. do Syrup	3	2
2	25. do Liquors	3	2
2	26. Extra Entries.		



For Regulations regarding Medals and Diplomas, see page 16 of this Prize List.

INDEX.

AGRICULTURAL DEPARTMENT.

HORSES.

Thorough Bred Horses.....	23
Clydesdales, Pure-Bred.....	23
Percherons.....	24
Suffolks.....	24
Roadsters, for Driving.....	24
Carriage Horses.....	24
Heavy Draught Horses.....	25
Draught Horses.....	25
Hunters and Saddle Horses.....	25
Shetland Ponies.....	26
Cobs and Ponies.....	26
Donkeys.....	26

CATTLE.

Shorthorns	27
Herefords	27
Devons.....	28
Ayrshires.....	28
Polled Angus, Aberdeens.....	28
Jerseys or Alderneys.....	29
Grade Cattle.....	29
Fat, and Working Cattle.....	29

SHEEP.

Leicesters	30
Cotswolds.....	31
Other Long Woolled Sheep.....	31
Southdowns.....	31
Shropshire, Hampshire, and Oxfordshire Downs.....	31
Fat Sheep of any Breed.....	31

PIGS.

Berkshires.....	32
Suffolks.....	32
Essex.....	33
Poland China.....	33
Yorkshire, and other Large Breeds.....	33

POULTRY.

Poultry.....	34
--------------	----

AGRICULTURAL IMPLEMENTS.

Agricultural Implements.....	37
do do	38
do Tools.....	39

AGRICULTURAL PRODUCTIONS.

Seeds and Grains.....	40
Roots and Field Crops	41
Dairy Products.....	42
Honey	44

HORTICULTURAL DEPARTMENT.

Fruit—Professional Nurserymen.....	47
Fruit—General List, Apples and Pears.....	48
Fruit—Plums, Peaches, Grapes, &c.....	51
Collection of Fruits.....	53
Garden Vegetables.....	53
Domestic Wines.....	55

INDUSTRIAL DEPARTMENT.

CLASS 1—Cabinet Ware and Upholstery.....	56
CLASS 2—House Furnishings, Brushes, Brooms, Washing Machines, &c.....	57
CLASS 3—Boats, Diving Apparatus, Life Preservers, Fire Escapes, &c..	58
CLASS 4—Carriages, Sleighs and parts thereof.....	59
CLASS 5— <i>Building Materials, Painting, Marble Work, Bricks, Floor Tiles, Slates, &c.</i>	
PART 1—Bricks, Tiles, Plaster, Stone, and Marble Work.....	60
" 2—Woodwork for Building Purposes.....	61
" 3—Painting and Glass Work, for building and other purposes.....	62
" 4—Plumbers' Work, Brass Work, Iron Founders' Work, other Metal Work for Building.....	62
CLASS 6— <i>Engines, Machinery and Railway Appliances.</i>	
PART 1—Steam Engines.....	64
" 2—Steam and Hand Pumps, Water Wheels, &c.....	64
" 3—Metal working Machinery, Machinist's Work, Tools, &c.....	66
" 4—Mill and Factory Machinery.....	66
" 5—Machines for Flour Mills.....	67
" 6—Lumbermen's Tools.....	68
" 7—Wood Working Machinery.....	68
" 8—Railway Appliances.....	69
CLASS 7— <i>Mechanical and Metal Work, including Stoves, Castings, Hard- ware, Fire Arms, Safes, Gas Fixtures, Jewellery, &c.</i>	
PART 1—Stoves, Furnaces, Grates, Castings, Hollow Ware, &c....	70
" 2—Castings, Iron Fencing, &c.....	71
" 3—Mechanic's Tools, Horse Shoes, &c.....	72
" 4—Fire Arms, Safes, Cutlery, Scales, Hardware, Bells &c.	72
" 5—Metal and Wire Work, Gas and Lamp Fixtures, Lead Pipe, &c.....	73
" 6—Electro and Nickle Plating, Gold and Silver Smith's Work, Jewellery, &c.....	74
CLASS 8— <i>Earthenware, Glass, Pottery, &c.</i>	
PART 1—Earthenware, Pottery and Clay Work, &c.....	74
" 2—Glassware, &c.....	75
CLASS 9— <i>Leather, Saddlery, Hose, Trunk Makers' Work, Boots, Shoes, &c</i>	
PART 1—Leather, Saddle and Harness Stock.....	76

PART 2—Saddlery, Harness, &c.....	77
“ 3—Rubber, Hose and Trunk Makers' work, &c.....	78
“ 4—Boot and Shoemakers' Work, Tools, &c.....	78
CLASS 10—Paper, Printing, Bookbinding, Manufactures of Paper, Ink, &c.....	79
CLASS 11— <i>Chemical Manufactures and Pharmaceutical Preparations, Oils, Paints, Varnishes, Artificial Limbs, Philosophical Instruments, &c.</i>	
PART 1—Chemical Preparations.....	81
“ 2—Oils, Varnishes, Paints, &c.....	81
“ 3—Philosophical and Surgical Instruments and Appliances	82
CLASS 12— <i>Fine Arts, Pictures in Oil and Water Colours, Drawings, Sculpture, Statuary, Engraving, Lithography, Penman- ship, Materials used in Art, &c.</i>	
PART 1—Oil Paintings by Professional Artists.....	83
“ 2—Water Colours by “.....	83
“ 3—Drawing in Light and Shade by Professional Artists... ..	83
“ 4—Oil Paintings, by Amateurs.....	84
“ 5—Water Colours by do.....	84
“ 6—Drawing in Light and Shade, by Amateurs.....	84
“ 7—Educational Department.....	84
“ 8—Statuary and Mechanical Drawing.....	85
“ 9—Lithography, Engraving, &c.....	86
“ 10—Photography.....	86
CLASS 13— <i>Musical Instruments</i>	87
CLASS 14— <i>Sewing and Knitting Machines, &c.</i>	87
CLASS 15— <i>Canadian Economic Geology, Natural History &c.</i>	
Part 1—Natural History and Botany.....	88
“ 2—Mineralogy, Coal, Phosphates &c.....	89
CLASS 16— <i>Groceries, Canned Meats and Fruits, Soaps, Crackers, Starch, Tobacco &c.</i>	
PART 1—Groceries and Provisions.....	91
“ 2—Tobacco, Cigars, &c.....	93
CLASS 17— <i>Woollen, Flax and Cotton Goods, Furs, Wearing Apparel &c.</i>	
PART 1—Woollen Goods.....	93
“ 2—Cotton do.....	95
“ 3—Carpets, Mats and Oil Cloths.....	96
“ 4—Wearing Apparel, &c.....	96
“ 5—Furs, Hats, Caps, &c.....	97
“ 6—Rope, Twines, Cordage, &c.....	98
CLASS 18— <i>Ladies' Department</i>	
PART 1—Articles of Ladies' Dress.....	99
2—Plain, Needle and Machine Work.....	99
“ 3—Embroidery and Ornamental Needle Work.....	100
“ 4—Crochet, Knit and Fancy Work.....	101
“ 5—Hair, Bead, Shell and Wax Work.....	102
CLASS 19— <i>Domestic Manufactures</i>	103



77
78
78

79

81
81
82

83
83
83
84
84
84
84
85
86
86
87
87

88
89

91
93

93
95
96
96
97
98

99
99
100
101
102
103

