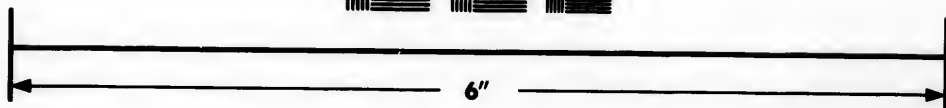
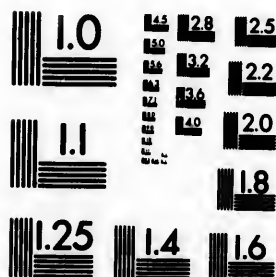


**IMAGE EVALUATION  
TEST TARGET (MT-3)**



**Photographic  
Sciences  
Corporation**

23 WEST MAIN STREET  
WEBSTER, N.Y. 14590  
(716) 872-4503

0  
1  
2  
3  
4  
5  
6  
7  
8  
9  
10  
11  
12  
13  
14  
15  
16  
17  
18  
19  
20  
21  
22  
23  
24  
25

**CIHM/ICMH  
Microfiche  
Series.**

**CIHM/ICMH  
Collection de  
microfiches.**



**Canadian Institute for Historical Microreproductions / Institut canadien de microreproductions historiques**

10  
11  
12  
13  
14  
15  
16  
17  
18  
19  
20  
21  
22  
23  
24  
25

**© 1983**

Technical and Bibliographic Notes/Notes techniques et bibliographiques

The Institute has attempted to obtain the best original copy available for filming. Features of this copy which may be bibliographically unique, which may alter any of the images in the reproduction, or which may significantly change the usual method of filming, are checked below.

L'Institut a microfilmé le meilleur exemplaire qu'il lui a été possible de se procurer. Les détails de cet exemplaire qui sont peut-être uniques du point de vue bibliographique, qui peuvent modifier une image reproduite, ou qui peuvent exiger une modification dans la méthode normale de filmage sont indiqués ci-dessous.

- Coloured covers/  
Couverture de couleur
- Covers damaged/  
Couverture endommagée
- Covers restored and/or laminated/  
Couverture restaurée et/ou pelliculée
- Cover title missing/  
Le titre de couverture manque
- Coloured maps/  
Cartes géographiques en couleur
- Coloured ink (i.e. other than blue or black)/  
Encre de couleur (i.e. autre que bleue ou noire)
- Coloured plates and/or illustrations/  
Planches et/ou illustrations en couleur
- Bound with other material/  
Relié avec d'autres documents
- Tight binding may cause shadows or distortion along interior margin/  
La reliure serrée peut causer de l'ombre ou de la distorsion le long de la marge intérieure
- Blank leaves added during restoration may appear within the text. Whenever possible, these have been omitted from filming/  
Il se peut que certaines pages blanches ajoutées lors d'une restauration apparaissent dans le texte, mais, lorsque cela était possible, ces pages n'ont pas été filmées.
- Additional comments:  
Commentaires supplémentaires:

- Coloured pages/  
Pages de couleur
- Pages damaged/  
Pages endommagées
- Pages restored and/or laminated/  
Pages restaurées et/ou pelliculées
- Pages discoloured, stained or foxed/  
Pages décolorées, tachetées ou piquées
- Pages detached/  
Pages détachées
- Showthrough/  
Transparence
- Quality of print varies/  
Qualité inégale de l'impression
- Includes supplementary material/  
Comprend du matériel supplémentaire
- Only edition available/  
Seule édition disponible
- Pages wholly or partially obscured by errata slips, tissues, etc., have been refilmed to ensure the best possible image/  
Les pages totalement ou partiellement obscurcies par un feuillet d'errata, une pelure, etc., ont été filmées à nouveau de façon à obtenir la meilleure image possible.

This item is filmed at the reduction ratio checked below/  
Ce document est filmé au taux de réduction indiqué ci-dessous.

10X	14X	18X	22X	26X	30X
<input type="checkbox"/>	<input type="checkbox"/>	<input checked="" type="checkbox"/>	<input type="checkbox"/>	<input type="checkbox"/>	<input type="checkbox"/>
12X	16X	20X	24X	28X	32X

The to th

The poss of th filmi

Orig begi the l sion othe first sion or ill

The shall TINU whic

Map diffe entir begi right requ meth

The copy filmed here has been reproduced thanks to the generosity of:

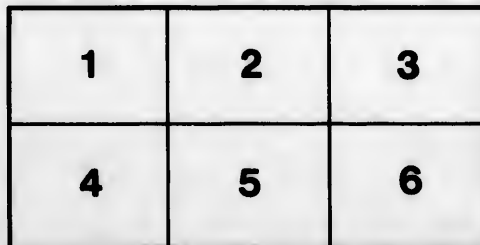
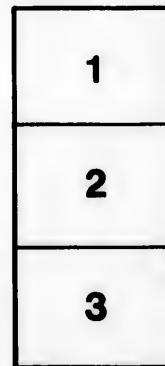
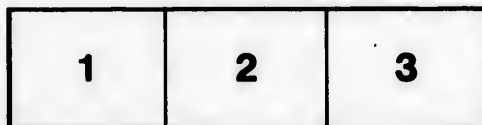
Library of the Public  
Archives of Canada

The images appearing here are the best quality possible considering the condition and legibility of the original copy and in keeping with the filming contract specifications.

Original copies in printed paper covers are filmed beginning with the front cover and ending on the last page with a printed or illustrated impression, or the back cover when appropriate. All other original copies are filmed beginning on the first page with a printed or illustrated impression, and ending on the last page with a printed or illustrated impression.

The last recorded frame on each microfiche shall contain the symbol  $\rightarrow$  (meaning "CONTINUED"), or the symbol  $\nabla$  (meaning "END"), whichever applies.

Maps, plates, charts, etc., may be filmed at different reduction ratios. Those too large to be entirely included in one exposure are filmed beginning in the upper left hand corner, left to right and top to bottom, as many frames as required. The following diagrams illustrate the method:



L'exemplaire filmé fut reproduit grâce à la générosité de:

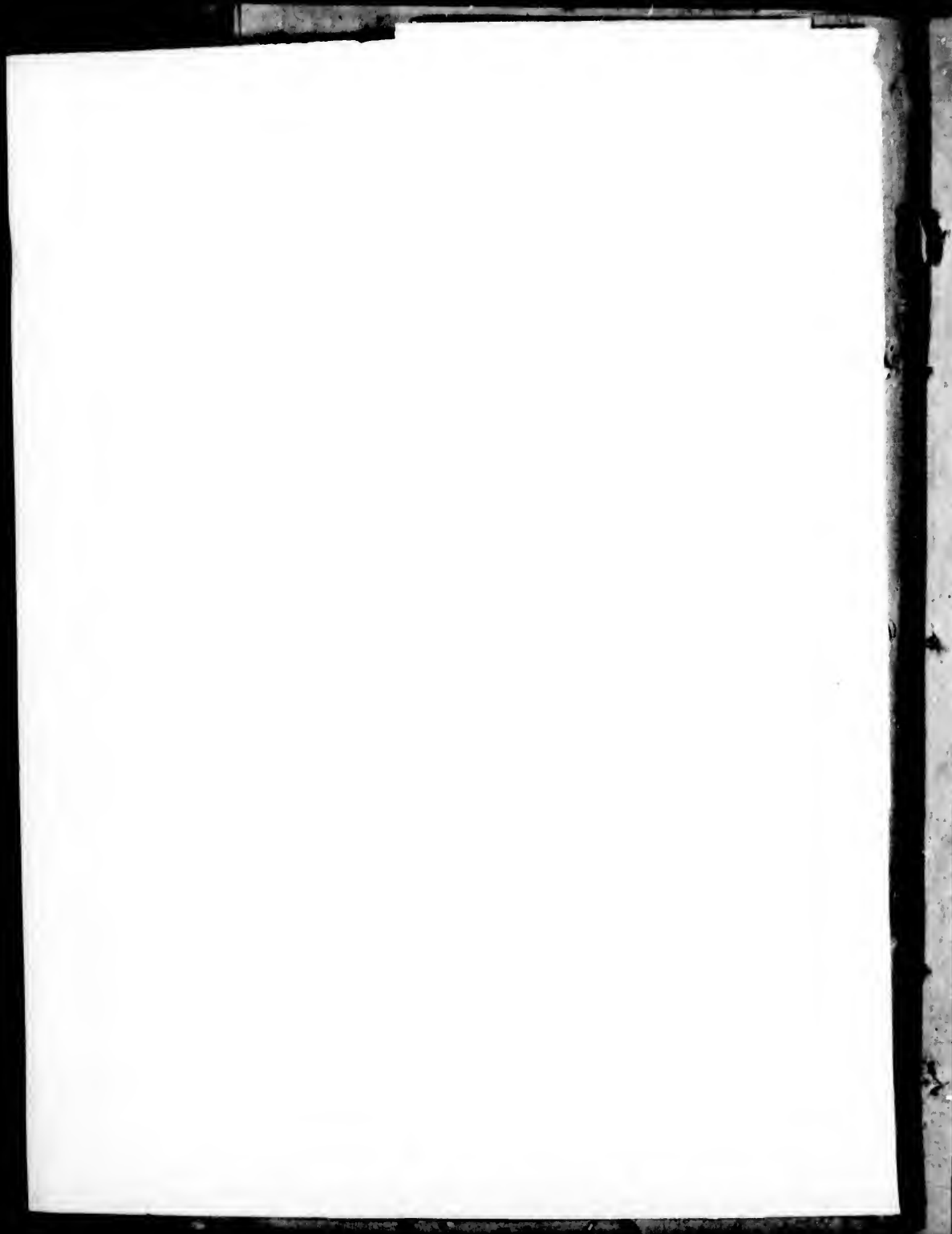
La bibliothèque des Archives  
publiques du Canada

Les images suivantes ont été reproduites avec le plus grand soin, compte tenu de la condition et de la netteté de l'exemplaire filmé, et en conformité avec les conditions du contrat de filmage.

Les exemplaires originaux dont la couverture en papier est imprimée sont filmés en commençant par le premier plat et en terminant soit par la dernière page qui comporte une empreinte d'impression ou d'illustration, soit par le second plat, selon le cas. Tous les autres exemplaires originaux sont filmés en commençant par la première page qui comporte une empreinte d'impression ou d'illustration et en terminant par la dernière page qui comporte une telle empreinte.

Un des symboles suivants apparaîtra sur la dernière image de chaque microfiche, selon le cas: le symbole  $\rightarrow$  signifie "A SUIVRE", le symbole  $\nabla$  signifie "FIN".

Les cartes, planches, tableaux, etc., peuvent être filmés à des taux de réduction différents. Lorsque le document est trop grand pour être reproduit en un seul cliché, il est filmé à partir de l'angle supérieur gauche, de gauche à droite, et de haut en bas, en prenant le nombre d'images nécessaire. Les diagrammes suivants illustrent la méthode.



THE  
**NEW-BRUNSWICK**  
**ALMANACK,**  
FOR THE YEAR OF OUR LORD  
**1832:**

BEING BISSEXTILE OR LEAP YEAR;  
And Second of the Reign of His Most Gracious Majesty  
**WILLIAM IV.**  
CALCULATED FOR THE MERIDIAN OF  
**SAINT JOHN,**  
But will serve for any other part of the Province.

CONTAINING

The Universal Calendar;  
Rising and setting of the Sun  
and Moon;  
Eclipses of the Luminaries;  
The Sun's Declination;  
Time of High Water;

The Civil, Ecclesiastical, and  
Military Provincial Register;  
Sitting of the different Courts;  
A variety of Agriculture, Sta-  
tistical, and other useful and  
interesting miscellanies;

AND A CORRECT LIST OF

**MILITIA OFFICERS**  
WITHIN THE PROVINCE.



SAINT JOHN:

PRINTED BY HENRY CHUBB, AND FOR SALE AT THE  
COURIER OFFICE, MARKET-SQUARE.

## ECLIPSES IN 1832.

There will be but two Eclipses this year, consequently both of the Sun, viz. :—

I. The first will be on the 1st day of February, at 5h. 39m. in the evening, invisible in the Northern hemisphere.

II. The second will be on the 27th of July, and visible as follows :

Beginning, 7h. 26m. ; Middle, 8h. 25m. ; End, 9h. 8m. ; Duration, 1h. 44m.—Apparent time in the morning.

Digits eclipsed 4° 24' on the Sun's southern limb.

There will be a transit of Mercury over the Sun's disc, on the 5th May, Beginning, 4h. 26m. ; Nearest approach, 7h. 50m. ; End, 11h. 16m. morn.

### CHRONOLOGICAL CYCLES FOR 1832.

Dominical Letters,	A & G	Solar Cycle,	21
Lunar Cycle or Golden Number,	9	Roman Indiction,	5
Epact,	28	Julian Period,	6546

### MOVEABLE FESTIVALS OF THE CHURCH.

Septagesima Sunday,	Feb. 19	Low Sunday,	April 29
Quinq. or Shrove do.	March 4	Rogation ditto.	May 27
Ash Wednesday, 1st day } of Lent,	" 7	Ascension Day, or } Holy Thursday,	" 31
Mid Lent Sunday,	April 1	Whit Sunday,	June 10
Palm Sunday,	" 15	Trinity "	" 17
Easter Day,	" 22	Advent "	Dec. 2

### Names and Characters of the Signs of the Zodiac.

♈ Aries, head.	♎ Libra, reins.
♉ Taurus, neck.	♏ Scorpio, secrets.
♊ Gemini, arms.	♐ Saggittarius, thighs.
♋ Cancer, breast.	♑ Capricornus, knees.
♌ Leo, heart.	♒ Acquarius, legs.
♍ Virgo, belly.	♓ Pisces, feet.

### Names and Characters of the Aspects and Nodes.

♁ Conjunction.	Vc Quincunx, 120 degrees.
* Sextile, 60 degrees.	♁ Opposition, 180 degrees.
◻ Quartile, 90 degrees.	♁ Ascending Node.
♊ Trine, 120 degrees.	♁ Descending Node.

### Names and Characters of the Planets.

☉ The Sun.	♂ Mars.
☾ The Moon.	♃ Jupiter.
☿ Mercury.	♄ Saturn.
♀ Venus.	♁ Herschell.
♁ The Earth.	

Made  
 O  
 O  
 T  
 T  
 A  
 A  
 A  
 A  
 A  
 A  
 [The  
 the quar  
 the cent  
 when on  
 the mas  
 An  
 A bl  
 A re  
 A wh  
 A wh  
 A fla  
 A pe  
 A bl  
 A fla  
 A pe  
 An U  
 is deta  
 A wh  
 A re  
 A B  
 Sh  
 In thic  
 each gun  
 pendant  
 T  
 The F  
 and at al  
 times in  
 rule can  
 and the  
 winds, a

## SIGNALS

*Made at Partridge Island, and repeated at the Tower in Carleton, on the approach of Vessels to this Harbour :*

- One Ball close, for one square rigged vessel,
- One Ball half hoisted, for two ditto,
- Two Balls close, for three ditto,
- Two Balls separated, for four ditto,
- A Pendant of any colour, for five ditto,
- A ditto under a Ball, for six ditto,
- A ditto over a Ball half hoisted, for seven ditto,
- A ditto under two Balls close, for eight ditto,
- A ditto between two Balls separate, for nine do.,
- A Flag of any colour, for ten or more ditto,

[The above are hoisted at the East or West yard arm, according to the quarter the vessel first appears in, with the addition of a Ball at the centre of the yard, until the rig of the vessel can be made out,—when one or more of the following descriptive colours will be hoisted at the mast head :]

- An Union Jack for a Flag Ship, with or without a squadron.
- Ditto with a red pendant over, for a two decker.
- Ditto with a blue pendant over, for a Frigate.
- Ditto with a white ditto, for a small armed vessel.

A blue Pendant, for a merchant ship.

A red ditto, for a merchant brig.

A white and blue ditto, for a Foreign vessel.

A white ditto, for a topsail schooner or sloop.

A flag blue and white horizontally, a neutral fleet.

A pendant white and blue, a neutral man of war.

A blue flag, a neutral merchant ship.

A flag, red, white, and blue, an enemy's fleet.

A pendant, red, white, and blue, an enemy's man-of-war.

An Union Jack over neutral or enemy's signals, the vessel is detained, or a prize.

A white flag over any signal, the vessel bears a flag of truce.

A red flag pierced white, for the Digby Packet.

A Ball at the mast head, vessel is on shore or in distress.—

☞ Should immediate aid be necessary, guns to be fired.

In thick weather, a gun will be fired at Partridge Island, in answer to each gun heard at sea.—When a vessel requires a Pilot, her descriptive pendant will be shown at a yard arm, instead of a Ball.

### TIME FOR GOING THROUGH THE FALLS.

The Falls are level (or still water) at about 3½ hours on the flood, and at about two and a half on the ebb, which makes them passable four times in 24 hours, about ten or fifteen minutes each time.—No other rule can be given, as much depends on the floods in the river St. John, and the time of high water or full sea, which is often hastened by high winds, and in proportion to the height of them.



**TABLE OF THE SUN'S DECLINATION,  
FOR THE YEAR 1832.**

*[Carefully corrected from NORRIS'S EPITOME.]*

Days	Jan.		Feb.		March.		April.		May.		June		Days
	South		South		South		North		North		North		
	°	'	°	'	°	'	°	'	°	'	°	'	
1	23	4	17	18	7	28	4	39	15	9	22	6	1
2	22	59	17	1	7	5	5	2	15	27	22	14	2
3	22	54	16	43	6	42	5	25	15	45	22	21	3
4	22	48	16	26	6	19	5	48	16	2	22	28	4
5	22	42	16	8	5	56	6	10	16	19	22	35	5
6	22	35	15	50	5	33	6	33	16	36	22	41	6
7	22	28	15	31	5	10	6	56	16	53	22	47	7
8	22	21	15	13	4	46	7	18	17	9	22	53	8
9	22	13	14	54	4	23	7	41	17	25	22	58	9
10	22	4	14	34	3	59	8	3	17	41	23	3	10
11	21	55	14	15	3	36	8	25	17	57	23	7	11
12	21	46	13	55	3	12	8	47	18	12	23	11	12
13	21	36	13	35	2	49	9	8	18	27	23	14	13
14	21	26	13	15	2	25	9	30	18	41	23	17	14
15	21	15	12	55	2	1	9	52	18	56	23	20	15
16	21	4	12	34	1	38	10	13	19	10	23	22	16
17	20	53	12	13	1	14	10	34	19	23	23	24	17
18	20	41	11	52	0	50	10	55	19	36	23	26	18
19	20	29	11	31	0	26	11	16	19	49	23	27	19
20	20	16	11	10	0	35	11	36	20	2	23	27	20
21	20	4	10	48	0	21 N	11	57	20	14	23	28	21
22	19	50	10	27	0	45	12	17	20	26	23	27	22
23	19	38	10	7	1	8	12	37	20	38	23	27	23
24	19	22	9	43	1	32	12	57	20	49	23	26	24
25	19	8	9	21	1	55	13	16	21	0	23	24	25
26	18	53	8	58	2	19	13	36	21	10	23	22	26
27	18	38	8	36	2	42	13	55	21	21	23	20	27
28	18	23	8	14	3	6	14	14	21	30	23	18	28
29	18	7	7	51	3	29	14	33	21	40	23	14	29
30	17	51			3	52	14	51	21	49	23	11	30
31	17	34			4	16			21	57			31

ON,

.]

**TABLE OF THE SUN'S DECLINATION,  
FOR THE YEAR 1832.**  
[Carefully corrected from NORIE's Epitome.]

June			Days	July.		August		Septemb.		Oct.		Nov.		Dec.		Days	
North				North	North	North	South	South	South	South	South	South					
0	1			0	1	0	1	0	1	0	1	0	1	0	1		
22	6	1		1	23	7	17	59	8	13	3	17	14	32	21	52	1
22	14	2		2	23	3	17	44	7	51	3	40	14	51	22	1	2
22	21	3		3	22	58	17	29	7	29	4	3	15	10	22	10	3
22	29	4		4	22	53	17	19	7	7	4	26	15	28	22	18	4
22	35	5		5	22	47	16	56	6	45	4	50	15	47	22	26	5
22	41	6		6	22	42	16	40	6	22	5	13	16	5	22	33	6
22	47	7		7	22	35	16	23	6	0	5	36	16	22	22	40	7
22	53	8		8	22	29	16	6	5	37	5	59	16	40	22	46	8
22	58	9		9	22	21	15	49	5	15	6	22	16	57	22	52	9
23	3	10		10	22	14	15	32	4	52	6	44	17	14	22	58	10
23	7	11		11	22	6	15	14	4	29	7	7	17	31	23	3	11
23	11	12		12	21	58	14	56	4	6	7	30	17	47	23	7	12
23	14	13		13	21	49	14	38	3	43	7	52	18	3	23	11	13
23	17	14		14	21	40	14	19	3	20	8	15	18	19	23	15	14
23	20	15		15	21	31	14	1	2	57	8	37	18	34	23	18	15
23	22	16		16	21	21	13	42	2	34	8	59	18	50	23	21	16
23	24	17		17	21	11	13	22	2	11	9	21	19	4	23	23	17
23	26	18		18	21	1	13	3	1	47	9	43	19	19	23	25	18
23	27	19		19	20	50	12	44	1	24	10	5	19	33	23	26	19
23	27	20		20	20	39	12	24	1	1	10	26	19	46	23	27	20
23	29	21		21	20	27	12	4	0	37	10	48	20	0	23	28	21
23	27	22		22	20	16	11	44	0	14	11	9	20	13	23	27	22
23	27	23		23	20	9	11	23	0	9	11	30	20	25	23	27	23
23	26	24		24	19	51	11	3	0	38	11	51	20	38	23	26	24
23	24	25		25	19	38	10	42	0	56	12	12	20	49	23	24	25
23	22	26		26	19	25	10	21	1	20	12	32	21	1	23	22	26
23	20	27		27	19	12	10	0	1	43	12	53	21	12	23	20	27
23	18	28		28	18	58	9	39	2	6	13	13	21	23	23	17	28
23	14	29		29	18	44	9	18	2	30	13	35	21	33	23	14	29
23	11	30		30	18	29	8	57	2	53	13	53	21	43	23	10	30
		31		31	18	14	6	35			14	12			23	5	31

**GEOGRAPHICAL POSITION OF HEADLANDS, &c.**  
 ON THE COAST OF NORTH AMERICA,  
*Determined on the spot by Astronomical Observations.*

PLACE OF OBSERVATION.	LATITUDE North.	Longitude West of Greenwich
Saint John, N. B. ....	45 15 0	66 6 19
Partridge Island Light House, ...	45 13 36	
Beaver Harbour, South West } Point of the entrance, }	... 45 3 12	66 47 23
Navy Island, South East Point, ...	45 2 24	67 5 47
Bliss' Island, South West Point, } L'Etang Harbour, }	... 45 0 15	66 54 27
Head Harbour Light H., Campo Bello,	44 56 50	66 56 58
Grand Manan, North Point, ...	44 46 49	66 49 7
Ditto, Swallow-tail Point, ...	44 44 54	66 47 21
Ditto, White-Head Island, ...	44 36 59	66 45 4
Brier's Island Light House, ...	44 13 51	66 26 54
Digby Light House, ...	44 40 25	65 50 15
HALIFAX, Naval Yard, (Meridian) ...	44 39 26	63 37 43
Green Island, Country Harbor, S. Point,	45 4 55	61 34 49
Canso Light House, ...	45 19 33	60 58 30
Eddy Point, Gut of Canso, ...	45 30 25	61 16 54
Pictou Island, South side, ...	45 47 52	62 37 33
Pictou Harbour, ...	45 41 56	62 42 0
Liverpool Light House, ...	44 1 52	64 40 49
Western Head, Liverpool Bay, ...	43 59 13	64 42 34
Long projecting Point between Rugged Island Harbour and Green Harbour,	43 39 40	65 11 28
Shelburne Light House, ...	43 37 31	65 19 40
Sandy Point, Shelburne Harbour, ...	43 41 57	65 22 11
Cape Sable, South Point, ...	43 23 57	65 33 3
South Seal Island, South Point, ...	43 23 51	65 59 42
Ditto, North Point, ...	43 26 22	66 1 38
Sable Island, East end, ...	43 59 15	59 48 17
Ditto, West end, ...	43 56 30	60 13 34
Louisburg, Ruins of the old Light-house,	45 53 31	59 59 43
Cape Breton, extreme Point, ...	45 56 26	59 50 15
City of Quebec, ...	46 48 30	71 16 25
Saint Paul's Island, ...	47 12 38	60 11 24
Cape Gaspe, South East Point, ...	48 45 14	64 13 33
Anticosti, West Point, ...	49 52 29	64 36 54
Magdalen Island, North East Point, ...	47 37 37	61 26 51
Prince Edward Island, West Point, ...	46 37 48	64 24 24
Saint John's, (N. F.) Fort Townshend, ...	47 33 33	52 45 10
Dock Yard, Bermuda, ...	32 19 16	64 54 18

S, &c.

Longitude  
West of  
Greenwich

6 19

47 28

5 47

54 27

56 58

49 7

47 21

45 4

26 54

50 15

37 48

34 49

58 30

16 54

37 38

42 0

40 49

42 34

11 28

18 40

22 11

38 3

59 42

1 38

48 17

13 34

59 48

50 15

16 25

11 24

13 38

36 54

26 51

24 24

45 10

54 18

JANUARY 20 - NINE DAYS

Table with multiple columns and rows of data, likely astronomical or navigational information. The text is very faint and difficult to read.

Saw  
 Pat  
 Bee  
 B  
 Nat  
 Blic  
 Hea  
 Gra  
 D  
 D  
 Brig  
 Dig  
 HAL  
 Gred  
 Cant  
 Eddy  
 Pict  
 Pict  
 Live  
 Wes  
 Lon  
 I  
 Shell  
 Sand  
 Cape  
 South  
 Sable  
 Di  
 Louis  
 Cape  
 City  
 Saint  
 Cape  
 Antic  
 Mag  
 Princ  
 Saint  
 Dock

Every  
 ent; and  
 each oth  
 The g  
 but the  
 Study

New M  
 First Q

D.	D.
M.	W.
1	SU
2	Mo
3	Tu
4	We
5	Th
6	Fri
7	Sat
8	SU
9	Mo
10	Tu
11	We
12	Th
13	Fri
14	Sat
15	SU
16	Mo
17	Tu
18	We
19	Th
20	Fri
21	Sat
22	SU
23	Mo
24	Tu
25	We
26	Th
27	Fri
28	Sat
29	SU
30	Mo
31	Tu

# JANUARY HATH XXXI DAYS.

Every character is in some respects uniform, and in others inconsistent; and it is only by the study of both, and a comparison of them with each other, that the knowledge of man is acquired.

The great fault of the human understanding, is not the not going well, but the not stopping well.

Study profiteth little, if it does not teach us to avoid disputation.

## MOON'S PHASES.

New Moon, 2d day, 10h 32m A. | Full Moon, 17th day, 11h 20m M.  
 First Quarter, 10th day, 8h 14m A. | Last Quarter, 24th day, 0h 23m A.

D.	D. W.	CALENDAR, &c.	☺ R. & S.		● R. & S.		○ Plac.	High water
			h.	m.	h.	m.		
1	SU	Circumcision. <i>Fine weather.</i>	7	39	5	6	0	thi. 10 11
2	Mo	☽ apogee. rather high tides.	7	38	5	5	Sets.	knee 10 49
3	Tu	<i>Signs of snow.</i>	7	37	5	5	11	knee 11 24
4	We		7	37	5	6	6	leg. 11 53
5	Th	7 stars south 8h. 29m.	7	36	5	7	3	leg. ev. 32
6	Fri	Epiphany. <i>A cold spell</i>	7	36	5	8	4	leg. 1 6
7	Sat		7	35	5	9	5	feet. 1 42
8	SU	1st Sunday after Epiphany.	7	35	5	10	8	feet 2 19
9	Mo	<i>may be</i>	7	34	5	11	12	head 3 1
10	Tu	Low tides. <i>expected.</i>	7	33	5	5	Morn	head 3 52
11	We	Linnæus d. 1778. 2. v. 3h. 34	7	32	5	0	18	head 5 0
12	Th	Lavater d. 1801. <i>More</i>	7	32	5	1	29	neck 6 20
13	Fri	C. J. Fox b. 1749.	7	31	5	2	41	neck 7 42
14	Sat	<i>mild.</i>	7	30	5	3	51	arm 8 54
15	SU	2d Sunday after Epiphany,	7	29	5	5	2	arm 9 53
16	Mo	Battle of Corunna, 1809.	7	28	5	6	9	bre. 10 42
17	Tu	Franklin b. 1706. <i>Clear.</i>	7	27	5		rises	bre. 11 29
18	We	Prisca.	7	26	5	6	6	hart. Morn
19	Th	Congreve d. 1728. Jas. Watt	7	25	5	7	19	hart. 0 11
20	Fri	[b. 1736.	7	24	5	8	31	belly 0 50
21	Sat	<i>Falling weather.</i>	7	23	5	9	39	belly 1 29
22	SU	3d Sun. af. Epiph. Byron b.	7	22	5	10	46	rein. 2 7
23	Mo	Wm. Pitt d. 1806 [1788,	7	21	5	11	50	rein. 2 50
24	Tu	Low tides. <i>Becomes</i>	7	20	5		Morn	secr. 3 38
25	We	Conversion of St. Paul.	7	19	5	0	51	secr. 4 34
26	Th	Dr. Jenner d. 1823. <i>more</i>	7	17	5	1	51	secr. 5 41
27	Fri	Duke of Sussex b. 1773. <i>set.</i>	7	16	5	2	48	thi. 6 51
28	Sat	Peter the Gt. d. 1725. <i>ted.</i>	7	15	5	3	44	thi. 7 53
29	SU	4th Sun. af. Epiph. Geo. III.	7	14	5	4	37	knee 8 54
30	Mo	Chas. I. beh. [d. 1820.	7	13	5	5	27	knee 9 40
31	Tu	High tides. <i>Changeable.</i>	7	12	5	6	12	knee 10 20

# FEBRUARY HATH XXIX DAYS.

Pleasure is a game for which it will be in vain to try; it must start before you, or you'll never find.

Nothing so difficult as tracing effects into causes; nothing so quick as the inventton of causes for effects.

The sense to conduct sense is worth every other part of it; for great abilities are more frequently possessed, than properly applied.

It is a melancholy consideration, that the difficulty of gaining reputation or riches should be great in proportion to the want of them.

## MOON'S PHASES.

New Moon, 1st day, 5h 46m M. | Full Moon, 15th day, 10h 44m M.  
 First Quarter, 9th day, 6h 43m M. | Last Quarter, 23d day, 7h 51m M.

D.	D.	CALENDAR, &c.	☾	●	R.	○	High
M.	W.		R. & S.	& S.	S.	Plac	water
			i. m. h.	h. m.	h. m.		h. m.
1	We	Sun eclipsed.	7 10 5	Sets.	legs	10 43	
2	Th	Purification of B. V. Mary.	7 9 5	5 48	legs	11 14	
3	Fri	Spanish Inv. abo. 1813.	7 8 5	6 50	feet	11 54	
4	Sat	<i>Very cold.</i>	7 6 5	7 53	feet	ev 27	
5	SU	5th Sunday after Epiphany.	7 5 5	8 57	feet	0 39	
6	Mo	Dr. Priestley d. 1804.	7 4 5	10 4	head	1 4	
7	Tu	<i>A snow storm</i>	7 3 5	11 10	head	1 44	
8	We	Mary Q. of Scots beh. 1536.	7 2 5	Morn	neck	2 33	
9	Th	Low tides.	7 0 5	0 19	neck	3 35	
10	Fri	<i>is at hand.</i>	6 59 6	1 30	arms	4 58	
11	Sat		6 57 6	2 39	arms	6 31	
12	SU	6th Sunday after Epiphany.	6 55 6	3 47	breast	7 50	
13	Mo	<i>Some sudden changes</i>	6 54 6	4 49	breast	8 51	
14	Tu	Valentine.	6 53 6	5 42	hart.	9 41	
15	We	<i>will take place</i>	6 51 6	Rises.	hart.	10 25	
16	Th	High tides.	6 50 6	6 1	belly	11 9	
17	Fri	<i>about this time.</i>	6 49 6	7 13	belly	11 40	
18	Sat	Martin Luther d. 1546.	6 47 6	8 23	reins	Morn.	
19	SU	Septuagesima Sunday.	6 46 6	9 30	reins	0 16	
20	Mo		6 44 6	10 35	reins	0 52	
21	Tu	<i>Rain or snow.</i>	6 43 6	11 37	secr.	1 39	
22	We		6 41 6	Morn	secr.	2 11	
23	Th	Low tides.	6 40 6	0 39	thi.	3 1	
24	Fri	St. Matthias. D. of Camb. b.	6 39 6	1 35	chi.	4 4	
25	Sat	Earl of Essex beheaded.	6 37 6	2 29	knee	5 15	
26	SU	Sexagesima Sun. <i>Cold winds.</i>	6 35 6	3 21	knee	6 31	
27	Mo		6 34 6	4 9	knee	7 37	
28	Tu		6 32 6	4 51	legs	8 23	
29	We	<i>Grows milder.</i>	6 30 6	5 30	legs	9 21	

ust start  
quick as  
for great  
reputati-

44m M.  
51m M.

High  
water  
h. m.

10 43  
11 14  
11 54  
ev 27  
0 39  
1 4  
1 44  
2 33  
3 35  
4 58  
6 31  
7 50  
8 51  
9 41  
10 25  
11 9  
11 40  
Morn.  
0 16  
0 52  
1 39  
2 11  
3 1  
4 4  
5 15  
6 31  
7 37  
8 23  
9 21



be  
 the  
 ab  
 on  
 No  
 Fi  
 D. M.  
 1  
 2  
 3  
 4  
 5  
 6  
 7  
 8  
 9  
 10  
 11  
 12  
 13  
 14  
 15  
 16  
 17  
 18  
 19  
 20  
 21  
 22  
 23  
 24  
 25  
 26  
 27  
 28  
 29  
 30  
 31

True deli  
 itself, if the  
 Nothing a  
 Some mor  
 sensibly; the

New Moon,  
 First Quarte

D.	W.	
1	Th	St.
2	Fri	J. V
3	Sat	
4	SU	Qu
5	Mo	
6	Tu	Sh
7	We	As
8	Th	Lo
9	Fri	7
10	Sat	Be
11	SU	1st
12	Mo	
13	Tu	Pla
14	We	Ad
15	Th	
16	Fri	
17	Sat	St.
18	SU	2d
19	Mo	
20	Tu	
21	We	Ar
22	Th	Si
23	Fri	Sa
24	Sat	
25	SU	3d
26	Mo	Ec
27	Tu	Pe
28	We	
29	Th	Sw
30	Fri	Al
31	Sat	

# MARCH HATH XXXI DAYS.

True delicacy, as true generosity, is more wounded by an offence from itself, if the expression may be allowed, than to itself.

Nothing abridges life like false steps, idle words, and vain thoughts.

Some men talk sensibly and act foolishly; some talk foolishly and act sensibly; the first laugh at the last, the last cheat the first.

## MOON'S PHASES.

New Moon, 2d day, 10h 42m M. | Full Moon, 16th day, 11h. 15m M.  
 First Quarter, 9th day, 2h 8m A. | Last Quarter, 24th day, 4h 32m M.

D.	D. W.	CALENDAR, &c.	☉	☽	R.	☉	High water
N.	M.		R. & S.	& sets	Plac.	h. m.	
			h. m. h.	h. m.			
1	Th	St. David. Reform Bill intro-	6 29 6	6 4	feet	10 35	
2	Fri	J. Wesley d. 1791. [duced '31	6 27 6	6 Sets.	feet	11 11	
3	Sat	<i>Chilling winds,</i>	6 26 6	6 50	feet	11 44	
4	SU	Quinquagesima Sunday.	6 25 6	7 57	head	ev 18	
5	Mo	<i>but pleasant</i>	6 23 6	9 7	head	0 54	
6	Tu	Shrove Tuesday.	6 22 6	10 16	neck	1 32	
7	We	Ash Wednesday.	6 20 6	11 24	neck	2 13	
8	Th	Low tides. <i>for the season.</i>	6 19 6	Morn	arms	3 4	
9	Fri	7 stars set 11h. 50m.	6 17 6	0 34	arms	4 6	
10	Sat	Ben. West d. 1820.	6 16 6	1 40	breast	5 33	
11	SU	1st Sunday in Lent.	6 14 6	2 42	breast	7 8	
12	Mo	<i>Grows warmer.</i>	6 12 6	3 38	hart.	8 28	
13	Tu	Planet Hersch. disc. 1783.	6 11 6	4 29	hart.	9 26	
14	We	Admiral Byng shot, 1757.	6 9 6	5 9	hart.	10 11	
15	Th	<i>Changeable,</i>	6 8 6	5 45	belly	10 58	
16	Fri		6 6 6	Rises.	belly	11 30	
17	Sat	St. Patrick.	6 5 6	7 16	reion	Morn	
18	SU	2d Sunday in Lent.	6 3 6	8 23	reint	0 5	
19	Mo	<i>with</i>	6 1 6	9 28	secr.	0 39	
20	Tu		6 0 6	10 30	secr.	1 14	
21	We	Archbp. Cranmer burnt 1556	5 58 7	11 31	thi.	1 50	
22	Th	Sir I. Newton d. 1797.	5 57 7	Morn	thi.	2 30	
23	Fri	Satura south 10h. 40m.	5 55 7	0 27	thi.	3 17	
24	Sat	<i>snow or rain,</i>	5 54 7	1 21	knee	4 12	
25	SU	3d Sun in Lent. Lady day.	5 52 7	2 10	knee	5 22	
26	Mo	Bona. ret. from Elba, 1815.	5 50 7	2 55	legs	6 42	
27	Tu	Peace of Amiens, 1802.	5 49 7	3 35	legs	7 50	
28	We	<i>Dull and cloudy.</i>	5 47 7	4 11	legs	8 40	
29	Th	Swedenborg died, 1772.	5 46 7	4 43	feet	9 35	
30	Fri	Allies enter Paris, 1814.	5 44 7	5 19	feet	10 15	
31	Sat	<i>Moderate weather.</i>	5 43 7	5 44	head	10 52	

## APRIL HATH XXX DAYS.

We are never so ready to praise, as when we are inclined to detract; and often has one man, nay one nation, been flattered by the commendations of a writer, who really meant no more than to fix a stronger censure upon another.

Some men are like certain stuffs, beautiful on one side, hideous on the other. Error is often nourished by good sense.

### MOON'S PHASES.

New Moon, 1st day, 0h 22m M.	Last Quarter, 22d day, 11h 27m M.
First Quarter, 7th day, 9h 7m A.	New Moon, 30th day, 10h 53m M.
Full Moon, 14th day, 11h 16m A.	

D. M.	D. W.	CALENDAR, &c.	☺ R. & S. h. m. h.	○ R. & sets h. m.	○ Plac.	High water h. m.
1	SU	4th Sunday in Lent.	5 41 7	Sets.	head	11 28
2	Mo		5 40 7	8 12	neck	ev 5
3	Tu	<i>High winds</i>	5 38 7	9 22	neck	0 43
4	We	O. Goldsmith died, 1774.	5 36 7	10 34	arms	1 28
5	Th		5 35 7	11 42	arms	2 7
6	Fri	Moon in Perigee.	5 34 7	Morn	arms	3 1
7	Sat	7 stars south 10h. <i>and</i>	5 33 7	0 46	breast	4 9
8	SU	5th Sunday in Lent.	5 31 7	1 44	breast	5 33
9	Mo	<i>perhaps rain.</i>	5 30 7	2 34	hart	7 5
10	Tu		5 28 7	3 17	hart	8 18
11	We	Geo. Canning born, 1770.	5 27 7	3 54	belly	9 14
12	Th	Spi. set at midnight.	5 25 7	4 27	belly	9 58
13	Fri	<i>Clear and pleasant.</i>	5 23 7	4 57	reins	10 36
14	Sat	Mid tides.	5 22 7	Rises.	reins	11 12
15	SU	6th Sunday in Lent. Palma S.	5 20 7	7 20	secr.	11 45
16	Mo	Shakspeare born, 1594.	5 19 7	8 23	secr.	Morn
17	Tu	Franklin died, 1790.	5 17 7	9 25	secr.	0 19
18	We	<i>Heavy rains.</i>	5 16 7	10 25	thi.	0 54
19	Th		5 15 7	11 21	thi.	1 30
20	Fri	Good Friday.	5 13 7	Morn	knee	2 9
21	Sat	Moon in apogee.	5 12 7	0 11	knee	2 52
22	SU	Easter Day. <i>Pleasant</i>	5 11 7	0 53	knee	3 44
23	Mo	Easter Monday. St. George.	5 9 7	1 39	legs	4 49
24	Tu	Easter Tuesday. <i>weather.</i>	5 8 7	2 16	legs	6 0
25	We	St. Mark. Ds. Glou. b. 1776.	5 7 7	2 49	feet	7 15
26	Th	<i>Hail.</i>	5 5 7	3 21	feet	8 18
27	Fri	7 stars set 3h. 47.	5 4 7	3 50	feet	9 9
28	Sat	<i>or perhaps rain.</i>	5 2 7	4 19	head	9 51
29	SU	1st Sun. after Easter. Low S.	5 1 7	4 47	head	10 33
30	Mo	High tides.	4 59 3	Sets.	neck	11 12

Winter  
 very  
 the 4  
 the 1  
 the 2  
 the 3  
 the 4  
 the 5  
 the 6  
 the 7  
 the 8  
 the 9  
 the 10  
 the 11  
 the 12  
 the 13  
 the 14  
 the 15  
 the 16  
 the 17  
 the 18  
 the 19  
 the 20  
 the 21  
 the 22  
 the 23  
 the 24  
 the 25  
 the 26  
 the 27  
 the 28  
 the 29  
 the 30  
 the 31

subtract;  
pounds;  
per cen-

on the

27m M.  
53m M.

High  
water  
h. m.

11 28

ev 5

0 43

1 28

2 7

3 1

4 9

5 33

7 5

8 18

9 14

9 58

10 36

11 12

11 45

Morn

0 19

0 54

1 30

2 9

2 52

3 44

4 49

6 0

7 15

8 18

9 9

9 51

0 33

1 12

A regular continuation of  
winter all this month - weather  
very severe. Snow 2 feet deep on  
the 4<sup>th</sup> again on the

In good & favorable for travelling  
on the 22<sup>nd</sup> - Much frozen in  
the harbor on the 22<sup>nd</sup> -  
snow 2 feet deep

1  
 2  
 3  
 4  
 5  
 6  
 7  
 8  
 9  
 10  
 11  
 12  
 13  
 14  
 15  
 16  
 17  
 18  
 19  
 20  
 21  
 22  
 23  
 24  
 25  
 26  
 27  
 28  
 29  
 30

The oak, v  
 also which a  
 same observa  
 The use of  
 of others; th  
 No man w  
  
 First Quarter  
 Full Moon, 1  
  
 D. W.  
 D. M.  
 1 Tu High  
 2 We Mod  
 3 Th Seri  
 4 Fri Bon  
 5 Sat 2d S  
 6 SU  
 7 Mo  
 8 Tu Low  
 9 We Colu  
 10 Th  
 11 Fri Lorc  
 12 Sat  
 13 SU 3d S  
 14 Mo  
 15 Tu Batt  
 16 We Batt  
 17 Th  
 18 Fri  
 19 Sat Mod  
 20 SU 4th  
 21 Mo Low  
 22 Tu Pop  
 23 We Batt  
 24 Th  
 25 Fri  
 26 Sat 7 st  
 27 SU 5th  
 28 Mo KIN  
 29 Tu High  
 30 We  
 31 Th Asc

The oak, v	
also which a	
same observa	
The use of	
of others; th	
No man w	
First Quarter	
Full Moon, 1	
D. W.	
D. M.	
1	Tu High
2	We Mod
3	Th Seri
4	Fri Bon
5	Sat 2d S
6	SU
7	Mo
8	Tu Low
9	We Colu
10	Th
11	Fri Lorc
12	Sat
13	SU 3d S
14	Mo
15	Tu Batt
16	We Batt
17	Th
18	Fri
19	Sat Mod
20	SU 4th
21	Mo Low
22	Tu Pop
23	We Batt
24	Th
25	Fri
26	Sat 7 st
27	SU 5th
28	Mo KIN
29	Tu High
30	We
31	Th Asc

## MAY HATH XXXI DAYS.

The oak, which is generally considered as the king of trees, is that also which arrives latest at perfection; and perhaps, in some sense, the same observation may be true with respect to mankind.

The use of conversation is the perceiving, perhaps adopting, the ideas of others; the end, the displaying our own.

No man was ever so much deceived by another as by himself.

### MOON'S PHASES.

First Quarter, 7th day, 3h 17m M. | Last Quarter, 22d day, 4h 32m A.  
Full Moon, 14th day, 0h 36m A. | New Moon, 29th day, 7h 9m A.

D.	D. W.	CALENDAR, &c.	☉		○ R.		Plac.	High water h. m.
			R. & S. h. m.	h.	& sets h. m.	h.		
1	Tu		4	53	8	24	neck	11 52
2	We	High tides.	4	57	8	9 37	arms	ev 34
3	Th	Moon in perigee. <i>Warm,</i>	4	56	8	10 46	arms	1 18
4	Fri	Seringapatam taken, 1799.	4	55	8	11 46	breast	2 6
5	Sat	Bonaparte died, 1821.	4	53	8	Morn	breast	2 58
6	SU	2d Sunday after Easter.	4	52	8	0 32	hart	4 3
7	Mo	<i>with occasional showers.</i>	4	51	8	1 25	hart	5 22
8	Tu	Low tides.	4	50	8	2 2	belly	6 48
9	We	Columbus sailed from Cadiz,	4	49	8	2 36	belly	7 55
10	Th	[1501.	4	47	8	3 6	reins	8 51
11	Fri	Lord Chatham died, 1778.	4	46	8	3 33	reins	9 37
12	Sat	<i>Raw winds.</i>	4	45	8	4 0	rein.	10 15
13	SU	3d Sunday after Easter.	4	44	8	4 28	seer.	10 51
14	Mo		4	43	8	Rises.	seer.	11 25
15	Tu	<i>Clear and pleasant.</i>	4	42	8	8 18	thi.	11 59
16	We	Battle of Albuers, 1811.	4	41	8	9 15	thi.	Morn
17	Th		4	40	8	10 9	knee	0 33
18	Fri	<i>Fine weather</i>	4	39	8	10 57	knee	1 9
19	Sat	Moon in apogee.	4	38	8	11 40	knee	1 47
20	SU	4th Sunday after Easter.	4	37	8	Morn	legs	2 27
21	Mo	Low tides. <i>for planting.</i>	4	36	8	0 10	legs	3 12
22	Tu	Pope born, 1683.	4	35	8	0 53	legs	4 3
23	We	Battle of Ramillies, 1706.	4	34	8	1 23	feet	5 10
24	Th		4	34	8	1 50	feet	6 20
25	Fri	<i>Unsteady for</i>	4	33	8	2 18	head	7 31
26	Sat	7 stars rise 4h. morn. <i>some</i>	4	32	8	2 46	head	8 34
27	SU	5th Sun. af. Easter. Rog. S.	4	31	8	3 16	neck	9 25
28	Mo	King's birth day kept. <i>days.</i>	4	30	8	3 49	neck	10 10
29	Tu	High tides.	4	29	8	4 27	arms	10 55
30	We		4	27	8	5 27	arms	11 39
31	Th	Ascension day. Holy Thurs.	4	28	8	9 34	breast	ev. 23

# JUNE HATH XXX DAYS.

People seldom speak ill of themselves, but when they have a good chance of being contradicted.

A maxim is sometimes like the seed of a plant, which the soil it is thrown into must expand into leaves, and flowers, and fruit; so that great part of it must sometimes be *written*, as it were, by the *reader*.

Very nice scruples are sometimes the effect of a great mind, but often of a little one.

## MOON'S PHASES.

First Quarter, 5th day, 10h 13m M | Last Quarter, 21st day, 6h 31m M.  
Full Moon, 13th day, 3h 5m M. | New Moon, 28th day, 2h 17m M.

D.	D.	CALENDAR, &c.	R.	S.	R.	S.	R.	S.	High water
D.	W.		h.	m.	h.	h.	m.	Plac.	h. m.
1	Fri	Nicom. High tides.	4	26	8	10	58	breast	1 9
2	Sat	Peace signed at Paris, 1814.	4	26	8	11	22	hart.	1 55
3	SU	Sunday after Ascension.	4	25	8	MORN		hart.	2 46
4	Mo	P. Leopold elected K. of Belgium, 1831.	4	25	8	0	3	belly	3 42
5	Tu		4	24	8	0	38	belly	4 49
6	We	<i>Warm for the</i>	4	23	8	1	8	belly	6 1
7	Th		4	23	8	1	36	reins	7 15
8	Fri	<i>season.</i>	4	23	8	2	3	reins	8 15
9	Sat	7 stars rise, 3h. morn.	4	22	8	2	30	secr.	9 5
10	SU	Whit Sunday.	4	22	8	2	58	secr.	9 43
11	Mo	Whit Monday.	4	21	8	3	28	thi.	10 26
12	Tu	Whit Tuesday. <i>Refresh-</i>	4	21	8	4	2	thi.	11 2
13	We	High tides.	4	21	8	RISES.		thi.	11 36
14	Th	<i>ing showers.</i>	4	20	8	3	50	knee	MORN
15	Fri	Moon in apogee.	4	20	8	9	35	knee	0 12
16	Sat		4	20	8	10	14	legs	0 46
17	SU	Trinity Sunday.	4	20	8	10	50	legs	1 21
18	Mo	Battle of Waterloo, 1815.	4	20	8	11	21	legs	1 56
19	Tu	Magna Charta signed, 1215.	4	20	8	11	50	feet	2 57
20	We	<i>Very warm</i>	4	20	8	MORN		feet	3 20
21	Th	Battle of Vittoria, 1815.	4	20	8	0	17	head	4 12
22	Fri	<i>for a few days.</i>	4	20	8	0	43	head	5 19
23	Sat	St. John Bap.	4	20	8	1	10	head	6 34
24	SU	1st Sun. after Trin. Nat. of	4	20	8	1	40	neck	7 47
25	Mo	<i>Changeable.</i>	4	20	8	2	15	neck	8 52
26	Tu	Geo. IV. died, 1830.	4	20	8	2	54	arms	9 48
27	We	<i>with</i>	4	20	8	3	42	arms	10 37
28	Th	King Wm. IV. proclaimed.	4	21	8	3	5	breast	11 24
29	Fri	St. Peter.	4	21	8	9	6	breast	ev. 9
30	Sat	<i>showers.</i>	4	21	8	9	52	hart.	0 53

A fool  
sense the  
We are  
even who  
We sho  
who are d

First Qu  
Full Moo

D.	D.	
D.	W.	
1	SU	
2	Mo	
3	Tu	
4	We	
5	Th	
6	Fri	
7	Sat	
8	SU	
9	Mo	
10	Tu	
11	We	
12	Th	
13	Fri	
14	Sat	
15	SU	
16	Mo	
17	Tu	
18	We	
19	Th	
20	Fri	
21	Sat	
22	SU	
23	Mo	
24	Tu	
25	We	
26	Th	
27	Fri	
28	Sat	
29	SU	
30	Mo	
31	Tu	

# JULY HATH XXXI DAYS.

A fool has often the contrivance of the man of sense, and a man of sense the prejudice of the fool.

We are often governed by people not only weaker than ourselves, but even whom we think so.

We should ask those who are well, how we ought to die; and those who are dying how we ought to live.— *Chinese.*

## MOON'S PHASES.

First Quarter, 4th day, 6h 53m A. | Last Quarter, 20th day, 5h 24m A.  
Full Moon, 12th day, 6h 16m A. | New Moon, 27th day, 9h 17m M.

D.	D.	CALENDAR, &c.	☉		☽		Plac.	High water
			R. & S.	& S.	R. & S.	& S.		
h. m.	h. m.		h. m.	h. m.	h. m.	h. m.	h. m.	
1	SU	2d Sunday after Trinity.	4 21	8 10	32	hart	1 36	
2	Mo	Visitation of B. V. Mary.	4 22	8 11	4	belly	2 21	
3	Tu	<i>Fine growing weather.</i>	4 22	8 11	34	belly	3 7	
4	We		4 23	8	Morn	reins	4 0	
5	Th	French take Algiers, 1830.	4 23	8	0	2	reins	5 7
6	Fri	<i>Warm and</i>	4 24	8	0	29	secr.	6 19
7	Sat	Sheridan died, 1816.	4 24	8	0	57	secr.	7 27
8	SU	3d Sunday after Trinity.	4 25	8	1	27	secr.	8 29
9	Mo	<i>pleasant.</i>	4 25	8	2	0	thi.	9 17
10	Tu	Calvin born, 1509.	4 26	8	2	37	thi.	9 59
11	We		4 27	8	3	17	knee	10 37
12	Th	Moon in apogee.	4 27	8	Rises.	knee	11 13	
13	Fri	<i>Good</i>	4 28	8	8	9	knee	11 47
14	Sat	French rev. of 1789 began.	4 29	8	8	47	legs	Morn
15	SU	4th Sun. af. Trin. Swithin.	4 30	8	9	19	legs	0 21
16	Mo	<i>haying weather.</i>	4 30	8	9	48	feet	0 54
17	Tu		4 31	8	10	15	feet	1 28
18	We		4 32	8	10	42	feet	2 2
19	Th	Bull's Eye rises 1h. 30.	4 33	8	11	9	head	2 43
20	Fri	Margaret. <i>Low tides.</i>	4 34	8	11	55	head	3 29
21	Sat	Rob. Burns d. 1796. <i>Some</i>	4 35	8	Morn	neck	4 28	
22	SU	5th Sun after Trin. Mag.	4 36	8	0	7	neck	5 43
23	Mo	Union of Eng. & Scot. 1706.	4 37	8	0	42	arms	7 9
24	Tu	<i>showers.</i>	4 38	8	1	27	arms	8 29
25	We	Rev. in France, 1830. Dog	4 39	8	2	18	breast	9 31
26	Th	[days begin.]	4 40	8	3	18	breast	10 21
27	Fri	<i>Fine and</i>	4 41	8	Sets.	hart.	11 11	
28	Sat	High tides.	4 42	8	8	22	hart.	11 54
29	SU	6th Sunday after Trinity.	4 43	8	8	59	belly	ev. 35
30	Mo		4 44	8	9	33	belly	1 15
31	Tu	<i>clear.</i>	4 45	8	10	2	reins	1 54



# AUGUST HATH XXXI DAYS.

What nice distinctions are to be made in the characters of mankind! contempt for money and profusion have the same line of separation between them that virtue and vice have.

The general harmony of the physical world is maintained by a particular quality in each body, by which it attracts every thing to its own centre; it is exactly the same in the moral.

### MOON'S PHASES.

First Quarter, 8d day, 6h 10m M. | Last Quarter, 19th day, 1h 53m M.  
Full Moon, 11th day, 9h 48m M. | New Moon, 25th day, 5h 1m A.

D.	D. W.	CALENDAR, &c.	☉	●	R.	○	High water
D.	M.		R. & S.	& S.	S.	Plac.	h. m.
			h. m. h. h.	h. m.			
1	We	Lammas day. America disc.	4 46 8	10 29	reins		2 36
2	Th	[1498	4 49 8	10 57	sec.		3 22
3	Fri	Abd. of Charles X. 1830.	4 49 9	11 27	sec.		4 16
4	Sat	<i>Very warm.</i>	4 50 8	11 39	sec.		5 25
5	SU	7th Sunday after Trinity.	4 51 8	<i>Morn</i>	thig		6 42
6	Mo	Transfiguration of Christ.	4 53 8	0 35	thig		7 48
7	Tu	<i>Fine weather</i>	4 54 8	1 15	knee		8 49
9	We	George Canning died, 1927.	4 55 8	2 0	knee		9 36
9	Th	Louis Philip K. of France '90.	4 56 8	2 50	knee		10 16
10	Fri	St. Lawrence. <i>continues.</i>	4 57 9	3 44	legs		10 52
11	Sat	Bull's Eye rises, 11h. 50m.	4 58 8	Rises.	legs		11 27
12	SU	8th Sun after Trin. Louis	5 0 7	7 58	feet	<i>Morn</i>	
13	Mo	[XVI. deth. 1792	5 1 7	8 21	feet		0 1
14	Tu		5 3 7	8 49	feet		0 32
15	We	Bonaparte born, 1769.	5 4 7	9 14	head		1 4
16	Th	<i>Refreshing</i>	5 6 7	9 41	head		1 39
17	Fri		5 7 7	10 11	neck		2 17
18	Sat	Arcturus sets 11h. 41m.	5 8 7	10 44	neck		3 1
19	SU	8th Sunday after Trinity.	5 9 7	11 22	arms		3 58
20	Mo	<i>showers.</i>	5 11 7	<i>Morn</i>	arms		5 16
21	Tu	K. William IV. born, 1765.	5 12 7	0 10	brea.		6 50
22	We		5 13 7	1 4	brea		8 15
23	Th	Dr. Herschell died, 1822.	5 15 7	2 8	brea		9 21
24	Fri	St. Bartholomew. <i>Cloudy.</i>	5 16 7	3 19	hart		10 13
25	Sat	7 stars rise 9h. 40m.	5 17 7	<i>Sets.</i>	hart		10 59
26	SU	10th Sunday after Trinity.	5 19 7	7 32	belly		11 40
27	Mo	High tides.	5 20 7	8 4	belly	<i>ev</i>	18
28	Tu	St. Aug. <i>Thunder showers</i>	5 22 7	8 34	reins		0 55
29	We	St. John Baptist beheaded.	5 23 7	9 3	reins		1 32
30	Th	Low tides.	5 25 7	9 32	sec.		2 11
31	Fri	<i>about this time.</i>	5 27 7	10 4	sec.		2 53

S  
A man  
applaudin  
Who is  
self.—Ch  
We cor  
Virtue  
virtue is t

First Qu  
Full Moo

D.	D. W.
D.	M.
1	Sat
2	SU
3	Mo
4	Tu
5	We
6	Th
7	Fri
8	Sat
9	SU
10	Mo
11	Tu
12	We
13	Th
14	Fri
15	Sat
16	SU
17	Mo
18	Tu
19	We
20	Th
21	Fri
22	Sat
23	SU
24	Mo
25	Tu
26	We
27	Th
28	Fri
29	Sat
30	SU

# SEPTEMBER HATH XXX DAYS.

A man must be a fool indeed, if I think him one at the time he is applauding me.

Who is the true hero? He who has the most courage in resisting himself.—*Chinese.*

We confess our faults in the plural, and deny them in the singular.

Virtue pleases more as nature than as virtue; but let it be added, that virtue is the first beauty of nature.

## MOON'S PHASES.

First Quarter, 1st day, 8h 46m A. | Last Quarter, 17th day, 8h 55m M.  
Full Moon, 10th day, 0h 46m M. | New Moon, 24th day, 2h 16m M.

53m M.  
in A.

High  
water  
h. m.  
  
2 36  
3 22  
4 16  
5 25  
6 42  
7 48  
9 49  
9 56  
10 16  
10 52  
11 27  
Morn  
0 1  
0 32  
1 4  
1 39  
2 17  
3 1  
3 58  
5 16  
6 50  
8 15  
9 21  
10 13  
10 59  
1 40  
1 18  
0 55  
1 32  
2 11  
2 53

D. M.	D. W.	CALENDAR, &c.	☺		● R.		○ Plac.	High water h. m.
			h.	m.	h.	m.		
1	Sat	Giles.	5	28	7	10	38	thi. 3 44
2	SU	11th Sunday after Trinity.	5	30	7	11	19	thi. 4 50
3	Mo	Cromwell died, 1658. <i>Fine</i>	5	31	7	MORN		thi- 6 3
4	Tu		5	33	7	0	1	knee 7 20
5	We	Moon in apogee.	5	34	7	0	50	knee 8 24
6	Th	<i>seasonable weather.</i>	5	35	7	1	43	legs 9 15
7	Fri	[aide crowned, 1831.]	5	36	7	2	40	legs 9 57
8	Sat	King Wm. IV. and Q. Ade-	5	38	7	3	39	legs 10 34
9	SU	12th Sunday after Trinity.	5	39	7	4	42	feet 11 9
10	Mo	<i>Rain</i>	5	41	7	Rises		feet 11 42
11	Tu	<i>may be looked for.</i>	5	42	7	7	26	head Morn
12	We		5	44	7	7	52	head 0 14
13	Th	Gen. Wolfe killed.	5	45	7	8	22	neck 0 48
14	Fri	Holy Cross. Moscow burnt,	5	47	7	8	54	neck 1 24
15	Sat	Huskisson killed, 1830 [1812]	5	49	7	0	30	neck 2 3
16	SU	13th Sunday after Trinity.	5	50	7	10	13	arms 2 52
17	Mo	Lambert.	5	52	7	11	2	arms 3 51
18	Tu	Cap. of Quebec, 1759.	5	53	7	MORN		breas 5 13
19	We	<i>Pleasant.</i>	5	55	7	0		6 49
20	Th		5	56	7	1	9	hart. 8 12
21	Fri	Moon in perigee.	5	58	7	2	21	hart. 9 16
22	Sat		5	59	7	3	35	belly 10 4
23	SU	14th Sunday after Trinity.	6	1	6	4	50	belly 10 47
24	Mo	High tides. <i>Changeable.</i>	6	2	6	Sets.		reins 11 26
25	Tu		6	4	6	7	8	reins ev 1
26	We	St. Cyprian.	6	6	6	7	39	secr. 0 37
27	Th	<i>Settled and</i>	6	7	6	8	10	secr. 1 18
28	Fri	<i>agreeable weather.</i>	6	9	6	8	45	thig 1 51
29	Sat	St. Mich. Ld. Nelson b. 1758	6	10	6	9	22	thig 2 33
30	SU	15th Sun. af Trin. St. Jerome	6	12	6	10	14	thig 3 21

# OCTOBER HATH XXXI DAYS.

The desire to please often frustrates itself; but in this case the desire to please will generally be found to proceed rather from a selfish than a social motive.

Some men mistake talking about sense, for talking sense.

Some men are seldom out of humor, because they are seldom in humor.

### MOON'S PHASES.

First Quarter, 1st day, 2h 43m A.  
Full Moon, 9th day, 2h 39m A.  
Last Quarter, 16th day, 8h 35m A.

New Moon, 23d day, 1h 49m A.  
First Quarter, 31st day, 11h 5m M.

D.	D. W.	CALENDAR, &c.	☾		☉ R.		Plac.	High water h. m.
			R. & S. h. m.	h. m.	& sets h. m.	h. m.		
1	Mo	Remigius	6 13	6 10	51	knee	4 19	
2	Tu	Low tides. <i>Sudden changes</i>	6 15	6 11	42	knee	5 31	
3	We	Moon in apogee.	6 17	6	morn.	legs	6 49	
4	Th	<i>will take place</i>	6 18	6 0	39	legs	7 56	
5	Fri	Belgium indepen. 1930.	6 20	6 1	38	legs	8 51	
6	Sat		6 22	6 2	39	feet	9 37	
7	SU	16th Sunday after Trinity.	6 23	6 3	41	feet	10 14	
8	Mo	<i>about this time.</i>	6 24	6 4	45	head	10 50	
9	Tu	St. Denys.	6 26	6	rises.	head	11 25	
10	We		6 27	6 6	32	head	11 59	
11	Th	Lord Duncan's vict. 1797.	6 28	6 7	2	neck	morn.	
12	Fri	<i>Fair and fine.</i>	6 30	6 7	37	neck	0 35	
13	Sat	Jupiter south 10h. 10m.	6 31	6 8	19	arm	1 15	
14	SU	17th Sunday after Trinity.	6 33	6 9	12	arm	1 57	
15	Mo	<i>Slight frosts</i>	6 35	6 10	2	brex.	2 48	
16	Tu	Latimer burnt, 1553.	6 37	6 11	5	bre.	3 52	
17	We	Ethel.	6 38	6	morn.	hart.	5 15	
18	Th	St. Luke. <i>may be expected.</i>	6 40	6 0	14	hart.	6 46	
19	Fri		6 41	6 1	27	belly	8 3	
20	Sat	<i>Rain</i> [of Trafalgar, 1805]	6 42	6 2	39	belly	9 4	
21	SU	18th Sun after Trin. Battle	6 44	6 3	51	rein	9 51	
22	Mo		6 45	6 5	3	reins	10 30	
23	Tu	High tides. <i>at Pass Rain</i>	6 47	6	Sets.	reins	11 8	
24	We		6 48	6 6	13	secr.	11 42	
25	Th	Crispin. <i>Hard Frost.</i>	6 49	6 6	46	secr.	ev 18	
26	Fri	<i>haze ... and high winds.</i>	6 51	6 7	22	thi.	0 54	
27	Sat		6 52	6 8	2	thi.	1 31	
28	SU	12th Sunday after Trinity.	6 53	6 8	48	knee	2 12	
29	Mo	Jupiter south 9h.	6 55	6 9	38	knee	2 56	
30	Tu	Moon in apogee. Low tides.	6 56	6 10	31	knee	3 48	
31	We	Hallow Eve. <i>Clear.</i>	6 57	6 11		legs	4 51	

*Smiles glazes window. R. P.*

16. 90  
 17  
 18  
 19  
 20  
 22  
 24  
 25  
 27  
 31

desire than a

humor.

m A.  
5m M.

High  
water  
h. m.

4 19  
5 31  
6 49  
7 56  
8 51  
9 37  
10 14  
10 50  
11 25  
11 59

norm.

0 35  
1 15  
1 57  
2 49  
3 52  
5 15  
6 46  
8 37  
0 4  
9 51  
0 30  
1 8  
1 42  
1 18  
0 52  
1 31  
1 12  
2 56  
48  
51

*[Faint, illegible handwriting at the top of the page, possibly a title or header.]*

now.

16. Got 2 papers Old Countryman.

17. Louisa Reg. J. Park Editor.

18. ——— 25. Bank

19. ——— 14. Bank

20. — 11. ——— Rain

22. — 10. ———

24. — 12. ———

25. — 7. ——— finished

27. Sunday came about 8 o'clock

31. Reg. mat about 7 A.M.  
finished about 4 P.M.

1 Nov: Lummy began at 1/2 past  
 7. A. M. finished about 2. P. M. -

7th Nov: Snow.

12 Ice in the river and clear the 13

13. Horse ~~Shod~~. New lett.

15. River closed - crossing the 16th  
 Steam Boat frozen in at Bege

19. River opened & ice running  
 since

Saturday 17th Nov

River calved 29th Nov

Fire  
 Full  
 has

D. M. |

1  
 2  
 3  
 4  
 5  
 6  
 7  
 8  
 9  
 10  
 11  
 12  
 13  
 14  
 15  
 16  
 17  
 18  
 19  
 20  
 21  
 22  
 23  
 24  
 25  
 26  
 27  
 28  
 29  
 30  
 31

Dr

NE

We sometimes  
 deep, when p  
 feel in a less  
 Some men  
 deal of bad h  
 We need v  
 Complaint

Full Moon, &  
 Last Quarter

D. M.	D. W.	
1	Th	All
2	Fri	All
3	Sat	
4	SU	20th
5	Mo	Gu
6	Tu	Prin
7	We	
8	Th	Mil
9	Fri	
10	Sat	
11	SU	21st
12	Mo	
13	Tu	
14	We	Wa
15	Th	Ma
16	Fri	
17	Sat	Lo
18	SU	22nd
19	Mo	
20	Tu	
21	We	
22	Th	Qu
23	Fri	St
24	Sat	
25	SU	23rd
26	Mo	
27	Tu	
28	We	
29	Th	G
30	Fri	S

# NOVEMBER HATH XXX DAYS.

We sometimes think we have discovered a new truth that lay very deep, when perhaps we have only a lively sense of something which others feel in a less degree.

Some men do by their sense, as farmers by their corn,—pass off a good deal of bad by the help of a little good.

We need wisdom most when we deal with those who have least.

Complaint against fortune, is often a masked apology for indolence.

### MOON'S PHASES.

Full Moon, 8th day, 3h 29m M. | New Moon, 22d day, 4h 19m M.  
 Last Quarter, 14th day, 10h 52m M | First Quarter, 30th day, 8h 3m M.

D. M.	D. W.	CALENDAR, &c.	☾		☀		R. S. Piac.	High water		
			R. h.	S. m.	R. h.	S. m.		h.	m.	
1	Th	All Saints.	6	59	6	morn.	legs	6	3	
2	Fri	All Souls. <i>Mild</i>	7	1	5	0	28	feet	7	15
3	Sat	<i>and pleasant.</i>	7	2	5	1	30	feet	8	15
4	SU	20th Sunday after Trinity.	7	3	5	2	33	feet	9	5
5	Mo	Gunpowder Plot, 1605.	7	5	5	3	37	head	9	47
6	Tu	Princess Charlotte died, 1821	7	6	2	4	44	head	10	26
7	We	<i>Frost.</i>	7	7	5	5	52	neck	11	4
8	Th	Milton died, 1674.	7	8	5	rises.	neck	11	43	
9	Fri		7	9	5	6	17	arms	morn	
10	Sat	<i>Cold rain</i>	7	11	5	7	2	arms	0	23
11	SU	21st Sun. af. Trin. St. Mart.	7	12	5	7	57	bres.	1	5
12	Mo		7	14	5	8	58	bres.	1	52
13	Tu	<i>and disagreeable weather</i>	7	15	5	10	7	hart.	2	43
14	We	Warsaw taken, 1764.	7	16	5	11	17	hart.	3	44
15	Th	Machutus. <i>for some days</i>	7	17	5	morn	belly	4	58	
16	Fri					29	belly	6	19	
17	Sat	Lord Erskine d.					belly	7	35	
18	SU	22d Sunday						8	37	
19	Mo							9	25	
20	Tu							10	6	
21	We									
22	Th	Queen Charlotte								
23	Fri	St. Clement.								
24	Sat					5	6		30	
25	SU	23d Sunday after Trin.	7	28	5	7	23	knee	1	5
26	Mo	[Catherine.	7	29	5	8	16	knee	1	43
27	Tu	<i>Signs</i>	7	29	5	9	13	legs	2	23
28	We		7	30	5	10	11	legs	3	7
29	Th	Goldsmith born, 1731.	7	31	5	11	10	legs	3	57
30	Fri	St. Andrew. <i>of snow.</i>	7	32	5	morn	feet	4	58	

# DECEMBER HATH XXXI DAYS.

Disagreeable qualities are often heightened by restraint, as the power of a spring is increased by drawing it back.

As love will often make a wise-man act like a fool, so will interest of ten make a fool act like a wise man.

The senses feed sentiment, and sentiment the senses.

Many men would have more wisdom, if they had less wit.

## MOON'S PHASES.

Full Moon, 7th day, 3h 35m A. | New Moon, 21st day, 9h 51m A.  
 Last Quarter, 14th day, 7h 42m M. | First Quarter, 30th day, 3h 28m M

D.	D. W.	CALENDAR, &c.	☺ R. & S.		● R. & S.		Plac.	High water h. m.
			h. m.	h. m.	h. m.	h. m.		
1	Sat	Emp. Alexander died, 1925.	7	33	5	0	11 feet	6 5
2	SU	Advent Sunday. <i>Change-</i>	7	33	5	1	13 head	7 1
3	Mo		7	34	5	2	17 head	8 15
4	Tu	<i>able, with rain.</i>	7	35	5	3	23 neck	9 8
5	We		7	35	5	4	32 neck	9 53
6	Th	Nicholas.	7	36	5	5	43 neck	10 38
7	Fri	Marshal Ney shot, 1815.	7	37	5		rises arms	11 22
8	Sat	<i>Clear and cold.</i>	7	37	5	5	35 arms	morn.
9	SU	2d Sunday in Advent.	7	38	5	6	36 bres.	0 6
10	Mo		7	38	5	7	42 bres.	0 50
11	Tu	<i>Mild and pleasant.</i>	7	38	5	8	54 hart.	1 36
12	We		7	39	5	10	8 hart.	2 23
13	Th	Lucy.	7	39	5	11	19 belly	3 16
14	Fri	<i>Hail or snow.</i>	7	39	5		morn belly	4 14
15	Sat	7 stars south 10h.	7	40	5	0	31 reins	5 26
16	SU	3d Sunday in Advent.	7	40	5	1	39 reins	6 43
17	Mo	Bolivar	7	40	5	2	46 secr.	7 48
18	Tu		7	40	5	3	51 secr.	8 45
19	We		7	40	5	4	56 thi.	9 32
20	Th		7	40	5	5	57 thi.	10 12
21	Fri		7	40	5		sets thi.	10 50
			7	40	5	5	5 knee	11 26
			7	40	5	5	56 knee	ev 2
			7	40	5	6	51 legs	0 36
25	Tu	Christmas Day	7	40	5	7	48 legs	1 10
26	We	St. Stephen. <i>storm.</i>	7	40	5	8	47 legs	1 45
27	Th	St. John.	7	40	5	9	46 feet	2 21
28	Fri	Innocents.	7	39	5	10	46 feet	2 59
29	Sat	<i>Clear</i>	7	39	5	11	47 head	3 46
30	SU	1st Sunday after Christmas.	7	39	5		morn head	4 46
31	Mo	Silvester. <i>and moderatc.</i>	7	38	5	0	52 head	5 54

His Exc  
Bart.

/ Hor

William  
Isaac W  
Reveres

Charles  
Robert  
George  
Wm. F  
Honora  
John A  
George  
Honora

C  
Steph  
Charle  
John  
John

Co  
James  
Batri  
Geor  
Thom

K  
John  
John

S.  
the power  
interest of

## Province of New-Brunswick.

His Excellency MAJOR-GENERAL, SIR ARCHIBALD CAMPBELL,  
Bart. G. C. B., Lieutenant-Governor and Commander-in-Chief of  
the Province of New-Brunswick, &c. &c. &c.

### HIS MAJESTY'S COUNCIL.

- |   |   |
|---|---|
| <p>1 Hon. John Saunders, <i>President</i>,<br/>         2 Lord Bishop of Nova-Scotia,<br/>         3 John M. Bliss,<br/>         4 William Black,<br/>         5 George Shore,<br/>         6 Thomas Baillie,</p> | <p>7 Hon. William Botsford,<br/>         8 Ward Chipman,<br/>         9 Saml. Proudfoot Hurd,<br/>         10 Harry Peters,<br/>         11 Frederick P. Robinson,<br/>         12 Richard Simonds.</p> |
|---|---|

### Officers of the Legislative Council.

- William F. Odell, Esquire, *Clerk*.  
 Isaac W. Jouett, Esq, *Sergeant at Arms and Usher of the Black Rod*.  
 Reverend George Coster, M. A., *Chaplain*.

### Principal Officers of Government.

- Charles J. Peters, Esquire, *Attorney General*.  
 Robert Parker, Esquire, *Solicitor General*.  
 George F. Street, Esquire, *Advocate General*.  
 Wm. F. Odell, Esq, *Secretary, Register, and Clerk of the Council*.  
 Honorable Thomas Baillie, *Commissioner of Crown Lands and Sur-*  
 John A. Beckwith, Esquire, *Acting do. do.* [*veyor General*.]  
 George P. Bliss, Esquire, *Receiver General*.  
 Honorable Frederick P. Robinson, *Acting Auditor General*.

## HOUSE OF ASSEMBLY.

William Crane, Esquire, *Speaker*.

- |  |  |
|--|--|
| <p><i>County of Saint John.</i><br/>         Stephen Lambert, }<br/>         Charles Simonds, } <i>Esquires.</i><br/>         John R. Partelow, }<br/>         John Ward, junr. }</p> <p><i>County of Charlotte.</i><br/>         James Brown, jun. }<br/>         Patrick Clinch, } <i>Esquires.</i><br/>         George S. Hill, }<br/>         Thomas Wyer, }</p> <p><i>King's County.</i><br/>         John Humbert, } <i>Esquires.</i><br/>         John C. Vail, }</p> | <p><i>County of York.</i><br/>         John Allen, }<br/>         Jedediah Slason, } <i>Esquires.</i><br/>         John Dow, }<br/>         William Taylor, }</p> <p><i>County of Westmorland.</i><br/>         Edward B. Chandler, }<br/>         William Crane, } <i>Esquires.</i><br/>         Rufus Smith, }<br/>         Robert Scott, }</p> <p><i>Queen's County.</i><br/>         Thomas Gilbert, } <i>Esquires.</i><br/>         Charles Harrison, }</p> |
|--|--|

51m A.  
3h 28m M  
High water  
h. m.  
6 5  
7 1  
8 15  
9 8  
9 53  
10 38  
11 22  
morn.  
0 6  
0 50  
1 36  
2 23  
3 16  
4 14  
5 26  
6 43  
7 48  
8 47  
9 32  
10 12  
10 50  
11 26  
ev 2  
0 36  
1 10  
1 45  
2 21  
2 59  
3 46  
4 46  
5 54



*County of Sunbury.*

George Hayward, }  
Thomas O. Miles, } Esquires.

*County of Kent.*

John W. Weldon, Esquire.

*County of Northumberland.*

Alexander Rankin, }  
Joseph Cunard, } Esquires.

*County of Gloucester.*

William End, Esquire.

*City of Saint John.*

Thomas Barlow, }  
William B. Kinnear, } Esquires.

*Officers of the House of Assembly.*

Charles P. Wetmore, Esquire, Clerk.  
Mr. Thomas S. Wetmore, Clerk Assistant.  
Henry G. Clopper, Esquire, Sergeant at Arms.  
Reverend James Somerville, Chaplain.

**COURT OF CHANCERY.**

His Excellency the Lieutenant-Governor, *Chancellor.*

The Chief Justice, and the Judges of the Supreme Court, *Assessors of the Court.*

Wm. F. Odell, Esq. Clerk of the Crown in Chancery.

Neville Parker, Esquire }  
George F. Street, Esquire } Masters.

Henry Swymer, Esquire }  
Daniel Ludlow Robinson, Esquire, Register.

*The Court of Governor and Council for hearing and determining Causes relating to Marriage and Divorce.*

His Excellency the Lieutenant-Governor and the Honorable His Majesty's Council.

Henry G. Clopper, Esquire, Clerk.

Terms—*The first Tuesdays in February and July.*

**SUPREME COURT OF JUDICATURE.**

Chief Justice—Honorable John Saunders, 19th Oct. 1822.

Justices,— { " John M. Bliss, 9th July, 1816.  
" William Botsford, 2d April, 1823.  
" Ward Chipman, 17th March, 1825.

Charles S. Putnam, Esquire, Clerk of the Crown.

Honorable George Shore, Clerk of the Pleas.

John T. Murray, Esq. Clerk of the Circuits; and Clerk of the Crown on the Circuits.

Terms—*The first Tuesdays in February and May, and the Second Tuesdays in July and October.*

CO  
Ro  
Go  
W  
TH  
  
COU

*Frederic*  
Saunders, C  
J. Dibblee,  
Geo. F. S.  
Fisher, Esc

*Saint Jo*  
mer, John T  
ters, jun. F  
Wright, Ro  
L. Hazen,  
and George

*Saint A*  
nam, Samu

*Miramie*  
John Lobba

*Dorches*  
Smith Sayn

*Non-res*  
Alexander

*St. Step*  
Gage T

*Saint G*

*Richibu*

*Kingsto*

*Sunbury*

*Woodst*  
rill Hazen,

*Bay Ch*

W F Odell  
Harris Ha  
Robert Pa  
John A St  
Neville Pa  
Charles S.  
Daniel L F

## COURT OF VICE ADMIRALTY.

Robert Parker, Esquire, Judge and Commissary.  
 George F. Street, Esquire, Advocate General.  
 William Tyng Peters, Esquire, Registrar and Scribe.  
 Thomas M. Hazen, Esquire, Marshal.

## COUNSELLORS AND ATTORNIES, PRACTISING IN THE PROVINCE.

*Frederiston.*—Charles J. Peters, (Attorney General,) John Simcoe Saunders, G. F. Street, George P. Bliss, Daniel Ludlow Robinson, Geo. J. Dibbloe, Charles S. Putnam, A. K. S. Wetmore, C. P. Wetmore, Geo. F. S. Berton, A. L. Wilnot, Daniel Hailes Smith, and Charles Fisher, Esquires.

*Saint John.*—William Tyng Peters, Robert Parker, Henry Swymer, John Thomas Murray, W. B. Kinnear, Neville Parker, James Peters, jun. Francis A. Kinnear, Robert F. Hazen, Le Baron Hazen, Wm. Wright, Robert Robertson, jun. H. N. H. Lugin, M. H. Perley, Robt. L. Hazen, Richard Sands, jun. John Johnston, James William Boyd, and George Wheeler, Esquires.

*Saint Andrews.*—Harris Hatch, Alfred L. Street, Francis E. Putnam, Samuel H. Whitlock, and Thomas Chandler, Esquires.

*Miramichi.*—Thomas H. Peters, John Ambrose S. Street, W. End John Lobban, Wm. Carman, jun. Richard Hill, and Geo Kerr, Esquires.

*Dorchester.*—E. B. Chandler, James Stewart, Charles Botsford, Jas Smith Sayre, and Wm Wiley, Esquires.

*Non-residents practising in Westmorland.*—James S. Morse, and Alexander Stewart, Esquires.

*St. Stephens.*—G. S. Hill, P. Stubs, jun. and R. S. Mowatt, Esqrs.

*Gage Town.*—T. R. Wetmore, Esquire.

*Saint George.*—Samuel G. Andrews, Esquire.

*Richibucto.*—John W. Weldon, and Wm. Chandler, Esquires.

*Kingston.*—William Simpson, and Thomas S. Sayre, Esquires.

*Sunbury.*—George W. Cleary, Esquire.

*Woodstock.*—E. B. Smith, John M. Robinson, and Nathaniel Merrill Hazen, Esquires.

*Bay Chaleur.*—Andrew Barbaric, R. H. Peters, & R. Carman, Esqrs.

## PUBLIC NOTARIES.

W F Odell, Esq. in the Province.	H. Swymer, Esq. in the Province.
Harris Hatch, Esq do	George W Cleary, Esq do
Robert Parker, Esq do	Francis A Kinnear, Esq do
John A Street, Esq do	Alfred L Street, Esq do
Neville Parker, Esq do	A K S Wetmore, Esq do
Charles S. Putnam, Esq do	C R Hatheway, Esq do
Daniel L Robinson, Esq do	Robert F Hazen, Esq do

Wm. Wright, Esq in the Province.	CJ Peters, Esq in the city of St John
Le Baron Hazen, Esq do	Wm Tyng Peters, Esq do
William Carinan, jr. Esq do	William B Kinnear, Esq do
Francis E Putnam, Esq do	James Peters, jun. Esq do
P. Stubs, jun. Esq. do	H N H Lugin, Esq in the City and
Moses H Perley, Esq do	County of Saint John.
Robert H Peters, Esq do	T H Peters, Esq in Northumberland,
John Johnston, Esq do	John W Weldon, Esq do
James William Boyd, Esq. do	Sylvester C Hewes, Esq do
Richard Sands, jun. Esq do	Colin Campbell, Esq in Charlotte.
George Wheeler, Esq. do	C. H. Jouett, Esq. West Isles, &c.

*Court for the Probate of Wills and Granting Administrations.*

William F Odell, Register for the Province.

*Surrogates and Registers.*

George F. Street, Esquire, Surrogate, York,	
Henry Swymmer, Esquire, Surrogate,	} Saint John,
Charles Drury, Esquire, Deputy Register,	
Edward B. Chandler, Esquire, Surrogate,	} Westmorland.
Marmaduke L. Backhouse, Esq. Deputy Register,	
Harris Hatch, Esquire, Surrogate,	} Charlotte.
Colin Campbell, Esq. Deputy Register,	
Henry Nase, Esq. Surrogate and Deputy Register for King's County.	
N. H. DeVeber, Esquire, Surrogate,	} Queen's County,
Valentine H. Peters, Esq. Deputy Register,	
George W. Cleary, Esquire, Surrogate,	} Sunbury,
N. Hubbard, Esquire, Deputy Register,	
Thomas H. Peters, Esquire, Surrogate,	} Northumberland.
J. A. S. Street, Esquire, Deputy Register,	
William Chandler, Esquire, Surrogate,	} Kent.
George Pagan, Esquire, Deputy Register,	
William End, Esquire, Surrogate,	} Gloucester.
Hugh Munro, Esquire, Deputy Register,	

**HIS MAJESTY'S CUSTOMS.**

*Port of Saint John.*

Henry Bowyer Smith, Esquire, Collector,  
 Herbert Cornewall, Esquire, Comptroller,  
 George Hamilton Smith, Esquire, Waiter and Searcher,  
 James Walker, Esquire, Waiter and Searcher.

Charles Drury, jun. Esquire, Admeasurer of ships and vessels.  
 Mr. John Longmaid, Tide Surveyor.

Wm. Ha  
Perry Du

Alex  
Mr.

John  
Geo  
Geo

J. M  
J. S

E. F. Ste  
a  
T. Arms  
Mr. J

J. L  
Mr.

H G Clo  
B Robin  
C H Jou  
T H Pet  
M L Ba  
J W W

Benjami

Dav  
G R  
Wr  
Job  
Ste  
Co  
Wi

**SUB-COLLECTORS.**

Wm. Hannington, Esq. *Chediac.* | James Sayre, Esq. *Dorchester.*  
Perry Dumaresq, Esq. *Dalhousie.* | David Swayne, Esq. *Liverpool.*

**Warehouse Department.**

Alexander Grant, Esquire, Warehouse Keeper at Saint John.  
Mr. Edward Marter, Locker at ditto.

**Port of Miramichi.**

John Wright, Esquire, Collector,  
George Pinchin, Esquire, Comptroller,  
George Henderson, jun. Esquire, Admeasurer of vessels.

**Port of Saint Andrews.**

J. M. Spearman, Esquire, Collector.  
J. Saunders, Esquire, Comptroller.  
— Richmond, Esquire, Waiter and Searcher.

**SUB-COLLECTORS.**

E. F. Stewart Esquire, *West Isles and Campo Bello.* | A. J. Wetmore, Esq. *St. George.*  
T. Armstrong, Esq. *St. Stephen.* | Wm. Frankland, Esquire, *Grand Manan.*  
Mr. Joseph Baxter, Preventive Officer of His Majesty's Customs.

**Warehouse Department.**

J. L. Hailry, Esquire, Acting Warehouse Keeper,  
Mr. Douglas B. Clark, Locker.

**PROVINCIAL REVENUE.**

Honorable Richard Simonds, Province Treasurer.

**DEPUTY-TREASURERS.**

H G Clopper, Esq *Fredericton,* | Wm. Hannington, Esq *Chediac,*  
B Robinson, Esq *Saint Andrews.* | Dugald Stewart, Esq *Restigouche,*  
C H Jouett, Esquire, *West Isles,* | John Miller, Esq *Bathurst.*  
T H Peters, Esquire, *Miramichi.* | Bill Chappell, Esq *Bay Verte,*  
M L Backhouse, Esq *Sackville.* | William Wiley, Esq *Peticodiac.*  
J W Weldon, Esq *Richibucto,* | Jas. Ketchum, Esq. *Woodstock.*

Benjamin C. Chaloner, Esquire, Gauger of Dutiable Articles and Tide Surveyor at the Port of Saint John.

David W Jack, Esq do do at Saint Andrews.

G Henderson, jun. Esq do do at Miramichi.

Wm Payne, Provincial Tide Surveyor at Fredericton.

John Abram, Provincial Tide Waiter at Saint John.

Stephen Humbert, Esq. special do do ditto.

Cornelius VanHorne, }  
William Roberts, } Tide Waiters Charlotte County.

## Collectors of Duties on Horses and Cattle.

Robert Watson, *St. Stephen,*  
 James Upham, *Woodstock,*  
 Benjamin Reed, *Douglas,*  
 Michael O'Connor, *Oromocto,*

Oliver Bradley, *Fredericton, St. Mary's, & Ludlow,*  
 Richard M'Laughlin, *Gloucester.*

## University of King's College—Fredericton.

Patron—THE KING.

*Chancellor*—His Excellency the Lieutenant-Governor of the Province.

*Visitor*—The Right Reverend the Lord Bishop of the Diocese.

*President*—The Venerable the Archdeacon of the Province.

*Vice President*—(*Resident and Acting Principal.*)—The Reverend  
 Edwin Jacob, D. D.

*Professors.* { Reverend Edwin Jacob, D. D.  
 Reverend James Somerville, L. L. D.  
 Reverend George M'Auley, A. M.

### COUNCIL.

His Excellency the Chancellor,	The Chief Justice,
The President,	Judge Botsford,
The Vice President,	Speaker of the House of Assembly,
The Professors.	Secretary of the Province.

*Registrar*—George Frederick Street, Esquire.

## The Governor and Trustees of the Madras School in New Brunswick:

The Lieutenant-Governor or Commander-in-Chief for the time being.  
 The Lord Bishop of the Diocese,      The Chief Justice, [Court,]  
 The Members of His Majesty's Council (not being Judges of the Supreme  
 The Speaker of the House of Assembly,      The Judge of the Admiralty,  
 The Mayor and Recorder of Saint John,  
 The Ecclesiastical Commissary of the Province,  
 The Rector and Church Wardens of Trinity Church in St. John;  
 Together with  
 The Honorable Edward J. Jarvis, and Wm. Scovil, Esquire.

Robert F. Hazen, Esquire, *Treasurer.*  
 James William Boyd, Esquire, *Secretary.*

## Public Grammar School in the City of Saint John.

The Reverend the Rector of Saint John, *President.*

### DIRECTORS.

The Mayor.	The Recorder.	Thomas Paddock, Esquire,
The Honorable Ward Chipman.	Reverend I. W. D. Gray,	
Robert Parker, Esquire.	Neville Parker, Esquire.	

—————  
*Treasurer and Clerk.*

Mr. James Paterson, *Master.*  
 Mr. William Ewing, *English Assistant.*

 T  
W  
N  
G  
H  
D  
  
Z  
  
H  
  
  
  
Jd

 St. Jo  
  
  
  
  
Sain  
  
Re  
Ho  
W  
Za  
Re  
Mr  
  
Teams  
ally.  
\* \* The  
& Ed  
  
  
Hi  
Joh  
Ch  
Joh  
W  
Ale  
Mr  
\* \* \* De  
  
Lad  
Mrs. N  
Mrs. F  
Miss W  
  
T. Arm  
Aaron  
Mr. Da

**Public Grammar School in Saint Andrews.**

Reverend Jerome Alley, *President.*

**DIRECTORS.**

Colin Campbell, Esquire, Thomas Wyer, Esquire,  
David W. Jack, Esquire, Dr. S. Frye.  
Reverend John Cassell, *Master.*



**St. John Church of England Sunday School Society.**

*Patron*—His Excellency the Lieutenant-Governor,  
*President*—The Rector of Saint John,  
*Superintendent and Secretary*—The Curate of St. John.  
*Directors*—The Church Wardens.



**Saint John District Committee of the Society for Promoting Christian Knowledge.**

His Excellency the Lieutenant-Governor, *Patron,*  
Reverend Benjamin G. Gray, D. D. *President,*  
Hon. William Black, } *Vice Presidents.*  
William Scovil, Esq. }  
Zalmon Wheeler, Esq. *Treasurer.*  
Rev. I. W. D. Gray, *Secretary.*  
Mr. A. R. Truro, *Assistant Secretary.*

*Terms of Admission.*—One Guinea donation, and one Guinea annually.—Recommendation from a member of the society.

\*\* The Depository of Books and Tracts is the Store of Messrs. Geo. & Edward Sears, King-street.



**New-Brunswick Auxiliary Bible Society.**

His Excellency the Lieutenant-Governor, *Patron,*  
John M. Wilmot, Esquire, *President,*  
Charles J. Peters, } *Esquires, Vice-Presidents.*  
John Ferguson, }  
William B. Kinnear, }

Alexander M. Leod, Esquire, *Treasurer.*  
Mr. James Paterson, Rector of the Grammar School, *Secretary.*

\*\* Depository—Store of Mr. L. H. Deveber, Prince William-street.

**BRANCH SOCIETIES.**

**Ladies' Bible Association.**

Mrs. Neville Parker, *President,*  
Mrs. Ferguson, *Treasurer,*  
Miss Wiggins, *Secretary.*

**St. Stephen.**

President,  
T. Armstrong, Esq. *Vice President,*  
Aaron Upton, Esq. *Treasurer,*  
Mr. David A. Rose, *Secretary.*

**Grand Lake.**

Mr. John Robertson, *President,*  
Gershom Clark, *Vice President.*  
David Palmer, *Treasurer,*  
John Palmer, *Secretary.*

**Sussex Vale.**

George Morton, Esq. *President,*  
A. C. Evanson, Esq. *V. President,*  
Mr. Joseph R. Leggett, *Secretary.*

*Fredericton Auxiliary Bible Society.*

William Taylor, Esq. President,  
Peter Fisher, Esq. Treasurer, James Taylor, Jun. Esq. Secretary.

*Miramichi Ladies' Bible Society.*

Mrs. Peabody, President,  
Mrs. Clarke, Treasurer, Mrs. Thomas, Secretary.

*Auxiliary Gospel Tract Society.*

John M. Wilmot, Esquire, *President.*  
Mr. James Paterson, *Secretary and Treasurer.*

*Committee* :—Messrs. Thomas Pettingell, A. Lawrence, C. Gibb,  
William Ewing, George Garrison, and Zebulon Easty.

All applications for Tracts to be made to the Secretary, either  
directly, or through the medium of the members.

*Provincial Vaccine Establishment of New Brunswick.*

CENTRAL STATION—SAINT JOHN.

His Excellency the Lieutenant Governor, and His Majesty's Council,  
Patrons of the Institution,

Honorable William Black, } Directors of the Institution,

COMMITTEE :

*Fredericton*—Rev. James Somerville, and William F. Odell, Esquire.  
*St. Andrews*—Reverend Jerome Alley.

VACCINATING SURGEONS.

*Saint John*—John Boyd, Esquire, M. D.  
*Fredericton*—The Medical Officer in charge of the Troops.  
*St. Andrews*—The Medical Officer in charge of the Troops.

*Provincial Marine Hospital for the relief of sick and disabled Seamen.*

COMMISSIONERS :

Honorable William Black, Ralph M. Jarvis, Esquire,  
Thomas Heaviside, Esquire, William Scovil, Esquire,  
John Ward, junior, Esquire.  
John Boyd, Esquire, M. D. Physician and Surgeon.

*Marine Hospital—Saint Andrews.*

Harris Hatch, Esquire,  
William Ker, Esquire, } Commissioners.  
David W. Jack, Esquire,  
S. Frye, Esquire, M. D. Physician.

*Commissioners for Light-houses in the Bay of Fundy.*

Charles Simonds, }  
Robert W. Crookshank, } } Thomas Barlow,  
Allen Otty, } } and  
} } John Ward, junior,

*Commissioners for Light-houses in Charlotte County.*

James Allanshaw, James Campbell, and John Wilson, Esquires.

**BANK OF NEW-BRUNSWICK.**

Henry Gilbert, Esquire, *President.*

*DIRECTORS:*

Thomas Barlow, }  
Hon. Ward Chipman, } } Esquires. { Solomon Nichols,  
R. W. Crookshank, } } { Neville Parker,  
Noah Disbrow, } } { William Scovil,  
Hugh Johnston, } } { Charles Simonds,  
Nehemiah Merritt, } } { Benjamin Smith,  
} } { Stephen Wiggins.

Zalmon Wheeler, Esquire, *Cashier*  
Neville Parker, Esquire, *Solicitor*

**CHARLOTTE COUNTY BANK.**

Harris Hatch, Esquire, *President.*

*DIRECTORS:*

Thomas Wyer, }  
James Campbell, } } Esquires. { John Wilson,  
James Rait, } } { John M'Lauchlan,  
John M'Master, } } { John M'Alister,  
} } { James Douglas,

Peter Stubs, Esquire, *Cashier.*

**CITY OF ST. JOHN SAVINGS' BANK.**

His Excellency the Lieutenant Governor, *Patron.*

Thomas Heavyside, Esquire, *President,*

Honorable William Black, }  
" Judge Chipman, } } *Vice Presidents,*

Hugh Johnston, Esquire, }

The Bank of New Brunswick, *Treasurer.*

\_\_\_\_\_, *Cashier and Register.*

**FREDERICTON SAVINGS' BANK.**

His Excellency the Lieutenant Governor, *Patron.*

His Honor the Chief Justice, *President.*

Peter Fraser, Esquire, *Vice President,*

James Taylor, senior, Esquire, *Treasurer,*

Henry G. Clopper, Esquire, *Secretary,*

Mr. John F. Taylor, *Cashier and Register.*



**Charlotte County Savings' Bank.**

Thomas Wyer, Esquire, *President.*

Peter Stubs, Esquire, *Cashier.*

*Committee*:—H. Hatch, S. Frye, E. Andrews, J. M'Master, P. Stubs, J. Parkinson, W. Ker, and J. M'Lauchlan, Esquires.

**SAINT JOHN MARINE INSURANCE COMPANY.**

John Ward, junior, Esquire, *President.*

**DIRECTORS.**

Thomas Barlow,	} Esquires,	Isaac L. Bedell,
Craven Calverley,		James Kirk,
Robert W. Crookshank,		William Jarvis,
Thomas T. Hanford,		George D. Robinson,
David Hatfield,		John V. Thurgar,
Charles Hazen,		Stephen Wiggins,
		Thomas Heaviside, Esquire, <i>Secretary.</i>
		William B. Kinnear, Esquire, <i>Solicitor.</i>

**NEW-BRUNSWICK FIRE INSURANCE COMPANY.**

Charles Simonds, Esquire, *President.*

**DIRECTORS :**

David Hatfield,	} Esquires,	Lauchlan Donaldson,
James Hendricks,		Robert F. Hazen,
John M. Wilmot,		Ralph M. Jarvis,
John Boyd, M. D.		Elisha DeW Ratchford,
John Kerr,		Benjamin Smith,
John Hammond,		John Kinnear.

Robert F. Hazen, Esquire, *Solicitor.*

Daniel Jordan, Esquire, *Secretary.*

**New-Brunswick Agricultural and Emigrant Society.**

His Excellency the Lieutenant-Governor, *Patron.*

The Honorable Chief Justice Saunders, *President.*

The Honorable Judge Bliss, } *Vice-Presidents.*

„ Judge Botsford, }

„ Judge Chipman, }

„ Samuel Proudfoot Hurd, }

„ Frederick P. Robinson, }

„ Harry Peters, }

„ Richard Simonds, }

*Members of the  
Central  
Committee.*

Peter Fraser, James Miles, }

Richard Ketchum, John Allen, }

William Crane, Samuel Freeze, }

Thomas Wyer, Thomas O. Miles, }

Hugh Munro, John W. Weldon, }

William Taylor, *Secretary and Treasurer.*

**Provincial Agent for Emigrants—**

Alexander Wedderburn, Esquire.

er, P.

Y.

society.

s of the  
tral  
millec.

*[Faint, illegible text, possibly bleed-through from the reverse side of the page]*



## CLERGY OF THE ESTABLISHED CHURCH.

The Right Rev. JOHN, Lord Bishop of Nova-Scotia, exercising, by His Majesty's Letters Patent, Episcopal Jurisdiction over the Province.

Venerable George Coster, M. A. *Archdeacon*

Rev. Benjamin G. Gray, D. D. Rector of Saint John.  
 Rev. William Gray, Assistant Missionary at Saint John,  
 Rev. Frederick Coster, Rector of Carleton,  
 Rev. George Coster, M. A. Rector of Fredericton, **X**  
 Rev. Edwin Jacob, D. D. Rector of St. Mary's.  
 Rev. Abraham Wood, Rector of Waterborough,  
 Rev. Jerome Alley, Rector of Saint Andrews.  
 Rev. Skeffington Thompson, L. L. D. Rector of St. Stephen.  
 Rev. James Somerville, L. L. D. Rector of Douglas.  
 Rev. Raper Milner, Rector of Maugerville,  
 Rev. Samuel D. L. Street, Rector of Woodstock,  
 Rev. Samuel R. Clarke, Rector of Gegetown,  
 Rev. Oliver Arnold, Rector of Sussex.  
 Rev. Nelson Arnold, Assistant Missionary at Sussex,  
 Rev. Elias Scovil, Rector of Kingston,  
 Rev. Christopher Milner, Rector of Sackville.  
 Rev. Gilbert L. Wiggins, Rector of Westfield,  
 Rev. Samuel Bacon, Rector of Miramichi,  
 Rev. Archibald Gray, Assistant Missionary at ditto.  
 Rev. Samuel Thomson, Rector of Saint George,  
 Rev. William W. Walker, Rector of Hampton,  
 Rev. Alexander C. Somerville, Rector of Bathurst,  
 Rev. Addington Parker, Rector of Prince William,  
 Rev. Richard Wiggins, Minister at Westmorland,  
 Rev. George S. Jarvis, Rector of Hampstead,  
 Rev. Edwin Arnold, Rector of Shediac,  
 Rev. George M<sup>c</sup>Cawley, Occasional Visiting Missionary.



### *Established Church of Scotland.*

*Saint John*— (Vacant.)  
*Saint Andrews*—Reverend Alexander M'Lean.  
*Miramichi* } *New Castle*—Rev. James Souter, A M  
 } *Chatham*—Rev. W. G. Johnston.  
*Fredericton*— (Vacant.)



### *Baptist Ministers in New Brunswick.*

<p> <i>Fredericton</i>—  <i>Waterborough</i>—Rev. J. Masters,  <i>Saint John</i>—Rev. J. G. Naylor,  <i>Prince Wm.</i>—Rev. L. Hammond,  <i>Norton &amp; U. Hampton</i>—Rev. S              Bencroft,              Rev. Benjamin Coy,  <i>Miramichi</i>—Rev. James Towzer,       </p>	<p> <i>Hopewell</i>—Rev. N. Cleaveland,  <i>Wickham</i>—Rev. Charles Lewis,  <i>Dorchester</i>—Rev. Wm. Sears,  <i>Salisbury</i>—Rev. Jos. Crandall,  <i>Sackville</i>—Rev. Robert Davis,  <i>L. Hampton</i>—Rev. D. Crandal,  <i>Sussex Vale</i>—Rev. Titus Stone.       </p>
---	--

## Roman Catholic Clergy.

*Saint John*—Rev. John Carroll, *Caraquet*—Mr. Fortier,  
*Fredericton*—Mr. McSweeney, *Memramcook*—Mr. Gauvreau,  
*Miramichi*—Mr. Dollard, *Chediac*—Mr. Gagnon,  
*St. Adreus*—Mr. Cummins, *Madawaska*—Mr. Sirois,  
*Richibucto*—Mr. Tetrau, *Chimigoui*—Mr. Paquet,  
*Nipisiguit*—Mr. Naud, *Village of Sauvages*—Mr. Belleau.

## Wesleyan Missionaries—New-Brunswick District.

*St John*—Reverend John B. Strong, A. Desbrisay, and G. Johnson.  
*Federicton and Sheffield*—Reverend S. Busby and R. Douglas.  
*St. Andrews*—Reverend Richard Williams.  
*St. Stephens*—Reverend Henry Daniél.  
*Westmorland*—Reverend William Smithson, and A. W. M'Leod.  
*Sussex Vale*—Rev. J. F. Bent. *Peticodiac*—Rev. Wm. Murray.  
*Miramichi*—Reverend Enoch Wood, and Arthur M'Nutt.  
*Annapolis*—Reverend Michael Pickles, and Samuel Joll.

## COMMISSIONERS FOR SOLEMNIZING MARRIAGE.

### County of York.

J. A. MacLaughlan, John Allen,  
 Jacob Elligood, Daniel Morehouse,  
 Richard Ketchum, Geo. Morehouse,  
 Joshua Brown, John Robinson, Jas.  
 Harrison, and A. B. Walsh, Esqrs.

### County of Sunbury.

David Burpe, T. O. Miles, John  
 Hazen, & Stephen Peabody, Esqrs.

### County of Westmorland.

Rufus Smith, John Keilor, William  
 Crane, William Scott, William  
 Hannington, William Chapman, and  
 Bill Chapel, Esquires.

### County of Northumberland.

Wm. Abrams, Alexander Good-  
 fellow, Donald M'Kay, Robt. Doak,  
 and John Campbell, Esquires.

### County of Charlotte.

Hugh M'Kay, Tristram Moore,  
 James Allanshaw, James Chaffey,  
 T. Wyer, and P. M'Callum, Esqrs.

### King's County.

Henry Nase, David B. Wetmore,  
 William M'Leod, Henry A. Scovil,  
 John C. Vail, Joshua Upham, Isaac  
 Perry, and James Brittain, Esqrs.

### Queen's County.

Samuel Scovil, Harry Peters,  
 John Colwell, Stephen Golding,  
 William Foshay, Thomas Under-  
 hill, Thomas T. Hewlett, John  
 Earle, and John Humphrey, Esqrs.

### City and County of Saint John.

Gehardus C. Carman, John Jordan,  
 and James Moran, Esquires.

### County of Kent.

John Wheaton, John Jardine,  
 John Bowser, and William Han-  
 nington, junior, Esquires.

### County of Gloucester.

Hugh Munro, Perry Dumaresq,  
 Robert Ferguson, John Young, and  
 James Blackhall, Esquires.

## Holidays at the Public Offices.

1st January, New Year's Day

2d ditto

17th March, Saint Patrick

23d April, Saint George

29th May, King Charles

24th June, Saint John

21st August, King Wm. IV. born

King's Coronation.

29th September, Michaelmas

11th October

30th November, Saint Andrew

25th December, Christmas Day

26th do.

27th do.

Ash Wednesday Good Friday

Easter Monday Easter Tuesday

} Christmas

} Holidays

au,

Belleau.

istrict.

hanson.  
is.

ood.  
Murray.

RIAGE.

Wetmore,  
A. Scovil,  
am, Isaac  
u, Esqr's.

y Peters,  
Golding,  
as Under-  
lett, John  
rey, Esqrs.  
aint John.

John Jor-  
Esquires.

at.  
an Jardine,  
William Han-  
s.

ester.  
Dumaresq,  
Young, and  
ires.

elmas

Andrew  
mas Day  
Christmas  
Holidays  
Friday  
r Tuesday

S  
F  
M  
S  
R  
N

S  
F  
S  
S  
N  
S  
M  
A

C

J  
R  
J  
H

H

a  
H  
H

fe  
a

J  
T

1  
2  
1  
2  
2  
2  
2  
R

x Charles Lisher

John A  
Justices o  
John A  
ments, Jo  
Richard K  
son, Thom  
house, Jos  
Jacob All  
Campbell,  
let, F Ric  
the Peace  
Henry C  
and Inferi  
Henry C  
William  
Coroners.  
Charles  
son, G J I  
S Berton,  
Charles F  
Morehouse  
preme Cou  
William  
E Beckwi

Hugh M  
Allanshaw  
Hugh M  
Allanshaw  
Frankland  
Clinch, C  
Jones, Sa  
son, Cadv  
Justices o  
Harris  
and Inferi  
Harris  
Donald  
David  
The Ju  
N Clarke  
Mowatt,  
Chandler  
Affidavit  
together  
lock, Esc  
Colin  
Hathewa

## County of York.

John Allen, Peter Fraser, Thomas C Lee, and John Robinson, Esqrs.  
Justices of the Inferior Court of Common Pleas.

John Allen, Peter Fraser, Thomas C Lee, John Robinson, Peter Clements, John Bedell, Jacob Ellegood, Daniel Morehouse, Henry Smith, Richard Ketchum, James Upham, James A M'Laughlan, Thomas Emerson, Thomas Jones, Jedediah Slason, George Minchen, George Morehouse, Josiah Brown, John Dibblee, James Harrisor, Simon Hammond, Jacob Allen, Wm Robinson, Wm Wilmot, Wm Davidson, Patrick Campbell, James Miles, John Dow, Adam Sharp, A B Walsh, W Hallet, F Rice, (*of the Quorum*) and Ross Curry, Esquires, Justices of the Peace. Edward W Miller, Esquire, High Sheriff.

Henry G Clopper, Esq. Keeper of the Rolls and Clerk of the Peace and Inferior Court of Common Pleas.

Henry G Clopper, Esquire, Register of Deeds and Wills.

William Taylor, John Bedell, jun. and Hilkiah Kearney, Esquires, Coroners. Mark Needham, Esq. County Treasurer.

Charles J Peters, G F Street, G P Bliss, J S Saunders, D L Robinson, G J Dibblee, C S Putnam, A K S Wetmore, C P Wetmore, G F S Berton, A L Wilmot, E B Smith, D Hailes Smith, John M Robinson, Charles Fisher, Nathaniel M Hazen, Richard Ketchum, and Daniel Morehouse, Esquires, Commissioners for taking Affidavits in the Supreme Court. *and Charles Parker &*

William Taylor, Asa Coy, Joseph Beek, Thomas C Everitt, Francis E Beckwith, and R English, Licensed Auctioneers.

## County of Charlotte.

Hugh M'Kay, Colin Campbell, Peter Stubs, Thomas Wyer, and James Allanshaw, Esquires—Justices of the Inferior Court of Common Pleas.

Hugh M'Kay, Colin Campbell, Peter Stubs, Thomas Wyer, James Allanshaw, Peter M'Callum, Thomas Armstrong, Moses Vernon, William Frankland, Rev. Jerome Alley, John Wilson, Tristram Moore, Patrick Clinch, Charles R. Hatheway, Aaron Upton, David Mowatt, Thomas Jones, Samuel Abbott, William Ker, George M. Porter, John Patterson, Cadwallader Curry, (*of the Quorum*) and James White, Esquires, Justices of the Peace.

Harris Hatch, Esquire, Keeper of the Rolls and Clerk of the Peace and Inferior Court of Common Pleas.

Harris Hatch, Esquire, Register of Deeds and Wills.

Donald M'Laughlan, and David Mowatt, Esquires, Coroners.

David W Jack, Esquire, County Treasurer.

The Justices of the Pleas, together with Charles R. Hatheway, Joseph N Clarke, Harris Hatch, Alfred L Street, George S Hill, Robert S Mowatt, Francis E Putnam, Samuel H Whitlock, George Ker, Thomas Chandler, and Samuel G Andrews, Esquires, Commissioners for taking Affidavits in the Supreme Court;—The Justices of the Common Pleas, together with Joseph N Clarke, Charles R Hatheway, and S H Whitlock, Esquires, Commissioners for taking Bail in the Supreme Court.

Colin Campbell, junior, Peter Stubs, Thomas Armstrong, Charles R Hatheway, and James Abbott, Licensed Auctioneers.



## County of Westmorland.

Samuel Gay, Rufus Smith, and John Keillor, Esquires—Justices of the Inferior Court of Common Pleas.

Samuel Gay, Rufus Smith, John Keillor, Jas Easterbrooks, Andrew Weldon, Edward Dixon, John Chapman, William Crane, jun. William Hannington, James Sayre, William Scott, Philip Palmer, Christopher Milner, Malcolm Wilmot, John Smith, Bill Chappell, Humphrey Gilbert, Marmaduke L. Backhouse, Harman Trueman, Amos E Botsford, (of the *Quorum*) and Robert Scott, Esquires, Justices of the Peace.

William P Sayre, Esquire, High Sheriff.

Edward B Chandler, Esquire, Keeper of the Rolls and Clerk of the Peace and Inferior Court of Common Pleas.

James Hughson, John Edgett, and C F Allison, Esquires, Coroners. Marmaduke L. Backhouse, Esq. Register of Deeds and Wills.

Samuel Gay, Rufus Smith, John Keillor, E B Chandler, Wm Wiley, Peter Stubs, jun. James Stewart, Charles Botsford, and James Sayre, Esquires—Commissioners for taking Affidavits to be read in the Supreme Court; and the Justices of the Inferior Court of Common Pleas, Commissioners for taking Bail in the same.

John Carey and Thomas Trenholm, Esquires, Licensed Auctioneers.

## County of Sunbury.

David Burpe, Thomas O Miles, and Theodore V W Clowes, Esquires—Justices of the Inferior Court of Common Pleas.

David Burpe, Thomas O Miles, Theodore V W Clowes, Isaac Hubbard, Chapman Smith, Stephen Peabody, Charles F Street, Cushi Hathaway, Nathaniel Hubbard, James Tilley, Geo. Hayward, Charles Hazen, (of the *Quorum*) and Wm Hoyt, Esquires—Justices of the Peace.

John Hazen, Esquire, High Sheriff.

George F S Berton, Esquire, Keeper of the Rolls and Clerk of the Peace and Inferior Court of Common Pleas.

Nathaniel Hubbard, Esquire, Register of Deeds and Wills.

Jas. Hazen, Geo. B. Covert, and Enoch Barker, Esquires, Coroners.

Isaac Hubbard, Elijah Miles, and David Burpe, Esquires, Commissioners for taking Bail in the Supreme Court.

Isaac Hubbard, Elijah Miles, David Burpe, and George W Cleary, Esquires—Commissioners for taking Affidavits in the Supreme Court.

## County of Northumberland.

Alexander Davidson, John Fraser, William Abrams, and Joseph Cunard, Esquires, Justices of the Inferior Court of Common Pleas.

Alexander Davidson, John Fraser, Joseph Cunard, William Abrams, John Clarke, John T Williston, William Joplin, Alex. Goodfellow, John Wright, Christopher Clarke, Dudley Perley, John NeSmith, Donald M'Kay, Robert Doak, John Campbell, J Gilmour, J Donald, S Henderson, (of the *Quorum*) and Thos C Allan, Esquires, Justices of the Peace.

Richard Samuel Clarke, Esquire, High Sheriff.

Thoma  
Peace and  
J Wrig  
J A St  
Hugh M  
taking Ba  
Robert  
John Whe  
W Carma  
Affidavits  
William  
Wright, J  
ston, and I

Henry N  
Isaac Perr  
Henry N  
Perry, Tho  
Gould Pick  
C Evanson  
Smith, Az  
and Samue  
Walter I  
William  
Peace and  
Ninyon C  
Henry N  
Esquires, C  
Walter I  
mar School  
Honorab  
taking Bai  
William S  
Caleb W  
censed Auc

Valentin  
of the Infe  
Valentin  
ard Yeama  
mas Under  
the Quor  
Nathaniel  
T R W  
and Infe  
Valentin  
Timoth  
the Gram

Thomas H Peters, Esquire, Keeper of the Rolls and Clerk of the Peace and Inferior Court of Common Pleas.

J Wright, J Anderson, and J M Johnston, Esquires, Coroners.

J A Street, Esquire, Register of Deeds and Wills.

Hugh Munro, and Alexander Davidson, Esquires, Commissioners for taking Bail in the Supreme Court.

Robert Ferguson, Perry Dumaresq, Samuel M'Kean, Thomas Ostle, John Wheaton, Thomas H Peters, J A S Street, Wm End, J Lobban, W Carman, jun. and Richard Hill, Esquires, Commissioners for taking Affidavits in the Supreme Court.

William Davidson, Richard Samuel Clarke, Patrick Henderson, Jas Wright, John Bell, James Davidson, Thomas C Allan, John M Johnston, and Patrick Brannen, Esquires, Licensed Auctioneers.

---

## King's County.

Henry Nase, Oliver Aruold, David B Wetmore, Geo H. Hazen, and Isaac Perry, Esquires, Justices of the Inferior Court of Common Pleas.

Henry Nase, Oliver Arnold, David B Wetmore, Geo H. Hazen, Isaac Perry, Thomas Ketchum, Rulof Rulofson, John Smith, James Brittain, Gould Picket, Benjamin B Crawford, Henry A Scovil, John C Vail, A C Evanson, William M'Leod, John Barbaric, Joshua Upham, Ebenezer Smith, Azor Hoyt, Isaac Haviland, John Humbert, (*of the Quorum*), and Samuel Foster, Esquire, Justices of the Peace.

Walter Bates, Esquire, High Sheriff.

William Tyng Peters, Esquire, Keeper of the Rolls and Clerk of the Peace and Inferior Court of Common Pleas.

Ninyon Chaloner, Esquire, Register of Deeds and Wills.

Henry Nase, David B Wetmore, George N Arnold, and Wm Frost, Esquires, Coroners.

Walter Bates and Edward G N Scovil, Esqrs. Trustees of the Grammar School.

Honorable John Coffin and Elias Scovil, Esquires, Commissioners for taking Bail in the Supreme Court.—Hon. John Coffin, Elias Scovil, and William Simpson, Esq. Commissioners for taking Affidavits in the same.

Caleb Wetmore, Simon Baxter, John Sheck and William Frost, Licensed Auctioneers.

---

## Queen's County.

Valentine H Peters, Samuel Scovil, Harry Peters, Esquires, Justices of the Inferior Court of Common Pleas.

Valentine H Peters, Samuel Scovil, John Colwell, John Golding, Richard Yeamans, Abiather Camp, Stephen Golding, William Foshay, Thomas Underhill, Thomas T Hewlett, John Earle, John Humphrey, (*of the Quorum*) and Charles Harrison, Esquires, Justices of the Peace.

Nathaniel Hubbard DeVeber, Esquire, High Sheriff.

T R Wetmore, Esquire, Keeper of the Rolls, and Clerk of the Peace and Inferior Court of Common Pleas.

Valentine H Peters, Esquire, Register of Deeds and Wills.

Timothy R Wetmore and Nathaniel DeVeber, Esquires, Trustees of the Grammar School.

Valentine H Peters and Samuel Scovil, Esquires, Commissioners for taking Bail in the Supreme Court.—Valentine H Peters, Samuel Scovil, and T R Wetmore, Commissioners for taking Affidavits in the Supreme Court.

Thos Gilbert, John Earle, and Thos T Hewlett, Esquires, Coroners.  
Nathaniel Hubbard DeVeber, Esquire, Licensed Auctioneer.

## County of Kent.

John Wheaton, Samuel M'Kean, George Pagan, Esquires, Justices of the Inferior Courts of Common Pleas.

John Wheaton, Samuel M'Kean, George Pagan, George Thompson, Thomas Ostle, John Jardine, John Bowser, William Hannington, (of the Quorum,) and Thomas Powell, Esquires; Justices of the Peace.

Thomas Lansdowne, Esquire, High Sheriff.

John Wesley Weldon, Esquire, Keeper of the Rolls and Clerk of the Peace and Inferior Court of Common Pleas.

George Pagan, Esquire, Coroner.

John W Weldon, Peter Stubs, jun. and William Chandler, Commissioners for taking Affidavits to be read in the Supreme Court.

## County of Gloucester.

Hugh Munro, Perry Dumaresq, and Robert Ferguson, Esquires, Justices of the Inferior Court of Common Pleas.

Hugh Munro, Perry Dumaresq, Robert Ferguson, John Miller, James Blackhall, Thomas DeBlois, John Montgomery, Adam Ferguson, Wm Flemming, Benjamin Dawson, and John Young, Esquires, Justices of the Quorum.—Harvey Adams, Esquire, Justice of the Peace.

Richard Carman, Esquire, Keeper of the Rolls and Clerk of the Peace and Inferior Court of Common Pleas.

Joseph Read, Esquire, Coroner.

Robert H Peters, Andrew Barbarie, and Richard Carman, Esquires, Commissioners for taking Affidavits in the Supreme Court.

Hugh Munro, Perry Dumaresq, and Adam Ferguson, Esquire, Commissioners for taking Bail in the Supreme Court.

## City and County of Saint John.

The Mayor and Recorder, Justices of the Mayor's Court.

Lauchlan Donaldson, George Harding, Daniel Ansley, Thomas Harding, Thomas Sandall, William Olive, and George Bond, Esquires, Justices of the Peace and of the Quorum.

John Ward, William Scovil, James Peters, Thomas Millidge, Ralph M Jarvis, Lewis Bliss, Charles Simonds, G C Carman, Zalmon Wheeler, John Jordan, Thos Heaviside, Allen Otty, George Anderson, James Moran, Hugh Johnston, Henry Gilbert, Robert W Crookshank, Noah Diabrow, Robert Ellis, Robert Payne, Archibald Menzies, George Brown, and James Hendricks, Esquires, Justices of the Peace.

James  
James  
Alexan  
Alexan  
Charles  
Henry  
Benjam  
preme Co  
Charles  
Kinnear,  
Swymmer  
Wright,  
Hazen, R  
George W  
read in th

TERMS:-  
KING'S  
SUNBU  
QUEEN  
CHARI  
KENT-  
WEST  
NORTH  
GLOUC

### Terms

SAINT JO  
tember  
YORK-S  
Comm  
WESTMO  
—Addi  
CHARLO  
Additio  
Decem  
KING'S C  
of the  
QUEEN'S  
Terms  
SUNBUR  
Comm  
NORTH  
Terms  
KENT-S  
Comm  
GLOUCE

James White, Esq. High Sheriff—Mr. A. Garrison, Deputy Sheriff.  
 James Peters, Junior, Esquire, Clerk of the Peace, &c.  
 Alexander M'Leod, Esquire, Coroner.  
 Alexander M'Leod, Esquire, County Treasurer.  
 Charles Drury, Esquire, Register of Deeds and Wills.  
 Henry Swymmer, Esquire, Surrogate.  
 Benjamin L Peters, Esquire, Commissioner for taking Bail in the Supreme Court.

Charles J Peters, William Tyng Peters, Robert Parker, William B Kinnear, John T Murray, Neville Parker, James Peters, junior, Henry Swymmer, Francis A Kinnear, Robert F Hazen, Le Baron Hazen, Wm Wright, Robert Robertson, jun. H N H Lugin, M H Perley, Robert L Hazen, Richard Sands, jun. John Johnston, James William Boyd, and George Wheeler, Esquires, Commissioners for taking Affidavits to be read in the Supreme Court.

## COURTS OF NISI PRIUS.

TERMS:—*City and County of St. John*—2d Tuesday in January and KING'S—4th Tuesday in January. [3d Tuesday in June.

SUNBURY—3d Tuesday in February.

QUEEN'S—4th Tuesday in February.

CHARLOTTE—1st Tuesday in August. *Additional. March 1833*

KENT—Thursday after the Third Tuesday in August.

WESTMORLAND—1st Tuesday in September.

NORTHUMBERLAND—3d Tuesday in September.

GLOUCESTER—2d Monday in September.

### *Terms of the Sittings of the Court of General Session, and Inferior Court of Common Pleas.*

SAINT JOHN—3d Tuesday in March, and 1st Tuesday in June, September and December.

YORK—Second Tuesday in January and June—Additional Terms of the Common Pleas—3d Tuesday in March and 2d Tuesday in October.

WESTMORLAND—3d Tuesday in June, and 2d Tuesday in December—Additional Terms of the C. Pleas—1st Tuesday in April and Sept.

CHARLOTTE—2d Tuesday in April, and 3d Tuesday in September—Additional Terms of the Common Pleas—2d Tuesday in July and December.

KING'S COUNTY—1st Tuesday in March and July—Additional Terms of the Common Pleas—1st Tuesday in May and November.

QUEEN'S COUNTY—4th Tuesday in January and June—Additional Terms of the Common Pleas—4th Tuesday in April and October.

SUNBURY—3d Tuesday in January and June—Additional Terms of the Common Pleas—4th Tuesday in March and 3d Tuesday in October.

NORTHUMBERLAND—1st Tuesday in March and August—Additional Terms of the Common Pleas—1st Tuesday in June and November.

KENT—3d Tuesdays in January and June—Additional Terms of the Common Pleas—1st Tuesday in April and September.

GLOUCESTER—2d Tuesday in January and last Tuesday in July—Additional Terms of the Common Pleas—2d Tuesday in July and Nov.

**STAFF OF THE ARMY,**  
SERVING IN THE PROVINCE OF NEW-BRUNSWICK,  
UNDER THE COMMAND OF  
*Major-General Sir ARCHIBALD CAMPBELL, G. C. B.*

Captain J. Campbell, 88th Regiment, Aid-de-Camp.  
Lieutenant J. Gallagher, (half-pay) Town-Major.

●●●●●  
**GARRISONS.**

**FREDERICTON**—Lieut.-Colonel W. Eeles, (R. B.) Commandant.  
**ST. JOHN**—Lieut.-Colonel C. B. Turner, (I. F. O.) Commandant.  
**ST. ANDREWS**, { Lieutenant M'Lachlan, (R. B.) Commandant,  
                  { Staff Assistant Surgeon Lawson.  
                  { Lieutenant Lyster, Royal Engineers.

●●●●●  
**CHAPLAINS.**

**FREDERICTON**—Venerable Archdeacon Coster, M. A.  
**SAINT JOHN**—Reverend Benjamin G. Gray, D. D.  
**SAINT ANDREWS**—Reverend Jerome Alley.

●●●●●  
**COMMISSARIAT DEPARTMENT.**

W. H. Robinson, Esquire, Assistant Commissary General.  
George Swinney, Esquire, Deputy Assistant Commissary General.  
W. Milliken, Esquire, do do do do.

●●●●●  
**ORDNANCE DEPARTMENT.**

F. C. Frith, Esquire, Deputy Ordnance Store Keeper.  
Lieutenant S. Huyghue, 1st Clerk.  
Mr. Robert Pickthall, 2nd Clerk.  
Mr. William Bond, Store House Man.

●●●●●  
**BARRACK DEPARTMENT.**

J. E. Woolford, Esquire, Assistant Barrack Master, Fredericton.

●●●●●  
**ROYAL ENGINEER DEPARTMENT.**

Captain A. Marshall, Commanding.  
Lieutenant Lyster.  
Mr. Lionel Anderson, Clerk.  
Mr. Henry Hennigar, Overseer of Works.

●●●●●  
**BOARD OF RESPECTIVE OFFICERS.**

Captain Marshall, Royal Engineers.  
Captain M. Evans, Royal Artillery.  
The Deputy Ordnance Store Keeper.

OFFIC

Captain

"Cop  
runna;"  
rigo;"  
"Orther

\* A.

T. F.

\*G.

J. M.

J. V.

W.

A. M.

R. W.

R. J.

Regim

The \*

Waterloo

Vice Adm

er-in-Ch

&c. &c

Monck

WIND

Lord Wil

Command

(b), Arth

tain Mar

James Na

Surgeon,

Fairserv

BLAN

Command

Usher; L

Walsh; M

Armstrong

PALM

W Noble,

C; C

Esq; A

**OFFICERS OF CORPS SERVING IN THE PROVINCE.**

**ROYAL ARTILLERY.**

Captain M. Evans, Commanding ; Lieutenant W. R. Cleeve.

**RIFLE BRIGADE.**

"Copenhagen;" "Monte Video;" "Roleia;" "Vimiera;" "Corrunna;" "Busaco;" "Barrosa;" "Fuentes d' Onor;" "Cuidad Rodrigo;" "Badajoz;" "Salamanca;" "Vittoria;" "Nivelle;" "Nive;" "Orthes;" "Toulouse;" "Peninsula;" "Waterloo."

*Lieutenant-Colonel* \* William Eeles, *Commanding.*

*Major,*

\* A. Stewart.

*Captains,*

T. E. Kelly,  
\*G. Simmons,  
J. Maister,  
J. V. Saumarez,  
W. Sullivan,

*1st Lieutenants.*

A. McLachlan,  
R. Walpole,  
R. Jones.

*2d Lieutenants.*

R. H. Fitz Herbert,  
A. Munro,  
K. W. Young,  
R. Petley,  
G. K. Carr,

*Paymaster.*

W. Holden, (Captain.)

*Quarter Master.*

\* W. Hill,

*Assistant Surgeons.*

E. G. Lloyd, and  
W. Pardy.

*Regiments—Green, Facings Black.*

*The \* prefixed to the Officers names denote their having been at Waterloo.*

**THE NAVY.**

Vice Admiral Sir EDWARD GRIFFITH COLPOYS, K. C. B. Commander-in-Chief on the West India, Halifax, and Newfoundland Stations, &c. &c. &c. Edward Lawes, Esq. Secretary. The Hon. A. W. Monckton, Flag Lieutenant.

**WINCHESTER**, 52 Guns—Flag Ship—Captain, the Rt. Honble. Lord William Paget; Commander, Henry Griffith Colpoys; Supy. Commander, H. W. Bayfield; Lieuts. J. T. Warren, Andrew Smith, (b), Arthur Wakefield, Wm. Louis, Supy. Lieut. P. E. Collins; Captain Marines, John Hewes; 2d Lt Marines, John Urquhart; Master, James Napier; Purser, Thomas Gliddon; Chaplain, Revd T Edwards; Surgeon, John Campbell, (b); Assistant Surgeons, R H Brown, Robert Fairservia.

**BLANCHE**, 46 Guns—Commodore, A Farquhar, CB & K H.; Commander, Wm. Burnett; Lieuts Henry Stroud, Edward Lake, S H Usher; 1st Lieut Marines, R W Pascoe; 2d Lieut Marines, A S J Walsh; Master, W C Middlewist; Purser, R M Read; Surgeon, John Armstrong; Asst Surgeon, E Hilditch.

**PALLAS**, 42 Guns—Captain, M H Dixon, Lieuts Geo Caswell, J W Noble, H Blair, W C Nowell; 2d Lieuts Marines E Hocker, John [?]; Chaplain, N T Royse; Purser, John Porter; Surgeon, John [?]; Asst Surgeon, Henry Holmes.

**RANGER**, 25 Guns, Capt Wm Walpole; Lieuts W Crooke, D B Bedford, J A Abbott; 1st Lieut Marines, Wm White; Master, E Dunsterville; Purser, Wm Reeve; Surgeon, James Allen; Asst Surgeon, Joseph Stevenson.

**NORTH STAR**, 29 Guns, Captain, Hon G W R Trefusis, Lieuts John Parsons, Chas Bolton, C H M Buckle. 1st Lieut Marines, Chas Scott, Master Geo Parsons. Purser, E F Heaslop. Surgeon, Robert Espie. Asst Surgeon, J O M<sup>c</sup>William.

**SAPPHIRE**, 28 Guns, Capt. Hon Wm Wellesley. Lieuts T Gregory, F Gilly, L Halliday. Purser, W Crane. Surgeon, H Goldwey. Assistant Surgeon, D Grant.

**ARIADNE**, 28 guns, Capt Chas Phillips. Lieuts J M<sup>c</sup>Donald, K Corbet, E Seymour; 2d Lieut Marines, A Anderson; Master, T Holloway; Purser, John O'Brien; Surgeon, A Macanah; Asst Surgeon, J C Mottley.

**COLUMBINE**, 18 guns, Commander, H. C Love; Lieuts W S Blount, G St V King; Master, John Pyke; Purser, John Tindall; Surgeon, Alex Smith; Asst Surgeon, T H Nation

**GANNET**, 18 guns, Commander, M H Sweney; Lieuts P Patten, T W Austen; Master, W L Brown; Purser, R Simmonds; Surgeon, J Riardon; Asst Surgeon, John Andrews.

**RACEHORSE**, 18 guns, Commander, C H Williams; Lieut G. M Hunter; Master, James Cooper; Purser, James Halse; Surgeon, A Savage; Asst Surgeon, R Carpenter.

**SPARROWHAWK**, 18 guns, Commander, D Mayne; Lieut C Bazot; Master, T P Codner; Purser, John Lord; Surgeon, R C Nutt; Asst Surgeon, J Sinclair.

**HYACINTH**, 15 guns, Commander, Wm Oldrey; Lieuts R G Welch, Thos Hope; Master, Geo Peacock; Purser, W J Atrill; Surgeon, E B Rowley; Asst Surgeon, A Yeoman.

**CHAMPION**, 18 guns, Commander F V Cotton; Lieuts H Smith, J S Foreman; Master, L Gillies; Purser, Wm Hamilton; Surgeon, T Johnston; Asst Surgeon, J J Lancaster.

**FIREFLY**, 8 Guns, Lieut Commr. J J M<sup>c</sup>Donnell; Asst Surgeon, John M<sup>c</sup>Rae.

**KANGAROO**, 8 guns, Lieut Comr James Hookey; Asst Surgeon, W Pennycook.

**MINX**, 8 guns, Lieut Comr John Simpson; Asst Surgn. P Brennan.

**NIMBLE**, 5 guns, Lieut Comr J M<sup>c</sup>Polbury.

**PICKLE**, 5 guns, Lieut Comr Thos Taplin; Asst Surgeon, A C Bell.

**PUNCHER**, 5 guns, Lieut Comr W S Tulloh; Asst Surgeon, R Holden.

**SKIPJACK**, 5 guns, Lieut Comr W Skortland; Asst Surgeon, T E Ring.

**SPEEDWELL**, 5 guns, Lieut Comr Wm Warren; Asst Surgeon, R W Campbell.



*Officers of H. M. Naval Yard.*

A E Jones, Flag master shipwright; ———— master's steward;  
Mr James Ritchie, master shipwright's clerk; Mr James A. M.  
Dunn, clerk; Mr James Matthews, gate porter.

ke, D B  
r, E Dun-  
Surgeon,  
is, Lieuts  
nes, Chas  
n, Robert  
ts T Gre-  
Goldwey.  
Donald, K  
r, T Hol-  
Surgeon, J  
Lieuts W S  
Tindall ;  
P Patten,  
; Surgeon,  
; Lieut G.  
Surgeon, A  
e; Lieut C  
R C Nutt ;  
Lieuts R G  
Atrill; Sur-  
ts H Smith,  
n; Surgeon,  
st Surgeon,  
st Surgeon,  
n. P Brennan.  
Surgeon, A C  
t Surgeon, R  
t Surgeon, T  
Asst Surgeon,  
er's  
Jan 18 18

*[Faint, illegible text, possibly bleed-through from the reverse side of the page]*



B  
S  
J  
J  
N  
S  
C  
H

G. Minchin Lt: Col: 1. Jan'y 1832.

\* R. Kitchum to be Lt: Col: dated 1. Jan'y 1832

\* Hazen Lt: Fredericks gone to Woodstock

IN T

His Exce  
Lieut  
Lieut  
Hear  
Major  
Lieut

First

Lieuten  
J. Allen,

G. Minchin  
C

M. Brann  
G. K. Luga  
G. P. Bliss  
G. F. Str  
D. L. Robi  
W. M'Bea  
P. Fisher  
J. F. Tay  
G. E. Kete

Lieut

R. Dibble  
J. Holbroo  
A. K. S. W  
L. A. Wil  
H. Vavas  
N. Walken  
T. Gardine  
J. A. Beck  
G. F. H. Mi  
B. Wolhau  
F. E. Beck  
W. N. Ake  
D. H. Smi  
W. Grov  
C. Murray  
N. M. Ha  
Asa Coy,

C. W. Mar  
R. Fulton  
J. Gregory  
A. O. Star  
W. S. Est  
W. D. Ha  
W. Needh  
John Bate  
S. Barker  
Geo. Woo  
Pa  
I. Taylor,

# STAFF OF THE MILITIA, IN THE PROVINCE OF NEW-BRUNSWICK.

His Excellency Major-General Sir Archibald Campbell, Bart. Commander-in-Chief.

Lieutenant Colonel G. B. Turner, } Inspecting Field Officer.  
Lieutenant Colonel John Allen, }  
Honorable George Shore, Adjutant General.  
Major John Gallagher, Quarter Master General.  
Lieutenant Colonel Charles Drury, Provincial Aid-de-Camp.

## YORK COUNTY MILITIA.

### First Battalion.

*Lieutenant Colonel.*  
J. Allen, 21st May, 1824

*Major.*  
G. Minchin, 25 May, 1824.

#### *Captains.*

M. Brannen, 14 June, '24  
G. K. Lugin, (African) do  
G. P. Bliss, (Art.) 10 Sep. '27  
G. F. Street, 22d Nov. '28  
D. L. Robinson, 24th do  
W. M'Beath, (ri) 30 Aug. '30  
P. Fisher, 14th Sept. do  
J. F. Taylor, 15th do do  
G. E. Ketchum, 22 Aug. '31

#### *Lieutenants.*

R. Dibble, (Art.) 9 Jan. '28  
J. Holbrook, (art) 10 Sep do  
A. K. S. Wetmore 22 No. '28  
L. A. Willnot, 26 do do  
H. Vavasour, 27 do do  
N. Walker, (Af.) 28 do do  
T. Gardiner, (Af.) 29 do do  
J. A. Beckwith, 1 Dec. do  
G. F. H. Minchin, 24 Sep '29  
B. Welhaupter, (r) 30 Au. '30  
F. E. Beckwith, (r.) 31 do do  
W. N. Akerley, (r.) 1 Sep do  
D. H. Smith, 14 do do  
W. Grosvenor, 15 do do  
C. Murray, 16 do do  
N. M. Hazen, 18 do do  
Asa Coy, 20 do do

#### *Ensigns.*

C. W. Marsh, (Af.) 25 Nov. '28  
R. Fulton, 14 Sept. '30  
J. Gregory, 16 do do  
A. O. Starrat, 17 do do  
W. S. Estey, 19 do do  
W. D. Hart, 20 do do  
W. Needham, 22 Aug. '31  
John Bitten, 23 do do  
S. Baker, 24 do do  
Geo. Woods, 25 do do  
*Paymaster.*  
J. Taylor, (capt) 14 June, '24

### *Adjutant.*

T. R. Wetmore, cap. 118. '28  
*Quartermaster.*  
G. F. S. Berton, (lt.) 22 N. '28  
*Surgeon.*  
T. Emersc, 20 July, '19

### Second Battalion.

#### *Major.*

R. Ketchum, 2 April, '18

#### *Captains.*

J. D. Dibblee, 9 Mar. '16  
T. G. Cunliffe, 8 April, '18  
A. B. Walsh, 25 June, '21  
G. Morehouse, 6 May, '22  
J. Browne, 14 June, '24  
W. Dibblee, 4 April, '25  
J. Ketchum, 5 do do  
T. Phillips, 9 June, '23  
A. Nicholson, 29 July, '28  
B. Tibbitta, 30 do do  
J. Dickenson, 30 Aug. '30  
E. Turner, 31 do do

#### *Lieutenants.*

B. Griffith, 6 April, '25  
R. Payson, 7 do do  
J. Kearney, 8 do do  
Jas. Dingee, 9 do do  
C. M'Laughlan, 10 Sep. '27  
E. Cunliffe, 28 July, '28  
E. Sisson, 30 do do  
H. Dibblee, 24 Aug. '29  
N. Stickney, 25 do do  
P. Dickenson, 30 do do  
M. Giberson, 31 do do  
G. Milbery, 1 Sept do  
W. Mallery, 25 Oct. do

#### *Ensigns.*

R. Hannah, 9 April, '25  
W. M'Donald, 10 Sept. '27  
A. B. Sharp, 11 do do  
W. D. Bedell, 23 July, '28  
J. N. U. Nicholson, 23 do do  
G. Murphy, 30 do do  
W. M'Kenzie, 24 Aug. '29  
O. Upham, 25 do do  
J. Brown, Jr. 30 do do

T. Burlock, 31 Aug. '30  
J. Giberson, 1 Sept. do  
Jas. Cloyd, 2 do do  
R. Ketchum, 3 do do  
Jos. Phillips, 4 do do  
W. Shaw, 25 Octa do

### *Adjutant.*

C. Raymond, cap. 22 Jy. '28  
*Quartermaster.*  
C. Peabody, lt. 23 Sep. '28

### Third Battalion.

#### *Lieutenant Colonel.*

J. Allen, 21st May, 1824

#### *Major.*

S. Hammond, 14 June, '24

#### *Captains.*

W. Davidson, 9 March, '16  
A. Verza, 19 Jan. 1816  
V. Harding, 19 Aug. 1822  
F. Morehouse, 15 June, '24  
Geo. Long, 2 Feb. '29  
W. C. Joslin, 3 do do  
Jas. Hartley, 4 do do  
John Grant, 5 do do  
Jos. Sleot, 2 July, do  
T. Jones, (af.) 3 do do  
H. Cronkhite, 4 do do  
J. Haggerman, 5 do do  
Jas. Miles, 2 April, '22  
Jno. Barker, 20 Sept. '30

#### *Lieutenants.*

W. Kitcher, 3 Feb. '28  
E. Dow, 5 do do  
J. Hammond, 6 do do  
W. Davidson, 7 do do  
Jno. Verza, 3 July, '28  
Jas. Jones, 4 do do  
S. Lockwood, 6 do do  
C. Morehouse, 7 do do  
A. Hartt, 8 do do  
A. Hammond, 9 do do  
D. Parent, 10 do do  
Jas. Tibbitta, 11 do do  
A. Moody, 12 do do  
D. Phillips, 13 do do  
J. Campbell, 20 Sept. '30

Benj. Burt, 21 Sept. 1830	F. Violette, 4 Dec. 1824	<i>Captains.</i>
<i>Ensigns.</i>	S. Hebert, 4 July, '27	A. M'Lean, 20 July, 1819
D. Yerxa, Jr. 2 July, '29	L.R. Coombes 14 June, '24	R. Curry, 12 Dec. '28
Jas. Golder, 3 do do	F. Rice, adjt. 7 Sept. '30	D. Hallett, 13 do do
D. Jewett, 4 do do	G. Cere, 8 do do	G. Clements, 14 do do
Jas. Cliff, 5 do do	R. Michaud, 9 do do	L. Campbell, 15 do do
Wm. Jones, 6 do do	<i>Lieutenants.</i>	J. M'Gibbon, 12 June, '30
J. Christy, 7 do do	Xavier Cere, 2 Dec. '24	<i>Lieutenants.</i>
T. Parent, 8 do do	L. Bellefleur, 4 do do	P. Campbell, 13 Dec. '22
J. Ingraham, jr. 9 do do	J. B. Marth, 5 do do	H. Henley, 14 do do
E. Garden, 10 do do	Jos. Cere, 7 Sept. '30	D. J. Estey, 15 do do
S. Cronkhite, 11 do do	Jos. Hebert, 8 do do	G. Sterling, 17 do do
Geo. Fox, 12 do do	J. B. Daiale, 9 do do	A. M'Lean, 12 June, '30
D. Dow, 13 do do	B. Lizotte, 10 do do	<i>Ensigns.</i>
P. Watson, 14 do do	T. Nugent, 11 do do	A. M'Gibbon, 13 Dec. '30
R. Barker, 18 Sept. '30	S. Hebert, jr. 12 do do	W. Sterling, 14 do do
B. Wheeler, 19 do do	M. Farrell, 13 do do	C. Nevers, 15 do do
R. Kilburn, 20 do do	A M'Crear, 14 do do	D. Manson, 16 do do
T. Saunders, 21 do do	<i>Ensigns.</i>	C.A. Harding, 17 do do
Jno. Brewer, 22 do do	D. Violette, 5 Dec. '24	Alex. Ross, 12 June, '30
<i>Paymaster.</i>	R. Violette, 7 Sept. '30	<i>Adjutant.</i>
J. Allen, capt. 2 July '29	F. M'Donnell, 8 do do	W. Carney, cap. 1 Jan. '15
<i>Adjutant.</i>	M. Mercure, 9 do do	<i>Quartermaster.</i>
I. Lawrence, cap. 20 Sep. '30	J. Burgoine, 10 do do	M. Pickard, lt. 15 Dec. '28
<i>Quartermaster.</i>	R. Martin, 11 do do	Yark County Cavalry.
J. Parent, capt. 1 June, '22	P. Mercure, 11 do do	<i>Captain.</i>
<i>Surgeon.</i>	T. Martin, 13 do do	W. Woodford, 22 Nov. '28
W. Caverhill, 16 Apr. '22	D. Cere, 14 do do	<i>Lieutenants.</i>
<i>Fourth Battalion.</i>	<i>Adjutant.</i>	T. L. Langen, 22 Nov. '28
<i>Lieutenant Colonel.</i>	F. Rice, capt. 1 Dec. '24	G. J. Dibblee 24 do do
P. Fraser, 7th Sept. 1830	<i>Quartermaster.</i>	<i>Cornet.</i>
<i>Captains.</i>	J. B. Souci, 1st Dec. '24	W. H. Odell, 22 do do
P. Lizotte, 1st Dec. 1824	<i>Fifth Battalion.</i>	<i>Quartermaster.</i>
A. Bellefleur, 2 do do	<i>Major.</i>	J. W. Jouett, cor. 15 Dec. '28
F. Thibodeau, 3 do do	V. Robinson, 22 Nov. 1828	

### SAINT JOHN CITY MILITIA

<i>First Battalion.</i>	E. L. Jarvis, 9 Jan. '27	<i>Adjutant.</i>
<i>Lieutenant Colonel.</i>	C. Drury, 9 do do	G. D. Robinson, c. 26 Mr. '27
C. Drury, stf. 25 Oct. 1824	T. M' Mackin, r. 26 Mar. do	<i>Quartermaster.</i>
<i>Major.</i>	W. Merritt, 27 do do	J. Kirk, capt. 22 Aug. '25
B. L. Peters, lt. col. 25 O. '24	N. Dishrow, 3 July, do	<i>Surgeon.</i>
<i>Captains.</i>	D. J. Merritt, 16 June, '28	J. Boyd, M. D. 16 Sep. '23
G. D. Robinson, aj. 19 Ap. '22	E. J. Budd, 30 Aug. '30	<i>Enrolling Officer.</i>
W. Scoullar, 22 Aug. '25	A. M'Grotty, 31 do do	J. O. Betts, capt. 3 July, '27
T. Leavitt, af. 22 do do	C. Longstroth, af. 1 Sep. do	<i>Second Battalion.</i>
T. Barlow, art. 9 Jan. '27	H. N. H. Lugin, 2 do do	<i>Major.</i>
R. W. Crookshank, 26 Mh do	<i>Second Lieutenants.</i>	R. W. Crookshank, 12 Jn '30
D. Jordan, 27 do do	H. T. Partelow, af. 22 Au '25	<i>Captains.</i>
T. Nisbet, 3 July, do	W. Y. Theal, 9 Jan. '27	H. Flaherty, adj. 23 Au. '21
E. Barlow, jr. 4 July, '27	W. O. Smith, rif. 26 Mh '27	T. Smith, 5 Sept. '21
Jno Smyth, 5 July, '27	D. Smith, 27 do do	G. Vanhorne, do do
J. J. Roberts, 16 do '28	J. Robertson, 28 do do	T. Merritt, 1 July, '22
M. Hennigar, 30 Aug. '30	W. Hutchinson, 3 July, do	S. Smith, 25 Aug. '23
T. L. Nicholson, 31 do do	J. W. M'Leod, ri. 16 Jne. '28	R. O. Minnette, do do
<i>First Lieutenants.</i>	C. J. Hendricks, 14 Sep. '29	J. T. Hanford, 5 Dec. '24
T. Hanford, art. 3 Sep. '22	R. Seely, 30 Aug. '30	<i>Paymaster.</i>
G. Waterbery, art. 3d do	<i>Paymaster.</i>	W. Bowser, art. 5 Dec. '23

ly, 1819  
 ec. '28  
 do do  
 do do  
 do do  
 June, '30  
 ts.  
 Dec. '22  
 do do  
 do do  
 do do  
 June, '30  
 Dec. '30  
 4 do do  
 5 do do  
 6 do do  
 7 do do  
 2 June, '30  
 nt.  
 1 Jan. '15  
 aster.  
 15 Dec. '28  
 Cavalry.  
 in.  
 22 Nov. '28  
 ants.  
 22 Nov. '28  
 24 do do  
 net.  
 22 do do  
 aster.  
 or. 15 Dec. '28  
 atant.  
 o, c. 26 Mr. '27  
 rmaster.  
 t. 22 Aug. '23  
 geon.  
 D. 16 Sep. '23  
 ng Officer.  
 apt. 3 July, '27  
 Battalion.  
 Major.  
 kshank, 12 Jan '30  
 ptains.  
 y, adj. 23 Au. '21  
 5 Sept. '21  
 ne, do do  
 1 July, '22  
 25 Aug. '23  
 nette, do do  
 ord, 5 Dec. '24  
 ) 26 Aug. '23

W. J. Robinson Rife Brigade Co. 32  
 X. J. Robinson to be Lt. Col. dated 1/24/1832

Benj.

D. Ye

Jas. C

D. Je

Jas. C

Wm.

J. Ch

T. P

J. Ing

E. G

S. Cr

Geo.

D. D

P. W

R. B

B. V

R. S

T. S

Jno.

J. A

I. L

J. J

W

P.

P. A.

F.

C

B

G

V

T

E

I

J

J

J

J. V. T

G. De

A. Cro

T. Rec

Jas. Ch

W. Va

N. Sta

W. Le

T. B. M

C. J. P

W. Mu

G. Ande

A. Wed

W. Eag

G. U. G

A. Menz

S. Stran

S. Dako

R. Payn

Wm. Cr

Jno. Cunn

Jas. Ketch

D. Ansley

I. Flewe

L

J. Ponsfo

W. Drak

J. Stockh

Jas. Trav

G. Clark

Jas. Payn

E. Merritt

G. Eagler

B. Travis

D. L. Dyk

Chs. The

J. Ketch

Licute

T. O. Mill

T. V. W. C

C

Jas. Filley

G. Haywa

John Dow

Wm. Hoy

F. A. DeV

E. A. Mil

Jno. Brow

Jer. Trac

W. S. Ba

J. V. Thurgar, rf. 23 Sep. '26	W. H. Street, 23 Sep. '26	W. Hughson, 17 Mar. '29
G. DeBlois, 20 Aug. '27	N. J. Brown, do do	E. W. Greenwood, 19 do
A. Crookshank, 15 Mar. '30	G. A. Nagel, s. f. do do	<i>Paymaster.</i>
T. Reed, 2 Aug. '30	W. P. Scott, s. f. do do	I. L. Bedell, cap 20 Sep. '27
<i>Lieutenants.</i>		
Jas. Clark, 5 Sept. 1821	H. Smith, 20 Aug. '27	<i>Adjutant.</i>
W. Vaughan, s. f. do do	J. R. Speden, 22 do do	H. Flaherty, cap. 25 Se. '36
R. Stanton, do do	O. Tisdale, 17 Mar. '29	<i>Quartermaster.</i>
W. Leavitt, do do	J. Hooper, rif. 18 do do	H. Chubb, cap. 11 Sep. '24
T. B. Millidge, ri. 17 Se. '22	T. N. Smith, s. f. 7 Sep. '29	<i>Surgeon.</i>
C. J. Peters, jr. 22 Aug. '25	<i>Ensigns.</i>	
W. Mullin, 23 Aug. '25	Jno. Whhart, 23 Sept. '26	H. Cook, 20th Aug. 1827
	Jas. Vernon, 13 June, '24	

**SAINT JOHN COUNTY REGIMENT.**

*Lieutenant Colonel Charles Simonds, Commanding.*

<b>First Battalion.</b>	R. Carman, 26 Oct. '28	D. Vaughan, 22 do '24	
	I. Stevens, 27 do do	J. Cunningham, 25 Oct. '30	
<i>Majors.</i>	R. Jenkins, af. 5 July, '30	T. H. Black, 15 Aug. '34	
G. Anderson, lt. c. 27 Ap. '25	Jas. Bartlett, 30 Aug. do	Jno. Fownes, 16 do do	
A. Wedderburn, 1 Jan. '28	W. H. Travis, 25 Oct. do	W. M'Gannon, 17 do do	
<i>Captains.</i>			
W. Eagles, s. f. 10 May, '24	S. Bulyea, 7 April, 1825	Thos. Bean, 31 Aug. '24	
G. C. Carman, 21 June, do	T. Cunnard, 17 Sept. '27	E. Sentill, 3 June, '22	
A. Menzies, 3 Aug. do	G. Vaughan, 25 Oct. '28	A. Bradshaw, 1 July, do	
S. Strange, s. f. 29 Mar. '25	J. Beattie, af. 5 July, '30	A. S. Hodge, 25 Oct. '28	
S. Dalton, 5 Apr. do	F. Hatheway, 30 Aug. '30	W. O. Cody, 25 Oct. do	
R. Payne, 17 May, do	H. Quinton, 31 do do	Wm. Veal, 15 Aug. '24	
Wm. Craft, 11 June, do	<i>Adjutant.</i>		
Jno. Cunnard, 17 Sep. '27	C. L. Hatheway, cp. 7 S. '21	Steph. Mosier, 16 do do	
Jas. Ketchum, 23 July, '28	<i>Paymaster.</i>		
D. Anley, 23 Oct. do	G. Mathew, cap. 30 Au. '30	Thos. Fowacs, 17 do do	
E. Flewelling, 25 do do	<i>Surgeon.</i>		
<i>Lieutenants.</i>			
J. Ponsford, s. f. 29 Mar. '25	S. G. Hamilton, 30 Aug. '30	H. Anthony, 22 Sept. do	
W. Drake, s. f. do do	<i>Quartermaster.</i>		
J. Stackhouse, s. f. do do	W. Scammell, 30 Aug. '30	Jas. Swim, 20 July, '24	
Jap. Travis, 4 April, do	<i>Second Battalion.</i>		
G. Clark, 11 June, '27	<i>Major.</i>		
Jas. Payne, 18 do do	Jas. Moran, 12 June, 1830	<i>Paymaster.</i>	
E. Merritt, 17 Sept. do	<i>Captains.</i>		
G. Eagles, s. f. 19 do do	W. G. Cody, 28 Aug. '21	J. R. Partelow, c. 26 No. '22	
B. Travis, 20 do do	J. Partelow, 1 Sept. do	<i>Quartermaster.</i>	
D. L. Dykeman, 28 July, '28	John Jordan, 3 June. '22	T. Stevens, 30 Aug. '30	
Chs. Theal, 28 July, '28	<i>Adjutant.</i>		
J. Ketchum, 30 do do	<i>Paymaster.</i>		

**SUNBURY COUNTY MILITIA.**

<i>Lieutenant Colonel.</i>	<i>Lieutenants.</i>	G. B. Taylor, 28 Oct. '28	
T. O. Miles, 25 Oct. 1828	Geo. Nevers, 9 Aug. '24	J. Tilley, jr. 28 do do	
<i>Major.</i>	N. Hubbard, 11 Sep. 1827	W. Kimball, 24 Aug. 1829	
T. V. W. Clowes, 25 Oct. '28	G. H. N. Harding, 12 do do	Jno. Bailey, 25 do do	
<i>Captains.</i>			
Jas. Filley, 25 Apr. '20	H. Loder, 25 Oct. '28	H. Boone, 28 do do	
G. Hayward, 3 Aug. '24	G. Miles, 26 do do	B. Barker, 30 Aug. '30	
John Dow, 3 do do	C. Hazen, 24 Aug. '29	<i>Adjutant.</i>	
Wm. Hoyt, 1 Oct. 1825	L. Seely, 25 do do	J. Hazen, cap. 25 Aug. '23	
F. A. DeVeber, 11 Sept. '27	T. Nason, jr. 28 do do	<i>Quartermaster.</i>	
E. A. Miles, 26 Oct. '28	M. Coburn, 30 Aug. '30	Z. B. Brown, 29 Mar. '25	
Jno. Brown, 24 Aug. '29	<i>Ensigns.</i>		
Jer. Tracey, 25 do do	Ter. Smith, 21 Sep. 1824	J. W. Barker, 30 Aug. '30	
W. S. Barker, 30 do '27	S. Hubble, 10 do '27		
	W. Easterbrooks, 12 do do		

**CHARLOTTE COUNTY MILITIA.**

**First Battalion.**

*Colonel.*  
**H. M'Kay**, 1 Nov. 1793  
*Lieutenant Colonel.*  
**C. Campbell**, 24 May, 1824  
*Major.*  
**D. Mowatt**, 5 Dec. '24  
*Captains.*  
**N. Marks**, 27 Aug. '21  
**Wm. Garnett**, do do  
**P. S. Frink**, 1 June '23  
**Wm. Porter**, 2 do do  
**A. Upton**, 3 do do  
**Jas. Brown**, 1 June, '24  
**Jas. Boyd**, 5 Dec. do  
**J. Armstrong**, ar. 26 Mar. '27  
**R. Lindsay**, ri. 27 do do  
**J. Libby**, 28 do do  
**J. Young**, rif. 29 do do  
**T. Connick**, 19 May, '28  
**Jos. Connick**, 2 Feb. '29  
**G. Walton**, 3 do do  
**W. Whitlock**, ar. 4 do do  
**G. M'Master**, s.f. 5 do do  
**Jno. Rodgers**, 28 Jun. '30  
*Lieutenants.*  
**G. Hunter**, 2 June '23  
**Alex. Grant**, 4 do do  
**W. Thompson**, 9 do do  
**B. Bradford**, 5 do do  
**H. M'Allister**, 27 Mar. '28  
**A. Clendenning**, 28 do do  
**G. Walton**, 30 do do  
**J. Frink**, art. 31 do do  
**A. Campbell**, 1 Apr. '27  
**W. Armstrong**, 27 Mar. do  
**Jno. Stubs**, 28 do do  
**J.H. Whitlock**, r. do do  
**J. Moore**, rif. 3 Feb. '29  
**T. Berry**, art. 4 do do  
**Jno. Grant**, 5 do do  
**J. Clendenning**, 6 do do  
**Jos. Walton**, 28 June, '30  
**J. Aymar**, s.f. do do  
*Secord Lieutenants.*  
**Jno. Porter**, 1 June, '24  
**G.F. Campbell**, r. 5 Dec. do  
**J. Maxwell**, art. 26 Mr. '27  
**Jas. Berry**, 19 May, '28  
**R. Wilson**, rif. do do  
**R. Watson**, rif. 19 May, '28  
**D. Townsend**, s.f. 3 Feb. '29  
**S.H. Whitlock**, 4 do do  
**J. Hill**, rifle, 5 do do  
**D. Upton**, 6 do do  
**D. Thompson**, 28 June, '30  
**M'Culloch**, 29 do do

*Ensigns.*

**J. Buchanan**, 1 June, '23  
**T. Crocker**, 2 do do  
**G. Porter**, 3 do do  
**C. Bartlett**, 5 Dec. '24  
**E. Wilson**, 12 Sep. '25  
**S. Hitchings**, 29 Mar. '27  
**Wm. Hill**, 30 do do  
**T. Connick**, 1 Apr. do  
**R. Hutchinson**, 2 do do  
**J. Connick**, 19 May, '28  
**J. M'Kirdy**, 2 Feb. '29  
**T. Mitchell**, 3 do do  
**S. Shearman**, jr. 4 do do  
**J. Campbell**, 15 Feb. '30  
**Wm. Walton**, 28 June, do  
**John Buckstaff**, 16 Aug. '31  
*Paymaster.*  
**J. Wilson**, cap. 2 Sep. '25  
*Adjutant.*  
**R. Mowatt**, capt.  
*Quartermaster.*  
**D. W. Jack**, 25 Oct. '28  
*Surgeon.*  
**Samuel Frye.**

**Second Battalion.**

*Lieutenant Colonel.*  
**Thos. Wyer**, 22 June, '24  
*Major.*  
**Jno. M'Master**, 5 Dec. '24  
*Captains.*  
**M. M'Farlane**, 24 July, '12  
**P. Clinch**, 1 Apr. '21  
**Neil Morrison**, do do  
**Jed. Califf**, 1 June, do  
**H. M'Leod**, 27 May, '22  
**H. Seelye**, do do  
**Jas. Pratt**, 22 July, '23  
**S. M'Farline**, 5 Dec. '24  
**J. Mowatt**, ar. 2 July, '29  
**W. Hyslopp**, 18 May, '30  
*Lieutenants.*  
**H. Mathewson**, 10 May, '24  
**S. Wallace**, 5 Dec. do  
**T. Turner**, do do  
**A. Wetmore**, 13 June, '25  
**P. Morain**, 13 do do  
**T.H. Carmau**, 26 Mar. '27  
**W. Gray**, art. 10 do '28  
**J. Missinett**, ar. 11 do do  
**J. Knight**, 13 do do  
**B. Millikin**, art. 2 July, '29  
**P. Justison**, 18 May, '30  
*Ensigns.*  
**G. M'Kenzie**, 5 Dec. '24  
**A. M'Cullum**, do do

**D. M'Farline**, 5 Dec. '24  
**W. M'Kenzie**, 13 June, do  
**Jno. Linton**, 26 Mar. '27  
**Jno. Clinch**, 27 do do  
**I. Justison**, 11 do do  
**R. Clinch**, 2 Feb. '29  
**C. Hawkins**, 18 May, '30  
*Paymaster.*  
**P. Stubs**, cap. 12 June, '26  
*Adjutant.*  
**W. Flaherty**, cp. 13 Je. '25  
*Quartermaster.*  
**P. Clinch**, lt. 26 Mar. '27

**Third Battalion.**

*Lieutenant Colonel.*  
**H. Hatch**, 13 Feb. 1826  
*Major.*  
**C.R. Hatheway**, 6 Mar. '26  
*Captains.*  
**Jno. Chaffey**, 1 Dec. '19  
**Joel Ingersoll**, 1 June, '22  
**Jno. Leeman**, 9 June, '23  
**Josiah Haney**, 12 June, '26  
**W. M'Lean**, 13 do do  
**Jas. Brown**, 3d Jan. '31  
**Wilford Fisher**, 4 do do  
**Philip Newton**, 5 do do  
*Lieutenants.*  
**D. Leeman**, 27 May, '22  
**J.E. Hatheway**, 9 June, '23  
**J. Appleby**, 12 do '26  
**John Lord**, 13 do do  
**Wm. Ferris**, 7 Sept. '29  
**Wm. Curry**, 9 do do  
**S. Ingersoll**, 2 Aug. '30  
**James White**, 3 Jan. '31  
**J. Cunningham**, 4 do do  
*Ensigns.*  
**Wm. Burke**, 30 Nov. '22  
**F. M'Kenny**, 5 Dec. '24  
**J. Leonard**, 13 June, '26  
**E. Wilson**, 7 Sep. '29  
**W. Huskins**, 8 do do  
**Ethel Smith**, 2 Aug. '30  
**Saml. Cheney**, 3 Jan. '31  
**Dan. Catcomb**, 4 do do  
*Paymaster.*  
**C. Guay**, cap. 12 June, '26  
*Adjutant.*  
**W. Hatch**, cap. 30 Nov. '22  
*Quartermaster.*  
**M. Caulkins**, 25 Oct. '28  
*Surgeon.*  
**W. C. M'Stay**, 18 May, '30

**CAVALRY.**

*Captain.*  
**Jas. Thompson**, 25 May '31

*First Lieutenant.*

**James Albce**, 23 May, '31  
*Second Lieutenant.*  
**Joel Hill**, 23 May, '31

*Cornet.*

**John Cotterel**, 23 May, '31  
*Quartermaster.*  
**William Todd**, 23 May '31

Fi  
W. Chap  
Thos. M  
R. Scott  
T. E. Sn  
Wm. Sm  
M. Wort  
J. Chapm  
Jas. Beat  
M. Summ  
E. Stiles  
Wm. Wi  
A. Never  
Li  
S. Underw  
J. Gesner  
J. Crande  
A. Smith  
R. Stiles.  
Jno. Jones  
W. Baten  
S. Babino  
J.N. Chap  
S. Weldon  
J.M'Corne  
D. Hannin  
E  
W. Wellin  
Jno. Scott  
H. Stover  
A. Crane  
J. Nelson  
S. S. Wil  
A. Steves  
J. Jacques  
Zach. Lutz  
J. Hanning  
T. Taylor,  
Pa  
J. Robinson  
A  
J. Kelly, c  
Quar  
J. Charters  
Secon  
A.E. Botsf  
C  
B. Chappe  
First  
Lieuten  
J.A. M'Do

## WESTMORLAND MILITIA.

Colonel William Botsford, Commanding.

### First Battalion.

#### Major.

W. Chapman, 10 Mar. 1828

#### Captains.

Thos. Milne, 23 Nov. '23

R. Scott, jr. 25 Aug. do

T. E. Smith, 11 June, '26

Wm. Smith, 12 do do

M. Wortman, 13 do do

J. Chapman, 19 May, '28

Jas. Beatty, do do

M. Summers, 15 do do

E. Stiles, 16 do do

Wm. Wiley, 17 do do

A. Nevers, 18 do do

#### Lieutenants.

S. Underwood, 23 Nov. '22

J. Gesner, 12 June, '26

J. Crandel, 13 do do

A. Smith, 14 do do

R. Stiles, 15 do do

Jno. Jones, 19 May, '28

W. Bateman, 15 do '29

S. Babinot, 16 do do

J.N. Chapman, 17 do do

S. Weldon, 18 do do

J.M. Cormick, 19 do do

D. Hanning, 20 do do

#### Ensigns.

W. Welling, 21 Nov. '22

Jno. Scott, 13 June, '26

H. Stover, 14 do do

A. Crane, 15 do do

J. Nelson, 19 May, '28

S. S. Wilmot, 19 do do

A. Steves, 15 do do

J. Jacques, 16 do do

Zach. Lutz, 17 do do

J. Hannington, 18 do do

T. Taylor, 19 do do

#### Paymaster.

J. Robinson, cap. 12 Jly '26

#### Adjutant.

J. Kelly, capt. 23 July, '23

#### Quartermaster.

J. Charters, ens. 20 Nov '22

### Second Battalion.

#### Major.

A. E. Botsford, 25 July, '30

#### Captains.

B. Chappell, 22 July, '23

C. D. Smith, 10 May, '24

M. M'Eachran, 4 April, '26

G. Oulton, 5 do do

M. Cornwall, 6 do do

E. Allen, 7 do do

S. Easterbrooks, 16 Jne. '28

Jas. Evans, 17 do do

W. P. Sayre, 26 do do

R. Taylor, 27 do do

W. Burnham, 30 May, '31

T. Lowerston, 31 do do

C. Botsford, do do

John Bulmer, 1 June, '31

#### First Lieutenant.

G. Hay, (art.) 30 May, '31

#### Lieutenants.

W. Raworan, 22 July, '23

Jos. Wells, 5 Apr. '26

Jno. Anderson, 6 do do

T. Ayre, 16 June, '28

R. Carter, 17 do do

H. Charters, 25 July, '30

T. Keillor, 27 do do

R. Chapman, 28 do do

T. Cochran, 29 do do

Jas. Cutler, 30 do do

G. Botsford, 31 do do

Geo. Ury, 1 Aug. do

H. Chapman, 30 May, '31

Jos. Bowser, 31 do do

Chip. Botsford, 1 June, do

#### Ensigns.

John Raworth, 10 May, '24

J. Downing, do do

G. Trenholm, 7 Apr. '26

R. Chapman, 9 do do

W. Dixon, 10 do do

Jos. Brown, 16 June, '28

John Bulmer, 17 do do

Jas. Black, 26 July '30

M. Sayre, 27 do do

Wm. Lamb, 28 do do

C. Thibodeau, 29 do do

T. Trenholm, 30 May, '31

Wm. Evans, 31 do do

Wm. Carter, 1 June, do

#### Adjutant.

D. Chapman, cap. 4 Ap. '26

#### Quartermaster.

J. Sayre, jr. 22 July, '23

#### Surgeon.

R. Smith, 1 June, '10

#### Assistant Surgeon.

M. Backhouse, 22 July, '23

### Third Battalion.

#### Major.

P. Palmer, 27 April, '24

#### Captains.

T. Pearson, 24 Nov. '22

Sam. Clark, 26 do do

N. Wells, 28 do do

W. Wilmot, 29 do do

Jno. Smith, 30 do do

J. M'Latchey, 25 Oct. '28

G. Turner, 26 do do

#### Lieutenants.

J. M'Latchey, 25 Nov. '22

E. Stiles, 27 do do

W. M'Almon, 22 Aug. '25

D. Cameron, 25 Oct. '28

E. Peck, 26 do do

Wm. Read, 27 do do

J. C. Turner, 28 do do

#### Ensigns.

G. Steeves, 25 Nov. '22

E. Peck, 27 do do

H. T. M'Almon, 22 Au. '25

J. Turner, 30 Apr. '27

D. Ackerly, jr. 25 Oct. '28

W. Kilpauick, 26 do do

T. Taylor, 27 do do

#### Adjutant.

J. Sterritt, cap. 27 Ap. '24

#### Surgeon.

Wm. Wilson, 25 Oct. '28

#### Quartermaster.

Geo. Rogers, 22 Aug. '25

### Fourth Battalion.

#### Major.

H. Chapman, 25 July, '30

#### Captains.

P. Chapman, 30 May, '31

J. Anderson, 31 do do

John Ayard, 1 June, do

Jno Trenholm, 2 do do

#### Lieutenants.

Wm. Hughson, 30 May, '31

Wm Anderson, 31 do do

Liffey Allan, 1 June, do

John Downing, 2 do do

#### Adjutant.

J. Chapman, (c) 25 July, '30

#### Quartermaster.

G. Allan, (lt.) 30 May, '31

## NORTHUMBERLAND MILITIA.

### First Battalion.

#### Major.

Jno. Clark, 2d July, 1829

#### Lieutenant Colonel.

J. A. M'Donald, 2 July, '29

#### Captains.

A. Fraser, 1 June, '22

J. M'Donald, 2 June, '22

G. Taylor, 4 do do

A. Russell, 5 do do

Jas. Gilmour, 7 do do



R. M'Leod, 8 June '22	A. Ritchie, 28 June '30	T. Smith, 11 May, '24
Jno. Joseph, 9 do do	J. Porter, 29 do do	A. Moore, 12 do do
W. Hamilton, 10 do do	J. M'Intyre, 1 July, do	A. Hovey, 13 do do
L. Henry, 4 April, '26	Wm. Douglas, 2 do do	N. Ritchie, 28 Apr. '25
D. Perley, 5 do do	D. M'Leod, 9 Aug. '31	G. Henderson, 29 do do
A. Goodfellow, 8 do do	G. Williston, 10 do do	E. M'Quillan, 12 June, '25
Wm. Gray, 28 June, '30	<i>Adjutant.</i>	H. B. Allison, 15 do do
M. Cranny, 29 do do	D. M'Donald, 9 June, '23	R. Henderson, 14 do do
John Campbell, 9 Aug. '31	<i>Quartermaster.</i>	J. Hovey, 18 May, '30
Thos. Ullock, 10 do do	J. Davidson, 9 June, '23	J. Sutton, 19 do do
<i>Lieutenants.</i>	<i>Surgeon.</i>	Geo. Kerr, 20 do do
R. M'Donald, 2 June, '22	Alex. Key, 28 June, '30	P. Brannen, 21 do do
F. Morrison, 5 do do		T. Coughlin, 22 do do
Wm. Joplin, 7 do do	<b>Second Battalion.</b>	<i>Ensigns.</i>
J. Henderson, 11 do do		W. Saunders, 19 Aug. '22
A. Henderson, 4 Apr. '26	<i>Lieutenant Colonel.</i>	J. Tozer, 9 May, '24
Andrew Hay, 5 do do	A. Davidson, 2 July, 1829	R. Wasson, 10 do do
J.T. Williston, 6 do do	<i>Major.</i>	M. Hovey, 11 do do
L. Robichaud, 8 do do	J. D. Fraser, 2 July, 1829	T. Newcomb, 13 do do
Wm. Carman, 9 do do	<i>Captains.</i>	A. Young, 29 Apr. '25
J.M. Johnson, 10 do do	Jno. Astle, 20 Aug. '13	P. Davidson, 30 do do
Jno. Fraser, 11 do do	Jno. Price, 21 do do	T. Underhill, 12 June, do
W. M'Donald, 12 do do	Alex. Fraser, 19 do '22	J. Gillan, 13 do do
D. Shaw, 28 June, '30	C. M'Donald, 20 do do	C. Coughlan, 14 do do
D. Johnson, 29 do do	W. Abrams, sf. 21 do do	J. Simpson, 16 do do
Jno. M'Lean, 1 July, do	Jared Betts, 22 do do	D. Clarke, 22 Feb. '30
Jas. Hirlhly, 9 Aug. '31	E. Fowler, 23 do do	T. Underhill, 18 May, do
And. M'Innes, 10 do do	Jno. Fraser, 1 June, '23	A. Campbell, 19 do do
<i>Ensigns.</i>	Abel Pond, 10 May, '24	L. Astle, 20 do do
J. Oshaldson, 1 June, '22	D. Croker, 11 do do	R. Jardine, 21 do do
A. Davidson, 2 do do	Wm. Loch, 25 Apr. '25	D. Mott, 22 do do
A. Morrison, 7 June, '22	B. M'Kay, 26 do do	H. Hammill, 12 Aug. '31
A. Clark, 4 Apr. '26	R. M'Laughlin, 27 do do	Michael O'Brien, do do
F. Morrison, 5 do do	J. Donald, 12 June, '27	<i>Adjutant.</i>
C. Clark, 6 do do	W. Fiddes, 18 May, '30	W. Harley, cap. 19 Au. '22
I. Paley, 7 do do	A. Duncan, 19 do do	<i>Quartermaster.</i>
W. Taylor, 8 do do	Wm. End, 20 do do	Jno. Henry, 1 June, '23
J. Stewart, 9 do do	<i>Lieutenants.</i>	<i>Surgeon.</i>
D. Fraser, 10 do do	D. Tozer, 2 June, '23	Jas. Petrie, 9 May, '24

### GLOUCESTER MILITIA.

#### First Battalion.

*Major.*  
R. Ferguson, 6 June, 1824

*Captains.*  
J. Miller, rif. 9 June, '28  
Jno. Shea, 15 June, '24  
Jas. Lee, 12 July, do  
J. Douglass, 26 do '25  
D. M'Intosh, 27 do do  
A. Ferguson, 28 Jan. '27  
W. Munro, 15 May, '29  
Jno. Fraser, 16 do do  
Benj. Dawson, 23 May, '31  
John M'Intosh, 24 do do

*Lieutenants.*  
Wm. Gray, 13 July, '24  
Wm. Craig, 13 do '25  
J. Fleming, 14 do do  
C. Commau, 15 do do  
M. Newton, 8 do '26

R. Clyde, rif. 9 Jan. '27  
W. Young, 9 Jan. '27  
R. Ferguson, jr. 26 Jan. '27  
J. Montgomery, 27 do do  
S. Waitte, 15 May, '29  
Allan Fraser, 23 May, '31  
J. Robertson, 24 do do  
A. Degrace, 25 do do

*Ensigns.*  
R. Connacher, 13 July, '25  
Jno. Edgar, 10 do do  
W. M'Kenzie, 27 Jan. '27  
D. Racarty, 29 do do  
A. M'Pherson, 16 May, '29  
N. Busted, 22 Feb. '30  
Peter Adams, 23 May, '31  
Geo. Munro, 24 do do  
J. Bopt. Roy, 25 do do

*Adjutant.*  
J. M'Pherson, cap. 11 Oct. '23

#### Quartermaster.

J. Read, lieut. 15 May, '29

#### Second Battalion.

*Major.*  
Jno. Young, 15 May, '29

*Captains.*  
M. Landrey, 13 Apr. '21  
W. Drysdall, 14 June, '24  
H. Adams, 11 July, '25  
A. Landry, 12 do do  
Jno. Adams, 13 do do  
M. Campbell, ad. 12 July, '26

*Lieutenants.*  
J. Gennie, 13 July, '28  
J. Spence, 14 do do  
R. Hixon, 12 do '24  
M. Martin, 11 July, '25  
A. Campbell, 28 Jan. '27  
P. Campbell, 29 do do

A. Loubser  
U. Landry

First

S. M'Kear  
C.

T. Powell  
J. Wheten  
D. M'Alm  
G. Pagan,  
W. Bowser  
R. Jardine  
S. C. Hew  
J. P. Ford  
T. Landow  
Lieut

A. M'Kear  
BB Goldsm  
W. Wilson  
Jona. Call  
C. Rankin,  
D. Rankin,  
P. Campbe  
S. Powell,  
S. Girvan,  
Wm. Brit  
H. M'Kay,  
E.

Jas. Pine,

First

*Lieuten*  
D.B. Wetm  
Ca  
Jno. Word  
Wm. M'Le  
Philip Dan  
J. S. Wain  
E. Flewelli  
Philip Nas  
B. B. Crawf  
Jno. Smith  
T. Botswic  
A. Price,  
*Lieut*  
W. J. Flewe  
Jer. Mabee  
Zeb. Jones  
Wm. Dicks  
T. Flewelli  
A. Hamm,  
Jos. Lyon,  
H. Belyea,  
L. Carvel,  
S. Gorum,  
Jno. Wright

**Ensigns.**  
 A. Loubser, 11 July, '25  
 U. Landry, 11 do '26

G. Sivret, 12 July '26  
*Adjutant.*  
 M. Campbell, cp. 15 My. '29

**Quartermaster.**  
 Jno. Ritchie, 15 May, '29

**KENT MILITIA.**

**First Battalion.**

**Major.**  
 S. M'Kean, 25 Oct. 1828

**Captains.**  
 T. Powell, 2 Nov. '12  
 J. Wheten, 25 Aug. '21  
 D. M'Almon, do do  
 G. Pagan, do do  
 W. Bowser, 10 May, '24  
 R. Jardine, 21 Feb. '26  
 S. C. Hewes, 24 Nov. '26  
 J. P. Ford, 25 do do  
 T. Lansdowne, ad. 25 Oct. '28

**Lieutenants.**  
 A. M'Kean, 25 Aug. '21  
 BB Goldsmith, 13 Feb. '26  
 W. Wilson, 16 Feb. '26  
 Jona. Cail, 17 do do  
 C. Rankin, 18 do do  
 D. Rankin, 19 do do  
 P. Campbell, 21 do do  
 S. Powell, 4 Apr. do  
 S. Girvan, 24 Nov. do  
 Wm. Brait, 25 do do  
 H. M'Kay, 12 June, '30

**Ensigns.**  
 Jas. Pine, 2 Nov. '12

J. M'Gregor, 17 May '24  
 J. Saunders, 18 do do  
 J. Muzeroll, 19 do do  
 R. Bell, 24 Nov. '26  
 R. Powell, 25 do do  
 W. Roach, 26 do do  
 W. Harper, 27 do do  
 P. Sutherland, 15 May, '29  
 R. Haddon, 12 June, '30  
 Jno. Craig, 13 do do  
 W. Fitzgerald, 14 do do  
 J. A. Clure, 15 do do  
 Wm. Girvan, 17 do do

**Adjutant.**  
 T. Lansdowne, 25 Oct. '28

**Quartermaster.**  
 P. Stubs, lieu. 15 May, '29

**Surgeon.**  
 R. Masterton, 13 Feb. '26

**Second Battalion.**

**Major.**  
 James Long, 23 May, '31

**Captains.**

D. Robichaud, 25 May, '31  
 W. Hannington, 26 do do  
 Ira Hicks, 27 do do  
 Pascal Porrier, 28 do do  
 Robert Dysart, 9 Aug. do  
 Syd. Chapman, 10 do do

**Lieutenants.**

Chas. Surratt, 26 Nov. '26  
 Israel Hicks, 23 May, '31  
 T. Bushea, 24 do do  
 Jacob Gerner, 26 do do  
 L. Seamonds, 27 do do  
 Wm. Ward, 9 Aug. do

**Ensigns.**

Placid Porrier, 23 May, '31  
 Jno. Sheridan, 24 do do  
 J. Thibodeau, 25 do do  
 Ira Hicks, jr. 27 do do  
 E. Atkinson, 28 do do  
 P. M'Phelim, 9 Aug. do  
 P. A. Purdy, 10 do do

**Adjutant.**  
 A. B. Smith, c. 23 May, '31

**KING'S COUNTY MILITIA.**

**First Battalion.**

**Lieutenant Colonel.**  
 D. B. Wetmore, 16 Jne. '28

**Captains.**  
 Jno. Worden, 1 Feb. '10  
 Wm. M'Leod, 27 May, '22  
 Philip Dann, do do  
 J. S. Wetmore, do do  
 E. Flewelling, 10 May, '24  
 Philip Nase, 29 Apr. '27  
 B. B. Crawford, 30 do do  
 Jno. Smith, 19 May, '28  
 T. Botswick, 25 Oct. '28  
 A. Price, 26 do do

**Lieutenants.**  
 W. J. Flewelling, 27 My, '22  
 Jer. Mabce, do do  
 Zeb. Jones, do do  
 Wm. Dickson, do do  
 T. Flewelling, 28 Apr. '27  
 A. Hamm, 29 do do  
 Jos. Lyon, 30 do do  
 H. Belyea, 10 May, '24  
 L. Carvel, 9 Apr. '25  
 S. Gorum, 25 Oct. '28  
 Jno. Wright, 26 do do

**Ensigns.**

J. Flewelling, 27 May, '22  
 P. M'Kenzie, 11 Oct. '23  
 Jas. Price, 10 do do  
 Jas. Williams, 28 Apr. '27  
 G. Worden, 29 do do  
 Jas. Reid, 50 do do  
 Geo. Neal, 19 May, '28  
 N. Warren, 25 Oct. '28  
 I. H. Foster, 26 do do

**Adjutant.**  
 D. Wetmore, cap. 1 My. '27

**Quartermaster.**  
 D. Mather, lt. 25 July, '30

**Second Battalion.**

**Major.**  
 J. C. Vail, 24 Nov. 1826

**Captains.**  
 S. Freeze, 11 Oct. '23  
 O. Barbarie, 24 Nov. '26  
 Jno. Cogle, 25 do do  
 J. M'Arthur, 26 do do  
 S. Goslin, 27 do do  
 Jas. Ryan, 28 do do  
 O. B. Cogle, 30 May, '31

**Lieutenants.**

S. M'Kully, 11 Oct. '23  
 W. Barbarie, 23 Nov. '26  
 D. Sheck, 26 do do  
 A. Johnston, 27 do do  
 R. M'Monagle, 25 Aug. '23  
 C. Stockton, 2 July, '29  
 Jno. M'Lean, 3 do do  
 I. Parlee, 30 May, '31

**Ensigns.**

S. Cleveland, 11 Oct. '23  
 M. Frazee, 25 Nov. '26  
 G. Dunfield, 26 do do  
 J. Gidney, 28 do do  
 Jno. Bupe, 2 July, 1829  
 G. Morton, 3 do do  
 X. Cogle, 4 do do  
 W. Coates, 12 June, '30  
 Wm. Teskels, 30 May, '31

**Paymaster.**  
 Jno. Maaten, 6 Mar. '26

**Adjutant.**  
 J. Barberie, cap. 25 Au. '23

**Quartermaster.**  
 Jas. Hoyt, 11 Oct. 1829

**Third Battalion.**

*Major.*

C. Wetmore, 12 June, '30

*Captains.*

J. Hughson, 25 Aug. '23  
 A.C. Evanson, 25 do do  
 J. Davis, 10 May, '24  
 J. Humbert, rif. 5 Sep. '25  
 T. Fairweather, 12 Jne, '26  
 S. Fairweather, 14 do do  
 J. Upham, 14 Sep. '29  
 Wm. Giou, 12 June, '30  
 J. Wetmore, 13 do do  
 A. Ketchum, 25 July, do  
 W. Gunter, 25 Oct. do  
 T. S. Demill, 12 July, '81  
 Thos. Curry, 13 do do

*Lieutenants.*

J. Fairweather, r. 12 Dr. '25  
 J. M'Donald, 12 June, '26  
 S. White, 13 do do  
 S. Sprague, 14 do do  
 Wm. Frost, 15 do do  
 G. Sprague, 17 do do  
 H. A. Demill, 14 Sep. '29  
 A. Dickie, rif. '2 Feb. '30  
 B. Cromwell, r. 23 do do  
 Jno. Hays, 11 June, do  
 T. Dixon, 12 do do  
 J. Sediquiest, 13 June, '30  
 J. M'Creedy, 14 do do  
 M. Fowler, 25 July, do  
 W. Dehow, 25 Oct. do  
 J. Wanasaker, jr 12 Jul '31  
 Caleb Davis, jr. 13 do do

*Ensigns.*

P. Marvin, 10 May, '24  
 J. E. Davis, 13 June, '26  
 G. Hughson, 14 do do  
 S. Hoyt, 15 do do  
 J. M. Fowler, 14 Sep. '29  
 H. Dickie, jr. 12 June, '30  
 C. E. Smith, 13 do do  
 J. F. Sherwood, 25 Oct. '30  
 E. Watmore, 12 July, '31  
 Robt. Spragg, 13 do do

*Adjutant.*

A. English, cap. 25 Aug. '23

*Quartermaster.*

Azor Hoyt, 5 Sept. '25

*Surgeon.*

C. Wilson, 12 June, '26

**QUEEN'S COUNTY MILITIA.**

Lieutenant-Colonel Harry Peters, Commanding.

**First Battalion.**

*Lieutenant Colonel.*

H. Peters, 20 June, 1825

*Major.*

Wm. Foshay, 20 Aug. '27

*Captains.*

S. Golding, 1 June, '23  
 T. Hewlet, 6 do do  
 R. Golding, ad. 25 May, '24  
 A. Smith, 20 Aug. '27  
 D. Smith, 21 do do  
 H. Lyons, 22 do do  
 J. Corbet, 23 do do  
 A. Gunter, 25 July, '30  
 M. Peters, 26 do do  
 C. Smith, 7 Sep. '30

*Lieutenants.*

R. Smith, jr. 21 June '25  
 Jno. Belyea, 22 do do  
 J. Colwell, 20 Aug. '27  
 H. Babbitt, 21 do do  
 B. Hewlett, 25 July, '30  
 J. Graham, 27 do do  
 R. Dingee, 7 Sep. '30  
 Thos. Clarke, 22 Aug. '81  
 R. Hewlett, 23 do do  
 Geo. Vail, 24 do do

*Ensigns.*

O. Sterritt, 21 June, '25

T. Golding, 22 June '25  
 S. Currie, 20 Aug. '27  
 Jno. Glass, 21 do do  
 A. Merritt, 26 July, '30  
 F. Wood, 29 do do  
 I. DeVeber, 7 Sept. '30  
 John Currie, 22 Aug. '51  
 Ass Smith, 23 do do  
 T. Graham, 24 do do

*Adjutant.*

R. Golding, 27 Apr. '24

*Paymaster.*

N.H. DeVeber, 24 Aug. '29

*Surgeon.*

R. P. Smith, 24 Aug. '29

*Quartermaster.*

E. Smith, 16 June, 1816

**Second Battalion.**

*Major.*

P. Yeamans, 25 May '31

*Captains.*

Jno. Earle, 7 June, '23  
 J. M'Lean, 8 do do  
 A. Flowers, 10 do do  
 J. Seacord, 20 Aug. '27  
 J. M'Allister, 21 do do

S. White, 30 Aug. '30  
 J. Humphreys, 31 do do  
 A. Branscomb, 26 July, '31  
 Jas. Butler, 27 do do

*Lieutenants.*

T. Belyea, 6 June, '23  
 J. Calkins, 10 do do  
 L. M'Lean, 11 do do  
 C. L. Corey, 20 Aug. '27  
 J. M'Donald, 22 do do  
 H. Briggs, 31 do do  
 J. Keith, 1 Sep. do  
 Peters Cox, 26 July, '31  
 Robt. Yeamans, 27 do do

*Ensigns.*

A. M'Donald, 4 June, '23  
 T. Corey, 7 do do  
 E. Stone, 9 do do  
 D. Stilwell, 10 June, '23  
 A. Corey, 20 Aug. '27  
 J. Shearer, 21 do do  
 Geo. Currie, 31 do do  
 W. Alwood, 1 Sep. do  
 J. M'Donald, 26 July, '31  
 E. Briggs, 27 do do

*Adjutant.*

J. M'Donald, cp. 20 Au. '27

*Quartermaster.*

D. Palmer, 20 Aug. 1827

**RECIPES—For Drunkenness.**—Whenever you feel an inclination to drink spirituous liquors, drink cool fresh water. Adhere strictly to this direction, and even if you be the greatest drunkard, you will become a temperate, sober man.

**For the Gout.**—Wear oil-silk stockings over fine worsted ones, day and night, which infallibly cures it.

OFFI

Comm

Acting

Se

Se

Co

Se

Ju

Se

Ju

On

Li

A

Marcus

J. A. M'

Jacob A

Andrew

B. R. J

H. M. G

John M'

King

R. C. M

Chas. W

To His

G. C. I

vince c

The Peti

That h

as the ca

for a Lic

vacant C

The T

employed

to disti

That

made by

Timber,

**OFFICE OF COMMISSIONER AND SURVEYOR GENERAL  
OF CROWN LANDS AND FORESTS.**

*Commissioner and Surveyor General*—Hon. Thomas Baillie, (at present in London,)

*Acting do do.*—John A. Beckwith, Esquire.

<i>Senior Clerk and Recorder</i>	Henry A. Vavasour,
<i>Senior Draftsman,</i>	Anthony Lockwood,
<i>Cashier,</i>	William N. Akerley,
<i>Senior Assistant Draftsman,</i>	John R. Roberts,
<i>Junior do do</i>	John White,
<i>Senior Assistant Clerk,</i>	R. T. Edghill,
<i>Junior do do</i>	R. D. M'Brien,
<i>Office Keeper,</i>	Stephen White,
<i>Lithographer,</i>	Timothy O'Connor.

**DEPUTIES :**

*Attached to the Office,*

Marcus Scully and Daniel J. Estey.

*York County,*

J. A. M'Lauchlan, John Davidson,

Jacob Allan, M. O'Connor,

Andrew Blair, Wm. M'Donald,

B. R. Jouett, I. W. Jouett,

H. M. G. Garden.

*Queen's County.*

John M'Donald & H. B. Rainsford.

*King's & St. John Counties.*

R. C. Minnette, S. Fairweather, Rich M'Laughlin, C J Peters, jr

Chas. Whitney, W F J Barberie. John M'Donald.

*Charlotte County,*  
Geo. N Smith and Hugh Flaherty.

*Westmorland County,*  
Chas D M'Cardy, Samuel Wilmot,  
Philip Palmer, R Stiles.

*Kent County,*  
Alfred L Layton.

*Northumberland County.*  
William Harley, Joseph Hunter,  
Wm J Layton, L B Rainsford,

James Davidson.

*Gloucester County,*  
Rich M'Laughlin, C J Peters, jr  
John M'Donald.

**FORM OF PETITION FOR TIMBER.**

To His Excellency Major-General Sir ARCHIBALD CAMPBELL, Bart.  
G. C. B., Lieutenant-Governor and Commander-in-Chief of the Province of New-Brunswick, &c. &c. &c.

The Petition of \_\_\_\_\_ of the Parish of \_\_\_\_\_ in the County of \_\_\_\_\_ humbly sheweth :

That he is *bona-fide* a British subject, and a freeholder (or resident, as the case may be) in the Province of New-Brunswick—that he prays for a Licence to cut and carry away \_\_\_\_\_ tons of Timber, from vacant Crown Lands, situate as follows :

The Timber now applied for will be cut by petitioner, or by persons employed by him to make said Timber, and the mark he intends to use to distinguish the same is as follows : (Mark)

That he pledges himself to conform in all things to the regulations made by Government to be observed by applicants for Licence to cut Timber, and that he is not directly or indirectly connected in the cutting

of the said Timber, nor does he intend to be, with any alien whatever. And as in duty bound will ever pray.

(Signature of applicant.)

N. B.—No petition will be received in which there is any interlineation or erasure, either in the description of the land, the quantity of timber, or the mark.

FORM OF EMIGRANT LAND PETITION.

To His Excellency Major-General Sir ARCHIBALD CAMPBELL, Bart. G. C. B., Lieutenant-Governor and Commander-in-Chief of the Province of New-Brunswick, &c. &c. &c.

The Petition of humbly sheweth :

That he is a British subject, a native of has not resided eighteen months in this Province, is a married man with a family of children, whom he is unable to support unless he can obtain Land to settle thereon; that he has not sufficient funds to pay the first instalment and location money on one hundred acres of Land, nor has he any way to procure such funds; he therefore prays that the vacant and unimproved one hundred acre Lot No. situate

be located to him, on the usual conditions; and that it is his intention to furnish the necessary certificates of settlement in one year, and pay the first instalment and location money in two years from this date, and to comply with all other regulations relative to purchasers of Crown Land. And he will, as in duty bound, ever pray.

FORM OF PETITION TO PURCHASE.

To His Excellency Major-General Sir ARCHIBALD CAMPBELL, Bart. G. C. B., Lieutenant-Governor and Commander-in-Chief of the Province of New-Brunswick, &c. &c. &c.

The Petition of of the Parish of County of humbly sheweth :

That he is a British subject, and is desirous of purchasing acres of Land, situate as follows :

That the said Land is in its natural wilderness state, no improvements whatever having been made thereon;

That he intends to settle and improve the same forthwith, and to comply in all respects with the Royal instructions; and as in duty bound will ever pray,

On the day of 183 before me Esquire, one of His Majesty's Justices of the Peace for the County of personally appeared the above-named and made oath that the several matters set forth in the above petition are true.

SUPERVISORS OF GREAT ROADS.

James A. M'Launchlan, Esquire, from Fredericton to the Canada line. George Hayward, Esquire, from Fredericton to St. John, by the Nepis, and from the short Ferry at Bailey's to the Finger Board.

Ca  
Ge  
Th  
Ben  
Joh  
Am  
L. I  
Ale  
Joh  
Ale  
Duc  
Joh  
Willa  
Wm. I  
  
JOHN  
  
Charle  
Wm. E  
G.F.C  
T. Arn  
Gideon  
Thoma  
  
Days  
Mon  
We  
  
Fro  
For  
  
For  
THU  
SAT  
  
Fro  
For  
  
For  
  
Mail  
closed  
West  
a single  
cannot

Caleb Wetmore, Esquire, from the head of Bellisle to the head of the Saint John Marsh.

George Anderson, Esquire, between Carleton and Magaguadavic.

Thomas Wyer, Esquire, between Magaguadavic and Saint Andrews.

Benjamin L. Peters, Esquire, from Saint John to Hammond River.

John C. Vail, Esquire, from Hammond River to Westmorland.

Amos C. Botsford, Esq. from King's County line to the Missiguash.

L. B. Rainsford, Esquire, from Fredericton to Northumberland.

Alexander Goodfellow, Esquire, from Newcastle to Forien's.

John Reid, Esquire, from Forien's to Restigouche.

Alexander Goodfellow, and } between Chatham and Richibucto.

Dudley Perley, Esquires, }

John W. Weldon, Esquire, from Richibucto River to Chediac.

William Hannington, sen. and } between Chediac & Bend of Peticodiac,

Wm. Hannington, jun. Esq's. } and from Chediac to Dorchester.

## POST-OFFICE DEPARTMENT.

JOHN HOWE, Junior, Esquire, Deputy Post-Master General for Nova-Scotia and New-Brunswick.

### POST-MASTERS IN NEW-BRUNSWICK.

Charles Drury, Esq. *Saint John,*

Wm. B. Phair, Esq. *Fredericton,*

G.F. Carphell, Esq. *St. Andrews,*

T. Armstrong, Esq. *St. Stephen,*

Gideon Knight, Esq. *St. George,*

Thomas Keillor, Esq. *Dorchester,*

William Wiley, Esq. *Peticodiac,*

James Caie, Esq. *Miramichi,*

Asa Davidson, Esq. *Kingston,*

John O'Neil, Esq. *Sussex Vale,*

John W. Weldon, Esq. *Liverpool,*

T. M. DeBlois, Esq. *Bathurst.*

*Days of arrival of the Mails at, and departure from, Saint John, New-Brunswick :*

**MONDAY**—For Fredericton and Canada, by the Nerepis, at 11 A. M.

**WEDNESDAY**—From Halifax, Windsor, Kentville, Annapolis, Digby, Yarmouth, and Shelburne, by the Digby packet.

From St. Andrews, St. George, and the United States, at noon.

For Halifax, Pictou, Miramichi, Richibucto, Cumberland, Dorchester, Sussex Vale, and Kingston, at 1, P. M.

For St. Andrews, St. George, and the United States, at 7, P. M.

**THURSDAY**—From Fredericton and Canada, at 11, A. M.

**SATURDAY**—From Halifax, Pictou, Miramichi, Richibucto, Cumberland, Dorchester, Sussex Vale, and Kingston, at 10, A. M.

From St. Andrews, St. George, and the United States, at noon.

For Digby, Annapolis, Kentville, Windsor, Halifax, Yarmouth, and Shelburne, by the Digby packet, at 4, P. M.

For St. Andrews, St. George, and the United States, at 7, P. M.

Mails are also forwarded by the steam boats, during the season, and closed the evening previous to their departure.

The inland postage on all letters for Europe, Newfoundland, the West-Indies, and the United States, must be paid, at the rate of 9d. for a single letter, and so in proportion for a double or treble packet, or they cannot be forwarded.

## FREDERICTON SOCIETY OF SAINT ANDREW.

Peter Fraser, Esquire, *President*,  
James Taylor, Senior, Esquire, *Vice-President*,  
Reverend James Somerville, L L D. *Chaplain*,  
Mr. John F. Taylor, *Treasurer*,  
Mr. John Gregory, *Secretary*.



## FREDERICTON SOCIETY OF SAINT PATRICK.

Honorable Thomas Baillie, *President*,  
George Minchin, }  
Thomas L. Langen, } *Esquires*, } *Vice-Presidents*,  
Mr. Joseph Beck, *Treasurer*,  
Mr. Matthew Brannen, *Secretary*,  
Mr. Stephen White, *Assistant Secretary*.



## FREDERICTON SOCIETY OF SAINT GEORGE.

Honorable John Saunders, *President*,  
Honorable George Shore, }  
Charles J. Peters, } *Esquires*, } *Vice-Presidents*,  
George F. Street, }  
Venerable Archdeacon Coster, } *Chaplains*,  
Reverend Edwin Jacob, D. D. }  
George F. S. Street, Esquire, *Treasurer & Secretary*.



## FREDERICTON UNION FIRE CLUB.

Mr. Thomas R. Robertson, *President*,  
John A. Beckwith, Esquire, *Vice-President*,  
Mr. Francis E. Beckwith, *Treasurer & Secretary*.



## FREDERICTON LIBRARY.

Reverend Dr. Somerville, *President*,  
George F. Street, Esquire, *Vice-President*,  
Reverend George M. Cawley, }  
Henry G. Clapper, } *Esquires*, } *Committee*,  
Thomas L. Langen, }  
Henry G. Clapper, Esquire, *Secretary & Treasurer*,  
John Baird, *Librarian*.



## FREDERICTON TEMPERANCE SOCIETY.

William J. Esry, *President*,  
William M. Kay, }  
Thomas Pickard, } *Vice-Presidents*,  
Thomas Smith, }  
John T. Smith, *Treasurer*,  
Francis Dewarby, *Secretary*.

W.

CK.

GE.

ry.

er,

Y.

275. Berton -



FR

FR

FF

RO

Charles  
 William  
 Thomas  
 Harris  
 William  
 John Sh  
 John S  
 John A  
 Robert  
 George  
 Henry S  
 John T  
 William  
 George  
 Neville  
 Alfred L  
 Charles  
 Daniel  
 Edward  
 George  
 James P  
 Alexand  
 Robert S  
 George  
 William  
 John Lo  
 Charles  
 Abraham  
 George  
 Francis  
 William  
 Robert  
 Le Baro  
 John W  
 Francis  
 William  
 Robert  
 William  
 Peter S  
 Horatio  
 William  
 James S  
 John M  
 William  
 Moses  
 Timothy  
 Edward  
 Andrew

## ROLL OF BARRISTERS, &c. IN NEW-BRUNSWICK

NAMES.	Admitted Attornies.	Sworn & enrol- led Barristers.	No. of Stu- dents.
Charles Jeffrey Peters, - -	16 July 1794	24 May 1823	3
William Franklin Odell, - -	18 July 1804	5 July 1806	
Thomas Horsfield Peters, - -	8 Oct 1806	17 Feb. 1819	2
Harris Hatch, - - -	2 Feb 1808	17 Feb. 1819	1
William Tyng Peters, - -	17 Feb 1814	24 May 1823	
John Shannon Morse, (non-residt.)	19 Feb 1814	19 Feb. 1814	
John Simcoe Saunders, - -	18 Feb 1817	18 Feb. 1819	
John Ambrose Sharman Street, - -	22 Feb 1817	14 Oct. 1819	1
Robert Parker, - - -	14 Oct 1817	12 July 1820	
George Frederick Street, - -	15 July 1818	12 July 1820	4
Henry Street, - - -	15 July 1818	21 May 1823	1
John Thomas Murray, - -	17 Feb 1819	25 Feb. 1823	
William Boyd Kinnear, - -	18 May 1819	24 May 1823	3
George Pidgeon Bliss, - -	13 July 1819	24 May 1823	
Neville Parker, - - -	14 July 1819	15 Oct. 1821	2
Alfred Lock Street, - - -	11 Oct. 1820	24 May 1823	1
Charles Samuel Putnam, - -	11 Oct. 1821	14 Oct. 1823	1
Daniel Ludlow Robinson, - -	11 Oct. 1821	14 Oct. 1823	2
Edward Barron Chandler, - -	11 Oct. 1821	14 Oct. 1823	1
George Stilnan Hill, - - -	11 Oct. 1821	16 July 1830	3
James Peters, junior, - - -	12 Oct. 1821	18 May 1824	1
Alexander Stewart, (non-resident)	20 Feb. 1822	18 May 1824	1
Robert Samuel Mowat, - - -	23 May 1822	14 Feb 1830	
George William Cleary, - - -	10 Oct. 1822	12 Oct. 1824	
William End, - - -	20 Feb 1823	17 Feb 1824	1
John Lobban, - - -	22 Feb 1823		
Charles Peters Wetmore, - -	11 July 1823	14 July 1825	0
Abraham Kiersted S. Wetmore,	18 Oct. 1823	19 Oct. 1825	
George Jarvis Dibblee, - -	18 Oct. 1823	19 Oct. 1825	3
Francis Andrew Kinnear, - -	18 Oct. 1823	19 Oct. 1825	
William Wiley, - - -	17 July 1824	17 July 1826	
Robert Fraser Hazen, - - -	16 Oct. 1824	20 Oct. 1826	
Le Baron Hazen, - - -	16 Oct. 1824	20 Oct. 1826	2
John Wesley Weldon, - - -	21 May 1825	21 May 1827	
Francis Ebenezer Putnam, - -	16 July 1825	16 July 1827	2
William Wright, - - -	16 July 1825	16 July 1827	1
Robert Robertson, junior, - -	23 July 1825		
William Carman, junior, - -	15 Oct. 1825	5 Feb 1828	
Peter Stubs, junior, - - -	23 Feb 1826	10 July 1828	
Horatio Nelson Hicks Lugin,	25 Feb 1826	18 Oct. 1828	
William Simpson, - - -	20 May 1826	10 July 1828	
James Stewart, - - -	24 Feb 1827	5 Feb 1829	3
John Morris Robinson, - - -	10 May 1828	10 May 1830	
William Merritt, - - -	10 May 1828		
Moses Henry Perley, - - -	12 July 1828	16 July 1830	
Timothy Robert Wetmore, - -	14 July 1828	16 July 1830	
Edward Betts Smith, - - -	18 Oct. 1828	14 Oct. 1830	
Andrew Barbarie, - - -	18 Oct. 1828	5 Feb 1831	

**ROLL OF BARRISTERS, &c. IN NEW-BRUNSWICK,  
(CONTINUED.)**

NAMES.	Admitted At- tonies.	Sworn & enrol- led Barristers.	No. of Stu- dents.
William Chandler, - - -	18 Oct. 1828	5 Feb 1831	
Samuel Hallett Whitlock, - - -	18 July 1829	16 July 1831	
James Watson Chandler, - - -	16 Oct. 1829	16 Oct. 1829	
George Kerr, - - -	17 Oct. 1829		
Robert Leonard Hazen, - - -	17 Oct. 1829	18 Oct. 1831	
George Frederick Street Berton, - -	6 Feb 1830		
Robert Hazen Peters, - - -	10 May 1830		
Richard Sands, junior, - - -	17 July 1830		
Lemuel Allen Wilmot, - - -	17 July 1830		
Samuel George Andrews, - - -	17 July 1830		
Richard Carman, - - -	16 Oct 1830		
Daniel Hailes Smith, - - -	16 Oct 1830		
John Johnston, - - -	5 Feb 1831		
Charles Fisher, - - -	5 Feb 1831		
Charles Botsford, - - -	7 May 1831		
James William Boyd, - - -	16 July 1831		
Nathaniel Merrill Hazen, - - -	16 July 1831		
James Smith Sayre, - - -	15 Oct 1831		
George Wheeler, - - -	15 Oct 1831		

**ESTIMATED POPULATION OF THE CANADAS,**

AT THE SEVERAL PERIODS BELOW STATED.

Lower Canada, in 1805,	256,000	Upper Canada, in 1805,	80,000
"	1815, 363,500	"	1815, 126,500
"	1825, 513,000	"	1825, 216,000
"	1830, 624,000	"	1830, 274,000



**POPULATION OF THE UNITED STATES,**

ACCORDING TO THE CENSUS TAKEN IN 1830.

Maine, - - -	399,469	South Carolina, - - -	581,458
New Hampshire, - - -	269,533	Georgia, - - -	516,504
Massachusetts, - - -	610,014	Kentucky, - - -	688,844
Rhode Island, - - -	97,210	Tennessee, - - -	684,822
Connecticut, - - -	297,711	Ohio, - - -	937,879
Vermont, - - -	280,679	Indiana, - - -	341,582
New-York, - - -	1,918,508	Mississippi, - - -	136,806
New-Jersey, - - -	320,779	Illinois, - - -	157,575
Pennsylvania, - - -	1,347,672	Louisiana, - - -	215,791
Delaware, - - -	76,729	Missouri, - - -	140,084
Maryland, - - -	446,918	Alabama, - - -	309,206
District of Columbia, - - -	39,588	Michigan, - - -	81,126
Virginia, - - -	1,211,266	Arkansas, - - -	30,333
North Carolina, - - -	722,470	Florida, - - -	24,725

K,

No. of  
Stu-  
dents.

1.

DAS,

80,000  
126,500  
216,000  
274,000

S,

581,458  
516,504  
688,844  
684,822  
987,879  
841,582  
186,806  
157,575  
215,791  
140,084  
309,206  
81,126  
80,833  
24,725

Michaelmustern 1832 -

C. P. Deetmore & W. A. Needham  
entered into Co partnership -  
Hilly Place: Firm of Deetmore & Needham  
broke up

S  
J  
C  
H  
E  
H  
S  
H  
I  
J  
C  
C  
J  
N  
M  
G

L

M  
N  
M  
R  
C  
V  
N  
N  
P  
D  
M  
D  
V  
N

Al  
Geo  
Dan  
Tho  
Tho  
Wil  
Geo

John R  
James H  
James V  
Mr. Jos  
Edward  
Rowland  
Munford, son, Willie  
Elvy, Job  
Harding, Ebenezer  
Fearerbey, John Sherr  
Thomas  
Hog Reave  
Ezekiel  
Nehemiah  
Nehemiah  
Strange, James H  
of Nightly  
Nehemiah  
vitt, William  
sors of Ste  
Thomas  
Thomas  
Robert  
Seeth S  
Seeth S  
Seeth S  
Thomas  
Thomas  
Stephen  
Benjamin

# CITY OF SAINT JOHN.

Lauchlan Donaldson, Esquire, Mayor.  
William B. Kinnear, Esquire, Recorder.

ALDERMEN.	ASSISTANTS.	WARDS.
<p>George Harding, Daniel Ansley, Thomas Harding, Thomas Sandall, William Olive, George Bond,</p>	<p>Mr. Isaac Woodward, Solomon Nichols, James T. Hanford, Ewen Cameron, Joseph Ketchum, John Ring,</p>	<p><i>Kings.</i> <i>Queens.</i> <i>Dukes.</i> <i>Sidneys.</i> <i>Guys.</i> <i>Brooks.</i></p>

}

Esquires.

John R. Partelow, Esquire, Treasurer or Chamberlain.

James Peters, Junior, Esquire, Common Clerk.

James W. Boyd, Esquire, Deputy Common Clerk.

Mr. Joshua Bunting, High Constable.

Edward Bennison and Lewis Fayweather, Marshalls.

Rowland Bunting, Lawrence Stivers, Benjamin Herrington, William Munford, John Chase, John M<sup>r</sup> Arthur, Robert W. Nowlan, Hugh Wilson, William Fearerby, Robert Riley, Lewis Fayweather, Robert M<sup>r</sup> Elvy, John C. Littlehale, William Clukes, John Sherrard, Thomas Harding, Constables.

Ebenezer Herrington, Benjamin Herrington, Rowland Bunting, Wm. Fearerby, Lawrence Stivers, Robert W. Nowlan, William Clukes, and John Sherrard, Hog Reeves.

Thomas Harding, John W. Clarke, Jacob Henry, and Joseph Coram, Hog Reeves at Carlton.

Ezekiel Barlow, John Ward, William Leavitt, Thomas Rayleigh, Nehemiah Merritt, and Isaac Woodward, jun. Port Wardens.

Nehemiah Merritt, William Leavitt, John V. Thurgar, and Samuel Strange, Assessors of Taxes.

James Kirk, William H. Street, and Thomas T. Hanford, Assessors of Nightly Watch Tax.

Nehemiah Merritt, John V. Thurgar, James O. Betts, William Leavitt, William Andrews, William Hewitt, and Samuel Strange, Assessors of Statute Labour.

Thomas Baldwin, Collector of Taxes.

Thomas Coram, Collector of Taxes at Carleton.

Robert James, inspector of cord wood.

Seeth Seely, collector of slippage and wharfage.

Seeth Seely, measurer of grain, coals, and salt.

Seeth Seely, weigher of hay.

Thomas Robson, Collector of wharfage at the Breakwater.

Thomas Robson, harbor master.

Stephen Humbert, collector of anchorage.

Benjamin Chaloner, city gauger.

Henry Long, inspector of wood and collector of slippage at the Lower Cove.

Joshua Bunting, fence viewer.

Samuel Clarke, fence viewer at Carleton.

Robert C. Minnette, city surveyor.

Messrs. John Kerr, Elisha DeW. Ratchford, John V. Thurgar, J. & H. Kinnear, John Robertson, James T. Hanford, and Seely & Patten, licensed auctioneers.

John Boyd, M. D. Henry Cook, and George J. Harding, M. D., Visiting Physicians.

Thomas Reed, Esq. (*King's Pilot*), James Reed, Esq. John Whightman, John Reed, Francis Leavitt, junr. Abraham Beattie, Daniel Hatfield, John Leavitt, George Thomas, John S. Anthony, Benj. Dalton, John Woodley, Alexander Mills, J. Leavitt, junior, John Murray, and John Mills, branch pilots.

James Reed, Esquire, Keeper of Partridge Island Light House.

George Lane, keeper of the Beacon Light House.

Robert W. Nowlan, pound keeper.

Thomas Harding, ditto at Carleton.

Stephen Gerow, Surveyor of the North Slip.

Samuel Jordan, Lyman Childs, Alexander M<sup>c</sup>Grotty, Thomas Trafton, Jacob Snider, Joseph Fayerweather, John M. Campbell, John Sherard, Robert L. Harris, George Bond, David Whiting, Thomas Booth, Lewis Fairweather, D. O. Sullivan, John Wilson, surveyors of lumber.

William Barlow, Charles Kay, Archibald White, George Waterbury, John Shiels, James Bowen, and John Valley, inspectors of lathwood, staves, hoop-poles, &c.

George Waterbury and William Barlow, cullers of dried fish.

William Dunham, John Shiels, James Bowen, John Dunn, Thomas Miles, Charles Kay, Patrick Shalles, William Barlow, and J. Ketchum, inspectors of pickled fish for the east side of the harbour.

Cornelius Nice, Jacob Sherwood, James F. Lilly, Abner Hampton, Thomas Theall, George Dukeshire, and Daniel L. Dykeman, inspectors of pickled fish on the west side of the Harbour.

John Kerr, T. L. Nicholson, and Thos. Lockey, overseers of the poor. James O. Betts, Keeper of the Alms House.

Robert F. Hazen, Moses H. Perley, and John S. Clarke, trustees of schools.

David Waterbery, chief engineer of fire engines.

George Waterbery, assistant engineer of fire engines.

### *Firewardens on the Eastern side of the Harbour.*

John M. Wilmot, Daniel Ansley, John Ward, junr. Thomas Harding, John R. Partelow, Thomas Heaviside, Thomas Sandall, Gregory Van Horne, Robert Robertson, William Tyng Peters, A. S. Perkins, Daniel Smith, George Harding, George D. Robinson, and John Robertson.

### *Firewardens on the Western side of the Harbour.*

Tristram Ring, James F. Lilly, and Joseph Ketchum.

## SAINT JOHN SOCIETY LIBRARY.

William Scovil, Esquire, President  
James White, Esquire, Vice-President  
Thomas Millidge and George D. Robinson, Esq's. Committee  
Robert F. Hazen, Esquire, Secretary and Treasurer.  
Mr. Anthony R. Truro, Librarian

Library hours from twelve to one o'clock, every day.



## CHAMBER OF COMMERCE.

Lauchlan Donaldson, Esquire, Chairman  
William Walker, Esquire, } Deputy Chairmen.  
James Kirk, Esquire, }

Isaac Woodward, junior, Esquire, Secretary and Treasurer

William Leavitt, John Kinneer, James T. Hanford, T. L. Nicholson,  
and S. L. Lugin, Esquires, Ordinary Members of the Committee.

The above Gentlemen, together with the Members of the House of Assembly for the City and County (being the non-elective part,) compose the Committee for the ensuing year.



## SAINT GEORGE'S SOCIETY.

Henry Bowyer Smith, Esquire, President  
Robert F. Hazen, Esquire, Vice-President  
Thomas Sandall, Esquire, Treasurer  
John J. Roberts, Esquire, Secretary.



## SAINT ANDREW'S SOCIETY.

John Boyd, Esquire, M. D. President  
Mr. John Robertson, Vice-President  
Mr. James Robertson, Treasurer  
Mr. John Moyes, Secretary.



## SAINT PATRICK'S SOCIETY.

Major John Gallagher, President  
S. G. Hamilton, Esquire, Vice-President  
Francis A. Kinnear, Esquire, Treasurer  
Mr. James M'Cleery, Secretary  
Mr. Samuel Thompson, Assistant ditto.



## ALBION SOCIETY.

Mr. George Bragg, President  
Mr. William Scammell, Vice-President  
Mr. George Ball, Treasurer  
Mr. Thomas L. Taylor, Secretary.



## BRITISH AMERICAN SOCIETY.

John Ward, Esquire, *President*  
Nehemiah Merritt, } *Esquires, Vice-Presidents*  
Stephen Humbert, }  
Daniel Leavitt, Esquire, *Treasurer*  
Mr. Simeon L. Lugin, *Secretary.*

## PHIL-HARMONIC SOCIETY.

John Boyd, Esquire, *M. D. President*  
Daniel Jordan, Esq. *Vice-President*  
H. N. H. Lugin, Esquire, *Treasurer*  
Mr. John D. M'Intyre, *Secretary*  
Mr. A. Corry, *Conductor.*

## TEMPERANCE SOCIETY.

*President*—Reverend Benjamin G. Gray, *D. D.*  
*Vice-President*—William B. Kinnear, *Esquire*  
*Secretary*—Alexander M'Leod, *Esquire.*

## FRIENDLY FIRE CLUB.

Robert W. Crookshank, Esquire, *President*,  
James Hendricks, Esquire, *Vice-President*,  
Thomas L. Nicholson, Esquire, *Secretary and Treasurer.*

## UNION FIRE CLUB.

Daniel Leavitt, Esquire, *President*,  
Benjamin L. Peters, Esquire, *Vice-President*,  
John V. Thurgar, Esquire, *Treasurer*,  
Mr. James Bustin, *Secretary.*

## PARISH OF PORTLAND.

J. C. Watterbery, Robert Rankin, and James Travis, *overseers of poor.*  
James Cody, John Cunard, and John Owens, *assessors of taxes.*  
Griffith Morrison, *collector of taxes.*

John Moore, James Stevenson, junr. James Burley, James Stevenson,  
Robert Bowes, John Stackhouse, John Robinson, Thomas Armstrong,  
George Buckley, James Joyce, and Nicholas Wyse, *constables.*

Ephraim Sentell, James M'Gregor, Thomas M'Faddin, William Pat-  
terson, John Niles, Maurice Delany, James Grundy, Nugent Creighton,  
Thomas Bean, William Robertson, William Bean, and Thomas Gar-  
nett, *fence viewers.*

James Burley, Michael Campbell, Edward Hughes, John Robinson, G.  
Buckley, and James Stevenson, *pound keepers.*

Alexand  
dan, Franc  
and Gilbert  
Patrick  
James Sta  
junr. Jame  
son, Edwar  
Robert I  
of schools.  
William

Isaac Cl  
William  
John Ha  
Isaac Fl  
John Du  
William  
William  
William

P.

Joseph B  
the poor.  
Phillip M  
Stephen  
of taxes.  
George M  
Thomas  
Abraham  
Phillip Bl  
Daniel V  
Thomas

RELIGIO  
in favour of  
perty to my  
and that is  
them nothin  
all the world

Religion  
and without

Avoid tho  
a danger of

Alexander M'Ewen, John Jordan, Robert Ewing, William W. Jordan, Francis Jordan, Samuel Reynolds, David Roberts, George Marr, and Gilbert Jordan, surveyors of lumber.

Patrick M'Crackin, George Buckley, John Robinson, John Moore, James Stephenson, James Burley, Nicholas Wyse, James Stephenson, junr. James Joyce, Thomas Armstrong, George Buckley, John Robinson, Edward Hughes, and John Stackhouse, hog reeves.

Robert Rankin, John C. Waterbury, and William G. Cody, trustees of schools.

William H. A. Keans, town clerk.

---

## PARISH OF LANCASTER.

---

Isaac Clarke, James Olive, and John Gillies, overseers of poor.

William Tilton, Isaac Clarke, and James Olive, assessors of taxes.

John Harding, collector of taxes.

Isaac Flewelling, Rhd. H. Carman, Isaac Clarke, trustees of schools.

John Dunham and Robert M'Crossin, constables.

William Tilton, George Vaughan, and Charles Lord, fence viewers.

William Tilton and John Harding, pound keepers.

William Wilson, town clerk and clerk of the market.

---

## PARISH OF SAINT MARTINS.

---

Joseph Brown, Simon Vaughan, and Thomas Stephens, overseers of the poor.

Philip Mosher, Jas. M'Lean, and Thos. Fownes, trustees of schools.

Stephen Mosher, Philip Mosher, and Abraham Bradshaw, assessors of taxes.

George Marro, surveyor of lumber.

Thomas H. Black, collector of taxes.

Abraham Marchbanks and William Sharp, constables.

Philip Black and Daniel Brown, fence viewers.

Daniel Vaughan, pound keeper.

Thomas H. Black, town clerk.

---

RELIGION.—Patrick Henry left in his will the following testimony in favour of the christian religion:—I have now disposed of all my property to my family; there is one thing more I would wish to give them, and that is the Christian religion. If they had that, and I had given them nothing, they would be rich—and without it, if I had given them all the world, they would be poor."

---

Religion gives to time all its importance, and to eternity all its glory; and without it existence is a mere riddle.

Avoid those persons who take pleasure in troubling others. There is a danger of being burnt if you get too near the fire.

## THE ROYAL FAMILY OF GREAT-BRITAIN.

**KING WILLIAM IV.**, born August 21, 1765; married July 11, 1818, to **ADELAIDE AMELIA LOUISA TERESA CAROLINE**, sister of the reigning Duke of Saxe-Meningen, born August 13, 1792.—(Crowned 8th September, 1831.)

*Royal Princes and Princesses.*—**Augusta Sophia**, born Nov. 8, 1768.

**Elizabeth**, born May 22, 1770; married April 7, 1818, to **Frederick Joseph Louis**, Landgrave of Hesse-Homburg, who died April 2, 1829, in his 61st year.

**Ernest Augustus**, Duke of Cumberland, born June 5, 1771; married May 29, 1815, **Fredrica Sophia Carolina**, daughter of the Duke of Mecklenburg Strelitz, and widow of **Frederick William**, Prince of Salms Braunfels, born March 2, 1778. *Issue*, **George Frederick**, born May 27, 1819.

**Augustus Frederick**, Duke of Sussex, born January 27, 1778.

**Adolphus Frederick**, Duke of Cambridge, born February 24, 1774; married May 7, 1818, to **Augusta Wilhelmina Louisa**, neice of the Landgrave of Hesse; born July 25, 1797. *Issue*, **George William**, March 23, 1819, **Augusta Caroline**, July 19, 1822.

**Mary**, Duchess of Gloucester, born April 25, 1776.

**Sophia**, born November 8, 1777.

*Present order of Succession to the Crown.*—**Alexandrina Victoria**, issue of the late Duke of Kent, born May 24, 1819.

## HIS MAJESTY'S MINISTERS.

**Earl Grey**, first lord commissioner of His Majesty's treasury.  
**Lord Brougham and Vaux**, lord chancellor.  
**Viscount Althorp**, chancellor of the exchequer.  
**Viscount Melbourne**, principal sec'y of state for the home department.  
**Viscount Palmerston**, principal secretary of state for foreign affairs.  
**Viscount Goderich**, principal sec'y of state for the colonial department.  
**Sir James Graham**, first Lord Commissioner of the Admiralty.  
**Marquis of Lansdown**, lord president of his majesty's privy council.  
**Lord Durham**, lord privy seal.  
**Lord Auckland**, president of the board of trade and master of the mint.  
**Right Hon. Charles Grant**, president of board of control for India affairs.  
**The Duke of Richmond**, postmaster-general.  
**Sir Thomas Denman**, attorney-general.  
**Mr. Horne**, solicitor-general.  
**Lord Hill**, commander-in-chief.  
**Lord Holland**, chancellor of the duchy of Lancaster.  
**The Duke of Devonshire**, lord chamberlain.  
**Earl of Carlisle**, seat in the cabinet (without place.)  
**Lord John Russell**, paymaster-general of his majesty's forces.  
**The Hon. Agar Ellis**, 1st commissioner of his majesty's woods and forests.  
**Mr. Robert Grant**, judge advocate-general.  
**Sir Willoughby Gordon**, master-general of the ordnance.

Sir Robert  
Mr. Powlett  
Rear-Admiral  
Rear-Admiral  
Captain Sir  
Captain Ho  
Hon. George  
Lord Nugen  
Mr. R. V. S  
Mr. F. T. B  
Hon. G. Po  
Lord Howick  
Mr. George

The Marquis  
The Earl of  
Viscount An  
Sir W. Free

BI

His Excellen  
the Most H  
and Comma  
and Upper  
Dependenci  
vince of Lo

The Honour  
of the Royal  
Province.  
Alexander  
Gaspé, Febru

His Excellen

His Excellen

His Excellen

His Excellen

Sir Thomas  
Honourable Ric  
Council, admil

Sir Robert Spencer, surveyor-general to the board of ordnance.  
 Mr. Powlett Thompson, treas'r. of navy and vice-pedt. of board of trade.  
 Rear-Admiral Sir Thomas Hardy,  
 Rear-Admiral Hon. G. H. L. Dundas, } Lords of the Admiralty.  
 Captain Sir S. T. Pechell,  
 Captain Honorable G. Barrington,  
 Hon. George Elliot, first secretary to the admiralty.  
 Lord Nugent,  
 Mr. R. V. Smyth, } Lords of the Treasury.  
 Mr. F. T. Baring,  
 Hon. G. Ponsonby,  
 Lord Howick, under-secretary for the home department.  
 Mr. George Lamb, under-secretary for the colonies.

### HOUSEHOLD.

The Marquis of Wellesley, lord steward of his majesty's household.  
 The Earl of Albermarle, master of the horse.  
 Viscount Anson, master of the king's buck hounds.  
 Sir W. Freemantle, deputy ranger of Windsor great park.

## BRITISH NORTH AMERICA.

His Excellency MATTHEW LORD AYLMER, Knight Commander of the Most Honorable Military Order of the Bath, Lieutenant-General and Commander of His Majesty's Forces in the Provinces of Lower and Upper Canada, Nova-Scotia, New-Brunswick, and their several Dependencies, and Administrator of the Government of the said Province of Lower Canada.

### LIEUTENANT GOVERNORS.

#### LOWER CANADA.

The Honorable Sir Francis Nathaniel Burton, Knight Grand Cross of the Royal Hanoverian Guelphic Order, Lieutenant-Governor of the Province.

Alexander Forbes, Esquire, Lieutenant-Governor of the District of Gaspe, February 18, 1806.

#### UPPER CANADA.

His Excellency Major-General Sir John Colborne, K C B

#### NOVA-SCOTIA.

His Excellency Lieutenant-General Sir Peregrine Maitland, K C B

#### NEW-BRUNSWICK.

His Excellency Major-General Sir Archibald Campbell, Bart. G C B

#### PRINCE EDWARD'S ISLAND.

His Excellency Lieutenant-Colonel Augustus W. Young.

#### NEWFOUNDLAND.

Sir Thomas Cochrane, Knight, Captain R. N.—(in England)—The Honorable Richard Alexander Tucker, senior Member of His Majesty's Council, administering the Government.

## FARMERS' CALENDAR,

*From Fessenden's New England Farmers' Almanack, for 1832.*

**JANUARY.**—Time is the only gift or commodity of which every man who lives has just the same share. The passing day is of exactly the same dimensions to each of us; its amount is unalterable. But some make more of it than others, or in other words, live longer in the same number of hours, because they employ more of their time to some agreeable and useful purpose. We should therefore watch every minute, and force it, (if I may so express myself,) to leave a blessing in our hands before it departs and joins the years before the flood. I take it that you are busily engaged in procuring your annual stock of fire-wood. If so, cut your stumps low, and cut clean as you go. Cattle which are not housed during winter should have a shed or some other shelter, and a rack under it to hold their fodder. By this means the animals will be more comfortable, of course will thrive better, and their manure will be of more value than if it were exposed to sun and rain, wind and weather. If possible let water be brought in your yard to your cattle, for they will suffer much from thirst before they will go a mile, more or less, to a watering place, exposed to dogs and other dangers. Besides in suffering them to stray out of the yard you lose much valuable manure. It is of great consequence that the floors of your cow-houses and stables be tight, so that none of the stale of the animals be lost, as it is of great value for manure.

**FEBRUARY.**—The last year's calves should now be fed with hay and roots, or other good fodder, and they should be thoroughly well fed, and kept perfectly clean by means of litter: at this age it is a matter of great consequence to keep such young cattle as well as possible, for the contrary practice will stop their growth, which can scarcely be recovered by the best summer's feeding. It is not right to keep yearling calves and two-year-old calves together; because, in general, the younger cattle are, the better they should be fed. Regularity in the feeding of cattle is of very great consequence. Three times a day, precisely at a certain hour, they should be furnished with their allowance; and cattle, particularly if they are corn fed, require their fill of water. The easy, contented and improving disposition of the cattle, and small waste of provender attendant on this regularity, is a source of constant satisfaction to the owner. The best way to make sure of sound and healthy lambs is to take good care of the ewes. For a few days or weeks before weaning time they should be generously fed. Some juicy food which they are fond of, should be given them, such as potatoes and other roots, with the exception of turnips, which are said to be injurious to ewes with lamb. It is thought to be the most judicious course to give ewes about half a gill of Indian corn a day till they have produced their young, in order to give them strength, and while suckling, good roots or some other juicy food.

**MARCH.**—Take opportunity before the hurrying season comes on to select and purchase such neat cattle, sheep, pigs, seed wheat, potatoes for planting, &c. as will be likely to prove most valuable on your farm, having in mind the following maxim, viz: Choose those animals and vegetables to propagate from, that possess the qualities which you wish might distinguish their offspring in the greatest perfection.—Farmers are too apt to sell off their best stock to the butchers and keep the poorest to breed



