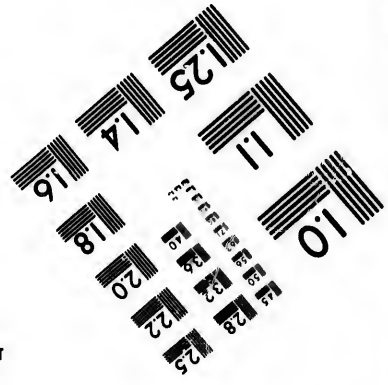
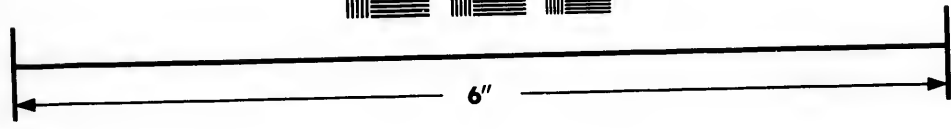
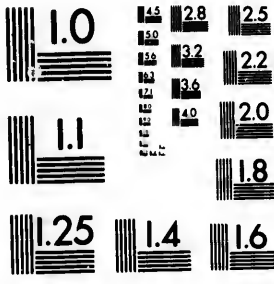


**IMAGE EVALUATION
TEST TARGET (MT-3)**



**Photographic
Sciences
Corporation**

23 WEST MAIN STREET
WEBSTER, N.Y. 14580
(716) 872-4503

1.5 1.8 2.0 2.2 2.5
2.8 3.2 3.6

**CIHM/ICMH
Microfiche
Series.**

**CIHM/ICMH
Collection de
microfiches.**



Canadian Institute for Historical Microreproductions / Institut canadien de microreproductions historiques

10
11
12
13
14

© 1984

Technical and Bibliographic Notes/Notes techniques et bibliographiques

The Institute has attempted to obtain the best original copy available for filming. Features of this copy which may be bibliographically unique, which may alter any of the images in the reproduction, or which may significantly change the usual method of filming, are checked below.

L'Institut a microfilmé le meilleur exemplaire qu'il lui a été possible de se procurer. Les détails de cet exemplaire qui sont peut-être uniques du point de vue bibliographique, qui peuvent modifier une image reproduite, ou qui peuvent exiger une modification dans la méthode normale de filmage sont indiqués ci-dessous.

- Coloured covers/
Couverture de couleur
- Covers damaged/
Couverture endommagée
- Covers restored and/or laminated/
Couverture restaurée et/ou pelliculée
- Cover title missing/
Le titre de couverture manque
- Coloured maps/
Cartes géographiques en couleur
- Coloured ink (i.e. other than blue or black)/
Encre de couleur (i.e. autre que bleue ou noire)
- Coloured plates and/or illustrations/
Planches et/ou illustrations en couleur
- Bound with other material/
Relié avec d'autres documents
- Tight binding may cause shadows or distortion
along interior margin/
La reliure serrée peut causer de l'ombre ou de la
distortion le long de la marge intérieure
- Blank leaves added during restoration may
appear within the text. Whenever possible, these
have been omitted from filming/
Il se peut que certaines pages blanches ajoutées
lors d'une restauration apparaissent dans le texte,
mais, lorsque cela était possible, ces pages n'ont
pas été filmées.
- Additional comments:/
Commentaires supplémentaires:

- Coloured pages/
Pages de couleur
- Pages damaged/
Pages endommagées
- Pages restored and/or laminated/
Pages restaurées et/ou pelliculées
- Pages discoloured, stained or foxed/
Pages décolorées, tachetées ou piquées
- Pages detached/
Pages détachées
- Showthrough/
Transparence
- Quality of print varies/
Qualité inégale de l'impression
- Includes supplementary material/
Comprend du matériel supplémentaire
- Only edition available/
Seule édition disponible
- Pages wholly or partially obscured by errata
slips, tissues, etc., have been refilmed to
ensure the best possible image/
Les pages totalement ou partiellement
obscurcies par un feuillet d'errata, une pelure,
etc., ont été filmées à nouveau de façon à
obtenir la meilleure image possible.

This item is filmed at the reduction ratio checked below/
Ce document est filmé au taux de réduction indiqué ci-dessous.

10X	14X	18X	22X	26X	30X
<input type="checkbox"/>	<input type="checkbox"/>	<input type="checkbox"/>	<input type="checkbox"/>	<input checked="" type="checkbox"/>	<input type="checkbox"/>
12X	16X	20X	24X	28X	32X

The copy filmed here has been reproduced thanks to the generosity of:

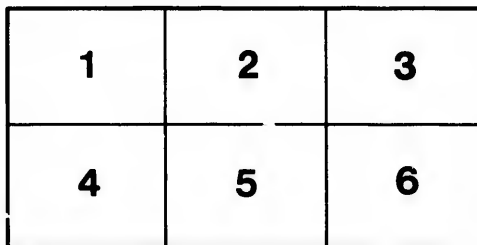
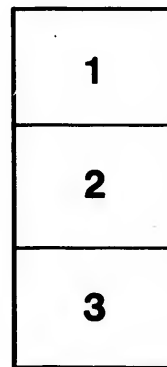
Library of the Public
Archives of Canada

The images appearing here are the best quality possible considering the condition and legibility of the original copy and in keeping with the filming contract specifications.

Original copies in printed paper covers are filmed beginning with the front cover and ending on the last page with a printed or illustrated impression, or the back cover when appropriate. All other original copies are filmed beginning on the first page with a printed or illustrated impression, and ending on the last page with a printed or illustrated impression.

The last recorded frame on each microfiche shall contain the symbol \rightarrow (meaning "CONTINUED"), or the symbol ∇ (meaning "END"), whichever applies.

Maps, plates, charts, etc., may be filmed at different reduction ratios. Those too large to be entirely included in one exposure are filmed beginning in the upper left hand corner, left to right and top to bottom, as many frames as required. The following diagrams illustrate the method:



L'exemplaire filmé fut reproduit grâce à la générosité de:

La bibliothèque des Archives
publiques du Canada

Les images suivantes ont été reproduites avec le plus grand soin, compte tenu de la condition et de la netteté de l'exemplaire filmé, et en conformité avec les conditions du contrat de filmage.

Les exemplaires originaux dont la couverture en papier est imprimée sont filmés en commençant par le premier plat et en terminant soit par la dernière page qui comporte une empreinte d'impression ou d'illustration, soit par le second plat, selon le cas. Tous les autres exemplaires originaux sont filmés en commençant par la première page qui comporte une empreinte d'impression ou d'illustration et en terminant par la dernière page qui comporte une telle empreinte.

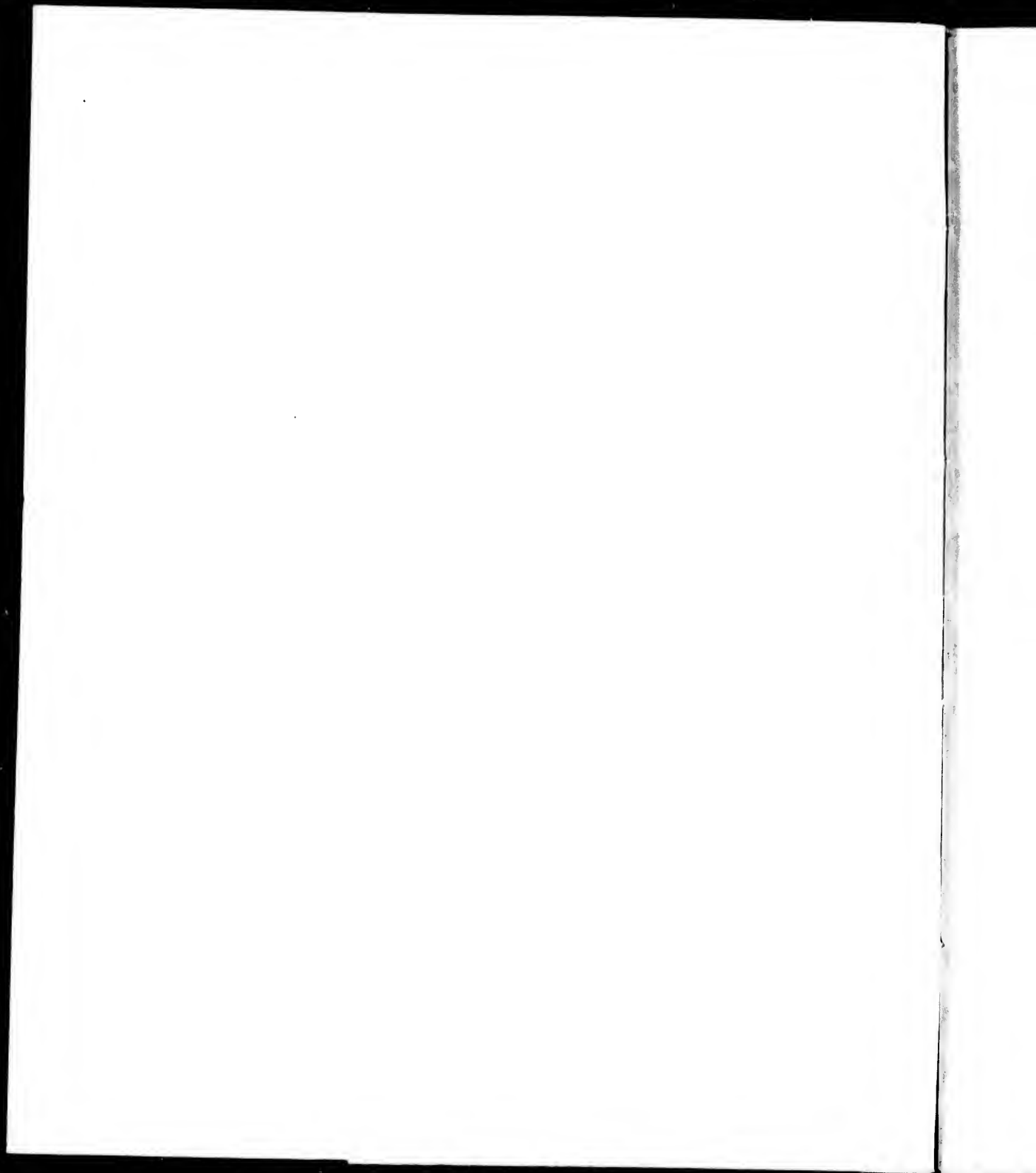
Un des symboles suivants apparaîtra sur la dernière image de chaque microfiche, selon le cas: le symbole \rightarrow signifie "A SUIVRE", le symbole ∇ signifie "FIN".

Les cartes, planches, tableaux, etc., peuvent être filmés à des taux de réduction différents. Lorsque le document est trop grand pour être reproduit en un seul cliché, il est filmé à partir de l'angle supérieur gauche, de gauche à droite, et de haut en bas, en prenant le nombre d'images nécessaire. Les diagrammes suivants illustrent la méthode.

errata
to

pelure,
on à

32X



IMPORTS AND EXPORTS OF THE PORT OF QUEBEC FOR THE YEAR 1825.

IMPORTS : 1825.

<i>AT QUEBEC.</i>							
796 Vessels, 193,598 Tons, 8973 Men.	190 Pipes } Ma- 76 Hhds. } dera 54 Qr. Casks } 27830 178 Casks & Cases } Gals. 124 Pipes } Port 45 Hhds. } 51740 5 Qr. Casks } 285 Casks & Cases } Gals. 230 Pipes } Teneriffe 101 Hhds. } 45121 206 Qr. Casks } Gals. 1 Case } 3 Butts } Spanish 675 Pipes } 90 Hhds. } 78118 e Qr. Casks } Gals. 20 Cask & Cases } 25 Butts } Sher- 7 Pipes } 1162 2 Hhds. } 40 Casks & Cases } Gals. 185 Pipes } Royal 45 Hhds. } 22758 34 Qr. Casks } Gals. 223 Pipes } Sicilian 30447 259 Hhds. } Gals. 2 Cases } Cape 6298 40 Pipes } 39 Hhds. } Gals.	13 Pipes Turkey 1584 do. 2 Butts Malaga 594 2 Pipes } Galls. 6 Pipes } Lisbon 936 5 Hhds. } Galls. 8 Cases Ithenish 154 gals 1 Butt } Mountain 355 3 Cases } Galls. 92 Hhds. } French 197 Cks. & Cases } 6995 1 Puns. } Whiskey 3 Kegs } 160 1 Jar } Galls. 844 Pipes } Brandy 115, 153 Hhds. } 538 Galls. 598 Pipes } Geneva 69000 33 Hhds. } Galls. 9444 Puns. } Rum 2025981 386 Hhds. } Galls. 427 Casks Molasses 39606 217 Casks } Rhind. Sugar 7 Boxes } 299269 lbs. 4118 Cks. } Miscovado 40- 1614 Bags } gr 2837628 lbs. 144 Casks } Coffee 55965 59 Bags } lbs. 19 Casks } Leaf Tobacco 27 Bales } co 24019 2 Boxes } pounds 257 Boxes manufactured Tobacco 775 pounds 54 Casks Snuff 8005 lbs. 35576 Packs playing Cards 231370 Mmots Salt	677 Chests and Boxes Hy- son Tea 38744 lbs. 14482 Chests and Boxes, 17 Packages other Teas 1034673 pounds 1010 Chests and boxes Bo- hen Tea 83276 lbs. N. B. Three per cent has been deducted from all the above ar- ticles, except the playing cards. <i>Value of Merchandise paying</i> <i>2½ per cent.</i> £990255 13 7 <i>Value of Free</i> } Goods, } 30615 19 11 \$1,010,868 14 6 <i>AT NEW CARLISLE.</i> [From 10th October 1824 to 10th October 1825.] 35 Vessels, 1926 Tons, 290 Men. 75 Gallons Wine, 1381 -- Brandy & Gin 4952 -- Rum 1296 -- Molasses 5870 Lbs. Miscovado sugar 178 -- Coffee 1690 -- Leaf Tobacco 48 -- manufactured To- bacco 12 -- Snuff 718 -- Tea	N. B. Three per cent has been deducted from the above Articles. 60 Hhds. } Salt, duty 27800 Bshls. } free. <i>Value of Merchandise paying</i> <i>2½ per cent.</i> £11187 6 8 <i>AT GASPE.</i> [From 10th Octr. 1824, to 10th Octr. 1825.] 24 Vessels 2405 Tons, 152 Men. 77 Gallons Wine, 1093 do. Rum, 1561 do. Molasses, 118 do. Brandy & Gin, 4180 lbs. Musc. Sugar, 280 do. Coffee, 91 do. Leaf Tobacco, 541 do. manufact. do. 29 do. Snuff, 848 do. Tea. N. B. -- Three per cent. has been deducted from the a- bove articles. 453 Tons } Salt, duty 12400 Bushels } free. <i>Value of Merchandise paying</i> <i>2½ per cent.</i> £2207 11 2			

EXPORTS : 1825.

<i>FROM QUEBEC.</i>							
CLEARP--855 Vessels, 227, 707 Tons, 9884 Men; 61 of which built this year, 22636 Tons.	988 Mats and Bowsprits 1799 Spars 33152 Pieces Oak Timber 124078 -- Pine do. 8387 -- Maple do. 3954410 -- Staves & Heading 19265 -- Stave Ends 1479565 -- Boards and Planks 59577 -- Deal Ends 72388 Batten 11859 Batten Ends 29216 Handspikes 22407 Oars 1251 Cords Lathwood 11 Cords } Timber Ends 1305 Pieces } 125379 Pieces wood Hoops 2545 Puns. } 5922 Tierce & } Barril } Packs 54852 Ps. Treenails 25 -- Nices -- Anchor Stocks 150 Stauncions, 541 Pieces Scantling	1127 Feet Scantling 65302 Bbls. Ashes 258095 cwt. 1 qr. 19 lbs. 718016 Bushels Wheat 1669 -- Barley 11169 -- Oats 16976 -- Pease 14 -- Indian Corn 5 Casks } Do. Ment 175 Bbls. } 11823 Bush. Flaxseed 40403 Hhds. } 164 Bags } Flour, 20196 Cwt. Biscuit, 32 Casks } Crackers, 49 Kegs } 12077 Almonds Potatoes, 241 -- Turnips, 14416 Bbls. Pork, 29 Tierces } Beef, 5152 Bbls. } 1 Cask } 106 Kegs } Rounds, Sc. 505 Kils. } 18 Puns. } 13 Casks } Hams, 85 loose } 141 Kegs Tongues, 27 Kegs } 160 lbs. } Sausages, 10 Kegs Fripe, 3 Bbls. } Lard, 787 Kegs } 23 Casks } Butter, 2440 Kegs }	7 Casks } 11 Boxes } Cheese, 71 Baskets } 24 loose } 1922 Casks } 174 Boxes } Cod fish, 1556 Cwt. } 95 Kegs Cod-sounds. 579 Tierces } Salmon, 224 Bbls. } 255 -- Pickled Fish, 115 -- } 20 Boxes } Herrings, 81 Tons oil-cake, 128 Casks } 66 Kegs } Oil, 35 Jars } 573 Boxes Soap, 171 -- Candles, 132 Casks } Ale & Beer, 20 Kegs } 8 Casks } 2 Boxes } Ess. spruce. 1 Jar } 7 Puns. } Cider, 2 Hhds. } 5 Puns. } Peppermint, 1 Bbl. } 1 Cask Noyeau, 3 Puns. } Whiskey 1 Cask } 6 Casks } Canada Bal- sam, 5 Kegs } 5 Cases } 20 Casks Vinegar,	900 Bbls. Apples, 182 -- Onions, 1 -- } 15 Casks } Cranberries, 17 Kegs } 24 Packages Trees and Plants. 59 Puns. } Malt, 40 Bags } 500 Bushels } 3 Bales Hops, 29 Casks } Honey, 4 Kegs } 127 Hides } 6 Casks Ox horns, 2 Bbls. } Moccasin, 1714 Pairs } 3 Boxes } Boots & Shoes 31 Pairs } 3 Bales } 3 Boxes } Leather, 2 Bbls. } 22 Cwt. } 2 Puns Bark, 2 -- Hues Wax, 7 -- } Bran, 2 Bbls. } 5 Cases Essential Oils, 7 Bbls. } 5 -- Eggs 60 Horses, 1 Cow, 14 Sheep, 2 Hhds. } Tobacco 2 Bbls. }			

100 Kegs. } Tobacco
500 lbs. }
32 Kegs Snuff
4 Bark Canoes
5 Boxes Indian Curio-
sities
1 Cask } Stuffed Birds
2 Boxes }
45 Metal Stoves
20 Plough Shares

FURS & PELTRIES.

8693 Fisher Skins
21929 Martin
1074 Fisher
12462 Mink
2054 Otter
1659 Bear and Cub
6 Wolf
13962 Beaver
2061 Raccoon
61557 Muskrat
95 Cat
925 Lynx
796 Deer
9 Wolverine
18 Buffalo Robes
22 Carcajou Skins
1 Keg Castorum

**SUNDRY IMPORTED
GOODS EXPORTED.**

3 Pipes }
8 Hhds. } Wine
9 qr. Casks. }
12 Puns. } Rum
2 Hhds. }
3 Casks Shrub
16 Casks Molasses
16 Barrels }
1 Bag } Sugar
4 Cwt. }
1 Bag Coffee
460 Chests Tea
15 Boxes Chocolate
297 Boxes Raisins
54 do. Prunes
2 Bags Almonds,
4 Bags Pepper,
11 Casks Rice,
19 Bags Cocon,
15 Barrels Oatmeal,
2 Puns. }
10 Bags. } Barley,
10 Hhds. }
246 Pieces } Logwood,
10 Tons }
71 Kegs Paint,
12 Casks } Nails,
4 Kegs }
1 Case Sheet Iron,
5 Cases } Copper.
40 Sheets }
4 Cwt. Copper Bolts,

3 Casks } Old Copper,
4 Tons }
10 Bars & bundles } Iron,
30 Pieces }
68 Cwt. }
2 Bomiles Steel,
1 Achor,
-40 Grappells,
95 lbs. Lead,
2 Barrels Tar,
2 Jars Turpentine,
350 Pieces Brown Ware,
3 Bales Wool,
2 do. Cotton Wool,
31 Coils Cordage,
1 Cask Lanes & Twines,
1 Cable,
1 Canboose,
1 Case Guns,
500 Gun Flints,
12 Boxes } Shot,
16 Bags }
653 Bbls. } Gunpowder,
7 Kegs }
100 lbs. }
406 packages Merchandize.

FROM NEW-CARLISLE.

CLEARER—73 Vessels, 5475
Tons, 302 Men,
25848 Cwt. } Codfish,
35 Bbls. }
4837 Gallons Oil,
220 do. Oil Dregs,
40 Kegs Souds,

1482 Tons } Pine Timber
2924 Pieces }
36 Tons } Birch Timber
125 Pieces }
188 do. Plank,
156 Cords Lathwood,
182 Spars,
220 Birch Billets,
30 Barrels Flour,
2 do. Old Copper,
810 Minots Salt,
15 packages Merchandize.

FROM GASTÉ.

CLEARER—26 Vessels, 2757
Tons, 180 Men.

24771 Cwt. } Codfish,
123 Bbls. }
4 do. Salmon,
1 do. Pickled do,
9 do. Herrings,
4 do. Souds,
5 Puns. }
14 Hhds. } Oil,
174 Bbls. }
2667 Galls. }
569 Pieces Pine Timber,
34 do. Birch,
1417 do. Boards,
19 do. Spars,
19 do. Knees,
113 Cords Lathwood,
2 Bbls. } Old Copper,
2 Boxes }

er
er

e.

7

