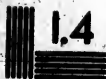
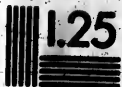


MICROCOPY RESOLUTION TEST CHART

(ANSI and ISO TEST CHART No. 2)



1.45

1.50

1.56

1.62

1.71

1.80

1.88

2.00

2.11

2.25

2.35

2.50

2.67

2.80

3.00

3.15

3.30

3.45

3.60

3.75

4.00

4.20

4.50

4.75

5.00

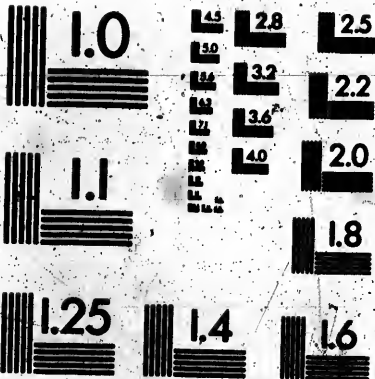


APPLIED IMAGE Inc

1853 East Main Street
Rochester, New York 14609 USA
(716) 482-0300 - Phone
(716) 288-5888 - Fax

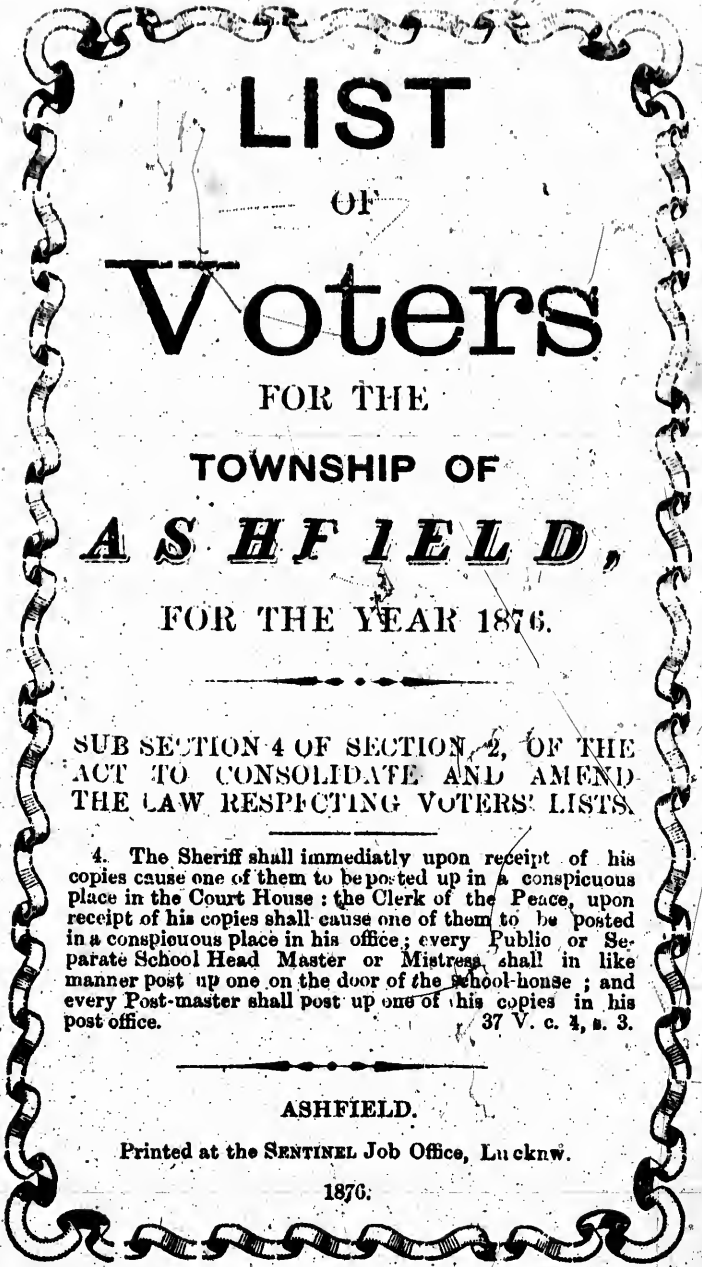
MICROCOPY RESOLUTION TEST CHART

(ANSI and ISO TEST CHART No. 2)



APPLIED IMAGE Inc

1653 East Main Street
Rochester, New York 14609 USA
(716) 482-0300 - Phone
(716) 286-5888 - Fax



LIST
OF
Voters
FOR THE
TOWNSHIP OF
ASHFIELD,
FOR THE YEAR 1876.

SUB SECTION 4 OF SECTION 2, OF THE
ACT TO CONSOLIDATE AND AMEND
THE LAW RESPECTING VOTERS' LISTS.

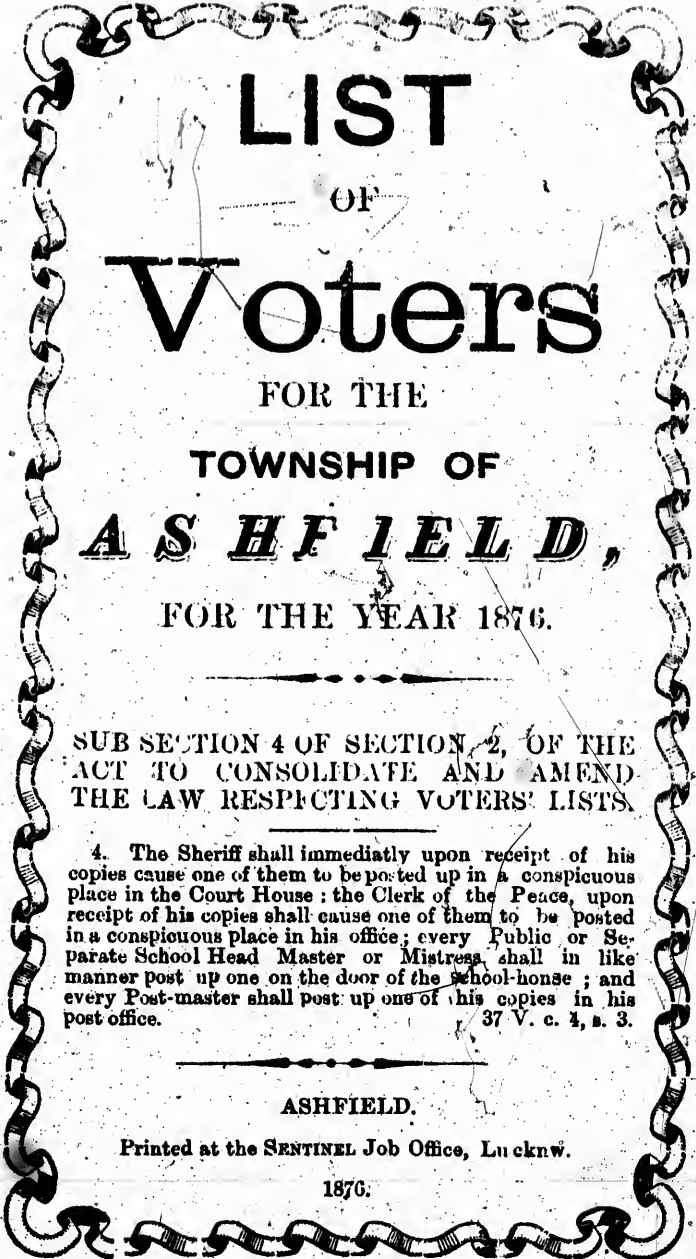
4. The Sheriff shall immediately upon receipt of his copies cause one of them to be posted up in a conspicuous place in the Court House; the Clerk of the Peace, upon receipt of his copies shall cause one of them to be posted in a conspicuous place in his office; every Public or Separate School Head Master or Mistress shall in like manner post up one on the door of the school-house; and every Post-master shall post up one of his copies in his post office.

37 V. c. 4, s. 3.

ASHFIELD.

Printed at the SENTINEL Job Office, Lucknow.

1876.



LIST
OF
Voters
FOR THE
TOWNSHIP OF
ASHFIELD,
FOR THE YEAR 1876.

SUB SECTION 4 OF SECTION 2, OF THE
ACT TO CONSOLIDATE AND AMEND
THE LAW RESPECTING VOTERS' LISTS.

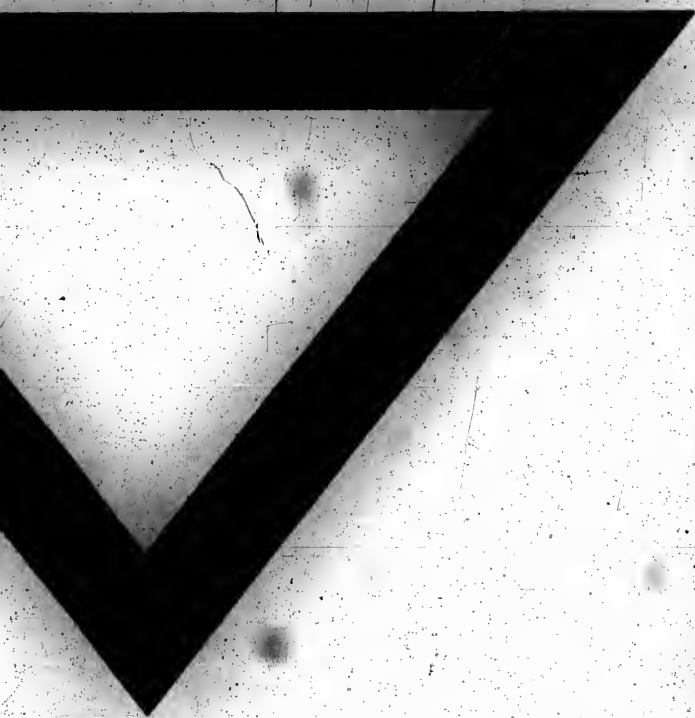
4. The Sheriff shall immediately upon receipt of his copies cause one of them to be posted up in a conspicuous place in the Court House; the Clerk of the Peace, upon receipt of his copies shall cause one of them to be posted in a conspicuous place in his office; every Public or Separate School Head Master or Mistress shall in like manner post up one on the door of the school-house; and every Post-master shall post up one of his copies in his post office.

37 V. c. 2, s. 3.

ASHFIELD.

Printed at the SENTINEL Job Office, Lu ck n w.

1876.





No. on Roll.

600

494

494

494

519

544

561

559

566

571

575

590

592

594

599

387

472

473

504

504

505

512

554

561

524

463

490

510

515

560

569

586

587

603

539

572

597

534

541

542

550

583

584

589

593

565

I thanks

L'exemplaire filmé fut reproduit grâce à la générosité de:

Archives of Ontario
Toronto

quality
ibility
e

Les images suivantes ont été reproduites avec le plus grand soin, compte tenu de la condition et de la netteté de l'exemplaire filmé, et en conformité avec les conditions du contrat de filmage.

filmed
on
mpres-
All
on the
re-
rinted

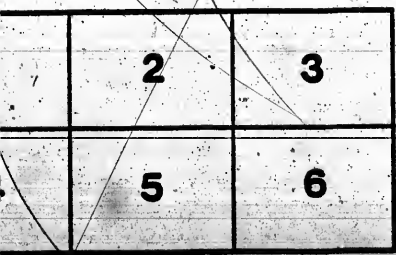
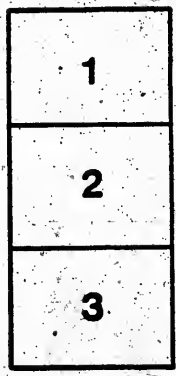
Les exemplaires originaux dont la couverture en papier est imprimée sont filmés en commençant par le premier plat et en terminant soit par la dernière page qui comporte une empreinte d'impression ou d'illustration, soit par le second plat, selon le cas. Tous les autres exemplaires originaux sont filmés en commençant par la première page qui comporte une empreinte d'impression ou d'illustration et en terminant par la dernière page qui comporte une telle empreinte.

ne
ON-
D"),

Un des symboles suivants apparaîtra sur la dernière image de chaque microfiche, selon le cas: le symbole \rightarrow signifie "A SUIVRE", le symbole ∇ signifie "FIN".

at
to be
ed
ft to
es
the

Les cartes, planches, tableaux, etc., peuvent être filmés à des taux de réduction différents. Lorsque le document est trop grand pour être reproduit en un seul cliché, il est filmé à partir de l'angle supérieur gauche, de gauche à droite, et de haut en bas, en prenant le nombre d'images nécessaire. Les diagrammes suivants illustrent la méthode.



Division No. 2.

No. of Roll.	NAME	LOT.	CON. ST.	O. OR T.
294	Anderson James	E pt 7 W pt 8 10	ED	T
302	Alton Valentine	E pt E pt 11	10 see sub div no 3	O
306	Asar John	N pt 12	10	ED O
311	Angus John	S pt 12	9	T
307	Alton Daniel	S pt 12	10	O
381	Anderson Thomas	S pt 12	6	O
362	Anderson T. Gordon	E pt 12	7	O
309	Allen Thomas	W pt 7	6	O
331	Ashley Isaac	E pt 2	9	O
261	Baldwin John	N pt 3	10	ED O
266	Bright Thomas	S p s p 6 n p 7	10 9	O
319	Blake William	E pt 8	9	O
372	Blake Robert	E pt 8	8	O
425	Blake Thomas	E pt 2	7	WD O
274	Courtney Michael	W pt 2	10	oc
269	Cranston Robert	n p a p 6 a p 7	10 ED	O
290	Cranston Joseph	S pt w pt 6	10	O
324	Cook Henry	E pt 5	9	O
334	Culbert George	N pt 1	9	O
337	Curren Cornelius	W pt 2	9 a pt 2 10	w d O
354	Cain Roger	2	8	w d O
362	Clare Michael	N pt 4	8	ed O
363	Clare Patrick	S pt 4	8	O
377	Cook S. C. J.	E pt 11	8	O
377	Cook Samuel	E pt 11	8	O
378	Conly James	N pt 12	8	O
379	Cranston Isaac	S pt 12	8	O
385	Cesar Charles	E pt 1	6	O
389	Cesar Samuel	W pt 11	6	O
387	Cesar Henry	w pt 11	6	See sub div No 1.
401	Cartwright John	w pt 5	7	see sub div No 1.
481	Cunningham Nath.	N pt 3	8	ED O
481	Cunningham Francis	N pt 3	6	O
277	Doyle Patrick	S pt 1	10	O
401	Douglas Robert	E pt 5	7	O
418	Denan Daniel	N pt 1	7	ed O
419	Dalton Daniel	N pt 1	7	O
431	Desmond Jeremiah	N pt w pt 2	7	see sub div no. 4.
276	Ford Thomas	E pt 1	10	WD O
279	Fraser Robert	w pt 2	10	ED O
266	Ferguson James	w pt 5	10	O
267	Findlay William	E pt 5	10	O
322	Finlay Thomas E.	N pt 6	9	O
325	Finlay Thomas	w pt 5	9	O
292	Gibson John	E pt 7	10	O
375	Glazier	S pt 10	8	O
615	Griffin John	w pt 2	6	O

427
 423
 280
 298
 316
 321
 380
 402
 416
 428
 701
 299
 300
 309
 295
 370
 282
 332
 358
 305
 368
 369
 234
 326
 327
 328
 330
 376
 333
 356
 357
 364
 397
 401
 411
 417
 528
 356
 355
 367
 371
 388
 394
 403
 407
 408
 421
 766
 398
 420

Division No. 1.



No. on Roll.

NAME	LOT	CON.	ST.	O. of	
609 Achlin John	E pt 4	1	E. D.		O.
494 Baker H. F.	N pt 7 and 8	4			T
494 Baker H. G.	N pt 7 and 8	4			T
494 Baker Peter	N pt 7 and 8	4			T
519 Black Anthony	S pt 12 N pt 9	3			O
544 Bunting Walter	W pt 11	3			T
561 Black John	E pt 8	2			O
559 Brindly John	E pt W pt 5	3			O
566 Burnet Thomas	S pt 3	3			O
571 Brown William	W pt 2	3			O
575 Bennet John	S pt 1	2			O
590 Bennet Richard	w pep 2 ep wp 5	1			O
592 Bennet Andrew	W pt E pt 5	1			cc
594 Burrows George	E pt 3	1			O
599 Bennet Joan	W h E h 5	1			O
387 Cesar Henry	N pt W pt 11	5	see subd no 2		O
472 Cooke John	E 3-4 2	5			O
473 Cornelius Thomas	E 4 2	5	Dungannon		T
504 Cluff Thomas	W pt 9	5			O
504 Cluff William	W pt 9	5			O
505 Cluff Henry	E pt 9	4			O
512 Cartwright John	E pt 11	5	see sub d no 2		O
554 Curry William	W pt 8	3			O
561 Carey Charles	S w pt 6	2			O
524 Clenlenning Robert	5 & 9 Southampton St		Dungannon		O
463 Doherty Irwin	W pt 1	5	E. D.		T
490 Dreany Andrew	E 3-4 6	5			O
510 Disber Thomas	S w pt 11	5			O
515 Davidson Robert	S pt 12	5			O
560 Doak Henry	W pt W pt 5	3			O
569 Dunbar Joseph	E pt 2 N E pt	1 2			O
586 Doherty William	S pt 1	1	E. D.		O
587 Donnelly John	W pt 2	2			O
603 Doherty James	N E pt 6	1			T
539 Elliott John	S pt 12	3			O
572 Fielder John	W pt 2	2			O
597 Foster Irwin	N pt W pt 4	1			O
334 Glenn James	S pt N pt 12	3	E D		O
541 Girvin David	W pt 11	2			O
542 Girvin	E pt 11	3			O
550 Gourley William	9	3			O
583 Graham James	N pt N pt 1	1			O
584 Graham James N.	S pt N pt 1	1			O
589 Gildhill Thomas	W pt E pt 2	1			O
593 Graham Randal	E pt 2	1			O
565 Graham James	W pt 3	1			O

Division No. 1.



No. on Roll.

NAME	LOT	CON.	ST.	O.	
609 Achlin John	E pt 9	1	E. D.		O
494 Baker H. F.	N pt 7 and 8	4			T
494 Baker H. C.	N pt 7 and 8	4			T
494 Baker Peter	N pt 7 and 8	4			T
519 Black Anthony	S pt 12 N pt 9	3			O
544 Bunting Walter	W pt 11	3			O
551 Black John	E pt 8	2			O
559 Brindly John	E pt W pt 5	3			O
566 Burnet Thomas	S pt 3	3			O
571 Brown William	W pt 2	3			O
575 Bennet John	S pt 1	2			O
590 Bennet Richard	w p e p 2 e p w p 5	1			O
592 Bennet Andrew	W pt E pt 5	1			sc
594 Burrows George	E pt 3	1			O
599 Bennet Joan	W h E h 5	1			O
387 Cesar Henry	N pt W pt 11	5	see subd no 2		O
472 Cooke	E 3-4 2	5			O
473 Cornelius Thomas	E 3-4 2	5	Dungannon		T
504 Cluff Thomas	W pt 9	5			O
504 Cluff William	W pt 9	5			O
505 Cluff Henry	E pt 9	4			O
512 Cartwright John	E pt 11	5	see sub d no 2		O
554 Curry William	W pt 8	3			O
561 Carey Charles	S w pt 6	2			O
524 Glen Jenning Robert	5 & 9 Southampton St		Dungannon		O
463 Doherty Irwin	W pt 1	5	E. D.		T
490 Dreany Andrew	E 3-4 6	5			O
510 Disher Thomas	S w pt 11	5			O
515 Davidson Robert	S pt 12	5			O
560 Doak Henry	W pt W pt 5	3			O
569 Dunbar Joseph	E pt 2 N E pt	1 2			O
586 Doherty William	S pt 1	1	E. D.		O
587 Donnelly John	W pt 2	2			O
603 Doherty James	N E pt 6	1			T
539 Elliott John	S pt 12	3			O
572 Fielder John	W pt 2	2			O
397 Foster Irwin	N pt W pt 4	1			O
534 Glenn James	S pt N pt 12	3	E D		O
541 Girvin David	W pt 11	2			O
542 Girvin	E pt 11	3			O
550 Gourley William	9	3			O
583 Graham James	N pt N pt 1	1			O
584 Graham James N.	S pt N pt 1	1			O
589 Gildhill Thomas	W pt E pt 2	1			O
593 Graham Randal	E pt 2	1			O
565 Graham James	W pt 3	1			O

**CIHM
Microfiche
Series
(Monographs)**

**ICMH
Collection de
microfiches
(monographies)**



Canadian Institute for Historical Microreproductions / Institut canadien de microreproductions historiques

© 1995

1870
1871
1872
1873
1874
1875
1876
1877
1878
1879
1880

1881
1882
1883
1884
1885
1886
1887
1888
1889
1890
1891
1892
1893
1894
1895
1896
1897
1898
1899
1900

1901
1902
1903
1904
1905
1906
1907
1908
1909
1910

Patent applied for 5/11/18
Geo. B. ...

750	Thorburn Duncan	s Pt 44	1r
750	Twitchel Arthur	s Pt 44	1r
11	Wilson James	n w q 15	14wd
15	Wilkie James	n Pt 13	14
29	Walker Samuel	e Pt 14	13
284	Walsh Maurice	e Pt 10	11
754	Wiley Abraham	so Pt 29	1r

I, JOHN COOKE, of the Municipality of Ashfield, in the County of Huron, do hereby certify that the within list is a correct list for the year 1876 of all persons appearing by the last revised Assessment Roll of the said Municipality to be entitled to vote at Elections for Members of the Legislative Assembly; and that a copy of such list was first posted up in my Office at Dunnsgannon, on the 5th day of August. And I hereby call upon all electors to examine the said list, and if any omissions or other errors are perceived therein, to take immediate proceedings to have the said errors corrected according to law.

Dated this 5th day of August.
JOHN COOKE,
 Clerk of Ashfield.

John Cooke

14
 626 Thomas Martin w w s p 13 ad 13 0 0
 230 Whitey Martin w h 9 10 11 w d 0
 423 Will Richard w p t 7 w d 0
 477 Willie James w p t 7 w d 0
 640 Walter James P Albert at 13 w d 0
 671 Willie Edward n p t 9 12 0
 682 Whitey James w p t 13 15 0
 649 Young Richard w s w 30 w p t 22 20 24 26 29
 624 Young James 3 1 0
 625 Young James Jr. 2 3 0
 707 Young Alex S p t 27 17 0

105 Fish
 144 Fish
 222 Fish
 66 Fish
 15 Orange
 58 Orange
 244 Orange
 245 Orange
 38 Har
 45 Hill
 68 Hu
 69 Ma
 240 Ho
 10 Jo
 235 Ja
 248 Jo
 254 Jo
 33 K
 43 L
 12 M
 21 M
 37 M
 51 M
 56 M
 57 M
 154 M
 750
 751
 1
 4
 5
 8
 13
 14
 24
 26
 28
 30
 32
 40
 41
 47

Division No 5

NAME Loc Cnt. Sr. O or T.

17 Boyd Donald 12 13 10 11 12 0
 20 Boyd Donald 12 13 10 11 12 0
 22 Brown James 12 13 10 11 12 0
 25 Brown John 12 13 10 11 12 0
 26 Brown John 12 13 10 11 12 0
 28 Buchanan William 12 13 10 11 12 0
 35 Burgess 12 13 10 11 12 0
 39 Burton Robert 12 13 10 11 12 0
 40 Burgess Ralph 12 13 10 11 12 0
 250 Beckett William No. of hat being subdiv. w p t 11 0
 741 Brown J. n e p t 26 37 1 r 0
 741 Brown W. H e p t 26 37 1 r 0
 753 Boyd Alex w p t 20 1 r 0
 755 Barker C. B 42 1 r 0
 57 Brown E n p t 19 13 w d 0
 57 Brown Samuel n p t 18 12 w d 0
 2 Chambers Hugh w p t 11 14 0
 36 Cooper George A e p t 12 12 0
 43 Cowan David e p t 10 12 0
 41 Cowan John w p t 9 12 0
 251 Cowhart Alexander p t 12 11 0
 34 Carr James e p t 2 12 12 0
 147 Cameron John w p t 2 12 0
 148 Cameron Robert w p t 2 12 0
 252 Dickson Thomas e p t 11 w d see sub div No 3 0
 726 Douglas John e p t 21 12 0
 726 Douglas Rodrick e p t 21 12 0

47	McKay Murdoch	s pt 9	13		o
48	McIntyre Donald	10	13		o
54	McLeod Archibald	n w q 8	13		o
55	McLeod Angus	n w q 8	13		o
60	McLeod Donald	n pt 7	13		o
70	McLeod Alexander	w pt 5	13		o
140	McKenzie Donald	n pt 10	14		o
148	McKenzie Alex	s pt 10	14		o
145	McKenzie Allan	e pt 9	14		o
146	McLennan Donald	w pt 8	14		o
148	McKenzie Donald	e pt 8	14 w d		o
151	McRae Duncan	w h 6	14 w d		o
152	McRae John	s pt 7	14 w d		o
454	McRae Donald	w pt 5	14 w d		o
154	McRae Duncan	w pt 5	14 w d		o
241	McDonald Kenneth	pt 8	11 w d		o
253	McIntyre Archibald	pt 13	12 w d		o
738	McGregor Alex	n pt 29	1 r		o
731	McGregor Murdoch	e pt 28	1 r		o
732	McMurphy Alex	e pt 30	1 r		o
733	McMurphy Donald	pt 30	1 r		o
734	Melver Donald	n pt 32	1 r		o
737	McLennan Finlay	n part 33	1 r		o
769	McLean Kenneth	n part 33	1 r		o
738	McLennan John	south part 33	1 r		o
740	McLean Charles	west part 34	1 r		o
742	McLean John	e part 34	1 r		o
743	McLennan Duncan	w part 35	1 r		o
744	McLennan Malcolm	e pt 35 w pt 36	1 r		o
745	McLennan John	n pt 35	1 r		o
748	McCourt Andrew	s e pt 39	1 r		o
749	McRay Kenneth	n e pt 39	1 r		o
756	McDonald James	n pt 41	1 r		o
757	McLean Donald B	e part 43	1 r		o
758	McLean Allan	w pt 43	1 r		o
761	McKenzie Allan	s pt 45	1 r		o
762	McDonald Hugh	n e pt 45	1 r		o
763	McLellan Alex	n e pts pt 45	1 r		o
243	Office Hugh	w pt 8	11 w d		o
16	Parr Joseph	ap 16 14 wp 13 13			o
23	Pritchard Hugh	nwp 16 15 e pt 38			o
7	Ross Donald	e h 14	14		T
19	Ross Edmund	w p a p 16	14		o
46	Ross David	w pt 8	15		o
50	Ross Robert B	n pt 9	13		o
53	Ross Daniel	s P 7	13		o
757	Ritchmyre	w Pt 35	1 r		o
59	Sherwood Patrick	n P 7	13 w d		o
61	Sandy George	5	13		o
292	Stewart David	13	11		o
730	Stiles Thomas	s Pt 29	1 r		o
735	Smith Kenneth	s Pt s Pt 32			o
735	Smith Sidney	s Pt 41	1 r		o
764	Shields Peter	ne P 45 n w P 17			o

759 T
760 T
11 V
15 V
20 V
234 V
764 V

Ashb
tify t
year
revis
to be
the
such
gann
ly c
and
ceiv
hav

128 Design Isaac a pt 6 14 wd
 129 Edwards Peter a pt 9 11 wd
 130 Robinson John a pt n pt 9 11 wd

131 Finlayson Robert pt 9 14 wd
 132 Finlayson Alex a pt 9 14 wd
 133 Finlayson John w pt 12 11 wd
 68 Finlayson Donald 5 13 wd

13 Grant James L. a pt 17 14 wd
 58 Greerson James a pt 8 13 wd
 244 Griffith John a pt n pt 9 11 wd
 248 Grant William a pt 11 11 wd

35 Hamilton Robert w pt 12 13 wd
 48 Hill Henry n a pt 11 13 wd
 88 Hutchison Wm a pt a pt 6 13 wd
 62 Hutchison George n pt 6 13 wd
 240 Holliday Alex a pt 11 wd

10 Johnston David n w q 15 14 wd
 235 Jamieson John w pt 8 11 see sub div no 3
 249 Johnston Noble n pt 11 a pt 12 11
 284 Johnston James a pt 14 12

83 Kempton Thomas a pt 13 13

49 Lucas William n a pt 10 13

12 Matheson Alexander a q 16 14
 21 Murray Selby w h 10 14
 37 Munro Neil w h 14 13
 51 Matheson Murdoch w pt 8 13
 56 Murray W D n pt 7 12 see subdivision No 4
 57 Murray Adam n pt 7 12 wd
 154 Matheson Roderick pt 5 14 wd

760 Moggah Alexander a pt 40 1 r
 761 Murdoch James w pt 38 1 r
 1 McLennan John a pt 11 14 wd
 3 McDonald Kenneth w q 13 h 12 14

4 McDonald Finlay n w q 13 n h 13 14
 5 McKensie Murdoch a h 13 14 wd
 8 McDonald Alex w h 14 14 wd
 13 McDonald Angus n w h 16 14 wd

14 McDonald Donald n a q 16 15 wd
 24 McName Daniel n a pt 13 15 wd
 28 McKensie Duncan a pt 14 13
 30 McKensie Donald n a pt 13 13
 38 McDonald John 11 13

40 McKensie John s w pt 11 13
 41 McDeornid Angus w pt 10 13
 47 McKay Donald a pt 9 13

607 Hawkins George

w pt 12 to 13 n pt 20
37 & 40 n pt 20 w pt 18
41 sy at w pt 24 e pt 41
41 42 e pt 50 to 42 w pt 20
40 w pt 41 42 e pt 23 to 40 w
at 37 38 n pt 1 w pt 3 A v 20

661 Hawkins Thomas
665 Hawkins A. O.

w pt n pt 28 e pt 29
1 r 1 n 2 3 to 5 v 20 e w pt
28 to 30 w pt w pt 31 e of 30 31
to 33 e h 34 w of net 20 to 34 e of
A at 30 to 34 w of A at 31 to 34
e of C pt 33 34 e of Huron w 20

671 Hussey Patrick
677 Hogan Patrick
701 Hussey Thomas

w pt 5 1 r
n e pt 15 1 r
n e pt 15 see sub division No. 2

636 Isard Daniel

w pt 5 1 r

434 Johnstone Arch
694 Joy James
715 Johnstone Alex

e pt 4 e pt 5 7 wd
e pt 17 1 r
w pt 21 1 r

265 Knichtell Michael
382 Knightly Robert
425 Kendrick Edward
441 Keef Patrick
672 Keef John

12 10 wd
n w pt 6 8 wd
s p of w 4 6 wd
e pt w pt 8 7 wd
n e pt 5 1 r

270 Little David
272 Little David
353 Long Patrick
353 Long John
687 Lambertus Chris

n e pt 4 10 wd
s pt 3 10 wd
e pt 6 9 wd
e pt 6 9 wd
n e q 12 1 r

56 Murray W. D.
428 Murphy James
429 Murphy Thomas
623 Matheson William
690 Martin J. S.

n pt 3 5 see subdivision no 5
5 q 3 7 wd
5 q 3 7 wd
w pt 5 1 r
p Altr 43 e c st n pt 14 1 r

288 McLean Donald
293 McDonald Donald
345 McDonald Donald
346 McDonald Donald
347 McDonald Donald
348 McLeod Duncan
249 McDonald Donald
437 McAdams William
432 McCarthy Charles
440 McDonald John
443 Mr Carron David
446 McCall Michael
451 McConnell James
641 McConnell George

e h 10 10 wd
e pt 8 10 wd
w pt 8 9 wd
e pt 8 9 wd
w pt 2 9 wd
w pt 10 11 10 9 w pt 27 28
e pt 3 6 wd
e pt 4 8 wd
e pt w h 5 7 wd
n w q 8 7 wd
e w q 8 8 wd
e w q 12 5 wd
w pt 7 to 12 A at 1 2 H 2
1 2 6 Cane L 2 5

690 M. O.
691 M. O.
692 M. O.
693 M. O.
694 M. O.
695 M. O.
696 M. O.
697 M. O.
698 M. O.
699 M. O.
700 M. O.
701 M. O.
702 M. O.
703 M. O.
704 M. O.
705 M. O.
706 M. O.
707 M. O.
708 M. O.
709 M. O.
710 M. O.
711 M. O.
712 M. O.
713 M. O.
714 M. O.
715 M. O.
716 M. O.
717 M. O.
718 M. O.
719 M. O.
720 M. O.
721 M. O.
722 M. O.
723 M. O.
724 M. O.
725 M. O.
726 M. O.
727 M. O.
728 M. O.
729 M. O.
730 M. O.
731 M. O.
732 M. O.
733 M. O.
734 M. O.
735 M. O.
736 M. O.
737 M. O.
738 M. O.
739 M. O.
740 M. O.
741 M. O.
742 M. O.
743 M. O.
744 M. O.
745 M. O.
746 M. O.
747 M. O.
748 M. O.
749 M. O.
750 M. O.
751 M. O.
752 M. O.
753 M. O.
754 M. O.
755 M. O.
756 M. O.
757 M. O.
758 M. O.
759 M. O.
760 M. O.
761 M. O.
762 M. O.
763 M. O.
764 M. O.
765 M. O.
766 M. O.
767 M. O.
768 M. O.
769 M. O.
770 M. O.
771 M. O.
772 M. O.
773 M. O.
774 M. O.
775 M. O.
776 M. O.
777 M. O.
778 M. O.
779 M. O.
780 M. O.
781 M. O.
782 M. O.
783 M. O.
784 M. O.
785 M. O.
786 M. O.
787 M. O.
788 M. O.
789 M. O.
790 M. O.
791 M. O.
792 M. O.
793 M. O.
794 M. O.
795 M. O.
796 M. O.
797 M. O.
798 M. O.
799 M. O.
800 M. O.

- 699 McConnel David s at pk lot 6 and 7
- 700 McConnel Wm s of M at 6 and 7
- 701 McMillan John I lr
- 702 McKennie Donald s pt 2 lr
- 703 McCarthy Florasosa pt 12 lr
- 704 McCarty Michael s e q 13 lr
- 705 McGaughey John s pt 24 lr
- 706 McKee Alexander n e 22 lr
- 707 McGregor Rodrick n e pt 22 lr
- 708 McKennie Rodrick 22 lr
- 709 McGregor Hector I 9 lr
- 710 McGregory Donald n w pt 21 lr
- 711 McGregor Kenneth w pt 22 lr
- 712 McGregor John n w pt 21 lr
- 713 McKenzie Alex s w pt 25, w p 24 lr
- 714 McKay John s p 25 lr
- 715 McKay Duncan n p 24 lr
- 716 McKenzie Colin n p 25 lr
- 717 McKenzie John s p 26 lr
- 718 McKenzie Charles e p 26 lr

- 330 O'Riley John n w e 4 6 9 wd
- 342 O'Riley Thomas e pt 7, s p 7, 10 n s p pt 6 10
- 343 O'Riley Michael w p 7
- 344 O'Riley Patrick s pt e pt 6 10
- 436 O'Connor Thomas n pt w h 4 6 w d
- 445 O'Neal Patrick n pt 6 and 7 w d
- 446 O'Connor Jeremiah 4 5 5 w d
- 447 O'Connor Patrick n p 35 s p 45 s p 5 w d
- 448 O'Connor Edward London R. E. 7 and 8
s l r w I w s e 25 to 27 w s w 13
to 20 27 to 29 w s e 12 to 19 21
- 688 O'Neal Thomas e pt 13 e pt 14 lr
- 689 O'Neal William w pt 14 lr
- 729 O'Connor Cornelius w pt 27 lr
- 730 O'Conarr Mathew e pt 27 lr

- 685 Pierce John n pt 2 lr
- 708 Pellow Wm. J. e pt 23, LR

- 627 Quaid James w pt 1 lr
- 628 Quaid John e pt 1 lr

- 577 Richardson Thomas n pt 1, 3 wd
- 578 Richardson Wm n pt 2, 3 wd

- 396 Shea John n pt 3 5 wd
- 397 Styles Simon n pt 7 5 wd
- 440 Shey Thomas s pt 6 7 wd
- 439 Shea John n w e 3 4 s p w p 15 wd
- 451 Sullivan Patrick s p 15 s e q 1 4 wd
- 457 Shea Daniel s p 15 s e q 1 4 wd
- 676 Sullivan Daniel s e pt 2
- 677 Sullivan Daniel n pt 11
- 686 Sullivan Thomas w pt 18 lr
- 702 Sullivan Jeremiah s p 19 4 L n s p 67 s p 8 8 8
- 443 Sullivan John E s p t s pt 6 7

303	Pennington W. L.	n e pt 12	10	ed	0
304	Phillips William	pt 12	10	(30 31 32)	0
310	Phillips Samuel	pt 12	9		0
312	Phillips Alexander	e pt 11	9		0
313	Phillips Hugh	w pt 11	9		0
318	Phillips William	w pt 9	9		0
320	Phillips Alexander	w pt n h 7	9 8		0
374	Phillips Henry	a pt 9	8		0
302	Pentland Thomas	w h 10	6		0
305	Phelan Philip	n pt 8	6		0
409	Pierce William	se 3	7		0
412	Pierce Thomas	w pt 3	7		0
413	Pierce Samuel	e pt 2	7		0
414	Pierce Natpaniel	w pt 2	7		0
282	Rogers Edward	n pt s pt 3	10		0
314	Rundman David	se p a p 10	10	9 8	0
323	Reed Paul	s pt 6	9		0
359	Roach William	n w pt 2	8		0
360	Riddle John	e pt 2	8		0
389	Reed John	e pt 10	6		0
393	Reed James	n pt 9	6		0
276	Scott Francis	n p 2 10 w pt 1	10 10	see sub d no. 3.	0
293	Speers Joseph	e pt 7 w pt 8	10	nd	0
297	Stothers John	e pt 9	10		0
301	Sherwood William	n pt n pt 6 w p e p 8	11 10		0
315	Shackelton William	w pt 8 pt 10	9	ed	0
329	Sheehan John	n pt 3	9		0
354	Sinnot Nicholas	s pt 1	8	wd	0
376	Smeltzer Paul	w pt 11	8		0
402	Stothers William	e 1 5	6	ed	0
404	Savage James	w pt w pt 5	6		0
405	Shackelton Matthew	n t 4	6		0
408	Scott Andrew	n pt 3	6		0
410	Scott John	e pt 2	6		0
278	Sullivan Jeremiah	n pt 1	10		0
317	Stewart Robert A.	ne 1 9	9		0
356	Treleaven W. J.	n pt 6	8		0
373	Twamly George	n pt 9 & 10	8		0
380	Treleaven Richard	10	7		0
381	Treleaven Robert	w pt 7	7		0
400	Takaherry Joseph	n pt 6	7		0
503	Tigert William	s pt 9	6		0
291	Vint James	n pt w pt 7	10		0
384	Vogan Robert	n pt 12	6		0
285	Wright William	n pt 4	10		0
308	Watson William	s pt 12	10		0
315	Wilson Mark	se pt 9	9		0
361	Whitty Peter	n pt 3	8		0

01 Armo
 13 Armo
 14 Armo
 24 Ande
 34 Andr
 36 Andr
 80 Agne
 80 Agne
 86 Agn
 86 Albn
 02 Alton
 77 Bell J
 80 Barnh
 81 Barnh
 85 Bolan
 06 Bartl
 76 Beato
 77 Beato
 82 Bark
 153 Barfr
 303 Barbo
 303 Barbo
 303 Barbo
 306 Barsh
 235 Bowl
 233 Bowl
 72 Curre
 95 Camp
 95 Camp
 09 Culbe
 20 Cant
 21 Culbe
 32 Curry
 34 Culbe
 69 Outhl
 36 Cour
 66 Doyle
 173 Davi
 174 Davi
 179 Drid
 239 Dick
 197 Ell's
 227 Ford
 98 Gilm
 402 Good
 102 Good
 103 Good

10

140	Stevenson Maxwell	n pt n pt	12 13nd	
187	Stoud David	s pt 10	14nd	
275	Scott Francis	s pt 2	11wd	
300	Thompson James	n pt 12	11nd	
118	Webster Robert	e h 8	13nd	
119	Webster John	w h 8	13nd	
193	Webster Daniel	n e p 11	14nd	
194	Webster James	s pt 11	14nd	
196	Webster Daniel	s pt 12	14nd	
216	Wright Robert	s e pt 5	11nd	
230	Wallace Maurice	s pt w h 1	11wd	
231	Wallace Patrick	w pt w pt	11wd	

Division No 4

No. of Rows

	NAME.	LOT	CON, ST.	O. or T.
608	Austin Philip	e pt 16	L. R.	
705	Austin Nicholas	n p 23	1 r	
729	Austin Morgan	n p 28	1 r	
438	Beckly John	n pt 5	5 wd	
456	Baxter John	n pt 3	5 wd	
581	Bayden John	Q pt n pt 3	4 wd	
667	Baxter William	s pt 3	1 r	
711	Boyd John	21	1 r	
261	Bowler John	s pt 9	10 wd	
264	Bowler Maurice	n w d 7	10 wd	
265	Bowler Michael	n e q 7	10 wd	
248	Campbell Alex	w h 10	10wd	
268	Crouk Thomas	n w 6	10wd	
437	Currel Edward	s p 6	6wd	
582	Caldwell George	s pt 1	2wd	
629	Crawford James Jr.		1 r	
630	Crawford James	wellington st e 32 to 35 (36 s pt) Pt Albert w. st w 53 to 57 s p 8 syd s e 34 to 38 w 38 w of A st. 15 16 s of A st 16		
652	Courtney John	M. s. s. s. w 26 15 e 29 27		
680	Currel George	e pt 6	1 r	
710	Carrick Robert	pt 21 23	1 r	
254	Dolan Dennis	w p 11	10 w d	
267	Dolan Michael	s p 11	10 w d	
297	Dreunan James	s pt 5 6	10 w d	
298	Dreunan John	w pt 6	10 w d	

641 Dreunan
642 Dalton
643 Dalton
644 Dalton
645 Dalton
646 Dalton
647 Dalton
648 Dalton
649 Dalton
650 Dalton
651 Dalton
652 Dalton
653 Dalton
654 Dalton
655 Dalton
656 Dalton
657 Dalton
658 Dalton
659 Dalton
660 Dalton
661 Dalton
662 Dalton
663 Dalton
664 Dalton
665 Dalton
666 Dalton
667 Dalton
668 Dalton
669 Dalton
670 Dalton
671 Dalton
672 Dalton
673 Dalton
674 Dalton
675 Dalton
676 Dalton
677 Dalton
678 Dalton
679 Dalton
680 Dalton
681 Dalton
682 Dalton
683 Dalton
684 Dalton
685 Dalton
686 Dalton
687 Dalton
688 Dalton
689 Dalton
690 Dalton
691 Dalton
692 Dalton
693 Dalton
694 Dalton
695 Dalton
696 Dalton
697 Dalton
698 Dalton
699 Dalton
700 Dalton
701 Dalton
702 Dalton
703 Dalton
704 Dalton
705 Dalton
706 Dalton
707 Dalton
708 Dalton
709 Dalton
710 Dalton
711 Dalton
712 Dalton
713 Dalton
714 Dalton
715 Dalton
716 Dalton
717 Dalton
718 Dalton
719 Dalton
720 Dalton
721 Dalton
722 Dalton
723 Dalton
724 Dalton
725 Dalton
726 Dalton
727 Dalton
728 Dalton
729 Dalton
730 Dalton
731 Dalton
732 Dalton
733 Dalton
734 Dalton
735 Dalton
736 Dalton
737 Dalton
738 Dalton
739 Dalton
740 Dalton
741 Dalton
742 Dalton
743 Dalton
744 Dalton
745 Dalton
746 Dalton
747 Dalton
748 Dalton
749 Dalton
750 Dalton
751 Dalton
752 Dalton
753 Dalton
754 Dalton
755 Dalton
756 Dalton
757 Dalton
758 Dalton
759 Dalton
760 Dalton
761 Dalton
762 Dalton
763 Dalton
764 Dalton
765 Dalton
766 Dalton
767 Dalton
768 Dalton
769 Dalton
770 Dalton
771 Dalton
772 Dalton
773 Dalton
774 Dalton
775 Dalton
776 Dalton
777 Dalton
778 Dalton
779 Dalton
780 Dalton
781 Dalton
782 Dalton
783 Dalton
784 Dalton
785 Dalton
786 Dalton
787 Dalton
788 Dalton
789 Dalton
790 Dalton
791 Dalton
792 Dalton
793 Dalton
794 Dalton
795 Dalton
796 Dalton
797 Dalton
798 Dalton
799 Dalton
800 Dalton
801 Dalton
802 Dalton
803 Dalton
804 Dalton
805 Dalton
806 Dalton
807 Dalton
808 Dalton
809 Dalton
810 Dalton
811 Dalton
812 Dalton
813 Dalton
814 Dalton
815 Dalton
816 Dalton
817 Dalton
818 Dalton
819 Dalton
820 Dalton
821 Dalton
822 Dalton
823 Dalton
824 Dalton
825 Dalton
826 Dalton
827 Dalton
828 Dalton
829 Dalton
830 Dalton
831 Dalton
832 Dalton
833 Dalton
834 Dalton
835 Dalton
836 Dalton
837 Dalton
838 Dalton
839 Dalton
840 Dalton
841 Dalton
842 Dalton
843 Dalton
844 Dalton
845 Dalton
846 Dalton
847 Dalton
848 Dalton
849 Dalton
850 Dalton
851 Dalton
852 Dalton
853 Dalton
854 Dalton
855 Dalton
856 Dalton
857 Dalton
858 Dalton
859 Dalton
860 Dalton
861 Dalton
862 Dalton
863 Dalton
864 Dalton
865 Dalton
866 Dalton
867 Dalton
868 Dalton
869 Dalton
870 Dalton
871 Dalton
872 Dalton
873 Dalton
874 Dalton
875 Dalton
876 Dalton
877 Dalton
878 Dalton
879 Dalton
880 Dalton
881 Dalton
882 Dalton
883 Dalton
884 Dalton
885 Dalton
886 Dalton
887 Dalton
888 Dalton
889 Dalton
890 Dalton
891 Dalton
892 Dalton
893 Dalton
894 Dalton
895 Dalton
896 Dalton
897 Dalton
898 Dalton
899 Dalton
900 Dalton
901 Dalton
902 Dalton
903 Dalton
904 Dalton
905 Dalton
906 Dalton
907 Dalton
908 Dalton
909 Dalton
910 Dalton
911 Dalton
912 Dalton
913 Dalton
914 Dalton
915 Dalton
916 Dalton
917 Dalton
918 Dalton
919 Dalton
920 Dalton
921 Dalton
922 Dalton
923 Dalton
924 Dalton
925 Dalton
926 Dalton
927 Dalton
928 Dalton
929 Dalton
930 Dalton
931 Dalton
932 Dalton
933 Dalton
934 Dalton
935 Dalton
936 Dalton
937 Dalton
938 Dalton
939 Dalton
940 Dalton
941 Dalton
942 Dalton
943 Dalton
944 Dalton
945 Dalton
946 Dalton
947 Dalton
948 Dalton
949 Dalton
950 Dalton
951 Dalton
952 Dalton
953 Dalton
954 Dalton
955 Dalton
956 Dalton
957 Dalton
958 Dalton
959 Dalton
960 Dalton
961 Dalton
962 Dalton
963 Dalton
964 Dalton
965 Dalton
966 Dalton
967 Dalton
968 Dalton
969 Dalton
970 Dalton
971 Dalton
972 Dalton
973 Dalton
974 Dalton
975 Dalton
976 Dalton
977 Dalton
978 Dalton
979 Dalton
980 Dalton
981 Dalton
982 Dalton
983 Dalton
984 Dalton
985 Dalton
986 Dalton
987 Dalton
988 Dalton
989 Dalton
990 Dalton
991 Dalton
992 Dalton
993 Dalton
994 Dalton
995 Dalton
996 Dalton
997 Dalton
998 Dalton
999 Dalton
1000 Dalton

648 Drusman George 6 9
 Dalton Maurice n p s & 9 con 8. sept 20 L r o
 Dalton John a p t n p t 3 7 w d o
 649 Leonard Jeremiah n p n p 3 7 see subdiv no 2 o
 Dalton Maurice 7 con 7. n e 17 8 o
 650 Deen James 7 8 7 8 w p o
 651 Dewey Alexander o p t a p t 3 4 w d o
 652 Deane George s e p l 3 w d o
 653 Dowson George 3 3 w d t
 654 Logharty John l r e 9 10 e Col st 7 to 12 A r t
 w 7 to 12 e a s t 7 to 12 w of sy.
 st 7 to 12 e l r 12 o

655 Dalton John 6 6 w d 11 l r o
 656 Deen Michael 15 l r o
 700 Dalton Charles s p t 18 l r o
 708 Dalton Michael 20 l r o
 684 Dalton James s 12 l r o

430 Egan Francis 6 6 1/2 1 x 5 0 2 C

271 Ferguson William a p 4 10 w d o
 272 Farris David n p t 3 10 w o o
 338 Farris John n w o e p t 4 9 9 o
 658 Finn James N. M s t 3, 4, 6 o
 673 Flynn Edward s p t 6 1 r o
 674 Finn John n p s e p s l r s p a p 3 5 w d o
 681 Flynn Denis s p t 10 1 r o
 682 Flynn Jeremiah n p t 10 1 r o
 727 Flynn Edward s p t 28 1 r o
 340 Farris Robert s w q 4 9 e p 5 9 o

262 Griffin John w p 8 10 w d o
 269 Garbut George n w q 4 10 w d o
 335 Griffin Jeremiah s p t 3 n p 3 9 o
 424 Gawley Abraham w p t 3 6 w d o
 585 Graham William l s p t 1 w d o
 e s y. st. 39 40 w y d st. 39 Park
 lot 4 on S Street 9 w of 1 r w a
 st 27 to 30.

635 Good Donald w e n 1 to 5, e of 1 r l to 10 w s t
 s 2 to 5 Ann st n l to 3 A s t 5
 2348.

650 Graham G. E. s w s t 37 to 39 Park lot 1 s n
 s p l 2 n M s t E 1 r p k l 4 w w s t
 42 to 47 e s y s t 42 to 47 n m s t h t
 40 w of s y s t 19 o

660 Graham Robert w of 1 r p l o t 10 s p 8 w of o s t 7
 to 12 e of Huron s t 7 to 12 o

678 Galtress George w p 8 1 r p 3 4 w d o
 679 Griffin Timothy w p 9 1 r o
 693 Griffin Joseph w p 16 1 r o
 700 Grant Donald s e p t 22 1 r o

452 Hepples James s p t 4 4 w d o
 480 Higgins Marmion s e q l 5 w d o

621 Hayden W. J. 5 and 6 1 r p a 17 and 18 w a s y
 s t 31 e a t

634 Hawkes James 1 r 5 and 6 Harrison s t w 1 and
 2 Toronto s t w 1 e 1 o

or T.

35 s p t)

37 s p t)

4 A s t

e 26 27

66	McIntosh Robert	s w q 3	13wd
67	McDonald Arch	p p 3	13wd
68	McLanes John	s t 4	13wd
78	McLean Alexander	pt 2 13 s e p t 3	12wd
82	McNairns Patrick	n pt 1	12
84	McDonald Alex	w h 1	12
86	McLean Donald	w h 1	13 w d
89	McNay William	p pt 1	13 e d
90	McGrory Arthur	e pt 1	13nd
93	McDonald James	e pt 2	12nd
96	McKenzie Alex	w p 3	12nd
190	McKenzie Neil	e p 3	12nd
104	McKay Wm	e p 4	12nd
105	McKenzie George	w pt 5	12nd
110	McDonagh Wm	w p w p 6	12nd
111	McDonagh John	e h a p 6	12nd
196	McGuire Patrick	e h e h 8 e p 9	12nd
198	McDonagh Alex	s p 9	12nd
156	McKay Duncan	n w p 4	14 wd
156	McKay Murd	e h n w p 4	14wd
157	McKay Angus	e p 4	14wd
172	McGill David	w h 2	14nd
174	McKenzie Peter	w p 3	14nd
179	McKenzie John	e pt 3	14nd
190	McIntosh William	n pt 12	14nd
245	McDonagh Alex	s pt s e pt 5	11nd
222	McLean Alex	e pt 2	11 nd
75	Nickolson Coll	s pt w p t 5	13wd
163	Nixon John	s pt 1	9nd
209	Nixon George	w pt 10	11nd
204	Otway Henry	s e pt 12	11nd
97	Pickering Robert	n pt 3	13nd
168	Pickering John	e pt 1	14 w d
238	Pagon William	n pt 4	11wd
220	Quinn Daniel	n pt 3	11 e d
75	Row David	e pt 3	12 w d
125	Reed Robert	s p s p 9	10 13 ed
135	Ritchie William	e p 11	13nd
183	Rivett Shadrach	s pt 7	14nd
191	Robb Charles	n e pt 10	14nd
218	Reed Henry	s pt 4	11nd
219	Reed Thomas	n pt 4	11nd
229	Rourke Jeremiah	w h e h 1	11wd
228	Rourke John	e h e h 1	11wd
71	Smith John	n pt n pt 4	12 wd
111	Spears Joseph	s pt 6	12 e d
161	Sutherland Donald	s w q 2	14nd
184	Smart Alexander	n pt 7	14nd
180	Stroud James	s pt 10	14nd
196	Somerville James	n e pt 12	14nd
207	Smeltzer John	w pt 11	11nd
214	Spears William	n pt 8	11nd
115	Stevenson Thomas	n pt 7	15nd
115	Stevenson James	n pt 7	15nd

26

107	Grady John	s w pt 6	13ED	0
107	Grady William	s w pt 6	13ED	0
108	Graham Andrew	e pt 5	13ED	0
127	Gardner W. T.	e h 9	12ED	0
129	Gardner William	e pt 10	12ED	0
130	Gardner J. H.	e pt 10	12ED	0
131	Gardner J. R.	n pt 10	12ED	0
192	Graham William	n w pt 11	14	T
89	Hogan Patrick	e pt 1	12 w d	0
91	Hackett Walter	n pt 1	12 ed	0
94	Hogan William	w h 2	15ED	0
112	Helem Thomas	e pt 6	13ED	0
116	Hunter Robert	e pt 7	13ED	0
117	Houston John	e pt 7	13ED	0
117	Hunter William	w pt 8	12ED	0
123	Hunter Thomas	e pt 9	13ED	0
123	Hunter J. James	e pt 9	13ED	0
158	Hunter Kenneth	n w pt 3	14ED	0
210	Hackett Alex	e pt 9	11ED	0
211	Hackett Joseph	w pt 9	11ED	0
224	Hogan John	w pt 2	11ED	0
208	Harper William	e p 10	11ED	0
190	Irwin John	n w q 10	14ED	0
212	Irwin James	8	10ED	0
234	Johnstone James	e pt s pt 3	11 n w d	0
235	Jamieson John	w pt s pt 3	11 see sub div no. 5	0
236	Johnston John	s pt 4	11wd	0
237	Johnston Jno jr	s pt 4	12wd	0
167	Kirk Samuel	n e q 1	14 wd	0
221	Lane William	e p 3	11 ed	0
222	Lane John	s - pt 3	11wd	0
74	Matheson Kenneth	w pt 3	12 wd	0
76	Matheson Dugald	w pt 2	12 wd	0
87	Murchison Donald	e pt 1	13WD	0
92	Matheson John	w h 2	12 ed	0
92	Matheson Dugald	w h 2	12ED	0
98	Murdoch Alex	n pt 4	13ED	0
122	Morrison Patrick	w h e h 8	12ED	0
137	Mercer James	e pt 12	12ED	0
138	Murdoch John	s pt 12	13ED	0
139	Murdoch David	e pt n p 12	13EE	0
139	Murdoch Andrew	s p n p 12	13ED	0
160	Morrison Angus	s pt 3	14wd	0
163	Murray John	n e pt 3	14wd	0
164	Murray William	n pt 2	14wd	0
165	Murray Donald	s pt 2	14wd	0
170	Murray John	w pt n pt 1	14wd	0
181	Murdoch William	e q 1	14wd	0
201	Mullin James	s pt 12	11ED	0
201	Mullin Robert	s w pt e h p 11	ED	7
213	Mullin Andrew	7	11ED	0
63	McKenzie Alex. L.	w pt 4	13wd	00
64	McLinnis John	n e q 4	13wd	00

85	McL
86	McD
87	McL
88	McN
89	McD
90	McL
91	McN
92	McG
93	McD
94	McK
190	McK
104	McK
105	McK
110	McD
111	McD
196	McG
126	McD
155	McK
156	McK
157	McK
172	McG
174	McK
179	McK
190	McL
245	McL
222	McL
75	Nick
188	Nix
209	Nix
204	Otw
97	Pick
168	Pick
238	Pag
220	Qui
75	Row
125	Ree
135	Rit
185	Riv
191	Rob
218	Ree
219	Ree
229	Roy
238	Roy
71	Sut
111	Sp
161	Sut
184	Sm
190	Sto
196	Sto
207	Sto
214	Sp
115	St
115	St

Technical and Bibliographic Notes / Notes techniques et bibliographiques

The Institute has attempted to obtain the best original copy available for filming. Features of this copy which may be bibliographically unique, which may alter any of the images in the reproduction, or which may significantly change the usual method of filming, are checked below.

L'Institut a microfilmé le meilleur exemplaire qu'il lui a été possible de se procurer. Les détails de cet exemplaire qui sont peut-être uniques du point de vue bibliographique, qui peuvent modifier une image reproduite, ou qui peuvent exiger une modification dans la méthode normale de filmage sont indiqués ci-dessous.

- Coloured covers/
Couverture de couleur
- Covers damaged/
Couverture endommagée
- Covers restored and/or laminated/
Couverture restaurée et/ou pelliculée
- Cover title missing/
Le titre de couverture manque
- Coloured maps/
Cartes géographiques en couleur
- Coloured ink (i.e. other than blue or black)/
Encre de couleur (i.e. autre que bleue ou noire)
- Coloured plates and/or illustrations/
Planches et/ou illustrations en couleur
- Bound with other material/
Relié avec d'autres documents
- Tight binding may cause shadows or distortion
along interior margin/
La reliure serrée peut causer de l'ombre ou de la
distorsion le long de la marge intérieure
- Blank leaves added during restoration may appear
within the text. Whenever possible, these have
been omitted from filming/
Il se peut que certaines pages blanches ajoutées
lors d'une restauration apparaissent dans le texte,
mais, lorsque cela était possible, ces pages n'ont
pas été filmées.

- Coloured pages/
Pages de couleur
- Pages damaged/
Pages endommagées
- Pages restored and/or laminated/
Pages restaurées et/ou pelliculées
- Pages discoloured, stained or foxed/
Pages décolorées, tachetées ou piquées
- Pages detached/
Pages détachées
- Showthrough/
Transparence
- Quality of print varies/
Qualité inégale de l'impression
- Continuous pagination/
Pagination continue
- Includes index(es)/
Comprend un (des) index

Title on header taken from: /
Le titre de l'en-tête provient:

- Title page of issue/
Page de titre de la livraison *
- Caption of issue/
Titre de départ de la livraison
- Masthead/
Générique (périodiques) de la livraison *

- Additional comments: /
Commentaires supplémentaires:

There are some creases in the middle of the pages.

This item is filmed at the reduction ratio checked below/
Ce document est filmé au taux de réduction indiqué ci-dessous.

10X	12X	14X	16X	18X	20X	22X	24X	26X	28X	30X	32X
				✓							

The copy filmed here has been reproduced thanks to the generosity of:

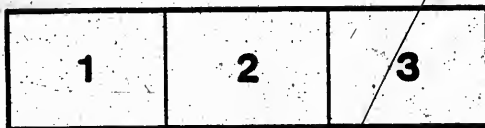
Archives of Ontario
Toronto

The images appearing here are the best quality possible considering the condition and legibility of the original copy and in keeping with the filming contract specifications.

Original copies in printed paper covers are filmed beginning with the front cover and ending on the last page with a printed or illustrated impression, or the back cover when appropriate. All other original copies are filmed beginning on the first page with a printed or illustrated impression, and ending on the last page with a printed or illustrated impression.

The last recorded frame on each microfiche shall contain the symbol \rightarrow (meaning "CONTINUED"), or the symbol ∇ (meaning "END"), whichever applies.

Maps, plates, charts, etc., may be filmed at different reduction ratios. Those too large to be entirely included in one exposure are filmed beginning in the upper left hand corner, left to right and top to bottom, as many frames as required. The following diagrams illustrate the method:



L'exemplaire filmé fut reproduit grâce à la générosité de:

Archives of Ontario
Toronto

Les images suivantes ont été reproduites avec le plus grand soin, compte tenu de la condition et de la netteté de l'exemplaire filmé, et en conformité avec les conditions du contrat de filmage.

Les exemplaires originaux dont la couverture en papier est imprimée sont filmés en commençant par le premier plat et en terminant soit par la dernière page qui comporte une empreinte d'impression ou d'illustration, soit par le second plat, selon le cas. Tous les autres exemplaires originaux sont filmés en commençant par la première page qui comporte une empreinte d'impression ou d'illustration et en terminant par la dernière page qui comporte une telle empreinte.

Un des symboles suivants apparaîtra sur la dernière image de chaque microfiche, selon le cas: le symbole \rightarrow signifie "A SUIVRE", le symbole ∇ signifie "FIN".

Les cartes, planches, tableaux, etc., peuvent être filmés à des taux de réduction différents. Lorsque le document est trop grand pour être reproduit en un seul cliché, il est filmé à partir de l'angle supérieur gauche, de gauche à droite, et de haut en bas, en prenant le nombre d'images nécessaire. Les diagrammes suivants illustrent la méthode.

