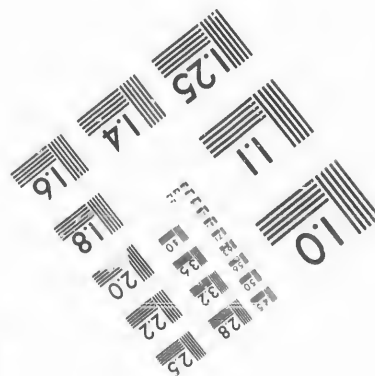
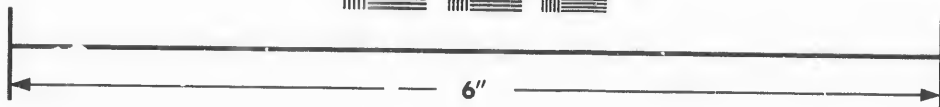
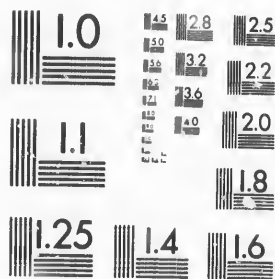


**IMAGE EVALUATION  
TEST TARGET (MT-3)**



**Photographic  
Sciences  
Corporation**

23 WEST MAIN STREET  
WEBSTER, N.Y. 14580  
(716) 872-4503

**CIHM/ICMH  
Microfiche  
Series.**

**CIHM/ICMH  
Collection de  
microfiches.**



Canadian Institute for Historical Microreproductions / Institut canadien de microreproductions historiques

**© 1986**

Technical and Bibliographic Notes/Notes techniques et bibliographiques

The Institute has attempted to obtain the best original copy available for filming. Features of this copy which may be bibliographically unique, which may alter any of the images in the reproduction, or which may significantly change the usual method of filming, are checked below.

L'Institut a microfilmé le meilleur exemplaire qu'il lui a été possible de se procurer. Les détails de cet exemplaire qui sont peut-être uniques du point de vue bibliographique, qui peuvent modifier une image reproduite, ou qui peuvent exiger une modification dans la méthode normale de filmage sont indiqués ci-dessous.

- |  |  |
|--|--|
| <input type="checkbox"/> Coloured covers/<br>Couverture de couleur   | <input checked="" type="checkbox"/> Coloured pages/<br>Pages de couleur  |
| <input type="checkbox"/> Covers damaged/<br>Couverture endommagée  | <input type="checkbox"/> Pages damaged/<br>Pages endommagées   |
| <input type="checkbox"/> Covers restored and/or laminated/<br>Couverture restaurée et/ou pelliculée  | <input type="checkbox"/> Pages restored and/or laminated/<br>Pages restaurées et/ou pelliculées  |
| <input type="checkbox"/> Cover title missing/<br>Le titre de couverture manque   | <input checked="" type="checkbox"/> Pages discoloured, stained or foxed/<br>Pages décolorées, tachetées ou piquées   |
| <input type="checkbox"/> Coloured maps/<br>Cartes géographiques en couleur   | <input checked="" type="checkbox"/> Pages detached/<br>Pages détachées   |
| <input type="checkbox"/> Coloured ink (i.e. other than blue or black)/<br>Encre de couleur (i.e. autre que bleue ou noire)   | <input checked="" type="checkbox"/> Showthrough/<br>Transparence   |
| <input type="checkbox"/> Coloured plates and/or illustrations/<br>Planches et/ou illustrations en couleur  | <input type="checkbox"/> Quality of print varies/<br>Qualité inégale de l'impression   |
| <input type="checkbox"/> Bound with other material/<br>Relié avec d'autres documents   | <input type="checkbox"/> Includes supplementary material/<br>Comprend du matériel supplémentaire   |
| <input type="checkbox"/> Tight binding may cause shadows or distortion<br>along interior margin/<br>La reliure serrée peut causer de l'ombre ou de la<br>distorsion le long de la marge intérieure   | <input type="checkbox"/> Only edition available/<br>Seule édition disponible   |
| <input type="checkbox"/> Blank leaves added during restoration may<br>appear within the text. Whenever possible, these<br>have been omitted from filming/<br>Il se peut que certaines pages blanches ajoutées<br>lors d'une restauration apparaissent dans le texte,<br>mais, lorsque cela était possible, ces pages n'ont<br>pas été filmées. | <input type="checkbox"/> Pages wholly or partially obscured by errata<br>slips, tissues, etc., have been refilmed to<br>ensure the best possible image/<br>Les pages totalement ou partiellement<br>obscurcies par un feuillet d'errata, une pelure,<br>etc., ont été filmées à nouveau de façon à<br>obtenir la meilleure image possible. |
| <input checked="" type="checkbox"/> Additional comments:/<br>Commentaires supplémentaires:   |  |

This item is filmed at the reduction ratio checked below/  
Ce document est filmé au taux de réduction indiqué ci-dessous.

10X	14X	18X	22X	26X	30X
			✓		
12X	16X	20X	24X	28X	32X

The copy filmed here has been reproduced thanks to the generosity of:

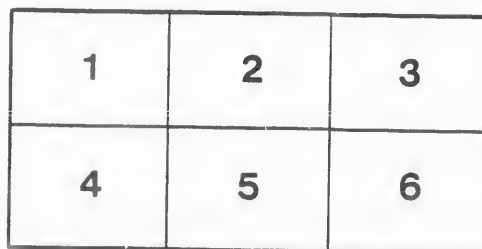
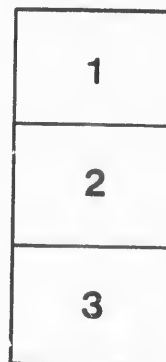
D. B. Weldon Library  
University of Western Ontario  
(Regional History Room)

The images appearing here are the best quality possible considering the condition and legibility of the original copy and in keeping with the filming contract specifications.

Original copies in printed paper covers are filmed beginning with the front cover and ending on the last page with a printed or illustrated impression, or the back cover when appropriate. All other original copies are filmed beginning on the first page with a printed or illustrated impression, and ending on the last page with a printed or illustrated impression.

The last recorded frame on each microfiche shall contain the symbol  $\rightarrow$  (meaning "CONTINUED"), or the symbol  $\nabla$  (meaning "END"), whichever applies.

Maps, plates, charts, etc., may be filmed at different reduction ratios. Those too large to be entirely included in one exposure are filmed beginning in the upper left hand corner, left to right and top to bottom, as many frames as required. The following diagrams illustrate the method:



L'exemplaire filmé fut reproduit grâce à la générosité de:

D. B. Weldon Library  
University of Western Ontario  
(Regional History Room)

Les images suivantes ont été reproduites avec le plus grand soin, compte tenu de la condition et de la netteté de l'exemplaire filmé, et en conformité avec les conditions du contrat de filmage.

Les exemplaires originaux dont la couverture en papier est imprimée sont filmés en commençant par le premier plat et en terminant soit par la dernière page qui comporte une empreinte d'impression ou d'illustration, soit par le second plat, selon le cas. Tous les autres exemplaires originaux sont filmés en commençant par la première page qui comporte une empreinte d'impression ou d'illustration et en terminant par la dernière page qui comporte une telle empreinte.

Un des symboles suivants apparaîtra sur la dernière image de chaque microfiche, selon le cas: le symbole  $\rightarrow$  signifie "A SUIVRE", le symbole  $\nabla$  signifie "FIN".

Les cartes, planches, tableaux, etc., peuvent être filmés à des taux de réduction différents. Lorsque le document est trop grand pour être reproduit en un seul cliché, il est filmé à partir de l'angle supérieur gauche, de gauche à droite, et de haut en bas, en prenant le nombre d'images nécessaire. Les diagrammes suivants illustrent la méthode.

ire  
détails  
es du  
modifier  
er une  
filmage

es

errata  
to

pelure.  
n à

32X

THE CROWNING  
OF MUSIC



GRAND  
OPERA HOUSE,  
LONDON, ONT  
SEASO  
1899-1900.

*Rosa Eva Jay, Jan 5-6  
1900*

• SMITH BROS., •

TELEPHONE  
538

LEADING PLUMBERS.

265 DUNDAS STREET,

LONDON, ONT.

Advertiser Job Dept.

WHERE PEOPLE CONGREGATE, THERE ADVERTISE.

† THE †  
..PROGRAMME...

The primary idea of this Programme is, of course, to enlighten the audience as to the personnel of the artists taking part in the performances, incidentally to serve as a guide to the plot of the piece, and generally to give such information as will tend to the enjoyment of the auditor.

But there is a fund of information in the advertisements that may be seriously considered with profit.

The publishers are prepared to attend to all business in the way of general and special advertising.

Respectfully,  
BELTON & ROOT,  
*Advertising Agents.*

HARRY MCKENNA,

...DEALER IN...

CHOICE TOBACCONIST'S GOODS,

Always Open after the Opera.

Retail and Wholesale.

225 DUNDAS STREET.

Read and Reflect.

The management reserves the right to refuse admission to anyone.

DOORS open for matinees at 2 p. m. ; curtain rises at 2.30 p. m.

Evenings.—Doors open at 7.30, and curtain rises at 8.15 p. m. sharp.

Tickets can be reserved two days in advance without extra charge.  
Office open from 9 a. m. to 5 p. m.

Seats can be secured by mail, telegraph or telephone. Telephone 732.

Seats ordered by Telephone or in Person, and not called for by 7.30 o'clock on the night of performance, will then be sold to avoid loss to the Theatre.

Physicians are requested to register at the Box Office, leaving seat number as this will enable Ushers to find them, if called for, without disturbing the audience.

Children in arms not admitted to evening performances. Children 7 years old or over, full price.

Patrons will confer a favor by reporting to the management any incivility or inattention on the part of the employees, and annoyances of any nature.

If the individual members of an audience would stop to think for just an instant, they would undoubtedly appreciate the fact that the habit of rising from their seat and leaving the theatre before the curtain falls, is a most annoying one, and one that should be stopped. We therefore beg our audiences to kindly remain in their seats until the close of the performance.

Carriages can be ordered at the Box Office or of the Chief Usher.

For all lost articles, apply at Box Office.

It is strange, but there is a class of people that seem to take an intense delight in bespattering the floor with tobacco juice, and in being boisterous and using profane language. These people should know at once that the courts authorize their immediate expulsion, should the management seem fit to exercise its rights.

# Slater Bros

...TAILORS...

Telephone 844.

399 Richmond St., LONDON.

## Grand Opera House

LONDON, ONT.

C. J. WHITNEY, Lessee.

SEASON 1899-1900.

A. E. ROOT, Manager.

### PROGRAMME.

Two Nights, Friday and Saturday, Jan. 5 and 6.  
Matinee Saturday at 2.30 for Ladies only.  
No Gentlemen admitted.

## ..ANNA EVA FAY..

Anna Eva Fay Uses the Empire Typewriter.

Programme continued on next page.

BELTON  
AND  
ROOT

Bill Posting, Distrib-  
uting and General  
Advertising Agents

Control all the Bill Boards and Dead Walls throughout the City. Population of City, 40,000. All orders for Bill Posting, Distributing, Card Tacking, and General Advertising for Western Ontario will receive prompt attention.

OFFICE:—BOX OFFICE OPERA HOUSE

The London Daily News has the largest sworn cir-

SMOKE THE 



VETERAN

10c. Cigar.



MANUFACTURED BY

W. C. ROSS, London.

---

---

**PROGRAMME.**



**SPECIAL NOTICE**—Read carefully. Everything done is the result of natural causes.  
**SPECIAL EXPLANATION TO THE PUBLIC**—Miss Fay wishes it distinctly understood that the results produced, especially in the "Somnolency" and "Materialization," are weird and bewildering, but the forces and means employed, although at present not thoroughly understood by the mass of people, are perfectly natural, and may, at some future day, be utilized by scientific workers.

**PART FIRST.**

**ANNA EVA FAY**

Will introduce many Novel Features in her peculiar  
line of Cabinet Experiments.

Miss Fay having appeared for nine consecutive months at the Queen's Concert Rooms, London, and later for three weeks at the Crystal Palace. For three months Miss Fay was the guest of Prof. Wm. Crooks, F.R.S., No. 20, Mornington Road, W. C. During that time, Prof. Crooks built the Galvanometer, an electrical machine to test physical demonstration.

---

Programme continued on next page.

---

---

Buy your **DIAMONDS** and **WATCHES**, at  
**WARD'S JEWELRY** 374 Richmond Street.

---

Charlie, please take me to the Fashion  
Restaurant, No. 357 Richmond St., to have  
some Oysters after the Show.



circulation in Canada, Toronto and Montreal excepted.

**High Grade**  
**Toilet Soaps,**  
**Perfumes and**  
**Toilet Powders.**

**A NEW IMPORTATION  
 ...JUST RECEIVED...**

**W. T. STRONG & CO.**  
*Dispensing Chemists,*  
 124 DUNDAS STREET,  
 LONDON.

## PROGRAMME.

During Parts First and Third, in which Miss Fay appears, and during which she is at such a high mental strain, it is necessary for her to have a complete release from the same, sometime during the performance, consequently

### PART SECOND

WILL CONSIST OF BRIGHT AND INTERESTING

## SPECIALTIES

INTRODUCED BY VARIOUS MEMBERS OF THE COMPANY.

Programme continued on next page.

....Free Admission to this Theatre may be made by buying....

# GAS

# COKE

Now \$4.00 per Ton.

Will Advance Later On.

Equal in every respect  
to Hard Coal

.....FOR.....  
Furnaces, Base Burners,  
Ranges and Grates.

CITY GAS COMPANY, 401 Clarence Street.

# Smoke David Harum Cigar.

## A. WOLF, Tobacconist

Has an assortment of Imported Cigars that is worth considering.

366 Richmond Street.  
202½ Dundas Street.

## F. N. Harvey, L.D.S.

DENTIST

204 DUNDAS STREET.

## WM. STEVELY & SON,

—DEALERS IN—

Cooking and Heating Stoves and Ranges for Coal or Wood, Lamp Goods, Cutlery and General House Furnishings.

362 RICHMOND STREET.

## OFFICE RESTAURANT

Opposite the Richmond Street exit of Opera House.

Choice Wines, Liquors and Cigars.  
Dining Parlors Upstairs.

— D. SARE.

# PROGRAMME.

No intermission between Part Second and

## PART THIRD.

The entertainment will close by placing MISS FAY in a hypnotic condition and she will give her weird and startling vision of what she sees and hears in Hypnotic Dreamland by

## “SOMNOLENCY.”

**SPECIAL NOTICE**—Miss Fay receives hundreds of letters and is obliged to employ two secretaries to assist in her correspondence. Letters regarding “Somnolency” will not be answered unless they contain an envelope properly addressed and stamped for the reply; even then no reply will be sent to letters deemed silly or unimportant; even when the above conditions are complied with, it may be several days before a reply can be sent. Don't write unless it is important. Letters are answered as a matter of courtesy. Send all communications to the Opera House. No one received in person by Miss Fay.

Programme continued on next page.

## “MATCHLESS BELL PIANOS” Take the Lead.

Used exclusively at Grand Opera House.

SANBORN & TREBILCOCK, Sole Agents for London, 183 Dundas Street.

Smoke Uneeda Cigar.

High-toned Instruments for  
Cultured People

# The MASON & BISCH PIANO

Is the acme of Musical Perfection—The Crowned  
King of Stringed Harmony.

LONDON WAREROOMS—213 Dundas Street.

## Next Attraction

THURSDAY, JANUARY 11,

Mr. Kirke La Shelle begs to announce the presentation  
of his New and Original Opera Comique

# Princess Chick

A production of unusual elaboration and elegance, embracing—  
Superb Special Scenery—Correct and Costly Garmentry, and every requisite for a  
realistic representation of the romantic locale and period of the opera—Burgundy, A. D.  
1468.

An incomparable Company of Singers, Comedians, Grand Chorus, Augmented Orchestra,  
etc., including

WINFIELD BLAKE,  
MINNIE METHOD,

EDGAR TEMPLE,  
MATHILDA PREVILLE,

W. A. LAWRENCE,  
LOUISE HEPNER.

And an Unprecedented Quartette of Comedians, Messrs. Richard Golden,  
J. C. Miron, Harry Brown, Will Mandeville, and an  
Ensemble of Eighty Persons.

For Latest Styles.....  
Nobby, Well Made Clothes,

GO TO

## FAIRBAIRN

### ...The Tailor

Opposite City Hall, Richmond St.

## Buy Your Xmas....

### Wines and Liquors

.....AT.....

## WATT & WOODWARD'S

Seventeen different brands of Scotch  
Whiskey, and a full assortment of all  
the leading brands of Wines, Brandies,  
Claret, etc., in stock.

428 RICHMOND STREET.

Trading Stamps.

Phone 415

# Palace Dancing Academy

Thoroughly Organized and Strictly Up-to-Date.

COMPETENT TEACHERS.  
LIBERAL TERMS.

DAYTON & McCORMICK

# T. CONNOR

Wholesale and Retail  
Butcher.

Stalls, 6 & 7 Covent Garden Market.

**The Original Swiss Electro-Chemical Ring**

ESTABLISHED 1878.  
None genuine without Trade-Mark in each ring. The first introduced in America. All others are imitations.

## Rheumatism

in all its various forms. **Neuralgia, Gout, Lumbago, Diabetes, Bright's Disease, Asthma** are all caused by **Uric Acid in the blood**. The Metals of which this ring is composed, in connection with the acid create an **Electro-Chemical** action, removing the acid and curing the disease.

143 Catherine St.  
San Francisco, Cal., U.S.A.

**Price \$2**  
SILVER COVERED \$3  
**GOLD COVERED \$4**

Send by mail or C.O.D. Express. For size cut hole in card that fits finger or jeweler's measure if no satisfaction after wearing 30 days.

**THE SWISS-AMERICAN RING CO.**  
EXPRESS BUILDING, 4 OPERA BLOCK.  
WINDSOR, ONT., CANADA DETROIT, MICH., U.S.A.

*The Swiss-American Ring Co. San Francisco, Cal., U.S.A. writes me that I have been wearing your Swiss Electro-Chemical Ring for nearly four months and since the first week after I put it on, have not had a trace of Rheumatism and not a sign of kidney trouble. I would not part with the ring for \$1000.00 if I could not get another very truly yours, A. G. H. H.*

*San Francisco, Cal., Sept. 17, 1901.  
I suffered with Rheumatism 15 years and Diabetes for the past 5 years with indications of Bright's Disease. Expended large sums seeking a cure, but all in vain, until the 27th day I received from you your Swiss Electro-Chemical Ring. I thought that I had for one. Have been wearing the ring four months and since the first week after I put it on, have not had a trace of Rheumatism and not a sign of kidney trouble. I would not part with the ring for \$1000.00 if I could not get another very truly yours, A. G. H. H.*

Advertising is the foundation of all successful enterprises. If your advertisement was here it would be read by every visitor to this theatre.

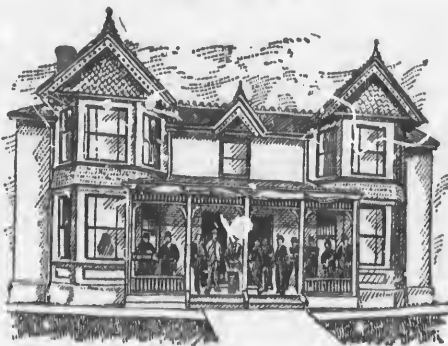
# The MONROE IMPROVED GOLD CURE

Established 1892.



NO BAD  
AFTER  
EFFECTS.

Safe and Reliable  
Treatment for  
the Cure of



Alcohol,  
Morphine,  
Cocaine and  
Tobacco Habits



Send for Pamphlet. **H. J. McKAY, Prop.,**

P. O. BOX 446—Tel. 175.

**WINDSOR, ONT.**

46-48 Pitt St. W.

