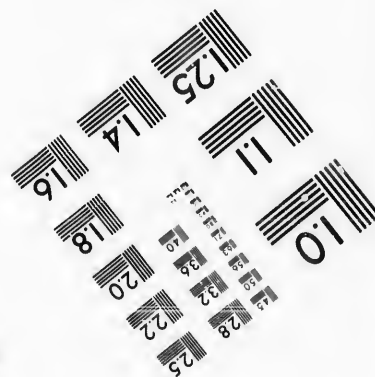
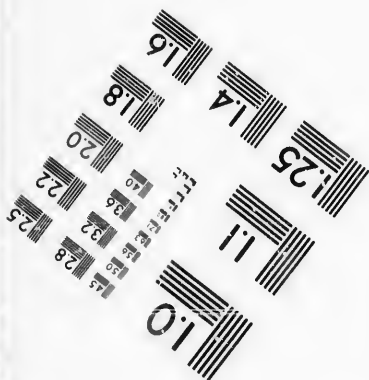
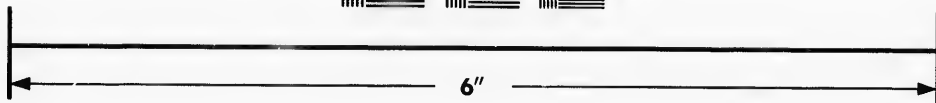
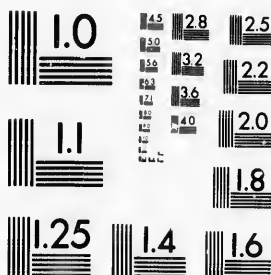


**IMAGE EVALUATION
TEST TARGET (MT-3)**



**Photographic
Sciences
Corporation**

23 WEST MAIN STREET
WEBSTER, N.Y. 14580
(716) 872-4503



**CIHM/ICMH
Microfiche
Series.**

**CIHM/ICMH
Collection de
microfiches.**



Canadian Institute for Historical Microreproductions / Institut canadien de microreproductions historiques



© 1987

Technical and Bibliographic Notes/Notes techniques et bibliographiques

The Institute has attempted to obtain the best original copy available for filming. Features of this copy which may be bibliographically unique, which may alter any of the images in the reproduction, or which may significantly change the usual method of filming, are checked below.

L'Institut a microfilmé le meilleur exemplaire qu'il lui a été possible de se procurer. Les détails de cet exemplaire qui sont peut-être uniques du point de vue bibliographique, qui peuvent modifier une image reproduite, ou qui peuvent exiger une modification dans la méthode normale de filmage sont indiqués ci-dessous.

- Coloured covers/
Couverture de couleur
- Covers damaged/
Couverture endommagée
- Covers restored and/or laminated/
Couverture restaurée et/ou pelliculée
- Cover title missing/
Le titre de couverture manque
- Coloured maps/
Cartes géographiques en couleur
- Coloured ink (i.e. other than blue or black)/
Encre de couleur (i.e. autre que bleue ou noire)
- Coloured plates and/or illustrations/
Planches et/ou illustrations en couleur
- Bound with other material/
Relié avec d'autres documents
- Tight binding may cause shadows or distortion along interior margin/
La reliure serrée peut causer de l'ombre ou de la distorsion le long de la marge intérieure
- Blank leaves added during restoration may appear within the text. Whenever possible, these have been omitted from filming/
Il se peut que certaines pages blanches ajoutées lors d'une restauration apparaissent dans le texte, mais, lorsque cela était possible, ces pages n'ont pas été filmées.
- Additional comments:/
Commentaires supplémentaires:

- Coloured pages/
Pages de couleur
- Pages damaged/
Pages endommagées
- Pages restored and/or laminated/
Pages restaurées et/ou pelliculées
- Pages discoloured, stained or foxed/
Pages décolorées, tachetées ou piquées
- Pages detached/
Pages détachées
- Showthrough/
Transparence
- Quality of print varies/
Qualité inégale de l'impression
- Includes supplementary material/
Comprend du matériel supplémentaire
- Only edition available/
Seule édition disponible
- Pages wholly or partially obscured by errata slips, tissues, etc., have been refilmed to ensure the best possible image/
Les pages totalement ou partiellement obscurcies par un feuillet d'errata, une pelure, etc., ont été filmées à nouveau de façon à obtenir la meilleure image possible.

This item is filmed at the reduction ratio checked below/
Ce document est filmé au taux de réduction indiqué ci-dessous.

10X	12X	14X	16X	18X	20X	22X	24X	26X	28X	30X	32X
					✓						

The copy filmed here has been reproduced thanks to the generosity of:

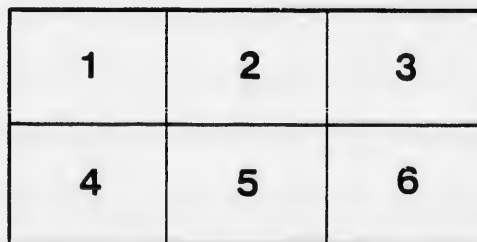
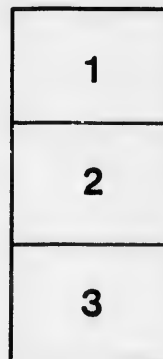
D. B. Weldon Library
University of Western Ontario
(Regional History Room)

The images appearing here are the best quality possible considering the condition and legibility of the original copy and in keeping with the filming contract specifications.

Original copies in printed paper covers are filmed beginning with the front cover and ending on the last page with a printed or illustrated impression, or the back cover when appropriate. All other original copies are filmed beginning on the first page with a printed or illustrated impression, and ending on the last page with a printed or illustrated impression.

The last recorded frame on each microfiche shall contain the symbol \rightarrow (meaning "CONTINUED"), or the symbol ∇ (meaning "END"), whichever applies.

Maps, plates, charts, etc., may be filmed at different reduction ratios. Those too large to be entirely included in one exposure are filmed beginning in the upper left hand corner, left to right and top to bottom, as many frames as required. The following diagrams illustrate the method:



L'exemplaire filmé fut reproduit grâce à la générosité de:

D. B. Weldon Library
University of Western Ontario
(Regional History Room)

Les images suivantes ont été reproduites avec le plus grand soin, compte tenu de la condition et de la netteté de l'exemplaire filmé, et en conformité avec les conditions du contrat de filmage.

Les exemplaires originaux dont la couverture en papier est imprimée sont filmés en commençant par le premier plat et en terminant soit par la dernière page qui comporte une empreinte d'impression ou d'illustration, soit par le second plat, selon le cas. Tous les autres exemplaires originaux sont filmés en commençant par la première page qui comporte une empreinte d'impression ou d'illustration et en terminant par la dernière page qui comporte une telle empreinte.

Un des symboles suivants apparaîtra sur la dernière image de chaque microfiche, selon le cas: le symbole \rightarrow signifie "A SUIVRE", le symbole ∇ signifie "FIN".

Les cartes, planches, tableaux, etc., peuvent être filmés à des taux de réduction différents. Lorsque le document est trop grand pour être reproduit en un seul cliché, il est filmé à partir de l'angle supérieur gauche, de gauche à droite, et de haut en bas, en prenant le nombre d'images nécessaire. Les diagrammes suivants illustrent la méthode.

LIST OF VOTERS,

*21 26 Feb 1875
not 2 others
written for 1 month*

Furnish List of the Name

—FOR THE—

TOWNSHIP OF ERERID,

—FOR THE—

YEAR 1876.

*Filed August 14th 1876
H. S. Lusk
Deputy Clerk of the Peace*

STRATHROY :

PRINTED AT THE "DISPATCH" BOOK AND JOB PRINTING HOUSE.

Handwritten text, possibly a date or reference number, located in the upper left quadrant of the page.

Handwritten text, possibly a name or title, located in the upper right quadrant of the page.

LIST OF VOTERS,

—FOR THE—

TOWNSHIP OF ERERID,

—FOR THE—

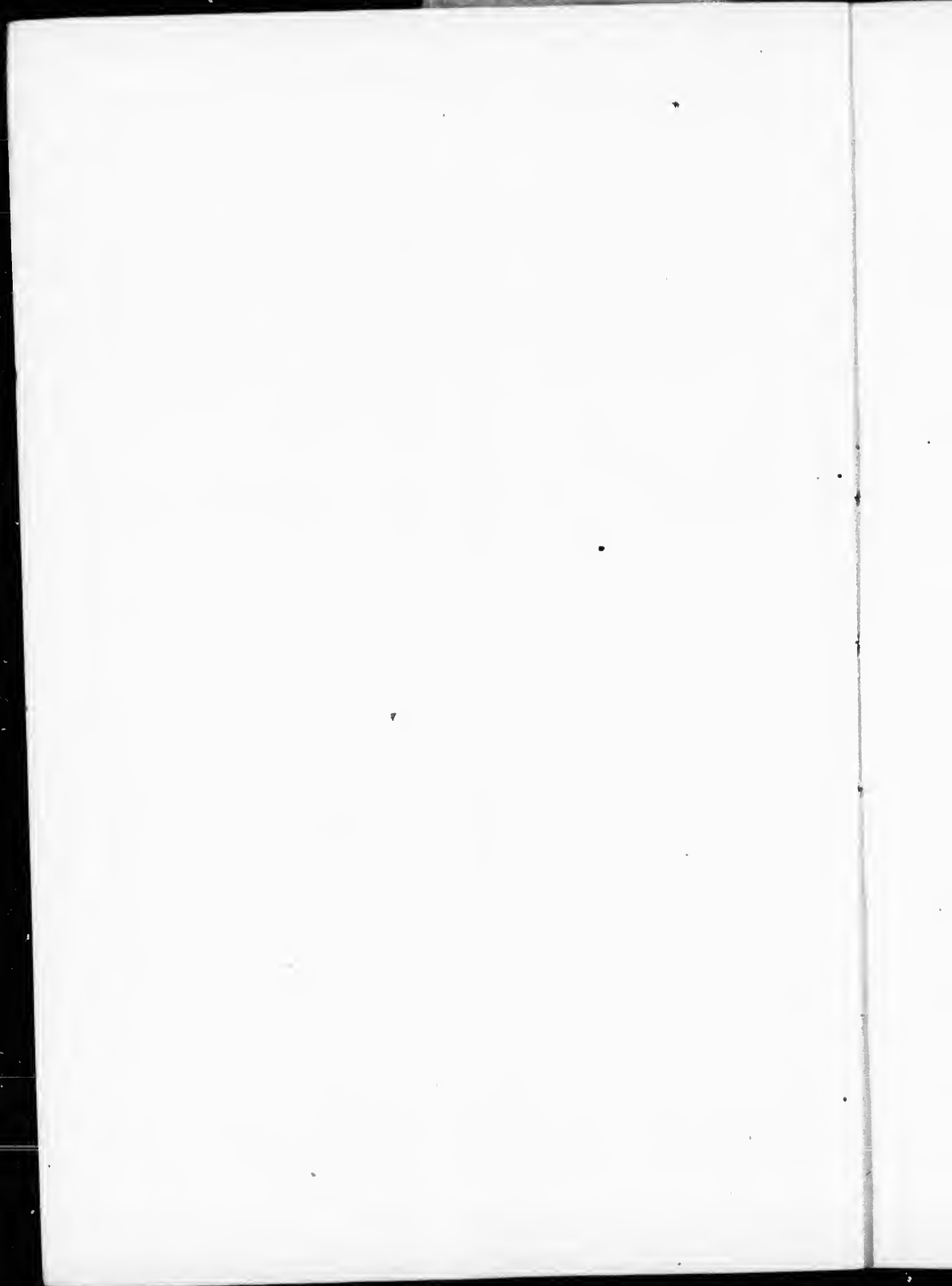
YEAR 1876.



STRATHROY:

PRINTED AT THE "DISPATCH" BOOK AND JOB PRINTING HOUSE.

1876.



FIRST ELECTORAL DIVISION.

Consecutive.	No. on Assessment Roll.	NAME.	Concession.	No of Lot or Part Lot.	Other Description.
1	4	Anderson, Donald.....	1 R N	S part N half 1.....	F
2	113	Awksworth, William.....	2 do	W half of N half 7.....	F
3	585	Alexander, James.....	3 R S	N half 1.....	F
4	648	Annett, Noah.....	4 do	S half of N half 4.....	F
5	474	Barkholder, Allan.....	1 R S	S half & part N half 1.....	T
6	11	Begg, James G.....	1 R N	W part S half 1.....	F
7	477	Beaumont, Robert.....	1 R S	N part N half 1.....	F
8	602	Brodie, Murdoch.....	3 do	N half 8.....	F
9	646	Brodie, James.....	4 do	E half of S half 4.....	F
10	687	Burris, William.....	5 do	S half 1.....	F
11	25	Campbell, Angus.....	1 R N	S half 7.....	F
12	487	Campbell, John E.....	1 R S	W half 7.....	F
13	586	Campbell, John D.....	3 do	S half 1.....	F
14	587	Campbell, John R.....	3 do	W half 2.....	F
15	588	Campbell, Duncan.....	3 do	E half 2.....	F
16	653	Campbell, Malcolm.....	4 do	6.....	F
17	713	Campbell, Donald.....	7 do	N part 1.....	F
18	719	Campbell, Robert H.....	7 do	2 and 3.....	T
19	720	Campbell, Humphrey.....	7 do	2 and 3.....	F
20	3	Carter, Amos.....	1 R N	N pt N $\frac{1}{2}$ 1 & E $\frac{1}{2}$ N $\frac{1}{2}$ 2.....	F
21	1	Clark, Alexander.....	1 R N	Part S half 1.....	F
22	2	Clark, James.....	1 R N		F
23	530	Clark, Adam.....	2 R S	N half 1.....	F
24	5	Cornell, Christopher.....	1 R N	Sub-lots 11 & 12 pt S $\frac{1}{2}$ 1.....	F
25	8	Cornell, J. D.....	1 R N	Part S $\frac{1}{2}$ 1 & E $\frac{1}{2}$ 4.....	F
26	9	Cornell, C. J.....	1 R N		F
27	481	Cornell, John M.....	1 R S	2.....	F
28	641	Cornell, Nicholas A.....	4 do	Part S half 1.....	F
29	642	Cornell, Gideon.....	5 do	3 and 4.....	F
30	643	Cornell, Gideon G.....	4 do	S half 2.....	T
31	31	Cowan, William.....	1 R N	E half of S half 8.....	F
32	491 $\frac{1}{2}$ or 116	Cowan David.....	1 R S	N half 8.....	F
33	491	Dalton, John.....	1 R S	NW pt N $\frac{1}{2}$ 8 & 1 c. SE pts S $\frac{1}{2}$ 7	F
34	21	Douglas, Crawford.....	1 R N	N half 4.....	F
35	104	Douglas, Alexander.....	2 do	S part 2.....	F
36	28	Dundou, John.....	1 do	W part S half 8.....	F
37	108	Faireloth, George.....	2 R N	N part 5.....	F
38	110	Ferguson, Charles L.....	2 do	6.....	F
39	20	Fisher, William.....	1 do	S half & W half of N half 3	F
40	598	Fletcher, Donald.....	3 R S	N half 6.....	F
41	599	Fletcher, John C.....	3 do	S halves 6 and 7.....	F
42	656	Fletcher, John.....	4 do	S half 8.....	F

List of Voters for the Township of Ekfrid, Division No. 1.

Consecutive.	No. on Assessment Roll.	NAME.	Concession.	No. of Lot or Part Lot.	Other Description.
43	645	Gentleman, James.....	4 R S	S half 3.....	F
44	654	Gentleman, David.....	do	N part 7.....	F
45	111	Gibbs, Isaac.....	2 R N	E half of N half 7.....	F
46	10	Gordon, Thomas.....	1 do	Part S half 1.....	F
47	604	Gowanlock, James.....	3 R S	S half 8.....	F
48	101	Griffith, Eli.....	2 R N	Centre and S W part 1.....	F
49	601	Graham, John.....	3 R S	N half 7.....	F
50	39	Hamilton, Alexander.....	1 R S	N E corner E half 7.....	T
51	22	Harc, Thomas.....	1 R N	N half 5.....	T
52	480	Harrison, John.....	1 R S	N half & E half S half 2.....	T
53	489	Hardy, Robert.....	1 do	S part S half 8.....	F
54	490	Hardy, Francis.....	2 do	S.....	F
55	547	Hardy, Thomas.....	2 do	S $\frac{1}{2}$ of S $\frac{1}{2}$ & centre part	T
56	685	Harvey, William.....	5 do	N half 1.....	F
57	17	Hiscock, James.....	1 R N	E part N $\frac{1}{2}$ 3 & W $\frac{1}{2}$ N $\frac{1}{2}$ 2	T
58	103	Howe, James.....	2 do	N half 2.....	F
59	107	Howe, Timothy.....	2 do	4.....	F
60	640	Homister, Frederick.....	4 R S	S E corner S half 1.....	F
61	114	Huston, John.....	2 R N	N half 8.....	T
62	483	Hyndman, Gilbert.....	1 R S	2 halves 4 and 5.....	F
63	15	Ibbittson, Henry.....	1 R N	S half 2.....	T
64	542	Johnson, Archibald.....	2 R S	S half 6.....	F
65	690	Lethbridge, Thomas.....	5 R S	S parts 7 and 6.....	F
66	23	Lockwood, James.....	1 R N	6.....	F
67	699	Lockwood, Benjamin.....	6 R S	Part N half 1.....	F
68	649	Lucas, John.....	4 do	W half of S half 4.....	F
69	710	Lucas, William.....	6 do	S part 3.....	F
70	711	Lucas, Charles.....	6 do	N part 3.....	F
71	545	Mathers, William.....	2 R S	S half of N half 7.....	F
72	546	Mathers, Henry.....	2 do	S half 7.....	F
73	18	Middlemiss, Ralph.....	1 R N	E pt N $\frac{1}{2}$ 3 & W $\frac{1}{2}$ N $\frac{1}{2}$ 2.....	F
74	695	Middlemiss, George.....	6 R S	1 and 2.....	F
75	24	Marrison, Murdoch.....	1 R N	N half 7.....	T
76	543	Musgrove, James.....	2 R S	N half N half 7.....	T
77	691	Murray, Dugald.....	5 do	N half 8.....	F
78	538	McDougall, Alexander Jr.....	2 R S	N half S half 4.....	F
79	539	McDougall, Daniel.....	2 do	S part of S half 4.....	F
80	540	McDougall, Alexander Sr.....	2 do	S part 5.....	F
81	541	McDougall, Archibald.....	2 do	N part 5.....	F
82	592	McDougall, Archibald.....	3 R S	N half 4.....	T
83	593	McDougall, Alexander.....	3 R S	S half 4.....	F
84	594	McDougall, John A.....	3 R S	S part 1.....	F
85	718	McDougall, James.....	7 do	W half 2.....	F
86	532	McFarlane, James.....	2 do	E half 2.....	F
87	533	McFarlane, Malcolm.....	2 do	S half 1.....	F
88	531	McGugan, Donald.....	2 do	S half 1.....	F
89	589	McGugan, Archibald.....	3 R S	S half 3.....	T
90	590	McGugan, Malcolm.....	3 R S	S half 3.....	T
91	614	McGugan, John.....	4 R S	N half 2.....	F

List of Voters for the Township of Ekfrid, Division No. 1.

Consecutive	No. on Assessment Roll	NAME.	Concession.	No. of Lot or Part Lot.	Other Description.
	92	596 McLachlan, Angus.....	3 R S	N half 5.....	F
	93	652 McLachlan, Archibald.....	4 do	S half 5.....	F
	94	471 McLellan, Nanthaniel.....	1 do	Part N half 1.....	F
	95	485 McLean, Alexander.....	1 do	W part of 6.....	F
	96	486 McLean, Gilbert.....	1 do	E part of 6.....	F
	97	534 McLean, Malcolm.....	2 do	S half 3.....	F
	98	535 McLean, Allan.....	3 do	N half 3.....	T
	99	651 McLean, Donald.....	4 do	N half 5.....	F
	100	106 McNeil, John.....	2 R N	3.....	F
	101	109 McNeil, Alexander.....	2 do	S part 5.....	F
	102	482 McRae, Duncan.....	1 R S	S half 4.....	F
	103	537 McRae, Donald.....	2 do	W half of N half 3.....	F
	104	39 Richardson, L. R.....	1 R N	W pt S $\frac{1}{2}$ S cheese factory.....	T
	105	688 Richards, George.....	5 R S	S half 2.....	F
	106	16 Scott, John.....	1 R N	S half 2.....	F
	107	639 Scott, John A.....	4 R S	N half 1.....	F
	108	14 Sinclair, Donald A.....	1 R N	Sub-lot 9 part N half 1.....	F
	109	484 Stevenson, Allen.....	1 R S	S half 5.....	F
	110	597 Stewart, Charles.....	3 do	S half 5.....	F
	111	647 Stewart, Peter.....	4 do	N half of N half 4.....	F
	112	19 Trowhill, Samuel.....	1 R N	S $\frac{1}{2}$ & W $\frac{1}{2}$ of N $\frac{1}{2}$ 3.....	T
	113	478 Tryte, George.....	1 R S	N E corner N half 1.....	F
	114	595 Urquhart, Duncan.....	3 R S	N half 5.....	T
	115	659 Urquhart, William.....	5 do	N E part 7 & N part 6.....	F
	116	99 Wellman, James L.....	2 R N	E part S half 1.....	F
	117	100 Wilkinson, Robert.....	2 do	Centre part 1.....	T

I, Donald McFarlane, Clerk of the Municipality of the Township of Ekfrid in the County of Middlesex, and Province of Ontario, make oath and say, that according to the best of my information, knowledge and belief, the foregoing is a correct list of all the assessed qualified electors in the First Electoral Division of the Township of Ekfrid, entitled to vote at the Election of Members to serve in the Legislative Assembly of the Province of Ontario, taken from the revised Assessment Roll of the said Township of Ekfrid of the year 1876, according to the Acts of Parliament in that behalf.

DONALD McFARLANE,

Clerk, Township of Ekfrid.

Sworn before me this 19th day of June, A. D. 1876.

L. CLEVERDON, J. P.

I hereby certify that a copy of the foregoing list was first posted up in my Office on Monday, the 3rd day of July, A. D. 1876, and all electors are hereby requested to examine said list, and if any omissions or errors are perceived therein, to take immediate proceedings to have the said errors corrected according to law.

DONALD McFARLANE,

Clerk, Township of Ekfrid.

SECOND ELECTORAL DIVISION.

Consecutive.	No. on Assessment Roll.	NAME.	Concession.	No. of Lot or Part Lot.	Other Description.
1	612	Adams, John.....	3 R S	N half 12.....	T
2	607	Andrews, Garrick.....	3 do	S half 9.....	F
3	608	Andrews, James.....	3 do	S half 10.....	F
4	659	Ansley, William.....	4 do	S half of N half 9.....	H
5	660	Ansley, James.....	4 do	S part of S half 9.....	H
6	614	Berdan, Arthur S.....	3 R S	S half 12.....	F
7	672	Berdan, Samuel.....	4 do	15.....	F
8	129	Black, Alexander J.....	2 R N	N half 13.....	F
9	53	Black, Donald.....	2 R S	N half 11.....	F
10	505	Boddy, William.....	1 do	Centre parts S halves 14 & 15	T
11	25	Campbell, Angus.....	2 R N	S W part N half 14.....	F
12	33	Campbell, Cameron J.....	1 do	S half & E half of N half 9.....	F
13	120	Campbell, William.....	2 do	W half of N half 10.....	F
14	121	Campbell, Duncan S.....	2 do	E half of N half 10.....	F
15	563	Campbell, Alexander B.....	4 R S	S part 14.....	F
16	605	Campbell, Alexander.....	3 do	S half of N half 9.....	F
17	8	Cornell J. D.....	1 R S	Centre part N half 14.....	F
18	9	Cornell, C. J.....			
19	44	Cornell, Philip Jr.....	1 R N	S $\frac{1}{2}$ 12 and 1st R S, S $\frac{1}{2}$ 11.....	T
20	47	Cornell, Philip Sr.....	1 do	S $\frac{1}{2}$ 12 and 1st R S, S $\frac{1}{2}$ 11.....	F
21	499	Cornell, John P.....	1 R S	E part S half 12.....	F
22	118	Congdon, John.....	2 R N	W half of N half 9.....	F
23	119	Congdon, Richard.....	2 do	E half of N half 9.....	F
24	554	Dalton, Dukes.....	2 R S	W half N half 10.....	F
25	23	Dandon, John.....	2 do	E half N half 10.....	F
26	550	Duncanson, Donald.....	2 do	W half S half 9.....	F
27	552	Duncanson, Donald.....	2 do	S half 10.....	F
28	554	Duncanson, Alexander.....	2 do	S half 11.....	F
29	37	Elliott, George C.....	1 R N	E half S half 11.....	F
30	38	Elliott, Francis.....	1 do	W half S half 11.....	F
31	48	Galbraith, Malcolm.....	1 R N	S half 13.....	F
32	620	Grant, Marcus.....	3 R S	S half 15.....	F
33	621	Grant, Robert.....			
34	40	Hamilton, Thomas.....	1 R N	N half 11.....	F
35	556	Hare, Isaiah.....	2 R S	W corner N E part N half 12	T
36	733	Huston, Henry.....	2 R N	N half 15.....	T
37	61	Huston, George.....	2 do	N half 15.....	F
38	622	Hyndman, Neil.....	3 R S	16.....	F
39	495	Kershaw, Charles.....	1 R S	N half 19 and S half 10.....	T
40	560	Law, Frederick.....	2 R S	N halves 14 and 15.....	T
41	497	Lee, James E.....	1 do	W half of N half 11.....	F
42	498	Lee, George.....	1 do	E half of N half 11.....	F
43	565	Mathers, Abram.....	4 R S	11 & 3rd R S, E $\frac{1}{2}$ of S $\frac{1}{2}$ 11.....	F

List of Voters for the Township of Ekfrid, Division No. 2.

Other Description.

Consecutive.	No. on Assessor's Taxable Roll	NAME.	Concession.	No. of Lot or Part Lot	Other Description.
44	561	May, James	2 R S	16	F
45	495	Miller, Joseph	1 do	N half 10	F
46	53	Mitchell, Duncan	1 R N	W half of S half 14	F
47	559	Murray, James	2 R S	S halves 14 and 15	F
48	658	Mullins, Charles	4 do	N part N half 9	F
49	692	Mullins, Henry	5 do	N part 9	F
50	50	McAlpine, Hugh	1 R N	E half of S half 14	F
51	54	McAlpine, Peter	1 do	W half 15	F
52	55	McAlpine, James	1 do	E half 15	F
53	56	McAlpine, Hugh Jr.	1 do	W half 16	T
54	57	McAlpine, Hugh Sr.	1 do	16	F
55	58	McAlpine, Alexander	1 do	E half 16	T
56	57	McAlpine, James J.	3 do	15 and 16	F
57	507	McAlpine, Duncan	1 R S	N half 15	T
58	508	McAlpine, Malcolm	1 do	N half 15	F
59	558	McAlpine, Donald	2 do	N part 13	T
60	506 1/2	McCallum, John	1 do	S parts of S half 14 and 15	F
61	611	McCallum, Alexander	3 do	W half S half 11	T
62	666	McCallum, Neil	4 do	12	T
63	667	McCallum, John	4 do	12	F
64	49	McColl, Samuel	1 R N	N half 13	F
65	504	McColl, John D.	1 R S	W half 13 & E part N half 14	F
66	36	McDonald, David	1 R N	N half 10	F
67	127	McDonald, Alexander S.	2 do	N half 12	F
68	613	McDonald, John	3 R S	N half 12	F
69	615	McDonald, Donald	3 do	N half 13	F
70	616	McDonald, Archibald	3 do	S half 13	F
71	35	McIntaggart, Angus	1 R N	S half 10	F
72	122	McIntaggart, Angus (Teacher)	2 do	S half 11	F
73	43	McIntaggart, Lachlan	1 do	N half 12	F
74	128	McIntaggart, John	2 do	S half 13	T
75	131	McKay, David	2 do	Ne N 1/4 14 & 1ste SW pt S 1/4 13	T
76	694	McKellar, Alexander J.	5 R S	10	T
77	661	McLachlan, Daniel	4 do	E half 10	T
78	662	McLachlan, Lachlan	4 do	10	F
79	663	McLachlan, Lachlan Jr.	4 do	W half 10	T
80	502	McLean, John	1 do	S half 13	T
81	503	McLean, Donald	1 do	S half 13	F
82	748	McLean, John	2 do	N half 9	F
83	609	McLean, Duncan	3 do	N half 10	F
84	617	McLean, Angus	3 do	N half 14	T
85	618	McLean, Samuel	3 do	N half 15	T
86	562	McRae, John R.	2 do	16	F
87	555	Patterson, Rodger	2 R S	S half 12	F
88	557	Patterson, Peter	2 do	S part 13	F
89	664	Roberts, John	4 R S	11 & 3rd R S E 1/2 of S 1/2 11	T
90	123	Seates, George	2 R N	N half 11	F
91	45	Smith, George	1 do	S 1/2 12 & 1st R S, S 1/2 11	T
92	4	Smith, Philip C.	1 do	S 1/2 12 & 1st R S, S 1/2 11	T
93	32	Sutherland, Robert	1 R S	S half 9	F
94	494	Switzer, John	1 do	N half 9 & S half 10	F

List of Voters for the Township of Ekfrid, Division No. 3.

Consecutive.	No on Assessment Roll.	NAME.	Concession.	No. of Lot or Part Lot.	Other Description.
95	51	Thomson, Andrew	1 R N	N half 14.....	F
96	637	Tiffin, Samuel.....	4 R S	N part S $\frac{1}{2}$ & N part N $\frac{1}{2}$ 9..	T
97	668	Wiley, Lott Jr.....	4 R S	E part 13.....	T
98	669	Wiley, Lott Sr.....	4 do	E part 13.....	F
99	670	Wiley, David J.....	4 do	W part 13.....	T
100	671	Wiley, David.....	4 do	W part 13.....	F
101	130	Young, Henry.....	2 R N	S half 14.....	F
102	134	Young, Jacob.....	2 do	S half 15.....	F
103	135	Young, George.....	2 do	N part 16.....	F
104	549	Yates, Thomas.....	2 R S	E $\frac{1}{2}$ S $\frac{1}{2}$ 9 & 3 R S, N pt N $\frac{1}{2}$ 9	F

I, Donald McFarlane, Clerk of the Municipality of the Township of Ekfrid in the County of Middlesex, and Province of Ontario, make oath and say, that according to the best of my information, knowledge and belief, the foregoing is a correct list of all the assessed and qualified electors in the Second Electoral Division of the Township of Ekfrid, entitled to vote at the election of Members to serve in the Legislative Assembly of the Province of Ontario, taken from the revised Assessment Roll of the said Township of Ekfrid of the year 1876, according to the Acts of Parliament in that behalf.

DONALD MCFARLANE,

Clerk, Township of Ekfrid.

Sworn before me this 19th day of June, A. D. 1876.

L. CLEVERDON, J. P.

I hereby certify that a copy of the foregoing list was first posted up in my Office on Monday, the 3rd day of July, A. D. 1876, and all electors are hereby requested to examine the said list, and if any omissions or errors are perceived therein, to take immediate proceedings to have the said omissions or errors corrected according to law.

DONALD MCFARLANE,

Clerk, Township of Ekfrid.

THIRD ELECTORAL DIVISION.

1	682	Allen, John	4 R S	N half 24.....	F
2	683	Allen, George.....	4 do	S part 24.....	T
3	684	Allen, James.....	4 do	S part 24.....	F
4	83	Bartlett, Isaac	1 R N	E part N half 24.....	F
5	82	Beckton, Thomas	1 do	S half 24.....	F
6	624	Berdan, David	3 R S	Centre part 17.....	F
7	625	Berdan, George A.....	3 do	Centre part 18.....	T
8	605	Campbell, Alexander	1 R S	E part N half 17	T
9	76	Conthard, George J.....	1 R N	Ce tre part of S half 23...	F
10	77	Coulthard, John B.....			
11	578	Conthard, Thomas B.....	2 R S	N half 22.....	T
12	578 $\frac{1}{2}$	Coulthard, Andrew	2 do	N half 22.....	F
13	520	Clark, Samuel F.....	1 do	S half 22.....	F
14	521	Clark, George.....	1 do	N half 22.....	F
15	88	Cornici, George.....	Gore	17 and 18.....	F
16	577	Coad, Richard.....	2 R S	S half 22.....	F

List of Voters for the Township of Ekfrid, Division No. 3.

Consecutive.	No. on Assessment Roll.	NAME.	Concession.	No of Lot or Part Lot.	Other Description.
17	638	Dobie, John A	3 R S	N half 24	
18	677	Dobie, James D.....	4 do	S parts 22 and 23.....	F
19	679	Dobie, William	4 do	S parts 22 and 23.....	T
20	681	Dobie, David.....	4 do	E part 22.....	F
21	518	Duncanson, Peter.....	1 do	S half 21.....	F
22	91	Goff, Richard.....	Gore	21	F
23	92	Goff, John.....	Gore	N E cor. 22 and W cor. 22.....	F
24	138	Grogan, George.....	2 R N	S half 18.....	F
25	148	Graham, John Jr.....	2 do	E half of S half 22.....	F
26	149	Graham, John Sr.....	2 do	E half of S half 22.....	T
27	675	Graham, Duncan.....	4 R S	17 and 18.....	F
28	680	Graham, Donald.....	4 do	N parts 22 and 23.....	F
29	528	Graves, George W.....	1 do	Part N half 24.....	T
30	512	Harris, James.....	1 R S	W part N half 17.....	F
31	59	Huston, George.....	1 R N	S half 17.....	T
32	60	Huston, Samuel G.....			
33	61	Huston, Georg.....	1 R N	17.....	F
34	513	Hogg, George.....	1 R S	N half 18.....	T
35	567 1/2	Hyndman, Gilbert.....	2 do	N halves 17 and 18.....	F
36	622	Hyndman, Neil.....	1 do	E half S half 18.....	F
37	95	Kelley, Charles R.....	Gore	24.....	T
38	96	Kelley, Robert.....	Gore	24.....	F
39	570	Kelley, Charles.....	2 R S	W half S half 19.....	T
40	571	Kelley, Horace.....	2 do	W half S half 19.....	F
41	584	Kelley, David.....	2 do	N half 24.....	F
42	573	Lethbridge, W. G.....	2 R S	S half 20.....	T
43	623	Lethbridge, George.....	3 do	N half 17.....	F
44	626	Lethbridge, John.....	3 do	N half 19.....	F
45	72	Lockwood, Wallace.....	1 R N	S half 21.....	F
46	65	Milley, James.....	1 R N	S half 19.....	F
47	66	McAlpine, Malcolm.....	1 R N	N half 19.....	T
48	67	McAlpine, Doanld.....			
49	68	McAlpine, Duncan.....	1 R N	N half 19.....	F
50	136	McAlpine, Donald.....	2 do	N half 17.....	F
51	565	McAlpine, Hugh.....	2 R S	S half 17.....	T
52	69	McBean, Alexander.....	1 R N	S half 20.....	F
53	523	McBean, William.....	1 R S	W half N half 23.....	F
54	524	McBean, Alexander Jr.....	1 do	E half N half 23.....	F
55	154	McCallum, Edward.....	2 R N	E half N half 23.....	T
56	155	McCallum, Gilbert.....	2 do	E brif of N half 23.....	F
57	157	McCallum, Peter.....	2 do	W half of N half 23.....	F
58	137	McCull, John S.....	2 do	S half 17.....	F
59	511	McCull, John.....	1 R S	W half of S half 18.....	F
60	515	McCull, Alexander.....	1 do	S half 19.....	F
61	70	McDonald, John.....	1 R N	N half 20.....	F
62	145	McEachern, David.....	2 do	20.....	F
63	159	McEachern, Hector.....	2 do	W half of S half 22.....	F
64	152	McEachern, Donald.....	2 do	S half 23.....	F
65	519	McEachern, Archibald.....	1 R S	N part 20.....	F

Other Description.

F
T
T
F
T
F
F
F
F

in the
g to the
all the
of Ek
mbly of
nship of

Ekfrid.

Office on
d to ex
mediate

Ekfrid.

F
T
F
F
F
T
F
F
F
F
F

Consecutive.	No. on Assessment Roll.	NAME.	Concession.	No. of Lot or Part Lot.	Other Description.
66	572	McEachren, Duncan.....	2 R S	W ½ of N ¼ 20 & 1 R S, S p 20	F
67	582	McIntyre, Malcolm	2 do	N half of S half 24.....	F
68	583	McIntyre, Archibald.....	2 do	S half of S half 24.....	F
69	74	McKenzie, James C	1 R N	E half S half 22	F
70	75	McKenzie, William.....	1 do	W half S half 22	F
71	576	McKenzie, Alexander R	2 R S	S half 21.....	F
72	581	McKenzie, John	2 do	N half 23	F
73	89	McKellar, Archibald.....	Gore	19	F
74	90	McKellar, John.....	Gore	20 & 2 R N parts 21	F
75	146	McKellar, Alexander.....	2 R N	N part 21.....	F
76	567	McKellar, John.....	2 R S	N halves 17 & 18	T
77	575	McLean, Donald.....	2 do	N half 21	F
78	81	McRae, James	1 R N	N half 22.....	F
79	522	McRae, Christopher.....	1 R S	S half 23	F
80	527	McRae, Hugh.....	1 do	N W corner N half 24.....	F
81	579	McRae, Philip.....	} 2 R S	S half 23	F
82	580	McRae, John.....			
83	636	McRae, Donald.....	3 R S	S half 22.....	F
84	637	McRae, Kenneth	3 do	23	F
85	637½	McRae, Donald.....	3 do	23.....	T
86	676	Pool, Christopher.....	4 R S	19 & 3 R S, S ½ 19	F
87	629	Searle, John P	3 R S	S ½ of S ¼ 20 & 4 R S, 20 ..	F
88	64	Sinclair, John.....	1 R N	N half 18.....	F
89	71	Sinclair, Richard.....	1 do	N half 20.....	T
90	158	Siddall, William.....	2 do	E half of S half 24.....	F
91	159	Siddall, Joseph.....	2 do	W half of S half 24	F
92	85	Steinhoff, Jacob.....	1 do	W part N half 24	F
93	151	Strachan, Thomas.....	2 do	N half 22	F
94	73	Sutherland, W. R.....	1 do	N part 21.....	F
95	139	Sutherland, W. Robb.....	2 do	N half 18	T
96	140	Sutherland, William.....	2 do	N half 18.....	F
97	142	Squire, John.....	2 do	W half of N half 19.....	T
98	143	Squire, E. H.....	2 do	N half 19	F
99	14	Squire, Samuel C.....	2 do	E half of N half 19.....	T
100	568	Squire, E. W	2 R S	N half 19	F
101	569	Squire, J. R	2 do	N half 19.....	F
102	627	Squire, E. L.....	3 do	N half of S half 20	F
103	628	Squire, Henry	3 do	S half of N half 20.....	F
104	80	Taylor, Duncan	1 R N	N half 23.....	F
105	630	Tait, William.....	3 R S	N half 21.....	F
106	632	Tait, James	3 do	W half of S half 21.....	F
107	633	Tait, George	3 do	W ½ of S ¼ 21 & 4 R S 21..	T
108	86	Thomson, John	2 R N	S half of N half 24	F
109	525	Trestain, John	1 R S	S half 24.....	F
110	634	Trestain, William.....	3 do	N half 22.....	T
111	636	Trestain, George.....	3 do	N half 22.....	F
112	141	Twiss, Robert C.....	2 R N	S half 19.....	F
113	516	Willey, Bray.....	1 R S	N half 21	T
114	517	Willey, Scott.....	1 do	N half 21.....	F

I, Donald McFarlane, Clerk of the Municipality of the Township of Ekfrid in the

List of Voters for the Township of Ekfrid, Division No. 4.

County of Middlesex, and Province of Ontario, make oath and say, that according to the best of my information, knowledge and belief, the foregoing is a correct list of all the assessed and qualified electors in the Third Electoral Division of the Township of Ekfrid, entitled to vote at the election of Members to serve in the Legislative Assembly of the Province of Ontario, taken from the revised Assessment Roll of the said Township of Ekfrid of the year 1876, according to the Acts of Parliament in that behalf.

DONALD McFARLANE,

Clerk, Township of Ekfrid.

Sworn before me this 19th day of June, A. D. 1876.

L. CLEVERDON, J. P.

I hereby certify that a copy of the foregoing list was first posted up in my Office on Monday, the 3rd day of July, A. D. 1876, and all electors are hereby requested to examine the said list, and if any omissions or errors are perceived therein, to take immediate proceedings to have the said omissions or error corrected according to law.

DONALD McFARLANE,

Clerk, Township of Ekfrid.

FOURTH ELECTORAL DIVISION.

Consecutive.	No on Assessment Roll.	NAME.	Concession.	No. of Lot or Part Lot.	Other Description.
1	450	Ash, Emanuel.....	5	S half 14.....	F
2	227	Bacou, W. J.....	1	E half of N half 15.....	F
3	256	Bates, Henry.....	2	S half 2.....	T
4	309	Bahuke, Charles.....	3	E half of N half 4.....	F
5	428	Barry, James.....	5	E half of S half 4.....	F
6	211	Black, Nichol.....	1	pn $\frac{1}{2}$ 12&alpn $\frac{1}{2}$ 12&c 20pn $\frac{1}{2}$ 13	F
7	221	Black, William.....	1	E part S half 13.....	F
8	275	Black, Donald C.....	2	S half 15.....	F
9	315	Black, George.....	3	N half 7 & 5 con N part 11.	F
10	441 $\frac{1}{2}$	Black, Alexander.....	4	N half 7.....	F
11	449	Black, Archibald.....	5	S half 14.....	T
12	438	Blackler, John.....	5	S half 9.....	T
13	252	Brown, John.....	2	E part N half 1.....	F
14	255	Brown, Joseph.....	2	E pt N $\frac{1}{2}$ 2 & W pt N $\frac{1}{2}$ 1...	F
15	379	Brown, Alfred.....	4	W half of S half 10.....	F
16	310	Butler, Robert.....	3	E half of S half 5.....	F
17	311	Butler, John.....	3	W half of S half 5.....	F
18	313	Butler, William.....	3	W half of N half 5.....	F
19	25	Campbell, Angus.....	1	S W part S half 13.....	F
20	487	Campbell, John E.....	3	E $\frac{1}{2}$ of S $\frac{1}{2}$ 6 & 1 R S, W $\frac{1}{2}$ 7	F
21	378	Cahoe, A. J.....	4	W half of N half 9.....	F
22	217	Carruthers, John.....	1	B 1, 2, 9 & 10 pt N half 13.	T
23	268	Chisholm, John.....	2	N half 12.....	F
24	382	Chisholm, Neil.....	4	W half of N half 11.....	T
25	8	Corneil, J. D.....	2	E $\frac{1}{2}$ of S $\frac{1}{2}$ 5 & 1 R N S $\frac{1}{2}$ 4.	F
26	9	Corneil, C. J.....	2	E $\frac{1}{2}$ of S $\frac{1}{2}$ 5 & 1 R N S $\frac{1}{2}$ 4.	F
27	169	Coulter, Thomas.....	1	Part N half 1.....	F
28	283	Coulthard, William S.....	3	14 and 3 con S half 19.....	T
29	78	Coulthard, Andrew.....	3	14 and 2 con S half 19.....	F
30	201	Crane, Nelson.....	1	A 7 part N half 12.....	F

Other Description.

id in the

List of Voters for the Township of Ekfrid, Division No. 4.

Consecutive.	No. on Assessment Roll.	NAME.	Concession.	No. of Lot or Part Lot	Other Description.
31	491	Dalton, John.....	1	seps $\frac{1}{2}$ 7 & 1 rs, nw p n $\frac{1}{2}$ 8	F
32	372	Davey, William H.	4	S half 7.....	F
33	427	Davis, Howard.....	4	E part of N half 4.....	F
34	433	Dell, S. W.....	5	N half 7.....	T
35	202	Dewitt, Stephen.....	1	A 6 part N half 12.....	T
36	171	Dillon, John.....	1	E & W part N half 2.....	F
37	104	Douglas, Alexander.....	3	W $\frac{1}{2}$ of S $\frac{1}{2}$ 6 & 2 R N, S pt 2	F
38	324	Dunn, John.....	3	N half 12.....	F
39	390	Eddie, William.....	4	N half 14.....	F
40	448	Ferguson, John.....	5	E half N half 14.....	F
41	384	Fletcher, John.....	4	N part 12.....	T
42	385	Fletcher, Hugh.....	4	N part 12.....	F
43	327	Foster, James.....	3	N part S half 13.....	F
44	258	Fowler, Jacob.....	2	S half of N half 3.....	T
45	306	Fowler, Peter.....	3	E half of S half 3.....	T
46	220	Fraser, Angus D.....	1	N E cor S R R, pt N $\frac{1}{2}$ 13..	T
47	48	Galbraith, Malcolm.....	4	S $\frac{1}{2}$ of S $\frac{1}{2}$ 15 & 1 R N S $\frac{1}{2}$ 13..	F
48	173	Gallahar, John.....	1	N and E part N half 3. . .	F
49	323	Gibbs, John.....	3	N half 12.....	T
50	328	Gibbs, Ellis.....	3	S part S half 13.....	F
51	445	Gough, Curtis.....	5	E half of N half 13. . . .	F
52	170	Haggarty, John.....	1	E half of S half 2.	F
53	360	Hardy, Henry.....	4	N W and N E part 2.....	T
54	366	Hardy, Josiah.....	4	W half of N half 4.....	F
55	251	Helm, John.....	2	E part N half 1.....	T
56	446	Henry, William.....	5	W half of N half 13.....	F
57	239	Hill, John E.....	2	S half of N half 3.....	F
58	392	Hill, Thomas.....	4	N part 15.....	T
59	199	Holmes, Thomas.....	1	A 2 part N half 12.....	F
60	452	Howard, Joseph.....	5	E half of S half 15.....	T
61	208	Hughes, Nathaniel.....	1	D 2 and 3 part N half 12..	F
62	274	Hyndman, Alexander.....	2	N half of W half 14.	F
63	181	Jeffrey, Wm. H.	1	N W part S half 8.	F
64	254	Jeffrey, John A.....	2	Centre part N half 2.....	F
65	185	Johnson, John.....	1	S half 9.....	F
66	413	Johnson, Archibald.	5	N half of S half 12.....	F
67	447	Kitchen, Clark.....	5	W half of N half 14.....	F
68	364	Kleinn, Philip.....	4	W part N half 3.....	F
69	355	Laughton, George.....	4	S half 1.....	F
70	421	Laughton, Samuel.....	5	N half 2.....	F
71	430	Laughton, Charles.....	5	N half 6.....	F
72	434	Laughton, Joseph.....	5	N half 7.....	F
73	387	Leith, George.....	4	N half 13.....	F
74	266	Lindsey, William.....	2	S half 9.....	F
75	178	Long, Richard.....	1	N half 7.....	T
76	377	Lotan, Joseph.....	4	E half of S half 10..	F
77	388	Lotan, Robert.....	4	S half 14.....	F

List of Voters for the Township of Ekfrid, Division No. 4.

Other Description.	Consecutive.	No. on Assessment Roll.	NAME.	Concession.	No. of Lot or Part Lot.	Other Description.
8 F	78	424	Mann, Daniel.....	5	N half 3.....	F
F	79	383	May, William.....	4	S part 12.....	F
F	80	166	Middlemiss, George.....	1	S part 1.....	F
T	81	180	Miles, Edward J.....	1	N W part S half 8.....	T
F	82	270	Morrison, Mathew.....	2	E half of N half 13.....	F
F	83	451	Moore, Peter.....	5	E half of N half 15.....	F
2 F	84	432	Morrow, Joseph.....	5	S half 7.....	F
F	85	261	Murray, Andrew.....	2	S half 3.....	F
F	86	319	Murray, Donald.....	3	S half 10.....	F
F	87	274	McAlpine, Peter M.....	2	S part 14.....	F
F	88	507	McAlpine, Duncan.....	2	E 1/2 of N 1/2 14 & 1 R S, N 1/2 15.	T
T	89	508	McAlpine, Malcolm.....	2	E 1/2 of N 1/2 14 & 1 R S, N 1/2 15.	F
F	90	177	McCallum, Duncan.....	1	S half 6.....	T
F	91	218	McCallum, John.....	1	B 1, 2, 9 & 10 part N half 13	F
T	92	326	McColl, Dugald.....	3	N half 13.....	F
T	93	224	McDonald, John.....	1	S half 14.....	T
3. T	94	36	McDonald, David.....	1	S half 14.....	F
F	95	329	McDonald, Duncan.....	3	N half 14.....	F
3. F	96	381	McDonald, Duncan C.....	4	S half 11.....	F
F	97	271	McFie, Charles.....	2	S half 13.....	T
F	98	272	McFie, James W.....	2	S half 13.....	F
F	99	323	McGill, John.....	3	S half 12.....	F
F	100	163	McIntyre, John.....	1	S part 1.....	T
F	101	164	McIntyre, Dugald.....	1	S part 1.....	T
F	102	163	McIntyre, Malcolm.....	1	S part 1.....	T
T	103	192	McIntyre, Malcolm.....	1	A 3 part N half 12.....	F
F	104	212	McIntyre, Malcolm B.....	1	N E corner N half 13.....	F
F	105	267	McIntyre, John.....	2	N half 10.....	F
F	106	318	McIntyre, Archibald.....	3	S halves 8 and 9.....	F
F	107	442	McIntyre, Solomon.....	5	W 1/2 of S 1/2 and pt N 1/2 11.	F
F	108	191	McIntaggart, Donald.....	1	S half 12.....	T
F	109	43	McIntaggart, Lachlan.....	1	S half 12.....	F
F	110	131	McKay, David.....	1	S W part S half 13.....	T
F	111	288	McKay, William.....	3	S half 4.....	F
F	112	194	McKenzie, Angus.....	1	A 4 part N half 12.....	F
F	113	357	McKee, David.....	4	E part N half 1.....	F
F	114	222	McLean, Hugh.....	1	N half 14.....	F
F	115	286	McLean, Allan.....	1	B 2, 6, 7 & 8 p N 1/2 12 & 2c. S 1/2 21	F
F	116	190	McMaster, Alexander.....	1	N half 11.....	F
F	117	316	McMaster, Alexander.....	3	N half 8.....	F
F	118	32	McMaster, John.....	3	N half 10.....	F
F	119	321	McMaster, Angus.....	3	N half 11.....	F
F	120	386	McMurphy, John.....	4	Centre part 12.....	F
F	121	183	McNab, Donald.....	1	N half 8.....	F
F	122	209	McNaughton, Forbes.....	1	C 6, 7 and 8 part N half 12.	T
F	123	172	McNulty, Patrick.....	1	C 9 & 10, p n 1/2 12 & 2c, w p s 1/2 11	F
F	124	174	McNulty, Michael.....	1	S half 3.....	F
F	125	279	McRae, Duncan A.....	1	S half 4.....	T
F	126	235	McRoberts, John.....	2	C 1, 2, 11 & 12 part N half 12	F
F	127	206	McRoberts, Chambers.....	1	S E corner S half 13.....	F
F	128	175	McTaggart, George.....	1	Part N half 12.....	T
F	129	368	Nicholis, Robert.....	4	S half 5.....	T
					E half of S half 5.....	F

List of Voters for the Township of Ekfrid, Division No. 4.

Consecutive.	No. on Assessment Roll.	NAME.	Concession.	No of Lot or Part Lot.	Other Description.
130	367	Nicholls, William.....	4	W half of S half 5.....	F
131	380	Pace, George.....	4	E half of N half 11.....	F
132	188	Patterson, Archibald.....	1	N half 10.....	F
133	187	Patterson, Malcolm.....	1	S half 10.....	F
134	189	Patterson, Alexander.....	1	S half 11.....	F
135	419	Patterson, Thomas.....	5	E part S part 1.....	F
136	312	Perry, Thomas.....	3	E half of N half 5.....	F
137	369	Perry, C. W.....	4	W half of S half 6.....	T
138	317	Prosser, M. W.....	3	N half 9.....	F
139	375	Prosser, Benjamin.....	4	S half 9.....	F
140	269	Prudham, Thomas.....	2	S half 12.....	F
141	182	Ramsey, Hamilton.....	1	N half 8.....	T
142	250	Ramey, Nathaniel.....	2	S half 1.....	F
143	301	Ramey, William.....	3	S half and E half of N half 1	T
144	302	Ramey, James.....	3	S half and E half of N half 1	F
145	363	Ramey, David.....	4	E half of N half 4.....	F
146	422	Ramey, John.....	5	S half 2.....	T
147	213	Rankin, Alexander.....	1	Part N half 13.....	T
148	214	Rankin, Hugh.....	1	Part N half 13.....	F
149	262	Richards, John.....	2	N half 5.....	F
150	307	Rimele, Henry.....	3	W half of N half 4.....	F
151	265	Ross, Peter.....	2	S half 9.....	T
152	425	Robin, Thomas.....	5	S half 3.....	T
153	429	Scott, T. B.....	5	S half 5.....	F
154	308	Simmons, Aaron.....	3	E half of N half 4.....	T
155	440	String, Nelson.....	5	N half of S half 10.....	F
156	179	Strachan, Charles.....	1	N half 7.....	F
157	151	Strachan, Thomas.....	2	S half 8.....	F
158	444	Stringer, William H.....	5	S half of S half 12.....	F
159	418	Sutton, John.....	5	N part 1.....	T
160	314	Tanner, George.....	3	N half 6.....	F
161	376	Thompson, George.....	4	N half 10.....	F
162	263	Towe, Joseph.....	2	N half 8.....	F
163	439	Towers, Charles.....	5	N halves 9 and 10.....	F
164	257	Warren, Henry.....	2	S half 2.....	T
165	226	Wheatley, Solomon.....	1	W half of N half 15.....	F
166	225	Webster, Robert.....	1	S half 15.....	F
167	420	Weber, John.....	5	W part of S part 1.....	F
168	359	Weston, John.....	4	N E part 2.....	F
169	361	Weston, Wilkinson.....	4	N W part 2.....	F
170	441	Weller, Moses.....	5	S half of S half 10.....	T
171	426	Woolcock, Thomas.....	5	W part N half 4.....	F

I, Donald McFarlane, Clerk of the Municipality of the Township of Ekfrid in the County of Middlesex, and Province of Ontario, make oath and say, that according to the best of my information, knowledge and belief, the foregoing is a correct list of all the assessed qualified electors in the Fourth Electoral Division of the Township of Ekfrid, entitled to vote at the Election of Members to serve in the Legislative Assembly of the Province of Ontario, taken from the revised Assessment Roll of the said Township of

Ekfrid of the year 1876, according to the Acts of Parliament in that behalf.

DONALD McFARLANE,

Clerk, Township of Ekfrid.

Sworn before me this 19th day of June, A. D. 1876.

L. CLEVERDON, J. P.

I hereby certify that a copy of the foregoing list was first posted up in my Office on Monday, the 3rd day of July, A. D. 1876, and all electors are hereby requested to examine said list, and if any omissions or errors are perceived therein, to take immediate proceedings to have the said omissions or errors corrected according to law.

DONALD McFARLANE,

Clerk, Township of Ekfrid.

FIFTH ELECTORAL DIVISION.

Consecutive.	No. on Assessment Roll.	NAME.	Concession.	No. of Lot or Part Lot.	Other Description.
1	351	Banks, Peter	3	N half 23	T
2	410	Beaton, Archibald	4	N part W half 21	F
3	292	Campbell, Colin	2	N $\frac{1}{2}$ of W $\frac{1}{2}$ of S $\frac{1}{2}$ 23	T
4	293	Campbell, John W	2	N $\frac{1}{2}$ of W $\frac{1}{2}$ of S $\frac{1}{2}$ 23	F
5	453	Campbell, John	5	N half 16	F
6	460	Campbell, Duncan	5	N half 19	F
7	462	Campbell, Charles	5	E half of N half 20	F
8	331	Caulfield, John	3	S half 16	T
9	454	Carruthers, Christopher	5	S half 16	F
10	332	Chisholm, Angus	3	S half 16	F
11	283	Coulthard, William S	2	S half 19	T
12	78	Coulthard, Andrew	2	S half 19	F
13	247	Currie Nathaniel	1	E part N half 23	F
14	290	Currie, James	2	N half 22	F
15	342	Currie, Robert	3	W half of N half 20	F
16	249	Dean, Michael	1	E half of S half 24	F
17	333	Devlin, William J	3	N half 16	T
18	334	Devlin, William	3	N half 16	F
19	336	Devlin, Lewis	3	S half of S half 17	F
20	338	Devlin, John	3	N half 17	F
21	414	Down, John	4	S half 23	T
22	281	Eddie, James	2	S half 18 and N half 19	F
23	390	Eddie, William	3	19 and S half 18	F
24	404	Eddie, Solomon	4	S half 20	T
25	405	Eddie, Alexander	4	S half 20	F
26	229	Egleson, Thomas	1	N half 16	F
27	458	Gew, William	5	18	F
28	294	Graham, Duncan	2	W $\frac{1}{2}$ of E $\frac{1}{2}$ of N $\frac{1}{2}$ 23	F
29	295	Graham, Angus	2	E $\frac{1}{2}$ of W $\frac{1}{2}$ of N $\frac{1}{2}$ 23	T
30	300	Graham, Archibald	2	E $\frac{1}{2}$ of W $\frac{1}{2}$ of N $\frac{1}{2}$ 23	F
31	343	Graham, John C	4	N half 24	F
32	340	Graham, John C	4	S halves 22 and 23	F
33	340	Graham, John C	4	S halves 22 and 23	F
32	340	Hamilton, Duncan	3	E half of N half 20	F

Consecutive.	No. on Assessment Roll.	NAME.	Concession	No. of Lot or Part Lot	Other Description.
33	289	Hardley, Joseph	2	N half 22	T
34	339	Harris, Thomas	3	W half of S half 20	F
3	395	Hicks, Green	4	E half 16	F
36	343	Hughes, George	3	E half of S half 20	F
37	456	Hull, John E.	5	S half 17	F
38	457	Hull, David H.	5	S half 17	F
39	350	Lamson, George	3	E half of S half 23	F
40	277	Leitch, Lachlan	2	N half 16	F
41	402	Leitch, Archibald M.	4	S half 19	F
42	463	Leitch, William	5	S half 21	F
43	464	Leitch, Malcolm	5	N half 21	F
44	466	Leitch, Hugh	5	N half 22	F
45	406	Littlejohn, Philip	4	N half 20	F
46	400	Mawhiney, John	4	S half 18	F
47	246	Middleniss, Ralph	1	Part N half 23	F
48	399	Munson, K. S.	4	N half 17	F
49	453	Munroe, Peter	5	N half 17	F
50	241	McAlpine, Malcolm J.	1	S half 21	F
51	353	McAlpine, Donald	3	S half 24	F
52	469	McAlpine, Alexander	5	E half of N half 23	F
53	228	McArthur, Duncan	1	S half 16	F
54	230	McArthur, Duncan	1	S half 17	T
55	231	McArthur, Alexander	1	S half 17	T
56	232	McArthur, Peter	1	S half 17	F
57	348	McCallum, John	3	N half 22	F
58	354	McCallum, John	3	N half 24	F
59	461	McCallum, Zachariah	5	S half 20	F
60	297	McCracken, John	2	N half of S half 24	F
61	248	McElderry, Edward	1	E half of S half 24	T
62	394	McEachern, John	4	W half 16	F
63	396	McFarlane, John	4	S half 17	F
64	401	McFarlane, Hector	4	N half 18	F
65	403	McFarlane, John	4	N half 19	T
66	284	McGougan, Malcolm	2	S half 20	F
67	415	McGregor, Donald	4	E half of N half 23	F
68	470	McGregor, Duncan	5	24	F
69	413	McIntyre, James	4	W half of N half 23	F
70	416	McIntyre, Malcolm C.	4	S half 24	F
71	287	McKay, Robert	2	S $\frac{1}{2}$ 22 and 1 con. N $\frac{1}{2}$ 22	T
72	288	McKay, William	2	S $\frac{1}{2}$ 22 & 1 con N $\frac{1}{2}$ 22	F
73	346	McKay, John	3	N half 21	F
74	352	McLachlan, John	3	N half 23	F
75	411	McLachlan, Hugh	4	N half 22	F
76	467	McLachlan, Alexander	5	W half of N half 23	F
77	286	McLean, Allan	2	S half 21	F
78	238	McMillan, Malcolm	1	S half of S half 20	T
79	240	McRae, Philip	1	N half 20	F
80	242	McRae, Donald	1	N half 21	T
81	243	McRae, John	1	N half 21	T
82	244	McRae, James	1	N half 21	F
83	246	McRae, Donald	1	S half 23	F
84	255	McRae, John J.	2	N half 20	F

List of Voters for the Township of Ekfrid, Division No. 5.

Consequent v.e.	No. on Assessment Roll.	NAME.	Concession.	No of Lot or Part Lot.	Other Description.
85	412	McVicar, Neil.....	4	Part of N half 22.....	T
86	465	McVicar, David.....	5	S half 22.....	F
87	468	McVicar, Donald.....	5	S half 23.....	F
88	276	McKinnon, Alexander.....	2	S half 16.....	F
89	279	McRae, Duncan A.....	2	S half 17.....	F
90	280	McTaggart, Peter.....	2	N half 17.....	F
91	282	McTaggart, Hugh.....	2	N half 18.....	F
92	234	Pole, Francis.....	1	E half of N half 17.....	F
93	235	Pole, James.....	1	N half 18.....	F
94	237	Quick, James.....	1	N part 19.....	F
95	245	Riddle, James.....	1	S half 22.....	F
96	236	Sutherland, William.....	1	S halves 18 and 19.....	F
97	459	Sutherland, Donald.....	5	S half 19.....	F
98	291	Stephens, Wellington C.....	2	N $\frac{1}{2}$ of E $\frac{1}{2}$ of S $\frac{1}{2}$ 23.....	F
99	345	Stout, Donald.....	3	E $\frac{1}{2}$ of E $\frac{1}{2}$ of N $\frac{1}{2}$ 23.....	F
100	344	Whitteker, Richard..	3	N half 21.....	T
				S half 21.....	F

I, Donald McFarlane, Clerk of the Municipality of the Township of Ekfrid in the County of Middlesex, and Province of Ontario, make oath and say, that according to the best of my information, knowledge and belief, the foregoing is a correct list of all the assessed and qualified electors in the Fifth Electoral Division of the Township of Ekfrid, entitled to vote at the election of Members to serve in the Legislative Assembly of the Province of Ontario, taken from the revised Assessment Roll of the said Township of Ekfrid of the year 1876, according to the Acts of Parliament in that behalf.

DONALD McFARLANE,

Clerk, Township of Ekfrid.

Sworn before me this 19th day of June, A. D. 1876.

L. CLEVERDON, J. P.

I hereby certify that a copy of the foregoing list was first posted up in my Office on Monday, the 3rd day of July, A. D. 1876, and all electors are hereby requested to examine the said list, and if any omissions or errors are perceived therein, to take immediate proceedings to have the said omissions or errors corrected according to law.

DONALD McFARLANE,

Clerk, Township of Ekfrid.

