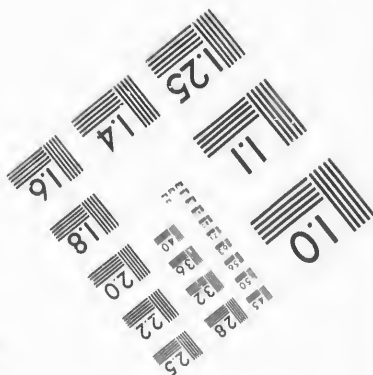
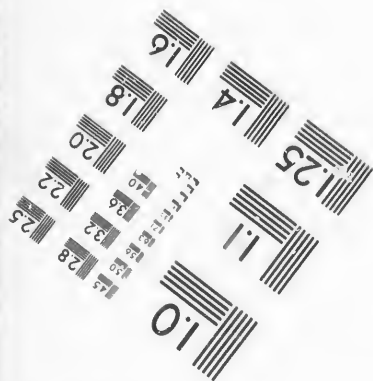
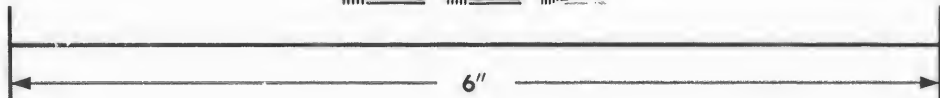
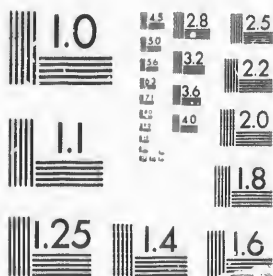


**IMAGE EVALUATION
TEST TARGET (MT-3)**



**Photographic
Sciences
Corporation**

23 WEST MAIN STREET
WEBSTER, N.Y. 14580
(716) 872-4503

Can

14 28 25
32 22
20
3

**CIHM/ICMH
Microfiche
Series.**

**CIHM/ICMH
Collection de
microfiches.**



Canadian Institute for Historical Microreproductions / Institut canadien de microreproductions historiques

10

© 1987

Technical and Bibliographic Notes/Notes techniques et bibliographiques

The Institute has attempted to obtain the best original copy available for filming. Features of this copy which may be bibliographically unique, which may alter any of the images in the reproduction, or which may significantly change the usual method of filming, are checked below.

L'Institut a microfilmé le meilleur exemplaire qu'il lui a été possible de se procurer. Les détails de cet exemplaire qui sont peut-être uniques du point de vue bibliographique, qui peuvent modifier une image reproduite ou qui peuvent exiger une modification dans la méthode normale de filmage sont indiqués ci-dessous.

- Coloured covers/
Couverture de couleur
- Covers damaged/
Couverture endommagée
- Covers restored and/or laminated/
Couverture restaurée et/ou pelliculée
- Cover title missing/
Le titre de couverture manque
- Coloured maps/
Cartes géographiques en couleur
- Coloured ink (i.e. other than blue or black)/
Encre de couleur (i.e. autre que bleue ou noire)
- Coloured plates and/or illustrations/
Planches et/ou illustrations en couleur
- Bound with other material/
Relié avec d'autres documents
- Tight binding may cause shadows or distortion along interior margin/
La reliure serrée peut causer de l'ombre ou de la distorsion le long de la marge intérieure
- Blank leaves added during restoration may appear within the text. Whenever possible, these have been omitted from filming/
Il se peut que certaines pages blanches ajoutées lors d'une restauration apparaissent dans le texte, mais, lorsque cela était possible, ces pages n'ont pas été filmées.
- Additional comments: [Printed ephemera] 1 sheet (verso blank)
Commentaires supplémentaires:

- Coloured pages/
Pages de couleur
- Pages damaged/
Pages endommagées
- Pages restored and/or laminated/
Pages restaurées et/ou pelliculées
- Pages discoloured, stained or foxed/
Pages décolorées, tachetées ou piquées
- Pages detached/
Pages détachées
- Showthrough/
Transparence
- Quality of print varies/
Qualité inégale de l'impression
- Includes supplementary material/
Comprend du matériel supplémentaire
- Only edition available/
Seule édition disponible
- Pages wholly or partially obscured by errata slips, tissues, etc., have been refilmed to ensure the best possible image/
Les pages totalement ou partiellement obscurcies par un feuillet d'errata, une pelure, etc., ont été filmées à nouveau de façon à obtenir la meilleure image possible.

This item is filmed at the reduction ratio checked below/
Ce document est filmé au taux de réduction indiqué ci-dessous.

10X	12X	14X	16X	18X	20X	22X	24X	26X	28X	30X	32X
								/			

The copy filmed here has been reproduced thanks to the generosity of:

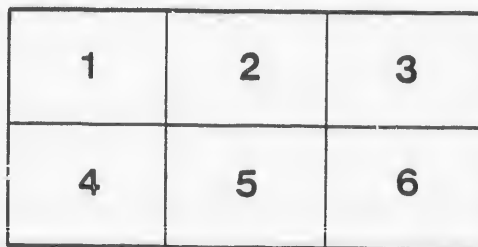
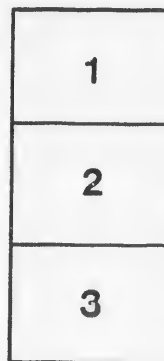
D. B. Weldon Library
University of Western Ontario
(Regional History Room)

The images appearing here are the best quality possible considering the condition and legibility of the original copy and in keeping with the filming contract specifications.

Original copies in printed paper covers are filmed beginning with the front cover and ending on the last page with a printed or illustrated impression, or the back cover when appropriate. All other original copies are filmed beginning on the first page with a printed or illustrated impression, and ending on the last page with a printed or illustrated impression.

The last recorded frame on each microfiche shall contain the symbol \rightarrow (meaning "CONTINUED"), or the symbol ∇ (meaning "END"), whichever applies.

Maps, plates, charts, etc., may be filmed at different reduction ratios. Those too large to be entirely included in one exposure are filmed beginning in the upper left hand corner, left to right and top to bottom, as many frames as required. The following diagrams illustrate the method:



L'exemplaire filmé fut reproduit grâce à la générosité de:

D. B. Weldon Library
University of Western Ontario
(Regional History Room)

Les images suivantes ont été reproduites avec le plus grand soin, compte tenu de la condition et de la netteté de l'exemplaire filmé, et en conformité avec les conditions du contrat de filmage.

Les exemplaires originaux dont la couverture en papier est imprimée sont filmés en commençant par le premier plat et en terminant soit par la dernière page qui comporte une empreinte d'impression ou d'illustration, soit par le second plat, selon le cas. Tous les autres exemplaires originaux sont filmés en commençant par la première page qui comporte une empreinte d'impression ou d'illustration et en terminant par la dernière page qui comporte une telle empreinte.

Un des symboles suivants apparaîtra sur la dernière image de chaque microfiche, selon le cas: le symbole \rightarrow signifie "A SUIVRE", le symbole ∇ signifie "FIN".

Les cartes, planches, tableaux, etc., peuvent être filmés à des taux de réduction différents. Lorsque le document est trop grand pour être reproduit en un seul cliché, il est filmé à partir de l'angle supérieur gauche, de gauche à droite, et de haut en bas, en prenant le nombre d'images nécessaire. Les diagrammes suivants illustrent la méthode.

PROCLAMATION

V.



SOUTH RIDING



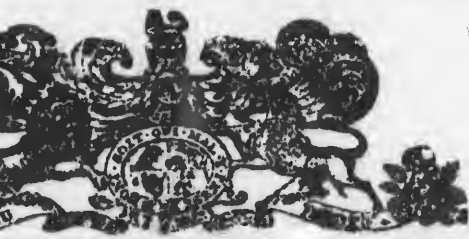
Public Notice is hereby given to the Electors of
obedience to Her Majesty's Writ to me directed
day of January, 1875, I require the presence of

VILLAGE OF

in the Township of Stanley,

BY APPOINTMENT
WITNESSED AT
BY ME
THE

AMMATION!



R.

ING OF HURON,

WXXE:

Electors of the Electoral District aforesaid, that in
me directed, and bearing date the Twenty-eighth
uire the presence of the said Electors at the

OF VARNNA,

of Stanley, in the said Riding on the

THY MONY ON DUNDY

THE VARNNA

VILLAGE OF

in the Township of Stanley, in

ELEVENTH DAY OF THE

From noon until two of the clock in the afternoon, for the purpose of nominating a person
case a Poll be demanded and allowed in the manner by law

18TH DAY OF FEBRU

from the hour of nine in the morning till five of the clock in the afternoon

- For Polling Subdivision No. 1, in the Township of Goderich, at Murdo Gordon's House, Lot 16, Concession 3.
- For Polling Subdivision No. 2 in said Township, at a house on Lot 9, Maitland Concession (Duggan's Corners).
- For Polling Subdivision No. 3 in said Township, at the School House, School Section No. 8.
- For Polling Subdivision No. 4, in said Township, at W. Wise's House, Lot 41, Concession 11.
- For Polling Subdivision No. 5, in said Township, at Edward Kelly's House, in the Village of Holmesville.
- For Polling Subdivision No. 1, in the Township of Stanley, at the School House, School Section No. 10.
- For Polling Subdivision No. 2, in said Township, at the Temperance Hall, in the Village of Varna.
- For Polling Subdivision No. 3, in said Township, at School House, School Section No. 3.

- For Polling Subdivision No. 4, in said Township, at tion No. 8.
- For Polling Subdivision No. 1, in the Township School Section No. 10.
- For Polling Subdivision No. 2, in said Township, at Village of Zurich.
- For Polling Subdivision No. 3, in said Township, at tion No. 12.
- For Polling Subdivision No. 4, in said Township, Green P. C.
- For Polling Subdivision No. 1, in the Township School Section No. 1.
- For Polling Subdivision No. 2, in said Township, at Village of Crediton.
- For Polling Subdivision No. 3, in said Township, at tion No. 6.

AND FURTHER

On the 24th day of Febru

At the Court House in T

I shall open the ballot boxes, sum up the votes given for the several candidates, and ret
are hereby required to take notice and to govern themselves accordingly.

Given under my hand at Goderich this 30th day of January, in the year 1875.

R

Printed at the Signal Office, Goderich.

OF VARNIA,

Stanley, in the said Riding on the

THE MONTH OF FEBRUARY,

nominating a person to represent them in the House of Commons of Canada, and that in the manner by law prescribed such Poll will be opened on the

FEBRUARY, A. D. 1875,

the clock in the afternoon in each of the Polling Districts that is to say

on No. 4, in said Township, at School House School Section No. 1, in the Township of Hay, at School House No. 10.
on No. 2, in said Township, at the Township Hall, in the
on No. 3, in said Township, at School House School Section No. 4, in said Township, at the Union Hall, at Hills
on No. 1, in the Township of Stephen, at School House No. 1.
on No. 2, in said Township, at the Township Hall, in the
on No. 3, in said Township, at School House School Section

For Polling Subdivision No. 4, in said Township, at School House School Section No. 10.
For Polling Subdivision No. 1, in the Township of Osborne, at School House School Section No. 5.
For Polling Subdivision No. 2, in said Township, at the Township Hall, in the Village of Elmville.
For Polling Subdivision No. 3, in said Township, at School House School Section No. 3.
For Polling Subdivision No. 4, in said Township, at School House School Section No. 10.
For Polling Subdivision No. 1, in the Town of Clinton, at the Town Hall.
For Polling Subdivision No. 2, in said Town, at a building on Isaac Street next door to the Printing office.
For Polling Subdivision No. 3, in said Town, at Cantelon & Brother's Waggon Shop.
For Polling Subdivision No. 1, in the Village of Exeter, at Bawden's Marble Shop.

FURTHER THAT

^{AD 1875}
February, at 10 o'clock A.M.

House in Town of Goderich,

candidates, and return as elected the one having the majority of votes, of which all persons singly.
in the year 1875.

ROBERT GIBBONS,

Returning Officer.

ch.

